

## MS-300 Dumps

### Deploying Microsoft 365 Teamwork

<https://www.certleader.com/MS-300-dumps.html>



### NEW QUESTION 1

- (Exam Topic 1)

Your company uses Microsoft SharePoint Online and Microsoft OneDrive for Business to store documents. You need to prevent users from prevent users form downloading the SharePoint and OneDrive documents from unmanaged devices. The users must be able to edit the documents from a web browser on the unmanaged devices. Which three actions should you perform? Each answer presents part of the solution. NOTE: Each correct selection is worth one point.

- A. Set Allow limited access to Allow downloading.
- B. Create a conditional access policy that allows access from managed devices.
- C. Create a conditional access policy to block access from unmanaged mobile and desktop clients.
- D. Set Allow limited access to Block downloading.
- E. Create a conditional access policy for web browsers that has app-enforced restrictions.

**Answer:** BDE

#### Explanation:

References:

<https://docs.microsoft.com/en-us/microsoft-365/enterprise/sharepoint-file-access-policies#use-app-enforced-rest>

### NEW QUESTION 2

- (Exam Topic 1)

You need to recommend a solution to ensure that SharePoint Online site collections are available as links on the SharePoint home page and personal sites. What should you include in the recommendation?

- A. Promoted Sites
- B. Organization Policies
- C. Publish Links to Office Client Applications
- D. Trusted Host Locations

**Answer:** A

### NEW QUESTION 3

- (Exam Topic 1)

You have a Microsoft SharePoint Online site collection named Sales. You have an external user named GuestUser1 who has guest access to the Sales site collection.

You need to ensure that GuestUser1 can create additional subsites. The solution must use the principle of least privilege.

What is the best way to achieve the goal? More than one answer choice may achieve the goal. Select the BEST answer.

- A. Add GuestUser1 to the Members group of the Sales site collection
- B. Assign a SharePoint Online Plan1 license to GuestUser1
- C. Assign GuestUser1 the SharePoint administrator role
- D. Add GuestUser1 to the Owners group of the Sales site collection

**Answer:** D

### NEW QUESTION 4

- (Exam Topic 1)

You have a Microsoft 365 subscription.

You need to ensure that users accessing files in Microsoft SharePoint Online from an unmanaged device can only view the files in a browser.

How should you complete the command? To answer, select the appropriate options in the answer area. NOTE: Each correct selection is worth one point.

<div>Set-SPOSite</div> <div>Set-SPOTenant</div> <div>Set-SPOTenantCdnPolicy</div>	<div>-ConditionalAccessPolicy</div> <div>-PermissiveBrowserFileHandlingOverride</div> <div>-SharingDomainRestrictionMode</div>	<div>AllowFullAccess</div> <div>AllowLimitedAccess</div> <div>BlockAccess</div>
---	--	---

- A. Mastered
- B. Not Mastered

**Answer:** A

#### Explanation:

References:

<https://docs.microsoft.com/en-us/sharepoint/control-access-from-unmanaged-devices#limit-access-using-powers>

### NEW QUESTION 5

- (Exam Topic 1)

You have a Microsoft 365 subscription.

You need to control which third-party apps are available in Microsoft Teams.

Which three actions should you perform from the Microsoft Teams settings? Each correct answer presents part of the solution.

NOTE: Each correct selection is worth one point.

- A. Disable the default apps
- B. Turn on Allow external apps in Microsoft Teams
- C. Turn off Allow external apps in Microsoft Teams

- D. Turn off Enable new external apps by default
- E. Turn off Allow sideloading of external apps

**Answer:** BDE

**Explanation:**

References:  
<https://docs.microsoft.com/en-us/microsoftteams/enable-features-office-365#external-apps>

**NEW QUESTION 6**

- (Exam Topic 1)

Note: This question is part of a series of questions that present the same scenario. Each Question In the series central is a unique solution that might meet the stated goals. Some question sets might have more than one correct solution, while others might not have a correct solution.

After you answer a Question in there section, you will NOT be able to return to it- As a result, these Questions will not appear m the review screen.

You have a Microsoft 365 subscription. You have a distribution list named Finance.

You need to ensure that you can use finance to create a team in Microsoft Teams. Solution: From the Exchange admin center, you create a new migration batch. Does this meet the goal?

- A. Yes
- B. No

**Answer:** B

**NEW QUESTION 7**

- (Exam Topic 1)

You work for a Canadian company named Contoso.Ltd. Contoso has a Microsoft 36S subscription.

Contoso discovers that some users share Canadian Personally Identifiable Information (PII) data with external users.

You need to notify users and administrators when sensitive information is shared with internal or external users.

What should you create?

- A. a Microsoft Azure Information Protection policy
- B. a data loss prevention (DLP) policy
- C. a data governance policy
- D. a sensitivity label policy

**Answer:** B

**NEW QUESTION 8**

- (Exam Topic 1)

You are the environment administrator for Microsoft Flow.

You need to ensure that users can only snare data between Microsoft SharePoint and Microsoft Dynamics 365. Winch two actions should you perform? Each correct answer presents part of the solution.

NOTE: Each correct selection is worth one point.

- A. Create a data governance label.
- B. Create an Information Rights Management (IRM) policy.
- C. Create a data loss prevention (DIP) policy.
- D. Create a Data Subject Rights (DSR) case.
- E. Add connectors to a data group

**Answer:** CE

**Explanation:**

References:  
<https://docs.microsoft.com/en-us/flow/introduction-to-data-groups>

**NEW QUESTION 9**

- (Exam Topic 1)

Note: This question is a part of a series of questions that presents the same scenario. Each question in the series contains a unique solution that might meet the stated goals. Some question sets might have more than one correct solution, while others might not have a correct solution.

After you answer a question in this section, you will NOT be able to return to it. As a result, these questions will not appear in the review screen.

Your company has a Microsoft SharePoint Online subscription. The company purchases a new add-in for Microsoft Excel.

You need to deploy the add-in to all users.

Solution: From the App Catalog, you upload the add-in to the Microsoft Office Add-ins. Does this meet the goal?

- A. Yes
- B. NO

**Answer:** B

**NEW QUESTION 10**

- (Exam Topic 1)

You have a Microsoft 365 subscription.

You need to prevent unmanaged devices from accessing Microsoft OneDrive for Business. Which admin center should you use?

- A. Teams & Skype
- B. Azure Active Directory
- C. SharePoint

D. Cloud App Security

**Answer:** B

#### NEW QUESTION 10

- (Exam Topic 1)

Your company has a Microsoft 365 subscription.

The company's new security policy states that when a user account is deleted, the Microsoft OneDrive data of the user must be retained for 180days, and then deleted.

You need to implement the security policy. What should you do?

- A. From the OneDrive admin center, configure the Compliance settings.
- B. From the Security & Compliance admin center, create a retention policy
- C. From the Security & Compliance admin center, create a data loss prevention (DLP) policy.
- D. From the OneDrive admin center, configure the Storage settings.

**Answer:** D

#### NEW QUESTION 14

- (Exam Topic 1)

Your company is moving an on premises Microsoft SharePoint deployment to SharePoint Online.

The on-premises SharePoint deployment uses structural navigation with security trimming. After testing the same navigation approach in SharePoint Online, the company identifies the following requirements for the SharePoint Online deployment:

- Display an access denied page when users lack permissions to see a given page.
- Populate the navigation links based on a predefined company taxonomy.
- Display the same set of links to all users.

Which navigation approach should you recommend?

- A. search-driven navigation with security trimming.
- B. structural navigation without security trimming.
- C. a Custom navigation provider with security trimming.
- D. managed navigation without security trimming.

**Answer:** D

#### NEW QUESTION 19

- (Exam Topic 1)

You have a Microsoft 365 subscription.

You need to prevent users from using third-party cloud storage in Microsoft Teams.

Which settings should you configure from the Microsoft Teams & Skype for Business Admin Center?

- A. Teams settings
- B. Messaging policies
- C. Meeting policies
- D. Services & add-ins
- E. Manage teams

**Answer:** A

#### NEW QUESTION 21

- (Exam Topic 1)

You have a Microsoft 365 subscription.

You create a security group named ITTeam. You need to ensure that only the members of ITTeam can create new teams and Office 365 groups.

You start PowerShell and connect to Microsoft Azure Active Directory (Azure AD).

How should you complete the PowerShell script? To answer, select the appropriate options in the answer area.

NOTE: Each correct selection is worth one point.

```
$ITTeamObjectID = $ITTeam.ObjectId.ToString()
$Template = Get-MsolAllSettingTemplate | where-object {$_.DisplayName -eq "Group.Unified"}
$Setting = $Template.CreateSettingsObject()
$Setting["AllowGuestsToAccessGroups"] = $False
$Setting["AllowToAddGuests"]
$Setting["EnableGroupCreation"]

$Setting["CreateSettingsObject"] = $ITTeamObjectID
$Setting["GroupCreationAllowedGroupId"]
$Setting["UsageGuidelinesUrl"]

Get-MsolSettings -SettingsObject $Setting
New-MsolSettings
Set-MsolSettings
```

- A. Mastered
- B. Not Mastered

**Answer:** A

**Explanation:**

```
$ITTeamObjectID = $ITTeam.ObjectId.ToString()
$Stemplate = Get-MsolAllsettingTemplate | where-object {$_.DisplayName -eq "Group.Unified"}
$Setting = $Stemplate.CreateSettingsObject()
$Setting["AllowGuestsToAccessGroups"] = $False
$Setting["CreateSettingsObject"] = $ITTeamObjectID
$Setting["GroupCreationAllowedGroupId"]
$Setting["UsageGuidelinesUrl"]

Get-MsolSettings -SettingsObject $Setting
New-MsolSettings
Set-MsolSettings
```

**NEW QUESTION 22**

- (Exam Topic 1)

Your company plans to deploy Microsoft SnarePoint Online.  
You create 15 modern team sites based on the organizational structure of the company. You need to ensure that the site collections share common navigation and branding. Which PowerShell cmdlet should you run?

- A. Set-SPOHubSite
- B. Upgrade-SPOSite
- C. Set-SPOSiteGroup
- D. Register-SPOHubSite

Answer: D

**NEW QUESTION 26**

- (Exam Topic 1)

Note: This question is part of a series of questions that present the same scenario. Each Question In the series central is a unique solution that might meet the stated goals. Some question sets might have more than one correct solution, while others might not have a correct solution.  
After you answer a Question in there section, you will NOT be able to return to it- As a result, these Questions will not appear m the review screen.  
Your company has a Microsoft SharePoint Online subscription. The company purchases a new add-in for Microsoft Excel.  
You need to deploy the add-in to all users.  
Solution: From the Microsoft 365 admin center, you deploy the add-in. Does this meet the goal?

- A. Yes
- B. No

Answer: A

**NEW QUESTION 29**

- (Exam Topic 1)

You have a Microsoft 365 subscription.  
You configure an App Catalog. You add several apps to the App Catalog.  
Users report that when they attempt to add apps to sites, the new apps fail to appear. You need to ensure that the users can add the apps to the sites.  
Which three actions should you perform in sequence? To answer, move the appropriate actions from the list of actions to the answer area and arrange them in the correct order.

Actions

Run the New-Filecatalog cmdlet.

Select the app.and then select **Open**.

Select the **Featured** check box in the App settings.

Open the App catalog site, select the **Apps for SharePoint** list, and then select **new item**.

Run the Install-SPApp cmdlet.

Select the **Enabled** check box in the app settings.

Answer Area

- A. Mastered
- B. Not Mastered

Answer: A

Explanation:



Actions	Answer Area
Run the New-Filecatalog cmdlet.	Open the App catalog site, select the <b>Apps for SharePoint</b> list, and then select <b>new item</b> .
Select the app and then select <b>Open</b> .	
Select the <b>Featured</b> check box in the App settings.	Select the app and then select <b>Open</b> .
Open the App catalog site, select the <b>Apps for SharePoint</b> list, and then select <b>new item</b> .	Select the <b>Enabled</b> check box in the app settings.
Run the Install-SPApp cmdlet.	
Select the <b>Enabled</b> check box in the app settings.	

#### NEW QUESTION 30

- (Exam Topic 1)

You have a Microsoft 365 subscription that uses Microsoft Teams. You purchase an app named App1 from the Teams store. You need to add App1 to the Teams client for several users.

Which two actions should you perform in the Microsoft Teams admin center? Each correct answer presents part of the solution.

NOTE: Each correct selection is worth one point.

- A. From App Setup policies, create a new app setup policy
- B. From Org-wide settings, modify the Devices settings
- C. From App Setup policies, modify the global app setup policy
- D. From the properties of the users, edit the assigned policies
- E. From Meetings, modify the Network settings

**Answer:** AD

#### Explanation:

References:

<https://docs.microsoft.com/en-us/microsoftteams/teams-app-setup-policies>

#### NEW QUESTION 35

- (Exam Topic 1)

You have a Microsoft 365 subscription.

You need to add a user named Admin1 as an administrator of the Microsoft One Drive for Business site of a user named User1.

What should you do?

- A. From the SharePoint admin center, select user profiles, and then select Manage User Profile
- B. Select User1, and then select Manage site collection owners.
- C. From the SharePoint admin center, select user profiles, and then select Mange User Properties.
- D. From the SharePoint admin center, select user profiles, and then select Mange User Permissions.
- E. From Setup My Sites, add a secondary administrator.

**Answer:** A

#### NEW QUESTION 40

- (Exam Topic 1)

Your company has a Microsoft 365 subscription.

The company uses Microsoft Yammer and plans to integrated Yammer content and Teams. You need to integrate Yammer notifications into a Teams channel.

What should you do?

- A. From Yammer, configure the Feed Events settings.
- B. From Yammer, configure the Notifications settings.
- C. From Teams, add a connector.
- D. From Teams, add an RSS feed.
- E. From Teams, add an app.

**Answer:** C

#### Explanation:

References:

<https://blogs.technet.microsoft.com/skypehybridguy/2017/08/22/connectintegrate-yammer-to-microsoft-teams-h>

#### NEW QUESTION 44

- (Exam Topic 1)

You are a Microsoft Teams administrator for your company

The company create a new Teams app named App 1, A developer packages App 1 as a ZIP file. You need 10 ensure that App1can be uploaded as a ZIP package to Teams.

Which Apps setting should you turn on?

- A. Enable new external apps by default
- B. Allow external apps in Microsoft Teams
- C. Enable default apps

D. Allow side loading of external apps

**Answer:** D

**Explanation:**

References:

<https://docs.microsoft.com/en-us/microsoftteams/admin-settings>

#### NEW QUESTION 47

- (Exam Topic 1)

You have a Microsoft SharePoint Online subscription. You need to ensure that Microsoft PowerPoint files appear at the top of search results.

Which two actions should you perform? Each correct answer presents part of the solution.

NOTE: Each correct selection is worth one point.

- A. Set a query transform of {SearchBoxQuery}Filetype=pptx contentclass:STS\_Web
- B. Set a query transform of {SearchTerms}Filetype=pptx
- C. Create a new result source
- D. Create a new query rule
- E. Create a new Search dictionary

**Answer:** BD

#### NEW QUESTION 51

- (Exam Topic 1)

You have a Microsoft 365 subscription.

You need to prevent only users in the research department from deleting chat messages. What should you do first from the Microsoft Teams & Skype for Business Admin Center?

- A. Create a new messaging policy
- B. Modify the Global messaging policy.
- C. Configure the Meetings settings.
- D. Create a new meeting policy.

**Answer:** A

#### NEW QUESTION 53

- (Exam Topic 1)

You have a Microsoft 365 subscription.

All users have computers that run Windows 10 and have Microsoft Teams installed. A user reports the following issues:

- The user selection process takes too long to complete.
- The Teams client crashes and restarts automatically.
- Users lose connections during screen sharing.

You need to view the Teams debug logs to troubleshoot the issues. What should you do?

- A. Right-click the Microsoft Teams icon in the application tray, and then select Get log
- B. Open Logs.txt in the %Appdata%\Microsoft\Teams\folder.
- C. From the Teams client, select Ctrl + Alt + Shift + 1. Open the ETL files in the %Appdata%\Microsoft\Teams\folder.
- D. Right-click the Teams icon in the application tray, and then select Get log
- E. Open the log files in the % Userprofile%\Downloads\folder.
- F. From Event Viewer, open the System log and filter the log for a keyword of MSTeams.

**Answer:** B

**Explanation:**

References:

<https://docs.microsoft.com/en-us/microsoftteams/log-files>

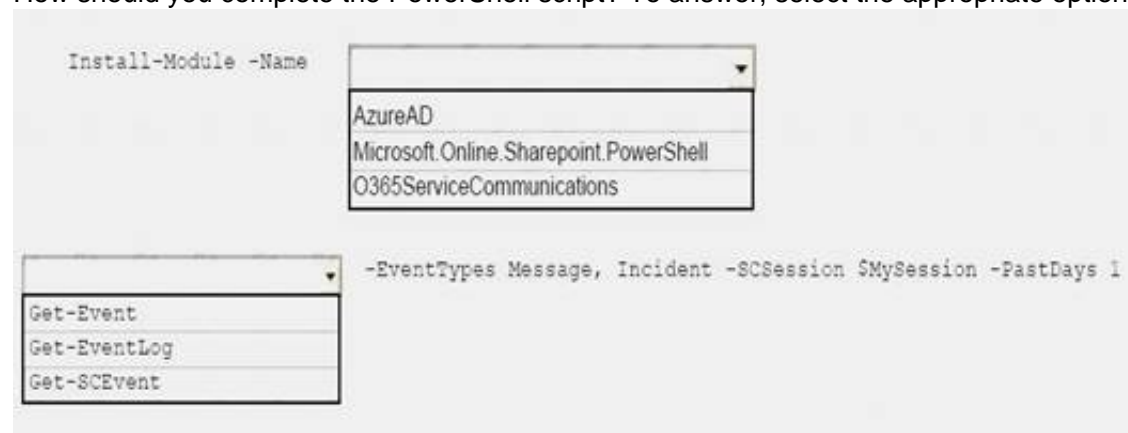
#### NEW QUESTION 57

- (Exam Topic 1)

You have a Microsoft SharePoint Online subscription.

You need to create a PowerShell script to retrieve planned changes and service information from Microsoft 365.

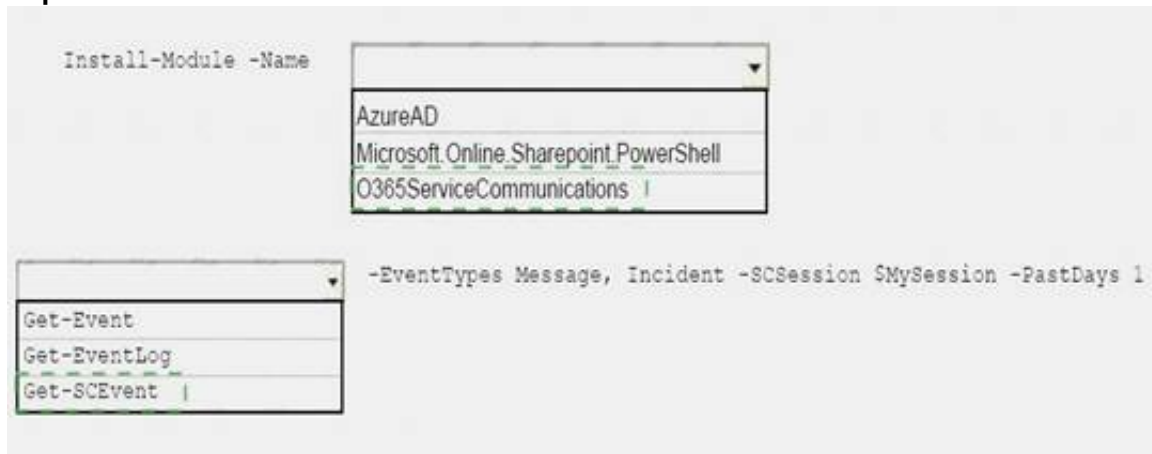
How should you complete the PowerShell script? To answer, select the appropriate options in the answer area. NOTE: Each correct selection is worth one point.



- A. Mastered
- B. Not Mastered

**Answer:** A

**Explanation:**



#### NEW QUESTION 59

- (Exam Topic 1)

Your company is switching from Microsoft Skype for Business to Microsoft Teams.

You need to verify how many users in Teams are active this month, and how many Teams users were active the previous month.

Which report should you use?

- A. Active users(%)
- B. Active users
- C. MOMReturningUsers(%)
- D. MOMReturingUsers

**Answer:** D

**Explanation:**

References:

<https://docs.microsoft.com/en-us/office365/admin/usage-analytics/usage-analytics-data-model?view=o365-worl>

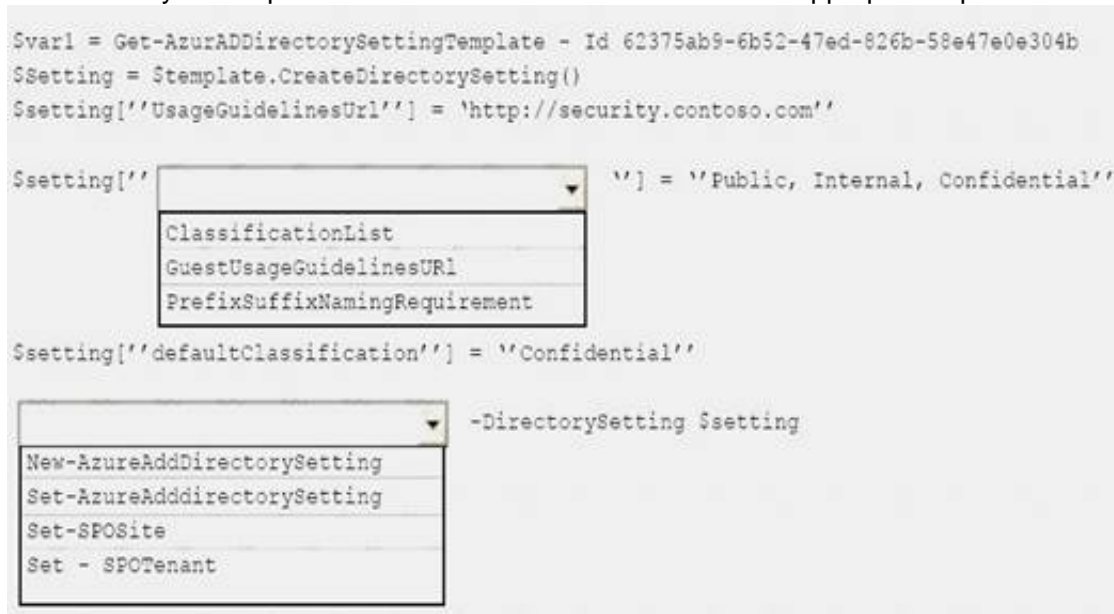
#### NEW QUESTION 64

- (Exam Topic 1)

You have a Microsoft 365 subscription.

You need to ensure that when users create a site, they can specify the sensitivity of the site.

How should you complete the command? To answer select the appropriate options m the answer area. NOTE: Each correct selection is worth one point.



- A. Mastered
- B. Not Mastered

**Answer:** A

**Explanation:**

References:

<https://docs.microsoft.com/en-us/sharepoint/dev/solution-guidance/modern-experience-site-classification>

#### NEW QUESTION 65

- (Exam Topic 2)

You need to configure retention for OneDrive. The solution must meet the technical requirements. How should you complete the command? To answer, select the appropriate options in the answer area.

NOTE: Each correct selection is worth one point.



<div><div></div><div>Set-SPOSite</div><div>Set-SPOTenant</div><div>Set-SPOTenantSyncClientRestriction</div><div>Set-SPOUser</div></div>	<div><div></div><div>-LockState</div><div>-OneDriveStorageQuota</div><div>-OrphanedPersonalSitesRetentionPeriod</div><div>-RequireAnonymousLinkExpireDays</div></div>	90
---	---	----

- A. Mastered
- B. Not Mastered

**Answer:** A

**Explanation:**

References:

<https://docs.microsoft.com/en-us/powershell/module/sharepoint-online/set-spotenant?view=sharepoint-ps>

**NEW QUESTION 67**

- (Exam Topic 2)

You need to block the media files to meet the technical requirements. What should you do?

- A. From the SharePoint admin center, modify the properties of the OneDrive for Business site collection.
- B. From the SharePoint admin center, modify the Access control settings.
- C. From the OneDrive admin center, modify the Sync settings.
- D. From the OneDrive admin center, modify the Compliance settings.

**Answer:** C

**Explanation:**

References:

<https://docs.microsoft.com/en-us/onedrive/block-file-types>

**NEW QUESTION 70**

- (Exam Topic 2)

You need to meet the technical requirements for the finance department site collection. What should you do?

- A. From the Security & Compliance admin center, create a classification label policy.
- B. From the SharePoint admin center, select the finance department site collection, and then configure the Sharing settings.
- C. From the Security & Compliance admin center, create a permission policy.
- D. From the SharePoint admin center, select Sharing, and then select Limit external sharing using domains

**Answer:** B

**Explanation:**

References:

<https://docs.microsoft.com/en-us/sharepoint/restricted-domains-sharing?redirectSourcePath=%252fen-us%252fa>

**NEW QUESTION 74**

- (Exam Topic 2)

You need to recommend an identity model that meets the technical requirements. Which Identity model should you recommend?

- A. Synchronized Identity
- B. Cloud Identity
- C. Federated Identity

**Answer:** A

**NEW QUESTION 76**

.....

## Thank You for Trying Our Product

\* 100% Pass or Money Back

All our products come with a 90-day Money Back Guarantee.

\* One year free update

You can enjoy free update one year. 24x7 online support.

\* Trusted by Millions

We currently serve more than 30,000,000 customers.

\* Shop Securely

All transactions are protected by VeriSign!

**100% Pass Your MS-300 Exam with Our Prep Materials Via below:**

<https://www.certleader.com/MS-300-dumps.html>