

Exam Questions AZ-300

Microsoft Azure Architect Technologies

<https://www.2passeasy.com/dumps/AZ-300/>



NEW QUESTION 1

- (Exam Topic 2)

You need to resolve a notification latency issue.

Which two actions should you perform? Each correct answer presents part of the solution. NOTE: Each correct selection is worth one point.

- A. Ensure that the Azure Function is set to use a consumption plan.
- B. Set Always On to false
- C. Set Always On to true
- D. Ensure that the Azure Function is using an App Service plan.

Answer: AC

NEW QUESTION 2

- (Exam Topic 2)

You need to ensure that the Policy service can implement the policy actions. Which code segment should you insert at line EG07 in EventGridController.cs?

- A.

```
if (HttpContext.Request.Headers["aeg-event-type"].FirstOrDefault()
    == "SubscriptionValidation")
{
    return new JsonResult(new
    {
        validationResponse = events[0]["validationCode"]
    });
}
```
- B.

```
if (events[0]["eventType"].ToString() == "SubscriptionValidation")
{
    return new JsonResult(new
    {
        validationResponse = events[0]["validationCode"]
    });
}
```
- C.

```
if (HttpContext.Request.Headers["aeg-event-type"].FirstOrDefault() ==
    "SubscriptionValidation")
{
    return new JsonResult(new
    {
        validationResponse = events[0]["data"]["validationCode"]
    });
}
```
- D.

```
if (events[0]["subject"].ToString() == "SubscriptionValidation")
{
    return new JsonResult(new
    {
        validationResponse = events[0]["data"]["validationCode"]
    });
}
```

- A. Option A
- B. Option B
- C. Option C
- D. Option D

Answer: C

NEW QUESTION 3

- (Exam Topic 2)

You need to ensure that the solution can meet the scaling requirements for Policy Service. Which Azure Application Insights data model should you use?

- A. an Application Insights trace
- B. an Application Insights metric
- C. an Application Insights dependency
- D. an Application Insights event

Answer: B

NEW QUESTION 4

- (Exam Topic 3)
You need to meet the technical requirement for VM4. What should you create and configure?

- A. an Azure Event Hub
- B. an Azure Notification Hub
- C. an Azure Logic App
- D. an Azure Service Bus

Answer: C

NEW QUESTION 5

- (Exam Topic 4)
You need to configure AG1. What should you create?

- A. a basic routing rule
- B. a multi-site listener
- C. a basic listener
- D. a URL path-based routing rule

Answer: D

Explanation:

References:
<https://docs.microsoft.com/en-us/azure/application-gateway/application-gateway-create-url-route-portal>

NEW QUESTION 6

- (Exam Topic 5)
You are developing a workflow solution using Azure technologies.
What should you implement to meet each requirement? To answer, select the appropriate options in the answer area.
NOTE: Each correct selection is worth one point.

Requirement	Tool
Debug the solution by using Visual Studio.	<div><div></div><div>Durable functions only</div><div>Logic Apps only</div><div>Durable functions and Logic Apps</div></div>
Use a collection of ready-made actions.	<div><div></div><div>Durable functions only</div><div>Logic Apps only</div><div>Durable functions and Logic Apps</div></div>
Deploy the component by using Visual Studio Team Services.	<div><div></div><div>Durable functions only</div><div>Logic Apps only</div><div>Durable functions and Logic Apps</div></div>

- A. Mastered
- B. Not Mastered

Answer: A

Explanation:

Requirement	Tool
Debug the solution by using Visual Studio.	<div><div></div><div>Durable functions only</div><div>Logic Apps only</div><div>Durable functions and Logic Apps</div></div>
Use a collection of ready-made actions.	<div><div></div><div>Durable functions only</div><div>Logic Apps only</div><div>Durable functions and Logic Apps</div></div>
Deploy the component by using Visual Studio Team Services.	<div><div></div><div>Durable functions only</div><div>Logic Apps only</div><div>Durable functions and Logic Apps</div></div>

NEW QUESTION 7

- (Exam Topic 5)

You are developing a web app that uses a REST interface to connect to Azure Storage with HTTPS. This app uploads and streams video content that can be accessed from anywhere in the world.

You have different storage requirements for each part of the app. A hierarchical namespace must be created. Which storage services should you implement? To answer, select the appropriate services to the correct actions. Each service may be used once, more than once, or not at all. You may need to drag the split bar between panes or scroll to view content.

NOTE: Each correct selection is worth one point.

Storage services	Answer Area	
	Action	Storage service
Azure Blobs	Stream video content.	
Azure Table Storage	Perform random read/write operations.	
Azure HDInsight	Access application data from anywhere.	

- A. Mastered
- B. Not Mastered

Answer: A

Explanation:

Storage services	Action	Storage service
Azure Blobs	Stream video content.	Azure Blobs
Azure Table Storage	Perform random read/write operations.	Azure Blobs
Azure HDInsight	Access application data from anywhere.	Azure Blobs

NEW QUESTION 8

- (Exam Topic 5)

You have an Azure subscription named Subscription 1.

In Subscription1, you create an Azure file share named share1.

You create a shared access signature (SAS) named SAS1 as shown in the following exhibit.

Allowed services ⓘ

☐ Blob ☒ File ☐ Queue ☐ Table

Allowed resource types ⓘ

☒ Service ☒ Container ☒ Object

Allowed permissions ⓘ

☒ Read ☒ Write ☐ Delete ☒ List ☐ Add ☐ Create ☐ Update ☐ Process

Start and expiry date/time ⓘ

Start

2018-09-01 2:00:00 PM

End

2018-09-14 2:00:00 PM

(UTC+02:00) --- Current Timezone ---

Allowed IP addresses ⓘ

193.77.134.10-193.77.134.50

Allowed protocols ⓘ

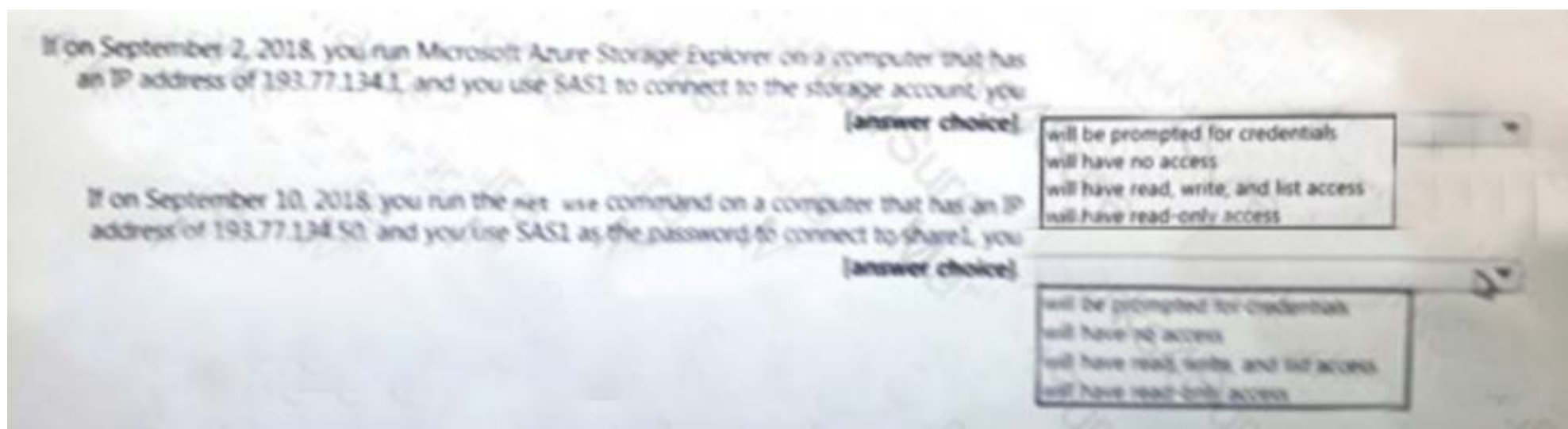
☒ HTTPS only ☐ HTTPS and HTTP

Signing key ⓘ

key1

Generate SAS and connection string

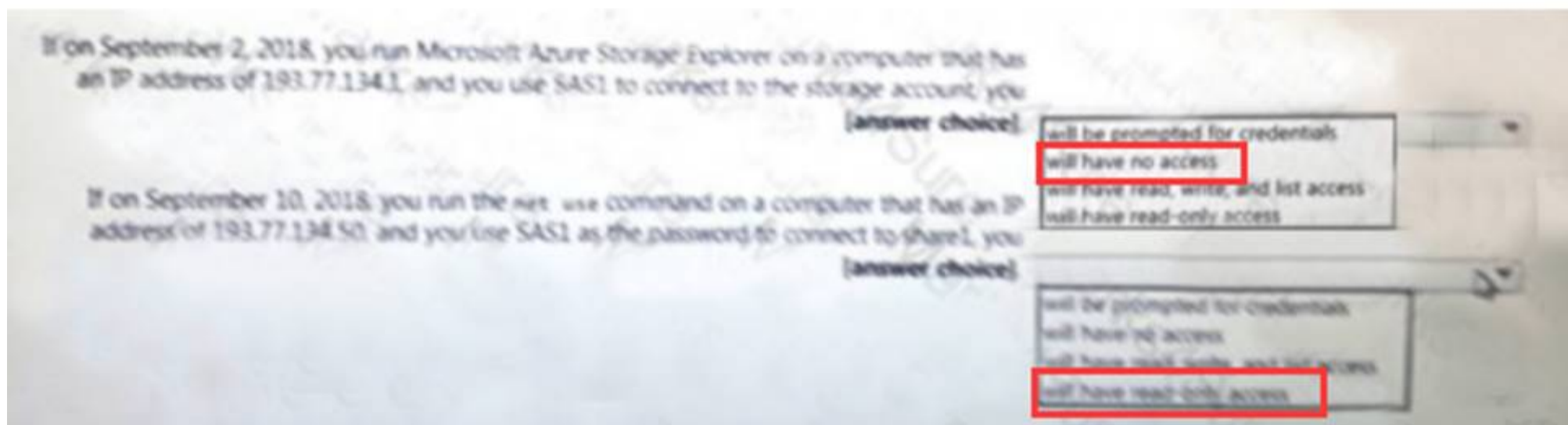
To answer, select the appropriate options in the answer area. NOTE: Each correct selection is worth one point.



- A. Mastered
B. Not Mastered

Answer: A

Explanation:



NEW QUESTION 9

- (Exam Topic 5)

Note: This question is part of a series of questions that present the same scenario. Each question in the series contains a unique solution that might meet the stated goals.

Some question sets might have more than one correct solution, while others might not have a correct solution. After you answer a question in this section, you will NOT be able to return to it. As a result these questions will not appear in the review screen.

You have an Azure Active Directory (Azure AD) tenant named Adatum and an Azure Subscription named Subscription 1. Adatum contains a group named Developers. Subscription1 contains a resource group named Dev.

You need to provide the Developers group with the ability to create Azure logic apps in the Dev resource group.

Solution: On Subscription1, you assign the DevTest Labs User role to the Developers group. Does this meet the goal?

- A. Yes
B. NO

Answer: B

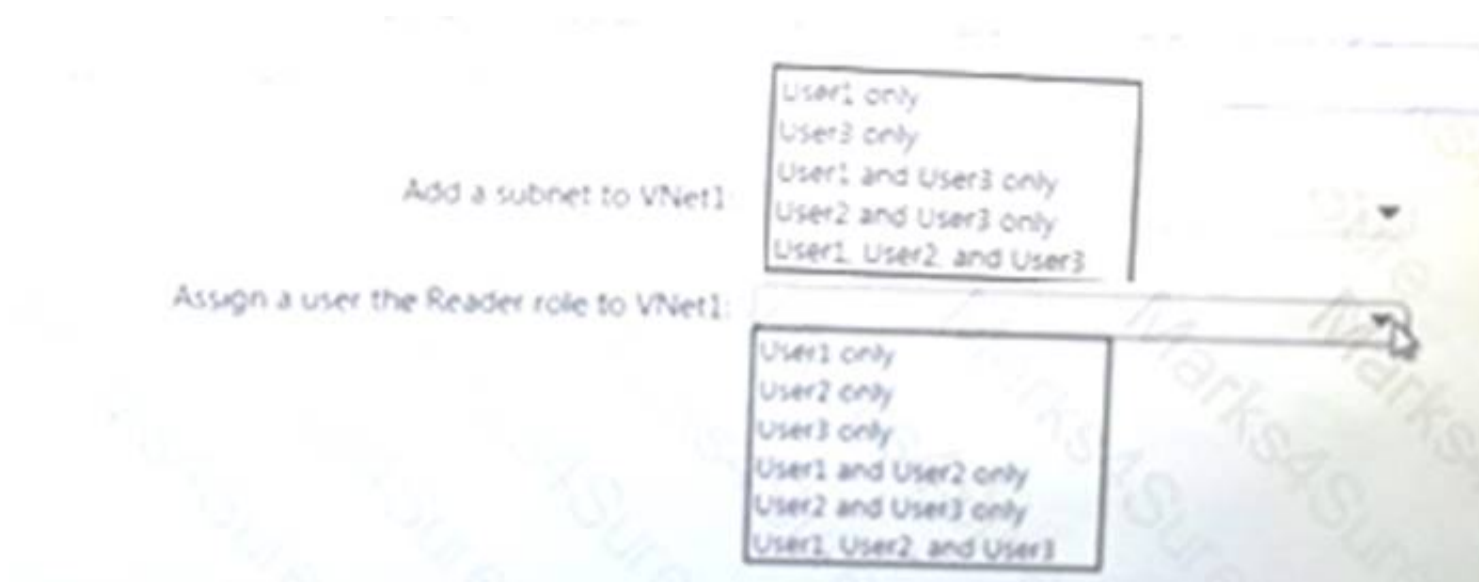
NEW QUESTION 10

- (Exam Topic 5)

You have an Azure subscription named Subscription1 that contains a virtual network named VNet1. You add the users in the following table.

User	Role
User1	Owner
User2	Security Admin
User3	Network Contributor

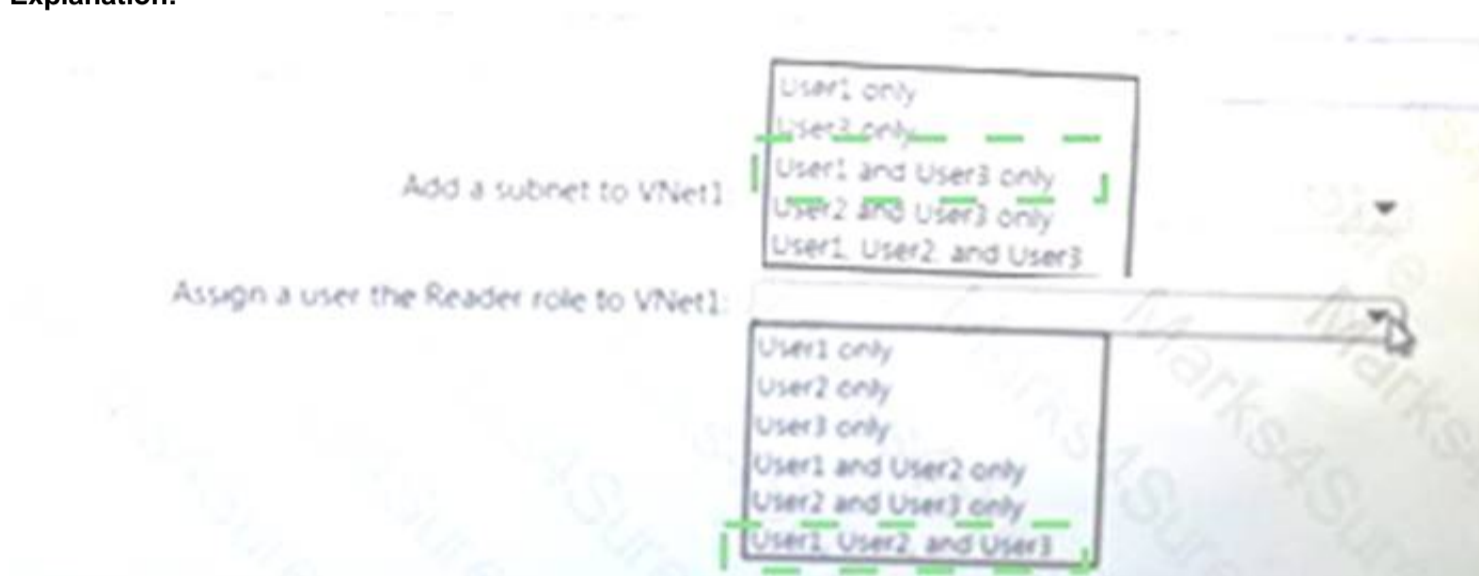
Which user can perform each configuration? To answer, select the appropriate options in the answer area. NOTE: Each correct selection is worth one point.



- A. Mastered
- B. Not Mastered

Answer: A

Explanation:



NEW QUESTION 10

- (Exam Topic 5)

You develop software solutions for a web services company. You have the following code. (Line numbers are for reference only.)

```

01 public class MessagesController : ApiController
02 {
03     public async Task<HttpResponseMessage> Post([FromBody]Activity activity)
04     {
05         if (activity.GetActivityType() == ActivityTypes.Message)
06         {
07             await Conversation.SendAsync(activity, () => new Dialogs.RootDialog());
08         }
09         else
10         {
11             HandleSystemMessage(activity);
12         }
13         var response = Request.CreateResponse(HttpStatusCode.OK);
14         return response;
15     }
16 }
17 [Serializable]
18 public class RootDialog : IDialog<object>
19 {
20     public Task StartAsync(IDialogContext context)
21     {
22         context.Wait(MessageReceivedAsync);
23         return Task.CompletedTask;
24     }
25     public virtual async Task MessageReceivedAsync(IDialogContext context, IAwaitable<IMessageActivity> result)
26     {
27         var message = await result;
28         if (message.Text.ToLower().Contains("help") || message.Text.ToLower().Contains("support"))
29         {
30             await context.Forward(new SupportDialog(), this.ResumeAfterSupportDialog, message);
31         }
32         else
33         {
34             await context.PostAsync($"Hello. I can help you with the following keywords : help | support");
35             context.Wait(MessageReceivedAsync);
36         }
37     }
38     private async Task ResumeAfterSupportDialog(IDialogContext context, IAwaitable<object> result)
39     {
40         try
41         {
42             var message = await result;
43         }
44         finally
45         {
46             context.Wait(this.MessageReceivedAsync);
47         }
48     }
49 }

```

You need to implement an immediate response customer support solution for the company's website. For each of the following statements, select, Yes if the statement is true. Otherwise, select No.

NOTE: Each correct selection is worth one point.

- | | Yes | No |
|---|-----------------------|-----------------------|
| A child dialog will handle any messages that contain the word support . | <input type="radio"/> | <input type="radio"/> |
| RootDialog will return to the top of the stack after SupportDialog handles a request. | <input type="radio"/> | <input type="radio"/> |

- A. Mastered
- B. Not Mastered

Answer: A

Explanation:



NEW QUESTION 12

- (Exam Topic 5)

Note: This question is part of series of questions that present the same scenario. Each question in the series contains a unique solution that might meet the stated goals. Some question sets might have more than one correct solution, while others might not have a correct solution.

After you answer a question in this section, you will NOT be able to return to it. As a result, these questions will not appear in the review screen.

A company backs up data to on-premises servers at their main facility. The company currently has 30 TB of archived data that infrequently used. The facility has download speeds of 100 Mbps and upload speeds of 20 Mbps.

You need to securely transfer all backups to Azure Blob Storage for long-term archival. All backup data must be sent within seven days.

Solution: Backup data to local disks and use the Azure Import/Export service to send backups to Azure Blob Storage.

Does this meet the goal?

- A. Yes
- B. No

Answer: A

NEW QUESTION 14

- (Exam Topic 5)

You are developing an application that consists of an ASP.NET Core Web API website and a WebJob that starts automatically and runs continuously. You are building the deployment process for the application.

You need to ensure that both the website and the WebJob are deployed.

How should you structure the deployment folders? To answer, drag the appropriate path segments to the correct locations. Each path segment may be used once, more than once, or not at all. You may need to drag the split bar between panes or scroll to view content.

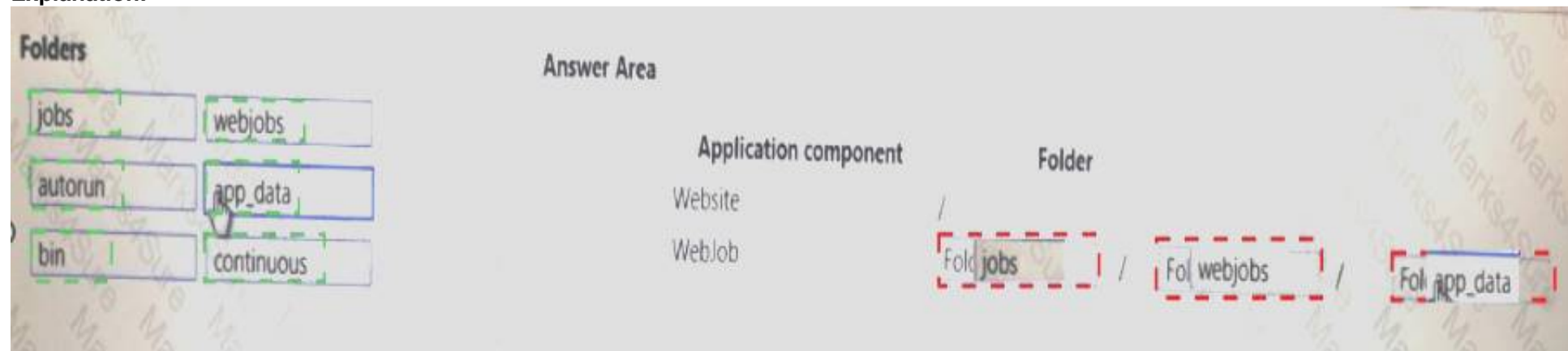
NOTE: Each correct selection is worth one point.



- A. Mastered
- B. Not Mastered

Answer: A

Explanation:



NEW QUESTION 16

- (Exam Topic 5)

You create an Azure Time Series Insights event handler. You need to send data over the network as efficiently as possible and optimize query performance. What should you do?

- A. Create a query plan
- B. Send all properties
- C. Use a Tag ID
- D. Use reference data

Answer: D

Explanation:

References:
<https://docs.microsoft.com/en-us/azure/time-series-insights/how-to-shape-query-json>

NEW QUESTION 18

- (Exam Topic 5)

You download an Azure Resource Manager template based on an existing virtual machine. The template will be used to deploy 100 virtual machines. You need to modify the template to reference an administrative password. You must prevent the password from being stored in plain text. What should you create to store the password?

- A. an Azure Key Vault and an access policy.
- B. an Azure Storage account and an access policy.
- C. Azure Active Directory (AD) Identity Protection and an Azure policy.
- D. a Recovery Services vault and a backup policy.

Answer: A

NEW QUESTION 23

- (Exam Topic 5)

Note: This question is part of a series of questions that present the same scenario. Each question in the series contains a unique solution that might meet the stated goals.

Some question sets might have more than one correct solution, while others might not have a correct solution. After you answer a question in this section, you will NOT be able to return to it. As a result these questions will not appear in the review screen.

You have an Azure Active Directory (Azure AD) tenant named Adatum and an Azure Subscription1 named Subscription1. Adatum contains a group named Developers. Subscnpbn1 contains a resource group named Dev.

You need to provide the Developers group with the ability to create Azure logic apps in the Dev resource group.

Solution: On Subscription1, you assign the logic App Operator role to the Developers group. Does this meet the goal?

- A. Yes
- B. NO

Answer: B

NEW QUESTION 27

- (Exam Topic 5)

You are developing a solution that requires serverless code execution in Azure. The solution has two functions that must run in a specific order.

You need to ensure that the second function can use the output from the first function.

How should you complete the code? To answer, select the appropriate options in the answer area. NOTE: Each correct selection is worth one point.

```

public static async Task<object> Run (
    {
    try
    {
var flResult = await c.
return await c.
    }
    catch (Exception e)
    {
    ...
    }
    }

```

DurableOrchestrationContext
DurableActivityContext
DurableOrchestrationClient
DurableOrchestrationStatus

C)

CallActivityAsync
CallSuborchestratorAsync
WaitForExternalEvent

<object>("AzureFunction01", null);

CallActivityAsync
CallSubOrchestratorAsync
WaitForExternalEvent

<object>("AzureFunction02", flResult);

- A. Mastered
 B. Not Mastered

Answer: A

Explanation:

```

public static async Task<object> Run (
    {
    try
    {
var flResult = await c.
return await c.
    }
    catch (Exception e)
    {
    ...
    }
    }

```

DurableOrchestrationContext
DurableActivityContext
DurableOrchestrationClient
DurableOrchestrationStatus

C)

CallActivityAsync
CallSuborchestratorAsync
WaitForExternalEvent

<object>("AzureFunction01", null);

CallActivityAsync
CallSubOrchestratorAsync
WaitForExternalEvent

<object>("AzureFunction02", flResult);

NEW QUESTION 31

- (Exam Topic 5)
You are creating an app that uses Event Grid to connect with other services. Your app's event data will be sent to a serverless function that checks compliance. This function is maintained by your company.
You write a new event subscription at the scope of your resource. The event must be invalidated after a specific period of time.
You need to configure Event Grid to ensure security.
What should you implement? To answer, select the appropriate options in the answer area. NOTE: Each correct selection is worth one point.

Authentication

WebHook event delivery

Type

SAS tokens

Key authentication

JWT token

Topic publishing

ValidationCode handshake

ValidationURL handshake

Management Access Control

- A. Mastered
- B. Not Mastered

Answer: A

Explanation:
References:
<https://docs.microsoft.com/en-us/azure/event-grid/security-authentication>

NEW QUESTION 33

- (Exam Topic 5)
Your company has offices in New York and Los Angeles.
You have an Azure subscription that contains an Azure virtual network named VNet1. Each office has a site-to-site VPN connection to VNet1.
Each network uses the address spaces shown in the following table:

Location	IP address space
VNet1	192.168.0.0/20
New York	10.0.0.0/16
Los Angeles	10.10.0.0/16

You need to ensure that all Internet-bound traffic from VNet1 is routed through the New York office. What should you do? To answer, select the appropriate options in the answer area.
NOTE: Each correct selection is worth one point.

In Azure, run:

New-AzureRmLocalNetworkGateway

New-AzureRmVirtualNetworkGatewayConnection

Set-AzureRmVirtualNetworkGatewayDefaultSite

On a VPN device in the New York office, set the traffic selectors to:

0.0.0.0/0

10.0.0.0/16

192.168.0.0/20

- A. Mastered
- B. Not Mastered

Answer: A

Explanation:

In Azure, run:

	V
New-AzureRmLocalNetworkGateway	
New-AzureRmVirtualNetworkGatewayConnection	
Set-AzureRmVirtualNetworkGatewayDefaultSite	

On a VPN device in the New York office, set the traffic selectors to:

	V
0.0.0.0/0	
10.0.0.0/16	
192.168.0.0/20	

NEW QUESTION 37

- (Exam Topic 5)

You plan to migrate an on-premises Hyper-V environment to Azure by using Azure Site Recovery. The Hyper-V environment is managed by using Microsoft System Center Virtual Machine Manager (VMM).

The Hyper-V environment contains the virtual machines in the following table:

Name	Operating system (OS)	OS disk size	BitLocker Drive Encryption (BitLocker) enabled on OS disks.	Generation
DC1	Windows Server 2016	500 GB	No	2
FS1	Ubuntu 16.04 LTS	200 GB	No	2
CA1	Windows Server 2012 R2	1 TB	Yes	1
SQL1	Windows Server 2016	200 GB	No	1

Which virtual machine can be migrated by using Azure Site Recovery? Which virtual machine can be migrated by using Azure Site Recovery?

- A. FS1
- B. CA1
- C. DC1
- D. SQL1

Answer: D

Explanation:

References:

<https://docs.microsoft.com/en-us/azure/site-recovery/hyper-v-azure-support-matrix#azure-vm-requirements>

NEW QUESTION 41

- (Exam Topic 5)

You have an Azure Active Directory (Azure AD) tenant that has the initial domain name. You have a domain name of contoso.com registered at a third-party registrar.

You need to ensure that you can create Azure AD users that have names containing a suffix of @contoso.com. Which three actions should you perform in sequence? To answer, move the appropriate cmdlets from the list of cmdlets to the answer area and arrange them in the correct order.

Actions	Answer Area
Add an Azure AD tenant.	
Create an Azure DNS zone.	
Verify the domain.	
Configure company branding.	
Add a record to the public contoso.com DNS zone.	
Add a custom domain name.	

- A. Mastered
- B. Not Mastered

Answer: A

Explanation:

References:

<https://docs.microsoft.com/en-us/azure/active-directory/fundamentals/add-custom-domain>

NEW QUESTION 44

- (Exam Topic 5)

You are developing an Azure Durable Function instance. You need to add a delay by using a durable timer. What type of function should you use?

- A. Orchestrator
- B. web hook
- C. Client
- D. Activity

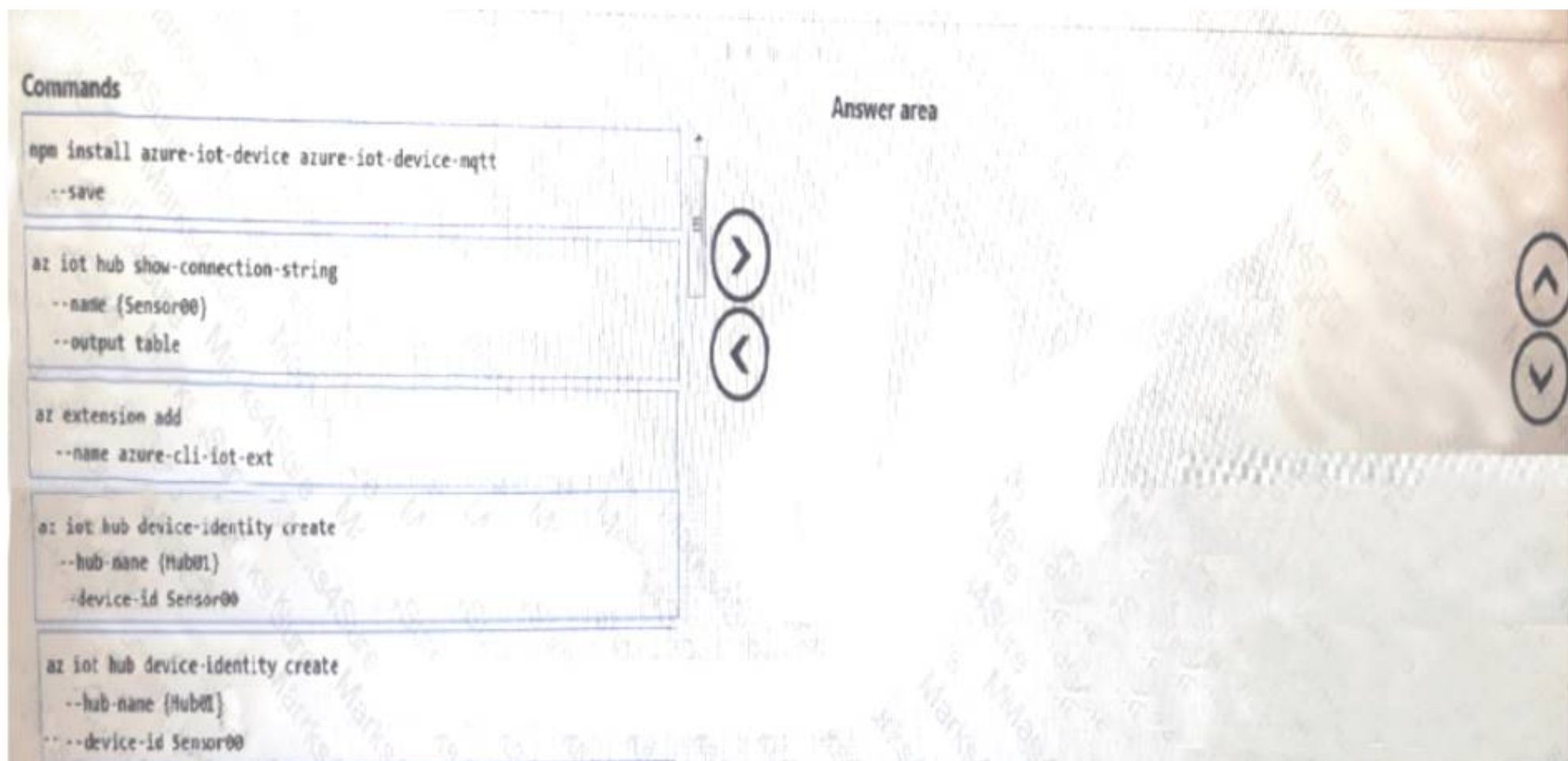
Answer: D

NEW QUESTION 45

- (Exam Topic 5)

You develop an IoT solution by using Nodejs. The solution is ready to deploy to the production environment. You must implement the device twin capabilities of Azure IoT Hub. You must register a sensor named Sensor00. The IoT Hub name is Hub01.

You need to register the endpoint with ContosoHub01 so that you can configure them from your solution. Which four commands should you use to develop the solution? To answer, move the appropriate commands from the list of commands to the answer area and arrange them in the correct order.



- A. Mastered
- B. Not Mastered

Answer: A

Explanation:

az extension add --name azure-cli-iot-ext

NEW QUESTION 48

- (Exam Topic 5)

You are developing a stateful service to deploy to Azure Service Fabric. You plan to implement the RunAsync method.

You need to implement the methods to interface with an instance of the IReliable dictionary interface to increment a count each time the service is called. The first time the service is called, you must initialize the count to 1 if it does not yet exist and then update it by one each time it is called.

Which three methods should you run in sequence? To answer, move the appropriate methods from the list of methods to the answer area and arrange them in the correct order.



- A. Mastered
- B. Not Mastered

Answer: A

Explanation:



NEW QUESTION 51

- (Exam Topic 5)

You have the following resource groups:

Resource group	Comments
DevServer_WestCentralUS	This resource group is located in the West Central US region and contains a single virtual machine (VM) named DevServer. DevServer is connected to a private subnet in an Azure Virtual Network that has no internet access.
Workstation_EastUS	This resource group is located in the East US region and contains a VM named DevWorkstation. DevWorkstation is connected to a subnet in a Virtual Network and is configured with a public IP address. A network security group has been configured to allow public incoming remote desktop protocol (RDP) connections to the DevWorkstation.

Developers must connect to Dev Server only through Dev Workstation. To maintain security, Dev Server must not accept connections from the internet. You need to create a private connection between the Dev Workstation and Dev Server. Dev Workstation using their private IP addresses. Does the solution meet the goal?

- A. Yes
- B. NO

Answer: A

NEW QUESTION 56

- (Exam Topic 5)

You have an Azure Active Directory (Azure AD) tenant.

You have an existing Azure AD conditional access policy named Policy1. Policy1 enforces the use of Azure AD-joined devices when members of the Global Administrators group authenticate to Azure AD from untrusted locations.

You need to ensure that members of the Global Administrators group will also be forced to use multi-factor authentication when authenticating from untrusted locations.

What should you do?

- A. From the Azure portal, modify session control of Policy1.
- B. From multi-factor authentication page, modify the user settings.
- C. From multi-factor authentication page, modify the service settings.
- D. From the Azure portal, modify grant control of Policy1.

Answer: D

NEW QUESTION 59

- (Exam Topic 5)

You have an Azure Active Directory (Azure AD) tenant named contosodoud.onmicrosoft.com. Your company has a public DNS zone for contoso.com.

You add contoso.com as a custom domain name to Azure AD You need to ensure that Azure can verify the domain name. Which type of DNS record should you create?

- A. PTR
- B. TXT
- C. NSEC3
- D. DNSKEY

Answer: B

NEW QUESTION 63

- (Exam Topic 5)

You are creating a bot for a company by using QnA Maker.

You need to ensure that the company can update the bot without third-party assistance. What should you use? To answer, select the appropriate options in the answer area. NOTE: Each correct selection is worth one point.

Scenario	Component
Add customer question/answer content.	<input type="checkbox"/> V QnA Maker runtime QnA Maker management service.
Use an Azure Application Insights resource for analytics.	<input type="checkbox"/> V QnA Maker runtime QnA Maker management service.
Update and train a knowledge base.	<input type="checkbox"/> V QnA Maker runtime QnA Maker management service.

- A. Mastered
- B. Not Mastered

Answer: A

Explanation:

References:
<https://docs.microsoft.com/en-us/azure/cognitive-services/qnamaker/overview/overview>

NEW QUESTION 65

- (Exam Topic 5)
You plan to deploy five virtual machines to a virtual network subnet.
Each virtual machine will have a public IP address and a private IP address. Each virtual machine requires the same inbound and outbound security rules.
What is the minimum number of network interfaces and network security groups that you require? To answer, select the appropriate options in the answer area.
NOTE: Each correct selection is worth one point.

Minimum number of network interfaces:

	▼
5	
10	
15	
20	

Minimum number of network security groups:

	▼
1	
2	
5	
10	

- A. Mastered
- B. Not Mastered

Answer: A

Explanation:

Minimum number of network interfaces:

	▼
5	
10	
15	
20	

Minimum number of network security groups:

	▼
1	
2	
5	
10	

NEW QUESTION 69

- (Exam Topic 5)
You have the following resource groups:

Resource group	Comments
DevServer_WestCentralUS	This resource group is located in the West Central US region and contains a single virtual machine (VM) named DevServer. DevServer is connected to a private subnet in an Azure Virtual Network that has no internet access.
Workstation_EastUS	This resource group is located in the East US region and contains a VM named DevWorkstation. DevWorkstation is connected to a subnet in a Virtual Network and is configured with a public IP address. A network security group has been configured to allow public incoming remote desktop protocol (RDP) connections to the DevWorkstation.

Developers must connect to Dev Server only through Dev Workstation. To maintain security, DevS erver must not accept connections from the internet. You need to create a private connection between the Dev Workstation and Dev St Solution: Configure an IP address on each subnet within the same address space. Does the solution meet the goal?

- A. Yes
- B. NO

Answer: B

NEW QUESTION 70

- (Exam Topic 5)

You have a task that includes a WebJob that should run continuously. The WebJob Log exhibit shows the text that is displayed when the WebJob runs. (Click the WebJob Log tab.)

Continuous WebJob Details WebJob1

Pending restart
 Run commans: WebJob1.exe

[Toggle Output](#)

Refreshed a moment ago, [refresh](#) or [download](#)

```
[08/18/2018 17:28:24 > e013ed:SYS INFO] Run script 'WebJob1.exe' with script host -
'WindowsScriptHost'
[08/18/2018 17:28:24 > e013ed:SYS INFO]Status changed to Running
[08/18/2018 17:28:25 > e013ed:INFO] WebJob Started
[08/18/2018 17:28:25 > e013ed:SYS INFO] Status changed to Success
[08/18/2018 17:28:25 > e013ed:SYS INFO] Process went down waiting for 60 seconds
[08/18/2018 17:28:25 > e013ed:SYS INFO] Status changed to PendingRestart
```

The WebJob is configured as shown in the WebJob Configuration exhibit. (Click the WebJob Configuration tab.)

WebApp0909 - WebJobs

App Service

Search (Ctrl+/)

SETTINGS

Authentication / Authorization

Application Insights

Managed service identity

Backups

Custom domains

SSL certificates

Networking

Scale up (App Service plan)

Scale out (App Service plan)

WebJobs

+ Add

Refresh

Logs

Delete

Properties

WebJobs

WebJobs provide an easy way to run scripts or programs as background processes in the context of your app.

NAME	TYPE	STATUS	SCHEDULE
WebJob1	Continuous	Pending Restart	n/a

The WebJob is not functioning as expected. The WebJob Code exhibit has a comment that shows where code should be added. (Click the WebJob Code tab.)

```

0 references
8 class Program
9 {
10 private static Timer workTimer = new Timer();
11
12 | 0 references
12 static void Main()
13 {
14 |     Trace.WriteLine("WebJob Setup Starting");
15 |     var config = new JobHostConfiguration();
16 |
17 |     if (config.IsDevelopment)
18 |     {
19 |         config.UseDevelopmentSettings()
20 |     }
21 |
22 |     workTimer.Interval = TimeSpan.FromSeconds(10).TotalMilliseconds;
23 |     workTimer.Elapsed += WorkTimer_Elapsed;
24 |     workTimer.AutoReset = true;
25 |     workTimer.Enabled = true;
26 |
27 |     Console.WriteLine("WebJob Started");
28 | }
28
29 | 1 reference
30 private static void WorkTimer_Elapsed(object sender, ElapsedEventArgs e)
31 {
32 |     Console.WriteLine("Workload Processing ");
33 |     //ToDo-Implement code
34 |     Trace.WriteLine("Workload Complete");
35 | }
36 }
37

```

You need to identify any issues with the WebJob. For each of the following statements, select Yes if the statement is true. Otherwise, select No.
 NOTE: Each correct selection is worth one point.

	Yes	No
The WebJob will run continuously as the code is written.	<input type="radio"/>	<input type="radio"/>
The text WebJob Setup Srarting will output to the WebJob Logs.	<input type="radio"/>	<input type="radio"/>
The timer-elapsed code will be invoked and run at least once.	<input type="radio"/>	<input type="radio"/>
The WebJob settings are properly configured in the Azure portal.	<input type="radio"/>	<input type="radio"/>

A. Mastered
 B. Not Mastered

Answer: A

Explanation:

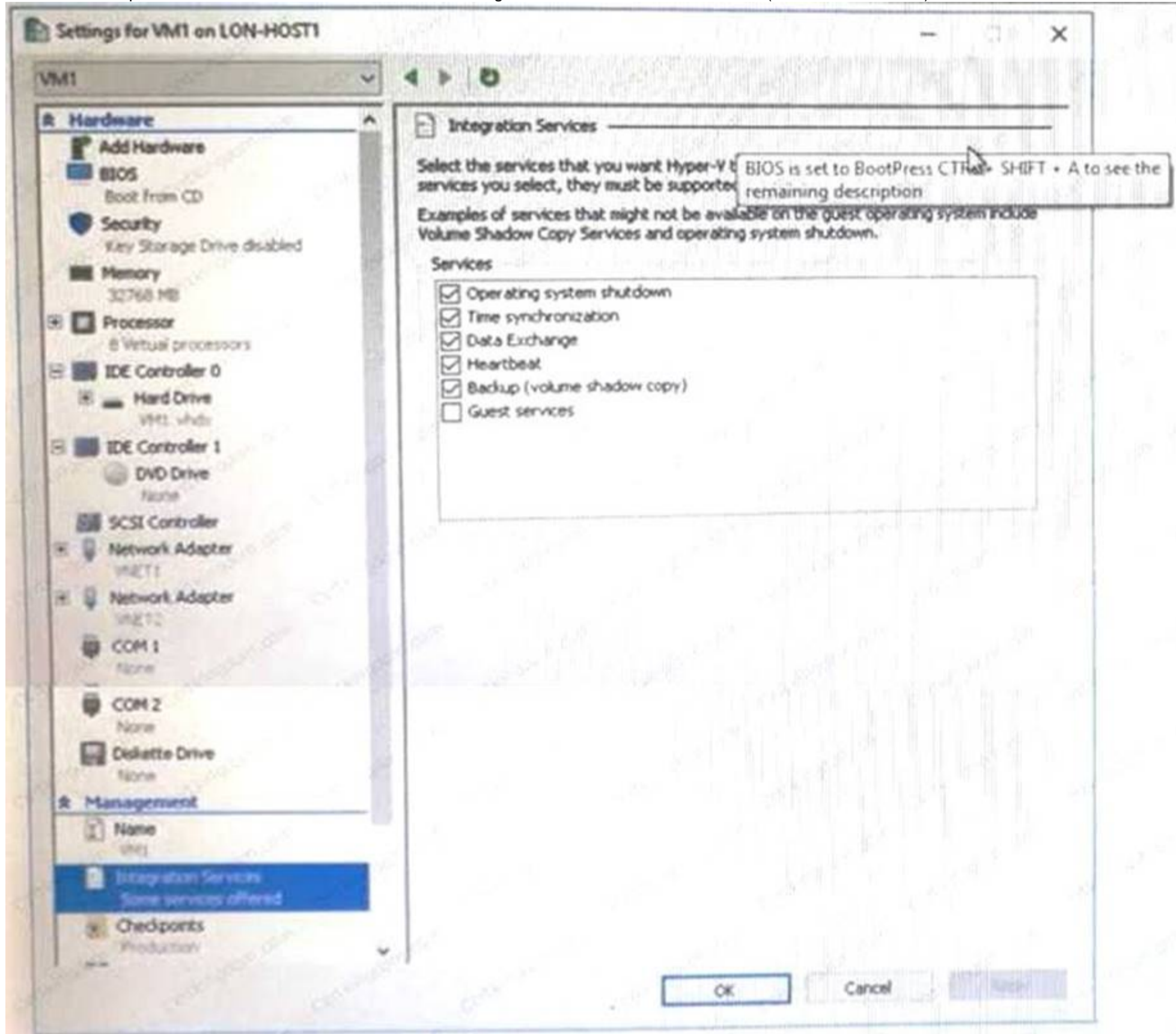
	Yes	No
The WebJob will run continuously as the code is written.	<input type="radio"/>	<input checked="" type="radio"/>
The text WebJob Setup Srarting will output to the WebJob Logs.	<input type="radio"/>	<input checked="" type="radio"/>
The timer-elapsed code will be invoked and run at least once.	<input checked="" type="radio"/>	<input type="radio"/>
The WebJob settings are properly configured in the Azure portal.	<input checked="" type="radio"/>	<input type="radio"/>

NEW QUESTION 71

- (Exam Topic 5)

You have an Azure subscription.

You have an on-premises virtual machine named VM1. The settings for VM1 are shown in the exhibit. (Click the Exhibit tab.)



You need to ensure that you can use the disks attached to VM1 as a template for Azure virtual machines. What should you modify on VM1?

- A. the hard drive
- B. Integration Services
- C. the memory
- D. the network adapters
- E. the processor

Answer: C

NEW QUESTION 72

- (Exam Topic 5)

A company is developing a solution that allows smart refrigerators to send temperature information to a central location. The solution must receive and store messages until they can be processed. You create an Azure Service Bus instance by providing a name, pricing tier, subscription, resource group, and location. You need to complete the configuration. Which Azure CU or PowerShell command should you run?

A)

```
New-AzureRmServiceBusQueue
-ResourceGroupName fridge-rg
-NamespaceName fridge-ns
-Name fridge-q
-EnablePartitioning $False
```

B)

```
az group create
--name fridge-rg
--location fridge-loc
```

C)

```
New-AzureRmResourceGroup
-Name fridge-rg
-Location fridge-loc
```

D)

```
connectionString=$(az servicebus namespace authorization-rule keys list
--resource-group fridge-rg
--fridge-ns fridge-ns
--name RootManageSharedAccessKey
--query primaryConnectionString --output tsv)
```

- A. Option A
- B. Option B
- C. Option C
- D. Option D

Answer: D

NEW QUESTION 76

- (Exam Topic 5)

Note: This question is part of a series of questions that present the same scenario. Each question in the series contains a unique solution. Determine whether the solution meets the stated goals. You have the following resource groups:

Resource group	Comments
DevServer_WestCentralUS	<p>This resource group is located in the West Central US region and contains a single virtual machine named DevServer.</p> <p>DevServer is connected to a private subnet in an Azure Virtual Network that has no internet access.</p>
Workstation_EastUs	<p>This resource group is located in the East US region and contains a virtual machine named DevWorkstation.</p> <p>DevWorkstation is connected to a subnet in a Virtual Network and is configured with a public IP address. A network security group has been configured to allow public incoming remote desktop protocol (RDP) connections to the DevWorkstation.</p>

Developers must connect to DevServer only through DevWorkstation. To maintain security, DevServer must not accept connections from the internet. You need to create a private connection between the DevWokstation and DevServer. Solution: Configure a public IP address on DevServer_WestCentral. Configure the Network Security Group to allow all incoming ports. Does the solution meet the goal?

- A. Yes
- B. NO

Answer: A

NEW QUESTION 80

- (Exam Topic 5)

You are creating a collaborative image hosting platform as an ASP.NET MVC web application. Users add, update, and modify images on the platform. Images are stored in Azure Blob storage.

More than one user at a time must be able to modify the same image. You need to implement optimistic concurrency for uploading images.

Which four actions should you perform in sequence? To answer, move the appropriate actions from the list of actions to the answer area and arrange them in the correct order.

The screenshot shows a drag-and-drop interface. On the left, under the heading "Actions", there are five text boxes:

- Check response headers. If the status code equals 200, notify that it is a success. If the code is 412, notify the user about a conflicting change.
- When you upload the image, include the ETag in the If-None-Match conditional header of the PUT BLOB request.
- Store the ETag of the blob for further use, and let the user make the necessary modifications to the image.
- Retrieve an image blob from the storage service. The response includes an HTTP ETag Header value that identifies the current version of the image(Blob).
- When you upload the image, include the ETag in the If-Match conditional header of the PUT BLOB request.

On the right, there is an "Answer area" which is currently empty. Between the two areas are two circular arrows, one pointing right and one pointing left, indicating the sequence of actions.

A. Mastered

B. Not Mastered

Answer: A

Explanation:

The screenshot shows the same interface as before, but with the correct sequence of four actions highlighted in green in the "Actions" list and moved to the "Answer area" in the correct order:

- When you upload the image, include the ETag in the If-None-Match conditional header of the PUT BLOB request.
- Store the ETag of the blob for further use, and let the user make the necessary modifications to the image.
- When you upload the image, include the ETag in the If-Match conditional header of the PUT BLOB request.
- Check response headers. If the status code equals 200, notify that it is a success. If the code is 412, notify the user about a conflicting change.

The first three actions in the "Answer area" are circled in red, and the fourth action is also circled in red, indicating the correct sequence.

NEW QUESTION 82

- (Exam Topic 5)

You have an Azure subscription named Subscription1. Subscription1 contains the resources in the following table:

Name	Type
RG1	Resource group
RG2	Resource group
VNet1	Virtual network
VNet2	Virtual network

VNet1 is in RG1. VNet2 is in RG2. There is no connectivity between VNet1 and VNet2. An administrator named Admin1 creates an Azure virtual machine VM1 in RG1. VM1 uses a disk named Disk1 and connects to VNet1. Admin1 then installs a custom application in VM1.

You need to move the custom application to VNet2. The solution must minimize administrative effort. Which two actions should you perform? To answer, select the appropriate options in the answer area. NOTE: Each correct selection is worth one point.

First action:

	V
Create a network interface in RG2.	
Detach a network interface.	
Delete VM1.	
Move a network interface to RG2.	

Second action:

	V
Attach a network interface.	
Create a network interface in RG2.	
Create a new virtual machine.	
Move VM1 to RG2.	

- A. Mastered
- B. Not Mastered

Answer: A

Explanation:

First action:

	V
Create a network interface in RG2.	
Detach a network interface.	
Delete VM1.	
Move a network interface to RG2.	

Second action:

	V
Attach a network interface.	
Create a network interface in RG2.	
Create a new virtual machine.	
Move VM1 to RG2.	

NEW QUESTION 83

- (Exam Topic 5)

You have an Azure subscription named Subscription1 that contains a virtual network named VNet1. VNet1 is in a resource group named RG1. Subscription1 has a user named User1. User1 has the following roles:

- Reader
- Security Admin

Security Reader

You need to ensure that User1 can assign the Reader role for VNet1 to other users. What should you do?

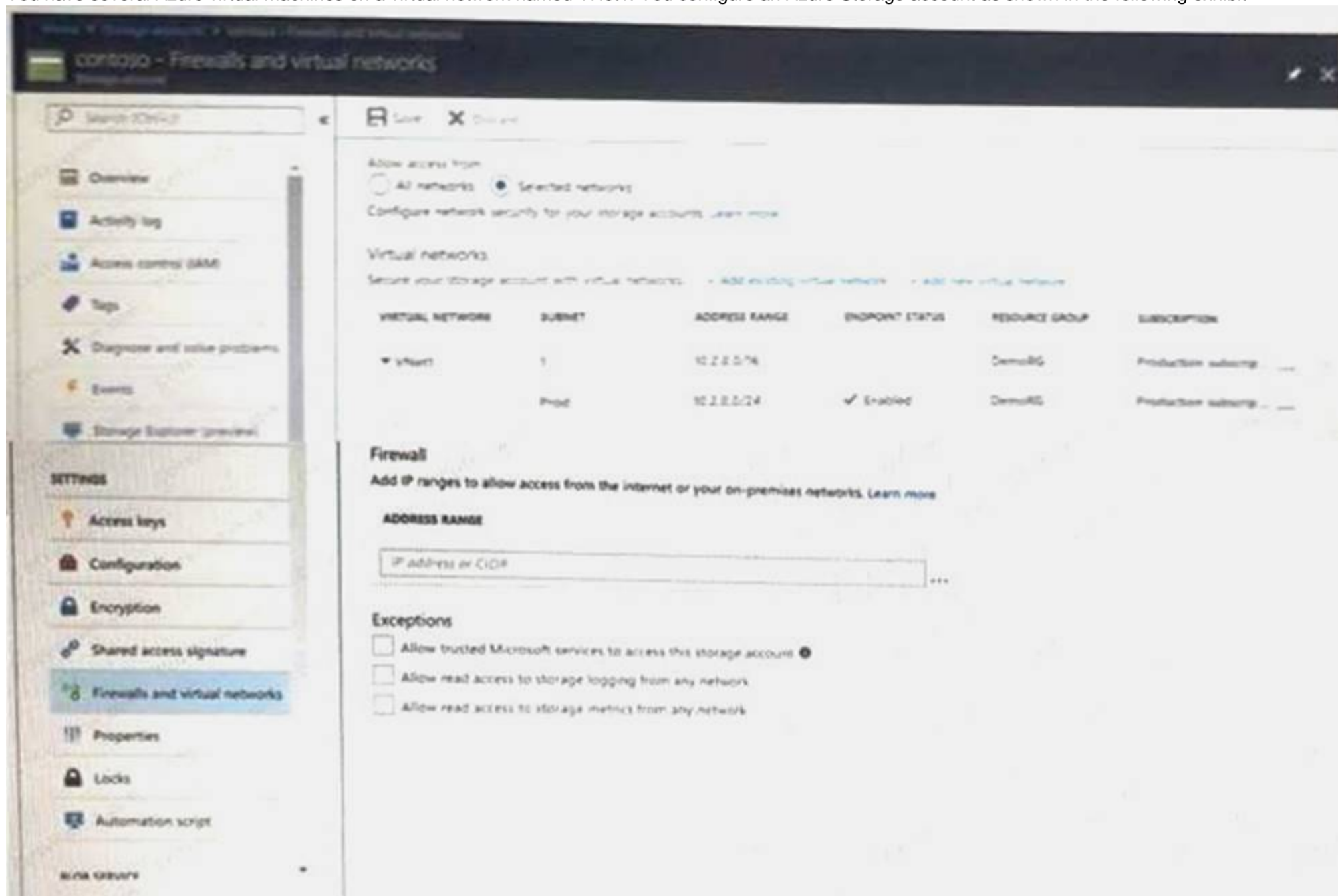
- A. Assign User1 the Owner role for VNet1.
- B. Assign User1 the Network Contributor role for VNet1.
- C. Remove User1 from the Security Reader and Reader roles for Subscription1. Assign User1 the Contributor role for Subscription1.
- D. Remove User1 from the Security Reader and Reader roles for Subscription1.

Answer: A

NEW QUESTION 88

- (Exam Topic 5)

You have several Azure virtual machines on a virtual network named VNet1. You configure an Azure Storage account as shown in the following exhibit



Use the drop-down menus to select the answer choice that completes each statement based on the information presented in the graphic. NOTE: Each correct selection is worth one point



- A. Mastered
- B. Not Mastered

Answer: A

Explanation:



NEW QUESTION 92

- (Exam Topic 5)

You set the multi-factor authentication status for a user named admin1@contoso.com to Enabled.

Admin1 accesses the Azure portal by using a web browser.

Which additional security verifications can Admin1 use when accessing the Azure portal?

- A. an app password, a text message that contains a verification code, and a verification code sent from the Microsoft Authenticator app
- B. a phone call, a text message that contains a verification code, and a notification or a verification code sent from the Microsoft Authenticator app
- C. a phone call, an email message that contains a verification code, and a text message that contains an app password
- D. an app password, a text message that contains a verification code, and a notification sent from the Microsoft Authenticator app

Answer: B

Explanation:

References:

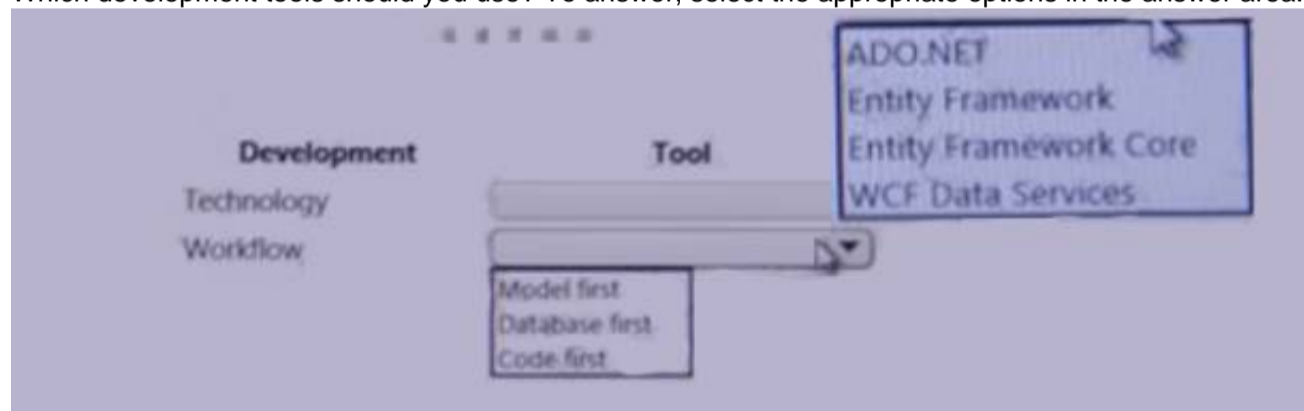
<https://docs.microsoft.com/en-us/azure/active-directory/authentication/concept-authentication-methods>

NEW QUESTION 93

- (Exam Topic 6)

You need to update the Inventory API.

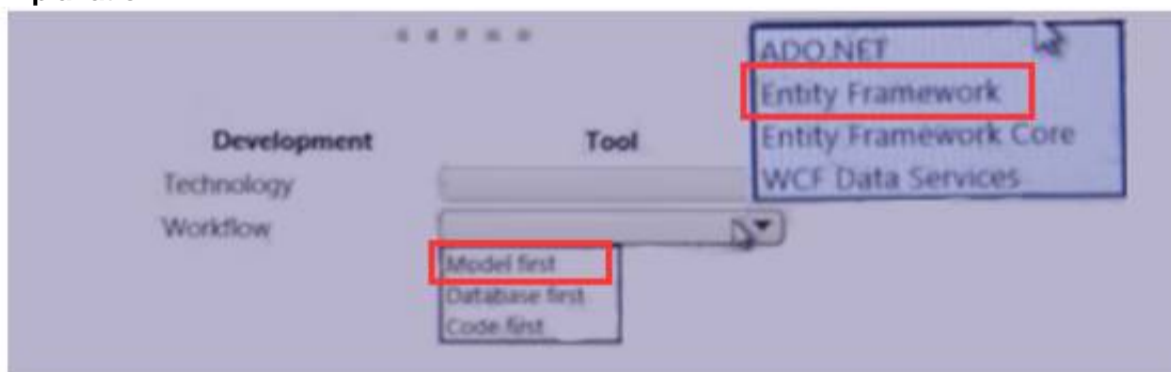
Which development tools should you use? To answer, select the appropriate options in the answer area. NOTE: Each correct selection is worth one point.



- A. Mastered
- B. Not Mastered

Answer: A

Explanation:



NEW QUESTION 98

- (Exam Topic 6)

You need to resolve the delivery API error. What should you do?

- A. Implement simple retry by using the EnableRetryOnFailure feature of Entity Framework.
- B. Implement exponential backoff by using the EnableRetryOnFailure feature of Entity Framework.
- C. Implement a Circuit Breaker pattern by using the EnableRetryOnFailure feature of Entity Framework.
- D. Invoke a custom execution strategy in Entity Framework.

Answer: B

Explanation:

References:

<https://docs.microsoft.com/en-us/azure/sql-database/sql-database-develop-error-messages>

NEW QUESTION 102

- (Exam Topic 6)

You need to implement the purchase requirement. What should you do?

- A. Use the Bot Framework REST API conversation operations to send the user's voice and the Speech Service API to recognize intents.
- B. Use the Direct Line REST API to send the user's voice and the Speech Service API to recognize intents.
- C. Use the Speech Service API to send the user's voice and the Bot Framework REST API conversation operations to recognize intents.
- D. Use the Bot Framework REST API attachment operations to send the user's voice and the Speech Service API to recognize intents.

Answer: A

NEW QUESTION 107

- (Exam Topic 6)

You need to meet the security requirements. What should you use?

- A. HTTP Strict Transport Security (HSTS)
- B. Direct Line API
- C. Multi-Factor Authentication (MFA)
- D. Bot Framework Portal
- E. Bot Framework authentication

Answer: E

NEW QUESTION 110

- (Exam Topic 6)

You need to meet the vendor notification requirement.

Solution: Create and apply a custom outbound Azure API Management policy. Does the solution meet the goal?

- A. Yes
- B. No

Answer: B

Explanation:

References:

<https://docs.microsoft.com/en-us/azure/api-management/api-management-howto-configure-notifications>

NEW QUESTION 112

.....

THANKS FOR TRYING THE DEMO OF OUR PRODUCT

Visit Our Site to Purchase the Full Set of Actual AZ-300 Exam Questions With Answers.

We Also Provide Practice Exam Software That Simulates Real Exam Environment And Has Many Self-Assessment Features. Order the AZ-300 Product From:

<https://www.2passeasy.com/dumps/AZ-300/>

Money Back Guarantee

AZ-300 Practice Exam Features:

- * AZ-300 Questions and Answers Updated Frequently
- * AZ-300 Practice Questions Verified by Expert Senior Certified Staff
- * AZ-300 Most Realistic Questions that Guarantee you a Pass on Your FirstTry
- * AZ-300 Practice Test Questions in Multiple Choice Formats and Updatesfor 1 Year