

## 300-175 Dumps

# DCUCI Implementing Cisco Data Center Unified Computing (DCUCI)

<https://www.certleader.com/300-175-dumps.html>



**NEW QUESTION 1**

- (Exam Topic 1)

Which two Cisco UCS firmware are contained in the Cisco UCS Infrastructure software bundle? (Choose two.)

- A. Cisco I/O module firmware
- B. Cisco UCS IMC
- C. Cisco UCS BIOS
- D. Cisco UCS fabric interconnects firmware
- E. Cisco UCS adapters

**Answer:** AD

**Explanation:**

for A, D: "A" BUNDLE

Infrastructure software bundle — This bundle is also called the A bundle. It contains the firmware images that the fabric interconnects, IO Modules, and Cisco UCS Manager require to function.

"B" BUNDLE

B-Series server software bundle — Also called the B bundle, this bundle contains the firmware images that the B-Series blade servers require to function, such as adapter, BIOS, CIMC, and board controller firmware. Release Bundle Contents for Cisco UCS Manager, Release 3.1 provides details about the contents of the B-Series server software bundle.

Reference:

[https://www.cisco.com/c/en/us/td/docs/unified\\_computing/ucs/ucs-manager/GUI-User-Guides/FirmwareMgmt/3b\\_UCSM\\_GUI\\_Firmware\\_Management\\_Guide\\_3\\_1\\_chapter\\_01.html](https://www.cisco.com/c/en/us/td/docs/unified_computing/ucs/ucs-manager/GUI-User-Guides/FirmwareMgmt/3b_UCSM_GUI_Firmware_Management_Guide_3_1_chapter_01.html)

**NEW QUESTION 2**

- (Exam Topic 1)

Which Cisco UCS blade server supports the highest I/O throughput?

- A. Cisco UCS B420 M3 Blade Server
- B. Cisco UCS B200 M3 Blade Server
- C. Cisco UCS B22 M3 Blade Server
- D. Cisco UCS B200 M4 Blade Server

**Answer:** A

**Explanation:**

B420 M4 = 160G I/O BW

[https://www.cisco.com/c/en/us/products/collateral/servers-unified-computing/ucs-b-series-blade-servers/data\\_sh](https://www.cisco.com/c/en/us/products/collateral/servers-unified-computing/ucs-b-series-blade-servers/data_sh)

[https://www.cisco.com/c/en/us/products/collateral/servers-unified-computing/ucs-b-series-blade-servers/data\\_sh](https://www.cisco.com/c/en/us/products/collateral/servers-unified-computing/ucs-b-series-blade-servers/data_sh)

[https://apps.cisco.com/ccw/cpc/guest/content/ucsModelDetails/model\\_b200m4](https://apps.cisco.com/ccw/cpc/guest/content/ucsModelDetails/model_b200m4) <https://www.cisco.com/c/en/us/products/collateral/servers-unified-computing/ucs-b200-m4-blade-server/datashe>

**NEW QUESTION 3**

- (Exam Topic 1)

Refer to the exhibit.

```
CISCO-A# scope org /
CISCO-A / org # create-maint-policy maint
CISCO-A / org/ maint-policy* # set reboot-policy user-ack
CISCO-A / org/ maint-policy* # set on-next-boot
CISCO-A / org/ maint-policy* # set soft-shutdown-timer 300-secs
CISCO-A / org/ maint-policy* # commit-buffer
CISCO-A / org/ maint-policy #
```

Which result of implementing the maintenance policy is true?

- A. The FSM applies the waiting changes when the host OS resets.
- B. The Cisco UCS server reboots as soon as the change is made to the service profile.
- C. The Cisco UCS server reboots at a scheduled time.
- D. The Cisco UCS server reboots 300 seconds after the policy is applied.

**Answer:** A

**NEW QUESTION 4**

- (Exam Topic 1)

You need to configure a Fibre Channel device alias named TEST for a device that is attached to port fc1./9 of a Cisco Nexus Series switch in a Cisco UCS system. Based on the output below, which command set should you use?

## SITEA-MDS-Fabric-A# show flogi database

INTERFACE	VSAN	FCID	PORT NAME	NODE NAME
fc1/5	100	0x6b0300	50:00:14:42:d0:0c:f5:00	50:00:14:40:47:b0:0c:f5
fc1/6	100	0x6b0100	50:00:14:42:d0:0c:f5:01	50:00:14:40:47:b0:0c:f5
fc1/7	50	0x550000	50:00:14:42:d0:0c:f5:20	50:00:14:40:47:a0:0c:f5
fc1/8	50	0x550100	50:00:14:42:d0:0c:f5:21	50:00:14:40:47:a0:0c:f5
fc1/9	50	0x550200	50:00:14:42:d0:0c:f5:20	50:00:14:40:47:b0:0c:f5
fc1/10	50	0x550300	50:00:14:42:d0:0c:f5:21	50:00:14:40:47:b0:0c:f5
fc1/11	100	0x6b0403	50:00:14:42:d0:0c:f5:00	20:64:54:7f:01:23:45:67

Total number of flogi = 7.

- A. SITE-A-MDS-Fabric-A# device-alias databaseSITE-A-MDS-Fabric-A (device-alias-db)# device-alias name TEST pwwn 50:00:14:40:47:b0:0c:f5SITE-A-MDS-Fabric-A (config-device-alias-db)# device-alias commit
- B. SITE-A-MDS-Fabric-A# configure terminalSITE-A-MDS-Fabric-A (config)# device-alias databaseSITE-A-MDS-Fabric-A (config-device-alias-db)# device-alias name TEST pwwn 50:00:14:42:d0:0c:f5:20SITE-A-MDS-Fabric-A (config-device-alias-db)# device-alias commit
- C. SITE-A-MDS-Fabric-A# configure terminalSITE-A-MDS-Fabric-A (config)# device-alias databaseSITE-A-MDS-Fabric-A (config-device-alias-db)# device-alias name TEST pwwn 50:00:14:40:47:b0:0c:f5SITE-A-MDS-Fabric-A (config-device-alias-db)# device-alias commit
- D. SITE-A-MDS-Fabric-A# configure terminalSITE-A-MDS-Fabric-A (config)# device-alias databaseSITE-A-MDS-Fabric-A (config-device-alias-db)# device-alias name TEST pwwn 50:00:14:42:d0:0c:f5:20SITE-A-MDS-Fabric-A (config-device-alias-db)# exit

**Answer:** A

### NEW QUESTION 5

- (Exam Topic 1)

You have a Cisco UCS system. You need to create VSAN 100 on 2 Cisco Nexus Series switch and to enable switch port fc1/10 as a member for the VLAN. Which command set should you use?

- A. SITE-A-MDS-Fabric-A# vsan databaseSITE-A-MDS-Fabric-A (vsan-db)# vsan 100 interface fc1/10 SITE-A-MDS-Fabric-A (vsan-db)# vsan database commit SITE-A-MDS-Fabric-A (vsan-db)# exit
- B. SITE-A-MDS-Fabric-A# configure terminal SITE-A-MDS-Fabric-A (config)# vsan databaseSITE-A-MDS-Fabric-A (config-vsan-db)# vsan 100 interface fc1/10 SITE-A-MDS-Fabric-A (config-vsan-db)# exit
- C. SITE-A-MDS-Fabric-A# configure terminal SITE-A-MDS-Fabric-A (config)# vsan databaseSITE-A-MDS-Fabric-A (config-vsan-db)# vsan 100 interface fc1/10 SITE-A-MDS-Fabric-A (config-vsan-db)# vsan database commit
- D. SITE-A-MDS-Fabric-A# configure terminal SITE-A-MDS-Fabric-A (config)# vsan databaseSITE-A-MDS-Fabric-A (config-vsan-db)# vsan 100 interface fc1/10 SITE-A-MDS-Fabric-A (config-vsan-db)# vsan database commit SITE-A-MDS-Fabric-A (config-vsan-db)# exit

**Answer:** B

### Explanation:

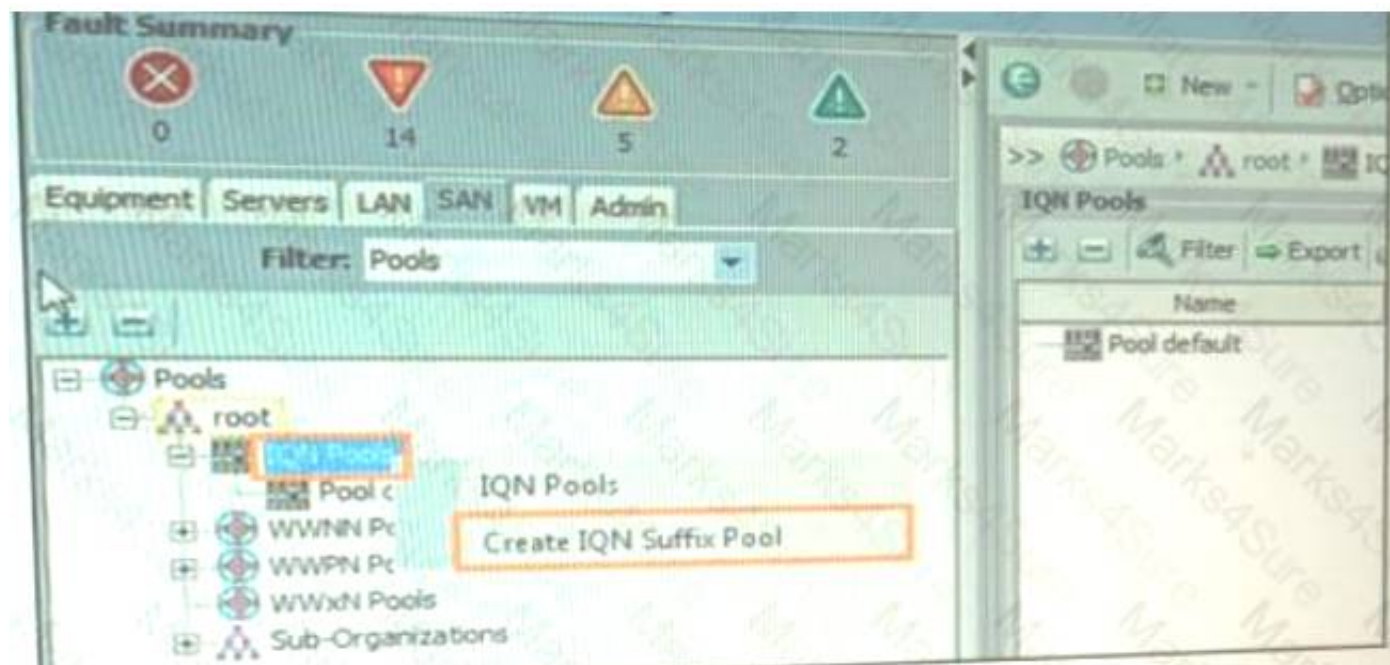
Reference:

[https://www.cisco.com/en/US/docs/storage/san\\_switches/mds9000/sw/san-os/quick/guide/qcg\\_vin.html](https://www.cisco.com/en/US/docs/storage/san_switches/mds9000/sw/san-os/quick/guide/qcg_vin.html)

### NEW QUESTION 6

- (Exam Topic 1)

Refer to the Exhibit.



Refer to the Exhibit. Which two components are needed to create an IQN suffix pool?

- A. description
- B. iSCSI vNIC



- C. prefix
- D. IQN block
- E. initiator IP address

**Answer:** BC

#### NEW QUESTION 7

- (Exam Topic 1)

At a customer site, a Cisco UCS cluster must be renamed due to a domain name change. You need to recommend a solution to ensure that Cisco UCS Manager can be accessed over HTTPS.

Which solution accomplishes this goal?

- A. The cluster must be reinstalled, in order to generate the default key ring certificate.
- B. A default key ring certificate regeneration request must be issued from Cisco UCS Manager.
- C. The default key ring certificate must be renewed automatically when the name changes.
- D. The default key ring certificate must be regenerated manually.

**Answer:** D

#### Explanation:

The cluster must be reinstalled, in order to generate the default key ring certificate. NOT CORRECT A default key ring certificate regeneration request must be issued from Cisco UCS Manager. NOT CORRECT (NOT AN OPTION THROUGH UCSM)

The default key ring certificate must be renewed automatically when the name changes. NOT CORRECT (NOT AUTOMATIC. MUST BE DONE THROUGH CLI)

The default key ring certificate must be regenerated manually. CORRECT

[https://www.cisco.com/c/en/us/td/docs/unified\\_computing/ucs/sw/cli/config/guide/2-0/b\\_UCSM\\_CLI\\_Configur](https://www.cisco.com/c/en/us/td/docs/unified_computing/ucs/sw/cli/config/guide/2-0/b_UCSM_CLI_Configur) The default key ring certificate must be manually regenerated if the cluster name changes or the certificate expires.

#### NEW QUESTION 8

- (Exam Topic 1)

You have a server that has a Cisco UCS CAN. A service profile that has a vNIC and a vHBA is mapped to fabric A. The vNIC is configured to use VLAN 10. VLAN 10 is the native VLAN for the vNIC. The vHBA is configured to use VSAN 2. Which description of the configuration is true?

- A. VSAN 2 can be configured by using VLAN 10 as the FCoE VLAN ID.
- B. VSAN 2 can read traffic on VLAN 5.
- C. VLAN 10 and VSAN 2 must use the same ID.
- D. VSAN 2 can be mapped to their VLANs in fabric A.

**Answer:** A

#### NEW QUESTION 9

- (Exam Topic 1)

When configuring roles in the Cisco UCS C-Series, which role should be assigned for a person who must be allowed to power on the server and install a hypervisor using virtual media, but not allowed to configure other Cisco Integrated Management Controller settings?

- A. VM admin
- B. user
- C. admin
- D. read-only

**Answer:** B

#### NEW QUESTION 10

- (Exam Topic 1)

Which two statements about service profile configuration options in the Cisco UCS Manager GUI are true? (Choose two.)

- A. It can be configured by using the chassis connectivity policy.
- B. It can be derived from the chassis discovery policy.
- C. It can be generated automatically from the service profile template.
- D. It can be configured by cloning a virtual machine profile.
- E. It can be derived from the initial template or the updating template.

**Answer:** AB

#### NEW QUESTION 10

- (Exam Topic 1)

You must implement a Dynamic FCoE topology that uses ECMP. Which ancillary technology do you use?

- A. OTV
- B. VXLAN
- C. FabricPath
- D. EIGRP

**Answer:** C

#### NEW QUESTION 13

- (Exam Topic 1)

Which component is unsupported by the UEFI boot device in the Cisco UCS C-series standalone?

- A. PCI SSD
- B. FCoE
- C. FlexFlash card
- D. USB

**Answer:** A

#### NEW QUESTION 17

- (Exam Topic 1)

Which consideration must be made while performing backup operations within the Cisco UCS Manager?

- A. Rerunning an existing backup operation overwrites the existing backup file.
- B. Scheduled backups are not available.
- C. A user can perform incremental backups of a system configuration.
- D. Each backup destination can have multiple backup operations.

**Answer:** A

#### NEW QUESTION 19

- (Exam Topic 1)

You need to install Cisco UCS Central Software at a customer site and set it up to manage Cisco UCS Manager.

What should you do to accomplish this goal?

- A. Register the Cisco UCS domains in Cisco UCS Central Software.
- B. Register the same Cisco UCS equipment that is managed by Cisco UCS Manager, and Cisco UCS Manager itself, in Cisco UCS Central Software.
- C. Register Cisco UCS Manager in Cisco UCS Central Software.
- D. Register Cisco UCS Central Software in Cisco UCS Manager.

**Answer:** A

#### NEW QUESTION 21

- (Exam Topic 1)

ACisco UCS Administrator is planning to complete a firmware upgrade using Auto install. Which two optionsare prerequisites to run Auto Install? (Choose two.)

- A. Minor fault fixing
- B. Configuration backup
- C. Service profiles unmounted from the blade servers
- D. Time synchronization
- E. Fault suppression started on the blade servers

**Answer:** BD

#### Explanation:

Reference:

[https://www.cisco.com/c/en/us/td/docs/unified\\_computing/ucs/sw/firmware-mgmt/gui/2-2/b\\_GUI\\_Firmware\\_M](https://www.cisco.com/c/en/us/td/docs/unified_computing/ucs/sw/firmware-mgmt/gui/2-2/b_GUI_Firmware_M)

#### NEW QUESTION 22

- (Exam Topic 1)

Which set of statements about the deployment options for Cisco UCS Central Software is true?

- A. Cisco UCS Central Software can be installed in a physical or a hypervisor environmen
- B. Only VMware and KVM hypervisor environments are supported.
- C. Cisco UCS Central Software can he installed in a physical or a hypervisor environmen
- D. VMware, Microsoft Hyper-V, and KVM hypervisor environments are supported.
- E. Cisco UCS Central Software can be installed only in a physical environment, due to extreme I/O and networking needs.
- F. Cisco UCS Central Software can be installed only in a VMware and Microsoft Hyper-V virtual environment.

**Answer:** A

#### Explanation:

UCS Central can only be installed in a hypervisor, but may be installed in VMW are ESXi, Hyper-V, and KVM.

This isn't an option Reference:

[https://www.cisco.com/c/en/us/td/docs/unified\\_computing/ucs/ucs-central/install-upgrade/1-3/b\\_Cisco\\_UCSC\\_I](https://www.cisco.com/c/en/us/td/docs/unified_computing/ucs/ucs-central/install-upgrade/1-3/b_Cisco_UCSC_I)

#### NEW QUESTION 23

- (Exam Topic 1)

ACisco UCS Administrator is planning to complete a firmware upgrade using Auto install. Which two options are prerequisites to run Auto install? (Choose two.)

- A. minor fault fixing
- B. configuration backup
- C. service profiles unmounted from the blade servers
- D. time synchronization
- E. fault suppression started on the blade servers

**Answer:** AB

#### NEW QUESTION 24

- (Exam Topic 1)

Drag the characteristic on the left to the most appropriate Cisco Unified Computing System 62XX Fibre Channel switching mode on the right.

NP\_Port to F\_Port

No Fibre Channel domain ID

Default zoning or zone merge

No zoning required

N\_Port to F\_Port

Fibre Channel domain ID

NPV Mode

Fibre Channel Switching Mode

- A. Mastered  
B. Not Mastered

Answer: A

Explanation:

Drag the characteristic on the left to the most appropriate Cisco Unified Computing System 62XX Fibre Channel switching mode on the right.

NP\_Port to F\_Port

No Fibre Channel domain ID

Default zoning or zone merge

No zoning required

N\_Port to F\_Port

Fibre Channel domain ID

NPV Mode

NP\_Port to F\_Port

No Fibre Channel domain ID

No zoning required

Fibre Channel Switching Mode

N\_Port to F\_Port

Fibre Channel domain ID

Default zoning or zone merge

**NEW QUESTION 28**

- (Exam Topic 1)

A network administrator has configured all required settings for the Smart Call Home feature in Cisco UCS. What must be done next?

- A. Open a TAC case to verify contract information and start the registration process.  
B. Generate a fault to initiate a message that will start the registration process.  
C. The system automatically starts the registration process and no further action is required.  
D. Send a system inventory message to start the registration process.

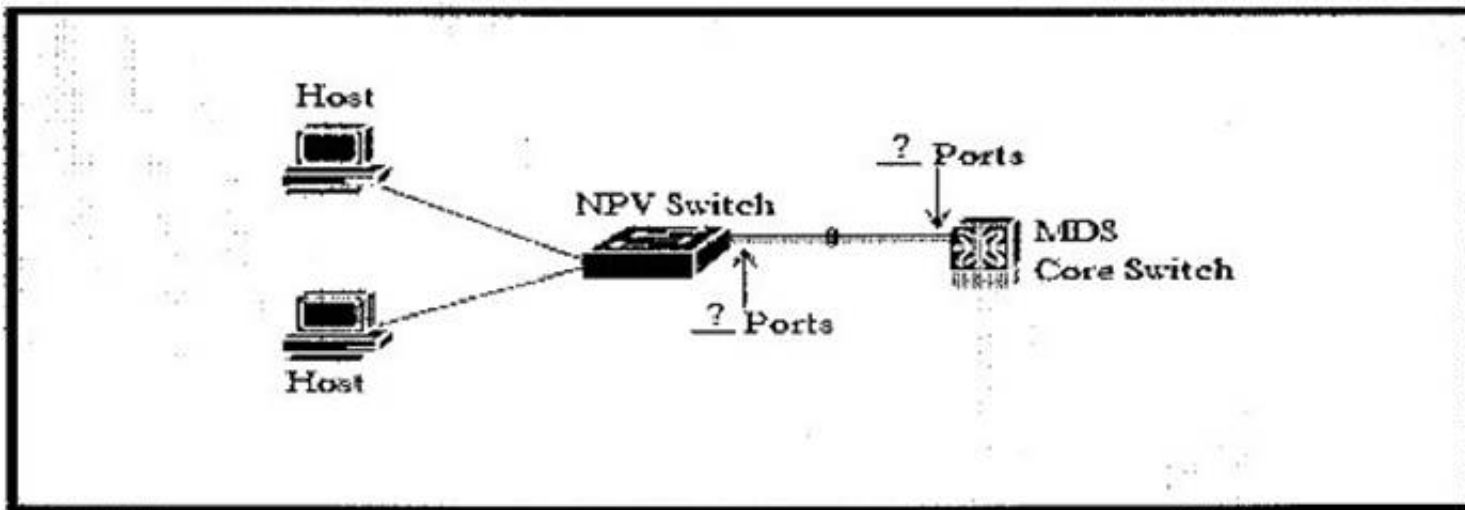
Answer: D

**NEW QUESTION 32**

- (Exam Topic 1)

View the Exhibit.





Refer to the exhibit. An engineer is implementing a new network design that includes a port channel to connect an MDS core switch and an NPV switch. Which two Fibre Channel port types must be used to create the Fibre Channel port channel? (Choose two.)

- A. F Port
- B. NP Port
- C. NL Port
- D. E Port
- E. N Port
- F. TL Port

**Answer:** AB

**Explanation:**

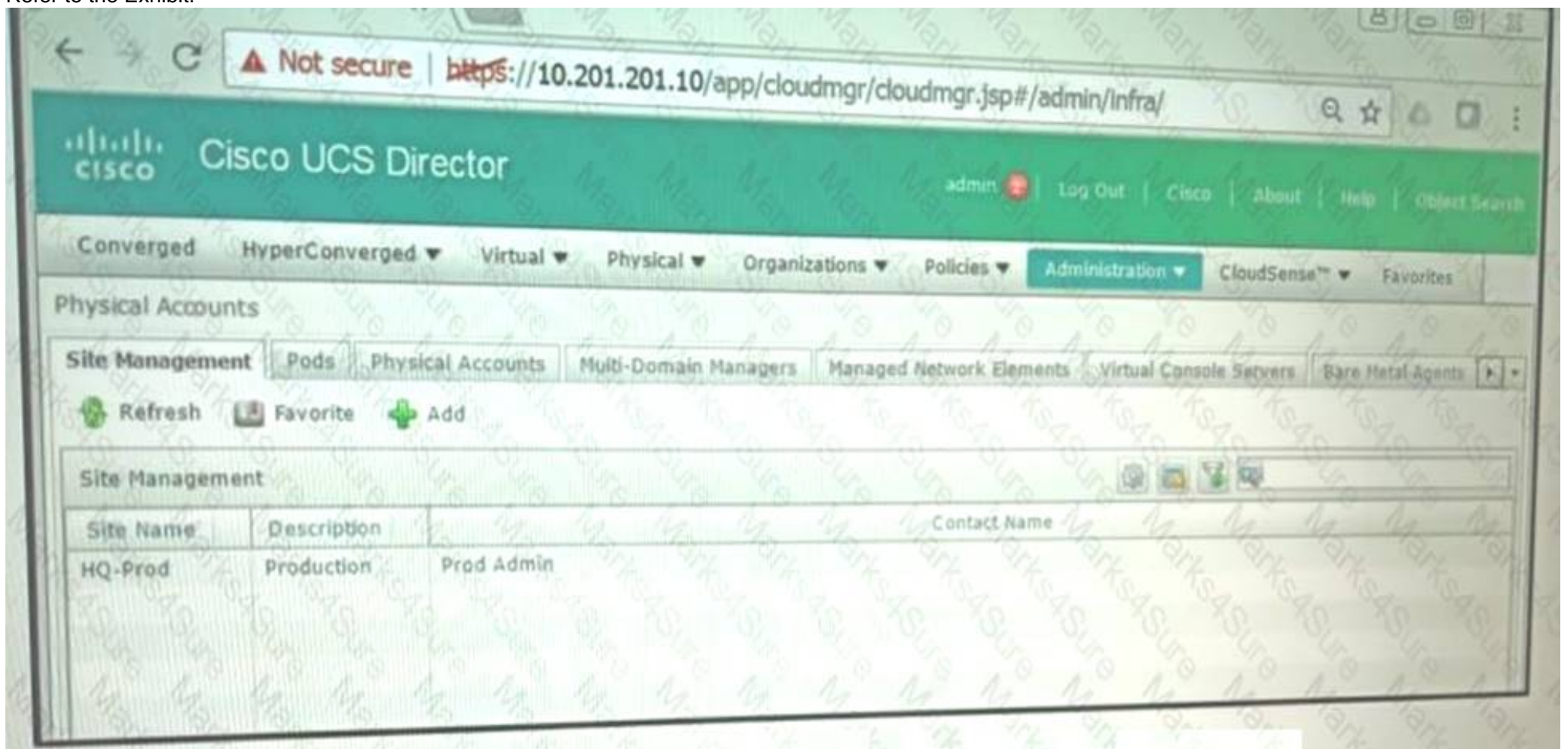
Reference:

[https://www.cisco.com/c/en/us/td/docs/switches/datacenter/mds9000/sw/4\\_1/configuration/guides/cli\\_4\\_1/clibo](https://www.cisco.com/c/en/us/td/docs/switches/datacenter/mds9000/sw/4_1/configuration/guides/cli_4_1/clibo)

### NEW QUESTION 36

- (Exam Topic 1)

Refer to the Exhibit:



You are integrating Cisco UCS Director with the ACI fabric. Where do you create the account type?

- A. Pods
- B. Managed Network Elements
- C. Multi-Domain Managers
- D. Bare Metal Agents

**Answer:** C

### NEW QUESTION 37

- (Exam Topic 1)

An administrator is testing the Cisco Nexus 1000v switch on top of a Cisco UCS Blade. They realize that the test VM traffic is not marked correctly after it leaves the Cisco UCS B-series blade. What is the reason for seeing this behavior?

- A. The Cisco UCS does not support QoS marking
- B. The Cisco UCS QoS policy applied to the blade has the host control set to "none."
- C. The Cisco Nexus 1000V Series Switches do not support QoS marking.
- D. The Cisco Nexus 1000V Series Switch QoS marking has not been enabled with "feature qos."

**Answer:** B

**Explanation:**

Whether UCS controls the CoS for a vNIC or not strictly depends on the Host Control Field of the QoS Policy, which is assigned to that particular vNIC.

If None is selected, then UCS assigns the CoS value associated with the Priority Class given in the QoS policy. It disregards any of the settings implemented at the host level by the Nexus 1000v.

If Full is selected and the packet has a valid CoS assigned by the Nexus 1000v, then UCS trusts the CoS settings assigned at the host level. Otherwise, Cisco UCS uses the CoS value associated with the priority selected in the Priority drop-down list.

The Milano QoS policy has a Host Control of Full, which means that the Gold Priority (CoS 6) is ignored and the Nexus 1000v setting is trusted.

The correct answer is "The Cisco UCS QoS policy applied to the blade has the host control set to "none." The other answers are not correct, or are not causes for the behavior.

Reference:

<https://www.cisco.com/c/en/us/support/docs/switches/nexus-1000v-switch/117541-configure-qos-00.html#anc6>

**NEW QUESTION 42**

- (Exam Topic 1)

Which addressing does Cisco UCS Manager use when communicating with Cisco UCS Central?

- A. IP addresses of the UCS Fabric Interconnects
- B. UCS CIMC
- C. VMware ESXi server
- D. IP address of the UCS KVM

**Answer:** A

**NEW QUESTION 43**

- (Exam Topic 1)

Which of the following are true concerning authentication within a Cisco Unified Computing System?

- A. Authentication domains are used to leverage individual authentication systems.
- B. You can create up to 64 authentication domains, each associated with a provider group and realm in Cisco Unified Computing System Manager.
- C. Cisco Unified Computing System supports LDAP or RADIUS for remote authentication.
- D. A locally authenticated user account is authenticated directly through the fabric interconnect.

**Answer:** D

**Explanation:**

Reference:

[https://www.cisco.com/c/en/us/td/docs/unified\\_computing/ucs/sw/gui/config/guide/2-0/b\\_UCSM\\_GUI\\_Configu](https://www.cisco.com/c/en/us/td/docs/unified_computing/ucs/sw/gui/config/guide/2-0/b_UCSM_GUI_Configu)

**NEW QUESTION 46**

- (Exam Topic 1)

Which item describes the failure scenario called a "split-brain" in the Cisco Unified Computing System?

- A. Failure of the Cisco Unified Computing System L1-L2 network
- B. Failure of a Cisco Unified Computing System Chassis Management Controller
- C. Failure of a Cisco Unified Computing System I/O module
- D. Failure of a Cisco Unified Computing System Fabric Interconnect
- E. Failure of a Cisco Unified Computing System Chassis Management Switch

**Answer:** A

**NEW QUESTION 49**

- (Exam Topic 1)

Which statement is true regarding backup operations in Cisco UCS Manager?

- A. A user can perform incremental backups of a system configuration.
- B. Passwords and other sensitive information are encrypted in full state backups.
- C. Scheduled backups are not available.
- D. Each backup destination can have multiple backup operations.

**Answer:** B

**NEW QUESTION 53**

- (Exam Topic 1)

You need to configure storage switch-based Fibre Channel zoning in a Cisco UCS system. The zoning must be configured in VSAN 100. What should you do?

- A. Disable zoning on VSAN 100 in Cisco UCS Manage
- B. Configure zoning on the upstream SAN switch on VSAN 100.
- C. Disable zoning on VSAN 100 in Cisco UCS Manage
- D. Set Cisco UCS Manager to interoperability mod
- E. Create VSAN 100 in Cisco UCS Manage
- F. Configure zoning on the upstream third-party SAN switch.
- G. Register the SAN switch manually in Cisco UCS Manage
- H. Enable switch-based zoning on VSAN 100 in Cisco UCS Manager.
- I. Discover the SAN switch in Cisco UCS Manage



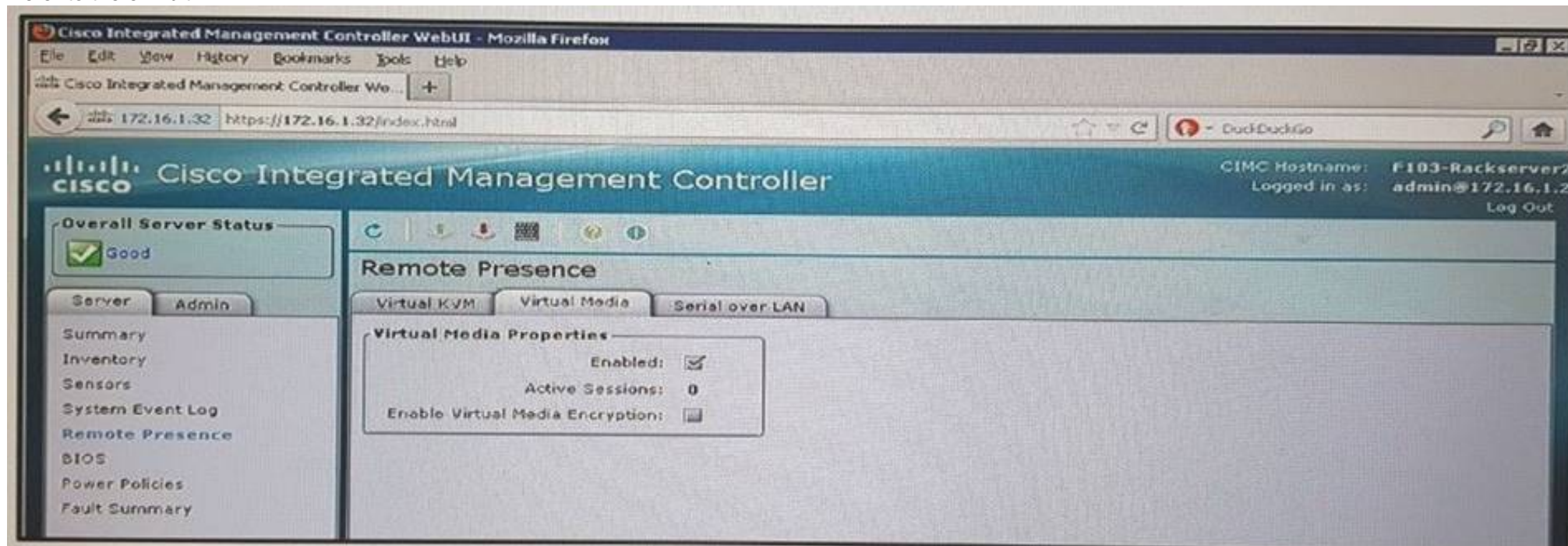
J. Enable inherited zoning on VSAN 100 in Cisco UCS Manager.

**Answer:** A

#### NEW QUESTION 54

- (Exam Topic 1)

Refer to the exhibit.



Which two media types can you mount from the KVM console? (Choose two.)

- A. ISO
- B. VHD
- C. VHDx
- D. IMG
- E. VMDK

**Answer:** AD

#### NEW QUESTION 56

- (Exam Topic 1)

You are creating service profiles for a Cisco UCS system by using the service profile wizard. You discover that you forgot to create the UUID pool. What should you do?

- A. From the wizard, click Create UUID Suffix Pool.
- B. Pause the running wizard, and then start a temporary wizard to create a profile with the same name and the missing UUID pool
- C. Resume the wizard, and then select the new UUID pool.
- D. Continue running the wizard
- E. The service profile uses the burned-in UUID in the BIOS of the server.
- F. Stop the wizard, and then restart the wizard.

**Answer:** A

#### Explanation:

Step 4

(Optional) If you want to create a new UUID Suffix pool to use in this service profile, click Create UUID Suffix Pool and complete the fields in the Create UUID Suffix Pool wizard. For more information, see Creating a UUID Suffix Pool.

Reference:

[https://www.cisco.com/en/US/docs/unified\\_computing/ucs/sw/gui/config/guide/141/UCSM\\_GUI\\_Configuration\\_Guide\\_141\\_chapter24.html](https://www.cisco.com/en/US/docs/unified_computing/ucs/sw/gui/config/guide/141/UCSM_GUI_Configuration_Guide_141_chapter24.html)

#### NEW QUESTION 57

- (Exam Topic 1)

An administrator is required to configure a policy in Cisco UCS to schedule backups. Which two backup types can be scheduled? (Choose two.)

- A. full state
- B. import configuration
- C. logical configuration
- D. system configuration
- E. all configuration

**Answer:** AE

#### Explanation:

You can configure policies in Cisco UCS to schedule the following types of backups: Full state

All configuration

You cannot schedule any other type of backup. Full State Backup Policy

All Configuration Export Policy Reference:

[https://www.cisco.com/c/en/us/td/docs/unified\\_computing/ucs/sw/gui/config/guide/2-1/b\\_UCSM\\_GUI\\_Configu](https://www.cisco.com/c/en/us/td/docs/unified_computing/ucs/sw/gui/config/guide/2-1/b_UCSM_GUI_Configu)

#### NEW QUESTION 62

- (Exam Topic 1)  
Refer to the exhibit.

```
cisco# scope cimc
cisco /cimc # scope network
cisco /cimc/network #set mode dedicated
cisco /cimc/network *# commit
cisco /cimc/network #
```

Which port is used for communication between the server and the Cisco Integrated management Controller?

- A. port on the adapter card
- B. management Ethernet port
- C. LAN on the motherboard port
- D. fabric uplink port

**Answer:** B

**Explanation:**

Reference:

[https://www.cisco.com/c/en/us/td/docs/unified\\_computing/ucs/c/sw/gui/config/guide/1-2-1/b\\_Cisco\\_UCS\\_C-Se](https://www.cisco.com/c/en/us/td/docs/unified_computing/ucs/c/sw/gui/config/guide/1-2-1/b_Cisco_UCS_C-Se)

**NEW QUESTION 67**

- (Exam Topic 1)

You need to provision iSCSI initiator IP pools on a Cisco UCS system. How many iSCSIVNICs can you use per boot policy?

- A. 2
- B. 4
- C. 6
- D. 8

**Answer:** A

**Explanation:**

You can add up to two iSCSIVNICs per boot policy. One vNIC acts as the primary iSCSI boot source, and the other acts as the secondary iSCSI boot source.

Reference:

[https://www.cisco.com/c/en/us/td/docs/unified\\_computing/ucs/sw/gui/config/guide/2-2/b\\_UCSM\\_GUI\\_Configu](https://www.cisco.com/c/en/us/td/docs/unified_computing/ucs/sw/gui/config/guide/2-2/b_UCSM_GUI_Configu)

**NEW QUESTION 71**

- (Exam Topic 1)

You are configuring HTTPS access to Cisco UCS Manager. You create a key ring, you issue a certificate request for the key ring, and you create the certificate request for the key ring. You discover that you still receive untrusted connection messages when connecting to Cisco UCS Manager from a Firefox browser and a Google Chrome browser.

What should you do to resolve the issue?

- A. Create a trusted point.
- B. Obtain a validated certificate from Cisco.
- C. Use only the Microsoft Internet Explorer browser.
- D. Sign the certificate by using Cisco UCS Manager.

**Answer:** D

**Explanation:**

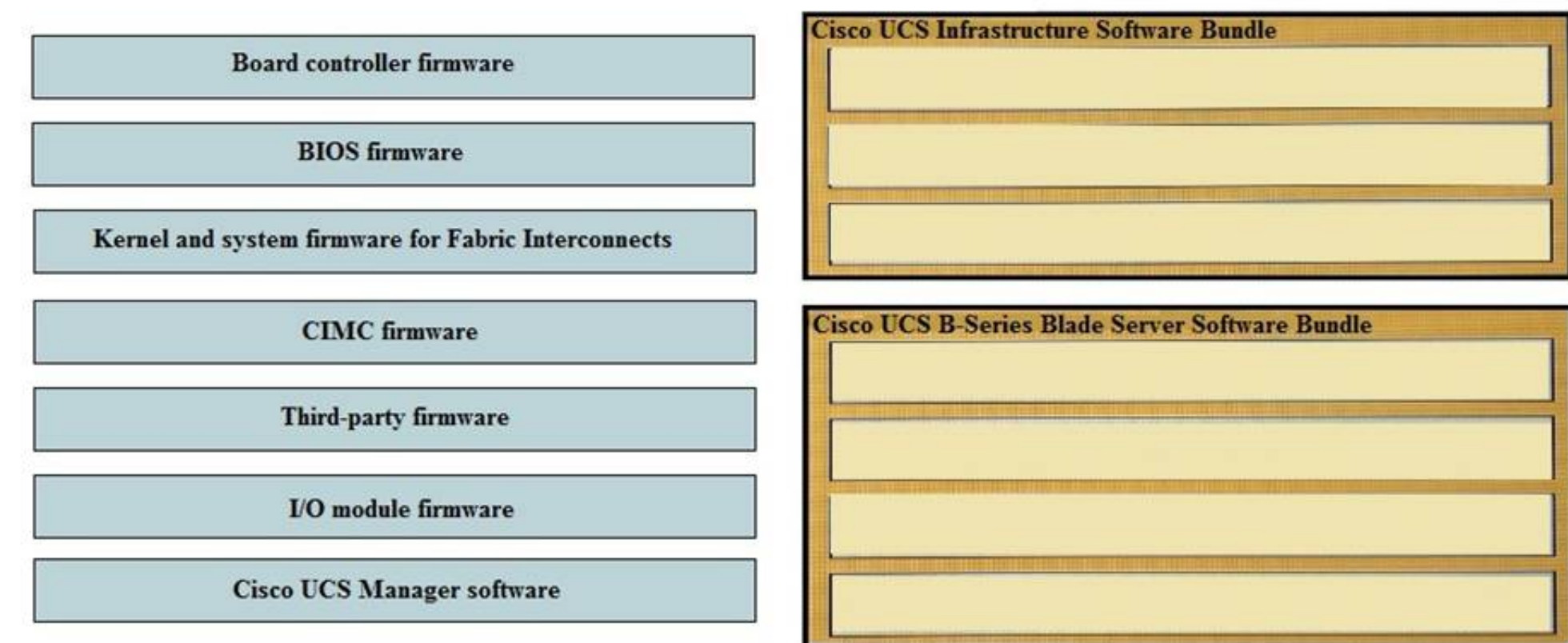
Reference:

<https://www.derekseaman.com/2012/04/install-trusted-ssl-certificate-in.html>

**NEW QUESTION 74**

- (Exam Topic 1)

You need to upgrade the firmware on a Cisco UCS B-Series Blade Server system. Drag and drop the firmware packages on the left to the appropriate software bundle types on the right.



- A. Mastered
- B. Not Mastered

**Answer:** A

**Explanation:**

Cisco UCS Infrastructure Software Bundle  
I/O module firmware  
Kernel and system firmware for Fabric Interconnects  
Cisco UCS Manager firmware  
Cisco UCS B-series Blade Server Software Bundle  
Board controller firmware  
BIOS firmware CIMC firmware Third-party firmware

**NEW QUESTION 77**

- (Exam Topic 1)

You need to identify which DCB standard provides those functionalities negotiation capabilities for features, the distribution of parameters from one node to another, and logical link up and down signaling for both Ethernet and fibre Channel interfaces. Which DCB standard should you identify?

- A. ETS
- B. PFC
- C. DCBX
- D. QCN

**Answer:** C

**Explanation:**

Reference:  
<https://www.cisco.com/c/dam/en/us/solutions/collateral/data-center-virtualization/ieee-802-1-data-centerbridgin>  
<https://www.cisco.com/c/dam/en/us/products/collateral/storage-networking/mds-9700-series-multilayerdirectors>

**NEW QUESTION 82**

- (Exam Topic 1)

You are configuring a Cisco UCS port channel. Drag and drop the description from the left onto the correct port channel types on the right.



carries traffic over an Ethernet port channel

can be set to admin speeds of Auto, 4Gbps, 8Gbps, or 16Gbps

requires that channel mode is set to active on an upstream NPIV switch

uses a VFC that is created internally by Cisco UCS Manager

Fibre Channel Port Channel

FCoE Port Channel

- A. Mastered  
B. Not Mastered

**Answer:** A

**Explanation:**

carries traffic over an Ethernet port channel

can be set to admin speeds of Auto, 4Gbps, 8Gbps, or 16Gbps

requires that channel mode is set to active on an upstream NPIV switch

uses a VFC that is created internally by Cisco UCS Manager

Fibre Channel Port Channel

can be set to admin speeds of Auto, 4Gbps, 8Gbps, or 16Gbps

requires that channel mode is set to active on an upstream NPIV switch

FCoE Port Channel

carries traffic over an Ethernet port channel

uses a VFC that is created internally by Cisco UCS Manager

#### NEW QUESTION 85

- (Exam Topic 1)

Which Cisco UCS backup type results in an XML file that includes all system and logical configuration settings?

- A. system configuration  
B. all configuration  
C. full state  
D. logical configuration

**Answer:** B

**NEW QUESTION 88**

- (Exam Topic 1)

You must define a workload using Cisco UCS Manager. Drag and drop the workload definition tasks from the left into the correct order on the right.

Configure a server policy.	step 1
Configure a service profile template.	step 2
Configure the adapters.	step 3
Define an organizational hierarchy.	step 4
Define the pools.	step 5

- A. Mastered
- B. Not Mastered

**Answer:** A

**Explanation:**

Define organizational hierarchy Define Pools  
Configure Adapters  
Configure Service Profile Templates Configure Server Policies

**NEW QUESTION 90**

- (Exam Topic 1)

In order to manually boot from the FlexFlash SD card, which boot option must be in the boot policy used in the service profile?

- A. FlexFlash state
- B. remote virtual drive
- C. remote boot
- D. SD card

**Answer:** D

**NEW QUESTION 94**

- (Exam Topic 2)

How many certificates does Cisco Unified Computing System Manager have to export to communicate with VMware vCenter server if the VMware ESXi hosts are all running version 5.0 or higher?

- A. 1
- B. 2
- C. 4
- D. 8
- E. 16

**Answer:** A

**NEW QUESTION 96**

- (Exam Topic 2)

Which protocol is not supported for Cisco UCS backups and imports?

- A. FTP
- B. TFTP
- C. SCP
- D. SFTP
- E. HTTP

**Answer:** E

**NEW QUESTION 97**

- (Exam Topic 2)

Which ports can access the Cisco IMC if you select Shared LOM NIC mode in the Cisco IMC Configuration Utility for a Cisco UCS C-Series server?

- A. the ports on an installed Cisco network adapter card
- B. the two 1-Gb Ethernet ports
- C. the two 10/100 management ports
- D. the two 10/100 management ports, but each port has a default setting

**Answer:** B



**NEW QUESTION 102**

- (Exam Topic 2)

Which option describes what Cisco Integrated Management Controller Network Security provides?

- A. protection against DDoS on the Cisco IMC
- B. a whitelist that specifies the servers allowed to access the Cisco IMC
- C. 802.1x support, allowing the Cisco IMC to log in to a port security network
- D. user-configured ACLs to block known bad servers from accessing the Cisco IMC

**Answer:** A

**NEW QUESTION 103**

- (Exam Topic 2)

This question concerns the replacement of a copper twinax SFP+ transceiver with an optical SFP+ transceiver on a Cisco Unified Computing System blade server.

Drag the options on the left to the right side in the correct order when performing the replacement. Note: Not all of the options on the left will be used.

Insert the optical SFP+ transceiver into the I/O module port	
Remove the Cisco Unified Computing System 21xx I/O module from the chassis	
Remove the SFP+ cable, leaving the I/O module port empty	
Pull gently on the rubber loop of the copper twinax SFP+ from the I/O module port	
Plug the fiber-optic cable into the optical SFP+ transceiver	

- A. Mastered
- B. Not Mastered

**Answer:** A

**Explanation:**

This question concerns the replacement of a copper twinax SFP+ transceiver with an optical SFP+ transceiver on a Cisco Unified Computing System blade server.

Drag the options on the left to the right side in the correct order when performing the replacement. Note: Not all of the options on the left will be used.

Insert the optical SFP+ transceiver into the I/O module port	Pull gently on the rubber loop of the copper twinax SFP+ from the I/O module port
Remove the Cisco Unified Computing System 21xx I/O module from the chassis	Insert the optical SFP+ transceiver into the I/O module port
Remove the SFP+ cable, leaving the I/O module port empty	Plug the fiber-optic cable into the optical SFP+ transceiver
Pull gently on the rubber loop of the copper twinax SFP+ from the I/O module port	
Plug the fiber-optic cable into the optical SFP+ transceiver	

**NEW QUESTION 106**

- (Exam Topic 2)



Instructions

Open the windows by clicking on the minimized title at the bottom of the viewing area. Windows can be minimized by clicking on the [X], repositioned by dragging the title bar, and resized by using the handle at the lower right corner to customize the viewing area.

If you are required to access the devices to complete this scenario, the mouse cursor will use a hand symbol when moved over device icons. Clicking the icon will open a device terminal so you can interact with the hardware.

Open the Questions window and begin by clicking a question number. When you have completed answering all questions, click Done to continue.

Scenario

Use your UCS knowledge on Adapter errors using the cli, answer the questions associated with the configurations.

Exhibit1

```

UCS-A# scope server 1/5
UCS-A /chassis/server # show adapter detail

Adapter:
  Id: 2
  Product Name: Cisco UCS 82590KR-CI
  PID: N20-AI0002
  VID: V01
  Vendor: Cisco Systems Inc
  Serial: QCI132300CC
  Revision: 0
  Mfg Date: 2009-06-13T00:00:00.000
  Slot: N/A
  Overall Status: Operable
  Conn Path: A,B
  Conn Status: Unknown
  Managing Instance: B
  Product Description: PCI Express Dual Port 10 Gigabit Ethernet Server Adapter
UCS-A /chassis/server #
    
```

Questions

1

We are working on which server?

2

☐ 1

3

☐ 2

4

☐ 3

☐ 4

☐ 5

- A. Mastered
- B. Not Mastered

Answer: A

Explanation:  
5

NEW QUESTION 110

- (Exam Topic 2)

In the Create Dynamic vNIC Connection Policy dialog box, there is a configurable field titled Protection. What is the significance of the three choices for Protection?

- A. allows reserve vNICs to be allocated out of the spares pool
- B. enables hardware-based failover
- C. enables static binding of the VM port profile to dynamic vNICs
- D. selects the primary fabric association for dynamic vNICs
- E. allows dynamic vNICs to be reserved for fabric failover

Answer: D

NEW QUESTION 111

- (Exam Topic 2)

Which BIOS setting is required for a VMware ESXi 5.0 host to support Cisco VM-FEX universal passthrough mode?

- A. VT for Directed IO
- B. ACPI 10 Support
- C. VEMDPA Agent
- D. Execute Disabled Bit
- E. Processor C State

Answer: A

**NEW QUESTION 116**

- (Exam Topic 2)

Which VMware ESXi 5.0 CLI command will validate PassThru interfaces when they are available?

- A. vem status -v
- B. vempassthru-v
- C. vemintf -v
- D. vemifconfig -v
- E. vempts -v

Answer: A

**NEW QUESTION 121**

- (Exam Topic 2)

Which two policies can be configured in a port profile for VM-FEX high-performance mode? (Choose two.)

- A. QoS policy
- B. network control policy
- C. adapter policy
- D. BIOS policy
- E. vNIC connection policy

Answer: AC

**NEW QUESTION 123**

- (Exam Topic 2)

Which of the following is true with respect to hardware failover or NIC teaming within a Cisco Unified Computing System?

- A. Hardware failover is specified by the operating system.
- B. An uplink failure when using automatic pinning requires that hardware failover for the server vNIC be disabled.
- C. NIC teaming is controlled by the vNIC.
- D. The hardware failover option that is available for Ethernet does not affect Fibre Channel traffic.

Answer: D

**NEW QUESTION 125**

- (Exam Topic 2)

Instructions

Open the windows by clicking on the minimized title at the bottom of the viewing area. Windows can be minimized by clicking on the [-], repositioned by dragging the title bar, and resized by using the handle at the lower right corner to customize the viewing area.  
  
If you are required to access the devices to complete this scenario, the mouse cursor will use a hand symbol when moved over device icons. Click the icon to open a device terminal to interact with the hardware.  
  
Open the **Questions** window and begin by clicking a question number. When you have completed answering all questions, click **Done** to continue.

Scenario

Use your UCS knowledge on Fabric Interconnect Failover to answer the questions associated with the UCS cluster.

Exhibit1

```
UCS-A# show cluster state
Cluster Id: 0xfc436fa8b88511e0-0xa370000573cb6c04

A: UP, PRIMARY
B: UP, SUBORDINATE

HA READY
UCS-A# connect local-mgmt
Cisco Nexus Operating System (NX-OS) Software
TAC support: http://www.cisco.com/tac
Copyright (c) 2002-2011, Cisco Systems, Inc. All rights reserved.
The copyrights to certain works contained in this software are
owned by other third parties and used and distributed under
license. Certain components of this software are licensed under
the GNU General Public License (GPL) version 2.0 or the GNU
Lesser General Public License (LGPL) Version 2.1. A copy of each
such license is available at
http://www.opensource.org/licenses/gpl-2.0.php and
http://www.opensource.org/licenses/lgpl-2.1.php

UCS-A(local-mgmt)# cluster lead b
UCS-A(local-mgmt)#
```

- 1 Which statements is true regarding the Fabric Interconnect Failover configuration changes?
- 2
- 3 ☐ High availability is being setup so that cluster a and b can both be subordinate or primary.
- ☐ The fabric interconnect b changes from subordinate to primary.
- ☐ High availability is setup so that fabric interconnect will keep a to be primary and b will be lead.
- ☐ The Fabric interconnect can have two lead states, so that b will switch to primary and a will stay primary.

A. Mastered  
B. Not Mastered

**Answer:** A

**Explanation:**

The fabric interconnect b changes from subordinate to primary

**NEW QUESTION 128**

- (Exam Topic 2)

This question concerns the installation of a Cisco Unified Computing System blade server AC power supply.

Drag the options on the left to the right side in the correct order when performing the installation. Note: Not all of the steps on the left will be used.

Press the handle down and give the power supply a gentle push inward to ensure that the power supply is fully seated

Plug the power cable into the corresponding 220 VAC-inlet connector on the PDU at the rear of the chassis

Connect the other end of the power cable to the AC power source

Connect the DC input wires to the power supply terminal block

Place the power supply handle in the up position

Connect the ground wires to the power supply terminal block

Tighten the captive screw

Hold the power supply with both hands and then slide it into the power supply bay

A. Mastered  
B. Not Mastered

**Answer:** A

**Explanation:**



This question concerns the installation of a Cisco Unified Computing System blade server AC power supply.

Drag the options on the left to the right side in the correct order when performing the installation. Note: Not all of the steps on the left will be used.

Press the handle down and give the power supply a gentle push inward to ensure that the power supply is fully seated	Place the power supply handle in the up position
Plug the power cable into the corresponding 220 VAC-inlet connector on the PDU at the rear of the chassis	Hold the power supply with both hands and then slide it into the power supply bay
Connect the other end of the power cable to the AC power source	Press the handle down and give the power supply a gentle push inward to ensure that the power supply is fully seated
Connect the DC input wires to the power supply terminal block	Tighten the captive screw
Place the power supply handle in the up position	Plug the power cable into the corresponding 220 VAC-inlet connector on the PDU at the rear of the chassis
Connect the ground wires to the power supply terminal block	Connect the other end of the power cable to the AC power source
Tighten the captive screw	
Hold the power supply with both hands and then slide it into the power supply bay	

#### NEW QUESTION 132

- (Exam Topic 2)

Which three options are true regarding port profiles in Cisco UCS Manager? (Choose three.)

- A. Port profiles define operating-system kernel parameters.
- B. Port profiles are represented as a port group in vCenter.
- C. Port profiles can be used by more than one DVS.
- D. Port profile parameters are visible on vCenter.
- E. Port profile parameters can be modified from vCenter.
- F. Port profiles can be modified only from Cisco UCS Manager.

**Answer:** BCF

#### NEW QUESTION 136

- (Exam Topic 2)

Which two options occur when a server discovery policy is invoked? (Choose two.)

- A. executes the qualification in the server discovery policy against the server
- B. applies the scrub policy to the server
- C. analyzes the inventory of the server
- D. assigns the server to the selected organization, if configured
- E. creates a service profile for the server with the identity burned into the server at time of manufacture

**Answer:** AB

#### Explanation:

Configuring Server Discovery Policies Server Discovery Policy

This discovery policy determines how the system reacts when you add a new server. If you create a server discovery policy, you can control whether the system conducts a deep discovery when a server is added to a chassis, or whether a user must first acknowledge the new server. By default, the system conducts a full discovery.

If you create a server discovery policy, the following occurs when a new server starts: The qualification in the server discovery policy is executed against the server.

If the server meets the required qualifications, Cisco UCS Manager applies the following to the server:

Depending upon the option selected for the action, either discovers the new server immediately or waits for a user to acknowledge the new server

Applies the scrub policy to the server Reference:

[http://www.cisco.com/c/en/us/td/docs/unified\\_computing/ucs/sw/gui/config/guide/2-1/b\\_UCSM\\_GUI\\_Configur](http://www.cisco.com/c/en/us/td/docs/unified_computing/ucs/sw/gui/config/guide/2-1/b_UCSM_GUI_Configur)

#### NEW QUESTION 139

- (Exam Topic 2)

After staging a VEM file on a VMware ESXi 5.0 host in the /tmp directory, what is the correct command syntax to install the VEM?

- A. esxcli software vib install -d /tmp/VEM500-20110825132140-BG-release.zip-maintenance-mode
- B. esxcli software vib install -v /tmp/VEM500-20110825132140-BG-release.zip-maintenance-mode
- C. esxupdate software vib install -d /tmp/VEM500-20110825132140-BG-release.zip-maintenance-mode

D. esxupdate software vib install -v /tmp/VEM500-20110825132140-BG-release.vib-maintenance-mode

**Answer:** A

#### NEW QUESTION 140

- (Exam Topic 2)

Your systems engineer has determined all of the firmware versions that the server operating system supports. What steps are taken on Cisco UCS to avoid manual firmware upgrades on the blade servers?

- A. Use Cisco UCS Manager firmware management to upgrade all Cisco UCS blade servers to the same target firmware versions.
- B. Configure host firmware package and management firmware package policies and associate the firmware policies with the service profiles.
- C. Create a BIOS policy and define the host firmware package and management firmware package.
- D. Configure host firmware package and management firmware package policies and associate the firmware policies with the server pools.

**Answer:** B

#### NEW QUESTION 143

- (Exam Topic 2)

Which two options are valid modes for VM-FEX in a Cisco UCS Manager port profile? (Choose two.)

- A. transparent
- B. bypass
- C. standard
- D. advanced
- E. high-performance
- F. low-pass

**Answer:** CE

#### NEW QUESTION 146

- (Exam Topic 2)

When upgrading a standalone Cisco UCS C-Series server, which method is correct?

- A. direct upgrade on all components
- B. Cisco Hardware Upgrade Utility
- C. Cisco Host Upgrade Utility
- D. Cisco Server Upgrade Utility

**Answer:** C

#### NEW QUESTION 148

- (Exam Topic 2)

Which network driver is required on a VMware ESXi 5.0 host for a vNIC to enter Cisco VM-FEX universal passthrough mode?

- A. VMXNET3
- B. Vlance
- C. Flexible
- D. E1000e
- E. VMXNET5

**Answer:** A

#### NEW QUESTION 152

- (Exam Topic 2)

Which three items must be configured in the Port Profile Client in Cisco Unified Computing System Manager? (Choose three.)

- A. port profile
- B. DVS
- C. data center
- D. folder
- E. VMware vCenter IP address
- F. VM port group

**Answer:** BCD

#### NEW QUESTION 156

- (Exam Topic 2)

Which two tasks enable jumbo frames on a Cisco UCS system? (Choose two.)

- A. In the LAN cloud on Cisco UCS Manager, configure MTU 9000 in the uplink interfaces.
- B. In the LAN cloud on Cisco UCS Manager, enable jumbo frames in Fabric A and Fabric B.
- C. In the LAN cloud on Cisco UCS Manager, configure MTU 9000 in the VLAN.
- D. In the LAN cloud on Cisco UCS Manager, define a QoS system class with MTU 9000.
- E. In the service profile, configure MTU 9000 in the vNIC.
- F. In the service profile, configure MTU 9000 in the virtual machine.
- G. In the service profile, configure MTU 9000 in the uplink interfaces.

**Answer:** DE

**NEW QUESTION 157**

- (Exam Topic 2)

Which feature must be configured for Linux VMs to be able to transition from Cisco VM-FEX standard mode to universal passthrough mode?

- A. RSS
- B. MSI Interrupt Mode
- C. VEMDPA Agent
- D. Execute Disabled Bit
- E. Processor C State

**Answer:** B

**NEW QUESTION 161**

- (Exam Topic 3)

Which slot(s) contain DIMMs in a 1DPC configuration on Cisco UCS blade server?

- A. 1 and 2 only.
- B. 1
- C. 2

**Answer:** C

**Explanation:**

Reference:

[http://www.cisco.com/c/en/us/td/docs/unified\\_computing/ucs/hw/bladeservers/install/B200.html](http://www.cisco.com/c/en/us/td/docs/unified_computing/ucs/hw/bladeservers/install/B200.html)

**NEW QUESTION 163**

- (Exam Topic 3)

Which two descriptions of a WWN pool are true? (Choose two.)

- A. a collection of WWNs for use by the iSCSI interfaces in a Cisco UCS instance
- B. a collection of Ethernet MAC addresses assigned to the Ethernet adapters in a Cisco UCS instance
- C. a pool of WW port names, where WWPN is the port name assigned to the Fibre Channel port on the adapter
- D. a collection of management IP addresses used to connect to servers
- E. a pool of WW node names, where WWNN belongs to the node

**Answer:** CE

**Explanation:**

Reference:

[http://www.cisco.com/c/en/us/td/docs/unified\\_computing/ucs/sw/gui/config/guide/1-31/b\\_UCSM\\_GUI\\_Configu](http://www.cisco.com/c/en/us/td/docs/unified_computing/ucs/sw/gui/config/guide/1-31/b_UCSM_GUI_Configu)

**NEW QUESTION 165**

- (Exam Topic 3)

Which statement about an iSCSivNIC when it is created with an overlay NIC is true?

- A. It can have any VLAN allowed on it.
- B. It can be assigned a unique MAC address.
- C. It can have a unique pin group assigned to it.
- D. It can have only the overlays native VLAN associated to it.

**Answer:** D

**NEW QUESTION 167**

- (Exam Topic 3)

Where do you configure the VLAN when provisioning new VLANs in VM-FEX?

- A. vCenter on the port group
- B. Cisco UCS Manager on the port profile
- C. Cisco UCS Manager on the service profile
- D. vCenter on the host

**Answer:** B

**NEW QUESTION 172**

- (Exam Topic 3)

Which two statements about MAC addresses in the Cisco UCS are true? (Choose two.)

- A. The first 2 octets represent the manufacturer OUI.
- B. The first 3 octets represent the manufacturer OUI.
- C. The last 3 octets are assigned by the organization itself.
- D. The last 4 octets are assigned by the organization itself.

**Answer:** BC



**Explanation:**

<https://supportforums.cisco.com/t5/unified-computing-system/oui-for-wwn-and-macs/td-p/1441710> <https://supportforums.cisco.com/t5/unified-computing-system/when-to-use-wwnn-and-wwpn-pools/tdp/1614344> <http://www.vmwareadmins.com/using-a-address-naming-convention-with-cisco-ucs/>  
[https://en.wikipedia.org/wiki/MAC\\_address](https://en.wikipedia.org/wiki/MAC_address)

**NEW QUESTION 174**

- (Exam Topic 3)

Which two parameters are used by Cisco UCS for automatic Fibre Channel uplink pinning?

- A. server WWN
- B. MDS WWNN
- C. VSAN membership
- D. hash algorithm
- E. vHBA MAC address

**Answer:** AC

**Explanation:**

[https://www.cisco.com/c/en/us/td/docs/unified\\_computing/ucs/sw/gui/config/guide/3-0/b\\_UCSM\\_GUI\\_User\\_G](https://www.cisco.com/c/en/us/td/docs/unified_computing/ucs/sw/gui/config/guide/3-0/b_UCSM_GUI_User_G) [https://www.cisco.com/c/en/us/td/docs/unified\\_computing/ucs/sw/gui/config/guide/2-0/b\\_UCSM\\_GUI\\_Configuration\\_](https://www.cisco.com/c/en/us/td/docs/unified_computing/ucs/sw/gui/config/guide/2-0/b_UCSM_GUI_Configuration_)

**NEW QUESTION 178**

- (Exam Topic 3)

Which option describes the difference between "high-performance" and "none" on a VM-FEX port profile?

- A. None is software assisted, and high-performance is software and hardware assisted.
- B. None indicates that VM-FEX is not used on this interface, and high-performance indicates that is used.
- C. None is used for management profiles, and high-performance is used for mission-critical data profiles.
- D. None assumes default scheduling settings for the port profile, and high-performance gives the ports priority in scheduling.

**Answer:** A

**NEW QUESTION 181**

- (Exam Topic 3)

Which three statements about what occurs when a Cisco UCS -Series Blade Server connects to the SAN across a fabric interconnect that is enabled in Fibre Channel NPV mode are true? (Choose three.)

- A. The server ports in F Port mode are pinned to the NP Ports.
- B. The E Ports are pinned to the E Ports on the fabric interconnect.
- C. Zoning is deployed on the fabric interconnect.
- D. The fabric interconnect is not assigned a Fibre Channel domain ID.
- E. Traffic that is received on the server ports in F Port mode from the server side is pinned to the NPIV-enabled uplink ports on the fabric interconnect.
- F. The fabric interconnect must have the Fibre Channel uplink port connected to the upstream switch F Port in NPIV mode that performs the Fibre Channel forwarder function.

**Answer:** ADE

**NEW QUESTION 182**

- (Exam Topic 3)

Under which condition can you select the option to "remove" a blade server from within the Cisco UCS Manager?

- A. The server has been decommissioned before physical removal.
- B. The server has been sent a diagnostic interrupt.
- C. The server has been physically removed before decommission.
- D. The server has been powered down.

**Answer:** C

**NEW QUESTION 184**

- (Exam Topic 3)

From the Cisco UCS Manager GUI, which two configurations can be performed for Cisco UCS C-Series Rack-Mount Servers from the rack server discovery policy? (Choose two.)

- A. Whether the server is discovered immediately or after the acknowledgement of the administrator
- B. Defines the scrub policy to be used upon discovery
- C. Defines the management IP address to be associated to the server upon discovery
- D. Reverts a -Series server from Cisco UCS domain mode to standalone mode
- E. Defines the Cisco Host Upgrade Utility ISO file for the rack servers connected to the fabric interconnects

**Answer:** AB

**Explanation:**

Reference:

[http://www.cisco.com/c/en/us/td/docs/unified\\_computing/ucs/sw/gui/config/guide/20/b\\_UCSM\\_GUI\\_Configura](http://www.cisco.com/c/en/us/td/docs/unified_computing/ucs/sw/gui/config/guide/20/b_UCSM_GUI_Configura)

**NEW QUESTION 189**

- (Exam Topic 3)

Which maintenance action releases the assigned chassis ID for future use?

- A. Acknowledge chassis
- B. Reset CMOS
- C. Decommission chassis
- D. Remove chassis

**Answer:** C

**Explanation:**

Reference: [http://www.cisco.com/c/en/us/td/docs/unified\\_computing/ucs/sw/gui/config/guide/22/b\\_UCSM\\_GUI\\_Configura](http://www.cisco.com/c/en/us/td/docs/unified_computing/ucs/sw/gui/config/guide/22/b_UCSM_GUI_Configura) 86ACDE9D13C222A452

#### NEW QUESTION 194

- (Exam Topic 3)

With Cisco UCS Manager, in which location do you monitor the chassis discovery process?

- A. CMC
- B. FSM
- C. CDP
- D. DME

**Answer:** B

**Explanation:**

Reference:

[http://www.cisco.com/c/en/us/td/docs/unified\\_computing/ucs/sw/gui/config/guide/20/b\\_UCSM\\_GUI\\_Configura](http://www.cisco.com/c/en/us/td/docs/unified_computing/ucs/sw/gui/config/guide/20/b_UCSM_GUI_Configura)

#### NEW QUESTION 196

- (Exam Topic 3)

Which statement about Adapter FEX is true?

- A. Adapter FEX extends the fabric into the server.
- B. Adapter FEX extends the fabric into the hypervisor.
- C. Adapter FEX extends the fabric down to the FEX port.
- D. Adapter FEX extends the fabric down to the VM.

**Answer:** A

#### NEW QUESTION 200

- (Exam Topic 3)

Refer to the exhibit below.

The screenshot displays the Cisco UCS Director web interface. At the top, there is a navigation bar with tabs: Converged, HyperConverged, Virtual, Physical, Organizations, Policies, Administration (selected), CloudSense, and Favorites. Below this, the 'Physical Accounts' section is active. It features a sub-navigation bar with tabs: Site Management, Pods, Physical Accounts, Multi-Domain Managers, Managed Network Elements, Virtual Console Servers, and Bare Metal Agents. The 'Pods' tab is selected, showing a table of pods. The table has columns for Name, Type, Site, Description, Location, and an action column. The rows are: Default Pod (Generic, Production Site, Default datacenter, No), Pod 1 (Generic, Production Site, Pod 1 Prod Data Center, No), and Pod 2 (Generic, DR Site, DR Site Pod 1, No). Above the table, there are icons for Refresh, Favorite, Add, Device Discovery, FlexPod Account Setup, View, Edit, and Delete.

Name	Type	Site	Description	Location	
Default Pod	Generic	Production Site	Default datacenter		No
Pod 1	Generic	Production Site	Pod 1 Prod Data Center		No
Pod 2	Generic	DR Site	DR Site Pod 1		No

Which tab do you select to add an APIC account when adding an ACI fabric?

- A. Multi-Domain Managers
- B. Physical Accounts
- C. Managed Network Elements
- D. Bare Metal Agents

**Answer:** A

**Explanation:**

[https://www.cisco.com/c/en/us/td/docs/unified\\_computing/ucs/ucs-director/apic-management-guide/5-4/b\\_UCS](https://www.cisco.com/c/en/us/td/docs/unified_computing/ucs/ucs-director/apic-management-guide/5-4/b_UCS) Step 1 On the menu bar, choose Administration > Physical Accounts.

Step 2 Click the Multi-Domain Managers tab. Step 3 Click Add.

Step 4 In the Add Account dialog box, choose APIC from the Account Type drop-down list. Step 5 Click Submit.

**NEW QUESTION 204**

- (Exam Topic 3)

Refer to the exhibit.

```
Server # scope chassis
server /chassis # show adapter
server /chassis # scope adapter 2
server /chassis/adapter # scope host-eth-if eth0
server /chassis/adapter/host-eth-if # create usnic-config 0
server /chassis/adapter/host-eth-if/usnic-config *# set usnic-count 64
server /chassis/adapter/host-eth-if/usnic-config *# set cq-count 6
server /chassis/adapter/host-eth-if/usnic-config *# set rq-count 6
server /chassis/adapter/host-eth-if/usnic-config *# set tq-count 6
server /chassis/adapter/host-eth-if/usnic-config *# commit
Committed settings will take effect upon the next server reset
server /chassis/adapter/host-eth-if/usnic-config # exit
server /chassis/adapter/host-eth-if # exit
server /chassis/adapter # exit
server /chassis # exit
server # exit
server# scope bios
server /bios # scope advanced
server /bios/advanced # set IntelVTD Enabled
server /bios/advanced *# set ATS Enabled*
server /bios/advanced *# set CoherencySupport Enabled
server /bios/advanced *# commit
Changes to BIOS set-up parameters will require a reboot.
Do you want to reboot the system?[y|N]y
A system reboot has been initiated.
```

What statement is true regarding this setup created by this configuration?

- A. The NIC bypasses the kernel when sending and receiving networking packets
- B. The applications interact directly with the OS Kernel
- C. All of the other vNICs in the server are deleted and replaced by the usnic.

**Answer:** B

**Explanation:**

[https://www.cisco.com/c/en/us/td/docs/unified\\_computing/ucs/usnic/c/deployment/2\\_0\\_X/b\\_Cisco\\_usNIC\\_Dep](https://www.cisco.com/c/en/us/td/docs/unified_computing/ucs/usnic/c/deployment/2_0_X/b_Cisco_usNIC_Dep)

**NEW QUESTION 208**

- (Exam Topic 3)

Which three components are parts of the Cisco UCS -Series Blade Server software bundle? (Choose three.)

- A. the adapter firmware
- B. the Kernel and system firmware for fabric interconnects
- C. the BIOS firmware
- D. the IOM firmware
- E. the Cisco UCS Manager software
- F. the board controller firmware

**Answer:** ACF

**Explanation:**

Reference:

[http://www.cisco.com/c/en/us/td/docs/unified\\_computing/ucs/sw/firmware-mgmt/gui/2-2/b\\_GUI\\_Firmware\\_Ma](http://www.cisco.com/c/en/us/td/docs/unified_computing/ucs/sw/firmware-mgmt/gui/2-2/b_GUI_Firmware_Ma)

**NEW QUESTION 211**

- (Exam Topic 3)

Refer to the exhibit.



<b>Table 1</b> 1 - Fabric uplink interface active	All the HIF ports are pinned to the active uplink interface
<b>Table 2</b> 2 - Fabric uplink interfaces active	HIF Ports : 1,2,3,4 to uplink interface 1 HIF Ports: 5,6,7,8 to uplink interface 2
<b>Table 3</b> 4 - Fabric uplink interfaces active	HIF Ports: 1,8 to uplink interface 1 HIF Ports: 2,3 to uplink interface 2 HIF Ports: 6,7 to uplink interface 3 HIF Ports: 4,5 to uplink interface 4
<b>Table 4</b> 8 – Fabric uplink interfaces active	HIV Port: 1 to uplink interface 1 HIV Port: 2 to uplink interface 2 HIV Port: 3 to uplink interface 3 HIV Port: 4 to uplink interface 4 HIV Port: 5 to uplink interface 5 HIV Port: 6 to uplink interface 6 HIV Port: 7 to uplink interface 7 HIV Port: 8 to uplink interface 8

Which tables correctly map the HIF ports to active FEX NIF ports on a Cisco UCS 2208X IOM in discrete pinning mode?

- A. Table 2 and Table 4
- B. Table 1 and Table 4
- C. Table 2 and Table 3
- D. Table 1 and Table 2
- E. Table 3 and Table 4

**Answer:** B

**Explanation:**

Reference:

[http://www.cisco.com/c/en/us/td/docs/unified\\_computing/ucs/ts/guide/UCSTroubleshooting/UCSTroubleshooting\\_chapter\\_01001.html](http://www.cisco.com/c/en/us/td/docs/unified_computing/ucs/ts/guide/UCSTroubleshooting/UCSTroubleshooting_chapter_01001.html)

#### NEW QUESTION 216

- (Exam Topic 3)

Which two parameters must be configured on a standalone Cisco UCS C-Series Server to export the technical support data to a remote server? (Choose two)

- A. Specify a remote TFTP server IP address.
- B. Install a certificate
- C. Install an FTP server
- D. Set the source as the UCS server IP address.
- E. Specify the remote relative path and file name.

**Answer:** AE

**Explanation:**

Reference:

[https://www.cisco.com/c/en/us/td/docs/unified\\_computing/ucs/c/sw/gui/config/guide/2-0/b\\_Cisco\\_UCS\\_Cseries](https://www.cisco.com/c/en/us/td/docs/unified_computing/ucs/c/sw/gui/config/guide/2-0/b_Cisco_UCS_Cseries)

#### NEW QUESTION 219

- (Exam Topic 3)

You must upgrade a Cisco UCS -Series Server. Where must the Cisco UCS bundle image be located before you can begin the upgrade?

- A. the Cisco Integrated Management Controller memory of the server
- B. a USB drive connected to a Cisco UCS Fabric Interconnect
- C. a TFTP server accessible to the Cisco UCS Fabric Interconnect
- D. the flash file system of the fabric interconnect

**Answer:** C

**Explanation:**

Reference:

[http://www.cisco.com/c/en/us/td/docs/unified\\_computing/ucs/sw/firmware-mgmt/gui/21/b\\_GUI\\_Firmware\\_Manager.html#concept\\_1923688E7A2E46239DCAE363E4A3DE81](http://www.cisco.com/c/en/us/td/docs/unified_computing/ucs/sw/firmware-mgmt/gui/21/b_GUI_Firmware_Manager.html#concept_1923688E7A2E46239DCAE363E4A3DE81)

#### NEW QUESTION 223

- (Exam Topic 3)

Which two components can be specified in a host firmware package? (Choose two.)

- A. CPU
- B. BIOS
- C. Cisco Integrated Management Controller
- D. LOM
- E. DIMM

**Answer:** BC

**NEW QUESTION 224**

- (Exam Topic 3)

Refer to the exhibit

The screenshot shows the 'Management Interfaces' configuration window. It has two tabs: 'Management Interfaces' and 'Management Interfaces Monitoring Policy'. The 'Virtual IP' section contains fields for IPv4 Address (10.0.0.200), IPv6 Address (::), Domain Name, Name (machine), System Owner, System Site, and System Description. The 'Mode' is set to 'Cluster'. Below this are two sections for 'Fabric Interconnect A' and 'Fabric Interconnect B'. Each has tabs for 'IPv4' and 'IPv6'. Under 'Fabric Interconnect A', the IPv4 tab is selected, showing IP Address (10.0.0.198), Subnet Mask (255.255.255.0), and Default Gateway (10.0.0.111). Under 'Fabric Interconnect B', the IPv4 tab is also selected, showing IP Address (10.0.0.199), Subnet Mask (255.255.255.0), and Default Gateway (10.0.0.111). At the bottom are buttons for 'Ok', 'Apply', 'Cancel', and 'Help'.

Fabric Interconnect B is in a primary state. Which IP addresses can you use to connect to Fabric Interconnect B?

- A. 10.0.0.198, 10.0.0.199 and 10.0.0.200
- B. 10.0.0.199 only

- C. 10.0.0.199 and 10.0.0.200 only  
D. 10.0.0.200 only

**Answer:** C

#### NEW QUESTION 229

- (Exam Topic 3)

You plan to implement FCoE on a Cisco UCS -Series server. Which option must you configure from the Cisco Integrated Management Controller GUI?

- A. a vNIC failover  
B. a boot table entry  
C. NIV  
D. FIP mode

**Answer:** D

#### Explanation:

Reference:

[http://www.cisco.com/c/en/us/td/docs/unified\\_computing/ucs/c/sw/gui/config/guide/1-21/b\\_Cisco\\_UCS\\_CSerie\\_1/Cisco\\_UCS\\_CSeries\\_Servers\\_Integrated\\_Management\\_Controller\\_Configuration\\_Guide\\_1\\_2\\_1\\_chapter9.ht](http://www.cisco.com/c/en/us/td/docs/unified_computing/ucs/c/sw/gui/config/guide/1-21/b_Cisco_UCS_CSerie_1/Cisco_UCS_CSeries_Servers_Integrated_Management_Controller_Configuration_Guide_1_2_1_chapter9.ht)

#### NEW QUESTION 233

- (Exam Topic 3)

Which options is the only supported link aggregation protocol on Cisco UCS Manager?

- A. Multipath  
B. PagP  
C. FLOGI  
D. LACP  
E. FCOE

**Answer:** D

#### Explanation:

UCS port channel configuration is statically set to Link Aggregation Control Protocol (LACP) mode active. This configuration cannot be modified; therefore, all upstream port-channel configurations must adhere to LACP mode active as well. Alternatively, you can configure the upstream switchports for LACP mode passive.

Reference:

<https://www.cisco.com/c/en/us/support/docs/servers-unified-computing/ucs-manager/116095-configure-ucsupstr>

#### NEW QUESTION 234

- (Exam Topic 3)

You have a Cisco UCS server connected to Cisco Fabric Interconnects. Which two options are characteristics of a virtual machine that is deployed by using VMFEX in high-performance mode in this environment? (Choose two.)

- A. The virtual machine connects to a Cisco VIF on the external switch by using Cisco VN-Link in hardware, bypassing the hypervisor.  
B. The dynamic vNIC can connect redundantly by using hardware-based failover to the Cisco UCS Fabric interconnect cluster.  
C. Dynamic vNICs inherit parameters from static vNICs  
D. The virtual machine can share the same dynamic vNIC with another virtual machine in VMFEX highperformance mode  
E. The virtual machine deployed in VM-FEX high-performance mode runs on the host by using the default BIOS policy that is available in the Cisco UCS Manager

**Answer:** AB

#### Explanation:

In high-performance mode, traffic to and from a virtual machine (VM) bypasses the DVS and hypervisor. Traffic travels directly between VMs and the virtual interface card (VIC) adapter.

The benefits of high-performance mode are as follows:

- Increases I/O performance and throughput.
- Decreases I/O latency.
- Improves CPU utilization for virtualized I/O-intensive applications. You must modify or create several policies in order for VM-FEX for VMware to function optimally:
- VMwarePassThrough Ethernet Adapter Policy (high-performance mode only)
- Dynamic vNIC Connection Policies
- BIOS Policy (high-performance mode only)
- VM Lifecycle Policy

Dynamic vNICs are always protected in Cisco UCS, but this field allows you to select a preferred fabric, if any. You can choose one of the following:

- Protected Pref A—Cisco UCS attempts to use fabric A but fails over to fabric B if necessary
- Protected Pref B—Cisco UCS attempts to use fabric B but fails over to fabric A if necessary
- Protected—Cisco UCS uses whichever fabric is available

Reference: [https://www.cisco.com/c/en/us/td/docs/unified\\_computing/ucs/sw/vm\\_fex/vmware/gui/config\\_guide/b\\_GUI\\_V](https://www.cisco.com/c/en/us/td/docs/unified_computing/ucs/sw/vm_fex/vmware/gui/config_guide/b_GUI_V)

#### NEW QUESTION 237

- (Exam Topic 3)

You manage Cisco UCS -Series Rack-Mount Servers. Which three components can you upgrade by using the Cisco Host Upgrade Utility? (Choose three.)

- A. the LAN on motherboard  
B. the Cisco Integrated Management Controller  
C. the operating system images  
D. the system BIOS  
E. the fabric interconnects  
F. the FEX modules



**Answer:** ABD

**Explanation:**

Reference:

[http://www.cisco.com/c/en/us/td/docs/unified\\_computing/ucs/c/sw/lomug/2-0x/b\\_huu\\_2\\_0\\_3/b\\_huu\\_2\\_0\\_3\\_cha](http://www.cisco.com/c/en/us/td/docs/unified_computing/ucs/c/sw/lomug/2-0x/b_huu_2_0_3/b_huu_2_0_3_cha)

**NEW QUESTION 239**

- (Exam Topic 3)

While configuring VM-FEX for Hyper-V, the virtual switch does not show up when you add the host with the port-profile management snap-in. Which statement describes the most likely cause?

- A. SR-IOV is not enabled for the virtual switch inside Hyper-V.
- B. Cisco Nexus 1000v is not enabled for the virtual switch.
- C. Hyper-V requires Cisco UCS Manager to utilize Cisco Discovery Protocol on the vNIC profile.
- D. An active VM is not associated with the port profile.
- E. VM-FEX does not work with Hyper-V.
- F. VM-FEX has been configured on the Catalyst switch but not in System Center yet.

**Answer:** A

**NEW QUESTION 242**

- (Exam Topic 3)

Which two options are valid server pool policy qualifications? (Choose two.)

- A. server model
- B. description
- C. user label
- D. power group

**Answer:** AD

**NEW QUESTION 245**

- (Exam Topic 3)

When deploying Nexus 5000 switches in NPV mode, what technology will help with resilience and increase throughput?

- A. F-port-channel trunk
- B. FCoE

**Answer:** A

**Explanation:**

Reference: [https://www.cisco.com/c/en/us/td/docs/switches/datacenter/nexus5000/sw/san\\_switching/421\\_n1\\_1/b\\_Cisco\\_n5](https://www.cisco.com/c/en/us/td/docs/switches/datacenter/nexus5000/sw/san_switching/421_n1_1/b_Cisco_n5)

**NEW QUESTION 246**

- (Exam Topic 3)

Refer to the exhibit.



Which statement about the ESXi installation on a Cisco UCS C-Series server is true?

- A. The ESXi is installed on a local drive and the SATA drive is selected as the first boot option
- B. The ESXi is installed on a local RAID array and the local RAID group is selected as the first boot option
- C. During the ESXi installation process, on a local RAID you must select the local RAID group
- D. During the ESXi installation process, you must select the location of the ESXi image file.

**Answer:** B

**NEW QUESTION 251**

- (Exam Topic 3)

Which technology makes VM-FEX possible?

- A. VXLAN
- B. VNTAG

- C. VPC
- D. DVS

**Answer:** B

#### NEW QUESTION 253

- (Exam Topic 3)

Which two statements about the provisioning of Cisco VM-FEX DirectPath I/O mode are true? (Choose two.)

- A. The VT-D feature on the ESX host server must be disabled before you can enable VMDirectPath.
- B. VM-FEX standard mode is the same as VM-FEX high-performance mode.
- C. Enabling high performance turns on VMDirectPath mode.
- D. VMDirectPath mode prevents the use of VMware vMotion.
- E. To use Cisco VM-FEX DirectPath I/O mode, a virtual machine must have a dynamic vNIC and two static vNICs on the VIC adapter.

**Answer:** CE

#### Explanation:

Reference:

[http://www.cisco.com/c/en/us/solutions/collateral/data-center-virtualization/unifiedcomputing/vm\\_fex\\_best\\_pra](http://www.cisco.com/c/en/us/solutions/collateral/data-center-virtualization/unifiedcomputing/vm_fex_best_pra)

#### NEW QUESTION 254

- (Exam Topic 3)

Which three statements are a result of utilizing org permissions on VLANs within a sub-org? (Choose three.)

- A. VLAN IDs can be defined only once globally.
- B. VLAN IDs can be defined within each sub-org.
- C. VLAN name must match across orgs and sub-orgs.
- D. VLAN name can be different per sub-org.
- E. Sub-org vNICs can utilize parent org VLANs.
- F. Parent org vNICs can utilize sub-org VLANs.
- G. Sub-org vNICs can utilize only parent org native VLANs.

**Answer:** BDF

#### NEW QUESTION 258

- (Exam Topic 3)

While configuring communication between vCenter and Cisco UCS, which two items are contained in the extension file? (Choose two.)

- A. extension key
- B. plug-in version information
- C. SSL private certificate
- D. Cisco UCS Manager SSL public certificate
- E. SSH public key
- F. Cisco UCS Manager admin credentials
- G. IP address of the hosts utilizing VM link
- H. vCenter SSL public certificate

**Answer:** AD

#### NEW QUESTION 262

- (Exam Topic 3)

Which boot option is recommended for a boot policy because it offers the most service profile mobility within a system?

- A. iSCSI boot
- B. local disk boot
- C. LAN boot
- D. SAN boot

**Answer:** D

#### NEW QUESTION 267

.....

## Thank You for Trying Our Product

\* 100% Pass or Money Back

All our products come with a 90-day Money Back Guarantee.

\* One year free update

You can enjoy free update one year. 24x7 online support.

\* Trusted by Millions

We currently serve more than 30,000,000 customers.

\* Shop Securely

All transactions are protected by VeriSign!

**100% Pass Your 300-175 Exam with Our Prep Materials Via below:**

<https://www.certleader.com/300-175-dumps.html>