

Exam Questions 70-703

Administering Microsoft System Center Configuration Manager and Cloud Services Integration

<https://www.2passeasy.com/dumps/70-703/>



NEW QUESTION 1

Note: This question is part of a series of questions that present the same scenario. Each question in the series contains a unique solution that might meet the stated goals. Some question sets might have more than one correct solution, while others might not have a correct solution.

After you answer a question in this section, you will NOT be able to return to it. As a result, these questions will not appear in the review screen.

You plan to deploy System Center Configuration Manager (Current Branch) by using an initial pilot deployment

The pilot deployment will contain five computers that run Windows 10.

You need to deploy the Configuration Manager client to the five computers only. Solution: From each client, you run CMEnroll.exe.

Does this meet the goal?

- A. Yes
- B. No

Answer: B

NEW QUESTION 2

You have a deployment of System Center Configuration Manager (Current Branch). 5,000 computers have the Configuration Manager client installed.

You need to deploy an online-licensed app named App1 from the Microsoft Store for Business to all Configuration Manager clients.

What should you do first?

- A. From the Configuration Manager console, launch the Microsoft Azure Services Wizard and select Microsoft Store for Business.
- B. From the Microsoft Store for Business portal, create a new AutoPilot deployment profile.
- C. From the Microsoft Store for Business portal, invite a line-of-business (LOB) publisher to your organization.
- D. From the Configuration Manager console, create a new collection.

Answer: D

NEW QUESTION 3

Note: This question is part of a series of questions that present the same scenario. Each question in the series contains a unique solution that might meet the stated goals. Some question sets might have more than one correct solution, while others might not have a correct solution.

After you answer a question in this section, you will NOT be able to return to it. As a result, these questions will not appear in the review screen.

You deploy the first primary site server to your organization. Discovery is not configured. You need to deploy the Configuration Manager client to five client computers in a workgroup. Solution: You deploy the client by using a software deployment.

Does this meet the goal?

- A. Yes
- B. No

Answer: B

Explanation:

References: <https://docs.microsoft.com/en-us/sccm/core/clients/deploy/deploy-clients-to-windows-computers>

NEW QUESTION 4

You have a deployment of System Center Configuration Manager (Current Branch). You need to create a task sequence to deploy Windows 10.

Which two components should you include in the task sequence? Each correct answer presents part of the solution.

NOTE: Each correct selection is worth one point.

- A. a driver package
- B. an operating system image
- C. software updates
- D. a boot image

Answer: BD

Explanation:

References:

<https://docs.microsoft.com/en-us/sccm/osd/deploy-use/create-a-task-sequence-to-install-an-operating-system>

NEW QUESTION 5

Note: This question is part of a series of questions that use the same scenario. For your convenience, the scenario is repeated in each question. Each question presents a different goal and answer choices, but the text of the scenario is exactly the same in each question in this series.

Start of repeated scenario.

You work for a company named ADatum Corporation.

The ADatum network contains an Active Directory domain named adatum.com.

You have a partner company named Contoso, Ltd. The Contoso network contains an Active Directory domain named adatum.com.

All the client computers at both companies run Windows 10.

Each company has a deployment of System Center Configuration Manager (Current Branch). ADatum has sales and IT departments. ADatum has a collection for each department.

Contoso has research, marketing, and human resources (HR) departments. Contoso has a collection for each department.

ADatum purchases Contoso.

You configure on-premises mobile device management (MDM) in adatum.com. You enroll the client computers in the IT department into on-premises MDM.

You configure hybrid MDM in contoso.com. End of repeated scenario.

You need to view a detailed hardware inventory of an IT department computer that is currently offline. Which tool should you use?

- A. Resource Explorer
- B. Device Manager
- C. Microsoft Intune in the Microsoft Azure portal

D. the Microsoft Azure portal

Answer: A

Explanation:

References: <https://technet.microsoft.com/en-us/library/gg712311.aspx>

NEW QUESTION 6

You deploy System Center Configuration Manager (Current Branch). You have client computers that run either Windows 7 or Windows 10.

You need to deploy the Configuration Manager client to meet the following requirements:

▶ Install the client on the Windows 7 computers the next time the computers restart.

How should you deploy each client? To answer, select the appropriate options in the answer area. NOTE: Each correct selection is worth one point.

Answer Area

Windows 7:	<div>▼</div> <div> <p>Use client push installation</p> <p>Deploy the client to a collection</p> <p>Run ccmsetup.exe from a command line.</p> <p>Enable an automatic site-wide client push installation.</p> <p>Create a Group Policy object (GPO) that runs a startup script.</p> </div>
Windows 10:	<div>▼</div> <div> <p>Use client push installation</p> <p>Deploy the client to a collection</p> <p>Run ccmsetup.exe from a command line.</p> <p>Enable an automatic site-wide client push installation.</p> <p>Create a Group Policy object (GPO) that runs a startup script.</p> </div>

- A. Mastered
- B. Not Mastered

Answer: A

Explanation:

References: <https://technet.microsoft.com/en-us/library/gg712298.aspx>

NEW QUESTION 7

You deploy System Center Configuration Manager (Current Branch).

You need to manage the malware settings for Configuration Manager clients. What should you do first?

- A. Add an Endpoint Protection point.
- B. Disable Windows Defender.
- C. Create a configuration baseline.
- D. Create a compliance policy.

Answer: A

Explanation:

References: <https://docs.microsoft.com/en-us/sccm/protect/deploy-use/endpoint-protection-configure>

NEW QUESTION 8

Note: This question is part of a series of questions that present the same scenario. Each question in the series contains a unique solution that might meet the stated goals. Some question sets might have more than one correct solution, while others might not have a correct solution.

After you answer a question in this section, you will NOT be able to return to it. As a result, these questions will not appear in the review screen.

You have a deployment of System Center Configuration Manager (Current Branch). You configure a cloud management gateway for Configuration Manager.

You have a client computer that is currently on the corporate network.

You need to force the computer to get the location of the cloud management gateway immediately. Solution: You restart the SMS Agent Host service.

Does this meet the goal?

- A. Yes
- B. No

Answer: A

NEW QUESTION 9

Note: This question is part of a series of questions that present the same scenario. Each question in the series contains a unique solution that might meet the stated goals. Some question sets might have more than one correct solution, while others might not have a correct solution.

After you answer a question in this section, you will NOT be able to return to it. As a result, these questions will not appear in the review screen.

Your company uses a network ID of 10.0.0.0/8.

The company opens a new office that uses a network ID of 10.5.0.0/16. The office has three floors. Each floor has a VLAN. The network ID of each VLAN is 10.5.10.0/24, 10.5.20.0/24, and 10.5.30.0/24.

You create a distribution point for the new office.

You need to ensure that the clients in the new office obtain content from the new distribution point. Solution: Create an Active Directory site associated to the 10.5.0.0/16 subnet, and then create an Active Directory site boundary.

Does this meet the goal?

- A. Yes
- B. No

Answer: B

NEW QUESTION 10

You have a deployment of System Center Configuration Manager (Current Branch). You configure the environment for co-management.

You need to install the Configuration Manager client on all computers that are enrolled in Microsoft Intune. Which three actions should you perform? Each correct answer presents part of the solution.

NOTE: Each correct selection is worth one point.

- A. Distribute the Configuration Manager client installation files to the cloud-based distribution point.
- B. From Intune, deploy an app that contains Ccmsetup.msi.
- C. From Configuration Manager, deploy a cloud-based distribution point.
- D. From Configuration Manager, enable site-wide client push installation.
- E. From Intune, deploy an app that contains Client.msi.

Answer: BDE

NEW QUESTION 10

You use System Center Configuration Manager (Current Branch) to manage client computers that run Windows 7. You have a Microsoft Application Visualization {App-V} package named Appl.

You need to deploy App1 to the computers by using Configuration Manager and ensure that the App1 runs. What should you do first?

- A. Install the App-V Sequencer on a reference computer.
- B. From the Configuration Manager console, create an App-V virtual environment.
- C. Deploy the App-V client to the computers.
- D. Configure the Enable App-V Client setting by using a Group Policy object (GPO).

Answer: D

Explanation:

References:

<https://docs.microsoft.com/en-us/windows/application-management/app-v/appv-enable-the-app-v-desktop-client>

NEW QUESTION 14

You have a deployment of System Center Configuration Manager (Current Branch).

Your company has a main office and a branch office. The branch office has five users. Some users use laptops and some use desktop computers.

All the servers for the company are located in the main office. The branch office connects to the main office by using a VPN over a DSL connection to the main office.

You need to minimize the bandwidth used to deploy updates to branch office clients over the VPN connection. The solution must minimize costs.

- A. a pull-distribution point
- B. a cloud management gateway
- C. BranchCache
- D. a cloud-based distribution point

Answer: C

Explanation:

References: <https://docs.microsoft.com/en-us/sccm/core/plan-design/hierarchy/design-a-hierarchy-of-sites>

NEW QUESTION 15

Your company has offices in Toronto and New York. The Toronto office has 1,000 users. The New York office has 500 users.

You have a deployment of System Center Configuration Manager (Current Branch) in a data center. The primary site server hosts the Management point site system role and the Software update point the system role.

A distribution point is deployed to the Toronto office.

You need to deploy Windows 10 to all the client computers in the company by using PXE. The solution must meet the following requirements:

The computers in the New York office will be reformatted. The user data and settings will be discarded. The computers in the Toronto office will be replaced by new computers. The user data and settings will be migrated by using side-by-side migrations.

Which site system role should you add to each office before the deployment? To answer, drag the appropriate roles to the correct offices. Each role may be used once, more than once, or not at all. You may need to drag the split bar between panes or scroll to view content.

NOTE: Each correct selection is worth one point.

Roles	Answer Area
Distribution point	Toronto: <input type="text" value="Role"/>
Enrollment point	
Fallback status point	New York: <input type="text" value="Role"/>
State migration point	

- A. Mastered
- B. Not Mastered

Answer: A

Explanation:

References:

<https://docs.microsoft.com/en-us/sccm/osd/get-started/prepare-site-system-roles-for-operating-system-deployme>

NEW QUESTION 16

Your network contains an Active Directory forest named adatum.com. All client computers run Windows 10. You have a deployment of System Center Configuration Manager (Current Branch) that contains a primary site named S01. S01 contains the servers shown in the following table.

Server name	Site system role
Server 1	Software update point
Server 2	Distribution point
Server 3	Service connection point

You plan to use Configuration Manager to deploy software updates. You create a software update group named UpdateGroup1. You need to ensure that you can deploy express installation files to the client computers. What should you configure?

- A. the Software update point Properties of Server1
- B. the Distribution point Properties of Server2
- C. the Software Update Point Component Properties of S01
- D. the Service connection point Properties of Server3

Answer: A

Explanation:

References:

<https://docs.microsoft.com/en-us/sccm/sum/deploy-use/manage-express-installation-files-for-windows-10-updat>

NEW QUESTION 18

Note: This question is part of a series of questions that present the same scenario. Each question in the series contains a unique solution that might meet the stated goals. Some question sets might have more than one correct solution, while others might not have a correct solution.

After you answer a question in this section, you will NOT be able to return to it. As a result, these questions will not appear in the review screen.

You have a deployment of System Center Configuration Manager (Current Branch). You configure a cloud management gateway for Configuration Manager.

You have a client computer that is currently on the corporate network.

You need to force the computer to get the location of the cloud management gateway immediately. Solution: You restart the Network Location Awareness service.

Does this meet the goal?

- A. Yes
- B. No

Answer: B

NEW QUESTION 20

You have a deployment of System Center Configuration Manager (Current Branch). You configure hybrid mobile device management (MDM).

You need to ensure that you can manage Apple iOS devices by using Configuration Manager.

Which four actions should you perform in sequence? To answer, move the appropriate actions to the answer area and arrange them in the correct order.

Actions

Add an Apple Volume Purchase Program token to Configuration Manager.

Upload an Apple Push Notification (APN) certificate to Microsoft Intune.

Download sideloading keys.

Download an Apple Push Notification (APN) certificate.

Submit a request to the Apple Push Notification Certification Portal.

Create an Apple Push Notification (APN) certificate request.

Answer Area

⏪

⏩

⏴

⏵

- A. Mastered
- B. Not Mastered

Answer: A

Explanation:

References: <https://www.systemcenterdudes.com/enroll-ios-device-sccm/>

NEW QUESTION 23

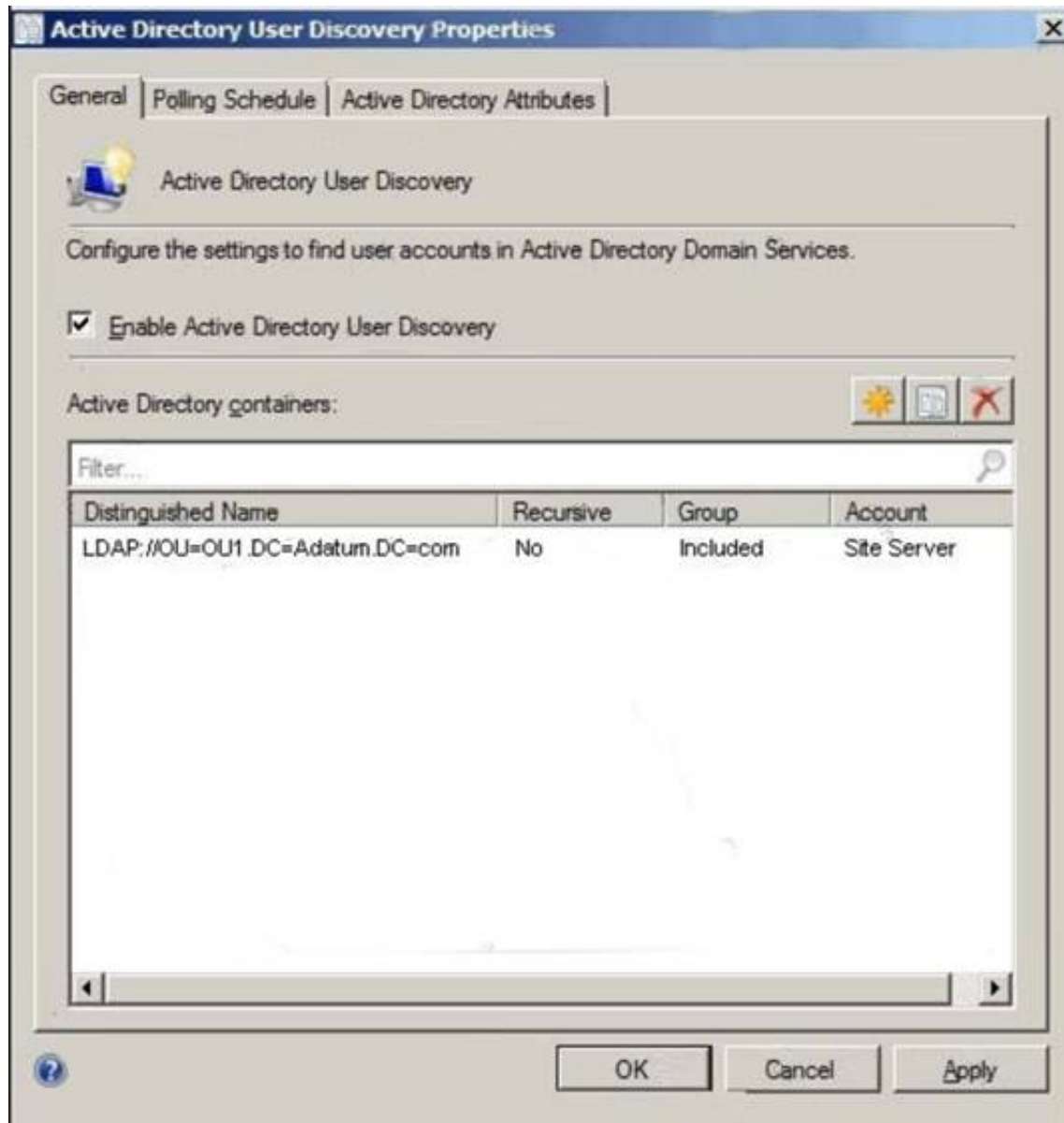
Your network contains as Active Directory forest named adatum.com. The forest has a deployment of System Center Configuration Manager (Current Branch). The adatum.com domain contains the organizational units (OUs) shown in the following table.

OU name	Parent
OU1	Adatum.com
OU2	Adatum.com
OU11	OU1

The adatum.com domain contains the groups shown in the following table.

Group Name	OU
Group 1	OU1
Group2	OU11

Active Directory User Discovery is configured as shown in the exhibit. (Click the Exhibit button.) Exhibit:



You preform the following actions:

- ▶ Create a user named User1 in OU11.
- ▶ Create a user named User2 in OU2 in OU2 and add User2 to Group2.
- ▶ Create a user named User3 in OU2 and add User3 to Group1.

For each of the following statements, select Yes if the statement is true. Otherwise, select False. NOTE: Each correct selection is worth one point.

Answer Area

Statements	Yes	No
Configuration Manager will discover User1.	<input type="radio"/>	<input type="radio"/>
Configuration Manager will discover User2.	<input type="radio"/>	<input type="radio"/>
Configuration Manager will discover User3.	<input type="radio"/>	<input type="radio"/>

- A. Mastered
- B. Not Mastered

Answer: A

Explanation:

References: <https://technet.microsoft.com/en-us/library/bb693489.aspx>

NEW QUESTION 24

You install the System Center Configuration Manager client on a computer. When you check the Configuration Manager console, the computer does not appear in the console. Other computers appear in the console. You need to review the Configuration Manager logs for the computer. What should you use?

- A. the cmtrace.exe command
- B. the Configuration Manager console
- C. the statview.exe command
- D. the Event Viewer console

Answer: A

Explanation:

References: <https://docs.microsoft.com/en-us/sccm/core/plan-design/hierarchy/log-files>

NEW QUESTION 28

You have a deployment of System Center Configuration Manager (Current Branch). You add the cloud management gateway connector point to the deployment. Which site system role can be configured to receive the traffic from the cloud management gateway?

- A. Service connection point
- B. Distribution point
- C. Management point
- D. Endpoint Protection point

Answer: C

Explanation:

References: <https://www.systemcenterdudes.com/how-to-setup-an-sccm-cloud-management-gateway/>

NEW QUESTION 29

Note: This question is part of a series of questions that present the same scenario. Each question in the series contains a unique solution that might meet the stated goals. Some question sets might have more than one correct solution, while others might not have a correct solution.

After you answer a question in this section, you will NOT be able to return to it. As a result, these questions will not appear in the review screen.

You have a deployment of System Center Configuration Manager (Current Branch). You configure hybrid mobile device management (MDM).

You have a support technician named User1. Your company purchases 300 Apple iPhones.

You need to ensure that User1 can enroll the iPhones.

Solution: From a web browser, you request an Enrollment Agent certificate from a certification authority (CA).

Does this meet the goal?

- A. Yes
- B. No

Answer: B

Explanation:

References:

<https://docs.microsoft.com/en-us/sccm/mdm/deploy-use/enroll-devices-with-device-enrollment-manager>

NEW QUESTION 34

You have a deployment of System Center Configuration Manager (Current Branch).

You configure the Backup Site Server maintenance task to back up Configuration Manager to a local folder. You need to create a script to restart the Configuration Manager server after the backup completes.

How should you create the script? To answer, select the appropriate options in the answer area. NOTE: Each correct selection is worth one point.

Script file to create:

AfterBackup.bat	<input type="checkbox"/>
ApplicationHost.config	<input type="checkbox"/>
Backup.xml	<input type="checkbox"/>
BackupTask.ps1	<input type="checkbox"/>

Script file location:

Program Files\Microsoft Configuration Manager\inboxes\schedule.box	<input type="checkbox"/>
Program Files\Microsoft Configuration Manager\inboxes\smsbkup.box	<input type="checkbox"/>
Program Files\Microsoft Configuration Manager\scripts	<input type="checkbox"/>
Windows\WinSxS\Backup	<input type="checkbox"/>

- A. Mastered
- B. Not Mastered

Answer: A

Explanation:

References: <https://docs.microsoft.com/en-us/sccm/protect/understand/backup-and-recovery>

NEW QUESTION 39

Note: This question is part of a series of questions that use the same scenario. For your convenience, the scenario is repeated in each question. Each question presents a different goal and answer choices, but the text of the scenario is exactly the same in each question in this series.

Start of repeated scenario.

You work for a company named ADatum Corporation.

The ADatum network contains an Active Directory domain named adatum.com.

You have a partner company named Contoso, Ltd. The Contoso network contains an Active Directory domain named adatum.com.

All the client computers at both companies run Windows 10.

Each company has a deployment of System Center Configuration Manager (Current Branch). ADatum has sales and IT departments. ADatum has a collection for each department.

Contoso has research, marketing, and human resources (HR) departments. Contoso has a collection for each department.

ADatum purchases Contoso.

You configure on-premises mobile device management (MDM) in adatum.com. You enroll the client computers in the IT department into on-premises MDM.

You configure hybrid MDM in contoso.com. End of repeated scenario.

You need to enroll the computers of the managers into MDM.

What are two possible ways to achieve the goal? Each correct answer presents a complete solution.

NOTE: Each correct selection is worth one point.

- A. Instruct the managers to run the Add-Computer cmdlet.
- B. Distribute a provisioning package to the manager
- C. Instruct the managers to run the provisioning package.
- D. Instruct the managers to use the Settings app to connect to a work or school account.
- E. Instruct the managers to modify the network ID from the System settings.

Answer: BC

Explanation:

References:

<https://docs.microsoft.com/en-us/windows/client-management/mdm/bulk-enrollment-using-windows-provisioning> <https://docs.microsoft.com/en-us/sccm/mdm/deploy-use/user-enroll-devices-on-premises-mdm>

NEW QUESTION 42

You have a deployment of System Center Configuration Manager (Current Branch).

You need to deploy an application to the users in the sales department. The deployment must meet the following requirements:

- Install the application on client computers that have at least 5 GB of RAM.
- Validate that the deployment of the application was successful. Which settings should you configure for the deployment?

- A. Detection Method and Requirements
- B. Dependencies and User Experience
- C. Install Behavior and Dependencies
- D. User Experience and Detection Method
- E. Requirements and Dependencies

Answer: A

Explanation:

References:

<https://blogs.msdn.microsoft.com/scstr/2012/05/31/how-to-create-an-application-in-configuration-manager-2012>

NEW QUESTION 44

You upgrade a Configuration Manager site by using Updates and Servicing. You do not upgrade the Configuration Manager client.

You need to pilot the upgrade of the Configuration Manager client on 10 percent of the computers. What should you do?

- A. Create a collection that contains the pilot client
- B. From the Hierarchy Settings Properties, configure the Client Upgrade setting
- C. Modify the setting for the production client.
- D. Create a collection that contains the pilot client
- E. From the Hierarchy Settings Properties, configure the Client Upgrade setting
- F. Modify the setting for the pre-production client.
- G. In the Site Maintenance settings, modify the Clear Install Flag maintenance task
- H. From the Hierarchy Settings Properties, configure the Client Upgrade setting
- I. Modify the settings for the production client.
- J. Create an Active Directory security group that contains the pilot client
- K. In the Site Maintenance settings, modify the Update Application Available Targeting maintenance task.

Answer: B

Explanation:

References: <https://docs.microsoft.com/en-us/sccm/core/clients/manage/upgrade/test-client-upgrades>

NEW QUESTION 45

You deploy System Center Configuration Manager (Current Branch) to manage desktop computers. On the reporting services point, you discover that the following reports are missing:

- ▶ Application Deployment – Historical
- ▶ List of Malware Detected – Historical
- ▶ General Software Inventory – Historical
- ▶ General Hardware Inventory – Historical
- ▶ Infrastructure Health Overview – Historical
- ▶ Software Distribution Summary – Historical
- ▶ Endpoint Protection and Software Update Compliance – Historical

You need to ensure that you can generate reports for long-term historical data.

What should you do first?

- A. Create report subscriptions.

- B. Install Microsoft SQL Server Report Builder.
- C. Modify the properties of the reporting services point.
- D. Add a Data Warehouse service point.

Answer: D

Explanation:

References: <https://docs.microsoft.com/en-us/sccm/core/servers/manage/data-warehouse>

NEW QUESTION 50

You have a deployment of System Center Configuration Manager (Current Branch). Your company has two sites named Site01 and Site02. Site02 has 200 client computers that run Windows 10 and a server named Server01. You add the Distribution point site system role to Server01. You need to ensure that only the client computers in Site02 can download content from Server01. What should you configure?

- A. security scopes
- B. security roles
- C. boundary groups
- D. boundary group relationships

Answer: C

Explanation:

References: <https://github.com/MicrosoftDocs/SCCMdocs/blob/master/sccm/core/servers/deploy/configure/boundary-groups>

NEW QUESTION 51

You have a deployment of System Center Configuration Manager (Current Branch). You currently deploy all Windows updates by using Configuration Manager. You pilot the deployment of Click-to-Run for Office 365 and discover that clients are downloading updates for Office 365 from the Internet. You need to manage the updates for Click-to-Run for Office 365. What should you do?

- A. Create an automatic deployment rule (ADR) for software updates.
- B. From Default Client Settings, click Software Updates and set Enable installation of Express installation files on clients to Yes.
- C. Create a deployment package for software updates.
- D. From Default Client Settings, click Software Updates and set Enable management of the Office 365 Client Agent to Yes.

Answer: C

Explanation:

References: <https://docs.microsoft.com/en-us/sccm/core/servers/deploy/configure/deploy-and-manage-content>

NEW QUESTION 56

You have a deployment of System Center Configuration Manager (Current Branch) that you use to manage devices on the corporate network. You need to ensure that you can deploy software to Configuration Manager clients on the Internet. What should you deploy?

- A. a management point on a perimeter network and a cloud management gateway in Microsoft Azure
- B. a cloud-based distribution point in Microsoft Azure and the Microsoft Operations Management Suite (OMS) connector
- C. a distribution point and a management point on a perimeter network
- D. a cloud management gateway and the Microsoft Azure Service for Cloud Management in Microsoft Azure

Answer: A

Explanation:

References: <https://docs.microsoft.com/en-us/sccm/core/clients/manage/cmgy/plan-cloud-management-gateway>

NEW QUESTION 58

You have a deployment of System Center Configuration Manager (Current Branch) that you use to manage devices on the corporate network. You need to ensure that you can deploy software to Configuration Manager clients on the Internet. What should you deploy?

- A. a cloud-based distribution point in Microsoft Azure and the Microsoft Operations Management Suite (OMS) connector
- B. a management point and a service connection point in a perimeter network.
- C. a cloud-based distribution point and a cloud management gateway in Microsoft Azure
- D. a cloud-based distribution point in Microsoft Azure and a Microsoft Intune subscription

Answer: C

Explanation:

References: <https://docs.microsoft.com/en-us/sccm/core/clients/manage/cmgy/plan-cloud-management-gateway>

NEW QUESTION 61

You have a deployment of System Center Configuration Manager (Current Branch). Your company has offices in Paris and Boston. All client computers run Windows 7.

You plan to migrate all the computers to Windows 10 by using task sequences in Configuration Manager. All the hard drives will be reformatted during the migration.

You need to meet the following requirements:

- ▶ For the computers in the Boston office, the user data and settings must be retained.
- ▶ For the computers in the Paris office, users must be able to select which applications to install.

What should you use in each office? To answer, select the appropriate options in the answer area.

NOTE: Each correct selection is worth one point.

Answer Area

Boston:

An automatic deployment rule (ADR)
The Active Directory Migration Tool (ADMT)
The Microsoft Deploymetn Toolkit (MDT)
The user State Migration Tool (USMT)

Paris:

An automatic deployment rule (ADR)
The Active Directory Migration Tool (ADMT)
The Microsoft Deploymetn Toolkit (MDT)
The user State Migration Tool (USMT)

- A. Mastered
- B. Not Mastered

Answer: A

Explanation:
References: <https://docs.microsoft.com/en-us/windows/deployment/windows-10-deployment-scenarios>

NEW QUESTION 62

You have a deployment of System Center Configuration Manager (Current Branch). Configuration Manager includes the collections shown in the following table.

Collection name	Members
Collection1	Computer1,Computer2,
Collection2	Computer2,Computer3
Collection3	Computer3

Configuration Manager has the following antimalware policies defined as shown in the following table.

Policy name	Priority	Deployed to	Scheduled scan time
Default Client Antimalware Policy	10,000	Not applicable	02:00
Settings1	2	Collection1	04:00
Settings2	3	Collection1	12:00
Settings3	1	Collection2	Not applicable
Settings4	4	Collection3	Not applicable

When are the scheduled scan times for Computer1, Computer2, and Computer3? To answer, select the appropriate options in the answer area.
NOTE: Each correct selection is worth one point.

Answer Area

Computer1:

02.00
04.00
12.00
Never

Computer2:

02.00
04.00
12.00
Never

Computer3:

02.00
04.00
12.00
Never

- A. Mastered
- B. Not Mastered

Answer: A

Explanation:

References: <https://technet.microsoft.com/en-us/library/hh508785.aspx>

NEW QUESTION 63

You have a device collection named Collection1.
Currently, you use an automated deployment rule (ADR) to deploy updates as quickly as possible to Collection1.
You need to ensure that the updates are installed during a predefined period of time. The solution must affect the updates only.
What should you do?

- A. From the Membership Rules tab of Collection1, schedule an incremental update of the collection.
- B. From the Maintenance Windows tab of Collection1, create a new schedule that applies to all deployments.
- C. From the Membership Rules tab of Collection1, schedule a full update of the collection.
- D. From the Maintenance Windows tab of Collection1, create a new schedule that applies to software updates only.

Answer: D

Explanation:

References: <https://technet.microsoft.com/en-us/library/hh508762.aspx>

NEW QUESTION 65

You have a System Center Configuration Manager (Current Branch) hierarchy that contains a single primary server named cm01.contoso.corp.
You have a Web Application Proxy that presents the management point and the distribution point to the Internet as sccm.contoso.com.
You have a user who has a client computer that runs Windows 10. The user currently works at a customer site. The user has access to the Internet but cannot access the customer's corporate network.
You discover that the Configuration Manager client on the computer has an issue. You need to reinstall the Configuration Manager client on the computer.
Which command should you run? To answer, select the appropriate options in the answer area. NOTE: Each correct selection is worth one point.

Answer Area

<div><div></div><div>ccmsetup.exe</div><div>ccmsetupcmd.exe</div><div>client.msi</div></div>	<div><div></div><div>/mp:sccm.contoso.com</div><div>/noservice CCMHTTPSPORT=443</div><div>DNSSUFFIX=contoso.com</div><div>SMSSITECODE=AUTO</div></div> <div>/UsePKICert /noCRLCheck</div>
--	---

- A. Mastered
- B. Not Mastered

Answer: A

Explanation:

References: <https://docs.microsoft.com/en-us/sccm/core/clients/deploy/about-client-installation-properties>

NEW QUESTION 69

Your network contains an Active Directory forest. The forest contains an enterprise certification authority (CA) named CA01. The CRL distribution point (CDP) is configured to use LDAP.
You have a System Center Configuration Manager server named CM01.
You configure on-premises mobile device management (MDM). You have a domain-joined computer that runs Windows 10. You successfully enroll the computer into MDM.
You need to ensure that you can enroll a non-domain-joined computer into MDM. What should you do? To answer, select the appropriate options in the answer area. NOTE: Each correct selection is worth one point.

Answer Area

on the client computer:	<div><div></div><div>create an inbound firewall rule for CA01.</div><div>Create an inbound firewall rule for CM01.</div><div>Install a SSL certificate from a public CA</div><div>Install a trusted root certificate form CA01</div></div>
on CA01:	<div><div></div><div>Modify the CDP.</div><div>Create a new certificate template</div><div>Install the Online Responder service</div><div>Modify the Authority Information Access (AIA) extension.</div></div>

- A. Mastered
- B. Not Mastered

Answer: A

Explanation:

References:

<https://docs.microsoft.com/en-us/sccm/mdm/get-started/set-up-device-enrollment-on-premises-mdm>

https://docs.microsoft.com/en-us/sccm/mdm/get-started/set-up-certificates-on-premises-mdm#bkmk_exportCert

NEW QUESTION 73

You have a deployment of System Center Configuration Manager (Current Branch). You configure hybrid mobile device management (MDM).

Your company allows users to use their personal devices to access corporate data.

A user named User1 has a personal tablet that runs Windows 10. The tablet is enrolled in Microsoft Intune. User1 leaves the company.

You plan to perform a selective wipe of the tablet. What will be deleted from the tablet?

- A. all the apps that are installed from the Microsoft Store for Business
- B. all the files located in %ProgramData%\Package Cache
- C. all the user profiles
- D. all the files located in %USERPROFILE%\AppData\Roaming

Answer: A

Explanation:

References: <https://docs.microsoft.com/en-us/sccm/mdm/deploy-use/wipe-lock-reset-devices>

NEW QUESTION 75

You have a deployment of System Center Configuration Manager (Current Branch).

Your company opens a new office. All the client computers in the new office use IPv6 addresses only. The IPv6 address of one of the computers is

2001:3823:2c50:6a39:e976:b0eb:93f7:fb41.

You need to configure an IPv6 boundary in Configuration Manager for the new office. What should you use to configure the boundary?

- A. 2001:3823:2c50:6a39
- B. ::93f7:fb41
- C. 2001:3823::
- D. e976:b0eb:93f7:fb41

Answer: A

Explanation:

References:

<https://docs.microsoft.com/en-us/sccm/core/servers/deploy/configure/boundaries> <https://networklessons.com/ipv6/how-to-find-ipv6-prefix/>

NEW QUESTION 76

Note: This question is part of a series of questions that present the same scenario. Each question in the series contains a unique solution that might meet the stated goals. Some question sets might have more than one correct solution, while others might not have a correct solution.

After you answer a question in this section, you will NOT be able to return to it. As a result, these questions will not appear in the review screen.

You have a deployment of System Center Configuration Manager (Current Branch). You configure hybrid mobile device management (MDM).

You enroll several Apple iOS devices and deploy compliance policies. One of the devices is marked as noncompliant.

You need to retrieve the logs from the device.

Solution: You install the Apple Configurator tool on a Mac computer. You connect the device to the computer. From All Devices, you double-click the device to review and save the log file.

Does this meet the goal?

- A. Yes
- B. No

Answer: A

NEW QUESTION 79

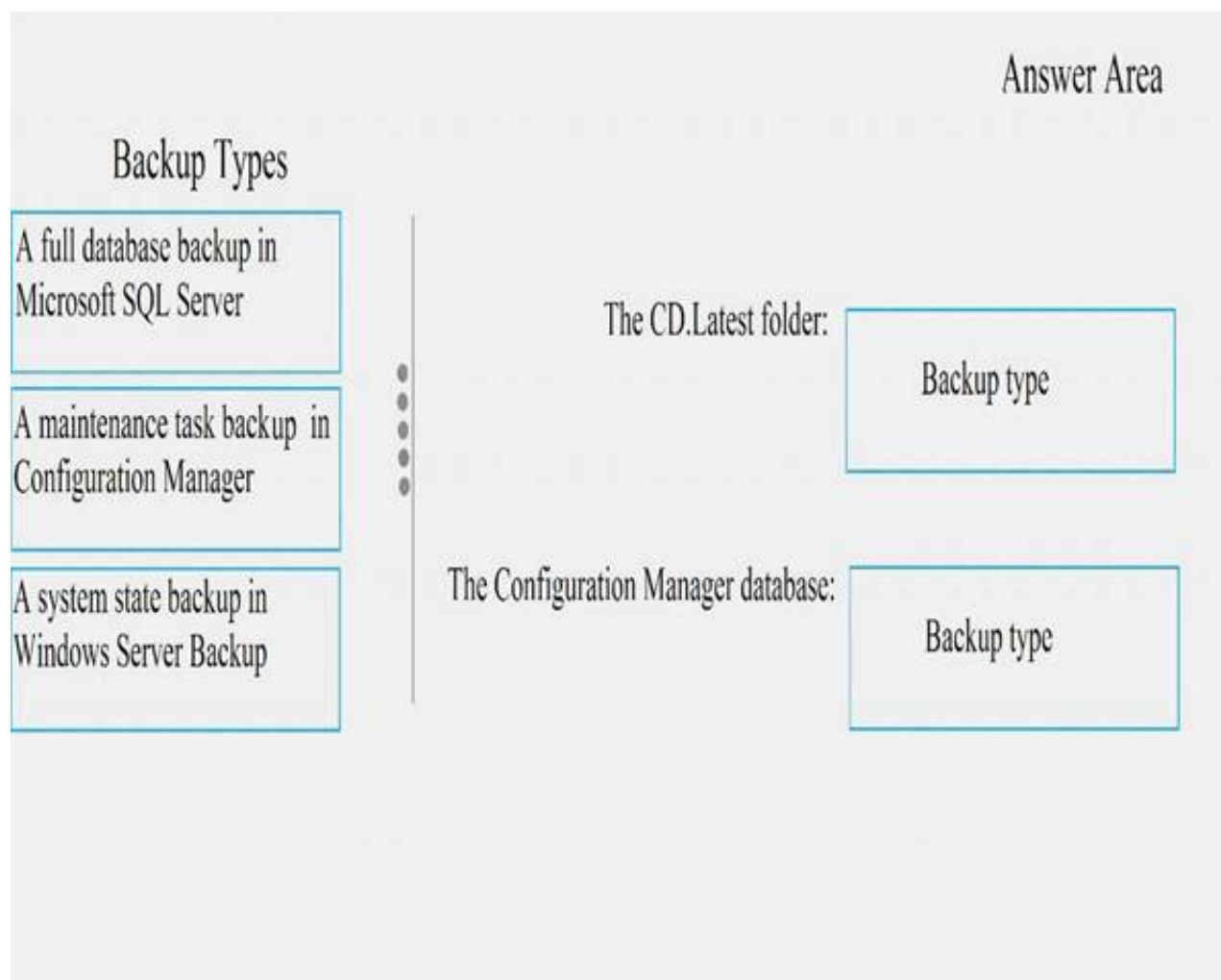
You have a deployment of System Center Configuration Manager (Current Branch).

You need to back up the CD.Latest folder and the Configuration Manager database. The solution must meet the following requirements:

- ☒ Compress the backup of the Configuration Manager database.
- ☒ Ensure that the backups can be restored to a consistent state.

Which type of backups should you use? To answer, drag the appropriate options to the correct content types. Backup type may be used once, more than once, or not at all. You may need to drag the split bar between panes or scroll to view content.

NOTE: Each correct selection is worth one point.



- A. Mastered
- B. Not Mastered

Answer: A

Explanation:

References: <https://docs.microsoft.com/en-us/sccm/protect/understand/backup-and-recovery>

NEW QUESTION 81

Note: This question is part of a series of questions that present the same scenario. Each question in the series contains a unique solution that might meet the stated goals. Some question sets might have more than one correct solution, while others might not have a correct solution.

After you answer a question in this section, you will NOT be able to return to it. As a result, these questions will not appear in the review screen.

You have a deployment of System Center Configuration Manager (Current Branch). You configure hybrid mobile device management (MDM).

You enroll several Apple iOS devices and deploy compliance policies. One of the devices is marked as noncompliant.

You need to retrieve the logs from the device.

Solution: You open the Company Portal app, shake the device, and then tap Send Diagnostic Report when the diagnostics alert appears.

Does this meet the goal?

- A. Yes
- B. No

Answer: B

NEW QUESTION 82

Note: This question is part of a series of questions that present the same scenario. Each question in the series contains a unique solution that might meet the stated goals. Some question sets might have more than one correct solution, while others might not have a correct solution.

After you answer a question in this section, you will NOT be able to return to it. As a result, these questions will not appear in the review screen.

Your company uses a network ID of 10.0.0.0/8.

The company opens a new office that uses a network ID of 10.La0.0/16. The office has three floors. Each floor has a VLAN. The network ID of each VLAN is 10.5.10.0/24, 10.5.20.0/24, and 10.5.30.0/24.

You create a distribution point for the new office.

You plan to distribute content to clients in the new office from the new distribution point. You need to create a boundary for the new office.

Solution: Create an IP address range boundary from 10.5.1.1 to 10.5.255.255. Does this meet the goal?

- A. Yes
- B. No

Answer: B

NEW QUESTION 83

Your network contains an Active Directory forest named adatum.com.

A stand-alone primary System Center Configuration Manager (Current Branch) site named S01 is deployed to adatum.com.

The Configuration Manager deployment includes the servers shown in the following table.

Server name	Configuration
Server1	Configuration Manager
Server2	Microsoft SQL Server 2016 Service Pack 1 (SP1)

You perform regular site backups by using Configuration Manager.

You have a test environment that contains the servers shown in the following table.

Server name	Configuration
ServerA	Member server
ServerB	SQL Server 2016 SP1

The test environment has a domain controller that hosts a copy of the adatum.com forest. You plan to recover Configuration Manager in the test environment.

You need to prepare the test environment to support the planned recovery.

How should you complete each action? To answer, select the appropriate options in the answer area. NOTE: Each correct selection is worth one point.

Configuration Manager can access the SQL server, you must:

- Run the setspn.exe command for ServerA
- Run the setspn.exe command for ServerB
- Add the computer account of ServerA to the local Administrators group on ServerB
- Add the computer account of ServerB to the local Administrators group on ServerA

Before you install Configuration Manager, you must first:

- Rename ServerA and ServerB
- Run the extadsch.exe command
- Create an empty database named CM_501
- Run the Restore-DscConfiguration cmdlet

- A. Mastered
- B. Not Mastered

Answer: A

Explanation:

<https://docs.microsoft.com/en-us/sql/database-engine/configure-windows/register-a-service-principal-name-for-> <https://docs.microsoft.com/en-us/sccm/core/get-started/set-up-your-lab>

NEW QUESTION 87

You have a collection of devices that run an application named SaleApp1.

Every week, the sales manager publishes an updated price list to a file share. To use the new price list, the list must be copied to the application folder on the devices.

You need to ensure that SalesApp1 receives a new price list weekly. What should you configure?

- A. a weekly maintenance window for the target collection
- B. a weekly schedule for the Update Application Available Targeting maintenance task
- C. a weekly content validation schedule on the distribution point
- D. a package that has a weekly recurrence schedule

Answer: D

NEW QUESTION 90

Note: This question is part of a series of questions that present the same scenario. Each question in the series contains a unique solution that might meet the stated goals. Some question sets might have more than one correct solution, while others might not have a correct solution.

After you answer a question in this section, you will NOT be able to return to it. As a result, these questions will not appear in the review screen.

You deploy the first primary site server to your organization. Discovery is not configured. You need to deploy the Configuration Manager client to five client computers in a workgroup. Solution: You manually install the client on the computers.

Does this meet the goal?

- A. Yes
- B. No

Answer: A

Explanation:

References: <https://docs.microsoft.com/en-us/sccm/core/clients/deploy/deploy-clients-to-windows-computers>

NEW QUESTION 93

You have a deployment of System Center Configuration Manager (Current Branch). You add the cloud management gateway connector point to the deployment. Which site system role can be configured to receive the traffic from the cloud management gateway?

- A. Software update point
- B. Asset Intelligence synchronization point
- C. Service connection point
- D. Distribution point

Answer: A

Explanation:

<https://www.systemcenterdudes.com/how-to-setup-an-sccm-cloud-management-gateway/>

NEW QUESTION 95

You have a deployment of System Center Configuration Manager (Current Branch).

You deploy several Microsoft Store for Business apps to client computers by using Configuration Manager. You purchase a new Microsoft Store for Business app named App1. App1 is licensed for offline use.

You need to ensure that you can deploy App1 immediately by using Configuration Manager. What should you do?

- A. From the Configuration Manager console, synchronize the Windows Store for Business.
- B. From the Microsoft Azure portal, add App1 to Azure Active Directory.
- C. From the Configuration Manager console, run the Azure Services Wizard.
- D. From Microsoft Intune in the Microsoft Azure portal, add App1 to Intune.

Answer: A

Explanation:

References: <https://www.petervanderwoude.nl/post/windows-store-for-business-synchronized-with-configmgr/>

NEW QUESTION 98

You have a deployment of System Center Configuration Manager (Current Branch).

You discover that some users have an executable file named App1.exe configured to run at start up. You need to identify which computers have App1.exe configured to run at start up.

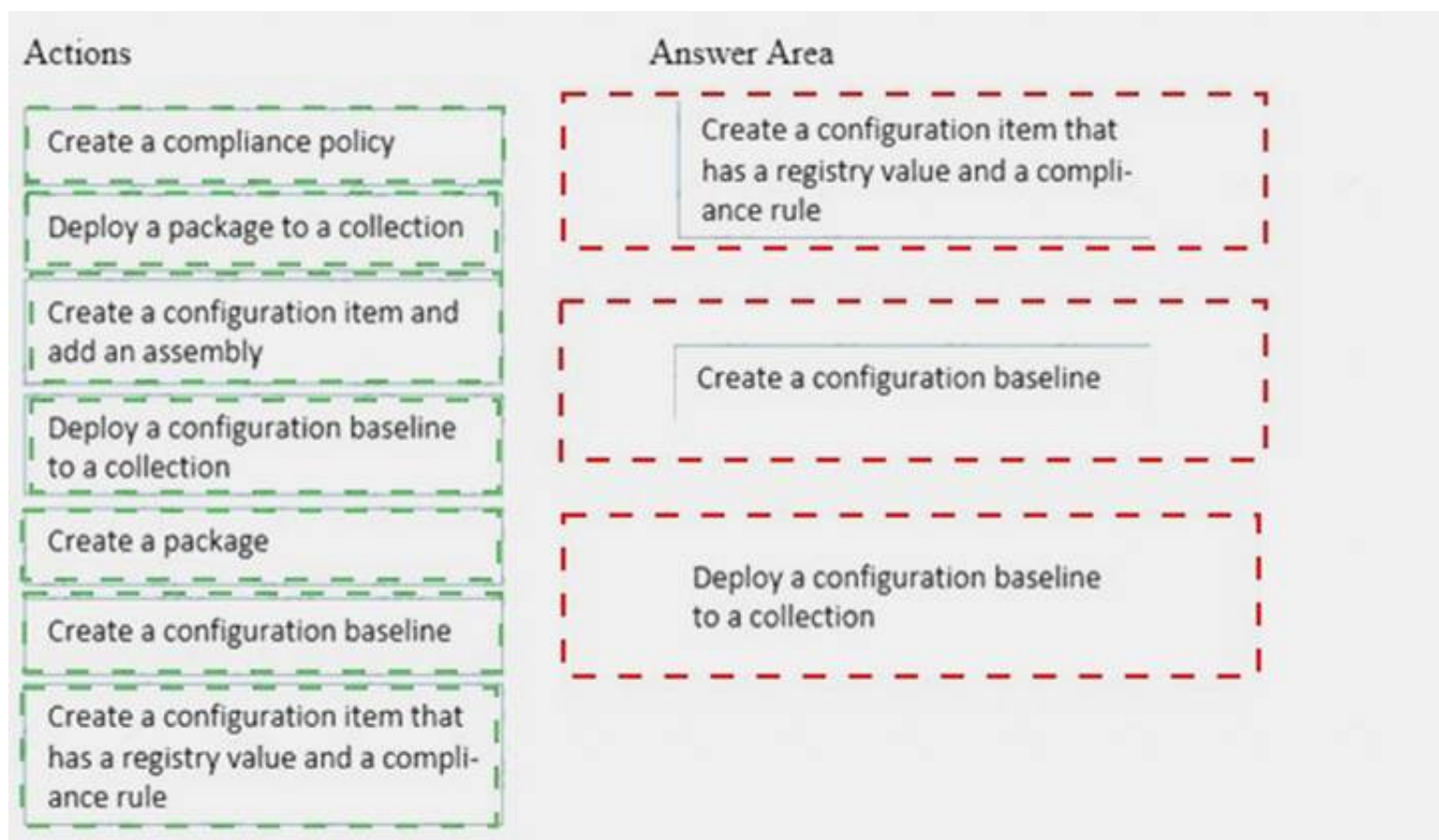
Which three actions should you perform in sequence? To answer, move the appropriate actions from the list of actions to the answer area and arrange them in the correct order.

Actions	Answer Area
Create a compliance policy	
Deploy a package to a collection	
Create a configuration item and add an assembly	
Deploy a configuration baseline to a collection	
Create a package	
Create a configuration baseline	
Create a configuration item that has a registry value and a compliance rule	

- A. Mastered
- B. Not Mastered

Answer: A

Explanation:



NEW QUESTION 102

Note: This question is part of a series of questions that present the same scenario. Each question in the series contains a unique solution that might meet the stated goals. Some question sets might have more than one correct solution, while others might not have a correct solution.

After you answer a question in this section, you will NOT be able to return to it. As a result, these questions will not appear in the review screen.

Your company uses a network ID of 10.0.0.0/8.

The company opens a new office that uses a network ID of 10.5.0.0/16. The office has three floors. Each floor has a VLAN. The network ID of each VLAN is 10.5.10.0/24, 10.5.20.0/24, and 10.5.30.0/24.

You create a distribution point for the new office.

You need to ensure that the clients in the new office obtain content from the new distribution point. Solution: Create an IP address range boundary from 10.5.0.0/16.

Does this meet the goal?

- A. Yes
- B. No

Answer: B

NEW QUESTION 106

You have a deployment of System Center Configuration Manager (Current Branch).

You need to ensure that the CIO of your company automatically receives the Antimalware overall status and history report by email every week.

What should you do first?

- A. Configure the SMTP Settings in Microsoft SQL Server Reporting Services (SSRS).
- B. Create a subscription in Configuration Manager.
- C. Configure the execution account for Microsoft SQL Server Reporting Services (SSRS).
- D. Configure the Subscription Schedule in Configuration Manager.

Answer: B

Explanation:

References:

<https://github.com/MicrosoftDocs/SCCMdocs/blob/master/sccm/core/servers/manage/operations-and-maintenan>

NEW QUESTION 108

Note: This question is part of a series of questions that use the same scenario. For your convenience, the scenario is repeated in each question. Each question presents a different goal and answer choices, but the text of the scenario is exactly the same in each question in this series.

Start of repeated scenario.

Your network contains an Active directory forest named adatum.com.

All client computers run Windows 10 Enterprise. All the computers are named by using the name of their respective department and an incremental three-digit number. For example, the first computer in the sales department is named Sales001.

Several managers use tablets that run Windows 10 and have 3 GB of RAM. All other client computers have at least 8 GB RAM.

Adatum.com is synchronized to Microsoft Azure Active Directory. Your company implements the Microsoft Store for Business.

You have a deployment of System Center Configuration Manager (Current Branch) that has discovery configured. All the client computers have the Configuration Manager client installed.

The company uses the applications shown in the following table.

Application Name	Description
App1	A Microsoft Application Virtualization (APP-V) virtual application
App2	An app that the company purchased from the Microsoft Store for Business and is licensed for offline use
App3	A 64-bit application that is deployed to all the client computers
SalesAppLite	An application used by users in the sale department on computers that have 3 GB of Ram or less
SalesAppFull	An application used by users in the sale department on computers that have more than 3 GB of Ram.

The company identifies the following requirements for software deployments:

- ▶ View the Upgrade Readiness data of all the client computers.
- ▶ Deploy App1 to the client computers in the marketing department.
- ▶ Deploy App2 to the client computers in the human resources (HR) department.
- ▶ Monitor the usage of App3.
- ▶ Deploy SalesAppLite to sales department computers that have 3 GB of RAM or less.
- ▶ Deploy SalesAppFull to sales department computers that have more than 3 GB of RAM.

You create a cloud-based distribution point that has a public name of d1594d4527614a09b934d470. End of repeated scenario.

You need to create the Upgrade Readiness report.

Which Group Policy object (GPO) setting should you configure?

- A. Diagnostics: Configure Scenario Execution Level
- B. Specify intranet Microsoft update service location
- C. Configure the Commercial ID
- D. Configure forwarder resource usage
- E. Audit Other Account Logon Events

Answer: C

Explanation:

References: <https://www.anoopcnaair.com/methods-to-configure-telemetry-for-upgrade-readiness/>

NEW QUESTION 111

You have a deployment of System Center Configuration Manager (Current Branch). You have the collections shown in the following table.

Collection name	Members
Collection1	Computer1,Computer2,Computer3
Collection2	Computer1,Computer4,Computer6
Collection3	Computer2,Computer5,Computer7

You create a new collection that has the following configurations:

- ▶ Collection name: Collection4
- ▶ Limiting collection: Collection1
- ▶ Include Collections rule: Collection2
- ▶ Exclude Collections rule: Collection3

What will Collection4 contain?

- A. Computer1, Computer2, and Computer3 only
- B. Computer1, Computer4, and Computer6 only
- C. Computer1 only
- D. Computer1, Computer2, Computer3, Computer4, and Computer6

Answer: D

Explanation:

References: <https://technet.microsoft.com/en-us/library/gg712295.aspx>

NEW QUESTION 116

You deploy the System Center Configuration Manager client to all domain-joined computers that run Windows.

From Resource Explorer, you view the hardware and software inventory information of the computers. When you run the Hardware 07A – USB Devices by Manufacturer report, the report does not produce any results.

What should you do to ensure that the report contains results?

- A. Enable Asset Intelligence hardware inventory reporting classes.
- B. Enable software metering on the clients.

- C. Configure the Summarize Installed Software Data maintenance task.
- D. Configure an Asset Intelligence synchronization point.

Answer: A

Explanation:

References:

<https://docs.microsoft.com/en-us/sccm/core/clients/manage/asset-intelligence/introduction-to-asset-intelligence> <https://docs.microsoft.com/en-us/sccm/core/clients/manage/asset-intelligence/configuring-asset-intelligence>

NEW QUESTION 121

Note: This question is part of a series of questions that present the same scenario. Each question in the series contains a unique solution that might meet the stated goals. Some question sets might have more than one correct solution, while others might not have a correct solution.

After you answer a question in this section, you will NOT be able to return to it. As a result, these questions will not appear in the review screen.

You have a deployment of System Center Configuration Manager (Current Branch). You configure a cloud management gateway for Configuration Manager.

You have a client computer that is currently on the corporate network.

You need to force the computer to get the location of the cloud management gateway immediately. Solution: You run the Get-cloudDistributionPoint cmdlet.

Does this meet the goal?

- A. Yes
- B. No

Answer: B

NEW QUESTION 125

You have a deployment of System Center Configuration Manager (Current Branch).

You need to ensure that help desk users can use the Configuration Manager console to remotely control Configuration Manager clients.

Which two actions should you perform? Each correct answer presents part of the solution. NOTE: Each correct selection is worth one point.

- A. Add the help desk users to the local Administrators group on each client computer.
- B. Enable Remote Desktop on the client computers.
- C. Configure a client settings policy.
- D. Allow connections to TCP port 2701 on the client computers.
- E. Allow connections to TCP port 3389 on the client computers.

Answer: CE

Explanation:

References:

<https://docs.microsoft.com/en-us/sccm/core/clients/manage/remote-control/configuring-remote-control> <https://technet.microsoft.com/en-us/library/bb632618.aspx>

NEW QUESTION 128

Note: This question is part of a series of questions that use the same scenario. For your convenience, the scenario is repeated in each question. Each question presents a different goal and answer choices, but the text of the scenario is exactly the same in each question in this series.

Start of repeated scenario.

You work for a company named ADatum Corporation.

The ADatum network contains an Active Directory domain named adatum.com.

You have a partner company named Contoso, Ltd. The Contoso network contains an Active Directory domain named adatum.com.

All the client computers at both companies run Windows 10.

Each company has a deployment of System Center Configuration Manager (Current Branch). ADatum has sales and IT departments. ADatum has a collection for each department.

Contoso has research, marketing, and human resources (HR) departments. Contoso has a collection for each department.

ADatum purchases Contoso.

You configure on-premises mobile device management (MDM) in adatum.com. You enroll the client computers in the IT department into on-premises MDM.

You configure hybrid MDM in contoso.com. End of repeated scenario.

You need to ensure that when the users at Contoso enroll into MDM, they accept the usage policy of Contoso. What should you do?

- A. From Microsoft Intune in the Microsoft Azure portal, click Device compliance and configure the Compliance policy settings.
- B. From the Configuration Manager console, open the Assets and Compliance workspace and configure the terms and conditions.
- C. From Microsoft Intune in the Microsoft Azure portal, click Device enrollment and configure the terms and conditions.
- D. From the Configuration manager console, open the Assets and Compliance workspace and configure a compliance policy.

Answer: B

Explanation:

References: <https://docs.microsoft.com/en-us/sccm/mdm/deploy-use/terms-and-conditions>

NEW QUESTION 132

.....

THANKS FOR TRYING THE DEMO OF OUR PRODUCT

Visit Our Site to Purchase the Full Set of Actual 70-703 Exam Questions With Answers.

We Also Provide Practice Exam Software That Simulates Real Exam Environment And Has Many Self-Assessment Features. Order the 70-703 Product From:

<https://www.2passeasy.com/dumps/70-703/>

Money Back Guarantee

70-703 Practice Exam Features:

- * 70-703 Questions and Answers Updated Frequently
- * 70-703 Practice Questions Verified by Expert Senior Certified Staff
- * 70-703 Most Realistic Questions that Guarantee you a Pass on Your FirstTry
- * 70-703 Practice Test Questions in Multiple Choice Formats and Updatesfor 1 Year