



Microsoft

Exam Questions 70-703

Administering Microsoft System Center Configuration Manager and Cloud Services Integration

NEW QUESTION 1

You have a deployment of System Center Configuration Manager (Current Branch) that contains a primary site server named CM01. You have a line-of-business application named App1 that is a Microsoft Application Virtualization (App-V) package. The media for App1 is in the D:\Sources\AppV\App1 folder on CM01. The D:\Sources folder is shared as Sources\$. You need to create a new Configuration Manager application for the deployment of App1. How should you complete the command? To answer, select the appropriate options in the answer area. NOTE: Each correct selection is worth one point.

Answer Area

Add-CMAppv5XDeploymentType

Get-CMApplication

Get-CMPackage

New-CMApplication

New-CMPackage

New-CMProgram

- name "App1"

Add-CMAppv5XDeploymentType

Get-CMApplication

Get-CMPackage

New-CMApplication

New-CMPackage

New-CMProgram

-ContentLocation \\CM01\source\$\Appv\app1

-DeploymentTypeName "Install App1"

Answer:

Explanation: References:
<https://docs.microsoft.com/en-us/powershell/module/configurationmanager/new-cmapplication?view=sccm-ps> <https://docs.microsoft.com/en-us/powershell/module/configurationmanager/add-cmappv5xdeploymenttype?view=sccm-ps>

NEW QUESTION 2

Note: This question is part of a series of questions that use the same scenario. For your convenience, the scenario is repeated in each question. Each question presents a different goal and answer choices, but the text of the scenario is exactly the same in each question in this series.

Start of repeated scenario.

Your network contains an Active directory forest named adatum.com.

All client computers run Windows 10 Enterprise. All the computers are named by using the name of their respective department and an incremental three-digit number. For example, the first computer in the sales department is named Sales001.

Several managers use tablets that run Windows 10 and have 3 GB of RAM. All other client computers have at least 8 GB RAM.

Adatum.com is synchronized to Microsoft Azure Active Directory. Your company implements the Microsoft Store for Business.

You have a deployment of System Center Configuration Manager (Current Branch) that has discovery configured. All the client computers have the Configuration Manager client installed.

The company uses the applications shown in the following table.

Application Name	Description
App1	A Microsoft Application Virtualization (APP-V) virtual application
App2	An app that the company purchased from the Microsoft Store for Business and is licensed for offline use
App3	A 64-bit application that is deployed to all the client computers
SalesAppLite	An application used by users in the sale department on computers that have 3 GB of Ram or less
SalesAppFull	An application used by users in the sale department on computers that have more than 3 GB of Ram.

The company identifies the following requirements for software deployments:

- ▶ View the Upgrade Readiness data of all the client computers.
- ▶ Deploy App1 to the client computers in the marketing department.
- ▶ Deploy App2 to the client computers in the human resources (HR) department.
- ▶ Monitor the usage of App3.
- ▶ Deploy SalesAppLite to sales department computers that have 3 GB of RAM or less.
- ▶ Deploy SalesAppFull to sales department computers that have more than 3 GB of RAM.

You create a cloud-based distribution point that has a public name of d1594d4527614a09b934d470. End of repeated scenario.

You need to ensure that you can deploy App1 to the marketing department computers. What should you do?

- A. Download the App-V client and install the client by using a Group Policy object (GPO).
- B. Sequence App1 by using the App-V Sequencer.
- C. Download the App-V client and deploy the client by using a Configuration Manager application.
- D. Deploy a Group Policy object (GPO) that enables the App-V client.

Answer: C

Explanation: References:

<https://docs.microsoft.com/en-us/windows/application-management/app-v/appv-enable-the-app-v-desktop-client>

NEW QUESTION 3

Note: This question is part of a series of questions that present the same scenario. Each question in the series contains a unique solution that might meet the stated goals. Some question sets might have more than one correct solution, while others might not have a correct solution.

After you answer a question in this section, you will NOT be able to return to it. As a result, these questions will not appear in the review screen.

You plan to deploy System Center Configuration Manager (Current Branch) by using an initial pilot deployment

The pilot deployment will contain five computers that run Windows 10.

You need to deploy the Configuration Manager client to the five computers only. Solution: From each client, you run CMEnroll.exe.

Does this meet the goal?

- A. Yes
- B. No

Answer: B

NEW QUESTION 4

Note: This question is part of a series of questions that present the same scenario. Each question in the series contains a unique solution that might meet the stated goals. Some question sets might have more than one correct solution, while others might not have a correct solution.

After you answer a question in this section, you will NOT be able to return to it. As a result, these questions will not appear in the review screen.

You need to deploy the Configuration Manager client to the five computers only.

Solution: From the Configuration Manager console, you create a custom package. Deploy the package to the All Unknown Computers collection.

Does this meet the goal?

- A. Yes
- B. No

Answer: A

NEW QUESTION 5

You have a deployment of System Center Configuration Manager (Current Branch). 5,000 computers have the Configuration Manager client installed.

You need to deploy an online-licensed app named App1 from the Microsoft Store for Business to all Configuration Manager clients.

What should you do first?

- A. From the Configuration Manager console, launch the Microsoft Azure Services Wizard and select Microsoft Store for Business.
- B. From the Microsoft Store for Business portal, create a new AutoPilot deployment profile.
- C. From the Microsoft Store for Business portal, invite a line-of-business (LOB) publisher to your organization.
- D. From the Configuration Manager console, create a new collection.

Answer: D

NEW QUESTION 6

You configure a task sequence in System Center Configuration Manager.

You need to ensure that the support department can see the progress of the task sequence only. What should you do?

- A. Assign the db_datareader role to the users in the support department.
- B. Create a monitoring query based on a task sequence.
- C. Create a status message query.
- D. Create a monitoring query that is limited to a collection.

Answer: C

Explanation: References:

<http://www.sccconfigmgr.com/2014/02/27/monitor-osd-with-status-message-queries-in-configmgr-2012/>

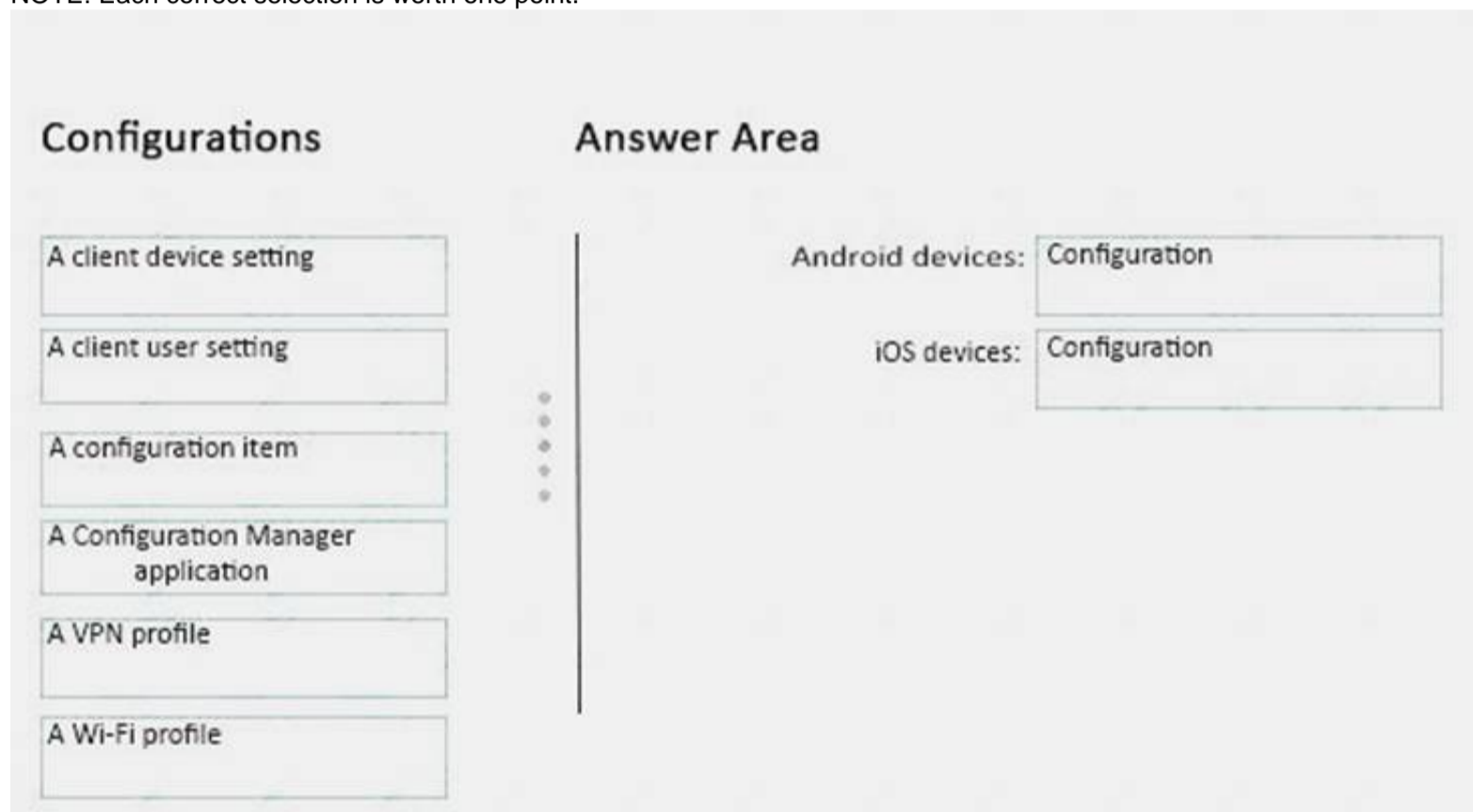
NEW QUESTION 7

You have a deployment of System Center Configuration Manager (Current Branch). You configure hybrid mobile device management (MDM).

You use Configuration Manager to manage Apple iOS and Android devices. You need to prevent users of the devices from incurring roaming data charges.

What should you configure for each device? To answer, drag the appropriate configurations to the correct devices. Each configuration may be used once, more than once, or not at all. You may need to drag the split bar between panes or scroll to view content.

NOTE: Each correct selection is worth one point.



Answer:

Explanation: References:

<https://docs.microsoft.com/en-us/sccm/mdm/deploy-use/create-configuration-items-for-android-and-samsung-kn> <https://docs.microsoft.com/en-us/sccm/mdm/deploy-use/create-configuration-items-for-ios-and-mac-os-x-device>

NEW QUESTION 8

Note: This question is part of a series of questions that present the same scenario. Each question in the series contains a unique solution that might meet the stated goals. Some question sets might have more than one correct solution, while others might not have a correct solution.

After you answer a question in this section, you will NOT be able to return to it. As a result, these questions will not appear in the review screen.

You deploy the first primary site server to your organization. Discovery is not configured. You need to deploy the Configuration Manager client to five client computers in a workgroup. Solution: You deploy the client by using a software deployment.

Does this meet the goal?

- A. Yes
- B. No

Answer: B

Explanation: References: <https://docs.microsoft.com/en-us/sccm/core/clients/deploy/deploy-clients-to-windows-computers>

NEW QUESTION 9

You have a deployment of System Center Configuration Manager (Current Branch). You need to create a task sequence to deploy Windows 10.

Which two components should you include in the task sequence? Each correct answer presents part of the solution.

NOTE: Each correct selection is worth one point.

- A. a driver package
- B. an operating system image
- C. software updates
- D. a boot image

Answer: BD

Explanation: References:

<https://docs.microsoft.com/en-us/sccm/osd/deploy-use/create-a-task-sequence-to-install-an-operating-system>

NEW QUESTION 10

Note: This question is part of a series of questions that use the same scenario. For your convenience, the scenario is repeated in each question. Each question presents a different goal and answer choices, but the text of the scenario is exactly the same in each question in this series.

Start of repeated scenario.

You work for a company named ADatum Corporation.

The ADatum network contains an Active Directory domain named adatum.com.

You have a partner company named Contoso, Ltd. The Contoso network contains an Active Directory domain named adatum.com.

All the client computers at both companies run Windows 10.

Each company has a deployment of System Center Configuration Manager (Current Branch). ADatum has sales and IT departments. ADatum has a collection for each department.

Contoso has research, marketing, and human resources (HR) departments. Contoso has a collection for each department.

ADatum purchases Contoso.

You configure on-premises mobile device management (MDM) in adatum.com. You enroll the client computers in the IT department into on-premises MDM.

You configure hybrid MDM in contoso.com. End of repeated scenario.

You need to view a detailed hardware inventory of an IT department computer that is currently offline. Which tool should you use?

- A. Resource Explorer
- B. Device Manager
- C. Microsoft Intune in the Microsoft Azure portal
- D. the Microsoft Azure portal

Answer: A

Explanation: References: <https://technet.microsoft.com/en-us/library/gg712311.aspx>

NEW QUESTION 10

Note: This question is part of a series of questions that use the same scenario. For your convenience, the scenario is repeated in each question. Each question presents a different goal and answer choices, but the text of the scenario is exactly the same in each question in this series.

Start of repeated scenario

Your network contains an Active directory forest named adatum.com.

All client computers run Windows 10 Enterprise, Semi-Annual Channel (Targeted). All the computers are named by using the name of their respective department and an incremental three-digit number. For example, the first computer in the sales department is named Sales001.

Several managers use tablets that run Windows 10 and have 3 GB of RAM. All other client computers have at least 8 GB RAM.

Adatum.com is synchronized to Microsoft Azure Active Directory. Your company implements the Microsoft Store for Business.

You have a deployment of System Center Configuration Manager (Current Branch) that has discovery configured. All the client computers have the Configuration Manager client installed.

The company uses the applications shown in the following table.

Application Name	Description
App1	A Microsoft Application Virtualization (APP-V) virtual application
App2	An app that the company purchased from the Microsoft Store for Business and is licensed for offline use
App3	A 64-bit application that is deployed to all the client computers
SalesAppLite	An application used by users in the sale department on computers that have 3 GB of Ram or less
SalesAppFull	An application used by users in the sale department on computers that have more than 3 GB of Ram.

The company identifies the following requirements for software deployments:

- View the Upgrade Readiness data of all the client computers.
- Deploy App1 to the client computers in the marketing department.
- Deploy App2 to the client computers in the human resources (HR) department.
- Monitor the usage of App3.
- Deploy SalesAppLite to sales department computers that have 3 GB of RAM or less.
- Deploy SalesAppFull to sales department computers that have more than 3 GB of RAM.

You create a cloud-based distribution point that has a public name of dl594d4527614a09b934d470.

End of repeated scenario.

You need to meet the requirements for App3. What should you configure?

- A. a software inventory
- B. a configuration baseline
- C. software metering
- D. an application
- E. a computer agent

Answer: C

Explanation: References:
<https://docs.microsoft.com/en-us/sccm/apps/deploy-use/monitor-app-usage-with-software-metering>

NEW QUESTION 13

You deploy System Center Configuration Manager (Current Branch). You have client computers that run either Windows 7 or Windows 10. You need to deploy the Configuration Manager client to meet the following requirements:

- Install the client on the Windows 7 computers the next time the computers restart.

How should you deploy each client? To answer, select the appropriate options in the answer area. NOTE: Each correct selection is worth one point.

Answer Area

Windows 7:

Use client push installation
Deploy the client to a collection
Run ccmsetup.exe from a command line.
Enable an automatic site-wide client push installation.
Create a Group Policy object (GPO) that runs a startup script.

Windows 10:

Use client push installation
Deploy the client to a collection
Run ccmsetup.exe from a command line.
Enable an automatic site-wide client push installation.
Create a Group Policy object (GPO) that runs a startup script.

Answer:

Explanation: References: <https://technet.microsoft.com/en-us/library/gg712298.aspx>

NEW QUESTION 18

Your company has offices in New York and Montreal.

You manage all desktop computers by using System Center Configuration Manager (Current Branch). You need to perform the following tasks:

- *Redirect the Documents folder to a network share for all the users in the New York office.
- *In the Montreal office, configure all the computers that run Windows 10 Professional to run Windows 10 Enterprise.

What should you use in each office? To answer, drag the appropriate options to the correct offices. Each option may be used once, more than once, or not at all. You may need to drag the split bar between panes or scroll to view content.

Options

A configuration item

A configuration baseline

An edition upgrade policy

A user data and profiles configuration item

Answer Area

New York:

Option

Montreal:

Option

Answer:

Explanation: A configuration item
A user data and profiles configuration

NEW QUESTION 20

You have a deployment of System Center Configuration Manager (Current Branch). The domain contains the users shown in the following table.

User name	Members of
User1	Domain Users
User2	Help Desk Users
User3	Enterprise Admins
User4	Support Techs

Support Techs is a member of the Administrators group on each client computer. Help Desk Users is a member of the Power Users group on each client computer.

You need to deploy Configuration Manager agents by using a client push installation. The solution must use the principle of least privilege.

Which user should you configure as the client push installation account?

- A. User1
- B. User2
- C. User3
- D. User4

Answer: D

NEW QUESTION 24

You deploy the first System Center Configuration Manager primary site server to your organization.

You need to create the first user collection. The collection must contain members from an Active Directory security group and must update automatically.

Which two actions should you perform? Each correct answer presents part of the solution. NOTE: Each correct selection is worth one point.

- A. Create a user collection that has membership based on a direct rule.
- B. Configure Active Directory Forest Discovery.
- C. Create a user collection that has membership based on a query rule.
- D. Configure Active Directory Group Discovery.
- E. Create a user collection that has membership based on an include collection rule.

Answer: CD

Explanation: References:

<https://docs.microsoft.com/en-us/sccm/core/servers/deploy/configure/configure-discovery-methods> <https://technet.microsoft.com/en-us/library/gg712295.aspx>

NEW QUESTION 29

You have a deployment of System Center Configuration Manager (Current Branch). The Install Behavior for applications feature is enabled.

You have a line-of-business application named App1. Version 1.0 of App1 is deployed currently.

You need to upgrade App1 to version 2.0. Version 2.0 must be prevented from installing if App1.exe is running.

What should you do?

- A. Create a virtual application for version 2.0 of App1. Create a detection method for App1.exe.
- B. Create an application for version 2.0 of App1. Modify the Deployment Types and the Install Behavior settings.
- C. Modify the Deployment Types and the Install Behavior settings for version 1.0 of App1.
- D. Create a virtual application for version 1.0 of App1. Create a detection method for App1.exe.

Answer: C

Explanation: References:

<https://docs.microsoft.com/en-us/sccm/apps/deploy-use/deploy-applications#how-to-check-for-running-executab>

NEW QUESTION 34

Note: This question is part of a series of questions that present the same scenario. Each question in the series contains a unique solution that might meet the stated goals. Some question sets might have more than one correct solution, while others might not have a correct solution.

After you answer a question in this section, you will NOT be able to return to it. As a result, these questions will not appear in the review screen.

You have a deployment of System Center Configuration Manager (Current Branch). You configure a cloud management gateway for Configuration Manager.

You have a client computer that is currently on the corporate network.

You need to force the computer to get the location of the cloud management gateway immediately. Solution: You restart the SMS Agent Host service.

Does this meet the goal?

- A. Yes
- B. No

Answer: A

NEW QUESTION 37

Note: This question is part of a series of questions that present the same scenario. Each question in the series contains a unique solution that might meet the stated goals. Some question sets might have more than one correct solution, while others might not have a correct solution.

After you answer a question in this section, you will NOT be able to return to it. As a result, these questions will not appear in the review screen.

Your company uses a network ID of 10.0.0.0/8.

The company opens a new office that uses a network ID of 10.5.0.0/16. The office has three floors. Each floor has a VLAN. The network ID of each VLAN is 10.5.10.0/24, 10.5.20.0/24, and 10.5.30.0/24.

You create a distribution point for the new office.

You need to ensure that the clients in the new office obtain content from the new distribution point. Solution: Create an Active Directory site associated to the 10.5.0.0/16 subnet, and then create an Active Directory site boundary.

Does this meet the goal?

A. Yes

B. No

Answer: B

NEW QUESTION 39

Note: This question is part of a series of questions that present the same scenario. Each question in the series contains a unique solution that might meet the stated goals. Some question sets might have more than one correct solution, while others might not have a correct solution.

After you answer a question in this section, you will NOT be able to return to it. As a result, these questions will not appear in the review screen.

Your company uses a network ID of 10.0.0.0/8.

The company opens a new office that uses a network ID of 10.5.0.0/16. The office has three floors. Each floor has a VLAN. The network ID of each VLAN is 10.5.10.0/24, 10.5.20.0/24, and 10.5.30.0/24.

You create a distribution point for the new office.

You plan to distribute content to clients in the new office from the new distribution point. You need to create a boundary for the new office.

Solution: Create an IP subnet boundary for 10.5.10.0/24, 10.5.20.0/24, and 10.5.30.0/24. Does this meet the goal?

A. Yes

B. No

Answer: B

NEW QUESTION 40

You have a deployment of System Center Configuration Manager (Current Branch). You configure the environment for co-management.

You need to install the Configuration Manager client on all computers that are enrolled in Microsoft Intune. Which three actions should you perform? Each correct answer presents part of the solution.

NOTE: Each correct selection is worth one point.

A. Distribute the Configuration Manager client installation files to the cloud-based distribution point.

B. From Intune, deploy an app that contains Ccmsetup.msi.

C. From Configuration Manager, deploy a cloud-based distribution point.

D. From Configuration Manager, enable site-wide client push installation.

E. From Intune, deploy an app that contains Client.msi.

Answer: BDE

NEW QUESTION 42

You have a deployment of System Center Configuration Manager (Current Branch). You configure hybrid mobile device management (MDM).

You need to enroll company-owned Android devices into MDM. What should you do first?

A. Install the Company Portal app on the Android devices.

B. Create predeclared devices in Configuration Manager.

C. Create computer objects in Active Directory for the Android devices.

D. Purchase a Microsoft Office 365 subscription.

Answer: B

Explanation: References: <https://docs.microsoft.com/en-us/sccm/mdm/deploy-use/predeclare-devices-with-hardware-id>

NEW QUESTION 47

Note: This question is part of a series of questions that present the same scenario. Each question in the series contains a unique solution that might meet the stated goals. Some question sets might have more than one correct solution, while others might not have a correct solution.

After you answer a question in this section, you will NOT be able to return to it. As a result, these questions will not appear in the review screen.

You have a deployment of System Center Configuration Manager (Current Branch). You configure hybrid mobile device management (MDM).

You have a support technician named User1. Your company purchases 300 Apple iPhones.

You need to ensure that User1 can enroll the iPhones.

Solution: From the Configuration Manager console, you assign the Infrastructure Administrator security role to User1.

Does this meet the goal?

A. Yes

B. No

Answer: B

Explanation: References:

<https://docs.microsoft.com/en-us/sccm/mdm/deploy-use/enroll-devices-with-device-enrollment-manager>

NEW QUESTION 51

You have a deployment of System Center Configuration Manager (Current Branch).

Your company has a main office and a branch office. The branch office has five users. Some users use laptops and some use desktop computers.

All the servers for the company are located in the main office. The branch office connects to the main office by using a VPN over a DSL connection to the main office.

You need to minimize the bandwidth used to deploy updates to branch office clients over the VPN connection. The solution must minimize costs.

- A. a pull-distribution point
- B. a cloud management gateway
- C. BranchCache
- D. a cloud-based distribution point

Answer: C

Explanation: References: <https://docs.microsoft.com/en-us/sccm/core/plan-design/hierarchy/design-a-hierarchy-of-sites>

NEW QUESTION 52

Note: This question is part of a series of questions that present the same scenario. Each question in the series contains a unique solution that might meet the stated goals. Some question sets might have more than one correct solution, while others might not have a correct solution.

After you answer a question in this section, you will NOT be able to return to it. As a result, these questions will not appear in the review screen.

Your company has client computers that run either the 32-bit version of Windows 8 or the 64-bit version of Windows 10.

You need to install a line-of-business application to the computers. The 64-bit version of the application must be installed on the Windows 10 computers.

Solution: Create one package that uses two programs. Configure a requirement for each program. Does this meet the goal?

- A. Yes
- B. No

Answer: B

Explanation: References:

<https://blogs.technet.microsoft.com/canitpro/2013/06/02/step-by-step-managing-multiple-versions-of-the-same-a>

NEW QUESTION 56

Your company has offices in Toronto and New York. The Toronto office has 1,000 users. The New York office has 500 users.

You have a deployment of System Center Configuration Manager (Current Branch) in a data center. The primary site server hosts the Management point site system role and the Software update point the system role.

A distribution point is deployed to the Toronto office.

You need to deploy Windows 10 to all the client computers in the company by using PXE. The solution must meet the following requirements:

The computers in the New York office will be reformatted. The user data and settings will be discarded. The computers in the Toronto office will be replaced by new computers. The user data and settings will be migrated by using side-by-side migrations.

Which site system role should you add to each office before the deployment? To answer, drag the appropriate roles to the correct offices. Each role may be used once, more than once, or not at all. You may need to drag the split bar between panes or scroll to view content.

NOTE: Each correct selection is worth one point.

Roles	Answer Area
Distribution point	Toronto: <input type="text" value="Role"/>
Enrollment point	New York: <input type="text" value="Role"/>
Fallback status point	
State migration point	

Answer:

Explanation: References:

<https://docs.microsoft.com/en-us/sccm/osd/get-started/prepare-site-system-roles-for-operating-system-deployme>

NEW QUESTION 57

Note: This question is part of a series of questions that present the same scenario. Each question in the series contains a unique solution that might meet the stated goals. Some question sets might have more than one correct solution, while others might not have a correct solution.

After you answer a question in this section, you will NOT be able to return to it. As a result, these questions will not appear in the review screen.

Your company uses a network ID of 10.0.0.0/8.

The company opens a new office that uses a network ID of 10.5.0.0/16. The office has three floors. Each floor has a VLAN. The network ID of each VLAN is 10.5.10.0/24, 10.5.20.0/24, and 10.5.30.0/24.

You create a distribution point for the new office.

You plan to distribute content to clients in the new office from the new distribution point. You need to create a boundary for the new office.
Solution: Create an IP subnet boundary for 10.5.0.0/16. Does this meet the goal?

- A. Yes
- B. No

Answer: B

NEW QUESTION 58

Note: This question is part of a series of questions that use the same scenario. For your convenience, the scenario is repeated in each question. Each question presents a different goal and answer choices, but the text of the scenario is exactly the same in each question in this series.

Start of repeated scenario.

You work for a company named ADatum Corporation.

The ADatum network contains an Active Directory domain named adatum.com.

You have a partner company named Contoso, Ltd. The Contoso network contains an Active Directory domain named contoso.com.

All the client computers at both companies run Windows 10.

Each company has a deployment of System Center Configuration Manager (Current Branch).

ADatum has sales and IT departments. ADatum has a collection for each department.

Contoso has research, marketing, and human resources (HR) departments. Contoso has a collection for each department.

ADatum purchases Contoso.

You configure on-premises mobile device management (MDM) in adatum.com. You enroll the client computers in the IT department into on-premises MDM.

You configure hybrid MDM in contoso.com. End of repeated scenario.

You need to ensure that only managers at Contoso can enroll their computers into MDM. What should you do? To answer, select the appropriate options in the answer area. NOTE: Each correct selection is worth one point.

Tool to use:

<div>the Active Directory Users and Computers console</div> <div>the Configuration Manager console</div> <div>the Microsoft Azure portal</div> <div>the Microsoft Intune portal</div>

Object to create:

<div>a device collection</div> <div>a distribution group</div> <div>a dynamic device group</div> <div>a dynamic user group</div> <div>a security group</div> <div>a user collection</div>

Answer:

Explanation: References: <https://docs.microsoft.com/en-us/sccm/mdm/deploy-use/setup-hybrid-mdm>

NEW QUESTION 62

Note: This question is part of a series of questions that present the same scenario. Each question in the series contains a unique solution that might meet the stated goals. Some question sets might have more than one correct solution, while others might not have a correct solution.

After you answer a question in this section, you will NOT be able to return to it. As a result, these questions will not appear in the review screen.

You have a deployment of System Center Configuration Manager (Current Branch). You configure a cloud management gateway for Configuration Manager.

You have a client computer that is currently on the corporate network.

You need to force the computer to get the location of the cloud management gateway immediately. Solution: You restart the Network Location Awareness service. Does this meet the goal?

- A. Yes
- B. No

Answer: B

NEW QUESTION 64

You have a deployment of System Center Configuration Manager (Current Branch). You configure hybrid mobile device management (MDM).

You need to ensure that you can manage Apple iOS devices by using Configuration Manager.

Which four actions should you perform in sequence? To answer, move the appropriate actions to the answer area and arrange them in the correct order.

Actions

Add an Apple Volume Purchase Program token to Configuration Manager.

Upload an Apple Push Notification (APN) certificate to Microsoft Intune.

Download sideloading keys.

Download an Apple Push Notification (APN) certificate.

Submit a request to the Apple Push Notification Certification Portal.

Create an Apple Push Notification (APN) certificate request.

Answer Area

⏪

⏩

⏴

⏵

Answer:

Explanation: References: <https://www.systemcenterdudes.com/enroll-ios-device-sccm/>

NEW QUESTION 67

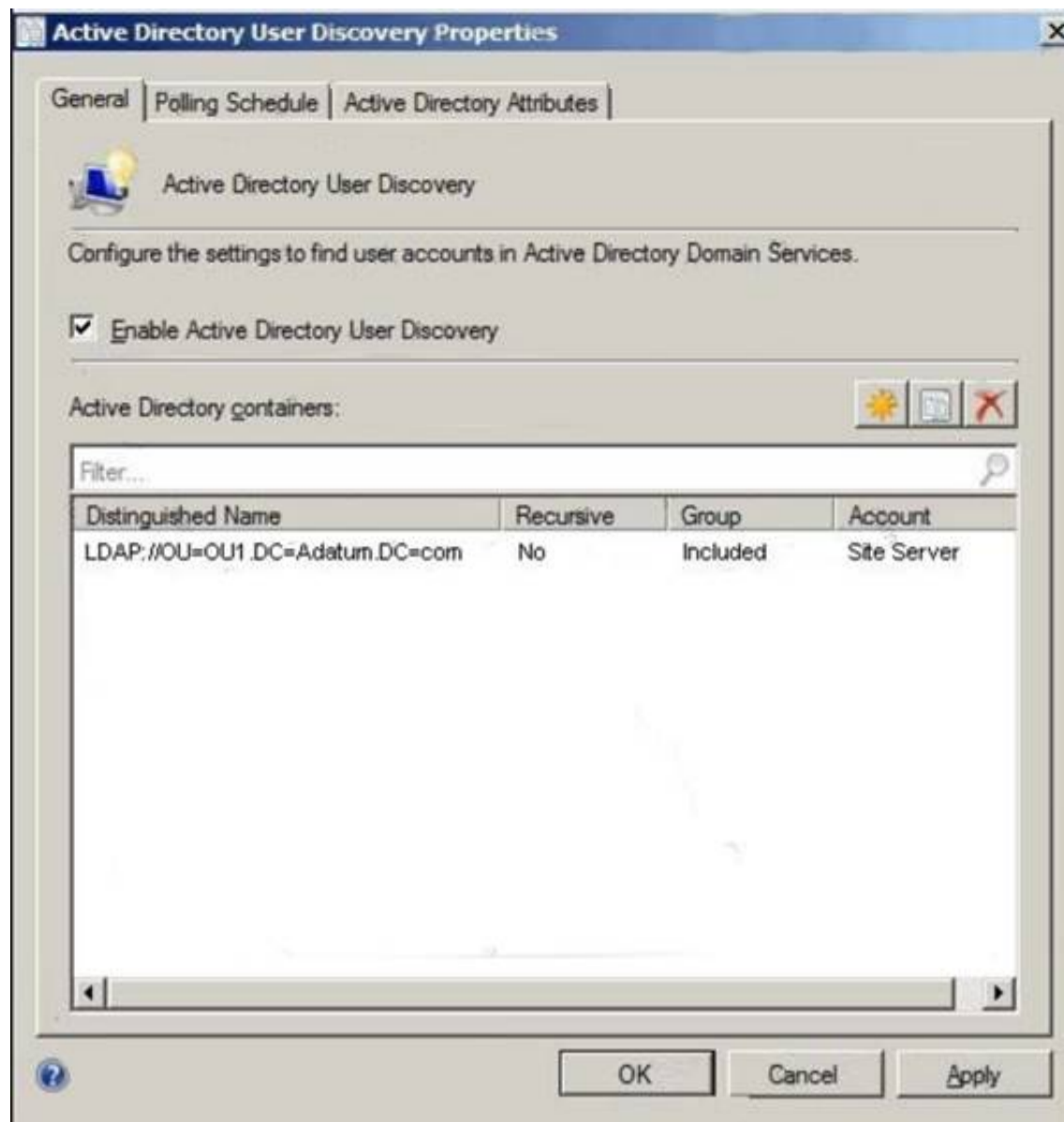
Your network contains as Active Directory forest named adatum.com. The forest has a deployment of System Center Configuration Manager (Current Branch). The adatum.com domain contains the organizational units (OUs) shown in the following table.

OU name	Parent
OU1	Adatum.com
OU2	Adatum.com
OU11	OU1

The adatum.com domain contains the groups shown in the following table.

Group Name	OU
Group 1	OU1
Group2	OU11

Active Directory User Discovery is configured as shown in the exhibit. (Click the Exhibit button.) Exhibit:



You perform the following actions:

- ▶ Create a user named User1 in OU1.
- ▶ Create a user named User2 in OU2 in OU2 and add User2 to Group2.
- ▶ Create a user named User3 in OU2 and add User3 to Group1.

For each of the following statements, select Yes if the statement is true. Otherwise, select False. NOTE: Each correct selection is worth one point.

Answer Area

Statements	Yes	No
Configuration Manager will discover User1.	<input type="radio"/>	<input type="radio"/>
Configuration Manager will discover User2.	<input type="radio"/>	<input type="radio"/>
Configuration Manager will discover User3.	<input type="radio"/>	<input type="radio"/>

Answer:

Explanation: References: <https://technet.microsoft.com/en-us/library/bb693489.aspx>

NEW QUESTION 68

You have a deployment of System Center Configuration Manager (Current Branch). You use the deployment to manage client computers that run Windows 7. You need to deploy a Microsoft Application Virtualization (App-V) package to the computers by using Configuration Manager. What should you do first?

- A. Configure the Enable App-V Client setting by using a Group Policy object (GPO).
- B. Deploy the App-V client to the computers.
- C. Install the App-V Sequencer on a reference computer.
- D. From the Configuration Manager console, create an App-V virtual environment.

Answer: B

NEW QUESTION 71

You install the System Center Configuration Manager client on a computer.
 When you check the Configuration Manager console, the computer does not appear in the console. Other computers appear in the console.
 You need to review the Configuration Manager logs for the computer. What should you use?

- A. the cmtrace.exe command
- B. the Configuration Manager console
- C. the statview.exe command
- D. the Event Viewer console

Answer: A

Explanation: References: <https://docs.microsoft.com/en-us/sccm/core/plan-design/hierarchy/log-files>

NEW QUESTION 76

You have a deployment of System Center Configuration Manager (Current Branch). You add the cloud management gateway connector point to the deployment.
 Which site system role can be configured to receive the traffic from the cloud management gateway?

- A. Service connection point
- B. Distribution point
- C. Management point
- D. Endpoint Protection point

Answer: C

Explanation: References: <https://www.systemcenterdudes.com/how-to-setup-an-sccm-cloud-management-gateway/>

NEW QUESTION 79

You have a deployment of System Center Configuration Manager (Current Branch).
 You need to configure the Configuration Manager clients to meet the following requirements:

- ▶ Manage Microsoft Office 365 updates.
- ▶ Configure the times at which updates can be applied.
- ▶ Allow unsigned Windows PowerShell scripts to be executed.

What should you use to meet each requirement? To answer, drag the appropriate settings to the correct requirements. Each setting may be used once, more than once, or not at all. You may need to drag the split bar between panes or scroll to view content.

NOTE: Each correct selection is worth one point.

Settings	Answer Area
Client Settings	Manage Office 365 updates: Setting
Collection properties	
Hierarchy Settings properties	Allow unsigned PowerShell scripts to be executed: Setting
Security scopes	
	Configure the times at which updates can be applied: Setting

Answer:

Explanation:

Settings	Answer Area
Client Settings	Manage Office 365 updates: Client Settings
Collection properties	
Hierarchy Settings properties	Allow unsigned PowerShell scripts to be executed: Security scopes
Security scopes	
	Configure the times at which updates can be applied: Client Settings

NEW QUESTION 80

You have a deployment of System Center Configuration Manager (Current Branch).

You configure the Backup Site Server maintenance task to back up Configuration Manager to a local folder. You need to create a script to restart the Configuration Manager server after the backup completes.

How should you create the script? To answer, select the appropriate options in the answer area. NOTE: Each correct selection is worth one point.

Script file to create:

AfterBackup.bat
 ApplicationHost.config
 Backup.xml
 BackupTask.ps1

Script file location:

Program Files\Microsoft Configuration Manager\inbox\schedule.box
 Program Files\Microsoft Configuration Manager\inbox\smsbkup.box
 Program Files\Microsoft Configuration Manager\scripts
 Windows\WinSxS\Backup

Answer:

Explanation: References: <https://docs.microsoft.com/en-us/sccm/protect/understand/backup-and-recovery>

NEW QUESTION 82

You have a deployment of System Center Configuration Manager (Current Branch). All client computers run Windows 7 and have the most recent updates installed. Configuration Manager and Microsoft Operations Manager Suite (OMS) are integrated.

You plan to use Upgrade Readiness to identify which computers support Windows 10. You need to ensure that the computers report data to OMS.

Which two actions should you perform? Each correct answer presents part of solution. NOTE: Each correct selection is worth one point.

- A. From Client Settings, configure a commercial ID key.
- B. Configure Asset Intelligence.
- C. From Client Settings, configure Windows telemetry.
- D. Configure a software inventory.
- E. Configure a hardware inventory.

Answer: AC

Explanation: References: <https://docs.microsoft.com/en-us/sccm/core/clients/manage/upgrade/upgrade-analytics>
<https://docs.microsoft.com/en-us/sccm/core/clients/manage/monitor-windows-analytics>

NEW QUESTION 84

Note: This question is part of a series of questions that present the same scenario. Each question in the series contains a unique solution that might meet the stated goals. Some question sets might have more than one correct solution, while others might not have a correct solution.

After you answer a question in this section, you will NOT be able to return to it. As a result, these questions will not appear in the review screen.

You have a deployment of System Center Configuration Manager (Current Branch). You configure hybrid mobile device management (MDM).

You have a support technician named User1. Your company purchases 300 Apple iPhones.

You need to ensure that User1 can enroll the iPhones.

Solution: From the Microsoft Intune Subscription Properties, you add User1 as a Device Enrollment Manager. Does this meet the goal?

- A. Yes
- B. No

Answer: A

Explanation: References: <https://docs.microsoft.com/en-us/sccm/mdm/deploy-use/enroll-devices-with-device-enrollment-manager>

NEW QUESTION 86

Note: This question is part of a series of questions that present the same scenario. Each question in the series contains a unique solution that might meet the stated goals. Some question sets might have more than one correct solution, while others might not have a correct solution.

After you answer a question in this section, you will NOT be able to return to it. As a result, these questions will not appear in the review screen.

You have a deployment of System Center Configuration Manager (Current Branch). You deploy the first primary site server to your organization. Discovery is not configured. You need to deploy the Configuration Manager client to five client computers in a workgroup. Solution: You deploy the client by using a Group Policy software installation. Does this meet the goal?

- A. Yes
- B. No

Answer: B

NEW QUESTION 90

You have a deployment of System Center Configuration Manager (Current Branch) that contains a primary site named S01. S01 has the Software update point site system role installed on a server named Server01 and the Distribution point site system role installed on a server named Server02. You need to configure when Configuration Manager can install updates on the site system servers. What should you configure?

- A. the Properties of the S01 site
- B. the Distribution point Properties of Server02
- C. the Software update point Properties of Server01
- D. the Software Update Point Component Properties of S01

Answer: A

Explanation: References: <https://docs.microsoft.com/en-us/sccm/sum/get-started/manage-settings-for-software-updates>

NEW QUESTION 94

You have a deployment of System Center Configuration Manager (Current Branch).

You need to deploy an application to the users in the sales department. The deployment must meet the following requirements:

- Install the application on client computers that have at least 5 GB of RAM.
- Validate that the deployment of the application was successful. Which settings should you configure for the deployment?

- A. Detection Method and Requirements
- B. Dependencies and User Experience
- C. Install Behavior and Dependencies
- D. User Experience and Detection Method
- E. Requirements and Dependencies

Answer: A

Explanation: References:

<https://blogs.msdn.microsoft.com/scstr/2012/05/31/how-to-create-an-application-in-configuration-manager-2012>

NEW QUESTION 97

You deploy System Center Configuration Manager (Current Branch) to manage desktop computers. On the reporting services point, you discover that the following reports are missing:

- ▶ Application Deployment – Historical
- ▶ List of Malware Detected – Historical
- ▶ General Software Inventory – Historical
- ▶ General Hardware Inventory – Historical
- ▶ Infrastructure Health Overview – Historical
- ▶ Software Distribution Summary – Historical
- ▶ Endpoint Protection and Software Update Compliance – Historical

You need to ensure that you can generate reports for long-term historical data.

What should you do first?

- A. Create report subscriptions.
- B. Install Microsoft SQL Server Report Builder.
- C. Modify the properties of the reporting services point.
- D. Add a Data Warehouse service point.

Answer: D

Explanation: References: <https://docs.microsoft.com/en-us/sccm/core/servers/manage/data-warehouse>

NEW QUESTION 98

You have a deployment of System Center Configuration Manager (Current Branch). Your company has two sites named Site01 and Site02.

Site02 has 200 client computers that run Windows 10 and a server named Server01. You add the Distribution point site system role to Server01.

You need to ensure that only the client computers in Site02 can download content from Server01. What should you configure?

- A. security scopes
- B. security roles
- C. boundary groups
- D. boundary group relationships

Answer: C

Explanation: References: <https://github.com/MicrosoftDocs/SCCMdocs/blob/master/sccm/core/servers/deploy/configure/boundary-groups>

NEW QUESTION 100

You have a deployment of System Center Configuration Manager (Current Branch).

The manufacturing department has 100 client computers that run Windows 10. The computers are prevented from accessing the Internet. You purchase a new Microsoft Store for Business app named App1 that is licensed for offline use. You need to deploy App1 to the computers. Which two actions should you perform? Each correct answer presents part of the solution. NOTE: Each correct selection is worth one point.

- A. Configure the account settings to show offline-licensed apps.
- B. Configure the Application Catalog website point.
- C. Create an application in the Software Library.
- D. Configure synchronization between Configuration Manager and the Microsoft Store for Business.
- E. Extract the APPX file to a folder that can be accessed by using Configuration Manager.
- F. Install App1 from the Microsoft Store for Business on a client computer that has access to the Internet.

Answer: AC

NEW QUESTION 103

You have a deployment of System Center Configuration Manager (Current Branch). Configuration Manager has the boundaries defined as shown in the following table.

Boundary name	Configuration	Type
Boundary1	Network: 192.168.128.0 Subnet mask: 255.255.0.0	IP subnet
Boundary2	Network: 172.16.128.0 Subnet mask: 255.255.255.0	IP subnet
Boundary3	172.16.10.15 to 172.16.10.100	IP address range
Boundary4	192.168.10.15 to 192.168.10.100	IP address range
Boundary5	fc07:45d4:5626:85b1	IPv6 prefix

Configuration Manager has the boundary groups defined as shown in the following table.

Boundary group name	Boundary
BG1	Boundary1, Boundary4
BG2	Boundary5
BG3	Boundary2, Boundary3

You install a new distribution point named DPI, and you add DPI to BG1 and BG3.

For each of the following statements, select. Yes if the statement is true. Otherwise, select No. NOTE: Each correct selection is worth one point.

Answer Area

Statements	Yes	No
A client computer that has an IPv4 address of 172.16.10.12 can use DP1.	<input type="radio"/>	<input type="radio"/>
A client computer that has an IPv4 address of 192.168.130.12 can use DP1.	<input type="radio"/>	<input type="radio"/>
A client computer that has only an IPv6 address can use DP1.	<input type="radio"/>	<input type="radio"/>

Answer:

Explanation:

Answer Area

Statements	Yes	No
A client computer that has an IPv4 address of 172.16.10.12 can use DP1.	<input type="radio"/>	<input checked="" type="radio"/>
A client computer that has an IPv4 address of 192.168.130.12 can use DP1.	<input checked="" type="radio"/>	<input type="radio"/>
A client computer that has only an IPv6 address can use DP1.	<input type="radio"/>	<input checked="" type="radio"/>

NEW QUESTION 108

Your network contains clustered file servers and application servers that have local shares.

You plan to use Hardware Inventory to capture the Win32_ClusterShare class.

You need to find all the file shares on the servers on the network. The solution must minimize the amount of information that is captured.

Which four actions should you perform in sequence? To answer, move the appropriate actions from the list of actions to the answer area and arrange them in the correct order.

Actions	Answer Area
From Default Client Settings, click Hardware Inventory and disable the Win32_ClusterShare class.	
Deploy the new custom Client Device Settings object to the All Systems collection.	
From Default Client Settings, click Hardware Inventory and add the Win32_ClusterShare WMI class.	
Create a custom Client Device Settings object. From Hardware Inventory, enable the Win32_ClusterShare class.	
Create a collection named All Servers that uses a query to limit the collection to the servers. Deploy the custom Client Device Settings object to the collection.	
Update the Sms_def.mof file.	

Answer:

Explanation:

Actions	Answer Area
From Default Client Settings, click Hardware Inventory and disable the Win32_ClusterShare class.	From Default Client Settings, click Hardware Inventory and disable the Win32_ClusterShare class.
Deploy the new custom Client Device Settings object to the All Systems collection.	
From Default Client Settings, click Hardware Inventory and add the Win32_ClusterShare WMI class.	Create a custom Client Device Settings object. From Hardware Inventory, enable the Win32_ClusterShare class.
Create a custom Client Device Settings object. From Hardware Inventory, enable the Win32_ClusterShare class.	Create a collection named All Servers that uses a query to limit the collection to the servers. Deploy the custom Client Device Settings object to the collection.
Create a collection named All Servers that uses a query to limit the collection to the servers. Deploy the custom Client Device Settings object to the collection.	
Update the Sms_def.mof file.	Deploy the new custom Client Device Settings object to the All Systems collection.

NEW QUESTION 113

You have a deployment of System Center Configuration Manager (Current Branch) that contains a collection named Restricted. Restricted contains only client computers that run Windows 10.

You need to ensure that only trusted executable files can run on the computers in the Restricted collection.

What should you do?

- A. Deploy custom Client Device Settings.
- B. Create a Windows Defender Application Control (WDAC) policy.
- C. Modify the Default Client Settings.
- D. Create a device compliance policy.

Answer: B

Explanation: References:

<https://docs.microsoft.com/en-us/sccm/protect/deploy-use/use-device-guard-with-configuration-manager>

NEW QUESTION 116

You have a deployment of System Center Configuration Manager (Current Branch) that contains the servers shown in the following table.

Server name	Site system role
Server1	Management point
Server2	Distribution point
Server3	Enrollment point
Server4	Software update point

You need to configure the environment to ensure that operating systems can be deployed by using operating system deployment. On which server should you enable PXE support?

- A. Server1
- B. Server2
- C. Server3
- D. Server4

Answer: B

Explanation: References: <https://technet.microsoft.com/en-us/library/gg712266.aspx>

NEW QUESTION 118

You have a deployment of System Center Configuration Manager (Current Branch). You currently deploy all Windows updates by using Configuration Manager. You pilot the deployment of Click-to-Run for Office 365 and discover that clients are downloading updates for Office 365 from the Internet. You need to manage the updates for Click-to-Run for Office 365. What should you do?

- A. Create an automatic deployment rule (ADR) for software updates.
- B. From Default Client Settings, click Software Updates and set Enable installation of Express installation files on clients to Yes.
- C. Create a deployment package for software updates.
- D. From Default Client Settings, click Software Updates and set Enable management of the Office 365 Client Agent to Yes.

Answer: C

Explanation: References: <https://docs.microsoft.com/en-us/sccm/core/servers/deploy/configure/deploy-and-manage-content>

NEW QUESTION 120

After you answer a question in this section, you will NOT be able to return to it. As a result, these questions will not appear in the review screen. You plan to deploy System Center Configuration Manager (Current Branch) by using an initial pilot deployment. The pilot deployment will contain five computers that run Windows 10. You need to deploy the Configuration Manager client to the five computers only. Solution: From each client, you run ccmsetup.exe. Does this meet the goal?

- A. Yes
- B. No

Answer: A

NEW QUESTION 121

Note: This question is part of a series of questions that present the same scenario. Each question in the series contains a unique solution that might meet the stated goals. Some question sets might have more than one correct solution, while others might not have a correct solution. After you answer a question in this section, you will NOT be able to return to it. As a result, these questions will not appear in the review screen. You have a deployment of System Center Configuration Manager that collects the hardware inventory of Windows and Linux client computers. You need to capture additional information about the hardware on the Linux computers. Solution: You create a custom hardware inventory provider by using the OMI source. Does this meet the goal?

- A. Yes
- B. No

Answer: B

NEW QUESTION 122

You have a deployment of System Center Configuration Manager (Current Branch) that you use to manage devices on the corporate network. You need to ensure that you can deploy software to Configuration Manager clients on the Internet. What should you deploy?

- A. a management point on a perimeter network and a cloud management gateway in Microsoft Azure
- B. a cloud-based distribution point in Microsoft Azure and the Microsoft Operations Management Suite (OMS) connector
- C. a distribution point and a management point on a perimeter network
- D. a cloud management gateway and the Microsoft Azure Service for Cloud Management in Microsoft Azure

Answer: A

Explanation: References: <https://docs.microsoft.com/en-us/sccm/core/clients/manage/cmgy/plan-cloud-management-gateway>

NEW QUESTION 123

You have a deployment of System Center Configuration Manager (Current Branch) that you use to manage devices on the corporate network. You need to ensure that you can deploy software to Configuration Manager clients on the Internet. What should you deploy?

- A. a cloud-based distribution point in Microsoft Azure and the Microsoft Operations Management Suite (OMS) connector
- B. a management point and a service connection point in a perimeter network.
- C. a cloud-based distribution point and a cloud management gateway in Microsoft Azure
- D. a cloud-based distribution point in Microsoft Azure and a Microsoft Intune subscription

Answer: C

Explanation: References: <https://docs.microsoft.com/en-us/sccm/core/clients/manage/cmgy/plan-cloud-management-gateway>

NEW QUESTION 125

You have a deployment of System Center Configuration Manager (Current Branch). Your company has offices in Paris and Boston. All client computers run Windows 7.

You plan to migrate all the computers to Windows 10 by using task sequences in Configuration Manager. All the hard drives will be reformatted during the migration.

You need to meet the following requirements:

- ▶ For the computers in the Boston office, the user data and settings must be retained.
- ▶ For the computers in the Paris office, users must be able to select which applications to install.

What should you use in each office? To answer, select the appropriate options in the answer area.

NOTE: Each correct selection is worth one point.

Answer Area

Boston:

<input type="checkbox"/> An automatic deployment rule (ADR) <input type="checkbox"/> The Active Directory Migration Tool (ADMT) <input type="checkbox"/> The Microsoft Deployment Toolkit (MDT) <input type="checkbox"/> The user State Migration Tool (USMT)
--

Paris:

<input type="checkbox"/> An automatic deployment rule (ADR) <input type="checkbox"/> The Active Directory Migration Tool (ADMT) <input type="checkbox"/> The Microsoft Deployment Toolkit (MDT) <input type="checkbox"/> The user State Migration Tool (USMT)
--

Answer:

Explanation: References: <https://docs.microsoft.com/en-us/windows/deployment/windows-10-deployment-scenarios>

NEW QUESTION 126

You have a device collection named Collection1.

Currently, you use an automated deployment rule (ADR) to deploy updates as quickly as possible to Collection1.

You need to ensure that the updates are installed during a predefined period of time. The solution must affect the updates only.

What should you do?

- A. From the Membership Rules tab of Collection1, schedule an incremental update of the collection.
- B. From the Maintenance Windows tab of Collection1, create a new schedule that applies to all deployments.
- C. From the Membership Rules tab of Collection1, schedule a full update of the collection.
- D. From the Maintenance Windows tab of Collection1, create a new schedule that applies to software updates only.

Answer: D

Explanation: References: <https://technet.microsoft.com/en-us/library/hh508762.aspx>

NEW QUESTION 130

You have a System Center Configuration Manager (Current Branch) hierarchy that contains a single primary server named cm01.contoso.corp.

You have a Web Application Proxy that presents the management point and the distribution point to the Internet as sccm.contoso.com.

You have a user who has a client computer that runs Windows 10. The user currently works at a customer site. The user has access to the Internet but cannot access the customer's corporate network.

You discover that the Configuration Manager client on the computer has an issue. You need to reinstall the Configuration Manager client on the computer.

Which command should you run? To answer, select the appropriate options in the answer area. NOTE: Each correct selection is worth one point.

Answer Area

<div><div></div><div>ccmsetup.exe</div><div>ccmsetupcmd.exe</div><div>client.msi</div></div>	<div><div></div><div>/mp:sccm.contoso.com</div><div>/noservice CCMHTTPSPORT=443</div><div>DNSSUFFIX=contoso.com</div><div>SMSSITECODE=AUTO</div></div>	/UsePKICert /noCRLCheck
--	--	-------------------------

Answer:

Explanation: References: <https://docs.microsoft.com/en-us/sccm/core/clients/deploy/about-client-installation-properties>

NEW QUESTION 132

Your network contains an Active Directory forest. The forest contains an enterprise certification authority (CA) named CA01. The CRL distribution point (CDP) is configured to use LDAP.

You have a System Center Configuration Manager server named CM01.

You configure on-premises mobile device management (MDM). You have a domain-joined computer that runs Windows 10. You successfully enroll the computer into MDM.

You need to ensure that you can enroll a non-domain-joined computer into MDM. What should you do? To answer, select the appropriate options in the answer area. NOTE: Each correct selection is worth one point.

Answer Area

on the client computer:	<div><div></div><div>create an inbound firewall rule for CA01. Create an inbound firewall rule for CM01. Install a SSL certificate from a public CA Install a trusted root certificate from CA01</div></div>
on CA01:	<div><div></div><div>Modify the CDP. Create a new certificate template Install the Online Responder service Modify the Authority Information Access (AIA) extension.</div></div>

Answer:

Explanation: References:
<https://docs.microsoft.com/en-us/sccm/mdm/get-started/set-up-device-enrollment-on-premises-mdm>
https://docs.microsoft.com/en-us/sccm/mdm/get-started/set-up-certificates-on-premises-mdm#bkmk_exportCert

NEW QUESTION 134

You have offices in the United Kingdom and Sweden.

You have a deployment of System Center Configuration Manager that you use to manage the client computers in the offices.

All the managed computers run Windows 10. The computers in the United Kingdom office use the English (United Kingdom) en-GB language pack. The computers in the Sweden office use the Swedish (Sweden) sv-SE language pack.

You need to create a servicing plan for Windows 10 in Configuration Manager to update the computers to the latest version of Windows 10.

The solution must meet the following requirements:

Values	Answer Area
<div><div><10></div><div>>=10</div><div>>10</div><div>en-GB AND sv-SE</div><div>en-GB OR sv-SE</div><div>"en-GB, sv-SE"</div><div>ten</div></div>	<div><div>Required:</div><div>Value</div><div>Title:</div><div>Value</div></div>

Answer:

Explanation: References: <https://docs.microsoft.com/en-us/sccm/osd/deploy-use/manage-windows-as-a-service>

NEW QUESTION 139

You have a deployment of System Center Configuration Manager (Current Branch).

Your company opens a new office. All the client computers in the new office use IPv6 addresses only. The IPv6 address of one of the computers is 2001:3823:2c50:6a39:e976:b0eb:93f7:fb41.

You need to configure an IPv6 boundary in Configuration Manager for the new office. What should you use to configure the boundary?

- A. 2001:3823:2c50:6a39
- B. ::93f7:fb41
- C. 2001:3823::
- D. e976:b0eb:93f7:fb41

Answer: A

Explanation: References:

<https://docs.microsoft.com/en-us/sccm/core/servers/deploy/configure/boundaries> <https://networklessons.com/ipv6/how-to-find-ipv6-prefix/>

NEW QUESTION 144

You have a deployment of System Center Configuration Manager (Current Branch).

You need to back up the CD.Latest folder and the Configuration Manager database. The solution must meet the following requirements:

- ▶ Compress the backup of the Configuration Manager database.
- ▶ Ensure that the backups can be restored to a consistent state.

Which type of backups should you use? To answer, drag the appropriate options to the correct content types. Backup type may be used once, more than once, or not at all. You may need to drag the split bar between panes or scroll to view content.

NOTE: Each correct selection is worth one point.

Answer Area

Backup Types

A full database backup in Microsoft SQL Server

A maintenance task backup in Configuration Manager

A system state backup in Windows Server Backup

The CD.Latest folder:

Backup type

The Configuration Manager database:

Backup type

Answer:

Explanation: References: <https://docs.microsoft.com/en-us/sccm/protect/understand/backup-and-recovery>

NEW QUESTION 147

You have a deployment of System Center Configuration Manager (Current Branch).

You need to recommend a solution to manage and reduce the attack surface of applications used in your environment.

What should you include in the recommendation?

- A. Windows Defender Exploit Guard
- B. antimalware policies
- C. Windows Defender Advanced Threat Protection (ATP) policies
- D. compliance policies

Answer: A

NEW QUESTION 148

You have a deployment of System Center Configuration Manager (Current Branch). You configure hybrid mobile device management (MDM).

You have a bring-your-own-device (BYOD) policy. Users self-enroll their mobile phones.

You plan to deploy a line-of-business app named App01 to Apple iOS devices. App01 can access private company data.

You need to ensure that a PIN is entered when the users open App1. What should you configure?

- A. an application management policy
- B. a compliance policy
- C. a configuration baseline

Answer: A

NEW QUESTION 151

You have a deployment of System Center Configuration Manager (Current Branch).

You need to create a list of client computers that lack the system resources required to upgrade Microsoft Office.

Which two actions should you perform? Each correct answer presents part of the solution. NOTE: Each correct selection is worth one point.

- A. Enable Asset Intelligence hardware inventory reporting classes.
- B. Configure auditing for the resource attributes on files.
- C. Add an Asset Intelligence synchronization point.
- D. Add a service connection point.
- E. Enable Active Directory System Discovery.

Answer: AC

Explanation: References:

<https://docs.microsoft.com/en-us/sccm/core/clients/manage/asset-intelligence/introduction-to-asset-intelligence> <https://docs.microsoft.com/en-us/sccm/core/clients/manage/asset-intelligence/configuring-asset-intelligence>

NEW QUESTION 156

You have a deployment of System Center Configuration Manager (Current Branch).

You configure reporting in Configuration Manager and verify that users can view reports.

You need to ensure that the users can subscribe to the reports and that the reports are delivered by using email. What should you do?

- A. In Active Directory Users and Computers, configure the email address of the users.
- B. In Configuration Manager, configure the Report Options.
- C. In Reporting Services Configuration Manager, configure the E-mail Settings.
- D. In Microsoft SQL Server Management Studio, configure Database Mail.

Answer: C

Explanation: References:

<https://github.com/MicrosoftDocs/SCCMdocs/blob/master/sccm/core/servers/manage/operations-and-maintenan>
[https://docs.microsoft.com/en-us/previous-versions/sql/sql-server-2008/ms159155\(v=sql.100\)](https://docs.microsoft.com/en-us/previous-versions/sql/sql-server-2008/ms159155(v=sql.100))

NEW QUESTION 161

Note: This question is part of a series of questions that present the same scenario. Each question in the series contains a unique solution that might meet the stated goals. Some question sets might have more than one correct solution, while others might not have a correct solution.

After you answer a question in this section, you will NOT be able to return to it. As a result, these questions will not appear in the review screen.

You have a deployment of System Center Configuration Manager (Current Branch). You configure hybrid mobile device management (MDM).

You enroll several Apple iOS devices and deploy compliance policies. One of the devices is marked as noncompliant.

You need to retrieve the logs from the device.

Solution: You open the Company Portal app, shake the device, and then tap Send Diagnostic Report when the diagnostics alert appears.

Does this meet the goal?

- A. Yes
- B. No

Answer: B

NEW QUESTION 165

Note: This question is part of a series of questions that present the same scenario. Each question in the series contains a unique solution that might meet the stated goals. Some question sets might have more than one correct solution, while others might not have a correct solution.

After you answer a question in this section, you will NOT be able to return to it. As a result, these questions will not appear in the review screen.

Your company uses a network ID of 10.0.0.0/8.

The company opens a new office that uses a network ID of 10.La0.0/16. The office has three floors. Each floor has a VLAN. The network ID of each VLAN is 10.5.10.0/24, 10.5.20.0/24, and 10.5.30.0/24.

You create a distribution point for the new office.

You plan to distribute content to clients in the new office from the new distribution point. You need to create a boundary for the new office.

Solution: Create an IP address range boundary from 10.5.1.1 to 10.5.255.255. Does this meet the goal?

- A. Yes
- B. No

Answer: B

NEW QUESTION 168

You have a deployment of System Center Configuration Manager (Current Branch). You have offices in Montreal and Seattle.

You need to deploy software to the client computers in the Montreal office only. What should you do first?

- A. Create an Active Directory container.
- B. Create a user collection that contains the users in the Montreal office.

- C. Configure a boundary group for client assignment.
- D. Create a boundary for the Montreal office that uses IP subnets.

Answer: D

NEW QUESTION 173

You have a collection of devices that run an application named SaleApp1.

Every week, the sales manager publishes an updated price list to a file share. To use the new price list, the list must be copied to the application folder on the devices.

You need to ensure that SalesApp1 receives a new price list weekly. What should you configure?

- A. a weekly maintenance window for the target collection
- B. a weekly schedule for the Update Application Available Targeting maintenance task
- C. a weekly content validation schedule on the distribution point
- D. a package that has a weekly recurrence schedule

Answer: D

NEW QUESTION 174

Note: This question is part of a series of questions that present the same scenario. Each question in the series contains a unique solution that might meet the stated goals. Some question sets might have more than one correct solution, while others might not have a correct solution.

After you answer a question in this section, you will NOT be able to return to it. As a result, these questions will not appear in the review screen.

You deploy the first primary site server to your organization. Discovery is not configured. You need to deploy the Configuration Manager client to five client computers in a workgroup. Solution: You manually install the client on the computers.

Does this meet the goal?

- A. Yes
- B. No

Answer: A

Explanation: References: <https://docs.microsoft.com/en-us/sccm/core/clients/deploy/deploy-clients-to-windows-computers>

NEW QUESTION 179

You deploy Microsoft Office 365 ProPlus by using Configuration Manager.

You need to use Configuration Manager to update Office 365 ProPlus as soon as possible.

Which three actions should you perform in sequence? To answer, move the appropriate actions from the list of actions to the answer area and arrange them in the correct order.

Actions	Answer Area
Create an Office 2016 Deployment Toolkit (ODT) configuration file	
Set the OfficeMgmtCOM attribute to True in Configuration.xml	
Add the Office 365 updates to a software update group	
Install the Windows Server Update Services (WSUS) administration console on the same system as the Office 2016 Deployment Tool (ODT)	
Configure the software update point to include Office 365 Client Update	
Synchronize updates	

Answer:

Explanation: <https://docs.microsoft.com/en-us/deployoffice/manage-updates-to-office-365-proplus-with-system-center-config>

NEW QUESTION 181

You have a deployment of System Center Configuration Manager (Current Branch) that has a management point and a distribution point.

You have 1,000 Configuration Manager clients that run Windows 10.

You open the Windows 10 Servicing dashboard and discover that no data appears. You need to ensure that servicing data is available on the dashboard. What should you do?

- A. Configure a software inventory.
- B. Configure a hardware inventory.
- C. Add a reporting services point and configure the report options.
- D. Add a service connection point and a software update point.

Answer: D

Explanation: References: <https://docs.microsoft.com/en-us/sccm/osd/deploy-use/manage-windows-as-a-service>

NEW QUESTION 182

Your company has a main office and a branch office.

You have a deployment of System Center Configuration Manager (Current Branch).

The main office has a software update point. Currently, all client computers receive Microsoft updates from the main office.

You need to ensure that the computers in the branch office receive updates from a local server. The solution must meet the following requirements:

- ▶ Ensure that the updates are managed by using Configuration Manager.
- ▶ Ensure that the computers in the branch office scan for updates against a local catalog. What should you deploy to the branch office?

- A. a software update point, a service connection point, and an Application Catalog website point
- B. a software update point, a distribution point, and a reporting services point
- C. Windows Server Update Services (WSUS), a service connection point, and a management point
- D. Windows Server Update Services (WSUS), a software update point, and a distribution point

Answer: D

NEW QUESTION 183

You have a deployment of System Center Configuration Manager (Current Branch). You configure discovery.

You have a query that returns all devices without the Configuration Manager client installed. You create a collection that uses the query.

You need to deploy the Configuration Manager client to the members of the collection only. Which deployment method should you use?

- A. a package deployment
- B. a software update point-based installation
- C. a manual client push installation
- D. a Group Policy installation

Answer: C

NEW QUESTION 188

You have a deployment of System Center Configuration Manager (Current Branch). You add the cloud management gateway connector point to the deployment. Which site system role can be configured to receive the traffic from the cloud management gateway?

- A. Software update point
- B. Asset Intelligence synchronization point
- C. Service connection point
- D. Distribution point

Answer: A

Explanation: <https://www.systemcenterdudes.com/how-to-setup-an-sccm-cloud-management-gateway/>

NEW QUESTION 192

You have a deployment of System Center Configuration Manager (Current Branch).

You deploy several Microsoft Store for Business apps to client computers by using Configuration Manager. You purchase a new Microsoft Store for Business app named App1. App1 is licensed for offline use.

You need to ensure that you can deploy App1 immediately by using Configuration Manager. What should you do?

- A. From the Configuration Manager console, synchronize the Windows Store for Business.
- B. From the Microsoft Azure portal, add App1 to Azure Active Directory.
- C. From the Configuration Manager console, run the Azure Services Wizard.
- D. From Microsoft Intune in the Microsoft Azure portal, add App1 to Intune.

Answer: A

Explanation: References: <https://www.petervanderwoude.nl/post/windows-store-for-business-synchronized-with-configmgr/>

NEW QUESTION 194

You have a deployment of System Center Configuration Manager (Current Branch).

The software updates available in Configuration Manager are shown in the following table.

Update title	Product	Required
Update for Windows 10 (KB3125217)	Windows 10 LTSC, Windows 10	3
Security Update for Adobe Flash Player for Windows 10 (KB4014329)	Windows 10 LTSC, Windows 10	5
Definition Update for Windows Defender - KB2267602 (Definition 1.239.999.0)	Windows Default	10
Update for Windows 10 (KB3173427)	Windows 10 LTSC, Windows 10	0

You create the automatic deployment rules (ADRs) as shown in the following table.

ADR name	Software update search criteria	Deployment package to create
ADR1	Required : > 2 Title:- Adobe	Package1
ADR2	Product: "Windows 10" Title: update	Package1

You ran ADR1 and ADR2.

How many updates are in Package1 and Package2? To answer, select the appropriate options in the answer area.

NOTE: Each correct selection is worth one point.

Answer Area

Number of software updates in Package1:

Number of software updates in Package2:

Answer:

Explanation:

Answer Area

Number of software updates in Package1:

Number of software updates in Package2:

NEW QUESTION 196

You have a deployment of System Center Configuration Manager (Current Branch).

You discover that some users have an executable file named App1.exe configured to run at start up. You need to identify which computers have App1.exe configured to run at start up.

Which three actions should you perform in sequence? To answer, move the appropriate actions from the list of actions to the answer area and arrange them in the correct order.

Actions	Answer Area
Create a compliance policy	
Deploy a package to a collection	
Create a configuration item and add an assembly	
Deploy a configuration baseline to a collection	
Create a package	
Create a configuration baseline	
Create a configuration item that has a registry value and a compliance rule	

Answer:

Explanation:

Actions	Answer Area
Create a compliance policy	Create a configuration item that has a registry value and a compliance rule
Deploy a package to a collection	
Create a configuration item and add an assembly	Create a configuration baseline
Deploy a configuration baseline to a collection	
Create a package	Deploy a configuration baseline to a collection
Create a configuration baseline	
Create a configuration item that has a registry value and a compliance rule	

NEW QUESTION 200

Note: This question is part of a series of questions that present the same scenario. Each question in the series contains a unique solution that might meet the stated goals. Some question sets might have more than one correct solution, while others might not have a correct solution.

After you answer a question in this section, you will NOT be able to return to it. As a result, these questions will not appear in the review screen.

Your company uses a network ID of 10.0.0.0/8.

The company opens a new office that uses a network ID of 10.5.0.0/16. The office has three floors. Each floor has a VLAN. The network ID of each VLAN is 10.5.10.0/24, 10.5.20.0/24, and 10.5.30.0/24.

You create a distribution point for the new office.

You need to ensure that the clients in the new office obtain content from the new distribution point. Solution: Create an IP address range boundary from 10.5.0.0/16.

Does this meet the goal?

- A. Yes
- B. No

Answer: B

NEW QUESTION 201

You have a deployment of System Center Configuration Manager (Current Branch). You configure hybrid mobile device management (MDM).

Your company hires a new employee. The employee has an Apple iPhone.

You make several iOS apps available to the employee. The employee reports that the apps are unavailable on the iPhone.

You need to ensure that the employee can use the apps.

Which two actions should you instruct the employee to perform? To answer, drag the appropriate actions to the correct targets. Each action may be used once, more than once, or not at all. You may need to drag the split bar between panes or scroll to view content.

NOTE: Each correct selection is worth one point.

Actions

Enroll the device.

Add a license key.

Install a trusted root certificate.

Connect to the company's Wi-Fi network.

Install the Microsoft Intune Company Portal app.

Answer Area

First action:

Action

Second action:

Action

Answer:

Explanation: References: <https://docs.microsoft.com/en-us/sccm/mdm/deploy-use/enroll-user-owned-devices>

NEW QUESTION 203

You have a deployment of System Center Configuration Manager (Current Branch) that was implemented by a user named Admin1.

Configuration Manager includes the administrative users shown in the following table:

User name	Security role	Security scope
User1	Infrastructure Administrator	Default, Scope1
User2	Asset Manager	Scope1
User3	Full Administrator	Default
User4	Operating System Deployment Manager	Scope1
User5	Operating System Deployment Manager	Default
User6	Operations Administrator	Scope1
User7	Operations Administrator	Default
User8	Company Resource Access Manager	Default, Scope1

You add a boot image named Boot1 to Configuration Manager. You set the security scope of Boot1 to Scope1. Which user can create a task sequence that uses Boot1?

- A. User4
- B. User5
- C. User7
- D. User1

Answer: A

Explanation: References: <https://technet.microsoft.com/en-us/library/gg682108.aspx>

NEW QUESTION 206

Note: This question is part of a series of questions that present the same scenario. Each question in the series contains a unique solution that might meet the stated goals. Some question sets might have more than one correct solution, while others might not have a correct solution.

After you answer a question in this section, you will NOT be able to return to it. As a result, these questions will not appear in the review screen.

Your company has client computers that run either the 32-bit version of Windows 8 or the 64-bit version of Windows 10.

You need to install a line-of-business application to the computers. The 64-bit version of the application must be installed on the Windows 10 computers.

Solution: Create one application that has two deployment types. Configure a requirement for each deployment type.

Does this meet the goal?

- A. Yes
- B. No

Answer: A

Explanation: References:

<https://blogs.technet.microsoft.com/canitpro/2013/06/02/step-by-step-managing-multiple-versions-of-the-same-a>

NEW QUESTION 208

Note: This question is part of a series of questions that use the same scenario. For your convenience, the scenario is repeated in each question. Each question presents a different goal and answer choices, but the text of the scenario is exactly the same in each question in this series.

Start of repeated scenario.

Your network contains an Active directory forest named adatum.com.

All client computers run Windows 10 Enterprise. All the computers are named by using the name of their respective department and an incremental three-digit number. For example, the first computer in the sales department is named Sales001.

Several managers use tablets that run Windows 10 and have 3 GB of RAM. All other client computers have at least 8 GB RAM.

Adatum.com is synchronized to Microsoft Azure Active Directory. Your company implements the Microsoft Store for Business.

You have a deployment of System Center Configuration Manager (Current Branch) that has discovery configured. All the client computers have the Configuration Manager client installed.

The company uses the applications shown in the following table.

Application Name	Description
App1	A Microsoft Application Virtualization (APP-V) virtual application
App2	An app that the company purchased from the Microsoft Store for Business and is licensed for offline use
App3	A 64-bit application that is deployed to all the client computers
SalesAppLite	An application used by users in the sale department on computers that have 3 GB of Ram or less
SalesAppFull	An application used by users in the sale department on computers that have more than 3 GB of Ram.

The company identifies the following requirements for software deployments:

- ▶ View the Upgrade Readiness data of all the client computers.
- ▶ Deploy App1 to the client computers in the marketing department.
- ▶ Deploy App2 to the client computers in the human resources (HR) department.
- ▶ Monitor the usage of App3.
- ▶ Deploy SalesAppLite to sales department computers that have 3 GB of RAM or less.
- ▶ Deploy SalesAppFull to sales department computers that have more than 3 GB of RAM.

You create a cloud-based distribution point that has a public name of d1594d4527614a09b934d470. End of repeated scenario.

You need to create the DNS record in adatum.com for the cloud-based distribution point. What should you configure? To answer, select the appropriate options in the answer area. NOTE: Each correct selection is worth one point.

Answer Area

Record type:

Alias(CNAME)

Host (A or AAAA)

Host information (HINFO)

Service location (SRV)

Well known services (WKS)

Name to reference:

d1594d4527614a09b934d470.azure.com

d1594d4527614a09b934d470.cloudapp.net

d1594d4527614a09b934d470.core.windows.net

d1594d4527614a09b934d470.manage.microsoft.com

d1594d4527614a09b934d470.onmicrosoft.com

Answer:

Explanation: References:
<https://docs.microsoft.com/en-us/sccm/core/servers/deploy/configure/install-cloud-based-distribution-points-in->

NEW QUESTION 209

Your company has offices in New York and London. All client computers run Windows 10. You have a deployment of System Center Configuration Manager (Current Branch) that you use to manage the computers. The company has the applications shown in the following table.

Application Name	Description
App1	Installed by using an Windows Installer (MSI) package
App2	Installed by using an Windows Installer (MSI) package and dependent on App1
App3	Installed by using an executable file named Setup.exe

You need to deploy the applications to meet the following requirements:

- ▶ Deploy App2 to all the computers in the New York office.
- ▶ Deploy App3 to all the computers in the London office.
- ▶ Minimize administrative effort.

What should you create in Configuration Manager for each deployment? To answer, drag the appropriate options to the correct applications. Each option may be used once, more than once, or not at all. You may need to drag the split bar between panes or scroll to view content.
NOTE: Each correct selection is worth one point.

Options

an application

a deployment package

a package

a software update group

Answer Area

App2:

Option

App3:

Option

Answer:

Explanation: References: <https://docs.microsoft.com/en-us/sccm/apps/deploy-use/create-applications> <https://docs.microsoft.com/en-us/sccm/apps/deploy-use/packages-and-programs>

NEW QUESTION 214

You have a deployment of System Center Configuration Manager (Current Branch).
You need to ensure that the CIO of your company automatically receives the Antimalware overall status and history report by email every week.
What should you do first?

- A. Configure the SMTP Settings in Microsoft SQL Server Reporting Services (SSRS).
- B. Create a subscription in Configuration Manager.
- C. Configure the execution account for Microsoft SQL Server Reporting Services (SSRS).
- D. Configure the Subscription Schedule in Configuration Manager.

Answer: B

Explanation: References:
<https://github.com/MicrosoftDocs/SCCMdocs/blob/master/sccm/core/servers/manage/operations-and-maintenan>

NEW QUESTION 219

Note: This question is part of a series of questions that use the same scenario. For your convenience, the scenario is repeated in each question. Each question presents a different goal and answer choices, but the text of the scenario is exactly the same in each question in this series.

Start of repeated scenario.

Your network contains an Active directory forest named adatum.com.

All client computers run Windows 10 Enterprise. All the computers are named by using the name of their respective department and an incremental three-digit number. For example, the first computer in the sales department is named Sales001.

Several managers use tablets that run Windows 10 and have 3 GB of RAM. All other client computers have at least 8 GB RAM.

Adatum.com is synchronized to Microsoft Azure Active Directory. Your company implements the Microsoft Store for Business.

You have a deployment of System Center Configuration Manager (Current Branch) that has discovery configured. All the client computers have the Configuration Manager client installed.

The company uses the applications shown in the following table.

Application Name	Description
App1	A Microsoft Application Virtualization (APP-V) virtual application
App2	An app that the company purchased from the Microsoft Store for Business and is licensed for offline use
App3	A 64-bit application that is deployed to all the client computers
SalesAppLite	An application used by users in the sale department on computers that have 3 GB of Ram or less
SalesAppFull	An application used by users in the sale department on computers that have more than 3 GB of Ram.

The company identifies the following requirements for software deployments:

- ▶ View the Upgrade Readiness data of all the client computers.
- ▶ Deploy App1 to the client computers in the marketing department.
- ▶ Deploy App2 to the client computers in the human resources (HR) department.
- ▶ Monitor the usage of App3.
- ▶ Deploy SalesAppLite to sales department computers that have 3 GB of RAM or less.
- ▶ Deploy SalesAppFull to sales department computers that have more than 3 GB of RAM.

You create a cloud-based distribution point that has a public name of d1594d4527614a09b934d470. End of repeated scenario.

You need to create the Upgrade Readiness report.

Which Group Policy object (GPO) setting should you configure?

- A. Diagnostics: Configure Scenario Execution Level
- B. Specify intranet Microsoft update service location
- C. Configure the Commercial ID
- D. Configure forwarder resource usage
- E. Audit Other Account Logon Events

Answer: C

Explanation: References: <https://www.anoopcnaair.com/methods-to-configure-telemetry-for-upgrade-readiness/>

NEW QUESTION 223

Note: This question is part of a series of questions that present the same scenario. Each question in the series contains a unique solution that might meet the stated goals. Some question sets might have more than one correct solution, while others might not have a correct solution.

After you answer a question in this section, you will NOT be able to return to it. As a result, these questions will not appear in the review screen.
 You deploy the first primary site server to your organization. Discovery is not configured. You need to deploy the Configuration Manager client to five client computers in a workgroup. Solution: You deploy the client by using a Group Policy installation.
 Does this meet the goal?

- A. Yes
- B. No

Answer: B

Explanation: References: <https://docs.microsoft.com/en-us/sccm/core/clients/deploy/deploy-clients-to-windows-computers>

NEW QUESTION 227

You have a deployment of System Center Configuration Manager (Current Branch). You have the collections shown in the following table.

Collection name	Members
Collection1	Computer1,Computer2,Computer3
Collection2	Computer1,Computer4,Computer6
Collection3	Computer2,Computer5,Computer7

You create a new collection that has the following configurations:

- ▶ Collection name: Collection4
- ▶ Limiting collection: Collection1
- ▶ Include Collections rule: Collection2
- ▶ Exclude Collections rule: Collection3

What will Collection4 contain?

- A. Computer1, Computer2, and Computer3 only
- B. Computer1, Computer4, and Computer6 only
- C. Computer1 only
- D. Computer1, Computer2, Computer3, Computer4, and Computer6

Answer: D

Explanation: References: <https://technet.microsoft.com/en-us/library/gg712295.aspx>

NEW QUESTION 232

Note: This question is part of a series of questions that use the same scenario. For your convenience, the scenario is repeated in each question. Each question presents a different goal and answer choices, but the text of the scenario is exactly the same in each question in this series.

Start of repeated scenario.

Your network contains an Active directory forest named adatum.com.

All client computers run Windows 10 Enterprise. All the computers are named by using the name of their respective department and an incremental three-digit number. For example, the first computer in the sales department is named Sales001.

Several managers use tablets that run Windows 10 and have 3 GB of RAM. All other client computers have at least 8 GB RAM.

Adatum.com is synchronized to Microsoft Azure Active Directory. Your company implements the Microsoft Store for Business.

You have a deployment of System Center Configuration Manager (Current Branch) that has discovery configured. All the client computers have the Configuration Manager client installed.

The company uses the applications shown in the following table.

Application Name	Description
App1	A Microsoft Application Virtualization (APP-V) virtual application
App2	An app that the company purchased from the Microsoft Store for Business and is licensed for offline use
App3	A 64-bit application that is deployed to all the client computers
SalesAppLite	An application used by users in the sale department on computers that have 3 GB of Ram or less
SalesAppFull	An application used by users in the sale department on computers that have more than 3 GB of Ram.

The company identifies the following requirements for software deployments:

- ▶ View the Upgrade Readiness data of all the client computers.
- ▶ Deploy App1 to the client computers in the marketing department.
- ▶ Deploy App2 to the client computers in the human resources (HR) department.
- ▶ Monitor the usage of App3.
- ▶

Deploy SalesAppLite to sales department computers that have 3 GB of RAM or less.
 Deploy SalesAppFull to sales department computers that have more than 3 GB of RAM.
 You create a cloud-based distribution point that has a public name of d1594d4527614a09b934d470. End of repeated scenario.
 The company creates a new department named research.
 You need to deploy App2 and App3 to the client computers in the research department.
 How should you configure the membership rule for the Research collection? To answer, select the appropriate options in the answer area.
 NOTE: Each correct selection is worth one point.

Answer Area

System Resource.Name

is euqal to

is greater than

is greater than or equal to

is less than

is less then or euqal to

is like

is not equal to

is not like

Research%

Research*

Research???

Research_

Answer:

Explanation: References: <https://technet.microsoft.com/en-us/library/hh967533.aspx> <https://technet.microsoft.com/en-us/library/gg712323.aspx>

NEW QUESTION 237

Your network contains an Active Directory forest named adatum.com that has an enterprise certification authority (CA) named CA1. The certificate revocation list (CRL) is published to Active Directory and to a website.
 You deploy on-premises mobile device management (MDM) by using System Center Configuration Manager (Current Branch).
 The Configuration Manager site systems use certificates issued by CA1. You have the devices shown in the following table.

Device name	Operating system	Member of
Device1	Windows 8.1 Enterprise	Adatum.com
Device2	Windows 10 Pro	A workgroup

You need to enroll Device1 and Device2 to the on-premises MDM.
 What should you do before you can enroll each device? To answer, select the appropriate options in the answer area.
 NOTE: Each correct selection is worth one point.

Device1:

Add CA1 as a trusted root CA

Request a certificate from CA1

Upgrade the operating system

Install a Configuration Manager agent

Device2:

Add CA1 as a trusted root CA

Request a certificate from CA1

Upgrade the operating system

Install a Configuration Manager agent

Answer:

Explanation: https://docs.microsoft.com/en-us/sccm/mdm/deploy-use/user-enroll-devices-on-premises-mdm#bkmk_enrollDes <https://docs.microsoft.com/en-us/sccm/mdm/get-started/set-up-device-enrollment-on-premises-mdm>

NEW QUESTION 240

Note: This question is part of a series of questions that present the same scenario. Each question in the series contains a unique solution that might meet the

stated goals. Some question sets might have more than one correct solution, while others might not have a correct solution. After you answer a question in this section, you will NOT be able to return to it. As a result, these questions will not appear in the review screen. You have a deployment of System Center Configuration Manager that collects the hardware inventory of Windows and Linux client computers. You need to capture additional information about the hardware on the Linux computers. Solution: You extend the inventory by adding a new inventory class. Does this meet the goal?

- A. Yes
- B. No

Answer: A

Explanation: References: <https://docs.microsoft.com/en-us/sccm/core/clients/manage/inventory/extend-hardware-inventory>

NEW QUESTION 243

You deploy the System Center Configuration Manager client to all domain-joined computers that run Windows. From Resource Explorer, you view the hardware and software inventory information of the computers. When you run the Hardware 07A – USB Devices by Manufacturer report, the report does not produce any results. What should you do to ensure that the report contains results?

- A. Enable Asset Intelligence hardware inventory reporting classes.
- B. Enable software metering on the clients.
- C. Configure the Summarize Installed Software Data maintenance task.
- D. Configure an Asset Intelligence synchronization point.

Answer: A

Explanation: References: <https://docs.microsoft.com/en-us/sccm/core/clients/manage/asset-intelligence/introduction-to-asset-intelligence> <https://docs.microsoft.com/en-us/sccm/core/clients/manage/asset-intelligence/configuring-asset-intelligence>

NEW QUESTION 244

Note: This question is part of a series of questions that present the same scenario. Each question in the series contains a unique solution that might meet the stated goals. Some question sets might have more than one correct solution, while others might not have a correct solution. After you answer a question in this section, you will NOT be able to return to it. As a result, these questions will not appear in the review screen. You have a deployment of System Center Configuration Manager (Current Branch). You configure a cloud management gateway for Configuration Manager. You have a client computer that is currently on the corporate network. You need to force the computer to get the location of the cloud management gateway immediately. Solution: You run the Get-cloudDistributionPoint cmdlet. Does this meet the goal?

- A. Yes
- B. No

Answer: B

NEW QUESTION 245

You have a deployment of System Center Configuration Manager (Current Branch). You need to ensure that help desk users can use the Configuration Manager console to remotely control Configuration Manager clients. Which two actions should you perform? Each correct answer presents part of the solution. NOTE: Each correct selection is worth one point.

- A. Add the help desk users to the local Administrators group on each client computer.
- B. Enable Remote Desktop on the client computers.
- C. Configure a client settings policy.
- D. Allow connections to TCP port 2701 on the client computers.
- E. Allow connections to TCP port 3389 on the client computers.

Answer: CE

Explanation: References: <https://docs.microsoft.com/en-us/sccm/core/clients/manage/remote-control/configuring-remote-control> <https://technet.microsoft.com/en-us/library/bb632618.aspx>

NEW QUESTION 246

You have a deployment of System Center Configuration Manager (Current Branch). Your company has a main office and a branch office. The branch office has five users. Some users use laptops and some users use desktop computers. All the servers for the company are located in the main office. The branch office connects to the main office by using a VPN over a DSL connection to the main office. You need to minimize the bandwidth used to deploy updates to branch office clients over the VPN connection. The solution must minimize costs. What should you configure in the branch office?

- A. a distribution point
- B. a software update point
- C. a secondary site server
- D. a cloud-based distribution point

Answer: C

Explanation: References: <https://docs.microsoft.com/en-us/sccm/core/plan-design/hierarchy/design-a-hierarchy-of-sites>

NEW QUESTION 251

You deploy System Center Configuration Manager (Current Branch). You need to implement the co-management of Windows 10 devices. Which two components should you deploy before you can configure co-management? Each correct answer presents part of the solution.
NOTE: Each correct selection is worth one point.

- A. a cloud management gateway
- B. the Microsoft Operations Management Suite (OMS) connector
- C. a Microsoft Intune subscription
- D. the Microsoft Store for Business
- E. a Microsoft Office 365 subscription

Answer: AC

Explanation: References: <https://docs.microsoft.com/en-us/sccm/core/clients/manage/co-management-prepare>

NEW QUESTION 254

You have a deployment of System Center Configuration Manager (Current Branch). You plan to implement hybrid mobile device management (MDM). Which cloud service should you provision?

- A. Microsoft Operations Manager Suite (OMS)
- B. Microsoft Store for Business
- C. Microsoft Intune
- D. Microsoft Azure

Answer: C

NEW QUESTION 258

Note: This question is part of a series of questions that use the same scenario. For your convenience, the scenario is repeated in each question. Each question presents a different goal and answer choices, but the text of the scenario is exactly the same in each question in this series.
Start of repeated scenario.

You work for a company named ADatum Corporation.

The ADatum network contains an Active Directory domain named adatum.com.

You have a partner company named Contoso, Ltd. The Contoso network contains an Active Directory domain named adatum.com.

All the client computers at both companies run Windows 10.

Each company has a deployment of System Center Configuration Manager (Current Branch). ADatum has sales and IT departments. ADatum has a collection for each department.

Contoso has research, marketing, and human resources (HR) departments. Contoso has a collection for each department.

ADatum purchases Contoso.

You configure on-premises mobile device management (MDM) in adatum.com. You enroll the client computers in the IT department into on-premises MDM.

You configure hybrid MDM in contoso.com. End of repeated scenario.

You need to ensure that when the users at Contoso enroll into MDM, they accept the usage policy of Contoso. What should you do?

- A. From Microsoft Intune in the Microsoft Azure portal, click Device compliance and configure the Compliance policy settings.
- B. From the Configuration Manager console, open the Assets and Compliance workspace and configure the terms and conditions.
- C. From Microsoft Intune in the Microsoft Azure portal, click Device enrollment and configure the terms and conditions.
- D. From the Configuration manager console, open the Assets and Compliance workspace and configure a compliance policy.

Answer: B

Explanation: References: <https://docs.microsoft.com/en-us/sccm/mdm/deploy-use/terms-and-conditions>

NEW QUESTION 261

.....

Thank You for Trying Our Product

We offer two products:

1st - We have Practice Tests Software with Actual Exam Questions

2nd - Questons and Answers in PDF Format

70-703 Practice Exam Features:

- * 70-703 Questions and Answers Updated Frequently
- * 70-703 Practice Questions Verified by Expert Senior Certified Staff
- * 70-703 Most Realistic Questions that Guarantee you a Pass on Your FirstTry
- * 70-703 Practice Test Questions in Multiple Choice Formats and Updatesfor 1 Year

100% Actual & Verified — Instant Download, Please Click
[Order The 70-703 Practice Test Here](#)