



Microsoft

Exam Questions 70-703

Administering Microsoft System Center Configuration Manager and Cloud Services Integration



You have a deployment of System Center Configuration Manager (Current Branch) that contains a primary site server named CM01. You have a line-of-business application named App1 that is a Microsoft Application Virtualization (App-V) package. The media for App1 is in the D:\Sources\AppV\App1 folder on CM01. The D:\Sources folder is shared as Sources\$. You need to create a new Configuration Manager application for the deployment of App1. How should you complete the command? To answer, select the appropriate options in the answer area. NOTE: Each correct selection is worth one point.

 Add-CMAppv5XDeploymentType Get-CMApplication Get-CMPackage New-CMApplication New-CMPackage New-CMProgram	- name "App1"
 Add-CMAppv5XDeploymentType Get-CMApplication Get-CMPackage New-CMApplication New-CMPackage New-CMProgram	-ContentLocation \\CM01\source\$\Appv\app1 -DeploymentTypeName "Install App1"

Explanation: References:
<https://docs.microsoft.com/en-us/powershell/module/configurationmanager/new-cmapplication?view=sccm-ps> <https://docs.microsoft.com/en-us/powershell/module/configurationmanager/add-cmappv5xdeploymenttype?view=sccm-ps>

Note: This question is part of a series of questions that present the same scenario. Each question in the series contains a unique solution that might meet the stated goals. Some question sets might have more than one correct solution, while others might not have a correct solution.

After you answer a question in this section, you will NOT be able to return to it. As a result, these questions will not appear in the review screen.

Your company uses a network ID of 10.0.0.0/8.

The company opens a new office that uses a network ID of 10.5.0.0/16. The office has three floors. Each floor has a VLAN. The network ID of each VLAN is 10.5.10.0/24, 10.5.20.0/24, and 10.5.30.0/24.

You create a distribution point for the new office.

You plan to distribute content to clients in the new office from the new distribution point. You need to create a boundary for the new office.

Solution: Create an IP subnet boundary for 10.5.0.0/16. Does this meet the goal?

- Answer: A**

A. Yes
B. No

Answer: B

NEW QUESTION 4

You have a deployment of System Center Configuration Manager (Current Branch). You configure hybrid mobile device management (MDM). You use Configuration Manager to manage Apple iOS and Android devices. You need to prevent users of the devices from incurring roaming data charges. What should you configure for each device? To answer, drag the appropriate configurations to the correct devices. Each configuration may be used once, more than once, or not at all. You may need to drag the split bar between panes or scroll to view content.
 NOTE: Each correct selection is worth one point.

Configurations	Answer Area
A client device setting	Android devices: Configuration
A client user setting	iOS devices: Configuration
A configuration item	
A Configuration Manager application	
A VPN profile	
A Wi-Fi profile	

Answer:

Explanation: References:

<https://docs.microsoft.com/en-us/sccm/mdm/deploy-use/create-configuration-items-for-android-and-samsung-kn> <https://docs.microsoft.com/en-us/sccm/mdm/deploy-use/create-configuration-items-for-ios-and-mac-os-x-device>

NEW QUESTION 5

You have a deployment of System Center Configuration Manager (Current Branch). You need to create a task sequence to deploy Windows 10. Which two components should you include in the task sequence? Each correct answer presents part of the solution.
 NOTE: Each correct selection is worth one point.

- A. a driver package
- B. an operating system image
- C. software updates
- D. a boot image

Answer: BD

Explanation: References:

<https://docs.microsoft.com/en-us/sccm/osd/deploy-use/create-a-task-sequence-to-install-an-operating-system>

NEW QUESTION 6

Note: This question is part of a series of questions that use the same scenario. For your convenience, the scenario is repeated in each question. Each question presents a different goal and answer choices, but the text of the scenario is exactly the same in each question in this series.

Start of repeated scenario.

You work for a company named ADatum Corporation.

The ADatum network contains an Active Directory domain named adatum.com.

You have a partner company named Contoso, Ltd. The Contoso network contains an Active Directory domain named adatum.com.

All the client computers at both companies run Windows 10.

Each company has a deployment of System Center Configuration Manager (Current Branch). ADatum has sales and IT departments. ADatum has a collection for each department.

Contoso has research, marketing, and human resources (HR) departments. Contoso has a collection for each department.

ADatum purchases Contoso.

You configure on-premises mobile device management (MDM) in adatum.com. You enroll the client computers in the IT department into on-premises MDM.

You configure hybrid MDM in contoso.com. End of repeated scenario.

You need to view a detailed hardware inventory of an IT department computer that is currently offline. Which tool should you use?

- A. Resource Explorer
- B. Device Manager
- C. Microsoft Intune in the Microsoft Azure portal
- D. the Microsoft Azure portal

Answer: A

Explanation: References: <https://technet.microsoft.com/en-us/library/gg712311.aspx>

NEW QUESTION 7

You deploy System Center Configuration Manager (Current Branch). You have client computers that run either Windows 7 or Windows 10. You need to deploy the Configuration Manager client to meet the following requirements:

- Install the client on the Windows 7 computers the next time the computers restart.
- How should you deploy each client? To answer, select the appropriate options in the answer area. NOTE: Each correct selection is worth one point.

Answer Area

Windows 7:

Use client push installation

Deploy the client to a collection

Run ccmsetup.exe from a command line.

Enable an automatic site-wide client push installation.

Create a Group Policy object (GPO) that runs a startup script.

Windows 10:

Use client push installation

Deploy the client to a collection

Run ccmsetup.exe from a command line.

Enable an automatic site-wide client push installation.

Create a Group Policy object (GPO) that runs a startup script.

Answer:

Explanation: References: <https://technet.microsoft.com/en-us/library/gg712298.aspx>

NEW QUESTION 8

You have a deployment of System Center Configuration Manager (Current Branch). The domain contains the users shown in the following table.

User name	Members of
User1	Domain Users
User2	Help Desk Users
User3	Enterprise Admins
User4	Support Techs

Support Techs is a member of the Administrators group on each client computer. Help Desk Users is a member of the Power Users group on each client computer.

You need to deploy Configuration Manager agents by using a client push installation. The solution must use the principle of least privilege. Which user should you configure as the client push installation account?

- A. User1
- B. User2
- C. User3
- D. User4

Answer: D

NEW QUESTION 9

You have a deployment of System Center Configuration Manager (Current Branch). The Install Behavior for applications feature is enabled. You have a line-of-business application named App1. Version 1.0 of App1 is deployed currently. You need to upgrade App1 to version 2.0. Version 2.0 must be prevented from installing if App1.exe is running. What should you do?

- A. Create a virtual application for version 2.0 of App1. Create a detection method for App1.exe.
- B. Create an application for version 2.0 of App1. Modify the Deployment Types and the Install Behavior settings.
- C. Modify the Deployment Types and the Install Behavior settings for version 1.0 of App1.
- D. Create a virtual application for version 1.0 of App1. Create a detection method for App1.exe.

Answer: C

Explanation: References:

<https://docs.microsoft.com/en-us/sccm/apps/deploy-use/deploy-applications#how-to-check-for-running-executab>

NEW QUESTION 10

Note: This question is part of a series of questions that present the same scenario. Each question in the series contains a unique solution that might meet the stated goals. Some question sets might have more than one correct solution, while others might not have a correct solution.

After you answer a question in this section, you will NOT be able to return to it. As a result, these questions will not appear in the review screen.

Your company uses a network ID of 10.0.0.0/8.

The company opens a new office that uses a network ID of 10.5.0.0/16. The office has three floors. Each floor has a VLAN. The network ID of each VLAN is 10.5.10.0/24, 10.5.20.0/24, and 10.5.30.0/24.

You create a distribution point for the new office.

You need to ensure that the clients in the new office obtain content from the new distribution point. Solution: Create an Active Directory site associated to the 10.5.0.0/16 subnet, and then create an Active Directory site boundary.

Does this meet the goal?

- A. Yes
- B. No

Answer: B

NEW QUESTION 10

Note: This question is part of a series of questions that present the same scenario. Each question in the series contains a unique solution that might meet the stated goals. Some question sets might have more than one correct solution, while others might not have a correct solution.

After you answer a question in this section, you will NOT be able to return to it. As a result, these questions will not appear in the review screen.

Your company uses a network ID of 10.0.0.0/8.

The company opens a new office that uses a network ID of 10.5.0.0/16. The office has three floors. Each floor has a VLAN. The network ID of each VLAN is 10.5.10.0/24, 10.5.20.0/24, and 10.5.30.0/24.

You create a distribution point for the new office.

You plan to distribute content to clients in the new office from the new distribution point. You need to create a boundary for the new office.

Solution: Create an IP subnet boundary for 10.5.10.0/24, 10.5.20.0/24, and 10.5.30.0/24. Does this meet the goal?

- A. Yes
- B. No

Answer: B

NEW QUESTION 13

Note: This question is part of a series of questions that present the same scenario. Each question in the series contains a unique solution that might meet the stated goals. Some question sets might have more than one correct solution, while others might not have a correct solution.

After you answer a question in this section, you will NOT be able to return to it. As a result, these questions will not appear in the review screen.

Your company has client computers that run either the 32-bit version of Windows 8 or the 64-bit version of Windows 10.

You need to install a line-of-business application to the computers. The 64-bit version of the application must be installed on the Windows 10 computers.

Solution: Create two applications that each has one deployment type. Configure a requirement for each deployment type.

Does this meet the goal?

- A. Yes
- B. No

Answer: B

Explanation: References:

<https://blogs.technet.microsoft.com/canitpro/2013/06/02/step-by-step-managing-multiple-versions-of-the-same-a>

NEW QUESTION 14

Note: This question is part of a series of questions that present the same scenario. Each question in the series contains a unique solution that might meet the stated goals. Some question sets might have more than one correct solution, while others might not have a correct solution.

After you answer a question in this section, you will NOT be able to return to it. As a result, these questions will not appear in the review screen.

Your company has client computers that run either the 32-bit version of Windows 8 or the 64-bit version of Windows 10.

You need to install a line-of-business application to the computers. The 64-bit version of the application must be installed on the Windows 10 computers.

Solution: Create one application that has one deployment type. Configure two requirements for the deployment type.

Does this meet the goal?

- A. Yes
- B. No

Answer: B

Explanation: References:

<https://blogs.technet.microsoft.com/canitpro/2013/06/02/step-by-step-managing-multiple-versions-of-the-same-a>

NEW QUESTION 19

You have a deployment of System Center Configuration Manager (Current Branch). You configure the environment for co-management.

You need to install the Configuration Manager client on all computers that are enrolled in Microsoft Intune. Which three actions should you perform? Each correct answer presents part of the solution.

NOTE: Each correct selection is worth one point.

- A. Distribute the Configuration Manager client installation files to the cloud-based distribution point.
- B. From Intune, deploy an app that contains Ccmsetup.msi.
- C. From Configuration Manager, deploy a cloud-based distribution point.
- D. From Configuration Manager, enable site-wide client push installation.
- E. From Intune, deploy an app that contains Client.msi.

Answer: BDE

NEW QUESTION 23

You use System Center Configuration Manager (Current Branch) to manage client computers that run Windows 7. You have a Microsoft Application Visualization {App-V} package named Appl.

You need to deploy App1 to the computers by using Configuration Manager and ensure that the App1 runs. What should you do first?

- A. Install the App-V Sequencer on a reference computer.
- B. From the Configuration Manager console, create an App-V virtual environment.
- C. Deploy the App-V client to the computers.
- D. Configure the Enable App-V Client setting by using a Group Policy object (GPO).

Answer: D

Explanation: References:

<https://docs.microsoft.com/en-us/windows/application-management/app-v/appv-enable-the-app-v-desktop-client>

NEW QUESTION 26

You have a deployment of System Center Configuration Manager (Current Branch). You configure hybrid mobile device management (MDM).

You need to enroll company-owned Android devices into MDM. What should you do first?

- A. Install the Company Portal app on the Android devices.
- B. Create predeclared devices in Configuration Manager.
- C. Create computer objects in Active Directory for the Android devices.
- D. Purchase a Microsoft Office 365 subscription.

Answer: B

Explanation: References: <https://docs.microsoft.com/en-us/sccm/mdm/deploy-use/predeclare-devices-with-hardware-id>

NEW QUESTION 31

You have a deployment of System Center Configuration Manager (Current Branch).

Your company has a main office and a branch office. The branch office has five users. Some users use laptops and some use desktop computers.

All the servers for the company are located in the main office. The branch office connects to the main office by using a VPN over a DSL connection to the main office.

You need to minimize the bandwidth used to deploy updates to branch office clients over the VPN connection. The solution must minimize costs.

- A. a pull-distribution point
- B. a cloud management gateway
- C. BranchCache
- D. a cloud-based distribution point

Answer: C

Explanation: References: <https://docs.microsoft.com/en-us/sccm/core/plan-design/hierarchy/design-a-hierarchy-of-sites>

NEW QUESTION 35

Your network contains an Active Directory forest named adatum.com. All client computers run Windows 10. You have a deployment of System Center Configuration Manager (Current Branch) that contains a primary site named S01. S01 contains the servers shown in the following table.

Server name	Site system role
Server 1	Software update point
Server 2	Distribution point
Server 3	Service connection point

You plan to use Configuration Manager to deploy software updates. You create a software update group named UpdateGroup1.

You need to ensure that you can deploy express installation files to the client computers.

What should you configure?

- A. the Software update point Properties of Server1
- B. the Distribution point Properties of Server2
- C. the Software Update Point Component Properties of S01
- D. the Service connection point Properties of Server3

Answer: A

Explanation: References:

<https://docs.microsoft.com/en-us/sccm/sum/deploy-use/manage-express-installation-files-for-windows-10-updat>

NEW QUESTION 40

You have a deployment of System Center Configuration Manager (Current Branch). You configure hybrid mobile device management (MDM). You run WINVER on client computer named Computer1 as shown in the following exhibit.



You need to create a compliance policy that has a condition specifying a minimum version of the operating system. The condition must use the same operating system version as Computer1.

Which version should you specify in the condition?

- A. 10.0.16299.15
- B. 10.0.1709
- C. 10.1709
- D. 10.1709.16299.15

Answer: A

Explanation: References: <https://docs.microsoft.com/en-us/intune/compliance-policy-create-windows>

NEW QUESTION 45

Note: This question is part of a series of questions that present the same scenario. Each question in the series contains a unique solution that might meet the stated goals. Some question sets might have more than one correct solution, while others might not have a correct solution.

After you answer a question in this section, you will NOT be able to return to it. As a result, these questions will not appear in the review screen.

You have a deployment of System Center Configuration Manager (Current Branch). You configure a cloud management gateway for Configuration Manager.

You have a client computer that is currently on the corporate network.

You need to force the computer to get the location of the cloud management gateway immediately. Solution: You restart the Network Location Awareness service. Does this meet the goal?

- A. Yes
- B. No

Answer: B

NEW QUESTION 47

Note: This question is part of a series of questions that present the same scenario. Each question in the series contains a unique solution that might meet the stated goals. Some question sets might have more than one correct solution, while others might not have a correct solution.

After you answer a question in this section, you will NOT be able to return to it. As a result, these questions will not appear in the review screen.

You have a deployment of System Center Configuration Manager that collects the hardware inventory of Windows and Linux client computers.

You need to capture additional information about the hardware on the Linux computers. Solution: You extend the inventory by importing a new inventory class. Does this meet the goal?

- A. Yes
- B. No

Answer: A

NEW QUESTION 48

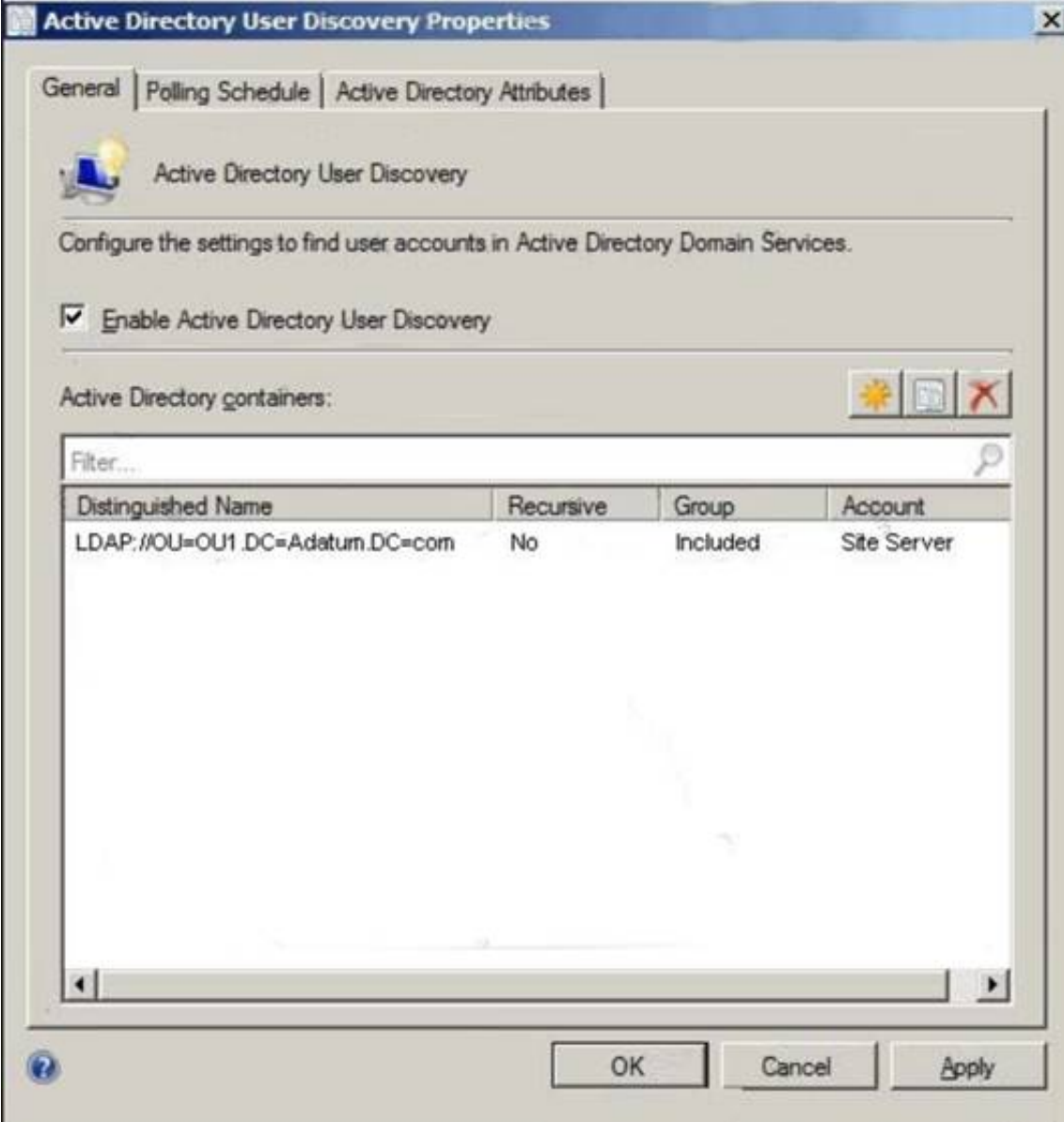
Your network contains an Active Directory forest named adatum.com. The forest has a deployment of System Center Configuration Manager (Current Branch). The adatum.com domain contains the organizational units (OUs) shown in the following table.

OU name	Parent
OU1	Adatum.com
OU2	Adatum.com
OU11	OU1

The adatum.com domain contains the groups shown in the following table.

Group Name	OU
Group 1	OU1
Group2	OU11

Active Directory User Discovery is configured as shown in the exhibit. (Click the Exhibit button.) Exhibit:



You preform the following actions:

- ▶ Create a user named User1 in OU11.
- ▶ Create a user named User2 in OU2 in OU2 and add User2 to Group2.
- ▶ Create a user named User3 in OU2 and add User3 to Group1.

For each of the following statements, select Yes if the statement is true. Otherwise, select False. NOTE: Each correct selection is worth one point.

Answer Area

Statements	Yes	No
Configuration Manager will discover User1.	<input type="radio"/>	<input type="radio"/>
Configuration Manager will discover User2.	<input type="radio"/>	<input type="radio"/>
Configuration Manager will discover User3.	<input type="radio"/>	<input type="radio"/>

Answer:

Explanation: References: <https://technet.microsoft.com/en-us/library/bb693489.aspx>

NEW QUESTION 53

You have a deployment of System Center Configuration Manager (Current Branch). You add the cloud management gateway connector point to the deployment. Which site system role can be configured to receive the traffic from the cloud management gateway?

- A. Service connection point
- B. Distribution point
- C. Management point
- D. Endpoint Protection point

Answer: C

Explanation: References: <https://www.systemcenterdudes.com/how-to-setup-an-sccm-cloud-management-gateway/>

NEW QUESTION 54

Note: This question is part of a series of questions that present the same scenario. Each question in the series contains a unique solution that might meet the stated goals. Some question sets might have more than one correct solution, while others might not have a correct solution.

After you answer a question in this section, you will NOT be able to return to it. As a result, these questions will not appear in the review screen.

You have a deployment of System Center Configuration Manager (Current Branch). You configure hybrid mobile device management (MDM).

You have a support technician named User1. Your company purchases 300 Apple iPhones.

You need to ensure that User1 can enroll the iPhones.

Solution: From a web browser, you request an Enrollment Agent certificate from a certification authority (CA).

Does this meet the goal?

- A. Yes
- B. No

Answer: B

Explanation: References:

<https://docs.microsoft.com/en-us/sccm/mdm/deploy-use/enroll-devices-with-device-enrollment-manager>

NEW QUESTION 55

You have a deployment of System Center Configuration Manager (Current Branch). All client computers run Windows 7 and have the most recent updates installed. Configuration Manager and Microsoft Operations Manager Suite (OMS) are integrated.

You plan to use Upgrade Readiness to identify which computers support Windows 10. You need to ensure that the computers report data to OMS.

Which two actions should you perform? Each correct answer presents part of solution. NOTE: Each correct selection is worth one point.

- A. From Client Settings, configure a commercial ID key.
- B. Configure Asset Intelligence.
- C. From Client Settings, configure Windows telemetry.
- D. Configure a software inventory.
- E. Configure a hardware inventory.

Answer: AC

Explanation: References: <https://docs.microsoft.com/en-us/sccm/core/clients/manage/upgrade/upgrade-analytics>

<https://docs.microsoft.com/en-us/sccm/core/clients/manage/monitor-windows-analytics>

NEW QUESTION 60

Note: This question is part of a series of questions that present the same scenario. Each question in the series contains a unique solution that might meet the stated goals. Some question sets might have more than one correct solution, while others might not have a correct solution.

After you answer a question in this section, you will NOT be able to return to it. As a result, these questions will not appear in the review screen.

You have a deployment of System Center Configuration Manager (Current Branch). You configure hybrid mobile device management (MDM).

You enroll several Apple iOS devices and deploy compliance policies. One of the devices is marked as noncompliant.

You need to retrieve the logs from the device.

Solution: On the device, you open the Company Portal app, and then you manually synchronize. Does this meet the goal?

- A. Yes
- B. No

Answer: B

NEW QUESTION 64

You have a deployment of System Center Configuration Manager (Current Branch) that contains a primary site named S01. S01 has the Software update point site system role installed on a server named Server01 and the Distribution point site system role installed on a server named Server02.

You need to configure when Configuration Manager can install updates on the site system servers. What should you configure?

- A. the Properties of the S01 site
- B. the Distribution point Properties of Server02
- C. the Software update point Properties of Server01
- D. the Software Update Point Component Properties of S01

Answer: A

Explanation:

References: <https://docs.microsoft.com/en-us/sccm/sum/get-started/manage-settings-for-software-updates>

NEW QUESTION 65

You upgrade a Configuration Manager site by using Updates and Servicing. You do not upgrade the Configuration Manager client. You need to pilot the upgrade of the Configuration Manager client on 10 percent of the computers. What should you do?

- A. Create a collection that contains the pilot client
- B. From the Hierarchy Settings Properties, configure the Client Upgrade setting
- C. Modify the setting for the production client.
- D. Create a collection that contains the pilot client
- E. From the Hierarchy Settings Properties, configure the Client Upgrade setting
- F. Modify the setting for the pre-production client.
- G. In the Site Maintenance settings, modify the Clear Install Flag maintenance task
- H. From the Hierarchy Settings Properties, configure the Client Upgrade setting
- I. Modify the settings for the production client.
- J. Create an Active Directory security group that contains the pilot client
- K. In the Site Maintenance settings, modify the Update Application Available Targeting maintenance task.

Answer: B

Explanation: References: <https://docs.microsoft.com/en-us/sccm/core/clients/manage/upgrade/test-client-upgrades>

NEW QUESTION 67

You have a deployment of System Center Configuration Manager (Current Branch). Configuration Manager has the boundaries defined as shown in the following table.

Boundary name	Configuration	Type
Boundary1	Network: 192.168.128.0 Subnet mask: 255.255.0.0	IP subnet
Boundary2	Network: 172.16.128.0 Subnet mask: 255.255.255.0	IP subnet
Boundary3	172.16.10.15 to 172.16.10.100	IP address range
Boundary4	192.168.10.15 to 192.168.10.100	IP address range
Boundary5	fc07:45d4:5626:85b1	IPv6 prefix

Configuration Manager has the boundary groups defined as shown in the following table.

Boundary group name	Boundary
BG1	Boundary1, Boundary4
BG2	Boundary5
BG3	Boundary2, Boundary3

You install a new distribution point named DPI, and you add DPI to BG1 and BG3.

For each of the following statements, select Yes if the statement is true. Otherwise, select No. NOTE: Each correct selection is worth one point.

Answer Area

Statements	Yes	No
A client computer that has an IPv4 address of 172.16.10.12 can use DP1.	<input type="radio"/>	<input type="radio"/>
A client computer that has an IPv4 address of 192.168.130.12 can use DP1.	<input type="radio"/>	<input type="radio"/>
A client computer that has only an IPv6 address can use DP1.	<input type="radio"/>	<input type="radio"/>

Answer:

Explanation:

Answer Area	Statements	Yes	No
	A client computer that has an IPv4 address of 172.16.10.12 can use DP1.	<input type="radio"/>	<input checked="" type="radio"/>
	A client computer that has an IPv4 address of 192.168.130.12 can use DP1.	<input checked="" type="radio"/>	<input type="radio"/>
	A client computer that has only an IPv6 address can use DP1.	<input type="radio"/>	<input checked="" type="radio"/>

NEW QUESTION 70

You have a deployment of System Center Configuration Manager (Current Branch). You currently deploy all Windows updates by using Configuration Manager. You pilot the deployment of Click-to-Run for Office 365 and discover that clients are downloading updates for Office 365 from the Internet. You need to manage the updates for Click-to-Run for Office 365. What should you do?

- A. Create an automatic deployment rule (ADR) for software updates.
- B. From Default Client Settings, click Software Updates and set Enable installation of Express installation files on clients to Yes.
- C. Create a deployment package for software updates.
- D. From Default Client Settings, click Software Updates and set Enable management of the Office 365 Client Agent to Yes.

Answer: C

Explanation: References: <https://docs.microsoft.com/en-us/sccm/core/servers/deploy/configure/deploy-and-manage-content>

NEW QUESTION 74

After you answer a question in this section, you will NOT be able to return to it. As a result, these questions will not appear in the review screen. You plan to deploy System Center Configuration Manager (Current Branch) by using an initial pilot deployment. The pilot deployment will contain five computers that run Windows 10. You need to deploy the Configuration Manager client to the five computers only. Solution: From each client, you run ccmsetup.exe. Does this meet the goal?

- A. Yes
- B. No

Answer: A

NEW QUESTION 79

Note: This question is part of a series of questions that present the same scenario. Each question in the series contains a unique solution that might meet the stated goals. Some question sets might have more than one correct solution, while others might not have a correct solution. After you answer a question in this section, you will NOT be able to return to it. As a result, these questions will not appear in the review screen. You have a deployment of System Center Configuration Manager that collects the hardware inventory of Windows and Linux client computers. You need to capture additional information about the hardware on the Linux computers. Solution: You create a custom hardware inventory provider by using the OMI source. Does this meet the goal?

- A. Yes
- B. No

Answer: B

NEW QUESTION 82

You have a deployment of System Center Configuration Manager (Current Branch) that you use to manage devices on the corporate network. You need to ensure that you can deploy software to Configuration Manager clients on the Internet. What should you deploy?

- A. a cloud-based distribution point in Microsoft Azure and the Microsoft Operations Management Suite (OMS) connector
- B. a management point and a service connection point in a perimeter network.
- C. a cloud-based distribution point and a cloud management gateway in Microsoft Azure
- D. a cloud-based distribution point in Microsoft Azure and a Microsoft Intune subscription

Answer: C

Explanation: References: <https://docs.microsoft.com/en-us/sccm/core/clients/manage/cmgy/plan-cloud-management-gateway>

NEW QUESTION 83

You have a deployment of System Center Configuration Manager (Current Branch). Configuration Manager includes the collections shown in the following table.

Collection name	Members
Collection1	Computer1,Computer2,
Collection2	Computer2,Computer3
Collection3	Computer3

Configuration Manager has the following antimalware policies defined as shown in the following table.

Policy name	Priority	Deployed to	Scheduled scan time
Default Client Antimalware Policy	10,000	Not applicable	02:00
Settings1	2	Collection1	04:00
Settings2	3	Collection1	12:00
Settings3	1	Collection2	Not applicable
Settings4	4	Collection3	Not applicable

When are the scheduled scan times for Computer1, Computer2, and Computer3? To answer, select the appropriate options in the answer area.
NOTE: Each correct selection is worth one point.

Answer Area

Computer1:

▼

02.00

04.00

12.00

Never

Computer2:

▼

02.00

04.00

12.00

Never

Computer3:

▼

02.00

04.00

12.00

Never

Answer:

Explanation: References: <https://technet.microsoft.com/en-us/library/hh508785.aspx>

NEW QUESTION 87

You have offices in the United Kingdom and Sweden.
You have a deployment of System Center Configuration Manager that you use to manage the client computers in the offices.
All the managed computers run Windows 10. The computers in the United Kingdom office use the English (United Kingdom) en-GB language pack. The computers in the Sweden office use the Swedish (Sweden) sv-SE language pack.
You need to create a servicing plan for Windows 10 in Configuration Manager to update the computers to the latest version of Windows 10.
The solution must meet the following requirements:

Values

<10>

>=10

>10

en-GB AND sv-SE

en-GB OR sv-SE

"en-GB, sv-SE"

ten

Answer Area

Required:

Value

Title:

Value

Answer:

Explanation: References: <https://docs.microsoft.com/en-us/sccm/osd/deploy-use/manage-windows-as-a-service>

NEW QUESTION 88

You have a deployment of System Center Configuration Manager (Current Branch).

You need to back up the CD.Latest folder and the Configuration Manager database. The solution must meet the following requirements:

- ▶ Compress the backup of the Configuration Manager database.
- ▶ Ensure that the backups can be restored to a consistent state.

Which type of backups should you use? To answer, drag the appropriate options to the correct content types. Backup type may be used once, more than once, or not at all. You may need to drag the split bar between panes or scroll to view content.

NOTE: Each correct selection is worth one point.

Answer Area

Backup Types

A full database backup in Microsoft SQL Server

A maintenance task backup in Configuration Manager

A system state backup in Windows Server Backup

The CD.Latest folder:

Backup type

The Configuration Manager database:

Backup type

Answer:

Explanation: References: <https://docs.microsoft.com/en-us/sccm/protect/understand/backup-and-recovery>

NEW QUESTION 89

You have a deployment of System Center Configuration Manager (Current Branch).

You need to create a list of client computers that lack the system resources required to upgrade Microsoft Office.

Which two actions should you perform? Each correct answer presents part of the solution. NOTE: Each correct selection is worth one point.

- A. Enable Asset Intelligence hardware inventory reporting classes.
- B. Configure auditing for the resource attributes on files.
- C. Add an Asset Intelligence synchronization point.
- D. Add a service connection point.
- E. Enable Active Directory System Discovery.

Answer: AC

Explanation: References:

<https://docs.microsoft.com/en-us/sccm/core/clients/manage/asset-intelligence/introduction-to-asset-intelligence> <https://docs.microsoft.com/en-us/sccm/core/clients/manage/asset-intelligence/configuring-asset-intelligence>

NEW QUESTION 90

Note: This question is part of a series of questions that present the same scenario. Each question in the series contains a unique solution that might meet the stated goals. Some question sets might have more than one correct solution, while others might not have a correct solution.

After you answer a question in this section, you will NOT be able to return to it. As a result, these questions will not appear in the review screen.

You have a deployment of System Center Configuration Manager (Current Branch). You configure hybrid mobile device management (MDM).

You enroll several Apple iOS devices and deploy compliance policies. One of the devices is marked as noncompliant.

You need to retrieve the logs from the device.

Solution: You open the Company Portal app, shake the device, and then tap Send Diagnostic Report when the diagnostics alert appears.

Does this meet the goal?

- A. Yes
- B. No

Answer: B

NEW QUESTION 95

You have a deployment of System Center Configuration Manager (Current Branch). You have offices in Montreal and Seattle. You need to deploy software to the client computers in the Montreal office only. What should you do first?

- A. Create an Active Directory container.
- B. Create a user collection that contains the users in the Montreal office.
- C. Configure a boundary group for client assignment.
- D. Create a boundary for the Montreal office that uses IP subnets.

Answer: D

NEW QUESTION 100

Note: This question is part of a series of questions that present the same scenario. Each question in the series contains a unique solution that might meet the stated goals. Some question sets might have more than one correct solution, while others might not have a correct solution.

After you answer a question in this section, you will NOT be able to return to it. As a result, these questions will not appear in the review screen.

You have a deployment of System Center Configuration Manager (Current Branch). You configure hybrid mobile device management (MDM).

You have a support technician named User1. Your company purchases 300 Apple iPhones.

You need to ensure that User1 can enroll the iPhones.

Solution: From Default Client Settings, you set an enrollment profile. Does this meet the goal?

- A. Yes
- B. No

Answer: B

Explanation: References:

<https://docs.microsoft.com/en-us/sccm/mdm/deploy-use/enroll-devices-with-device-enrollment-manager>

NEW QUESTION 102

You have a collection of devices that run an application named SaleApp1.

Every week, the sales manager publishes an updated price list to a file share. To use the new price list, the list must be copied to the application folder on the devices.

You need to ensure that SalesApp1 receives a new price list weekly. What should you configure?

- A. a weekly maintenance window for the target collection
- B. a weekly schedule for the Update Application Available Targeting maintenance task
- C. a weekly content validation schedule on the distribution point
- D. a package that has a weekly recurrence schedule

Answer: D

NEW QUESTION 107

Note: This question is part of a series of questions that present the same scenario. Each question in the series contains a unique solution that might meet the stated goals. Some question sets might have more than one correct solution, while others might not have a correct solution.

After you answer a question in this section, you will NOT be able to return to it. As a result, these questions will not appear in the review screen.

You deploy the first primary site server to your organization. Discovery is not configured. You need to deploy the Configuration Manager client to five client computers in a workgroup. Solution: You configure client push installations.

Does this meet the goal?

- A. Yes
- B. No

Answer: B

Explanation: References: <https://docs.microsoft.com/en-us/sccm/core/clients/deploy/deploy-clients-to-windows-computers>

NEW QUESTION 108

Note: This question is part of a series of questions that present the same scenario. Each question in the series contains a unique solution that might meet the stated goals. Some question sets might have more than one correct solution, while others might not have a correct solution.

After you answer a question in this section, you will NOT be able to return to it. As a result, these questions will not appear in the review screen.

You deploy the first primary site server to your organization. Discovery is not configured. You need to deploy the Configuration Manager client to five client computers in a workgroup. Solution: You manually install the client on the computers.

Does this meet the goal?

- A. Yes
- B. No

Answer: A

Explanation: References: <https://docs.microsoft.com/en-us/sccm/core/clients/deploy/deploy-clients-to-windows-computers>

NEW QUESTION 109

Your company has a main office and a branch office.

You have a deployment of System Center Configuration Manager (Current Branch).

The main office has a software update point. Currently, all client computers receive Microsoft updates from the main office.

You need to ensure that the computers in the branch office receive updates from a local server. The solution must meet the following requirements:

- ☒ Ensure that the updates are managed by using Configuration Manager.
- ☒ Ensure that the computers in the branch office scan for updates against a local catalog. What should you deploy to the branch office?

- A. a software update point, a service connection point, and an Application Catalog website point
- B. a software update point, a distribution point, and a reporting services point
- C. Windows Server Update Services (WSUS), a service connection point, and a management point
- D. Windows Server Update Services (WSUS), a software update point, and a distribution point

Answer: D

NEW QUESTION 113

You have a deployment of System Center Configuration Manager (Current Branch). You configure discovery.

You have a query that returns all devices without the Configuration Manager client installed. You create a collection that uses the query.

You need to deploy the Configuration Manager client to the members of the collection only. Which deployment method should you use?

- A. a package deployment
- B. a software update point-based installation
- C. a manual client push installation
- D. a Group Policy installation

Answer: C

NEW QUESTION 117

You have a deployment of System Center Configuration Manager (Current Branch). You add the cloud management gateway connector point to the deployment

Which site system role can be configured to receive the traffic from the cloud management gateway?

- A. Software update point
- B. Asset Intelligence synchronization point
- C. Service connection point
- D. Distribution point

Answer: A

Explanation: <https://www.systemcenterdudes.com/how-to-setup-an-sccm-cloud-management-gateway/>

NEW QUESTION 122

You have a deployment of System Center Configuration Manager (Current Branch).

You deploy several Microsoft Store for Business apps to client computers by using Configuration Manager. You purchase a new Microsoft Store for Business app named App1. App1 is licensed for offline use.

You need to ensure that you can deploy App1 immediately by using Configuration Manager. What should you do?

- A. From the Configuration Manager console, synchronize the Windows Store for Business.
- B. From the Microsoft Azure portal, add App1 to Azure Active Directory.
- C. From the Configuration Manager console, run the Azure Services Wizard.
- D. From Microsoft Intune in the Microsoft Azure portal, add App1 to Intune.

Answer: A

Explanation: References: <https://www.petervanderwoude.nl/post/windows-store-for-business-synchronized-with-configmgr/>

NEW QUESTION 127

Note: This question is part of a series of questions that present the same scenario. Each question in the series contains a unique solution that might meet the stated goals. Some question sets might have more than one correct solution, while others might not have a correct solution.

After you answer a question in this section, you will NOT be able to return to it. As a result, these questions will not appear in the review screen.

Your company uses a network ID of 10.0.0.0/8.

The company opens a new office that uses a network ID of 10.5.0.0/16. The office has three floors. Each floor has a VLAN. The network ID of each VLAN is 10.5.10.0/24, 10.5.20.0/24, and 10.5.30.0/24.

You create a distribution point for the new office.

You need to ensure that the clients in the new office obtain content from the new distribution point. Solution: Create an IP address range boundary from 10.5.0.0/16.

Does this meet the goal?

- A. Yes
- B. No

Answer: B

NEW QUESTION 129

You have a deployment of System Center Configuration Manager (Current Branch). The domain contains the users shown in the following table.

User name	Members of
Account1	Domain Users
Account2	Help Desk Users
Account3	Enterprise Admins
Account4	Support Techs

Support Techs is a member of the Administrators group on each client computer. Help Desk Users is a member of the Power Users group on each client computer.

You need to deploy Configuration Manager agents by using a client push installation. The solution must use the principle of least privilege.

Which account should you configure as the client push installation account?

- A. Account1
- B. Account2
- C. Account3
- D. Account4

Answer: B

NEW QUESTION 132

Note: This question is part of a series of questions that use the same scenario. For your convenience, the scenario is repeated in each question. Each question presents a different goal and answer choices, but the text of the scenario is exactly the same in each question in this series.

Start of repeated scenario.

You work for a company named ADatum Corporation.

The ADatum network contains an Active Directory domain named adatum.com.

You have a partner company named Contoso, Ltd. The Contoso network contains an Active Directory domain named contoso.com.

All the client computers at both companies run Windows 10.

Each company has a deployment of System Center Configuration Manager (Current Branch). ADatum has sales and IT departments. ADatum has a collection for each department.

Contoso has research, marketing, and human resources (HR) departments. Contoso has a collection for each department.

ADatum purchases Contoso.

You configure on-premises mobile device management (MDM) in adatum.com. You enroll the client computers in the IT department into on-premises MDM.

You configure hybrid MDM in contoso.com. End of repeated scenario.

You need to ensure that when managers join Microsoft Azure Active Directory, their computers are enrolled automatically into MDM.

What should you do? To answer, select the appropriate options in the answer area. NOTE: Each correct selection is worth one point.

Tool to use:

the Active Directory Sites and Services console

the Configuration Manager console

the Group Policy Management Editor

the Microsoft Azure portal

the Microsoft Intune portal

Setting to configure:

Add workstations to domain

Device configuration

Device enrollment

Mobility (MDM and MAM)

Answer:

Explanation: <https://docs.microsoft.com/en-us/sccm/mdm/deploy-use/enroll-hybrid-windows>

NEW QUESTION 135

You have a deployment of System Center Configuration Manager (Current Branch) that was implemented by a user named Admin1.

Configuration Manager includes the administrative users shown in the following table:

User name	Security role	Security scope
User1	Infrastructure Administrator	Default, Scope1
User2	Asset Manager	Scope1
User3	Full Administrator	Default
User4	Operating System Deployment Manager	Scope1
User5	Operating System Deployment Manager	Default
User6	Operations Administrator	Scope1
User7	Operations Administrator	Default
User8	Company Resource Access Manager	Default, Scope1

You add a boot image named Boot1 to Configuration Manager. You set the security scope of Boot1 to Scope1. Which user can create a task sequence that uses Boot1?

- A. User4
- B. User5
- C. User7
- D. User1

Answer: A

Explanation: References: <https://technet.microsoft.com/en-us/library/gg682108.aspx>

NEW QUESTION 139

Note: This question is part of a series of questions that present the same scenario. Each question in the series contains a unique solution that might meet the stated goals. Some question sets might have more than one correct solution, while others might not have a correct solution.

After you answer a question in this section, you will NOT be able to return to it. As a result, these questions will not appear in the review screen.

Your company has client computers that run either the 32-bit version of Windows 8 or the 64-bit version of Windows 10.

You need to install a line-of-business application to the computers. The 64-bit version of the application must be installed on the Windows 10 computers.

Solution: Create one application that has two deployment types. Configure a requirement for each deployment type.

Does this meet the goal?

- A. Yes
- B. No

Answer: A

Explanation: References:

<https://blogs.technet.microsoft.com/canitpro/2013/06/02/step-by-step-managing-multiple-versions-of-the-same-a>

NEW QUESTION 142

Note: This question is part of a series of questions that use the same scenario. For your convenience, the scenario is repeated in each question. Each question presents a different goal and answer choices, but the text of the scenario is exactly the same in each question in this series.

Start of repeated scenario.

Your network contains an Active directory forest named adatum.com.

All client computers run Windows 10 Enterprise. All the computers are named by using the name of their respective department and an incremental three-digit number. For example, the first computer in the sales department is named Sales001.

Several managers use tablets that run Windows 10 and have 3 GB of RAM. All other client computers have at least 8 GB RAM.

Adatum.com is synchronized to Microsoft Azure Active Directory. Your company implements the Microsoft Store for Business.

You have a deployment of System Center Configuration Manager (Current Branch) that has discovery configured. All the client computers have the Configuration Manager client installed.

The company uses the applications shown in the following table.

Application Name	Description
App1	A Microsoft Application Virtualization (APP-V) virtual application
App2	An app that the company purchased from the Microsoft Store for Business and is licensed for offline use
App3	A 64-bit application that is deployed to all the client computers
SalesAppLite	An application used by users in the sale department on computers that have 3 GB of Ram or less
SalesAppFull	An application used by users in the sale department on computers that have more than 3 GB of Ram.

The company identifies the following requirements for software deployments:

- ▶ View the Upgrade Readiness data of all the client computers.
- ▶ Deploy App1 to the client computers in the marketing department.
- ▶ Deploy App2 to the client computers in the human resources (HR) department.
- ▶ Monitor the usage of App3.
- ▶ Deploy SalesAppLite to sales department computers that have 3 GB of RAM or less.
- ▶ Deploy SalesAppFull to sales department computers that have more than 3 GB of RAM.

You create a cloud-based distribution point that has a public name of d1594d4527614a09b934d470. End of repeated scenario.

You need to create the DNS record in adatum.com for the cloud-based distribution point. What should you configure? To answer, select the appropriate options in the answer area. NOTE: Each correct selection is worth one point.

Answer Area

Record type:

Alias(CNAME)
Host (A or AAAA)
Host information (HINFO)
Service location (SRV)
Well known services (WKS)

▼

Name to reference:

d1594d4527614a09b934d470.azure.com
d1594d4527614a09b934d470.cloudapp.net
d1594d4527614a09b934d470.core.windows.net
d1594d4527614a09b934d470.manage.microsoft.com
d1594d4527614a09b934d470.onmicrosoft.com

▼

Answer:

Explanation: References:

<https://docs.microsoft.com/en-us/sccm/core/servers/deploy/configure/install-cloud-based-distribution-points-in->

NEW QUESTION 146

You have a deployment of System Center Configuration Manager (Current Branch). Hardware inventory is enabled for all Configuration Manager clients.

You create a device collection named Collection1..

You need to include Trusted Platform Module (TPM) information in the hardware inventory of the devices in Collection1.

What should you configure in Configuration Manager?

- A. a configuration baseline
- B. the Client Device Settings
- C. hardware requirements
- D. a compliance policy

Answer: C

NEW QUESTION 148

You have a deployment of System Center Configuration Manager (Current Branch). You manage 100 client computers that run Windows 10. You purchase new computers that will replace the existing computers. You need to perform a side-by-side migration of the computers. Which four actions should you perform in sequence? To answer, move the appropriate actions from the list of actions to the answer area and arrange them in the correct order.

NOTE: More than one order of answer choices is correct. You will receive credit for any of the correct orders you select.

Actions

Create computer associations

Capture the user data

Deploy the task sequence and re-store the user data

Create an in-place upgrade task sequence

Create an existing image package task sequence

Update the boot image

Answer Area

Answer:

Explanation: References:
<https://docs.microsoft.com/en-us/sccm/osd/get-started/manage-boot-images>
<https://docs.microsoft.com/en-us/sccm/osd/deploy-use/create-a-task-sequence-to-install-an-operating-system>

NEW QUESTION 151

Your company has offices in New York and London. All client computers run Windows 10. You have a deployment of System Center Configuration Manager (Current Branch) that you use to manage the computers. The company has the applications shown in the following table.

Application Name	Description
App1	Installed by using an Windows Installer (MSI) package
App2	Installed by using an Windows Installer (MSI) package and dependent on App1
App3	Installed by using an executable file named Setup.exe

You need to deploy the applications to meet the following requirements:

- ▶ Deploy App2 to all the computers in the New York office.
- ▶ Deploy App3 to all the computers in the London office.
- ▶ Minimize administrative effort.

What should you create in Configuration Manager for each deployment? To answer, drag the appropriate options to the correct applications. Each option may be used once, more than once, or not at all. You may need to drag the split bar between panes or scroll to view content.

NOTE: Each correct selection is worth one point.

Options

an application

a deployment package

a package

a software update group

Answer Area

App2:

Option

App3:

Option

Answer:

Explanation: References: <https://docs.microsoft.com/en-us/sccm/apps/deploy-use/create-applications> <https://docs.microsoft.com/en-us/sccm/apps/deploy-use/packages-and-programs>

NEW QUESTION 153

You have a deployment of System Center Configuration Manager (Current Branch). You have the servers shown in the following table.

Server name	Site system role	
CM01	Primary Site Server Management Point	Windows Server 2012 R2
CM02	Distributuion point	Windows Server 2012 R2

You have one subnet that contains all the servers and several subnets that contain client computers. A firewall restricts network traffic to the server subnet. You install a new server named CM03 that runs Windows Server 2016. You install Windows Server Update Services (WSUS) on CM03 by using the default options. You configure CM03 as the software update point. You need to ensure that the client computers can access the software update point. Which port should you open on the firewall?

- A. 80
- B. 443
- C. 8080
- D. 8530

Answer: A

Explanation: References: https://technet.microsoft.com/en-us/library/hh427328.aspx#BKMK_PortsSUP-WSUS

NEW QUESTION 156

You have a deployment of System Center Configuration Manager (Current Branch). You plan to configure content management by creating distribution points and distribution point groups. Which type of object can you associate to the distribution points and the distribution point groups? To answer, select the appropriate options in the answer area. NOTE: Each correct selection is worth one point.

Distribution Points:

An Active Directory site

A boundary group

A collection

A subnet

Distribution point groups:

An Active Directory site

A boundary group

A collection

A subnet

Answer:

Explanation: References: <https://docs.microsoft.com/en-us/sccm/core/servers/deploy/configure/install-and-configure-distribution-points>

NEW QUESTION 157

You have a deployment of System Center Configuration Manager (Current Branch). You use Configuration Manager to deploy Windows 10. You discover that newly deployed images of Windows 10 are missing several Windows 10 updates. When you attempt to deploy the updates by using the Schedule Updates Wizard, the process fails, and you receive the following error message: “Failed to apply one or more updates.” Which log file should you view to get additional information about the failure?

- A. ScanAgent.log
- B. UpdatesHandler.log
- C. OfflineServicingMgr.log
- D. UpdatesDeployment.log
- E. WUAHandler.log

Answer: C

Explanation: References: <https://technet.microsoft.com/en-us/library/hh427342.aspx>

NEW QUESTION 162

Note: This question is part of a series of questions that use the same scenario. For your convenience, the scenario is repeated in each question. Each question presents a different goal and answer choices, but the text of the scenario is exactly the same in each question in this series.

Start of repeated scenario.

Your network contains an Active directory forest named adatum.com.

All client computers run Windows 10 Enterprise. All the computers are named by using the name of their respective department and an incremental three-digit number. For example, the first computer in the sales department is named Sales001.

Several managers use tablets that run Windows 10 and have 3 GB of RAM. All other client computers have at least 8 GB RAM.

Adatum.com is synchronized to Microsoft Azure Active Directory. Your company implements the Microsoft Store for Business.

You have a deployment of System Center Configuration Manager (Current Branch) that has discovery configured. All the client computers have the Configuration Manager client installed.

The company uses the applications shown in the following table.

Application Name	Description
App1	A Microsoft Application Virtualization (APP-V) virtual application
App2	An app that the company purchased from the Microsoft Store for Business and is licensed for offline use
App3	A 64-bit application that is deployed to all the client computers
SalesAppLite	An application used by users in the sale department on computers that have 3 GB of Ram or less
SalesAppFull	An application used by users in the sale department on computers that have more than 3 GB of Ram.

- The company identifies the following requirements for software deployments:
- ▶ View the Upgrade Readiness data of all the client computers.
 - ▶ Deploy App1 to the client computers in the marketing department.
 - ▶ Deploy App2 to the client computers in the human resources (HR) department.
 - ▶ Monitor the usage of App3.
 - ▶ Deploy SalesAppLite to sales department computers that have 3 GB of RAM or less.
 - ▶ Deploy SalesAppFull to sales department computers that have more than 3 GB of RAM.

You create a cloud-based distribution point that has a public name of d1594d4527614a09b934d470. End of repeated scenario.

The company creates a new department named research.

You need to deploy App2 and App3 to the client computers in the research department.

How should you configure the membership rule for the Research collection? To answer, select the appropriate options in the answer area.

NOTE: Each correct selection is worth one point.

Answer Area

System Resource.Name

is euqal to

is greater than

is greater than or equal to

is less than

is less then or euqal to

is like

is not equal to

is not like

Research%

Research*

Research???

Research_

Answer:

Explanation: References: <https://technet.microsoft.com/en-us/library/hh967533.aspx> <https://technet.microsoft.com/en-us/library/gg712323.aspx>

NEW QUESTION 164

Your network contains an Active Directory forest named adatum.com that has an enterprise certification authority (CA) named CA1. The certificate revocation list (CRL) is published to Active Directory and to a website.

You deploy on-premises mobile device management (MDM) by using System Center Configuration Manager (Current Branch). The Configuration Manager site systems use certificates issued by CA1. You have the devices shown in the following table.

Device name	Operating system	Member of
Device1	Windows 8.1 Enterprise	Adatum.com
Device2	Windows 10 Pro	A workgroup

You need to enroll Device1 and Device2 to the on-premises MDM.

What should you do before you can enroll each device? To answer, select the appropriate options in the answer area.

NOTE: Each correct selection is worth one point.

Device1:

<input type="checkbox"/> Add CA1 as a trusted root CA <input type="checkbox"/> Request a certificate from CA1 <input type="checkbox"/> Upgrade the operating system <input type="checkbox"/> Install a Configuration Manager agent

Device2:

<input type="checkbox"/> Add CA1 as a trusted root CA <input type="checkbox"/> Request a certificate from CA1 <input type="checkbox"/> Upgrade the operating system <input type="checkbox"/> Install a Configuration Manager agent

Answer:

Explanation: https://docs.microsoft.com/en-us/sccm/mdm/deploy-use/user-enroll-devices-on-premises-mdm#bkmk_enrollDes <https://docs.microsoft.com/en-us/sccm/mdm/get-started/set-up-device-enrollment-on-premises-mdm>

NEW QUESTION 165

Note: This question is part of a series of questions that present the same scenario. Each question in the series contains a unique solution that might meet the stated goals. Some question sets might have more than one correct solution, while others might not have a correct solution.

After you answer a question in this section, you will NOT be able to return to it. As a result, these questions will not appear in the review screen.

You have a deployment of System Center Configuration Manager that collects the hardware inventory of Windows and Linux client computers.

You need to capture additional information about the hardware on the Linux computers. Solution: You extend the inventory by adding a new inventory class.

Does this meet the goal?

- A. Yes
- B. No

Answer: A

Explanation: References: <https://docs.microsoft.com/en-us/sccm/core/clients/manage/inventory/extend-hardware-inventory>

NEW QUESTION 167

You deploy the System Center Configuration Manager client to all domain-joined computers that run Windows.

From Resource Explorer, you view the hardware and software inventory information of the computers. When you run the Hardware 07A – USB Devices by Manufacturer report, the report does not produce any results.

What should you do to ensure that the report contains results?

- A. Enable Asset Intelligence hardware inventory reporting classes.
- B. Enable software metering on the clients.
- C. Configure the Summarize Installed Software Data maintenance task.
- D. Configure an Asset Intelligence synchronization point.

Answer: A

Explanation: References:

<https://docs.microsoft.com/en-us/sccm/core/clients/manage/asset-intelligence/introduction-to-asset-intelligence> <https://docs.microsoft.com/en-us/sccm/core/clients/manage/asset-intelligence/configuring-asset-intelligence>

NEW QUESTION 171

Note: This question is part of a series of questions that present the same scenario. Each question in the series contains a unique solution that might meet the

stated goals. Some question sets might have more than one correct solution, while others might not have a correct solution. After you answer a question in this section, you will NOT be able to return to it. As a result, these questions will not appear in the review screen. You have a deployment of System Center Configuration Manager (Current Branch). You configure a cloud management gateway for Configuration Manager. You have a client computer that is currently on the corporate network. You need to force the computer to get the location of the cloud management gateway immediately. Solution: You run the Get-cloudDistributionPoint cmdlet. Does this meet the goal?

- A. Yes
- B. No

Answer: B

NEW QUESTION 174

You have a deployment of System Center Configuration Manager (Current Branch). You need to ensure that help desk users can use the Configuration Manager console to remotely control Configuration Manager clients. Which two actions should you perform? Each correct answer presents part of the solution. NOTE: Each correct selection is worth one point.

- A. Add the help desk users to the local Administrators group on each client computer.
- B. Enable Remote Desktop on the client computers.
- C. Configure a client settings policy.
- D. Allow connections to TCP port 2701 on the client computers.
- E. Allow connections to TCP port 3389 on the client computers.

Answer: CE

Explanation: References:

<https://docs.microsoft.com/en-us/sccm/core/clients/manage/remote-control/configuring-remote-control> <https://technet.microsoft.com/en-us/library/bb632618.aspx>

NEW QUESTION 176

You have a deployment of System Center Configuration Manager (Current Branch). Your company has a main office and a branch office. The branch office has five users. Some users use laptops and some users use desktop computers. All the servers for the company are located in the main office. The branch office connects to the main office by using a VPN over a DSL connection to the main office. You need to minimize the bandwidth used to deploy updates to branch office clients over the VPN connection. The solution must minimize costs. What should you configure in the branch office?

- A. a distribution point
- B. a software update point
- C. a secondary site server
- D. a cloud-based distribution point

Answer: C

Explanation: References: <https://docs.microsoft.com/en-us/sccm/core/plan-design/hierarchy/design-a-hierarchy-of-sites>

NEW QUESTION 177

You deploy System Center Configuration Manager (Current Branch). You need to implement the co-management of Windows 10 devices. Which two components should you deploy before you can configure co-management? Each correct answer presents part of the solution. NOTE: Each correct selection is worth one point.

- A. a cloud management gateway
- B. the Microsoft Operations Management Suite (OMS) connector
- C. a Microsoft Intune subscription
- D. the Microsoft Store for Business
- E. a Microsoft Office 365 subscription

Answer: AC

Explanation: References: <https://docs.microsoft.com/en-us/sccm/core/clients/manage/co-management-prepare>

NEW QUESTION 179

You have a deployment of System Center Configuration Manager (Current Branch). You plan to implement hybrid mobile device management (MDM). Which cloud service should you provision?

- A. Microsoft Operations Manager Suite (OMS)
- B. Microsoft Store for Business
- C. Microsoft Intune
- D. Microsoft Azure

Answer: C

NEW QUESTION 183

.....

Thank You for Trying Our Product

We offer two products:

1st - We have Practice Tests Software with Actual Exam Questions

2nd - Questions and Answers in PDF Format

70-703 Practice Exam Features:

- * 70-703 Questions and Answers Updated Frequently
- * 70-703 Practice Questions Verified by Expert Senior Certified Staff
- * 70-703 Most Realistic Questions that Guarantee you a Pass on Your First Try
- * 70-703 Practice Test Questions in Multiple Choice Formats and Updates for 1 Year

100% Actual & Verified — Instant Download, Please Click
[Order The 70-703 Practice Test Here](#)