

Juniper

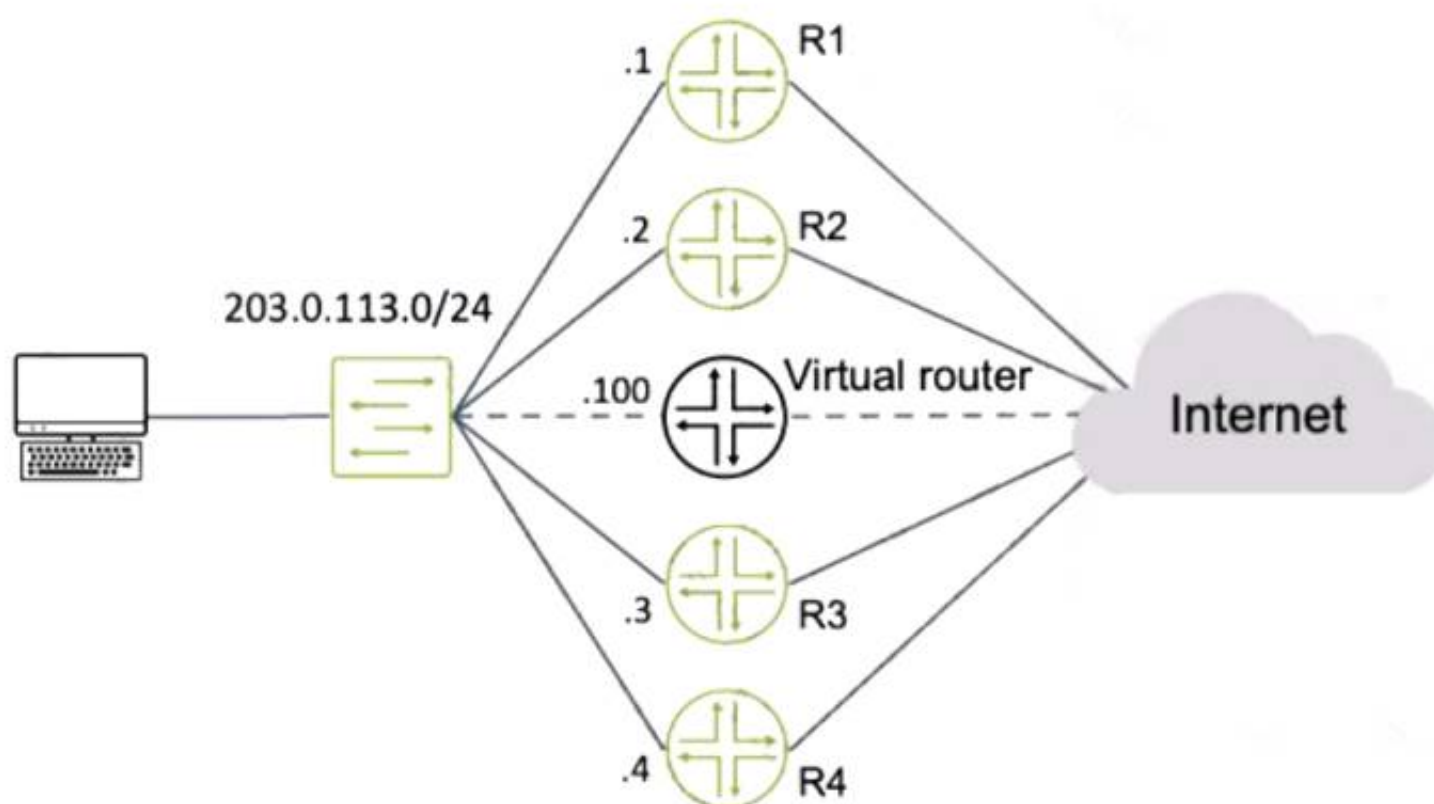
Exam Questions JN0-363

Service Provider Routing and Switching Specialist (JNCIS-SP)



NEW QUESTION 1

Exhibit



Routers R1 and R4 have a VRRP priority of 90, while R2 and R3 have default VRRP priorities. Referring to the exhibit, which router will be elected as the primary VRRP router?

- A. R3
- B. R4
- C. R2
- D. R1

Answer: D

NEW QUESTION 2

What are three well-known mandatory BGP attributes? (Choose three.)

- A. next hop
- B. origin
- C. community
- D. MED
- E. AS path

Answer: ABE

NEW QUESTION 3

Which statement is correct about the FE80::/10 prefix?

- A. This prefix range is used for the link local address.
- B. This prefix range is used on the loopback interface.
- C. This prefix range is reserved for multicast applications.
- D. This prefix range is not reserved.

Answer: A

NEW QUESTION 4

You have created a routing instance named vr3 that will provide access to Server 2 (10.0.0.2) (or the hosts on the 10.10.10.0/24 network). Which command would you use to test connectivity between vr3 and Server 2?

- A. user@vr3> ping 10.0.0.2 count 5
- B. user@vr3> ping 10.0.0.2 count 5 source 10.10.10.1
- C. user@router1> ping 10.0.0.2 count 5
- D. user@router1> ping 10.0.0.2 routing-instance vr3 count 5

Answer: C

NEW QUESTION 5

How does a Junos device learn about MAC addresses when it is first connected to an Ethernet LAN?

- A. The device sends out a network broadcast message asking for all devices and MAC addresses on the network and stores this information. In addition to the interface from which the response was received.
- B. The device learns the destination MAC addresses from traffic in the network and stores this MAC address in addition to the interface from which the traffic was received.

- C. The device learns the source MAC addresses from traffic in the network and stores this MAC address in addition to the interface from which the traffic was received.
- D. The device sends out a network multicast message asking for all devices and MAC addresses on the network and stores this Information in addition to the interface from which the response was received.

Answer: D

NEW QUESTION 6

Exhibit

```
user@R2> show ospf interface extensive
Interface State Area DR ID BDR ID Nbrs
ge-0/0/3.0 DR 0.0.0.1 192.168.1.2 192.168.1.1 1 Type: LAN, Address: 172.26.1.2, Mask:
255.255.255.252, MTU: 1500, Cost: 1
  DR addr: 172.26.1.2, BDR addr: 172.26.1.1, Priority: 128, Adj count: 1
  Hello: 10, Dead: 40, ReXmit: 5, Not Stub
  Auth type: None Topology default (ID 0) -> Cost: 0
ge-0/0/1.0 BDR 0.0.0.0 192.168.1.3 192.168.1.2 1
  Type: LAN, Address: 172.26.2.1, Mask: 255.255.255.252, MTU: 1500, Cost: 1
  DR addr: 172.26.2.2, BDR addr: 172.26.2.1, Priority: 128, Adj count: 1 Hello: 10,
Dead: 40, ReXmit: 5, Not Stub
  Auth type: None
  Topology default (ID 0) -> Cost: 0
```

Referring to the exhibit, which two statements are correct? (Choose two.)

- A. The OSPF Interfaces are configured as point-to-point.
- B. The ge-0/0'1.0 Interface is configured as passive.
- C. The R2 device is an ABR.
- D. Junos OS default OSPF hello timers and dead intervals are used on all interfaces.

Answer: BD

NEW QUESTION 7

Which two statements are correct about the way that BGP propagates routes by default? (Choose two.)

- A. A route learned by EBGp will be re-advertised to IBGP peers.
- B. A route learned by IBGP will not be re-advertised lo IBGP peers.
- C. A route learned by EBGp will not be re-advertised to IBGP peers.
- D. A route learned by IBGP will be re-advertised to IBGP peers.

Answer: CD

NEW QUESTION 8

Which LSA type does an OSPF ABR use to advertise external routes generated by an NSSAASBR into the backbone?

- A. Type 5
- B. Type 7
- C. Type 3
- D. Type 1

Answer: C

NEW QUESTION 9

The segment touting SRGB start label Is 10,000 and the SRGB index range is 500.

In this scenario, which two statements are correct? (Choose two.)

- A. The first usable label is 10,001.
- B. The last usable label is 10.501.
- C. The last usable label is 10,499.
- D. The first usable label Is 10,000.

Answer: CD

NEW QUESTION 10

Exhibit

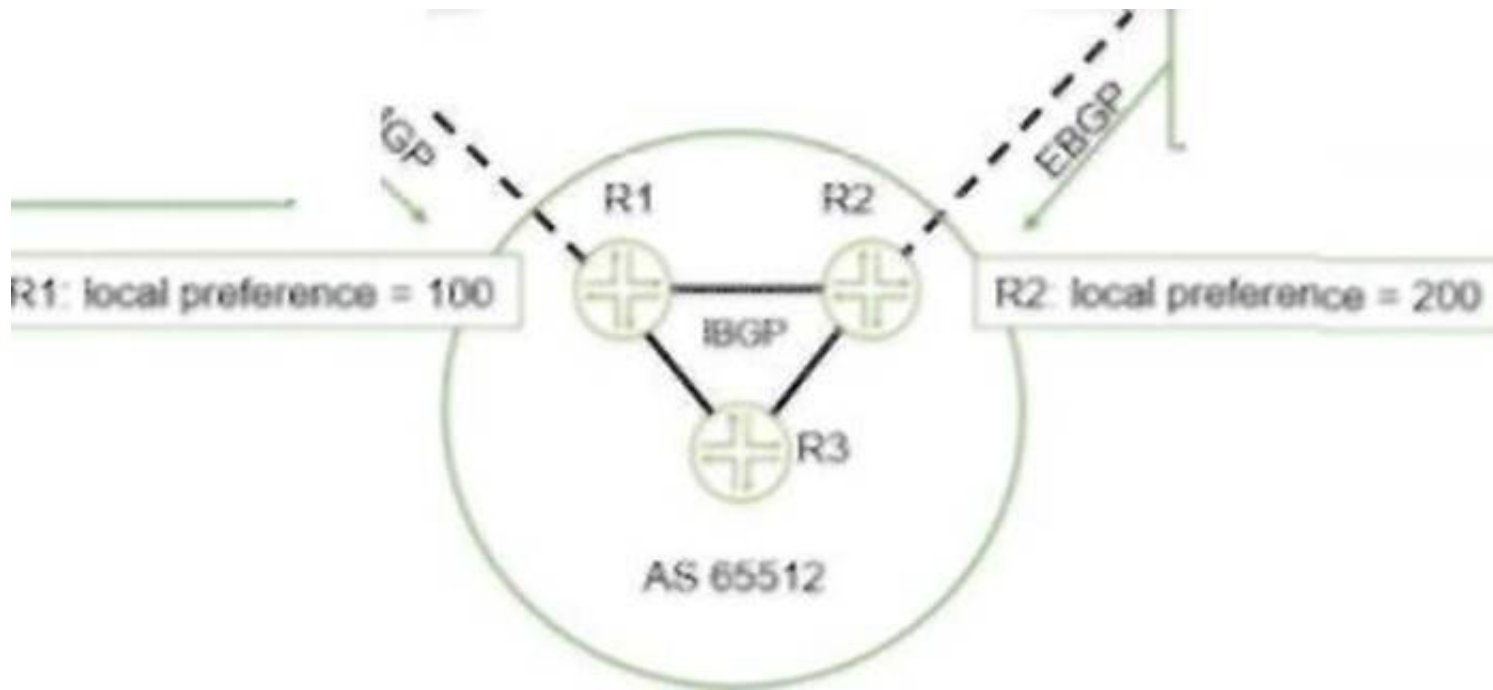
S Exhibit

LSI1 A AS 65501 ISPB AS 65502

Advertised Prefixes: 172.20.0.0/24 172.20.20.0/24 172.20.21.0/24

\ N

Advertised Prefixes: 172.20.0.0/24 172.20.1.0/24



Referring to the exhibit, which two statements are correct? (Choose two.)

- A. Devices in AS 65512 will prefer ISP A for traffic destined to the 172.20.21.0/24 network.
- B. Devices In AS 65512 will prefer ISP A for traffic destined to the 172.20.0.0/24 network.
- C. Devices in AS 65512 will prefer ISP B for traffic destined to the 172.20.21.0/24 network.
- D. Devices In AS 65512 will prefer ISP B for traffic destined to the 172.20.0.0/24 network.

Answer: C

NEW QUESTION 10

An OSPF router does not have a router ID configured.

In this scenario, which statement is correct about the router ID?

- A. The Junos OS will use the IP address assigned to the interface with the lowest MAC address.
- B. A router ID will not be assigned until it is manually configured.
- C. The Junos OS will use the IP address assigned to the loopback interface for the router ID.
- D. The Junos OS will use the IP address assigned to the Interface with the highest priority.

Answer: B

NEW QUESTION 11

You are bringing a new network online with three MX Series devices enabled for STP. No root bridge priority has been configured. Which statement is true in this scenario?

- A. The device with the lowest MAC address will be elected as the root bridge.
- B. The device with the highest MAC address will be elected as the root bridge.
- C. The device with the lowest numerical lo0 IP address will be elected as the root bridge.
- D. The device with the highest numerical lo0 IP address will be elected as The bridge.

Answer: A

NEW QUESTION 13

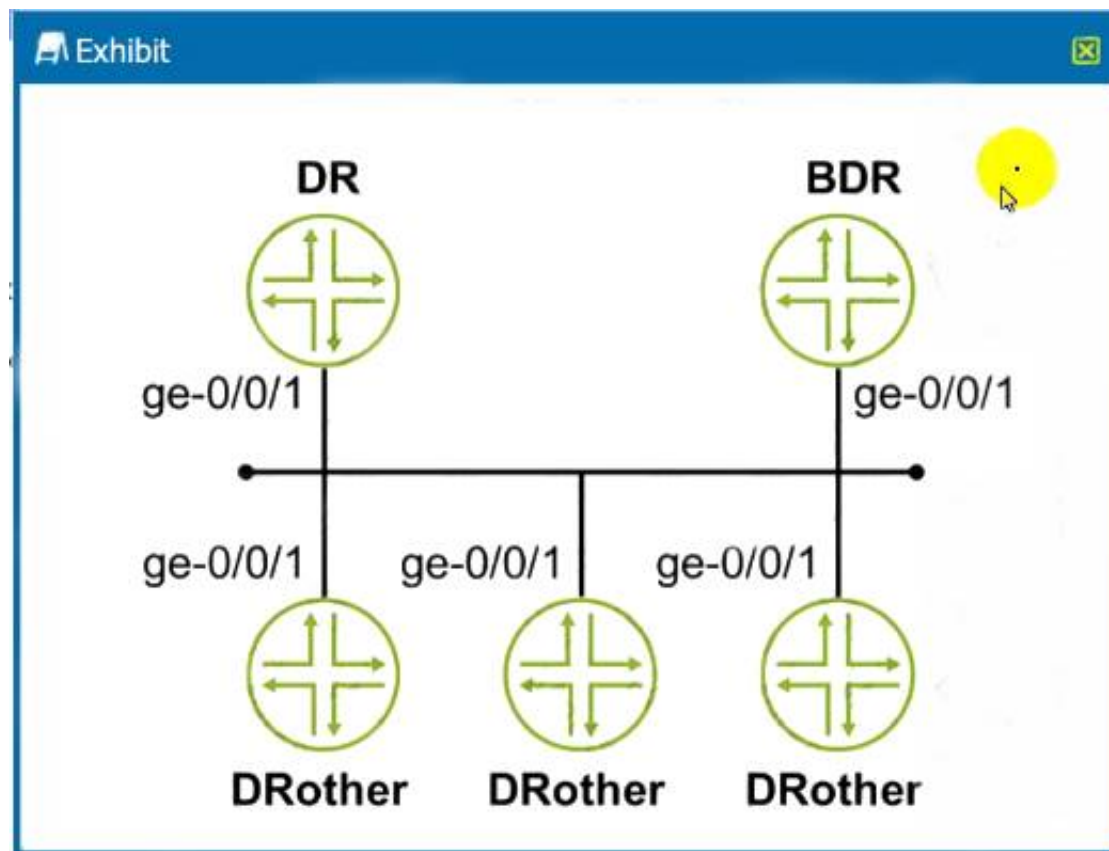
Which BGP attribute Is used to detect touting loops?

- A. AS path
- B. MED
- C. local preference
- D. next hop

Answer: A

NEW QUESTION 15

Exhibit



You are asked to configure the OSPF environment to prevent the DRoother routers from participating in DR/BDR election. Referring to the exhibit, which command will accomplish this task?

- A. set protocols ospf area 0.0.0.0 interface ge-0/0/1 priority 255
- B. set protocols ospf area 0.0.0.0 interface ge-0/0/1 priority 0
- C. set protocols ospf area 0.0.0.0 interface ge-0/0/1 interface-type nbma
- D. set protocols ospf area 0.0.0.0 interface ge-0/0/1 interface-type p2p

Answer: A

NEW QUESTION 20

Exhibit

```
user@router-re0> show system s?
```

Possible completions:

services	Show service applications information
snapshot	Show snapshot information
software	Show loaded JUNOS extensions
statistics	Show statistics for protocol
storage	Show local storage data

You have configured graceful RE switchover (GRES), however you cannot complete the show system switchover command. Referring to the exhibit, what is the problem?

- A. The command is only available if non-stop routing is enabled.
- B. The command is only available on the backup Routing Engine.
- C. The command is only available if a backup router is configured.
- D. The command is only available if graceful restart is enabled.

Answer: B

NEW QUESTION 23

Which statement describes integrated routing and bridging (IRB) interfaces?

- A. An IRB interface is an IP gateway for hosts of a bridge domain.
- B. An IRB interface assigns interfaces to VLANs.
- C. An IRB interface enables Layer 2 switching on the router.
- D. An IRB interface defines a bridge domain.

Answer: C

NEW QUESTION 24

Which two interface types are used as tunnel endpoints? (Choose two.)

- A. ae
- B. ip
- C. ge
- D. gr

Answer: BC

NEW QUESTION 26

Exhibit

Exhibit
✕

```
[edit]
user@switch# show routing-instances
sw-1 {
    instance-type virtual-switch;
    bridge-domains {
        vlan_1 {
            vlan-id 1;
        }
        vlan_2 {
            vlan-id 2;
        }
    }
}
[edit]
user@switch# show interfaces xe-1/0/5
unit 0 {
    family bridge {
        interface-mode access;
        vlan-id 2;
    }
}
```

You are asked to assign interface xe-1/0/5 to a virtual switch. What must be accomplished to complete the configuration?

- A. Interface xe-1/0/5 must be added to routing-instance sw-1 vlan_2.
- B. Interface xe-1/0/5 must be a trunk port.
- C. Interface xe-1/0/5 must be added to routing-instance sw-1.
- D. An IRB interface must be configured to routing-instance sw-1 vlan_2.

Answer: C

NEW QUESTION 27

You are bringing a new network online with three IS-IS routers using default Junos election priorities. The routers are configured as Level 2 only IS-IS routers. Which statement is true about the DIS election in this scenario?

- A. The router with the highest MAC address will be elected as the DIS.
- B. The router with the highest numerical lo0 IP address will be elected as the DIS.
- C. The router with the lowest numerical lo0 IP address will be elected as the DIS.
- D. The router with the lowest MAC address will be elected as the DIS.

Answer: B

NEW QUESTION 28

.....

Thank You for Trying Our Product

We offer two products:

1st - We have Practice Tests Software with Actual Exam Questions

2nd - Questions and Answers in PDF Format

JN0-363 Practice Exam Features:

- * JN0-363 Questions and Answers Updated Frequently
- * JN0-363 Practice Questions Verified by Expert Senior Certified Staff
- * JN0-363 Most Realistic Questions that Guarantee you a Pass on Your First Try
- * JN0-363 Practice Test Questions in Multiple Choice Formats and Updates for 1 Year

100% Actual & Verified — Instant Download, Please Click
[Order The JN0-363 Practice Test Here](#)