

Microsoft

Exam Questions PL-900

Microsoft Power Platform Fundamentals



NEW QUESTION 1

You are building Power Apps apps that use both Dynamics 365 Sales and Microsoft 365.

For each of the following statements, select Yes if the statement is true. Otherwise, select No. NOTE: Each correct selection is worth one point.

Statement	Yes	No
Dynamics 365 Sales and Microsoft 365 must be in the same tenant to allow Single Sign-On (SSO).	<input type="radio"/>	<input type="radio"/>
You must download a product from AppSource to ensure that SSO works with Dynamics 365 Sales and Microsoft 365.	<input type="radio"/>	<input type="radio"/>

- A. Mastered
- B. Not Mastered

Answer: A

Explanation:

Box 1: No

When you offer your application for use by other companies through a purchase or subscription, you make your application available to customers within their own Azure tenants. This is known as creating a multi-tenant application.

Box 2: No

NEW QUESTION 2

You create a Power BI dashboard that displays data from Dynamics 365 Customer Engagement. You need to share the Power BI dashboard with coworkers. What are three possible ways to achieve the goal? Each correct answer presents a complete solution.

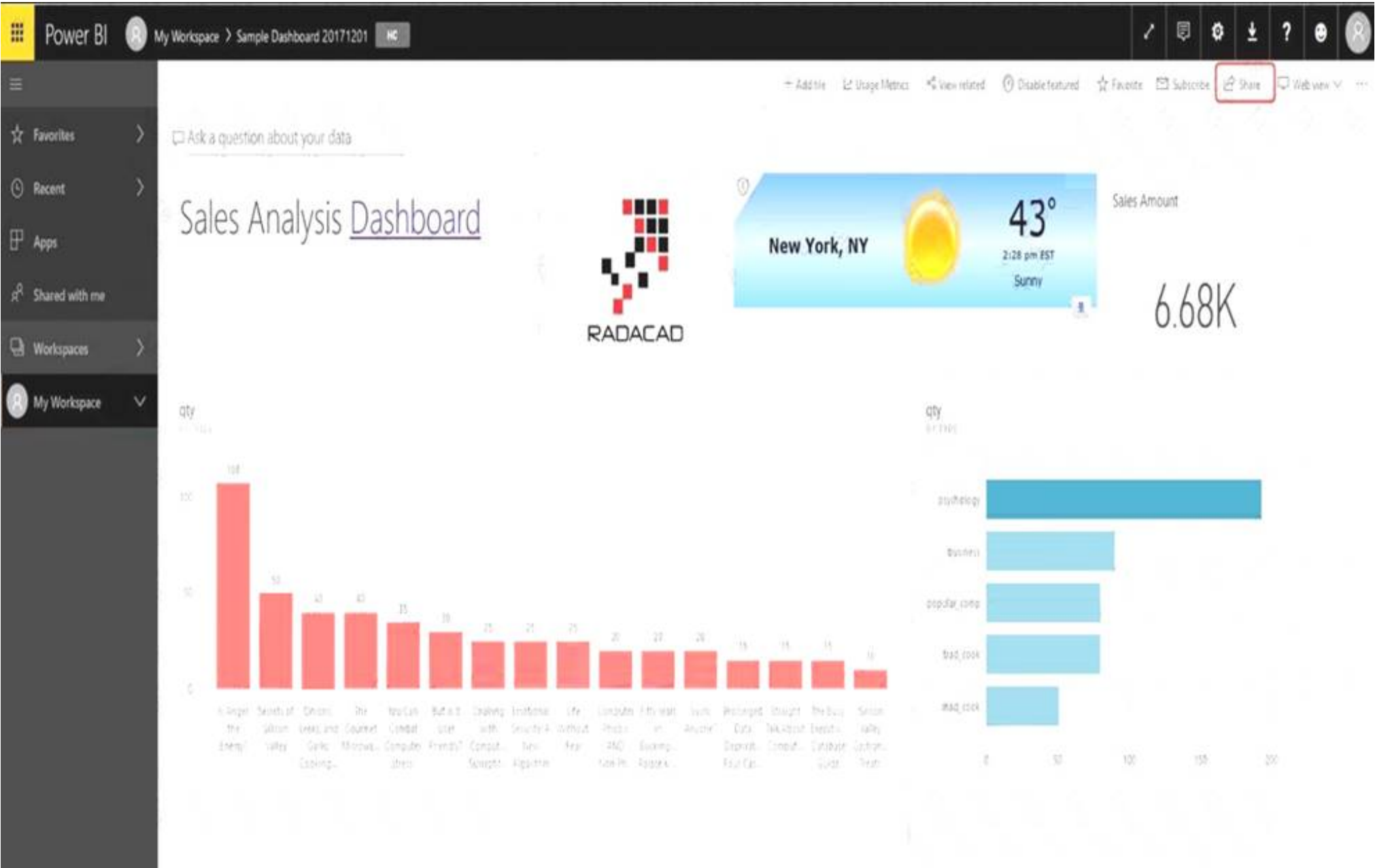
NOTE: Each correct selection is worth one point.

- A. Create a Power BI workspace and grant coworkers permissions.
- B. Publish the dashboard as an app to your coworkers.
- C. Export the data into Common Data Service for others to manipulate in Power BI.
- D. Export the data to Microsoft Excel for coworkers to import and view in Power BI.
- E. Embed reports in your company's internal web portal.

Answer: ABE

Explanation:

A: Basic Sharing for Dashboards and Reports through a workspace is the most common way of sharing the Power BI content. Basic Sharing is very simple and easy to use method. You can simply click on the Share button in the dashboard or report, and then share it with other users.



B: Apps are great sharing method for multiple environment, and best way of sharing for users in production environment. Power BI App is the solution for multiple environment approach. With Power BI App, your development environment (workspace), and user environment (App) are isolated from each other.

Note: If you are using SharePoint online as a portal for document management and some other reasons already, then consider using Embed in SharePoint Online feature of Power BI reports. This method is secure and you can share the report only with Power BI users you want.

E: Sometimes, you don't need a secure way of sharing, you may search for an easy and free way of sharing, and your content is not confidential or sensitive. Publish to web is your friend in such situation. This is the only free way of sharing in Power BI, but be aware that this method is not secure. Publish to web method, gives you an embed code, which you can use in any web pages to embed the Power BI report in it

NEW QUESTION 3

A user is trying to understand the differences between the various ways apps can be built by using Power Apps. For each of the following statements, select Yes if the statement is true. Otherwise, select No. NOTE: Each correct selection is worth one point.

Statement	Yes	No
You can embed canvas apps in model-driven apps.	<input type="radio"/>	<input type="radio"/>
A Power Apps portal can use only one data source.	<input type="radio"/>	<input type="radio"/>
You must use Power BI to create reports in model-driven apps.	<input type="radio"/>	<input type="radio"/>

- A. Mastered
- B. Not Mastered

Answer: A

Explanation:

Box 1: Yes
 You can create a canvas app and then embed that within a model driven app. Box 2: No

With the capability to build a portal in PowerApps, you can create a website for external and internal users enabling them to interact with data stored in Common Data Service.

Note: Common Data Service lets you securely store and manage data that's used by business applications. Data within Common Data Service is stored within a set of entities. An entity is a set of records used to store data, similar to how a table stores data within a database. Common Data Service includes a base set of standard entities that cover typical scenarios, but you can also create custom entities specific to your organization and populate them with data using Power Query. App makers can then use PowerApps to build rich applications using this data.

Box 3: Yes

To get started building a report you'll need the latest version of Power BI Desktop and a PowerApps environment with the latest version of the Common Data Service.

NEW QUESTION 4

You use Microsoft Flow to create a flow that automatically sends email to a project manager when project team members mark a task as complete. Project team members are prematurely marking tasks as complete. You must add quality control into the process by sending an email to a project lead for confirmation that the task is in fact complete before sending the email to the project manager. You need to modify the flow. Which component should you use?

- A. a process argument
- B. a condition
- C. an expression
- D. a trigger
- E. an action

Answer: B

Explanation:

Use a condition and set the action to send an email.

NEW QUESTION 5

A rapidly growing company wants to empower users to build apps, automate business processes, and analyze data without requiring I expertise or development skills and without increasing IT expenses and dependencies. You need to recommend tools so that users can accomplish specific tasks. Which tools should you recommend? To answer, select the appropriate options in the answer area. NOTE: Each correct selection is worth one point.

Scenario	Application
Build automatic workflows that access multiple data sources.	<div><div></div><div>AI Builder</div><div>Power Apps</div><div>Microsoft Flow</div><div>Azure Functions</div><div>Power BI</div></div>
Create custom apps that address specific business needs.	<div><div></div><div>AI Builder</div><div>Power Apps</div><div>Microsoft Flow</div><div>Azure Functions</div><div>Power BI</div></div>
Design insightful data visualizations.	<div><div></div><div>AI Builder</div><div>Power Apps</div><div>Microsoft Flow</div><div>Azure Functions</div><div>Power BI</div></div>

- A. Mastered
- B. Not Mastered

Answer: A

Explanation:

Box 1: Microsoft Flow
Microsoft Flow, now called Power Automate, is cloud-based software that allows employees to create and automate workflows and tasks across multiple applications and services without help from developers.

Box 2: Power Apps
PowerApps is a suite of apps, services, connectors and data platform that provides a rapid application development environment to build custom apps for your business needs.

Box 3: Power BI
Power BI is a business analytics solution that lets you visualize your data and share insights across your organization, or embed them in your app or website. Connect to hundreds of data sources and bring your data to life with live dashboards and reports.

NEW QUESTION 6
You build a flow using a template. You want to add support for additional business scenarios.
You need to ensure that the new workflow does not break existing functionality.
Which flow editing utilities should you use? To answer, drag the appropriate tools to the correct requirements. Each tool may be used once, more than once, or not at all. You may need to drag the split bar between panes or scroll to view content.
NOTE: Each correct selection is worth one point.

Tools	Answer Area	
	Requirement	Tool
<div>Test</div>		
<div>Flow Checker</div>	Check the new flow for any errors or warnings.	<div>Tool</div>
	Run the flow using previously processed data.	<div>Tool</div>
	Monitor the flow as it is running.	<div>Tool</div>

- A. Mastered
- B. Not Mastered

Answer: A

Explanation:
Box 1: Flow Checker
The Flow checker feature will promote higher quality flows by ensuring you follow best practices. By running the checker, you will be able to get answers to questions like: which areas of my flow implementation pose a performance or reliability risk?
For each issue identified, the Flow checker points to specific occurrences within the flow where improvements may be required. And more importantly, you learn how to implement these improvements by following detailed guidance.

Box 2: Test
Box 3: Test

NEW QUESTION 7
You need to explain the major components of the Common Data Model (CDM) and their functions. Match each term to its definition.
Instructions: To answer, drag the appropriate term from the column on the left to its definition on the right. Each term may be used once, more than once, or not at all. Each correct match is worth one point.
NOTE: Each correct selection is worth one point.

Tools	Answer Area	
	Purpose	Tool
Entities		
Data connectors	Helps jumpstart application development by leveraging business logic, security, and integrations.	Tool
Common Data Service	A set of records used to store data.	Tool
Common Data Model		
Microsoft Power Platform		
Workflows		

- A. Mastered
- B. Not Mastered

Answer: A

Explanation:

Box 1: Microsoft Power Platform
Power Platform combines the robust power of PowerApps, PowerBI, and Microsoft Flow into one powerful business application platform – providing quick and easy app building and data insights. Each component of the Microsoft Power Platform is built on the Common Data Service for Apps. Each component is dynamic by itself, but brilliant and masterful when combined.
The Microsoft Power platform brings all your data together into a common data model. Box 2: Entities
An entity is a set of records used to store data, similar to how a table stores data within a database.

NEW QUESTION 8

A company plans to create an information portal that managers can use to view critical information about their teams. You need to recommend the type of Power BI components that the company should use. What should you recommend? To answer, drag the appropriate components to the correct requirements. Each component may be used once, more than once, or not at all. You may need to drag the split bar between panes or scroll to view content. NOTE. Each correct selection is worth one point.

Component types	Answer Area	
	Requirement	Component type
Dashboard		
Report	Display data from a Microsoft Excel workbook that has multiple worksheets into one chart.	Component type
	Display the top departmental goal metrics and alert users when specific thresholds targets are met.	Component type
	Display Sales charts that can be filtered by region.	Component type

- A. Mastered
- B. Not Mastered

Answer: A

Explanation:

Box 1: Report
Reports are more detailed data displayed in many formats like chart, graphs list and in tabular, etc. Box 2: Dashboard
Dashboards are a business key performance indicator view where it displays key values that can change business profits and can be glanced at one screen. Box 3: Report
Power BI dashboards cannot slice and dice, but reports have many ways to filter and slice.
Note: Power BI dashboards are one placeholder to display the most important decision-making facts to run a business. But reports are more detailed data

displayed in many formats like chart, graphs list and in tabular, etc. Reports are based on one dataset or one business unit data for example reports of a store belonging to California.

NEW QUESTION 9

A company plans to use Power BI to visualize data from business systems.

For each of the following statements, select Yes if the statement is true. Otherwise, select No. NOTE: Each correct selection is worth one point.

Statement	Yes	No
You can display data aggregates and raw data in a Power BI report.	<input type="radio"/>	<input type="radio"/>
You can display related data from Dynamics 365 Customer Engagement and Excel in the same Power BI report.	<input type="radio"/>	<input type="radio"/>
You create a Power App to supply data for a Power BI report. You can modify the data directly in the report.	<input type="radio"/>	<input type="radio"/>

- A. Mastered
- B. Not Mastered

Answer: A

Explanation:

Box 1: Yes

The following list provides advantages to using aggregations:

Query performance over big data - as users interact with visuals on Power BI reports, DAX queries are submitted to the dataset. Boost query speeds by caching data at the aggregated level, using a fraction of the resources required at the detail level. Unlock big data in a way that would otherwise be impossible.

Box 2: No

You can connect to model-driven apps in Dynamics 365 with Power BI Desktop to create custom reports and dashboards for use with the Power BI service.

You can use similar steps to connect to model-driven apps in Dynamics 365 using Office Excel Power Query by selecting From Other Sources on the Power Query tab in Excel.

Box 3: Yes

Using the PowerApps custom visual, you will be able to pass context aware data to a PowerApps app which updates in real time as you make changes to your report.

NEW QUESTION 10

A company uses Dynamics 365 Supply Chain Management.

You need to use Microsoft Flow to automate the process of receiving and tracking raw materials. Which type of connector should you use?

- A. Common Data Service
- B. Dynamics 365
- C. Dynamics 365 for Fin & Ops
- D. Dynamic Signal

Answer: A

Explanation:

Dynamics 365 for Finance and Operations is now being licensed as Dynamics 365 Finance and Dynamics 365 Supply Chain Management.

You can use Common Data Service to enable the flow of data between Finance and Operations apps and Dynamics 365 Sales.

NEW QUESTION 10

Users within a company use Flow for personal productivity.

Users often overwrite their working flows by editing the definitions and are unable to undo changes after saving a flow.

You need to ensure that users can revert a flow to the current state.

Which two options can you use? Each correct answer presents a complete solution.

NOTE: Each correct selection is worth one point.

- A. Export
- B. Rename
- C. Save As
- D. Share

Answer: AC

Explanation:

A: You can export a flow as a package and import it into a different environment, or use it to restore the in the same environment at a later point in time.

C: The ability to make a copy of your flow is often useful when you want to create a flow similar to something you've already created. Or, if you want to maintain a

draft of your working flow as you work on adding more functionality.
Here's how:
Go to your My flows page. Click on the More (...) menu item next to the flow that you want to create a copy of. Click on the Save As command.

NEW QUESTION 15

You are designing a Power Apps solution that allows users to upload a status report directly to the company Microsoft SharePoint project management site from their mobile device.
For each of the following statements, select Yes if the statement is true. Otherwise, select No.
NOTE: Each correct selection is worth one point.

Statement	Yes	No
You should build a model-driven app in Power Apps.	<input type="radio"/>	<input type="radio"/>
You should build a canvas app in Power Apps.	<input type="radio"/>	<input type="radio"/>
Users must download and run the Power Apps mobile application to use the solution.	<input type="radio"/>	<input type="radio"/>

- A. Mastered
- B. Not Mastered

Answer: A

Explanation:

Box 1: No
Box 2: Yes
Box 3: Yes
When you create an app, or someone shares an app with you, you can run that app on Windows, iOS, Android, or in a web browser.
References:
<https://docs.microsoft.com/en-us/powerapps/maker/canvas-apps/app-from-sharepoint> <https://docs.microsoft.com/en-us/powerapps/user/run-app-client>

NEW QUESTION 16

A distribution company has multiple warehouses.
Tax rates charged on sales orders need to be calculated based on locality and region. You need to recommend a cost-effective solution that can be implemented quickly. What should you recommend?

- A. Check AppSource for a tax add-on.
- B. Create alerts in Dynamics 365 Finance for tax table changes.
- C. Implement the Common Data Model.
- D. Run a Power BI report.
- E. Write scripts and code tax updates.

Answer: B

NEW QUESTION 18

A company uses a third party application and an approval process via email. At the end of the month, the IT department enters the data into Microsoft Excel to create pivot charts.
The Excel pivot charts must use the same data source as Dynamics 365 Field Service to generate charts and reports.
You need to recommend a solution.
What should you recommend? To answer, select the appropriate configuration in the answer area.
NOTE: Each correct selection is worth one point.

Requirement

Create an approval workflow.

Solution

	▼
Dynamics 365 Workflow Notifications	
Microsoft Outlook Integration	
AI Builder	
Microsoft Flow	

Connect to report data.

	▼
Common Data Service and Power BI	
Third-party from AppSource	
Custom Code flat file integration	
Dynamics 365 Field Service	

- A. Mastered
- B. Not Mastered

Answer: A

Explanation:

Box 1: Dynamics 365 Workflow notifications

You can configure the system to send email messages to users when workflow-related events occur. Note:

- Go to Navigation pane > Modules > System administration > Users > Users.
- In the list, find and select the desired record.
- On the Action pane, click User options.
- Click the Workflow tab. Make sure that the Notifications section is expanded. In the Notifications section, you can specify how you want the user to be notified about workflow-related events.

Box 2: Dynamics 365 Field Service

Supply Chain Management enables synchronization of business processes between Dynamics 365 Supply Chain Management and Dynamics 365 Field Service. The integration scenarios are configured by using extensible Data integrator templates and Common Data Service to enable the synchronization of business processes. Standard templates can be used to create custom integration projects, where additional standard and custom fields and entities can be mapped to adjust the integration and meet specific business needs.

NEW QUESTION 22

A company uses Dynamics 365 Supply Chain Management.

When a sales order is created for one of the customers that a specific user manages, a Microsoft Outlook task must be created to remind the user to perform any follow up activities that are required.

You need to implement the functionality to create Outlook tasks.

Which two features should you use? Each correct answer presents part of the solution.

NOTE: Each correct selection is worth one point.

- A. AI Builder
- B. Power Apps
- C. Business Events
- D. Microsoft Flow
- E. Common Data Service

Answer: CD

Explanation:

Business events in Microsoft Power Automate

Business events can be consumed in Microsoft Power Automate via the application connector. The connector has a trigger that is named when a business event occurs. This trigger can be used to subscribe to any of the business events that are available in the target instance of the application.

NEW QUESTION 27

You manage the support team at a rapidly growing company.

Customers and support technicians need a better experience when logging and responding to support requests. You need more visibility into what the support technicians are doing every week.

You need to recommend tools to help the company's needs.

Which tools should you recommend? To answer, drag the appropriate tools to the correct requirements. Each tool may be used once, more than once, or not at all.

You may need to drag the split bar between panes or scroll to view content.

NOTE: Each correct selection is worth one point.

Tools	Requirement	Tool
Power Apps	Customers must be able to submit support requests by using a website.	Tool
Microsoft Flow		Tool
Power BI	Support requests must be created and stored.	Tool
Common Data Service	Support technicians must be notified when a new support request is entered.	Tool
	Support technicians must be able to enter a status report for work completed during the previous week by using a mobile app.	Tool

- A. Mastered
B. Not Mastered

Answer: A

Explanation:

Tools	Requirement	Tool
Power Apps	Customers must be able to submit support requests by using a website.	Power BI
Microsoft Flow		Common Data Service
Power BI	Support requests must be created and stored.	Microsoft Flow
Common Data Service	Support technicians must be notified when a new support request is entered.	Power Apps
	Support technicians must be able to enter a status report for work completed during the previous week by using a mobile app.	

NEW QUESTION 31

You are new to working with Microsoft Flow. You create a flow that extracts birth dates for users and then sends a birthday greeting email to users on their birthday.

The flow does not properly extract birth dates. Where should you make changes?

- A. Connectors
B. Expression
C. Templates

Answer: A

Explanation:

Select the new Date Time connector. There you will see all of the actions, which help you to convert time zones to format them for local time in an email, add or subtract times, or just get the current time.

NEW QUESTION 34

A company uses Power Apps.

You need to perform administrative tasks for the company.

Which admin centers should you use? To answer, drag the appropriate admin centers to the correct requirements. Each admin center may be used once, more than once, or not at all. You may need to drag the split bar between panes or scroll to view content.

NOTE: Each correct selection is worth one point.

Admin centers	Answer Area	Requirement	Admin center
<div>Azure Active Directory</div>			
<div>Dynamics 365 Admin center</div>		Create user accounts for Power Apps.	<div>Admin center</div>
<div>Power Apps Admin center</div>		Assign the Environment Maker role to a user.	<div>Admin center</div>
<div>Power BI Admin portal</div>			

- A. Mastered
- B. Not Mastered

Answer: A

Explanation:

Box 1: Azure Active Directory
Create the company users in the Azure Active Directory. Box 2: Power Apps admin center
In the Power Apps Admin center, manage environments that you've created and those for which you have been added to the Environment Admin or System Administrator role. From the admin center, you can perform these administrative actions:
Create environments. Rename environments.
Add or remove a user or group from either the Environment Admin or Environment Maker role. Etc.

NEW QUESTION 35

You have a Power BI report.
For each of the following statements, select Yes if the statement is true. Otherwise, select No. NOTE: Each correct selection is worth one point.

Statement	Yes	No
You can export data from a visualization in a Power BI report.	<div></div>	<div></div>
You can show the data behind a visual report on your screen without exporting the data.	<div></div>	<div></div>
You must export data to view supporting data for a KPI.	<div></div>	<div></div>

- A. Mastered
- B. Not Mastered

Answer: A

Explanation:

Box 1: Yes
If you'd like to see the data that Power BI uses to create a visualization, you can display that data in Power BI. You can also export that data to Excel as an .xlsx or .csv file. The option to export the data requires a Pro or Premium license and edit permissions to the dataset and report.
Note: Export data from a Power BI dashboard

- > Choose the Export data icon.
- > Power BI exports the data to a .csv file. If you've filtered the visualization, then the app will filter the downloaded data.
- > Your browser will prompt you to save the file. Once saved, open the .csv file in Excel.

Box 2: No

Underlying data: Select this option if you want to see the data in the visual and additional data from the model (see chart below for details). If your visualization has an aggregate, selecting Underlying data removes the aggregate. When you select Export, Power BI exports the data to an .xlsx file and your browser prompts you to save the file. Once saved, open the file in Excel.

Box 3: Yes

A KPI dataset needs to contain goal values for a KPI. If your dataset doesn't contain goal values, you can create them by adding an Excel sheet with goals to your data model or PBIX file.

Note: A Key Performance Indicator (KPI) is a visual cue that communicates the amount of progress made toward a measurable goal.

NEW QUESTION 36

A company needs to create a series of mobile applications to empower their field engineers to accomplish several tasks with varying degrees of complexity. Match each option to its answer.

Instructions: To answer, drag the appropriate app type from the column on the left to its definition on the right. Each app type may be used once, more than once, or not at all.

NOTE: Each correct match is worth one point.

App types	Answer Area
	Definition
model-driven	
dashboard	Quickly create apps for very complex business processes with very little or no code.
dataset	Create simple apps with a highly customizable user interface layouts.
canvas	

App type

App type

App type

- A. Mastered
- B. Not Mastered

Answer: A

Explanation:

Box 1: canvas

Both model-driven and canvas apps allow you to easily build business apps. They both share access to the Common Data Service providing standard and custom entities. Canvas apps start with your user experience, crafting a highly tailored interface with the power of a blank canvas and connecting it to 200 data sources. Canvas apps can be built for web, mobile, and tablet applications. Model-driven apps start with your data model – building up from the shape of your core business data and processes in the Common Data Service to model forms, views, and other components. Model-driven apps automatically generate great UI that is responsive across devices.

Box 2: model-driven

NEW QUESTION 37

.....

Thank You for Trying Our Product

We offer two products:

1st - We have Practice Tests Software with Actual Exam Questions

2nd - Questions and Answers in PDF Format

PL-900 Practice Exam Features:

- * PL-900 Questions and Answers Updated Frequently
- * PL-900 Practice Questions Verified by Expert Senior Certified Staff
- * PL-900 Most Realistic Questions that Guarantee you a Pass on Your First Try
- * PL-900 Practice Test Questions in Multiple Choice Formats and Updates for 1 Year

100% Actual & Verified — Instant Download, Please Click
[Order The PL-900 Practice Test Here](#)