



**HP**

## **Exam Questions HPE3-U01**

Aruba Certified Network Technician Exam(ACNT)

#### NEW QUESTION 1

What is a characteristic of IPv4 addresses?

- A. It is 32 bits long
- B. It is 128 bits long
- C. 12 hex-digit notation
- D. Has zero compression rule

**Answer:** A

#### NEW QUESTION 2

Which organization is in charge of determining the International Standards?

- A. Institute of Electrical and Electronics Engineers
- B. Wi-Fi Alliance
- C. Federal Communications Commission
- D. Internet Engineering Task Force

**Answer:** D

#### NEW QUESTION 3

To which wireless device category do a hardwire desktop PC belongs?

- A. stationary devices
- B. somewhat mobile devices
- C. highly mobile devices
- D. intermittent mobile devices

**Answer:** C

#### NEW QUESTION 4

What are the differences between Local-based and Server-based management? (Select two.)

- A. server-based management cannot talk to the device's control plane, local-based can
- B. in local-based, the managed device is a client, while in server-based it is a server
- C. local-based management can use the device's console port, server-based cannot
- D. local-based management requires an on-premises network management appliance
- E. server-based management can monitor multiple devices at once, local-based cannot

**Answer:** BC

#### NEW QUESTION 5

Why do clients run the Address Resolution Protocol (ARP)?

- A. To discover the destination address of the Layer 3 header of IP packets.
- B. To discover the source address of the Layer 3 header of IP packets.
- C. To discover the destination address of the Layer 2 header that encapsulates IP packets.
- D. To discover the source address of the Layer 2 header that encapsulates IP packets.

**Answer:** B

#### NEW QUESTION 6

What is part of the 5 GHz band?

- A. Channel 12 and 13
- B. U-NII 5
- C. Channels 149 to 161
- D. Channel 14

**Answer:** C

#### NEW QUESTION 7

What are the key differences between L2 switches and routers? (Select two.)

- A. Switches build an ARP table, while routers build a port table.
- B. Switches build a MAC table while routers build a routing table.
- C. Switches are considered L2 devices, while routers are L3.
- D. Switches offer a considerably higher port density than routers.
- E. Routers offer a considerably higher port density than switches.

**Answer:** BD

#### NEW QUESTION 8

On which connection type are collisions more likely to happen?

- A. Dark Fiber
- B. Fiber
- C. Copper
- D. Wi-Fi

**Answer:** D

#### NEW QUESTION 9

How many IP assignable addresses are contained in 10.0.128.0/23?

- A. 4094
- B. 254
- C. 510
- D. 512

**Answer:** D

#### NEW QUESTION 10

Which condition allows 5Ghz channels to avoid Adjacent Channel Interference?

- A. transmit at 40 MHz bandwidth
- B. transmit at high power levels
- C. transmit at low power levels
- D. transmit at 20 MHz bandwidth

**Answer:** A

#### NEW QUESTION 10

Which commands can you use to save the switch configuration changes, so they survive a switch reboot? (Select two.)

- A. copy running-config checkpoint backup
- B. store memory
- C. write memory
- D. copy running-config checkpoint startup-config
- E. save memory

**Answer:** BD

#### NEW QUESTION 12

You have connected a Multilayer switch to an Internet Service Provider router that has the 172.16.31.254 IP address. What configuration line do you have to enter on your switch to enable internet access?

- A. route 172.16.31.254 0.0.0.0 0.0.0.0
- B. ip route 0.0.0.0/0 172.16.31.254
- C. routing 0.0.0.0/0 172.16.31.254/24
- D. ip routing 0/0 172.16.31.254

**Answer:** A

#### NEW QUESTION 15

What is a true statement about wireless communications using Wi-Fi?

- A. Amplitude, phase, and frequency of radio waves are modulated to transmit data
- B. Wireless communications have a maximum range of 10 meters (30 feet)
- C. Amplitude, phase, and frequency of radio waves are modulated to increase range
- D. Wireless communications have a minimum range of 10 meters (30 feet)

**Answer:** C

#### NEW QUESTION 19

Given the 172.16.0.0 255.255.255.0 IP segment, how many IP addresses can be assigned to host and network devices?

- A. 126
- B. 6
- C. 128
- D. 4

**Answer:** C

#### NEW QUESTION 22

You are managing an ArubaOS-CX switch using the CLI. The current prompt reads "Switch(config-if>#". Which single CLI command should you issue to move back to the Manager context?

- A. end
- B. disable
- C. quit
- D. exit

**Answer:** A

#### NEW QUESTION 24

Which statements are true about Access Points? (Select two.)

- A. They use destination IP addresses to switch the packets.
- B. They bridge wireless frames to the wired network.
- C. They are used to interconnect wireless devices only.
- D. They offer wireless connectivity to endpoints.
- E. They only operate at Layer three of the OSI model.

**Answer:** AD

#### NEW QUESTION 25

Which table must clients populate to remember the L2 addressing of their neighbors?

- A. MAC Table
- B. ARP Table
- C. Routing Table
- D. Ethernet Table

**Answer:** A

#### NEW QUESTION 28

Which statement accurately describes an omnidirectional antenna?

- A. Radiates equal power in all directions in the Elevation Plane.
- B. Radiates almost equal power in all directions in the Vertical Plane.
- C. Radiates more power in a specific angle and less power in others.
- D. Radiates almost equal power in all directions in the Horizontal Plane.

**Answer:** A

#### NEW QUESTION 32

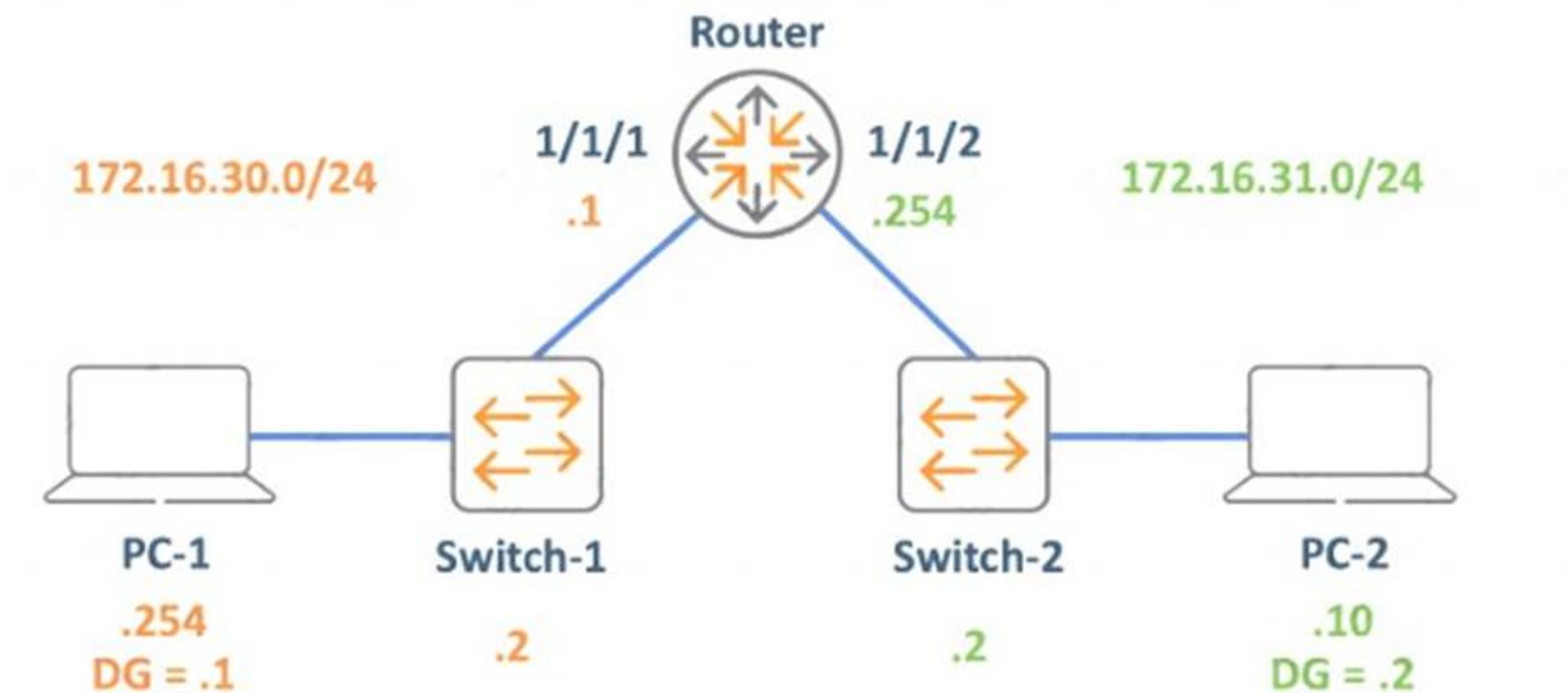
Which accurately describes the OSI Model?

- A. It is a reference model that describes data flow over the network using four layers.
- B. It is a reference model that is used to convert binary bits into analog signals.
- C. It is a reference model that explains how data is created by the application layer.
- D. It is a reference model that describes how data communications occur on a network.

**Answer:** D

#### NEW QUESTION 36

Refer to Exhibit.



The PCs are not able to successfully establish bidirectional communication. What change must you deploy to enable the communication between PC-1 and PC-2?

- A. change PC-1 's default gateway to 172.16.30.2
- B. change PC-1's IP address to 172.16.30.10
- C. change the Router's 1/1/1 interface IP to 172.16.30.254
- D. change PC-2's default gateway to 172.16.31.254

**Answer:** C

#### NEW QUESTION 40

What is considered a Layer 2 component?

- A. Router
- B. Switch
- C. Transceiver
- D. UTP cable

**Answer:** B

#### NEW QUESTION 42

Which characteristic allows switches to mitigate collisions?

- A. The switches support VLANs that segment the collision domains.
- B. The switches use L3 protocols that eliminate collisions.
- C. The switches' ports are independent collision domains.
- D. The switches have proprietary features that help eliminate collisions.

**Answer:** A

#### NEW QUESTION 45

At which section of the Aruba Central WLAN configuration Wizard can you set the Role Based controls?

- A. Access
- B. VLANs
- C. Security
- D. General

**Answer:** A

#### NEW QUESTION 48

.....

## Thank You for Trying Our Product

### We offer two products:

1st - We have Practice Tests Software with Actual Exam Questions

2nd - Questions and Answers in PDF Format

### HPE3-U01 Practice Exam Features:

- \* HPE3-U01 Questions and Answers Updated Frequently
- \* HPE3-U01 Practice Questions Verified by Expert Senior Certified Staff
- \* HPE3-U01 Most Realistic Questions that Guarantee you a Pass on Your FirstTry
- \* HPE3-U01 Practice Test Questions in Multiple Choice Formats and Updatesfor 1 Year

**100% Actual & Verified — Instant Download, Please Click**  
**[Order The HPE3-U01 Practice Test Here](#)**