

300-420 Dumps

Designing Cisco Enterprise Networks (ENSLD)

<https://www.certleader.com/300-420-dumps.html>



NEW QUESTION 1

Which control-plane technology allows the same subnet to exist across multiple network locations?

- A. LISP
- B. VXLAN
- C. FabricPath
- D. ISE mobility services

Answer: B

NEW QUESTION 2

An engineer is working with NETCONF and Cisco NX-OS based devices. The engineer needs a YANG model that supports a specific feature relevant only to Cisco NX-OS. Which model must the engineer choose?

- A. Native
- B. IEEE
- C. OpenConfig
- D. IETF

Answer: D

NEW QUESTION 3

What is an advantage of designing an out-of-band network management solution?

- A. In the event of a production network outage, network devices can still be managed.
- B. There is no separation between the production network and the management network.
- C. In the event of a production network outage, it can be used as a backup network path.
- D. It is less expensive than an in-band management solution

Answer: A

NEW QUESTION 4

Which OSPF area blocks LSA Type 3, 4 and 5, but allows a default summary route?

- A. normal
- B. stub
- C. NSSA
- D. totally stubby

Answer: D

NEW QUESTION 5

When a first hop redundancy solution is designed, which protocol ensures that load balancing occurs over multiple routers using a single virtual IP address and multiple virtual MAC addresses?

- A. GLBP
- B. IRDP
- C. VRRP
- D. HSRP

Answer: A

NEW QUESTION 6

An enterprise customer has these requirements:

- end-to-end QoS for the business-critical applications and VoIP services based on CoS marking.
- flexibility to offer services such as IPv6 and multicast without any reliance on the service provider.
- support for full-mesh connectivity at Layer 2.

Which WAN connectivity option meets these requirements?

- A. VPWS
- B. MPLS VPN
- C. DMVPN
- D. VPLS

Answer: D

NEW QUESTION 7

What is one function of the vSmart controller in an SD-WAN deployment?

- A. orchestrates vEdge and cEdge connectivity
- B. responsible for the centralized control plane of the SD-WAN network
- C. provides centralized network management and a GUI to monitor and operate the SD-WAN overlay
- D. provides a data-plane at branch offices to pass traffic through the SD-WAN network

Answer: B

NEW QUESTION 8

An engineer must design a multicast network for a financial application. Most of the multicast sources also receive multicast traffic (many-to-many deployment model). To better scale routing tables, the design must not use source trees. Which multicast protocol satisfies these requirements?

- A. PIM-SSM
- B. PIM-SM
- C. MSDP
- D. BIDIR-PIM

Answer: B

NEW QUESTION 9

Drag and drop the properties from the left onto the protocols they describe on the right.

HTTPS-based

SSH-based

built to support candidate configuration

lacks support for two-phase commit transactions

NETCONF

RESTCONF

- A. Mastered
- B. Not Mastered

Answer: A

Explanation:

HTTPS-based

SSH-based

built to support candidate configuration

lacks support for two-phase commit transactions

NETCONF

SSH-based

built to support candidate configuration

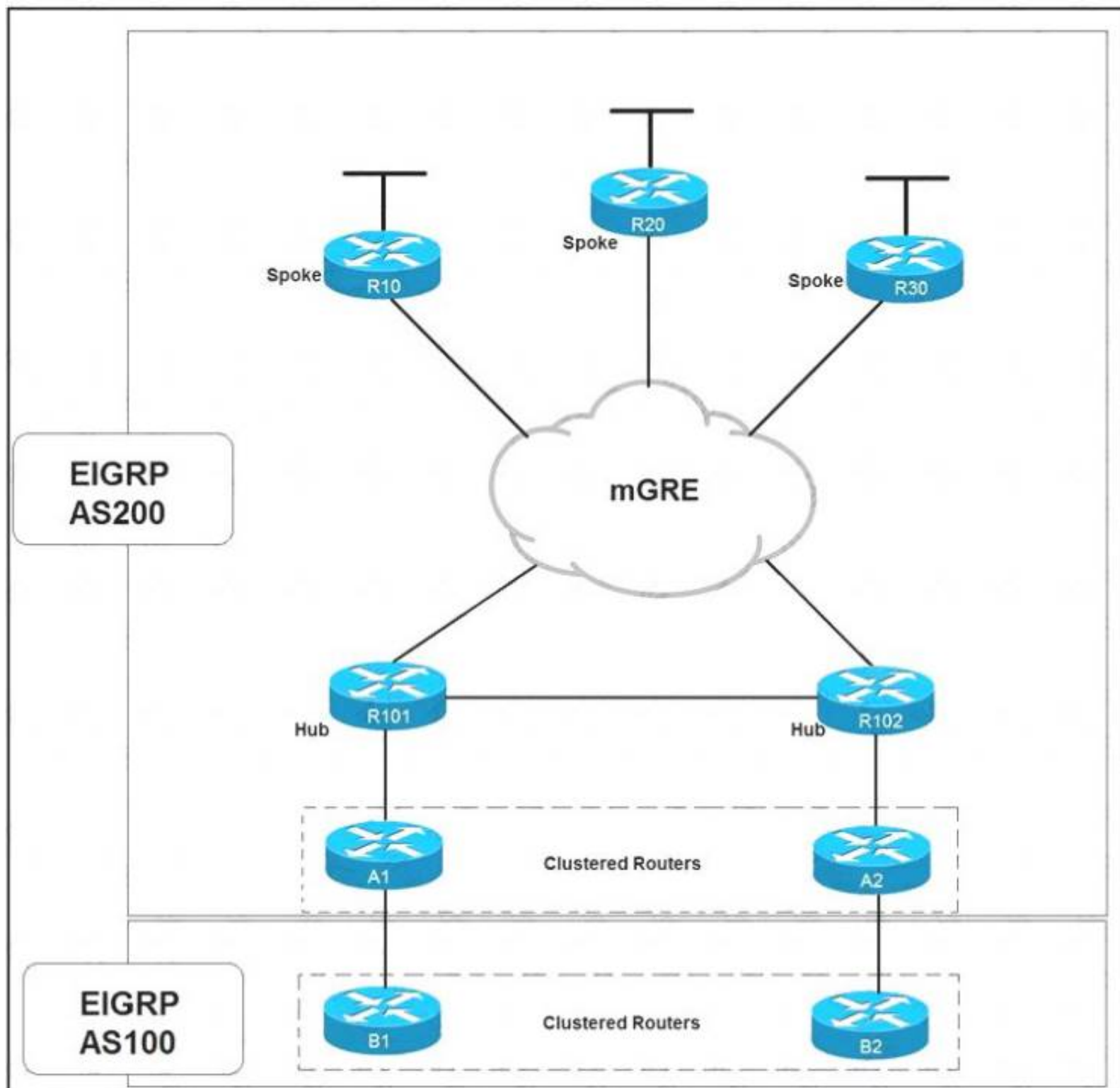
RESTCONF

HTTPS-based

lacks support for two-phase commit transactions

NEW QUESTION 10

Refer to the exhibit.



Which solution decreases the EIGRP convergence time?

- A. Enable subsecond timers
- B. Increase the hold time value
- C. Increase the dead timer value
- D. Enable stub routing on the spokes

Answer: D

NEW QUESTION 10

Which two statements describe source trees in a multicast environment? (Choose two.)

- A. Source trees guarantee the minimum amount of network latency for forwarding multicast traffic
- B. Source trees create an optimal path between the source and the receivers
- C. Source trees use a single common root placed at some chosen point in the network
- D. Source trees can introduce latency in packet delivery
- E. Source trees can create suboptimal paths between the source and the receivers

Answer: AB

NEW QUESTION 12

In an SD-WAN architecture, which methods are used to bootstrap a vEdge router?

- A. DHCP options or manual configuration
- B. vManage or DNS records
- C. ZTP or manual configuration
- D. DNS records or DHCP options

Answer: C

NEW QUESTION 17

Which two steps can be taken to improve convergence in an OSPF network? (Choose two.)

- A. Use Bidirectional Forwarding Detection
- B. Merge all the areas into one backbone area

- C. Tune OSPF parameters
- D. Make all non-backbone areas stub areas
- E. Span the same IP network across multiple areas.

Answer: CD

NEW QUESTION 22

Which function are fabric intermediate nodes responsible for in an SD-Access Architecture?

- A. mapping EIDs to RLOCs
- B. encapsulating user traffic in a VXLAN header including the SGT
- C. registering new endpoints in the HTDB
- D. transporting IP packets between edge nodes and border nodes

Answer: D

NEW QUESTION 24

Which feature is required for graceful restart to recover from a processor failure?

- A. Cisco Express Forwarding
- B. Virtual Switch System
- C. Stateful Switchover
- D. Bidirectional Forwarding Detection

Answer: A

NEW QUESTION 25

A company with multiple service providers wants to speed up BGP convergence time in the event a failure occurs with their primary link. Which approach achieves this goal and does not impact router CPU utilization?

- A. Utilize BFD and tune the multiplier to 50
- B. Lower the BGP hello interval
- C. Decrease the BGP keepalive timer
- D. Utilize BFD and keep the default BGP timers

Answer: C

NEW QUESTION 27

When IPsec VPNs are designed, what is a unique requirement if support for IP Multicast is required?

- A. encapsulation of traffic with GRE or VTI
- B. IPsec forwarding using transport mode
- C. additional bandwidth for headend
- D. IPsec forwarding using tunnel mode

Answer: A

NEW QUESTION 30

An infrastructure team is concerned about the shared memory utilization of a device, and for this reason, they need to monitor the device state. Which solution limits impact on the device and provides the required data?

- A. IPFIX
- B. static telemetry
- C. on-change subscription
- D. periodic subscription

Answer: A

NEW QUESTION 35

Which design consideration should be observed when EIGRP is configured on Data Center switches?

- A. Perform manual summarization on all Layer 3 interfaces to minimize the size of the routing table.
- B. Prevent unnecessary EIGRP neighborships from forming across switch virtual interfaces.
- C. Lower EIGRP hello and hold timers to their minimum settings to ensure rapid route reconvergence.
- D. Configure multiple EIGRP autonomous systems to segment Data Center services and applications.

Answer: A

NEW QUESTION 37

Which routes does the overlay management protocol advertise in an SD-WAN overlay?

- A. underlay, MPLS, and overlay
- B. primary, backup, and load-balanced
- C. prefix, TLOC, and service
- D. Internet, MPLS, and backup

Answer: C

NEW QUESTION 39

A customer is discussing QoS requirements with a network consultant. The customer has specified that endto- end path verification is a requirement. Which QoS solution meets this requirement?

- A. IntServ model with RSVP to support the traffic flows
- B. DiffServ model with PHB to support the traffic flows
- C. marking traffic at the access layer with DSCP to support the traffic flows
- D. marking traffic at the access layer with CoS to support the traffic flows

Answer: A

NEW QUESTION 41

Which design consideration must be made when using IPv6 overlay tunnels?

- A. Overlay tunnels that connect isolated IPv6 networks can be considered a final IPv6 network architecture.
- B. Overlay tunnels should only be considered as a transition technique toward a permanent solution.
- C. Overlay tunnels can be configured only between border devices and require only the IPv6 protocol stack.
- D. Overlay tunneling encapsulates IPv4 packets in IPv6 packets for delivery across an IPv6 infrastructure.

Answer: C

NEW QUESTION 46

What are two benefits of designing an SD-WAN network fabric with direct Internet access implemented at every site? (Choose two.)

- A. It decreases latency to applications hosted by public cloud service provider.
- B. It decreases latency on Internet circuits.
- C. It increases the speed of delivery of site deployments through zero-touch provisioning.
- D. It increases the total available bandwidth on Internet circuits.
- E. It alleviates network traffic on MPLS circuits.

Answer: AE

NEW QUESTION 50

An engineer is working with NETCONF and Cisco NX-OS based devices. The engineer needs a YANG model that supports a specific feature relevant only to Cisco NX-OS. Which model must the engineer choose?

- A. Native
- B. IEEE
- C. OpenConfig
- D. IETF

Answer: D

NEW QUESTION 52

.....

Thank You for Trying Our Product

* 100% Pass or Money Back

All our products come with a 90-day Money Back Guarantee.

* One year free update

You can enjoy free update one year. 24x7 online support.

* Trusted by Millions

We currently serve more than 30,000,000 customers.

* Shop Securely

All transactions are protected by VeriSign!

100% Pass Your 300-420 Exam with Our Prep Materials Via below:

<https://www.certleader.com/300-420-dumps.html>