

Cisco

Exam Questions 300-410

Implementing Cisco Enterprise Advanced Routing and Services (ENARSI)



NEW QUESTION 1

Which configuration enabled the VRF that is labeled "Inet" on FastEthernet0/0?

- A. R1(config)# ip vrf InetR1(config-vrf)#ip vrf FastEthernet0/0
- B. R1(config)#ip vrf Inet FastEthernet0/0
- C. R1(config)# ip vrf InetR1(config-vrf)#interface FastEthernet0/0 R1(config-if)#ip vrf forwarding Inet
- D. R1(config)#router ospf 1 vrf InetR1(config-router)#ip vrf forwarding FastEthernet0/0

Answer: C

NEW QUESTION 2

An engineer is trying to copy an IOS file from one router to another router by using TFTP. Which two actions are needed to allow the file to copy? (Choose two.)

- A. Copy the file to the destination router with the copy tftp: flash: command
- B. Enable the TFTP server on the source router with the tftp-server flash: <filename> command
- C. TFTP is not supported in recent IOS versions, so an alternative method must be used
- D. Configure a user on the source router with the username tftp password tftp command
- E. Configure the TFTP authentication on the source router with the tftp-server authentication local command

Answer: AB

NEW QUESTION 3

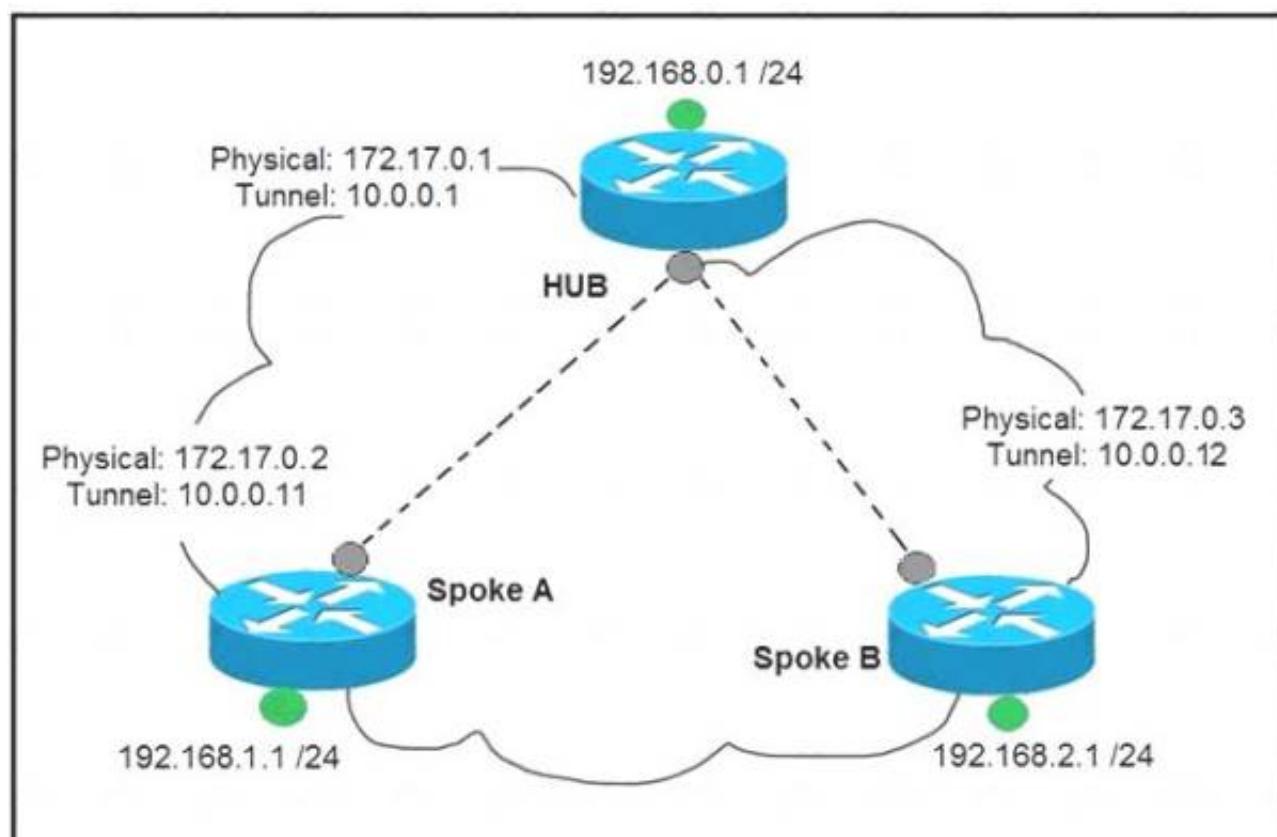
A network engineer is investigating a flapping (up/down) interface issue on a core switch that is synchronized to an NTP server. Log output currently does not show the time of the flap. Which command allows the logging on the switch to show the time of the flap according to the clock on the device?

- A. service timestamps log uptime
- B. clock summer-time mst recurring 2 Sunday mar 2:00 1 Sunday nov 2:00
- C. service timestamps log datetime localtime show-timezone
- D. clock calendar-valid

Answer: A

NEW QUESTION 4

Refer to the exhibit.



Which interface configuration must be configured on the spoke A router to enable a dynamic DMVPN tunnel with the spoke B router?

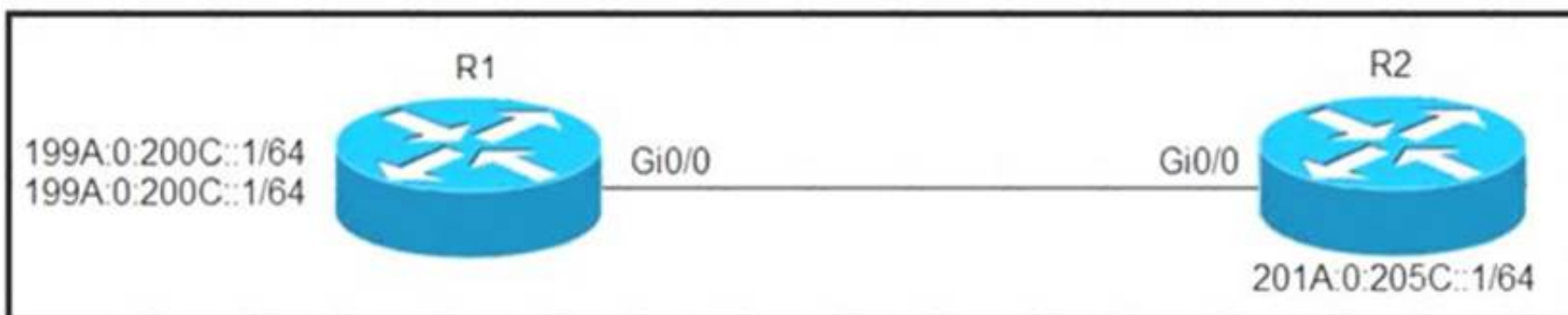
- A. **interface Tunnel0**
description mGRE – DMVPN Tunnel
ip address 10.0.0.11 255.255.255.0
ip nhrp map multicast dynamic
ip nhrp network-id 1
tunnel source 10.0.0.1
tunnel destination FastEthernet 0/0
tunnel mode gre multipoint
- B. **interface Tunnel0**
ip address 10.0.0.11 255.255.255.0
ip nhrp network-id 1
tunnel source FastEthernet 0/0
tunnel mode gre multipoint
ip nhrp nhs 10.0.0.1
ip nhrp map 10.0.0.1 172.17.0.1
- C. **interface Tunnel0**
ip address 10.1.0.11 255.255.255.0
ip nhrp network-id 1
tunnel source 1.1.1.10
ip nhrp map 10.0.0.11 172.17.0.2
tunnel mode gre
- D. **interface Tunnel0**
ip address 10.0.0.11 255.255.255.0
ip nhrp map multicast static
ip nhrp network-id 1
tunnel source 10.0.0.1
tunnel mode gre multipoint

- A. Option A
B. Option B
C. Option C
D. Option D

Answer: A

NEW QUESTION 5

Refer to the exhibit.



Which configuration denies Telnet traffic to router 2 from 198A:0:200C::1/64?

- A. `ipv6 access-list Deny_Telnet sequence 10 deny tcp host 198A:0:200C::1/64 host 201A:0:205C::1/64 eq telnet`
`!`
`int Gi0/0`
`ipv6 traffic-filter Deny_Telnet in`
`!`
- B. `ipv6 access-list Deny_Telnet sequence 10 deny tcp host 198A:0:200C::1/64 host 201A:0:205C::1/64 eq telnet`
`!`
`int Gi0/0`
`ipv6 access-map Deny_Telnet in`
`!`
- C. `ipv6 access-list Deny_Telnet sequence 10 deny tcp host 198A:0:200C::1/64 host 201A:0:205C::1/64`
`!`
`int Gi0/0`
`ipv6 access-map Deny_Telnet in`
`!`
- D. `ipv6 access-list Deny_Telnet sequence 10 deny tcp host 198A:0:200C::1/64 host 201A:0:205C::1/64`
`!`
`int Gi0/0`
`ipv6 traffic-filter Deny_Telnet in`
`!`

- A. Option A
B. Option B
C. Option C
D. Option D

Answer: A

NEW QUESTION 6

Refer to the exhibit.

```
R1(config) # do show running-config | section line|username
username cisco secret 5 $1$yb/o$L3G5cXODxpYMSJ70PzEyo0
line con 0
  logging synchronous
line vty 0 4
  login local
  transport input telnet
R1(config) # logging console 7
R1(config) # do debug aaa authentication
R1(config) #
```

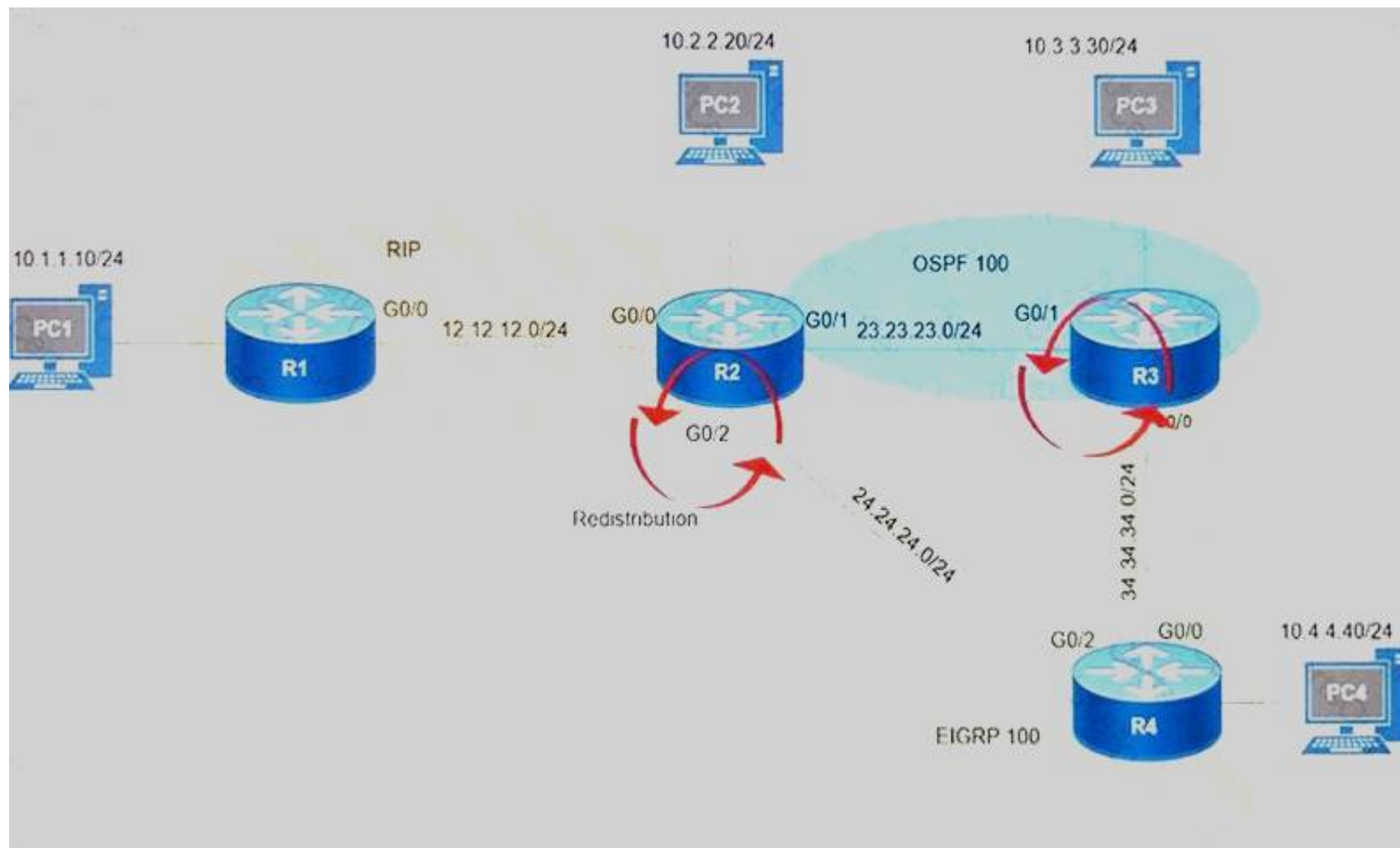
An administrator that is connected to the console does not see debug messages when remote users log in. Which action ensures that debug messages are displayed for remote logins?

- A. Enter the transport input ssh configuration command.
B. Enter the terminal monitor exec command.
C. Enter the logging console debugging configuration command.
D. Enter the aaa new-model configuration command.

Answer: B

NEW QUESTION 7

Refer to the exhibit.



After redistribution is enabled between the routing protocols; PC2, PC3, and PC4 cannot reach PC1. Which action can the engineer take to solve the issue so that all the PCs are reachable?

- A. Set the administrative distance 100 under the RIP process on R2.
- B. Filter the prefix 10.1.1.0/24 when redistributed from OSPF to EIGRP.
- C. Filter the prefix 10.1.1.0/24 when redistributed from RIP to EIGRP.
- D. Redistribute the directly connected interfaces on R2.

Answer: B

NEW QUESTION 8

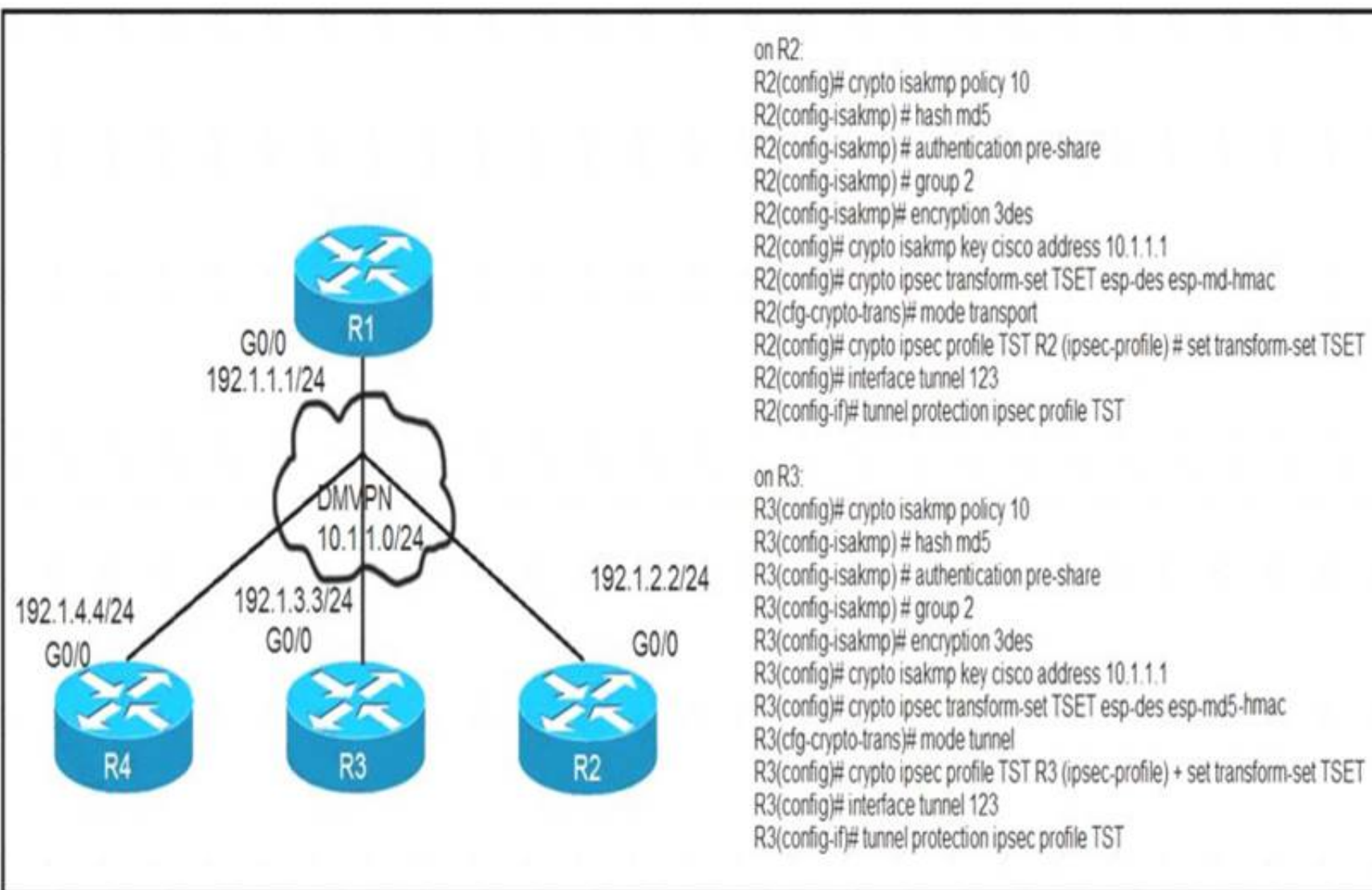
What is a prerequisite for configuring BFD?

- A. Jumbo frame support must be configured on the router that is using BFD.
- B. All routers in the path between two BFD endpoints must have BFD enabled.
- C. Cisco Express Forwarding must be enabled on all participating BFD endpoints.
- D. To use BFD with BGP, the timers 3 9 command must first be configured in the BGP routing process.

Answer: C

NEW QUESTION 9

Refer to the exhibit.



After applying IPsec, the engineer observed that the DMVPN tunnel went down, and both spoke-to-spoke and hub were not establishing. Which two actions resolve the issue? (Choose two.)

- A. Change the mode from mode tunnel to mode transport on R3.
- B. Remove the crypto isakmp key cisco address 10.1.1.1 on R2 and R3.
- C. Configure the crypto isakmp key cisco address 192.1.1.1 on R2 and R3.
- D. Configure the crypto isakmp key cisco address 0.0.0.0 on R2 and R3.
- E. Change the mode from mode transport to mode tunnel on R2.

Answer: AD

NEW QUESTION 10

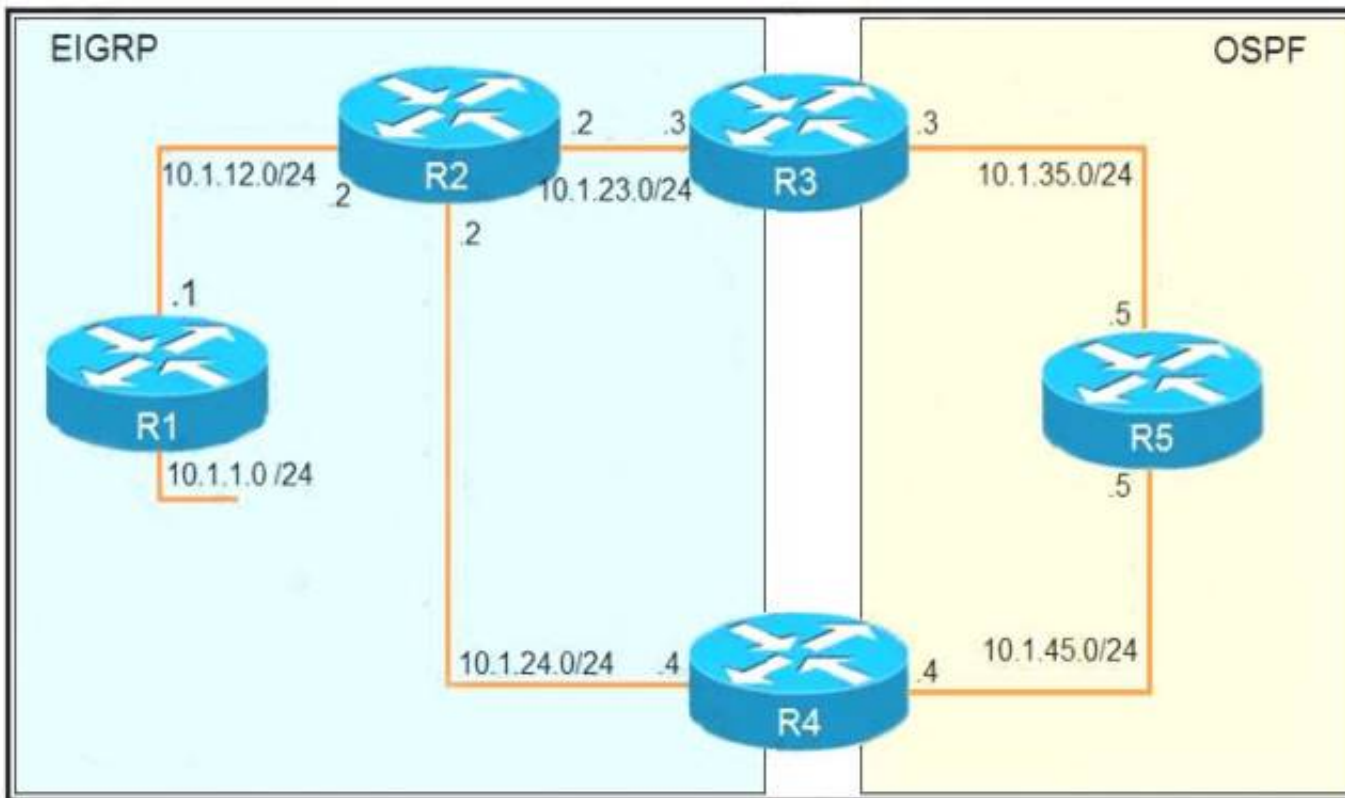
An engineer configured the wrong default gateway for the Cisco DNA Center enterprise interface during the install. Which command must the engineer run to correct the configuration?

- A. sudo maglev-config update
- B. sudo maglev install config update
- C. sudo maglev reinstall
- D. sudo update config install

Answer: A

NEW QUESTION 10

Refer to the exhibit.



```
R1
router eigrp 1
 redistribute connected
 network 10.1.12.1 0.0.0.0

R3
router ospf 1
 redistribute eigrp 1 subnets
 network 10.1.35.3 0.0.0.0 area 0

R4
router eigrp 1
 redistribute ospf 1 metric 2000000 1 255 1 1500
!
router ospf 1
 network 10.1.45.4 0.0.0.0 area 0

R5#traceroute 10.1.1.1

Type escape sequence to abort.
Tracing the route to 10.1.1.1

 1 10.1.35.3 80 msec 44 msec 20 msec
 2 10.1.23.2 44 msec 104 msec 64 msec
 3 10.1.24.4 44 msec 64 msec 40 msec
 4 10.1.45.5 24 msec 40 msec 20 msec
 5 10.1.35.3 92 msec 144 msec 148 msec
 6 10.1.23.2 108 msec 76 msec 80 msec
    <output truncated>
```

The output of the trace route from R5 shows a loop in the network. Which configuration prevents this loop?

A)

R3

```
router ospf 1
```

```
 redistribute eigrp 1 subnets route-map SET-TAG
```

```
!
```

```
route-map SET-TAG permit 10
```

```
 set tag 1
```

R4

```
router eigrp 1
```

```
 redistribute ospf 1 metric 2000000 1 255 1 1500 route-map FILTER-TAG
```

```
!
```

```
route-map FILTER-TAG deny 10
```

```
 match tag 1
```

```
!
```

```
route-map FILTER-TAG permit 20
```

B)

```
R3
router eigrp 1
 redistribute OSPF 1 route-map SET-TAG
!
route-map SET-TAG permit 10
 set tag 1
```

```
R4
router eigrp 1
 redistribute ospf 1 metric 2000000 1 255 1 1500 route-map FILTER-TAG
 network 10.1.24.4 0.0.0.0
!
route-map FILTER-TAG deny 10
 match tag 1
!
route-map FILTER-TAG permit 20
```

C)

```
R3
router ospf 1
 redistribute eigrp 1 subnets route-map SET-TAG
!
route-map SET-TAG permit 10
 set tag 1
```

```
R4
router eigrp 1
 redistribute ospf 1 metric 2000000 1 255 1 1500 route-map FILTER-TAG
!
route-map FILTER-TAG permit 10
 match tag 1
```

D)

```
R3
router ospf 1
 redistribute eigrp 1 subnets route-map SET-TAG
!
route-map SET-TAG deny 10
 set tag 1
```

```
R4
router eigrp 1
 redistribute ospf 1 metric 2000000 1 255 1 1500 route-map FILTER-TAG
!
route-map FILTER-TAG deny 10
 match tag 1
```

- A. Option A
- B. Option B
- C. Option C
- D. Option D

Answer: B

NEW QUESTION 15

Which command allows traffic to load-balance in an MPLS Layer 3 VPN configuration?

- A. multi-paths eibgp 2
- B. maximum-paths 2
- C. maximum-paths ibgp 2
- D. multi-paths 2

Answer: B

NEW QUESTION 17

While troubleshooting connectivity issues to a router, these details are noticed:

- Standard pings to all router interfaces, including loopbacks, are successful.
- Data traffic is unaffected.
- SNMP connectivity is intermittent.
- SSH is either slow or disconnects frequently.

Which command must be configured first to troubleshoot this issue?

- A. show policy-map control-plane
- B. show policy-map
- C. show interface | inc drop
- D. show ip route

Answer: A

NEW QUESTION 18

Refer to the exhibit.

```
R1#show running-config | include aaa
aaa new-model
aaa authentication login default group tacacs+ local
aaa authentication login Console local
R1#show running-config | section line
line con 0
  logging synchronous
R1#
```

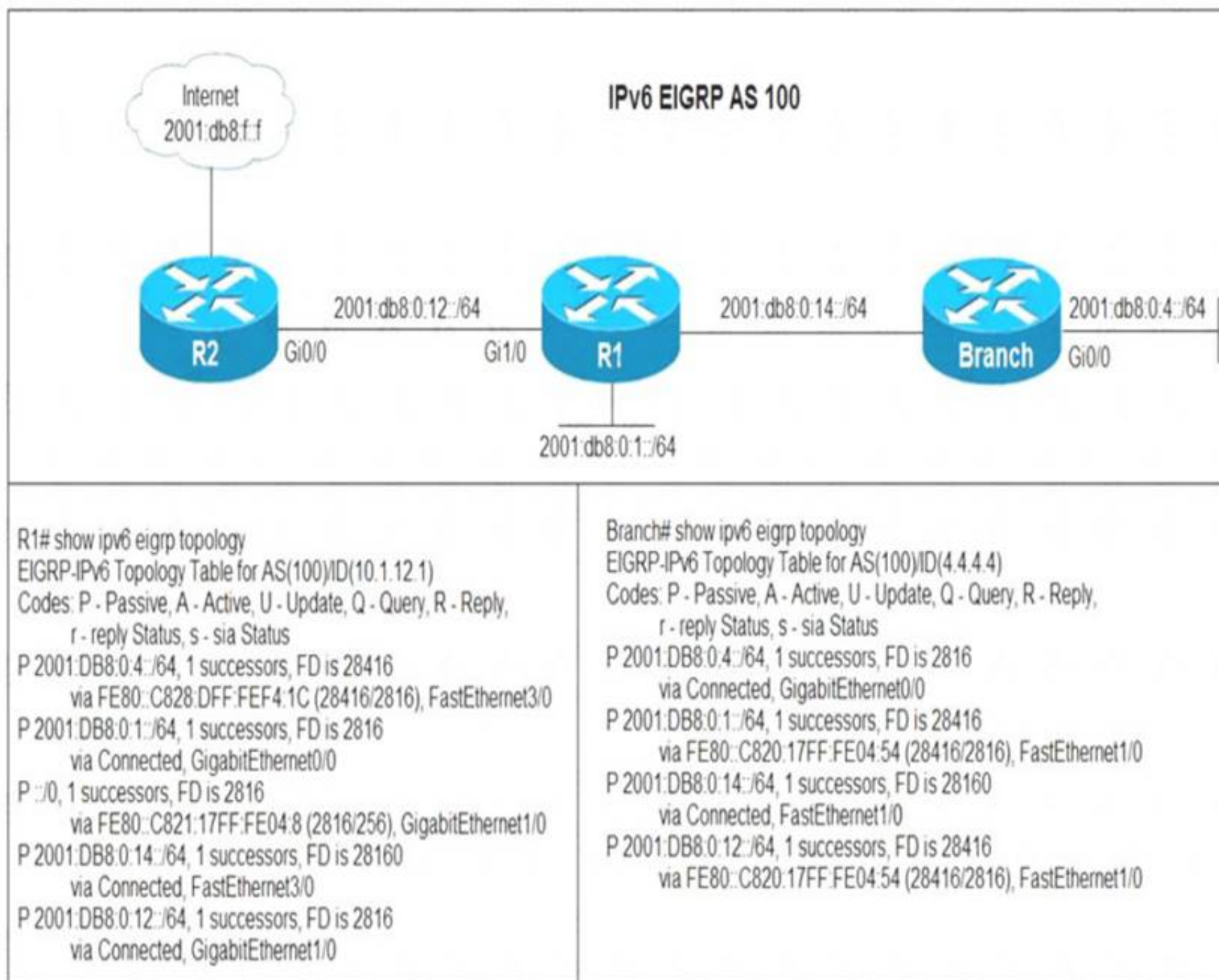
An engineer is trying to configure local authentication on the console line, but the device is trying to authenticate using TACACS+. Which action produces the desired configuration?

- A. Add the aaa authentication login default none command to the global configuration.
- B. Replace the capital "C" with a lowercase "c" in the aaa authentication login Console local command.
- C. Add the aaa authentication login default group tacacs+ local-case command to the global configuration.
- D. Add the login authentication Console command to the line configuration

Answer: D

NEW QUESTION 23

Refer to the exhibit.



Users in the branch network of 2001:db8:0:4::/64 report that they cannot access the Internet. Which command is issued in IPv6 router EIGRP 100 configuration mode to solve this issue?

- A. Issue the eigrp stub command on R1.
- B. Issue the no eigrp stub command on R1.
- C. Issue the eigrp stub command on R2.
- D. Issue the no eigrp stub command on R2.

Answer: A

NEW QUESTION 26

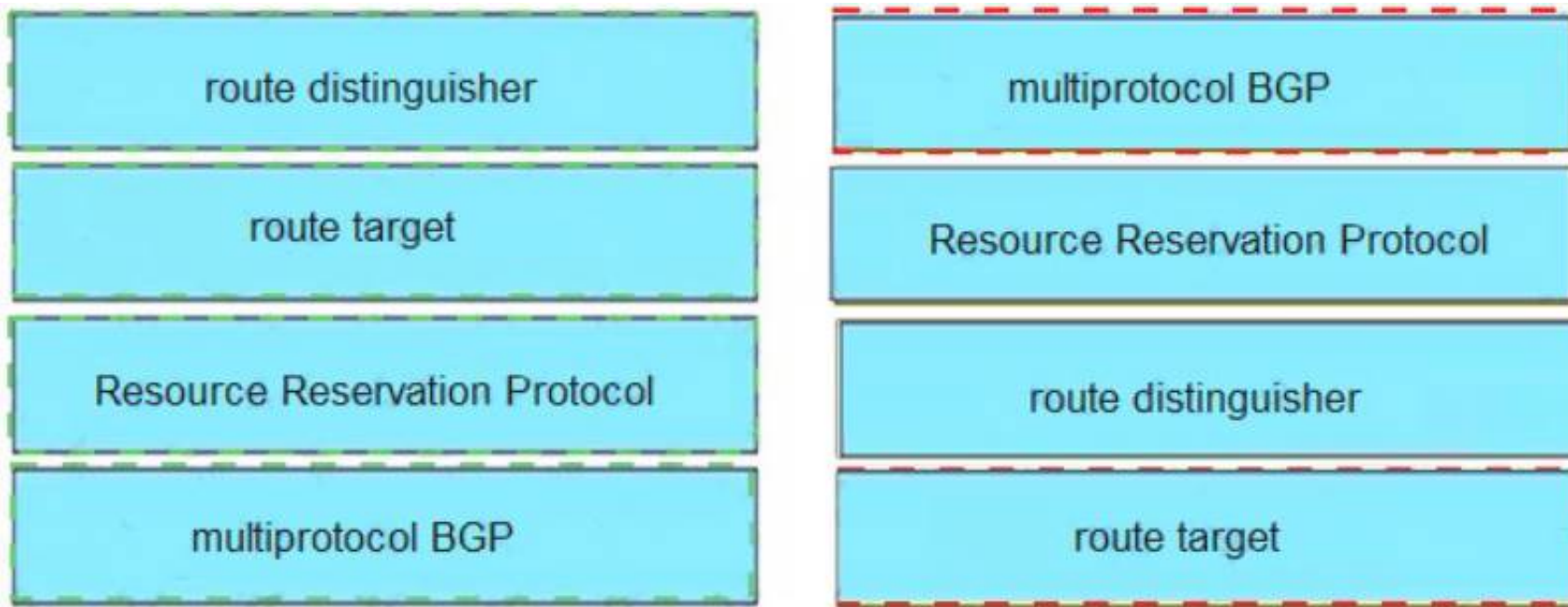
Drag and drop the MPLS VPN concepts from the left onto the correct descriptions on the right.

route distinguisher	propagates VPN reachability information
route target	distributes labels for traffic engineering
Resource Reservation Protocol	uniquely identifies a customer prefix
multiprotocol BGP	controls the import/export of customer prefixes

- A. Mastered
- B. Not Mastered

Answer: A

Explanation:



NEW QUESTION 30

Which method changes the forwarding decision that a router makes without first changing the routing table or influencing the IP data plane?

- A. nonbroadcast multiaccess
- B. packet switching
- C. policy-based routing
- D. forwarding information base

Answer: C

NEW QUESTION 32

Refer to the exhibit.

```
Router#show ip route
<output omitted>
Gateway of last resort is not set

    192.168.1.0/32 is subnetted, 1 subnets
O       192.168.1.1 [110/11] via 192.168.12.1, 16:56:40, Ethernet0/0
    192.168.2.0/24 is variably subnetted, 2 subnets, 2 masks
C       192.168.2.0/24 is directly connected, Loopback0
L       192.168.2.2/32 is directly connected, Loopback0
    192.168.3.0/24 is variably subnetted, 2 subnets, 2 masks
C       192.168.3.0/24 is directly connected, Ethernet0/1
L       192.168.3.1/32 is directly connected, Ethernet0/1
    192.168.12.0/24 is variably subnetted, 2 subnets, 2 masks
C       192.168.12.0/24 is directly connected, Ethernet0/0
L       192.168.12.2/32 is directly connected, Ethernet0/0
Router#show running-config | section ospf
router ospf 1
  summary-address 10.0.0.0 255.0.0.0
  redistribute static subnets
  network 192.168.3.0 0.0.0.255 area 0
  network 192.168.12.0 0.0.0.255 area 0
Router#
```

An engineer is trying to generate a summary route in OSPF for network 10.0.0.0/8, but the summary route does not show up in the routing table. Why is the summary route missing?

- A. The summary-address command is used only for summarizing prefixes between areas.
- B. The summary route is visible only in the OSPF database, not in the routing table.
- C. There is no route for a subnet inside 10.0.0.0/8, so the summary route is not generated.
- D. The summary route is not visible on this router, but it is visible on other OSPF routers in the same area.

Answer: A

NEW QUESTION 35

Which statement about IPv6 RA Guard is true?

- A. It does not offer protection in environments where IPv6 traffic is tunneled.

- B. It cannot be configured on a switch port interface in the ingress direction.
- C. Packets that are dropped by IPv6 RA Guard cannot be spanned.
- D. It is not supported in hardware when TCAM is programmed.

Answer: A

NEW QUESTION 36

Which statement about MPLS LDP router ID is true?

- A. If not configured, the operational physical interface is chosen as the router ID even if a loopback is configured.
- B. The loopback with the highest IP address is selected as the router ID.
- C. The MPLS LDP router ID must match the IGP router ID.
- D. The force keyword changes the router ID to the specified address without causing any impact.

Answer: B

NEW QUESTION 38

Refer to the exhibit.

R1 #show ip bgp summary BGP router identifier 192.168.1.1, local AS number 65000 <output omitted>										
Neighbor	V	AS	MsgRcvd	MsgSent	Tblver	InQ	OutQ	Up/Down	State/PfxRcd	
192.168.2.2	4	65000	28	28	22	0	0	00:21:31		0
R1#show ip bgp BGP table version is 22, local router ID is 192.168.1.1 Status codes: s suppressed, d damped, h history, * valid, > best, i – internal, r RIB-failure, s stale, m multipath, b backup-path, f RT-Filter, x best-external, a additional-path, C RIB-compressed, Origin codes: i – IGP, e – EGP, ? – incomplete RPKI validation codes: V valid, I invalid, N Not found										
	Network		Next Hop		Metric	LocPrf		Weight		Path
*>	172.16.25.0/24		209.165.200.225		0			32768		?
R1#										
R2 #show ip bgp summary BGP router identifier 192.168.2.2, local AS number 65000 <output omitted>										
Neighbor	V	AS	MsgRcvd	MsgSent	Tblver	InQ	OutQ	Up/Down	State/PfxRcd	
192.168.1.1	4	65000	29	28	3	0	0	00:22:07		1
192.168.3.3	4	65000	7	8	3	0	0	00:02:55		0
R2#show ip bgp BGP table version is 3, local router ID is 192.168.2.2 Status codes: s suppressed, d damped, h history, * valid, > best, i – internal, r RIB-failure, s stale, m multipath, b backup-path, f RT-Filter, x best-external, a additional-path, C RIB-compressed, Origin codes: i – IGP, e – EGP, ? – incomplete RPKI validation codes: V valid, I invalid, N Not found										
	Network		Next Hop		Metric	LocPrf		Weight		Path
* i	172.16.25.0/24		209.165.200.225		0	100		0		?
R2#										
R3 #show ip bgp summary BGP router identifier 192.168.3.3, local AS number 65000 BGP table version is 4, main routing table version 4										
Neighbor	V	AS	MsgRcvd	MsgSent	Tblver	InQ	OutQ	Up/Down	State/PfxRcd	
192.168.2.2	4	65000	8	7	4	0	0	00:03:08		0
R3#										

R2 is a route reflector, and R1 and R3 are route reflector clients. The route reflector learns the route to 172.16.25.0/24 from R1, but it does not advertise to R3. What is the reason the route is not advertised?

- A. R2 does not have a route to the next hop, so R2 does not advertise the prefix to other clients.
- B. Route reflector setup requires full IBGP mesh between the routers.
- C. In route reflector setup, only classful prefixes are advertised to other clients.
- D. In route reflector setups, prefixes are not advertised from one client to another.

Answer: A

NEW QUESTION 40

Which statement about IPv6 ND inspection is true?

- A. It learns and secures bindings for stateless autoconfiguration addresses in Layer 3 neighbor tables.
- B. It learns and secures bindings for stateless autoconfiguration addresses in Layer 2 neighbor tables.
- C. It learns and secures bindings for stateful autoconfiguration addresses in Layer 3 neighbor tables.
- D. It learns and secures bindings for stateful autoconfiguration addresses in Layer 2 neighbor tables.

Answer: B

NEW QUESTION 43

.....

Thank You for Trying Our Product

We offer two products:

1st - We have Practice Tests Software with Actual Exam Questions

2nd - Questions and Answers in PDF Format

300-410 Practice Exam Features:

- * 300-410 Questions and Answers Updated Frequently
- * 300-410 Practice Questions Verified by Expert Senior Certified Staff
- * 300-410 Most Realistic Questions that Guarantee you a Pass on Your First Try
- * 300-410 Practice Test Questions in Multiple Choice Formats and Updates for 1 Year

100% Actual & Verified — Instant Download, Please Click
[Order The 300-410 Practice Test Here](#)