

Exam Questions 350-601

Implementing and Operating Cisco Data Center Core Technologies

<https://www.2passeasy.com/dumps/350-601/>



NEW QUESTION 1

Which product includes prebuilt templates that can be used to customize fabric deployments?

- A. Cisco ACI
- B. Cisco UCS Manger
- C. Cisco data Center Network Manger
- D. Cisco Tetration

Answer: C

Explanation:

<https://www.cisco.com/c/en/us/products/collateral/cloud-systems-management/prime-data-center-networkmanag>

https://www.cisco.com/c/en/us/td/docs/switches/datacenter/sw/11_2_1/config_guide/lanfabric/b_dcnm_fabric_lan/template_usage.html

NEW QUESTION 2

A customer wants to offload some of its order processing to a public cloud environment. The customer environment is based on Cisco ACI and uses Puppet with containenized applications. The operations team requires a solution to orchestrate and optimize the cost of the new solution. Which product must be used to meet these requirements?

- A. Cisco Intersight
- B. Cisco Workload Optimization Manager
- C. Cisco CloudCenter
- D. Cisco Data Center Network Manager

Answer: C

Explanation:

<https://www.cisco.com/c/dam/en/us/products/collateral/cloud-systems-management/cloudcenter/white-paper-c1>

- Enforce multicloud governance by guiding user decisions to reduce risk
- Securely automate deployment to reduce manual effort and get consistent results
- Increase feature velocity via integration with developer tools to accelerate time to market (CI/CD = Puppet, Chef, and Ansible).
- Optimize cloud consumption to cut pay-per-use cloud costs

<https://www.cisco.com/c/en/us/products/collateral/cloud-systems-management/cloudcenter-suite/datasheet-c78>

NEW QUESTION 3

A network administrator must configure an extra keyring in Cisco UCS Manager. The key must provide a high level of encryption and secure authentication when users use the web interface. Which configuration command set must be applied to meet these requirements?

☒ set https keyring kring7984
set https cipher-suite-mode secure
set https ssl-protocol tls1-2
commit-buffer

☐ set https keyring kring7984
set https cipher-suite-mode secure
set https tls-protocol tls1-2
commit-buffer

☐ set https keyring kring7984
set https cipher-suite-mode high
set https ssl-protocol tls1-2#
commit-buffer

☐ set https keyring kring7984
set https cipher-suite-mode high
set https tls-protocol tls1-2
commit-buffer

- A. Option A
- B. Option B
- C. Option C
- D. Option D

Answer: C

Explanation:

https://www.cisco.com/c/en/us/td/docs/unified_computing/ucs/ucs-manager/CLI-User-Guides/Admin-Managem “cipher-suite-mode secure” is invalid command.

“Cipher-suite-mode high” is valid command. “tls-protocol tls1-2” is invalid command. “Ssl-protocol tls1-2” is valid command.

```
UCS-A# scope system
UCS-A /system # scope services
UCS-A /system/services # enable https
UCS-A /system/services* # set https port 443
Warning: When committed, this closes all the web sessions.
UCS-A /system/services* # set https keyring kring7984
UCS-A /system/services* # set https cipher-suite-mode high
UCS-A /system/services* # set https ssl-protocol tls1-2
UCS-A /system/services* # commit-buffer
UCS-A /system/services #
```

NEW QUESTION 4

Refer to the exhibit

```
#!/bin/bash
### BEGIN INIT INFO
# Provides:      capture
# Required-Start: $local_fs $network $named $time $syslog
# Required-Stop: $local_fs $network $named $time $syslog
# Description:   Continuous capture script
### END INIT INFO

start() {
    tcpdump -W 3 -C 100 -i Eth1-42 -w /tmp/capture.pcap &
    RETVAL=$?
}

stop() {
    killall -9 tcpdump
    RETVAL=$?
}

case "$1" in
    start)
        start
        ;;
    stop)
        stop
        ;;
    *)
        echo "Usage: $0 {start|stop}"
        RETVAL=2
esac

exit $RETVAL
```

A network engineer must run a continuous capture on a port A script called "capture" is created to start and stop the capture task Which command sequence makes the capture persistent after a reboot?

- ☐ initctl add capture
initctl init capture
- ☐ chkconfig --add capture
chkconfig --level 3 capture
- ☐ systemctl enable capture
systemctl start capture
- ☐ run bash /etc/init.d/capture
run bash start-stop-daemon

- A. Option A
- B. Option B
- C. Option C
- D. Option D

Answer: C

NEW QUESTION 5

A company plans to migrate some of its services to the cloud. The company does not want to manage or control the underlying cloud infrastructure. It also wants to maintain control over the deployment of its applications and configuration settings of the application-hosting environment. Which cloud service model meets these requirements?

- A. Infrastructure as a Service
- B. Function as a Service
- C. Platform as a Service

D. Software as a Service

Answer: C

NEW QUESTION 6

An engineer must configure HSRP protocol on two Cisco Nexus 9000 Series Switches running a virtual port channel. In addition, the HSRP implementation must meet these requirements:

- It must allow more than 500 groups.
- switch 1 must act as the primary switch.
- Both switches must use a user-defined hardware address.

Drag and drop the commands from the right to complete a configuration of the HSRP on the left. The commands are used more than once. Not all commands are used.

```
! switch1

interface vlan300
ip 209.165.200.226/27
hsrp 300

```

```
ip 209.165.200.225

```

```
! switch2

interface vlan300
ip 209.165.200.227/27
hsrp 300

```

```
ip 209.165.200.225

```

mac-address 6000.6000.6000

hsrp version 1

priority 255

hsrp use-bia

priority 100

hsrp version 2

- A. Mastered
 B. Not Mastered

Answer: A

Explanation:

Switch 1:
 Box 1 = hsrp version 2
 Box 2 = priority 100
 Box 3 = mac-address 6000.6000.6000
 Switch 2:
 Box 1 = hsrp version 2
 Box 2 = priority 255
 Box 3 = mac-address 6000.6000.6000

NEW QUESTION 7

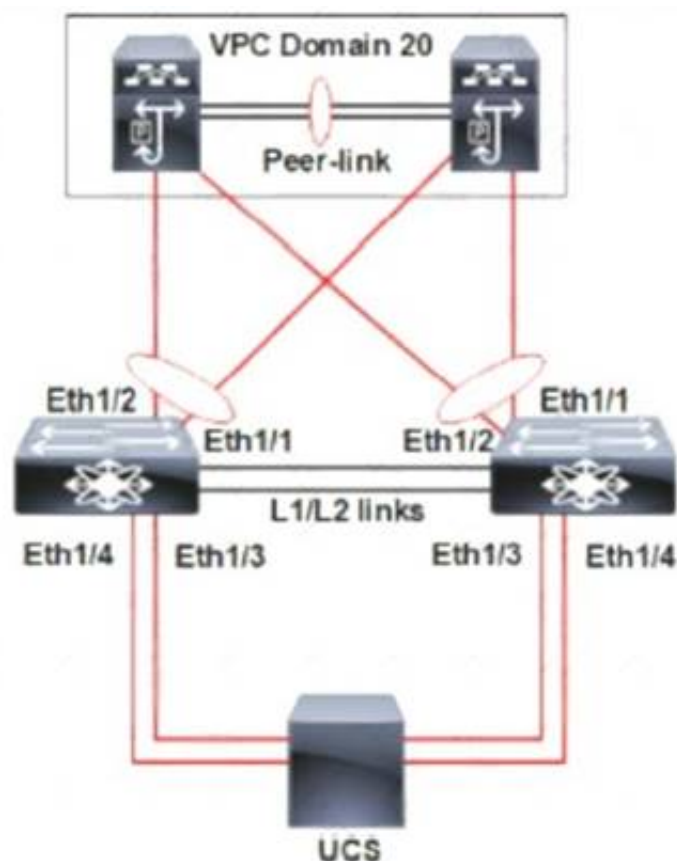
An engineer must configure a Cisco UCS domain for monitoring and management by the Cisco Intersight SaaS platform. After the setup is complete, administrators must have full control to configure the device through Cisco UCS Manager and Intersight. Which set of actions accomplishes this task?

- A. Configure Device Connector Access Mode as Allow Control in Device Console Claim the device on Intersight as UCSM Managed Mode.
 B. Configure Device Connector Access Mode as Allow Control in Cisco UCS Manager Claim the device on intersightc as Intersight Managed Mode
 C. Configure Device Connector Access Moao as Allow Control in Device Consol
 D. Claim the device on intersight as Intersight Managed Mode
 E. Configure Device Connector Access Mode as Allow Control in Cisco UCS Manager Claim the device on intersight as UCSM Managed Mode
 F. Option A
 G. Option B
 H. Option C
 I. Option D

Answer: C

NEW QUESTION 8

Refer to the exhibit.



A pair of Cisco Nexus switches form a vPC. A new chassis is added to the pre-existing Cisco UCS domain. A new chassis must be discovered, and all links from the chassis to the LAN network must be established. Which set of actions accomplishes these requirements?

- ☐ Set the chassis discovery policy action to four links.
Configure Eth1/3 and Eth1/4 as server ports.
Acknowledge the chassis.
- ☒ Set the chassis discovery policy action to four links.
Configure Eth1/1 and Eth1/2 as uplink Fibre Channel ports.
Set the link group preference to None.
- ☐ Set the chassis discovery policy action to one link.
Configure Eth1/1 and Eth1/2 as uplink Ethernet ports.
Set the link group preference to Port Channel.
- ☐ Set the chassis discovery policy action to one link.
Configure Eth1/3 and Eth1/4 as server ports.
Acknowledge the chassis.

- A. Option A
- B. Option B
- C. Option C
- D. Option D

Answer: C

NEW QUESTION 9

A company is investigating different options for IT automation tools. The IT team has experience with python programming language and scripting using a declarative language. The proposed tool should be easy to set up and should not require installing an agent on target devices. The team will also need to build custom modules based on the python programming language to extend the tools functionality. Which automation tool should be used to meet these requirements?

- A. Puppet
- B. Ansible
- C. NX-API
- D. Chef

Answer: B

NEW QUESTION 10

Refer to the exhibit.

```
FI-1# scope org /
FI-1 /org # create maint-policy maintenance
FI-1 /org/maint-policy* # set reboot-policy timer-automatic
FI-1 /org/maint-policy* # set soft-shutdown-timer never
```

Which action must be taken before the maintenance policy can be committed?

- A. Set the soft shutdown timer to a specific time.
- B. Associate a service profile to the maintenance policy.
- C. Set the policy to apply the change on the next reboot.
- D. Specify a maintenance time by selecting a schedule.

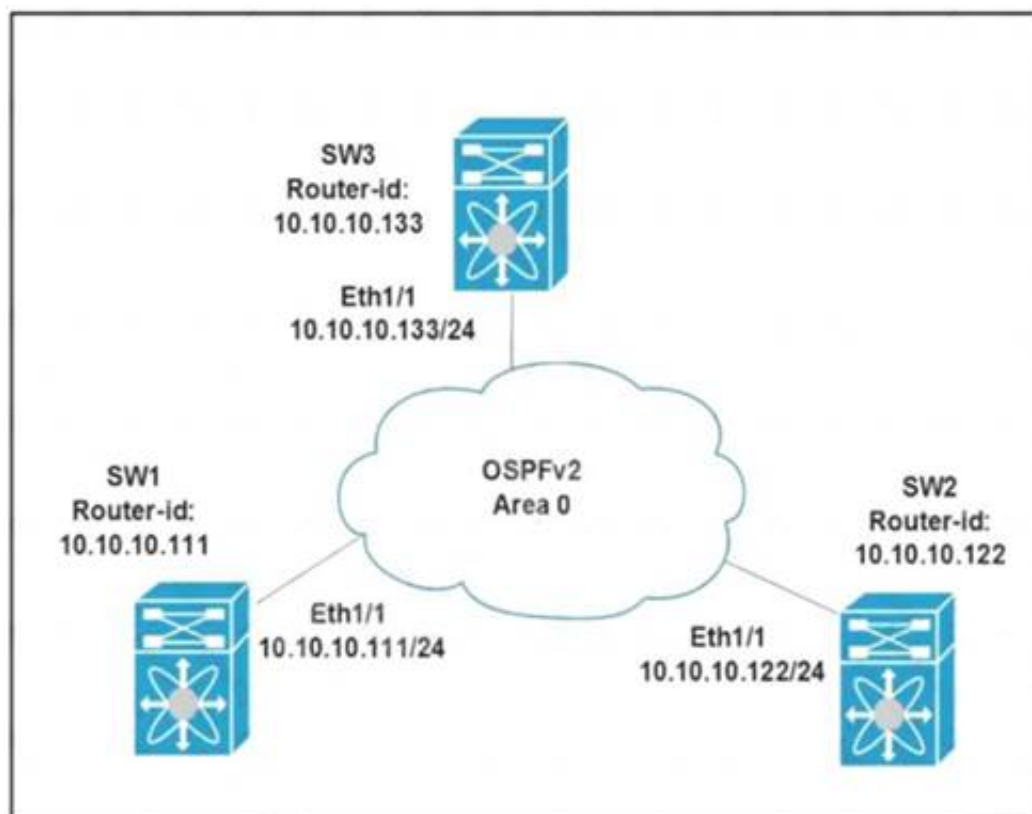
Answer: D

Explanation:

https://www.cisco.com/c/en/us/td/docs/unified_computing/ucs/ucs-manager/CLI-User-Guides/Admin-Management/3-1/b_Cisco_UCS_Manager_CLI_Administration_Mgmt_Guide_3_1/b_Cisco_UCS_Manager_CLI_Administration_Mgmt_Guide_3_1_chapter_01100.html

NEW QUESTION 10

Refer to the exhibit.



All switches are configured with the default OSPF priority. Which configuration should be applied to ensure that the SW2 Cisco Nexus switch controls the LSA floods and advertises the network to the remaining nodes in the OSPFv2 area?

- A. SW2# configure terminal SW2 (config)# interface ethernet 1/1 SW2 (config-if)# ip ospf priority 255
- B. SW2# configure terminal SW2 (config)# interface ethernet 1/1 SW2 (config-if)# ip ospf priority 1
- C. SW2# configure terminal SW2 (config)# router ospf 1 SW2 (config-router)# router-id 10.10.10.22
- D. SW2# configure terminal SW2 (config)# interface ethernet 1/1 SW2 (config-if)# ip ospf priority 0

Answer: A

Explanation:

Priority in OSPF is mainly used to influence/determine a designated router/backup designated router for a network. By default, the priority is 1 on all routers. A router with a high priority will always win the DR/BDR election process.

NEW QUESTION 11

A server engineer wants to control power uses on a Cisco UCS C-series rack server down to the component level. Which two components support specific power limits? (Choose two.)

- A. memory
- B. graphic card
- C. processor
- D. network controller
- E. storage controller

Answer: AC

NEW QUESTION 16

An engineer is enabling port security on a Cisco MDS 9000 Series Switch. Which feature of enabling port security on a Cisco MDS 9000 Series Switch must be considered?

- A. It always learns about switches that are logging in.
- B. It can be distributed by using Cisco Fabric services.
- C. It authorizes only the configured sWWN to participate in the fabric.
- D. It binds the fabric at the switch level.

Answer: B

Explanation:

Port Security Configuration Distribution

The port security feature uses the Cisco Fabric Services (CFS) infrastructure to enable efficient database management, provide a single point of configuration for the entire fabric in the VSAN, and enforce the port security policies throughout the fabric.

https://www.cisco.com/c/en/us/td/docs/switches/datacenter/mds9000/sw/6_2/configuration/guides/security/nx-o

NEW QUESTION 17

What is a feature of NFS?

- A. role-based access control
- B. Kerberos-based security model
- C. block-based file access
- D. zone-based access control

Answer: B

Explanation:

<https://www.cisco.com/c/en/us/support/docs/security-vpn/kerberos/16087-1.html#modifiednfs>

Kerberos Security Implications of the Modified NFS

This implementation is not completely secure. For starters, user data is still sent across the network in an unencrypted, and therefore interceptable, form. The low-level, per-transaction authentication is based on a <CLIENT-IP-ADDRESS, CLIENT-UID> pair provided unencrypted in the request packet. This information could be forged and thus security compromised. However, it should be noted that only while a user is actively using her/his files (that is, while logged in) are valid mappings in place and therefore this form of attack is limited to when the user in question is logged in. When a user is not logged in, no amount of IP address forgery will permit unauthorized access to her/his files.

NEW QUESTION 19

Which two configuration settings are available in the Cisco UCS Firmware Auto Sync Server policy? (Choose two.)

- A. Immediate Action
- B. User Acknowledge
- C. No Action
- D. Delayed Action
- E. User Notification

Answer: BC

NEW QUESTION 22

A storage administrator notices an increasing number of storage targets that unexpectedly reach capacity, causing periodic service interruptions. The administrator must now create and submit a daily report of the environment that shows the status of the storage targets with the highest capacities. Which solution provides this information?

- A. Nagios Core with OpManager
- B. Cisco DCNM with SAN Insight
- C. SolarWinds with Slow Drain Analysis
- D. Cisco Intersight with Slow Drain Analysis

Answer: D

NEW QUESTION 23

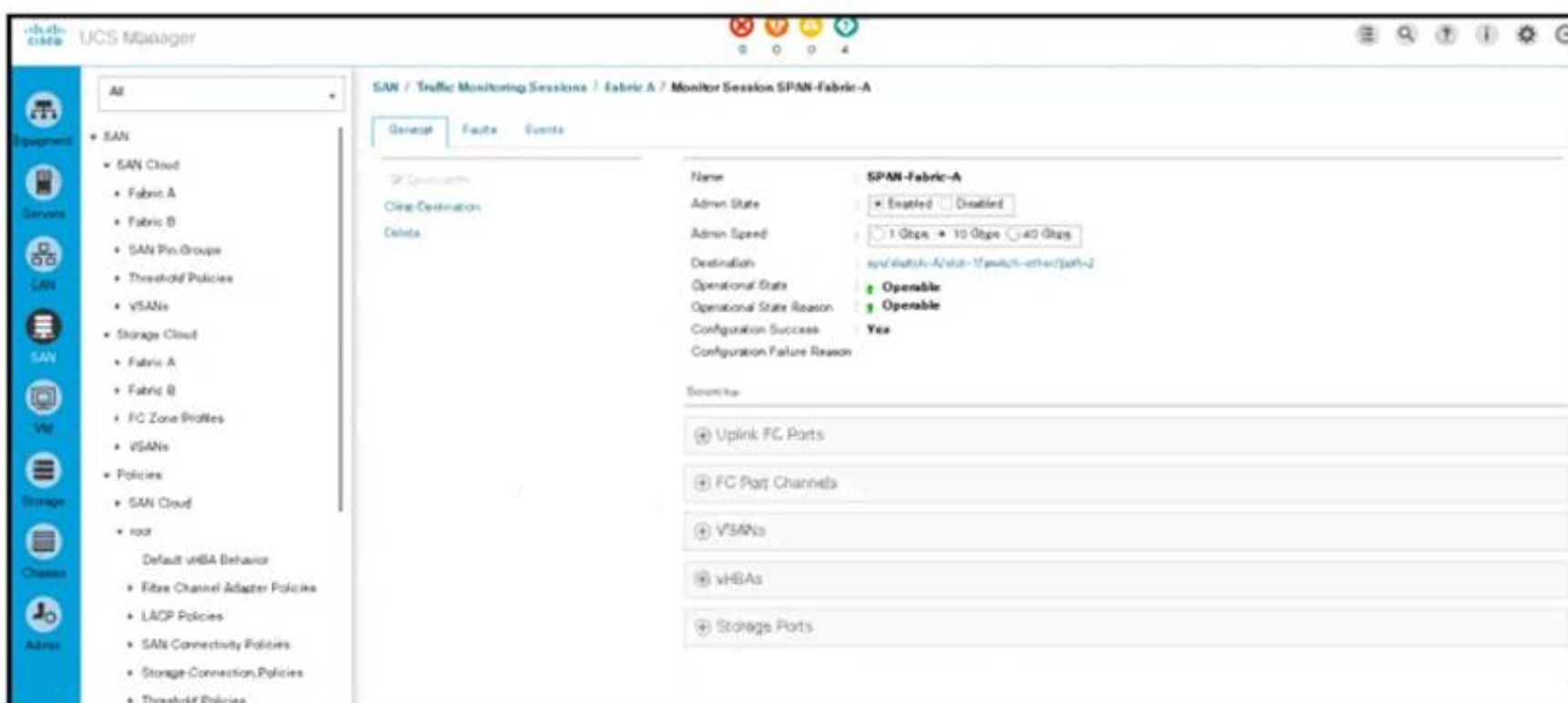
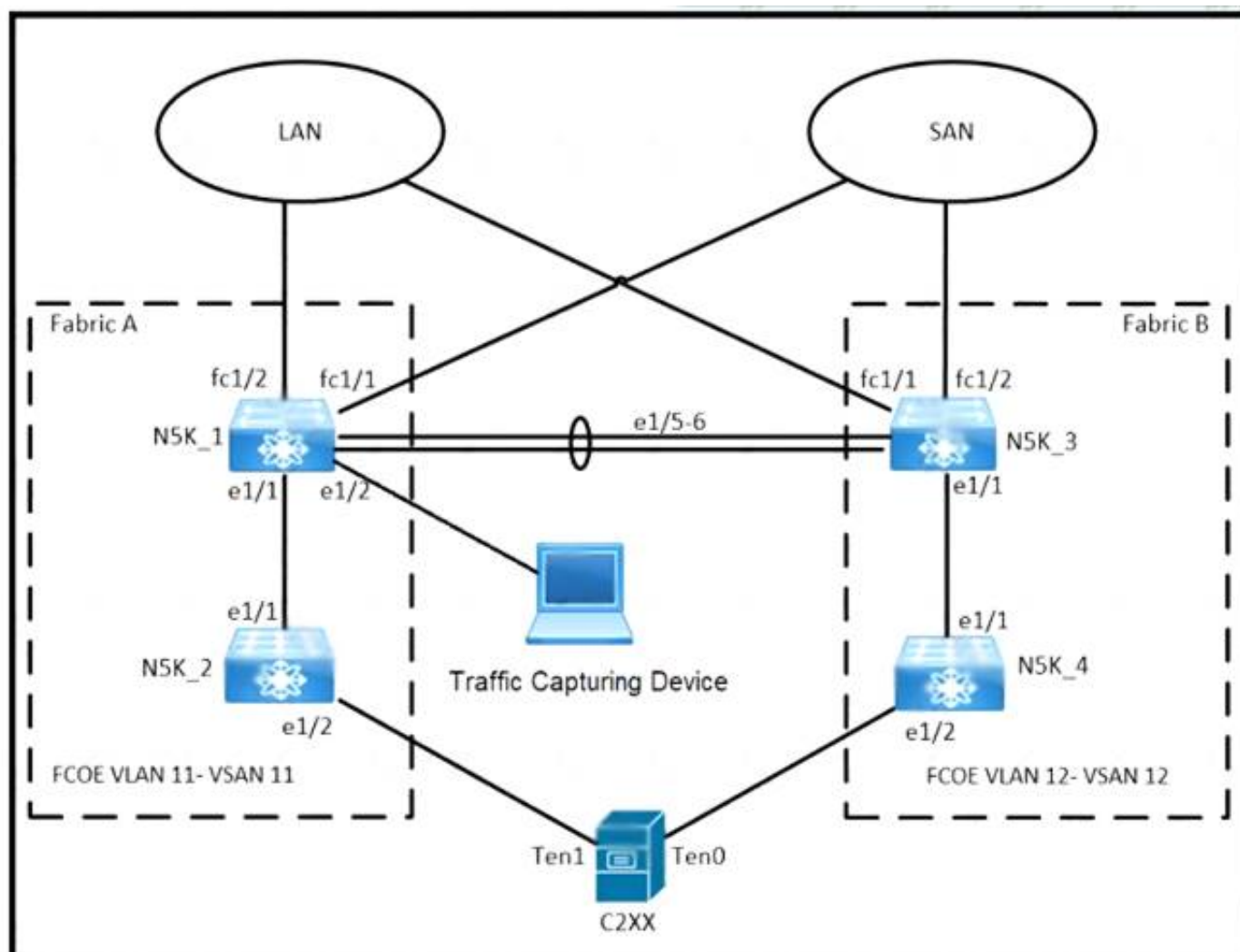
Which component is upgraded by using an EPLD upgrade on a Cisco Nexus 9000 Series Switch?

- A. dual-homed fabric extenders
- B. BIOS
- C. field-programmable gate arrays
- D. ISSU of the NX-OS version

Answer: C

NEW QUESTION 24

Refer to the exhibits



An engineer must implement a SPAN session that sends a copy of all VLAN 11 traffic on N5K_1 to the Traffic Capturing Device. The configuration that is presented is already applied to the Cisco UCS Manager. Which additional action meets the objective'?

- A. Assign the VLAN to the monitored port.
- B. Choose VLAN 11 under the VSANs section.
- C. Select the Clear Destination feature.
- D. Create a LAN traffic monitoring session.

Answer: B

NEW QUESTION 26

Which two authentication types does Cisco UCS Manager support when configuration authentication? (Choose two.)

- A. local
- B. LDAP
- C. 802.1X
- D. Kerberos
- E. PAM

Answer: AB

Explanation:

https://www.cisco.com/c/en/us/td/docs/unified_computing/ucs/ucs-manager/GUI-User-Guides/Admin-Management/3-2/b_Cisco_UCS_Admin_Mgmt_Guide_3_2/b_Cisco_UCS_Admin_Mgmt_Guide_3_2_chapter_0101.html

NEW QUESTION 27

An engineer must implement a disaster recovery policy for the Cisco UCS infrastructure. The solution must meet these criteria:

- The Recovery Point Objective must be 48 hours.
- The backup must use encrypted transmission.
- The Recovery Time Objective must be 4 hours.

Which configuration set must be used in the scheduled backup to meet these requirements?

- ☒ Protocol: SFTP
Schedule: Weekly
- ☐ Protocol: FTP
Schedule: Bi-Weekly
- ☐ Protocol: TFTP
Schedule: Bi-Weekly
- ☐ Protocol: SCP
Schedule: Daily

- A. Option A
- B. Option B
- C. Option C
- D. Option D

Answer: D

NEW QUESTION 30

What happens to the default host firmware policy after a Cisco UCS Manager upgrade?

- A. It is updated to contain the firmware entries of all the components
- B. It is replaced by a new default policy without any firmware entries.
- C. It is assigned to all the service profiles that include a host firmware policy.
- D. It is set to match the host firmware policy.

Answer: B

Explanation:

https://www.cisco.com/c/en/us/td/docs/unified_computing/ucs/ucs-manager/GUI-User-Guides/Firmware-Mgmt/

NEW QUESTION 31

A network administrator attempts to automate the provisioning of several new Cisco Nexus switches. The administrator prepares a bootstrap configuration script for the task. Due to the number of switches, a zero-touch provisioning solution is preferred. Additionally, some switches arrive with outdated software and should be automatically upgraded as part of the provisioning workflow. Which solution meets the requirements?

- A. DHCP
- B. Ansible
- C. NX-API
- D. POAP

Answer: C

NEW QUESTION 32

A network engineer plans to upgrade the firmware of a Cisco UCS B-Series chassis by using the Auto Install feature. Which component is upgraded during the infrastructure firmware upgrade stage?

- A. Cisco IMC
- B. Adapter
- C. I/O module
- D. BIOS

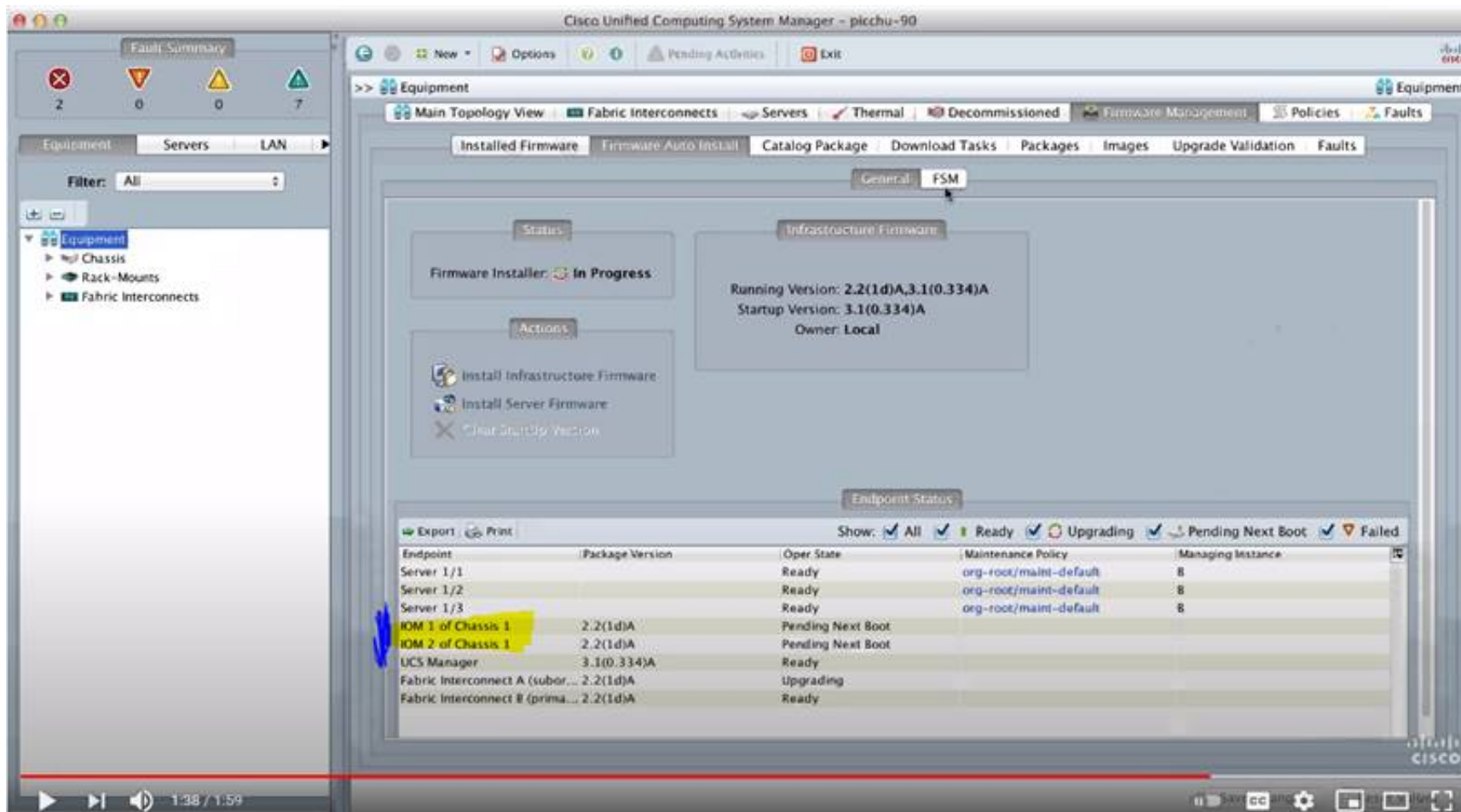
Answer: C

Explanation:

https://www.cisco.com/c/en/us/td/docs/unified_computing/ucs/ucs-manager/GUI-User-Guides/Firmware-Mgmt/ <https://www.youtube.com/watch?v=g-4OgYigvRI>

Direct Upgrade After Auto Install

During Auto Install, the startup version of the default infrastructure pack is configured. To successfully complete a direct upgrade or activation of Cisco UCS Manager, Fabric Interconnects, and IOMs after Auto Install, ensure that the startup version is cleared before starting direct upgrade or activation. If the startup version of the default infrastructure pack is configured, you cannot directly upgrade or activate Cisco UCS Manager, Fabric Interconnects, and IOMs. , provides detailed steps for clearing the startup version.



NEW QUESTION 35

A network engineer needs to configure system logging on the MDS switch. The messages must be displayed with the severity level of "warning" and above. For security reasons the users must be logged out of the console after 5 minutes of inactivity Which configuration must be applied to meet these requirements?

- ☐ MDS-A(config)# logging console 5
MDS-A(config-console)# exec-timeout 300
- ☒ MDS-A(config)# line console
MDS-A(config-console)# speed 38400
MDS-A(config-console)# exec-timeout 5
MDS-A(config)# logging console 4
- ☐ MDS-A(config)# console
MDS-A(config-console)# speed 38400
MDS-A(config-console)# session-limit 5
MDS-A(config)# logging console 5
- ☐ MDS-A(config)# logging line 4
MDS-A(config-console)# session-limit 300

- A. Option A
- B. Option B
- C. Option C
- D. Option D

Answer: B

Explanation:

DETAILED STEPS

	Command or Action	Purpose
Step 1	configure terminal Example: <pre>switch# configure terminal switch(config)#</pre>	Enters global configuration mode.
Step 2	line console Example: <pre>switch# line console switch(config-console)#</pre>	Enters console configuration mode.
Step 3	databits <i>bits</i> Example: <pre>switch(config-console)# databits 7</pre>	Configures the number of data bits per byte. The range is from 5 to 8. The default is 8.
Step 4	exec-timeout <i>minutes</i> Example: <pre>switch(config-console)# exec-timeout 30</pre>	Configures the timeout for an inactive session. The range is from 0 to 525600 minutes (8760 hours). A value of 0 minutes disables the session timeout. The default is 30 minutes.

NEW QUESTION 36

An engineer must configure RBAC in Cisco UCS Manager in an existing data center environment. Which two roles can be used to configure LAN Connectivity policies? (Choose two.)

- A. network-admin
- B. server-profile
- C. admin
- D. enable
- E. operations

Answer: AC

Explanation:

https://www.cisco.com/c/en/us/td/docs/unified_computing/ucs/sw/gui/config/guide/1-4/UCSM_GUI_Configuration_Guide_1_4_chapter9.html

https://www.cisco.com/c/en/us/td/docs/unified_computing/ucs/ucsm_privileges/3-2/UCSM-Privileges-3_2/UCSM-Privileges-3_2_chapter_01.html

NEW QUESTION 37

A customer data center is configured for distribution of user roles, call home, and NTP. The data center was split into two geographically separate locations called DC1 and DC2. The requirement is for the user role configurations to be distributed in DC1 and for NTP and call home features to be constrained to DC2. Which two configuration sets must be used to meet these requirements? (Choose two.)

- A.


```
! On Data Center 1
configure terminal
cfs 1
roles
aaa
```
- B.


```
! On Data Center 1
configure terminal
cfs region 1
ntp
callhome
```
- C.


```
! On Data Center 1
configure terminal
cfs 1
ntp
callhome
```
- D.


```
! On Data Center 2
configure terminal
cfs region 2
roles
```
- E.


```
! On Data Center 2
configure terminal
cfs 2
roles
aaa
```

- A. Option A
- B. Option B
- C. Option C
- D. Option D
- E. Option E

Answer: CD

Explanation:

This example shows how to move the Call Home application to CFS region 2:

```
switch# config t
switch(config)# cfs region 2
switch(config-cfs-region)# callhome
switch(config-cfs-region)# show cfs region name callhome
```

https://www.cisco.com/c/en/us/td/docs/switches/datacenter/sw/4_2/nx-os/system_management/configuration/guide/sm_nx_os_cli/sm_2cfs.html

NEW QUESTION 39

A network engineer must perform a backup and restore of the Cisco Nexus 5000 Series Switch configuration. The backup must be made to an external backup server. The only protocol permitted between the Cisco Nexus switch and the backup server is UDP. The backup must be used when the current working configuration of the switch gets corrupted. Which set of steps must be taken to meet these requirements?

- A. * 1 Perform a startup-config backup to an FTP server.* 2 Copy startup-config in the boot flash to the running-config file
- B. * 1 Perform a running-config backup to an SFTP server* 2 Copy backup-config from the SFTP server to the running-config file
- C. * 1 Perform a running-config backup to an SCP server* 2 Copy running-config in the boot flash to the running-config file
- D. * 1 Perform a startup-config backup to a TFTP server* 2 Copy backup-config from the backup server to the running-config file

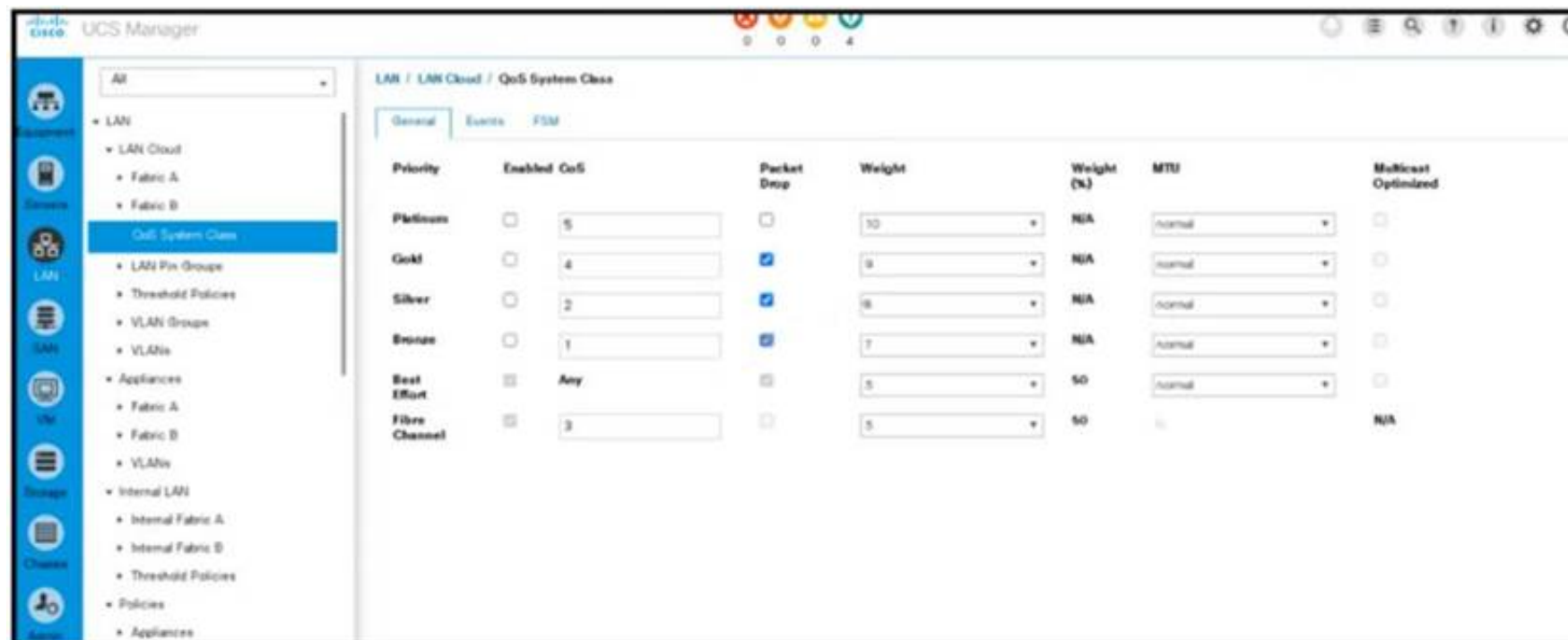
Answer: D

Explanation:

TFTP is the only protocol that uses UDP. FTP, SFTP, and SCP use TCP.

NEW QUESTION 43

Refer to the exhibit.



An engineer must configure a QoS policy that controls only vHBA traffic. Which policy must be used to meet this requirement?

- A. Best Effort
- B. Fibre Channel
- C. Gold
- D. Platinum

Answer: B

NEW QUESTION 48

Which two actions must be taken to directly connect a Fibre Channel storage array to a Cisco UCS domain? (Choose two.)

- A. Configure a new VSAN
- B. Create a new vHBA dedicated to the storage array
- C. Configure a Fibre Channel port channel
- D. Create a Storage Connection Policy
- E. Configure the Fibre Channel poet as a Fibre Channel storage port

Answer: AE

NEW QUESTION 50

A server engineer wants to control power usage on a Cisco UCS C-Series rack server down to the component level. Which two components support specific power limits? (Choose two.)

- A. storage controller
- B. network controller
- C. processor
- D. graphic card
- E. memory

Answer: CE

Explanation:

https://www.cisco.com/c/en/us/td/docs/unified_computing/ucs/c/sw/gui/config/guide/4_1/b_Cisco_UCS_C-serie

NEW QUESTION 54

Refer to the exhibit.

The screenshot shows the 'Monitor Session test-span' configuration page in the Cisco UCS GUI. The 'General' tab is selected. On the left, under 'Actions', there are links for 'Set Destination', 'Clear Destination', and 'Delete'. On the right, under 'Properties', the following details are shown:

- Name: test-span
- Admin State: ☒ Enabled ☐ Disabled
- Destination: sys/switch-A/slot-1/switch-ether/port-17
- Admin Speed: ☐ 1 Gbps ☒ 10 Gbps ☐ 40 Gbps
- Operational State: Down
- Operational State Reason: No Sources Configured
- Configuration Success: Yes
- Configuration Failure Reason:

At the bottom, there is a section for 'Sources'.

An engineer must monitor all LAN traffic on Fabric A from a blade server. Which source should be configured in the test-span monitor session to complete this task?

- A. all vHBAs from the service profile that correspond to this server
- B. all uplink FCoE ports
- C. all uplink Ethernet ports
- D. all vNICs from the service profile that correspond to this server

Answer: D

Explanation:

https://www.cisco.com/en/US/docs/unified_computing/ucs/sw/gui/config/guide/141/UCSM_GUI_Configuration

Guidelines and Recommendations for Traffic Monitoring

When configuring or activating traffic monitoring, consider the following guidelines:

- You can create and store up to 16 traffic monitoring sessions, but only two can be active at the same time.
- A traffic monitoring session is disabled by default when created. To begin monitoring traffic, you must activate the session.
- To monitor traffic from a server, add all vNICs from the service profile corresponding to the server.
- To monitor traffic from a VM, you must first determine the identity of the dynamic vNIC assigned to the VM. Follow the procedure in to find the vNIC and view its identity properties, then add the vNIC as a source for the monitoring session. If you later move the VM using VMotion, a new dynamic vNIC is assigned and you must reconfigure the monitoring source.

Viewing Dynamic vNIC Properties in a VM

- You can monitor Fibre Channel traffic using either a Fibre Channel traffic analyzer or an Ethernet traffic analyzer. When Fibre Channel traffic is monitored using an Ethernet traffic monitoring session, with an Ethernet destination port, the destination traffic will be FCoE.
- Because a traffic monitoring destination is a single physical port, a traffic monitoring session can monitor only a single fabric. To monitor uninterrupted vNIC traffic across a fabric failover, you must create two sessions—one per fabric—and connect two analyzers. Add the vNIC as the traffic source for both sessions.
- All traffic sources must be located within the same switch as the destination port.
- A port configured as a destination port cannot also be configured as a source port.
- A member port of a port channel cannot be configured individually as a source. If the port channel is configured as a source, all member ports are source ports.

NEW QUESTION 56

What is a benefit of Cisco HyperFlex All-Flash Stretched cluster deployment as compared to All-HDD Stretched cluster deployment?

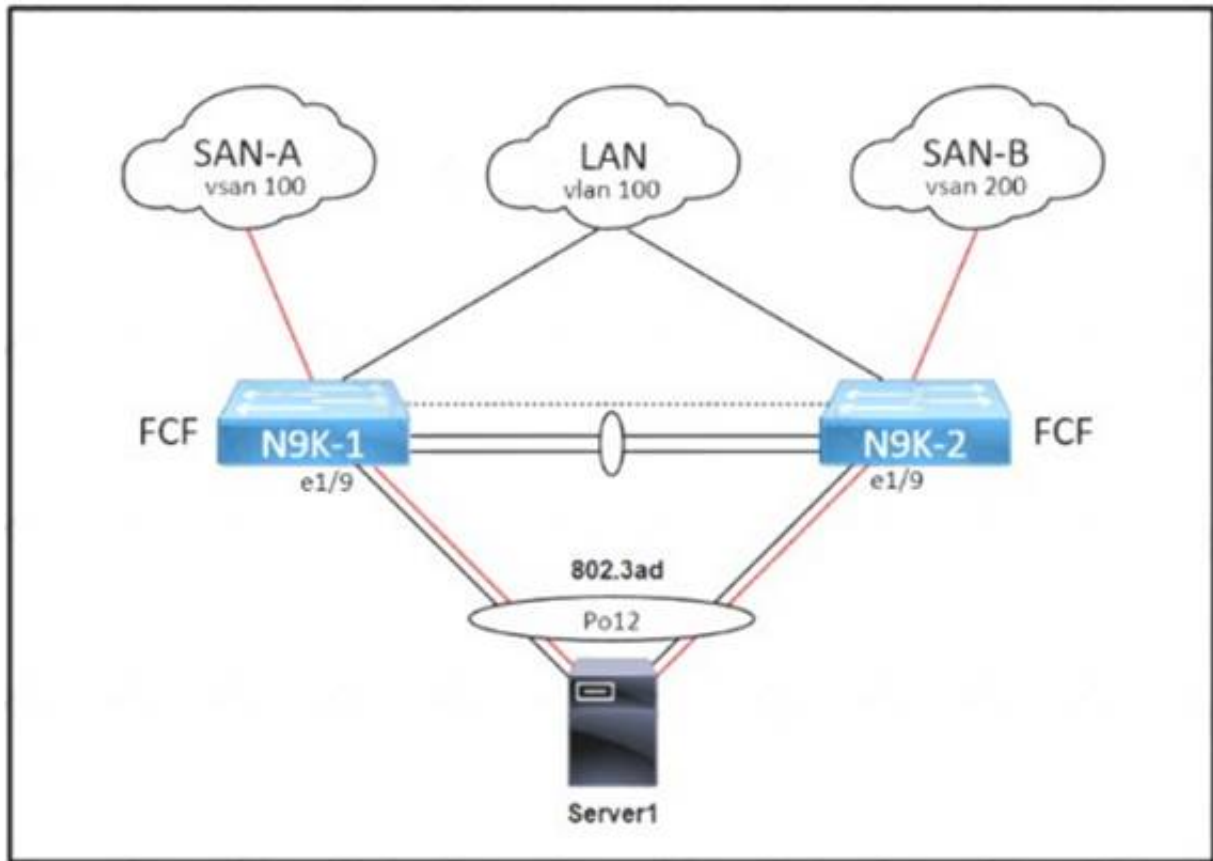
- A. lower cost

- B. lower number of IOPS
- C. higher cost
- D. higher number of IOPS

Answer: D

NEW QUESTION 61

Refer to the exhibit.



An administrator must complete the unified fabric configuration between Server1 and a pair of Cisco Nexus 9000 Series Switches Drag and drop the code snippets from the right onto the blanks in the code on the left to complete the N9K-1 configuration Snippets are used more than once.

```
service-policy type qos input default-fcoe-in-policy
int [ ]
  switchport trunk allowed [ ] 1, 100
int [ ]
  bind interface [ ]
  no shut [ ]
```

vlan

vfc 1

po12

- A. Mastered
- B. Not Mastered

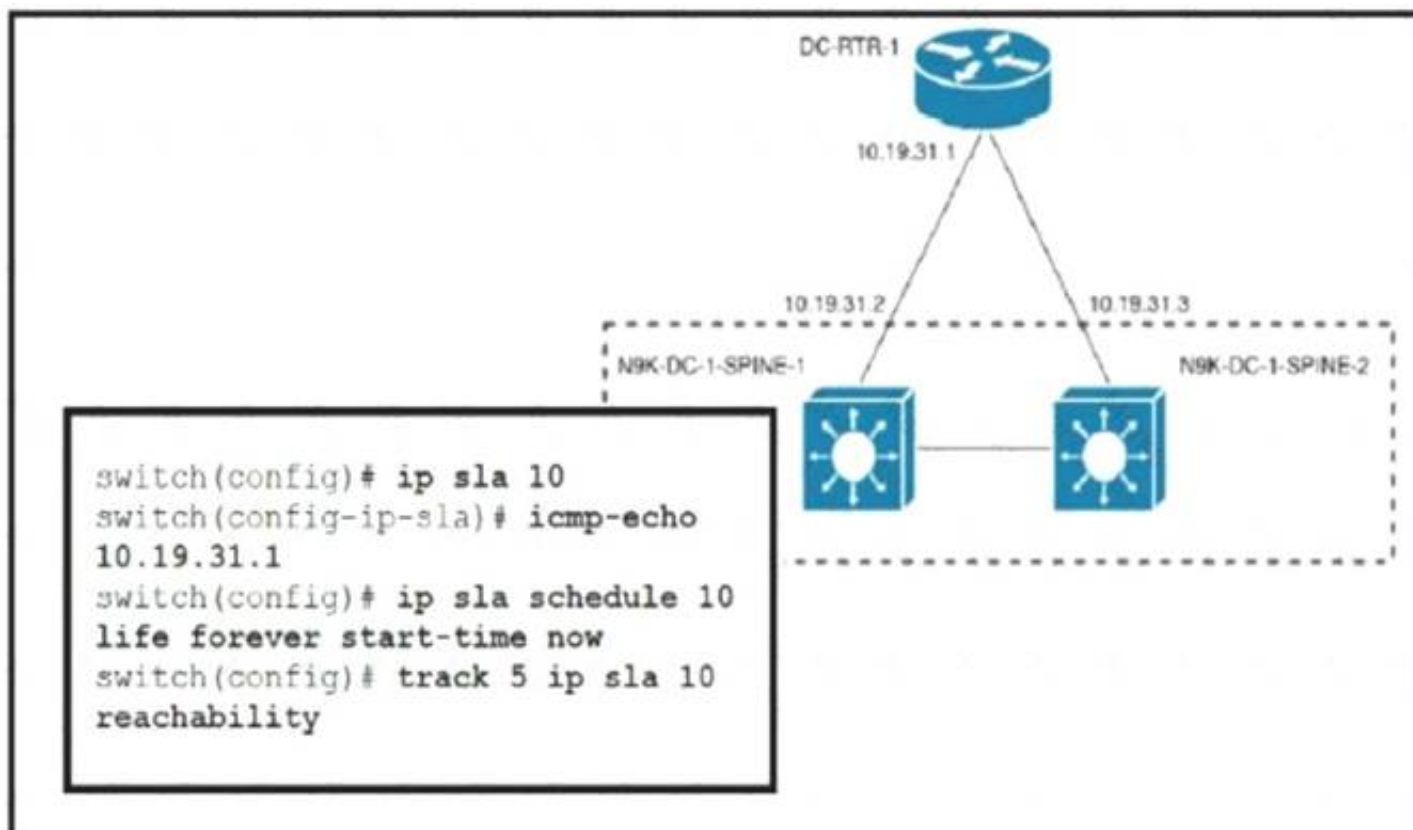
Answer: A

Explanation:

Po12
Vlan Vfc1 Po12

NEW QUESTION 62

Refer to the exhibit.



An engineer must invoke a Python script that alerts the operations team when the router DC-RTR-1 becomes unreachable. Which configuration set accomplishes this task?

- ☒ track 3 ip sla 10 reachability
event name GATEWAY-DOWN
event state down
action cli command routerdown.py
- ☐ scheduler job name ROUTER-DOWN
job track 9 state down
action 1.0 cli source routerdown.py
schedule 10
- ☐ event scheduler name DOWN-ROUTER
event track 2 state 1 not up
event action 1.0 command source routerdown.py
event start 0:00 repeat 0:05
- ☐ event manager applet ROUTER-DOWN-SLA
event track 5 state down
action 1.0 event-default
action 2.0 cli command source routerdown.py

- A. Option A
- B. Option B
- C. Option C
- D. Option D

Answer: D

NEW QUESTION 63

In an FCoE environment, for which two sets of data must an interface that implements the PAUSE mechanism always provision sufficient ingress buffer? (Choose two)

- A. frames that were sent with high credit
- B. frames that were processed and transmitted by the transmitter before the PAUSE frame left the sender
- C. frames that were sent on the link but not yet received.
- D. frames that were sent on the link and received.
- E. frames that were processed and transmitted by the transmitter after the PAUSE frame left the sender.

Answer: BC

Explanation:

https://www.cisco.com/c/en/us/td/docs/switches/datacenter/nexus7000/sw/fcoe/config/cisco_nexus7000_fcoe_config_guide_8x/configuring_fcoe.html

NEW QUESTION 65

An engineer upgrades the bash on the Cisco Nexus 9000 Series Switch.

```

guestshell:~$ sudo [MISSING_COMMAND] /bootflash/bash-4.2_8642092948678a-r8x86_64.rpm.rpm
Preparing...
##### [100%]
1: bash ##### [100%]
update-alternatives: Linking //bin/sh to /bin/bash
    
```

Which command must be used to complete the task?

- A. rpm -qa
- B. rpm -Uhv
- C. upgrade -U
- D. update -vh

Answer: B

NEW QUESTION 67

An engineer needs to install a new package on a Cisco Nexus 9000 Series Switch. What is the impact of running the install commit <filename> command on the switch?

- A. The switch is restarted after the upgrade is complete
- B. The package is used after the switch is restarted.
- C. The previous package that was in use is deleted from bootflash.
- D. The package is used in the running configuration.

Answer: B

NEW QUESTION 70

Refer to the exhibit.

```
Enter the configuration method. (console/gui) ? console

Enter the setup mode; setup newly or restore from backup.
(setup/restore) ? restore

NOTE:
  To configure Fabric interconnect using a backup file on
a remote server, you will need to setup management
interface.
  The management interface will be re-configured (if
necessary), based on information stored in the backup file.

Continue to restore this Fabric interconnect from a backup
file (yes/no) ? yes

Physical Switch Mgmt0 IPv4 address : 192.168.10.10
Physical Switch Mgmt0 IPv4 netmask : 255.255.255.0
IPv4 address of the default gateway : 192.168.10.1
Enter the protocol to get backup file (scp/ftp/tftp/sftp)
? scp
Enter the IP address of backup server: 20.10.20.10
Enter fully qualified backup file name: Backup.bak
Enter user ID: user
Enter password:
  Retrieved backup configuration file.
Configuration file - Ok
```

Which type of backup is required to restore a Cisco UCS configuration?

- A. system configuration
- B. all configuration
- C. logical configuration
- D. full state

Answer: A

Explanation:

https://www.cisco.com/c/en/us/td/docs/unified_computing/ucs/sw/cli/config/guide/1-0-2/b_CLI_Config_Guide_

The following example restores a system configuration from the Backup.bak file, which was retrieved from the 20.10.20.10 backup server using FTP:

```
Enter the configuration method. (console/gui) ? console

Enter the setup mode; setup newly or restore from backup. (setup/restore) ? restore

NOTE:
  To configure Fabric interconnect using a backup file on a remote server,
  you will need to setup management interface.
  The management interface will be re-configured (if necessary),
  based on information stored in the backup file.

Continue to restore this Fabric interconnect from a backup file (yes/no) ? yes

Physical Switch Mgmt0 IPv4 address : 192.168.10.10

Physical Switch Mgmt0 IPv4 netmask : 255.255.255.0

IPv4 address of the default gateway : 192.168.10.1

Enter the protocol to get backup file (scp/ftp/tftp/sftp) ? scp
Enter the IP address of backup server: 20.10.20.10
Enter fully qualified backup file name: Backup.bak
Enter user ID: user
Enter password:
Retrieved backup configuration file.
Configuration file - Ok

Cisco UCS 6100 Series Fabric Interconnect
UCS-A login:
```

NEW QUESTION 71

A network engineer must enable port security on all cisco MDS series switches in the fabric. The requirement is to avoid the extensive manual configuration of the switch ports. Which action must be taken to meet these requirements?

- A. Activate CFS distribution and the auto-learning port security feature.
- B. Activate CFS distribution and file auto-learning port security feature on a per-VSAN basis.
- C. Enable the auto-learning port security feature on a per-VSAN basis.
- D. Enable the auto-learning port security feature.

Answer: B

Explanation:

You can instruct the switch to automatically learn (auto-learn) the port security configurations over a specified period. This feature allows any switch in the Cisco MDS 9000 Family to automatically learn about devices and switches that connect to it. Use this feature when you activate the port security feature for the first time as it saves tedious manual configuration for each port. You must configure auto-learning on a per-VSAN basis.
https://www.cisco.com/en/US/docs/storage/san_switches/mds9000/sw/rel_3_x/configuration/guides/fm_3_3_1/p

NEW QUESTION 72

What occurs when running the command install deactivate <filename> while a software maintenance upgrade is performed on a Cisco Nexus 9000 Series switch?

- A. The current set of packages is committed.
- B. The package is removed from the switch.
- C. The package features for the line card are disabled.
- D. The current upgrade stops.

Answer: C

NEW QUESTION 76

Which virtual MAC address is the default for HSRP version 2 group 10?

- A. 0000.5E00.0110
- B. 0000.0C9F.F00A
- C. 3716.1350.1C0A
- D. 0000.0C9F.F010

Answer: B

Explanation:

https://www.cisco.com/c/en/us/td/docs/ios-xml/ios/ipapp_fhrp/configuration/xr-3s/fhrp-xe-3s-book/fhrp-hsrp-v2.h

NEW QUESTION 79

An engineer deploys a new Cisco Nexus 5000 Series Switch in an existing environment with strict security policies. The new device should meet these requirements:

- Secure end-user ports with minimum configuration effort.
- Log security breaches and require manual recovery.
- Retain the switch configuration if the device restarts.

Which configuration must be used?

- A.
`switchport port-security`
`switchport port-security max 1`
`switchport port-security violation shutdown`
- B.
`switchport port-security`
`switchport port-security violation shutdown`
`switchport port-security mac-address dynamic`
- C.
`switchport port-security`
`switchport port-security max 1`
`switchport port-security mac-address sticky`
- D.
`switchport port-security`
`switchport port-security violation restrict`
`switchport port-security mac-address sticky`

Answer: C

NEW QUESTION 81

Drag and drop the network assurance concepts from the left onto the corresponding benefits on the right.

Cisco Tetration	allows close to real-time data monitoring
Data Management Engine	confirms that the network operates consistently with business requirements
Cisco Network Assurance Engine	offers overall protection and enables analysis of the network in real time to identify security incidents faster
Streaming Telemetry	allows the characteristics to be presented as object properties

- A. Mastered
 B. Not Mastered

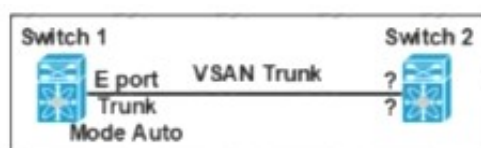
Answer: A

Explanation:

Diagram Description automatically generated

NEW QUESTION 85

Refer to the exhibit.



Which feature must be used to configure on switch 2 to establish a VSAN trunk between switch 1 and switch 2?

- A. F portTrunk Mode Passive
 B. E PortTrunk Mode On
 C. N PortTrunk Mode Active
 D. NP PortTrunk Mode Auto

Answer: B

NEW QUESTION 87

A network engineer configures a converged network adapter (CNA) and must associate a virtual fiber Channel 7 interface to VSAN 7. The CNA connected to the interface Eth1/7, and VLAN 700 is mapped to the VSNA. Which configuration must be applied to create the virtual Fiber Channel interface and associate it with the Ethernet physical interface?

A)

```
switch(config)# vlan 700
switch(config-vlan)# fcoe vsan 7
```

B)

```
switch(config)# vsan database
switch(config-vsan)# vsan 7 interface vfc 7
```

C)

```
switch(config)# interface ethernet 1/7
switch(config-if)# vfc 7 attach vlan 1,700
```

D)

```
switch(config)# interface vfc 7
switch(config-if)# bind interface ethernet 1/7
```

- A. Option A
- B. Option B
- C. Option C
- D. Option D

Answer: D

NEW QUESTION 92

An engineer must configure a named VSAN when the fabric interconnect is in Fibre Channel switch mode The VSAN must meet these requirements:

- Named VSAN must be called "VSAN 10".
- VSAN ID must be 10.
- FCoE ID must be 20.
- VSAN 10 must be attached to port 2 in slot 1.

Which command set configures a VSAN when the fabric interconnect is in Fibre Channel switch mode?

- ☒ UCS-A# scope fc-storage
 UCS-A/fc-storage# create vsan VSAN10 10 20
 UCS-A /fc-storage/vsan # create member-port fcoe a 1 2
 UCS-A /fc-storage/vsan/member-port* # commit-buffer
- ☐ UCS-A# scope fc-traffic-mon
 UCS-A/fc-storage# create vsan VSAN10 20 10
 UCS-A /fc-storage/vsan # create member-port fcoe a 2 1
 UCS-A /fc-storage/vsan/member-port* # commit-buffer
- ☐ UCS-A# scope eth-storage
 UCS-A/fc-storage# create vsan VSAN10 10 20
 UCS-A /fc-storage/vsan # create member-port fcoe a 2 1
 UCS-A /fc-storage/vsan/member-port* # commit-buffer
- ☐ UCS-A# scope fc-uplink
 UCS-A/fc-storage# create vsan VSAN10 20 10
 UCS-A /fc-storage/vsan # create member-port fcoe a 1 2
 UCS-A /fc-storage/vsan/member-port* # commit-buffer

- A. Option A
- B. Option B
- C. Option C
- D. Option D

Answer: A

NEW QUESTION 96

An engineer must configure SAN connectivity in Cisco UCS manager. The requirement is to specify the WWPN of the storage array and set the zoning type to single initiator multiple targets. The engineer must also configure interrupt handling and queues of the vHBA interface. Which two Cisco UCS policies should be used to configure the settings? (Choose two.)

- A. storage connection policy
- B. SAN connectivity policy
- C. vHBA policy
- D. Fibre Channel adaptor policy
- E. boot policy

Answer: AD

NEW QUESTION 100

A cisco Nexus 9000 series switch experiences a startup configuration corruption. The engineer must implement a procedure to recover configuration file from the switch. Which command set must be used?

- A. * 1. Copy the running-configuration to the startup configuration.* 2. Clear the current configuration of the switch.* 3. Restart the device.* 4. Copy a previously saved configuration file to the running configuration.
- B. * 1. Clear the current configuration of the switch* 2. Restart the device.* 3. Copy the running configuration to the startup configuration* 4. Copy a previously saved configuration file to the running configuration
- C. * 1. Clear the current configuration of the switch* 2. Restart the device.* 3. Copy a previously saved configuration file to the running-configuration* 4. Copy the running-configuration to the startup configuration.
- D. * 1.Restarting device.* 2. Copy the running-configuration file to a remote server.* 3. Clear the current configuration of the switch.* 4. Copy the running configuration to the startup configuration

Answer: C

Explanation:

Problems, such as memory corruption, can occur that make it necessary for you to recover your configuration from a backed-up version.

Each time that you enter a copy running-config startup-config command, a binary file is created and the ASCII file is updated. A valid binary configuration file reduces the overall boot time significantly. A binary file cannot be uploaded, but its contents can be used to overwrite the existing startup configuration. The write erase command clears the binary file.

SUMMARY STEPS

- * 1. write erase
- * 2. reload
- * 3. copy configuration-file running-configuration
- * 4. copy running-config startup-config <https://www.cisco.com/c/en/us/td/docs/switches/datacenter/nexus9000/sw/93x/fundamentals/configuration/guide>

NEW QUESTION 103

An engineer must perform a backup operation of the Cisco UCS system. The backup must be transferred to a secure location using UDP and must contain information about VLANs, VSANs, and other policies. Also, the operations team requires the backup file to be in a human-readable format. Which configuration set meets these requirements?

- A. Type: System configuration Protocol: SCP
- B. Type: Logical configuration Protocol: TFTP
- C. Type: All configuration Protocol: FTP
- D. Type: Full state Protocol: SFTP

Answer: B

NEW QUESTION 104

A network engineer must prevent data corruption due to cross fabric communication in an FCoE environment. Which configuration must be applied to the Cisco Nexus Unified Switches to achieve this objective?

- A. Switch(config)#fcoe fcmmap 0e,fc,2a
- B. Switch(config-if)# no fcoe fcf-priority 0
- C. Switch(config-if) # shutdown lan
- D. Switch(config) # no fcoe fcf-priority

Answer: A

Explanation:

2. switch(config)# fcoe fcmmap fabric-map
3. (Optional) switch(config)# no fcoe fcmmap fabric-map

DETAILED STEPS

	Command or Action	Purpose
Step 1	switch# configure terminal	Enters configuration mode.
Step 2	switch(config)# fcoe fcmmap fabric-map	Configures the global FC-Map. The default value is 0E.FC.00. The range is from 0E.FC.00 to 0E.FC.FF.
Step 3	switch(config)# no fcoe fcmmap fabric-map	(Optional) Resets the global FC-Map to the default value of 0E.FC.00.

This example shows how to configure the global FC-Map:

```
switch# configure terminal
```

```
switch(config)# fcoe fcmmap 0e.fc.2a
```

https://www.cisco.com/c/en/us/td/docs/switches/datacenter/nexus5000/sw/fcoe/b_Cisco_Nexus_5000_Series_NX-OS_Fibre_Channel_over_Ethernet_Configuration_Guide/Cisco_Nexus_5000_Series_NX-OS_Fibre_Channel_over_Ethernet_Configuration_Guide_chapter3.html
 You can prevent data corruption due to cross-fabric talk by configuring an FC-Map that identifies the Fibre Channel fabric for this Cisco Nexus device. When the FC-Map is configured, the switch discards the MAC addresses that are not part of the current fabric.
 switch(config)# fcoe fcmmap fabric-map Configures the global FC-Map. The default value is 0E.FC.00. The range is from 0E.FC.00 to 0E.FC.FF.
https://www.cisco.com/c/en/us/td/docs/switches/datacenter/nexus5000/sw/fcoe/513_n1_1/b_Cisco_n5k_fcoe_co

NEW QUESTION 109

An engineer needs to connect Cisco UCS Manager to an external storage array. Due to budget limitations, the engineer must connect a Cisco UCS manager directly to an FC storage port. Which two actions must be taken to complete this connection? (Choose two)

- A. Configure the fabric interconnect in FC switch mode
- B. Create a storage connection policy
- C. Set FC zoning to disabled when creating the VSAN
- D. Configure the fabric interconnect in end host mode
- E. Create the required VSAN in the SAN cloud

Answer: AC

NEW QUESTION 110

Which two statements describe the process of upgrading an EPLD on a Cisco MUS 9000 Series Switch? (Choose two)

- A. EPLDs are capable to be upgraded without replacing the hardware
- B. The CPLDs for all the modules on a switch must be upgraded at the same time
- C. An upgrade verification identifies the impact of each EPLD upgrade
- D. EPLDs are only capable to be upgraded to the latest F
- E. D image
- F. EPLD upgrades are capable to be completed without powering down the module during the upgrade

Answer: AC

NEW QUESTION 113

When a strict CoPP policy is implemented, which statement describes an event during which packets are dropped?

- A. Fifteen SSH sessions remain connected to the switch.
- B. A large system image is copied to a switch by using the default VRF.
- C. A ping sweep is performed on a network that is connected through a switch.
- D. A web server that is connected to a switch is affected by a DDoS attack.

Answer: B

Explanation:

A large image upload is more probable to generate that level of traffic.

15 SSH session would mean an average of 200pps per session, and they simply mention that the session remain connected, if there are no inputs in them they have 0pps and even a full config push would probably not require 200 packets total.

```
class copp-system-p-class-management set cos 2
```

```
police cir 3000 pps bc 32 packets conform transmit violate drop
```

https://www.cisco.com/c/en/us/td/docs/switches/datacenter/nexus9000/sw/6-x/security/configuration/guide/b_Cisco_Nexus_9000_Series_NX-OS_Security_Configuration_Guide/b_Cisco_Nexus_9000_Series_NXOS_Security_Configuration_Guide_chapter_010001.html

NEW QUESTION 116

An engineer must implement an automation solution to allow the backup of the configuration of cisco Nexus series switches to a centralized location. The solution must:

- * Support the team-developed custom monitoring scripts that are packaged using RPM packaging that the framework must support.
- * Be developed from the underlying cisco Nexus operating system.
- * Have no impact on the operating system of the underlying switch if the resource contention occurs.

* Use Python to expand the existing automation framework. Which solution meets these requirements?

- A. Guest Shell
- B. Bash Shell
- C. TCL Shell
- D. Vegas Shell

Answer: A

NEW QUESTION 121

Refer to the exhibit.

Which two Cisco UCS components are upgraded as a result of the configuration? (Choose two.)

- A. adapters
- B. board controller
- C. IOMs
- D. BIOS
- E. Cisco UCS Manager

Answer: CE

Explanation:

https://www.cisco.com/c/en/us/td/docs/unified_computing/ucs/sw/firmware-mgmt/gui/2-2/b_GUI_Firmware_Management_22/b_GUI_Firmware_Management_22_chapter_0101.html

Infrastructure software bundle—This bundle is also called the A bundle. It contains the firmware images that the fabric interconnects, IO Modules, and Cisco UCS Manager require to function.

Board controller is a server component included in the server bundle not the infrastructure bundle Graphical user interface, text, application, letter Description automatically generated

Install Infrastructure Firmware

Install Infrastructure Firmware upgrades all infrastructure components in a Cisco UCS domain, including Cisco UCS Manager, and all fabric interconnects and I/O modules. All components are upgraded to the firmware version included in the selected Cisco UCS Infrastructure Software Bundle.

Install Infrastructure Firmware does not support a partial upgrade to only some infrastructure components in a Cisco UCS domain domain.

You can schedule an infrastructure upgrade for a specific time to accommodate a maintenance window. However, if an infrastructure upgrade is already in progress, you cannot schedule another infrastructure upgrade. You must wait until the current upgrade is complete before scheduling the next one.



Note

You can cancel an infrastructure firmware upgrade if it is scheduled to occur at a future time. However, you cannot cancel an infrastructure firmware upgrade after the upgrade has begun.

NEW QUESTION 126

Which two firmware packages are included in the Cisco UCS C-Series Rack-Mount UCS-Managed Server Software bundle? (Choose two.)

- A. system
- B. third-party
- C. PSU
- D. CIMC
- E. BIOS

Answer: DE

Explanation:

https://www.cisco.com/c/en/us/td/docs/unified_computing/ucs/ucs-manager/GUI-User-Guides/Firmware-Mgmt/

Cisco UCS C-Series Rack-Mount UCS-Managed Server Software Bundle

This bundle includes the following firmware images that are required to update components on rack-mount servers that have been integrated with and are managed by Cisco UCS Manager:

- CIMC firmware
- BIOS firmware
- Adapter firmware
- Storage controller firmware

NEW QUESTION 127

A network engineer is configuring the Cisco UCS service profile template with Ansible using this code.

```
hostname: 192.168.10.23
username: cisco
password: f718c4329405088301f6247ff982
name: DCE-CTRL
template_type: updating-template
uuid_pool: UUID-POOL
storage_profile: DCE-StgProf
maintenance_policy: default
server_pool: Container-Pool
host_firmware_package: 4.1(1a)
bios_policy: Docker
```

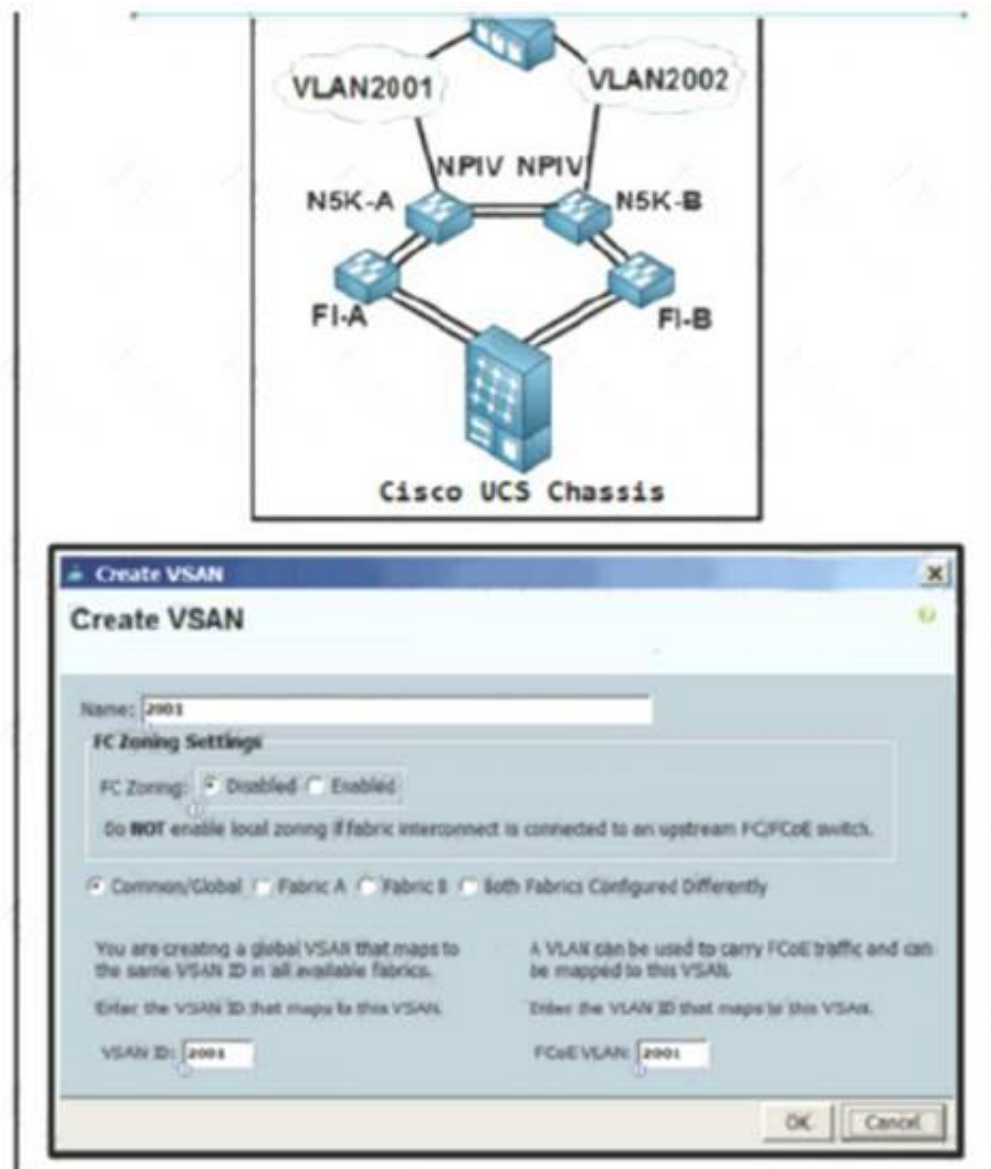
Which attribute must be used to apply the iSCSI initiator identifiers to all iSCSI vNICs for the service profiles derived from the service template?

- A. san_connectivity_policy
- B. iqn_pool
- C. boot_policy
- D. lan_connectivrtty_policy

Answer: B

NEW QUESTION 131

Refer to the exhibit.



An engineer is configuring a VSAN on the network Which option must be selected to create the VSAN?

- A. Fabric B

- B. FC Zoning Enabled
- C. Fabric A
- D. Common/Global

Answer: C

Explanation:

<https://www.cisco.com/c/en/us/td/docs/switches/datacenter/mds9000/sw/nx-os/configuration/guides/fabric/fabric>
https://www.cisco.com/c/en/us/td/docs/unified_computing/ucs/ucs-central/GUI-User-Guides/Storage-Mgmt/1-5/

NEW QUESTION 133

Due to a major version change, an engineer must perform a software upgrade on a Cisco Nexus Series switch. Which two technologies can be implemented to reduce disruptions to the network during the upgrade? (Choose two.)

- A. MLAG
- B. HSRP
- C. PAgP
- D. VDC
- E. vPC

Answer: BE

NEW QUESTION 136

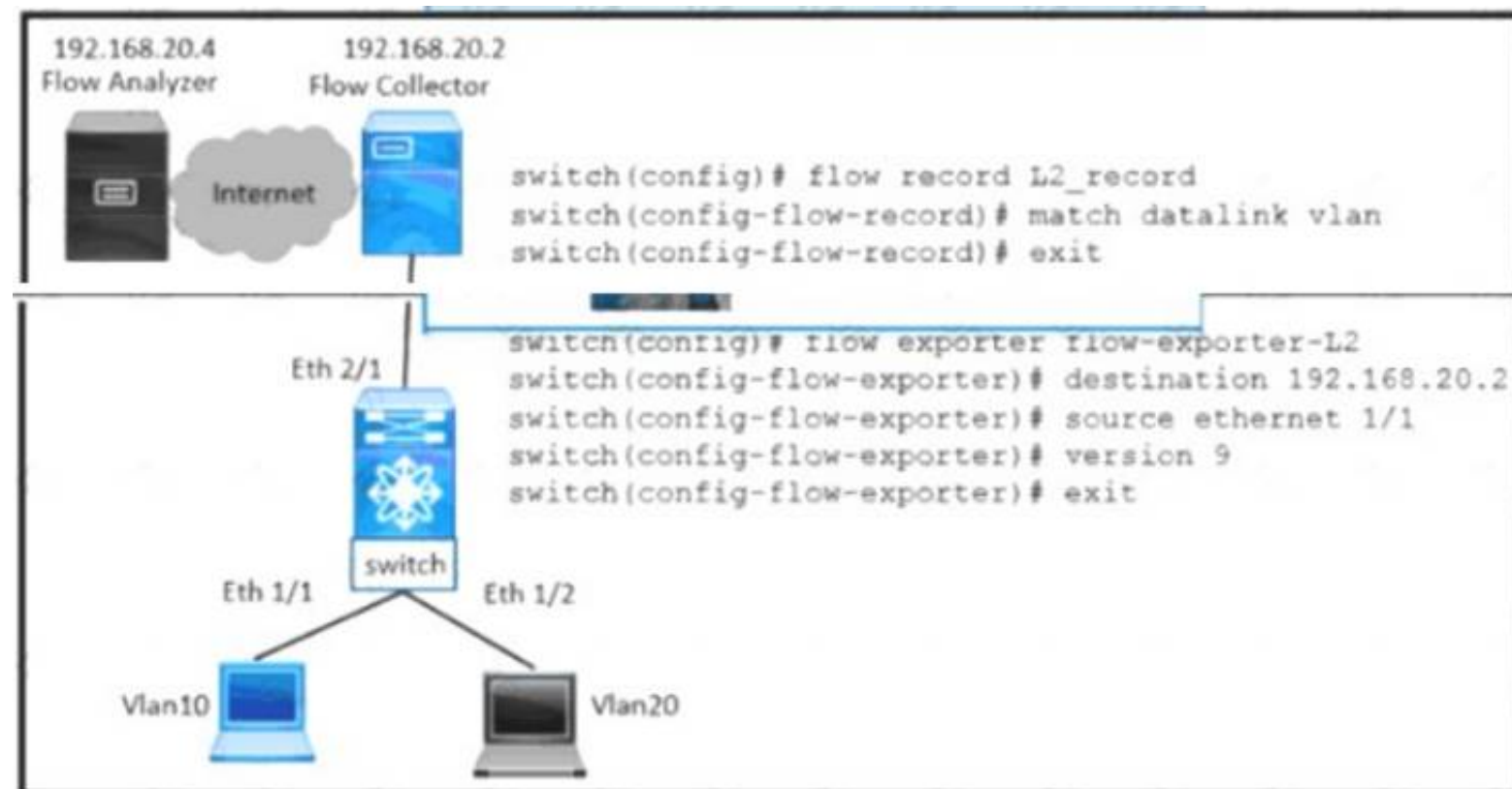
An engineer must configure Cisco Nexus 9000 Series Switches for Cisco UCS Director integration. The configuration must enable automated onboarding of the switches as they come online. For security purposes, the switches must have the bare minimum of connection methods enabled. The connection protocol must allow authentication through credentials. Which protocol must be configured on the switches to allow automated onboarding?

- A. SNMP
- B. Telnet
- C. SSH
- D. HTTPS

Answer: C

NEW QUESTION 138

Refer to the exhibit.



VLAN 10 is experiencing delays and packet drops when the traffic is forwarded through the switch. The destination flow analyzer accepts traffic captures of not more than 30 seconds. Which configuration implements the traffic capture that meets the requirements?


```

switch(config)# flow timeout 30000
switch(config)# interface ethernet 1/1
switch(config-if)# switchport
switch(config-if)# switchport access vlan 10
switch(config-if)# ip flow monitor L2_monitor output

switch(config)# flow timeout 30
switch(config)# interface ethernet 1/1
switch(config-if)# switchport
switch(config-if)# switchport access vlan 10
switch(config-if)# mac packet-classify
switch(config-if)# layer2-switched flow monitor L2_monitor input

switch(config)# interface ethernet 1/1
switch(config-if)# flow timeout 30
switch(config-if)# switchport access vlan 10
switch(config-if)# mac packet-classify
switch(config-if)# ip flow monitor L2_monitor input

switch(config)# interface ethernet 1/1
switch(config)# flow timeout 30000
switch(config-if)# switchport
switch(config-if)# layer2-switched flow monitor L2_monitor output
switch(config-if)# switchport access vlan 10

```

- A. Option A
- B. Option B
- C. Option C
- D. Option D

Answer: B

Explanation:

https://www.cisco.com/c/en/us/td/docs/switches/datacenter/nexus9000/sw/7-x/system_management/configuration/guide/switches/7-x-switches-datacenter-nexus9000-sw-7-x-system-management-configuration-guide.html
https://www.cisco.com/c/en/us/td/docs/switches/datacenter/sw/4_2/nx-os/system_management/configuration/guide/switches/4_2-nx-os-system-management-configuration-guide.html

NEW QUESTION 140

A network administrator is using the Cisco ESA with Cisco AMP to upload files to the cloud for analysis. The network is congested and is affecting communication. How will the Cisco ESA handle any files which need analysis?

- A. Cisco AMP calculates the SHA-256 fingerprint, caches it, and periodically attempts the upload.
- B. The Cisco ESA immediately makes another attempt to upload the file.
- C. The file is queued for upload when connectivity is restored.
- D. The file upload is abandoned.

Answer: A

NEW QUESTION 142

An engineer is implementing traffic monitoring for a server vNIC that is configured with fabric failover enabled. The requirement is for the traffic to be sent to an analyzer, even during a failure of one of the fabric interconnects. The analyzer is connected to unconfigured Ethernet ports on both fabric interconnects. Which configuration accomplishes this task?

- A. Create two traffic monitoring sessions with different names, one per fabric. Connect the analyzer connected to FI-B as the destination for both monitoring sessions.
- B. Create two traffic monitoring sessions with the same name, one per fabric. Connect an analyzer on each FI as the destination for the monitoring session local to that FI.
- C. Create two traffic monitoring sessions with the same name, one per fabric. Connect the analyzer connected to FI-A as the destination for both monitoring sessions.
- D. Create two traffic monitoring sessions with different names, one per fabric. Connect an analyzer on each FI as the destination for the monitoring session local to the FI.

Answer: A

NEW QUESTION 143

An engineer must create a scheduler configuration to create two backup jobs per day. The backup file must be copied to a server in the operations VRF. Which configuration accomplishes this task?

- A)

```

scheduler schedule name CNFGBACKUP
  job name BACKUP-JOB
  copy running-config tftp://10.19.11.12/${SWITCHNAME}-${TIMESTAMP}.cfg vrf operations
  time start now repeat 12:00

```
- B)

```
scheduler schedule name CNFGBACKUP
job name BACKUP-JOB
show tech-support | redirect vrf operations tftp:/10.19.11.12/$(SWITCHNAME)-$(TIMESTAMP).cfg
time start daily 12:30 0:30
```

C)

```
scheduler schedule name CNFGBACKUP
job name BACKUP-JOB
copy startup-config tftp:/10.19.11.12/$(SWITCHNAME)-$(TIMESTAMP).cfg
time daily 12:30 0:30
```

D)

```
scheduler schedule name CNFGBACKUP
job name BACKUP-JOB
copy vrf operations config tftp:/10.19.11.12/$(SWITCHNAME)-$(TIMESTAMP).cfg
time start 12:30 repeat 12
```

- A. Option A
- B. Option B
- C. Option C
- D. Option D

Answer: A

NEW QUESTION 147

Which statement describes monitoring Fibre Channel traffic on a Cisco UCS 6332 Fabric Interconnect?

- A. Fibre Channel traffic is monitored only on one vHBA per server.
- B. The destination port for monitoring must be an unassigned Fibre Channel port.
- C. The monitoring of Fibre Channel traffic is limited to the default VSAN.
- D. Fibre Channel traffic is capable to be monitored as it is encapsulated as FCoE.

Answer: D

Explanation:

You can monitor Fibre Channel traffic using either a Fibre Channel traffic analyzer or an Ethernet traffic analyzer. When Fibre Channel traffic is monitored with an Ethernet traffic monitoring session, at an Ethernet destination port, the destination traffic is FCoE. The Cisco UCS 6300 Fabric Interconnect supports FC SPAN only on the ingress side. A Fibre Channel port on a Cisco UCS 6248 Fabric Interconnect cannot be configured as a source port.

https://www.cisco.com/c/en/us/td/docs/unified_computing/ucs/ucs-manager/GUI-User-Guides/System-Monitoring/3-2/b_UCSM_GUI_System_Monitoring_Guide_3_2/b_UCSM_GUI_System_Monitoring_Guide_3_2_chapter_01101.pdf

NEW QUESTION 149

What is an advantage of NFS as compared to Fibre Channel?

- A. NFS enable thin provisioning for LUNs.
- B. NFS provides the dynamic allocation of storage capacity.
- C. NFS removes the impact of IP overhead.
- D. NFS provides direct access to the underlying storage hardware.

Answer: B

Explanation:

<https://www.ciscolive.com/c/dam/r/ciscolive/apjc/docs/2018/pdf/BRKINI-1011.pdf>

NEW QUESTION 150

Refer to the exhibit.

```
ACI-Leaf1# show ip route vrf DATACENTER:DC
10.20.1.0/24, ubest/mbest: 1/0, attached, direct, pervasive
    *via 10.0.8.65%overlay-1, [1/0], 4w3d, static
172.16.100.0/24, ubest/mbest: 1/0
    *via 10.1.168.95%overlay-1, [200/5], 3wod, bgp-132, internal, tag 132 (mpls-vpn)
172.16.99.0/24, ubest/mbest: 1/0
    *via 10.0.1.14, [20/0], 3wod, bgp-132, external, tag 200
```

Which two statements about the routing table of the leaf switch are true? (Choose two.)

- A. The next hop 10.0.1.14 for route 172.16.99.0/24 is the TEP address of a border leaf in ACI.
- B. 172.16.100.0/24 is a BD subnet in ACI.
- C. The next hop 10.0.8.65 for route 10.20.1.0/24 is the TEP address of a border leaf in ACI.

- D. The next hop 10.1.168.95 for route 172.16.100.0/24 is the TEP address of a border leaf in ACI.
 E. 10.20.1.0/24 is a BD subnet in ACI.

Answer: DE

NEW QUESTION 153

An engineer updated firmware on Fabric Interconnects and activates it. However, the endpoint fails to boot from the new firmware image. What is expected to occur in this case?

- A. The system defaults to the backup image version
 B. The system defaults to and boots into GOLD firmware image
 C. The system defaults to the GOLD firmware image
 D. The system defaults to and boots into kickstart image

Answer: A

Explanation:

https://www.cisco.com/c/en/us/td/docs/unified_computing/ucs/ucs-manager/CLI-User-Guides/Firmware-Mgmt/4-0/b_UCSM_CLI_Firmware_Management_Guide_4-0/b_UCSM_CLI_Firmware_Management_Guide_4-0_chapter_011.html

NEW QUESTION 154

What is required for using Ansible with HTTP/HTTPS protocol in a Cisco NX-OS environment?

- A. SSH
 B. Open Agent Container
 C. XML management interface
 D. NX-API

Answer: D

Explanation:

https://docs.ansible.com/ansible/2.5/modules/nxos_nxapi_module.html https://docs.ansible.com/ansible/latest/network/user_guide/platform_nxos.html

NEW QUESTION 158

The Cisco Nexus 5600 Series Switch experiences occasional packet drops on interface ethernet 1/16. An engineer wants to implement a SPAN session to investigate the issue further. The network analyzer to which the packets must be directed is located on interface 1/3. The analyzer is limited on disk space available for traffic capture, so the Nexus switch should send only the relevant data. Which two command sets configure the SPAN session that meets these requirements? (Choose two.)

- ☒ interface ethernet 1/3
 switchport monitor
- ☐ monitor session 2
 destination interface ethernet 1/3
 span interface ethernet 1/16
- ☐ interface ethernet 1/3
 switchport span
- ☒ span session 2
 type SPAN-on-DROP
 destination interface ethernet 1/3
 source interface ethernet 1/16
- ☒ monitor session 2 type SPAN-on-DROP
 destination interface ethernet 1/3
 source interface ethernet 1/16

- A. Option A
 B. Option B
 C. Option C
 D. Option D
 E. Option E

Answer: AE

Explanation:

<https://www.cisco.com/c/en/us/products/collateral/switches/nexus-5000-series-switches/white-paper-c11-73302> The information to be sent is regarding dropped packets only.

This configuration creates a SPAN session with type SPAN-on-DROP. In the following example, the source interface, where congestion may be present, is port e3/1. The destination port is e3/2, which must be in switchport monitor mode.

```
switch(config)# monitor session <session_number> type SPAN-on-DROP
switch(config-SPAN-on-DROP)# source interface e3/1
switch(config-SPAN-on-DROP)# destination interface e3/2
```


NEW QUESTION 162

The Cisco Nexus switch Generic Online Diagnostics policy for a PortLoopback test requires 10 consecutive failures to error disable the port. The customer wants to change it to 5 consecutive failures. Which configuration applies the changes for module 1 only?

- ☐ Nexus(config)# event manager applet custom-PortLoopback override __PortLoopback
Nexus(config-applet)# event gold mod all test PortLoopback testing-type bootup consecutive-failure 5
Nexus(config-applet)# action 1 publish-event
- ☐ Nexus(config)# event manager applet custom-PortLoopback override __PortLoopback
Nexus(config-applet)# event gold mod 1test PortLoopback testing-type bootup consecutive-failure 5
Nexus(config-applet)# action 1 publish-event
- ☐ Nexus(config)# event manager applet custom-PortLoopback override __PortLoopback
Nexus(config-applet)# event gold mod all test PortLoopback testing-type monitoring consecutive-failure 5
Nexus(config-applet)# action 1 policy-default
- ☐ Nexus(config)# event manager applet custom-PortLoopback override __PortLoopback
Nexus(config-applet)# event gold mod 1 test PortLoopback testing-type monitoring consecutive-failure 5
Nexus(config-applet)# action 1 policy-default

- A. Option A
- B. Option B
- C. Option C
- D. Option D

Answer: D

Explanation:

“mod all” is incorrect. “mod 1test” is incorrect. “publish event” is incorrect. “mod 1 test” is correct. It is with “policy-default”.

https://www.cisco.com/c/en/us/td/docs/switches/datacenter/nexus7000/sw/system-management/guide/b_Cisco_Nexus_7000_Series_NX-OS_System_Management_Configuration_Guide-RI/configuring_online_diagnostics.html

https://www.cisco.com/c/en/us/td/docs/switches/datacenter/nexus9000/sw/93x/system-management/bcisco-nexus-9000-series-nx-os-system-management-configuration-guide-93x/b-cisco-nexus-9000-seriesnxos-system-management-configuration-guide-93x_chapter_011010.html

<https://www.ciscolive.com/c/dam/r/ciscolive/us/docs/2017/pdf/BRKDCN-3234.pdf>

NEW QUESTION 166

A company must security harden its Cisco UCS C-Series servers. The security policy requires all out-of-band management to meet these requirements

- It must encrypt all traffic
- It must use nondefault ports
- It must provide private administrative sessions Which Cisco IMC corrrflguratn meets the requirements?

- ☐ data1# scope sol
data1 /sol # set enabled yes
data1 /sol # set encrypted tls1.2
data1 /sol # set port 3389
data1 /sol # set session max 2
data1 /sol # set deny-local yes
- ☐ data1# scope cimc
data1 /cimc # set enabled yes
data1 /cimc # set encrypted tls
data1 /cimc # set kvm-port 1972
data1 /cimc # set max-sessions 1
data1 /cimc # set local-session deny
- ☐ data1# scope oob
data1 /oob # set enabled no
data1 /oob # set encrypted yes
data1 /oob # set kvm-port 2068
data1 /oob # set max-sessions 1
data1 /oob # set local-access no
- ☐ data1# scope kvm
data1 /kvm # set enabled yes
data1 /kvm # set encrypted yes
data1 /kvm # set kvm-port 3168
data1 /kvm # set max-sessions 1
data1 /kvm # set local-video no

- A. Option A
- B. Option B
- C. Option C
- D. Option D

Answer: D

NEW QUESTION 169

A network engineer repeatedly saves a configuration on Catalyst switches to NVRAM using the write memory command. What action should be taken to implement the same action on Nexus switches?

- A. Use the write memory command to save the configuration.
- B. Use the alias command to use the write memory command.
- C. Use the exit command to leave the configuration mode and save the configuration automatically.
- D. Use the wri command to use the copy running-config startup-config command.

Answer: B

NEW QUESTION 172

Which two actions should be performed before upgrading the infrastructure and firmware of multiple UCS blades? (Choose two)

- A. Verify if the bootflash on the fabric interconnects in the Cisco UCS has at least 15% available space
- B. Enable Smart Call Home feature during the firmware upgrade process
- C. Verify if the bootflash on the fabric interconnects in the Cisco UCS has at least 10% available space
- D. Run the Check Conformance feature to verify that all your components are running the compatible firmware version after the upgrade
- E. Get Full State and All Configuration backup files before beginning the upgrade

Answer: DE

NEW QUESTION 175

What is a benefit of using Cisco Tetration?

- A. It collects telemetry data from servers and then uses software sensors to analyze flow information.
- B. It collects near-real time data from servers and inventories the software packages that exist on servers.
- C. It collects policy compliance data and process details.
- D. It collects enforcement data from servers and collects interpacket variation.

Answer: A

NEW QUESTION 177

A network engineer must create an EEM script that saves a copy of the running configuration on bootflash and writes a message to syslog when a user saves the configuration to a Cisco Nexus switch. Which configuration set should be applied to complete this task?

- ☐ event manager applet local- backup
 - event cli match "copy running-config startup-config"
 - action 1 cli copy running-config bootflash:/current_config.txt
 - action 2 syslog msg Configuration saved and copied to bootflash
- ☐ event manager applet local- backup
 - event cli match "write memory"
 - action 1 cli copy running-config bootflash:/current_config.txt
 - action 2 snmp-trap strdata "Configuration saved and copied to bootflash"
- ☐ event manager applet local- backup
 - event cli match "copy running-config startup-config"
 - action 1 cli copy running-config bootflash:/current_config.txt
 - action 2 syslog msg Configuration saved and copied to bootflash
 - action 3 event-default
- ☐ event manager applet local- backup
 - event cli match "write memory"
 - action 1 cli copy running-config bootflash:/current_config.txt
 - action 2 syslog msg Configuration saved and copied to bootflash
 - action 3 event-default

- A. Option A
- B. Option B
- C. Option C
- D. Option D

Answer: C

Explanation:

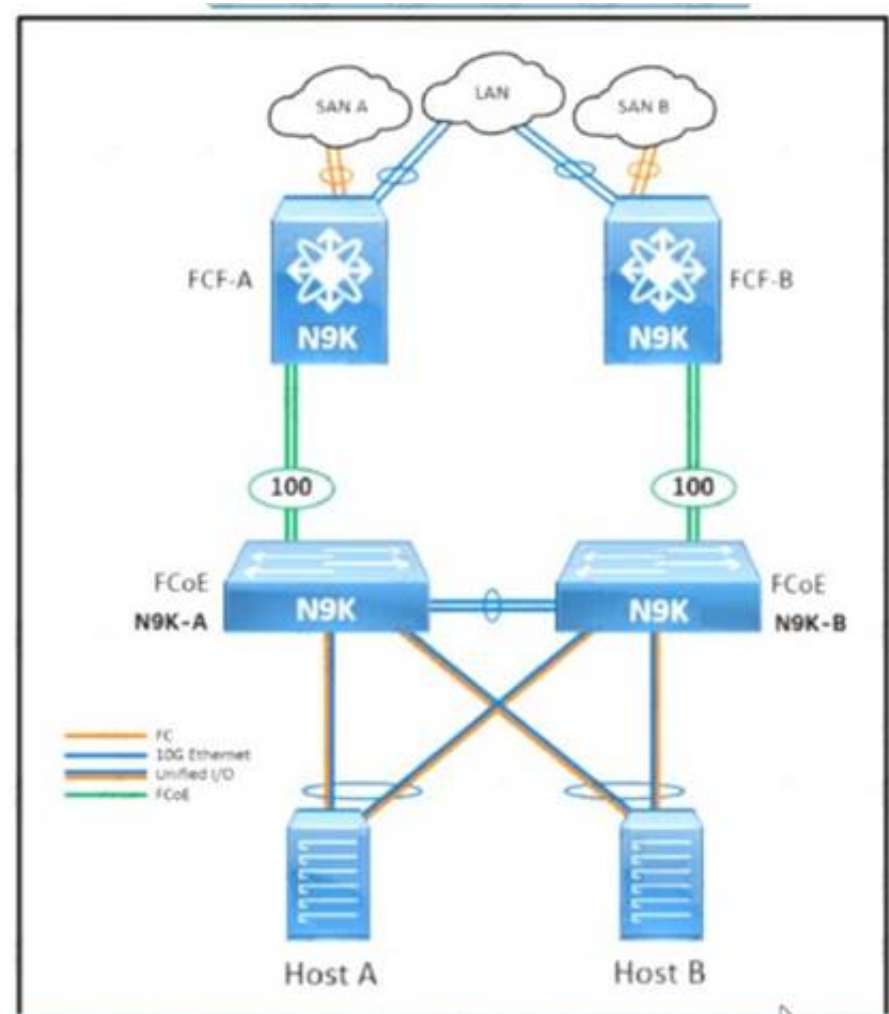
The command write memory is not valid in NX-OS

The "event-default"

If you want to allow the triggered event to process any default actions, you must configure the EEM policy to allow the default action. For example, if you match a CLI command in a match statement, you must add the event-default action statement to the EEM policy or EEM will not allow the CLI command to execute.

NEW QUESTION 182

Refer to the exhibit.



An engineer must configure FCoE between the N9K-A switch and the FCF-A Nexus 9000 core switch. The deployment has these characteristics:

- The N9K-A and N9K-B top-of-rack switches share the domain ID of the core switches.
- The hosts are equipped with converged network adapters.
- The only VSAN that is permitted to traverse port-channel 100 is VSAN 20. Which configuration completes the FCoE configuration on the N9K-A device?

- ☐ N9K-A(config)# feature fcoe
N9K-A(config)# feature npv
N9K-A(config)# interface vfc 100
N9K-A(config-if)# bind interface port-channel 100
N9K-A(config-if)# switchport mode F
N9K-A(config-if)# switchport trunk allowed vsan 20
- ☐ N9K-A(config)# feature fcoe
N9K-A(config)# feature npv
N9K-A(config)# interface vfc 100
N9K-A(config-if)# bind interface port-channel 100
N9K-A(config-if)# switchport mode N
N9K-A(config-if)# switchport trunk allowed vsan 1, 20
- ☐ N9K-A(config)# feature-set fcoe-npv
N9K-A(config)# interface vfc-port-channel 100
N9K-A(config-if)# switchport mode NP
N9K-A(config-if)# switchport trunk allowed vsan 20
- ☐ N9K-A(config)# feature-set fcoe-npv
N9K-A(config)# interface vfc-port-channel 100
N9K-A(config-if)# switchport mode E
N9K-A(config-if)# switchport trunk allowed vsan 1, 20

- A. Option A
- B. Option B
- C. Option C
- D. Option D

Answer: C

NEW QUESTION 185

Cisco Nexus 9000 Series Switches are configured with LACP protocol and default aging timers. What is the impact on the LACP peer during an ISSU upgrade?

- A. The LACP peer connection terminates.
- B. The LACP peer session remains up.
- C. The LACP peer renegotiates the adjacency.
- D. The LACP peer connection resets.

Answer: B

Explanation:

https://www.cisco.com/c/en/us/td/docs/switches/datacenter/nexus9000/sw/6-x/interfaces/configuration/guide/b_ISSU_and_ungraceful_switchovers_are_not_supported_with_LACP_fast_timers.

NEW QUESTION 190

An engineer must migrate a Cisco UCS C-Series server from Cisco SingleConnect to direct integration mode. The Cisco UCS Manager Rack Server Discovery Policy and Rack Management Connection Policy are set to immediate and Auto-Acknowledge. Which set of steps accomplishes this task?

- ☐ Disconnect the cables from the FEX.
Connect the cables to appliance ports on the fabric interconnect.
Reset the Cisco IMC of the server.
- ☐ Disconnect the cables from the FEX.
Connect the cables to server ports on the fabric interconnect.
Reset the Cisco IMC of the server.
- ☐ Disconnect the cables from the FEX.
Connect the cables to appliance ports on the fabric interconnect.
Reacknowledge the server.
- ☐ Disconnect the cables from the FEX.
Connect the cables to server ports on the fabric interconnect.
Reacknowledge the server.

- A. Option A
B. Option B
C. Option C
D. Option D

Answer: D

NEW QUESTION 191

Which protocol does Cisco Hyperflex use to share data among nodes in a VMware vSphere environment?

- A. CIFS
B. FCoE
C. SMB
D. NFS

Answer: D

NEW QUESTION 196

Drag and drop the characteristics from the left onto the correct storage systems on the right.

expensive and complex to manage

moderately expensive and simple to configure

most resilient, highly scalable, and high-performance storage

appliance providing file system access

lacks scalability, performance, and advanced features

NAS

SAN

- A. Mastered
B. Not Mastered

Answer: A

Explanation:

Graphical user interface Description automatically generated with medium confidence
2,4,5 – NAS 1,3 - SAN

NEW QUESTION 198

An engineer requires the Cisco Fabric Services to distribute NTP configuration only to the members within the scope of a VSAN that belongs to a Cisco Unified Network. Which scope distribution must be selected to meet this requirement?

- A. Logical scope
B. Physical scope
C. Uncoordinated scope
D. Coordinated scope

Answer: A

NEW QUESTION 201

Refer to the exhibit

MDS-B# show role			
Role: network-admin			
Description: Predefined Network Admin group. This role cannot be modified.			
Vsan policy: permit (default)			

Rule	Type	Command-type	Feature

1	permit	clear	*
2	permit	config	*
3	permit	debug	*
4	permit	exec	*
5	permit	show	*
Role: default-role			
Description: This is a system defined role and applies to all users.			
Vsan policy: permit (default)			

Rule	Type	Command-type	Feature

1	permit	show	system
2	permit	show	snmp
3	permit	show	module
4	permit	show	hardware
5	permit	show	environment
Role: san-users			
Description: SAN users			
Vsan policy: permit (default)			

A network engineer created a new role to be assigned to the SAN users The requirement is for users to have these characteristics

- permitted to show access to the system, SNMP, module, and hardware information
- permitted to run debug zone and exec fcping commands
- restricted from accessing show feature environment command

Which configuration set meets these requirements?

- A. Option A
- B. Option B
- C. Option C
- D. Option D

Answer: D

NEW QUESTION 203

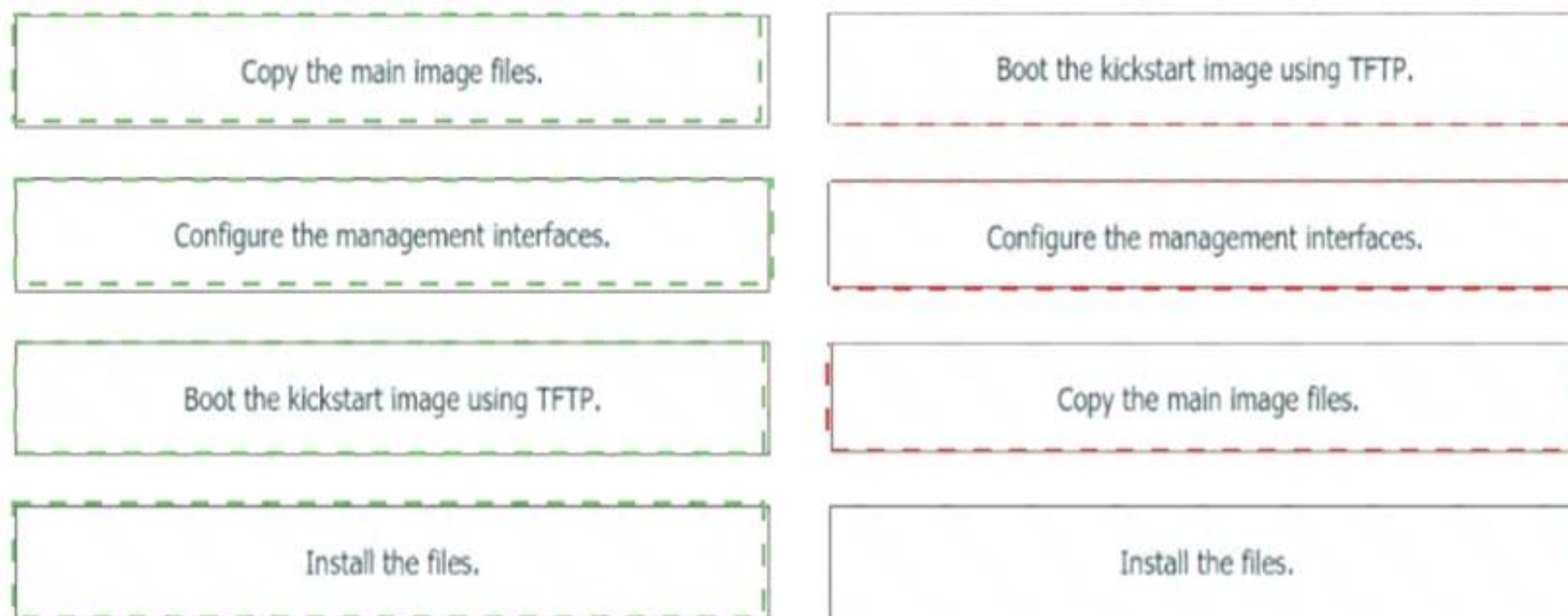
Drag and drop the steps on the left onto the order that they must be implemented on the right to recover a fabric interconnect when there is no working image on the bootflash.

Copy the main image files.	step 1
Configure the management interfaces.	step 2
Boot the kickstart image using TFTP.	step 3
Install the files.	step 4

- A. Mastered
- B. Not Mastered

Answer: A

Explanation:



NEW QUESTION 207

Which statement about the impact of a rolling EPLD upgrade on a Cisco MDS 9000 Series Switch is true?

- A. All modules on the switch are disrupted.
- B. An EPLD upgrade is nondisruptive.
- C. Only the modules that are being upgraded are disrupted.
- D. The upgrade can be performed from the standby supervisor module.

Answer: C

Explanation:

https://www.cisco.com/c/en/us/td/docs/switches/datacenter/mds9000/sw/6_2/release/notes/epld/epld_rn.html#pgfId-241919

NEW QUESTION 212

Which Cisco UCS Manager XML encoded backup type must be used to back up user names, roles, and service profiles?

- A. Full State Configuration
- B. Logical Configuration
- C. All Configuration
- D. System Configuration

Answer: C

NEW QUESTION 215

What is the impact of an EPLD upgrade on a Cisco MDS 9000 Series Switch?

- A. The active supervisor traffic is disrupted.
- B. The upgrade disrupts the management connectivity to the switch.
- C. The standby supervisor module reloads multiple times.
- D. The upgrade process disrupts only the module that is being upgraded.

Answer: D

NEW QUESTION 217

Refer to the exhibit.

```

; Router 1 configuration
interface loopback1
  ip address 10.10.32.121/30
  ip ospf network point-to-point
  ip router ospf 1 area 0.0.0.0
  ip pim sparse-mode

ip pim rp-address 10.10.32.122 group-list 225.0.0.0/8 bi-dir
  
```

In a bidirectional PIM network using Phantom RP as an RP redundancy mechanism, two Cisco NX-OS routers have these requirements:

- R1 must be the active RP.
- R2 must be the backup RP that is used only if R1 is not reachable

Drag and drop the configuration steps to complete the configuration for Router 2. Not all configuration steps are used.

```

; Router 2 configuration
interface loopback1
  ip address 
  ip ospf network 
  ip router ospf 1 area 0.0.0.0
  ip pim 
  ip pim rp-address group-list 225.0.0.0/8 bi-dir
  
```

10.10.32.121/32	10.10.32.121	point-to-point	broadcast
10.10.32.121/29	10.10.32.122	sparse-mode	dense-mode

- A. Mastered
 B. Not Mastered

Answer: A

Explanation:

Graphical user interface, text, application Description automatically generated

Answer :

ip address 10.10.32.121/29

ip ospf network point-to-point

router ospf 1 area 0.0.0.0

ip pim sparse-mode

ip pim rp-address 10.10.32.122 group-list 255.0.0.0/8 bi-dir

NEW QUESTION 220

An engineer installed a new Nexus switch with the mgm0 interface in vrf management. Connectivity to the rest of the network needs to be tested from the guest shell of the NX-OS. Which command tests connectivity from the shell of the NX-OS?

- ☐ [guestshell@guestshell ~]\$ ping 173.37.145.84 vrf management
- ☐ [guestshell@guestshell ~]\$ chvrf management ping 173.37.145.84
- ☒ [guestshell@guestshell ~]\$ iping vrf management ip 173.37.145.84
- ☐ [guestshell@guestshell ~]\$ dohost "ping vrf management 173.37.145.84"

- A. Option A
 B. Option B
 C. Option C
 D. Option D

Answer: B

NEW QUESTION 221

An engineer must configure Cisco IMC server management NIC for autonegotiation. Which setting should be selected?

- A. Cisco card
 B. shared LOM
 C. dedicated
 D. shared LOM EXT

Answer: C

Explanation:

https://www.cisco.com/c/en/us/td/docs/unified_computing/ucs/c/sw/cli/config/guide/4_0/b_Cisco_UCS_CSeries

CLI_Configuration_Guide_40/b_Cisco_UCS_CSeries_
 CLI_Configuration_Guide_40_chapter_01000.html

<https://www.cisco.com/c/en/us/support/docs/servers-unified-computing/unified-computing-system/200221-Auto-negotiation-not-enabling-by-default.html>

NEW QUESTION 223

An engineer must implement private VLANs for a group of Cisco UCS 8-Series servers. The primary VLAN is present, But the secondary VLAN must Be added to Both fabrics. Which configuration set accomplishes this task?

- ☐ UCS-A# scope eth-uplink
 UCS-A /eth-uplink # create vlan vlan1981 1981
 UCS-A /eth-uplink/vlan* # set sharing none
- ☐ UCS-A# scope eth-uplink
 UCS-A /eth-uplink # create vlan vlan1981 1981
 UCS-A /eth-uplink/vlan* # set sharing isolated
- ☐ UCS-A# scope eth-uplink
 UCS-A /eth-uplink # scope fabric a
 UCS-A /eth-uplink/fabric # create vlan vlan1981 1981
 UCS-A /eth-uplink/fabric/vlan* # set sharing private
- ☐ UCS-A# scope eth-uplink
 UCS-A /eth-uplink # scope fabric a
 UCS-A /eth-uplink/fabric # create vlan vlan1981 1981
 UCS-A /eth-uplink/fabric/vlan* # set sharing secondary

- A. Option A
- B. Option B
- C. Option C
- D. Option D

Answer: B

NEW QUESTION 228

Refer to the exhibit.

Python Code:

```
import requests
import json

url='http://lab-93180bdlf-sw1/ins'
switchuser='dazfre'
switchpassword='Clscorox0'

myheaders={'content-type' 'application/json'}
payload={
  "ins_api": {
    "version": "1.0",
    "type": "cli_show",
    "chunk": "0",
    "sid": "1",
    "input": "configure terminal : feature hsrp",
    "output_format": "json"
  }
}
response = requests post(url,data=json.dumps(payload),
headers=myheaders,auth=(switchuser,switchpassword))

print(response.text)
```

ERROR MESSAGE

```
{
  "ins_api" [
    "type": "cli_show",
    "version": "1.0",
    "sid": "eoc",
    "outputs", [
      "output" [{
        "clierror" "% invalid command\n",
        "input" "configure terminal",
        "msg" "input CLI command error",
        "code" "400"
      },{
        "clierror" "% invalid command\n",
        "input" "feature hsrp",
        "msg" "input CLI command error",
        "code" "400"
      }
    ]
  ]
}
```

Why does the python code for Cisco NX-API print an error message?

- A. The “type” is wrong in the header of the request and should be “cli_ conf”.
- B. NX-API does not allow configuration for features via the requests module.
- C. The “type” is wrong is the body of the request and should be “cli_ conf”.
- D. The JSON is not a supported format for the NX-API.

Answer: C

Explanation:

"Commands that belong to different message types should not be mixed. For example, show commands are cli_show message type and are not supported in cli_conf mode." [https://www.cisco.com/c/en/us/td/docs/switches/datacenter/nexus7000/sw/programmability/guide/ cisco_nexus7000_programmability_guide_8x/b-cisco-nexus7000-programmability-guide- 8x_chapter_011.html](https://www.cisco.com/c/en/us/td/docs/switches/datacenter/nexus7000/sw/programmability/guide/cisco_nexus7000_programmability_guide_8x/b-cisco-nexus7000-programmability-guide- 8x_chapter_011.html)

the payload "type" value is wrong in the body of the request. For the request to be successful, it should be changes to "cli_conf".

For example, if we run the same request with the updated payload:

```
{
  "ins_api": { "version": "1.0",
  "type": "cli_conf",
  "chunk": "0",
  "sid": "1",
  "input": "configure terminal ;feature hsrp", "output_format": "json"
}
```

We get a 200 response:

```
{
  "ins_api": { "sid": "eoc",
  "type": "cli_conf",
  "version": "1.0", "outputs": {
  "output": [
    {
      "code": "200",
      "msg": "Success",
      "body": {}
    },
    {
      "code": "200",
      "msg": "Success",
      "body": {}
    }
  ]
}
}
```

CLI verification: nxos9kv# sh run | inc hsrp feature hsrp

NEW QUESTION 233

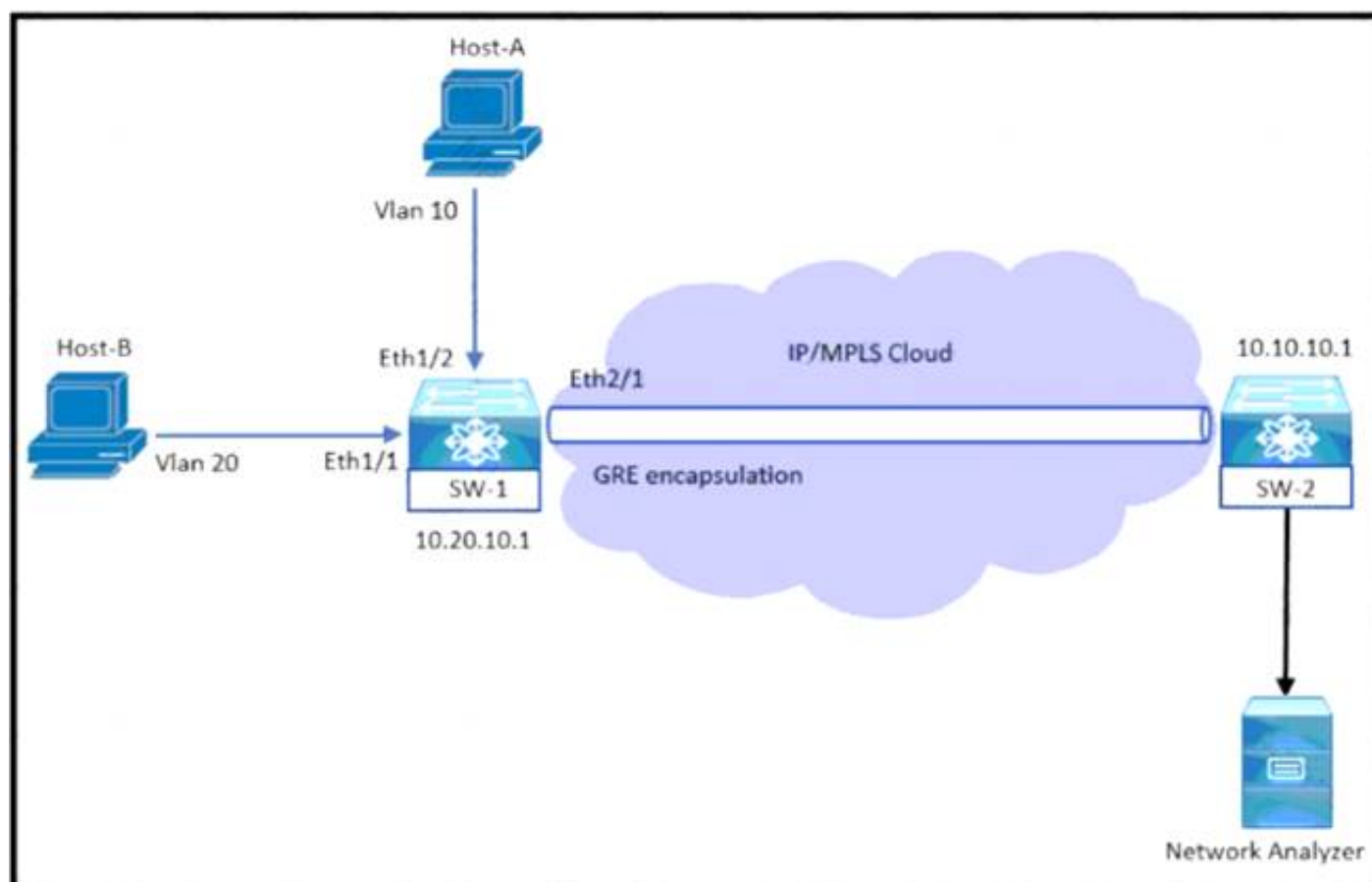
A network engineer must migrate a Cisco WSA virtual appliance from one physical host to another physical host by using VMware vMotion. What is a requirement for both physical hosts?

- A. The hosts must run Cisco AsyncOS 10.0 or greater.
- B. The hosts must have access to the same defined network.
- C. The hosts must run different versions of Cisco AsyncOS.
- D. The hosts must use a different datastore than the virtual appliance

Answer: B

NEW QUESTION 236

Refer to the exhibit.



An engineer monitors ingress traffic from Host-A and all traffic for VLAN 20 from Host-B Which configuration must be implemented to monitor and export traffic to Network Analyzer?

- ☐ SW-1(config)# monitor session 5
SW-1(config-monitor)# source interface ethernet 1/2 rx
SW-1(config-monitor)# source interface ethernet 1/1 tx
SW-1(config-monitor)# source vlan 20 both
SW-1(config-monitor)# destination ip 10.10.10.1
SW-1(config-monitor)# no shut
- ☐ SW-1(config)# monitor session 5 type erspan-source
SW-1(config-erspan-src)# source interface ethernet 1/2 rx
SW-1(config-erspan-src)# source vlan 20 both
SW-1(config-erspan-src)# destination ip 10.10.10.1
SW-1(config-erspan-src)# erspan-id 111
SW-1(config-erspan-src)# no shut
- ☐ SW-1(config)# monitor session 5 type erspan
SW-1(config-erspan-src)# source interface ethernet 1/2 rx
SW-1(config-erspan-src)# source interface ethernet 1/1 both
SW-1(config-erspan-src)# destination ip 10.10.10.1
SW-1(config-erspan-src)# mtu 1000
SW-1(config-erspan-src)# no shut
- ☐ SW-1(config)# monitor session 5
SW-1(config-monitor)# source interface ethernet 1/2 rx
SW-1(config-monitor)# source interface ethernet 1/1 both
SW-1(config-monitor)# source vlan 20 both
SW-1(config-monitor)# destination interface ethernet 2/1
SW-1(config-monitor)# no shut

- A. Option A
- B. Option B
- C. Option C
- D. Option D

Answer: B

NEW QUESTION 239

An engineer is implementing the Cisco ACI fabric and must create two different vPCs from leaf switches A and B. The vPCs are deployed as follows:

- vPC 1 encompasses ports Eth 1 /1 on leaf A and B and connects to server 1.
- vPC 2 encompasses port Eth1/2 on leaf A and B and connects to server 2.

A leaf switch profile listing leaves A and B is already configured Which ACI object must be created to meet these requirements?

- A. two vPC interface policy groups
- B. one access port interface policy group
- C. two PortChannel interface policy groups
- D. one vPC interface policy group

Answer: A

NEW QUESTION 243

An engineer must perform a nondisruptive software upgrade on a dual supervisor Cisco Nexus 7000 series switch. What is the cause of the upgrade being disruptive?

- A. The show install all impact command is not issued before the upgrade

- B. The kickstart image is installed by using the Install all kickstart image system image command
- C. Attempt to simultaneously upgrade more than three cards
- D. Change to the configuration settings or the network connections during the upgrade process

Answer: D

NEW QUESTION 246

Refer to the exhibit.

```
NEXUS (config)# feature tacacs+
NEXUS (config)# tacacs-server timeout 5
NEXUS (config)# tacacs-server directed-request
NEXUS (config)# tacacs-server deadtime 0
NEXUS (config)# tacacs server host 10.1.50.20 port 49
NEXUS (config)# tacacs-server host 10.1.50.20 key 7 "Flwhg123" timeout 1
NEXUS (config)# aaa group server tacacs+ ISE
NEXUS (config-tacacs+)# server 10.1.50.20
NEXUS (config-tacacs+)# deadtime 10
NEXUS (config-tacacs+)# use-vrf management
NEXUS (config-tacacs+)# source-interface mgmt 0
NEXUS (config)# aaa authentication login default group ISE
```

What is the result of implementing this configuration?

- A. The TACACS+ server uses the type-6 encrypted format.
- B. The switch queries the TACACS+ server by using a clear text PAP login.
- C. The timeout value on the TACACS+ server is 10 seconds.
- D. The switch queries the TACACS+ server by using an encrypted text PAP login.

Answer: D

Explanation:

tacacs-server key

To configure a global TACACS+ shared secret key, use the tacacs-server key command. To remove a configured shared secret, use the no form of this command.

tacacs-server key [0 | 7] shared-secret Syntax Description

7 (Optional) Configures a preshared key specified in encrypted text to authenticate communication between the TACACS+ client and server.

By default, the Cisco NX-OS device uses Password Authentication Protocol (PAP) authentication between the Cisco NX-OS device and the remote server. If you enable CHAP, you need to configure your RADIUS or TACACS+ server to recognize the CHAP vendor-specific attributes (VSAs).

NEW QUESTION 251

An engineer must implement the FCoE on the Cisco Nexus 9000 Series Switch-based infrastructure. The deployment will contain dual-homed fabric extenders and must support jumbo frames with port channels. Which two sets of actions complete the configuration? (Choose two.)

- ☒ Configure the interface with mtu 9516.
Disable the feature NPIV.
- ☒ Create a virtual Fibre Channel interface.
Bind vFC to physical interface.
- ☐ Create a FCoE switch profile.
Enable config sync.
- ☐ Create a dedicated VSAN for FEX.
Bind VSAN to FEX uplinks.
- ☐ Execute fcoe enable-fex.
Configure FEX uplinks with mtu 9216.

- A. Option A
- B. Option B
- C. Option C
- D. Option D
- E. Option E

Answer: BE

NEW QUESTION 256

Refer to the exhibit.

```
UCS-A# scope adapter 1/1/1
UCS-A# /chassis/server/adapter # show image
Name                               Type      Version    State
-----
ucs-m81kr-vic.2.2.1b.bin          Adapter   2.2(1b)    Active

UCS-A# /chassis/server/adapter # update firmware 2.2(1b)
UCS-A# /chassis/server/adapter* # activate firmware 2.2(1b)
set-startup-only
UCS-A# /chassis/server/adapter* # commit-buffer
UCS-A# /chassis/server/adapter #
```

What is the result of this series of commands?

- A. It reboots the server immediately.
- B. It verifies the firmware update on the server.
- C. It activates the firmware on the next adapter boot.
- D. It updates the firmware on adapter 1/1/1 immediately.

Answer: C

Explanation:

https://www.cisco.com/c/en/us/td/docs/unified_computing/ucs/ucs-manager/CLI-User-Guides/Firmware-Mgmt/ Graphical user interface, text, application, email Description automatically generated

Step 6	UCS-A /chassis/server/adapter # activate firmware version-num [set- startup-only]	Activates the selected firmware version on the adapter. Use the set-startup-only keyword if you want to move the activated firmware into the pending-next-boot state and not immediately reboot the server. The activated firmware does not become the running version of firmware on the adapter until the server is rebooted. You cannot use the set-startup-only keyword for an adapter in the host firmware package.
--------	--	---

NEW QUESTION 261

An engineer must optimize ARP responses and reduce unnecessary ARP broadcasts over the VXLAN/EVPN fabric. Which action accomplishes these tasks?

- A. Configure ip proxy-arp under the VLAN SVI associated with the VXLAN VNI.
- B. Configure ip proxy-arp within the VXLAN VNI configuration under the VTEP NVE interface.
- C. Configure suppress-arp within the VXLAN VNI configuration under the VTEP NVE interface.
- D. Configure suppress-arp under the VLAN SVI associated with the VXLAN VNI.

Answer: C

NEW QUESTION 263

A Cisco ACI engineer must configure an access port on a Cisco ACI leaf switch. The access policy should be configured so that it supports L3out connectivity concurrently with several EPGs that are mapped to this interface with the static port method. How should the access policy be configured?

- A. by linking the interface policy group to multiple Attachable Access Entity Profiles
- B. with a single Attachable Access Entity Profile that is linked to the corresponding routed domain and physical domain
- C. with two interface policy groups that are linked to the same interface profile port selector
- D. by mapping a single physical domain, mapped to the L3out and EPG interfaces

Answer: D

NEW QUESTION 266

A Cisco UCS user called "Employee1" accidentally changed the boot policy of the Cisco UCS server at the Cisco UCS Manager root level. This change impacted all service profiles, and their storage connectivity was lost. The system administrator wants to prevent this issue from recurring in the future. The new security policy mandates that access must be restricted up to the organization level and prevent other users from modifying root policies. Which action must be taken to meet these requirements?

- A. Modify the privilege level assigned to the user
- B. Assign users to a specific Cisco UCS locale
- C. Assign the user "Employee1" the network-operator role
- D. Define a custom user role and assign it to users

Answer: B

Explanation:

https://www.cisco.com/c/en/us/td/docs/unified_computing/ucs/ucs-manager/GUI-User-Guides/Admin-Managem User Locales You can assign a user to one or more locales. Each locale defines one or more organizations (domains) to which a user can access. Access is usually limited to the organizations specified in the locale.

https://www.cisco.com/c/en/us/td/docs/unified_computing/ucs/ucs-manager/GUI-User-Guides/Admin-Management/4-1/b_Cisco_UCS_Admin_Mgmt_Guide_4-1/m_rolebased_access_control_configuration.html#d18994e1993a1635

NEW QUESTION 269

What are two types of FC/FCoE oversubscription ratios? (Choose two.)

- A. server storage to end-node count
- B. port bandwidth to uplink bandwidth
- C. edge ISL bandwidth to core ISL bandwidth
- D. host bandwidth to storage bandwidth
- E. switch processing power to end-node processing power

Answer: CD

Explanation:

<https://www.ciscolive.com/c/dam/r/ciscolive/us/docs/2017/pdf/BRKDCN-1121.pdf>

https://www.cisco.com/c/en/us/td/docs/switches/datacenter/nexus5000/sw/operations/n5k_fcoe_ops.html

NEW QUESTION 274

An administrator needs to configure an automated policy to shut down a link when a given threshold is exceeded on MDS switch. Which feature needs to be used?

- A. Scheduler
- B. RMON
- C. EEM
- D. Call Home

Answer: C

Explanation:

https://www.cisco.com/c/en/us/td/docs/switches/datacenter/mds9000/sw/6_2/configuration/guides/interfaces/nx-os/cli_interfaces/intf.html

NEW QUESTION 277

An engineer evaluates a UI-based infrastructure management system capable of monitoring and deploying standardize VXLAN BGP EVPN deployments. The storage administrator else need the solution to manage the cisco MDS 9090 series Switches. Which solution meets these requirements?

- A. Intersight
- B. UCSD
- C. Tetration
- D. DCNM

Answer: D

NEW QUESTION 281

What are two capabilities of the Cisco Network Assurance Engine? (Choose two.)

- A. It verifies the speed of network packet flows by using telemetry.
- B. It predicts the network load on a data center.
- C. It validates that devices comply with network security policies.
- D. It ensures that network performance meets an SLA.
- E. It predicts the impact of changes to the network.

Answer: CE

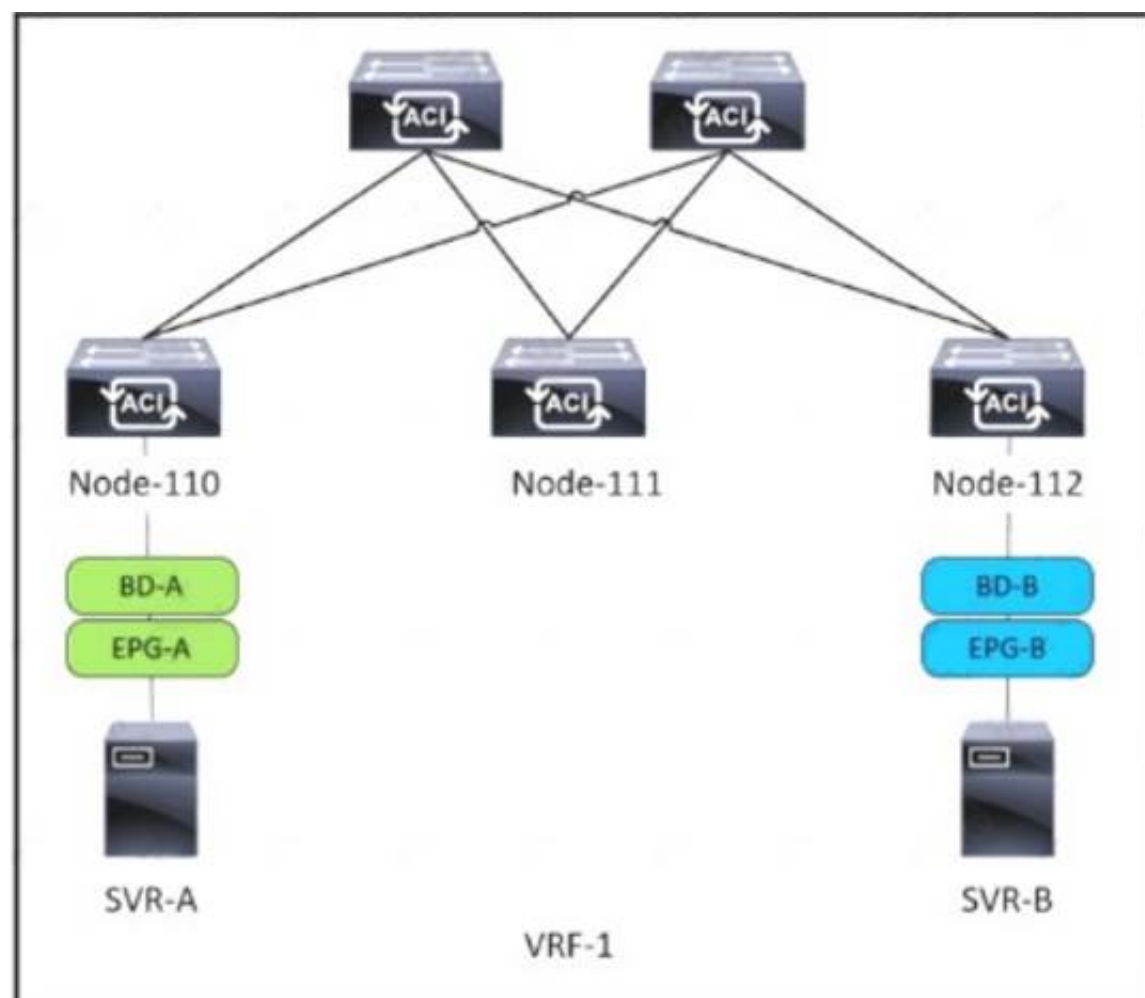
Explanation:

- Predict the impact of network changes
- Verify network-wide behavior
- Ensure network security policy and compliance

<https://www.cisco.com/c/en/us/products/collateral/data-center-analytics/network-assurance-engine/at-a-glance-c>

NEW QUESTION 283

Refer to the exhibit.



SVR-A in EPG-A/BD-A fails to reach SVR-B in EPG-B/BD-B. Which two conditions should be verified to analyze the traffic between the two EPGs? (Choose two.)

- A. A contract exists between EPG-A and EPG-B and allows the traffic.
- B. Limit Endpoint Learning is disabled on the bridge domain for EPG-B.
- C. SVR-B is learned as an endpoint in EPG-B from Node-112.
- D. EPG-A and EPG-B are excluded from the preferred group.
- E. The bridge domain for EPG-B floods ARP packets.

Answer: AC

NEW QUESTION 287

Several production and development database servers exist in the same EPG and IP subnet. The IT security policy is to prevent connections between production and development. Which attribute must be used to assign the servers to different microsegments?

- A. Data center
- B. VMM domain
- C. VM name
- D. IP address

Answer: C

Explanation:

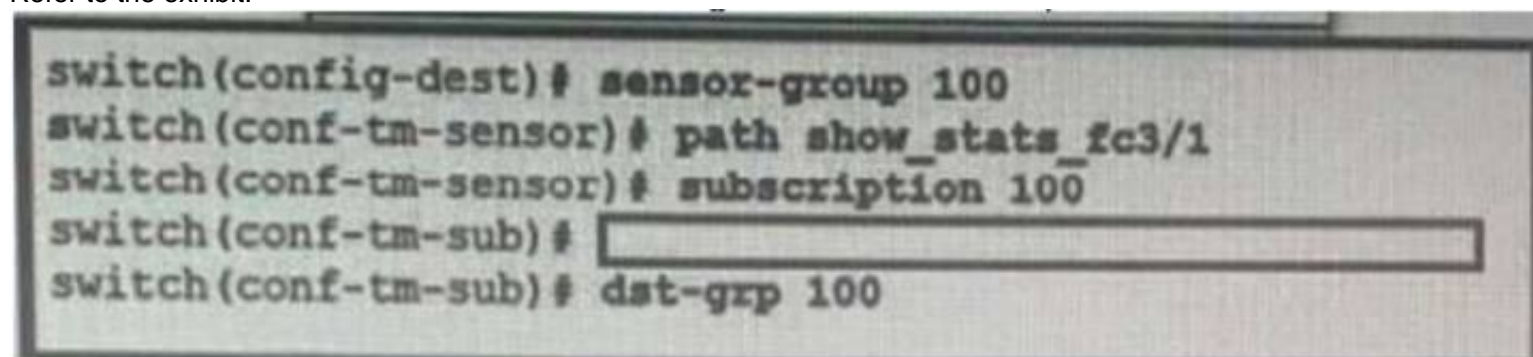
https://www.cisco.com/c/en/us/td/docs/switches/datacenter/aci/apic/sw/3-x/virtualization/b_ACI_Virtualization_

Example: **Microsegmentation with Cisco ACI Within a Single EPG or Multiple EPGs in the Same Tenant**

You might assign web servers to an EPG so that you can apply the similar policies. By default, all endpoints within an EPG can freely communicate with each other. However, if this web EPG contains a mix of production and development web servers, you might not want to allow communication between these different types of web servers. Microsegmentation with Cisco ACI allows you to create a new EPG and autoassign endpoints based on their VM name attribute, such as "Prod-xxxx" or "Dev-xxx".

NEW QUESTION 290

Refer to the exhibit.



An engineer needs to implement streaming telemetry on a cisco MDS 9000 series switch. The requirement is for the show command data to be collected every 30 seconds and sent to receivers. Which command must be added to the configuration meet this requirement?

- A. Sensor-grp 200 sample-period 30000

- B. Snsr-grp 200 sample-interval 30
- C. Sensor-grp 200 sample-period 30
- D. Snsr-grp 200 sample-interval 30000

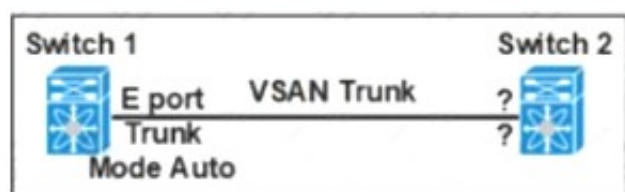
Answer: D

Explanation:

snsr-grp <id> sample-interval <interval> Currently, sensor group ID supports only numeric ID values. Specify the streaming sample interval value; the value must be in milliseconds. The minimum streaming sample interval that is supported is 30000 milliseconds.
https://www.cisco.com/c/en/us/td/docs/switches/datacenter/mds9000/sw/8_x/config/san_analytics/cisco-mds900

NEW QUESTION 295

Refer to the exhibit.



Which feature set must be used to configure on switch 2 to establish a VSAN trunk between switch 1 and switch 2?

- ☒ • E Port
• Trunk Mode On
- ☐ • F Port
• Trunk Mode Passive
- ☐ • N Port
• Trunk Mode Active
- ☒ • NP Port
• Trunk Mode Auto

- A. Option A
- B. Option B
- C. Option C
- D. Option D

Answer: A

NEW QUESTION 298

An engineer needs to make an XML backup of Cisco UCS Manager The backup should be transferred using an authenticated and encrypted tunnel and it should contain all system and service profiles configuration Which command must be implemented to meet these requirements?

- ☐ create file scp://user@host35/backups/all-config9.bak all-configuration
- ☐ copy startup-config scp://user@host35/backups/all-config9.bak all-configuration
- ☒ create backup scp://user@host35/backups/all-config9.bak all-configuration
- ☐ copy running-config scp://user@host35/backups/all-config9.bak all-configuration

- A. Option A
- B. Option B
- C. Option C
- D. Option D

Answer: C

Explanation:

https://www.cisco.com/en/US/docs/unified_computing/ucs/sw/cli/config/guide/1.4.1/CLI_Config_Guide_1_4_1
The following example creates a disabled all-configuration backup operation for hostname host35 and commits the transaction:

```
UCS-A# scope system
UCS-A /system* # create backup scp://user@host35/backups/all-config9.bak all-configuration disabled
Password:
UCS-A /system* # commit-buffer
UCS-A /system #
```

NEW QUESTION 303

Which two statements about the process of performing an EPLD upgrade on a Cisco MDS 9000 series Switch are true? (Choose two.)

- A. If an upgrade is interrupted, the upgrade continues after a connection is restored.
- B. The upgrade can be performed from the standby supervisor module.
- C. The active supervisor can be upgraded.
- D. Modules must be online to be upgraded.
- E. The Upgrade process disrupts only the module that is being upgraded.

Answer: DE

Explanation:

https://www.cisco.com/c/en/us/td/docs/switches/datacenter/mds9000/sw/8_x/release_notes/epld/epld_rn_8x.htm Graphical user interface, text, application, email Description automatically generated

"On a Cisco Nexus 9500 platform switch that has two supervisor modules, upgrade the EPLDs for the standby supervisor and then switch the active supervisor to the standby mode to upgrade its EPLDs. The supervisor switchover is not disruptive to traffic on Cisco Nexus 9500 platform switches. On a switch that has only one supervisor module, you can upgrade the active supervisor, but this will disrupt its operations during the upgrade."

Guidelines and Limitations

When you upgrade or downgrade the EPLDs, observe the following guidelines and limitations:

- You can upgrade each module only when it is online. The EPLD upgrade is only disruptive to the module being upgraded.
- If you interrupt an EPLD upgrade or downgrade, the module must be upgraded again.
- In Cisco MDS 9000 Director Switches, EPLD upgrade or downgrade can only be executed from the active supervisor module. To upgrade the supervisor EPLDs nondisruptively, upgrade the standby supervisor and then switchover. After the new standby supervisor is online its EPLDs can be upgraded.
- In Cisco MDS 9000 Series Fabric Switches, be sure to specify 1 as the module number. The switch must be power cycled for the EPLDs to start running the new code.

Under Installation guidelines. https://www.cisco.com/c/en/us/td/docs/switches/datacenter/nexus9000/sw/92x/epld-rn/nxos_n9K_epldRN_924.html

NEW QUESTION 307

Refer to the exhibit.

```
switch# show install all impact epld n9000-epld.9.2.1.img
Compatibility check:
Module      Type      Upgradable  Impact      Reason
-----
1           SUP        YES         disruptive   Module Upgradable

Retrieving EPLD versions... Please wait.

Images will be upgraded according to following table:
Module  Type  EPLD      Running-Version  New-Version  Upg-Required
-----
1       SUP  MI FPGA   0x23             0x23         No
1       SUP  IO FPGA   0x06             0x06         No
1       SUP  MI FPGA2  0x23             0x23         No
```

A network engineer plans to upgrade the current software images of a Cisco Nexus switch. What is the impact of starting the EPLD upgrade?

- A. The switch reboots one time for the new EPLD versions to take effect.
- B. The switch reboots multiple times for the new EPLD versions to take effect.
- C. The switch skips the EPLD upgrade for each EPLD device of the switch.
- D. The switch skips the EPLD upgrade for MIFPGA and proceeds with the other EPLD devices.

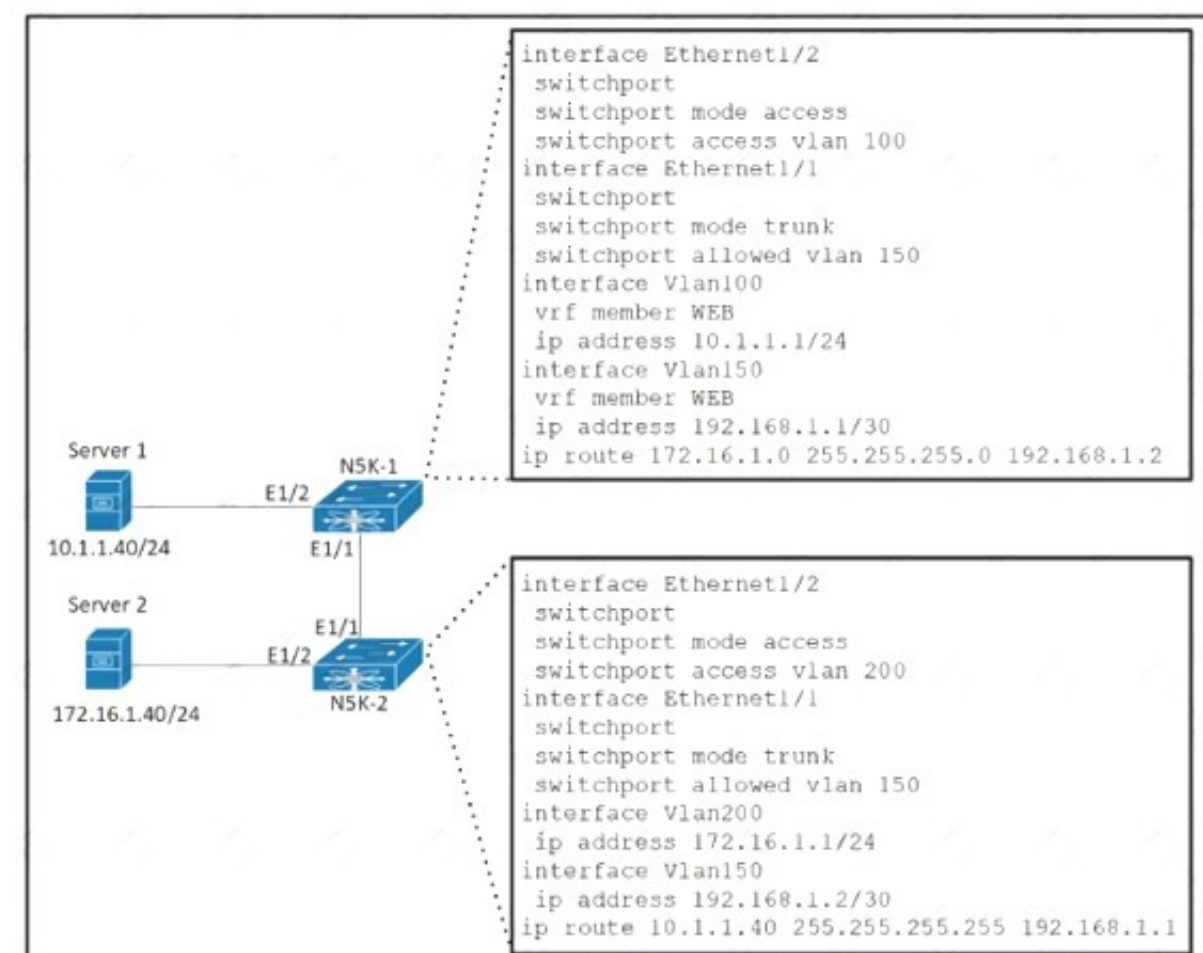
Answer: C

Explanation:

[https://www.cisco.com/c/en/us/td/docs/switches/datacenter/nexus9000/sw/92x/epld-rn/nxos_n9K_epldRN_924.](https://www.cisco.com/c/en/us/td/docs/switches/datacenter/nexus9000/sw/92x/epld-rn/nxos_n9K_epldRN_924.html)

NEW QUESTION 308

Refer to the exhibit.



The gateway of Server 1 is in the VLAN 100 SVI on N5K-1 and the gateway of Server 2 is in the VLAN 200 SVI on N5K-2. Server 1 must connect to Server 2 using unidirectional traffic. Which action accomplishes this requirement?

- A. Add VLAN 100 and 200 to the allowed VLANs list on the Ethernet 1/1 interface on N5K-1.
- B. Assign VRF WEB membership to interfaces VLAN 150 and 200 on N5K-2.
- C. Configure access VLAN 100 on interface Ethernet 1/2 on N5K-2.
- D. Create a static route in VRF WEB for the subnet of Server 2 on N5K-1.

Answer: B

NEW QUESTION 310

A network architect wants to propose a scalable network monitoring solution in which data is repeatedly acquired from network devices. The solution must use a push model and provide close to realtime access to operational data. Which technology must be used to meet these requirements?

- A. streaming telemetry
- B. logging
- C. SNMPv3
- D. CLI-based scripting

Answer: A

Explanation:

<https://blogs.cisco.com/developer/its-time-to-move-away-from-snmp-and-cli-and-use-model-driven-telemetry>

Why Model-Driven Telemetry?

Model-Driven Telemetry is a new approach for network monitoring in which data is streamed from network devices continuously using a push model and provides near real-time access to operational statistics. You can precisely define what data you want to subscribe to using standard YANG models (YANG is a data modeling language used to model configuration and state data manipulated by the NETCONF protocol) with no CLI required. It allows network devices to continuously stream real time configuration and operating state information to subscribers. Structured data is published at a defined cadence, or on-change, based upon the subscription criteria and data type.

NEW QUESTION 313

Which two configuration settings are available in the in the cisco UCS firmware Auto sync server policy?

- A. User Notification
- B. User Acknowledge
- C. No Action
- D. Delayed Action
- E. Immediate Action

Answer: BC

Explanation:

https://www.cisco.com/c/en/us/td/docs/unified_computing/ucs/sw/firmware-mgmt/gui/2-2/b_GUI_Firmware_M Following are the values for the Firmware Auto Sync Server policy:

- User Acknowledge—Firmware on the server is not synchronized until the administrator acknowledges the upgrade in the Pending Activities dialog box.
- No Action—No firmware upgrade is initiated on the server.

NEW QUESTION 316

A host EPG Client wants to talk to a webserver in EPG Web. A contract with default settings is defined between EPG Client and EPG Web, which allows TCP communication initiated by the client toward the webserver with TCP destination port 80. Which statement is true?

- A. If EPG Web is made a preferred group member, a contract between EPG Client and EPG Web is no longer required for the host in EPG Client to reach the webserver in EPG Web.
- B. If vzAny is configured to consume and provide a "deny all" contract, traffic between EPG Client and EPG Web is no longer allowed.
- C. The host in EPG Client is allowed to connect to TCP destination port 80 on the webserver in EPG Web. The webserver will not be allowed to initiate a separate TCP connection to a host port with TCP source port 80.
- D. The host in EPG Client is allowed to connect to TCP destination port 80 on the webserver in EPG Web. The webserver is allowed to initiate a separate TCP connection to a host port with TCP source port 80.

Answer: D

Explanation:

Apply Both Direction and Reverse Filter Port in the subject for the filter. These two options are by default enabled... This means that if the provider EPG initiates traffic toward the consumer EPG, the Cisco ACI fabric allows it for any destination ports if the source port is 80.

https://www.cisco.com/c/en/us/td/docs/switches/datacenter/aci/apic/sw/1-x/Operating_ACI/guide/

[b_Cisco_Operating_ACI/b_Cisco_Operating_ACI_chapter_01000.html](https://www.cisco.com/c/en/us/td/docs/switches/datacenter/aci/apic/sw/1-x/Operating_ACI/guide/b_Cisco_Operating_ACI/b_Cisco_Operating_ACI_chapter_01000.html) Reverse filter and apply in both directions is default.

If a filter allows traffic from any consumer port to a provider port (e.g. 8888), if reverse port filtering is enabled and the contract is applied both directions (say for TCP traffic), either the consumer or the provider can initiate communication. The provider could open up a TCP socket to the consumer using port 8888, whether the provider or consumer sent traffic first. https://www.cisco.com/c/en/us/td/docs/switches/datacenter/aci/apic/sw/1-x/Operating_ACI/guide/b_Cisco_Operating_ACI/b_Cisco_Operating_ACI_chapter_01000.html

NEW QUESTION 318

Which two actions should be taken before an upgrade is started on a Cisco MDS switch? (Choose two.)

- A. check the impact of the upgrade using the show install all impact command
- B. disable Cisco Fabric Services
- C. back up the configuration
- D. free up space on the USB3 device by deleting old Cisco NX-OS image files
- E. make the primary supervisor the active supervisor

Answer: AC

Explanation:

https://www.cisco.com/c/en/us/td/docs/switches/datacenter/mds9000/sw/5_2/upgrade/guides/nx-os/upgrade.html

NEW QUESTION 319

Refer to the exhibit.

```
monitor fabric session mySession
description "This is my fabric ERSPAN session"
destination tenant t1 application appl epq epq1 destination-ip 192.0.20.123 source-ip-prefix 10.0.20.1
erspan-id 100
ip dscp 42
ip ttl 16
mtu 9216
exit
source interface eth 1/1 switch 101
direction tx
filter tenant t1 bd bdl
filter tenant t1 vrf vrfl
no shut
```

An engineer needs to implement a monitoring session that should meet the following requirements:

- Monitor traffic from leaf to leaf switches on a Cisco ACI network
- Support filtering traffic from Bridge Domain or VRF

Which configuration must be added to meet these requirements?

- A. interface eth 1/2 switch 101
- B. interface eth 1/2 leaf 101
- C. filter tenant t1 application app1 epq epq1
- D. application epq epq1 app1

Answer: C

NEW QUESTION 323

Which server policy is used to install new Cisco IMC software on a server?

- A. host firmware policy
- B. hypervisor firmware policy

- C. BIOS software policy
D. Cisco IMC software policy

Answer: A

Explanation:

[https://www.cisco.com/c/en/us/td/docs/unified_computing/ucs/ucs-manager/CLI-User-Guides/Firmware-](https://www.cisco.com/c/en/us/td/docs/unified_computing/ucs/ucs-manager/CLI-User-Guides/Firmware-Mgmt/4-0/b_UCSM_CLI_Firmware_Management_Guide_4-0/b_UCSM_CLI_Firmware_Management_Guide_4-0_chapter_01.html#)

[Mgmt/4-0/b_UCSM_CLI_Firmware_Management_Guide_4-0/ b_UCSM_CLI_Firmware_Management_Guide_4-0_chapter_01.html#](https://www.cisco.com/c/en/us/td/docs/unified_computing/ucs/ucs-manager/CLI-User-Guides/Firmware-Mgmt/4-0/b_UCSM_CLI_Firmware_Management_Guide_4-0/b_UCSM_CLI_Firmware_Management_Guide_4-0_chapter_01.html#)

You can use host firmware packages by defining a host firmware policy as an attribute of a service profile template, which is an updating template. Any change made to the service profile template is automatically made to its instantiated service profiles. Subsequently, the servers associated with the service profiles are also upgraded in parallel with the firmware version.

Graphical user interface, text, application Description automatically generated

The Cisco UCS domains are categorized into domain groups in Cisco UCS Central for management purposes. You can manage firmware for each domain group separately at the domain group level or for all domain groups from the domain group root. Cisco UCS Central provides you the option to manage the following Cisco UCS domain firmware packages:

- **Capability Catalog**— One capability catalog per domain group. All Cisco UCS domains registered to a particular domain group will use the capability catalog defined in the domain group.
- **Infrastructure Firmware**— One infrastructure firmware policy per domain group . All Cisco UCS domains registered to a particular domain group will use the same Infrastructure firmware version defined in the domain group.
- **Host Firmware**— You can have more than one **host firmware policy** for the different host firmware components in a domain group. The Cisco UCS domains registered in the domain group will be able to choose any defined **host firmware policy** in the group. Cisco UCS Central provides you the option to upgrade the host firmware globally to all Cisco UCS domains in a domain group at the same time.



Note

For more information on managing firmware in Cisco UCS Central, see the Firmware Management chapters in the *Cisco UCS Central Administration Guide* and *Cisco UCS Central CLI Reference Manual*.

NEW QUESTION 326

Drag and drop the storage technologies from the left onto the correct descriptions on the right.

NFSv2	uses client machine authentication
Kerberos	uses users authentication
NFSv4	authenticates clients and servers in NFSv4
RADIUS	authenticates clients to corporate directory systems

- A. Mastered
B. Not Mastered

Answer: A

Explanation:

Application Description automatically generated

The release of NFSv4 brought a revolution to authentication and security to NFS exports. NFSv4 mandates the implementation of the RPCSEC_GSS kernel module, the Kerberos version 5 GSS-API mechanism, SPKM-3, and LIPKEY. With NFSv4, the mandatory security mechanisms are oriented towards authenticating individual users, and not client machines as used in NFSv2 and NFSv3. https://web.mit.edu/rhel-doc/5/RHEL-5-manual/Deployment_Guide-en-US/s1-nfs-security.html

NEW QUESTION 329

An engineer must configure the remote SSH management connectivity for Cisco Nexus 9000 Series Switches to meet these requirements

- The connectivity must be permitted from a jump host with an IP address of 10.10.10.10/24
- All switches must be permitted to connect via SSH to other devices from the subnet of 10.20.20.0/24. Which configuration set accomplishes these requirements?

- ☒ line vty
 ip access-class acl-1 out
 ip access-class acl-2 in
- ip access-list acl-1
 permit ip 10.10.10.10/32 any
 ip access-list acl-2
 permit tcp 10.20.20.0/32 any
- ☐ line vty
 ip access-class acl-1 in
 ip access-class acl-2 out
- ip access-list acl-1
 permit tcp 10.10.10.10/32 any eq 22
 ip access-list acl-2
 permit tcp 10.20.20.0/24 any
- ☐ line vty
 ip access-class acl-1 in
 ip access-class acl-2 in
- ip access-list acl-1
 permit ip 10.10.10.10/32 any
 ip access-list acl-2
 permit tcp 10.20.20.0/32 any
- ☐ line vty
 ip access-class acl-1 in
 ip access-class acl-2 in
- ip access-list acl-1
 permit tcp 10.10.10.10/32 any eq 22
 ip access-list acl-2
 permit tcp 10.20.20.0/24 any

- A. Option A
 B. Option B
 C. Option C
 D. Option D

Answer: B

NEW QUESTION 330

Which behavior defines streaming telemetry as a push model in Cisco devices?

- A. Monitoring clients are pulling data from the network to see real-time statistics
 B. JSON encoded telemetry data is transported using the gRPC protocol
 C. The network devices send data in JSON or GPB format to configured endpoints
 D. Events and network changes generate telemetry data

Answer: D

Explanation:

<https://developer.cisco.com/docs/ios-xe/#!streaming-telemetry-quick-start-guide/streaming-telemetry>

NEW QUESTION 333

Which communication method does NFS use for requests between servers and clients?

- A. XDR
 B. SSC
 C. PRC
 D. SMB

Answer: C

Explanation:

<https://www-uxsup.csx.cam.ac.uk/pub/doc/redhat/WS2.1/rhl-rg-en-7.2/ch-nfs.html>

NEW QUESTION 336

A network architect must redesign a data center on OSPFv2. The network must perform fast reconvergence between directly connected switches. Which two actions must be taken to meet the requirement? (Choose two)

- A. Configure all links on AREA 0.
 B. Implement a virtual link between the switches.
 C. Use OSPF point-to-point links only.
 D. Set low OSPF hello and DEAD timers.

E. Enable BFD for failure detection.

Answer: CD

NEW QUESTION 340

An engineer must configuration a backup and restore of Cisco UCS Manager during the weekend maintenance windows. The configuration must be restored to its original state on Monday morning. The end users can make changes only to the Service Profile configuration. Which set of actions meets these requirements?

- A. Schedule a system backup to run at the start of every weekend and manually import the backup on Monday morning.
- B. Schedule a system backup to run at the start of every weekend and schedule the import of the backup to run on Monday morning
- C. Schedule a logical backup to run at the start of every weekend and manually import the backup on Monday morning.
- D. Schedule a logical backup to run at the start of every weekend and schedule the import of the backup to run on Monday morning.

Answer: B

NEW QUESTION 341

A POAP-enabled Cisco Nexus switch will not enter POAP mode. Which two conditions should be verified? (Choose two.)

- A. Bootflash must contain a special directory named POAP with poap.py file.
- B. The switch is in bootup process.
- C. No startup configuration is available.
- D. The license file is missing on the switch.
- E. No Cisco NX-OS image is present on the bootflash.

Answer: BC

Explanation:

POAP is an automatic provisioning and zero-touch deployment feature that assists device owners in the initial deployment and configuration of Nexus switches. The feature works by checking for a local configuration script. If the script has been deleted, the switch has been reset to factory settings, or this is the first boot-up, the POAP daemon will connect to a preset list of servers to download an initial configuration file.

To perform this operation, the switch must first obtain an IP address from a local DHCP server. POAP configuration settings can also be passed through the DHCP response.

Which conditions should be verified, so they need to be TRUE. Like no startup (A) and bootup (B). C means that it needs to miss a license file and E means it needs to miss an NX-OS image.

NEW QUESTION 346

An engineer is implementing NetFlow on a Cisco Nexus 7000 Series Switch. Drag and drop the NetFlow commands from the left into the correct order they must be entered on the right.

N7K-1(config)# interface <interface> N7K-1(config-if)# ip flow monitor NetflowMonitor input	Step 1
N7K-1(config)# feature netflow	Step 2
N7K-1(config)# flow exporter NetflowMonitor N7K-1(config)# flow record NetflowMonitor	Step 3
N7K-1(config)# flow monitor NetflowMonitor	Step 4

- A. Mastered
- B. Not Mastered

Answer: A

Explanation:

- 1- feature netflow
- 2- flow exporter
- 3- flow monitor
- 4- interface<interface>

NEW QUESTION 351

An engineer implements an ACI fabric and must implement microsegmentation of endpoints within the same IP subnet using a network-based attribute. The attribute mapping must allow IP subnet independence. Which attribute must be selected?

- A. MAC address
- B. Custom
- C. Tag
- D. IP

Answer: D

Explanation:

If you want to use a network-based attribute and classify IP addresses in the same subnet, you must use the MAC-based network attribute. IP-based microsegmented EPGs do not support classification for IP addresses in the same subnet.

https://www.cisco.com/c/en/us/td/docs/switches/datacenter/aci/apic/sw/3-x/virtualization/b_ACI_Virtualization_

NEW QUESTION 355

An engineer must use the Embedded Event Manager to monitor events that occur on a cisco Nexus 9000 series switch. An environment variable needs to be created so that several policies use the monitored events in their actions. The external email server is represented by IP address 10.10.10.10. which command sets the environment variable?

- A. N9k2(config)# event manager policy environment mallserver "10.10.10.10"
- B. N9k2# event manager environment mallserver "10.10.10.10"
- C. N9k2 (config-apple1)# environment mallserver "10.10.10.10"
- D. N9k2 (config)# event manager environment mallserver "10.10.10.10"

Answer: D

Explanation:

To set an Embedded Event Manager (EEM) environment variable, use the event manager environment command in global configuration mode. To disable an EEM environment variable, use the no form of this command. <https://www.cisco.com/c/en/us/td/docs/ios-xml/ios/eem/command/eem-cr-book/eem-cr-e1.html>

NEW QUESTION 357

Refer to the exhibit.

```
show incompatibility-all system bootflash:n7000-s1-dk9.4.2.4.bin
```

Software downgrade is required on a Cisco Nexus 7000 Series Switch. What is displayed when this command is executed?

- A. features and commands that are removed automatically from the configuration
- B. features that are enabled automatically after the downgrade
- C. compatibility of software in the system bootflash file
- D. impact of a software upgrade in ISSU and chassis reload

Answer: A

NEW QUESTION 360

What is a benefit of independent resource scaling in Cisco HyperFlex hybrid architecture?

- A. flexible expansion of compute, caching, and capacity
- B. remote booting of converged servers
- C. multivendor converged node hardware support
- D. support for compute nodes with third-party storage

Answer: D

NEW QUESTION 363

An engineer is seeking the most optimal on demand CPU performance while configuring the BIOS settings of a UCS C-series rack mount server. What setting will accomplish this goal?

- A. C0/C1 state
- B. C6 Retention
- C. C2 state
- D. C6 non-Retention

Answer: B

NEW QUESTION 364

An engineer is asked to use SaaS to manage Cisco computing. Which two items are needed to accomplish the task? (Choose two.)

- A. UCS Manager
- B. Node name/Serial Number
- C. Device/Claim ID
- D. UCS Central
- E. Intersight

Answer: AE

Explanation:

<https://www.cisco.com/c/en/us/products/collateral/cloud-systems-management/intersight/intersight-ds.html>

NEW QUESTION 367

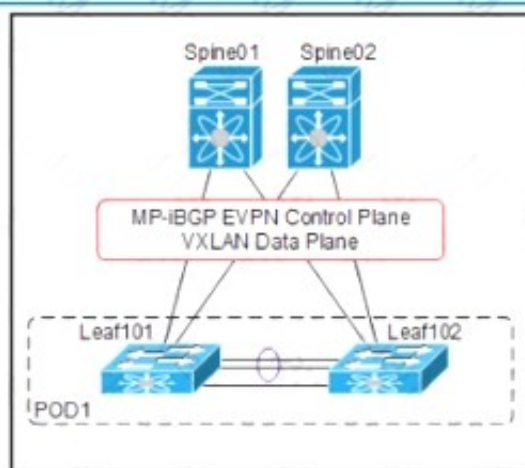
An engineer is configuring a vHBA template in Cisco UCS Manager. The engineer needs to specify the logical addresses used by the vHBA and the path through which the SAU Traffic flows. Which two resources must be specified in the vHBA template? (Choose two)

- A. WWIN
- B. VLAN ID
- C. Fabric ID
- D. MAC addresses
- E. WWVPN Pool

Answer: AE

NEW QUESTION 369

Refer to the exhibit.



```
SPINE-01#show run pim
ip pim rp-address 10.255.0.100 group-list 225.0.0.0/8
ip pim bsr rp-candidate loopback1 group-list 225.0.0.0/8
ip pim ssm range 232.0.0.0/8
ip pim anycast-rp 10.255.0.100 10.10.0.1
ip pim anycast-rp 10.255.0.100 10.10.0.2
!
!
SPINE-01#show run interface loopback1
interface loopback1
ip router ospf 1 area 0.0.0.0
ip pim sparse-mode
```

An engineer must implement VXLAN with anycast gateway. To accomplish this, an engineer must set up PIM Source-Specific Multicast for host reachability. Which IP address must be applied to interface loopback1 to accomplish this goal?

- A. 255.0.0.1/8
- B. 255.0.100
- C. 10.10.0.1/32
- D. 10.10.0.2/32

Answer: B

NEW QUESTION 370

What is the benefit of adding Cisco HyperFlex Hardware Acceleration Cards to a HyperFlex deployment?

- A. offline encryption acceleration
- B. increased network throughput
- C. GPU acceleration
- D. Increased compression efficiency

Answer: D

Explanation:

- Additional Information on HyperFlex Hardware Acceleration Cards

Overview of HyperFlex Hardware Acceleration Cards

This chapter provides details for installation, post-installation, and troubleshooting of HyperFlex Hardware Acceleration Cards (PID: HX-PCIE-OFFLOAD-1) on HyperFlex nodes and for configuring your initial cluster. These cards provide improved performance and compression efficiency for most storage workloads.



Note

An HXDP-P Enterprise license is required for installing and configuring HyperFlex Hardware Acceleration Cards.

https://www.cisco.com/c/en/us/td/docs/hyperconverged_systems/HyperFlex_HX_DataPlatformSoftware/Installation_VMware_ESXi/3_5/b_HyperFlexSystems_Installation_Guide_for_VMware_ESXi_3_5/b_HyperFlexSystems_Installation_Guide_for_VMware_ESXi_3_5_chapter_01100.html#:~:text=Overview%20of%20HyperFlex%20Hardware%20Acceleration%20Cards,-This%20chapter%20provides&text=These%20cards%20provide%20improved%20performance%20and%20compression%20efficiency%20for%20most%20storage%20workloads.

NEW QUESTION 373

An engineer must allow communication between the APIC controller and an OpenStack OpFlex agent. The agent is running on a compute node directly plugged to a Cisco ACI leaf switch. The engineer must enable and extend Infra VLAN on the port facing the compute and extend the Infra VLAN to the host. Which action must be taken to meet these requirements?

- A. Enable the Infra VLAN on the Interface Profile policy
- B. Enable the Infra VLAN on the Attachable Access Entity Profile.
- C. Add the infra VLAN via the physical domain.
- D. Add the infra VLAN via the VMM domain.

Answer: C

NEW QUESTION 375

Refer to the exhibit.

```
int fcl/1-2
switchmode rate dedicated
channel-group 100 force
no shut

int san-port-channel 100
switchport trunk allowed vsan 1
switchport trunk allowed vsan add 100
```

An engineer is connecting a Cisco MDS 9700 Series Multilayer Director to a downstream Cisco Nexus 5672UP switch. Which command set must be used to complete the configuration?

A)

```
int san-port-channel 100
switchport mode te
switchport trunk mode off
channel mode on
```

B)

```
int san-port-channel 100
switchport mode te
switchport trunk mode auto
channel mode on
```

C)

```
int san-port-channel 100
switchport mode e
switchport trunk mode on
channel mode active
```

D)

```
int port-channel 100
switchport mode e
switchport trunk mode on
channel mode active
```

- A. Option A
- B. Option B
- C. Option C
- D. Option D

Answer: A

NEW QUESTION 379

An engineer is converting a Cisco MDS switch to support NPIV mode. What should be considered when implementing the solution?

- A. It must be enabled on VSAN 1 only.
- B. It must be enabled globally on all VSANs.
- C. It requires mapping of external interface traffic.
- D. It requires the FLOGI database to be disabled.

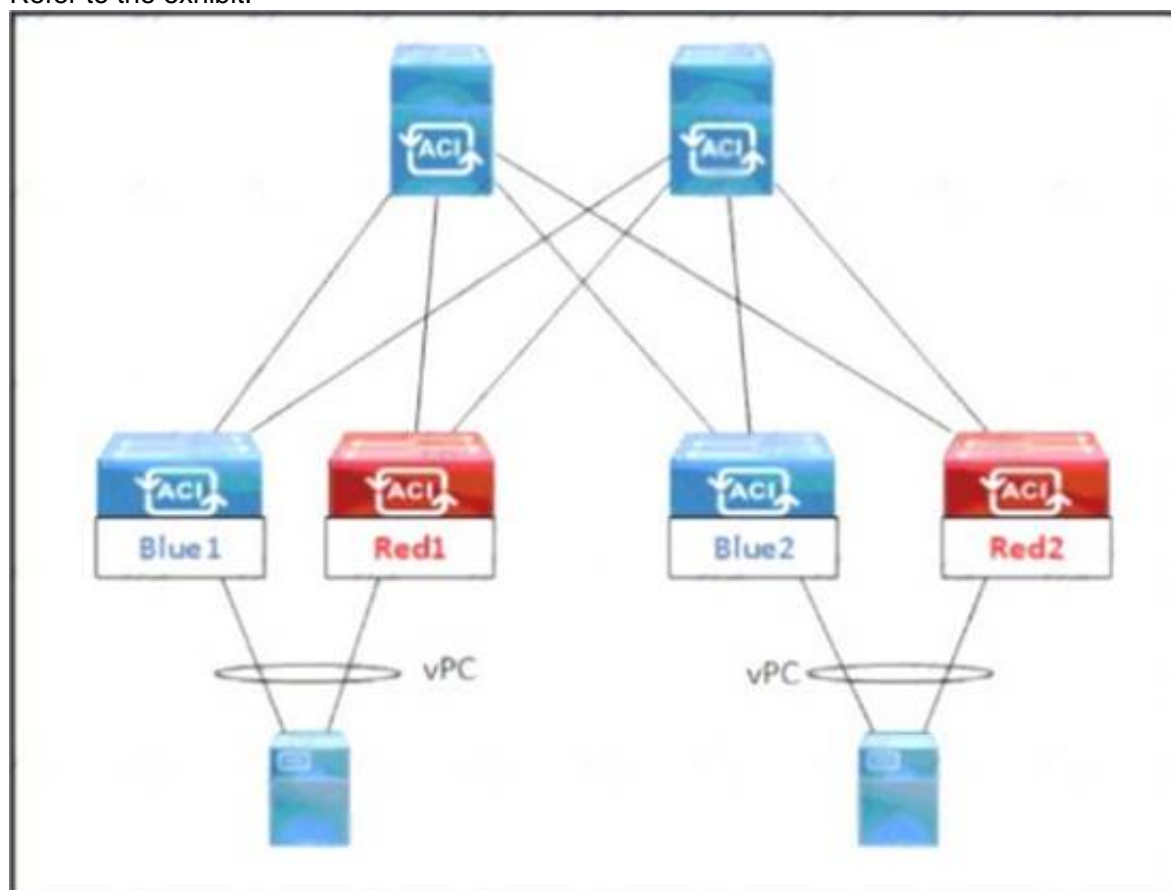
Answer: B

Explanation:

https://www.cisco.com/c/en/us/td/docs/switches/datacenter/mds9000/sw/5_0/configuration/guides/int/nxos/cli_i

NEW QUESTION 380

Refer to the exhibit.



An engineer must schedule the firmware upgrade of the Red1 and Red2 leaf switches. The requirement is to keep the upgrade time to the minimum, avoid any service impact, and perform the parallel upgrade Which set of scheduler attributes must be used to meet these requirements?

- ☐ • Configure SchedulerPolicy1 for all four leaf switches Blue1, Blue2, Red1, and Red2.
 • Configure SchedulerPolicy1 and SchedulerPolicy2 with a one-time window trigger that has maximum concurrent nodes 1.
- ☐ • Configure SchedulerPolicy1 for leaf switches Blue1 and Red1, and SchedulerPolicy2 for leaf switches Blue2 and Red2.
 • Configure SchedulerPolicy1 and SchedulerPolicy2 with a one-time window trigger that has maximum concurrent nodes 2.
- ☐ • Configure SchedulerPolicy1 for all four leaf switches Blue1, Blue2, Red1, and Red2.
 • Configure SchedulerPolicy1 and SchedulerPolicy2 with a one-time window trigger that has maximum concurrent nodes 2.
- ☐ • Configure SchedulerPolicy1 for leaf switches Blue1 and Red1, and SchedulerPolicy2 for leaf switches Blue2 and Red2.
 • Configure SchedulerPolicy1 and SchedulerPolicy2 with a one-time window trigger that has maximum concurrent nodes 1.

- A. Option A
- B. Option B
- C. Option C
- D. Option D

Answer: D

NEW QUESTION 382

An engineer is configuring a backup operation on the existing Cisco UCS environment using a logical configuration. Which configuration is expected to be saved by using this backup type?

- A. systems
- B. roles
- C. service profiles
- D. servers

Answer: C

Explanation:

Graphical user interface, text, application, email Description automatically generated

- [Import Operations](#)
- [Restoring the Configuration for a Fabric Interconnect](#)

Backup and Export Configuration

When you perform a backup through Cisco UCS Manager, you take a snapshot of all or part of the system configuration and export the file to a location on your network. You cannot use Cisco UCS Manager to back up data on the servers.

You can perform a backup while the system is up and running. The backup operation only saves information from the management plane. It does not have any impact on the server or network traffic.

Backup Types

You can perform one or more of the following types of backups through Cisco UCS Manager:

- **Full state**—A binary file that includes a snapshot of the entire system. You can use the file generated from this backup to restore the system during disaster recovery. This file can restore or rebuild the configuration on the original fabric interconnect, or recreate the configuration on a different fabric interconnect. You cannot use this file for an import.
- **All configuration**—An XML file that includes all system and logical configuration settings. You can use the file generated from this backup to import these configuration settings to the original fabric interconnect or to a different fabric interconnect. You cannot use this file for a system restore.
- **System configuration**—An XML file that includes all system configuration settings such as usernames, roles, and locales. You can use the file generated from this backup to import these configuration settings to the original fabric interconnect or to a different fabric interconnect. You cannot use this file for a system restore.
- **Logical configuration**—An XML file that includes all logical configuration settings such as service profiles, VLANs, VSANs, pools, and policies. You can use the file generated from this backup to import these configuration settings to the original fabric interconnect or to a different fabric interconnect. You cannot use this file for a system restore.

Considerations and Recommendations for Backup Operations

https://www.cisco.com/en/US/docs/unified_computing/ucs/sw/gui/config/guide/141/UCSM_GUI_Configuration_Guide_141_chapter43.html

NEW QUESTION 386

A network engineer must configure a Fibre Channel interface on the Cisco MDS 9000 Series Switch. The configuration must meet these requirements:

- The interface must be disabled when the bit errors threshold is exceeded.
- Buffer-to-buffer credits must be set to the maximum value.
- The interface must have full bandwidth allocated for its port group.

Which command set configures a Fibre Channel interface that meets these requirements?

- A.
- ```
interface fc1/1
switchport bit-errors
switchport fcrxbbcredit 220 mode Fx
switchport rate-mode dedicated
```
- B.
- ```
interface fc1/1
switchport ignore bit-errors
switchport fcrxbbcredit 255 mode Fx
no switchport rate-mode
```
- C.
- ```
interface fc1/1
no switchport ignore bit-errors
switchport fcrxbbcredit 255 mode Fx
switchport rate-mode dedicated
```
- D.
- ```
interface fc1/1
no switchport bit-errors
switchport fcrxbbcredit 220 mode Fx
no switchport rate-mode
```

Answer: A

NEW QUESTION 389

Drag and drop the characteristics from the left onto the NAS protocols on the right. Some characteristics are used more than once.

- used to boot VHDX files
- used to boot VMDK files
- uses lease-based model for file locking
- used to provide shared storage for hypervisors

NFS

SMB/CIFS

- A. Mastered
- B. Not Mastered

Answer: A

Explanation:

Diagram Description automatically generated

NFS:

- Used to boot VMDK files
 - Uses lease-based model for file locking
 - Used to provide shared storage for hypervisors
- SMB/CIFS:
- Used to boot VHDX files
 - Used to provide shared storage for hypervisors

NEW QUESTION 391

A network administrator must create a Linux container on a Cisco Nexus Series Switch. The container requires 10 percent of the CPU of the switch and 1024 MB of RAM to run successfully. Which task provides the necessary resources?

- A. Edit the container properties with the guestshell run command.
- B. Increase the compute resources with the guestshell resize command.
- C. Enable the Bash shell of the switch with the feature bash command
- D. Modify resource allocation with the virtual-service resize command.

Answer: B

NEW QUESTION 392

Refer to the exhibit.

```
NEXUS# configure terminal
NEXUS# locator-led fex 100
NEXUS(config)# feature fex
NEXUS(config)# fex 100
NEXUS(config-fex)# type N2232TM
NEXUS(config-fex)# serial JAF1427BQLG
NEXUS(config)# interface ethernet 1/24-32
NEXUS(config-if)# switchport
NEXUS(config-if)# switchport mode fex-fabric
NEXUS(config-if)# fex associate 100
NEXUS(config-if)# no shutdown

NEXUS # show fex 100 detail
FEX: 100 Description: FEX0100 state: Online
  FEX version: 5.0(2)N1(1) [Switch version: 5.0(2)N1(1)]
  FEX Interim version: 5.0(2)N1(0.205)
  Switch Interim version: 5.0(2)N1(0.205)
  Extender Model: N2K-C2232TM, Extender Serial: JAF1427BQLG
  Part No: 73-13373-01
  Card Id: 132, Mac Addr: 68:ef:bd:62:2a:42, Num Macs: 64
  Module Sw Gen: 21 [Switch Sw Gen: 21]
  post level: complete
  pinning-mode: static   Max-links: 1
  Fabric port for control traffic: Eth1/29
  Fabric interface state:
    Eth1/25 - Interface Up. State: Active
    Eth1/26 - Interface Up. State: Active
    Eth1/27 - Interface Up. State: Active
    Eth1/28 - Interface Up. State: Active
    Eth1/29 - Interface Up. State: Active
    Eth1/30 - Interface Up. State: Active
    Eth1/31 - Interface Up. State: Active
    Eth1/32 - Interface Up. State: Active
```

An engineer must distribute all the host ports to use all eight configured FEX uplinks. The solution must minimize disruption if an uplink fails Which action accomplishes this objective?

- A. Set the pinning max-links value to 8
- B. Statically assign each host interface to a fabric uplink
- C. Change the supported FEX type
- D. Configure the eight uplinks in a port channel

Answer: D

Explanation:

Traffic disruption should be minimised when an uplink fails. If pinning was used and an uplink failed, then traffic associated with the failed link would be disrupted until it could be re-routed. Using a port-channel is much less disruptive.

NEW QUESTION 397

A company plans to deploy a Cisco HyperFlex solution for data-intensive applications and databases. The proposed solution should offer the highest performance with high consistency and low latency. Which Cisco HyperFlex storage configuration should be used?

- A. All-HDD
- B. All-NVMe
- C. All-Flash
- D. Hybrid

Answer: B

NEW QUESTION 401

An engineer is implementing security on the Cisco MDS 9000 switch. Drag drop the descriptions from the left onto the correct security features on the right.

can be distributed via fabric services	Fabric Binding
uses the Exchange Fabric Membership Data protocol	Target 1
allows a preconfigured set of Fibre Channel devices to logically connect to SAN ports	Target 2
prevent unauthorized switches from joining the fabric or disrupting current fabric operations	Port Security
	Target 3
	Target 4

- A. Mastered
- B. Not Mastered

Answer: A

Explanation:

can be distributed via fabric services	Fabric Binding
uses the Exchange Fabric Membership Data protocol	prevent unauthorized switches from joining the fabric or disrupting current fabric operations
allows a preconfigured set of Fibre Channel devices to logically connect to SAN ports	uses the Exchange Fabric Membership Data protocol
prevent unauthorized switches from joining the fabric or disrupting current fabric operations	Port Security
	can be distributed via fabric services
	allows a preconfigured set of Fibre Channel devices to logically connect to SAN ports

NEW QUESTION 402

Refer to the exhibit.

```
import time
import cli

date= time.strftime('%Y%m%d')
file= ('fusion-config_') + date
cli.execute ('copy running-config ftp://10.183.249.182/fusionSW/' + file)
exit()
```

What is the result of executing this python code?

- A. It backs up Cisco switches to Cisco Prime infrastructure.
- B. It sends the switch configuration to Cisco TAC.
- C. It sends a Cisco device backup to a remote destination.
- D. It schedules a backup on a Cisco switch using EEM.

Answer: C

NEW QUESTION 407

A customer asks an engineer to develop an orchestration solution to automate repetitive tasks. The customer operations team must integrate the tool with its

existing automation framework. The customer asks for the tool to support these requirements:

- The customer's security requirements mandate the use of SSH transport.
 - No extra software must be installed on the managed systems.
 - The support staff has limited knowledge of scripting languages, so the solution must be easy to read and use declarative language.
- Which solution meets these requirements?

- A. PowerShell
- B. Ansible
- C. Chef
- D. Puppet

Answer: B

NEW QUESTION 412

An engineer has a primary fabric that is named UCS-A and a secondary fabric that is named UCS-B. A certificate request that has a subject name of sjc2016 for a keyring that is named kr2016 needs to be created. The cluster IP address is 10.68.68.68. Which command set creates this certificate request?

- A. UCS-A # scope keyring kr2016UCS-A /keyring # create certreq 10.68.68.68 sjc2016UCS-A /keyring* # commit-buffer
- B. UCS-B # scope keyring kr2016UCS-B /keyring # create certreq ip 10.68.68.68 subject-name sjc2016UCS-B /keyring* # commit-both
- C. UCS-B# scope securityUCS-B /security # scope keyring kr2016UCS-B /security/keyring # set certreq 10.68.68.68 sjc2016UCS-B /security/keyring* # commit-both
- D. UCS-A# scope securityUCS-A /security # scope keyring kr2016UCS-A /security/keyring # create certreq ip 10.68.68.68 subject-name sjc2016UCS-A /security/keyring* # commit-buffer

Answer: D

Explanation:

https://www.cisco.com/c/en/us/td/docs/unified_computing/ucs/ucs-manager/CLI-User-Guides/Admin-Management/4-0/b_Cisco_UCS_Manager_CLI_Administration_Mgmt_Guide_4-0/b_Cisco_UCS_Manager_CLI_Administration_Mgmt_Guide_4-0_chapter_0110.html

NEW QUESTION 416

What is a characteristic of the NFS protocol?

- A. It is used for booting Cisco UCS B-Series servers.
- B. It is used to access a storage array at a block level.
- C. It uses UDP and HTTP as its transport.
- D. It uses remote procedure calls with TCP/IP for transport.

Answer: D

NEW QUESTION 421

An engineer must implement a new VRF that permits communication between all endpoint groups (EPGs) by default. The new EPGs and bridge domains (BDs) that are created in the new VRF must not require additional configuration to permit traffic between the newly created EPGs or BDs. Which action accomplishes this goal?

- A. Provide and consume a permit any contract on the VRF level
- B. Create a VRF in the common tenant.
- C. Place all EPGs in the preferred group.
- D. Implement a global contract.

Answer: C

NEW QUESTION 423

A network engineer must configure a power redundancy policy on a Cisco UCS C-Series Rack Server. The power redundancy must support two power sources being used to power the server. Which configuration should be applied to meet the requirement?

- Ⓐ server# scope org /
server /org # scope psu-policy
server /org/psu-policy # set redundancy N+1
server /org/psu-policy* # commit-buffer
- Ⓑ server# scope org /
server /org # scope psu-policy
server /org/psu-policy # set psu-redundancy-policy grid
server /org/psu-redundancy-policy* # commit-buffer
- Ⓒ server# scope org /
server /org # scope psu-policy
server /org/psu-policy # set psu-redundancy-policy N+1
server /org/psu-redundancy-policy* # commit-buffer
- Ⓓ server# scope org /
server /org # scope psu-policy
server /org/psu-policy # set redundancy grid
server /org/psu-policy* # commit-buffer

- A. Option A
- B. Option B
- C. Option C
- D. Option D

Answer: D

Explanation:

https://www.cisco.com/c/en/us/td/docs/unified_computing/ucs/ucs-manager/CLI-User-Guides/Server-Mgmt/3-1 The command "N+1" is invalid. The command should be "n-plus-1"

	Command or Action	Purpose
Step 1	UCS-A# scope org org-name	Enters organization mode for the specified organization. To enter the root organization mode, type / as the org-name .
Step 2	UCS-A /org # scope psu-policy	Enters PSU policy mode.
Step 3	UCS-A /org/pSU-policy # set redundancy (grid n-plus-1 non-redund)	Specifies one of the following redundancy types: <ul style="list-style-type: none"> • grid –Two power sources are turned on, or the chassis requires greater than N+1 redundancy. If one source fails (which causes a loss of power to one or two PSUs), the surviving PSUs on the other power circuit continue to provide power to the chassis. • n-plus-1 –The total number of PSUs to satisfy non-redundancy, plus one additional PSU for redundancy, are turned on and equally share the power load for the chassis. If any additional PSUs are installed, Cisco UCS Manager sets them to a "turned-off" state. • non-redund –All installed power supplies (PSUs) are turned on and the load is evenly balanced. Only smaller configurations (requiring less than 2500W) can be powered by a single PSU. For more information about power redundancy, see the Cisco UCS 5108 Server Chassis Installation Guide.
Step 4	UCS-A /org/pSU-policy # commit-buffer	Commits the transaction to the system configuration.

NEW QUESTION 426

Refer to the exhibit.

ACI-Leaf1# show ip route vrf DATACENTER:DC
10.20.1.0/24, ubest/mbest: 1/o, attached, direct, pervasive
*via 10.0.8.65%overlay-1, [1/o], 4w3d, static
172.16.100.0/24, ubest/mbest: 1/o
*via 10.1.168.95%overlay-1, [200/5], 3w0d, bgp-132, internal, tag 132 (mpls-vpn)
172.16.99.0/24, ubest/mbest: 1/o
*via 10.0.1.14, [20/0], 3w0d, bgp-132, external, tag 200

Which two statements describe the routing table of the leaf switch? (Choose two.)

- A. The next hop 10.0.8.65 for route 10.20.1.0/24 is the TEP address of a border leaf in ACI.
- B. The next hop 10.0.1.14 for route 172.16.99.0/24 is the TEP address of a border leaf in ACI.
- C. The next hop 10.1.168.95 for route 172.16.100.0/24 is the TEP address of a border leaf in ACI.
- D. 172.16.100.0/24 is a BD subnet in ACI.
- E. 10.20.1.0/24 is a BD subnet in ACI.

Answer: CE

NEW QUESTION 431

An engineer is performing a configuration on a Cisco Nexus 5000 Series Switch. The requirement is for the current Fibre Channel IDs in VSAN 120 to be saved across reboots. The Cisco environment also must integrate with a third-party solution that requires persistent Fibre Channel IDs for the VSAN The WWN of the Cisco switch must be 33:8:00:05:30:00:16:df and its Fibre Channel ID 0x070128 Which command set meets these requirements?

- ☐ fabric-binding database vsan 120
vsan 120 wwn 33:e8:00:05:30:00:16:df fcid 0x070128
- ☐ vsan 120 wwn 33:e8:00:05:30:00:16:df fcid 0x070128
fcdomain fcid preserve vsan 120
- ☐ vsan 120 wwn 33:e8:00:05:30:00:16:df fcid 0x070128
fabric-binding activate vsan 120
purge fcdomain fcid vsan 4
- ☐ fcdomain fcid database
vsan 120 wwn 33:e8:00:05:30:00:16:df fcid 0x070128
fcdomain fcid persistent vsan 120

- A. Option A
 B. Option B
 C. Option C
 D. Option D

Answer: D

NEW QUESTION 433

Which storage protocol reduces file locks by using leasing?

- A. CIFS
 B. NFS 4
 C. NFS 3
 D. SMB

Answer: D

Explanation:

<https://www.ciscolive.com/c/dam/r/ciscolive/apjc/docs/2016/pdf/BRKCOM-1211.pdf>

- **SMB Directory Leasing**
 - Ability to cache file and directory metadata
 - Branch offices need to make less round trips to the central server

NEW QUESTION 436

An engineer must recover configuration on a Cisco MDS 9000 Series switch from a previous version that was backed up to bootflash and then verify the restoration.

Drag and drop the commands on the left to the correct order on the right.

copy bootflash:<conriguration_file> runring-config	Step 1
copy running-config startup-config	Step 2
show startup-config	Step 3
write erase	Step 4
reload	Step 5

- A. Mastered
 B. Not Mastered

Answer: A

Explanation:

Graphical user interface, text, application, email Description automatically generated

https://www.cisco.com/c/en/us/td/docs/switches/datacenter/mds9000/sw/nx-os/configuration/guides/fund/fund_nx-os_5-x/b_Cisco_MDS_9000_Series_NX-OS_Fundamentals_Configuration_Guide_Release_5-x/b_Cisco_MDS_9000_Series_NX-OS_Fundamentals_Configuration_Guide_Release_5-x_chapter_01000.html

NEW QUESTION 441

An engineer must configure an LACP port channel on two Cisco Nexus 7000 Series Switches. The interface e1/2 must be a hot-standby link that initiates negotiation with other ports Drag and drop the commands from the right onto the blanks in the configuration on the left Not all commands are used

```

configure terminal
feature 
interface Ethernet 1/2
 switchport
 channel-group 2 
interface Ethernet 1/3
 switchport
 channel-group 2 mode active
 lacp port
        
```

mode active

lacp

priority 1

mode passive

priority 65534

mode on

- A. Mastered
B. Not Mastered

Answer: A

Explanation:

```

configure terminal
feature lacp
interface Ethernet 1/2
 switchport
 channel-group 2 mode active
interface Ethernet 1/3
 switchport
 channel-group 2 mode active
 lacp port priority 1
        
```

mode active

lacp

priority 1

mode passive

priority 65534

mode on

NEW QUESTION 445

Which action must be performed before renumbering a Cisco UCS chassis?

- A. Move the chassis to new ports on fabric interconnect.
B. Re-acknowledge the chassis.
C. Decommission the chassis.
D. Run the shut and no shut command on the connected ports.

Answer: C

NEW QUESTION 448

Refer to the exhibit.

Create Boot Policy

Name

Description

Reboot on Boot Order Change ☐

Enforce vNIC/vHBA/SCSI Name ☒

Boot Mode Legacy UEFI

WARNINGS:

The type (primary/secondary) does not indicate a boot order presence.

The effective order of boot devices within the same device class (LAN/Storage/SCSI) is determined by PCIe bus scan order.

If **Enforce vNIC/vHBA/SCSI Name** is selected and the vNIC/vHBA/SCSI does not exist, a config error will be reported.

If it is not selected, the vNICs/vHBAs are selected if they exist, otherwise the vNIC/vHBA with the lowest PCIe bus scan order is used.

Local Devices

CIMC Mounted vMedia

vNICs

vHBAs

iSCSI vNICs

EFI Shell

Boot Order

Name	Order	vNIC/vH	Type	LUN No	WWN	Slot No	Boot No
No data available							

An engineer installs a new Cisco UCS B-Series server. The requirement is to install an operating system on a LUN that is provided by the Fibre Channel storage array. Which two steps must be configured in the boot policy to accomplish this goal? (Choose two.)

- A. Disable Enforce vNIC^HBA/ISCSI Name
- B. Add Local CD/DVD and SAN Boot.
- C. Configure a SAN Boot Target with a WWPN
- D. Set Boot Order to External USB and LAN Boot
- E. Create (SCSI VNICS and add Local LUN

Answer: AD

NEW QUESTION 453

Refer to the exhibit.

```
switch(config)# feature dhcp
switch(config)# ip dhcp snooping
switch(config)# service dhcp
switch(config)# ip dhcp snooping vlan 100,200,250-252
switch(config)# ip dhcp relay information option
```

Which action is taken to ensure that the relay agent forwards the DHCP BOOTREQUEST packet to a DHCP server?

- A. Configure the interface of the DHCP server as untrusted.
- B. Configure the IP address of the DHCP server.
- C. Enable the DHCP relay agent.
- D. Verify the DHCP snooping bindings.

Answer: B

Explanation:

https://www.cisco.com/c/en/us/td/docs/switches/datacenter/sw/4_0/dcnm/security/configuration/guide/sec_dcnm Text Description automatically generated

Configuring a DHCP Server Address on a VLAN Interface

You can configure a DHCP server IP address on a VLAN interface (sometimes referred to as a switched virtual interface or SVI). When an inbound DHCP BOOTREQUEST packet arrives on the VLAN interface, the relay agent forwards the packet to the IP address specified.

NEW QUESTION 457

An engineer must suggest a deployment model for a newly developed application. The engineer has a small starting budget and lacks technical knowledge and infrastructure to implement storage, operating system, and database services to support the application deployment. The engineer also needs usage data related to the service and the ability to elastically scale the deployment as customer demands grow. Which two models must be used to meet the requirements? (Choose two.)

- A. private cloud
- B. platform as a service
- C. software as a service
- D. infrastructure as a service
- E. public cloud

Answer: DE

NEW QUESTION 458

A network engineer is adding a Cisco HyperFlex data platform to the Cisco intersight management portal. Which two components are required for Intersight to claim the Cisco HyperFlex data platform? (Choose two.)

- A. device FQDN
- B. device public IP address
- C. device claim code
- D. device ID
- E. device serial number


Answer: CD

Explanation:

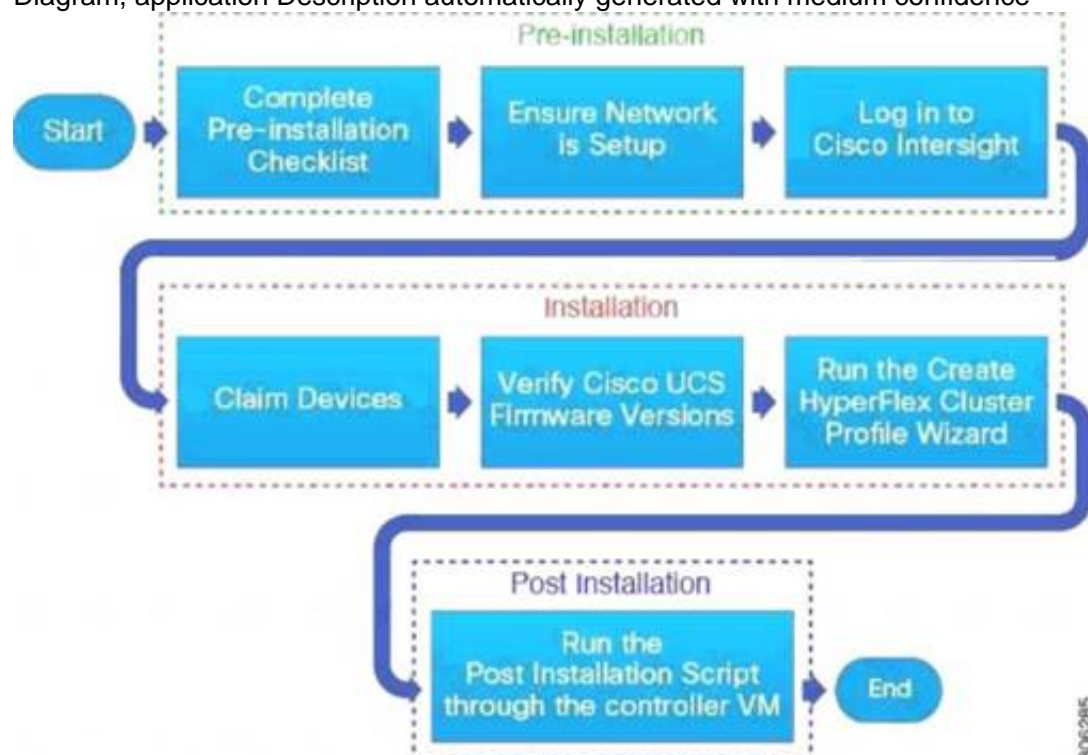
Text Description automatically generated

- Step 1** In the Cisco Intersight, left navigation pane, select **ADMIN > Targets**.
- Step 2** In the **Targets** details page, click **Claim a New Target**.
- Step 3** In the **Claim a New Target** wizard, select **Hyperconverged > Cisco HyperFlex Cluster** and complete the following fields:

- Note** You can locate the **Device ID** and the **Claim Code** information in:
- Cisco UCS Manager and Cisco IMC by navigating to **Admin > Device Connector**.
 - Cisco HyperFlex by navigating to **HyperFlex Connect UI > Settings > Device Connector**.
 - Cisco UCS Director by navigating to **Administration > Device Connector**.

UI Element	Essential Information
Device ID	<p>Enter the applicable Device ID.</p> <ul style="list-style-type: none"> For a UCS Domain, use the serial number of the primary and subordinate FIs, in this format: (Serial number of FI-A & Serial number of FI-B). Example: [SAL1924GKV6&SAL1913CJ7V] For a standalone server, use serial number. Example: NGTR12345 For HyperFlex, use Cluster UUID. Example: xxxxxxxx-xxxx-xxxx-xxxx-

Diagram, application Description automatically generated with medium confidence



https://www.cisco.com/c/en/us/td/docs/hyperconverged_systems/HyperFlex_HX_DataPlatformSoftware/HyperFlex_Installation_Guide_for_Intersight/b_HyperFlex_Installation_Guide_for_Intersight/b_HyperFlex_Installation_Guide_for_Intersight_chapter_011.html
<https://www.cisco.com/c/en/us/support/docs/hyperconverged-infrastructure/hyperflex-hx-dataplatform/214268-cisco-intersight-hyperflex-installatio.html>

NEW QUESTION 463

Which statement is true about upgrading the firmware on a Cisco MDS storage switch with dual supervisors?

- The standby supervisor must be offline before the firmware upgrade begins.
- Both supervisors load the new firmware and then the active supervisor reboots.
- Supervisors can be upgraded independently to test the new firmware.
- The new firmware is load on the standby supervisor first.

Answer: D

Explanation:

<https://www.cisco.com/c/en/us/support/docs/storage-networking/mds-9000-nx-os-san-os-software/118952-technote-mds9k-00.html#:~:text=On%20a%2095xx%20or%2097xx,becomes%20the%20new%20standby%20supervisor.>

NEW QUESTION 467

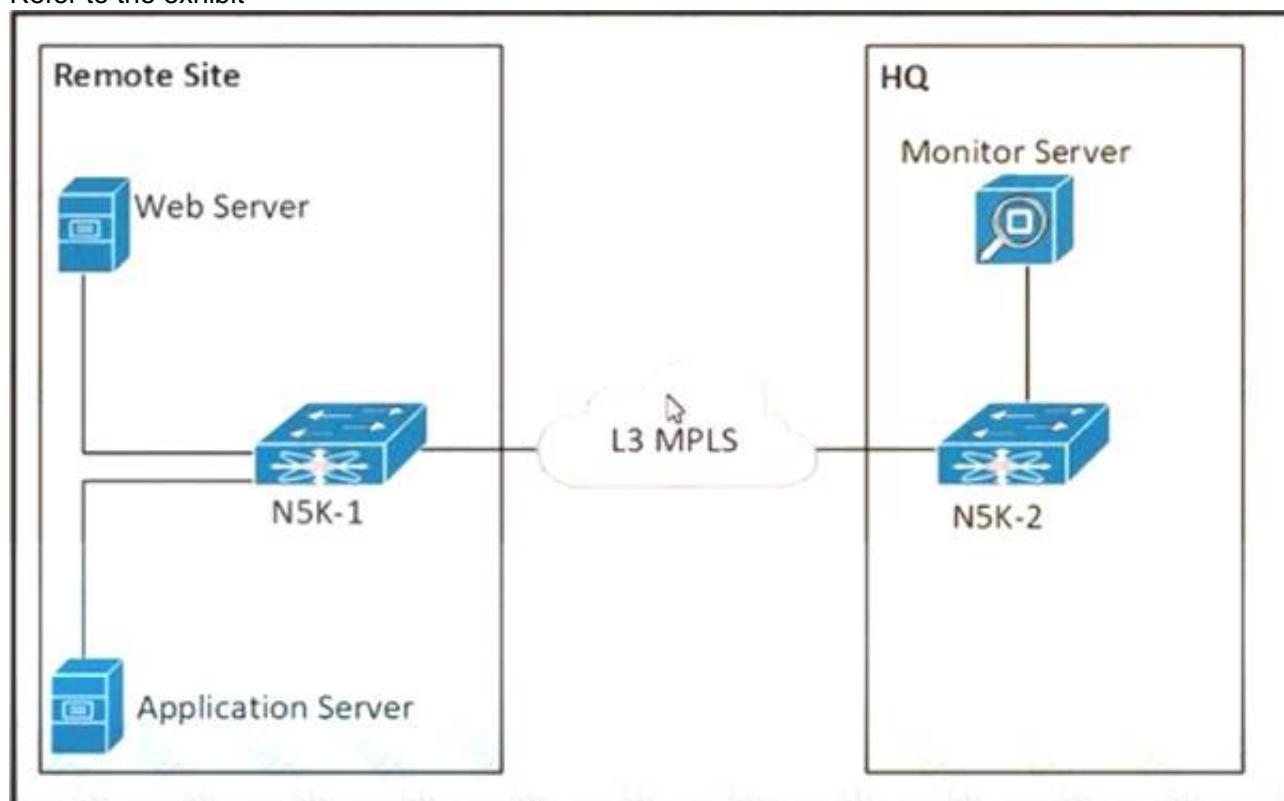
An engineer must generate a checkpoint of the running configuration on a Cisco Nexus Switch. The checkpoint file name must be called "before_maintenance" and should be used for recovering the switch to its pre- maintenance state. The rollback of the checkpoint to running configuration should only occur if no errors occur. Which two configuration commands must be used to meet these requirements? (Choose two.)

- rollback checkpoint file before_maintenance stop-at-first-failure
- rollback running-confli checkpoint before.maintenance
- checkpoint file before_maintenance
- checkpoint before.maintenance
- rollback running-confli file before_maintenance atomic

Answer: CE

NEW QUESTION 468

Refer to the exhibit



The communication between the web server and the application server experiences poor performance. The network engineer must collect the traffic between the two servers, including the payload for more investigation. The collected data must be sent from the remote site to the headquarters. Which action accomplishes this goal?

- A. Configure an ERSPAN session between N5K-1 and N5K-2.
- B. Configure a SPAN session between N5K-1 and N5K-2.
- C. Configure SNMP on N5K-1 to send the data to the monitor server.
- D. Configure NetFlow on N5K-1 to send the data to the monitor server.

Answer: A

NEW QUESTION 470

What are two requirements when planning a Cisco HyperFlex All Flash standard cluster installation using three HX240c M5 servers? (Choose Two)

- A. If the Jumbo MTU option in the HyperFlex installer is enabled, then jumbo frames do not have to be enabled on the upstream switches.
- B. The hypervisors must be installed to Cisco FlexFlash SD cards.
- C. If the Jumbo MTU option in the HyperFlex installer is enabled, then jumbo frames must also be enabled on the upstream switches.
- D. The cluster deployment type must support a mix of HDD and SSD.
- E. The servers must be discovered, unassociated, and connected to each fabric interconnect.

Answer: CE

Explanation:

https://www.cisco.com/c/en/us/td/docs/hyperconverged_systems/HyperFlex_HX_DataPlatformSoftware/AdminGuide/3_5/b_HyperFlexSystems_AdministrationGuide_3_5/b_HyperFlexSystems_AdministrationGuide_3_5_chapter_011

NEW QUESTION 471

An engineer is implementing FCoE. Which aspect of DCBXP on a Cisco Nexus switch affects this implementation?

- A. It uses the Cisco Fabric Services protocol to exchange parameters between two peer links.
- B. It always is enabled on 10/100-Mbps native Ethernet ports.
- C. It provides the authentication of peers on the Cisco Nexus switch.
- D. It requires that LLDP transmit and LLDP receive are enabled on the FCoE interface.

Answer: D

Explanation:

The Data Center Bridging Exchange Protocol (DCBXP) is an extension of LLDP. It is used to announce, exchange, and negotiate node parameters between peers. DCBXP parameters are packaged into a specific DCBXP TLV. This TLV is designed to provide an acknowledgement to the received LLDP packet. DCBXP is enabled by default, provided LLDP is enabled. DCBXP is disabled on ports where LLDP transmit or receive is disabled.

https://www.cisco.com/c/en/us/td/docs/switches/datacenter/nexus5000/sw/layer2/503_n2_1/b_Cisco_n5k_layer2

NEW QUESTION 476

An engineer enters these commands while in EEM on a Cisco Nexus 9000 Series Switch:

```

event manager applet Backup-config
event timer watchdog time 1800
name timer
event cli match "copy running-config startup-config"
what is the result of applying this configuration?
  
```

- A. It saves the running configuration every 1800 seconds.
- B. It generates an error because no action is mentioned.
- C. It executes the copy running-config startup-config command.

D. It blocks the copy running-config startup-config command.

Answer: B

Explanation:

<https://www.cisco.com/c/en/us/td/docs/switches/datacenter/nexus9000/sw/93x/system-management/b-cisco-nex>
Graphical user interface, text, application, email Description automatically generated

Prerequisites for EEM

EEM has the following prerequisites:

- You must have network-admin user privileges to configure EEM.

Guidelines and Limitations for EEM

EEM has the following configuration guidelines and limitations:

- The maximum number of configurable EEM policies is 500.
- Action statements within your user policy or overriding policy should not negate each other or adversely affect the associated system policy.
- To allow a triggered event to process any default actions, you must configure the EEM policy to allow the default action. For example, if you match a CLI command in a match statement, you must add the event-default action statement to the EEM policy or EEM will not allow the CLI command to execute.
- When you configure an EEM policy action to collect show tech commands, make sure to allocate enough time for the show tech commands to complete before the same action is called again.

NEW QUESTION 478

Drag and drop the hyperflex characteristics from the left onto the appropriate. HyperFlex Node types on the right. Not all options are used.

uses only SSD drives for caching

contains HDDs for the capacity layer

uses SSD drives or NVMe storage for caching

has SSD drives for the capacity layer

recommended for repeatable and sustainable high performance, especially for scenarios with a larger working set of data

recommended for capacity-sensitive solutions, lower budgets, and fewer performance-sensitive applications

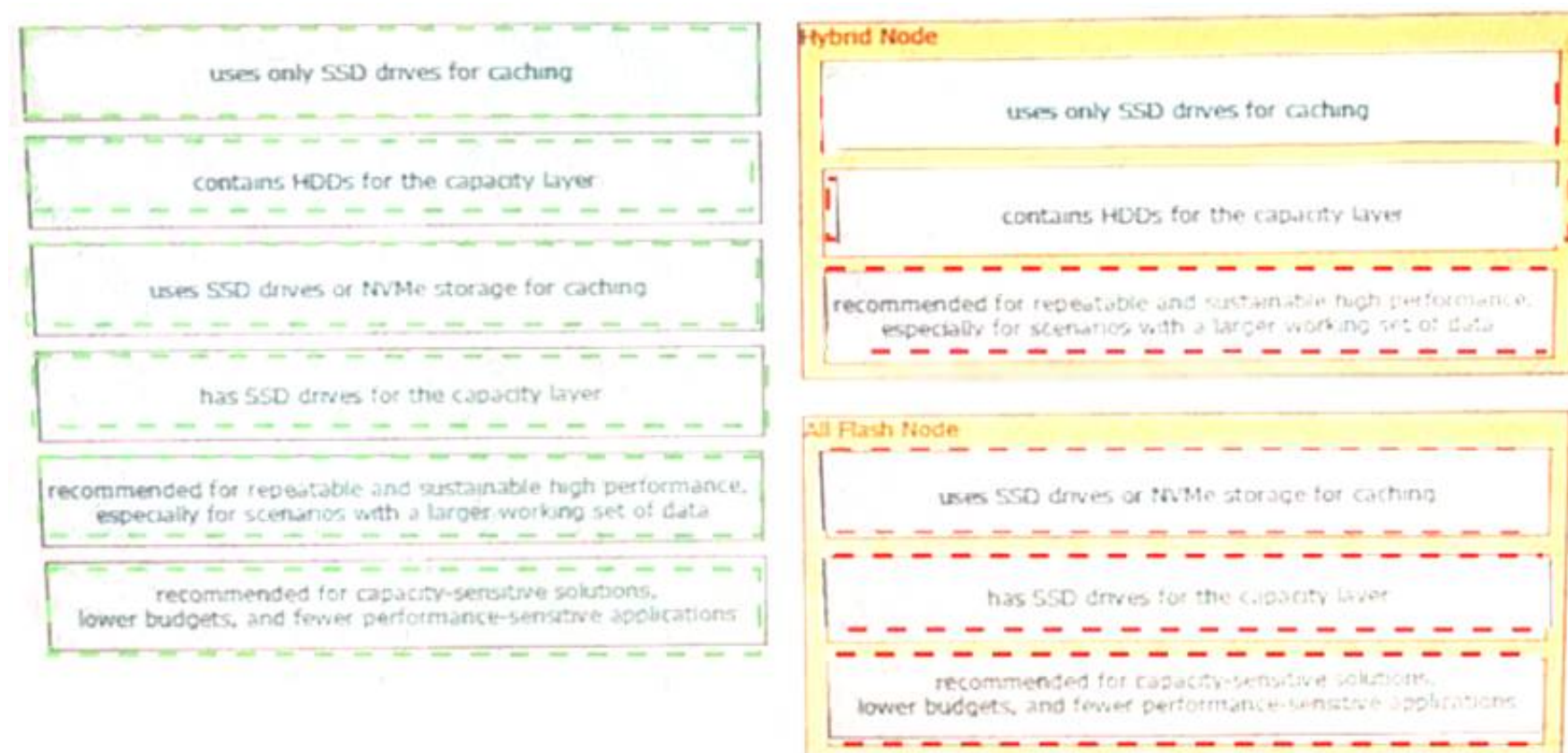
Hybrid Node

All Flash Node

- A. Mastered
B. Not Mastered

Answer: A

Explanation:



NEW QUESTION 481

An engineer is implementing traffic monitoring for a server vNIC that is configured with fabric failover enabled. The requirement is for the traffic to be sent to an analyzer, even during a failure of one of the fabric interconnects. The analyzer is connected to unconfigured Ethernet ports on both fabric interconnects. Which configuration accomplishes this task?

- A. Create two traffic monitoring session with different names, one per fabric Connect the analyzer connected to FI-BI the destination for both monitoring sessions.
- B. Create two traffic monitoring session with different names, one per fabric.
- C. Connect an analyser on each FI as the destination for the monitoring session local to the FI.
- D. Create two traffic monitoring sessions with the same name, one per fabric Connect the analyze connected to FI-A as the destination for both monitoring sessions

Answer: A

NEW QUESTION 485

An engineer must affirm the identity of the Cisco UCS Manager after a valid CA-signed keyring for HTTPS access is created. Which action completes the configuration?

- A. Set Cipher Suite Mode
- B. Create a trusted point
- C. Implement SSLv3
- D. Enable TLSv1.2

Answer: B

NEW QUESTION 487

An engineer is configuring a vHBA template in UCS Manager. The engineer needs to specify the logical addresses used by the vHBA and the path through which the SAN traffic flows. Which two resources must be specified in the vHBA template? (Choose two.)

- A. MAC addresses
- B. WWPNPool
- C. WWNN
- D. VLAN ID
- E. Fabric ID

Answer: BE

Explanation:

vNIC and vHBA Templates

vNIC and vHBA resources are always associated with specific FIs (A-side or B-side fabric interconnect). A typical Service Profile has at least two vNICs and two vHBAs; one bound to each side. vNIC (or vHBA) templates can be used to encapsulate both the MAC address pool (or WWPN pool) association as well as the fabric ID.

Best Practice: vNIC and vHBA Templates

Create reusable vNIC and vHBA templates in which termination is either reflected in the name (e.g., "fc0-A") or through well-accepted conventions (e.g., even interface to A side, and odd interface to B side).

vNIC templates should be thought of as application-specific network profiles that include important security definitions, such as VLAN mappings, as shown in Figure 6.

https://www.cisco.com/c/en/us/products/collateral/servers-unified-computing/ucs-manager/whitepaper_c11-697

NEW QUESTION 492

An engineer must remove the running configuration of a Cisco Nexus 9000 Series Switch and replace it with a backup file without restarting the switch. The backup file is stored on an SFTP server that is reachable via the An engineer must remove the running configuration mgmt0 interface Which set of commands accomplishes this task?

- ☐ copy sftp://admin@192.168.10.100/backup.cfg startup-config vrf mgmt0
copy startup-config running-config
- ☐ configure replace sftp://admin@192.168.10.100/backup.cfg vrf mgmt0
copy running-config bootflash://startup-config
- ☐ copy sftp://admin@192.168.10.100/backup.cfg bootflash:///backup.cfg vrf management
configure replace bootflash:///backup.cfg
- ☐ copy sftp://admin@192.168.10.100/backup.cfg startup-config vrf management
reload in 10

- A. Option A
- B. Option B
- C. Option C
- D. Option D

Answer: C

NEW QUESTION 493

Refer to the exhibit.

```
N9K-1# show running-config interface Ethernet1/1
switchport access vlan 10
spanning-tree port type edge
switchport port-security aging time 33
switchport port-security maximum 3
switchport port-security mac-address sticky
switchport port-security

N9K-1# show mac address-table interface ethernet 1/1
Legend:
    * - primary entry, G - Gateway MAC, (R) - Routed MAC, O - Overlay MAC
    age - seconds since last seen, + - primary entry using vPC Peer-Link,
    (T) - True, (F) - False, C - ControlPlane MAC, ~ - vsan
```

VLAN	MAC Address	Type	age	Secure	NTFY	Ports
* 10	0050.7966.6801	secure	-	T	F	Eth1/1
* 10	0050.7966.6802	secure	-	T	F	Eth1/1
* 10	0050.7966.6803	secure	-	T	F	Eth1/1

An engineer configures port security on a Cisco Nexus 9000 Series Switch. The requirement is to prevent any newly learned MAC addresses from forwarding traffic on the interface. Also, the already learned MAC addresses must not be affected by the changes. Which configuration meets these requirements?

- A. switchport port-security violation shutdown
- B. switchport port-security violation isolate
- C. switchport port-security violation protect
- D. switchport port-security violation restrict

Answer: C

NEW QUESTION 498

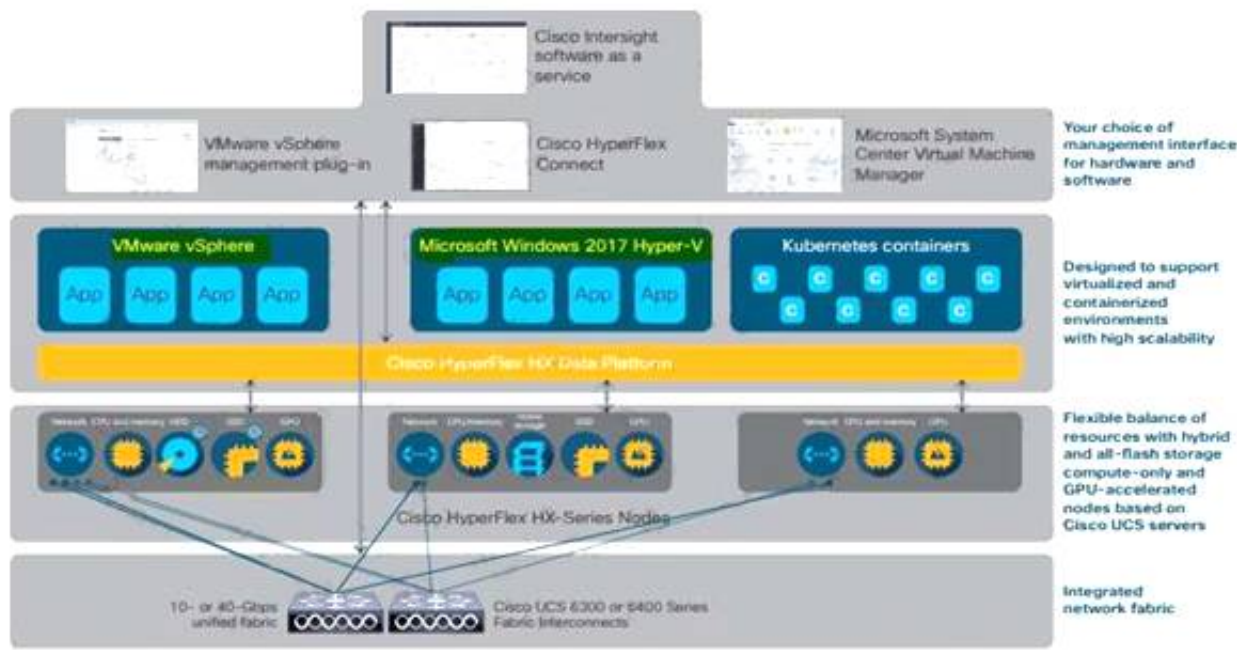
Which two hypervisors does Cisco HyperFlex support? (Choose two.)

- A. VMware vSphere
- B. Microsoft Hyper-V
- C. OpenStack
- D. Citrix XenServer
- E. RedHat KVM

Answer: AB

Explanation:

The Cisco HyperFlex platform is faster to deploy, simpler to manage, easier to scale, and ready to provide a unified pool of resources to power your business applications. You harness these resources with your choice of centralized management tools: Cisco Intersight™ software as a service, Cisco HyperFlex Connect, Microsoft System Center Virtual Machine Manager,



<https://www.cisco.com/c/dam/en/us/products/collateral/hyperconverged-infrastructure/hyperflex-hx-series/solution-overview-c22-736815.pdf>

NEW QUESTION 503

Which two components should be checked when a Cisco Nexus 9000 Series Switch fails to boot using POAP? (Choose two.)

- A. image noted in the script file against switch bootflash
- B. DHCP server to bootstrap IP information
- C. script signed with security key
- D. TFTP server that contains the configuration script
- E. POAP feature license

Answer: BD

Explanation:

https://www.cisco.com/c/en/us/td/docs/switches/datacenter/nexus9000/sw/7-x/troubleshooting/guide/b_Cisco_Nexus_9000_Series_NX-OS_Troubleshooting_Guide_7x/b_Cisco_Nexus_9000_Series_NXOS_Troubleshooting_Guide_7x_chapter_01100.html

https://www.cisco.com/c/en/us/td/docs/switches/datacenter/nexus9000/sw/7-x/fundamentals/configuration/guide/b_Cisco_Nexus_9000_Series_NX-OS_Fundamentals_Configuration_Guide_7x/b_Cisco_Nexus_9000_Series_NX-OS_Fundamentals_Configuration_Guide_7x_chapter_01100.html

NEW QUESTION 505

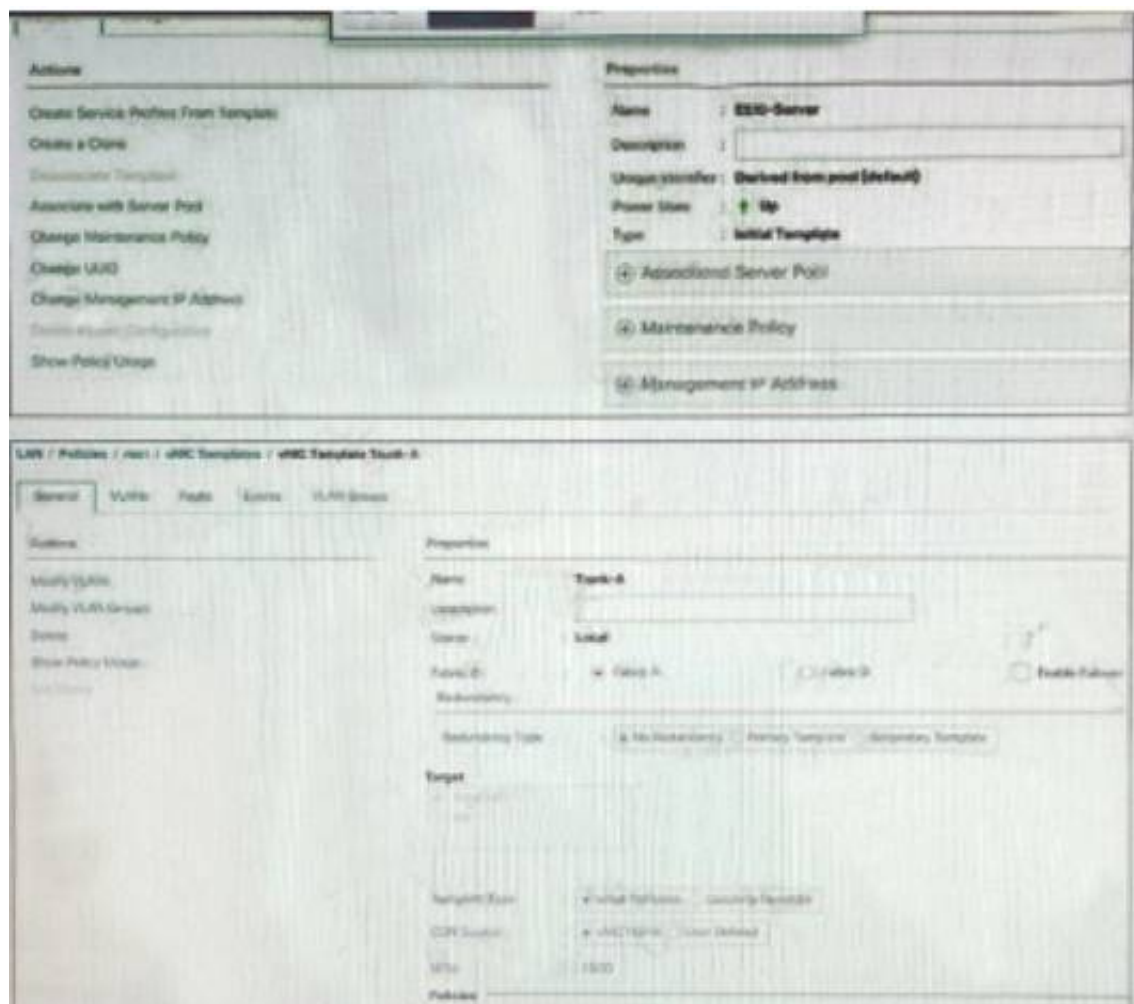
What is an advantage of using Ansible for automation as compared to puppet and chef?

- A. Ansible automates the enforcement of configuration settings.
- B. Ansible perform automation without installing a software agent on the target node.
- C. Ansible configures a set of CLI commands on a device by using NETCONF.
- D. Ansible abstracts a scenario so that set of configuration setting can be used across multiple operating systems.

Answer: B

NEW QUESTION 508

Refer to the exhibit.



Esxi-server is associated to the blade server. A VLAN added to trunk-a. the VLAN is missing on the vNIC of ESXI-server. Which action should be taken to add the VLAN to the cNIC?

- A. Change the template type of ESXI-Server to an updating template.
- B. Change the template type of Trunk-A to an updating template.
- C. Remove both template and recreate them as updating templates.
- D. Remove the VLAN from the Trunk-A template and add the VLAN again.

Answer: D

NEW QUESTION 510

Which component is excluded by default from the host firmware package?

- A. network interface controller
- B. board controller
- C. storage controller
- D. local disk

Answer: D

NEW QUESTION 511

A DevOps engineer must implement a bash script to query a REST API and return the available methods. Which code snippet completes the script?

```
curl -i -X --missing code-- http://api.cisco.com:8080/api -u admin:xT41M5P3X425VOE71NB5D
```

- A. DELETE
- B. TRACE
- C. POST
- D. OPTIONS

Answer: C

NEW QUESTION 514

.....

THANKS FOR TRYING THE DEMO OF OUR PRODUCT

Visit Our Site to Purchase the Full Set of Actual 350-601 Exam Questions With Answers.

We Also Provide Practice Exam Software That Simulates Real Exam Environment And Has Many Self-Assessment Features. Order the 350-601 Product From:

<https://www.2passeasy.com/dumps/350-601/>

Money Back Guarantee

350-601 Practice Exam Features:

- * 350-601 Questions and Answers Updated Frequently
- * 350-601 Practice Questions Verified by Expert Senior Certified Staff
- * 350-601 Most Realistic Questions that Guarantee you a Pass on Your FirstTry
- * 350-601 Practice Test Questions in Multiple Choice Formats and Updatesfor 1 Year