



Microsoft

Exam Questions AZ-400

Microsoft Azure DevOps Solutions (beta)

About ExamBible

[Your Partner of IT Exam](#)

Found in 1998

ExamBible is a company specialized on providing high quality IT exam practice study materials, especially Cisco CCNA, CCDA, CCNP, CCIE, Checkpoint CCSE, CompTIA A+, Network+ certification practice exams and so on. We guarantee that the candidates will not only pass any IT exam at the first attempt but also get profound understanding about the certificates they have got. There are so many alike companies in this industry, however, ExamBible has its unique advantages that other companies could not achieve.

Our Advances

* 99.9% Uptime

All examinations will be up to date.

* 24/7 Quality Support

We will provide service round the clock.

* 100% Pass Rate

Our guarantee that you will pass the exam.

* Unique Gurantee

If you do not pass the exam at the first time, we will not only arrange FULL REFUND for you, but also provide you another exam of your claim, ABSOLUTELY FREE!

NEW QUESTION 1

- (Topic 4)

Your team uses Azure Pipelines to deploy applications.

You need to ensure that when a failure occurs during the build or release process, all the team members are notified by using Microsoft Teams. The solution must minimize development effort.

What should you do?

- A. Install the Azure Boards app for Teams and configure a subscription to receive notifications in a channel.
- B. Use Azure Automation to connect to the Azure DevOps REST API and notify the team members.
- C. Use an Azure function to connect to the Azure DevOps REST API and notify the team members.
- D. Install the Azure Pipelines app for Teams and configure a subscription to receive notifications in a channel.

Answer: D

NEW QUESTION 2

SIMULATION - (Topic 4)

You need to create a notification if the peak average response time of an Azure web app named az400-9940427-main is more than five seconds when evaluated during a five- minute period. The notification must trigger the “https://contoso.com/notify” webhook.

To complete this task, sign in to the Microsoft Azure portal.

- A. Mastered
- B. Not Mastered

Answer: A

Explanation:

- * 1. Open Microsoft Azure Portal
- * 2. Log into your Azure account and go to App Service and look under Monitoring then you will see Alert.
- * 3. Select Add an alert rule
- * 4. Configure the alert rule as per below and click Ok. Source: Alert on Metrics
Resource Group: az400-9940427-main Resource: az400-9940427-main Threshold: 5
Period: Over the last 5 minutes Webhook: https://contoso.com/notify

Add an alert rule

* Threshold ⓘ

1

bytes/second

* Period ⓘ

Over the last 5 minutes

Email service and co-administrators

☐

Additional administrator email

Additional administrator email

Webhook ⓘ

HTTP or HTTPS endpoint to route alerts to

[Learn more about configuring webhooks](#)

OK

References:

<https://azure.microsoft.com/es-es/blog/webhooks-for-azure-alerts/>

NEW QUESTION 3

SIMULATION - (Topic 4)

You need to create an instance of Azure Application Insights named az400-9940427-main and configure the instance to receive telemetry data from an Azure web app named az400- 9940427-main.

To complete this task, sign in to the Microsoft Azure portal.

- A. Mastered
- B. Not Mastered

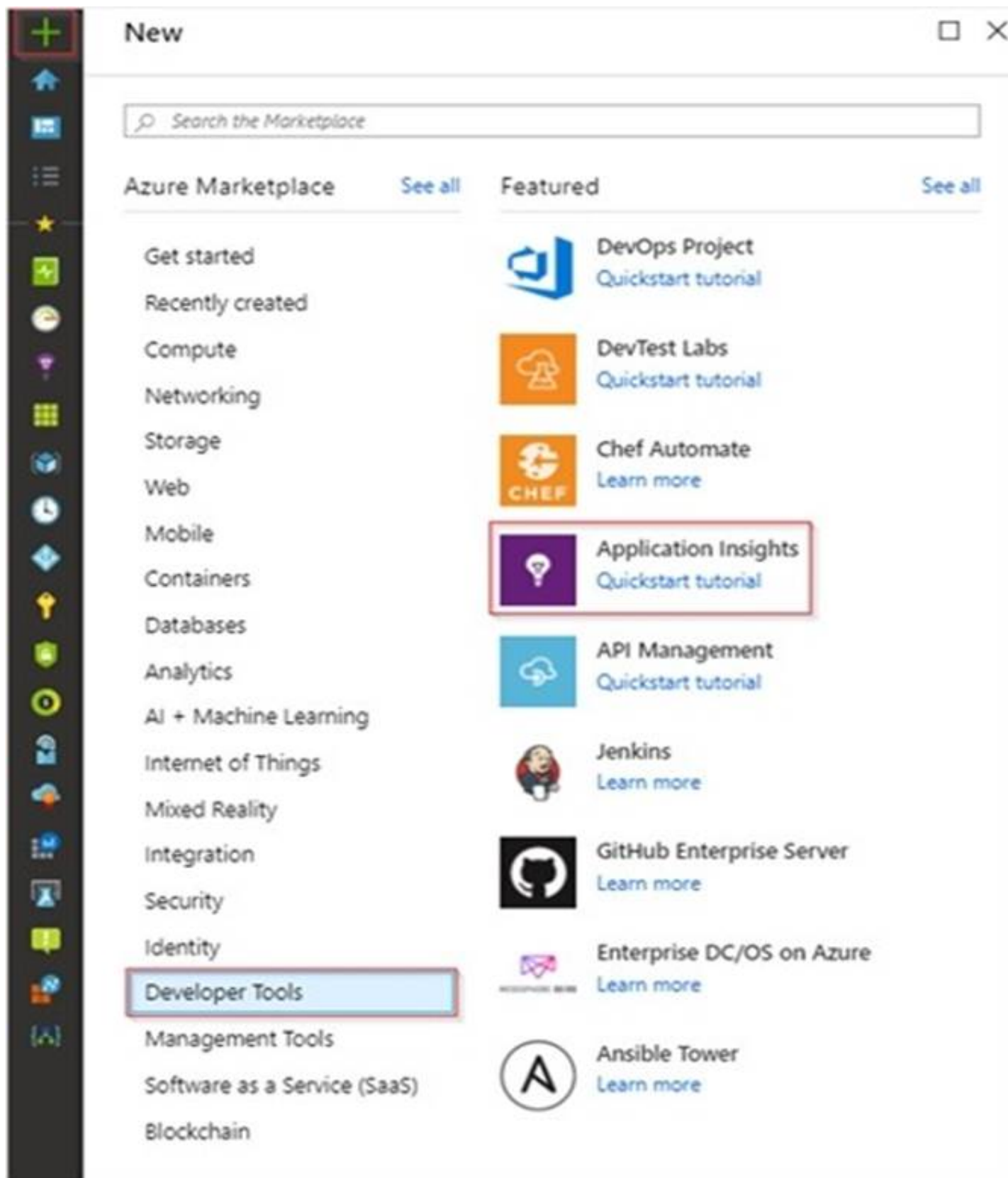
Answer: A

Explanation:

Step 1: Create an instance of Azure Application Insights

* 1. Open Microsoft Azure Portal

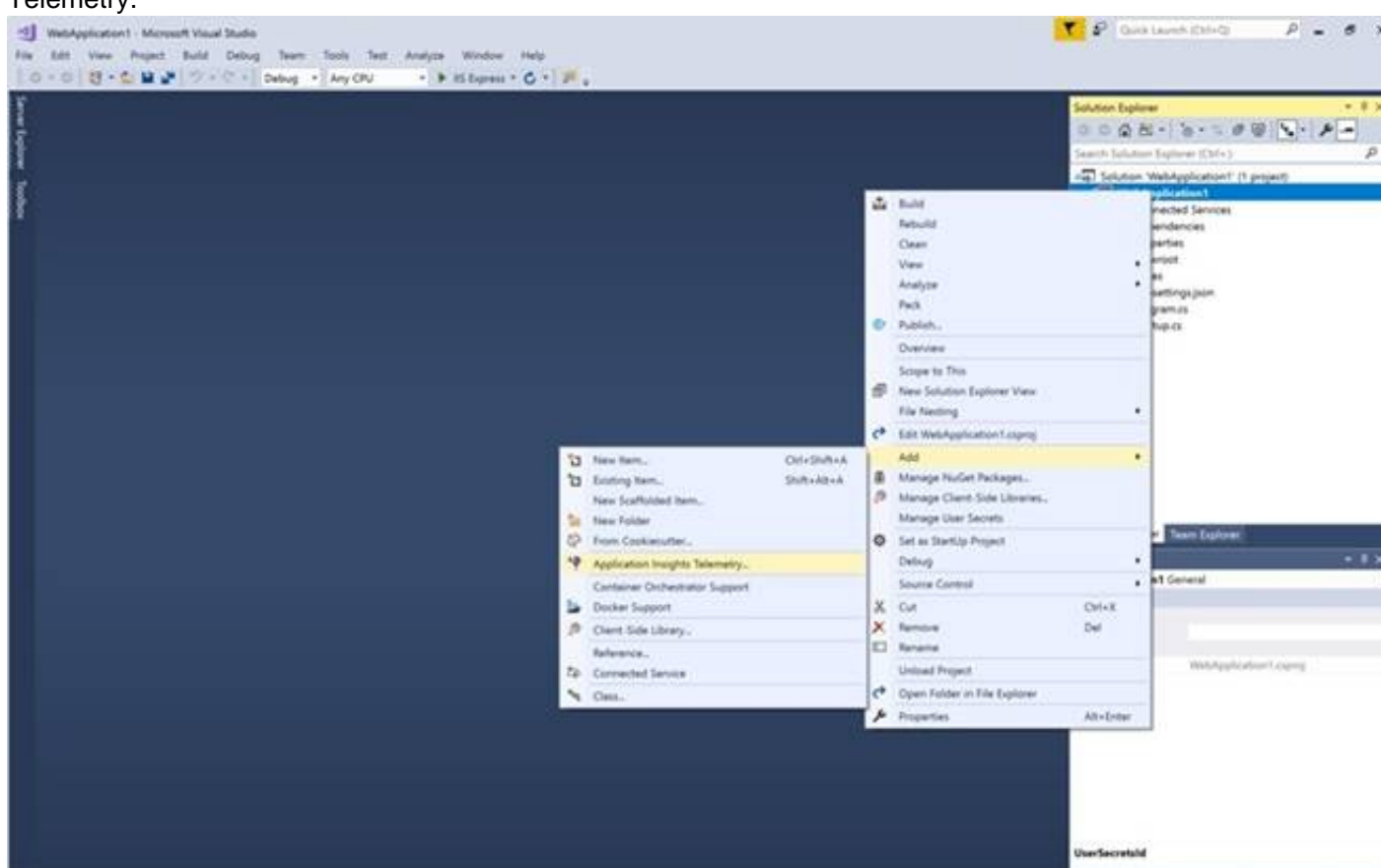
* 2. Log into your Azure account, Select Create a resource > Developer tools > Application Insights.



* 3. Enter the following settings, and then select Review + create. Name: az400-9940427-main

Step 2: Configure App Insights SDK

* 4. Open your ASP.NET Core Web App project in Visual Studio > Right-click on the AppName in the Solution Explorer > Select Add > Application Insights Telemetry.



* 5. Click the Get Started button

* 6. Select your account and subscription > Select the Existing resource you created in the Azure portal > Click Register.

References:

<https://docs.microsoft.com/bs-latn-ba/azure/azure-monitor/learn/dotnetcore-quick-start?view=vs-2017>

NEW QUESTION 4

FILL IN THE BLANK - (Topic 4)

You use Get for source control. You have an app named Appt.
In the main branch, you need to restore the third most recent revision of a file named App.exe.config .
How should you complete command?

git main

git restore main~3 App.exe.config

- A. Mastered
- B. Not Mastered

Answer: A

Explanation:

git checkout main

git restore --patch main~3 App.exe.config

NEW QUESTION 5

HOTSPOT - (Topic 4)

You have a project in Azure DevOps that includes two users named User1 and User2. You plan to use Azure Monitor to manage logs.
You need to ensure that the users can perform the actions shown in following the table.

User	Action
User1	<ul style="list-style-type: none">• Create private monitoring dashboards.• Search usage data for an Azure Monitor workspace.
User2	<ul style="list-style-type: none">• View autoscale settings.• View alert activities and settings.

The solution must follow the principle of least privilege.
Which role should you assign to each user? To answer select the appropriate options in the answer area.
NOTE: Each correct selection is worth one point.

Answer Area

User1:

Monitoring Contributor
Log Analytics Reader
Monitoring Contributor
Monitoring Metrics Publisher
Monitoring Reader

User2:

Monitoring Reader
Log Analytics Reader
Monitoring Contributor
Monitoring Metrics Publisher
Monitoring Reader

- A. Mastered
- B. Not Mastered

Answer: A

Explanation:

Answer Area

User1:

Monitoring Contributor
Log Analytics Reader
Monitoring Contributor
Monitoring Metrics Publisher
Monitoring Reader

User2:

Monitoring Reader
Log Analytics Reader
Monitoring Contributor
Monitoring Metrics Publisher
Monitoring Reader

NEW QUESTION 6

DRAG DROP - (Topic 4)

You need to recommend project metrics for dashboards in Azure DevOps.

Which chart widgets should you recommend for each metric? To answer, drag the appropriate chart widgets to the correct metrics. Each chart widget may be used once, more than once, or not at all. You may need to drag the split bar between panes or scroll to view content.

NOTE: Each correct selection is worth one point.

Chart Widgets

Answer Area

Burndown

Cycle Time

Lead Time

Velocity

The elapsed time from the creation of work items to their completion:

The elapsed time to complete work items once they are active:

The remaining work:

- A. Mastered
- B. Not Mastered

Answer: A

Explanation:

Box 1: Lead time

Lead time measures the total time elapsed from the creation of work items to their completion.

Box 2: Cycle time

Cycle time measures the time it takes for your team to complete work items once they begin actively working on them.

Box 3: Burndown

Burndown charts focus on remaining work within a specific time period.

NEW QUESTION 7

- (Topic 4)

You have a project in Azure DevOps named Project1. Project1 contains a pipeline that builds a container image named Image1 and pushes Image1 to an Azure container registry named ACR1. Image1 uses a base image stored in Docker Hub.

You need to ensure that Image1 is updated automatically whenever the base image is updated.

What should you do?

- A. Create and run an Azure Container Registry task.
- B. Add a Docker Hub service connection to Azure Pipelines.
- C. Enable the Azure Event Grid resource provider and subscribe to registry events.
- D. Create a service hook in Project1.

Answer: A

Explanation:

ACR Tasks supports automated container image builds when a container's base image is updated, such as when you patch the OS or application framework in one of your base images.

Reference:

<https://docs.microsoft.com/en-us/azure/container-registry/container-registry-tutorial-base-image-update>

NEW QUESTION 8

HOTSPOT - (Topic 4)

You have an Azure DevOps project that contains a build pipeline. The build pipeline uses approximately 50 open source libraries.

You need to ensure that the project can be scanned for known security vulnerabilities in the open source libraries.

What should you do? To answer, select the appropriate options in the answer area. NOTE: Each correct selection is worth one point.

Object to create: ▼

- A build task
- A deployment task
- An artifacts repository

Service to use: ▼

- WhiteSource Bolt
- Bamboo
- CMake
- Chef

- A. Mastered
- B. Not Mastered

Answer: A

Explanation:

Box 1: A Build task Trigger a build

You have a Java code provisioned by the Azure DevOps demo generator. You will use WhiteSource Bolt extension to check the vulnerable components present in this code.

? Go to Builds section under Pipelines tab, select the build definition WhiteSourceBolt and click on Queue to trigger a build.

? To view the build in progress status, click on ellipsis and select View build results.

Box 2: WhiteSource Bolt

WhiteSource is the leader in continuous open source software security and compliance management. WhiteSource integrates into your build process, irrespective of your programming languages, build tools, or development environments. It works automatically, continuously, and silently in the background, checking the security, licensing, and quality of your open source components against WhiteSource constantly-updated denitive database of open source repositories.

References: <https://www.azuredevopslabs.com/labs/vstsextend/whitesource/>

NEW QUESTION 9

- (Topic 4)

You use GitHub for source control.

A file that contains sensitive data is committed accidentally to the Get repository of a project.

You need to delete the file and its history form the repository.

Which two tools can you use? Each correct answer presents a complete solution. NOTE: Each correct selection is worth one point.

- A. the git filter-branch command
- B. BFG Repo-Cleaner
- C. the git rebase command
- D. GitHub Desktop

Answer: AB

Explanation:

To entirely remove unwanted files from a repository's history you can use either the git filter-branch command or the BFG Repo-Cleaner open source tool.

Reference:

<https://docs.github.com/en/github/authenticating-to-github/keeping-your-account-and-data-secure/removing-sensitive-data-from-a-repository>

NEW QUESTION 10

- (Topic 4)

Your company hosts a web application in Azure. The company uses Azure Pipelines for the build and release management of the application.

Stakeholders report that the past few releases have negatively affected system performance.

You configure alerts in Azure Monitor.

You need to ensure that new releases are only deployed to production if the releases meet defined performance baseline criteria in the staging environment first.

What should you use to prevent the deployment of releases that fall to meet the performance baseline?

- A. an Azure Scheduler job
- B. a trigger
- C. a gate
- D. an Azure function

Answer: C

Explanation:

Scenarios and use cases for gates include:

? Quality validation. Query metrics from tests on the build artifacts such as pass rate or code coverage and deploy only if they are within required thresholds.

Use Quality Gates to integrate monitoring into your pre-deployment or post-deployment. This ensures that you are meeting the key health/performance metrics (KPIs) as your applications move from dev to production and any differences in the infrastructure environment or scale is not negatively impacting your KPIs.

Note: Gates allow automatic collection of health signals from external services, and then promote the release when all the signals are successful at the same time or stop the deployment on timeout. Typically, gates are used in connection with incident management, problem management, change management, monitoring, and external approval systems.

References:

<https://docs.microsoft.com/en-us/azure/azure-monitor/continuous-monitoring>

<https://docs.microsoft.com/en-us/azure/devops/pipelines/release/approvals/gates?view=azure-devops>

NEW QUESTION 10

- (Topic 4)

You have an Azure DevOps organization named Contoso.

You need to recommend an authentication mechanism that meets the following requirements:

- Supports authentication from Get
 - Minimizes the need to provide credentials during authentication
- What should you recommend?

- A. managed identities in Azure Active Directory (Azure AD)
- B. personal access tokens (PATs) in Azure DevOps
- C. user accounts in Azure Active Directory (Azure AD)
- D. Alternate credentials in Azure DevOps

Answer: B

Explanation:

Personal access tokens (PATs) give you access to Azure DevOps and Team Foundation Server (TFS), without using your username and password directly. These tokens have an expiration date from when they're created. You can restrict the scope of the data they can access. Use PATs to authenticate if you don't already have SSH keys set up on your system or if you need to restrict the permissions that are granted by the credential.

Reference:

<https://docs.microsoft.com/en-us/azure/devops/repos/git/auth-overview>

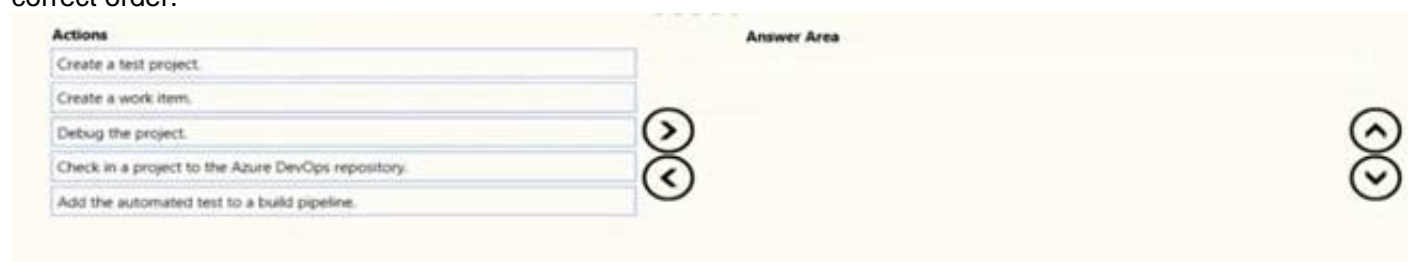
NEW QUESTION 12

DRAG DROP - (Topic 4)

You have a project in Azure DevOps.

You need to associate an automated test to a test case.

Which three actions should you perform in sequence? To answer, move the appropriate actions from the list of actions to the answer area and arrange them in the correct order.



- A. Mastered
- B. Not Mastered

Answer: A

Explanation:

The process to associate an automated test with a test case is:

? Create a test project containing your automated test. What types of tests are supported?

? Check your test project into an Azure DevOps or Team Foundation Server (TFS) repository.

? Create a build pipeline for your project, ensuring that it contains the automated test. What are the differences if I am still using a XAML build?

? Use Visual Studio Enterprise or Professional 2017 or a later version to associate the automated test with a test case as shown below. The test case must have been added to a test plan that uses the build you just defined.

NEW QUESTION 17

- (Topic 4)

Your company uses Azure DevOps for the build pipelines and deployment pipelines of Java based projects. You need to recommend a strategy for managing technical debt.

Which two actions should you include in the recommendation? Each correct answer presents part of the solution

NOTE: Each correct selection is worth one point.

- A. Integrate Azure DevOps and SonarQube.
- B. Integrates Azure DevOps and Azure DevTest Labs.
- C. Configure post-deployment approvals in the deployment pipeline.
- D. Configure pre-deployment approvals in the deployment pipeline.

Answer: AC

NEW QUESTION 21

DRAG DROP - (Topic 4)

You use Get for source control.

You delete a file, commit the changes, and continue to work. You need to recover the deleted file.

Which three commands should you run in sequence? To answer, move the appropriate commands from the list of commands to the answer area and arrange them in the correct order.

Commands

git restore path/to/file

git log

git commit -m 'undeleated the file'

git checkout [hash]-1 -- path/to/file

git stash

git tag

Answer Area

- A. Mastered
B. Not Mastered

Answer: A

Explanation:

Commands

git restore path/to/file

git log

git commit -m 'undeleated the file'

git checkout [hash]-1 -- path/to/file

git stash

git tag

Answer Area

git log

git checkout [hash]-1 -- path/to/file

git restore path/to/file

NEW QUESTION 25

- (Topic 4)

Note: This question is part of a series of questions that present the same scenario. Each question in the series contains a unique solution that might meet the stated goals. Some question sets might have more than one correct solution, while others might not have a correct solution.

After you answer a question in this section, you will NOT be able to return to it. As a result, these questions will not appear in the review screen.

You have an Azure DevOps project.

Your build process creates several artifacts.

You need to deploy the artifacts to on-premises servers.

Solution: You deploy a Docker build to an on-premises server. You add a Download Build Artifacts task to the deployment pipeline.

Does this meet the goal?

- A. Yes
B. No

Answer: B

Explanation:

Instead you should deploy an Azure self-hosted agent to an on-premises server.

Note: To build your code or deploy your software using Azure Pipelines, you need at least one agent.

If your on-premises environments do not have connectivity to a Microsoft-hosted agent pool (which is typically the case due to intermediate firewalls), you'll need to manually configure a self-hosted agent on on-premises computer(s).

References:

<https://docs.microsoft.com/en-us/azure/devops/pipelines/agents/agents?view=azure-devops>

NEW QUESTION 26

- (Topic 4)

You have a multi-tier application. The front end of the application is hosted in Azure App Service. You need to identify the average load times of the application pages. What should you use?

- A. the diagnostics logs of the App Service
B. Azure Application Insights
C. Azure Advisor
D. the activity log of the App Service

Answer: B

NEW QUESTION 27

- (Topic 4)

Note: This question is part of a series of questions that present the same scenario. Each question in the series contains a unique solution that might meet the stated goals. Some question sets might have more than one correct solution, while others might not have a correct solution.

After you answer a question in this section, you will NOT be able to return to it. As a result, these questions will not appear in the review screen.

You have an approval process that contains a condition. The condition requires that releases be approved by a team leader before they are deployed.

You have a policy stating that approvals must occur within eight hours.

You discover that deployment fail if the approvals take longer than two hours.

You need to ensure that the deployments only fail if the approvals take longer than eight hours.

Solution: From Post-deployment conditions, you modify the Timeout setting for post- deployment approvals.

Does this meet the goal?

- A. Yes
B. No

Answer: B

Explanation:

Use Pre-deployments conditions instead. Use a gate instead of an approval instead.

References:

<https://docs.microsoft.com/en-us/azure/devops/pipelines/release/approvals/gates>

NEW QUESTION 32

- (Topic 4)

You have a web app hosted on Azure App Service. The web app stores data in an Azure SQL database.

You need to generate an alert when there are 10,000 simultaneous connections to the database. The solution must minimize development effort.

Which option should you select in the Diagnostics settings of the database?

- A. Send to Log Analytics
- B. Archive to storage account
- C. Stream to an event hub

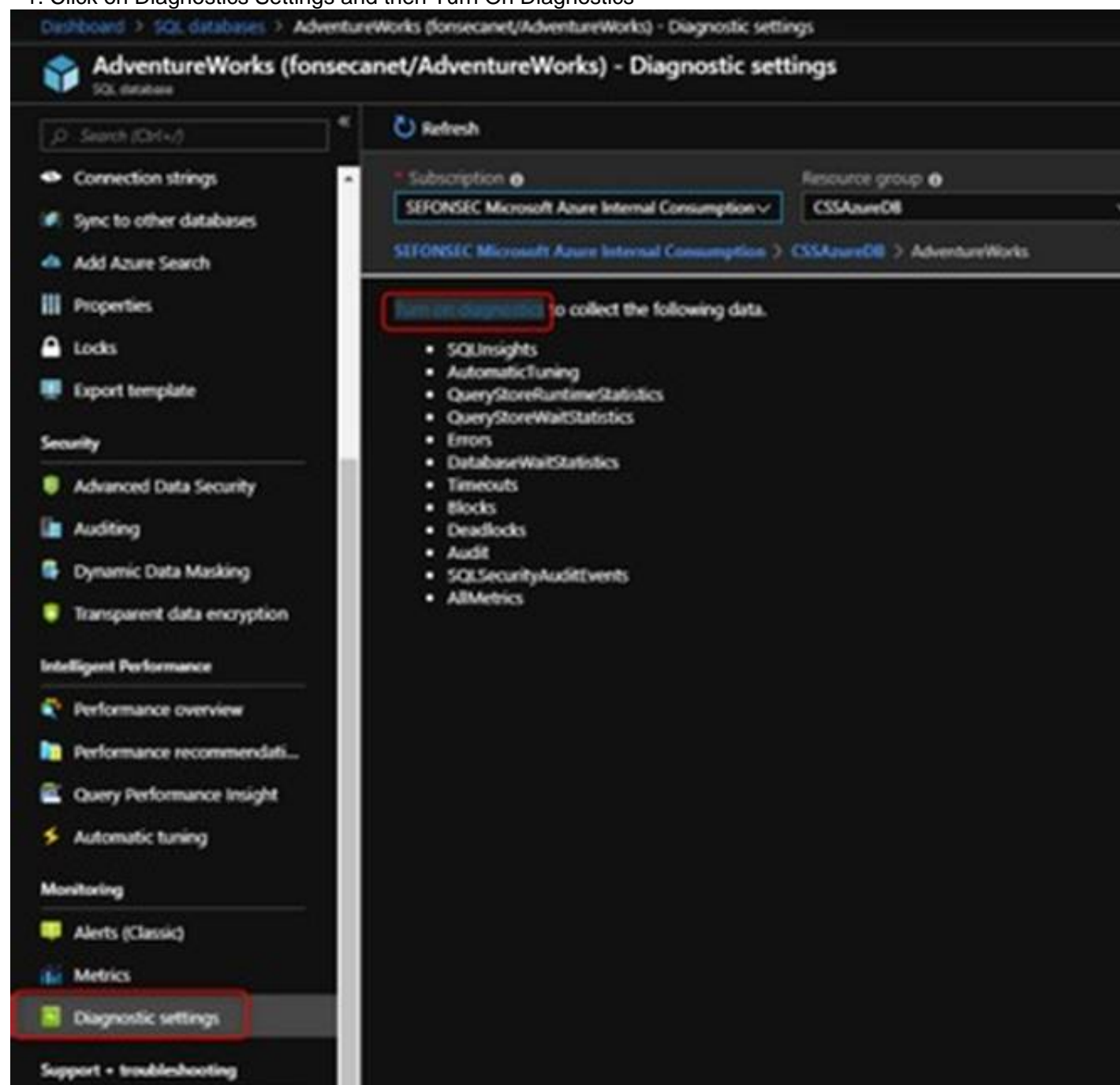
Answer: A

Explanation:

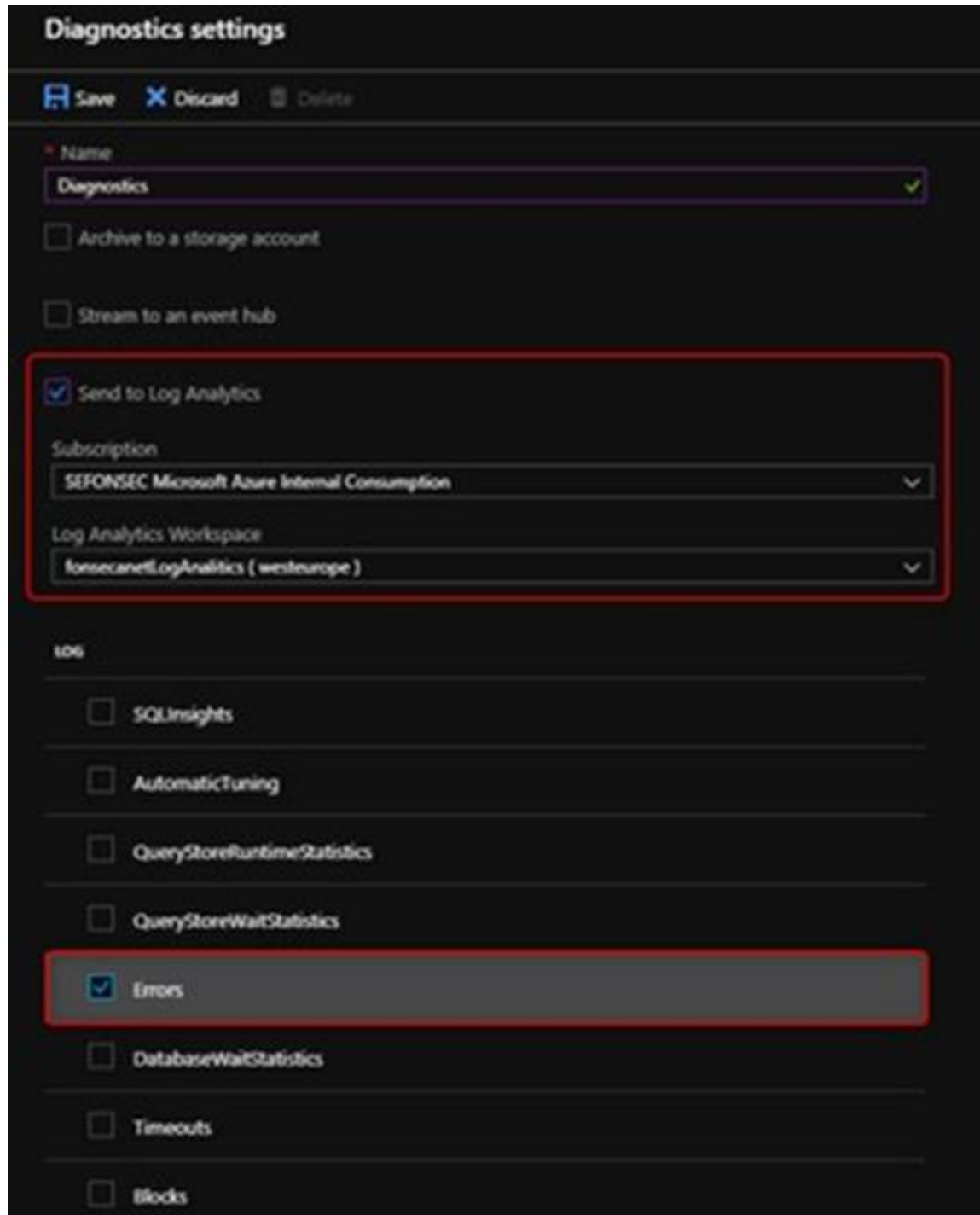
ENABLE DIAGNOSTICS TO LOG ANALYTICS

This configuration is done PER DATABASE

* 1. Click on Diagnostics Settings and then Turn On Diagnostics



* 2. Select to Send to Log Analytics and select the Log Analytics workspace. For this sample I will select only Errors



Reference:
<https://techcommunity.microsoft.com/t5/azure-database-support-blog/azure-sql-db-and-log-analytics-better-together-part-1/ba-p/794833>

NEW QUESTION 35

HOTSPOT - (Topic 4)

Your company is building a new web application.

You plan to collect feedback from pilot users on the features being delivered.

All the pilot users have a corporate computer that has Google Chrome and the Microsoft Test & Feedback extension installed. The pilot users will test the application by using Chrome.

You need to identify which access levels are required to ensure that developers can request and gather feedback from the pilot users. The solution must use the principle of least privilege.

Which access levels m Azure DevOps should you identify? To answer, select the appropriate options in the answer area

NOTE: Each correct selection is worth one point.

Developers:

	▼
Basic	
Stakeholder	

Pilot users:

	▼
Basic	
Stakeholder	

- A. Mastered
- B. Not Mastered

Answer: A

Explanation:

Box 1: Basic

Assign Basic to users with a TFS CAL, with a Visual Studio Professional subscription, and to users for whom you are paying for Azure Boards & Repos in an

organization.

Box 2: Stakeholder

Assign Stakeholders to users with no license or subscriptions who need access to a limited set of features.

Note:

You assign users or groups of users to one of the following access levels:

Basic: provides access to most features

VS Enterprise: provides access to premium features

Stakeholders: provides partial access, can be assigned to unlimited users for free

References: <https://docs.microsoft.com/en-us/azure/devops/organizations/security/access-levels?view=vsts>

NEW QUESTION 37

- (Topic 4)

Note: This question is part of a series of questions that present the same scenario. Each question in the series contains a unique solution that might meet the stated goals. Some question sets might have more than one correct solution, while others might not have a correct solution.

After you answer a question in this section, you will NOT be able to return to it. As a result, these questions will not appear in the review screen.

You have an approval process that contains a condition. The condition requires that releases be approved by a team leader before they are deployed.

You have a policy stating that approvals must occur within eight hours.

You discover that deployments only fail if the approvals take longer than two hours.

You need to ensure that the deployments only fail if the approvals take longer than hours. Solution: From Post-deployment conditions, you modify the Timeout setting for post-

deployment approvals. Does this meet the goal?

A. Yes

B. NO

Answer: B

NEW QUESTION 38

- (Topic 4)

You need to recommend an integration strategy for the build process of a Java application. The solution must meet the following requirements:

- The builds must access an on-premises dependency management system.
- The build outputs must be stored as Server artifacts in Azure DevOps.
- The source code must be stored in a Git repository in Azure DevOps.

Solution: Configure the build pipeline to use a Microsoft-hosted agent pool running a Linux image. Include the Java Tool Installer task in the build pipeline.

Does this meet the goal?

A. Yes

B. No

Answer: B

Explanation:

To run your jobs, you'll need at least one agent. A Linux agent can build and deploy different kinds of apps, including Java and Android apps.

If your pipelines are in Azure Pipelines and a Microsoft-hosted agent meets your needs, you can skip setting up a private Linux agent.

The Azure Pipelines agent pool offers several virtual machine images to choose from, each including a broad range of tools and software. We support Ubuntu, Red Hat, and CentOS.

Reference:

<https://docs.microsoft.com/en-us/azure/devops/pipelines/agents/v2-linux?view=azure-devops>

<https://docs.microsoft.com/en-us/azure/devops/pipelines/agents/hosted?view=azure-devops&tabs=yaml>

NEW QUESTION 40

DRAG DROP - (Topic 4)

You need to recommend a solution for deploying charts by using Helm and Title to Azure Kubernetes Service (AKS) in an RBAC-enabled cluster.

Which three commands should you recommend be run in sequence? To answer, move the appropriate commands from the list of commands to the answer area and arrange them in the correct order.

Commands

Answer Area

helm install

kubectl create

helm completion

helm init

helm serve



A. Mastered

B. Not Mastered

Answer: A

Explanation:

Step 1: Kubectl create

You can add a service account to Tiller using the --service-account <NAME> flag while you're configuring Helm (step 2 below). As a prerequisite, you'll have to create a role binding which specifies a role and a service account name that have been set up in advance.

Example: Service account with cluster-admin role

```
$ kubectl create -f rbac-config.yaml serviceaccount "tiller" created clusterrolebinding "tiller" created
```

```
$ helm init --service-account tiller
```

Step 2: helm init

To deploy a basic Tiller into an AKS cluster, use the helm init command.

Step 3: helm install

To install charts with Helm, use the helm install command and specify the name of the chart to install.

References:

<https://docs.microsoft.com/en-us/azure/aks/kubernetes-helm> https://docs.helm.sh/using_helm/#tiller-namespaces-and-rbac

NEW QUESTION 42

DRAG DROP - (Topic 4)

You have an Azure subscription that contains a resources group named RG1. RG1 contains the following resources:

- Four Azure virtual machines that run Windows Server and have Internet Information Services (IIS) installed
- SQL Server on an Azure virtual machine
- An Azure Load Balancer

You need to deploy an application to the virtual machines in RG1 by using Azure Pipelines. Which four actions should you perform in sequence? To answer, move the appropriate

actions from the List of actions to the answer area and arrange them in the correct order.



- A. Mastered
- B. Not Mastered

Answer: A

Explanation:

Step 1: Create an agent pool

Azure Pipelines provides a pre-defined agent pool named Azure Pipelines with Microsoft- hosted agents.

Step 2: Create a deployment group

Deployment groups make it easy to define logical groups of target machines for deployment, and install the required agent on each machine.

Step 3: Execute the Azure Pipelines Agent extension to the virtual machines Install the Azure Pipelines Agent Azure VM extension

Step 4: Add and configure a deployment group job for the pipeline

Tasks that you define in a deployment group job run on some or all of the target servers, depending on the arguments you specify for the tasks and the job itself.

NEW QUESTION 46

- (Topic 4)

Note: This question is part of a series of questions that present the same scenario. Each question in the series contains a unique solution that might meet the stated goals. Some question sets might have more than one correct solution, while others might not have a correct solution.

After you answer a question in this section, you will NOT be able to return to it. As a result, these questions will not appear in the review screen.

Your company has a project in Azure DevOps for a new web application. You need to ensure that when code is checked in, a build runs automatically.

Solution: From the Pre-deployment conditions settings of the release pipeline, you select After stage.

Does this meet the goal?

- A. Yes
- B. No

Answer: B

Explanation:

Instead, In Visual Designer you enable continuous integration (CI) by:

? Select the Triggers tab.

? Enable Continuous integration.

References:

<https://docs.microsoft.com/en-us/azure/devops/pipelines/get-started-designer>

NEW QUESTION 49

- (Topic 4)

Note: This question is part of a series of questions that present the same scenario. Each question in the series contains a unique solution that might meet the stated goals. Some question sets might have more than one correct solution, while others might not have a correct solution.

After you answer a question in this section, you will NOT be able to return to it. As a result, these questions will not appear in the review screen.

The lead developer at your company reports that adding new application features takes

longer than expected due to a large accumulated technical debt.

You need to recommend changes to reduce the accumulated technical debt. Solution: You recommend reducing the code coupling and the dependency cycles?

Does this meet the goal?

- A. Yes
- B. No

Answer: B

Explanation:

Instead reduce the code complexity.

Note: Technical debt is the accumulation of sub-optimal technical decisions made over the lifetime of an application. Eventually, it gets harder and harder to change things: it's the 'sand in the gears' that sees IT initiatives grind to a halt.

Reference:

<https://dzone.com/articles/fight-through-the-pain-how-to-deal-with-technical> <https://www.devopsgroup.com/blog/five-ways-devops-helps-with-technical-debt/>

NEW QUESTION 52

DRAG DROP - (Topic 4)

Your company has a project in Azure DevOps.

You plan to create a release pipeline that will deploy resources by using Azure Resource Manager templates. The templates will reference secrets stored in Azure Key Vault.

You need to recommend a solution for accessing the secrets stored in the key vault during deployments. The solution must use the principle of least privilege.

What should you include in the recommendation? To answer, drag the appropriate configurations to the correct targets. Each configuration may be used once, more than once, or not at all. You may need to drag the split bar between panes or scroll to view content.

NOTE: Each correct selection is worth one point.

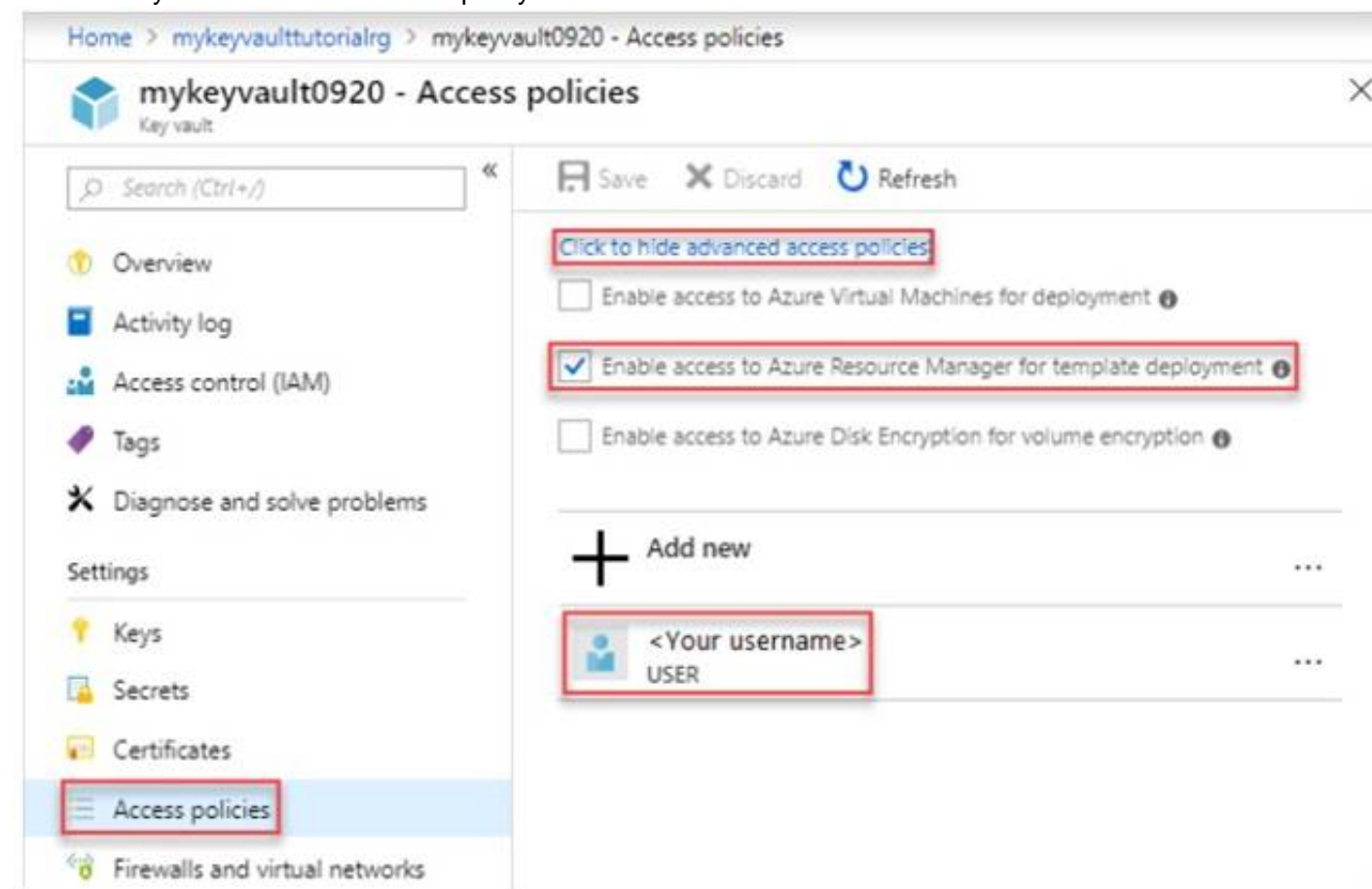
Configurations	Answer Area
A Key Vault access policy	Enable key vaults for template deployment by using: <input type="text"/>
A Key Vault advanced access policy	Restrict access to the secrets in Key Vault by using: <input type="text"/>
RBAC	

- A. Mastered
- B. Not Mastered

Answer: A

Explanation:

Box 1: A key Vault advanced access policy



Box 2: RBAC

Management plane access control uses RBAC.

The management plane consists of operations that affect the key vault itself, such as:

- ? Creating or deleting a key vault.
- ? Getting a list of vaults in a subscription.
- ? Retrieving Key Vault properties (such as SKU and tags).
- ? Setting Key Vault access policies that control user and application access to keys and secrets.

References: <https://docs.microsoft.com/en-us/azure/azure-resource-manager/resource-manager-tutorial-use-key-vault>

NEW QUESTION 56

HOTSPOT - (Topic 4)

You have a project Azure DevOps.

You plan to create a build pipeline that will deploy resources by using Azure Resource Manager templates. The templates will reference secretes stored in Azure Key Vault.

You need to ensure that you can dynamically generate the resource ID of the key vault during template deployment.

What should you include in the template? To answer, select eh appropriate options in the answer area.

NOTE: Each correct selection is worth one point.

```

"resources": [
{
  "apiversion": "2018-05-01",
  "name" : "secrets",
  "type": 

|                                         |   |
|-----------------------------------------|---|
|                                         | ▼ |
| "Microsoft.KeyVault/vaults",            |   |
| "Microsoft.Resources/deployment".       |   |
| "Microsoft.Subscription/subscriptions". |   |


  "properties": {
    "mode" : "Incremental",
    

|                |   |
|----------------|---|
|                | ▼ |
| "deployment"   |   |
| "template"     |   |
| "templateLink" |   |


  },
  "contentVersion" : "1.0.0.0",
  "uri" : "[uri(parameters('_artifactsLocation'),
concat('./nested/sqlserver.json',
parameters('_artifactsLocationSasToken')))]"
},
"parameters": {
  "secret": {
    "reference": {
      "keyVault": {
        "id": "[resourceId(parameters('vaultSubscription'),
parameters('vaultResourceGroupName'),
'Microsoft.KeyVault/vaults',
parameters('vaultName'))]"
      },
      "secretName": "[parameters('secretName')]"
    }
  }
}
],

```

- A. Mastered
- B. Not Mastered

Answer: A

Explanation:

```

"resources": [
{
  "apiversion": "2018-05-01",
  "name" : "secrets",
  "type": 
    {
      "Microsoft.KeyVault/vaults",
      "Microsoft.Resources/deployment",
      "Microsoft.Subscription/subscriptions"
    }
  "properties": {
    "mode" : "Incremental",
    : {
      "deployment"
      "template"
      "templateLink"
    }
  }
},
contentVersion" : "1.0.0.0",
  "uri" : "[uri(parameters('_artifactsLocation'),
concat('./nested/sqlserver.json',
parameters('_artifactsLocationSasToken')))]"
},
"parameters": {
  "secret": {
    "reference": {
      "keyVault": {
        "id": "[resourceId(parameters('vaultSubscription'),
parameters('vaultResourceGroupName'),
'Microsoft.KeyVault/vaults',
parameters('vaultName'))]"
      },
      "secretName": "[parameters('secretName')]"
    }
  }
}
],

```

NEW QUESTION 61

DRAG DROP - (Topic 4)

You are deploying a new application that uses Azure virtual machines.

You plan to use the Desired State Configuration (DSC) extension on the virtual machines. You need to ensure that the virtual machines always have the same Windows features installed.

Which three actions should you perform in sequence? To answer, move the appropriate actions from the list of actions to the answer area and arrange them in the correct order.

Actions

- Load the file to Azure Files.
- Create a PowerShell configuration file.
- Create a YAML configuration file.
- Configure the Custom Script Extension on the virtual machines.
- Configure the DSC extension on the virtual machines.
- Load the file to Azure Blob storage.

➤

➤

Answer Area

- A. Mastered
- B. Not Mastered

Answer: A

Explanation:

Step 1: Create a PowerShell configuration file
 You create a simple PowerShell DSC configuration file.
 Step 2: Load the file to Azure Blob storage

Package and publish the module to a publically accessible blob container URL
Step 3: Configure the Custom Script Extension on the virtual machines.
The Custom Script Extension downloads and executes scripts on Azure virtual machines.

NEW QUESTION 65

- (Topic 4)

Your company is concerned that when developers introduce open source libraries, it creates licensing compliance issues. You need to add an automated process to the build pipeline to detect when common open source libraries are added to the code base. What should you use?

- A. Microsoft Visual SourceSafe
- B. PDM
- C. WhiteSource
- D. OWASP ZAP

Answer: C

Explanation:

WhiteSource is the leader in continuous open source software security and compliance management. WhiteSource integrates into your build process, irrespective of your programming languages, build tools, or development environments. It works automatically, continuously, and silently in the background, checking the security, licensing, and quality of your open source components against WhiteSource constantly-updated denitive database of open source repositories.

Azure DevOps integration with WhiteSource Bolt will enable you to:

- ? Detect and remedy vulnerable open source components.
- ? Generate comprehensive open source inventory reports per project or build.
- ? Enforce open source license compliance, including dependencies' licenses.
- ? Identify outdated open source libraries with recommendations to update.

References: <https://www.azuredevopslabs.com/labs/vstsextend/WhiteSource/>

NEW QUESTION 68

SIMULATION - (Topic 4)

You manage a website that uses an Azure SQL Database named db1 in a resource group named RG1lod11566895. You need to modify the SQL database to protect against SQL injection. To complete this task, sign in to the Microsoft Azure portal.

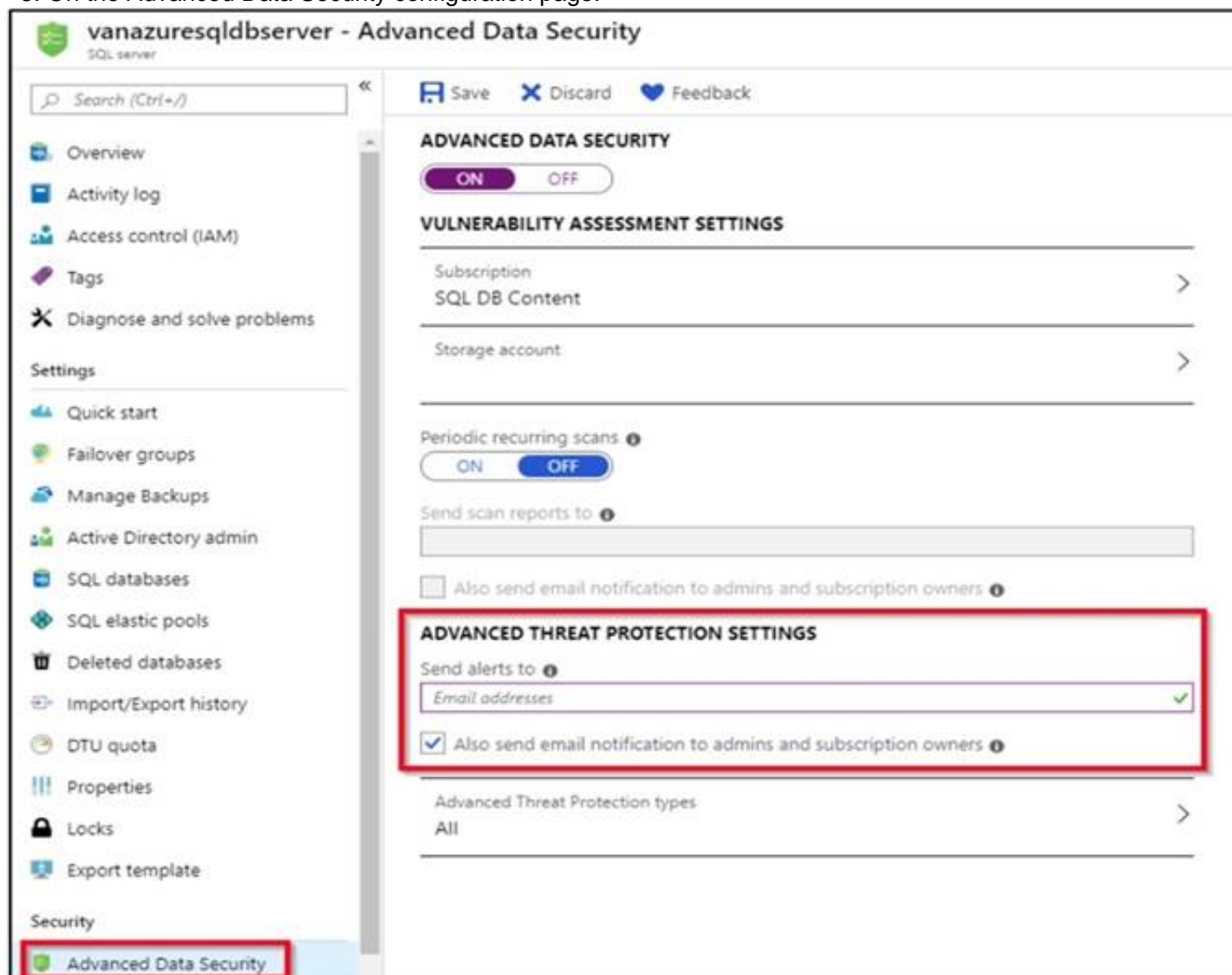
- A. Mastered
- B. Not Mastered

Answer: A

Explanation:

Set up Advanced Threat Protection in the Azure portal

- * 1. Sign into the Azure portal.
- * 2. Navigate to the configuration page of the server you want to protect. In the security settings, select Advanced Data Security.
- * 3. On the Advanced Data Security configuration page:



- * 4. Enable Advanced Data Security on the server.

Note: Advanced Threat Protection for Azure SQL Database detects anomalous activities indicating unusual and potentially harmful attempts to access or exploit databases. Advanced Threat Protection can identify Potential SQL injection, Access from unusual location or data center, Access from unfamiliar principal or potentially harmful application, and Brute force SQL credentials

NEW QUESTION 73

- (Topic 4)

Your company plans to use an agile approach to software development.

You need to recommend an application to provide communication between members of the development team who work in locations around the world. The applications must meet the following requirements:

? Provide the ability to isolate the members of different project teams into separate communication channels and to keep a history of the chats within those channels.

? Be available on Windows 10, Mac OS, iOS, and Android operating systems.

? Provide the ability to add external contractors and suppliers to projects.

? Integrate directly with Azure DevOps.

What should you recommend?

- A. Microsoft Project
- B. Bamboo
- C. Microsoft Lync
- D. Microsoft Teams

Answer: D

Explanation:

? Within each team, users can create different channels to organize their communications by topic. Each channel can include a couple of users or scale to thousands of users.

? Microsoft Teams works on Android, iOS, Mac and Windows systems and devices.

It also works in Chrome, Firefox, Internet Explorer 11 and Microsoft Edge web browsers.

? The guest-access feature in Microsoft Teams allows users to invite people outside their organizations to join internal channels for messaging, meetings and file sharing. This capability helps to facilitate business-to-business project management.

? Teams integrates with Azure DevOps.

References: <https://searchunifiedcommunications.techtarget.com/definition/Microsoft-Teams>

NEW QUESTION 77

- (Topic 4)

Your company develops an app for OS. All users of the app have devices that are members of a private distribution group in Microsoft Visual Studio App Center.

You plan to distribute a new release of the app.

You need to identify which certificate file you require to distribute the new release from App Center.

Which file type should you upload to App Center?

- A. .cer
- B. .pvk
- C. .pfx
- D. .p12

Answer: D

Explanation:

A successful IOS device build will produce an ipa file. In order to install the build on a device, it needs to be signed with a valid provisioning profile and certificate.

To sign the builds produced from a branch, enable code signing in the configuration pane and upload a provisioning profile (.mobileprovision) and a valid certificate (.p12), along with the password for the certificate.

References:

<https://docs.microsoft.com/en-us/appcenter/build/xamarin/ios/>

NEW QUESTION 80

- (Topic 4)

Note: This question is part of a series of questions that present the same scenario. Each question in the series contains a unique solution that might meet the stated goals. Some question sets might have more than one correct solution, while others might not have a correct solution.

After you answer a question in this section, you will NOT be able to return to it. As a result, these questions will not appear in the review screen.

You plan to create a release pipeline that will deploy Azure resources by using Azure Resource Manager templates. The release pipeline will create the following resources:

? Two resource groups

? Four Azure virtual machines in one resource group

? Two Azure SQL databases in other resource group

You need to recommend a solution to deploy the resources.

Solution: Create two standalone templates, each of which will deploy the resources in its respective group.

Does this meet the goal?

- A. Yes
- B. No

Answer: B

Explanation:

References: <https://docs.microsoft.com/en-us/azure/azure-resource-manager/resource-group-linked-templates>

NEW QUESTION 85

- (Topic 4)

You have an Azure Automation account that contains a webbook. The webbook is used to configure the application infrastructure of an Azure subscription.

You have a project in Azure DevOps named Project1. Project1 contains a repository that stores code for the webbook.

You need to ensure that every committed change to the code will update automatically and publish the webbook to Azure Automation.

What should you configure?

- A. the Connections settings for the Automation account

- B. the Service hooks settings for Project1
- C. the Source control settings for the Automation account
- D. the Service connections settings for Project1

Answer: C

NEW QUESTION 86

- (Topic 4)

Your company uses Service Now for incident management. You develop an application that runs on Azure.

The company needs to generate a ticket in Service Now when the application fails to authenticate.

Which Azure Log Analytics solution should you use?

- A. Automation & Control
- B. IT Service Management Connector (ITSM)
- C. Application ImiQ.hu Connector
- D. insight & Analytics

Answer: B

Explanation:

The IT Service Management Connector (ITSMC) allows you to connect Azure and a supported IT Service Management (ITSM) product/service.

ITSMC supports connections with the following ITSM tools:

? ServiceNow

? System Center Service Manager

? Provance

? Cherwell

With ITSMC, you can

? Create work items in ITSM tool, based on your Azure alerts (metric alerts, Activity Log alerts and Log Analytics alerts).

? Optionally, you can sync your incident and change request data from your ITSM tool to an Azure Log Analytics workspace.

References: <https://docs.microsoft.com/en-us/azure/azure-monitor/platform/itsmc-overview>

NEW QUESTION 90

- (Topic 4)

Your company uses Service Now for incident management. You develop an application that runs on Azure.

The company needs to generate a ticket in Service Now when the application fails to authenticate.

Which Azure Log Analytics solution should you use?

- A. Application Insights Connector
- B. Automation & Control
- C. IT Service Management Connector (ITSM)
- D. Insight & Analytics

Answer: C

Explanation:

The IT Service Management Connector (ITSMC) allows you to connect Azure and a supported IT Service Management (ITSM) product/service.

ITSMC supports connections with the following ITSM tools: ServiceNow

System Center Service Manager Provance

Cherwell

With ITSMC, you can

Create work items in ITSM tool, based on your Azure alerts (metric alerts, Activity Log alerts and Log Analytics alerts).

Optionally, you can sync your incident and change request data from your ITSM tool to an Azure Log Analytics workspace.

Reference:

<https://docs.microsoft.com/en-us/azure/azure-monitor/platform/itsmc-overview>

NEW QUESTION 91

DRAG DROP - (Topic 4)

You have an Azure Pipeline.

You need to store configuration values as variables.

At which four scopes can the variables be defined, and what is the precedence of the variables from the highest precedence to lowest precedence? To answer, move the appropriate scope from the list of scopes to the answer area and arrange them in the correct order.

Scopes	Answer Area
task	
job	
stage	
pipeline root	
pipeline settings UI	

>

<

↑

↓

- A. Mastered
- B. Not Mastered

Answer: A

Explanation:

Scopes	Answer Area
task	job
job	stage
stage	pipeline root
pipeline root	pipeline settings UI
pipeline settings UI	

NEW QUESTION 92

DRAG DROP - (Topic 4)

You have an Azure Kubernetes Service (AKS) cluster.

You need to deploy an application to the cluster by using Azure DevOps.

Which three actions should you perform in sequence? To answer, move the appropriate actions from the list of actions to the answer area and arrange them in the correct order.

Actions	Answer Area
Create a service account in the cluster.	
Create a service principal in Azure Active Directory (Azure AD).	
Add an Azure Function App for Container task to the deployment pipeline.	
Add a Helm package and deploy a task to the deployment pipeline.	
Add a Docker Compose task to the deployment pipeline.	
Configure RBAC roles in the cluster.	

- A. Mastered
- B. Not Mastered

Answer: A

Explanation:

You can set up a CI/CD pipeline to deploy your apps on a Kubernetes cluster with Azure DevOps by leveraging a Linux agent, Docker, and Helm.

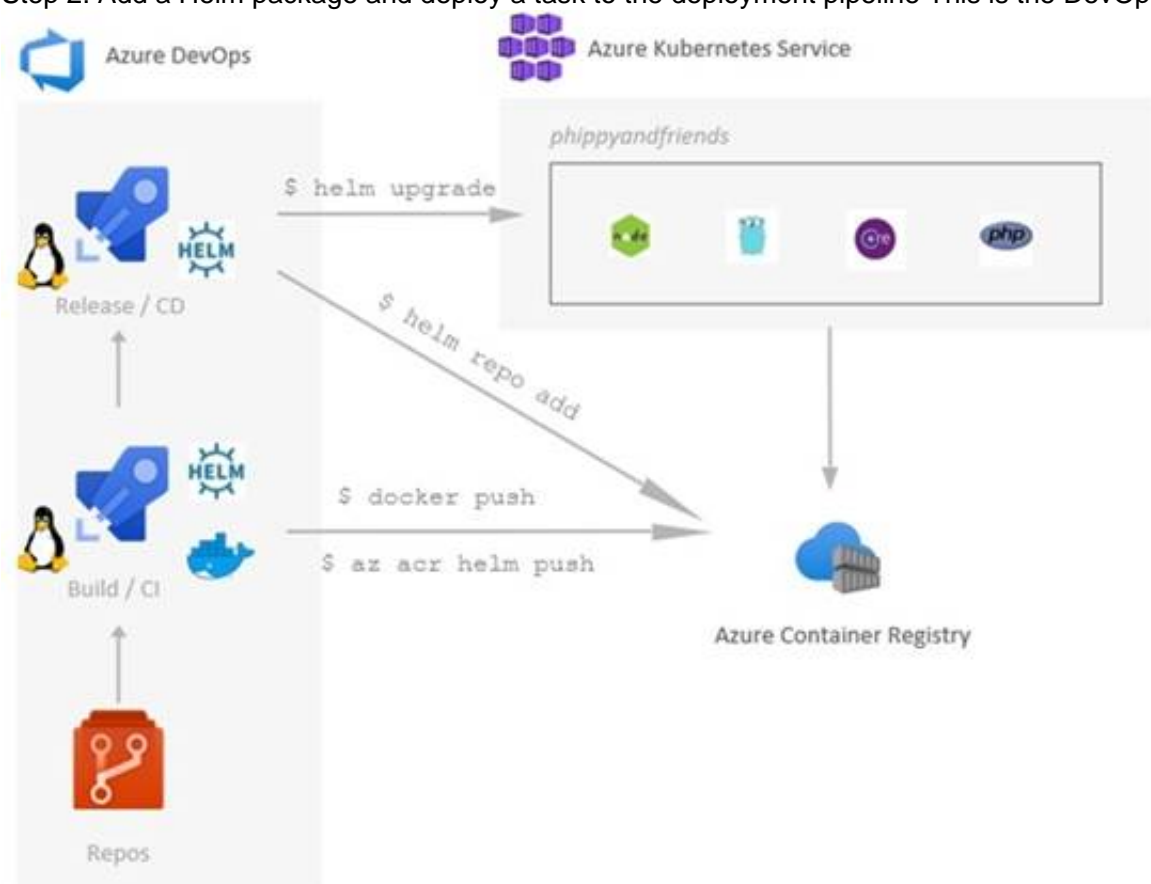
Step 1: Create a service principle in Azure Active Directory (Azure AD)

We need to assign 3 specific service principals with specific Azure Roles that need to interact with our ACR and our AKS.

Create a specific Service Principal for our Azure DevOps pipelines to be able to push and pull images and charts of our ACR.

Create a specific Service Principal for our Azure DevOps pipelines to be able to deploy our application in our AKS.

Step 2: Add a Helm package and deploy a task to the deployment pipeline This is the DevOps workflow with containers:



Step 3: Add a Docker Compose task to the deployment pipeline.

Dockerfile file is a script leveraged by Docker, composed of various commands (instructions) and arguments listed successively to automatically perform actions on a base image in order to create a new Docker image by packaging the app.

NEW QUESTION 95

SIMULATION - (Topic 4)

Your company plans to implement a new compliance strategy that will require all Azure web apps to be backed up every five hours. You need to back up an Azure web app named az400-11566895-main every five hours to an Azure Storage account in your resource group. To complete this task, sign in to the Microsoft Azure portal.

- A. Mastered
- B. Not Mastered

Answer: A

Explanation:

With the storage account ready, you can configure backs up in the web app or App Service.

? Open the App Service az400-11566895-main, which you want to protect, in the Azure Portal and browse to Settings > Backups. Click Configure and a Backup Configuration blade should appear.

? Select the storage account.

? Click + to create a private container. You could name this container after the web app or App Service.

? Select the container.

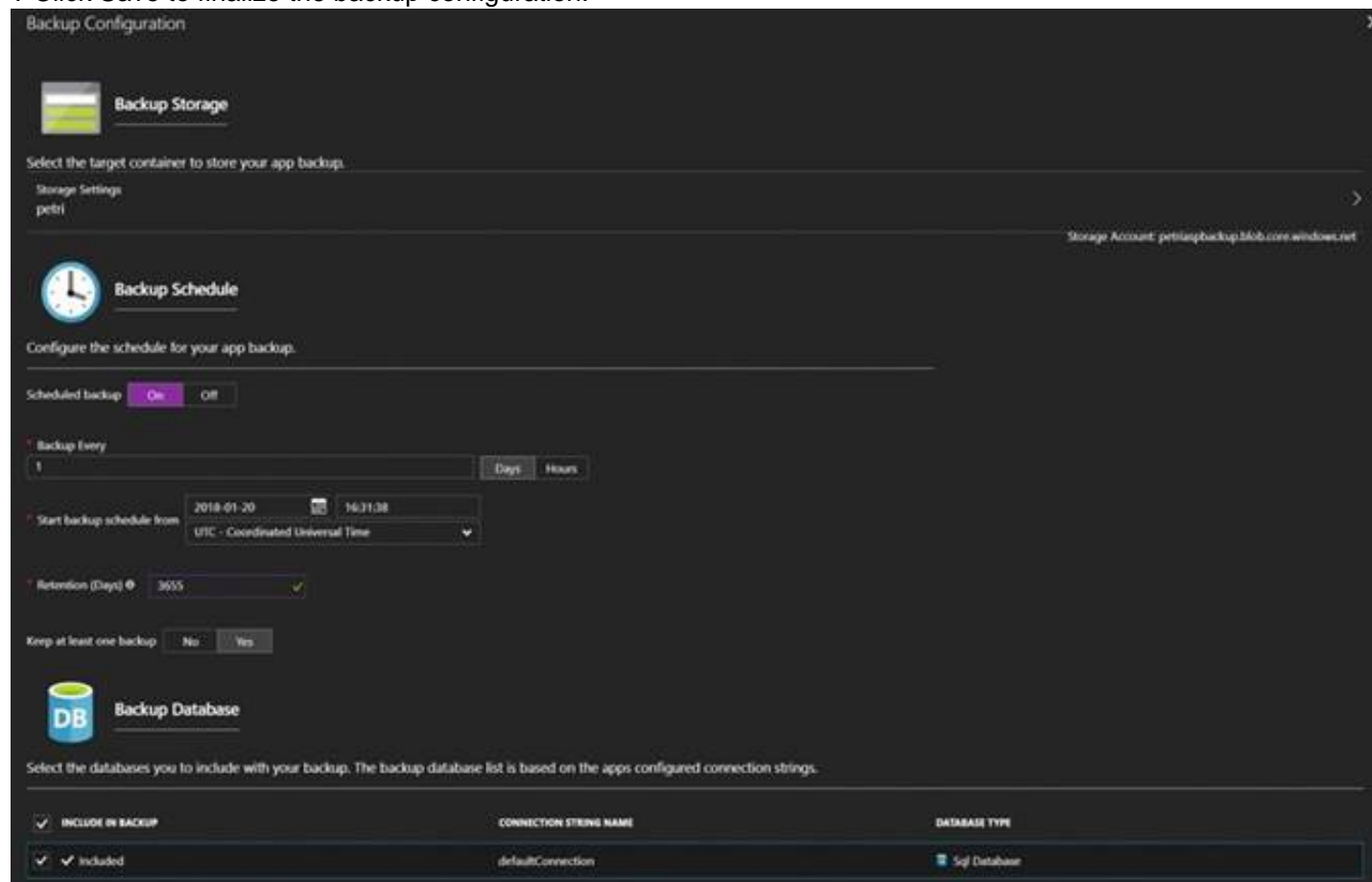
? If you want to schedule backups, then set Scheduled Backup to On and configure a schedule: every five hours

? Select your retention. Note that 0 means never delete backups.

? Decide if at least one backup should always be retained.

? Choose if any connected databases should be included in the web app backup.

? Click Save to finalize the backup configuration.



The screenshot shows the 'Backup Configuration' blade in the Azure portal. It is divided into three sections: 'Backup Storage', 'Backup Schedule', and 'Backup Database'.
1. 'Backup Storage': Shows 'petri' as the selected storage account and 'petri/az400-11566895-main' as the storage container.
2. 'Backup Schedule': The 'Scheduled backup' toggle is set to 'On'. The frequency is '1' hour. The start time is '2018-01-20 16:31:38' in 'UTC - Coordinated Universal Time'. The retention is set to '3655' days. The 'Keep at least one backup' toggle is set to 'Yes'.
3. 'Backup Database': A table lists databases to be backed up. The table has columns: 'INCLUDE IN BACKUP', 'CONNECTION STRING NAME', and 'DATABASE TYPE'. One entry is shown: 'Included' (checked), 'defaultConnection', and 'Sql Database'.

NEW QUESTION 96

- (Topic 4)

Note: This question is part of a series of questions that present the same scenario. Each question in the series contains a unique solution that might meet the stated goals. Some question sets might have more than one correct solution, while others might not have a correct solution.

After you answer a question in this section, you will NOT be able to return to it. As a result, these questions will not appear in the review screen.

You need to recommend an integration strategy for the build process of a Java application. The solution must meet the following requirements:

? The build must access an on-premises dependency management system.

? The build outputs must be stored as Server artifacts in Azure DevOps.

? The source code must be stored in a Git repository in Azure DevOps.

Solution: Configure the build pipeline to use a Microsoft-hosted agent pool running the Windows Server 2019 with Visual Studio 2019 image. Include the Java Tool Installer task in the build pipeline.

Does this meet the goal?

- A. Yes
- B. No

Answer: A

Explanation:

To build and deploy Windows, Azure, and other Visual Studio solutions you'll need at least one Windows agent. Windows agents can also build Java and Android apps.

The Azure Pipelines agent pool offers several virtual machine images to choose from, each including a broad range of tools and software. One such image is Windows Server 2019 with Visual Studio 2019.

Reference:

<https://docs.microsoft.com/en-us/azure/devops/pipelines/agents/v2-windows?view=azure-devops>

<https://docs.microsoft.com/en-us/azure/devops/pipelines/agents/hosted?view=azure-devops&tabs=yaml>

NEW QUESTION 98

SIMULATION - (Topic 4)

You have a web app that connects to an Azure SQL Database named db1.

You need to configure db1 to send Query Store runtime statistics to Azure Log Analytics. To complete this task, sign in to the Microsoft Azure portal.

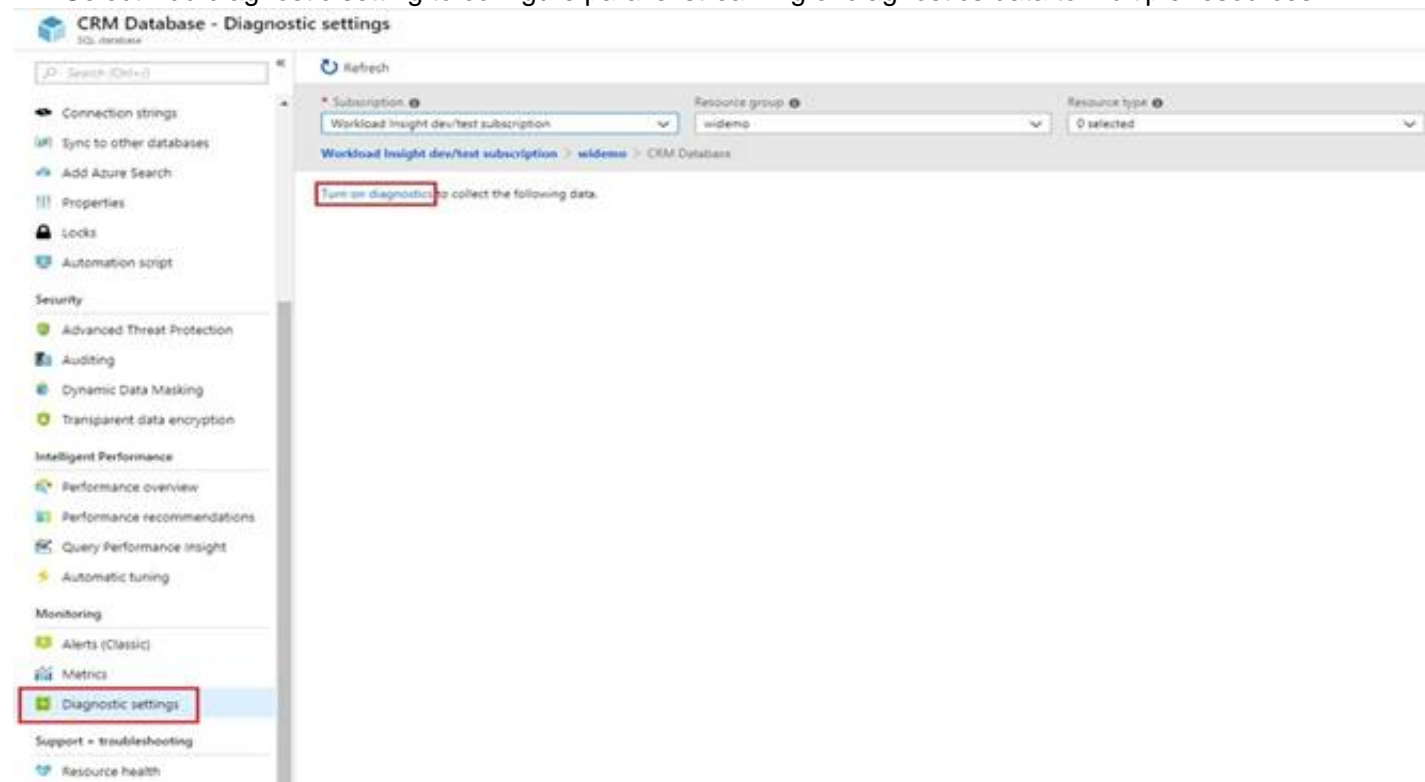
- A. Mastered
- B. Not Mastered

Answer: A

Explanation:

To enable streaming of diagnostic telemetry for a single or a pooled database, follow these steps:

- * 1. Go to Azure SQL database resource.
- * 2. Select Diagnostics settings.
- * 3. Select Turn on diagnostics if no previous settings exist, or select Edit setting to edit a previous setting. You can create up to three parallel connections to stream diagnostic telemetry.
- * 4. Select Add diagnostic setting to configure parallel streaming of diagnostics data to multiple resources.



Graphical user

- * 5. Enter a setting name for your own reference.
- * 6. Select a destination resource for the streaming diagnostics data: Archive to storage account, Stream to an event hub, or Send to Log Analytics.
- * 7. For the standard, event-based monitoring experience, select the following check boxes for database diagnostics log telemetry: Query Store Runtime Statistics

Diagnostics settings

Save

Discard

Delete

* Name

service

☐ Archive to a storage account

☐ Stream to an event hub

☒ Send to Log Analytics

Subscription

Workload Insight dev/test subscription

Log Analytics Workspace

sqlanalytics356 (westcentralus)

LOG

☒ SQLInsights

☒ AutomaticTuning

☒ QueryStoreRuntimeStatistics

☒ QueryStoreWaitStatistics

☒ Errors

☒ DatabaseWaitStatistics

☒ Timeouts

☒ Blocks

☒ Deadlocks

METRIC

☒ Basic

- * 8. For an advanced, one-minute-based monitoring experience, select the check box for Basic metrics.
- * 9. Select Save.

NEW QUESTION 102

- (Topic 4)

Note: This question is part of a series of questions that present the same scenario. Each question in the series contains a unique solution that might meet the stated goals. Some question sets might have more than one correct solution, while others might not have a correct solution.

After you answer a question in this section, you will NOT be able to return to it. As a result, these questions will not appear in the review screen.

You need to recommend an integration strategy for the build process of a Java application. The solution must meet the following requirements:

- The builds must access an on-premises dependency management system.
- The build outputs must be stored as Server artifacts in Azure DevOps.
- The source code must be stored in a Git repository in Azure DevOps.

Solution: Configure the build pipeline to use a Hosted Ubuntu agent pool. Include the Java Tool Installer task in the build pipeline. Does this meet the goal?

- A. Yes
- B. No

Answer: A

NEW QUESTION 104

- (Topic 4)

You use GitHub for source control and Azure Boards for project management. GitHub and Azure Boards are integrated.

You plan to create a pull request in GitHub.

You need to automatically link the request to an existing Azure Boards work item by using the text of AB#<WORKITEMNUMBER>.

To which two elements can you add the text? Each correct answer presents a complete solution.

NOTE: Each correct selection is worth one point.

- A. milestone
- B. comment
- C. title
- D. description
- E. label

Answer: CD

Explanation:

You can add the text "AB#<WORKITEMNUMBER>" to the title or description of the pull request in GitHub, which will automatically link the request to an existing Azure Boards work item with that number.

Reference:

Azure DevOps Docs: Link a work item to a pull request <https://docs.microsoft.com/en-us/azure/devops/repos/git/pull-requests?view=azure-devops#link-a-work-item-to-a-pull-request>

GitHub Docs: Creating a pull request <https://docs.github.com/en-us/github/collaborating-with-issues-and-pull-requests/creating-a-pull-request>

NEW QUESTION 109

- (Topic 4)

Note: This question is part of a series of questions that present the same scenario. Each question in the series contains a unique solution that might meet the stated goals. Some question sets might have more than one correct solution, while others might not have a correct solution.

After you answer a question in this section, you will NOT be able to return to it. As a result, these questions will not appear in the review screen.

You use Azure Pipelines to build and test a React.js application. You have a pipeline that has a single job.

You discover that installing JavaScript packages from 9pm takes approximately five minutes each time you run the pipeline.

You need to recommend a solution to reduce the pipeline execution time. Solution: You recommend using pipeline artifacts.

Does this meet the goal?

- A. Yes
- B. No

Answer: B

Explanation:

Pipeline artifacts are a way to persist build outputs, test results, and other files generated during a pipeline run. They allow you to share data between stages, jobs, and pipelines,

and to persist data for longer than the lifetime of a pipeline run. While artifacts can be useful for sharing data between pipeline runs and reducing the time required to download dependencies, they are not a solution for reducing the time required to install JavaScript packages from 9pm during a pipeline run.

The solution of reducing the pipeline execution time could be achieved by using package caching, which allows you to store and reuse 9pm packages from previous pipeline runs. There are several package caching options available for Azure Pipelines, including the 9pm task, the 9pm cache task, and the 9pm ci task. All of these options allow you to configure caching for your 9pm packages, which can significantly reduce the time required to install packages during subsequent pipeline runs.

Another solution could be using a dedicated agent that has those packages already installed, this way the pipeline doesn't have to install them again.

You can find more information on package caching by following this link <https://docs.microsoft.com/en-us/azure/devops/pipelines/tasks/package/npm-cache?view=azure-devops>

NEW QUESTION 114

DRAG DROP - (Topic 4)

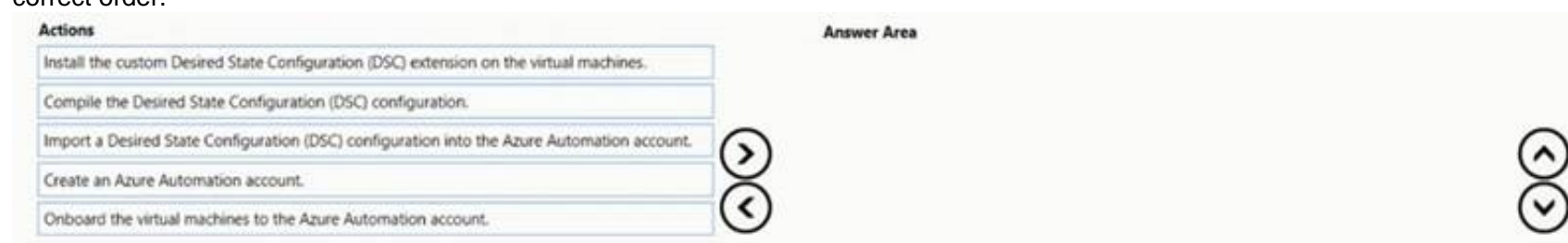
You have an Azure DevOps organization named Contoso.

You have 10 Azure virtual machines that run Windows Server 2019. The virtual machines host an application that you build and deploy by using Azure Pipelines.

Each virtual machine has the Web Server (IIS) role installed and configured.

You need to ensure that the web server configurations pin the virtual machines is maintained automatically. The solution must provide centralized management of the configuration settings and minimize management overhead.

Which four actions should you perform in sequence? To answer, move the appropriate actions from the list of actions to the answer area and arrange them in the correct order.



- A. Mastered
- B. Not Mastered

Answer: A

Explanation:

Step1: Create an Azure Automation account. An Azure Automation account is required.

Step 2: Install the custom Desired State Configuration (DSC) extension on the virtual machines

Under the hood, and without an administrator having to remote into a VM, the Azure VM Desired State Configuration extension registers the VM with Azure Automation State Configuration.

Step 3: Onboard the virtual machines to the Azure Automation account.

Step 4: Complete the Desired State Configuration (DSC) configuration. Create a DSC configuration.

NEW QUESTION 115

HOTSPOT - (Topic 4)

You company uses Azure DevOps to deploy infrastructures to Azure. Pipelines are developed by using YAML. You execute a pipeline and receive the results in the web portal for Azure Pipelines as shown in the following exhibit.

FN

Fast Track

+

Overview

Boards

Repos

Pipelines

Pipelines

Environments

Releases

Library

Task groups

Deployment groups

WhiteSource Bolt

Test Plans

Artifacts

Jobs in run #20191120.1

Fast Track

build vm

initialize build

7s

Initialize job

<1s

Checkout

4s

CmdLine

2s

Post-job: Ccheckout

<1s

Finalize Job

<1s

deploy_to_dev

deploy_to_dev_server

2s

deploy_to_uat

deploy_to_uat_server

2s

Finalize build

Report build status

<1s

initial_build

1 Pool: Azure Pipelines

2 Image: Ubuntu-18.04

3 Agent: Hosted Agent

4 Started: Just now

5 Duration: 7s

6

7 Job preparation parameters

Use the drop-down menus to select the answer choice that completes each statement based on the information presented in the graphic.
NOTE: Each correct selection is worth one point.

The pipeline contains

▼

one stage

two stages

three stages

four stages

five stages

Build_vm contains

▼

one job

two jobs

three jobs

four jobs

five jobs

- A. Mastered
- B. Not Mastered

Answer: A

Explanation:

The pipeline contains

	▼
one stage	
two stages	
three stages	
four stages	
five stages	

Build_vm contains

	▼
one job	
two jobs	
three jobs	
four jobs	
five jobs	

NEW QUESTION 119

DRAG DROP - (Topic 4)

You are creating a container for an ASP.NET Core app.

You need to create a Dockerfile file to build the image. The solution must ensure that the size of the image is minimized.

How should you configure the file? To answer, drag the appropriate values to the correct targets. Each value must be used once, more than once, or not at all. You may need to drag the split bar between panes or scroll to view content.

NOTE: Each correct selection is worth one point.

Values	Answer Area
dotnet publish -c Release -o out	FROM <input type="text"/> As build-env
dotnet restore	COPY . /app/
microsoft/dotnet:2.2-aspnetcore-runtime	WORKDIR /app
Microsoft/dotnet:2.2-sdk	RUN <input type="text"/>
	FROM <input type="text"/>
	COPY --from=build-env /app/out /app
	WORKDIR /app
	ENTRYPOINT ["dotnet", "MvcMovie.dll"]

- A. Mastered
- B. Not Mastered

Answer: A

Explanation:

Box 1: microsoft.com/dotnet/sdk:2.3

The first group of lines declares from which base image we will use to build our container on top of. If the local system does not have this image already, then docker will automatically try and fetch it. The mcr.microsoft.com/dotnet/core/sdk:2.1 comes packaged with the .NET core 2.1 SDK installed, so it's up to the task of building ASP .NET core projects targeting version 2.1

Box 2: dotnet restore

The next instruction changes the working directory in our container to be /app, so all commands following this one execute under this context.

COPY *.csproj ./ RUN dotnet restore

Box 3: microsoft.com/dotnet/2.2-aspnetcore-runtime

When building container images, it's good practice to include only the production payload and its dependencies in the container image. We don't want the .NET core SDK included in our final image because we only need the .NET core runtime, so the dockerfile is written to use a temporary container that is packaged with the SDK called build-env to build the app.

NEW QUESTION 120

DRAG DROP - (Topic 4)

Your company has an Azure subscription named Subscription1. Subscription1 is associated to an Azure Active Directory tenant named contoso.com.

You need to provision an Azure Kubernetes Services (AKS) cluster in Subscription1 and set the permissions for the cluster by using RBAC roles that reference the identities in contoso.com.

Which three objects should you create in sequence? To answer, move the appropriate objects from the list of objects to the answer area and arrange them in the correct order.

Answer Area

Objects

a system-assigned managed identity

a cluster

an application registration in contoso.com

an RBAC binding

- A. Mastered
- B. Not Mastered

Answer: A

Explanation:

Step 1: Create an AKS cluster

Step 2: a system-assigned managed identity

To create an RBAC binding, you first need to get the Azure AD Object ID.

? Sign in to the Azure portal.

? In the search field at the top of the page, enter Azure Active Directory.

? Click Enter.

? In the Manage menu, select Users.


? In the name field, search for your account.

? In the Name column, select the link to your account.


? In the Identity section, copy the Object ID.

Identity [edit](#)



Name



User name

@hotmail.com

Object ID

Step 3: a RBAC binding

NEW QUESTION 124

HOTSPOT - (Topic 4)

You have an Azure Kubernetes Service (AKS) pod.

You need to configure a probe to perform the following actions: Confirm that the pod is responding to service requests.

Check the status of the pod four times a minute. Initiate a shutdown if the pod is unresponsive.

How should you complete the YAML configuration file? To answer, select the appropriate options in the answer area.

NOTE: Each correct selection is worth one point.

```
apiVersion: v1
kind: Pod
metadata:
  labels:
    test: readiness-and-liveness
  name: readiness-http
spec:
  containers:
  - name: container1
    image: k8s.gcr.io/readiness-and-liveness
    args:
    - /server
```

	▼
livenessProbe:	
readinessProbe:	
ShutdownProbe:	
startupProbe:	

```
httpGet:
  path: /checknow
  port: 8123
  httpHeaders:
  - name: Custom-Header
    value: CheckNow
```

	▼
initialDelaySeconds: 15	
periodSeconds: 15	
timeoutSeconds: 15	

- A. Mastered
 B. Not Mastered

Answer: A

Explanation:

Graphical user interface, text, application Description automatically generated

Box 1: readiness Probe:

For containerized applications that serve traffic, you might want to verify that your container is ready to handle incoming requests. Azure Container Instances supports readiness probes to include configurations so that your container can't be accessed under certain conditions.

NEW QUESTION 127

- (Topic 4)

Note: This question is part of a series of questions that present the same scenario. Each question in the series contains a unique solution that might meet the stated goals. Some question sets might have more than one correct solution, while others might not have a correct solution.

After you answer a question in this section, you will NOT be able to return to it. As a result these questions will not appear in the review screen.

You have an approval process that contains a condition. The condition requires that releases be approved by a team leader before they are deployed.

You have a policy stating that approvals must occur within eight hours.

You discover that deployments fail if the approvals take longer than two hours.

You need to ensure that the deployments only fail if the approvals take longer than eight hours.

Solution: From Pre-deployment conditions, you modify the Timeout setting for pre-deployment approvals.

Does this meet the goal?

- A. Yes
 B. No

Answer: B

Explanation:

Use a gate instead of an approval instead.

References: <https://docs.microsoft.com/en-us/azure/devops/pipelines/release/approvals/gates>

NEW QUESTION 129

- (Topic 4)

Note: This question is part of a series of questions that present the same scenario. Each question in the series contains a unique solution that might meet the stated goals. Some question sets might have more than one correct solution, while others might not have a correct solution.

After you answer a question in this section, you will NOT be able to return to it. As a result, these questions will not appear in the review screen.

You have an approval process that contains a condition. The condition requires that releases be approved by a team leader before they are deployed.

You have a policy stating that approvals must occur within eight hours.

You discover that deployments fail if the approvals take longer than two hours.

You need to ensure that the deployments only fail if the approvals take longer than eight hours.

Solution: From Post-deployment conditions, you modify the Time between re-evaluation of gates option.

Does this meet the goal?

- A. Yes
- B. No

Answer: B

Explanation:

Use a gate From Pre-deployment conditions instead.
References: <https://docs.microsoft.com/en-us/azure/devops/pipelines/release/approvals/gates>

NEW QUESTION 133

HOTSPOT - (Topic 4)
Your company has an Azure subscription.
The company requires that all resource group in the subscription have a tag named organization set to a value of Contoso.
You need to implement a policy to meet the tagging requirement.
How should you complete the policy? To answer, select the appropriate options in the answer area.
NOTE: Each correct selection is worth one point.

```
{
  "policyRule": {
    "if": {
      "allOf": [
        {
          "field": "type",
          "equals":
            ,
          {
            "not": {
              "field": "tags['organization']",
              "equals": "Contoso"
            }
          }
        ]
      ],
      "then": {
        "effect":
          ,
        "details": [
          {
            "field": "tags['organization']",
            "value": "Contoso"
          }
        ]
      }
    }
  }
}
```

- A. Mastered
- B. Not Mastered

Answer: A

Explanation:

Box 1: " Microsoft.Resources/subscriptions/resourceGroups"
Box 2: "Deny",
Sample - Enforce tag and its value on resource groups
,
"policyRule": { "if": {
"allOf": [
{
"field": "type",
"equals": "Microsoft.Resources/subscriptions/resourceGroups"
},
{
"not": {
"field": "[concat('tags[' ,parameters('tagName'), ']]'", "equals": "[parameters('tagValue')]"
}
}
]
},
"then": {
"effect": "deny"
}
}

```
}  
}  
}  
}
```

References:

<https://docs.microsoft.com/en-us/azure/governance/policy/samples/enforce-tag-on-resource-groups>

NEW QUESTION 135

- (Topic 4)

Your company creates a new Azure DevOps team. D18912E1457D5D1DDCBD40AB3BF70D5D

You plan to use Azure DevOps for sprint planning.

You need to visualize the flow of your work by using an agile methodology. Which Azure DevOps component should you use?

- A. Kanban boards
- B. sprint planning
- C. delivery plans
- D. portfolio backlogs

Answer: A

Explanation:

Customizing Kanban boards

To maximize a team's ability to consistently deliver high quality software, Kanban emphasize two main practices. The first, visualize the flow of work, requires you to map your team's workflow stages and configure your Kanban board to match. Your Kanban board turns your backlog into an interactive signboard, providing a visual flow of work.

Reference: <https://azuredevopslabs.com/labs/azuredevops/agile/>

NEW QUESTION 137

- (Topic 4)

Note: This question is part of a series of questions that present the same scenario. Each question in the series contains a unique solution that might meet the stated goals. Some question sets might have more than one correct solution, while others might not have a correct solution.

After you answer a question in this section, you will NOT be able to return to it. As a result, these questions will not appear in the review screen.

You have an Azure DevOps project.

Your build process creates several artifacts.

You need to deploy the artifacts to on-premises servers.

Solution: You deploy an Octopus Deploy server. You deploy a polled Tentacle agent to an on-premises server. You add an Octopus task to the deployment pipeline.

Does this meet the goal?

- A. Yes
- B. No

Answer: B

Explanation:

Instead you should deploy an Azure self-hosted agent to an on-premises server.

Note: To build your code or deploy your software using Azure Pipelines, you need at least one agent.

If your on-premises environments do not have connectivity to a Microsoft-hosted agent pool (which is typically the case due to intermediate firewalls), you'll need to manually configure a self-hosted agent on on-premises computer(s).

Reference:

<https://docs.microsoft.com/en-us/azure/devops/pipelines/agents/agents?view=azure-devops>

NEW QUESTION 141

- (Topic 4)

Note: This question is part of a series of questions that present the same scenario. Each question in the series contains a unique solution that might meet the stated goals. Some question sets might have more than one correct solution, while others might not have a correct solution.

After you answer a question in this section, you will NOT be able to return to it. As a result, these questions will not appear in the review screen.

You integrate a cloud-hosted Jenkins server and a new Azure Dev Ops deployment. You need Azure Dev Ops to send a notification to Jenkins when a developer commits

changes to a branch in Azure Repos.

Solution: You create an email subscription to an Azure DevOps notification. Does this meet the goal?

- A. Yes
- B. NO

Answer: B

Explanation:

You can create a service hook for Azure DevOps Services and TFS with Jenkins.

References:

<https://docs.microsoft.com/en-us/azure/devops/service-hooks/services/jenkins>

NEW QUESTION 142

- (Topic 4)

You have an Azure DevOps organization named Contoso, an Azure DevOps project named Project1, an Azure subscription named Sub1, and an Azure key vault named vault1.

You need to ensure that you can reference the values of the secrets stored in vault1 in all the pipelines of Project1. The solution must prevent the values from being stored in the pipelines. What should you do?

- A. Create a variable group in Project1.

- B. Add a secure file to Project1.
- C. Modify the security settings of the pipelines.
- D. Configure the security policy of Contoso.

Answer: A

Explanation:

Use a variable group to store values that you want to control and make available across multiple pipelines.

References:

<https://docs.microsoft.com/en-us/azure/devops/pipelines/library/variable-groups> <https://docs.microsoft.com/en-us/azure/devops/pipelines/library/variable-groups?view=azure-devops&tabs=yaml#link-secrets-from-an-azure-key-vault>

NEW QUESTION 145

- (Topic 4)

You use GitHub for source control and project-related discussions.

You receive a notification when an entry is made to any team discussion.

You need to ensure that you receive email notifications only for discussions in which you commented or in which you are mentioned.

Which two Notifications settings should you clear? Each correct answer presents part of the solution.

NOTE: Each correct selection is worth one point.

- A. Participating
- B. Automatically watch repositories
- C. Automatically watch teams
- D. Watching

Answer: BD

NEW QUESTION 148

- (Topic 4)

You plan to publish build artifacts by using an Azure pipeline.

You need to create an .artifactignore file that meets the following requirements:

- Includes all files in the build output folder and all subfolders
- Excludes files that have the .dll extension What should you include in the file?

- A.

```
./**
!*.dll
```
- B.

```
**/*
!*.dll
```
- C.

```
*/**
*.dll
```
- D.

```
**/*
#*.dll
```

- A. Option A
- B. Option B
- C. Option C
- D. Option D

Answer: B

NEW QUESTION 151

- (Topic 3)

You need to meet the technical requirements for monitoring App1. What should you use?

- A. Splunk
- B. Azure Application Insights
- C. Azure Advisor
- D. App Service logs

Answer: B

NEW QUESTION 152

- (Topic 2)

In Azure DevOps, you create Project3.

You need to meet the requirements of the project. What should you do first?

- A. From Azure DevOps, create a service endpoint.
- B. From Sonar Qube, obtain an authentication token.
- C. From Azure DevOps, modify the build definition.
- D. From Sonar Qube , create a project.

Answer: A

Explanation:

The first thing to do is to declare your Sonar Qube server as a service endpoint in your VSTS/DevOps project settings.

References: <https://docs.sonarqube.org/display/SCAN/Analyzing+with+SonarQube+Extension+for+vsts-> TFS

NEW QUESTION 155

HOTSPOT - (Topic 1)

Where should the build and release agents for the investment planning application suite run? To answer, select the appropriate options in the answer area.

NOTE: Each correct selection is worth one point.

Build agent:

Release agent:

- A. Mastered
- B. Not Mastered

Answer: A

Explanation:

Box 1: A source control system

A source control system, also called a version control system, allows developers to collaborate on code and track changes. Source control is an essential tool for multi- developer projects.

Box 2: A hosted service

To build and deploy Xcode apps or Xamarin.iOS projects, you'll need at least one macOS agent. If your pipelines are in Azure Pipelines and a Microsoft-hosted agent meets your needs, you can skip setting up a self-hosted macOS agent.

Scenario: The investment planning applications suite will include one multi-tier web application and two iOS mobile applications. One mobile application will be used by employees; the other will be used by customers.

References:

<https://docs.microsoft.com/en-us/azure/devops/pipelines/agents/v2-osx?view=azure-devops>

NEW QUESTION 157

- (Topic 1)

What should you use to implement the code quality restriction on the release pipeline for the investment planning applications suite?

- A. a trigger
- B. a pre deployment approval
- C. a post-deployment approval
- D. a deployment gate

Answer: B

NEW QUESTION 160

HOTSPOT - (Topic 1)

How should you confrere the release retention policy for the investment planning depletions suite? To answer, select the appropriate options in the answer area.

NOTE: Each correct selection is worth one point.

Required secrets:

▼
Certificate
Personal access token
Shared Access Authorization token
Username and password

Storage location:

▼
Azure Data Lake
Azure Key Vault
Azure Storage with HTTP access
Azure Storage with HTTPS access

- A. Mastered
B. Not Mastered

Answer: A

Explanation:

Every request made against a storage service must be authorized, unless the request is for a blob or container resource that has been made available for public or signed access. One option for authorizing a request is by using Shared Key.

Scenario: The mobile applications must be able to call the share pricing service of the existing retirement fund management system. Until the system is upgraded, the service will only support basic authentication over HTTPS.

The investment planning applications suite will include one multi-tier web application and two iOS mobile application. One mobile application will be used by employees; the other will be used by customers.

References: <https://docs.microsoft.com/en-us/rest/api/storageservices/authorize-with-shared-key>

NEW QUESTION 163

- (Topic 4)

After you answer a question in this section, you will NOT be able to return to it. As a result, these questions will not appear in the review screen.

You use Azure Pipelines to build and test a React js application. You have a pipeline that has a single job.

You discover that installing JavaScript packages from npm takes approximately five minutes each time you run the pipeline.

You need to recommend a solution to reduce the pipeline execution time.

Solution: You recommend defining a container job that uses a custom container that has the JavaScript packages preinstalled.

Does this meet the goal?

- A. Yes
B. No

Answer: B

Explanation:

Instead enable pipeline caching.

Note:

npm-cache is a command line utility that caches dependencies installed via npm, bower, jspm and composer.

It is useful for build processes that run [npm|bower|composer|jspm] install every time as part of their build process. Since dependencies don't change often, this often means slower build times. npm-cache helps alleviate this problem by caching previously installed dependencies on the build machine.

Reference: <https://www.npmjs.com/package/npm-cache>

NEW QUESTION 168

- (Topic 4)

After you answer a question in this section, you will NOT be able to return to it. As a result, these questions will not appear in the review screen.

You use Azure Pipelines to build and test a React js application. You have a pipeline that has a single job.

You discover that installing JavaScript packages from npm takes approximately five minutes each time you run the pipeline.

You need to recommend a solution to reduce the pipeline execution time. Solution: You recommend enabling pipeline caching.

Does this meet the goal?

- A. Yes
B. No

Answer: A

Explanation:

npm-cache is a command line utility that caches dependencies installed via npm, bower, jspm and composer.

It is useful for build processes that run [npm|bower|composer|jspm] install every time as part of their build process. Since dependencies don't change often, this often means slower build times. npm-cache helps alleviate this problem by caching previously installed dependencies on the build machine.

Reference: <https://www.npmjs.com/package/npm-cache>

NEW QUESTION 172

- (Topic 4)

You are designing a strategy to monitor the baseline metrics of Azure virtual machines that run Windows Server. You need to collect detailed data about the processes running in the guest operating system. Which two agents should you deploy? Each correct answer presents part of the solution. NOTE: Each correct selection is worth one point.

- A. the Dependency agent
- B. the Azure Network Watcher Agent for Windows
- C. the Telegraf agent
- D. the Azure Log Analytics agent

Answer: AD

Explanation:

The following table provide a quick comparison of the Azure Monitor agents for Windows.

	Azure Monitor agent (preview)	Diagnostics extension (WAD)	Log Analytics agent	Dependency agent
Environments supported	Azure	Azure	Azure Other cloud On-premises	Azure Other cloud On-premises
Agent requirements	None	None	None	Requires Log Analytics agent
Data collected	Event Logs Performance	Event Logs ETW events Performance File based logs IIS logs .NET app logs Crash dumps Agent diagnostics logs	Event Logs Performance File based logs IIS logs Insights and solutions Other services	Process dependencies Network connection metrics
Data sent to	Azure Monitor Logs Azure Monitor Metrics	Azure Storage Azure Monitor Metrics Event Hub	Azure Monitor Logs	Azure Monitor Logs (through Log Analytics agent)

Reference:

<https://docs.microsoft.com/en-us/azure/azure-monitor/platform/agents-overview>

NEW QUESTION 173

- (Topic 4)

You have a project in Azure DevOps named Project1. Project1 contains a build pipeline named Pipe1 that builds an application named Appl.

You have an agent pool named Pool1 that contains a Windows Server 2019-based self-hosted agent. Pipe1 uses Pool1.

You plan to implement another project named Project2. Project2 will have a build pipeline named Pipe2 that builds an application named App2.

App1 and App2 have conflicting dependencies.

You need to minimize the possibility that the two build pipelines will conflict with each other. The solution must minimize infrastructure costs.

What should you do?

- A. Create two container jobs.
- B. Change the self-hosted agent to use Red Hat Enterprise Linux (RHEL) 9.
- C. Add another self-hosted agent
- D. Add a Docker Compose task to the build pipelines.

Answer: A

NEW QUESTION 175

- (Topic 4)

Your team uses an agile development approach.

You need to recommend a branching strategy for the team's Git repository. The strategy must meet the following requirements.

Provide the ability to work on multiple independent tasks in parallel. Ensure that checked-in code remains in a releasable state always. Ensure that new features can be abandoned at any time. Encourage experimentation.

What should you recommend?

- A. a single long-running branch
- B. multiple long-running branches
- C. a single fork per team member
- D. a single-running branch with multiple short-lived topic branches

Answer: D

NEW QUESTION 177

- (Topic 4)

You have a web app hosted on Azure App Service. The web app stores data in an Azure SQL database.

You need to generate an alert when there are 10,000 simultaneous connections to the database. The solution must minimize development effort. Which option should you select in the Diagnostics settings of the database?

- A. Send to Log Analytics
- B. Stream to an event hub
- C. Archive to a storage account

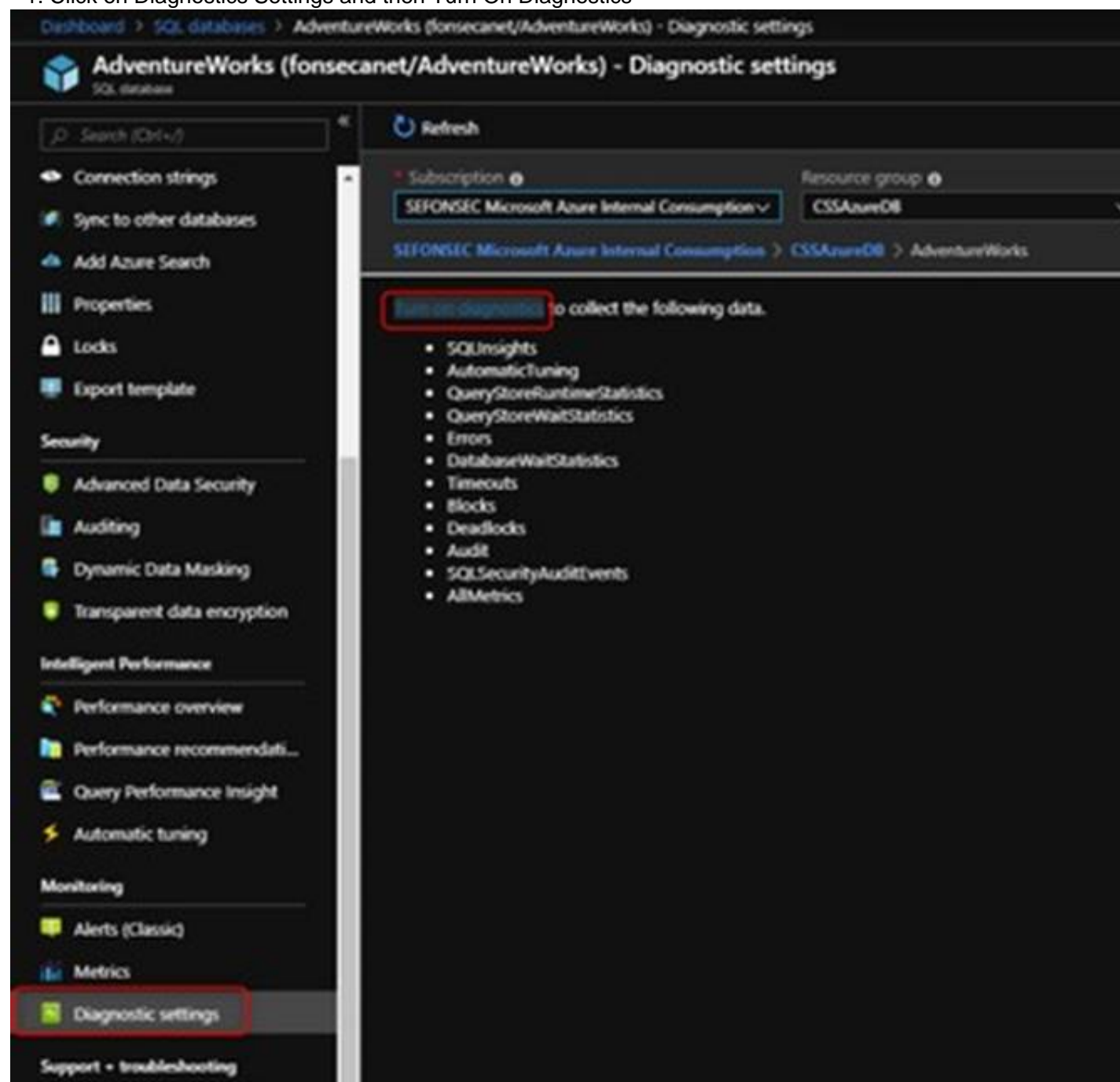
Answer: A

Explanation:

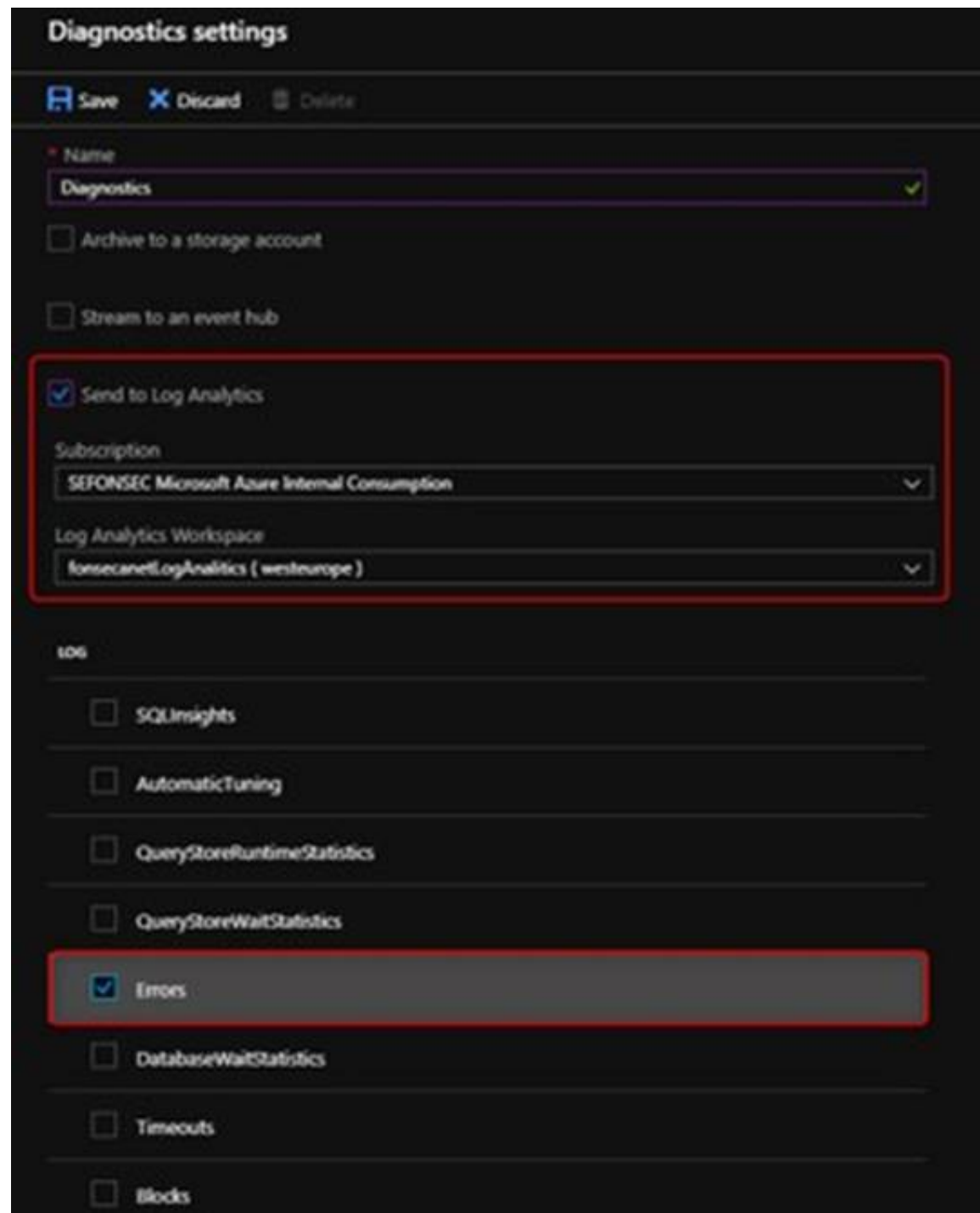
ENABLE DIAGNOSTICS TO LOG ANALYTICS

This configuration is done PER DATABASE

* 1. Click on Diagnostics Settings and then Turn On Diagnostics



* 2. Select to Send to Log Analytics and select the Log Analytics workspace. For this sample I will selected only Errors



Graphical user interface Description automatically generated with medium confidence

Reference:
<https://techcommunity.microsoft.com/t5/azure-database-support-blog/azure-sql-db-and-log-analytics-better-together-part-1/ba-p/794833>

NEW QUESTION 181

- (Topic 4)

Note: This question is part of a series of questions that present the same scenario. Each question in the series contains a unique solution that might meet the stated goals. Some question sets might have more than one correct solution, while others might not have a correct solution.

After you answer a question in this section, you will NOT be able to return to it. As a result, these questions will not appear in the review screen.

The lead developer at your company reports that adding new application features takes longer than expected due to a large accumulated technical debt. You need to recommend changes to reduce the accumulated technical debt. Solution: You recommend increasing the test coverage.

Does this meet the goal?

- A. Yes
- B. No

Answer: B

Explanation:

Instead reduce the code complexity. Reference:
<https://dzone.com/articles/fight-through-the-pain-how-to-deal-with-technical>

NEW QUESTION 185

- (Topic 4)

You manage code by using GitHub.

You need to ensure that repository owners are notified if a new vulnerable dependency or malware is found in their repository.

What should you do?

- A. Configure branch protection rules for each repository.
- B. Configure Dependabot alerts.
- C. Configure CodeQL scanning actions.
- D. Subscribe all the repository owners to the GitHub Advisory Database.

Answer: B

NEW QUESTION 186

- (Topic 4)

You have an Azure subscription that contains the resources shown in the following table.

Name	Type
DepPipeline1	Azure DevOps deployment pipeline
ADFPipeline1	Azure Data Factory pipeline
Vault1	Azure Key Vault

DepPipeline1 and ADFPipeline1 use a single credential that is stored in Vault1. You need to configure ADFPipeline1 to retrieve the credential from Vault1. Which type of activity should you use?

- A. Web
- B. Copy
- C. Lookup
- D. Get Metadata

Answer: A

NEW QUESTION 191

SIMULATION - (Topic 4)

You have an Azure function hosted in an App Service plan named az400-9940427-func1.

You need to configure az400-9940427-func1 to upgrade the functions automatically whenever new code is committed to the master branch of

<https://github.com/Azure-Samples/functions-quickstart>.

To complete this task, sign in to the Microsoft Azure portal.

- A. Mastered
- B. Not Mastered

Answer: A

Explanation:

* 1. Open Microsoft Azure Portal

* 2. Log into your Azure account, select App Services in the Azure portal left navigation, and then select configure az400-9940427-func1.

* 3. On the app page, select Deployment Center in the left menu.

* 4. On the Build provider page, select Azure Pipelines (Preview), and then select Continue.

* 5. On the Configure page, in the Code section:

For GitHub, drop down and select the Organization, Repository, and Branch you want to deploy continuously.

* 6. Select Continue.

* 7. On the Test page, choose whether to enable load tests, and then select Continue.

* 8. Depending on your App Service plan pricing tier, you may see a Deploy to staging page. Choose whether to enable deployment slots, and then select Continue.

* 9. After you configure the build provider, review the settings on the Summary page, and then select Finish.

References:

<https://docs.microsoft.com/en-us/azure/app-service/deploy-continuous-deployment>

NEW QUESTION 193

- (Topic 4)

You have an Azure subscription that contains resources in several resource groups.

You need to design a monitoring strategy that will provide a consolidated view. The solution must support the following requirements:

- Support role-based access control (RBAC) by using Azure Active Directory (Azure AD) identities.
- Include visuals from Azure Monitor that are generated by using the Kusto query language.
- Support documentation written in markdown.
- Use the latest data available for each visual.

What should you use to create the consolidated view?

- A. Azure Data Explorer
- B. Azure dashboards
- C. Azure Monitor
- D. Microsoft Power BI

Answer: A

Explanation:

There are several tools available for running queries in Azure Data Explorer, including Kusto.

Kusto uses a role-based access control (RBAC) model, under which authenticated principals are mapped to roles, and get access according to the roles they're assigned.

Note: Azure Data Explorer is a highly scalable and secure analytics service that enables you to do rich exploration of structured and unstructured data for instant insights. Optimized for ad-hoc queries, Azure Data Explorer enables rich data exploration over raw, structured, and semi-structured data delivering fast time to insight. Query with a modern, intuitive query language that offers fast, ad-hoc, and advanced query capabilities over high-rate data volumes and varieties

Reference:

<https://docs.microsoft.com/en-us/azure/data-explorer/tools-integrations-overview>

NEW QUESTION 197

- (Topic 4)

You use GitHub for source control of .NET applications.

You need to deploy a documentation solution that meets the following requirements:

- ? Documents will be written in Markdown as developers make code changes
- ? Changes to the documents will trigger the recompilation of a static website.
- ? Users will access the documents from the static websites

? Documents will be stored in a GitHub repository

Which two tools can you use to compile the website? Each correct answer presents a complete solution.

- A. Jekyll
- B. Medium
- C. caret
- D. WordPress
- E. Doc FX

Answer: AD

Explanation:

A. Jekyll is a static site generator that can be used to generate a static website from Markdown files stored in a GitHub repository. Jekyll supports the use of Markdown for writing documentation, and it can automatically recompile the website whenever changes are made to the documentation.

* E. Doc FX is another tool that can be used to compile a static website from Markdown files stored in a GitHub repository. It is an open-source tool that can be used to generate API documentation, reference documentation, and other types of documentation from source code and other files. Doc FX supports the use of Markdown for writing documentation and it can automatically recompile the website whenever changes are made to the documentation.

NEW QUESTION 198

- (Topic 4)

You need to configure GitHub to use Azure Active Directory (Azure AD) for authentication. What should you do first?

- A. Create a conditional access policy in Azure AD.
- B. Modify the Security settings of the GitHub organization.
- C. Create an Azure Active Directory B2C (Azure AD B2C) tenant.
- D. Register GitHub in Azure AD.

Answer: D

Explanation:

When you connect to a Git repository from your Git client for the first time, the credential manager prompts for credentials. Provide your Microsoft account or Azure AD credentials.

Note: Git Credential Managers simplify authentication with your Azure Repos Git repositories. Credential managers let you use the same credentials that you use for the

Azure DevOps Services web portal. Credential managers support multi-factor authentication through Microsoft account or Azure Active Directory (Azure AD).

Besides supporting multi-factor authentication with Azure Repos, credential managers also support two-factor authentication with GitHub repositories.

Reference:

<https://docs.microsoft.com/en-us/azure/devops/repos/git/set-up-credential-managers>

NEW QUESTION 203

DRAG DROP - (Topic 4)

You provision an Azure Kubernetes Service (AKS) cluster that has RBAC enabled. You have a Helm chart for a client application.

You need to configure Helm and Tiller on the cluster and install the chart.

Which three commands should you recommend be run in sequence? To answer, move the appropriate commands from the list of commands to the answer area and arrange them in the correct order.

Commands	Answer Area
<div>helm install</div>	
<div>kubectl create</div>	
<div>helm completion</div>	<div>➔</div>
<div>helm init</div>	<div>⬅</div>
<div>helm serve</div>	<div>⬆</div>

- A. Mastered
- B. Not Mastered

Answer: A

Explanation:

Step 1: Kubectl create

You can add a service account to Tiller using the --service-account <NAME> flag while you're configuring Helm (step 2 below). As a prerequisite, you'll have to create a role binding which specifies a role and a service account name that have been set up in advance.

Example: Service account with cluster-admin role

\$ kubectl create -f rbac-config.yaml serviceaccount "tiller" created clusterrolebinding "tiller" created

\$ helm init --service-account tiller

Step 2: helm init

To deploy a basic Tiller into an AKS cluster, use the helm init command.

Step 3: helm install

To install charts with Helm, use the helm install command and specify the name of the chart to install.

References:

<https://docs.microsoft.com/en-us/azure/aks/kubernetes-helm> https://docs.helm.sh/using_helm/#tiller-namespaces-and-rbac

NEW QUESTION 204

- (Topic 4)

You have an Azure DevOps organization named Contoso and art Azure subscription The subscription contains an Azure virtual machine scale set named VMSS1 that is configured for autoscaling.

You use Azure DevOps to build a web app named Appl and deploy Appl to VMSS1. Appl is used heavily and has usage patterns that vary on a weekly basis.

You need to recommend a solution to detect an abnormal rise in the rate of failed requests to Appl. The solution must minimize administrative effort.

What should you include in the recommendation?

- A. an Azure Service Health alert
- B. the Failures feature in Azure Application Insights
- C. the Smart Detection feature m Azure Application Insights
- D. an Azure Monitor alert that uses an Azure Log Analytics query

Answer: C

Explanation:

After setting up Application Insights for your project, and if your app generates a certain minimum amount of data, Smart Detection of failure anomalies takes 24 hours to learn the normal behavior of your app, before it is switched on and can send alerts.

Reference:

<https://docs.microsoft.com/en-us/azure/azure-monitor/app/proactive-failure-diagnostics>

NEW QUESTION 209

- (Topic 4)

Your company implements an Agile development methodology. You plan to implement retrospectives at the end of each sprint.

Which three questions should you include? Each correct answer presents part of the solution.

NOTE: Each correct selection is worth one point.

- A. Who performed well?
- B. Who should have performed better?
- C. What could have gone better?
- D. What went well?
- E. What should we try next?

Answer: CDE

Explanation:

<https://www.scrum.org/resources/what-is-a-sprint-retrospective>

NEW QUESTION 213

DRAG DROP - (Topic 4)

You are implementing an Azure DevOps strategy for mobile devices using App Center. You plan to use distribution groups to control access to releases.

You need to create the distribution groups shown in the following table.

Name	Use
Group1	Application testers who are invited by email
Group2	Early release users who use unauthenticated public links
Group3	Application testers for all the apps of your company

Which type of distribution group should you use for each group? To answer, drag the appropriate group types to the correct locations. Each group type may be used once, more

than once, or not at all. You may need to drag the split bar between panes or scroll to view content.

NOTE: Each correct selection is worth one point.

Private

Public

Shared

Group1:

Group2:

Group3:

- A. Mastered
- B. Not Mastered

Answer: A

Explanation:

Box1: Private

In App Center, distribution groups are private by default. Only testers invited via email can access the releases available to this group.

Box 2: Public

Distribution groups must be public to enable unauthenticated installs from public links.

Box 3: Shared

Shared distribution groups are private or public distribution groups that are shared across multiple apps in a single organization.

NEW QUESTION 218

- (Topic 4)

You use a Git repository in Azure Repos to manage the source code of a web application. Developers commit changes directly to the master branch.

You need to implement a change management procedure that meets the following requirements:

The master branch must be protected, and new changes must be built in the feature branches first.

Changes must be reviewed and approved by at least one release manager before each merge.

Changes must be brought into the master branch by using pull requests. What should you configure in Azure Repos? D18912E1457D5D1DDCBD40AB3BF70D5D

A. branch policies of the master branch

B. Services in Project Settings

C. Deployment pools in Project Settings

D. branch security of the master branch

Answer: A

Explanation:

Branch policies help teams protect their important branches of development.

Policies enforce your team's code quality and change management standards. Reference:

<https://docs.microsoft.com/en-us/azure/devops/repos/git/branch-policies>

NEW QUESTION 222

- (Topic 4)

During a code review, you discover many quality issues. Many modules contain unused variables and empty catch Modes. You need to recommend a solution to improve the quality o' the code. What should you recommend?

A. In a Gradle build task, select Run Checkstyle.

B. In an Xcode build task, select Use xcpretty from Advanced

C. In a Grunt build task, select Enabled from Control Options.

D. In a Maven build task, select Run PMD.

Answer: D

Explanation:

PMD is a source code analyzer. It finds common programming flaws like unused variables, empty catch blocks, unnecessary object creation, and so forth.

There is an Apache Maven PMD Plugin which allows you to automatically run the PMD code analysis tool on your project's source code and generate a site report with its results. References: <https://pmd.github.io/>

NEW QUESTION 227

- (Topic 4)

You have an Azure DevOps organization named Contoso.

You need to receive Microsoft Teams notifications when work items are updated. What should you do?

A. From Azure DevOps, configure a service hook subscription

B. From Microsoft Teams, configure a connector

C. From the Microsoft Teams admin center, configure external access

D. From Microsoft Teams, add a channel

E. From Azure DevOps, install an extension

Answer: A

Explanation:

Service hooks let you run tasks on other services when events happen in your Azure DevOps projects. For example, create a card in Trello when a work item is created or send a push notification to your team's mobile devices when a build fails. You can also use service hooks in custom apps and services as a more efficient way to drive activities when events happen in your projects.

Note: Service hook publishers define a set of events. Subscriptions listen for the events and define actions to take based on the event. Subscriptions also target consumers, which are external services that can run their own actions, when an event occurs.

Reference:

<https://docs.microsoft.com/en-us/azure/devops/service-hooks/overview>

NEW QUESTION 228

- (Topic 4)

You are designing a build pipeline in Azure Pipelines.

The pipeline requires a self-hosted agent. The build pipeline will run once daily and will take 30 minutes to complete.

You need to recommend a compute type for the agent. The solution must minimize costs. What should you recommend?

A. Azure virtual machines

B. an Azure virtual machine scale set

C. an Azure Kubernetes Service (AKS) cluster

D. Azure Container Instances

Answer: D

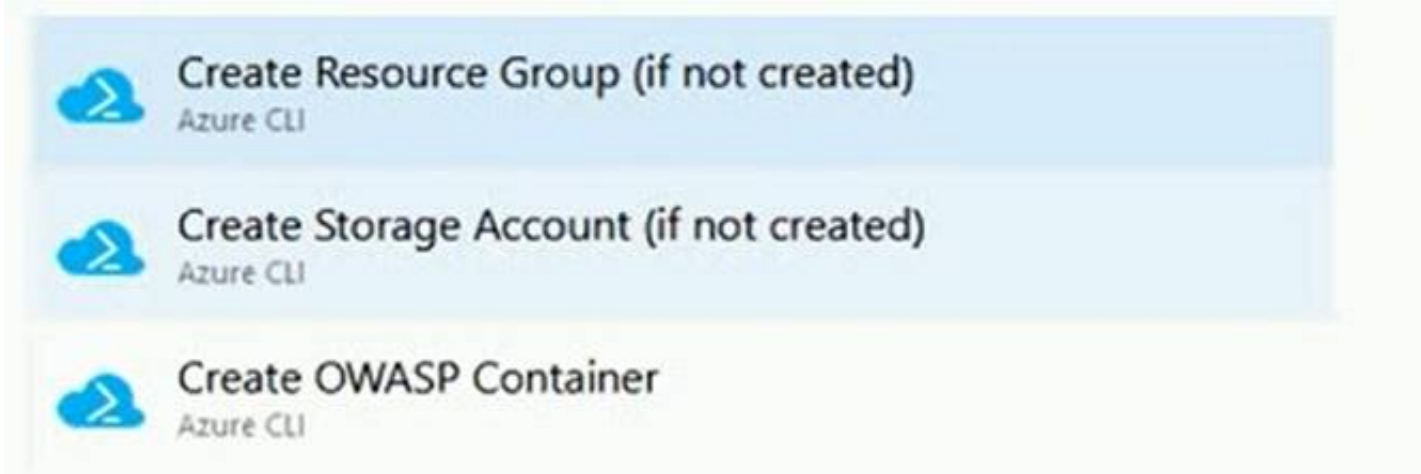
Explanation:

<https://docs.microsoft.com/en-us/azure/devops/pipelines/agents/agents?view=azure-devops&tabs=browser#faq>

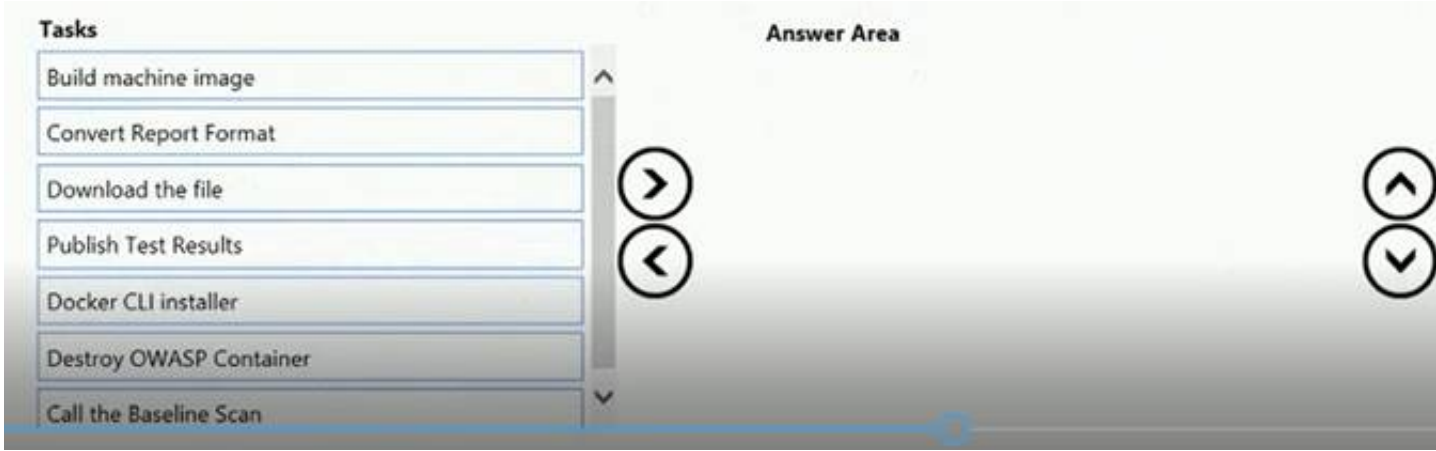
NEW QUESTION 231

DRAG DROP - (Topic 4)

You have an Azure DevOps release pipeline as shown in the following exhibit.



You need to complete the pipeline to configure OWASP ZAP for security testing. Which five Azure CLI tasks should you add in sequence? To answer, move the tasks from the list of tasks to the answer area and arrange them in the correct order.

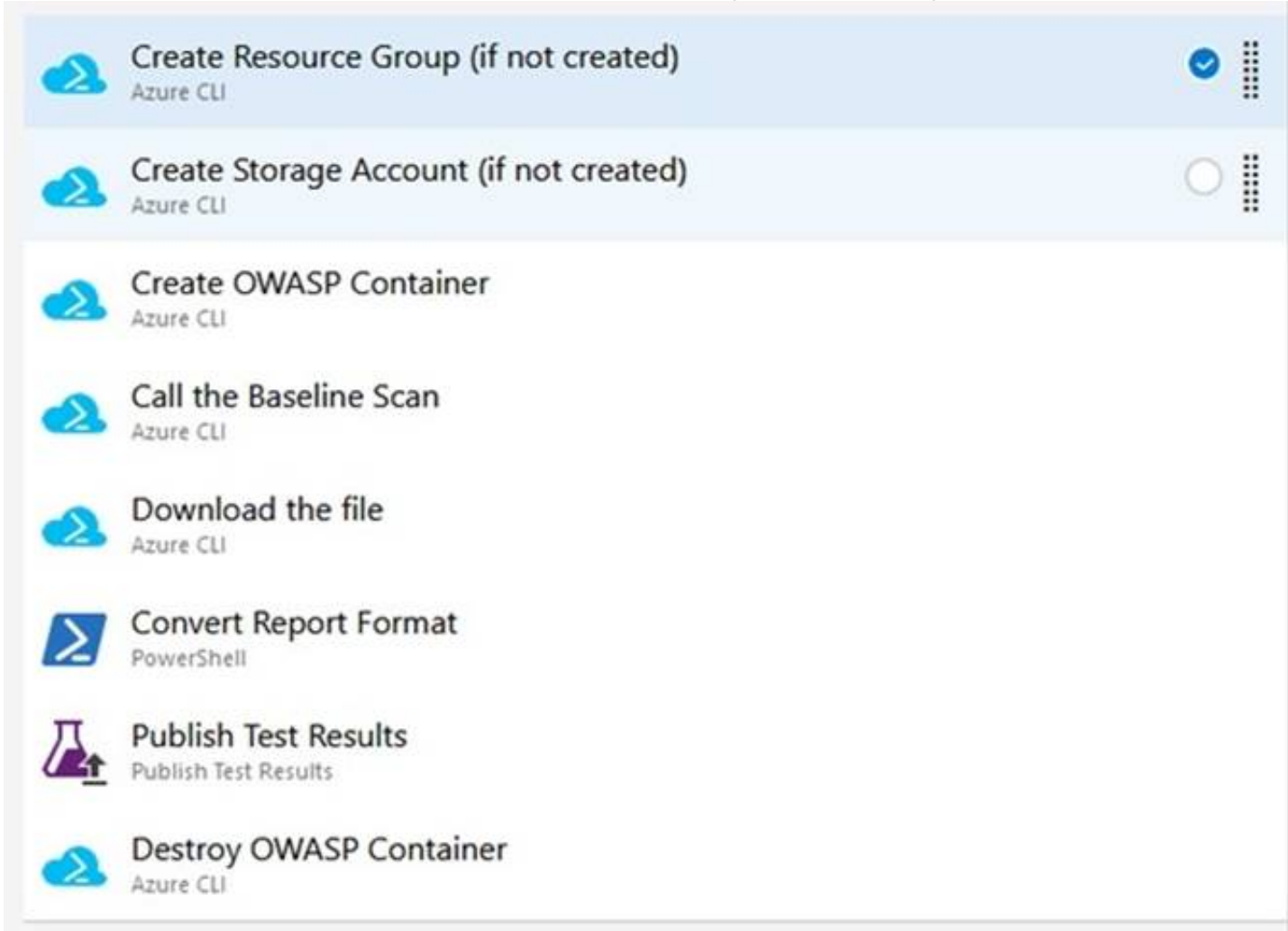


- A. Mastered
- B. Not Mastered

Answer: A

Explanation:

Defining the Release Pipeline
Once the application portion of the Release pipeline has been configured, the security scan portion can be defined. In our example, this consists of 8 tasks, primarily using the Azure CLI task to create and use the ACI instance (and supporting structures). Otherwise specified, all the Azure CLI tasks are Inline tasks, using the default configuration options.



NEW QUESTION 234

- (Topic 4)

You need to recommend a Docker container build strategy that meets the following requirements

- Minimizes image sizes
- Minimizes the security surface area of the final image What should you include in the recommendation?

- A. multi-stage builds
- B. single-stage builds
- C. PowerShell Desired State Configuration (DSC)
- D. Docker Swarm

Answer: A

Explanation:

Multi-stage builds are a new feature requiring Docker 17.05 or higher on the daemon and client. Multistage builds are useful to anyone who has struggled to optimize Dockerfiles while keeping them easy to read and maintain.

References: <https://docs.docker.com/develop/develop-images/multistage-build/>

NEW QUESTION 235

- (Topic 4)

Your company develops a client banking application that processes a large volume of data.

Code quality is an ongoing issue for the company. Recently, the code quality has deteriorated because of an increase in time pressure on the development team.

You need to implement static code analysis.

During which phase should you use static code analysis?

- A. build
- B. production release
- C. staging
- D. integration testing

Answer: D

Explanation:

The Secure Development Lifecycle (SDL) Guidelines recommend that teams perform static analysis during the implementation phase of their development cycle.

Note: The company should focus in particular on the implementation of DevOps tests to assess the quality of the software from the planning stage to the implementation phase of the project.

References: <https://secdevtools.azurewebsites.net/>

NEW QUESTION 238

- (Topic 4)

Your company has a release pipeline in an Azure DevOps project.

You plan to deploy to an Azure Kubernetes Services (AKS) cluster by using the Helm package and deploy task.

You need to install a service in the AKS namespace for the planned deployment. Which service should you install?

- A. Azure Container Registry
- B. Chart
- C. Kubectl
- D. Tiller

Answer: D

Explanation:

Before you can deploy Helm in an RBAC-enabled AKS cluster, you need a service account and role binding for the Tiller service.

Reference:

<https://docs.microsoft.com/en-us/azure/aks/kubernetes-helm>

NEW QUESTION 239

- (Topic 4)

You are creating a build pipeline in Azure Pipelines.

You define several tests that might fail due to third-party applications.

You need to ensure that the build pipeline completes successfully if the third-party applications are unavailable.

What should you do?

- A. Configure the build pipeline to use parallel jobs
- B. Configure flaky tests
- C. Increase the test pass percentage
- D. Add the Requirements quality widget to your dashboard

Answer: B

NEW QUESTION 241

- (Topic 4)

Note: This question is part of a series of questions that present the same scenario. Each question in the series contains a unique solution that might meet the stated goals. Some question sets might have more than one correct solution, while others might not have a correct solution.

After you answer a question in this section, you will NOT be able to return to it. As a result, these questions will not appear in the review screen.

You plan to create a release pipeline that will deploy Azure resources by using Azure Resource Manager templates. The release pipeline will create the following resources:

Two resource groups

Four Azure virtual machines in one resource group Two Azure SQL databases in other resource group

You need to recommend a solution to deploy the resources.

Solution: Create a single standalone template that will deploy all the resources. Does this meet the goal?

- A. Yes
- B. No

Answer: A

Explanation:

Use two templates, one for each resource group, and link the templates.

References:

<https://docs.microsoft.com/en-us/azure/azure-resource-manager/resource-group-linked-templates>

NEW QUESTION 246

- (Topic 4)

You are monitoring the health and performance of an Azure web app by using Azure Application Insights.

You need to ensure that an alert is sent when the web app has a sudden rise in performance issues and failures.

What should you use?

- A. custom events
- B. Application Insights Profiler
- C. usage analysis
- D. Smart Detection
- E. Continuous export

Answer: D

Explanation:

Smart Detection automatically warns you of potential performance problems and failure anomalies in your web application. It performs proactive analysis of the telemetry that your app sends to Application

Insights. If there is a sudden rise in failure rates, or abnormal patterns in client or server performance, you get an alert.

Reference:

<https://docs.microsoft.com/en-us/azure/azure-monitor/app/proactive-diagnostics>

NEW QUESTION 251

DRAG DROP - (Topic 4)

You have a GitHub organization named org1 and an Azure tenant named Tenant1.

You need to enable single sign-on (SSO) in Azure Active Directory (Azure AD) for the users in org1.

Which URIs should you use for the SAML configuration in Azure AD? To answer, drag the appropriate URIs to the correct settings. Each URI may be used once, more than once, or not at all. You may need to drag the split bar between panes or scroll to view content.

NOTE: Each correct selection is worth one point.

URIs	Answer Area
<input type="text" value="https://github.com/orgs/org1"/>	
<input type="text" value="https://github.com/orgs/org1/sso"/>	Identifier (Entity ID): <input type="text"/>
<input type="text" value="https://login.microsoftonline.com/tenant1"/>	Reply URL (Assertion Consumer Service URL): <input type="text"/>
<input type="text" value="https://github.com/orgs/org1/saml/consume"/>	
<input type="text" value="https://login.microsoftonline.com/tenant1.com"/>	Sign on URL: <input type="text"/>

- A. Mastered
- B. Not Mastered

Answer: A

Explanation:

Graphical user interface, text, application Description automatically generated

NEW QUESTION 255

- (Topic 4)

You have the services shown in the following table.

Name	Interface type
Service1	HTTP
Service2	HTTPS

You manage a project by using Azure Boards.

You need to notify the services Of build Status changes. Which services can be notified by using a web hook?

- A. Service1 only
- B. Service2 only
- C. Service1 and Service2 only

Answer: C

NEW QUESTION 258

- (Topic 4)
You are developing a multi-tier application. The application will use Azure App Service web apps as the front end and an Azure SQL database as the back end. The application will use Azure functions to write some data to Azure Storage.
You need to send the Azure DevOps team an email message when the front end fails to return a status code of 200.
Which feature should you use?

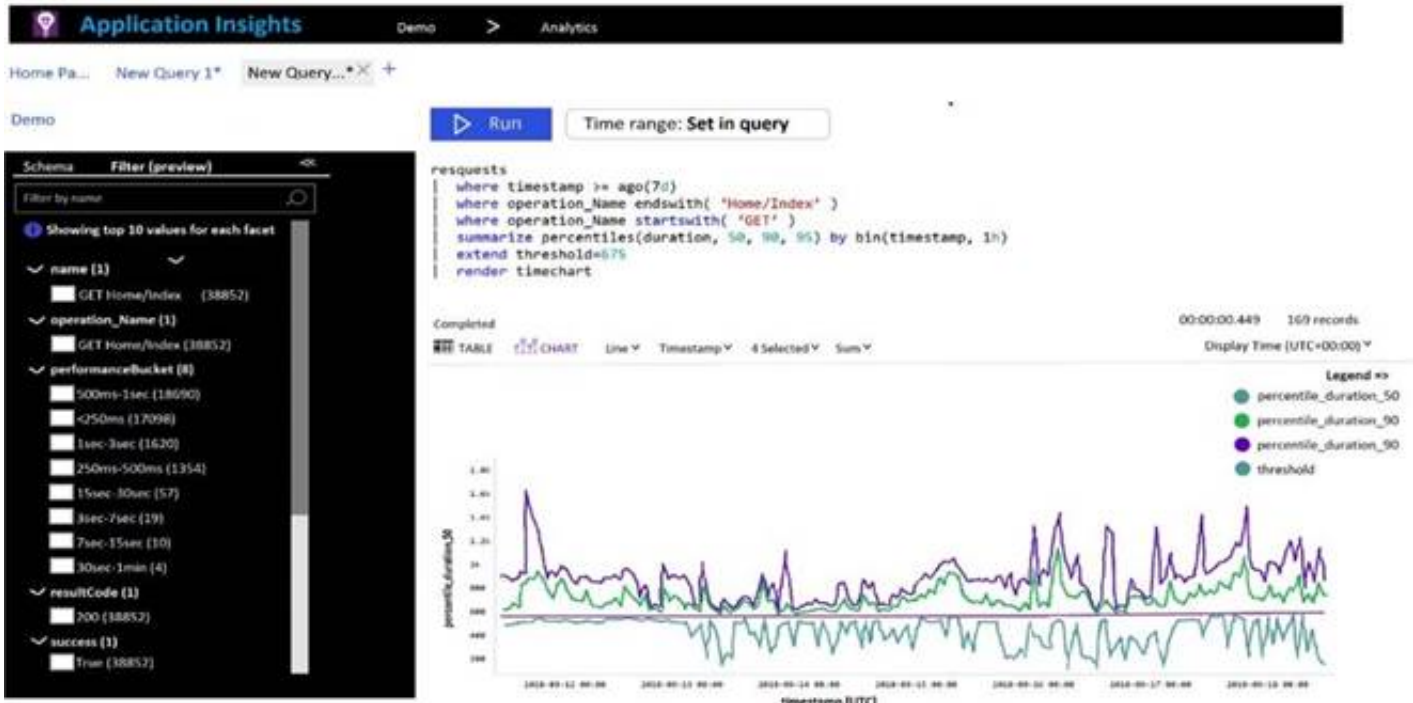
- A. Service Map in Azure Log Analytics
- B. Profiler in Azure Application Insights
- C. availability tests in Azure Application Insights
- D. Application Map in Azure Application Insights

Answer: D

Explanation:
<https://docs.microsoft.com/en-us/azure/azure-monitor/app/monitor-web-app-availability>

NEW QUESTION 263

HOTSPOT - (Topic 4)
You plan to create alerts that will be triggered based on the page load performance of a home page.
You have the Application Insights log query shown in the following exhibit.



Use the drop-down menus to select the answer choice that completes each statement based on the information presented in the graphic.
NOTE: Each correct selection is worth one point.

To create an alert based on the page load experience of most users, the alerting level must be based on [answer choice].

percentile_duration_50

percentile_duration_90

percentile_duration_95

threshold

To only create an alert when authentication error occurs on the server, the query must be filtered on [answer choice].

item Type

resultCode

source

success

- A. Mastered
- B. Not Mastered

Answer: A

Explanation:
Box 1: percentile_duration_95
Box 2: resultCode

NEW QUESTION 266

- (Topic 4)
You have a project in Azure DevOps named Project1.
You need to ensure that all new pipelines in Project1 execute three specific tasks during pipeline execution.

What should you create?

- A. a task group
- B. a JSON template
- C. a YAML template
- D. a PowerShell task

Answer: A

Explanation:

A task group in Azure DevOps is a collection of tasks that can be reused across multiple pipelines. You can create a task group that contains the three specific tasks that you need to execute during pipeline execution, and then reference that task group in all new pipelines in Project1. This way, you can ensure that the three specific tasks are executed in all new pipelines without having to manually add them to each pipeline.

NEW QUESTION 270

- (Topic 4)

You have an Azure Resource Manager template that deploys a multi-tier application.

You need to prevent the user who performs the deployment from viewing the account credentials and connection strings used by the application.

What should you use?

- A. an Azure Resource Manager parameter file
- B. an Azure Storage table
- C. an Appsettings.json files
- D. Azure Key Vault
- E. a Web.config file

Answer: D

Explanation:

When you need to pass a secure value (like a password) as a parameter during deployment, you can retrieve the value from an Azure Key Vault. You retrieve the value by referencing the key vault and secret in your parameter file. The value is never exposed because you only reference its key vault ID. The key vault can exist in a different subscription than the resource group you are deploying to.

References: <https://docs.microsoft.com/en-us/azure/azure-resource-manager/resource-manager-keyvault-parameter>

NEW QUESTION 271

FILL IN THE BLANK - (Topic 4)

You are creating a YAML-based Azure pipeline to deploy an Azure Data factory instance that has the following requirements;

- If a Data Factory instance exists already, the instance must be overwritten.
- No other resources in a resource group named Fabrikam must be affected.

How should you complete the code? To answer, select the appropriate options in the answer area.

NOTE: Each correct selection is worth one point.

Answer Area

```
steps:
- task: AzureResourceManagerTemplateDeployment@3
  inputs:
    deploymentScope: 'Resource Group'
    azureResourceManagerConnection: 'Fabrikam Corporate(a41fb3ed-a2aa-42f0-a7ac-8fcc6ef0c5db)'
    subscriptionId: 'a41de0ed-a2aa-42f0-a7ac-8fcc6ef0c5db'
    action: 
  resourceGroupName: 'Fabrikam'
  location: 'West US'
  templateLocation: 'Linked artifact'
  deploymentMode: 
```

- A. Mastered
- B. Not Mastered

Answer: A

Explanation:

Answer Area

```
steps:
- task: AzureResourceManagerTemplateDeployment@3
  inputs:
    deploymentScope: 'Resource Group'
    azureResourceManagerConnection: 'Fabrikam Corporate(a41fb3ed-a2aa-42f0-a7ac-8fcc6ef0c5db)'
    subscriptionId: 'a41de0ed-a2aa-42f0-a7ac-8fcc6ef0c5db'
    action: 'Create Or Update Resource Group'
    resourceGroupName: 'Fabrikam'
    location: 'West US'
    templateLocation: 'Linked artifact'
    deploymentMode: 'Incremental'
```

NEW QUESTION 276

DRAG DROP - (Topic 4)

You have several Azure virtual machines that run Windows Server 2019.

You need to identify the distinct event IDs of each virtual machine as shown in the following table.

Name	Event ID
VM1	[704,701,1501,1500, 1085]
VM2	[326,105,302,301,300,102]
...	...

How should you complete the Azure Monitor query? To answer, drag the appropriate values to the correct locations. Each value may be used once, more than once, or not at all. You may need to drag the split bar between panes or scroll to view content.

count()
makelist(EventID)
makeset(EventID)
mv-expand
project
render
summarize

Answer Area
Event
| where TimeGenerated > ago(12h)
| order by TimeGenerated desc
| Value Value by Computer

- A. Mastered
- B. Not Mastered

Answer: A

Explanation:

You can use makelist to pivot data by the order of values in a particular column. For example, you may want to explore the most common order events take place on your machines. You can essentially pivot the data by the order of EventIDs on each machine.

Example: Event

| where TimeGenerated > ago(12h)

| order by TimeGenerated desc

| summarize makelist(EventID) by Computer

NEW QUESTION 281

- (Topic 4)

You have a private project in Azure DevOps.

You need to ensure that a project manager can create custom work item queries to report on the project's progress. The solution must use the principle of least privilege.

To which security group should you add the project manager?

- A. Project Collection Administrators
- B. Reader
- C. Project Administrators
- D. Contributor

Answer: D

Explanation:

Contributors have permissions to contribute fully to the project code base and work item tracking. The main permissions they don't have or those that manage or administer resources.

Reference:

<https://docs.microsoft.com/en-us/azure/devops/organizations/security/permissions>

<https://docs.microsoft.com/en-us/azure/devops/organizations/security/permissions-access-work-tracking?view=azure-devops#queries-and-semantic-search>

NEW QUESTION 282

- (Topic 4)

You have an existing project in Azure DevOps.

You plan to integrate GitHub as the repository for the project

You need to ensure that Azure Pipelines runs under the Azure Pipelines identity Which authentication mechanism should you use?

- A. GitHubApp
- B. OAuth
- C. personal access token (PAT)
- D. Azure Active Directory (Azure AD)

Answer: A

Explanation:

GitHub App uses the Azure Pipelines identity.

Reference:

<https://docs.microsoft.com/en-us/azure/devops/pipelines/repos/github>

NEW QUESTION 286

- (Topic 4)

You have an application that consists of several Azure App Service web apps and Azure functions.

You need to access the security of the web apps and the functions.

Which Azure features can you use to provide a recommendation for the security of the application?

- A. Security & Compliance in Azure Log Analytics
- B. Resource health in Azure Service Health
- C. Smart Detection in Azure Application Insights
- D. Compute & apps in Azure Security Center

Answer: D

Explanation:

Monitor compute and app services: Compute & apps include the App Services tab, which App services: list of your App service environments and current security state of each.

Recommendations

This section has a set of recommendations for each VM and computer, web and worker roles, Azure App Service Web Apps, and Azure App Service Environment that Security

Center monitors. The first column lists the recommendation. The second column shows the total number of resources that are affected by that recommendation.

The third column shows the severity of the issue.

NEW QUESTION 287

- (Topic 4)

You have a GitHub repository.

You create a new repository in Azure DevOps.

You need to recommend a procedure to clone the repository from GitHub to Azure DevOps.

What should you recommend?

- A. Create a webhook.
- B. Create a service connection for GitHub.
- C. From Import a Git repository, click Import
- D. Create a pull request.
- E. Create a personal access token in Azure DevOps.

Answer: C

NEW QUESTION 291

- (Topic 4)

Note: This question is part of a series of questions that present the same scenario. Each question in the series contains a unique solution that might meet the stated goals. Some question sets might have more than one correct solution, while others might not have a correct solution.

After you answer a question in this section, you will NOT be able to return to it. As a result, these questions will not appear in the review screen.

You have an Azure DevOps organization named Contoso and an Azure subscription. The subscription contains an Azure virtual machine scale set named VMSS1 that is configured for auto scaling.

You have a project in Azure DevOps named Project1. Project1 is used to build a web app named App1 and deploy App1 to VMSS1.

You need to ensure that an email alert is generated whenever VMSS1 scales in or out. Solution: From Azure DevOps, configure the Service hooks settings for Project1.

Does this meet the goal?

- A. Yes
- B. No

Answer: B

NEW QUESTION 294

- (Topic 4)

Your company has an on-premises Bitbucket Server that is used for Git-based source control. The server is protected by a firewall that blocks inbound Internet traffic.

You plan to use Azure DevOps to manage the build and release processes Which two components are required to integrate Azure DevOps and Bitbucket? Each correct answer presents part of the solution.

NOTE: Each correct selection is worth one point.

- A. an External Git service connection
- B. a Microsoft hosted agent
- C. service hooks
- D. a self-hosted agent
- E. a deployment M group

Answer: AD

Explanation:

When a pipeline uses a remote, 3rd-party repository host such as Bitbucket Cloud, the repository is configured with webhooks that notify Azure Pipelines Server or TFS when code has changed and a build should be triggered. Since on-premises installations are normally protected behind a firewall, 3rd-party webhooks are unable to reach the on-premises server. As a workaround, you can use the External Git repository type which uses polling instead of webhooks to trigger a build when code has changed.

References: <https://docs.microsoft.com/en-us/azure/devops/pipelines/repos/pipeline-options-for>

NEW QUESTION 297

- (Topic 4)

You have an Azure subscription that contains 50 virtual machines

You plan to manage the configuration of the virtual machines by using Azure Automation State Configuration.

You need to create the Desired State Configuration (DSO configuration files. How should structure the code blocks?

- A. Node>Configuration>Resource
- B. Configuration>Node> Resource
- C. Configuration>Resource>Node
- D. Resource>Configuration>Node

Answer: B

Explanation:

In Azure Automation State Configuration, the Desired State Configuration (DSC) configuration files are used to define the desired state of resources on a system. The structure of the code blocks in a DSC configuration file should be organized in a logical and meaningful way.

One way to structure the code blocks is as follows:

? Configuration: This block defines the overall configuration, including any parameters that are used in the configuration.

? Node: This block defines the target node(s) for the configuration, typically specified by the hostname or IP address of the target system.

? Resource: This block defines the resources that are managed by the configuration, including the resource type, module, and properties.

"A configuration script consists of the following parts:

The Configuration block. This is the outermost script block. You define it by using the Configuration keyword and providing a name. In this case, the name of the configuration is My Dsc Configuration.

One or more Node blocks. These define the nodes (computers or VMs) that you are configuring. In the above configuration, there is one Node block that targets a computer named TEST-PC1. The Node block can accept multiple computer names.

One or more resource blocks. This is where the configuration sets the properties for the resources that it is configuring. In this case, there are two resource blocks, each of which call the Windows Feature resource."

[https://docs.microsoft.com/en-us/powershell/dsc/configurations/configurations?view=dsc- 1.1#configuration-syntax](https://docs.microsoft.com/en-us/powershell/dsc/configurations/configurations?view=dsc-1.1#configuration-syntax)

NEW QUESTION 299

.....

Relate Links

100% Pass Your AZ-400 Exam with ExamBible Prep Materials

<https://www.exambible.com/AZ-400-exam/>

Contact us

We are proud of our high-quality customer service, which serves you around the clock 24/7.

Viste - <https://www.exambible.com/>