

## Exam Questions 300-430

Implementing Cisco Enterprise Wireless Networks (ENWLSI)

<https://www.2passeasy.com/dumps/300-430/>



#### NEW QUESTION 1

Which QoS level is recommended for guest services?

- A. gold
- B. bronze
- C. platinum
- D. silver

**Answer:** B

#### NEW QUESTION 2

Which feature on the Cisco Wireless LAN Controller must be present to support dynamic VLAN mapping?

- A. FlexConnect ACL
- B. VLAN name override
- C. CCKM/OKC
- D. AAA override

**Answer:** D

#### NEW QUESTION 3

An engineer wants to configure WebEx to adjust the precedence and override the QoS profile on the WLAN. Which configuration is needed to complete this task?

- A. Change the WLAN reserved bandwidth for WebEx
- B. Create an AVC profile for WebEx
- C. Create an ACL for WebEx
- D. Change the AVC application WebEx-app-sharing to mark

**Answer:** B

#### NEW QUESTION 4

A new MSE with wIPS service has been installed and no alarm information appears to be reaching the MSE from controllers. Which protocol must be allowed to reach the MSE from the controllers?

- A. SOAP/XML
- B. NMSP
- C. CAPWAP
- D. SNMP

**Answer:** A

#### NEW QUESTION 5

Which devices can be tracked with the Cisco Context Aware Services?

- A. wired and wireless devices
- B. wireless devices
- C. wired devices
- D. Cisco certified wireless devices

**Answer:** A

#### Explanation:

Reference: <https://www.cisco.com/c/en/us/support/docs/wireless/context-aware-software/110836-cas-faq.html>

#### NEW QUESTION 6

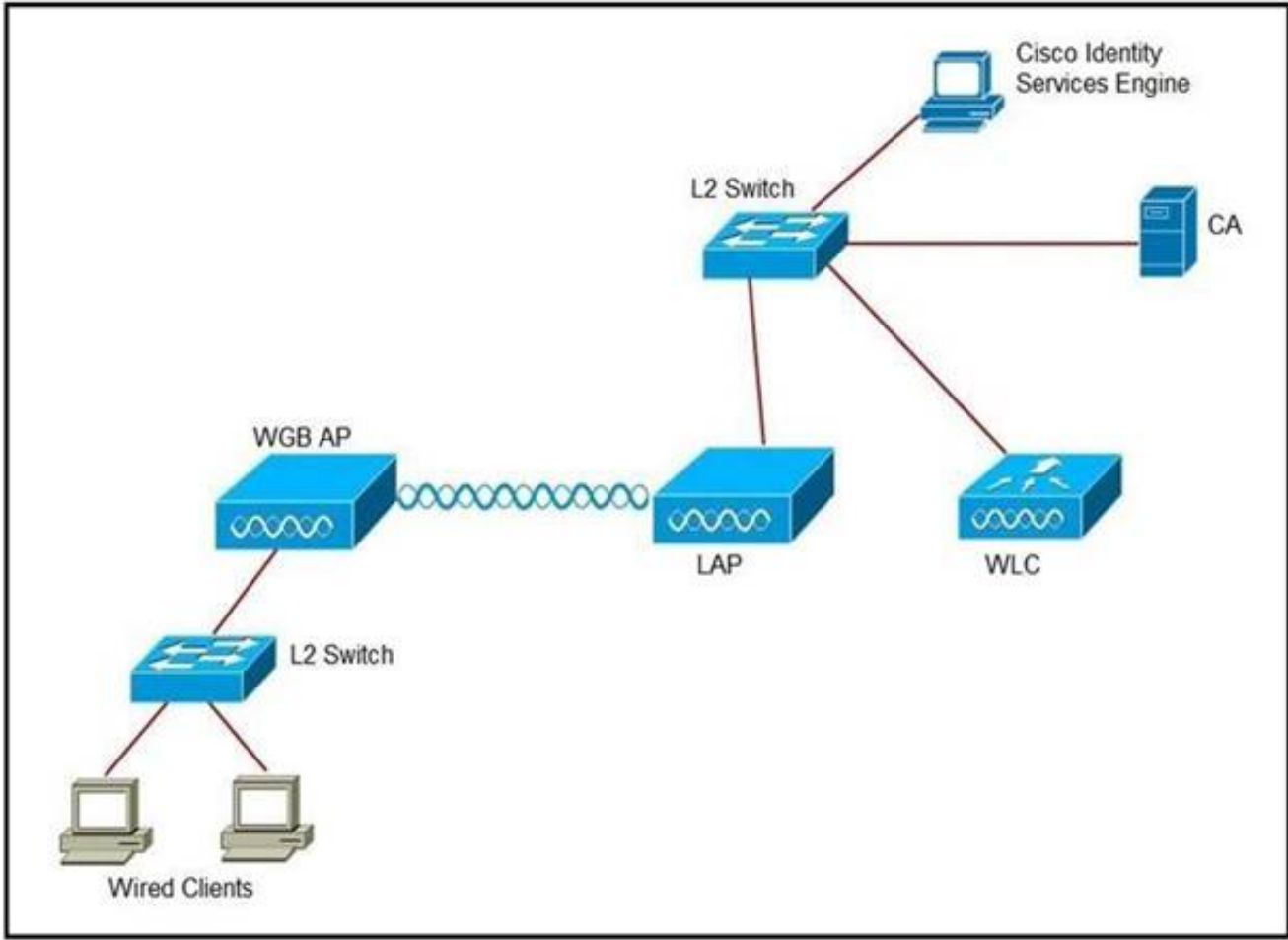
Which two events are outcomes of a successful RF jamming attack? (Choose two.)

- A. disruption of WLAN services
- B. unauthentication association
- C. deauthentication broadcast
- D. deauthentication multicast
- E. physical damage to AP hardware

**Answer:** AE

#### NEW QUESTION 7

Refer to the exhibit. An engineer must connect a fork lift via a WGB to a wireless network and must authenticate the WGB certificate against the RADIUS server. Which three steps are required for this configuration? (Choose three.)



- Configure the certificate, WLAN, and radio interface on WGB.
- Configure the certificate on the WLC.
- Configure WLAN to authenticate using ISE.
- Configure the access point with the root certificate from ISE.
- Configure WGB as a network device in ISE.
- Configure a policy on ISE to allow devices to connect that validate the certificate.

**Answer:** ACF

## NEW QUESTION 8

When using a Cisco Catalyst 9800 Series Wireless Controller, which statement about AutoQoS is true?

- A. It has a set of predefined profiles that you cannot modify further
- B. It matches traffic and assigns each matched packet to QoS groups
- C. It automates deployment of wired QoS and makes wireless QoS implementation easier
- D. It allows the output policy map to put specific QoS queues into specific subgroups

**Answer: B**

## NEW QUESTION 9

What is the maximum time range that can be viewed on the Cisco DNA Center issues and alarms page?

- A. 3 hours  
B. 24 hours  
C. 3 days  
D. 7 days

**Answer: B**

### NEW QUESTION 10

An engineer is implementing a FlexConnect group for access points at a remote location using local switching but central DHCP. Which client feature becomes available only if this configuration is changed?

- A. multicast
- B. static IP
- C. fast roaming
- D. mDNS

**Answer: B**

**NEW QUESTION 10**

What is the default NMSP echo interval between Cisco MSE and a Wireless LAN Controller?

- A. 10 seconds  
B. 15 seconds  
C. 30 seconds  
D. 60 seconds

**Answer: B**

**Explanation:**

Reference: [https://www.cisco.com/en/US/docs/wireless/mse/3350/6.0/CAS/configuration/guide/msecg\\_ch4\\_CAS.html](https://www.cisco.com/en/US/docs/wireless/mse/3350/6.0/CAS/configuration/guide/msecg_ch4_CAS.html)

**NEW QUESTION 12**

An engineer is following the proper upgrade path to upgrade a Cisco AireOS WLC from version 7.3 to 8.9. Which two ACLs for Cisco CWA must be configured when upgrading from the specified codes? (Choose two.)

- A. Permit 0.0.0.0 0.0.0.0 UDP any any
- B. Permit 0.0.0.0 0.0.0.0 any DNS any
- C. Permit 0.0.0.0 0.0.0.0 UDP DNS any
- D. Permit 0.0.0.0 0.0.0.0 UDP any DNS
- E. Permit any any any

**Answer:** AD

**NEW QUESTION 17**

Branch wireless users report that they can no longer access services from head office but can access services locally at the site. New wireless users can associate to the wireless while the WAN is down. Which three elements (Cisco FlexConnect state, operation mode, and authentication method) are seen in this scenario? (Choose three.)

- A. authentication-local/switch-local
- B. WPA2 personal
- C. authentication-central/switch-central
- D. lightweight mode
- E. standalone mode
- F. WEB authentication

**Answer:** ABE

**NEW QUESTION 19**

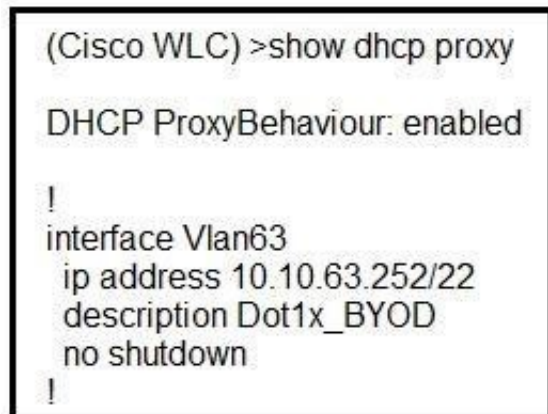
Which component must be integrated with Cisco DNA Center to display the location of a client that is experiencing connectivity issues?

- A. Cisco Hyperlocation Module
- B. Wireless Intrusion Prevention System
- C. Cisco Connected Mobile Experiences
- D. Cisco Mobility Services Engine

**Answer:** A

**NEW QUESTION 24**

Refer to the exhibit. A network administrator deploys the DHCP profiler service in two ISE servers: 10.3.10.101 and 10.3.10.102. All BYOD devices connecting to WLAN on VLAN63 have been incorrectly profiled and are assigned as unknown profiled endpoints. Which action efficiently rectifies the issue according to Cisco recommendations?



```
(Cisco WLC) >show dhcp proxy
DHCP ProxyBehaviour: enabled
!
interface Vlan63
 ip address 10.10.63.252/22
 description Dot1x_BYOD
 no shutdown
!
```

- A. Nothing needed to be added on the Cisco WLC or VLAN interface
- B. The ISE configuration must be fixed.
- C. Disable DHCP proxy on the Cisco WLC.
- D. Disable DHCP proxy on the Cisco WLC and run the ip helper-address command under the VLAN interface to point to DHCP and the two ISE servers.
- E. Keep DHCP proxy enabled on the Cisco WLC and define helper-address under the VLAN interface to point to the two ISE servers.

**Answer:** C

**NEW QUESTION 26**

Which statement about the VideoStream/Multicast Direct feature is true?

- A. IP multicast traffic is reliable over WLAN by default as defined by the IEEE 802.11 wireless multicast delivery mechanism.
- B. Each VideoStream client acknowledges receiving a video IP multicast stream.
- C. It converts the unicast frame to a multicast frame over the air.
- D. It makes the delivery of the IP multicast stream less reliable over the air, but reliable over Ethernet.

**Answer:** B

**Explanation:**

Reference: [https://www.cisco.com/c/en/us/td/docs/wireless/controller/8-1/configuration-guide/b\\_cg81/multicast\\_broadcast\\_setup.html](https://www.cisco.com/c/en/us/td/docs/wireless/controller/8-1/configuration-guide/b_cg81/multicast_broadcast_setup.html)

NEW QUESTION 31

.....

## THANKS FOR TRYING THE DEMO OF OUR PRODUCT

Visit Our Site to Purchase the Full Set of Actual 300-430 Exam Questions With Answers.

We Also Provide Practice Exam Software That Simulates Real Exam Environment And Has Many Self-Assessment Features. Order the 300-430 Product From:

<https://www.2passeasy.com/dumps/300-430/>

## Money Back Guarantee

### 300-430 Practice Exam Features:

- \* 300-430 Questions and Answers Updated Frequently
- \* 300-430 Practice Questions Verified by Expert Senior Certified Staff
- \* 300-430 Most Realistic Questions that Guarantee you a Pass on Your FirstTry
- \* 300-430 Practice Test Questions in Multiple Choice Formats and Updatesfor 1 Year