

Exam Questions 200-901

Developing Applications and Automating Workflows using Cisco Core Platforms (DEVASC)

<https://www.2passeasy.com/dumps/200-901/>



NEW QUESTION 1

- (Exam Topic 3)

Developer is working on a new feature and made changes on a branch named 'branch-413667549a-new'. When merging the branch to production, conflicts occurred. Which Git command must the developer use to recreate the pre-merge state?

- A. git merge -no-edit
- B. git merge -commit
- C. git merge -revert
- D. git merge -abort

Answer: D

Explanation:

<https://www.git-tower.com/learn/git/ebook/en/command-line/advanced-topics/merge-conflicts>

NEW QUESTION 2

- (Exam Topic 3)

Which TCP port is used to connect to a network device by using Telnet?

- A. 23
- B. 69
- C. 400
- D. 830

Answer: A

NEW QUESTION 3

- (Exam Topic 3)

What is a comparison of YAML and JSON?

- A. YAML has a more consistent approach to representing data compared to JSON.
- B. JSON does not support comments and YAML does.
- C. YAML is a more verbose data structure compared to JSON.
- D. JSON has more common usage in configuration management tools compared to YAML.

Answer: B

Explanation:

Reference: <https://stackoverflow.com/questions/244777/can-comments-be-used-in-json>

Can I use comments in JSON? No, JSON is a data-only format. Comments in the form //, #, or /* */, which are used in popular programming languages, are not allowed in JSON. You can add comments to JSON as custom JSON elements that will hold your comments, but these elements will still be data.

NEW QUESTION 4

- (Exam Topic 3)

Which two commands download and execute an Apache web server container in Docker with a port binding 8080 in the container to 80 on the host? (Choose two.)

- A. docker pull apache
- B. docker run -p 8080:80 httpd
- C. docker run -p 80:8080 httpd
- D. docker pull httpd
- E. docker pull https

Answer: CD

NEW QUESTION 5

- (Exam Topic 3)

`get_interface_info_by_id(device_id, headers=None, **request_parameters)` [\[source\]](#)

Returns list of interfaces by specified device.

Parameters

- `device_id` (*basestring*) – Device ID.
- `headers` (*dict*) – Dictionary of HTTP Headers to send with the Request .
- `**request_parameters` – Additional request parameters (provides support for parameters that may be added in the future).

Returns

JSON response. Access the object's properties by using the dot notation or the bracket notation.

Return type

MyDict

Raises

- `TypeError` – If the parameter types are incorrect.
- `MalformedRequest` – If the request body created is invalid.
- `ApiError` – If the DNA Center cloud returns an error.

Refer to the exhibit. Drag and drop the code from the bottom onto the box where the code is missing to return the number of interfaces on a network device by using the Cisco DNA Center SDK. Not all options are used.

```
from dnacentersdk import DNACenterAPI
base_url = 'https://10.9.11.226'
[ ] = 'da4606c3-63ad-4ed4-8f35-6bfec7c2df04'

dnac = [ ](username='cisco', password='secret',
base url=base url, version='1.3.3', verify=False)

[ ] = [item['portName'] for item in
dnac. [ ].get_interface_info_by_id(device_id)['response']]

# Check the number of ports on the device
print(f'The list of interfaces contains {len(port_list)} items.')

# Output
# The list of interfaces contains 54 items.
```

router_id

device_id

DNACenterAPI

DNAC

port_list

routers

devices

- A. Mastered
 B. Not Mastered

Answer: A

Explanation:

```
from dnacentersdk import DNACenterAPI
base_url = 'https://10.9.11.226'
device_id = 'da4606c3-63ad-4ed4-8f35-6bfec7c2df04'

dnac = DNACenterAPI(username='cisco', password='secret',
base url=base url, version='1.3.3', verify=False)

port_list = [item['portName'] for item in
dnac.devices.get_interface_info_by_id(device_id)['response']]

# Check the number of ports on the device
print(f'The list of interfaces contains {len(port_list)} items.')

# Output
# The list of interfaces contains 54 items.
```

router_id

device_id

DNACenterAPI

DNAC

port_list

routers

devices

NEW QUESTION 6

- (Exam Topic 3)

```
import os
import requests

# username and password

API_USER_NAME = "devnetuser"
API_PASSWORD = os.environ['API_PASSWORD']

requests.get('https://api.cisco.com/end-service', auth=(API_USER_NAME, API_PASSWORD))
```

Refer to the exhibit. An engineer must authorize a REST API call. The API password is "Cisco123!". Which Bash command must be placed in the code to authorize the call?

- A. mkdir API_PASSWORD=Cisco123!
- B. set API_PASSWORD=Cisco123!
- C. cp API_PASSWORD=Cisco123!
- D. export API_PASSWORD=Cisco123!

Answer: D

NEW QUESTION 7

- (Exam Topic 3)

What is a benefit of version control?

- A. prevents two users from working on the same file
- B. keeps track of all changes to the files
- C. prevents the sharing of files
- D. keeps the list of data types used in the files

Answer: B

NEW QUESTION 8

- (Exam Topic 3)

A developer is working on a new feature in a branch named 'newfeat123456789' and the current working primary branch is named 'prim987654321'. The developer requires a merge commit during a fast forward merge for record-keeping purposes. Which Git command must be used?

- A. git merge --no-ff newfeat123456789
- B. git commit --no-ff newfeat123456789
- C. git add --commit-ff newfeat123456789
- D. git reset --commit-ff newfeat123456789

Answer: A

NEW QUESTION 9

- (Exam Topic 3)

A developer completed the creation of a script using Git. Before delivering it to the customer, the developer wants to be sure about all untracked files, without losing any information. Which command gathers this information?

- A. git clean -n
- B. git rm -f
- C. git clean -r
- D. git rm *

Answer: A

NEW QUESTION 10

- (Exam Topic 3)

Which function does a router provide to a network?

- A. broadcast domain segmentation
- B. unique host on a Layer 3 network
- C. unique hardware address for every node on a LAN
- D. broadcast domain extension

Answer: B

NEW QUESTION 10

- (Exam Topic 3)

A developer has addressed a bug that was found in the production code of an application. A separate file named 'bug427896191v_fix' has been created with the changes to the code. Which Git command must be used to incorporate the bug fix into the production code?

- A. git rebase
- B. git cat-file
- C. git merge-file
- D. git bisert

Answer: C

NEW QUESTION 11

- (Exam Topic 3)

Which Python function is used to parse a string that contains JSON data into a Python dictionary?

- A. json.dumps()
- B. json.to_json()
- C. json.parse()
- D. json.loads()

Answer: D

Explanation:

loads() function is present in python built-in 'json' module. This function is used to parse the JSON string.

NEW QUESTION 16

- (Exam Topic 3)

What is a benefit of using a code review process in application development?

- A. accelerates the deployment of new features in an existing application
- B. provides version control during code development
- C. enables the quick deployment of new code
- D. eliminates common mistakes during development

Answer: D

NEW QUESTION 21

- (Exam Topic 3)

How does edge computing analyze sensitive data in the context of privacy control?

- A. locally instead of sending the data to the cloud for analysis
- B. locally or on the cloud depending on the configuration
- C. all at once by sending the data to the cloud
- D. locally on each node, and then sends the data to the cloud

Answer: A

NEW QUESTION 23

- (Exam Topic 3)

```

1 import requests
2 from requests.auth import HTTPBasicAuth
3 BASE_URL = 'https://<IP ADDRESS or FQDN>'
4 AUTH_URL = '/dna/system/api/v1/auth/token'
5 TOKEN = '<TOKEN>'
6
7 headers = {'X-Auth-Token': TOKEN, 'Content-Type': 'application/json'}
8
9 DEVICES_COUNT_URL = '/dna/intent/api/v1/network-device/count'
10 DEVICES_URL = '/dna/intent/api/v1/network-device'
11 DEVICES_BY_ID_URL = '/dna/intent/api/v1/network-device/'
12
13 def devices_func(headers):
14     response = requests.get(BASE_URL + DEVICES_COUNT_URL,
15                             headers = headers, verify=False)
16     return response.json()['response']
17
18 def devices_test(headers, query_string_params):
19     response = requests.get(BASE_URL + DEVICES_URL, headers = headers,
20                             params = query_string_params, verify=False)
21     return response.json()['response']
22
23 def devices_info(headers, device_id):
24     response = requests.get(BASE_URL + DEVICES_BY_ID_URL + device_id,
25                             headers = headers, verify=False)
26     return response.json()['response']
27
28 print(devices_func(headers))
29 print(devices_test(headers, {}))
30 print(devices_test(headers, {'hostname': 'CSR1Kv-01.devnet.local'}))
31 response = devices_test(headers, {'platformId': 'C9500-40X'})
32 print(devices_info(headers, response[0]['id']))

```

Refer to the exhibit. An engineer prepares a script to automate workflow by using Cisco DNA Center APIs to display:

total count of devices
list of the network devices
information of one device with a hostname filter
What is displayed in the final step after the Python script is executed?

- A. information about a device of type C9500-40x.
- B. filtered results by the hostname and the platformId C9500-40X
- C. information about the test devices
- D. list of devices with platformId C9500-40x

Answer: B

NEW QUESTION 27

- (Exam Topic 3)

CISCO INTERSIGHT

Introduction

- Create Server Profile and Re...
- POST Create Server VMedia Policy
- GET Retrieve Server VMedia Policy...
- POST Create Server Boot Policy
- GET Retrieve Server Boot Policy by...
- POST Create Server NTP Policy
- GET Retrieve NTP Policy by Moid
- POST Create 'server-01' Server Profi...
- GET Retrieve 'server-01' Server Pr...
- POST Create 'server-02' Server Profi...
- GET Retrieve 'server-02' Server Pr...
- POST Update vmedia/Profiles Profi...
- POST Update Boot/PrecisionPolice...
- POST Update NTP/Policies Profiles ...
- GET Retrieve Server RackUnit Res...

Create Server Profile and Resources

POST Create Server VMedia Policy

https://www.intersight.com/api/v1/vmedia/Policies

| HEADERS | |
|---------------|-----------------------|
| Accept | application/json |
| Authorization | Signature {{httpsig}} |
| Digest | {{computed-digest}} |
| Date | {{current-date}} |
| Content-Type | application/json |

Refer to the exhibit. Drag and drop the code from the bottom onto the box where the code is missing to construct a Python script by using the Cisco SDK. Not all options are used.

```

import sys, json, argparse
from intersight.intersight_api_client import IntersightApiClient
from intersight.apis import asset_device_registration_api, asset_device_claim_api

result = dict(changed=False)

parser = argparse.ArgumentParser()
parser.add_argument('-a', '--api_params', default='intersight_api_params.json')
parser.add_argument('-t', '--target_host', dest='hostname', required=True)
args = parser.parse_args()
with open(args.api_params, 'r') as api_file:
    intersight_api_params = json.load( )
api_instance = IntersightApiClient(
    host=intersight_api_params[' '],
    private_key=intersight_api_params['api_private_key_file'],
    api_key_id=intersight_api_params['api_key_id'],
)
api_handle = asset_device_registration_api.AssetDeviceRegistrationApi(api_instance)

kwargs = dict(filter="ConnectionStatus eq 'Connected'")
= api_handle.asset_device_registrations_get(** )
for device in api_result.results:
    if device.device_ip_address[0] == args.hostname:
        api_handle = asset_device_claim_api.AssetDeviceClaimApi(api_instance)
        api_handle.asset_device_claims_moid_delete(moid=device.device_claim.moid)
        result['changed'] = True
        break

```

kwargs

args

api_file

api_key

api_base_uri

result

api_result

- A. Mastered
- B. Not Mastered

Answer: A

Explanation:

```
import sys, json, argparse
from intersight.intersight_api_client import IntersightApiClient
from intersight.apis import asset_device_registration_api, asset_device_claim_api

result = dict(changed=False)

parser = argparse.ArgumentParser()
parser.add_argument('-a', '--api_params', default='intersight_api_params.json')
parser.add_argument('-t', '--target_host', dest='hostname', required=True)
args = parser.parse_args()
with open(args.api_params, 'r') as api_file:
    intersight_api_params = json.load( api_file )
api_instance = IntersightApiClient(
    host=intersight_api_params[' api_base_uri '],
    private_key=intersight_api_params['api_private_key_file'],
    api_key_id=intersight_api_params['api_key_id'],
)
api_handle = asset_device_registration_api.AssetDeviceRegistrationApi(api_instance)

kwargs = dict(filter="ConnectionStatus eq 'Connected'")
result = api_handle.asset_device_registrations_get(** kwargs )
for device in api_result.results:
    if device.device_ip_address[0] == args.hostname:
        api_handle = asset_device_claim_api.AssetDeviceClaimApi(api_instance)
        api_handle.asset_device_claims_moid_delete(moid=device.device_claim.moid)
        result['changed'] = True
        break
```

kwargs args api_file api_key api_base_uri result

api_result

NEW QUESTION 30

- (Exam Topic 3)

What is a benefit of a CI/CD pipeline for infrastructure?

- A. removes manual errors
- B. enables manual steps
- C. removes the need for operations
- D. provides variety for deployments

Answer: A

NEW QUESTION 32

- (Exam Topic 3)

A developer plans to deploy a new application that will use an API to implement automated data collection from Webex with these requirements:

The application was created by using the request library. Requires HTTP basic authentication.

Provides data in JSON or XML formats.

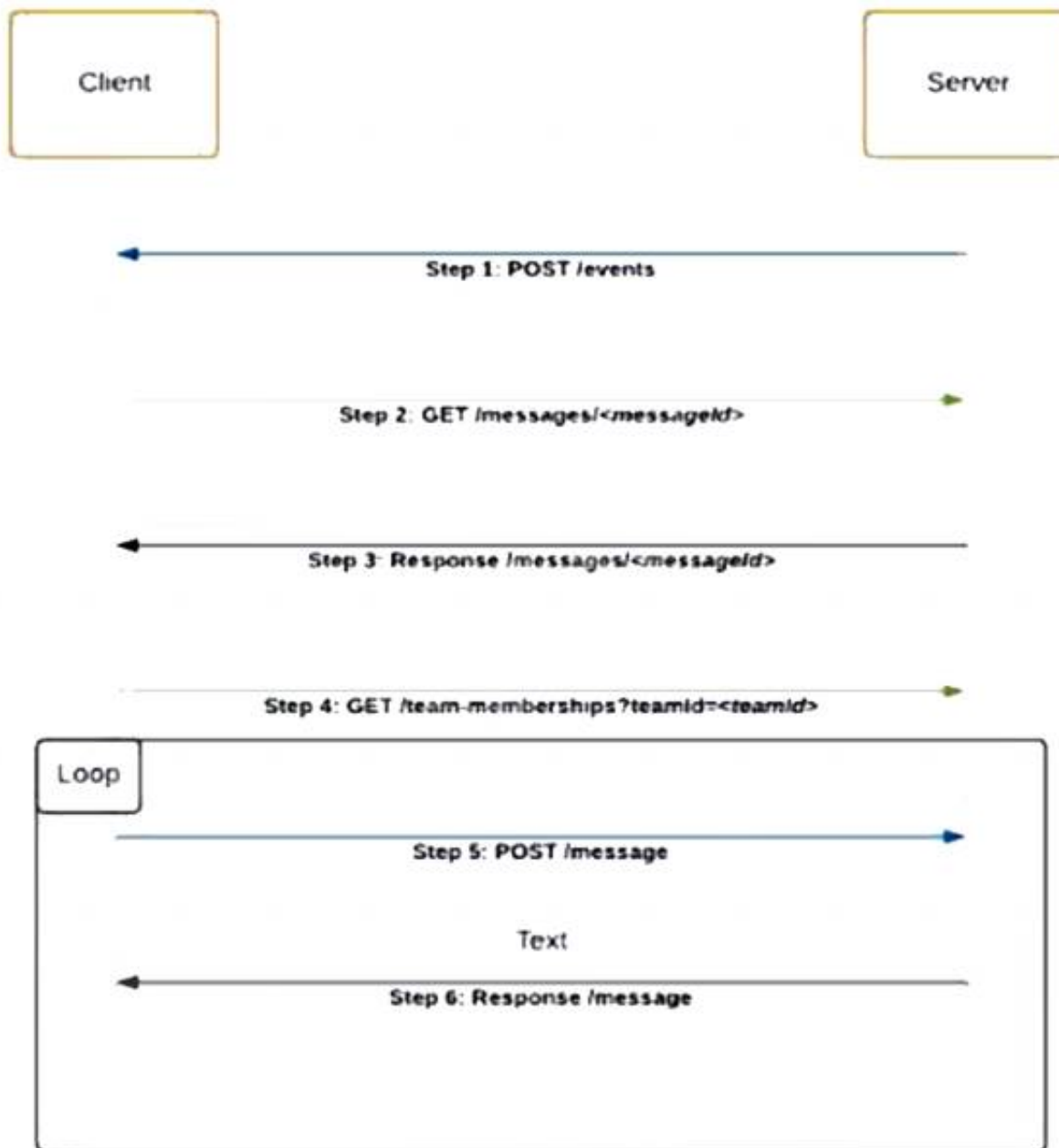
Which Cisco DevNet resource helps the developer with how to use the API?

- A. DevNet sandbox
- B. API documentation
- C. forums
- D. DevNet code exchange

Answer: B

NEW QUESTION 37

- (Exam Topic 3)



Refer to the exhibit. Which code snippet represents the sequence.

- A.

```
@flask_app.route('/events', methods=['POST'])
def webex_teams_webhook_events():
    json_data = request.json['data']
    response = requests.get(MESSAGE_URL +
    json_data['id'], headers=headers)
    if response.json()['text'] == 'Alert':
        response = requests.get(Team_MEMBERSHIPS_URL,
    headers=headers, params=params)
    for info in response.json()['items']:
        data = {'personId': info['personId'], 'text':
    'Alert'}
        response = requests.post(MESSAGES_URL,
    headers=headers, params=params)
```
- B.

```
@flask_app.route('/events', methods=['POST'])
def webex_teams_webhook_events():
    json_data = request.json['data']
    if response.json()['text'] == 'Alert':
        response = requests.get(MESSAGE_URL +
    json_data['id'], headers=headers)
        response = requests.get(Team_MEMBERSHIPS_URL,
    headers=headers, params=params)
    for info in response.json()['items']:
        data = {'personId': info['personId'],
    'text': 'Alert'}
        response = requests.post(MESSAGES_URL,
    headers=headers, params=params)
```

C.


```
@flask_app.route('/events', methods=['POST'])
def webex_teams_webhook_events():
    json_data = request.json['data']
    response = requests.post(MESSAGE_URL +
    json_data['id'], headers=headers)
    if response.json()['text'] == 'Alert':
        for info in response.json()['items']:
            response = requests.get(Team_MEMBERSHIPS_URL,
            headers=headers, params=params)
            data = ('personId': info['personId'], 'text':
            'Alert')
            response = requests.get(MESSAGES_URL,
            headers=headers, params=params)
```

D.

```
@flask_app.route('/events', methods=['POST'])
def webex_teams_webhook_events():
    json_data = request.json['data']
    response = requests.get(Team_MEMBERSHIPS_URL,
    headers=headers, params=params)
    if response.json()['text'] == 'Alert':
        response = requests.get(MESSAGE_URL +
    json_data['id'], headers=headers)
        for info in response.json()['items']:
            data = ('personId': info['personId'], 'text':
            'Alert')
            response = requests.post(MESSAGES_URL,
            headers=headers, params=params)
```

Answer: C

NEW QUESTION 38

- (Exam Topic 3)

An engineer needs to retrieve a list of locally available Firepower Threat Defense upgrade packages by using the Firepower Management Center REST API. The engineer uses a GET request with the URL:

/api/fmc_platform/v1/updates/upgradepackages/f413afeb-e6f6-75f4-9169-6d9bd49s625e

What does “f413afeb-e6f6-75f4-9169-6d9bd49s625e” represent?

- A. container UUID
- B. package UUID
- C. domain UUID
- D. object UUID

Answer: B

Explanation:

"GET upgradepackages Request Type: GET

Description: Retrieves a list of locally available Firepower Threat Defense upgrade packages, including major upgrades, maintenances release upgrades, and hotfixes.

URL: /api/fmc_platform/v1/updates/upgradepackages

URL for GET by ID: /api/fmc_platform/v1/updates/upgradepackages/{package_UUID}" Source:

https://www.cisco.com/c/en/us/td/docs/security/firepower/640/api/REST/Firepower_Management_Center_RES

NEW QUESTION 43

- (Exam Topic 3)

Which OWASP threat occurs when untrusted data is supplied as input to an interpreter as part of a command or query?

- A. broken authentication
- B. data exposure
- C. injection
- D. cross-site scripting

Answer: C

NEW QUESTION 48

- (Exam Topic 3)

An engineer must configure Cisco Nexus devices and wants to automate this workflow. The engineer will use an Ansible playbook to configure devices through Cisco NX REST API. Before the code is run, which resource must be used to verify that the REST API requests work as expected?

- A. Cisco Open NX-OS
- B. Cisco NX-OS SDK
- C. Cisco Learning Labs
- D. Cisco Code Exchange for Nexus

Answer: C

NEW QUESTION 50

- (Exam Topic 3)

What is a benefit of using model-driven programmability for infrastructure automation?

- A. connected user tracking
- B. infrastructure resource optimization
- C. multiple device control protocols
- D. device performance monitoring

Answer: C

NEW QUESTION 51

- (Exam Topic 3)

What is a feature of XML compared to other data formats?

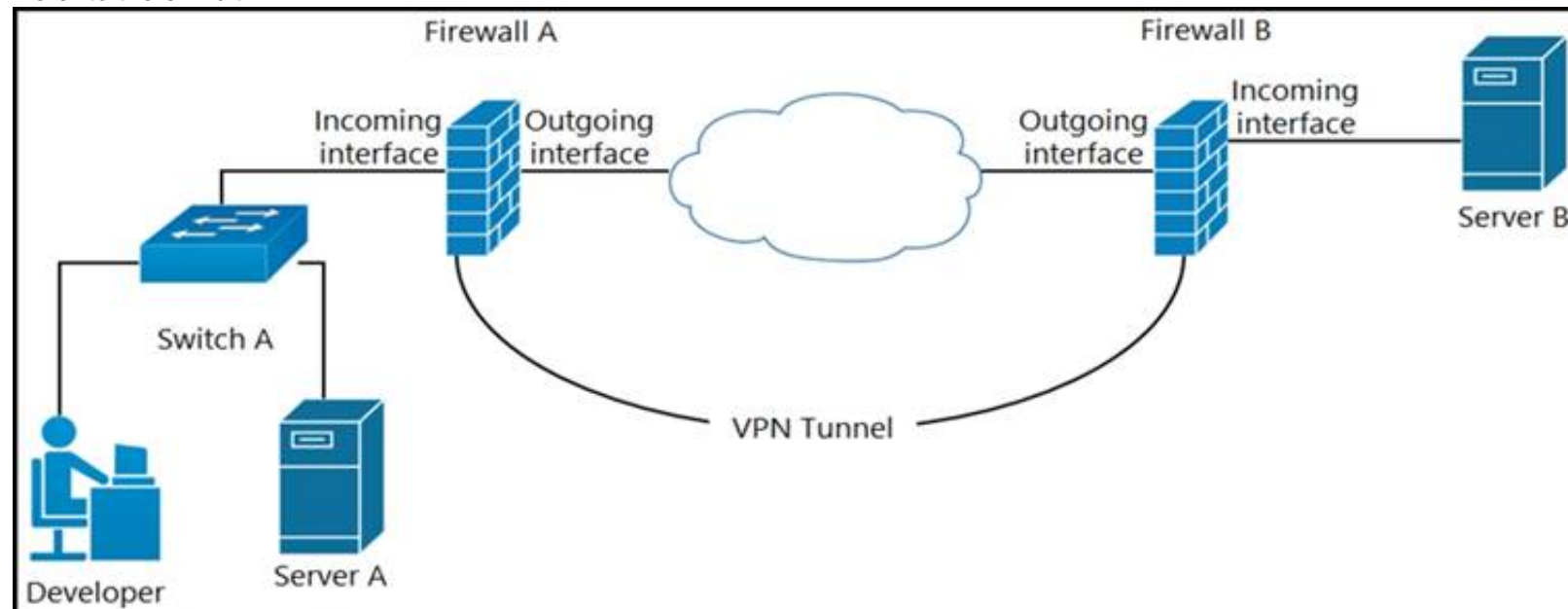
- A. It uses tags to define the structure.
- B. It uses parenthesis for key-value pairs.
- C. It uses indentation to define the structure.
- D. It uses namespaces for list representation.

Answer: A

NEW QUESTION 55

- (Exam Topic 3)

Refer to the exhibit.



A developer can access the TLS REST API on server A, but cannot access the API on server B. The developer can ping server B. When the developer performs a packet capture on the TLS REST API port on server B, the capture shows that the packet arrived and the server responded. What causes the issue?

- A. Port 80 is blocked on the outgoing interface of firewall B.
- B. Port 443 is blocked on the outgoing interface of firewall A.
- C. Port 443 is blocked on the incoming interface of firewall B.
- D. Port 80 is blocked on the incoming interface of firewall A.

Answer: C

NEW QUESTION 56

- (Exam Topic 3)

Why would a developer compare a current version of code to a previous version?

- A. to provide the single source of truth
- B. to troubleshoot code failures
- C. to track who made a change
- D. to aid in collaboration

Answer: B

NEW QUESTION 60

- (Exam Topic 3)

A developer writes an application that refines data in temporary secure file storage hosted on the public cloud. Data will be deleted after processing and does not contain any private information. What is the advantage that a public cloud deployment provides to the developer?

- A. high security with encryption

- B. ease in infrastructure management
- C. flexible development
- D. bespoke services

Answer: B

NEW QUESTION 65

- (Exam Topic 3)

Which protocol runs over TCP port 830?

- A. NETCONF
- B. Telnet
- C. RESTCONF
- D. HTTP

Answer: A

NEW QUESTION 67

- (Exam Topic 3)

An engineer deploys a Cisco CSR 1000 V instance to a virtual machine. The engineer must output the device configuration in JSON format. Which protocol is used for this task?

- A. YANG
- B. NETCONF
- C. SNMP
- D. RESTCONF

Answer: D

NEW QUESTION 69

- (Exam Topic 3)

An engineer prepares a set of Python scripts to interact with network devices. To avoid network performance issues, the engineer wants to run them in a test environment. Which resource must be used to monitor the live execution of code in an always-available environment?

- A. packet tracer
- B. learning labs
- C. sandbox
- D. code exchange

Answer: C

NEW QUESTION 73

- (Exam Topic 3)

What is a capability of Ansible playbooks?

- A. They execute scheduled tasks regularly.
- B. They define the state for a device configuration.
- C. They collect SNMP logs from networking devices.
- D. They utilize the target device agent to execute.

Answer: A

NEW QUESTION 78

- (Exam Topic 3)

Refer to the exhibit.


```

1  <routing xmlns="urn:ietf:params:xml:ns:yang:ietf-routing">
2    <routing-instance>
3      <name>default</name>
4      <description>default-vrf [read-only]</description>
5      <routing-protocols>
6        <routing-protocol>
7          <type xmlns:ospf="urn:ietf:params:xml:ns:yang:ietf-
*          ospf">ospf:ospfv2</type>
8          <name>100</name>
9          <ospf xmlns="urn:ietf:params:xml:ns:yang:ietf-ospf">
10             <instance>
11               <af xmlns:rt="urn:ietf:params:xml:ns:yang:ietf-
*               routing">rt:ipv4</af>
12               <router-id>1.1.1.1</router-id>
13               <nsr>
14                 <enable>false</enable>
15               </nsr>
16               <auto-cost>
17                 <enable>false</enable>
18               </auto-cost>
19               <redistribution
*               xmlns="urn:ietf:params:xml:ns:yang:cisco-ospf">
20                 <rip/>
21               </redistribution>
22             </instance>
23           </ospf>
24         </routing-protocol>
25       </routing-protocols>
26     </routing-instance>
27   </routing>

```

What are two characteristics of the NETCONF response? (Choose two.)

- A. ospf is defined by the ietf-ospf module.
- B. ietf-ospf imports ietf-routing.
- C. redistribution is a module of type cisco-ospf.
- D. routing protocols is a list.
- E. The main module is routing.

Answer: BC

NEW QUESTION 80

- (Exam Topic 3)

Which HTTP method is used by webhooks and notifies a listener about an event change?

- A. PUT
- B. POST
- C. PATCH
- D. GET

Answer: B

NEW QUESTION 81

- (Exam Topic 3)

A developer must test the performance and reliability of an application. After functional and load tests are run, the application crashes due to traffic spikes from users. Which type of API constraint must be implemented to maintain reliability?

- A. rate limiting
- B. pagination
- C. payload limits
- D. filtering

Answer: A

NEW QUESTION 85

- (Exam Topic 3)

Which technology is responsible for matching a name to an IP address of an application running on a host?

- A. firewall
- B. proxy
- C. load balancer
- D. DNS

Answer: D

NEW QUESTION 86

- (Exam Topic 3)

An engineer must make changes on a network device through the management platform API. The engineer prepares a script to send the request and analyze the response, check headers, and read the body according to information inside response headers. Drag and drop the HTTP header values from the left onto the elements of an HTTP response on the right.

| | |
|--------------------------------|----------------|
| 16974 | cache-control |
| no-store, must-revalidate | content-length |
| timeout=5, max=100 | keep-alive |
| application/json;charset=UTF-8 | content-type |

- A. Mastered
- B. Not Mastered

Answer: A

Explanation:

| | |
|--------------------------------|--------------------------------|
| 16974 | no-store, must-revalidate |
| no-store, must-revalidate | 16974 |
| timeout=5, max=100 | timeout=5, max=100 |
| application/json;charset=UTF-8 | application/json;charset=UTF-8 |

NEW QUESTION 91

- (Exam Topic 3)
What is a characteristic of Waterfall compared to Agile software development method?

- A. Waterfall focuses on continuous improvement, and Agile focuses on the design phase.
- B. Waterfall separates the project development lifecycle into sprints, and Agile does not use cycles.
- C. Waterfall specifies requirements before development begins, and Agile responds flexibly to changes in requirements.
- D. Waterfall uses reviews with step by step approach, and Agile uses a serially phased approach.

Answer: C

NEW QUESTION 93

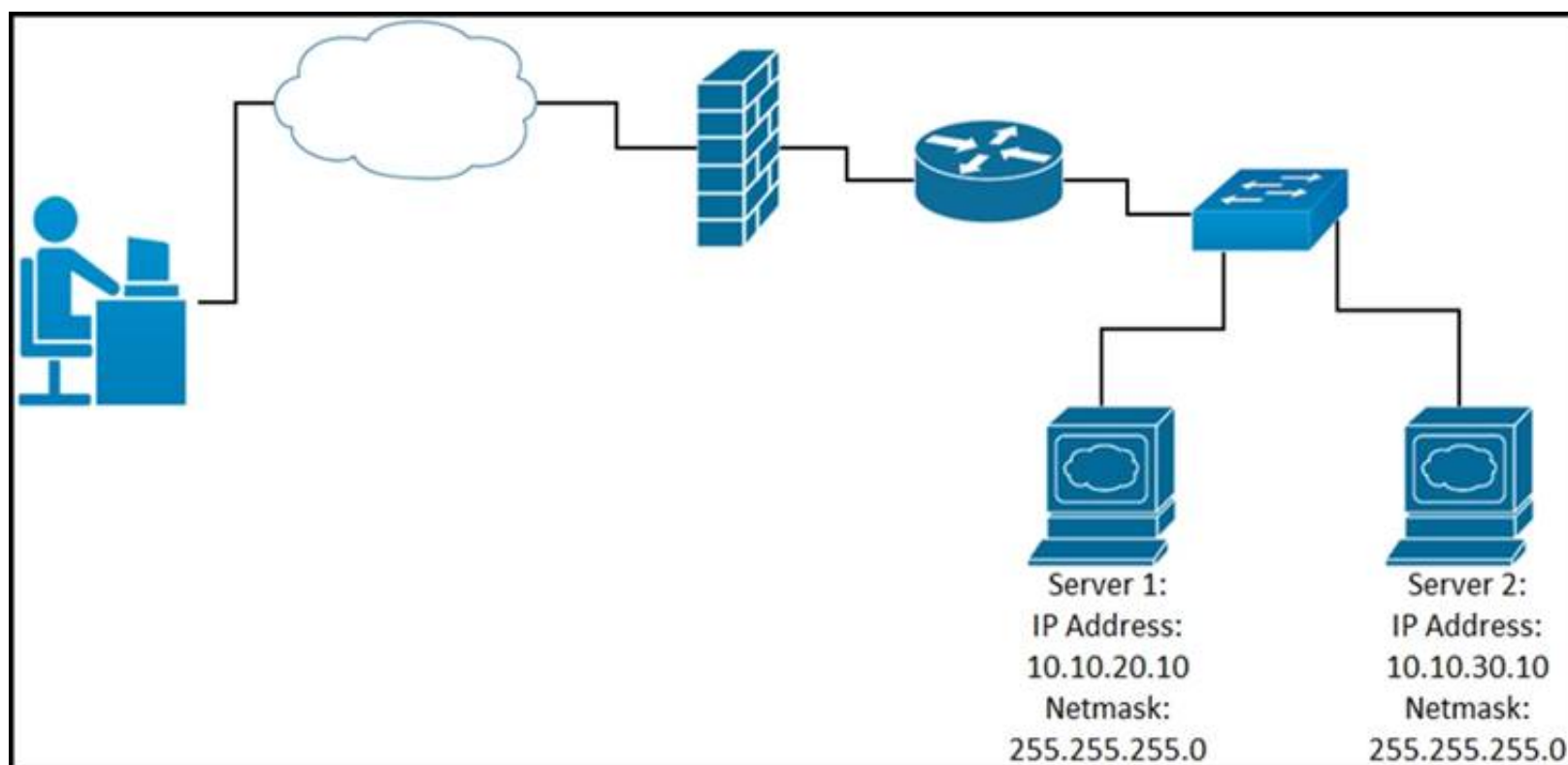
- (Exam Topic 3)
What is a capability of the AXL API?

- A. It signs a user in to a phone that is configured for extension mobility.
- B. It pulls logs for the Cisco Tomcat service.
- C. It authenticates users who exist in Cisco Unified Communications Manager.
- D. It provides support for HTTP and HTTPS communications.

Answer: C

NEW QUESTION 96

- (Exam Topic 3)
Refer to the exhibit.



While developing a Cisco Webex bot, an application reaches the public IP address of the firewall, but traffic is forwarded to the IP address of server 1 instead of the IP address of server 2. What causes this issue?

- A. The proxy server that rewrites traffic is misconfigured.
- B. The router is sending the traffic to server 1 instead of server 2.
- C. The switch is forwarding IP traffic to the wrong VLAN.
- D. NAT is misconfigured on the firewall.

Answer: D

NEW QUESTION 101

- (Exam Topic 3)

```
user@host1:~/tmp$ cat Dockerfile
# Dockerfile to install traceroute
FROM ubuntu
MAINTAINER User One (userone@cisco.com)
RUN apt-get update && apt-get install traceroute
```

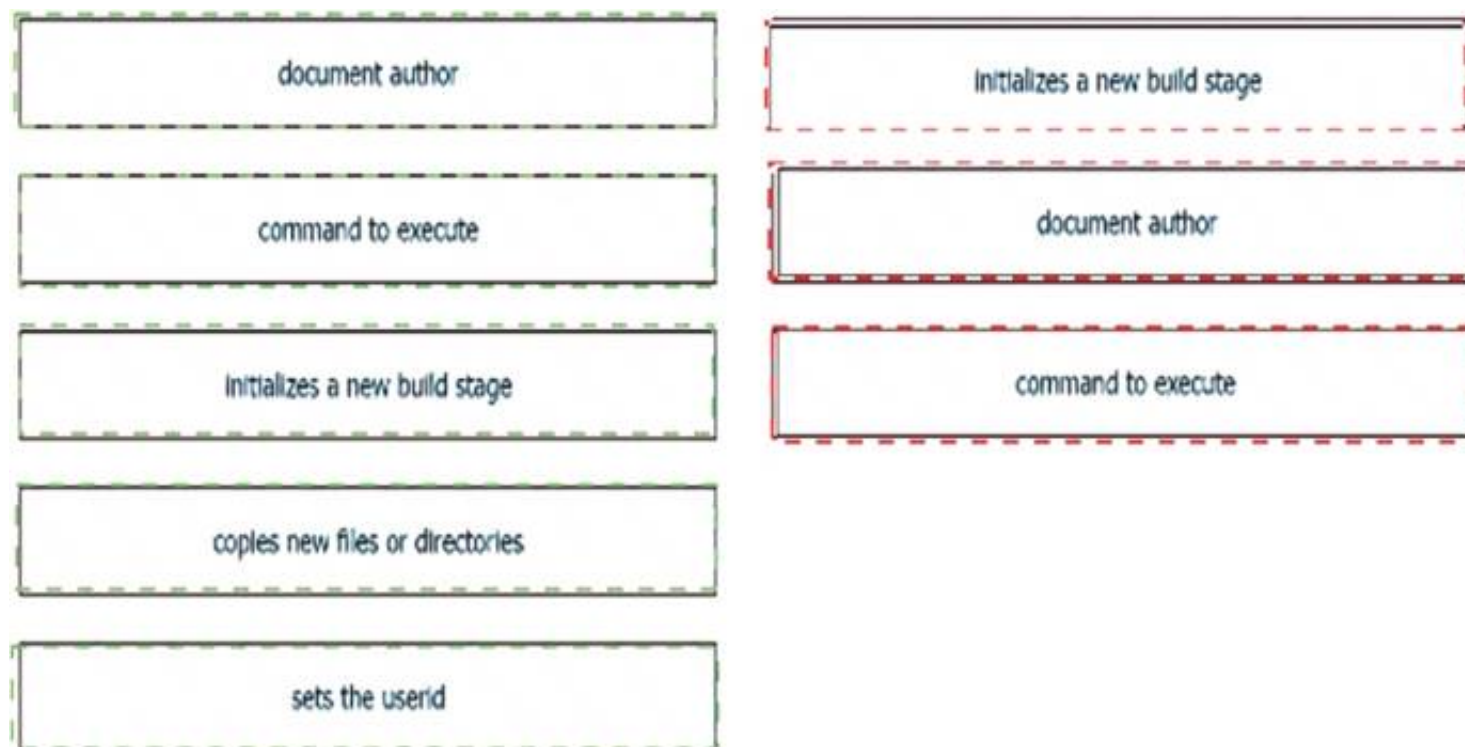
Refer to the exhibit. Drag and drop the Dockerfile contents from the left onto the functions on the right that create a container image to run traceroute to track network path to specific targets. Not all options are used.

| | |
|---------------------------------|--|
| document author | FROM ubuntu |
| command to execute | MAINTAINER User One (userone@cisco.com) |
| initializes a new build stage | RUN apt-get update && apt-get install traceroute |
| copies new files or directories | |
| sets the userid | |

- A. Mastered
- B. Not Mastered

Answer: A

Explanation:



NEW QUESTION 106

- (Exam Topic 3)

A file in a local Git repository has been updated and issued the git add . command. The git diff command has been run to compare the changes to the previous commit, but nothing shows. Which action identifies the problem?

- A. Run the git add . command again in the correct subdirectory to ensure changes added to the staging area.
- B. Run the git commit command before the differences are compared to receive the end state of the code.
- C. Run the git status command to see the differences between current and previous code review stages.
- D. Run the git diff --staged command to compare the code added to the staging area.

Answer: D

NEW QUESTION 111

- (Exam Topic 3)

A business needs to create a simulated environment that mimics a production infrastructure to make changes to the OSPF process and analyze the impact. What should be used?

- A. Cisco VIRL / Cisco CML
- B. Cisco DevNet Sandbox labs
- C. pyATS
- D. Puppet

Answer: A

Explanation:

<https://www.cisco.com/c/en/us/products/cloud-systems-management/modeling-labs/index.html>

NEW QUESTION 112

- (Exam Topic 3)

Which IP service synchronizes the time across devices?

- A. DNS
- B. NTP
- C. SNMP
- D. NAT

Answer: B

NEW QUESTION 114

- (Exam Topic 3)

What is the function of an Ethernet switch in a networking environment?

- A. to switch a frame from one port to another port based on IP address
- B. to switch a frame from one port to another port based on MAC address
- C. to provide IP addressing to connected hosts
- D. to block unwanted traffic

Answer: B

NEW QUESTION 118

- (Exam Topic 3)

```
import requests, json
url = https://sandboxdnac.cisco.com:443/dna/intent/api/v1/3daa70bdcd5b
headers = {
    'x-auth-token': 'eyJhbGc ... yJbN8',
    'Content-Type': 'application/json',
}
payload = {
    "settings": {
        "dhcpServer": ["172.30.200.5"],
        "dnsServer": {
            "domainName": "devnet.local",
            "primaryIpAddress": "172.30.200.6",
            "secondaryIpAddress": "172.30.200.7"},
        "syslogServer": {"ipAddresses": ["10.255.0.1"], "configureDnacIP": True}
    }
}
response = requests.request('POST', url, headers=headers, data=payload)
print(response.status_code)
```

Refer to the exhibit. A developer writes a script to create a new network by using the Cisco DNA Center API. After running the script for the first time, the developer observes that HTTP code 404 is printed to the console. Which action resolves the problem?

- A. The x-auth-token value must be changed to a valid token.
- B. The API URL must be changed with a valid URL.
- C. The requested payload must be fixed to include missing parts.
- D. Internal errors on the code of API server must be fixed.

Answer: B

NEW QUESTION 120

- (Exam Topic 3)

Drag and drop the API characteristics from the left onto the categories on the right.

| | |
|---|------|
| The API is seen as a function call. | REST |
| There is communication between server and client. | |
| It follows a resource-oriented model. | RPC |
| The API can be stateless. | |

- A. Mastered
- B. Not Mastered

Answer: A

Explanation:

Graphical user interface, application Description automatically generated

NEW QUESTION 123

- (Exam Topic 3)

```
$ find /home/user/backup -mtime +30 -type f -print
$ find /home/user/backup -mtime +30 -type f -delete
```

Refer to the exhibit. An engineer is managing the network of an enterprise. The network is using a distributed deployment model. The enterprise uses database to store logs. The current policy requires logs to be stored if changes are made to the infrastructure in any of the devices on the data centers. Which workflow is being automated by the Bash script?

- A. returning backup files that are older than 30 days
- B. deleting backup files that are older than 30 days
- C. configuring the directory to delete files automatically
- D. automating deletion of all backup files every 30 days

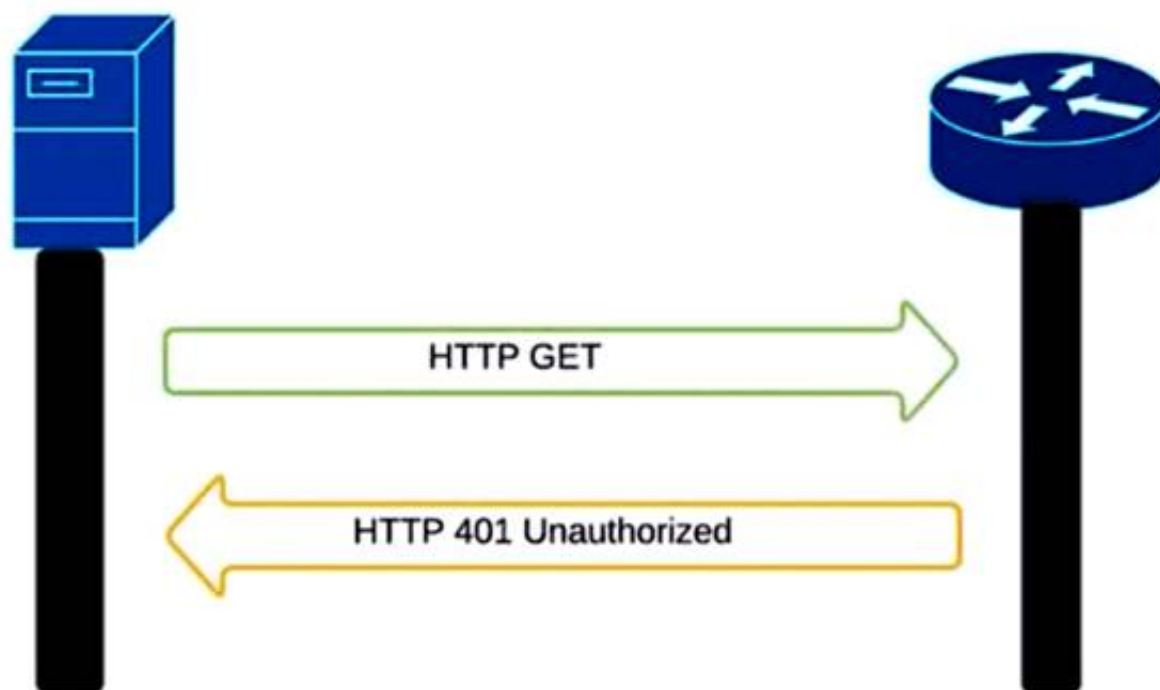
Answer: B

NEW QUESTION 128

- (Exam Topic 3)

Refer to the exhibit.

```
curl -i -k -X 'GET' 'https://172.18.110.64:443/restconf/data/Cisco-IOS-XE-native:native/hostname'
-H 'Accept: application/yang-data+json' \
-u 'cisco:cisco'
```



An administrator attempts to perform a GET operation by using the Cisco IOS XE RESTCONF API to return the hostname of a device. The sequence diagram in the exhibit illustrates the HTTP messages observed. Which change to the API request resolves the issue?

- A. Remove the -H 'Accept: application/yang-data+json' header.
- B. Replace -u cisco:cisco parameter with -u 'cisco:cisco'.
- C. Change the request method from -X 'GET' to -X 'POST'.
- D. Add the -H 'Content-Type: application/yang-data+json' header.

Answer: B

NEW QUESTION 133

- (Exam Topic 3)

A company deploys an application via containers in its local data center. As soon as the application goes into production, it starts to crash at specific hours of the day. After investigation, it is concluded that the crashes are due to too many users accessing the application simultaneously. The spikes must be addressed and allow for future growth without discarding the investment already made. Which deployment model must be used?

- A. hybrid cloud
- B. edge
- C. private cloud
- D. public cloud

Answer: A

NEW QUESTION 136

- (Exam Topic 3)

Which action do webhooks enable an application to perform?

- A. Increase the request rate limit.
- B. Populate the application with restricted data.
- C. Receive real-time data.
- D. Implement a push model.

Answer: D

Explanation:

Simplifying the wording: Webhook enables the app to (push or receive real time) . The clients should receive real time but the app pushes.

NEW QUESTION 141

- (Exam Topic 3)

```
HTTPS/1.1 201 Created
Date: Tue, 08 Nov 2020 09:37:27 GMT
Server: example-server
Location: https://example.com/restconf/data\
    example-jukebox/library/dogbreed=Australian%20Cattle%20Dog
Last Modified: Tue 08 Nov 2020 09:37:27 GMT
ETag: "s1878124t4c"
```

Refer to the exhibit. Which RESTCONF request results in this response?

- A.
- ```
GET /restconf/data/example-jukebox:jukebox/library HTTP/1.1
Host: example.com
Content-Type: application/yang-data-json

{
 "Example-jukebox:dogbreed" : [
 {
 "name" : "Australian Cattle Dog"
 }
]
}
```
- B.
- ```
CONFIG /restconf/data/example-jukebox:jukebox/library HTTP/1.1
Host: example.com
Content-Type: application/yang-data-json

{
  "Example-jukebox:dogbreed" : [
    {
      "name" : "Australian Cattle Dog"
    }
  ]
}
```
- C.
- ```
PUT /restconf/data/example-jukebox:jukebox/library HTTP/1.1
Host: example.com
Content-Type: application/yang-data-json

{
 "Example-jukebox:dogbreed" : [
 {
 "name" : "Australian Cattle Dog"
 }
]
}
```
- D.
- ```
POST /restconf/data/example-jukebox:jukebox/library HTTP/1.1
Host: example.com
Content-Type: application/yang-data+json

{
  "Example:dogbreed" : [
    {
      "name" : "Australian Cattle Dog"
    }
  ]
}
```

Answer: D

NEW QUESTION 143

- (Exam Topic 3)

Drag and drop the code from the bottom onto the box where the code is missing to complete the error path scenario. Not all options are used.

```
import pytest
class Player:
    def __init__(self, name):
        self.name = name
        [redacted]
    def set_rating(self, rating):
        if rating or rating is int(0):
            [redacted]:
                raise ValueError('rating is invalid', rating)
            else:
                [redacted]
                return True
        else:
            return False
@pytest.fixture
def player():
    player = Player('User One')
    yield player
    del player
@pytest.mark.usefixtures('player')
class TestErrorPathSetRating:
    def test_add_higher_rating(self, player):
        with pytest.raises(ValueError):
            player.set_rating(101)
    def test_add_invalid_rating(self, player):
        with pytest.raises(ValueError):
            [redacted]
    def test_add_lower_rating(self, player):
        with pytest.raises(ValueError):
            player.set_rating(-1)
```

| | |
|--------------------------------|--------------------------------|
| player.set_rating(0) | if rating != 0: |
| player.set_rating(85) | if rating or rating is int(0): |
| if rating < 1 or rating > 100: | self.rating = rating |
| self.rating = None | |

- A. Mastered
B. Not Mastered

Answer: A

Explanation:

```
import pytest
class Player:
    def __init__(self, name):
        self.name = name
        self.rating = None
    def set_rating(self, rating):
        if rating or rating is int(0):
            if rating < 1 or rating > 100:
                raise ValueError('rating is invalid', rating)
            else:
                if rating != 0:
                    return True
        else:
            return False
@pytest.fixture
def player():
    player = Player('User One')
    yield player
    del player
@pytest.mark.usefixtures('player')
class TestErrorPathSetRating:
    def test_add_higher_rating(self, player):
        with pytest.raises(ValueError):
            player.set_rating(101)
    def test_add_invalid_rating(self, player):
        with pytest.raises(ValueError):
            player.set_rating(0)
    def test_add_lower_rating(self, player):
        with pytest.raises(ValueError):
            player.set_rating(-1)
```

| | |
|--------------------------------|--------------------------------|
| player.set_rating(0) | if rating != 0: |
| player.set_rating(85) | if rating or rating is int(0): |
| if rating < 1 or rating > 100: | self.rating = rating |
| self.rating = None | |

NEW QUESTION 146

- (Exam Topic 3)

Drag and drop the characteristics from the left onto the corresponding categories on the right to compare RESTful and RPC APIs.

Answer Area

stateless

session-based

must use HTTP

sometimes uses HTTP

RESTful

RPC

- A. Mastered
- B. Not Mastered

Answer: A

Explanation:

stateless

session-based

must use HTTP

sometimes uses HTTP

RESTful

stateless

sometimes uses HTTP

RPC

session-based

must use HTTP

NEW QUESTION 150
- (Exam Topic 3)
What is a firehose webhook?

- A. It collects data from third-party cloud APIs for custom applications.
- B. It enables an application to receive real-time data from Cisco Webex.
- C. It enables data to flow from the Cisco Webex API to a user's application.
- D. It sends a notification of any event for commonly used resources.

Answer: D

NEW QUESTION 154
- (Exam Topic 3)


```

--- functions.py 2020-09-26 14:26:25.000000000 -0600
--- new.py 2020-09-26 14:26:10.000000000 -0600
@@ -21,7 +21,7 @@
def print_devices_info(devices):
    # Print id, hostname and management IP
    for item in devices:
-        print(item['id'], item['hostname'], item['managementIpAddress'])
-        print(item['id'], item['hostname'])

    # Get Authentication token
    def get_dnac_jwt_token():
@@ -66,9 +66,15 @@
    response = get_devices_list(headers, {})
    print_devices_info(response)

-    # print devices list filtered by hostname
-    print('\nPrinting device list filtered by hostname ...')
-    query_string_params = {'hostname': 'CSR1Kv-01.devnet.local'}
-    response = get_devices_list(headers, query_string_params)
-    print_devices_info(response)
-
-    # print devices list filtered by platform Id
-    print('\nPrinting device list filtered by platform id...')
-    query_string_params = {'platformId': 'C9500-40X'}
-    query_string_params = {'platformId': 'AIR-AP1141N-A-K9'}
    response = get_devices_list(headers, query_string_params)
    print_devices_info(response)

```

Refer to the exhibit. An engineer is comparing two files by using the unified diff format. Which code snippet belongs to the new.py file?

- A.

```
77 query_string_params = {'platformId':
'AIR-AP1141N-A-K9'}
```
- B.

```
21 print(item['id'], item['hostname'])
```
- C.

```
24 print(item['id'], item['hostname'],
item['managementIpAddress'])
```
- D.

```
66 # print devices list filtered by
hostname
67 print('\nPrinting device list
filtered by hostname ...')
68 query_string_params = {'hostname':
'CSR1Kv-01.devnet.local'}
69 response = get_devices_list
(headers, query_string_params)
70 print_devices_info(response)
```

Answer: A

NEW QUESTION 155

- (Exam Topic 3)

A developer creates a program in which an object maintains a list of classes based on the observer pattern. The classes are dependent on the object. Whenever the state of the object changes, it notifies the dependent classes directly through callbacks. Which advantage of the observer pattern offers minimum dependencies and maximum flexibility between dependent objects or classes?

- A. tight coupling
- B. cohesion
- C. mediation
- D. loose coupling

Answer: D

NEW QUESTION 156

- (Exam Topic 3)

```

- hosts: nxos_rtr
  gather_facts: false
  tasks:
    - nxos_hsrp:
      group: "{{ item.group }}"
      vip: "{{ item.vip }}"
      priority: 115
      interface: "{{ item.interface }}"
      preempt: enabled
      auth_type: md5
      auth_string: "s3cuR3"
      version: 2
      host: "{{ hostvars['rtr-1a']['ansible_ssh_host'] }}"
    with_items:
      - "{{ hsrp_groups }}"
    delegate_to: "{{ hostvars['srv-1a']['ansible_ssh_host'] }}"

```

Refer to the exhibit. An engineer runs a network that consists of Cisco Nexus devices. The network is distributed between data centers in different locations. The switches are configured using standalone connections and a single point of failure. Which process is being automated by the Ansible playbook?

- A. enabling HSRP on the nxos_rtr inventory host
- B. enabling HSRP on the rtr-1a inventory host
- C. executing HSRP configuration from the Ansible controller node
- D. executing HSRP configuration from the srv-1a inventory host

Answer: B

NEW QUESTION 159

- (Exam Topic 3)

Drag and drop the code from the bottom onto the box where the code is missing to obtain a list of network devices by using the Cisco Meraki API. Not all options are used.

```

import requests

url = "https://api.meraki.com/api/v0/ [ ] /{{networkId}}/[ ] "

payload = {}
headers = {
    'Accept': '*/*'
}

response = requests.request("[ ]", url, headers=headers, data=payload)

print(response.text.[ ] ('utf8'))

```

- A. Mastered
- B. Not Mastered

Answer: A

Explanation:

```

import requests

url = "https://api.meraki.com/api/v0/[networks] /{{networkId}}/[devices] "

payload = {}
headers = {
    'Accept': '*/*'
}

response = requests.request("[GET]", url, headers=headers, data=payload)

print(response.text.[encode] ('utf8'))

```

NEW QUESTION 164

- (Exam Topic 3)

Which port does HTTPS use by default?

- A. 433
- B. 443
- C. 803

D. 883

Answer: B

NEW QUESTION 169

- (Exam Topic 3)

A developer attempts to refactor and improve the application code. It is noticed that the code contains several pieces of key information that could be a security threat if this code is accessible by those who are not authorized to this data. Which approach addresses the security concerns noticed by the developer?

- A. Host the application code on a machine located in a secure data center.
- B. Utilize environment variables for username and password details.
- C. Rely on the security teams' goodwill to not give access to those who do not need it.
- D. Move the hardware that the application is deployed on to a secure location.

Answer: B

NEW QUESTION 174

- (Exam Topic 3)

Which platform has an API that has the capability to obtain a list of vulnerable software on user devices?

- A. Cisco Advanced Malware Protection
- B. Cisco Umbrella
- C. Cisco Identity Services Engine
- D. Cisco Firepower

Answer: A

NEW QUESTION 178

- (Exam Topic 3)

Refer to the exhibit.

```
import requests

base_url = f"https://webexapis.com/v1/people"

headers = {
    "Accept": "application/json"
}

person_email = 'customer@company.com'
url = f"{base_url}?email={person_email}"

response = requests.request("GET", url, headers=headers)

if response.status code == 200 :
    print(f"OK - Added {person_email}")
else:
    print(f"ERROR CODE {response.status code}")
```

A collaboration engineer has developed a script to automate the gathering of information by providing the email address of the individual. When the engineer tests the script, a 401 error is received. Which command fixes the script?

- A. Add "Authorization": "Bearer <WEBEX_TOKEN>" to the headers
- B. Add "Authentication": "Basic <WEBEX_TOKEN>" in the base_url after "https://".
- C. Add "<Authorization>:<password>@" in the base_url after "https://".
- D. Add "Authentication": "Bearer <WEBEX TOKEN>" to the headers

Answer: A

NEW QUESTION 180

- (Exam Topic 3)

```
import requests
from requests.auth import HTTPBasicAuth

user= "user"
password= "PASSWORD"

token=requests.post('https://<DNAC ADRESS>/dna/system/api/v1/auth/token',
[ ])
```

Refer to the exhibit. A developer must use a token to collect data from Cisco DNA Center API and prepares a Python script to send requests. Which line of code needs to be placed on the snippet where the code is missing to obtain a token from the Cisco DNA Center API?

- A. token=BasicAuth('user','password'))
- B. auth=BasicAuth('user','password'))
- C. auth=HTTPBasicAuth(user,password))

D. token=HTTPBasicAuth(user,password))

Answer: C

NEW QUESTION 184

- (Exam Topic 3)

Refer to the exhibit.

```
module ietf-interface {
  namespace "urn:ietf:params:xml:ns:yang:ietf-interfaces";
  prefix if;
  import ietf-yang-types {
    prefix yang;
  }
  container interfaces-state {
    list interface {
      key "name";
      leaf name {
        type string;
      }
      leaf admin-status {
        type enumeration {
          enum up {
            value 1;
          }
          enum down {
            value 2;
          }
          enum testing {
            value 3;
          }
        }
      }
      leaf if-index {
        type int32 {
          range "1..2147483647"
        }
      }
      container statistics {
        leaf in-octets {
          type yang:counter64;
        }
        leaf in-unicast-pkts {
          type yang:counter64;
        }
      }
    }
  }
}
```

Which XML snippet has interface information that conforms to the YANG model?

A. Text Description automatically generatedB.

```
<interfaces-state
xmlns="urn:ietf:params:xml:ns:yang:ietf-interfaces"
xmlns:if="urn:ietf:params:xml:ns:yang:ietf-interfaces">
  <interface name="GigabitEthernet1">
    <admin-status>1</admin-status>
    <if-index>1</if-index>
    <statistics>
      <in-octets>408164820</in-octets>
      <in-unicast-pkts>728061</in-unicast-pkts>
    </statistics>
  </interface>
</interfaces-state>
```

Text

Description automatically generated


```
<interfaces-state
xmlns="urn:ietf:params:xml:ns:yang:ietf-interfaces"
xmlns:if="urn:ietf:params:xml:ns:yang:ietf-interfaces">
  <interface>
    <name>GigabitEthernet1</name>
    <admin-status>up</admin-status>
    <if-index>1</if-index>
    <in-octets>408164820</in-octets>
    <in-unicast-pkts>728061</in-unicast-pkts>
  </interface>
</interfaces-state>
```

B. Text Description automatically generated

```
<interfaces-state
xmlns="urn:ietf:params:xml:ns:yang:ietf-interfaces"
xmlns:if="urn:ietf:params:xml:ns:yang:ietf-interfaces">
  <interface>
    <name>GigabitEthernet1</name>
    <admin-status>up</admin-status>
    <if-index>1</if-index>
    <statistics>
      <in-octets>408164820</in-octets>
      <in-unicast-pkts>728061</in-unicast-pkts>
    </statistics>
  </interface>
</interfaces-state>
```

C. Text Description automatically generated

```
<interfaces-state
xmlns="urn:ietf:params:xml:ns:yang:ietf-interfaces"
xmlns:if="urn:ietf:params:xml:ns:yang:ietf-interfaces">
  <interface>
    <name>GigabitEthernet1</name>
    <admin-status>1</admin-status>>
    <if-index>1</if-index>
    <statistics>
      <in-octets>408164820</in-octets>
      <in-unicast-pkts>728061</in-unicast-pkts>
    </statistics>
  </interface>
</interfaces-state>
```

Answer: C

Explanation:

<https://datatracker.ietf.org/doc/id/draft-ietf-netmod-interfaces-cfg-01.txt> <admin-status>up</admin-status>

NEW QUESTION 187

- (Exam Topic 3)

Refer to the exhibit.

HTTP Request

```
curl http://hello-api.info -v
```

HTTP Response

```
* Trying hello-app.info...
* TCP_NODELAY set
* Connected to hello-app.info (hello-app.info) port 80 (#0)
> GET / HTTP/1.1
> Host:hello-app.info
> User-Agent: curl/7.64.1
> Accept: */*
>

< HTTP/1.1 502 Bad Gateway
< Server: nginx/1.14.0 (Ubuntu)
< Date: Sat, 21 Nov 2020 11:09:54 GMT
< Content-Type: text/html
< Content-Length: 182
< Connection: keep-alive
```

A developer cannot reach the web application behind an NGINX load balancer. The developer sends a request to an application FQDN with cURL but gets an HTTP 502 response. Which action solves the problem?

- A. Fix errors in the server configuration, which is behind the load balancer.
- B. Bring up the load balancer to the active state.
- C. Fix errors in the cURL request sent by the client.
- D. Change the default gateway on the load balancer to an active one.

Answer: A

Explanation:

The HyperText Transfer Protocol (HTTP) 502 Bad Gateway server error response code indicates that the server, while acting as a gateway or proxy, received an invalid response from the upstream server.

<https://developer.mozilla.org/en-US/docs/Web/HTTP/Status/502#:~:text=The%20HyperText%20Transfer%20P>

NEW QUESTION 190

- (Exam Topic 2)

Which configuration management tool has an agentless capability?

- A. Chef
- B. Puppet
- C. Ansible
- D. CFEngine

Answer: C

NEW QUESTION 195

- (Exam Topic 2)

Refer to the exhibit.

API Documentation:

Integrations are how you request permission to invoke the Webex REST API on behalf of another Webex Teams user. To do this in a secure way the API supports the OAuth 2 standard which allows third-party integrations to get a temporary access token for authenticating API calls instead of asking users for their password.

Script:

```
01 import requests
02
03 base_url = "https://webexapis.com/v1"
04 header = {"Key": "Value"}
05
06 url = "{}/{}/".format(base_url, "/teams")
07 print(requests.get(url, headers=header).status_code)
```

A developer creates a Python script that queries Cisco Webex. When the script is executed, a 401 code is returned. After troubleshooting, the developer discovers that the service is missing privileges. Which change to the header in line 4 of the script results in the code 200?

A)

```
header = {"Authentication": "Bearer YOUR_TOKEN"}
```

B)

```
header = {"Authentication Bearer" : "YOUR_TOKEN"}
```

C)

```
header = {"Authorization" : "Bearer YOUR_TOKEN"}
```

D)

```
header = {"Authorization Bearer" : "YOUR_TOKEN"}
```

- A. Option A
- B. Option B
- C. Option C
- D. Option D

Answer: C

NEW QUESTION 197

- (Exam Topic 2)

Drag and drop the code snippets from the bottom to the blanks in the code to test the API response through the Python unittest library. Not all options are used.

```
import unittest
import json
from apidogs import app

class TestsAPIDogs(unittest.TestCase):

    def setUp(self):
        self.app = app.test_client()

    # Check status response of API
    def test_status(self):
        resp =self.app.get('/dogs/all')
        status_code = response.
        self.assertEqual(status_code, )

    # Check for content type is in application/json
    def test_content_type(self):
        resp =self.app.get('/dogs/all')
        self.assertEqual(resp. , 'application/json')

    def test_item_not_exist(self):
        resp =self.app.get('/dogs?id= ')
        self.assertEqual(response.status code,404)
```

none

content

status_code

200

content_type

403

status

- A. Mastered
- B. Not Mastered

Answer: A

Explanation:

Graphical user interface, text Description automatically generated

NEW QUESTION 202

- (Exam Topic 2)

What is a capability of an agentless configuration management system?

- A. It requires managed hosts to have an interpreter for a high-level language such as Python or Ruby.
- B. It requires managed hosts to connect to a centralized host to receive updated configurations.
- C. It uses compiled languages as the basis of the domain-specific language to interface with managed hosts.
- D. It uses existing protocols to interface with the managed host.

Answer: D

NEW QUESTION 207

- (Exam Topic 2)

Which application should be used to externally access all applications deployed in the same host machine with a single public IP address and port, when each application listens on different local ports?

- A. reverse proxy
- B. load balancer

- C. DNS
- D. firewall

Answer: D

NEW QUESTION 210

- (Exam Topic 2)

A developer needs a list of clients connected to a specific device in a Meraki network. After making a REST API call, the developer receives an unfamiliar response code. Which Cisco DevNet resource should be used to identify the meaning of the response code?

- A. API documentation
- B. Sandbox
- C. Learning Labs
- D. Code Exchange

Answer: A

NEW QUESTION 212

- (Exam Topic 2)

Devices

Get Device Count

Operation Id: `getDeviceCount`

Description: Returns the count of network devices based on the filter criteria by management IP address, mac address, hostname and location name

GET

/dna/intent/api/v1/network-device/count

Request Parameters

Responses

Status: 200

The request was successful. The result is contained in the response body.

Schema Definition

Example Body

[-]

CountResult

response: integer

version: string

+ -

Refer to the exhibit. Drag and drop the code snippets from the bottom onto the blanks in the code to construct a request to find the Cisco DNA Center switch count. Not all options are used.

```
curl -L --request  \
--  https:///dna/intent/api/v1/network-device/  \
--header '  : application/json' \
--header 'Accept: application/json'
```

| | | |
|------|---------|--------------|
| url | network | count |
| POST | GET | Content-Type |

- A. Mastered
- B. Not Mastered

Answer: A

Explanation:


```
curl -L --request GET \
--url https://dna/intent/api/v1/network-device/ count \
--header 'Content-Type: application/json' \
--header 'Accept: application/json'
```

| | | |
|------|---------|--------------|
| url | network | count |
| POST | GET | Content-Type |

NEW QUESTION 216

- (Exam Topic 2)

Which protocol runs over TCP port 23?

- A. SSH
- B. NETCONF
- C. HTTP
- D. Telnet

Answer: D

NEW QUESTION 218

- (Exam Topic 2)

What is a capability of the NETCONF protocol?

- A. allows Python scripts to be executed externally from a network device
- B. uses JSON to encode data in its content layer
- C. allows XML messages to be exchanged via the SSH protocol
- D. exposes a web-based interface

Answer: C

NEW QUESTION 222

- (Exam Topic 2)

What are two functions of a routing table on a network device? (Choose two.)

- A. It lists entries more than two hops away.
- B. It lists the routes to a particular destination.
- C. It lists the routes to drop traffic.
- D. It lists hosts that are one hop away.
- E. It lists the static and dynamic entries.

Answer: BE

NEW QUESTION 224

- (Exam Topic 2)

Refer to the exhibit.

API v1 documentation:

Authentication and authorization: Bearer Token

Inventory endpoint: /api/v1/inventory

Method: GET

Response formats: text/html, application/json, application/html

Token:

dXNlcm5hbWU6cGFzc3dvcmQ=

Api call:

GET /api/v1/inventory HTTP/1.1

Host: example.com

Response:

HTTP/1.1 401 Unauthorized

An API call is constructed to retrieve the inventory in XML format by using the API. The response to the call is 401 Unauthorized. Which two headers must be

added to the API call? (Choose two.)

- ☐ Accept: application/xml
- ☐ Content-Type: application/xml
- ☐ Authentication: Bearer dXN1cm5hbWU6cGFzc3dvcmQ=
- ☐ Bearer-Token: dXN1cm5hbWU6cGFzc3dvcmQ=
- ☐ Authorization: Bearer dXN1cm5hbWU6cGFzc3dvcmQ=

- A. Option A
- B. Option B
- C. Option C
- D. Option D
- E. Option E

Answer: BE

NEW QUESTION 226

- (Exam Topic 2)

Refer to the exhibit.

```
import requests
from requests.auth import HTTPBasicAuth
from dnac_config import DNAC, DNAC_PORT, DNAC_USER, DNAC_PASSWORD

def get_auth_token():
    url = 'https://sandboxdnac.cisco.com/dna/system/api/v1/auth/token'
    # API Endpoint: requires POST method
    [redacted]

def get_device_list():
    """
    Building out function to retrieve list of devices. Using requests.get to make a call
    to the network de-vice Endpoint
    """
    token = get_auth_token() # Get Token
    url = 'https://sandboxdnac.cisco.com/api/v1/network-device'
    hdr = {'x-auth-token': token, 'content-type' : 'application/json'}
    resp = requests.get(url, headers=hdr)
    device_list = resp.json()
    print_device_list(device_list)

if __name__ == "__main__":
    get_device_list()
```

A developer creates a script to obtain a list of devices by using the Cisco DNA Center API. The remote server authorizes the request only if an authentication token is supplied in the headers. A function named get_auth_token() must retrieve a valid token by using HTTP Basic Authentication. Which code must be added to complete the get_auth_token() function?

- A. resp = requests.post(url, auth=HTTPBasicAuth(DNAC_USER, DNAC_PASSWORD)) token = resp.json()['Token']return token
- B. resp = requests.post(url, auth=(DNAC_USER, DNAC_PASSWORD)) token = resp.json ()['Token']return token
- C. resp = http.post(url, auth=HTTPBasicAuth(DNAC_USER, DNAC_PASSWORD)) token = resp.json()['Token']return token
- D. resp = http.post(url, auth=(DNAC_USER, DNAC_PASSWORD)) token = resp.json()['Token']return token

Answer: A

NEW QUESTION 230

- (Exam Topic 2)

What is the purpose of a MAC address on a network device?

- A. unique network address that identifies the network interface of a device
- B. unique network interlace address that is provided by the DHCP server
- C. unique hardware address that identifies the network interface of a device
- D. unique hardware interface address that is provided by the central switch

Answer: C

NEW QUESTION 234

- (Exam Topic 2)

A developer is trying to retrieve data over a REST API. The API server responds with an HTTP client error response code. After investigating the response the developer realizes the response has a Retry-After header. What is the root cause of this error?

- A. The REST service is unreachable at the time of the REST request
- B. Too many requests were sent to the REST service in a given amount of time.
- C. An appliance limited the rate of requests to the transport layer.
- D. An appliance limited the rate of requests to the application layer

Answer: B

NEW QUESTION 235

- (Exam Topic 2)

A developer creates a web application that receives a username and password and uses them to sync the credentials to other services through HTTPS. API keys to services are part of the configuration files of the application, but the credentials to the database that stores the synchronization logs are obtained through an external vault service. What is the security issue in this scenario?

- A. Communication between the application and the services is not encrypted.
- B. The database credentials should be stored in the configuration files so that they are secured on the same server.
- C. The API keys are stored in the configuration files but should be stored in the vault service.
- D. The synchronization logs should be encrypted and not stored in a relational database.

Answer: A

NEW QUESTION 240

- (Exam Topic 2)

Refer to the exhibit.

SDK Documentation:

Class: Devices

```
Device List: get_device_list()
Get device: get_device_by_id(id)
Delete device: delete_device_by_id(id)
Device status: inventoryStatusDetail
Device Parameters:
    id
    upTime
    type
```

A Python script must delete all Cisco Catalyst 9300 Series switches that have an uptime that is greater than 90 days The script must also query for the status of all the other devices Drag and drop the code from the bottom onto the bottom box the code is missing to complete the script Not at options are used

Answer Area

```
from dnacentersdk import DNACenterAPI

device_type = "Cisco Catalyst 9300 Switch"
api_session = DNACenterAPI(
    base_url="https://sandboxdnac.cisco.com",
    username="user",password="password"
)
```

```
devices = 
```

```
for device in devices:
    if int(device.upTime.split()[0]) > 90:
        if device.type == device type:
            output = 
            print(output)
```

```
else:
    selected device = 
    output = 
    print (output)
```

- ☐ selected_device.response.inventoryStatusDetail(device)
- ☐ api_session.devices.delete_device_by_id(device.id)
- ☐ api_session.devices.get_device_by_id(device.id)
- ☐ selected_device.response.inventoryStatusDetail
- ☐ api_session.devices.get_device_list().response

- A. Mastered
- B. Not Mastered

Answer: A

Explanation:

Table Description automatically generated

NEW QUESTION 241

- (Exam Topic 2)

What is a benefit of test-driven development?

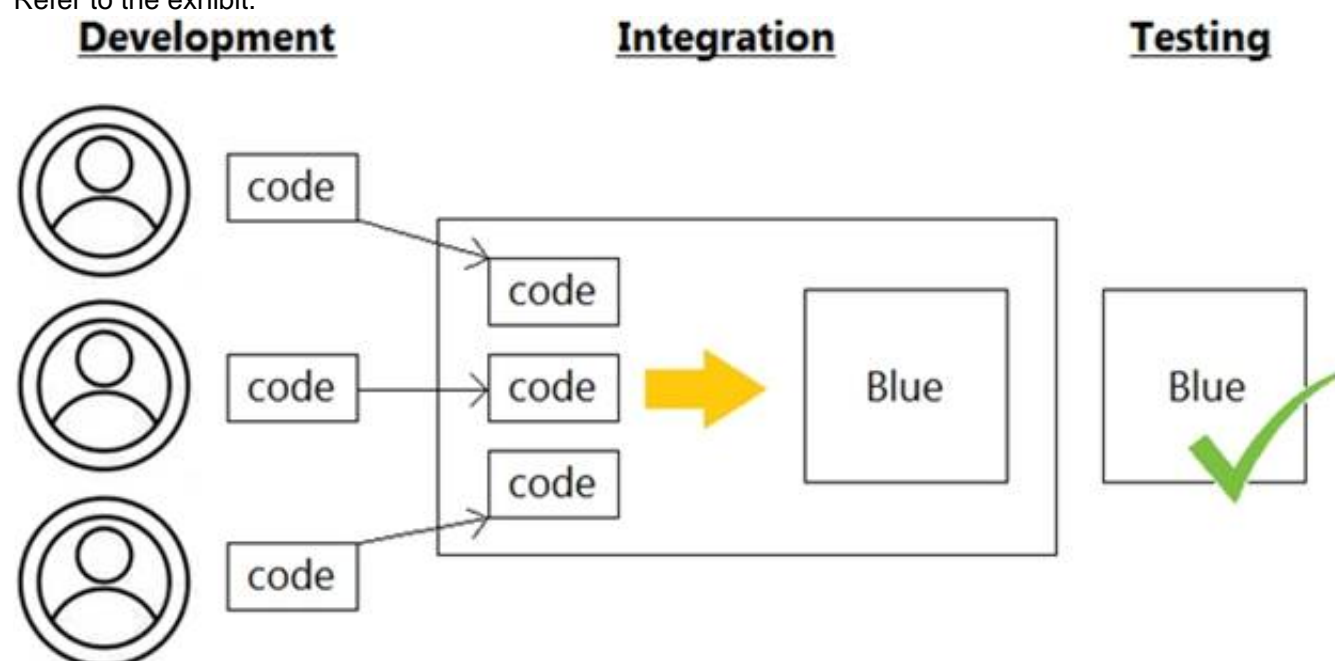
- A. early customer involvement
- B. increased code quality
- C. faster releases that have minimal features
- D. strict adherence to product requirements

Answer: D

NEW QUESTION 243

- (Exam Topic 2)

Refer to the exhibit.



Which infrastructure automation method is shown?

- A. Waterfall
- B. CI/CD pipeline
- C. Agile
- D. Lean

Answer: C

NEW QUESTION 247

- (Exam Topic 2)

How do XML and JSON compare regarding functionality?

- A. JSON natively supports arrays and XML does not natively support arrays.
- B. XML provides support for mapping data structures into host languages than JSON.
- C. XML provides more human readability than JSON.
- D. JSON provides support for data types than XML.

Answer: A

NEW QUESTION 248

- (Exam Topic 2)

```
GET getNetworkHttpServers
https://api.meraki.com/api/v0/networks/:networkId/httpServers
List the HTTP servers for a network

AUTHORIZATION
API Key

This request is using an authorization helper from collection Meraki Dashboard
API
HEADERS
Accept
*/*
```

Refer to the exhibit. A developer is creating a Python script to obtain a list of HTTP servers on a network named office_east by using the Cisco Meraki API. The request has these requirements:

- Must time out if the response is not received within 2 seconds.

- Must utilize client certificates and SSL certificate verification.
- Must utilize basic authentication that uses a username of admin and a password of cisco.
- Must save the response to an object named response.

Drag and drop the code snippets from the bottom onto the blanks in the code to meet the requirements. Not all options are used.

```
import requests
from requests.auth import HTTPBasicAuth
network = 'office east'
url = 'https://api.meraki.com/api/v0/networks/{}/httpServers'.format (network)
[ ] = requests.get(url=url, headers={ 'Accept': '*/*'},
verify='/etc/pki/tls/certs/ca.pem',
timeout= [ ] ,
[ ] =('/etc/pki/tls/certs/client.pem',
'/etc/pki/tls/certs/client.key'),
auth= [ ] ('admin', 'cisco'))
response.status_code
```

| | | |
|---------------|---------------|------|
| token | response | 2 |
| HTTPTokenAuth | HTTPBasicAuth | cert |

- A. Mastered
 B. Not Mastered

Answer: A

Explanation:

Text Description automatically generated

Reference:

<https://community.cisco.com/t5/networking-blogs/authenticating-rest-api-calls-to-dnac-getting-started/ba-p/3658>

NEW QUESTION 253

- (Exam Topic 2)

What is the purpose of the first three pairs of digits in a MAC address?

- A. defines a routing identifier for the client
- B. indicates the IP address of the client in Hex
- C. defines packet forwarding priority sent or received by the adapter
- D. indicates vendor of the network card or adapter

Answer: D

NEW QUESTION 256

- (Exam Topic 2)

What are two benefits of model-driven programmability?

- A. model-driven APIs for abstraction and simplification
- B. single choice of transport, protocol, and encoding
- C. model-based, structured, and human friendly
- D. easier to design, deploy, and manage APIs
- E. models decoupled from transport, protocol, and encoding

Answer: DE

NEW QUESTION 260

- (Exam Topic 2)

What are two use cause where webhooks are effective? (Choose two.)

- A. Close a session with a web server after a specific amount of time.
- B. Filter out information from a response to an API call
- C. Change the response format or content type of an API call.
- D. Inform a previously defined chat channel after a deployment fate.
- E. Send an email to a customer of an online store after payment is complete

Answer: DE

NEW QUESTION 265

- (Exam Topic 2)

A developer is creating a script to interact with a REST API service which requires basic authentication. The credentials are "devnet:391665405" and the Base64 encoding of the credentials is "GV2bmV0dXNlcjDaXNj=". Which payload and header combination must be used for authentication?

- A.
- ```
payload = {
 'Authorization' : 'Basic GV2bmV0dXNlcjpDaXNj=',
 'Content-Type' : 'application/json'
}
headers= {}
```
- B.
- ```
payload = {}
headers= {
    'Authorization' : 'Basic GV2bmV0dXNlcjpDaXNj=',
    'Content-Type' : 'application/json'
}
```
- C.
- ```
payload = {
 'Authorization' : 'Bearer GV2bmV0dXNlcjpDaXNj=',
 'Content-Type' : 'application/json'
}
headers= {}
```
- D.
- ```
payload = {}
headers= {
    'Authorization' : 'Bearer GV2bmV0dXNlcjpDaXNj=',
    'Content-Type' : 'application/json'
}
```

- A. Option A
 B. Option B
 C. Option C
 D. Option D

Answer: B

Explanation:

<https://developer.cisco.com/docs/epnm/#!how-to-authenticate/authorization>

NEW QUESTION 266

- (Exam Topic 2)

Drag and drop the code from the bottom onto the box where the code is missing in the Bash script to complete the missing assignment.

```
#!/bin/bash

= 'date +%b-%d-%y'

= /home/usr/path/backup-$BACKUPTIME.tar.gz

= /home/usr/path/data_folder

tar -cpzf $DESTINATION $SOURCEFOLDER
```

BACKUPTIME

SOURCEFOLDER

DESTINATION

- A. Mastered
 B. Not Mastered

Answer: A

Explanation:

```
#!/bin/bash

BACKUPTIME    = `date +%b-%d-%y`
DESTINATION   = /home/usr/path/backup-$BACKUPTIME.tar.gz
SOURCEFOLDER  = /home/usr/path/data_folder

tar -cpzf $DESTINATION $SOURCEFOLDER
```

BACKUPTIME

SOURCEFOLDER

DESTINATION

NEW QUESTION 269

- (Exam Topic 2)

Refer to the exhibit.

```
user_manager.py
1  import psycopg2
2  import json, sys
3
4  # Load config file
5  config = None
6  with open('config.json') as config_file:
7      config = json.load(config_file)
8  if not config:
9      print("Error loading configuration file.")
10     sys.exit(1)
11
12  connection = psycopg2.connect(
13      database="users",
14      host=config["DB_USER"], user=config["DB_USER"], password=config["DB_PWD"]
15  )
16  connection.set_session()
17
18  def has_admin_role(username):
19      with connection.cursor() as cursor:
20          query = 'SELECT admin_role FROM users WHERE username = {0}'
21          cursor.execute(query.format(username))
22          result = cursor.fetchone()
23          return result
24
25  has_admin_role("ops.shared")

config.json
1  {
2      "DB_USER": "pguser",
3      "DB_PWD": "@123Qwer%4",
4      "DB_HOST": "devnetdb.example.com"
5  }
```

An engineer must check the admin rights of users on a database regularly and prepares the Python script to automate the process. The script connects to the database and runs a query. What is a security issue about the secrets in the code that relates to secret protection?

- A. They must be stored in configuration files if there is a possibility of leakage.
- B. They must be Base64-encoded if stored in the user database.
- C. They must be encrypted if stored in the user database.
- D. They must be stored in configuration files if no authentication will be used.

Answer: D

NEW QUESTION 270

- (Exam Topic 2)

In the test-driven development model, what is changed after a test fails?

- A. test
- B. schedule
- C. project requirements
- D. code

Answer: D

Explanation:

Reference:

<https://www.guru99.com/test-driven-development.html#:~:text=In%20simple%20terms%2C%20test%20cases,c>

NEW QUESTION 271

- (Exam Topic 2)

Refer to the exhibit.

```
# base image
FROM alpine

# Install python and pip
RUN apk add --update py2-pip

# Install python modules needed by the python app
COPY requirements.txt /usr/src/app/
RUN pip install --no-cache-dir -r /usr/src/app/requirements.txt

#copy local files for the app to run
COPY app.py /usr/src/app/
COPY templates/index.html /usr/src/app/templates/

EXPOSE 8080

#run the application
CMD ["python", "/usr/src/app/app.py"]
```

Which function does the EXPOSE line perform when building an image from this Dockerfile?

- A. Local port 8080 of the container that launched with this docker image is accessible from co-hosted containers and external clients.
- B. Local port 8080 is not reachable at all because no IP address is specified along with the EXPOSE command of the Dockerfile.
- C. Local port 8080 is accessible from other containers running on the same docker host as the container that launched with this docker image.
- D. Local port 8080 of the container that launched with this docker image is accessible to external clients.

Answer: C

Explanation:

By default, the EXPOSE instruction does not expose the container's ports to be accessible from the host. In other words, it only makes the stated ports available for inter-container interaction.

Whereas publishing a port using either -P or -p exposes it, exposing a port using EXPOSE or --expose does not publish it.

So, while exposed ports can only be accessed internally, published ports can be accessible by external containers and services.

<https://www.whitesourcesoftware.com/free-developer-tools/blog/docker-expose-port/>

NEW QUESTION 273

- (Exam Topic 2)

A developer creates a script that configured multiple Cisco IOS XE devices in a corporate infrastructure. The internal test environment is unavailable, and no maintenance window is available to test on a low-priority production environment. Which resource is used to test the code before it is applied to the production environment?

- A. Code Exchange
- B. Cisco DevNet Learning Labs
- C. Cisco DevNet Sandbox
- D. Cisco Support

Answer: C

Explanation:

Reference: <https://developer.cisco.com/site/sandbox/>

NEW QUESTION 278

- (Exam Topic 2)

Which tool is used to block all traffic to the domain by using a single API call?

- A. Cisco ISE
- B. Cisco Firepower
- C. Cisco AMP
- D. Cisco Umbrella

Answer: B

NEW QUESTION 281

- (Exam Topic 2)

Drag and drop the code snippets from the bottom to the blanks in the code to complete the HTTP response. Not all options are used.

Request URL: <http://www.example.com/>

: GET

: 200 OK

Remote Address: [2606:2800:220:1:248:1893:25c8:1946]:80

Referrer Policy: strict-origin-when-cross-origin

Response Headersview source

Accept-Ranges: bytes

Age: 396561

Cache-Control: max-age=604800

: gzip

Content-Length: 648

: text/html; charset=UTF-8

Date: Sat, 20 Nov 2020 20:49:34 GMT

Etag: "3147526947+ident"

Expires: Sat, 21 Nov 2020 20:49:34 GMT

Last-Modified: Thu, 17 Oct 2019 07:18:26 GMT

Server: ECS (dna/63AA)

Vary: Accept-Encoding

X-Cache: HIT

Request Headersview source

Accept: text/html,application/xhtml+xml,application/xml;q=0.9, image/avif,image/webp,image/apng,*/*;q=0.8,application/signed-exchange;v=b3;q=0.9

Accept-Encoding: gzip, deflate

Accept-Language: en-US,en;q=0.9

| | |
|------------------|-----------------|
| Request Type | Request Control |
| Status Code | Content-Type |
| Request Method | Content Code |
| Content-Encoding | |

- A. Mastered
 B. Not Mastered

Answer: A

Explanation:

Graphical user interface, text, application Description automatically generated

NEW QUESTION 285

- (Exam Topic 2)

How does a synchronous API request differ from an asynchronous API request?

- A. clients receive responses with a task id for further processing
 B. clients subscribe to a webhook for operation results
 C. clients are able to access the results immediately
 D. clients poll for the status of the execution of operations

Answer: C

NEW QUESTION 288

- (Exam Topic 2)

Refer to the exhibit.

List Messages

Lists all messages in a room. Each message will include content attachments if present.

The list sorts the messages in descending order by creation date.

Long result sets will be split into pages.

GET /v1/messages

Query Parameters

roomId
string Required
List messages in a room, by ID.

parentId
string
List messages with a parent, by ID.

Try itExample

RequestResponse

```
https://webexapis.com/v1/messages?roomId=Y2lzY29zcGFyazovL3VzL1JPT00vYmJjZWl0YXQtdNDNmMS0zYjU4LTkxNDctZjE0YmIwYzRkMTU0&parentId=Y2lzY29zcGFyazovL3VzL01FU1NBR0UvZW11ZTl0ZjAtN2RhMS0xMWU5LTg2NTgtZTkzYzNiODZjZmFm&mentionedPeople=Y2lzY29zcGFyazovL3VzL1BFT1BMRS8yNDlmNzRkOS1kYjhhLTQxY2EtODk2Yi04NzllZDI0MGFjNTM&before=2016-04-21T19:01:55.966Z&beforeMessage=Y2lzY29zcGFyazovL3VzL01FU1NBR0UvOTJkYjNiZTAiNDNiZC0xMWU2LTlhZTkzZGQ1YjNkZmM1NjVj&max=100
```

A developer needs to automatically retrieve all of the messages of a Webex room with the roomId of HY2l2Y292cGFyazovL3Vz397748444YjU5NjAtNTk0Zj0xMWVhLTk0Mj". Using the Webex API documentation shown, drag and drop the code snippets from below onto the code to complete the Python script to list all of the messages in the room. Not all options are used.

```
import requests

webex_token = "NDA2OGV...f0-4434-a696-84fee4047e0a"

room_id = "Y2l2Y292cGF...jU5NjAtNTk0Zi0xMWVhLTk0Mj"

url = "https://webexapis.com/v1/" + " " + " = " + " "

payload = {}
headers = {
    'Authorization': 'Bearer ' + " "
}

response = requests.request("GET", url, headers=headers, data = payload)

print(response.text.encode('utf8'))
```

webex_tokenroomroom_id

messages?roomIdmessages

- A. Mastered
- B. Not Mastered

Answer: A

Explanation: Graphical user interface Description automatically generated with medium confidence

NEW QUESTION 291
- (Exam Topic 2)
What are two benefits of using VLANs? (Choose two.)

- A. limits the devices that can join the network
- B. segments the broadcast domain
- C. extends the broadcast domain
- D. allows all network devices to be accessible from any host on the network
- E. enables the logical grouping of devices that belong to different Layer 2 devices

Answer: BE

NEW QUESTION 296
- (Exam Topic 2)

class Native.Interface.FastEthernet

Bases: Entity

Class Hierarchy: Native Interface FastEthernet

This class represents configuration data.

FastEthernet IEEE 802.3

name(key)

type: str

pattern: ([0-9]/)([0-9]/)([1-3][0-9][4[0-8]]([0-9])\[0-9]+)?

description

Interface specific description

type: str

pattern: *

flowcontrol

Configure flow operation

type: Flowcontrol

isis

IS-IS commands

type: Isis

keepalive

Enable keepalive

type: bool

keepalive_settings

type: KeepaliveSettings

Refer to the exhibit. Drag and drop the code snippets from the bottom to the blanks in the code to enable keepalive for the FastEthernet 2/0 interface. Not all options are used.

```

from ydk.services import CRUDService
from ydk.providers import NetconfServiceProvider as nc
from ydk.models.cisco_ios_xe import Cisco IOS XE native as model
ip = '10.10.20.48'
prtc1 = 'ssh'
user = 'developer'
psw = 'P@s$W0rD'
port = 830
provider = nc(address=ip, port=port, username=user, password=psw, protocol=prtc1)
crud = CRUDService()

interface.name = '2/0'

if interface data:
    print('Keepalive is enabled.')
else:
    print('Keepalive is not enabled.')

```

interface_data = crud.update(provider, interface)

interface.keepalive = True

interface_data = crud.read(provider, interface)

interface = model.Native.Interface.FastEthernet()

interface.FastEthernet.keepalive_settings.keepalive = True

interface = model.Native.Interface()

- A. Mastered
 B. Not Mastered

Answer: A

Explanation:

```
from ydk.services import CRUDService
from ydk.providers import NetconfServiceProvider as nc
from ydk.models.cisco ios xe import Cisco IOS XE native as model
ip = '10.10.20.48'
prtc1 = 'ssh'
user = 'developer'
psw = 'P@s$W0rD'
port = 830
provider = nc(address=ip, port=port, username=user, password=psw, protocol=prtc1)
crud = CRUDService()

interface = model.Native.Interface.FastEthernet()
interface.name = '2/0'

interface.keepalive = True

interface_data = crud.read(provider, interface)

if interface_data:
    print('Keepalive is enabled.')
else:
    print('Keepalive is not enabled.')
```

```
interface_data = crud.update(provider, interface)
```

```
interface.FastEthernet.keepalive_settings.keepalive = True
```

```
interface = model.Native.Interface()
```

NEW QUESTION 298

- (Exam Topic 2)

Why is refactoring done during test-driven development?

- A. to enable larger objects and longer methods
- B. to improve maintainability and readability
- C. to ensure that the previous uses of the objects are explained
- D. to ensure the duplication of essential code

Answer: B

NEW QUESTION 303

- (Exam Topic 2)

Refer to the exhibit.

```
FROM nginx

ARG DELAY="30"
ENV INITIAL_DELAY=${DELAY}

ENTRYPOINT ["/bin/sh"]

CMD ["-c", "/bin/sleep ${INITIAL_DELAY} && nginx -g 'daemon off;']
```

Which command, including arguments, is executed when the container starts?

- A. /bin/sh -c "/bin/sleep 30 && nginx -g 'daemon off;'"
- B. /bin/sh -c "/bin/sleep 10 && nginx -g 'daemon off;'"
- C. /bin/bash -c "/bin/sleep 30 && nginx -g 'daemon off;'"
- D. /bin/sh -c "/bin/sleep 30" && nginx -g 'daemon off;'

Answer: A

NEW QUESTION 307

- (Exam Topic 2)

Which HTTP response status code means "Forbidden"?

- A. 500
- B. 401
- C. 403
- D. 502

Answer: C

Explanation:

Reference: <https://developer.mozilla.org/en-US/docs/Web/HTTP/Status/403>

NEW QUESTION 310

- (Exam Topic 2)

Refer to the exhibit.

```
>>> response_data = requests.get(base_url + request_url, cookies=cookies)
Traceback (most recent call last):
  File "<stdin>", line 1, in <module>
NameError: name 'requests' is not defined
>>>
```

A Python code has been written to query a device. The executed code results in the error shown. Which action resolves the problem?

- A. import json
- B. requests("GET", base_url + request_url, cookies=cookies)
- C. pip install requests
- D. import requests

Answer: D

NEW QUESTION 315

- (Exam Topic 2)

What is used in JSON to represent a Python Tuple?

- A. Object
- B. Array
- C. Dict
- D. Collection

Answer: B

NEW QUESTION 317

- (Exam Topic 2)

How are load balancers used in modern application deployment?

- A. Allow traffic to continue as new compute units are brought up and old compute units are taken down.
- B. Allow http and https traffic to continue as old compute units are discontinued before new units are brought up.
- C. Turn off traffic and take down compute units, then update and bring the compute units back up.
- D. Bring up new compute units, test the compute units, and switch the traffic from old units to new units.

Answer: D

NEW QUESTION 318

- (Exam Topic 2)

What is a difference between a synchronous API and an asynchronous API?

- A. An asynchronous API can make offline calls while synchronous APIs do not have this capability.
- B. Synchronous API calls are returned immediately while asynchronous calls do not guarantee an immediate response.
- C. Synchronous API calls require an authentication header to be sent while asynchronous calls do not require authentication.
- D. An asynchronous API can make a larger number of calls in a specified time period than a synchronous API.

Answer: B

Explanation:

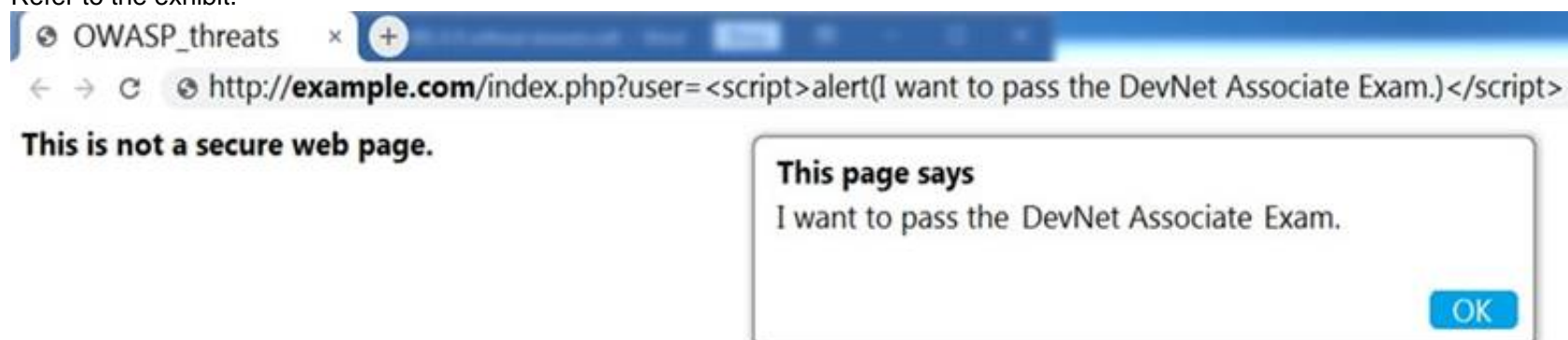
Reference:

<https://stackoverflow.com/questions/36213948/what-is-the-difference-between-asynchronous-calls-and-callback>

NEW QUESTION 322

- (Exam Topic 2)

Refer to the exhibit.



OWASP threat does this example demonstrate?

- A. Broken access control
- B. SQL injection

- C. Man-in-the-middle
- D. Cross-site-scripting

Answer: D

NEW QUESTION 326

- (Exam Topic 2)

Refer to the exhibit.

```

module ietf-ip {
  namespace "urn:ietf:params:xml:ns:yang:ietf-ip";
  prefix ip;
  import ietf-interfaces {
    prefix if;
  }
  augment "/if:interfaces/if:interface" {
    container ipv4 {
      leaf enabled {
        type boolean;
        default true;
      }
      list address {
        key "ip";
        leaf ip {
          type inet:ipv4-address-no-zone;
        }
        choice subnet {
          mandatory true;
          leaf prefix-length {
            type uint8 {
              range "0..32";
            }
          }
          leaf netmask {
            type yang:dotted-quad;
          }
        }
      }
    }
  }
}

module ietf-interfaces {
  namespace "urn:ietf:params:xml:ns:yang:ietf-interfaces";
  prefix if;
  typedef interface-ref {
    type leafref {
      path "/if:interfaces/if:interface/if:name";
    }
  }
  container interfaces {
    list interface {
      key "name";
      leaf name {
        type string;
      }
      leaf description {
        type string;
      }
      leaf type {
        type identityref {
          base interface-type;
        }
        mandatory true;
      }
      leaf enabled {
        type boolean;
        default "true";
      }
    }
  }
}

```

Which JSON snippet configures a new interface according to YANG model?

A)

```

{"ietf-interfaces:interface": {
  "name": "Loopback100",
  "enabled": true,
  "ietf-ip:ipv4": {
    "address": [
      {
        "ip": "10.255.254.1",
        "netmask": "255.255.255.0"
      }
    ]
  }
}

```

B)

```

{"ietf-interfaces": {
  interface: {
    "name": "Loopback100",
    "enabled": true,
    "ietf-ip": {
      ipv4: {
        "address": [
          {
            "ip": "10.255.254.1",
            "netmask": "255.255.255.0"
          }
        ]
      }
    }
  }
}

```

C)

```

{ "interface" {
  "name": "Loopback100",
  "enabled": true,
  "ipv4": {
    "address": [
      {
        "ip": "10.255.254.1",
        "netmask": "255.255.255.0"
      }
    ]
  }
}

```

D)

```

“ietf-interfaces:interface”: {
  “name”: “Loopback100”,
  “enabled”: true,
  “ietf-ip:ipv4:address”: [
    {
      “ip”: “10.255.254.1”,
      “netmask”: “255.255.255.0”
    } ]
  }
}

```

- A. Option A
- B. Option B
- C. Option C
- D. Option D

Answer: B

NEW QUESTION 328

- (Exam Topic 2)

Refer to the exhibit.

```

$ sh script.sh
Traceback (most recent call last):
  File "script.py", line 2, in <module>
    api = WebexTeamsAPI()
  File "/opt/.venv/pyvenv35/lib/python3.5/site-packages/webexteamssdk/api/__init__.py", line 112,
in __init__
    "You must provide a Webex Teams access token to interact with "
webexteamssdk.exceptions.AccessTokenError: You must provide a Webex Teams access token to interact
with the Webex Teams APIs, either via a WEBEX_TEAMS_ACCESS_TOKEN environment variable or via the
access_token argument.
$
$
$ cat script.sh
#!/bin/bash

python script.py
$

```

Which line must be included in the Bash script for the Python code to succeed?

- A. define WEBEX_TEAMS_ACCESS_TOKEN=your_access_token_here
- B. export WEBEX_TEAMS_ACCESS_TOKEN=your_access_token_here
- C. set WEBEX_TEAMS_ACCESS_TOKEN=your_access_token_here
- D. WEBEX_TEAMS_ACCESS_TOKEN=your_access_token_here

Answer: B

NEW QUESTION 330

- (Exam Topic 2)

A file that already exists in a local repository is updated. Which command must be executed to ensure that the changes in the file are included in the next Git commit?

- A. git update
- B. git merge
- C. git add
- D. git rebase

Answer: A

NEW QUESTION 334

- (Exam Topic 2)

What are two key capabilities of Cisco Finesse? (Choose two.)

- A. Finesse includes an RPC API that enables the development of custom gadgets.
- B. Agents access Finesse from a browser without needing to install or configure anything on the client machine.
- C. Finesse automatically collects telemetry data
- D. An OpenDNS utility is preconfigured and ready to use on Finesse.
- E. Gadget containers provide a seamless experience in a single user interface.

Answer: BE

NEW QUESTION 339

- (Exam Topic 1)

Fill in the blanks to complete the Python script to update the Webex Teams membership of a room using the Python requests library import requests

```
import requests
url = "https://api.ciscospark.com/v1/memberships/Y2lzY29zcGFya29v371508156INISVAvOTJhM2RkOWEiNjc1ZC00YTQxLTljNDEtMmFiZGY4OWY0NGY0OjExNzJkNmYwLTJlY2MtMTFhOS1iOWI3LWNmMjg3MTJhYTgzNw"

payload = '{"isModerator": true}'
headers = {
    'Authorization': 'Bearer ',
    'Content-Type': 'application/json'
}

response = requests. ( "PATCH" url headers= , data = )
print(response.text.encode('utf8'))
```

- A. Mastered
- B. Not Mastered

Answer: A

Explanation:
request, headers , payload

NEW QUESTION 340
- (Exam Topic 1)
Refer to the exhibit.

List Messages

Lists all messages in a room. Each message will include content attachments if present.

The list sorts the messages in descending order by creation date.

Long result sets will be split into pages.

GET /v1/messages

Query Parameters

roomId

string

Required

List messages in a room, by ID.

mentionedPeople

array

List messages with these people mentioned, by ID.

Use me as a shorthand for the current API user.

before

string

List messages sent before a date and time.

beforeMessage

string

List messages sent before a message, by ID.

max

number

Limit the maximum number of messages in the response.

Default: 50

Try it

Example

GET /v1/messages{?roomId,mentionedPeople,before,beforeMessage}

Header

Authorization

Use personal access token

Bearer

This limited-duration personal access token is hidden for your security.

Query Parameters

roomId

Required

e.g. Y2lzY29zcGFya29vL3VzL1JPT00vYmJj

mentionedPeople

e.g. Y2lzY29zcGFya29vL3VzL1BFT1BMRS6

before

e.g. 2016-04-27Tf:9:01:55:966Z

beforeMessage

e.g. Y2lzY29zcGFya29vL3VzL1FU1NBROL

max

e.g. 100

Run


```
bash-3.2$ curl -H "Content-Type: application/json" -H "Authorization:
Fj2zzzykEa091ic9GK2j8LtE1HklH6oRHPQdw1Pat60i7ndtHHnWzL2b5pqMg14Kk_B9EI59isacLy7-
NarA02n9H-tGgt-SxQ39iDejgcs" -i -X POST -d "{ \"roomId\":
\\\"Y2geK53sjEknosrC7SwQ5ZGL99pHgiuScB7DfNvU8Xx4wDKLiPORcEkryAnM3QmK9LQZsP0G4\\\"
, \\\"text\\\": \\\"test2\\\" }" https://api.ciscospark.com/v1/messages

HTTP/1.1 401 Unauthorized
Via: 1.1 linkerd
TrackingID: ROUTER_5E0FDC8C-EB6F-01BB-00EF-806BF1BD00EF
Date: Sat, 04 Jan 2020 00:30:04 GMT
Server: Redacted
Content-Length: 267
Content-Type: application/json
Strict-Transport-Security: max-age=63072000; includeSubDomains; preload

{"message": "The request requires a valid access token set in the Authorization request
header.", "errors": [{"description": "The request requires a valid access token set in the
Authorization request
header."}], "trackingId": "ROUTER_5E0FDC8C-EB6F-01BB-00EF-806BF1BD00EF"}

bash-3.2$
```

A developer is troubleshooting an API with the given API with the given API documentation and cURL command. What is the cause of this problem?

- A. The user is not allowed to post messages from their account
- B. The request body is missing or incomplete
- C. The API token specified is expired
- D. The authorization header is missing or incomplete

Answer: C

NEW QUESTION 344

- (Exam Topic 2)

Refer to the exhibit.

POST - https://webexapis.com/v1/teams

Params Authorization Headers (9) Body Pre-request Script Tests Settings

Headers 8 hidden

| KEY | VALUE | DESCRIPTION |
|---------------|---|-------------|
| Authorization | Bearer OTVjNDk5ZGQtNDc5Yi00MwZGEtZGINDYNzdh_PF84_consumer | |

Body

```
1 {
2   "team": "cisco"
3 }
4
```

Body Cookies Headers (9) Test Results

Status: 400 Bad Request Time: 173 ms Size: 514 B

Pretty Raw Preview Visualize JSON

```
1 {
2   "message": "The request could not be understood by the server due to malformed syntax.",
3   "errors": [
4     {
5       "description": "The request could not be understood by the server due to malformed syntax."
6     }
7   ],
8   "trackingId": "ROUTER_5FBACE02-90AE-01BB-6DE-AC12DF566D6E"
9 }
```

A developer wants to create a room named cisco through Webex API. The developer prepares the request by putting an API token inside the authorization header; however, the given HTTP call returns error code 400. How must the call parameters be changed to ensure a valid response?

- A. Replace the team body parameter with the name body parameter.
- B. Replace cisco with a valid name for a team.
- C. Change the token in the header with the authorization token.
- D. Change the HTTP method of the call to PUT.

Answer: A

NEW QUESTION 346

- (Exam Topic 2)

```
HTTP/1.1 200 OK
Date: Mon, 27 Jul 2009 12:28:53 GMT
Server: nginx
Last-Modified: Wed, 22 Jan 2020 19:15:56 GMT
Content-Length: 88
Content-Type: application/json
Connection: keep-alive

{
  "id": "y123987jdkl",
  "status": "online",
  "type": "switch"
}
```

Which data is specified in the response header?

- A. {"id": "y123987jdkl". HTTP/1.1 200 OK"status: "online", "type": "switch"}
- B. HTTP/1.1 200 OK
- C. "type", "switch"
- D. Content-Type

Answer: B

NEW QUESTION 347

- (Exam Topic 1)

Refer to the exhibit.

For CLI commands that support XML, the `clid()` method returns JSON output. An exception is thrown when XML is not used. Executes CLI commands. Takes CLI command string and returns show command output in a JSON form.

“

Note: The “clid” API can be useful when searching the output of show commands using JSON tools as shown in the example.

PYTHON

```
Example:
>>> import json
>>> from cli import *
>>> jversion = json.loads(clid("show
version"))
>>> jversion['bios_ver_str']
'08.06'
```

Arguments:

- cmd: Single CLI command or a batch of CLI commands. Delimiter for multiple CLI commands is a space followed by a semicolon. Configuration commands must be in a fully qualified form.

Returns:

- string: JSON-formatted output of show commands.

```
>>> from cli import *
>>> import json

>>>
>>> cli('configure terminal ; interface loopback 5 ; no shut')
''
>>> intflist=json.loads(clid('show interface brief'))
>>> i=0
>>> while i < len (intflist['TABLE_interface']['ROW_interface']):
...     intf=intflist['TABLE_interface']['ROW_interface'][i]
...     i=i+1
...     if intf['state'] == 'up':
...         print intf['interface']
```

The python interpreter and the Cisco python SDK are available by default in the Cisco NX-OS software. The SDK documentation shows how the cild() API can be used when working with working with JSON and XML. What are two effect of running the script? (Choose two.)

- A. configure interlace loopback 5
- B. issue shutdown on interface loopback 5
- C. show only the interfaces In the up status
- D. show only the interfaces in admin shut status
- E. show details for the TABLE interface

Answer: AC

Explanation:

Reference:

https://www.cisco.com/c/en/us/td/docs/switches/datacenter/nexus9000/sw/7-x/programmability/guide/b_Cisco_

NEW QUESTION 352

- (Exam Topic 1)

What are two advantages of version control software? (Choose two.)

- A. It supports tracking and comparison of changes in binary formate files.
- B. It allows old versions of packaged applications to be hosted on the Internet
- C. It provides wiki collaboration software for documentation.
- D. It supports comparisons between revisions of source code files.
- E. It allows new team members to access the current code and history.

Answer: DE

NEW QUESTION 357

- (Exam Topic 1)

Which device is a system that monitors and controls incoming and outgoing network traffic based on predetermined security rules?

- A. Switch
- B. Router
- C. Firewall
- D. Load balancer

Answer: C

NEW QUESTION 358

- (Exam Topic 1)

Which HTTP status Code means that the server cannot or will not process the request because of perceived client error?

- A. 100
- B. 203
- C. 303
- D. 400

Answer: D

NEW QUESTION 362

- (Exam Topic 1)

Which API is used to obtain data voicemail ports?

- A. Finesse gadgets
- B. Cisco Unified Communications manager
- C. Webex devices
- D. Webex teams

Answer: B

Explanation:

Cisco Unified Communications Manager (CUCM) provides API access to data management, call management, and voicemail integration. Source: Cisco DevNet Fundamental Course: <https://developer.cisco.com/certification/fundamentals/>

NEW QUESTION 363

- (Exam Topic 1)

What is used in Layer 2 switches to direct packet transmission to the intended recipient?

- A. spanning tree
- B. IPv4 address
- C. IPv6 address
- D. MAC address

Answer: D

NEW QUESTION 367

- (Exam Topic 1)

What are two benefit of managing network configuration via APIs? (Choose two.)

- A. configuration on devices becomes less complex
- B. more security due to locking out manual device configuration
- C. increased scalability and consistency of network changes
- D. eliminates the need of legacy management protocols like SNMP
- E. reduction in network changes performed manually

Answer: CE

NEW QUESTION 368

- (Exam Topic 1)

Refer to the exhibit.

```
module ex-ethernet {
  namespace "http://example.com/Ethernet";
  prefix "eth";
  import ietf-interfaces {
    prefix if;
  }
  augment "/if:interfaces/if:interface" {
    when "if:type = 'ethernetCsmacd'";
    container ethernet {
      must "../if:location" {
        description
          "An Ethernet interface must specify the physical location of the ethernet hardware.";
      }
      choice transmission-params {
        case auto {
          leaf auto-negotiate {
            type empty;
          }
        }
        case manual {
          leaf duplex {
            type enumeration {
              enum "half";
              enum "full";
            }
          }
          leaf speed {
            type enumeration {
              enum "10Mb";
              enum "100Mb";
              enum "1Gb";
              enum "10Gb";
            }
          }
        }
      }
    }
  } // other ethernet specific params...
}
```

What is represented in this YANG module?

- A. interface management
- B. topology
- C. BGP
- D. OpenFlow

Answer: A

NEW QUESTION 371

- (Exam Topic 1)

Refer to the exhibit.

```

1  ---
2  - hosts: {{ router }}
3    gather_facts: true
4    connection: local
5
6  tasks:
7    - ios_command
8      commands:
9        - show run
10       provider: "{{ router_credentials }}"
11       register: config
12
13   - copy:
14     content: "{{ config.stdout[0] }}"
15     dest: "etc/ansible/configs/command_{{ router_hostname }}.txt
16   ...

```

What is the effect of this Ansible playbook on an IOS router?

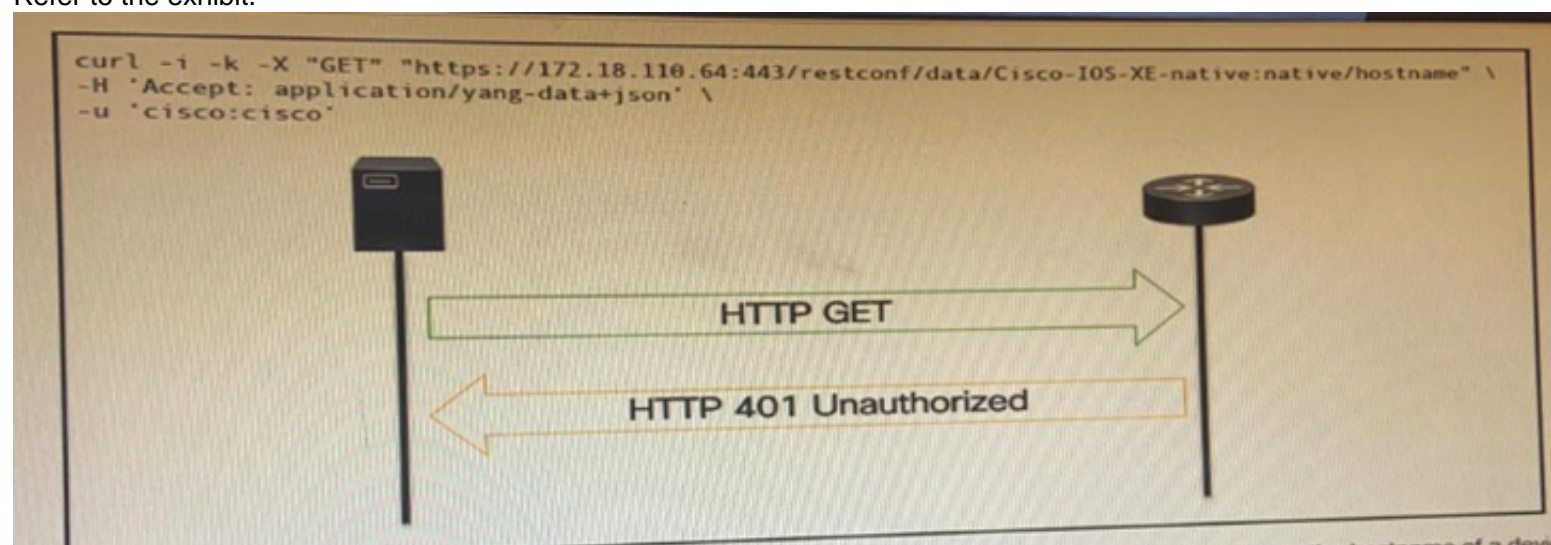
- A. A new running configuration is pushed to the IOS router.
- B. The current running configuration of the IOS router is backed up.
- C. The start-up configuration of the IOS router is copied to a local folder.
- D. A new start-up configuration is copied to the IOS router.

Answer: B

NEW QUESTION 372

- (Exam Topic 1)

Refer to the exhibit.



An administrator attempts to perform a GET using the Cisco IOS XE RESTCONF API to return the hostname of a device. The sequence diagram illustrated the HTTP message observed. Which change to the API request resolves the issue?

- A. Add Content-Type HTTP header with 'application/yang-data+json' using -H 'Content-Type: application/yang-data+json'.
- B. Use -u cisco: cisco instead of -u 'cisco: cisco'.
- C. Change the request method from -X "GET" to- X' POST".
- D. Remove the -H 'Accept: application/yang-data+json' HTTP header because it is not required.

Answer: B

NEW QUESTION 375

- (Exam Topic 1)

In which situation would an edge computing solution be used?

- A. where low latency is needed
- B. where high CPU throughput is needed
- C. where fast memory is needed
- D. where high disk space is needed

Answer: A

NEW QUESTION 379

- (Exam Topic 1)

What are two characteristics of Bare Metal environments that are related to application deployment? (Choose two.)

- A. Provide the hypervisor to host virtual servers
- B. Specifically designed for container-based workloads.
- C. Provides workloads with access to hardware features

- D. Suitable for legacy application that do not support virtualization
- E. Not compatible with other cloud services such as PaaS or SaaS offerings.

Answer: CD

NEW QUESTION 384

- (Exam Topic 1)

Drag and drop the functionalities from the left onto correct networking devices on the right.

| | |
|---|---------------|
| ports are different broadcast domain by default | Firewall |
| ports can be in the same broadcast domain | Load Balancer |
| uses traffic inspection to make routing decisions | Router |
| blocks networks traffic by default | Switch |

- A. Mastered
- B. Not Mastered

Answer: A

Explanation:

1 – D, 2 – C, 3 – A, 4 – B

Reference: <https://geek-university.com/ccna/broadcast-domain-explained/>

NEW QUESTION 387

- (Exam Topic 1)

Refer to the exhibit.


```
[
  {
    "type": "fruit",
    "items": [
      {
        "color": "green",
        "items": [
          "kiwi",
          "grape"
        ]
      },
      {
        "color": "red",
        "items": [
          "strawberry",
          "apple"
        ]
      }
    ]
  },
  {
    "type": "vegs",
    "items": [
      {
        "color": "green",
        "items": [
          "lettuce"
        ]
      },
      {
        "color": "red",
        "items": [
          "pepper"
        ]
      }
    ]
  }
]
```

A REST API return this JSON output for a GET HTTP request, Which has assigned to a variable called "vegetables" Using python, which output is the result of this command?

```
print(filter(lambda l: l['type'] == 'fruit', vegetables)[0]['items'][0]['items'][0])
```

- A. Lettuce
- B. Kiwi
- C. ['kiwi', 'grape']
- D. {'color': 'green', 'items': ['kiwi', 'grape']}

Answer: B

NEW QUESTION 389

- (Exam Topic 1)

Before which process is code review performed when version control is used?

- A. committing code
- B. branching code
- C. merge of code
- D. checkout of code

Answer: C

NEW QUESTION 394

- (Exam Topic 1)

Which CI/CD tool is an automation tool used to build, test, and deploy software?

- A. Nagios
- B. Gradle
- C. Jenkins
- D. Git

Answer: C

Explanation:

Reference:

<https://www.infoworld.com/article/3271126/what-is-cicd-continuous-integration-and-continuous-delivery-expla>

NEW QUESTION 396

- (Exam Topic 1)

Refer to the exhibit.

```
$ diff -u5 fish.py cat.py
--- fish.py      2020-01-02 09:41:02.840000000 +0100
+++ cat.py       2020-01-02 09:41:06.8859999800 +0100
@@ -160,11 +160,12 @@

    @single_request_timeout.setter
    def single_request_timeout(self, value):
        """The timeout (seconds) for a single HTTP REST API request."""
        check_type(value, int, optional=True)
-       assert value is None or value > 0
+       if value is not None and value <= 0:
+           raise ValueError("single_request_timeout must be positive integer")
        self._single_request_timeout = value

    @property
    def wait_on_rate_limit(self):
        """Automatic rate-limit handling.
```

The output of a unified diff when comparing two versions of a python script is shown. Which two “single_request_timeout ()”

A.

```
file: cat.py

160
161     @single_request_timeout.setter
162     def single_request_timeout(self, value):
163         """The timeout (seconds) for a single HTTP REST API request."""
164         check_type(value, int, optional=True)
165         assert value is None or value > 0
166         if value is not None and value <= 0:
167             raise ValueError("single_request_timeout must be positive integer")
168         self._single_request_timeout = value
169
```

B.

```
file: fish.py

160
161     @single_request_timeout.setter
162     def single_request_timeout(self, value):
163         """The timeout (seconds) for a single HTTP REST API request."""
164         check_type(value, int, optional=True)
165         assert value is None or value > 0
166         self._single_request_timeout = value
167
```

C.

file: cat.py

```
160
161 @single_request_timeout.setter
162 def single_request_timeout(self, value):
163     """The timeout (seconds) for a single HTTP REST API request."""
164     check_type(value, int, optional=True)
165     if value is not None and value <= 0:
166         raise ValueError("single_request_timeout must be positive integer")
167     self._single_request_timeout = value
168
169
```

D.

file: fish.py

```
160
161 @single_request_timeout.setter
162 def single_request_timeout(self, value):
163     """The timeout (seconds) for a single HTTP REST API request."""
164     check_type(value, int, optional=True)
165     self._single_request_timeout = value
```

E.

file: cat.py

```
172
173 @single_request_timeout.setter
174 def single_request_timeout(self, value):
175     """The timeout (seconds) for a single HTTP REST API request."""
176     check_type(value, int, optional=True)
177     if value is not None and value <= 0:
178         raise ValueError("single_request_timeout must be positive integer")
179     self._single_request_timeout = value
180
```

- F. Option A
- G. Option B
- H. Option C
- I. Option D
- J. Option E

Answer: BC

NEW QUESTION 400

- (Exam Topic 1)

Refer to Exhibit.

<books>

<science>

<biology>10.00</biology>

<geology>9.00</geology>

<chemistry>8.00</chemistry>

</science>

<math>

<calculus>20.00</calculus>

<algebra>12.00</algebra>

</math>

</books>

Which JSON is equivalent to the XML-encoded data.

A)


```
{
  "books": {
    "science": {
      "biology": "10.00",
      "geology": "9.00",
      "chemistry": "8.00"
    },
    "math": {
      "calculus": "20.00",
      "algebra": "12.00"
    }
  }
}
```

B)

```
[ {
  "books": {
    "science": {
      "biology": "10.00",
      "geology": "9.00",
      "chemistry": "8.00"
    },
    "math": {
      "calculus": "20.00",
      "algebra": "12.00"
    }
  }
} ]
```

C)

```
{
  "books": [
    "science", {
      "biology": "10.00",
      "geology": "9.00",
      "chemistry": "8.00"
    },
    "math", {
      "calculus": "20.00",
      "algebra": "12.00"
    }
  ]
}
```

D)

```
{
  "books": [
    "science": {
      "biology": "10.00",
      "geology": "9.00",
      "chemistry": "8.00"
    },
    "math": {
      "calculus": "20.00",
      "algebra": "12.00"
    }
  ]
}
```

- A. Option A
- B. Option B
- C. Option C
- D. Option D

Answer: A

NEW QUESTION 405

- (Exam Topic 1)

Which response status code is used by a RESTful interface to indicate successful execution of a request?

- A. 200
- B. 404
- C. 405
- D. 500

Answer: A

NEW QUESTION 406

- (Exam Topic 1)

How does requesting a synchronous API operation differ from requesting an asynchronous API operation?

- A. clients poll for the status of the execution of operations
- B. clients subscribe to a webhook for operation results
- C. clients can access the results immediately
- D. clients receive responses with a task id for further processing

Answer: C

NEW QUESTION 408

- (Exam Topic 1)

What are two security benefits of a Docker-based application?

- A. easier to patch because Docker containers include only dependencies that the application requires
- B. prevents information leakage that can occur when unhandled exceptions are returned in HTTP responses
- C. allows for separation of application that traditionally run in the same host
- D. natively secures access to secrets that are used by the running application
- E. guarantees container images are secured and free of vulnerabilities

Answer: AC

NEW QUESTION 410

- (Exam Topic 1)

What is an example of a network interface hardware address?

- A. domain name
- B. IP address
- C. workstation name
- D. MAC address

Answer: D

NEW QUESTION 414

- (Exam Topic 1)

Which two statements are true about Cisco UCS manager, Cisco Intersight APIs? (Choose two.)

- A. Cisco Intersight API interactions can be encoded in XML or JSON and require an APIs key in the HTTP header for authentication.
- B. USC Director API interactions can be XML- or JSON-encoded and require an APLs key in the HTTP header for authentication.
- C. UCS manager API interactions are XML-encoded and require a cookie in the method for authentication.
- D. Cisco Intersight uses XML to encoded API interactions and requires an API key pair for authentication.
- E. UCS manager uses JSON to encode API interactions and utilizes Base64-encoded credentials in the HTTP header for authentication.

Answer: BC

Explanation:

Reference:

https://www.cisco.com/c/en/us/td/docs/unified_computing/ucs/ucs-director/rest-api-getting-started-guide/6-5/cis

https://www.cisco.com/c/en/us/td/docs/unified_computing/ucs/sw/api/b_ucs_api_book.pdf

NEW QUESTION 416

- (Exam Topic 1)

Refer to the exhibit.

URL: https://<ASA_IP>/api/access/global/rules

Method: POST

Payload:

```

{
  "destinationAddress": {
    "kind": "IPv4Address",
    "value": "10.1.1.1"
  },
  "remarks": [ ],
  "active": true
  "permit": true,
  "sourceAddress": {
    "kind": "IPv4Address",
    "value": "192.168.1.1"
  }
}

```

Response Status Code: 400 Bad Request

```

{"messages":[{"level":"Error","code":"JSON-PARSE-ERROR","details":"
Unexpected character ('\"' (code 34)):

```

What caused the error in this API request?

- A. The API resource does not support the POST operation
- B. The API resource does not support JSON format payloads.
- C. The submitted JSON payload includes a field that is not supported by the API resource.
- D. The submitted JSON payload has a formatting issue

Answer: D

NEW QUESTION 418

- (Exam Topic 1)

The project is migrated to a new codebase, the "old_project" directory must be deleted. The directory has multiple read-only files, and it must be deleted recursively without prompting for confirmation. Which bash command must be used?

- A. `rm -rf old_project`
- B. `rm -r old_project`
- C. `rmdir -p old_project`
- D. `rmdir old_project`

Answer: A

NEW QUESTION 422

- (Exam Topic 1)

What operation is performed with YANG model-driven programmability in NX-OS?

- A. configure a device with native and OpenConfig-based models
- B. send CLI commands to a device and retrieve output in JSON format
- C. run Linux commands natively on the device
- D. bootstrap a device that has a factory-default configuration

Answer: A

Explanation:

Reference:

<https://www.cisco.com/c/en/us/products/collateral/switches/nexus-9000-series-switches/white-paper-c11-74151>

NEW QUESTION 425

- (Exam Topic 1)

Which description of a default gateway is true?

- A. It is a device that receives IP packets that have no explicit next-hop in the routing table.
- B. It is a feature that translates between public and private addresses.
- C. It is a security feature that denies certain traffic.
- D. It is a device that receives Layer 2 frames with an unknown destination address.

Answer: A

Explanation:

Refe

<https://www.certificationkits.com/cisco-certification/ccna-articles/cisco-ccna-intro-to-routing-basics/cisco-ccna>

NEW QUESTION 429

- (Exam Topic 1)

Which two statements about JSON and XML are true? (Choose two.)

- A. JSON objects are collection of key value pair.
- B. The syntax of JSON contains tags, elements, and attributes.
- C. JSON arrays are an unordered set of key value pairs.
- D. The syntax of XML contains tags, elements, and attributes.
- E. XML objects are collections of key-value pairs.

Answer: AD

NEW QUESTION 432

- (Exam Topic 1)

Which device is used to transport traffic from one broadcast domain to another broadcast domain?

- A. load balancer
- B. layer 2 switch
- C. router
- D. proxy server

Answer: C

NEW QUESTION 436

- (Exam Topic 1)

Which type of HTTP method is used by the Meraki nad webex teams APIs to send webhook notifications?

- A. HTTP GET
- B. HTTP PUT
- C. HTTP HEAD
- D. HTTP POST

Answer: D

Explanation:

Reference: <https://meraki.cisco.com/blog/tag/alerts/>

NEW QUESTION 438

- (Exam Topic 1)

Which principle is a value from the manifesto for Agile software development?

- A. adhering to a plan over responding to requirements
- B. detailed documentation over working software
- C. processes and tools over teams and inter actions
- D. customer collaboration over contract negotiation

Answer: D

Explanation:

Reference: https://www.cisco.com/c/dam/global/en_hk/solutions/collaboration/files/agile_product_development.pdf

NEW QUESTION 443

- (Exam Topic 1)

Refer to the exhibit.

```
#!/bin/bash
read ndir
while [ -d "$ndir" ]
do
cd $ndir
done
mkdir $ndir
```

What is the action of the Bash script that is shown?

- A. The script waits until input is entered
- B. If the directory exists, the script goes into it until there is no directory with the same name, then it creates a new directory.
- C. The script goes into the directory called "\$ndir" and makes a new directory called "\$ndir"
- D. The script waits until input is entered, then it goes into the directory entered and creates a new directory with the same name.
- E. For all directories in the current folder
- F. The script goes into directory and makes a new directory.

Answer: A

NEW QUESTION 445

- (Exam Topic 1)

Which two query types does a client make to a DNS server? (Choose Two)

- A. AAAA
- B. ACK
- C. DISCOVER
- D. Inverse
- E. PTR

Answer: AE

NEW QUESTION 447

- (Exam Topic 1)

Refer to the exhibit.

URL: https://<ASA_IP>/api/access/global/rules

Method: POST

Payload:

```
{
  "destinationAddress": {
    "kind": "IPv4Address",
    "value": "10.1.1.1"
  },
  "remarks": [ ],
  "active": true
  "permit": true,
  "sourceAddress": {
    "kind": "IPv4Address",
    "value": "192.168.1.1"
  }
}
```

Response Status Code: 400 Bad Request

```
{
  "messages": [
    {
      "level": "Error",
      "code": "JSON-PARSE-ERROR",
      "details": "Unexpected character ('\"' (code 34)):"
    }
  ]
}
```

What caused the error in this API request?

- A. The API resource does not support the POST operation.
- B. The API resource does not support JSON format payloads.
- C. The submitted JSON payload includes a field that is not supported by the API resources.
- D. The submitted JSON payload has a formatting issue.

Answer: D

NEW QUESTION 450

- (Exam Topic 1)

Which status code is used by a REST API to indicate that the submitted payload is incorrect?

- A. A.-400B.403C.405D.429

Answer: A

Explanation:

Reference:

<https://community.cisco.com/t5/application-centric/apic-rest-api-produces-inconsistent-response/td-p/2758230>

NEW QUESTION 453

- (Exam Topic 1)

What is a tenet of test-driven development?

- A. write documentation for tests
- B. write tests after adding new blocks of code
- C. write and run tests before writing new code
- D. run tests after writing new code

Answer: C

NEW QUESTION 454

- (Exam Topic 1)

Which two elements are foundational principles of DevOps? (Choose two.)

- A. designing applications as microservices
- B. encouraging containers for the deployment of applications
- C. organizing cross-functional teams over organizational silos
- D. optimizing the cost of infrastructures
- E. automating over documenting

Answer: CE

NEW QUESTION 458

- (Exam Topic 1)

Which two types of NAT are used in a network? (Choose two.)

- A. Static NAT
- B. Normal NAT
- C. Multicast NAT
- D. Dynamic NAT
- E. Router NAT

Answer: AD

Explanation:

Reference: <https://www.dummies.com/programming/networking/cisco/types-of-network-address-translation/>

NEW QUESTION 461

- (Exam Topic 1)

Which Cisco DevNet resource allows access to products in a development lab to explore, learn, and build application that use Cisco APLs?

- A. DevNet communities
- B. DevNet code Exchange
- C. DevNet Automation Exchange
- D. DevNet sandbox

Answer: D

Explanation:

Reference: <https://developer.cisco.com/site/sandbox/>

NEW QUESTION 463

- (Exam Topic 1)

An application calls a REST API and expects a result set of more than 550 records, but each time the call is made, only 25 are returned. Which feature limits the amount of data that is returned by the API?

- A. pagination
- B. payload limit
- C. rate limiting
- D. service timeouts

Answer: A

NEW QUESTION 468

- (Exam Topic 1)

Which type of threat occur when an attacker can send hostile data to an interpreter within an application?

- A. Cross-site scripting
- B. Sensitive data exposure
- C. Broken authentication
- D. Injection

Answer: D

Explanation:

Reference: https://owasp.org/www-project-top-ten/OWASP_Top_Ten_2017/Top_10-2017_A1-Injection

NEW QUESTION 473

- (Exam Topic 1)

When a Cisco IOS XE networking device is configured using RESTCONF, what is the default data-encoding method?

- A. XML
- B. x-form-encoding
- C. YANG
- D. YAML

Answer: A

NEW QUESTION 474

- (Exam Topic 1)

Which two encoding formats do YANG interfaces support?

- A. JSON
- B. XML
- C. XHTML
- D. Plain text
- E. BER

Answer: AB

Explanation:

Reference:

https://www.cisco.com/c/en/us/td/docs/ios-xml/ios/prog/configuration/171/b_171_programmability_cg/model_d

NEW QUESTION 475

- (Exam Topic 1)

Drag and drop the Python code from the left onto the correct step on the right to call a REST API.

| | |
|--|---|
| <pre>response = requests.post(url, data=json.dumps(payload), \ headers=header, verify=False)</pre> | Step 1 – Import the correct libraries. |
| <pre>ticket = r_json["Token"] print (ticket)</pre> | Step 2 – Declare the necessary variable. |
| <pre>(_json = response.json() print(r_json)</pre> | Step 3 – Send the HTTP Request. |
| <pre>import requests import json</pre> | Step 4 – Format and display the response in JSON readable format. |
| <pre>controller = 'devnetapi.cisco.com/sandbox/dnacenter' url = 'https://' + controller + '/dna/system/api/v1/auth/token' payload = { 'username': 'devnetuser', 'password': 'pa55word' } header = { 'Content-type': 'application/json' }</pre> | Step 5 – Parse the response to display the Service Ticket. |

- A. Mastered
- B. Not Mastered

Answer: A

Explanation:

| | |
|--|--|
| <pre>response = requests.post(url, data=json.dumps(payload), \ headers=header, verify=False)</pre> | <pre>import requests import json</pre> |
| <pre>ticket = r_json["Token"] print (ticket)</pre> | <pre>controller = 'devnetapi.cisco.com/sandbox/dnacenter' url = 'https://' + controller + '/dna/system/api/v1/auth/token' payload = { 'username': 'devnetuser', 'password': 'pa55word' } header = { 'Content-type': 'application/json' }</pre> |
| <pre>(_json = response.json() print(r_json)</pre> | <pre>response = requests.post(url, data=json.dumps(payload), \ headers=header, verify=False)</pre> |
| <pre>import requests import json</pre> | <pre>(_json = response.json() print(r_json)</pre> |
| <pre>controller = 'devnetapi.cisco.com/sandbox/dnacenter' url = 'https://' + controller + '/dna/system/api/v1/auth/token' payload = { 'username': 'devnetuser', 'password': 'pa55word' } header = { 'Content-type': 'application/json' }</pre> | <pre>ticket = r_json["Token"] print (ticket)</pre> |

NEW QUESTION 477

- (Exam Topic 1)

Drag and drop the descriptions from the left onto correct application deployment models on the right.

| | |
|---|----------------|
| provides a low-latency compute capability close to the data source | Public Cloud |
| environment where you pay only for the resources that you consume | |
| offers a self-service, elastic compute environment from a dedicated set of physical resources | Private Cloud |
| provides an approach for overflow traffic to burst out to meet peak demands | |
| shared compute platform that is offered over the Internet | Hybrid Cloud |
| | Edge Computing |

- A. Mastered
- B. Not Mastered

Answer: A

Explanation:

1 – B, 2 – E, 3 – C, 4 – D, 5 – A

NEW QUESTION 479

- (Exam Topic 1)

Which detail is included in a routing table?

- A. IP protocol
- B. Broadcast address
- C. TCP or UDP port number
- D. Destination next hop or outgoing interface

Answer: D

Explanation:

Reference: <https://geek-university.com/ccna/routing-table-explained/>

NEW QUESTION 484

- (Exam Topic 1)

What is the purpose of the Cisco VIRL software tool?

- A. To verify configurations against compliance standards
- B. To simulate and model networks
- C. To automate API workflows
- D. To test performance of an application

Answer: B

Explanation:

Reference: <https://www.speaknetworks.com/cisco-virl-better-gns3/>

NEW QUESTION 488

- (Exam Topic 1)

Which is an advantage of using network programmability?

- A. It removes CLI access for devices.
- B. It provides for more scalable and replicable network provisioning.
- C. Manual configuration is faster.
- D. No cloud abstraction occurs.

Answer: B

NEW QUESTION 491

- (Exam Topic 1)

On which port does NETCONF operate by default?

- A. 23
- B. 443
- C. 822
- D. 830

Answer: D

NEW QUESTION 492

- (Exam Topic 1)

Which platform is run directly using a hypervisor?

- A. Virtual
- B. Bare metal systems
- C. Containers
- D. Applications

Answer: C

NEW QUESTION 494

- (Exam Topic 1)

Which mechanism is used to consume a RESTful API design when large amounts of data are returned?

- A. Data sets
- B. Scrolling
- C. Blobs
- D. Pagination

Answer: D

Explanation:

Reference: <https://nordicapis.com/everything-you-need-to-know-about-api-pagination/>

NEW QUESTION 499

- (Exam Topic 1)

A developer is reviewing a code that was written by a colleague. It runs fine, but there are many lines of code to do a seemingly simple task repeatedly. Which action organizes the code?

- A. Refactor the code by removing any unnecessary tests
- B. Using functions, rewrite any pieces of code that are repeated
- C. Reverse engineer and rewrite the code logic
- D. Modify the code to use loops

Answer: B

NEW QUESTION 500

- (Exam Topic 1)

Refer to the exhibit.

```
json_string = """
{
    "researcher": {
        "name": "Ford Perfect",
        "species": "Betelgeusian",
        "relatives": [
            {
                "name": "Zaphod Beeblebrox",
                "species": "Betelgeusian"
            }
        ]
    }
}
"""

my_json = json.loads(json_string)
```

Which python data structure does my_json contain?

- A. List
- B. Json
- C. Map
- D. Dict

Answer: D

Explanation:

Reference:

<https://stackoverflow.com/questions/34764979/loading-python-string-with-u-as-json?noredirect=1&lq=1>**NEW QUESTION 505**

- (Exam Topic 1)

Which line is an example of the start of a chunk from a unified diff?

- A. @@ -90,88 +20191008T1349@@
- B. @@ -20191007T1200 +88,90 @@
- C. @@ -20191007T1200 +20191008T1349@@
- D. @@ -88,10 +88,6 @@

Answer: D**Explanation:**

Reference:

<https://unix.stackexchange.com/questions/252927/what-do-the-numbers-in-the-line-mean-in-output-of-diff>**NEW QUESTION 509**

- (Exam Topic 1)

Refer to the exhibit.

```
---
- hosts: switch2960cx
  gather_facts: no

  tasks:
    - ios_l2_interface:
      name: GigabitEthernet0/1
      state: unconfigured

    - ios_l2_interface:
      name: GigabitEthernet0/1
      mode: trunk
      native_vlan: 1
      trunk_allowed_vlans: 6-8
      state: present

    - ios_vlan:
      vlan_id: 6
      name: guest-vlan
      interfaces:
        - GigabitEthernet0/2
        - GigabitEthernet0/3

    - ios_vlan:
      vlan_id: 7
      name: corporate-vlan
      interfaces:
        - GigabitEthernet0/4

    - ios_vlan:
      vlan_id: 8
      name: iot-vlan
      interfaces:
        - GigabitEthernet0/5
```

Which two statements describe the configuration of the Ansible script if run? (Choose two.)

- A. Traffic on port 0/2 and 0/3 is connected to port 0/6.
- B. Traffic from ports 0/2 to 0/5 can flow on port 0/1 due to the trunk.
- C. Traffic can flow between ports 0/2 to 0/5 due to the trunk on port 0/1.
- D. GigabitEthernet0/2 and GigabitEthernet0/3 are access ports for VLAN 6.
- E. GigabitEthernet0/1 is left unconfigured.

Answer: BD**NEW QUESTION 514**

.....

THANKS FOR TRYING THE DEMO OF OUR PRODUCT

Visit Our Site to Purchase the Full Set of Actual 200-901 Exam Questions With Answers.

We Also Provide Practice Exam Software That Simulates Real Exam Environment And Has Many Self-Assessment Features. Order the 200-901 Product From:

<https://www.2passeasy.com/dumps/200-901/>

Money Back Guarantee

200-901 Practice Exam Features:

- * 200-901 Questions and Answers Updated Frequently
- * 200-901 Practice Questions Verified by Expert Senior Certified Staff
- * 200-901 Most Realistic Questions that Guarantee you a Pass on Your FirstTry
- * 200-901 Practice Test Questions in Multiple Choice Formats and Updatesfor 1 Year