

## Exam Questions 010-151

Cisco Certified Technician (CCT) for Data Center

<https://www.2passeasy.com/dumps/010-151/>



#### NEW QUESTION 1

Which method does FCIP use to enable connectivity of geographically distributed Fibre Channel SANs over IP?

- A. routing
- B. tunneling
- C. handshaking
- D. transporting

**Answer: B**

#### NEW QUESTION 2

Which fiber optic cable type is used most often with a Subscriber connector?

- A. dual-mode
- B. single-mode
- C. straight-mode
- D. multi-mode
- E. subscriber-mode

**Answer: B**

#### NEW QUESTION 3

Which two statements about the Ethernet media are true? (Choose two.)

- A. A twisted-pair cable system has each pair of wires twisted together to reduce electromagnetic interferenc
- B. Compared to multimode fiber, the single-mode fiber is designed for shorter distances with higher cos
- C. 40 Gigabit Ethernet twinax cables deploy Enhanced Quad Small Form Factor Pluggable (QSFP+) connector
- D. The twinax cables can be found in either a shielded twisted-pair or an unshielded twisted-pair variatio

**Answer: AC**

#### NEW QUESTION 4

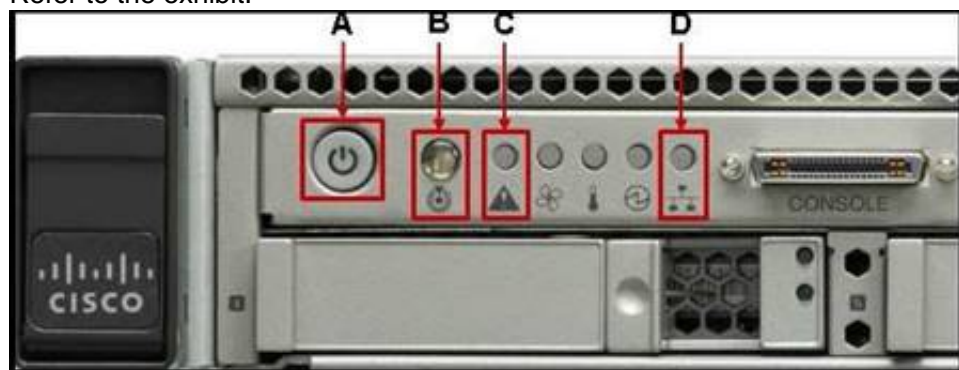
Which two statements about PCIe are true? (Choose two.)

- A. The PCIe link is built around dedicated unidirectional couples of serial, point-to-point connections known as lane
- B. You can install a PCI Express x8 adapter into an x4 slo
- C. The PCIe standard is a bus-based system in which all the devices share the same bidirectional, 32-bit or 64-bit, parallel signal pat
- D. The PCIe 1.0 standard doubles the transfer rate compared to PCIe 2.0.
- E. A link that is composed of four lanes is called an x4 lin

**Answer: AE**

#### NEW QUESTION 5

Refer to the exhibit.



Which statement correctly identifies the front panel LEDs on the Cisco UCS C220 Server?

- A. A is power button and power status LED; B is identification button and LED; C is system status LED; D is network link activity LE
- B. A is network link activity LED; B is system status LED; C is power button and power status LED; D is identification button and LE
- C. A is system status LED; B is network link activity LED; C is power button and power status LED; D is identification button and LE
- D. A is network link activity LED; B is system status LED; C is identification button and LED; D is power button and power status LE

**Answer: A**

#### NEW QUESTION 6

Which processor option is supported in the Cisco UCS C420 M3 Server?

- A. up to two Intel Xeon E5-4600 series multicore processors
- B. up to two Intel Xeon E7-4800 series multicore processors
- C. up to four Intel Xeon E5-4600 series multicore processors
- D. two or four Intel Xeon E7-8800 series multicore processors

**Answer: C**

#### NEW QUESTION 7

Refer to the exhibit.



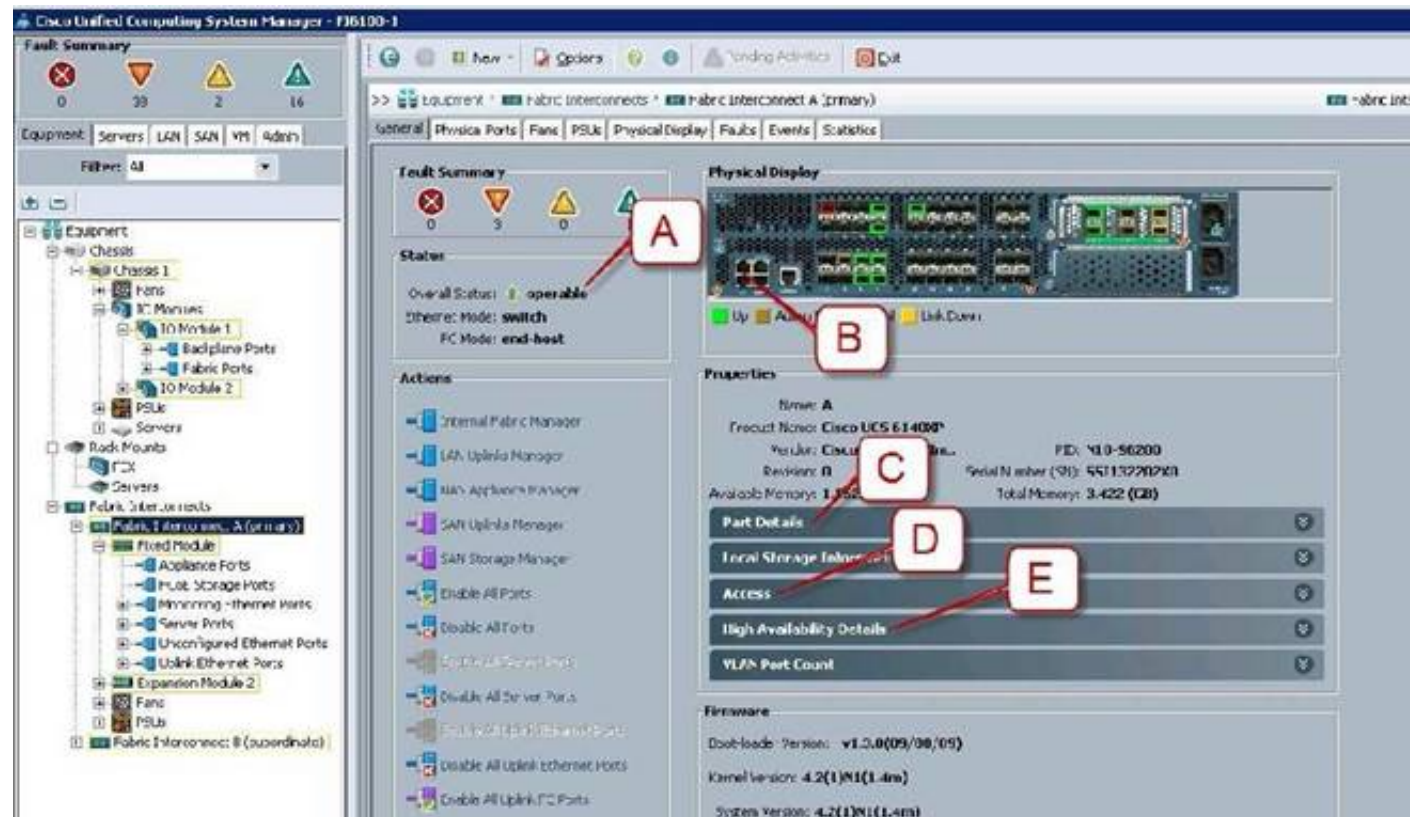
What is the name of this rack-mount server?

- A. Cisco UCS C220 Rack-Mount Server
- B. Cisco UCS C240 Rack-Mount Server
- C. Cisco UCS C420 Rack-Mount Server
- D. Cisco UCS C460 Rack-Mount Server

Answer: C

### NEW QUESTION 8

Refer to the exhibit.



Where is the best place to see whether the system is ready for a Fabric Interconnect failover?

- A. A - Overall Status operable
- B. B - L1 Connection
- C. C - Part Details
- D. D - Access
- E. E - High Availability Details

Answer: E

### NEW QUESTION 9

Which Cisco NX-OS command displays kernel uptime?

- A. show module
- B. show version
- C. show license
- D. show boot
- E. show interface

Answer: B

### NEW QUESTION 10

Which two commands display the version of Cisco NX-OS code that the device is currently running on? (Choose two.)

- A. show version
- B. show module
- C. show interface
- D. show boot
- E. show license

Answer: AB

### NEW QUESTION 10

On the Sensors page from the CIMC view, which four tabs are displayed to view further information? (Choose four.)

- A. Power Supply

- B. Fan
- C. Memory
- D. CPU
- E. LEDs
- F. Temperature

**Answer:** ABEF

#### NEW QUESTION 14

If the Overall Status for a Cisco UCS B-Series Blade Server indicates a failure in the Cisco UCS Manager, such as discovery-failed, which statement is true?

- A. The server shuts dow
- B. The server automatically reboots reboot in 3 minute
- C. The endpoints on that server cannot be upgrade
- D. The server is online, but the administrator cannot assign a service profile to that blad

**Answer:** C

#### NEW QUESTION 18

Which three statements about powering down a Cisco UCS C-Series Rack-Mount Server to perform maintenance or replacement are true? (Choose three.)

- A. Standby power mode: Power is supplied only to the service processor and the cooling fans, and it is safe to power off the server from this mod
- B. Power status LE
- C. Green indicates that the server is in main power mode and can be safely powered of
- D. Graceful shutdown: Press and release the power butto
- E. The operating system performs a graceful shutdown, and the server goes to standby mode, which is indicated by an amber power status LE
- F. Disconnect the power cords from the power supplies in your server to completely power off the serve
- G. Only an emergency shutdown can be performed using the power button on the server front pane
- H. The Cisco UCS C-Series Rack-Mount Server has only one power mod

**Answer:** ACD

#### NEW QUESTION 23

Which three components are hot swappable in a Cisco UCS Blade Server and Chassis? (Choose three.)

- A. Fabric Extender
- B. Power supply
- C. Heat sink
- D. SAS Hard Drive
- E. 2x8GB Kit DIMMs
- F. Mezzanine card

**Answer:** ABD

#### NEW QUESTION 26

Which five things should the administrator verify after performing maintenance or replacing a blade server? (Choose five.)

- A. blade server status
- B. hard drive status
- C. host OS boot status
- D. CPU status
- E. mezzanine card status
- F. memory DIMM status
- G. fan and power status

**Answer:** ABDEF

#### NEW QUESTION 31

After installation or replacement of a Cisco UCS C-Series Rack-Mount Server, the host does not boot. Which four options should be verified? (Choose four.)

- A. Verify the power source to the equipmen
- B. Check for loose HDD cable
- C. Reseat the DIMMs, CPU, and PCI card
- D. Verify that power supplies are receiving powe
- E. Reseat the mezzanine card connecto
- F. Check the CPU sockets for bent pin
- G. Check the Cisco IMC for fan fault

**Answer:** ACDF

#### NEW QUESTION 33

Which two commands allow you to view the state of high availability between the two clustered Fabric Interconnects? (Choose two.)

- A. show cluster state extended
- B. show cluster extended-state
- C. show cluster HA status



D. show cluster state

**Answer:** BD

#### NEW QUESTION 37

Which three troubleshooting procedures do you perform when there is no power to a Cisco UCS B250 M2 Blade Server? (Choose three.)

- A. Decommission and acknowledge the blad
- B. Check the back of the blade to ensure that there is no damage to the connection that goes into chassi
- C. Reseat the memory DIMM
- D. Check the CPU sockets for bent pin
- E. Reseat the blade in the same slot in the chassi
- F. Move the blade to another slot in the chassi

**Answer:** BEF

#### NEW QUESTION 41

Which two remote file system methods are used in the training material to transfer firmware to the Fabric Interconnect? (Choose two.)

- A. FTPS
- B. FTP
- C. TFTP
- D. RSH

**Answer:** BC

#### NEW QUESTION 44

On which three devices can the Host Upgrade Utility be performed? (Choose three.)

- A. C420
- B. C230
- C. B230
- D. B210
- E. C210
- F. B460
- G. C240

**Answer:** AEG

#### NEW QUESTION 49

Up to what speed can Category 5 UTP cable transmit data?

- A. 10 Mb/s
- B. 100 Mb/s
- C. 1000 Mb/s
- D. 10000 Mb/s

**Answer:** C

#### NEW QUESTION 51

Refer to the exhibit.



Which three options are features of the Cisco UCS 6248UP Fabric Interconnect front panel? (Choose three.)

- A. Console port
- B. FCoE port
- C. 10 Gb/s port
- D. Fan module
- E. USB port

**Answer:** ADE

#### NEW QUESTION 55

.....

## THANKS FOR TRYING THE DEMO OF OUR PRODUCT

Visit Our Site to Purchase the Full Set of Actual 010-151 Exam Questions With Answers.

We Also Provide Practice Exam Software That Simulates Real Exam Environment And Has Many Self-Assessment Features. Order the 010-151 Product From:

<https://www.2passeasy.com/dumps/010-151/>

## Money Back Guarantee

### 010-151 Practice Exam Features:

- \* 010-151 Questions and Answers Updated Frequently
- \* 010-151 Practice Questions Verified by Expert Senior Certified Staff
- \* 010-151 Most Realistic Questions that Guarantee you a Pass on Your FirstTry
- \* 010-151 Practice Test Questions in Multiple Choice Formats and Updatesfor 1 Year