

Exam Questions SnowPro-Core

SnowPro Core Certification Exam

<https://www.2passeasy.com/dumps/SnowPro-Core/>



NEW QUESTION 1

- (Exam Topic 1)

Which interfaces can be used to create and/or manage Virtual Warehouses?

- A. The Snowflake Web Interface (UI)
- B. SQL commands
- C. Data integration tools
- D. All of the above

Answer: D

Explanation:

Reference: <https://docs.snowflake.com/en/user-guide/warehouses.html>

NEW QUESTION 2

- (Exam Topic 1)

True or False: Snowflake charges a premium for storing semi-structured data.

- A. True
- B. False

Answer: B

Explanation:

Reference:

<https://snowflakecommunity.force.com/s/question/0D50Z00008ckwNuSAI/does-snowflakecharges- premium-for-storing-semi-structured-data>

NEW QUESTION 3

- (Exam Topic 1)

What services does Snowflake automatically provide for customer that they may have been responsible for with their on premise system? Select all the below that apply.

- A. Installing and configuring hardware
- B. Patching software
- C. Physical security
- D. Maintaining metadata and statistics

Answer: ABD

NEW QUESTION 4

- (Exam Topic 1)

A deterministic query is run at 8am, takes 5 minutes, and the results are cached. Which of the following statements are true?

Choose 2 answers

- A. The exact query will ALWAYS return the precomputed result set for the RESULT_CACHE_ACTIVE = time period
- B. The same exact query will return the precomputed results if the underlying data hasn't changed and the results were last accessed within the previous 24 hour period
- C. The same exact query will return the precomputed results even if the underlying data has changed as long as the results were last accessed within the previous 24 hour period
- D. The "24 hour" on the precomputed results gets renewed every time the exact query is executed

Answer: BD

Explanation:

The results cache will only be used if it's the same query AND the same role executing the query

NEW QUESTION 5

- (Exam Topic 1)

True or False: Micro-partition metadata enables some operations to be completed without requiring Compute.

- A. True
- B. False

Answer: A

Explanation:

Reference: <https://blog.ippon.tech/innovative-snowflake-features-caching/>

NEW QUESTION 6

- (Exam Topic 1)

Which of the following connectors allow Multi-Factor Authentication (MFA) authorization when connecting? (Choose all that apply.)

- A. JDBC
- B. SnowSQL
- C. Snowflake Web Interface (UI)
- D. ODBC

E. PythonD18912E1457D5D1DDCBD40AB3BF70D5D

Answer: ABCDE

Explanation:

Reference: <https://docs.snowflake.com/en/user-guide/security-mfa.html>

NEW QUESTION 7

- (Exam Topic 1)

True or False: All Snowflake table types include fail-safe storage.

A. True

B. False

Answer: B

NEW QUESTION 8

- (Exam Topic 1)

True or False: A single database can exist in more than one Snowflake account.

A. True

B. False

Answer: B

Explanation:

Reference: <https://docs.snowflake.com/en/sql-reference/ddl-database.html>

NEW QUESTION 9

- (Exam Topic 1)

Which of the following statements are true of Snowflake data loading? Choose 3 answers

A. VARIANT "nut" values are not the same as SQL Null values

B. It is recommended to do frequent, single row DMLS

C. It is recommended to validate the data before loading into the Snowflake target table

D. It is recommended to use staging tables to manage MERGE statements

Answer: ACD

NEW QUESTION 10

- (Exam Topic 1)

True or False: A Snowflake account is charged for data stored in both Internal and External Stages.

A. True

B. False

Answer: A

Explanation:

Reference: <https://docs.snowflake.com/en/user-guide/tables-storage-considerations.html>

NEW QUESTION 10

- (Exam Topic 1)

Which of the following statements are true of VALIDATION_MODE in Snowflake? (Choose two.)

A. The validation_mode option is used when creating an Internal Stage

B. validation_mode=return_all_errors is a parameter of the copy command

C. The validation_mode option will validate data to be loaded by the copy statement while completing the load and will return the rows that could not be loaded without error

D. The validation_mode option will validate data to be loaded by the copy statement without completing the load and will return possible errors

Answer: BD

Explanation:

Reference: <https://docs.snowflake.com/en/user-guide/data-load-bulk-ts.html>

NEW QUESTION 13

- (Exam Topic 1)

Which of the following DML commands isn't supported by Snowflake?

A. UPSERT

B. MERGE

C. UPDATE

D. TRUNCATE TABLE

Answer: A

Explanation:

Reference: <https://docs.snowflake.com/en/sql-reference/sql-dml.html>

NEW QUESTION 15

- (Exam Topic 1)

Which object allows you to limit the number of credits consumed within a Snowflake account? Select one.

- A. Account usage Tracking
- B. Resource Monitor
- C. Warehouse Limit Parameter
- D. Credit Consumption Tracker

Answer: B

Explanation:

The time travel data retention can be overwritten at the table level "When creating a table, schema, or database, the account default can be overridden using the DATA_RETENTION_TIME_IN_DAYS parameter in the command."

NEW QUESTION 20

- (Exam Topic 1)

True or False: AWS Private Link provides a secure connection from the Customer's on-premise data center to the Snowflake.

- A. True
- B. False

Answer: B

Explanation:

Reference: <https://docs.snowflake.com/en/user-guide/admin-security-privatelink.html>

NEW QUESTION 23

- (Exam Topic 1)

Which statements are true of micro-partitions? Choose 2 answers

- A. They are approximately 16MB in size
- B. They are stored compressed only if COMPRESS=TRUE on Table
- C. They are Immutable
- D. They are only encrypted in the Enterprise edition and above

Answer: AC

Explanation:

Reference: <https://medium.com/weareservian/seeing-snow-for-the-first-time-snowflake-adventures-part-1-731ddc983c69>

NEW QUESTION 27

- (Exam Topic 1)

Which of the following objects is not covered by Time Travel?

- A. Tables
- B. Schemas
- C. Databases
- D. Stages

Answer: D

Explanation:

Reference: <https://docs.snowflake.com/en/user-guide/data-time-travel.html>

NEW QUESTION 32

- (Exam Topic 1)

How a Snowpipe charges calculated?

- A. Per-second/per Warehouse size
- B. Per-second/per-core granularity
- C. Number of Pipes in account
- D. Total storage bucket size

Answer: B

Explanation:

Reference: <https://docs.snowflake.com/en/user-guide/data-load-snowpipe-billing.html>

NEW QUESTION 37

- (Exam Topic 1)

A role is created and owns 2 tables. This role is then dropped. Who will now own the two tables?

- A. The tables are now orphaned
- B. The user that deleted the role
- C. SYSADMIN
- D. The assumed role that dropped the role

Answer: D

Explanation:

Reference: <https://docs.snowflake.com/en/sql-reference/sql/drop-role.html>

NEW QUESTION 42

- (Exam Topic 1)

Which of the following are valid Snowflake Virtual Warehouse Scaling Policies? (Choose two.)

- A. Custom
- B. Economy
- C. Optimized
- D. Standard

Answer: BD

Explanation:

Reference: <https://community.snowflake.com/s/article/Snowflake-Visualizing-Warehouse-Performance>

NEW QUESTION 45

- (Exam Topic 1)

Which are true of Snowflake roles?

- A. All grants to objects are given to roles, and never to users
- B. In order to do DML/DOL, a user needs to have selected a single role that has that specific access to the object and operation
- C. The public role controls all other roles
- D. Roles are a subset of users and users own objects in Snowflake

Answer: AB

NEW QUESTION 48

- (Exam Topic 1)

Which of the following are best practices for users with the SYSADMIN/ACCOUNTADMIN roles? Choose 3 answers

- A. Their default role should be set to SYSTEMADMIN (the lower of the two)
- B. They should not set up multi_Factor Authentication (MFA)—as administrator they may need to change the MFA settings and those enrolled in MFA are unable to do so
- C. They should only access and 'step into' the ACCOUNTADMIN role temporarily, as needed to complete a specific operation
- D. They should ensure all database objects in the account are owned by the ACCOUNTADMIN role
- E. They should use the SYSADMIN role to perform administrative work on database objects

Answer: ACE

NEW QUESTION 53

- (Exam Topic 1)

How many shares can be consumed by single Data Consumer?

- A. 1
- B. 10
- C. 100, but can be increased by contacting support
- D. Unlimited

Answer: D

Explanation:

Reference: <https://docs.snowflake.com/en/user-guide/data-sharing-intro.html>

NEW QUESTION 55

- (Exam Topic 1)

Which of the following are common use cases for zero-copy cloning? Choose 3 answers

- A. Quick provisioning of Dev and Test/QA environments
- B. Data backups
- C. Point in time snapshots
- D. Performance optimization

Answer: ABC

Explanation:

Reference: <https://community.snowflake.com/s/question/0D50Z00009C3VIMSAV/zero-copy-cloning>

NEW QUESTION 60

- (Exam Topic 1)

When can a Virtual Warehouse start running queries?

- A. 12am-5am
- B. Only during administrator defined time slots
- C. When its provisioning is complete
- D. After replication

Answer: C

Explanation:

<https://docs.snowflake.com/en/user-guide/warehouses-overview.html>

NEW QUESTION 61

- (Exam Topic 1)

True or False: When data share is established between a Data Provider and a data Consumer, the Data Consumer can extend that data share to other Data Consumers.

- A. True
- B. False

Answer: B

Explanation:

Reference: <https://docs.snowflake.com/en/user-guide/data-sharing-intro.html>

NEW QUESTION 63

- (Exam Topic 1)

The PUT command: (Choose two.)

- A. Automatically creates a File Format object
- B. Automatically uses the last Stage created
- C. Automatically compresses files using Gzip
- D. Automatically encrypts files

Answer: CD

Explanation:

Reference: <https://docs.snowflake.com/en/sql-reference/sql/put.html>

NEW QUESTION 67

- (Exam Topic 1)

When scaling up Virtual Warehouse by increasing Virtual Warehouse t-shirt size, you are primarily scaling for improved: Select one.

- A. Concurrency
- B. Performance

Answer: B

Explanation:

Reference:

<https://docs.snowflake.com/en/user-guide/warehouses-considerations.html#warehouse-resizing-improves-perfor>

NEW QUESTION 70

- (Exam Topic 1)

What is the recommended Snowflake data type to store semi-structured data like JSON?

- A. VARCHAR
- B. RAW
- C. LOB
- D. VARIANT

Answer: D

Explanation:

Reference: <https://docs.snowflake.com/en/sql-reference/data-types-semistructured.html>

NEW QUESTION 73

- (Exam Topic 1)

True or False: It is possible to query data from an Internal or named External stage without loading the data into Snowflake.

- A. True
- B. False

Answer: A

NEW QUESTION 75

- (Exam Topic 1)

True or False: You can resize a Virtual Warehouse while queries are running.

- A. True
- B. False

Answer: A

Explanation:

Reference: <https://docs.snowflake.com/en/user-guide/warehouses-tasks.html>

NEW QUESTION 76

- (Exam Topic 1)

A Virtual Warehouse's auto-suspend and auto-resume settings apply to:

- A. The primary duster in the virtual warehouse
- B. The entire Virtual Warehouse
- C. The database the Virtual Warehouse resides in
- D. The queries currently being run by the Virtual Warehouse

Answer: B

Explanation:

Reference: <https://docs.snowflake.com/en/user-guide/warehouses-overview.html>

NEW QUESTION 78

- (Exam Topic 1)

True or False: Reader Accounts incur no additional Compute costs to the Data Provider since they are simply reading the shared data without making changes.

- A. True
- B. False

Answer: B

Explanation:

Reference: <https://interworks.com/blog/bdu/2020/02/05/zero-to-snowflake-secure-data-sharing/>

NEW QUESTION 79

- (Exam Topic 1)

Which of the following languages can be used to implement Snowflake User Defined Functions (UDFs)? Choose 2 answers

- A. Java
- B. JavaScript
- C. SQL
- D. Python

Answer: BC

Explanation:

Reference: <https://docs.snowflake.com/en/sql-reference/user-defined-functions.html>

NEW QUESTION 84

- (Exam Topic 1)

Which formats are supported for unloading data from Snowflake? Choose 2 answers

- A. Delimited (CSV, TSV, etc.)
- B. Avro
- C. JSON
- D. ORC

Answer: AC

Explanation:

Reference: <https://docs.snowflake.com/en/user-guide/data-unload-prepare.html>

NEW QUESTION 87

- (Exam Topic 1)

To run a Multi-Cluster Warehouse in auto-scale mode, a user would:

- A. Configure the Maximum Clusters setting to “Auto-Scale”
- B. Set the Warehouse type to “Auto”
- C. Set the Minimum Clusters and Maximum Clusters settings to the same value
- D. Set the Minimum Clusters and Maximum Clusters settings to the different values

Answer: D

Explanation:

Reference: https://help.pentaho.com/Documentation/9.1/Products/Modify_Snowflake_warehouse

NEW QUESTION 90

- (Exam Topic 1)

Snowflake provides two mechanisms to reduce data storage costs for short-lived tables. These mechanisms are:
Choose 2 answers

- A. Temporary Tables
- B. Transient Tables
- C. Provisional Tables
- D. Permanent Tables

Answer: AB

Explanation:

Reference: <https://docs.snowflake.com/en/user-guide/tables-storage-considerations.html>

NEW QUESTION 93

- (Exam Topic 1)

When should you consider disabling auto-suspend for a Virtual Warehouse? Choose 2 answers

- A. When users will be using compute at different times throughout a 24/7 period
- B. When managing a steady workload
- C. When the compute must be available with no delay or lag time
- D. When you don't want to have to manually turn on the Warehouse each time a user needs it

Answer: BC

Explanation:

Reference: <https://docs.snowflake.com/en/user-guide/warehouses-considerations.html>

NEW QUESTION 95

- (Exam Topic 1)

True or False: You can query the files in an External Stage directly without having to load the data into a table.

- A. True
- B. False

Answer: A

Explanation:

Reference: <https://docs.snowflake.com/en/user-guide/tables-external-intro.html>

External tables are read-only, therefore no DML operations can be performed on them; however, external tables can be used for query and join operations. Views can be created against external tables.

NEW QUESTION 100

- (Exam Topic 1)

When creating a user it is advisable to:
Choose 2 answers

- A. Set the user to be initially disabled
- B. Force an immediate password change
- C. Set a default role for the user
- D. Set the number of minutes to unlock to 15 minutes
- E. Set the users access to expire within a specified timeframe

Answer: BC

NEW QUESTION 103

- (Exam Topic 1)

True or False: The COPY command must specify a File Format in order to execute.

- A. True
- B. False

Answer: B

Explanation:

Create Stage:

<https://docs.snowflake.com/en/sql-reference/sql/create-stage.html> Create Table (STAGE_FILE_FORMAT option): <https://docs.snowflake.com/en/sql-reference/sql/create-table.html> Copy Into:

<https://docs.snowflake.com/en/sql-reference/sql/copy-into-table.html>

NEW QUESTION 106

- (Exam Topic 1)

True or False: When you create a custom role, it is a practice to immediately grant that role to ACCOUNTADMIN.

- A. True
- B. False

Answer: B

NEW QUESTION 107

- (Exam Topic 1)

True or False: Snowpipe via RFST API can only reference External Stages as source.

- A. True
- B. False

Answer: B

Explanation:

Reference: <https://community.snowflake.com/s/article/Making-Transient-table-by-Default>

NEW QUESTION 112

- (Exam Topic 1)

True or False: You can define multiple columns within a clustering key on a table.

- A. True
- B. False

Answer: A

Explanation:

Reference: <https://docs.snowflake.com/en/user-guide/tables-clustering-keys.html>

NEW QUESTION 114

- (Exam Topic 1)

Snowflake recommends, as a minimize, that all users with the following roles(s) should be enrolled in Multi-Factor Authentication (MFA):
Select one:

- A. SECURITYADMIN, ACCOUNTADMIN, PUBLIC, SYSADMIN
- B. SECURITYADMIN ACCOUNTADMIN, SYSADMIN
- C. SECURITYADMIN, ACCOUNTADMIN
- D. ACCOUNTADMIN

Answer: D

Explanation:

Reference: <https://docs.snowflake.com/en/user-guide/security-mfa.html>

NEW QUESTION 116

- (Exam Topic 1)

Each incremental increase in Virtual Warehouse size (e.g. Medium to Large) generally results in what? Select one.

- A. More micro-partitions
- B. Better query scheduling
- C. Double the numbers of servers In the compute duster
- D. Higher storage costs

Answer: C

NEW QUESTION 121

- (Exam Topic 1)

What is the minimum duration charged when starting a virtual warehouse?

- A. 1 second
- B. 1 minute
- C. 1 hour
- D. 1 day

Answer: B

NEW QUESTION 124

- (Exam Topic 1)

The number of queries that a Virtual Warehouse can concurrently process is determined by: Choose 2 answers

- A. The complexity of each query
- B. The CONCURRENT_QUERY_UMIT parameter set on the Snowflake account
- C. The size of the data required for each query
- D. The tool that s executing the query

Answer: AC

Explanation:

Reference: <https://docs.snowflake.com/en/user-guide/warehouses-overview.html>

NEW QUESTION 128

- (Exam Topic 1)

True or False: A Virtual Warehouse consumes Snowflake credits even when inactive.

- A. True
- B. False

Answer: B

Explanation:

Reference: <https://docs.snowflake.com/en/user-guide/warehouses-multicloud.html>

NEW QUESTION 131

- (Exam Topic 1)

True or false: it is best practice to define a clustering key on every table.

- A. True
- B. False

Answer: B

Explanation:

Reference: <https://dwgeek.com/how-to-create-snowflake-clustered-tables-examples.html/>

NEW QUESTION 133

- (Exam Topic 1)

Snowflake is designed for which type of workloads? (Choose two.)

- A. OLAP (Analytics) workloads
- B. OLTP (Transactional) workloads
- C. Concurrent workloads
- D. On-premise workloads

Answer: AC

Explanation:

Reference: <https://blog.couchbase.com/its-the-workload-stupid/>
<https://www.quora.com/Can-Snowflake-be-used-for-an-OLTP-system-or-is-it-only-best-suited-for-warehousing>

NEW QUESTION 134

- (Exam Topic 1)

True or False: When Snowflake is configured to use Single Sign-on (sso), Snowflake receive the usernames and credentials from the sso service and loads them into the customer's Snowflake account.

- A. True
- B. false:

Answer: B

Explanation:

Reference: <https://docs.snowflake.com/en/user-guide/admin-security-fed-auth-configure-snowflake.html>

NEW QUESTION 136

- (Exam Topic 1)

What command is used to load files into an Internal Stage within Snowflake? Select one.

- A. PUT
- B. COPY INTO
- C. TRANSFER
- D. INSERT

Answer: A

Explanation:

You must specify an internal stage in the PUT command when uploading files to Snowflake. You must specify the same stage in the COPY INTO <table> command when loading data into a table from the staged files.

NEW QUESTION 137

- (Exam Topic 1)

What is the maximum compressed row size in Snowflake?

- A. 8KB
- B. 16MB
- C. 50MB
- D. 4000GB

Answer: B

Explanation:

MAX size for compressed data for semi-structured data type is also 16 MB. That means if our table has a semi-structured data type column with 16MB data other columns will have NULL data.

NEW QUESTION 140

- (Exam Topic 1)

What happens when a Data Provider revokes privileges to a Share on an object in their source database?

- A. The object immediately becomes unavailable for all Data Consumers
- B. Any additional data arriving after this point in time will not be visible to Data Consumers
- C. The Data Consumers stop seeing data updates and become responsible for storage charges for the object
- D. A static copy of the object at the time the privilege was revoked is created In the Data Consumers' accounts

Answer: A

NEW QUESTION 145

- (Exam Topic 1)

True or False: Snowflake charges additional fees to Data providers for each share they create.

- A. True
- B. False

Answer: B

Explanation:

"The costs for sharing data with Snowflake are minimal and straightforward. Data providers simply pay Snowflake for the data they store, and data consumers pay for the compute resources their queries consume."

NEW QUESTION 146

- (Exam Topic 1)

Account-level storage usage can be monitored via:

- A. The snowflake wet Interface (UI) in the Databases section.
- B. The Snowflake web interface (UI) in the Account -> Billing a usage section
- C. The Information Schema -> ACCOUNT_USAGE_HISTORY View
- D. The Account usage Schema - > ACCOUNT_USAGE_METRICS View

Answer: B

Explanation:

Reference: <https://docs.snowflake.com/en/user-guide/admin-usage-billing.html>

NEW QUESTION 147

- (Exam Topic 2)

Where would a Snowflake user find information about query activity from 90 days ago?

- A. Account___usage . query history view
- B. account___usage.query___history___archive View
- C. information___schema . cruery_history view
- D. information___schema - query history_by_ses s i on view

Answer: A

NEW QUESTION 150

- (Exam Topic 2)

How often are encryption keys automatically rotated by Snowflake?

- A. 30 Days
- B. 60 Days
- C. 90 Days
- D. 365 Days

Answer: A

Explanation:

All Snowflake-managed keys are automatically rotated by Snowflake when they are more than 30 days old. Active keys are retired, and new keys are created. When Snowflake determines the retired key is no longer needed, the key is automatically destroyed.

<https://docs.snowflake.com/en/user-guide/security-encryption-manage.html#:~:text=All%20Snowflake%2Dman>

NEW QUESTION 153

- (Exam Topic 2)

Which of the following Snowflake features provide continuous data protection automatically? (Select TWO).

- A. Internal stages
- B. Incremental backups
- C. Time Travel
- D. Zero-copy clones
- E. Fail-safe

Answer: CE

Explanation:

Time travel and fail safe are the two continuous data protection features support the recovery of data automatically.

Snowflake provides powerful CDP features for ensuring the maintenance and availability of your historical data (i.e. data that has been changed or deleted):

- Querying, cloning, and restoring historical data in tables, schemas, and databases for up to 90 days through Snowflake Time Travel.
- Disaster recovery of historical data (by Snowflake) through Snowflake Fail-safe. <https://docs.snowflake.com/en/user-guide/data-availability.html>

NEW QUESTION 154

- (Exam Topic 2)

Which of the following are benefits of micro-partitioning? (Select TWO)

- A. Micro-partitions cannot overlap in their range of values
- B. Micro-partitions are immutable objects that support the use of Time Travel.
- C. Micro-partitions can reduce the amount of I/O from object storage to virtual warehouses
- D. Rows are automatically stored in sorted order within micro-partitions
- E. Micro-partitions can be defined on a schema-by-schema basis

Answer: AD

Explanation:

<https://docs.snowflake.com/en/user-guide/tables-clustering-micropartitions.html>

NEW QUESTION 158

- (Exam Topic 2)

True or False: Loading data into Snowflake requires that source data files be no larger than 16MB.

- A. True
- B. False

Answer: B

Explanation:

By default, COPY INTO location statements separate table data into a set of output files to take advantage of parallel operations. The maximum size for each file is set using the MAX_FILE_SIZE copy option. The default value is 16777216 (16 MB) but can be increased to accommodate larger files. The maximum file size supported is 5 GB for Amazon S3, Google Cloud Storage, or Microsoft Azure stages. To unload data to a single output file (at the potential cost of decreased performance), specify the SINGLE = true copy option in your statement. You can optionally specify a name for the file in the path.

NEW QUESTION 161

- (Exam Topic 2)

During periods of warehouse contention which parameter controls the maximum length of time a warehouse will hold a query for processing?

- A. STATEMENT_TIMEOUT_IN_SECONDS
- B. STATEMENT_QUEUED_TIMEOUT_IN_SECONDS
- C. MAX_CONCURRENCY_LEVEL
- D. QUERY_TIMEOUT_IN_SECONDS

Answer: B

Explanation:

The parameter STATEMENT_QUEUED_TIMEOUT_IN_SECONDS

sets the limit for a query to wait in

the queue in order to get its chance of running on the warehouse. The query will quit after reaching this limit. By default, the value of this parameter is 0 which mean the queries will wait indefinitely in the waiting queue

<https://community.snowflake.com/s/article/Warehouse-Concurrency-and-Statement-Timeout-Parameters#:~:text=>

NEW QUESTION 163

- (Exam Topic 2)

Which statement about billing applies to Snowflake credits?

- A. Credits are billed per-minute with a 60-minute minimum
- B. Credits are used to pay for cloud data storage usage
- C. Credits are consumed based on the number of credits billed for each hour that a warehouse runs
- D. Credits are consumed based on the warehouse size and the time the warehouse is running

Answer: D

Explanation:

Snowflake credits are used to pay for the consumption of resources on Snowflake. A Snowflake credit is a unit of measure, and it is consumed only when a customer is using resources, such as when a virtual warehouse is running, the cloud services layer is performing work, or serverless features are used.
<https://docs.snowflake.com/en/user-guide/what-are-credits.html>

NEW QUESTION 165

- (Exam Topic 2)

A developer is granted ownership of a table that has a masking policy. The developer's role is not able to see the masked data. Will the developer be able to modify the table to read the masked data?

- A. Yes, because a table owner has full control and can unset masking policies.
- B. Yes, because masking policies only apply to cloned tables.
- C. No, because masking policies must always reference specific access roles.
- D. No, because ownership of a table does not include the ability to change masking policies

Answer: A

NEW QUESTION 167

- (Exam Topic 2)

What feature can be used to reorganize a very large table on one or more columns?

- A. Micro-partitions
- B. Clustering keys
- C. Key partitions
- D. Clustered partitions

Answer: B

Explanation:

<https://docs.snowflake.com/en/user-guide/tables-clustering-keys.html>

NEW QUESTION 171

- (Exam Topic 2)

When reviewing the load for a warehouse using the load monitoring chart, the chart indicates that a high volume of Queries are always queuing in the warehouse. According to recommended best practice, what should be done to reduce the Queue volume? (Select TWO).

- A. Use multi-clustered warehousing to scale out warehouse capacity.
- B. Scale up the warehouse size to allow Queries to execute faster.
- C. Stop and start the warehouse to clear the queued queries
- D. Migrate some queries to a new warehouse to reduce load
- E. Limit user access to the warehouse so fewer queries are run against it.

Answer: AD

NEW QUESTION 172

- (Exam Topic 2)

True or False: A Virtual Warehouse can be resized while suspended.

- A. True
- B. False

Answer: A

Explanation:

Reference:

<https://docs.snowflake.com/en/user-guide/warehouses-tasks.html#effects-of-resizing-a-suspended-warehouse>

NEW QUESTION 177

- (Exam Topic 2)

True or False: It is possible for a user to run a query against the query result cache without requiring an active Warehouse.

- A. True
- B. False

Answer: A

Explanation:

Query result cache is all about fetching the data from cloud services layer and saving the cost by not running the virtual warehouse.

NEW QUESTION 179

- (Exam Topic 2)

Which copy INTO command outputs the data into one file?

- A. SINGLE=TRUE
- B. MAX_FILE_NUMBER=1
- C. FILE_NUMBER=1
- D. MULTIPLE=FAISE

Answer: A

NEW QUESTION 184

- (Exam Topic 2)

What is the purpose of an External Function?

- A. To call code that executes outside of Snowflake
- B. To run a function in another Snowflake database
- C. To share data in Snowflake with external parties
- D. To ingest data from on-premises data sources

Answer: A

Explanation:

<https://docs.snowflake.com/en/sql-reference/external-functions.html>

NEW QUESTION 185

- (Exam Topic 2)

Which of the following conditions must be met in order to return results from the results cache? (Select TWO).

- A. The user has the appropriate privileges on the objects associated with the query
- B. Micro-partitions have been reclustered since the query was last run
- C. The new query is run using the same virtual warehouse as the previous query
- D. The query includes a User Defined Function (UDF)
- E. The query has been run within 24 hours of the previously-run query

Answer: AE

NEW QUESTION 189

- (Exam Topic 2)

Which command is used to unload data from a Snowflake table into a file in a stage?

- A. COPY INTO
- B. GET
- C. WRITE
- D. EXTRACT INTO

Answer: A

Explanation:

<https://docs.snowflake.com/en/user-guide/data-unload-snowflake.html#:~:text=Your%20User%20Stage-,Use%2>

NEW QUESTION 191

- (Exam Topic 2)

Which semi-structured file formats are supported when unloading data from a table? (Select TWO).

- A. ORC
- B. XML
- C. Avro
- D. Parquet
- E. JSON

Answer: DE

Explanation:

Semi-structured JSON, Parquet

<https://docs.snowflake.com/en/user-guide/data-unload-prepare.html#:~:text=Supported%20File%20Formats,-Th>

NEW QUESTION 196

- (Exam Topic 2)

A user unloaded a Snowflake table called mytable to an internal stage called mystage. Which command can be used to view the list of files that has been uploaded to the staged?

- A. list @mytable;
- B. list @%mytable;
- C. list @ %m.ystage;
- D. list @mystage;

Answer: D

NEW QUESTION 200

- (Exam Topic 2)

A user has unloaded data from Snowflake to a stage

Which SQL command should be used to validate which data was loaded into the stage?

- A. list @file__stage

- B. show @file__stage
- C. view @file__stage
- D. verify @file__stage

Answer: A

NEW QUESTION 201

- (Exam Topic 2)

Which of the following objects can be shared through secure data sharing?

- A. Masking policy
- B. Stored procedure
- C. Task
- D. External table

Answer: D

Explanation:

Secure Data Sharing enables sharing selected objects in a database in your account with other Snowflake accounts. The following Snowflake database objects can be shared:

- > Tables
- > External tables
- > Secure views
- > Secure materialized views
- > Secure UDFs

Snowflake enables the sharing of databases through shares, which are created by data providers and “imported” by data consumers.

<https://docs.snowflake.com/en/user-guide/data-sharing-intro.html#:~:text=Secure%20Data%20Sharing%20enab>

NEW QUESTION 205

- (Exam Topic 2)

When reviewing a query profile, what is a symptom that a query is too large to fit into the memory?

- A. A single join node uses more than 50% of the query time
- B. Partitions scanned is equal to partitions total
- C. An AggregateOperacor node is present
- D. The query is spilling to remote storage

Answer: D

NEW QUESTION 207

- (Exam Topic 2)

What are the default Time Travel and Fail-safe retention periods for transient tables?

- A. Time Travel - 1 da
- B. Fail-safe - 1 day
- C. Time Travel - 0 day
- D. Fail-safe - 1 day
- E. Time Travel - 1 da
- F. Fail-safe - 0 days
- G. Transient tables are retained in neither Fail-safe nor Time Travel

Answer: C

Explanation:

<https://docs.snowflake.com/en/user-guide/data-cdp-storage-costs.html#:~:text=Temporary%20and%20Transient>

NEW QUESTION 212

- (Exam Topic 2)

Which command can be used to stage local files from which Snowflake interface?

- A. SnowSQL
- B. Snowflake classic web interface (UI)
- C. Snowsight
- D. .NET driver

Answer: A

Explanation:

<https://docs.snowflake.com/en/user-guide/snowsql-use.html>

NEW QUESTION 215

- (Exam Topic 2)

True or False: Fail-safe can be disabled within a Snowflake account.

- A. True
- B. False

Answer: B

Explanation:

Reference: <https://docs.snowflake.com/en/user-guide/data-failsafe.html>

Separate and distinct from Time Travel, Fail-safe ensures historical data is protected in the event of a system failure or other catastrophic event, e.g. a hardware failure or security breach. Fail safe feature cannot be enabled or disabled from the user end .

NEW QUESTION 217

- (Exam Topic 2)

What is the default character set used when loading CSV files into Snowflake?

- A. UTF-8
- B. UTF-16
- C. ISO S859-1
- D. ANSI_X3.A

Answer: A

Explanation:

[**NEW QUESTION 219**](https://docs.snowflake.com/en/user-guide/intro-summary-loading.html#:~:text=For%20delimited%20files%20(,text=For%20delimited%20files%20(For delimited files (CSV, TSV, etc.), the default character set is UTF-8. To use any other characters sets, you must explicitly specify the encoding to use for loading. For the list of supported character sets, see Supported Character Sets for Delimited Files (in this topic).</p></div><div data-bbox=)

- (Exam Topic 2)

Which of the following compute resources or features are managed by Snowflake? (Select TWO).

- A. Execute a COPY command
- B. Updating data
- C. Snowpipe
- D. AUTOMATIC__CLUSTERING
- E. Scaling up a warehouse

Answer: AD

NEW QUESTION 221

- (Exam Topic 2)

What can be used to view warehouse usage over time? (Select Two).

- A. The load HISTORY view
- B. The Query history view
- C. The show warehouses command
- D. The WAREHOUSE_METERING HISTORY View
- E. The billing and usage tab in the Snowflake web UI

Answer: DE

NEW QUESTION 224

- (Exam Topic 2)

Which of the following describes how clustering keys work in Snowflake?

- A. Clustering keys update the micro-partitions in place with a full sort, and impact the DML operations.
- B. Clustering keys sort the designated columns over time, without blocking DML operations
- C. Clustering keys create a distributed, parallel data structure of pointers to a table's rows and columns
- D. Clustering keys establish a hashed key on each node of a virtual warehouse to optimize joins at run-time

Answer: B

NEW QUESTION 229

- (Exam Topic 2)

Which is the MINIMUM required Snowflake edition that a user must have if they want to use AWS/Azure Privatelink or Google Cloud Private Service Connect?

- A. Standard
- B. Premium
- C. Enterprise
- D. Business Critical

Answer: D

Explanation:

<https://docs.snowflake.com/en/user-guide/privatelink-azure.html>

NEW QUESTION 234

- (Exam Topic 2)

True or False: A 4X-Large Warehouse may, at times, take longer to provision than a X-Small Warehouse.

- A. True
- B. False

Answer: A

Explanation:

You can experiment the same with snowflake UI.

NEW QUESTION 235

- (Exam Topic 2)

A user needs to create a materialized view in the schema MYDB.MYSCHEMA. Which statements will provide this access?

- A. GRANT ROLE MYROLE TO USER USER1;CREATE MATERIALIZED VIEW ON SCHEMA MYDB.MYSCHEMA TO ROLE MYROLE;
- B. GRANT ROLE MYROLE TO USER USER1;CREATE MATERIALIZED VIEW ON SCHEMA MYDB.MYSCHEMA TO USER USER1;
- C. GRANT ROLE MYROLE TO USER USER1;CREATE MATERIALIZED VIEW ON SCHEMA MYDB.MYSCHEMA TO USER1;
- D. GRANT ROLE MYROLE TO USER USER1;CREATE MATERIALIZED VIEW ON SCHEMA MYDB.MYSCHEMA TO MYROLE;

Answer: B

NEW QUESTION 238

- (Exam Topic 2)

Which data type can be used to store geospatial data in Snowflake?

- A. Variant
- B. Object
- C. Geometry
- D. Geography

Answer: D

Explanation:

<https://docs.snowflake.com/en/sql-reference/data-types-geospatial.html#:~:text=have%20SRID%3D4326.-,Geos>

NEW QUESTION 240

- (Exam Topic 2)

Which of the following are best practice recommendations that should be considered when loading data into Snowflake? (Select TWO).

- A. Load files that are approximately 25 MB or smaller.
- B. Remove all dates and timestamps.
- C. Load files that are approximately 100-250 MB (or larger)
- D. Avoid using embedded characters such as commas for numeric data types
- E. Remove semi-structured data types

Answer: CD

Explanation:

<https://docs.snowflake.com/en/user-guide/data-load-considerations-prepare.html>

NEW QUESTION 242

- (Exam Topic 2)

What is a key feature of Snowflake architecture?

- A. Zero-copy cloning creates a mirror copy of a database that updates with the original
- B. Software updates are automatically applied on a quarterly basis
- C. Snowflake eliminates resource contention with its virtual warehouse implementation
- D. Multi-cluster warehouses allow users to run a query that spans across multiple clusters
- E. Snowflake automatically sorts DATE columns during ingest for fast retrieval by date

Answer: D

NEW QUESTION 247

- (Exam Topic 2)

A virtual warehouse's auto-suspend and auto-resume settings apply to which of the following?

- A. The primary cluster in the virtual warehouse
- B. The entire virtual warehouse
- C. The database in which the virtual warehouse resides
- D. The Queries currently being run on the virtual warehouse

Answer: B

Explanation:

<https://docs.snowflake.com/en/user-guide/warehouses-overview.html#:~:text=Similarly%2C%20auto%2Dresum>

NEW QUESTION 248

- (Exam Topic 2)

In the query profiler view for a query, which components represent areas that can be used to help optimize query performance? (Select TWO)

- A. Bytes scanned
- B. Bytes sent over the network
- C. Number of partitions scanned
- D. Percentage scanned from cache
- E. External bytes scanned

Answer: AC

NEW QUESTION 250

- (Exam Topic 2)

When unloading to a stage, which of the following is a recommended practice or approach?

- A. Set SINGLE: = true for larger files
- B. Use OBJECT_CONSTRUCT (*) when using Parquet
- C. Avoid the use of the CAST function
- D. Define an individual file format

Answer: C

NEW QUESTION 254

- (Exam Topic 2)

Which Snowflake feature is used for both querying and restoring data?

- A. Cluster keys
- B. Time Travel
- C. Fail-safe
- D. Cloning

Answer: B

Explanation:

[https://docs.snowflake.com/en/user-guide/data-availability.html#:~:text=Snowflake%20provides%20powerful%](https://docs.snowflake.com/en/user-guide/data-availability.html#:~:text=Snowflake%20provides%20powerful%20)

NEW QUESTION 258

- (Exam Topic 2)

Which feature is only available in the Enterprise or higher editions of Snowflake?

- A. Column-level security
- B. SOC 2 type II certification
- C. Multi-factor Authentication (MFA)
- D. Object-level access control

Answer: A

Explanation:

<https://docs.snowflake.com/en/user-guide/intro-editions.html>

NEW QUESTION 259

- (Exam Topic 2)

Which data types does Snowflake support when querying semi-structured data? (Select TWO)

- A. VARIANT
- B. ARRAY
- C. VARCHAR
- D. XML
- E. BLOB

Answer: AB

Explanation:

<https://docs.snowflake.com/en/user-guide/semistructured-intro.html#label-loading-semi-structured-data>

A VARIANT stores semi-structured data in Snowflake. It can store a value of any other type, including OBJECT and ARRAY.

The maximum length of a VARIANT is 16 MB.

A Snowflake ARRAY is similar to an array in many other programming languages. An ARRAY contains 0 or more pieces of data. Each element is accessed by specifying its position in the array.

NEW QUESTION 264

- (Exam Topic 2)

What transformations are supported in a CREATE PIPE ... AS COPY ... FROM (....) statement? (Select TWO.)

- A. Data can be filtered by an optional where clause
- B. Incoming data can be joined with other tables
- C. Columns can be reordered
- D. Columns can be omitted
- E. Row level access can be defined

Answer: CD

NEW QUESTION 267

- (Exam Topic 3)

Which methods can be used to delete staged files from a Snowflake stage? (Choose two.)

- A. Use the DROP <file> command after the load completes.
- B. Specify the TEMPORARY option when creating the file format.
- C. Specify the PURGE copy option in the COPY INTO <table> command.
- D. Use the REMOVE command after the load completes.
- E. Use the DELETE LOAD HISTORY command after the load completes.

Answer: CD

NEW QUESTION 272

- (Exam Topic 3)

Which command should be used to load data from a file, located in an external stage, into a table in Snowflake?

- A. INSERT
- B. PUT
- C. GET
- D. COPY

Answer: D

NEW QUESTION 277

- (Exam Topic 3)

Where is Snowflake metadata stored?

- A. Within the data files
- B. In the virtual warehouse layer
- C. In the cloud services layer
- D. In the remote storage layer

Answer: B

Explanation:

Reference:

<https://docs.snowflake.com/en/user-guide/querying-metadata.html#:~:text=Snowflake%20automatically%20gen>

NEW QUESTION 278

- (Exam Topic 3)

Which of the following features, associated with Continuous Data Protection (CDP), require additional Snowflake-provided data storage? (Choose two.)

- A. Tri-Secret Secure
- B. Time Travel
- C. Fail-safe
- D. Data encryption
- E. External stages

Answer: BC

NEW QUESTION 281

- (Exam Topic 3)

The is the minimum Fail-safe retention time period for transient tables?

- A. 1 day
- B. 7 days
- C. 12 hours
- D. 0 days

Answer: D

NEW QUESTION 284

- (Exam Topic 3)

A single user of a virtual warehouse has set the warehouse to auto-resume and auto-suspend after 10 minutes. The warehouse is currently suspended and the user performs the following actions:

- * 1. Runs a query that takes 3 minutes to complete
- * 2. Leaves for 15 minutes
- * 3. Returns and runs a query that takes 10 seconds to complete
- * 4. Manually suspends the warehouse as soon as the last query was completed

When the user returns, how much billable compute time will have been consumed?

- A. 4 minutes
- B. 10 minutes
- C. 14 minutes
- D. 24 minutes

Answer: C

NEW QUESTION 285

- (Exam Topic 3)

Which Snowflake function will interpret an input string as a JSON document, and produce a VARIANT value?

- A. parse_json()
- B. json_extract_path_text()
- C. object_construct()
- D. flatten

Answer: B

NEW QUESTION 289

- (Exam Topic 3)

What is the minimum Snowflake edition that has column-level security enabled?

- A. Standard
- B. Enterprise
- C. Business Critical
- D. Virtual Private Snowflake

Answer: B

NEW QUESTION 291

- (Exam Topic 3)

What happens to the shared objects for users in a consumer account from a share, once a database has been created in that account?

- A. The shared objects are transferred.
- B. The shared objects are copied.
- C. The shared objects become accessible.
- D. The shared objects can be re-shared.

Answer: B

NEW QUESTION 294

- (Exam Topic 3)

Which of the following is the Snowflake Account_Usage.Metering_History view used for?

- A. Gathering the hourly credit usage for an account
- B. Compiling an account's average cloud services cost over the previous month
- C. Summarizing the throughput of Snowpipe costs for an account
- D. Calculating the funds left on an account's contract

Answer: A

NEW QUESTION 299

- (Exam Topic 3)

What is the MINIMUM Snowflake edition required to use the periodic rekeying of micro-partitions?

- A. Enterprise
- B. Business Critical
- C. Standard
- D. Virtual Private Snowflake

Answer: B

Explanation:

Reference: <https://docs.snowflake.com/en/user-guide/intro-editions.html#business-critical-edition>

NEW QUESTION 302

- (Exam Topic 3)

What effect does WAIT_FOR_COMPLETION = TRUE have when running an ALTER WAREHOUSE command and changing the warehouse size?

- A. The warehouse size does not change until all queries currently running in the warehouse have completed.
- B. The warehouse size does not change until all queries currently in the warehouse queue have completed.
- C. The warehouse size does not change until the warehouse is suspended and restarted.
- D. It does not return from the command until the warehouse has finished changing its size.

Answer: D

NEW QUESTION 304

- (Exam Topic 3)

The bulk data load history that is available upon completion of the COPY statement is stored where and for how long?

- A. In the metadata of the target table for 14 days
- B. In the metadata of the pipe for 14 days
- C. In the metadata of the target table for 64 days
- D. In the metadata of the pipe for 64 days

Answer: A

NEW QUESTION 309

- (Exam Topic 3)

Where can a user find and review the failed logins of a specific user for the past 30 days?

- A. The USERS view in ACCOUNT_USAGE
- B. The LOGIN_HISTORY view in ACCOUNT_USAGE
- C. The ACCESS_HISTORY view in ACCOUNT_USAGE
- D. The SESSIONS view in ACCOUNT_USAGE

Answer: B

NEW QUESTION 314

- (Exam Topic 3)

What COPY INTO SQL command should be used to unload data into multiple files?

- A. SINGLE=TRUE
- B. MULTIPLE=TRUE
- C. MULTIPLE=FALSE
- D. SINGLE=FALSE

Answer: C

NEW QUESTION 318

- (Exam Topic 3)

How often are the Account and Table master keys automatically rotated by Snowflake?

- A. 30 Days
- B. 60 Days
- C. 90 Days
- D. 365 Days.

Answer: D

NEW QUESTION 320

- (Exam Topic 3)

What is the MINIMUM edition of Snowflake that is required to use a SCIM security integration?

- A. Business Critical Edition
- B. Standard Edition
- C. Virtual Private Snowflake (VPS)
- D. Enterprise Edition

Answer: D

NEW QUESTION 321

- (Exam Topic 3)

The first user assigned to a new account, ACCOUNTADMIN, should create at least one additional user with which administrative privilege?

- A. USERADMIN
- B. PUBLIC
- C. ORGADMIN
- D. SYSADMIN

Answer: D

NEW QUESTION 325

- (Exam Topic 3)

Credit charges for Snowflake virtual warehouses are calculated based on which of the following considerations? (Choose two.)

- A. The number of queries executed
- B. The number of active users assigned to the warehouse
- C. The size of the virtual warehouse
- D. The length of time the warehouse is running
- E. The duration of the queries that are executed

Answer: AD

NEW QUESTION 328

- (Exam Topic 3)

Query parsing and compilation occurs in which architecture layer of the Snowflake Cloud Data Platform?

- A. Cloud services layer
- B. Compute layer
- C. Storage layer
- D. Cloud agnostic layer

Answer: B

Explanation:

Reference: <https://www.projectpro.io/article/snowflake-architecture-what-does-snowflake-do/556>

NEW QUESTION 329

- (Exam Topic 3)

When publishing a Snowflake Data Marketplace listing into a remote region what should be taken into consideration? (Choose two.)

- A. There is no need to have a Snowflake account in the target region, a share will be created for each user.
- B. The listing is replicated into all selected regions automatically, the data is not.
- C. The user must have the ORGADMIN role available in at least one account to link accounts for replication.
- D. Shares attached to listings in remote regions can be viewed from any account in an organization.
- E. For a standard listing the user can wait until the first customer requests the data before replicating it to the target region.

Answer: AC

NEW QUESTION 333

- (Exam Topic 3)

What is cached during a query on a virtual warehouse?

- A. All columns in a micro-partition
- B. Any columns accessed during the query
- C. The columns in the result set of the query
- D. All rows accessed during the query

Answer: B

NEW QUESTION 337

- (Exam Topic 3)

Which of the following are characteristics of Snowflake virtual warehouses? (Choose two.)

- A. Auto-resume applies only to the last warehouse that was started in a multi-cluster warehouse.
- B. The ability to auto-suspend a warehouse is only available in the Enterprise edition or above.
- C. SnowSQL supports both a configuration file and a command line option for specifying a default warehouse.
- D. A user cannot specify a default warehouse when using the ODBC driver.
- E. The default virtual warehouse size can be changed at any time.

Answer: A

NEW QUESTION 342

- (Exam Topic 3)

A company needs to allow some users to see Personally Identifiable Information (PII) while limiting other users from seeing the full value of the PII. Which Snowflake feature will support this?

- A. Row access policies
- B. Data masking policies
- C. Data encryption
- D. Role based access control

Answer: B

NEW QUESTION 345

- (Exam Topic 3)

Which tasks are performed in the Snowflake Cloud Services layer? (Choose two.)

- A. Management of metadata
- B. Computing the data
- C. Maintaining Availability Zones
- D. Infrastructure security
- E. Parsing and optimizing queries

Answer: AE

NEW QUESTION 349

- (Exam Topic 3)

User INQUISITIVE_PERSON has been granted the role DATA_SCIENCE. The role DATA_SCIENCE has privileges OWNERSHIP on the schema MARKETING of the database ANALYTICS_DW.

Which command will show all privileges granted to that schema?

- A. SHOW GRANTS ON ROLE DATA_SCIENCE
- B. SHOW GRANTS ON SCHEMA ANALYTICS_DW.MARKETING
- C. SHOW GRANTS TO USER INQUISITIVE_PERSON
- D. SHOW GRANTS OF ROLE DATA_SCIENCE

Answer: B

NEW QUESTION 354

- (Exam Topic 3)

Network policies can be applied to which of the following Snowflake objects? (Choose two.)

- A. Roles
- B. Databases
- C. Warehouses
- D. Users
- E. Accounts

Answer: AD

NEW QUESTION 355

- (Exam Topic 3)

A Snowflake user executed a query and received the results. Another user executed the same query 4 hours later. The data had not changed. What will occur?

- A. No virtual warehouse will be used, data will be read from the result cache.
- B. No virtual warehouse will be used, data will be read from the local disk cache.
- C. The default virtual warehouse will be used to read all data.
- D. The virtual warehouse that is defined at the session level will be used to read all data.

Answer: A

NEW QUESTION 357

- (Exam Topic 3)

Which of the following can be used when unloading data from Snowflake? (Choose two.)

- A. When unloading semi-structured data, it is recommended that the STRIP_OUTER_ARRAY option be used.
- B. Use the ENCODING file format option to change the encoding from the default UTF-8.
- C. The OBJECT_CONSTRUCT function can be used to convert relational data to semi-structured data.
- D. By using the SINGLE = TRUE parameter, a single file up to 5 GB in size can be exported to the storage layer.
- E. Use the PARSE_JSON function to ensure structured data will be unloaded into the VARIANT data type.

Answer: AD

NEW QUESTION 362

- (Exam Topic 3)

Assume there is a table consisting of five micro-partitions with values ranging from A to Z. Which diagram indicates a well-clustered table?

- A. C:\Users\Admin\Desktop\Data\Odt data\Untitled.jpg



- B. C:\Users\Admin\Desktop\Data\Odt data\Untitled.jpg



- C. C:\Users\Admin\Desktop\Data\Odt data\Untitled.jpg



D. C:\Users\Admin\Desktop\Data\Odt data\Untitled.jpg



Answer: A

NEW QUESTION 365

- (Exam Topic 3)

Which of the following accurately describes shares?

- A. Tables, secure views, and secure UDFs can be shared
- B. Shares can be shared
- C. Data consumers can clone a new table from a share
- D. Access to a share cannot be revoked once granted

Answer: A

NEW QUESTION 367

- (Exam Topic 3)

What is the default file size when unloading data from Snowflake using the COPY command?

- A. 5 MB
- B. 8 GB
- C. 16 MB
- D. 32 MB

Answer: C

NEW QUESTION 372

- (Exam Topic 3)

Which statements reflect key functionalities of a Snowflake Data Exchange? (Choose two.)

- A. If an account is enrolled with a Data Exchange, it will lose its access to the Snowflake Marketplace.
- B. A Data Exchange allows groups of accounts to share data privately among the accounts.
- C. A Data Exchange allows accounts to share data with third, non-Snowflake parties.
- D. Data Exchange functionality is available by default in accounts using the Enterprise edition or higher.
- E. The sharing of data in a Data Exchange is bidirectiona
- F. An account can be a provider for some datasets and a consumer for others.

Answer: B

NEW QUESTION 375

- (Exam Topic 3)

Which command can be used to load data files into a Snowflake stage?

- A. JOIN
- B. COPY INTO
- C. PUT
- D. GET

Answer: C

NEW QUESTION 380

- (Exam Topic 3)

Which minimum Snowflake edition allows for a dedicated metadata store?

- A. Standard

- B. Enterprise
- C. Business Critical
- D. Virtual Private Snowflake

Answer: D

Explanation:

Reference: <https://docs.snowflake.com/en/user-guide/intro-editions.html>

NEW QUESTION 382

- (Exam Topic 3)

How are serverless features billed?

- A. Per second multiplied by an automatic sizing for the job
- B. Per minute multiplied by an automatic sizing for the job, with a minimum of one minute
- C. Per second multiplied by the size, as determined by the SERVERLESS_FEATURES_SIZE account parameter
- D. Serverless features are not billed, unless the total cost for the month exceeds 10% of the warehouse credits, on the account

Answer: D

NEW QUESTION 387

- (Exam Topic 3)

What is the minimum Snowflake edition required to use Dynamic Data Masking?

- A. Standard
- B. Enterprise
- C. Business Critical
- D. Virtual Private Snowflake (VPC)

Answer: D

NEW QUESTION 388

- (Exam Topic 3)

Users are responsible for data storage costs until what occurs?

- A. Data expires from Time Travel
- B. Data expires from Fail-safe
- C. Data is deleted from a table
- D. Data is truncated from a table

Answer: B

NEW QUESTION 390

- (Exam Topic 3)

By default, which Snowflake role is required to create a share?

- A. ORGADMIN
- B. SECURITYADMIN
- C. SHAREADMIN
- D. ACCOUNTADMIN

Answer: C

NEW QUESTION 393

- (Exam Topic 3)

Which data types are supported by Snowflake when using semi-structured data? (Choose two.)

- A. VARIANT
- B. VARRAY
- C. STRUCT
- D. ARRAY
- E. QUEUE

Answer: AD

NEW QUESTION 394

- (Exam Topic 3)

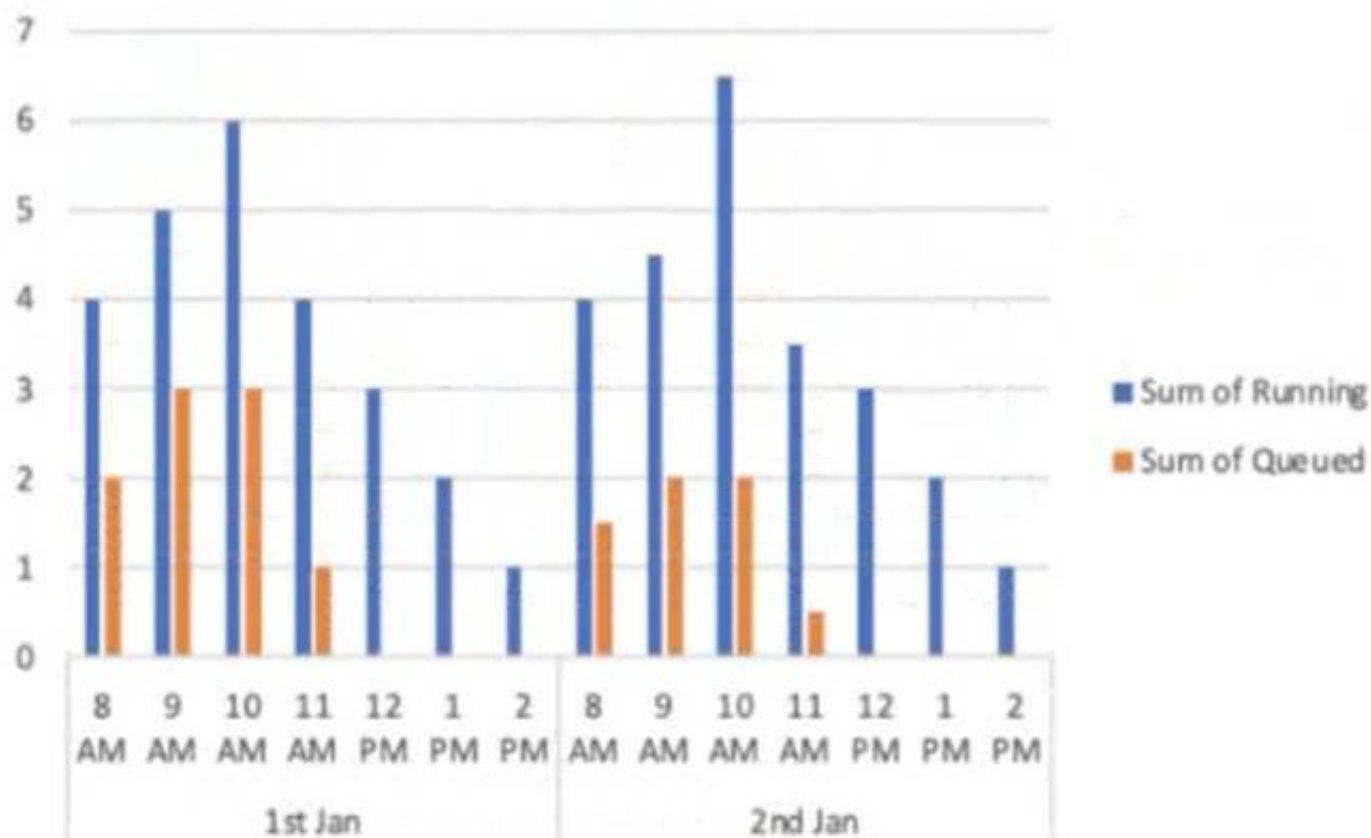
A virtual warehouse is created using the following command:

Create warehouse my_WH with warehouse_size = MEDIUM min_cluster_count = 1

max_cluster_count = 1

auto_suspend = 60 auto_resume = true;

The image below is a graphical representation of the warehouse utilization across two days.



What action should be taken to address this situation?

- A. Increase the warehouse size from Medium to 2XL.
- B. Increase the value for the parameter MAX_CONCURRENCY_LEVEL.
- C. Configure the warehouse to a multi-cluster warehouse.
- D. Lower the value of the parameter STATEMENT_QUEUED_TIMEOUT_IN_SECONDS.

Answer: B

NEW QUESTION 398

- (Exam Topic 3)

What internal stages are available in Snowflake? (Choose three.)

- A. Schema stage
- B. Named stage
- C. User stage
- D. Stream stage
- E. Table stage
- F. Database stage

Answer: ABE

NEW QUESTION 399

- (Exam Topic 3)

True or False: Snowpipe via REST API can only reference External Stages as source.

- A. True
- B. False

Answer: B

Explanation:

Reference: <https://community.snowflake.com/s/article/Making-Transient-table-by-Default>

NEW QUESTION 402

- (Exam Topic 3)

Which of the following objects can be directly restored using the UNDROP command? (Choose two.)

- A. Schema
- B. View
- C. Internal stage
- D. Table
- E. User
- F. Role

Answer: AD

NEW QUESTION 404

- (Exam Topic 3)

How should a virtual warehouse be configured if a user wants to ensure that additional multi-clusters are resumed with no delay?

- A. Configure the warehouse to a size larger than generally required
- B. Set the minimum and maximum clusters to autoscale

- C. Use the standard warehouse scaling policy
- D. Use the economy warehouse scaling policy

Answer: B

NEW QUESTION 409

- (Exam Topic 3)

Network policies can be set at which Snowflake levels? (Choose two.)

- A. Role
- B. Schema
- C. User
- D. Database
- E. Account
- F. Tables

Answer: CE

Explanation:

Reference: <https://docs.snowflake.com/en/user-guide/network-policies.html#creating-network-policies>

NEW QUESTION 414

- (Exam Topic 3)

What versions of Snowflake should be used to manage compliance with Personal Identifiable Information (PII) requirements? (Choose two.)

- A. Custom Edition
- B. Virtual Private Snowflake
- C. Business Critical Edition
- D. Standard Edition
- E. Enterprise Edition

Answer: BC

NEW QUESTION 416

- (Exam Topic 3)

Which Snowflake layer is always leveraged when accessing a query from the result cache?

- A. Metadata
- B. Data Storage
- C. Compute
- D. Cloud Services

Answer: D

NEW QUESTION 419

- (Exam Topic 3)

What happens to historical data when the retention period for an object ends?

- A. The data is cloned into a historical object.
- B. The data moves to Fail-safe
- C. Time Travel on the historical data is dropped.
- D. The object containing the historical data is dropped.

Answer: D

NEW QUESTION 422

- (Exam Topic 3)

The Snowflake Cloud Data Platform is described as having which of the following architectures?

- A. Shared-disk
- B. Shared-nothing
- C. Multi-cluster shared data
- D. Serverless query engine

Answer: C

NEW QUESTION 427

- (Exam Topic 3)

When loading data into Snowflake via Snowpipe what is the compressed file size recommendation?

- A. 10-50 MB
- B. 100-250 MB
- C. 300-500 MB
- D. 1000-1500 MB

Answer: B

NEW QUESTION 432

- (Exam Topic 3)

The Snowflake cloud services layer is responsible for which tasks? (Choose two.)

- A. Local disk caching
- B. Authentication and access control
- C. Metadata management
- D. Query processing
- E. Database storage

Answer: CD

NEW QUESTION 433

- (Exam Topic 3)

Which parameter can be used to instruct a COPY command to verify data files instead of loading them into a specified table?

- A. STRIP_NULL_VALUES
- B. SKIP_BYTE_ORDER_MARK
- C. REPLACE_INVALID_CHARACTERS
- D. VALIDATION_MODE

Answer: D

Explanation:

<https://docs.snowflake.com/en/sql-reference/sql/copy-into-table.html>

VALIDATION_MODE = RETURN_ROWS | RETURN_ERRORS | RETURN_ALL_ERRORS

String (constant) that instructs the COPY command to validate the data files instead of loading them into the

specified table; i.e. the COPY command tests the files for errors but does not load them. The command validates the data to be loaded and returns results based on the validation option specified:

NEW QUESTION 435

- (Exam Topic 3)

A table needs to be loaded. The input data is in JSON format and is a concatenation of multiple JSON documents. The file size is 3 GB. A warehouse size small is being used. The following COPY INTO command was executed:

```
COPY INTO SAMPLE FROM @~/SAMPLE.JSON (TYPE=JSON)
```

The load failed with this error:

Max LOB size (16777216) exceeded, actual size of parsed column is 17894470. How can this issue be resolved?

- A. Compress the file and load the compressed file.
- B. Split the file into multiple files in the recommended size range (100 MB - 250 MB).
- C. Use a larger-sized warehouse.
- D. Set STRIP_OUTER_ARRAY=TRUE in the COPY INTO command.

Answer: A

NEW QUESTION 438

- (Exam Topic 3)

In a Snowflake role hierarchy, what is the top-level role?

- A. SYSADMIN
- B. ORGADMIN
- C. ACCOUNTADMIN
- D. SECURITYADMIN

Answer: B

NEW QUESTION 442

- (Exam Topic 3)

Which formats does Snowflake store unstructured data in? (Choose two.)

- A. GeoJSON
- B. Array
- C. XML
- D. Object
- E. BLOB

Answer: DE

NEW QUESTION 446

- (Exam Topic 3)

Which commands should be used to grant the privilege allowing a role to select data from all current tables and any tables that will be created later in a schema? (Choose two.)

- A. grant USAGE on all tables in schema DB1.SCHEMA to role MYROLE;
- B. grant USAGE on future tables in schema DB1.SCHEMA to role MYROLE;

- C. grant SELECT on all tables in schema DB1.SCHEMA to role MYROLE;
- D. grant SELECT on future tables in schema DB1.SCHEMA to role MYROLE;
- E. grant SELECT on all tables in database DB1 to role MYROLE;
- F. grant SELECT on future tables in database DB1 to role MYROLE;

Answer: CD

NEW QUESTION 451

- (Exam Topic 3)

What is the minimum Snowflake edition required for row level security?

- A. Standard
- B. Enterprise
- C. Business Critical
- D. Virtual Private Snowflake

Answer: B

NEW QUESTION 454

- (Exam Topic 3)

Which of the following objects are contained within a schema? (Choose two.)

- A. Role
- B. Stream
- C. Warehouse
- D. External table
- E. User
- F. Share

Answer: CD

NEW QUESTION 458

- (Exam Topic 3)

Which snowflake objects will incur both storage and cloud compute charges? (Select TWO)

- A. Materialized view
- B. Sequence
- C. Secure view
- D. Transient table
- E. Clustered table

Answer: DE

NEW QUESTION 461

- (Exam Topic 3)

What is the SNOWFLAKE.ACCOUNT_USAGE view that contains information about which objects were read by queries within the last 365 days (1 year)?

- A. VIEWS_HISTORY
- B. OBJECT_HISTORY
- C. ACCESS_HISTORY
- D. LOGIN_HISTORY

Answer: C

NEW QUESTION 466

- (Exam Topic 3)

Which Snowflake architectural layer is responsible for a query execution plan?

- A. Compute
- B. Data storage
- C. Cloud services
- D. Cloud provider

Answer: D

NEW QUESTION 467

- (Exam Topic 3)

Which Snowflake tool would be BEST to troubleshoot network connectivity?

- A. SnowCLI
- B. SnowUI
- C. SnowSQL
- D. SnowCD

Answer: D

Explanation:

[https://docs.snowflake.com/en/user-guide/snowcd.html#:~:text=SnowCD%20\(i.e.%20Snowflake%20Connectivi](https://docs.snowflake.com/en/user-guide/snowcd.html#:~:text=SnowCD%20(i.e.%20Snowflake%20Connectivi)

NEW QUESTION 469

- (Exam Topic 3)

How does Snowflake allow a data provider with an Azure account in central Canada to share data with a data consumer on AWS in Australia?

- A. The data provider in Azure Central Canada can create a direct share to AWS Asia Pacific, if they are both in the same organization.
- B. The data consumer and data provider can form a Data Exchange within the same organization to create a share from Azure Central Canada to AWS Asia Pacific.
- C. The data provider uses the GET DATA workflow in the Snowflake Data Marketplace to create a share between Azure Central Canada and AWS Asia Pacific.
- D. The data provider must replicate the database to a secondary account in AWS Asia Pacific within the same organization then create a share to the data consumer's account.

Answer: C

NEW QUESTION 471

- (Exam Topic 3)

Which of the following features are available with the Snowflake Enterprise edition? (Choose two.)

- A. Database replication and failover
- B. Automated index management
- C. Customer managed keys (Tri-secret secure)
- D. Extended time travel
- E. Native support for geospatial data

Answer: AD

NEW QUESTION 476

- (Exam Topic 3)

Using variables in Snowflake is denoted by using which SQL character?

- A. @
- B. &
- C. \$
- D. #

Answer: C

NEW QUESTION 478

- (Exam Topic 3)

Which of the following describes a Snowflake stored procedure?

- A. They can be created as secure and hide the underlying metadata from the user.
- B. They can only access tables from a single database.
- C. They can contain only a single SQL statement.
- D. They can be created to run with a caller's rights or an owner's rights.

Answer: A

Explanation:

Reference: <https://docs.snowflake.com/en/sql-reference/stored-procedures-overview.html>

NEW QUESTION 481

.....

THANKS FOR TRYING THE DEMO OF OUR PRODUCT

Visit Our Site to Purchase the Full Set of Actual SnowPro-Core Exam Questions With Answers.

We Also Provide Practice Exam Software That Simulates Real Exam Environment And Has Many Self-Assessment Features. Order the SnowPro-Core Product From:

<https://www.2passeasy.com/dumps/SnowPro-Core/>

Money Back Guarantee

SnowPro-Core Practice Exam Features:

- * SnowPro-Core Questions and Answers Updated Frequently
- * SnowPro-Core Practice Questions Verified by Expert Senior Certified Staff
- * SnowPro-Core Most Realistic Questions that Guarantee you a Pass on Your FirstTry
- * SnowPro-Core Practice Test Questions in Multiple Choice Formats and Updatesfor 1 Year