

az-500 Dumps

Microsoft Azure Security Technologies

<https://www.certleader.com/az-500-dumps.html>



NEW QUESTION 1

Note: This question is part of a series of questions that present the same scenario. Each question in the series contains a unique solution that might meet the stated goals. Some question sets might have more than one correct solution, while others might not have a correct solution.

After you answer a question in this section, you will NOT be able to return to it. As a result, these questions will not appear in the review screen.

You have a hybrid configuration of Azure Active Directory (AzureAD). You have an Azure HDInsight cluster on a virtual network.

You plan to allow users to authenticate to the cluster by using their on-premises Active Directory credentials. You need to configure the environment to support the planned authentication.

Solution: You deploy the On-premises data gateway to the on-premises network. Does this meet the goal?

A. Yes

B. No

Answer: B

Explanation:

Instead, you connect HDInsight to your on-premises network by using Azure Virtual Networks and a VPN gateway.

- Note: To allow HDInsight and resources in the joined network to communicate by name, you must perform the following actions: Create Azure Virtual Network.

- Create a custom DNS server in the Azure Virtual Network.

- Configure the virtual network to use the custom DNS server instead of the default Azure Recursive Resolver. Configure forwarding between the custom DNS server and your on-premises DNS server.

References:

<https://docs.microsoft.com/en-us/azure/hdinsight/connect-on-premises-network>

NEW QUESTION 2

Note: This question is part of a series of questions that present the same scenario. Each question in the series contains a unique solution that might meet the stated goals. Some question sets might have more than one correct solution, while others might not have a correct solution.

After you answer a question in this section, you will NOT be able to return to it. As a result, these questions will not appear in the review screen.

You have a hybrid configuration of Azure Active Directory (AzureAD). You have an Azure HDInsight cluster on a virtual network.

You plan to allow users to authenticate to the cluster by using their on-premises Active Directory credentials. You need to configure the environment to support the planned authentication.

Solution: You create a site-to-site VPN between the virtual network and the on-premises network. Does this meet the goal?

A. Yes

B. No

Answer: A

Explanation:

You can connect HDInsight to your on-premises network by using Azure Virtual Networks and a VPN gateway.

- Note: To allow HDInsight and resources in the joined network to communicate by name, you must perform the following actions: Create Azure Virtual Network.

- Create a custom DNS server in the Azure Virtual Network.

- Configure the virtual network to use the custom DNS server instead of the default Azure Recursive Resolver. Configure forwarding between the custom DNS server and your on-premises DNS server.

References:

<https://docs.microsoft.com/en-us/azure/hdinsight/connect-on-premises-network>

NEW QUESTION 3

DRAG DROP

You are implementing conditional access policies.

You must evaluate the existing Azure Active Directory (Azure AD) risk events and risk levels to configure and implement the policies. You need to identify the risk level of the following risk events:

- Users with leaked credentials Impossible travel to atypical locations

- Sign ins from IP addresses with suspicious activity

Which level should you identify for each risk event? To answer, drag the appropriate levels to the correct risk events. Each level may be used once, more than once, or not at all. You may need to drag the split bar between panes or scroll to view content.

NOTE: Each correct selection is worth one point.

Select and Place:

Levels	Answer Area
High	Impossible travel to atypical locations: <input type="text"/>
Low	Users with leaked credentials: <input type="text"/>
Medium	Sign ins from IP addresses with suspicious activity: <input type="text"/>

A. Mastered

B. Not Mastered

Answer: A

Explanation:

- Azure AD Identity protection can detect six types of suspicious sign-in activities: Users with leaked credentials

- Sign-ins from anonymous IP addresses Impossible travel to atypical locations
- Sign-ins from infected devices
- Sign-ins from IP addresses with suspicious activity Sign-ins from unfamiliar locations

These six types of events are categorized in to 3 levels of risks – High, Medium & Low:

Sign-in Activity	Risk Level
Users with leaked credentials	High
Sign-ins from anonymous IP addresses	Medium
Impossible travel to atypical locations	Medium
Sign-ins from infected devices	Medium
Sign-ins from IP addresses with suspicious activity	Low
Sign-ins from unfamiliar locations	Medium

References:

<http://www.rebeladmin.com/2018/09/step-step-guide-configure-risk-based-azure-conditional-access-policies/>

NEW QUESTION 4

DRAG DROP

You need to configure an access review. The review will be assigned to a new collection of reviews and reviewed by resource owners.

Which three actions should you perform in sequence? To answer, move the appropriate actions from the list of actions to the answer area and arrange them in the correct order.

Select and Place:

Actions

Create an access review program.

Set Reviewers to Selected users.

Create an access review audit.

Create an access review control.

Set Reviewers to Group owners.

Set Reviewers to Members.

Answer Area

⬅

➡

⬆

⬆

- A. Mastered
B. Not Mastered

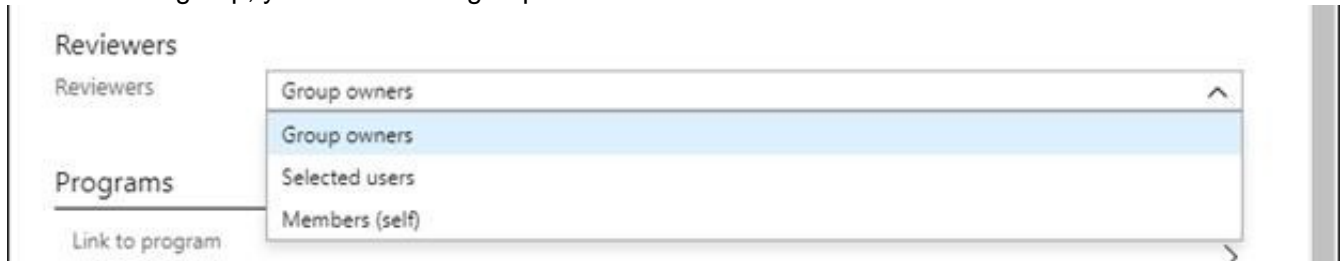
Answer: A

Explanation:

Step 1: Create an access review program Step 2: Create an access review control

Step 3: Set Reviewers to Group owners

In the Reviewers section, select either one or more people to review all the users in scope. Or you can select to have the members review their own access. If the resource is a group, you can ask the group owners to review.



References:

<https://docs.microsoft.com/en-us/azure/active-directory/governance/create-access-review>

<https://docs.microsoft.com/en-us/azure/active-directory/governance/manage-programs-controls>

NEW QUESTION 5

You have an Azure subscription.

You create an Azure web app named Contoso1812 that uses an S1 App service plan.

You create a DNS record for www.contoso.com that points to the IP address of Contoso1812.

You need to ensure that users can access Contoso1812 by using the https://www.contoso.com URL. Which two actions should you perform? Each correct answer presents part of the solution.

NOTE: Each correct selection is worth one point.

A. Turn on the system-assigned managed identity for Contoso1812.

B. Add a hostname to Contoso1812.

C. Scale out the App Service plan of Contoso1812.

D. Add a deployment slot to Contoso1812.

E. Scale up the App Service plan of Contoso1812.

Answer: BE

Explanation:

B: You can configure Azure DNS to host a custom domain for your web apps. For example, you can create an Azure web app and have your users access it using either www.contoso.com or contoso.com as a fully qualified domain name (FQDN).

To do this, you have to create three records:

A root "A" record pointing to contoso.com A root "TXT" record for verification

A "CNAME" record for the www name that points to the A record

E: To map a custom DNS name to a web app, the web app's App Service plan must be a paid tier (Shared, Basic, Standard, Premium or Consumption for Azure Functions). I

Scale up the App Service plan: Select any of the non-free tiers (D1, B1, B2, B3, or any tier in the Production category). References:

<https://docs.microsoft.com/en-us/azure/dns/dns-web-sites-custom-domain>

Testlet 1

This is a case study. Case studies are not timed separately. You can use as much exam time as you would like to complete each case. However, there may be additional case studies and sections on this exam. You must manage your time to ensure that you are able to complete all questions included on this exam in the time provided.

To answer the questions included in a case study, you will need to reference information that is provided in the case study. Case studies might contain exhibits and other resources that provide more information about the scenario that is described in the case study. Each question is independent of the other question on this case study.

At the end of this case study, a review screen will appear. This screen allows you to review your answers and to make changes before you move to the next sections of the exam. After you begin a new section, you cannot return to this section.

To start the case study

To display the first question on this case study, click the Next button. Use the buttons in the left pane to explore the content of the case study before you answer the questions. Clicking these buttons displays information such as business requirements, existing environment, and problem statements. If the case study has an All Information tab, note that the information displayed is identical to the information displayed on the subsequent tabs. When you are ready to answer a question, click the Question button to return to the question.

Overview

Litware, Inc. is a digital media company that has 500 employees in the Chicago area and 20 employees in the San Francisco area.

Existing Environment

Litware has an Azure subscription named Sub1 that has a subscription ID of 43894a43-17c2-4a39-8cfc-3540c2653ef4.

Sub1 is associated to an Azure Active Directory (Azure AD) tenant named litwareinc.com. The tenant contains the user objects and the device objects of all the Litware employees and their devices. Each user is assigned an Azure AD Premium P2 license. Azure AD Privileged Identity Management (PIM) is activated.

The tenant contains the groups shown in the following table.

Name	Type	Description
Group1	Security group	A group that has the Dynamic User membership type, contains all the San Francisco users, and provides access to many Azure AD applications and Azure resources.
Group2	Security group	A group that has the Dynamic User membership type and contains the Chicago IT team

The Azure subscription contains the objects shown in the following table.

Name	Type	Description
VNet1	Virtual network	VNet1 is a virtual network that contains security-sensitive IT resources. VNet1 contains three subnets named Subnet0, Subnet1, and AzureFirewallSubnet.
VM0	Virtual machine	VM0 is an Azure virtual machine that runs Windows Server 2016, connects to Subnet0, and has just in time (JIT) VM access configured.
VM1	Virtual machine	VM1 is an Azure virtual machine that runs Windows Server 2016 and connects to Subnet0.
SQLDB1	Azure SQL Database	SQLDB1 is an Azure SQL database on a SQL Database server named LitwareSQLServer1.
WebApp1	Web app	WebApp1 is an Azure web app that is accessible by using https://litwareinc.com and http://www.litwareinc.com .
Resource Group1	Resource group	Resource Group1 is a resource group that contains VNet1, VM0, and VM1.
Resource Group2	Resource group	Resource Group2 is a resource group that contains shared IT resources.

Azure Security Center is set to the Free tier.
Planned changes
Litware plans to deploy the Azure resources shown in the following table.

Name	Type	Description
Firewall1	Azure Firewall	An Azure firewall on VNet1.
RT1	Route table	A route table that will contain a route pointing to Firewall1 as the default gateway and will be assigned to Subnet0.
AKS1	Azure Kubernetes Service (AKS)	A managed AKS cluster

Litware identifies the following identity and access requirements:

- All San Francisco users and their devices must be members of Group1.
- The members of Group2 must be assigned the Contributor role to Resource Group2 by using a permanent eligible assignment.
- Users must be prevented from registering applications in Azure AD and from consenting to applications that access company information on the users' behalf.

Platform Protection Requirements

Litware identifies the following platform protection requirements:

- Microsoft Antimalware must be installed on the virtual machines in Resource Group1.
- The members of Group2 must be assigned the Azure Kubernetes Service Cluster Admin Role. Azure AD users must be to authenticate to AKS1 by using their Azure AD credentials.
- Following the implementation of the planned changes, the IT team must be able to connect to VM0 by using JIT VM access.
- A new custom RBAC role named Role1 must be used to delegate the administration of the managed disks in Resource Group1. Role1 must be available only for Resource Group1.

Security Operations Requirements

Litware must be able to customize the operating system security configurations in Azure Security Center.

NEW QUESTION 6
HOTSPOT

You are evaluating the security of the network communication between the virtual machines in Sub2. For each of the following statements, select Yes if the statement is true. Otherwise, select No. NOTE: Each correct selection is worth one point.
Hot Area:

Answer Area		
Statements	Yes	No
From VM1, you can successfully ping the public IP address of VM2.	<input type="radio"/>	<input type="radio"/>
From VM1, you can successfully ping the private IP address of VM3.	<input type="radio"/>	<input type="radio"/>
From VM1, you can successfully ping the public IP address of VM5.	<input type="radio"/>	<input type="radio"/>

A. Mastered

B. Not Mastered

Answer: A

Explanation:

Box 1: Yes

NSG1 has the inbound security rules shown in the following table.

Priority	Port	Protocol	Source	Destination	Action
65000	Any	Any	VirtualNetwork	VirtualNetwork	Allow
65001	Any	Any	AzureLoadBalancer	Any	Allow
65500	Any	Any	Any	Any	Deny

NSG2 has the inbound security rules shown in the following table.

Priority	Port	Protocol	Source	Destination	Action
100	80	TCP	Internet	VirtualNetwork	Allow
65000	Any	Any	VirtualNetwork	VirtualNetwork	Allow
65001	Any	Any	AzureLoadBalancer	Any	Allow
65500	Any	Any	Any	Any	Deny

Box 2: Yes

Box 3: No Note:

Sub2 contains the virtual machines shown in the following table.

Name	Network interface	Application security group	Connected to
VM1	NIC1	ASG1	Subnet1.1
VM2	NIC2	ASG2	Subnet1.1
VM3	NIC3	None	Subnet1.2
VM4	NIC4	ASG1	Subnet1.3
VM5	NIC5	None	Subnet2.1

Name	Subnet
VNetwork1	Subnet1.1, Subnet1.2 and Subnet1.3
VNetwork2	Subnet2.1

Sub2 contains the network security groups (NSGs) shown in the following table.

Name	Associated to
NSG1	NIC2
NSG2	Subnet1.1
NSG3	Subnet1.3
NSG4	Subnet2.1

Question Set 3

NEW QUESTION 7

You have an Azure subscription named Sub1. Sub1 contains a virtual network named VNet1 that contains one subnet named Subnet1.

You create a service endpoint for Subnet1.

Subnet1 contains an Azure virtual machine named VM1 that runs Ubuntu Server 18.04.

You need to deploy Docker containers to VM1. The containers must be able to access Azure Storage resources and Azure SQL databases by using the service endpoint.

- A. Create an application security group and a network security group (NSG).
- B. Edit the docker-compose.yml file.
- C. Install the container network interface (CNI) plug-in.

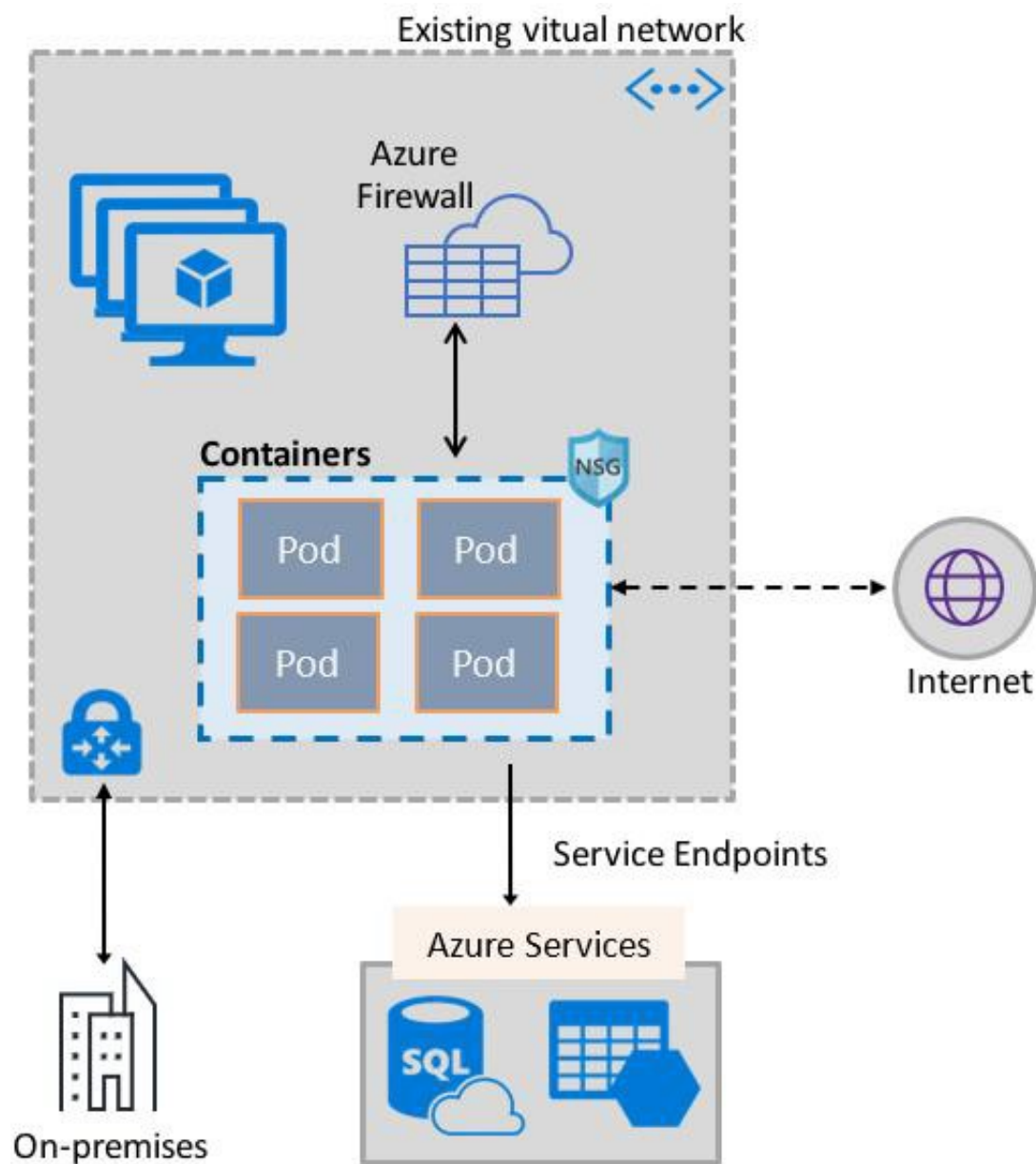
Answer: C

Explanation:

The Azure Virtual Network container network interface (CNI) plug-in installs in an Azure Virtual Machine. The plug-in supports both Linux and Windows platform.

The plug-in assigns IP addresses from a virtual network to containers brought up in the virtual machine, attaching them to the virtual network, and connecting them directly to other containers and virtual network resources. The plug-in doesn't rely on overlay networks, or routes, for connectivity, and provides the same performance as virtual machines.

The following picture shows how the plug-in provides Azure Virtual Network capabilities to Pods:



References:
<https://docs.microsoft.com/en-us/azure/virtual-network/container-networking-overview>

NEW QUESTION 8

You are configuring an Azure Kubernetes Service (AKS) cluster that will connect to an Azure Container Registry. You need to use the auto-generated service principal to authenticate to the Azure Container Registry. What should you create?

- A. an Azure Active Directory (Azure AD) group
- B. an Azure Active Directory (Azure AD) role assignment
- C. an Azure Active Directory (Azure AD) user
- D. a secret in Azure Key Vault

Answer: B

Explanation:

When you create an AKS cluster, Azure also creates a service principal to support cluster operability with other Azure resources. You can use this auto-generated service principal for authentication with an ACR registry. To do so, you need to create an Azure AD role assignment that grants the cluster's service principal access to the container registry.

References:
<https://docs.microsoft.com/bs-latn-ba/azure/container-registry/container-registry-auth-aks>

NEW QUESTION 9

HOTSPOT

You have an Azure subscription that contains the virtual machines shown in the following table.

Name	Resource group	Status
VM1	RG1	Stopped (Deallocated)
VM2	RG2	Stopped (Deallocated)

You create the Azure policies shown in the following table.

Policy definition	Resource type	Scope
Not allowed resource types	virtualMachines	RG1
Allowed resource types	virtualMachines	RG2

You create the resource locks shown in the following table.

Name	Type	Created on
Lock1	Read-only	VM1
Lock2	Read-only	RG2

For each of the following statements, select Yes if the statement is true. Otherwise, select No.

NOTE: Each correct selection is worth one point.

Hot Area:

Answer Area

Statements	Yes	No
You can start VM1.	<input type="radio"/>	<input type="radio"/>
You can start VM2.	<input type="radio"/>	<input type="radio"/>
You can create a virtual machine in RG2.	<input type="radio"/>	<input type="radio"/>

- A. Mastered
- B. Not Mastered

Answer: A

Explanation:

Answer Area

Statements	Yes	No
You can start VM1.	<input type="radio"/>	<input checked="" type="radio"/>
You can start VM2.	<input checked="" type="radio"/>	<input type="radio"/>
You can create a virtual machine in RG2.	<input checked="" type="radio"/>	<input type="radio"/>

References:
<https://docs.microsoft.com/en-us/azure/governance/blueprints/concepts/resource-locking>

NEW QUESTION 10

HOTSPOT

You have an Azure key vault.

You need to delegate administrative access to the key vault to meet the following requirements:

_ Provide a user named User1 with the ability to set advanced access policies for the key vault. Provide a user named User2 with the ability to add and delete certificates in the key vault. Use the principle of least privilege.

What should you use to assign access to each user? To answer, select the appropriate options in the answer area.

NOTE: Each correct selection is worth one point.

Hot Area:

Answer Area

User1:

	▼
A key vault access policy	
Azure Information Protection	
Azure Policy	
Managed identities for Azure resources	
RBAC	

User2:

	▼
A key vault access policy	
Azure Information Protection	
Azure Policy	
Managed identities for Azure resources	
RBAC	

- A. Mastered
- B. Not Mastered

Answer: A

Explanation:

User1: RBAC

_ RBAC is used as the Key Vault access control mechanism for the management plane. It would allow a user with the proper identity to: set Key Vault access policies

_ create, read, update, and delete key vaults set Key Vault tags

Note: Role-based access control (RBAC) is a system that provides fine-grained access management of Azure resources. Using RBAC, you can segregate duties within your team and grant only the amount of access to users that they need to perform their jobs.

User2: A key vault access policy

A key vault access policy is the access control mechanism to get access to the key vault data plane. Key Vault access policies grant permissions separately to keys, secrets, and certificates.

References:

<https://docs.microsoft.com/en-us/azure/key-vault/key-vault-secure-your-key-vault>

NEW QUESTION 10

HOTSPOT

You have two Azure virtual machines in the East US2 region as shown in the following table.

Name	Operating system	Type	Tier
VM1	Windows Server 2008 R2	A3	Basic
VM2	Ubuntu 16.04-DAILY-LTS	L4s	Standard

You deploy and configure an Azure Key vault.

You need to ensure that you can enable Azure Disk Encryption on VM1 and VM2.

What should you modify on each virtual machine? To answer, select the appropriate options in the answer area.

NOTE: Each correct selection is worth one point.

Hot Area:

Answer Area

VM1:

	▼
The operating system version	
The tier	
The type	

VM2:

	▼
The operating system version	
The tier	
The type	

- A. Mastered
- B. Not Mastered

Answer: A

Explanation:

VM1: The Tier

The Tier needs to be upgraded to standard.

Disk Encryption for Windows and Linux IaaS VMs is in General Availability in all Azure public regions and Azure Government regions for Standard VMs and VMs with Azure Premium Storage.

VM2: The type

Need to change the VMtype to any of A, D, DS, G, GS, F, and so on, series IaaS VMs.

Not the operating system version: Ubuntu 16.04 is supported. References:

<https://docs.microsoft.com/en-us/azure/security/azure-security-disk-encryption-overview>

https://docs.microsoft.com/en-us/azure/security/azure-security-disk-encryption-faq#bkmk_LinuxOSSupport

NEW QUESTION 13

You have an Azure virtual machines shown in the following table.

Name	Operating system	Region	Resource group
VM1	Windows Server 2012	East US	RG1
VM2	Windows Server 2012 R2	West Europe	RG1
VM3	Windows Server 2016	West Europe	RG2
VM4	Red Hat Enterprise Linux 7.4	East US	RG2

You create an Azure Log Analytics workspace named Analytics1 in RG1 in the East US region. Which virtual machines can be enrolled in Analytics1?

- A. VM1 only
- B. VM1, VM2, and VM3 only
- C. VM1, VM2, VM3, and VM4
- D. VM1 and VM4 only

Answer: A

Explanation:

Note: Create a workspace

_ In the Azure portal, click All services. In the list of resources, type Log Analytics. As you begin typing, the list filters based on your input. Select Log Analytics.

Click Create, and then select choices for the following items:

Provide a name for the new Log Analytics workspace, such as DefaultLAWorkspace. OMS workspaces are now referred to as Log Analytics workspaces. Select a Subscription to link to by selecting from the drop-down list if the default selected is not appropriate.

For Resource Group, select an existing resource group that contains one or more Azure virtual machines.

Select the Location your VMs are deployed to. For additional information, see which regions Log Analytics is available in. Incorrect Answers:

B, C: A Log Analytics workspace provides a geographic location for data storage. VM2 and VM3 are at a different location.

D: VM4 is a different resource group. References:

<https://docs.microsoft.com/en-us/azure/azure-monitor/platform/manage-access>

NEW QUESTION 15

HOTSPOT

Which virtual networks in Sub1 can User2 modify and delete in their current state? To answer, select the appropriate options in the answer area.

NOTE: Each correct selection is worth one point.

Hot Area:

Answer Area

Virtual networks that User2 can modify:

▼
VNET4 only
VNET4 and VNET1 only
VNET4, VNET3, and VNET1 only
VNET4, VNET3, VNET2, and VNET1

Virtual networks that User2 can delete:

▼
VNET4 only
VNET4 and VNET1 only
VNET4, VNET3, and VNET1 only
VNET4, VNET3, VNET2, and VNET1

- A. Mastered
- B. Not Mastered

Answer: A

Explanation:

Box 1: VNET4 and VNET1 only

RG1 has only Delete lock, while there are no locks on RG4. RG2 and RG3 both have Read-only locks.

Box 2: VNET4 only

There are no locks on RG4, while the other resource groups have either Delete or Read-only locks.

Note: As an administrator, you may need to lock a subscription, resource group, or resource to prevent other users in your organization from accidentally deleting or modifying critical resources. You can set the lock level to CanNotDelete or ReadOnly. In the portal, the locks are called Delete and Read-only respectively.

_ CanNotDelete means authorized users can still read and modify a resource, but they can't delete the resource.

_ ReadOnly means authorized users can read a resource, but they can't delete or update the resource. Applying this lock is similar to restricting all authorized users to the permissions granted by the Reader role.

Scenario:

User2 is a Security administrator.

Sub1 contains six resource groups named RG1, RG2, RG3, RG4, RG5, and RG6.

User2 creates the virtual networks shown in the following table.

Name	Resource group
VNET1	RG1
VNET2	RG2
VNET3	RG3
VNET4	RG4

Sub1 contains the locks shown in the following table.

Name	Set on	Lock type
Lock1	RG1	Delete
Lock2	RG2	Read-only
Lock3	RG3	Delete
Lock4	RG3	Read-only

References:

<https://docs.microsoft.com/en-us/azure/azure-resource-manager/resource-group-lock-resources>

Testlet 2

This is a case study. Case studies are not timed separately. You can use as much exam time as you would like to complete each case. However, there may be additional case studies and sections on this exam. You must manage your time to ensure that you are able to complete all questions included on this exam in the time provided.

To answer the questions included in a case study, you will need to reference information that is provided in the case study. Case studies might contain exhibits and other resources that provide more information about the scenario that is described in the case study. Each question is independent of the other question on this case study.

At the end of this case study, a review screen will appear. This screen allows you to review your answers and to make changes before you move to the next sections of the exam. After you begin a new section, you cannot return to this section.

To start the case study

To display the first question on this case study, click the Next button. Use the buttons in the left pane to explore the content of the case study before you answer the questions. Clicking these buttons displays information such as business requirements, existing environment, and problem statements. If the case study has an All Information tab, note that the information displayed is identical to the information displayed on the subsequent tabs. When you are ready to answer a question, click the Question button to return to the question.

Overview

Litware, Inc. is a digital media company that has 500 employees in the Chicago area and 20 employees in the San Francisco area.

Existing Environment

Litware has an Azure subscription named Sub1 that has a subscription ID of 43894a43-17c2-4a39-8cfc-3540c2653ef4.

Sub1 is associated to an Azure Active Directory (Azure AD) tenant named litwareinc.com. The tenant contains the user objects and the device objects of all the Litware employees and their devices. Each user is assigned an Azure AD Premium P2 license. Azure AD Privileged Identity Management (PIM) is activated.

The tenant contains the groups shown in the following table.

Name	Type	Description
Group1	Security group	A group that has the Dynamic User membership type, contains all the San Francisco users, and provides access to many Azure AD applications and Azure resources.
Group2	Security group	A group that has the Dynamic User membership type and contains the Chicago IT team

The Azure subscription contains the objects shown in the following table.

Name	Type	Description
VNet1	Virtual network	VNet1 is a virtual network that contains security-sensitive IT resources. VNet1 contains three subnets named Subnet0, Subnet1, and AzureFirewallSubnet.
VM0	Virtual machine	VM0 is an Azure virtual machine that runs Windows Server 2016, connects to Subnet0, and has just in time (JIT) VM access configured.
VM1	Virtual machine	VM1 is an Azure virtual machine that runs Windows Server 2016 and connects to Subnet0.
SQLDB1	Azure SQL Database	SQLDB1 is an Azure SQL database on a SQL Database server named LitwareSQLServer1.
WebApp1	Web app	WebApp1 is an Azure web app that is accessible by using https://litwareinc.com and http://www.litwareinc.com .
Resource Group1	Resource group	Resource Group1 is a resource group that contains VNet1, VM0, and VM1.
Resource Group2	Resource group	Resource Group2 is a resource group that contains shared IT resources.

Azure Security Center is set to the Free tier.

Planned changes

Litware plans to deploy the Azure resources shown in the following table.

Name	Type	Description
Firewall1	Azure Firewall	An Azure firewall on VNet1.
RT1	Route table	A route table that will contain a route pointing to Firewall1 as the default gateway and will be assigned to Subnet0.
AKS1	Azure Kubernetes Service (AKS)	A managed AKS cluster

Litware identifies the following identity and access requirements:

- _ All San Francisco users and their devices must be members of Group1.
- _ The members of Group2 must be assigned the Contributor role to Resource Group2 by using a permanent eligible assignment.
- _ Users must be prevented from registering applications in Azure AD and from consenting to applications that access company information on the users' behalf.

Platform Protection Requirements

Litware identifies the following platform protection requirements:

- _ Microsoft Antimalware must be installed on the virtual machines in Resource Group1.
- _ The members of Group2 must be assigned the Azure Kubernetes Service Cluster Admin Role. Azure AD users must be able to authenticate to AKS1 by using their Azure AD credentials.
- _ Following the implementation of the planned changes, the IT team must be able to connect to VM0 by using JIT VM access.
- _ A new custom RBAC role named Role1 must be used to delegate the administration of the managed disks in Resource Group1. Role1 must be available only for Resource Group1.

Security Operations Requirements

Litware must be able to customize the operating system security configurations in Azure Security Center.

NEW QUESTION 20

You need to ensure that you can meet the security operations requirements.

What should you do first?

- Turn on Auto Provisioning in Security Center.
- Integrate Security Center and Microsoft Cloud App Security.
- Upgrade the pricing tier of Security Center to Standard.
- Modify the Security Center workspace configuration.

Answer: C

Explanation:

The Standard tier extends the capabilities of the Free tier to workloads running in private and other public clouds, providing unified security management and threat protection across your hybrid cloud workloads. The Standard tier also adds advanced threat detection capabilities, which uses built-in behavioral analytics and machine learning to identify attacks and zero-day exploits, access and application controls to reduce exposure to network attacks and malware, and more.

Scenario: Security Operations Requirements

Litware must be able to customize the operating system security configurations in Azure Security Center. References:

<https://docs.microsoft.com/en-us/azure/security-center/security-center-pricing>

Question Set 3

NEW QUESTION 21

HOTSPOT

You suspect that users are attempting to sign in to resources to which they have no access.

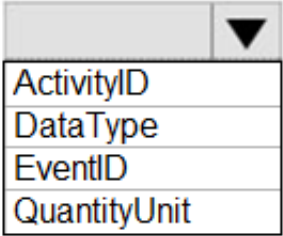
You need to create an Azure Log Analytics query to identify failed user sign-in attempts from the last three days. The results must only show users who had more than five failed sign-in attempts.

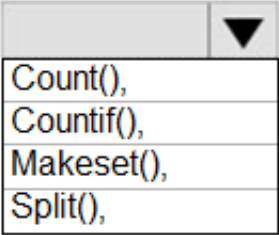
How should you configure the query? To answer, select the appropriate options in the answer area.

NOTE: Each correct selection is worth one point.

Hot Area:

Answer Area

```
let timeframe = 3d;
SecurityEvent
| where TimeGenerated > ago(3d)
| where AccountType == 'User' and  ==4625

| Summarize failed_login_attempts= 

latest_failed_login=arg_max(TimeGenerated by Account
| where failed_login_attempts > 5
```

- A. Mastered
- B. Not Mastered

Answer: A

Explanation:

The following example identifies user accounts that failed to log in more than five times in the last day, and when they last attempted to log in. let timeframe = 1d; SecurityEvent

| where TimeGenerated > ago(1d)

| where AccountType == 'User' and EventID == 4625 // 4625 - failed log in

| summarize failed_login_attempts=count(), latest_failed_login=arg_max(TimeGenerated, Account) by Account

| where failed_login_attempts > 5

| project-away Account1

References:

<https://docs.microsoft.com/en-us/azure/azure-monitor/log-query/examples>

NEW QUESTION 22

You need to configure WebApp1 to meet the data and application requirements.

Which two actions should you perform? Each correct answer presents part of the solution.

NOTE: Each correct selection is worth one point.

- A. Upload a public certificate.
- B. Turn on the HTTPS Only protocol setting.
- C. Set the Minimum TLS Version protocol setting to 1.2.
- D. Change the pricing tier of the App Service plan.
- E. Turn on the Incoming client certificates protocol setting.

Answer: AC

Explanation:

A: To configure Certificates for use in Azure Websites Applications you need to upload a public Certificate.

C: Over time, multiple versions of TLS have been released to mitigate different vulnerabilities. TLS 1.2 is the most current version available for apps running on Azure App Service.

Incorrect Answers:

B: We need support the http url as well.

Note:

WebApp1 is an Azure web app that is accessible by using <https://litwareinc.com> and <http://www.litwareinc.com>.

References:

<https://docs.microsoft.com/en-us/azure/app-service/app-service-web-configure-tls-mutual-auth>

<https://azure.microsoft.com/en-us/updates/app-service-and-functions-hosted-apps-can-now-update-tls-versions/>

NEW QUESTION 26

HOTSPOT

You need to create Role1 to meet the platform protection requirements.

How should you complete the role definition of Role1? To answer, select the appropriate options in the answer area.

NOTE: Each correct selection is worth one point.

Hot Area:

Answer Area

```
(
  "Name" | "Role1",
  "Id" | "11111111-1111-1111-1111-111111111111",
  "IsCustom" : true,
  "Description": "VM storage operator"
  "Actions" : [
    [
      "Microsoft.Compute/disks/*",
      "Microsoft.Resources/storageAccounts/*",
      "Microsoft.Storage/virtualMachines/disks/*"
    ],
    "NotActions": [
      ],
    "AssignableScopes" : [
      ]
  ]
}
```

- A. Mastered
- B. Not Mastered

Answer: A

Explanation:

Scenario: A new custom RBAC role named Role1 must be used to delegate the administration of the managed disks in Resource Group1. Role1 must be available only for Resource Group1.

Azure RBAC template managed disks "Microsoft.Storage/" References:

<https://blogs.msdn.microsoft.com/azureedu/2017/02/11/new-managed-disk-storage-option-for-your-azure-vms/>

NEW QUESTION 31

Your company has an Azure subscription named Sub1 that is associated to an Azure Active Directory Azure (Azure AD) tenant named contoso.com.

The company develops a mobile application named App1. App1 uses the OAuth 2 implicit grant type to acquire Azure AD access tokens. You need to register App1 in Azure AD.

What information should you obtain from the developer to register the application?

- A. a redirect URI
- B. a reply URL
- C. a key
- D. an application ID

Answer: A

Explanation:

For Native Applications you need to provide a Redirect URI, which Azure AD will use to return token responses.

References:

<https://docs.microsoft.com/en-us/azure/active-directory/develop/v1-protocols-oauth-code>

NEW QUESTION 32

From the Azure portal, you are configuring an Azure policy.

You plan to assign policies that use the DeployIfNotExist, AuditIfNotExist, Append, and Deny effects. Which effect requires a managed identity for the assignment?

- A. AuditIfNotExist
- B. Append
- C. DeployIfNotExist
- D. Deny

Answer: C

Explanation:

When Azure Policy runs the template in the deployIfNotExists policy definition, it does so using a managed identity.

References:

<https://docs.microsoft.com/bs-latn-ba/azure/governance/policy/how-to/remediate-resources>

NEW QUESTION 37

You have a hybrid configuration of Azure Active Directory (Azure AD).

All users have computers that run Windows 10 and are hybrid Azure AD joined.

You have an Azure SQL database that is configured to support Azure AD authentication.

Database developers must connect to the SQL database by using Microsoft SQL Server Management Studio (SSMS) and authenticate by using their on-premises Active Directory account.

You need to tell the developers which authentication method to use to connect to the SQL database from SSMS. The solution must minimize authentication prompts.

Which authentication method should you instruct the developers to use?

- A. SQL Login
- B. Active Directory – Universal with MFA support
- C. Active Directory – Integrated
- D. Active Directory – Password

Answer: C

Explanation:

Azure AD can be the initial Azure AD managed domain. Azure AD can also be an on-premises Active Directory Domain Services that is federated with the Azure AD.

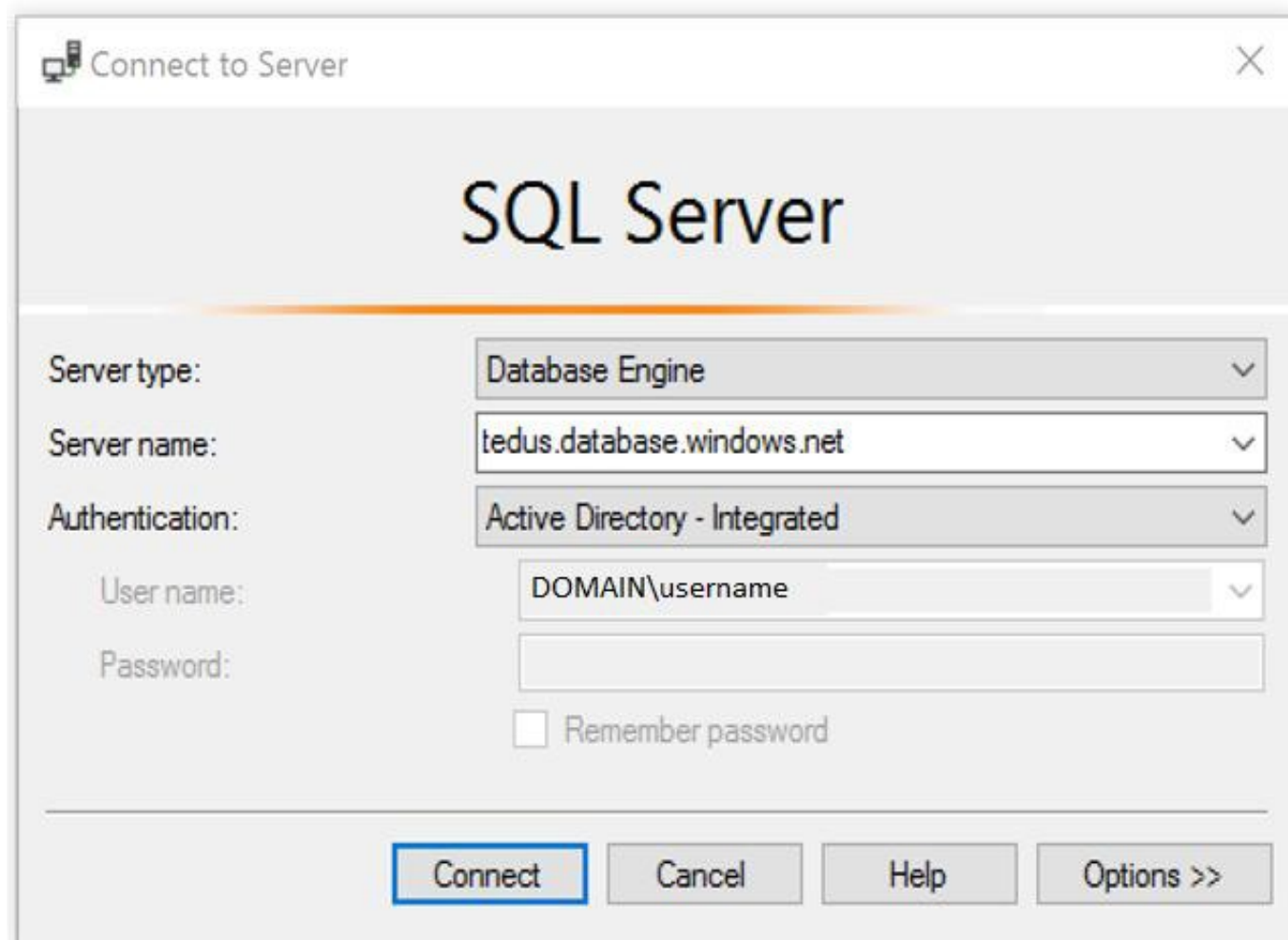
Using an Azure AD identity to connect using SSMS or SSDT

The following procedures show you how to connect to a SQL database with an Azure AD identity using SQL Server Management Studio or SQL Server Database Tools.

Active Directory integrated authentication

Use this method if you are logged in to Windows using your Azure Active Directory credentials from a federated domain.

1. Start Management Studio or Data Tools and in the Connect to Server (or Connect to Database Engine) dialog box, in the Authentication box, select Active Directory - Integrated. No password is needed or can be entered because your existing credentials will be presented for the connection.



2. Select the Options button, and on the Connection Properties page, in the Connect to database box, type the name of the user database you want to connect to. (The AD domain name or tenant ID" option is only supported for Universal with MFA connection options, otherwise it is greyed out.)

References:

<https://github.com/MicrosoftDocs/azure-docs/blob/master/articles/sql-database/sql-database-aad-authentication-configure.md>

NEW QUESTION 41

DRAG DROP

You have an Azure subscription named Sub1 that contains an Azure Storage account named Contosostorage1 and an Azure key vault named Contosokeyvault1.

You plan to create an Azure Automation runbook that will rotate the keys of Contosostorage1 and store them in Contosokeyvault1.

You need to implement prerequisites to ensure that you can implement the runbook.

Which three actions should you perform in sequence? To answer, move the appropriate actions from the list of actions to the answer area and arrange them in the correct order.

Select and Place:

Actions	Answer Area
Run Set-AzureRmKeyVaultAccessPolicy	
Create an Azure Automation account.	
Import PowerShell modules to the Azure Automation account.	⬅️ ⬆️
Create a user-assigned managed identity.	
Create a connection resource in the Azure Automation account.	

- A. Mastered
B. Not Mastered

Answer: A

Explanation:

Step 1: Create an Azure Automation account

Runbooks live within the Azure Automation account and can execute PowerShell scripts.

Step 2: Import PowerShell modules to the Azure Automation account

Under 'Assets' from the Azure Automation account Resources section select 'to add in Modules to the runbook. To execute key vault cmdlets in the runbook, we need to add AzureRM.profile and AzureRM.key vault.

Step 3: Create a connection resource in the Azure Automation account

You can use the sample code below, taken from the AzureAutomationTutorialScript example runbook, to authenticate using the Run As account to manage Resource Manager resources with your runbooks. The AzureRunAsConnection is a connection asset automatically created when we created 'run as accounts' above. This can be found under Assets -> Connections. After the authentication code, run the same code above to get all the keys from the vault.

```
$connectionName = "AzureRunAsConnection" try
{
# Get the connection "AzureRunAsConnection "
$servicePrincipalConnection=Get-AutomationConnection -Name $connectionName
"Logging in to Azure..." Add-AzureRmAccount `
-ServicePrincipal `
-TenantId $servicePrincipalConnection.TenantId `
-ApplicationId $servicePrincipalConnection.ApplicationId `
-CertificateThumbprint $servicePrincipalConnection.CertificateThumbprint
}
```

References:

<https://www.rahulpnath.com/blog/accessing-azure-key-vault-from-azure-runbook/>

NEW QUESTION 43

HOTSPOT

You have the Azure Information Protection conditions shown in the following table.

Name	Pattern	Case sensitivity
Condition1	White	On
Condition2	Black	Off

You have the Azure Information Protection labels shown in the following table.

Name	Applies to	Use label	Set the default label
Global	<i>Not applicable</i>	<i>None</i>	<i>None</i>
Policy1	User1	Label1	None
Policy2	User1	Label2	None

You need to identify how Azure Information Protection will label files.

What should you identify? To answer, select the appropriate options in the answer area.

NOTE: Each correct selection is worth one point.

Hot Area:

Answer Area

If User1 creates a Microsoft Word file that includes the text "Black and White", the file will be assigned:

	▼
No label	
Label1 only	
Label2 only	
Label1 and Label2	

If User1 creates a Microsoft Notepad file that includes the text "Black or white", the file will be assigned:

	▼
No label	
Label1 only	
Label2 only	
Label1 and Label2	

- A. Mastered
- B. Not Mastered

Answer: A

Explanation:

Box 1: Label 2 only

How multiple conditions are evaluated when they apply to more than one label

1. The labels are ordered for evaluation, according to their position that you specify in the policy: The label positioned first has the lowest position (least sensitive) and the label positioned last has the highest position (most sensitive).
2. The most sensitive label is applied.
3. The last sublabel is applied.

Box 2: No Label

Automatic classification applies to Word, Excel, and PowerPoint when documents are saved, and apply to Outlook when emails are sent. Automatic classification does not apply to Microsoft Notepad.

References:

<https://docs.microsoft.com/en-us/azure/information-protection/configure-policy-classification>

NEW QUESTION 46

Your company uses Azure DevOps.

You need to recommend a method to validate whether the code meets the company's quality standards and code review standards. What should you recommend implementing in Azure DevOps?

- A. branch folders
- B. branch permissions
- C. branch policies
- D. branch locking

Answer: C

Explanation:

Branch policies help teams protect their important branches of development. Policies enforce your team's code quality and change management standards.

References:

<https://docs.microsoft.com/en-us/azure/devops/repos/git/branch-policies?view=azure-devops&viewFallbackFrom=vsts>

NEW QUESTION 51

.....

Thank You for Trying Our Product

* 100% Pass or Money Back

All our products come with a 90-day Money Back Guarantee.

* One year free update

You can enjoy free update one year. 24x7 online support.

* Trusted by Millions

We currently serve more than 30,000,000 customers.

* Shop Securely

All transactions are protected by VeriSign!

100% Pass Your az-500 Exam with Our Prep Materials Via below:

<https://www.certleader.com/az-500-dumps.html>