

## Exam Questions 400-007

Cisco Certified Design Expert (CCDE v3.0) Written Exam

<https://www.2passeasy.com/dumps/400-007/>



### NEW QUESTION 1

A multicast network is sing Bidirectional PIM. Which two combined actions achieve high availability so that two RPs within the same network can act in a redundant manner? (Choose two)

- A. Use two phantom RP addresses
- B. Manipulate the administration distance of the unicast routes to the two RPs
- C. Manipulate the multicast routing table by creating static mroutes to the two RPs
- D. Advertise the two RP addresses in the routing protocol
- E. Use anycast RP based on MSDP peering between the two RPs
- F. Control routing to the two RPs through a longest match prefix

**Answer:** AF

### NEW QUESTION 2

Which purpose of a dynamically created tunnel interface on the design of IPv6 multicast services Is true?

- A. first-hop router registration to the RP
- B. multicast client registration to the RP
- C. multicast source registration to the RP
- D. transport of all IPv6 multicast traffic

**Answer:** D

### NEW QUESTION 3

Refer to the table.

CONNECTIVITY	CAPEX	OPEX ANNUAL	INSTALLATION FEE	TERM
DWDM over dark fiber	\$200,000	\$100,000	\$30,000	12 months
CWDM over dark fiber	\$150,000	\$100,000	\$25,000	18 months
MPLS wires only	\$50,000	\$180,000	\$5,000	12 months
Metro Ethernet	\$65,000	\$100,000	\$5,000	36 months

A customer investigates connectivity options for a DCI between two production data centers to aid a large-scale migration project. The migration is estimated to take 20 months to complete but might extend an additional 10 months if issues arise. All connectivity options meet the requirements to migrate workloads. Which transport technology provides the best ROI based on cost and flexibility?

- A. CWDM over dark fiber
- B. MPLS
- C. DWDM over dark fiber
- D. Metro Ethernet

**Answer:** D

### NEW QUESTION 4

Which BGP feature provides fast convergence?

- A. BGP PIC |
- B. BGP-EVPN
- C. BGP FlowSpec
- D. BGP-LS

**Answer:** A

### NEW QUESTION 5

Which two advantages of using DWDM over traditional optical networks are true? (Choose two.)

- A. inherent topology flexibility and service protection provided without penalty through intelligent oversubscription of bandwidth reservation
- B. ability to expand bandwidth over existing optical Infrastructure
- C. inherent topology flexibility with built-in service protection
- D. inherent topology flexibility with intelligent chromatic dispersion
- E. inherent topology flexibility with a service protection provided through a direct integration with an upper layer protocol

**Answer:** BC

### NEW QUESTION 6

You are tasked with the design of a high available network. Which two features provide fail closed environments? (Choose two.)

- A. EIGRP
- B. RPVST+

- C. MST
- D. L2MP

**Answer:** AB

#### NEW QUESTION 7

Which technology is an open-source infrastructure automation tool that automates repetitive tasks for users who work in networks such as cloud provisioning and intraservice orchestration?

- A. Ansible
- B. Contrail
- C. Java
- D. Jinja2

**Answer:** A

#### NEW QUESTION 8

Company XYZ needs advice in redesigning their legacy Layer 2 infrastructure.

Which technology should be included in the design to minimize or avoid convergence delays due to STP or FHRP and provide a loop-free topology?

- A. Use switch clustering in the access layer.
- B. Use switch clustering in the core/distribution layer.
- C. Use spanning-tree PortFast.
- D. Use BFD.

**Answer:** B

#### NEW QUESTION 9

What is the most important operational driver in building a resilient and secure modular network design?

- A. Dependencies on hardware or software that is difficult to scale
- B. Minimize app downtime
- C. Reduce the frequency of failures requiring human intervention
- D. Increase time spent on developing new features

**Answer:** C

#### NEW QUESTION 10

Organizations that embrace Zero Trust initiatives ranging from business policies to technology infrastructure can reap business and security benefits.

Which two domains should be covered under Zero Trust initiatives? (Choose two)

- A. workload
- B. work domain
- C. workplace
- D. workgroup
- E. workspace

**Answer:** AC

#### NEW QUESTION 10

Which two types of planning approaches are used to develop business-driven network designs and to facilitate the design decisions? (Choose two)

- A. cost optimization approach
- B. strategic planning approach
- C. modular approach
- D. tactical planning approach
- E. business optimization approach

**Answer:** BD

#### NEW QUESTION 11

An architect receives a business requirement from a CTO that states the RTO and RPO for a new system should be as close as possible to zero.

Which replication method and data center technology should be used?

- A. asynchronous replication over dual data centers via DWDM
- B. synchronous replication over geographically dispersed dual data centers via MPLS
- C. synchronous replication over dual data centers via Metro Ethernet
- D. asynchronous replication over geographically dispersed dual data centers via CWDM

**Answer:** C

#### NEW QUESTION 14

A European national bank considers migrating its on-premises systems to a private cloud offering in a non-European location to significantly reduce IT costs.

What is a primary factor prior to migration?

- A. data governance
- B. additional latency
- C. security
- D. cloud connectivity

**Answer:** A

#### NEW QUESTION 15

Company XYZ has 30 sites running a legacy private WAN architecture that connects to the Internet via multiple highspeed connections. The company is now redesigning their network and must comply with these design requirements:

- Use a private WAN strategy that allows the sites to connect to each other directly and caters for future expansion.
- Use the Internet as the underlay for the private WAN. Securely transfer the corporate data over the private WAN.

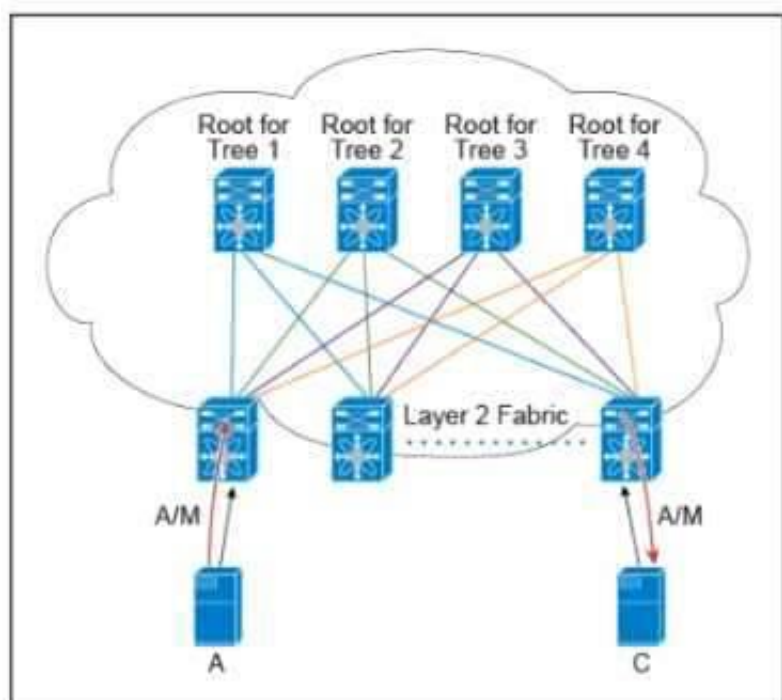
Which two technologies should be Incorporated into the design of this network? (Choose two.)

- A. S-VTI
- B. IPsec
- C. DMVPN
- D. GET VPN
- E. PPTP

**Answer:** BC

#### NEW QUESTION 16

Refer to the exhibit. There are multiple trees in the Cisco FabricPath. All switches in the Layer 2 fabric share the same view of each tree. Which two concepts describe how the multicast traffic is load-balanced across this topology? (Choose two )



- A. A specific (S,G) traffic is not load-balanced
- B. All trees are utilized at the same level of the traffic rate
- C. Every leaf node assigns the specific (S,G) to the same tree.
- D. A specific (S,G) multicast traffic is load-balanced across all trees due to better link utilization efficiency.
- E. The multicast traffic is generally load-balanced across all trees

**Answer:** BD

#### NEW QUESTION 17

Which design principal improves network resiliency?

- A. Added load-balancing
- B. Added redundancy
- C. Added confidentiality
- D. Added reliability

**Answer:** B

#### NEW QUESTION 18

Which two foundational aspects of IoT are still evolving and being worked on by the industry at large? (Choose two)

- A. WiFi protocols
- B. Regulatory domains
- C. Low energy Bluetooth sensors
- D. IoT consortia
- E. Standards

**Answer:** AC

#### NEW QUESTION 20

You were tasked to enhance the security of a network with these characteristics:

- A pool of servers is accessed by numerous data centers and remote sites
- The servers are accessed via a cluster of firewalls
- The firewalls are configured properly and are not dropping traffic
- The firewalls occasionally cause asymmetric routing of traffic within the server data center.

Which technology should you recommend to enhance security by limiting traffic that could originate from a hacker compromising a workstation and redirecting flows at the servers?

- A. Poison certain subnets by adding static routes to Null0 on the core switches connected to the pool of servers.
- B. Deploy uRPF strict mode.
- C. Limit sources of traffic that exit the server-facing interface of the firewall cluster with ACLs.
- D. Deploy uRPF loose mode

**Answer: C**

#### NEW QUESTION 22

A network architect must redesign a service provider edge, where multiservice and multitenant PEs are currently present. Which design feature should be minimized in the new design to achieve reliability?

- A. bridging
- B. fate sharing
- C. redundancy
- D. unicast overlay routing

**Answer: B**

#### NEW QUESTION 25

You are designing a network running both IPv4 and IPv6 to deploy QoS. Which consideration is correct about the QoS for IPv4 and IPv6?

- A. IPv4 and IPv6 traffic types can use queuing mechanisms such as LLQ, PQ and CQ.
- B. IPv6 packet classification is only available with process switching, whereas IPv4 packet classification is available with both process switching and CEF.
- C. IPv6 and IPv4 traffic types can use a single QoS policy to match both protocols
- D. Different congestion management mechanisms need to be used for IPv4 and IPv6 traffic types

**Answer: C**

#### NEW QUESTION 29

A Service Provider is designing a solution for a managed CE service to a number of local customers using a single CE platform and wants to have logical separation on the CE platform using Virtual Routing and Forwarding (VRF) based on IP address ranges or packet length. Which is the most scalable solution to provide this type of VRF Selection process on the CE edge device?

- A. Static Routes for Route Leaking
- B. Policy Based Routing
- C. OSPF per VRF Instance
- D. Multi-Protocol BGP

**Answer: B**

#### NEW QUESTION 33

An MPLS service provider is offering a standard EoMPLS-based VPLS service to CustomerA providing Layer 2 connectivity between a central site and approximately 100 remote sites. CustomerA wants to use the VPLS network to carry its internal multicast video feeds which are sourced at the central site and consist of 20 groups at Mbps each. Which service provider recommendation offers the most scalability?

- A. EoMPLS-based VPLS can carry multicast traffic in a scalable manner
- B. Use a mesh of GRE tunnels to carry the streams between sites
- C. Enable snooping mechanisms on the provider PE routers.
- D. Replace VPLS with a Layer 3 MVPN solution to carry the streams between sites

**Answer: D**

#### NEW QUESTION 34

A customer asks you to perform a high level review of their upcoming WAN refresh for remote sites. The review is specially focused on their retail store operations consisting of 500+ locations connected via multipoint IPsec VPN solution. Which routing protocol would be valid but would also be the most restrictive for the expansion of this deployment model?

- A. EIGRP
- B. IS-IS
- C. OSPF
- D. BGP

**Answer: B**

#### NEW QUESTION 36

Which protocol does an SD-Access wireless Access Point use for its fabric data plane?



- A. GRE
- B. MPLS
- C. VXLAN
- D. LISP
- E. CAPWAP

**Answer:** C

#### NEW QUESTION 39

VPLS is implemented in a Layer 2 network with 2000 VLANs.

What is the primary concern to ensure successful deployment of VPLS?

- A. Flooding is necessary to propagate MAC address reachability information
- B. PE scalability
- C. The underlying transport mechanism
- D. VLAN scalability

**Answer:** B

#### NEW QUESTION 43

How many fully established neighbour relationships exist on an Ethernet with five routers running OSPF as network type broadcast?

- A. 5
- B. 6
- C. 7
- D. 10
- E. 20

**Answer:** C

#### NEW QUESTION 46

An existing wireless network was designed to support data traffic only.

You must now install context Aware services for location tracking changes must be applied to the existing wireless network to increase the location accuracy?  
(Chose two)

- A. Add access points along the perimeter of the coverage area.
- B. Increase the access point density to create an average inter-access point distance of less than 40feet or 12.2 meters
- C. Use directional antennas to provide more cell overlapping
- D. Install additional access points in monitor mode where the co-channel interference wouldotherwise be affected
- E. Fine tune the radio configuration of the access point to have a higher average transmission powerto achieve better coverage

**Answer:** BE

#### NEW QUESTION 50

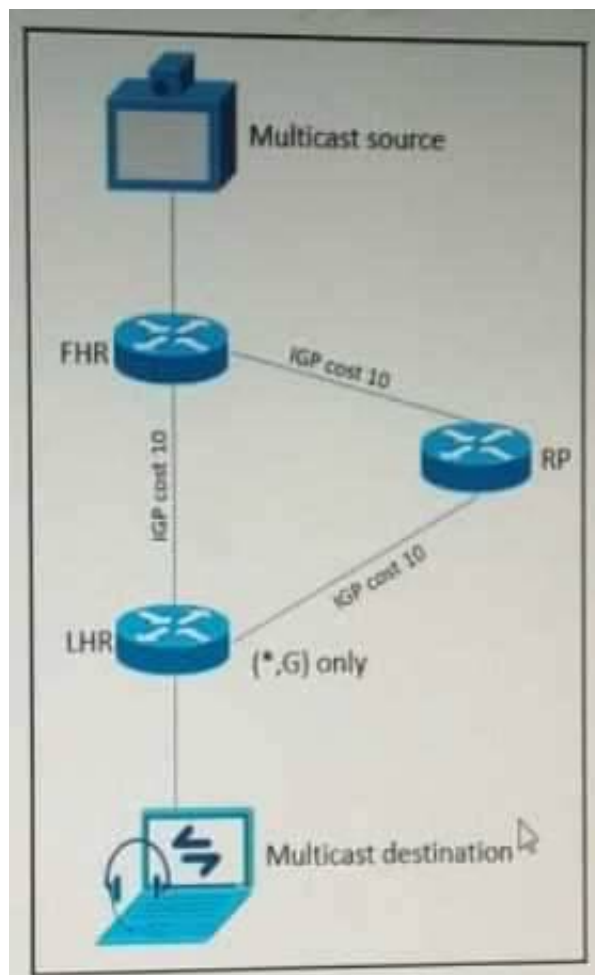
Which statement about hot-potato routing architecture design is true?

- A. Hot-potato routing is the preferred architecture when connecting to content providers
- B. Hop-potato keeps traffic under the control of the network administrator for longer
- C. OSPF uses hot-potato routing if all ASBRs use the same value for the external metric
- D. Hot-potato routing is prone to misconfiguration as well as poor coordination between twonetworks

**Answer:** A

#### NEW QUESTION 55

Refer to the exhibit.



As part of a redesign project, you must predict multicast behavior.

What happens to the multicast traffic received on the shared tree (\*,G), if it is received on the LHR interface indicated\*?

- A. It is dropped due to an unsuccessful RPF check against the multicast source
- B. It is switched give that no RPF check is performed
- C. It is switched due to a successful RPF check against the routing table
- D. It is dropped due to an unsuccessful RPF check against the multicast receiver.

**Answer:** C

#### NEW QUESTION 60

Which two application requirements are mandatory for traffic to receive proper treatment when placed in the priority queue? (Choose two.)

- A. small transactions (HTTP-like behavior)
- B. WRED drop treatment
- C. tolerance to packet loss
- D. intolerance to jitter
- E. TCP-based application

**Answer:** AD

#### NEW QUESTION 64

Which two descriptions of CWDM are true? (Choose two)

- A. typically used over long distances, but requires optical amplification
- B. uses the 850nm band
- C. allows up to 32 optical carriers to be multiplexed onto a single fiber
- D. shares the same transmission window as DWDM
- E. Passive CWDM devices require no electrical power

**Answer:** DE

#### NEW QUESTION 67

SD-WAN can be used to provide secure connectivity to remote offices, branch offices, campus networks, data centers, and the cloud over any type of IP-based underlay transport network. Which two statements describe SD WAN solutions? (Choose two.)

- A. SD-WAN networks are inherently protected against slow performance.
- B. Control and data forwarding planes are kept separate.
- C. Improved operational efficiencies result in cost savings.
- D. Solutions include centralized orchestration, control, and zero-touch provisioning.
- E. Solutions allow for variations of commodity and specialized switching hardware.

**Answer:** BD

#### NEW QUESTION 70

Which three tools are used for ongoing monitoring and maintenance of a voice and video environment? (Choose three.)

- A. flow-based analysis to measure bandwidth mix of applications and their flows
- B. call management analysis to identify network convergence-related failures
- C. call management analysis to identify CAC failures and call quality issues

- D. active monitoring via synthetic probes to measure loss, latency, and jitter
- E. passive monitoring via synthetic probes to measure loss, latency, and jitter
- F. flow-based analysis with PTP time-stamping to measure loss, latency, and jitter

**Answer:** ACD

#### NEW QUESTION 72

Company XYZ is in the process of identifying which transport mechanism(s) to use as their WAN technology. Their main two requirements are.

- a technology that could offer DPI, SLA, secure tunnels, privacy, QoS, scalability, reliability, and ease of management
- a technology that is cost-effective

Which WAN technology(ies) should be included in the design of company XYZ?

- A. Software-defined WAN should be the preferred choice because it complements both technologies, covers all the required features, and it is the most cost-effective solution.
- B. Internet should be the preferred option because it is cost effective and supports BFD, IP SL
- C. andIPsec for secure transport over the public Internet.
- D. Both technologies should be use
- E. Each should be used to back up the other one; where theprimary links are MPLS, the internet should be used as a backup link with IPsec (and vice versa).
- F. MPLS meets all these requirements and it is more reliable than using the Interne
- G. It is widelyused with defined best practices and an industry standard.

**Answer:** A

#### NEW QUESTION 76

The network designer needs to use GLOP IP address in order make them unique within their ASN, which multicast address range will be considered?

- A. 239.0.0.0 to 239.255.255.255
- B. 224.0.0.0 to 224.0.0.255
- C. 233.0.0.0 to 233.255.255.255
- D. 232.0.0.0 to 232.255.255.255

**Answer:** C

#### NEW QUESTION 80

Drag and Drop Question

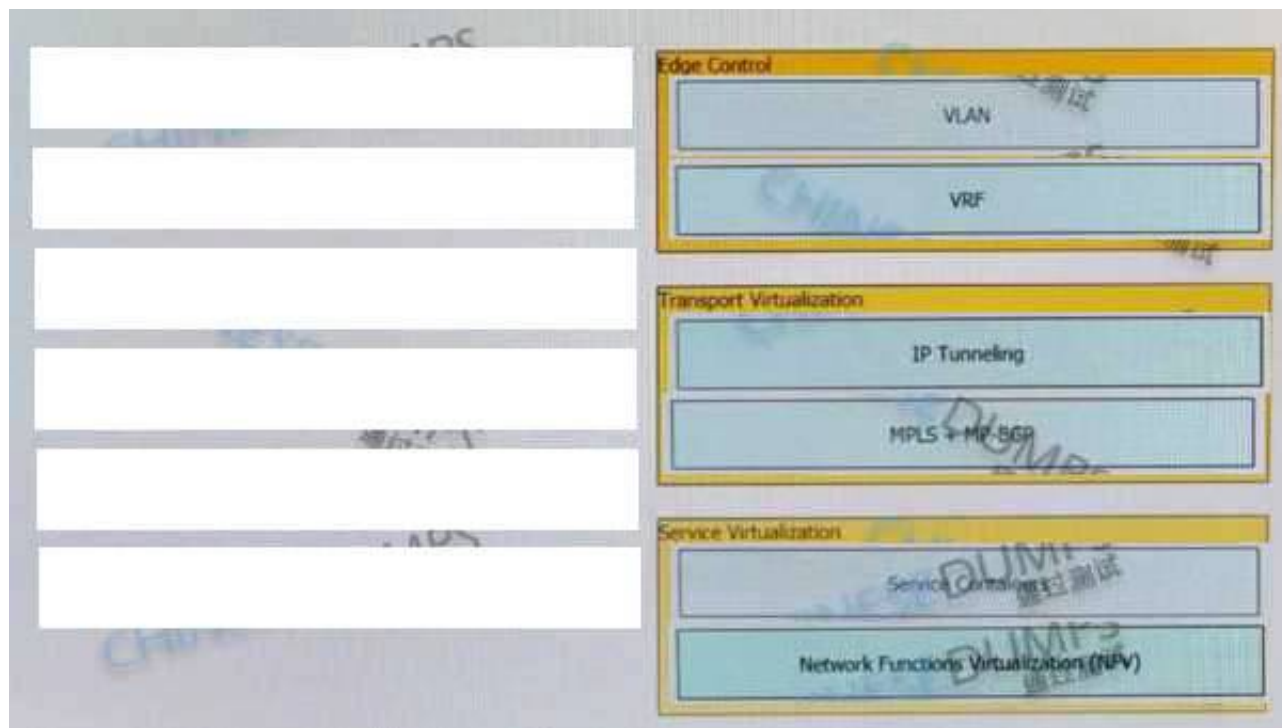
Drag and drop the end-to-end network virtualization elements from the left onto the correct network areas on the right.

- A. Mastered
- B. Not Mastered

**Answer:** A

**Explanation:**





NEW QUESTION 81

.....

## THANKS FOR TRYING THE DEMO OF OUR PRODUCT

Visit Our Site to Purchase the Full Set of Actual 400-007 Exam Questions With Answers.

We Also Provide Practice Exam Software That Simulates Real Exam Environment And Has Many Self-Assessment Features. Order the 400-007 Product From:

<https://www.2passeasy.com/dumps/400-007/>

## Money Back Guarantee

### 400-007 Practice Exam Features:

- \* 400-007 Questions and Answers Updated Frequently
- \* 400-007 Practice Questions Verified by Expert Senior Certified Staff
- \* 400-007 Most Realistic Questions that Guarantee you a Pass on Your FirstTry
- \* 400-007 Practice Test Questions in Multiple Choice Formats and Updatesfor 1 Year