

Exam Questions PL-600

Microsoft Power Platform Solution Architect

<https://www.2passeasy.com/dumps/PL-600/>



NEW QUESTION 1

- (Topic 1)

You need to investigate the canvas app functionality issues.

Which two tools can you use? Each correct answer presents a complete solution.

NOTE: Each correct selection is worth one point.

- A. App checker
- B. Errors function
- C. Solution checker
- D. Power Platform admin center

Answer: AC

Explanation:

Scenario: The testing team reports that one of the canvas apps is not working as expected. An error message displays as specific pages load.

A: The App checker is now available to help provide a clear list of formula issues in your app, and to provide items to fix to make your app accessible. The App checker is an area that the PowerApps team will continue to invest in, and build on in order help to make debugging, performance and best practice decisions an easier and more guided experience.

C: With the solution checker feature, you can perform a rich static analysis check on your solutions against a set of best practice rules and quickly identify these problematic patterns. After the check completes, you receive a detailed report that lists the issues identified, the components and code affected, and links to documentation that describes how to resolve each issue.

Reference:

<https://powerapps.microsoft.com/en-us/blog/new-app-checker-helps-you-fix-errors-and-make-accessible-apps/>

NEW QUESTION 2

HOTSPOT - (Topic 1)

You need to recommend methods to resolve the organization's issues.

What should you recommend? To answer, select the appropriate options in the answer area.

NOTE: Each correct selection is worth one point.

Issue	Resolution method
Users cannot see Power BI reports.	<div> <input type="text"/> </div> <div> Add users to Microsoft 365. Assign Power BI licenses to users. Configure an on-premises data gateway. </div>
Historical data does not appear in reports.	<div> <input type="text"/> </div> <div> Configure Azure Data Lake. Configure a custom connector. Configure an on-premises data gateway. </div>

Answer:

Issue	Resolution method
Users cannot see Power BI reports.	<div><div></div><div>Add users to Microsoft 365. Assign Power BI licenses to users. Configure an on-premises data gateway.</div></div>
Historical data does not appear in reports.	<div><div></div><div>Configure Azure Data Lake. Configure a custom connector. Configure an on-premises data gateway.</div></div>

- A. Mastered
- B. Not Mastered

Answer: A

Explanation:

Box 1: Add users to Microsoft 365.
Scenario: Users cannot view Power BI reports within the Power Platform apps.
Issue: The people you share with may see a locked tile in a dashboard, or a "Permission required" message when they try to view a report.
Solution: You need to grant them permission to the underlying dataset.
? Go to the All or the Datasets + dataflows tab in your content list.
? Select More options (...) next to a dataset, then select Manage permissions.
? Select Add user.
? Enter the full email addresses for individuals, distribution groups, or security groups.
? Select Grant access.

Box 2: Configure an on-premises data gateway.

Scenario: The company plans to reference historical data in the [on-premises] existing system. The records held in these systems will not be migrated to the new solution except for medication information.
The on-premises data gateway acts as a bridge to provide quick and secure data transfer between on-premises data (data that isn't in the cloud) and several Microsoft cloud services. These cloud services include Power BI, PowerApps, Power Automate, Azure Analysis Services, and Azure Logic Apps. By using a gateway, organizations can keep databases and other data sources on their on-premises networks, yet securely use that on- premises data in cloud services.

NEW QUESTION 3

DRAG DROP - (Topic 1)
You need to recommend methods for assigning security to each group of users.
What should you recommend? To answer, drag the appropriate methods to the correct groups of users. Each method may be used once, more than once, or not at all. You may need to drag the split bar between panes or scroll to view content.
NOTE: Each correct selection is worth one point.

Methods	Answer Area	
	Group of users	Method
Dataverse Application User	Full-time employees	Method
Power Platform Local Business Owner Team	Automation	Method
Azure Active Directory B2B Guest Access	Corporate governance auditing team	Method
Azure Active Directory Security Group Team		

- A. Mastered
B. Not Mastered

Answer: A

Explanation:

Box 1: Power Platform Local Business Owner Team

Owner team: An owner team owns records and has security roles assigned to the team. A user's privileges can come from their individual security roles, those of the teams that they're part of or the ones they inherit. A team has full access rights on the records that the team owns. Team members are added manually to the owner team.

Scenario: Employee authentication with the existing system is provided by an on-premises Active Directory instance that is linked to Azure Active Directory.

Box 2: Azure Active Directory Security Group Team

An Azure Active Directory (Azure AD) group team. Similar to owner team, an Azure AD group team can own records and can have security roles assigned to the team.

Note: The administration of app and data access for Microsoft Dataverse has been extended to allow administrators to use their organization's Azure Active Directory (Azure AD) groups to manage access rights for licensed Dataverse users.

Box 3: Azure Active Directory B2B Guest Access

An Azure AD B2B collaboration user is an external user, typically from a partner organization, that you invite to sign into your Azure AD organization using their own credentials. This B2B collaboration user (also generally referred to as a guest user) can then access the apps and resources you want to share with them. A user object is created for the B2B collaboration user in the same directory as your employees. B2B collaboration user objects have limited privileges in your directory by default, and they can be managed like employees, added to groups, and so on.

Scenario: Before First Up signs a contract to place workers at a client company, a member of the audit team visits the company and interviews company management. Audit members use different types of devices including Android and iOS devices. First Up has no plans to require the use of a single type of device.

NEW QUESTION 4

DRAG DROP - (Topic 2)

You need to propose a solution for form requirements.

What should you recommend? To answer, drag the appropriate solutions to the correct requirements. Each solution may be used once, more than once, or not at all. You may need to drag the split bar between panes or scroll to view content.

NOTE: Each correct selection is worth one point.

Solutions	Requirement	Solution
Field controls	Phone number format	
Workflow	Sections of Agents case form	
Custom development		

- A. Mastered
B. Not Mastered

Answer: A

Explanation:

Box 1: Field controls

You must standardize the format used by agents to enter customer phone numbers.

Box 2: Workflow

Log issues as cases. The case form must show variable sections based on the case type.

NEW QUESTION 5

- (Topic 2)

You need to provide the IT team and managers with a mobile solution. How many apps should you recommend?

A.

one app for each job role

B. one app for each user

C. one app for all employees of the team

D. one app for each team of employees

Answer: A

Explanation:

Scenario: IT staff needs a mobile solution to see IT cases at the top of the menu since this is their primary focus. Managers need to see all customer dashboards at the top of their menu on their mobile device.

NEW QUESTION 6

- (Topic 2)

You need to recommend the field type to use for configuring meal selections during reservation.

Which field type should you recommend?

A. Mastered

B. Not Mastered

Answer: A

Explanation:

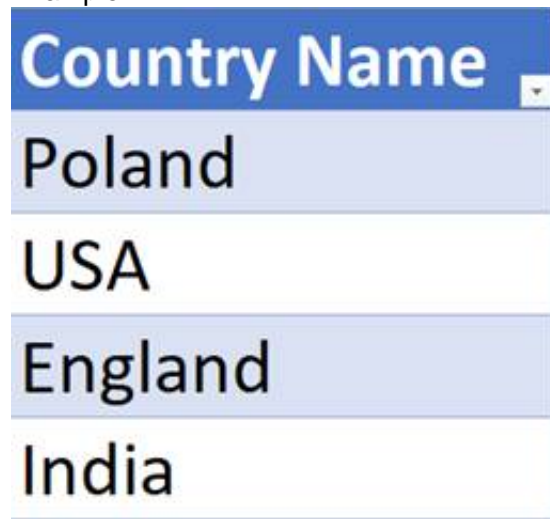
Scenario:

? Customers can select a meal when they make a reservation and can save the meal choices as a customer preference.

? The company offers two types of meals: standard and vegetarian. Meal types can be temporarily unavailable. The airline is considering offering other meal types, such as gluten-free and low-sodium options.

In PowerApps Option set is one of the field types you can use in your Entity. The information type that Option Set stores is a list of text values. And here comes the Option Set advantage – once you define its text values you can centrally managed it.

Example:



Reference:

<https://michalguzowski.pl/how-to-work-with-option-set-in-powerapps/>

NEW QUESTION 7

- (Topic 2)

You need to recommend a solution for agents when working with customers to make reservations.

What should you recommend?

- A. task flows
- B. Business Process Flows
- C. workflows
- D. Power Automate

Answer: B

Explanation:

Business process flows provide a guide for people to get work done. They provide a streamlined user experience that leads people through the processes their organization has defined for interactions that need to be advanced to a conclusion of some kind.

Use business process flows to define a set of steps for people to follow to take them to a desired outcome.

With business processes flows available as an entity, you can now use advanced finds, views, charts, and dashboards sourced from business process flow data for a given entity, such as a lead or opportunity.

Scenario:

? Agents need a solution to replace paper reservation checklists.

? Agents need dashboards to show a current count of all reservations on the entity.

? Agents need a way to track reservation issues.

? Agents need a visual indicator in the interface to determine the reservation step to provide a seamless customer experience.

NEW QUESTION 8

- (Topic 2)

You need to provide the IT specialists with design diagrams. What should you provide?

- A. Business process modeler (BPM) B AI Builder
- B. Entity relationship diagram (ERD)
- C. Dynamics 365 Product Visualize

Answer: A

Explanation:

Scenario: IT specialists want to design Power BI reports. They need to understand the underlying table relationships of the system. Business process modeler (BPM) in Microsoft Dynamics Lifecycle Services (LCS) is a tool that you can use to create, view, and modify repeatable implementations that are based on business process libraries. BPM helps you align your business processes with industry- standard processes that are described by the American Productivity & Quality Center

(APQC)

Reference:
https://docs.microsoft.com/en-us/dynamics365/fin-ops-core/dev-itpro/lifecycle- services/bpm-overview

NEW QUESTION 9

- (Topic 3)
You need to recommend a solution for creating the initial inspection checklists. What should you recommend?

- A. Power Apps Maker portal
- B. Dataverse for Teams
- C. Power Apps Studio
- D. Data Migration utility

Answer: B

Explanation:

Scenario: Standardized checklists must be stored in the solution for use by inspectors. A copy must be created when a new inspection is initiated. Dataverse for Teams – built on Microsoft Dataverse – provides relational data storage, rich data types, enterprise-grade governance, and one-click solution deployment to the Microsoft Teams app store. Dataverse for teams table creation has all of the things that are great about Microsoft Lists, without the major downsides. Reference:
https://docs.microsoft.com/en-us/powerapps/teams/create-table

NEW QUESTION 10

HOTSPOT - (Topic 3)
You need to recommend a solution to meet user interface requirements. What should you recommend? To answer, select the appropriate options in the answer area. NOTE: Each correct selection is worth one point.

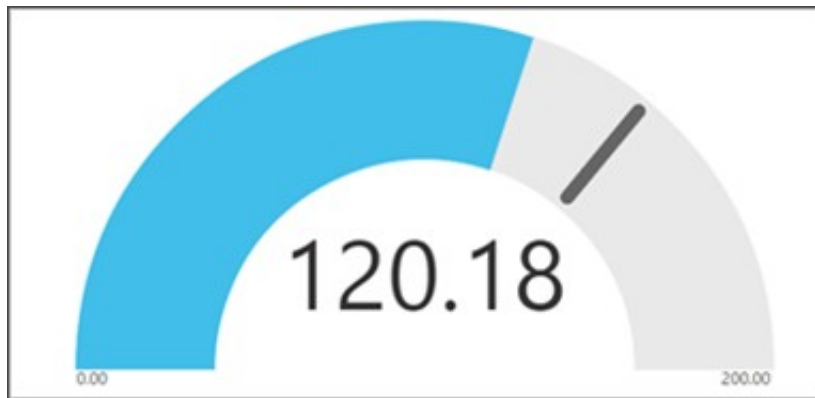
Requirement	Solution
Visual representation of gauge readings with minimum and maximum tolerances.	<div><div></div><div>Create and embed a Power BI radial gauge. Create and embed a custom visualization component. Create and embed a standard Power Apps donut chart.</div></div>
Add visibility to the manufacturing inspection records for onsite technicians.	<div><div></div><div>Configure mobile offline synchronization. Add an inspection order to the work order form Modify the sitemap for Dynamics 365 Field Service.</div></div>

- A. Mastered
- B. Not Mastered

Answer: A

Explanation:

Box 1: Create and embed a Power Bi radial gauge
A radial gauge chart has a circular arc and shows a single value that measures progress toward a goal or a Key Performance Indicator (KPI). The line (or needle) represents the goal or target value. The shading represents the progress toward that goal. The value inside the arc represents the progress value. Power BI spreads all possible values evenly along the arc, from the minimum (left-most value) to the maximum (right-most value).



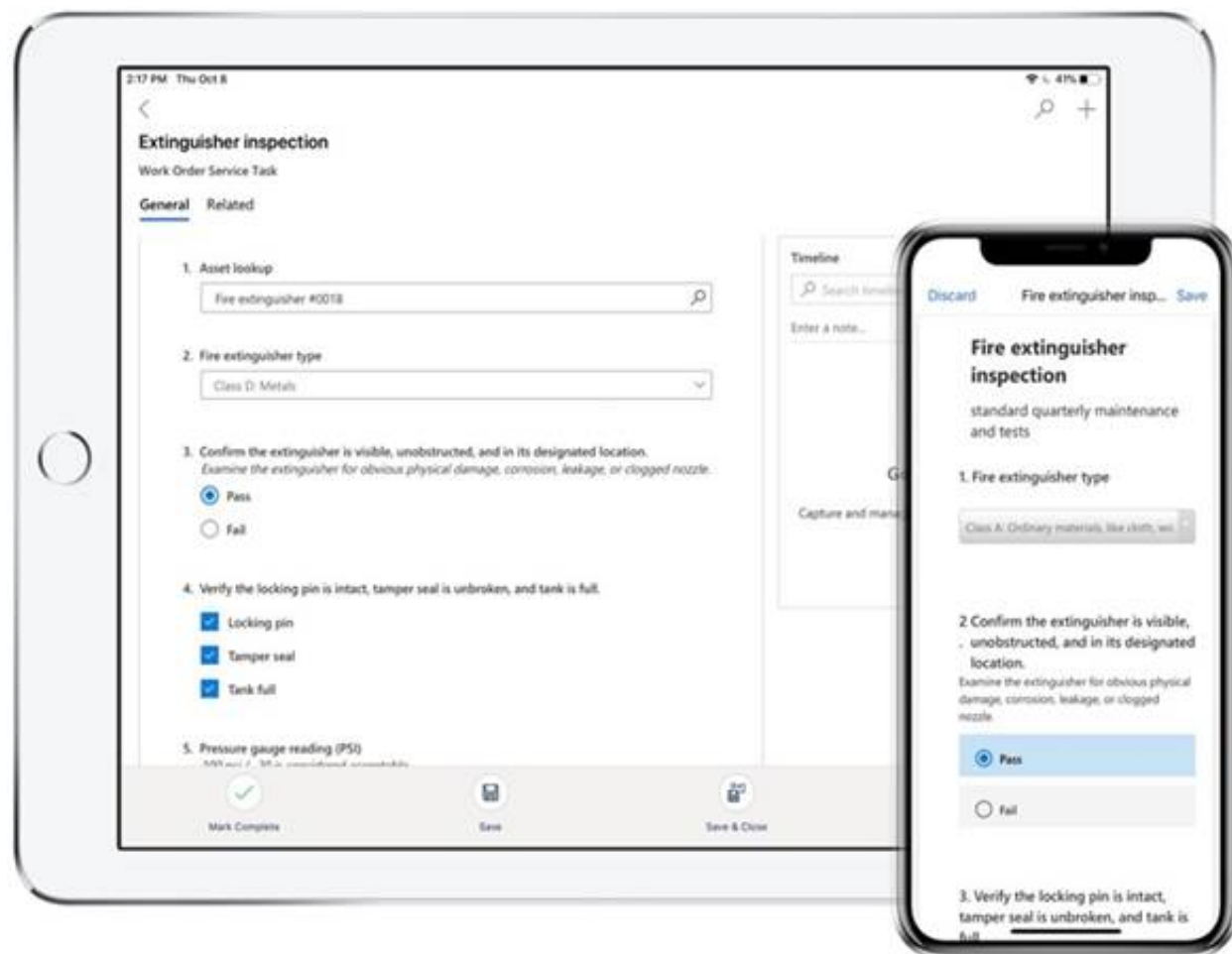
In this example, you're a car retailer tracking the sales team's average sales per month. The needle represents a 140 cars sales goal. The minimum possible average sales is 0 and the maximum is 200. The blue shading shows that the team is averaging approximately 120 sales this month.

Box 2: Add an inspection order to the work order form

You can add inspections to work orders in Dynamics 365 Field Service.

Field Service inspections are digital forms that technicians use to quickly and easily answer a list of questions as part of a work order. The list of questions can include safety protocols, pass-and-fail tests for a customer asset, an interview with a customer, or other audits and assessments performed before, during, or after a work order.

Example:



NEW QUESTION 10

- (Topic 3)

You need to recommend an environment for the inspection solution. Where should you recommend installing the solution?

- A. within the Dynamics 365 Field Service environment
- B. in a separate Microsoft Dataverse environment in the same instance as the Dynamics 365 Field Service environment
- C. in a separate Dataverse environment with Dynamics 365 apps enabled
- D. within the default Dynamics 365 Field Service environment

Answer: A

NEW QUESTION 13

- (Topic 4)

A large company experiences high staff turnover rates. As a result, the company must add or remove multiple system user accounts daily.

You need to recommend a security concept which will facilitate complex security profiles to entities for large groups of users across the Power Apps and Dynamics 365 applications.
What should you recommend?

- A. Hierarchy security
- B. Field-level security
- C. User access management
- D. Team privileges

Answer: D

Explanation:

User and team management is the area of Microsoft Dataverse where you can create and maintain user accounts and profiles.

A user is any person who works for a business unit who uses Dataverse. Each user has a user account.

A team is a group of users. Teams let users across an organization collaborate and share information.

Note: Why use Dataverse?

Easy to secure – Data is securely stored so that users can see it only if you grant them access. Role-based security allows you to control access to tables for different users within your organization.
Data from your Dynamics 365 applications is also stored within Dataverse, allowing you to quickly build apps that use your Dynamics 365 data and extend your apps with Power Apps. Reference:
https://docs.microsoft.com/en-us/powerapps/developer/data-platform/user-team-entities https://docs.microsoft.com/en-us/powerapps/maker/data-platform/data-platform-intro

NEW QUESTION 16

DRAG DROP - (Topic 4)

You are designing a solution to automate the following processes:

- Import data into Microsoft Dataverse from systems that have an API available.
- Import data into Microsoft Dataverse from systems that do not have an API available.
- Validate that contacts in a Microsoft Excel file Dataverse forms in a specified order. You need to implement automation methods.

Which components should you use' To answer, drag the appropriate components to the correct requirements. Each component may be used once, more than once, or not at all. You may need to drag the split bar between panes or scroll to view content.

NOTE: Each correct selection is worth one point

Components

Cloud flow

Business process flow

Robotic process automation

Answer Area

Requirement

Interact with applications that do not have an API.

Guide users through business steps in a specific order.

Interact with applications that have an API.

Component

- A. Mastered
B. Not Mastered

Answer: A

Explanation:

Components

Cloud flow

Business process flow

Robotic process automation

Answer Area

Requirement

Interact with applications that do not have an API.

Guide users through business steps in a specific order.

Interact with applications that have an API.

Component

Robotic process automation

Business process flow

Cloud flow

NEW QUESTION 18

HOTSPOT - (Topic 4)

A company uses Dynamics 365 Sales and Power BI.

Sales managers must be able to keep track of changes to their pipeline in the following ways:

- ? Notify the sales managers when an Opportunity changes sales stage.
- ? Notify the sales managers when the pipeline drops below 2.5M USD.
- ? When reviewing the pipeline in Power BI, a sales executive must be able to add a Playbook to an Opportunity.

You need to recommend a solution that meets the company requirements.

Which combination of solutions should you recommend? To answer, select the appropriate option in the answer area.

NOTE: Each correct selection is worth one point.

Notify the sales manager when an Opportunity changes sales stage.

Microsoft Power Automate, Microsoft Dataverse connector, and Microsoft Office 365 Outlook connector

Microsoft Power Automate, Microsoft Dataverse connector, and Microsoft Office 365 users

Microsoft Power Automate, data alerts, and Microsoft Office 365 connector

Notify the sales managers when the pipeline drops below 2.5 USD.

Microsoft Power Automate, Microsoft Dataverse connector, and Microsoft Office 365 Outlook connector

Microsoft Power Automate, Power BI data alerts, and Microsoft Office 365 connector

Microsoft Power Automate, Power BI, Power Apps, and Microsoft Dataverse connector

When reviewing the pipeline in Power BI, a sales executive must be able to add a Playbook to an Opportunity.

Power BI, Power Apps, Microsoft Dataverse connector, and Microsoft Office 365 Outlook connector

Microsoft Power Automate, Data alerts, Microsoft Dataverse connector, and Microsoft Office 365 users

Microsoft Power Automate, Data alerts, and Microsoft Office 365 connector

Microsoft Power Automate, Power BI, Power Apps, and Microsoft Dataverse connector

- A. Mastered
B. Not Mastered

Answer: A

Explanation:

Box 1: Microsoft Power Automate, Microsoft Dataverse connector, and Microsoft 365 Outlook connector

Use Microsoft Dataverse as the data source.

While Power Automate is a robust tool with ever-expanding capabilities, it also handles simple tasks with grace. A universal business need for many organizations is the ability to automate email notifications based on certain criteria: an opportunity is won, send an email to the sales manager; a case is closed, send an email to the customer; a work order is completed, send an email to the customer.

Power Automate can easily accommodate this using the Microsoft 365 Outlook connector.

Box 2: Microsoft Power Automate, Power Bi data alerts, and Microsoft 365 connector Data alerts in the Power BI service: Set alerts to notify you when data in your dashboards changes beyond limits you set.

Box 3: Microsoft Power Automate, Power BI, Power Apps, and Microsoft Dataverse connector

NEW QUESTION 22

- (Topic 4)

You are a Power Apps architect for a company. The IT administrator designs a Power Apps app that is ready to be tested. The company uses application lifecycle management (ALM).

Each version and solution component must be tracked as it is tested.

You need to recommend a strategy to deploy solutions for the user acceptance testing environment.

What should you recommend?

- A. Use Package Deployer and deploy a managed solution.
- B. Use Package Deployer and deploy an unmanaged solution.
- C. Use Solution Packager and deploy a managed solution.
- D. Use Solution Packager and deploy an unmanaged solution.

Answer: D

Explanation:

Solution Packager is a tool that can unpack a compressed solution file into multiple XML files and other files, so they can be easily managed by a source control system.

Unmanaged solution: An open solution with no restrictions on what can be added, removed, or modified. This is recommended during development of a solution.

C: Managed solution

A completed solution ready to be imported into an organization. Once imported, components can't be added or removed, although they can optionally allow further customization. This is recommended when development of the solution is complete.

Reference:

<https://docs.microsoft.com/en-us/power-platform/alm/solution-packager-tool>

NEW QUESTION 26

- (Topic 4)

A company wants to create a Power Automate flow that posts marketing events to social media.

The company must ensure that the postings adhere to regulatory requirements for handling of personally identifiable information (PII) data. The company will not post events to unauthorized social media platforms.

You need to ensure that the requirement is met.

Which two actions should you perform? Each correct answer presents part of the solution.

NOTE: Each correct selection is worth one point.

- A. Configure the relevant connector so that is part of the Non-Business data group category.
- B. Create a security role to prevent data export.
- C. Configure an Azure Active Directory (AAD) security role for the maker to the environment.
- D. Create a Data Loss Protection (DLP) policy.
- E. Configure the relevant connector so that it is part of the Blocked data group category.

Answer: DE

Explanation:

DLP policies enforce rules for which connectors can be used together by classifying connectors as either Business or Non-Business. If you put a connector in the Business group, it can only be used with other connectors from that group in any given app or flow. Sometimes you might want to block the usage of certain connectors altogether by classifying them as Blocked.

Reference:

<https://docs.microsoft.com/en-us/power-platform/admin/wp-data-loss-prevention>

NEW QUESTION 27

- (Topic 4)

A car dealership has a custom financing table.

You are working with a developer to add a button to a ribbon that displays a hidden section of a form when specific criteria are met.

You need to recommend tools and technologies for the developer

Which two tools or technologies should you recommend? Each correct answer presents part of the solution.

NOTE: Each correct selection is worth one point

- A. Write a business rule.
- B. Write JavaScript code.
- C. Use the Ribbon Workbench.
- D. Use the form editor.

Answer: BC

Explanation:

Client-side scripting using JavaScript is one of the ways to apply custom business process logic for displaying data on a form in a model-driven app.

You can use a community tool, Ribbon Workbench, to visually edit ribbons using the UI. Reference:

<https://docs.microsoft.com/en-us/powerapps/developer/model-driven-apps/client-scripting>

[https://docs.microsoft.com/en-us/powerapps/developer/model-driven-apps/customize- commands-ribbon](https://docs.microsoft.com/en-us/powerapps/developer/model-driven-apps/customize-commands-ribbon)

NEW QUESTION 29

- (Topic 4)

You are designing a Power Platform solution for a company. The company issues each employee a tablet device.

The company wants to simplify the opportunity management processes and automate when possible. The company identifies the following requirements:

? Users must have a visual guide to know which data to enter in each step of the opportunity management process.

? The system must automatically assign the opportunity to a manager for approval

once all data is entered.

? The system must notify an assignee each time an opportunity is assigned to them by using push notifications.

? When a user selects a push notification, the associated opportunity must display.

You need to recommend the Power Platform components that will meet their requirements.

Which three Power Platform components should you recommend? Each correct answer presents part of the solution.
NOTE: Each correct selection is worth one point.

- A. Business process flows
- B. Power Apps mobile apps
- C. Power Virtual Agents chatbots
- D. Power Automate desktop flows
- E. Power Automate cloud flows

Answer: ABE

Explanation:

A: Use business process flows to define a set of steps for people to follow to take them to a desired outcome. These steps provide a visual indicator that tells people where they are in the business process.

B: Push notifications are used in Power Apps mobile to engage app users and help them prioritize key tasks. In Power Apps, you can create notifications for Power Apps mobile by using the Power Apps Notification connector. You can send notifications to any app that you create in Power Apps.

E: Create a cloud flow when you want your automation to be triggered either automatically, instantly, or via a schedule.

_ Automated flows: Create an automation that is triggered by an event such as arrival of an email from a specific person, or a mention of your company in social media.

Reference:

<https://docs.microsoft.com/en-us/power-automate/business-process-flows-overview> <https://docs.microsoft.com/en-us/powerapps/mobile/power-apps-mobile-notification>

NEW QUESTION 30

- (Topic 4)

You are designing a self-service portal for a company. The portal must meet the following requirements:

? Customers must be able to submit and review cases.

? Customers must be able to chat with service representatives in near real time.

? Allow service representatives to select cases from queues and use knowledge articles to resolve customer concerns.

You need to recommend solutions for the company that do not require custom development.

Which three apps or services should you recommend? Each correct answer presents part of the solution.

NOTE: Each correct selection is worth one point.

- A. Dynamics 365 Field Service
- B. Dynamics 365 Customer Service
- C. Omnichannel for Customer Service
- D. Customer Insights
- E. Customer self-service portal

Answer: BCE

Explanation:

Reference:

<https://docs.microsoft.com/en-us/powerapps/maker/portals/portal-templates>

<https://docs.microsoft.com/en-us/dynamics365/customer-service/embed-chat-widget-portal>

NEW QUESTION 32

- (Topic 4)

You are designing a new Microsoft Power Platform solution for a wedding organizer company.

The company uses a third-party application and plans to migrate the data into Microsoft Dataverse for the new solution. The third-party application has an API that can be connected to programmatically for data migration purposes.

You need to migrate the unique IDs belonging to the records from the third-party application.

Which two Microsoft Dataverse column types should you use to store this information? Each correct answer presents a complete solution.

- A. Text Area
- B. Unique Identifier
- C. Plain Text
- D. Rich Text
- E. Float

Answer: B

NEW QUESTION 36

HOTSPOT - (Topic 4)

You design a Power Platform solution for a customer. The solution uses Microsoft Dataverse as the data store. You are managing the go-live process for the solution.

The customer reports the following performance issues:

? Form load time is much slower than it was during testing.

? Overall system performance has been significantly slower that it was during testing.

You need to recommend how to troubleshoot system performance.

Which actions should you recommend? To answer, select the appropriate options in the answer area.

NOTE: Each correct selection is worth one point.

Performance issue	Action
Slow form load times	<div>▼</div> <div>Review workflows associated with the form events.</div> <div>Review QuickFind properties for the fields on the form.</div> <div>Review the fields that are on the form.</div>
Overall slow system performance	<div>▼</div> <div>Change all security roles from global read permissions to business unit permissions.</div> <div>Review one to many relationships to verify whether cascade settings are necessary.</div> <div>Change security roles from global read access to business unit to provide better performance.</div>

- A. Mastered
- B. Not Mastered

Answer: A

Explanation:

Box 1: Review the fields that are on the form
Keep the number of table columns (fields) to a minimum.
The more table columns (formerly referred to as fields) you have in a form, the more data that needs to be downloaded to view each record.
Box 2: Review one to many relationships to verify whether cascade settings are necessary.

NEW QUESTION 41

HOTSPOT - (Topic 4)
You are designing a Power Platform solution for a company. You have the following requirements:
? Users in the human resources department must be able to create tasks.
? Users in the human resources department must be able to assign cases to other users.
You need to recommend security settings to the company.
What should you recommend? To answer, select the appropriate options in the answer area.
NOTE: Each correct selection is worth one point.

Business requirement	Solution
Users in the human resources department must be able to create tasks.	<div>▼</div> <div>Assign only Create rights to activities.</div> <div>Assign Create and Read rights to activities.</div> <div>Assign user-level assign rights to the human resources case table.</div> <div>Assign organization-level rights to the human resources case table.</div>
Users in the human resources department must be able to assign cases to other users.	<div>▼</div> <div>Assign only Create rights to activities.</div> <div>Assign Create and Read rights to activities.</div> <div>Assign user-level assign rights to the human resources case table.</div> <div>Assign organization-level assign rights to the human resources case table.</div>

Answer:

Business requirement	Solution
Users in the human resources department must be able to create tasks.	<div>▼</div> <div>Assign only Create rights to activities.</div> <div>Assign Create and Read rights to activities.</div> <div>Assign user-level assign rights to the human resources case table.</div> <div>Assign organization-level rights to the human resources case table.</div>
Users in the human resources department must be able to assign cases to other users.	<div>▼</div> <div>Assign only Create rights to activities.</div> <div>Assign Create and Read rights to activities.</div> <div>Assign user-level assign rights to the human resources case table.</div> <div>Assign organization-level assign rights to the human resources case table.</div>

- A. Mastered
- B. Not Mastered

Answer: A

Explanation:

Box 1: Assign only Create rights to activities
You require the same set of Dataverse privileges and access rights to work with custom activities as those required to work with custom entities.
Task-based privileges, at the bottom of the form, give a user privileges to perform specific tasks, such as publish articles.
Box 2: Assign User-level assign rights to human resources case table.
Record-level privileges define which tasks a user with access to the record can do, such as Read, Create, Delete, Write, Assign, Share, Append, and Append To.
For user and team owned records, the access level choices for most privileges are tiered Organization, Business Unit, Business Unit and Child Business Unit or only the user's own records. That means for read privilege on contact, I could set user owned, and the user would only see their own records.

NEW QUESTION 44

- (Topic 4)

You are designing a database table for a client. You have the following requirements:

? Maintain a comprehensive list of colors and their corresponding RGB values and hexadecimal values.

? Prevent the addition of duplicate colors based on the hexadecimal value for the color.

You need to recommend a design for the table.

Which two actions should the client perform after the table is created? Each correct answer presents part of the solution.

NOTE: Each correct selection is worth one point.

A. Mark the hex value column as business required.

B. Configure and schedule a recurring bulk record deletion job.

C. Create alternate keys for the table.

D. Mark the RGB value column as business required.

Answer: CD

Explanation:

B: Setting a column to Business Required means that the default behavior of a model- driven or canvas app will enforce this requirement in the app.

C: With alternate keys you can now define a column in a Dataverse table to correspond to a unique identifier (or unique combination of columns) used by the external data store. This alternate key can be used to uniquely identify a record in Dataverse in place of the primary

key. You must be able to define which columns represent a unique identity for your records. Once you identify the columns that are unique to the table, you can declare them as alternate keys through the customization user interface (UI) or in the code.

Reference:

<https://docs.microsoft.com/en-us/powerapps/maker/data-platform/create-edit-field-portal>

<https://docs.microsoft.com/en-us/powerapps/developer/data-platform/define-alternate-keys- entity>

NEW QUESTION 46

HOTSPOT - (Topic 4)

A food distribution terminal uses Microsoft Dynamics 365 Field Service and Microsoft Dynamics 365 Supply Chain Management to manage inventory and fulfill customer orders. Customers place custom orders through a Power Pages customer portal. Customers can enter different receiving times and dates on fresh produce order lines.

The terminal needs to expose fresh produce order details from Dynamics 365 to its customers in the portal. Customers can control how much detail they see in the portal.

You need to design a solution that meets the requirements. Which mechanism should you use for each requirement?

To answer, select the appropriate options in the answer area. NOTE: Each correct selection is worth one point.

Answer Area

Requirement	Mechanism
Retrieve data representing fresh produce details.	<div>Custom connector</div> <div>Basic form</div> <div>Data gateway</div> <div>Advanced form</div> <div>Custom connector</div>
Expose the fresh produce details.	<div>Portal Management app</div> <div>Portal Management app</div> <div>Customer Service Insights</div> <div>Microsoft Power Platform admin center</div> <div>Microsoft 365 Apps admin center</div>

Answer Area

Answer:

Requirement	Mechanism
Retrieve data representing fresh produce details.	<div>Custom connector</div> <div>Basic form</div> <div>Data gateway</div> <div>Advanced form</div> <div>Custom connector</div>
Expose the fresh produce details.	<div>Portal Management app</div> <div>Portal Management app</div> <div>Customer Service Insights</div> <div>Microsoft Power Platform admin center</div> <div>Microsoft 365 Apps admin center</div>

A. Mastered

B. Not Mastered

Answer: A

NEW QUESTION 50

- (Topic 4)

Note: This question is part of a series of questions that present the same scenario. Each question in the series contains a unique solution that might meet the stated goals. Some question sets might have more than one correct solution, while others might not have a correct solution.

After you answer a question in this section, you will NOT be able to return to it. As a result, these questions will not appear in the review screen.

A company plans to automate the expense approval process.

Users currently enter data into an on-premises SQL Server database. You need to allow users to submit expenses from mobile devices.

Solution: Create a canvas app for expense data entry. Create a custom connector. Create a cloud flow for approval and use the custom connector to add data to the SQL Server database.

Does the solution meet the goal?

A. Yes

B. No

Answer: B

Explanation:

NEW QUESTION 55

- (Topic 4)

You are a Microsoft Power Platform solution architect working on a project. API calls are being sent between external applications and a Microsoft Power Platform solution.

The number of requests per user within a given time frame varies. Some users may be exceeding the service protection API limits.

You need to ensure that the API conforms to service protection limits.

Which three metrics should you review? Each correct answer presents part of the solution.

NOTE: Each correct selection is worth one point.

- A. The number of requests that a user can make each day.
- B. The total number of requests that can be processed each day.
- C. The number of concurrent requests that a user can make.
- D. The total execution time for requests by all users.
- E. The combined execution time required to process requests from a user.

Answer: ACE

Explanation:

Three types of service protection API limit errors that can be returned:

? Number of requests This limit counts the total number of requests during the preceding 300 second period.

? Execution time This limit tracks the combined execution time of incoming requests during the preceding 300 second period.

? Concurrent requests This limit tracks the number of concurrent requests. Reference:

<https://docs.microsoft.com/en-us/powerapps/developer/data-platform/api-limits>

NEW QUESTION 56

HOTSPOT - (Topic 4)

You are a Microsoft Power Platform architect designing integrations for a project. You have the following integration requirements:

- Post requests to a system that is not always available and limited in its ability to process high volumes of messages.
- Allow peer-to-peer communication between on-premises services and cloud-based model-driven Microsoft Power Platform apps.
- Stream large volumes of data from the company's website to a live Power BI dashboard.
- Support enterprise-level integrations with Dynamics 365 that can be billed on a consumption basis.

You need to use an Azure service for the integration requirements.

Which Azure services should you use? To answer, select the appropriate options in the answer area.

NOTE: Each correct selection is worth one point.

Answer Area

Requirement	Service
Post requests to a system that is not always available and limited in its ability to process high volumes of messages.	<div><div>Azure Service Bus</div><div>Azure Service Bus</div><div>Azure Notification Hub</div><div>Azure Active Directory</div><div>Azure ExpressRoute</div></div>
Allow peer-to-peer communication between on-premises services and cloud-based model-driven Microsoft Power Platform apps.	<div><div>Azure Relay</div><div>Azure Relay</div><div>Azure SQL</div><div>Azure Cognitive Services</div><div>Azure API Management</div></div>
Stream large volumes of data from the company's website to a live Power BI dashboard.	<div><div>Azure Event Hubs</div><div>Azure Event Hubs</div><div>Azure Service Bus</div><div>Azure SQL</div></div>
Support enterprise-level integrations with Dynamics 365 that can be billed on a consumption basis.	<div><div>Azure Functions</div><div>Azure Logic Apps</div><div>Azure Functions</div><div>Azure Service Bus</div></div>

Answer:

Answer Area

Requirement	Service
Post requests to a system that is not always available and limited in its ability to process high volumes of messages.	<div><div>Azure Service Bus</div><div>Azure Service Bus</div><div>Azure Notification Hub</div><div>Azure Active Directory</div><div>Azure ExpressRoute</div></div>
Allow peer-to-peer communication between on-premises services and cloud-based model-driven Microsoft Power Platform apps.	<div><div>Azure Relay</div><div>Azure Relay</div><div>Azure SQL</div><div>Azure Cognitive Services</div><div>Azure API Management</div></div>
Stream large volumes of data from the company's website to a live Power BI dashboard.	<div><div>Azure Event Hubs</div><div>Azure Event Hubs</div><div>Azure Service Bus</div><div>Azure SQL</div></div>
Support enterprise-level integrations with Dynamics 365 that can be billed on a consumption basis.	<div><div>Azure Functions</div><div>Azure Logic Apps</div><div>Azure Functions</div><div>Azure Service Bus</div></div>

- A. Mastered
- B. Not Mastered

Answer: A

NEW QUESTION 58

DRAG DROP - (Topic 4)

A company has a call center that manages customer-related issues.

The company has the following customer experience improvement requirements:

- Simulate a human conversation with a customer by providing a chat interface.
- Ensure the initial conversation is passed to a live agent upon escalation. You need to recommend a solution for each requirement.

Which solutions should you recommend? To answer, drag the appropriate solutions to the correct requirements. Each solution may be used once, more than once, or not at all. You may need to drag the split bar between panes or scroll to view content.

NOTE: Each correct selection is worth one point.

Solutions		Requirement	Solution
Power Virtual Agents		Provide an automated chat interface.	
Dynamics 365 Remote Assist		Pass conversation to a live agent upon escalation.	
Dynamics 365 Customer Service			
Omnichannel for Customer Service			

Answer:

Solutions		Requirement	Solution
Power Virtual Agents		Provide an automated chat interface.	Power Virtual Agents
Dynamics 365 Remote Assist		Pass conversation to a live agent upon escalation.	Omnichannel for Customer Service
Dynamics 365 Customer Service			
Omnichannel for Customer Service			

- A. Mastered
- B. Not Mastered

Answer: A

NEW QUESTION 60

DRAG DROP - (Topic 4)

You need to recommend methods for assigning security to each group of users. The customer provides the following requirements:

? Customers need the ability to submit a case through an online portal.

? Portal must handle 75 concurrent users submitting cases.

? Service data must be retained for at least six years.

You need to determine which requirements are functional or non-functional.

Which requirements are functional or non-functional? To answer, drag the appropriate types to the correct requirements. Each type may be used once, more than once, or not at all. You may need to drag the split bar between panes or scroll to view content.

NOTE: Each correct selection is worth one point.

Types	Requirement	Type
Functional	Customers need the ability to submit a case through an online portal.	
Non-functional	Portal must handle 75 current users submitting cases.	
	Service data must be retained for at least six years.	

Answer:

Types	Requirement	Type
Functional	Customers need the ability to submit a case through an online portal.	Functional
Non-functional	Portal must handle 75 current users submitting cases.	Non-functional
	Service data must be retained for at least six years.	Non-functional

- A. Mastered
- B. Not Mastered

Answer: A

Explanation:

Box 1: Functional

Functional requirements describe what the solution needs to do or its behaviors.

Box 2: Non-functional

Non-functional requirements commonly describe non-behavior aspects of the solution such as performance requirements.

Box 3: Non-functional

Examples of common non-functional requirement types include:

- ? Availability
- ? Compliance/regulatory
- ? Data retention/residency
- ? Performance (response time, and so on)
- ? Privacy
- ? Recovery time
- ? Security
- ? Scalability

NEW QUESTION 64

- (Topic 4)

You are designing a Microsoft Power Platform solution for a company that has multiple Microsoft Dataverse environments. You need to prevent specific users from accessing specific environments. What should you do?

- A. Remove all security roles from the users of the specific environments.
- B. Remove the user from the business unit.
- C. Remove the user from all security groups.
- D. Remove the user from all teams.

Answer: A

Explanation:

Microsoft Dataverse uses a role-based security model to help secure access to the database. Security roles can be used to configure environment-wide access to all resources in the environment.

Reference:

<https://docs.microsoft.com/en-us/power-platform/admin/database-security>

NEW QUESTION 68

HOTSPOT - (Topic 4)

You are supporting a recent go-live for a model-driven app that includes mobile offline functionality.

Users report the following issues:

- ? The process of downloading initial metadata for the app takes hours to complete.
- ? Some account views are unavailable when the app is offline.
- ? Changes to users' security privileges are not reflected in the mobile app.
- ? Contact data is not available when the app is offline.

You need to resolve the mobile app performance issues.

What should you review? To answer, select the appropriate options in the answer area.

NOTE: Each correct selection is worth one point.

Issue	Resolution
The process of downloading initial metadata for the app takes hours to complete.	<div><div></div><div>Synchronize the mobile app.</div><div>Remove organization data filters.</div><div>Reduce records included in the profile filter.</div></div>
Changes to users' security privileges are not reflected in the mobile app.	<div><div></div><div>Synchronize the mobile app.</div><div>Reduce records included in the profile filter.</div><div>Remove reference to tables not included in mobile profile.</div></div>
Some account views are unavailable when the app is offline.	<div><div></div><div>Synchronize the mobile app.</div><div>Reduce records included in the profile filter.</div><div>Remove reference to tables not included in mobile profile.</div></div>
Contact data is not available when the app is offline.	<div><div></div><div>Reduce records included in the profile filter.</div><div>Update mobile profile to include contact information.</div><div>Remove reference to tables not included in mobile profile.</div></div>

Answer:

Issue	Resolution
The process of downloading initial metadata for the app takes hours to complete.	<div><div></div><div>Synchronize the mobile app.</div><div>Remove organization data filters.</div><div>Reduce records included in the profile filter.</div></div>
Changes to users' security privileges are not reflected in the mobile app.	<div><div></div><div>Synchronize the mobile app.</div><div>Reduce records included in the profile filter.</div><div>Remove reference to tables not included in mobile profile.</div></div>
Some account views are unavailable when the app is offline.	<div><div></div><div>Synchronize the mobile app.</div><div>Reduce records included in the profile filter.</div><div>Remove reference to tables not included in mobile profile.</div></div>
Contact data is not available when the app is offline.	<div><div></div><div>Reduce records included in the profile filter.</div><div>Update mobile profile to include contact information.</div><div>Remove reference to tables not included in mobile profile.</div></div>

- A. Mastered
- B. Not Mastered

Answer: A

NEW QUESTION 71

- (Topic 4)
A pharma company uses a proprietary system to manage its chemical experiments. The company uses Microsoft Dynamics 365 Project Operations to manage lab staff and resources.
Employees manually update Project Operations data with data from their proprietary system as needed. Employees are not able to provide a definite schema for their data.
You need to provide a solution that will allow employees to configure their own automatic updates.
Which component should you use?

- A. Dataflows
- B. Custom connectors
- C. Data gateways
- D. Microsoft Power Automate flows

Answer: D

NEW QUESTION 76

HOTSPOT - (Topic 4)
You are performing a fit gap requirements analysis.
You need to select Microsoft Power Platform components to satisfy the requirements. Which components should you use? To answer, select the appropriate options in the answer area.
NOTE: Each correct selection is worth one point.

Requirement	Component
Coordinate long-term end-to-end delivery of financial counseling services to farmers.	<div><div></div><div>Model-driven app</div><div>Model-driven app</div><div>Power Virtual Agents</div><div>Dynamics 365 Customer Voice</div></div>
Manage project accounting and recognize revenue compliant with international financial reporting standards.	<div><div></div><div>Dynamics 365 Finance</div><div>Dynamics 365 Project Operations</div><div>Dynamics 365 Field Service</div><div>Dynamics 365 Finance</div></div>
Notify users of their overdue tasks on a daily basis.	<div><div></div><div>Power Automate</div><div>Power Automate</div><div>Power Virtual Agents</div><div>AppSource</div></div>
Notify users of their overdue tasks on a daily basis.	<div><div></div><div>Power Automate</div><div>Power Automate</div><div>Power Virtual Agents</div><div>AppSource</div></div>

- A. Mastered
- B. Not Mastered

Answer: A

Explanation:

Answer Area

Requirement

Coordinate long-term end-to-end delivery of financial counseling services to farmers.

Manage project accounting and recognize revenue compliant with international financial reporting standards.

Notify users of their overdue tasks on a daily basis.

Notify users of their overdue tasks on a daily basis.

Component

Model-driven app
Model-driven app
Power Virtual Agents
Dynamics 365 Customer Voice
Dynamics 365 Finance
Dynamics 365 Project Operations
Dynamics 365 Field Service
Dynamics 365 Finance
Power Automate
Power Automate
Power Virtual Agents
AppSource

NEW QUESTION 77

- (Topic 4)

A company plans to automate business processes by using Power Automate. You identify a subprocess that must be implemented across multiple flows. You need to implement the subprocess so that it is maintainable and easy to navigate. What should you do?

- A. Save a copy of the subprocess and then add any additional actions into the flow.
- B. Initiate the subprocess with an automated trigger.
- C. Copy the actions of the subprocess into the flow by using the clipboard.
- D. Initiate the subprocess with an instant trigger.

Answer: B

NEW QUESTION 81

HOTSPOT - (Topic 4)

An automobile parts manufacturer wants to replace an existing system with a Microsoft Power Platform solution. The company has been experiencing undesired data changes in their current system. The cause of the changes is due to the relationships that are set up between tables in the database that the system uses. The new solution must meet the following requirements:

- Track vehicle manufacturers and models.
- Display a list of all models that a manufacturer produces.

Ensure that each vehicle model can be associated to only one manufacturer.

- Delete all associated models when a user deletes a manufacturer.
- Automatically populate information from the manufacturer when creating a new model from the model list on the manufacturer page.

You need to recommend table relationships to meet the business requirements. Which relationship settings should you recommend? To answer, select the appropriate options in the answer area.

NOTE: Each correct selection is worth one point.

Answer Area

Business requirement	Relationship
The system must delete all associated models when a user deletes a manufacturer.	<div>Use a parental 1:N relationship between manufacturer and model.</div> <div>Use a parental 1:N relationship between manufacturer and model.</div> <div>Use a referential 1:N relationship between manufacturer and model.</div> <div>Use field mappings in 1:N relationship between manufacturer and model.</div> <div>Use an N:N relationship between manufacturer and model.</div>
The system must auto-populate information from the manufacturer when creating a new model from the model list on the manufacturer page.	<div>Use field mappings in 1:N relationship between manufacturer and model.</div> <div>Use a parental 1:N relationship between manufacturer and model.</div> <div>Use a referential 1:N relationship between manufacturer and model.</div> <div>Use field mappings in 1:N relationship between manufacturer and model.</div> <div>Use an N:N relationship between manufacturer and model.</div>

- A. Mastered
- B. Not Mastered

Answer: A

Explanation:

Answer Area

Business requirement	Relationship
The system must delete all associated models when a user deletes a manufacturer.	<div>Use a parental 1:N relationship between manufacturer and model.</div> <div>Use a parental 1:N relationship between manufacturer and model.</div> <div>Use a referential 1:N relationship between manufacturer and model.</div> <div>Use field mappings in 1:N relationship between manufacturer and model.</div> <div>Use an N:N relationship between manufacturer and model.</div>
The system must auto-populate information from the manufacturer when creating a new model from the model list on the manufacturer page.	<div>Use field mappings in 1:N relationship between manufacturer and model.</div> <div>Use a parental 1:N relationship between manufacturer and model.</div> <div>Use a referential 1:N relationship between manufacturer and model.</div> <div>Use field mappings in 1:N relationship between manufacturer and model.</div> <div>Use an N:N relationship between manufacturer and model.</div>

NEW QUESTION 84

- (Topic 4)

A company has a list of contacts in a Microsoft Excel file. The company wants to load the contact information into a Microsoft Power Platform solution. You need to

recommend a data-loading solution. What should you recommend?

- A. Add the contacts to a static worksheet
- B. Use the Excel Template feature
- C. Use the import from Excel feature.

Answer: B

NEW QUESTION 89

HOTSPOT - (Topic 4)

A company plans to create a Microsoft Power Platform solution that integrates with Dynamics 365 Sates. The solution must meet the following requirements:

- Connect directly with a Microsoft Azure SQL database as an external data source at run time where specific data is available in the Dynamics 365 Sales solution without the need for data replication.
- An external system needs to send data to the company's Dynamics 365 Sales solution. You need to recommend the most suitable solution to integrate Dynamics 365 Sales with both systems.

What should you recommend? To answer, select the appropriate option in the answer area.

Answer Area

Integration requirement	Solutions
Have read-only visibility of data from an external Azure SQL database.	<div>Use virtual tables. Use a custom plug-in. Use Dynamics 365 Web API. Use a web resource to display data.</div>
External system sends data to Dynamics 365 Sales.	<div>Use a custom plug-in. Use Dynamics 365 Web API. Use a web resource to display data.</div>

- A. Mastered
- B. Not Mastered

Answer: A

Explanation:

Answer Area

Integration requirement	Solutions
Have read-only visibility of data from an external Azure SQL database.	<div>Use virtual tables. Use a custom plug-in. Use Dynamics 365 Web API. Use a web resource to display data.</div>
External system sends data to Dynamics 365 Sales.	<div>Use a custom plug-in. Use Dynamics 365 Web API. Use a web resource to display data.</div>

NEW QUESTION 92

DRAG DROP - (Topic 4)

You are a Microsoft Power Platform architect.

You need to design a process to transport configuration and test data from one environment to a separate environment

Which four actions should you recommend be performed in sequence? To answer, move the appropriate actions from the list of actions to the answer area and arrange them in the correct order.

Actions		Answer area	
Import the ZIP file data.		1	
Import the CSV file data.		2	
Define the schema of the source data to be exported.	➡	3	⬅
Use the schema to export data.	⬅	4	⬇
Download the Configuration Migration tool from NuGet.			
Create personal views to define the source data to be exported.			
Download the schema of the source data to be exported.			
Download the Configuration Migration tool from AppSource.			

- A. Mastered
- B. Not Mastered

Answer: A

Explanation:

<https://learn.microsoft.com/en-us/power-platform/admin/manage-configuration-data>

NEW QUESTION 96

- (Topic 4)

A company is struggling to gather insights from won and lost opportunities. Users must be able to access the company's solution from mobile and desktop devices. The solution must meet the following requirements:

- ? context of other related data.
- ? Display data to users as charts and tables and provide drill-through capabilities.

You need to recommend a Power Platform tool to help the client visualize the data. Which two technologies should you recommend? Each correct answer presents a complete solution.

NOTE: Each correct selection is worth one point.

- A. Power BI
- B. Power Automate
- C. Power Virtual Agents
- D. Power Apps

Answer: AD

Explanation:

A: Power BI is a business analytics service by Microsoft. It aims to provide interactive visualizations and business intelligence capabilities with an interface simple enough for end users to create their own reports and dashboards. It is part of the Microsoft Power Platform.

D: Power BI Apps are an easy way for designers to share different types of content at one time. App designers create the dashboards and reports and bundle them together into an app. The designers then share or publish the app to a location where you, the business user, can access it. Because related dashboards and reports are bundled together, it's easier for you to find and install in both the Power BI service (<https://powerbi.com>) and on your mobile device. After you install an app, you don't have to remember the names of a lot of different dashboards or reports because they're all together in one app, in your browser or on your mobile device.

Reference:
<https://docs.microsoft.com/en-us/power-bi/consumer/end-user-apps>

NEW QUESTION 97

HOTSPOT - (Topic 4)

You are designing a model-driven app that provides marketing, sales, and service operations to a company. The app must integrate with the following systems and data sources:

- A third-party marketing system for lead generation and website submissions.
- A Microsoft Excel Online file that contains manufacturing data on relevant products.
- A separate Microsoft Dataverse environment.

You need to recommend Power Automate connectors for the app. Which connections should you recommend? To answer, select the appropriate options in the answer area.

NOTE: Each correct selection is worth one point.

Answer Area

Data source	Connector type
Third-party marketing system	<div>Power BI connector</div> <div>SharePoint connector</div> <div>Custom connector</div> <div>Microsoft Forms connector</div>
Microsoft Dataverse environment	<div>SharePoint</div> <div>Azure Data Factory</div> <div>Microsoft Dataverse</div>

- A. Mastered
- B. Not Mastered

Answer: A

Explanation:

Box 1: Custom connector

While Azure Logic Apps, Microsoft Power Automate, and Microsoft Power Apps offer over 325+ connectors to connect to Microsoft and non-Microsoft services, you may want to communicate with services that aren't available as prebuilt connectors.

Box 2: Microsoft Dataverse

The Microsoft Dataverse connector provides several triggers to start your flows and many actions that you can use to create or update data in Dataverse while your flows run. You can use Dataverse actions even if your flows don't use a trigger from the Dataverse connector.

Use the Microsoft Dataverse connector to create cloud flows that start when data changes in Dataverse tables and custom messages.

NEW QUESTION 98

- (Topic 4)

You are a Power Platform consultant for an internet support company. The company lacks a budget to buy third-party ISVs or add-ons. The company requires a new system that achieves the following:

- ? All support issues must come in by email, need to be logged, and assigned to the support group.
- ? Accounts must synchronize with the parent company Oracle database.
- ? Reports must be sent to the executives on a weekly basis.
- ? No custom code will be used in the system.

You need to recommend the components that should be configured. Which two components should you recommend? Each correct answer presents part of the solution.

NOTE: Each correct selection is worth one point.

- A. Power Virtual Agents
- B. Microsoft Dataverse
- C. server-side synchronization

D. Microsoft Customer Voice

Answer: BD

Explanation:

The Dynamics 365 Customer Voice data is stored in Microsoft Dataverse.

Dynamics 365 Customer Voice is an enterprise feedback management application you can use to easily keep track of the customer metrics that matter the most to your business. ... It provides a personalized experience, enabling you to collect customer feedback and get relevant insights quickly and easily, all in a few clicks.

Reference:

https://docs.microsoft.com/en-us/dynamics365/customer-voice/about https://docs.microsoft.com/en-us/dynamics365/customer-voice/data-flow

NEW QUESTION 100

HOTSPOT - (Topic 4)

You are a evaluating a solution design. You need to test the following scenarios: Mimic a user using an app.

- Obtain formal approval that an app meets customer-provided criteria.
- Confirmation that an app can manage expected peak loads.

Which test types should you use? To answer, select the appropriate options in the answer area.

NOTE: Each correct selection is worth one point.

Answer Area

Scenario

Mimic a user using an app.

Test type

Acceptance testing

UI testing

Acceptance testing

Performance testing

Load testing

Scenario

Obtain formal approval that an app meets customer-provided criteria.

Test type

Acceptance testing

Migration testing

Acceptance testing

Performance testing

UI testing

Scenario

Confirmation that an app can manage expected peak loads.

Test type

Performance testing

Unit testing

Acceptance testing

Performance testing

Integration testing

Answer:

Answer Area

Scenario

Mimic a user using an app.

Test type

Acceptance testing

UI testing

Acceptance testing

Performance testing

Load testing

Scenario

Obtain formal approval that an app meets customer-provided criteria.

Test type

Acceptance testing

Migration testing

Acceptance testing

Performance testing

UI testing

Scenario

Confirmation that an app can manage expected peak loads.

Test type

Performance testing

Unit testing

Acceptance testing

Performance testing

Integration testing

- A. Mastered
B. Not Mastered

Answer: A

NEW QUESTION 104

- (Topic 4)

You are designing a Power Platform solution for a company.

Users must be granted access only to data that is relevant to them.

You need to recommend actions to meet the requirements.

Which two recommendations should you make? Each correct answer presents part of the solution.

NOTE: Each correct selection is worth one point.

- A. Add column security profiles to applicable teams.
B. Define and configure security roles.
C. Create teams and assign security roles and users to the teams.
D. Create business units and assign security roles to the business units.

Answer: BD

Explanation:

To control data access, you must set up an organizational structure that both protects sensitive data and enables collaboration. You do this by setting up business units, security roles, and field security profiles.

Reference:
<https://docs.microsoft.com/en-us/power-platform/admin/security-roles-privileges>

NEW QUESTION 105

- (Topic 4)

A company uses two separate unlinked apps to manage sales leads: a Power Apps app and a third-party application.

The client has the following requirements:

? Manage all leads by using the Power Apps app.

? Create a lead in the Power Apps app when a user creates a lead in the third-party application.

? Update leads in the Power Apps app when a user updates a lead in the third-party application.

? Connect to the third-party application by using an API.

You need to recommend strategies to integrate the Power Apps app and the third-party application.

Which three options can you use to achieve the goal? Each correct answer presents part of the solution.

NOTE: Each correct selection is worth one point.

- A. Dual-write
- B. Custom connector
- C. Dataflow
- D. Power Automate cloud flow
- E. DataService connector

Answer: ADE

Explanation:

A: Customers should be able to adopt business applications from Microsoft and expect they speak the same language and seamlessly work together. Dual Write allows our customers to not think about these apps as different systems to write to independently; rather, the underlying infrastructure makes it seamless for these apps to write simultaneously.

D: Use Custom APIs to create your own APIs in Dataverse. With a Custom API you can consolidate a group of operations into an API that you and other developers can call in their code. The Common Data Service (current environment) connector enables calling Custom APIs actions in Power Automate.

E: Common Data Service provides access to the environment database on the Microsoft Common Data Service. It is available for Logic Apps, Power Automate, and Power Apps. Reference:
<https://docs.microsoft.com/en-us/business-applications-release-notes/april19/cdm-data-integration/dual-writelink-common-data-service-apps>
<https://docs.microsoft.com/en-us/connectors/commondataservice/> <https://docs.microsoft.com/en-us/powerapps/developer/data-platform/custom-api>

NEW QUESTION 107

HOTSPOT - (Topic 4)

A company offers continuing education courses for medical professionals. Each time a course is offered, the company tracks that the session has taken place in an Excel workbook.

The company maintains a list of required qualifications for an educator to teach a course. Educator qualifications range from languages spoken to advanced degrees.

The company needs the following custom table relationships defined:

? Associate educators with a list of their professional qualifications.

? Assign a primary educator to each course that is held.

? Collect information about every course that is held.

You need to determine the type of relationship that best fits the requirement.

Which type of table relationship should you use? To answer, select the appropriate options in the answer area.

NOTE: Each correct selection is worth one point.

Requirement	Relationship
Educators must be associated with their qualifications.	<div>▼</div> <div>Many-to-many relationship that uses a system generated table</div> <div>Many-to-many relationship that uses a custom table</div> <div>One-to-many relationship</div>
When a course is held there must be a primary educator assigned.	<div>▼</div> <div>Many-to-many relationship that uses a system generated table</div> <div>Many-to-many relationship that uses a custom table</div> <div>One-to-many relationship</div>
When a course is held, the company needs to collect information on that session.	<div>▼</div> <div>Many-to-many relationship that uses a system generated table</div> <div>Many-to-many relationship that uses a custom table</div> <div>One-to-many relationship</div>

- A. Mastered
- B. Not Mastered

Answer: A

Explanation:

Requirement	Relationship
Educators must be associated with their qualifications.	<div>▼</div> <div>Many-to-many relationship that uses a system generated table</div> <div>Many-to-many relationship that uses a custom table</div> <div>One-to-many relationship</div>
When a course is held there must be a primary educator assigned.	<div>▼</div> <div>Many-to-many relationship that uses a system generated table</div> <div>Many-to-many relationship that uses a custom table</div> <div>One-to-many relationship</div>
When a course is held, the company needs to collect information on that session.	<div>▼</div> <div>Many-to-many relationship that uses a system generated table</div> <div>Many-to-many relationship that uses a custom table</div> <div>One-to-many relationship</div>

NEW QUESTION 108

HOTSPOT - (Topic 4)

You are designing a Microsoft Power Platform solution for a company.

Which components should you recommend? To answer, select the appropriate options in the answer area.

NOTE: Each correct selection is worth one point.

Requirement	Component
Allow users to change the status of a record only if a custom column named Reason is populated.	<div>▼</div> <div>Business rule</div> <div>Power Automate flow</div> <div>Asynchronous plug-in</div> <div>Background workflow</div>
Prompt users to update each opportunity product record when an opportunity is won or lost.	<div>▼</div> <div>JavaScript code</div> <div>Real-time workflow</div> <div>Power Automate flow</div> <div>Asynchronous plug-in</div>

- A. Mastered
- B. Not Mastered

Answer: A

Explanation:

Box 1: Business rule

You can create business rules and recommendations to apply logic and validations without writing code or creating plug-ins. Business rules provide a simple interface to implement and maintain fast-changing and commonly used rules.

Box 2: Power Automate flow

Trigger the Power Automate flow with "When a record is updated", then add a Condition in the flow and configure it with Status Label equals to Won.

NEW QUESTION 112

- (Topic 4)

You are designing tables and columns for a Microsoft Power Platform solution The solution will contain an interactive experience dashboard.

You need to ensure that the columns you create can be used as global filters for the dashboard

Which two data types can you use? Each correct answer presents a complete solution. NOTE: Each correct selection is worth one point

- A. Yes/No
- B. Choice
- C. Text
- D. Multiline Text
- E. Lookup

Answer: AB

Explanation:

<https://docs.microsoft.com/en-us/powerapps/maker/data-platform/create-edit-field-solution-explorer#column-data-types>

With interactive dashboards, a chart uses the color assigned to the categories that make up the different values, even if the chart is configured to use random

colors, when the chart is configured to be grouped by any of the following column types:

Choice Yes/No

Status Reason

Reference:

<https://docs.microsoft.com/en-us/powerapps/maker/model-driven-apps/configure-interactive-experience-dashboards>

NEW QUESTION 115

- (Topic 4)

You are designing a model-driven app that allows a company to manage sales opportunities.

The company has a complex security model that includes the following requirements:

? The vice president of sales must be able to see opportunities for sales managers and sales representatives.

? Sales managers must be able to see opportunities for all sales representatives.

? Sales representatives must only see opportunities that they own.

You need to recommend security tools for controlling user access.

Which two tools should you recommend? Each correct answer presents part of the solution.

NOTE: Each correct selection is worth one point.

A. Account hierarchy

B. Field security profile

C. Position hierarchy

D. Security roles

Answer: CD

Explanation:

With the position hierarchy security, a user at a higher position has access to the records owned by a lower position user or by the team that a user is a member of, and to the records that are directly shared to the user or the team that a user is a member of.

The hierarchy security model is an extension to the earlier security models that use business units, security roles, sharing, and teams. It can be used in conjunction with all other existing security models.

Reference:

<https://docs.microsoft.com/en-us/dynamics365/customerengagement/on-premises/developer/security-dev/hierarchical-security-control-access-entities>

NEW QUESTION 118

HOTSPOT - (Topic 4)

You need to design a Power Platform solution that meets the following requirements:

? Capture data from a row during deletion to be used in an automated process.

? Use AI to process forms and automate data entry from paper-based forms.

Which requirements can be met by using out-of-the box Power Platform components?

Instructions: For each of the following statements, select Yes if the statement is true. Otherwise, select No.

NOTE: Each correct selection is worth one point.

Yes

No

Capture data from a row during deletion to be used in an automated process.

☐☐

Use AI to process forms and automate data entry from paper-based forms.

☐☐

A. Mastered

B. Not Mastered

Answer: A

Explanation:

Box 1: Yes

This can be done with Dataverse flows: The When a row is added, modified or deleted trigger runs a flow whenever a row of a selected table and scope changes or is created.

Box 2: Yes

AI Builder is a Microsoft Power Platform capability that provides AI models that are designed to optimize your business processes. AI Builder enables your business to use AI to automate processes and glean insights from your data in Power Apps and Power Automate.

NEW QUESTION 123

- (Topic 4)

Note: This question is part of a series of questions that present the same scenario. Each question in the series contains a unique solution that might meet the stated goals. Some question sets might have more than one correct solution, while others might not have a correct solution.

After you answer a question in this section, you will NOT be able to return to it. As a result, these questions will not appear in the review screen.

A company plans to automate the expense approval process.

Users currently enter data into an on-premises SQL Server database. You need to allow users to submit expenses from mobile devices.

Solution: Create a canvas app for expense data entry. Create a desktop flow. Create a cloud flow for approval and trigger the desktop flow to add data to the SQL Server database.

Does the solution meet the goal?

A. Yes

B. No

Answer: B

NEW QUESTION 124

- (Topic 4)

A company has a custom web-based solution that is hosted on Azure. You design a Power Platform solution to provide the company additional capabilities. You need to integrate the Power Platform solution with the web-based solution. What should you recommend?

- A. Connection reference
- B. Custom connector
- C. Desktop flow
- D. Data gateway

Answer: B

Explanation:

A custom connector in Power Platform is a wrapper around a REST API that allows Power Automate or Power Apps to communicate with that REST API. Connectors created in Power Automate are available in Power Apps. Likewise, connectors created in Power Apps are available in Power Automate.

Reference:

<https://docs.microsoft.com/en-us/learn/modules/create-custom-connector-power-platform/1-introduction>

NEW QUESTION 128

- (Topic 4)

Note: This question is part of a series of questions that present the same scenario. Each question in the series contains a unique solution that might meet the stated goals. Some question sets might have more than one correct solution, while others might not have a correct solution.

After you answer a question in this section, you will NOT be able to return to it. As a result, these questions will not appear in the review screen.

A company uses a Microsoft Excel sheet to manage its loan application process. The company wants to optimize the process.

You need to discover inefficiencies in the process.

Solution: Upload the activity data stored in the Excel sheet to the process advisor feature. Use task mining to discover inefficiencies in the process.

Does the solution meet the goal?

- A. Mastered
- B. Not Mastered

Answer: A

NEW QUESTION 129

HOTSPOT - (Topic 4)

A company plans to create a Power Platform solution that integrates with Dynamics 365 Sales.

The solution must meet the following requirements:

? Connect directly with a Microsoft Azure SQL database as an external data source at run time where specific data is available in the Dynamics 365 Sales solution without the need for data replication.

? An external system needs to send data to the company's Dynamics 365 Sales solution.

You need to recommend the most suitable solution to integrate Dynamics 365 Sales with both systems.

What should you recommend? To answer, select the appropriate option in the answer area.

NOTE: Each correct selection is worth one point.

Integration requirement	Solutions
Have read-only visibility of data from an external Azure SQL database.	<div><div></div><div><div>Use virtual tables.</div><div>Use a custom plug-in.</div><div>Use Dynamics 365 Web API.</div><div>Use a web resource to display data.</div></div></div>
External system sends data to Dynamics 365 Sales.	<div><div></div><div><div>Use a custom plug-in.</div><div>Use Dynamics 365 Web API.</div><div>Use a web resource to display data.</div></div></div>

Answer:

Integration requirement

Solutions

Have read-only visibility of data from an external Azure SQL database.

Use virtual tables. !

Use a custom plug-in.

Use Dynamics 365 Web API.

Use a web resource to display data.

External system sends data to Dynamics 365 Sales.

Use a custom plug-in.

Use Dynamics 365 Web API. !

Use a web resource to display data.

- A. Mastered
 B. Not Mastered

Answer: A

Explanation:

Box 1: Use Virtual tables

A virtual entity is a custom entity in Dynamics 365 Customer Engagement (on-premises) that has fields containing data from an external data source. Virtual entities appear in your app to users as regular entity records, but contain data that is sourced from an external database, such as an Azure SQL Database. Records based on virtual entities are available in all clients including custom clients developed using the Dynamics 365 Customer Engagement Web Services.

Box 2: Use Dynamics 365 Web API.

Dynamics 365 Web Services API: Many times, straight database-to-database integrations aren't a possibility. In these cases, the development of a solution may depend on utilization of the Dynamics 365 Customer Engagement web services API (Application Programming Interface).

NEW QUESTION 134

HOTSPOT - (Topic 4)

A company is creating a Power Platform solution to manage employees.

The company has the following requirements:

? Allow only the human resource manager to change an employee's employment status when an employee is dismissed.

? Allow only approved device types to access the solution and company data.

You need to recommend a solution that meets the requirements.

What should you recommend? To answer, select the appropriate options in the answer area.

NOTE: Each correct selection is worth one point.

Requirement

Configuration

Allow only the human resource manager to change an employee's employment status when an employee is dismissed.

Team access

Privacy preference

Field security profile

Hierarchy security profile

Allow only approved device types to access the solution and company data.

Endpoint security

Compliance policy

Conditional access

Mobile threat integration

- A. Mastered
 B. Not Mastered

Answer: A

Explanation:

Box 1: Field security profile

Record-level permissions are granted at the entity level, but you may have certain fields associated with an entity that contain data that is more sensitive than the other fields. For these situations, you use field-level security to control access to specific fields.

Field-level security is available for the default fields on most out-of-box entities, custom fields, and custom fields on custom entities. Field-level security is managed by the security profiles.

Box 2: Compliance policy

Compliance policy settings – Tenant-wide settings that are like a built-in compliance policy that every device receives. Compliance policy settings set a baseline for how compliance policy works in your Intune environment, including whether devices that haven't received any device compliance policies are compliant or noncompliant.

Note: Mobile device management (MDM) solutions like Intune can help protect organizational data by requiring users and devices to meet some requirements. In Intune, this feature is called compliance policies.

Compliance policies in Intune:

Define the rules and settings that users and devices must meet to be compliant.

Include actions that apply to devices that are noncompliant. Actions for noncompliance can alert users to the conditions of noncompliance and safeguard data on noncompliant devices.

Can be combined with Conditional Access, which can then block users and devices that don't meet the rules.

NEW QUESTION 137

- (Topic 4)

You are designing forms for a Microsoft Power Platform solution. Each person must see only the columns required for their department.

Department	Requirements
Inside sales	<ul style="list-style-type: none">• Use only a browser-based app.• Include fields for contact name, phone number, product, order date, and total amount owed.
Fulfillment	<ul style="list-style-type: none">• Use either a mobile or browser-based app.• Include fields for contact name, product, and order date.
Field sales	<ul style="list-style-type: none">• Use only a mobile app.• Include fields for contact name, address, phone number, and product.

You need to ensure that the forms open correctly, display only the fields needed, and that data can be entered quickly. How should you design the form?

- A. Create one form for each department Add only columns needed on the form for each departmen
- B. Assign the appropriate security role to each form.
- C. Create a shared form for all department
- D. Add all the column
- E. Add column-level security to columns not needed for each department
- F. Create one form for each departmen
- G. Add all columns needed for all department
- H. Use business rules to hide columns.
- I. Add new columns to an existing for
- J. Grant all departments security roles for that form.

Answer: A

NEW QUESTION 139

.....

THANKS FOR TRYING THE DEMO OF OUR PRODUCT

Visit Our Site to Purchase the Full Set of Actual PL-600 Exam Questions With Answers.

We Also Provide Practice Exam Software That Simulates Real Exam Environment And Has Many Self-Assessment Features. Order the PL-600 Product From:

<https://www.2passeasy.com/dumps/PL-600/>

Money Back Guarantee

PL-600 Practice Exam Features:

- * PL-600 Questions and Answers Updated Frequently
- * PL-600 Practice Questions Verified by Expert Senior Certified Staff
- * PL-600 Most Realistic Questions that Guarantee you a Pass on Your FirstTry
- * PL-600 Practice Test Questions in Multiple Choice Formats and Updatesfor 1 Year