

Exam Questions HPE6-A73

Aruba Certified Switching Professional Exam

<https://www.2passeasy.com/dumps/HPE6-A73/>



NEW QUESTION 1

An administrator is supporting a network with the access layer consisting of AOS-CX 6300 and 6400 switches. The administrator needs to quickly deploy Aruba IAPs and security cameras in the network, ensuring that the correct QoS and VLAN settings are dynamically applied to the switch ports. Currently, switches are not configured to do device authentication, and no authentication server exists in the network.

Which AOS-CX feature should the administrator use to dynamically assign the policy settings to the correct switch ports?

- A. Device profiles
- B. Change of authorization
- C. Dynamic segmentation
- D. Voice VLANs

Answer: C

NEW QUESTION 2

Which AOS-CX switches support weighted fair queuing (WFQ)?

- A. Both 8320 and 8325
- B. Both 6300 and 6400
- C. 8400 only
- D. 6300 only

Answer: C

NEW QUESTION 3

What is correct regarding rate limiting and egress queue shaping on AOS-CX switches?

- A. Rate limiting and egress queue shaping can be used to restrict inbound traffic
- B. Limits can be defined only for broadcast and multicast traffic
- C. Rate limiting and egress queue shaping can be applied globally
- D. Traffic rate limit is configured on queue level

Answer: D

NEW QUESTION 4

A company is implementing a new wireless design and needs it to support high availability, even during times of switch system upgrades. The solution will involve Aruba Mobility Controller (MC) and Aruba AP connections requiring POE. Which campus AOS-CX switch solution and virtual switching should the company implement at the campus access layer?

- A. AOS-CX 6400 and VSX
- B. AOS-CX 6300 and VSF
- C. AOS-CX 8325 and VSF
- D. AOS-CX 8400 and VSX

Answer: B

NEW QUESTION 5

Which option correctly defines how to identify a VLAN as a voice VLAN on an AOS-CX switch?

- A. Switch(config)# port-access lldp-group <LLDP-group-name> Switch(config-lldp-group)# vlan <VLAN-ID>
- B. Switch(config)# port-access role <role-name> Switch(config-pa-role)# vlan access <VLAN-ID>
- C. Switch(config)# vlan <VLAN-ID> Switch(config-vlan-<VLAN-ID>)# voice
- D. Switch(config)# vlan <VLAN-ID> voice

Answer: C

NEW QUESTION 6

Examine the following AOS-CX configuration:

```
Switch(config)# class ip IoT-traffic
Switch(config-class-ip)# match ip 192.168.0.0/16 any
Switch(config-class-ip)# exit
Switch(config)# pbr-action-list reroute
Switch(config-prb-action-list)# default-nexthop 10.100.1.2
Switch(config-prb-action-list)# exit
Switch(config)# policy IoT-policy
Switch(config-policy)# class ip IoT-traffic action pbr reroute
Switch(config-policy)# exit
Switch(config)# interface vlan 999
Switch(config-if)# apply policy IoT-policy routed-in
Switch(config-if)# exit
```

Based on this configuration, which statement is correct regarding IoT traffic?

- A. If 10.100.1.2 is not reachable, the IoT traffic will be automatically dropped by the switch
- B. If a specific route is not available in the routing table, the traffic will be routed to 10.100.1.2
- C. The next hop of 10.100.1.2 can be one or more hops away from the AOS-CX switch
- D. All routes are ignored in the routing table for IoT traffic, which is routed to 10.100.1.2

Answer: B

NEW QUESTION 7

An administrator of a large campus network needs a solution that will provide root cause analytics to quickly identify problems so that they can quickly be fixed. Which AOS-CX switch feature should the administrator utilize to help with root cause analytics?

- A. NAE
- B. VoQ
- C. NetEdit
- D. VSX

Answer: A

NEW QUESTION 8

How does PIM build the IP multicast routing table to route traffic between a multicast source and one or more receivers?

- A. It uses the unicast routing table and reverse path forwarding (RPF)
- B. It uses IGMP and calculates a shortest path tree (SPT)
- C. It uses the shortest path first (SPF) algorithm derived from link state protocols
- D. It uses the Bellman-Ford algorithm derived from distance vector protocols

Answer: A

NEW QUESTION 9

An administrator wants to track what configuration changes were made on a switch. What should the administrator implement to see the configuration changes on an AOS-CX switch?

- A. AAA authorization
- B. Network Analysis Engine (NAE)
- C. AAA authentication
- D. VSX synchronization logging

Answer: B

NEW QUESTION 10

An administrator has an aggregation layer of 8325CX switches configured as a VSX pair. The administrator is concerned that when OSPF network changes occur, the aggregation switches will respond to the changes slowly, and this will affect network connectivity, especially VoIP calls, in the connected access layer switches. What should the administrator do on the aggregation layer switches to alleviate this issue?

D18912E1457D5D1DDCBD40AB3BF70D5D

- A. Implement route aggregation
- B. Implement bidirectional forwarding detection (BFD)
- C. Reduce the hello and dead interval timers
- D. Implement graceful restart

Answer: B

NEW QUESTION 10

When implementing deficit weighted round robin queuing, what importance does the weight value have?

- A. Prioritizing latency-sensitive traffic

- B. Queue priority in processing traffic
- C. Strict priority queue
- D. Percentage of interface bandwidth

Answer: B

NEW QUESTION 13

A network administrator is attempting to troubleshoot a connectivity issue between a group of users and a particular server. The administrator needs to examine the packets over a period of time from their desktop; however, the administrator is not directly connected to the AOS-CX switch involved with the traffic flow. What is correct regarding the ERSPAN session that needs to be established on an AOS-CX switch? (Choose two.)

- A. On the source AOS-CX switch, the destination specified is the switch to which the administrator's desktop is connected
- B. On the source AOS-CX switch, the destination specified is the administrator's desktop
- C. The encapsulation protocol used is GRE
- D. The encapsulation protocol used is VXLAN
- E. The encapsulation protocol is UDP

Answer: AC

NEW QUESTION 17

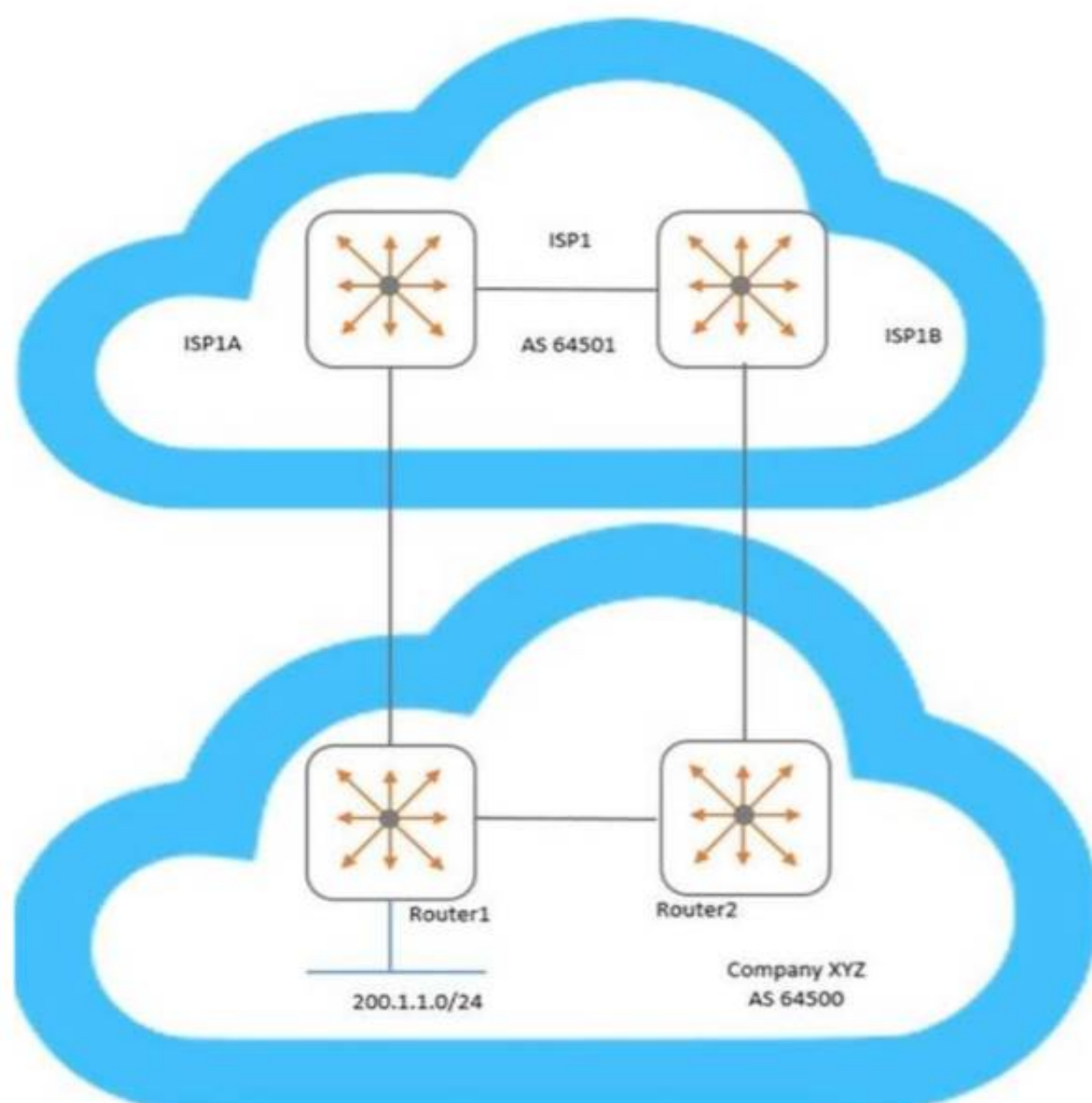
The AOS-CX mobile app allows a network engineer or technician to perform which tasks? (Choose two.)

- A. Use NetEdit to manage switch configuration.
- B. Create a stack of AOS-CX switches.
- C. Transfer files between the switch and your mobile device.
- D. Securely access the switch using SSH.
- E. Schedule an operating system upgrade.

Answer: CD

NEW QUESTION 20

Examine the network topology.



Company XYZ has two connections to a service provider (ISP1). Here is the configuration of Router1:


```
Router1(config)# ip prefix-list AS64500-routes permit 200.1.1.0/24
Router1(config)# route-map To-AS64501 permit seq 10
Router1(config-route-map)# match ip address prefix-list AS64500-routes
Router1(config-route-map)# set metric 100
Router1(config-route-map)# exit
Router1(config)# router bgp 64500
Router1(config-bgp)# address-family ipv4 unicast
Router1(config-bgp-ipv4-uc)# neighbor 192.168.1.1 route-map To-AS64501 out
```

Here is the configuration of Router2:

```
Router2(config)# ip prefix-list AS64500-routes permit 200.1.1.0/24
Router2(config)# route-map To-AS64501 permit seq 10
Router2(config-route-map)# match ip address prefix-list AS64500-routes
Router2(config-route-map)# set metric 200
Router2(config-route-map)# exit
Router2(config)# router bgp 64500
Router2(config-bgp)# address-family ipv4 unicast
Router2(config-bgp-ipv4-uc)# neighbor 192.168.2.1 route-map To-AS64501 out
```

Based on configuration of Router1 and Router2, which BGP metric is being manipulated?

- A. Weight
- B. Multiple exit discriminator
- C. Local preference
- D. AS path length

Answer: B

NEW QUESTION 25

A network administrator is implementing OSPF, where there are two exit points. Each exit point has a stateful, application inspection firewall to implement company policies.

What would the best practice be to ensure that one firewall will see both directions of the traffic, preventing asynchronous connections in the network?

- A. Both ASBRs should define External Type 1 routes for the
- B. Both ASBRs should define External Type 1 routes for the
- C. Both ASBRs should define External Type 2 routes for the
- D. Both ASBRs should define External Type 2 routes for the

Answer: A

NEW QUESTION 28

What is correct regarding the tunneling of user traffic between AOS-CX switches and Aruba Mobility Controllers (MCs)?

- A. Uses IPSec to protect the management and data traffic
- B. Uses IPSec to protect the management traffic
- C. Supports only port-based tunneling
- D. Uses the same management protocol as Aruba APs

Answer: D

NEW QUESTION 32

Which concept is implemented using Aruba's dynamic segmentation?

- A. Root of trust
- B. Device fingerprinting
- C. Zero Touch Provisioning
- D. Colorless port

Answer: B

NEW QUESTION 37

An administrator creates an ACL rule with both the "count" and "log" option enabled. What is correct about the action taken by an AOS-CX switch when there is a match on this rule?

- A. By default, a summarized log is created every minute with a count of the number of matches
- B. Logging will not include certificate and TLS events, but counting will
- C. The "count" and "log" options are processed by the AOS-CX switch's hardware ASIC
- D. The total in the "log" record and the count could contain different rule matching statistics

Answer: D

NEW QUESTION 41

An administrator will be implementing tunneling between AOS-CX switches and Aruba gateways. Which list of protocols must minimally be allowed by an intermediate firewall between two sets of devices?

- A. IP protocol 50 and UDP 8209
- B. UDP 4500 and IP protocol 47
- C. UDP 8211 and IP protocol 47
- D. UDP 4500 and UDP 8209

Answer: B

NEW QUESTION 45

Which statement is correct regarding ACLs and TCAM usage?

- A. Applying an ACL to a group of ports consumes the same resources as specific ACE entries
- B. Using object groups consumes the same resources as specific ACE entries
- C. Compression is automatically enabled for ASIC TCAMs on AOS-CX switches
- D. Applying an ACL to a group of VLANs consumes the same resources as specific ACE entries

Answer: B

NEW QUESTION 50

Which AOS-CX feature is used to prevent head-on-line (HOL) blocking?

- A. VSF
- B. WFQ
- C. VOQ
- D. VSX

Answer: C

NEW QUESTION 53

An administrator has an AOS-CX switch configured with:

```
router ospf 1
area 0
```

```
area 1 stub no-summary
```

It is the only ABR for area 1. The switch has the appropriate adjacencies to routing switches in areas 0 and 1. The current routes in each area are:

Area 0: 5 routes (LSA Type 1 and 2)

Area 1: 10 routes (LSA Type 1 and 2)

External routes: 2 (LSA Type 5)

Based on the above configuration, how many OSPF routes will routing switches see in Area 1?

- A. 15
- B. 6
- C. 11
- D. 12

Answer: C

NEW QUESTION 57

How should a network administrator add NAE scripts and implement NAE agents that will run on an AOS-CX switch?

- A. Use the web interface of the NetEdit server
- B. Use the web interface of the AOS-CX switch
- C. Use the web interface of Aruba Central
- D. Use the CLI of the AOS-CX switch

Answer: B

NEW QUESTION 61

An administrator is configuring BGP and has two connections to a service provider to two different local routers.

Which BGP metric should the administrator configure to influence which local router the service provider will use to reach certain routes?

- A. Weight
- B. Multiple exit discriminator
- C. Local preference
- D. Origin

Answer: C

NEW QUESTION 63

Examine the partial output of the BGP routing table of an AOS-CX switch:

Switch# show bgp

<-output omitted->

Network	Nexthop	Metric	LocPrf	Weight	Path
* e 1.0.0.0/8	192.168.1.5	0	100	0	100 ?
* e 1.0.0.0/8	192.168.2.5	0	100	0	200 100 i
* e 1.0.0.0/8	192.168.3.5	0	200	20	300 400 100 ?
* e 1.0.0.0/8	192.168.4.5	0	50	0	400 200 100 i

The switch is learning about four possible path to reach the 1.0.0.0/8 network. Based on this output, which next-hop route will the AOS-CX select to be placed in the IP routing table?

- A. 192 168 1 5
- B. 192 168 2 5
- C. 192 168 3 5
- D. 192 1684 5

Answer: C

NEW QUESTION 66

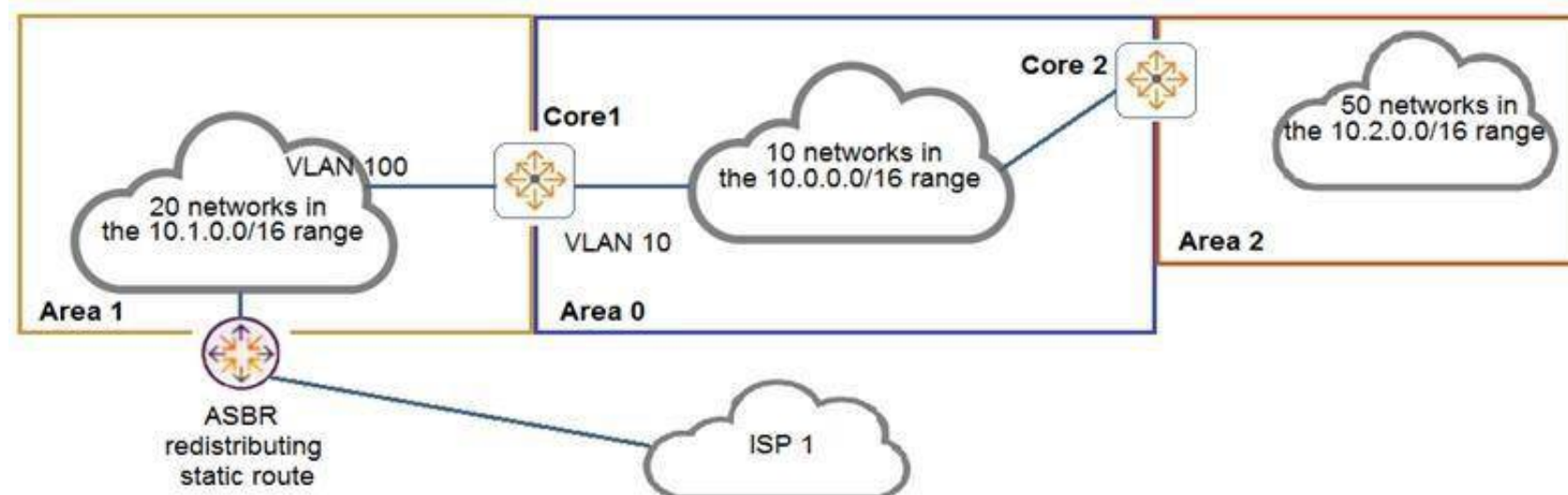
What are best practices when implementing VSX on AOS-CX switches? (Choose two.)

- A. The ISL lag should use the default MTU size.
- B. Timers should be left at their default values.
- C. The default system MAC addresses should be used.
- D. The keepalive connection should use a direct layer-3 connection.
- E. The ISL lag should use at least 10GbE links or faster.

Answer: BD

NEW QUESTION 71

Examine the network topology.



The network is configured for OSPF with the following attributes:

Core1 and Core2 and ABRs

Area 1 has 20 networks in the 10.1.0.0/16 range

Area 0 has 10 networks in the 10.0.0.0/16 range

Area 2 has 50 networks in the 10.2.0.0/16 range

The ASBR is importing a static route into Area 1

Core2 has a summary for Area 2: area 0.0.0.2 range 10.2.0.0/16 type inter-area

Here is the OSPF configuration performed on Core1:


```
Core1(config)# router ospf 1
Core1(config-router)# router-id 10.0.0.1
Core1(config-router)# passive-interface default
Core1(config-router)# area 0.0.0.0
Core1(config-router)# area 0.0.0.1 stub
Core1(config-router)# area 0.0.0.1 range 10.1.0.0/16 type inter-area
Core1(config-router)# area 0.0.0.2
Core1(config-router)# area 0.0.0.0 range 10.0.0.0/16 type inter-area
Core1(config-router)# exit
Core1(config)# interface vlan 10
Core1(config-if)# ip address 10.0.1.1/24
Core1(config-if)# ip ospf 1 area 0
Core1(config-if)# exit
Core1(config)# interface vlan 100
Core1(config-if)# ip address 10.1.1.1/24
Core1(config-if)# ip ospf 1 area 1
Core1(config-if)# exit
```

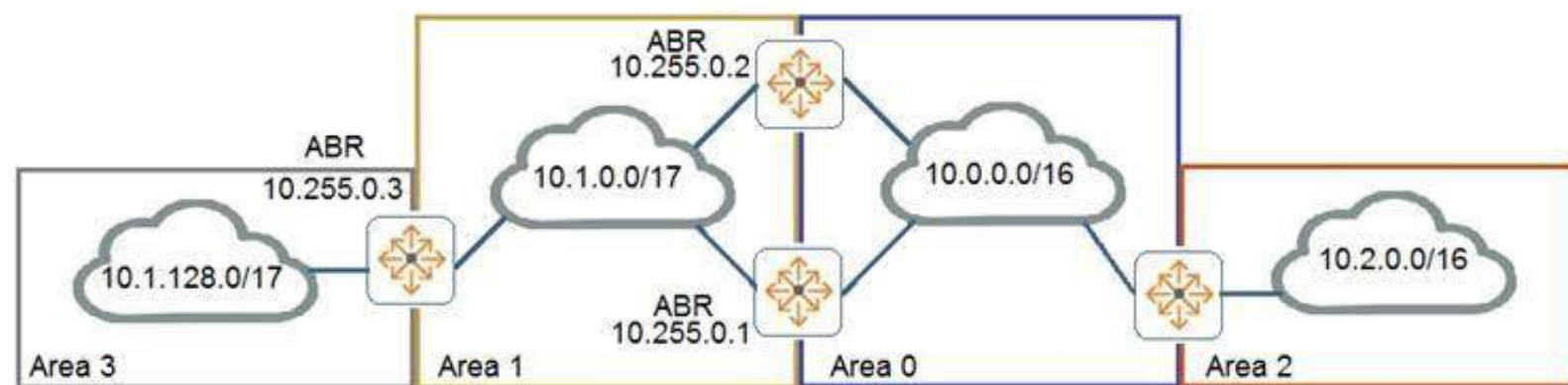
Based on the above information, what is correct?

- A. Area 0 has 13 routes
- B. Core1 has no OSPF routes
- C. Core1 has received one LSA Type 5 from the ASBR
- D. Area 1 has 23 routes

Answer: D

NEW QUESTION 73

Examine the attached exhibit.



The network administrators is trying to add a remote location as area 3 to the network shown in the diagram. Based on current connection restrictions, the administrator cannot connect area 3 directly to area 0. The network is using AOS-CX switches. Which feature should the administrator implement to provide connectivity to the remote location?

- A. Not-so-stubby areas
- B. Bidirectional forward detection (BFD)
- C. OSPFv3
- D. Virtual links

Answer: D

NEW QUESTION 74

An AOS-CX switch is configured to implement downloadable user roles. Examine the AOS-CX switch output:


```
Access1(config)# show aaa authentication port-access interface all client-status
```

```
Port Access Client Status Details
```

```
Client 00:50:56:b1:7a:37
```

```
=====
```

```
Session Details
```

```
-----
```

```
Port : 1/1/3
```

```
Session Time : 1887s
```

```
Authentication Details
```

```
-----
```

```
Status : mac-auth Authenticated
```

```
Auth Precedence : dot1x - Not attempted, mac-auth - Authenticated
```

```
Authorization Details
```

```
-----
```

```
Role :
```

```
Status : Not ready
```

Based on this output, what is the state of the user's access?

- A. No downloadable user role exists
- B. MAC authentication has passed, but 802.1X authentication is in progress
- C. The RADIUS request timed out to the AAA server
- D. The port should be configured for 802.1X

Answer: D

NEW QUESTION 77

An administrator is looking for a data center switching solution that will greatly reduce the likelihood of dropped frames when uplink congestion is experienced. Which AOS-CX switch queuing feature meets the administrator's needs?

- A. FIFO
- B. VOQ
- C. WFQ
- D. DWRR

Answer: B

NEW QUESTION 79

A network engineer is having a problem adding a custom-written script to an AOS-CX switch's NAE GUI. The script was written in Python and was successfully added on other AOS-CX switches. The engineer examines the following items from the CLI of the switch:

```
switch# show capacities-status nae
```

System Capacities Status: Filter NAE

Capacity Status Name	Value	Maximum
Number of configured NAE agents currently active in the system	1	100
Number of configured NAE monitors currently active in the system	7	500
Number of configured NAE scripts currently active in the system	50	50

```
switch# show ntp status
```

NTP Status Information

NTP : Disabled

NTP Authentication : Disabled

NTP Server Connections : Using the default VRF

System time : Sat May 2 11:50:55 UTC 2020

NTP uptime : 0 minutes, 0 seconds

Not synchronized with an NTP server.

```
switch# show crypto pki certificate
```

Certificate Name	Cert Status	Associated Applications
local-cert	installed	captive-portal, hsc, https-server,
syslog-client		

```
switch# show crypto pki application
```

Associated Applications	Certificate Name	Cert Status
captive-portal		not configured, using local-cert
hsc		not configured, using local-cert
https-server		not configured, using local-cert
syslog-client		not configured, using local-cert

What should the engineer perform to fix this issue?

- A. Install the script's signature before installing the new script
- B. Ensure the engineer's desktop and the AOS-CX switch are synchronized to the same NTP server
- C. Enable trust settings for the AOS-CX switch's SSL certificate
- D. Remove a script that is no longer used before installing the new script

Answer: D

NEW QUESTION 81

Examine the following AOS-CX switch configuration:

```
Access(config)# access-list ip ext
Access(config-acl-ip)# permit ip any 10.0.11.0/255.0.255.0 count
Access(config-acl-ip)# permit ip any 10.0.12.0/255.0.255.0 log
Access(config-acl-ip)# exit
Access(config)# interface 1/1/3
Access(config-if)# apply access-list ip ext in
Access(config-if)# exit
```

Which statement correctly describes what is allowed for traffic entering interface 1/1/3?

- A. IP traffic from 10.1.11.0/24 is allowed to access 10.1.110.0/24
- B. IP traffic from 10.0.11.0/24 is allowed to access 10.1.12.0/24
- C. Traffic from 10.0.12.0/24 will generate a log record when accessing 10.0.11.0/24
- D. IP traffic from 10.1.12.0/24 is allowed to access 172.0.1.0/23

Answer: B

NEW QUESTION 84

A network administrator needs to replace an antiquated access layer solution with a modular solution involving AOS-CX switches. The administrator wants to leverage virtual switching technologies. The solution needs to support high-availability with dual-control planes. Which solution should the administrator implement?

- A. AOS-CX 8325
- B. AOS-CX 6300
- C. AOS-CX 6400
- D. AOS-CX 8400

Answer: C

NEW QUESTION 88

When implementing user-based tunneling on an AOS-CX switch, which component defines the primary and backup Aruba gateways?

- A. Transit VLAN
- B. Gateway role
- C. Server group
- D. Zone

Answer: D

NEW QUESTION 92

A network administrator wants to centralize the management of AOS-CX switches by implementing NetEdit. How should the administrator purchase and/or install the NetEdit solution?

- A. Install as a hardware appliance
- B. Installed on a supported version of RedHat Enterprise Linux
- C. Installed in a virtualized solution by using the Aruba-supplied OVA file
- D. Installed on a supported version of Debian Linux

Answer: C

NEW QUESTION 93

A company requires access by all users, guests, and employees to be authenticated. Employees will be authenticated using 802.1X, whereas guests will be authenticated using captive portal. Which type of authentication must be configured on an AOS-CX switch ports where both guests and employees connect?

- A. Both 802.1X and captive portal
- B. 802.1X only
- C. Both 802.1X and MAC-Auth
- D. 802.1X, captive portal, and MAC-Auth

Answer: C

NEW QUESTION 94

Examine the following AOS-CX switch configuration:

```
Switch(config-addgroup-ip)# object-group ip address servers
Switch(config-addgroup-ip)# 10.1.0.100
Switch(config-addgroup-ip)# 10.1.1.100
Switch(config-addgroup-ip)# exit
```

Which access control entries would allow web traffic to the web servers 10.1.0.100 and 10.1.1.100?

- A. permit tcp servers eq 80
- B. permit tcp any 10.1.0.100 0.0.1.0 eq 80
- C. permit tcp any 10.1.0.100/10.1.1.100 eq 80
- D. permit tcp any 10.1.0.100/255.255.254.255 eq 80

Answer: B

NEW QUESTION 96

A company has an existing wireless solution involving Aruba APs and Mobility controllers running 8.4 code. The solution leverages a third-party AAA solution. The company is replacing existing access switches with AOS-CX 6300 and 6400 switches. The company wants to leverage the same security and firewall policies for both wired and wireless traffic.

Which solution should the company implement?

- A. RADIUS dynamic authorization
- B. Downloadable user roles
- C. IPSec
- D. User-based tunneling

Answer: D

NEW QUESTION 101

What is correct regarding rate limiting and egress queue shaping on AOS-CX switches?

- A. Only a traffic rate and burst size can be defined for a queue
- B. Limits can be defined only for broadcast and multicast traffic
- C. Rate limiting and egress queue shaping can be used to restrict inbound traffic
- D. Rate limiting and egress queue shaping can be applied globally

Answer: A

NEW QUESTION 102

What is correct regarding the operation of VSX and multicasting with PIM-SM routing configured?

- A. Each VSX peers runs PIM and builds its own group databas
- B. One of the VSX peers is elected as the designated router (DR) to forward multicast streams to a receiver VLAN

- C. Each VSX peers runs PIM and creates a shared group databas
- D. Both VSX peers can forward multicast streams to receivers in a VLAN, achieving load sharing
- E. Each VSX peers runs PIM and builds its own group databas
- F. Both VSX peers can forward multicast streams to receivers in a VLAN, achieving load sharing
- G. Each VSX peers runs PIM and creates a shared group databas
- H. One of the VSX peers is elected as the designated router (DR) to forward multicast streams to a receiver VLAN

Answer: A

NEW QUESTION 105

A network engineer is using NetEdit to manage AOS-CX switches. The engineer notices that a lot of thirdparty VoIP phones are showing up in the NetEdit topology. The engineer deletes these, but they are automatically rediscovered by NetEdit and added back in. What should the administrator do to solve this problem?

- A. Change the VoIP phone SNMP community string to something unknown by NetEdit
- B. Disable LLDP globally on the AOS-CX switches where phones are connected
- C. Disable SSH access on all the VoIP phones
- D. Disable the RESTful API on all the VoIP phones

Answer: A

NEW QUESTION 108

A network administrator is implementing a configuration plan in NetEdit. The administrator used NetEdit to push the configuration plan to the switch. Which option in the NetEdit planning section should the administrator select to save the configuration running on the switch to the startup-config?

- A. EDIT
- B. VALIDATE
- C. COMMIT
- D. DEPLOY

Answer: C

NEW QUESTION 110

Which protocols are used by NetEdit to interact with third-party devices? (Choose two.)

- A. telnet
- B. SNMP
- C. SSH
- D. Restful API
- E. CDP

Answer: BC

NEW QUESTION 112

Examine the AOS-CS switch output:

```
Switch# show aaa authentication port-access interface 1/1/1 client-status
```

```
Port Access Client Status Details
```

```
Client 00:50:56:b1:7a:37, icx-employee
```

```
Session Details
```

```
Port      : 1/1/3
Session Time : 31273s
```

```
Authentication Details
```

```
Status      : dot1x Authenticated
Auth Precedence : dot1x - Authenticated, mac-auth - Not attempted
```

```
Authorization Details
```

```
Role       : aruba_contractor-3044-7
Status     : Applied
```

Based on this output, what is correct?

- A. 802.1X authentication was successful, but MAC authentication is yet to start
- B. 802.1X authentication occurred and downloadable user roles are deployed
- C. A local user role was deployed using a ClearPass solution
- D. Only 802.1X authentication is configured on the port

Answer: B

NEW QUESTION 114

.....

THANKS FOR TRYING THE DEMO OF OUR PRODUCT

Visit Our Site to Purchase the Full Set of Actual HPE6-A73 Exam Questions With Answers.

We Also Provide Practice Exam Software That Simulates Real Exam Environment And Has Many Self-Assessment Features. Order the HPE6-A73 Product From:

<https://www.2passeasy.com/dumps/HPE6-A73/>

Money Back Guarantee

HPE6-A73 Practice Exam Features:

- * HPE6-A73 Questions and Answers Updated Frequently
- * HPE6-A73 Practice Questions Verified by Expert Senior Certified Staff
- * HPE6-A73 Most Realistic Questions that Guarantee you a Pass on Your FirstTry
- * HPE6-A73 Practice Test Questions in Multiple Choice Formats and Updatesfor 1 Year