

## Exam Questions HPE6-A72

Aruba Certified Switching Associate Exam

<https://www.2passeasy.com/dumps/HPE6-A72/>



### NEW QUESTION 1

```
Core# configure terminal
Core(config)# vrf Green
Core(config-vrf)# exit
Core(config)#
Core(config)# interface vlan 50
Core(config-if-vlan)#
?
```

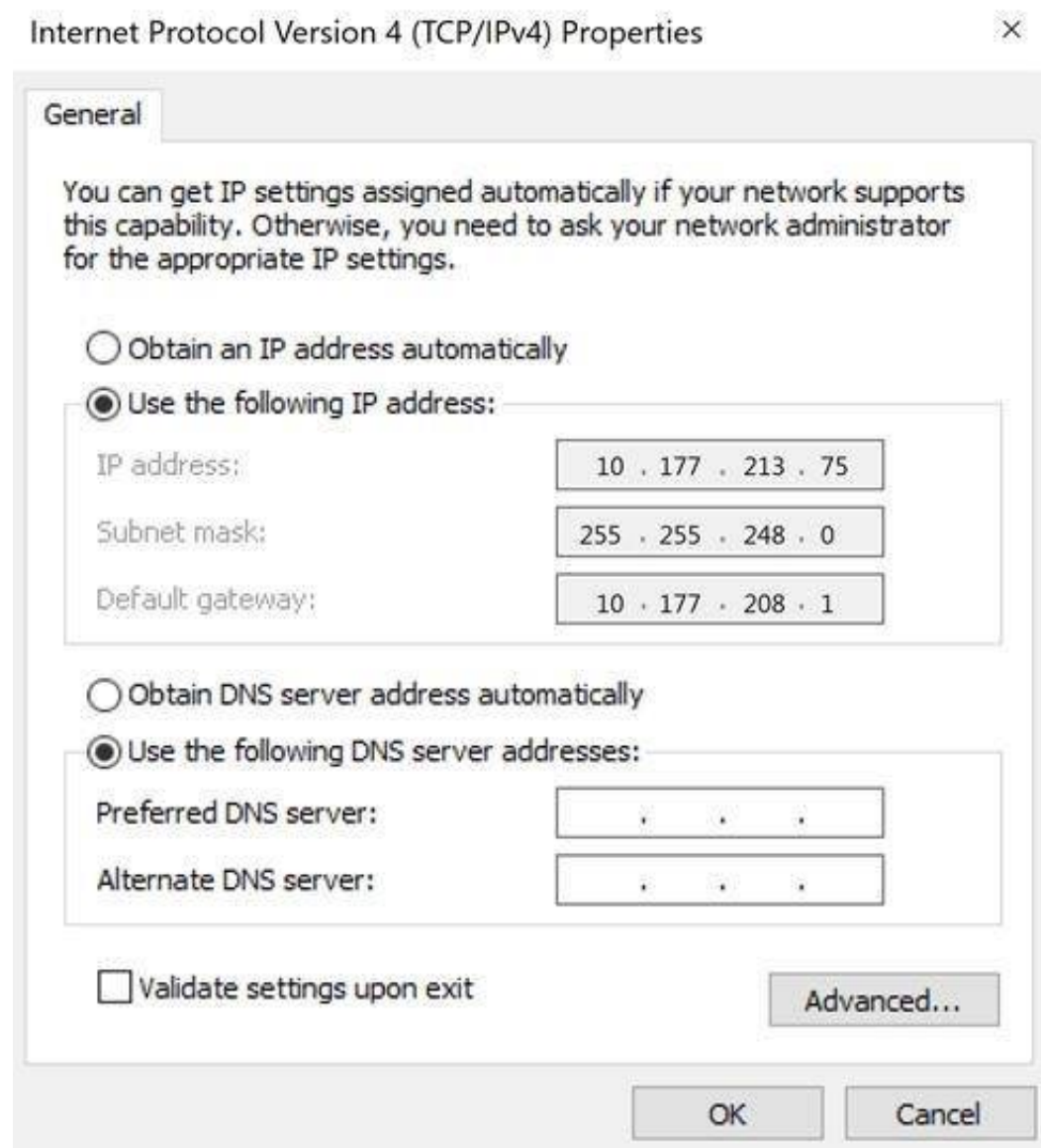
Given the configuration on the CORE switch shown above, what command would follow to assign the switched virtual interface (SVI) vlan 50 to the VRF created?

- A. Core(config-if-vlan)# vrf attach Green
- B. Core(config-if-vlan)# ip vpn-instance Green
- C. Core(config-if-vlan)# ip vrf forwarding Green
- D. Core(config-if-vlan)# routing-context Green vrf

**Answer: A**

### NEW QUESTION 2

Refer to the exhibit.



Using the static IP address configured above, what is the converted binary value of the third octet assigned to the local interface?

- A. 11010101
- B. 10110001
- C. 01001011
- D. 11111000

**Answer: A**

### NEW QUESTION 3

DRAG DROP

Match the switching term to the correct definition.

## Term

Broadcast Domain
Collision Domain
CSMA/CD
Forwarding Table





## Definition

defines the group of devices that are on the same network segment that are capable of receiving and responding to frames destined to FF:FF:FF:FF:FF:FF

the FIB used by switches matching known-source mac-addresses to the layer one port they are learned on

the mechanism used by Compute NICs and Switchports operating in half-duplex to detect and recover from frame collisions

the segment of a network connected by a shared medium, such as a hub, that is affected when two or more frames are sent at the same time

- A. Mastered  
 B. Not Mastered

Answer: A

Explanation:

## Term

Broadcast Domain
Collision Domain
CSMA/CD
Forwarding Table





## Definition

defines the group of devices that are on the same network segment that are capable of receiving and responding to frames destined to FF:FF:FF:FF:FF:FF

the FIB used by switches matching known-source mac-addresses to the layer one port they are learned on

the mechanism used by Compute NICs and Switchports operating in half-duplex to detect and recover from frame collisions

the segment of a network connected by a shared medium, such as a hub, that is affected when two or more frames are sent at the same time

## NEW QUESTION 4

What are two features of the three-tier designs? (Choose two.)

- A. removes the distribution layer in favor of a spine-leaf design used in modern data center deployments  
 B. adds a distribution layer to free up resources from the Core for improved performance and routing throughput  
 C. a more scalable design over by leveraging a distribution layer to handle Layer 3 routing and access control in large deployments  
 D. uses only Layer 2 access on the Access and the Core with Layer 3 routing and access control provided at the distribution layer  
 E. is considered legacy by requiring a large flat layer-two broadcast domain from Core to Access and should be avoided

Answer: BC

## NEW QUESTION 5

The section in blue can be ignored.

```
SW1(config)# interface 1/1/1-1/1/2
```

```
SW1(config-if-<1/1/1-1/1/2)# vlan access 2
```

```
SW1(config-if-<1/1/1-1/1/2)# exit
```

```
SW1(config)# interface 1/1/11-1/1/17
```

```
SW1(config-if-<1/1/11-1/1/17)# vlan access 17
```

```
SW1(config-if-<1/1/11- 1/1/17)# exit
```

After completing the above commands, what is the expected output of show vlan with no other vlan commanded having been added?

- A.



SW1# show vlan

VLAN	Name	Status	Reason	Type	Interfaces
1	DEFAULT_VLAN_1	up	ok	default	1/1/2
2		up	ok	static	1/1/2
11		up	ok	static	1/1/17
12		up	ok	static	1/1/17
13		up	ok	static	1/1/17
14		up	ok	static	1/1/17
15		up	ok	static	1/1/17
16		up	ok	static	1/1/17
17		up	ok	static	1/1/17

B. SW1# show vlan

VLAN	Name	Status	Reason	Type	Interfaces
1	DEFAULT_VLAN_1	up	ok	default	1/1/1-1/1/24
2		up	ok	static	1/1/1-1/1/2
17		up	ok	static	1/1/11-1/1/17

C. SW1# show vlan

VLAN	Name	Status	Reason	Type	Interfaces
2	DEFAULT_VLAN_2	up	ok	static	1/1/1-1/1/2
17		up	ok	static	1/1/11-1/1/17

D. SW1# show vlan

VLAN	Name	Status	Reason	Type	Interfaces
1	DEFAULT_VLAN_1	up	ok	default	<output omitted>
2		up	ok	static	1/1/1-1/1/2
17		up	ok	static	1/1/11-1/1/17

Answer: D

#### NEW QUESTION 6

What are two OSPF attributes within the hello messages that must match to successfully establish neighbor relationships? (Choose two.)

- A. Router ID
- B. Priority
- C. Hello and Dead intervals
- D. Area ID
- E. Process ID

Answer: CD

#### NEW QUESTION 7

Your customer has 349 users in a two-story building.

What are two benefits of a 2-Tier design? (Choose two.)

- A. Layer 2 and Layer 3 protocols run close to the endpoints to better implement ACL and QoS policy at the edge.
- B. Improved performance by offloading processing from the Access layer to the Core.
- C. Use of layer 2 switches at the access layer can process and route traffic from attached APs.
- D. Support for WAN/MPLS, Internet, and Data Center directly on the Collapsed core.
- E. Provides a more cost effective solution given that no additional switches are required for a third tier.

Answer: AE

#### NEW QUESTION 8

What command will save your configuration on an Aruba AOS-CX switch so that your changes automatically load on next reboot?

- A. copy running-config checkpoint startup-config
- B. copy startup-config running-config
- C. copy running-config initial-checkpoint
- D. copy running-config default

Answer: A

#### NEW QUESTION 9

What is the binary conversion of the hexadecimal value 0x2001?

- A. 0010 0001

- B. 0002 0000 0000 0001
- C. 0011 0000 0000 0001
- D. 0010 0000 0000 0001

Answer: D

#### NEW QUESTION 10

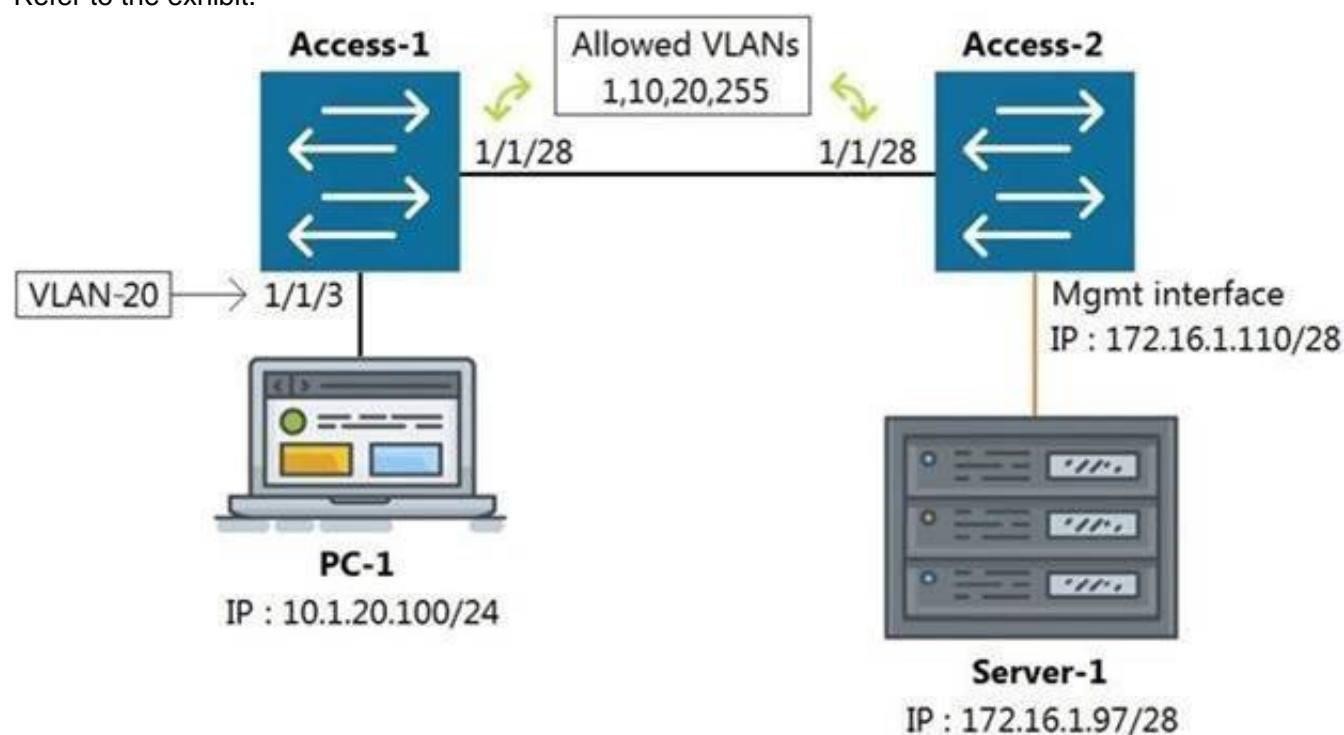
What command displays information regarding the secondary image installed on an AOS-CX switch?

- A. show secondary
- B. show version detail
- C. show version
- D. show images

Answer: D

#### NEW QUESTION 10

Refer to the exhibit.



All switches are running Aruba OS-CX. While working in the terminal of Access-2, you are unable to reach Server-1 using SSH. What is the correct command to ping Server-1 from Access-2 to test reachability?

- A. Access-2# ping6 172.16.1.97 vrf mgmt
- B. Access-2# ping 172.16.1.97
- C. Access-2# ping 172.16.1.97 vrf default
- D. Access-2# ping 172.16.1.97 vrf mgmt

Answer: D

#### NEW QUESTION 13

Which statement is correct regarding powering an Aruba Access Point?

- A. PoE or PoE+ is only used with Ethernet that is carried over multi-mode fiber cabling.
- B. Using switchports for this reason is unnecessary, because Aruba Access Points typically use an AC to DC power adapter to draw power.
- C. PoE or PoE+ enabled switchports are rarely used given concerns about causing electrical interference, with the data also carried over Ethernet cabling.
- D. Most administrators use PoE or PoE+ enabled switchports to provide both Ethernet connectivity and power to the AP.

Answer: D

#### NEW QUESTION 17

Refer to the exhibit.

T11-Access-2# show lldp configuration

#### LLDP Global Configuration

=====

```
LLDP Enabled           : Yes
LLDP Transmit Interval : 30
LLDP Hold Time Multiplier : 4
LLDP Transmit Delay Interval : 2
LLDP Reinit Time Interval : 2
```

#### TLVs Advertised

=====

Management Address

Port Description

Port VLAN-ID

System Capabilities

System Description

System Name

OUI

#### LLDP Port Configuration

=====

PORT	TX-ENABLED	RX-ENABLED
1/1/1	Yes	Yes
1/1/2	Yes	Yes
<--- output omitted --->		
1/1/27	Yes	Yes
1/1/28	Yes	Yes

What configuration is needed in order for "show LLDP configuration" to show this output?

- A. none; LLDP is enabled by default on Aruba switches
- B. configuring LLDP both globally and on the interfaces
- C. enabling LLDP on the interfaces only
- D. configuring LLDP globally only

**Answer:** A

#### NEW QUESTION 18

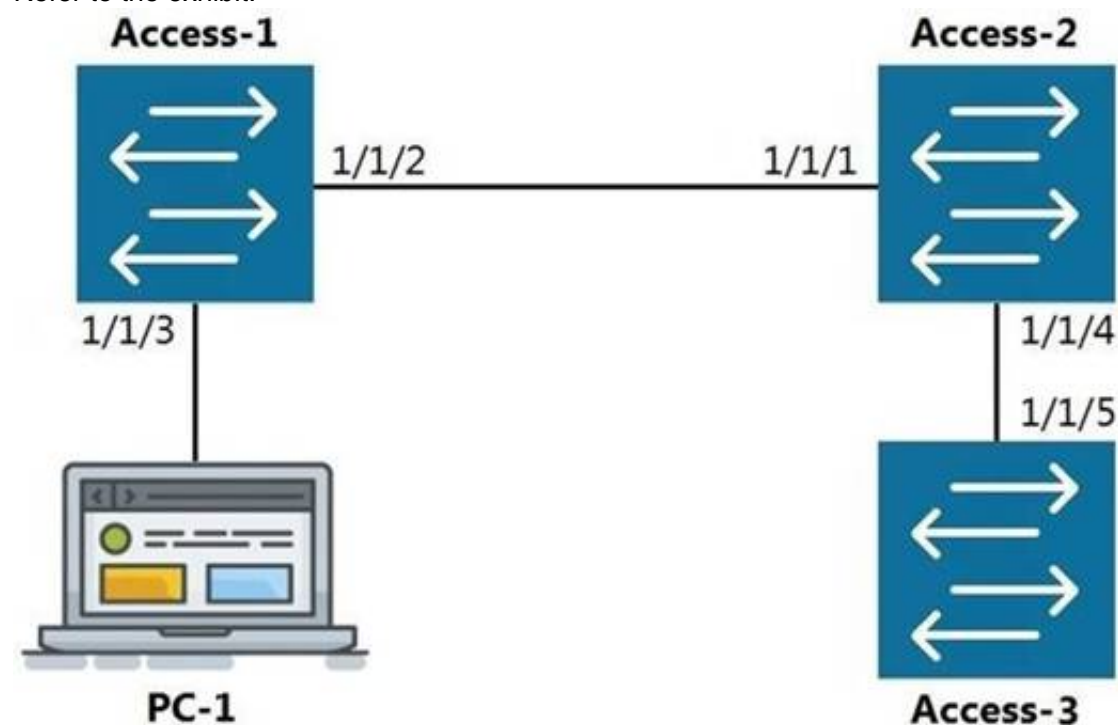
What are the benefits of a 3-Tier design over a 2- Tier? (Choose two.)

- A. Offloading processing from the Core without routing at the Access layer.
- B. Can use lower speed links between Core to Aggregation and Aggregation to Access given the use of an Aggregation layer.
- C. Lowering the cost of a deployment due to needing less switches overall.
- D. Better scalability in a campus with a large number of buildings.
- E. Gaining the flexibility to connect the Data-Center to any Access layer switch.

**Answer:** AD

#### NEW QUESTION 21

Refer to the exhibit.



LLDP

The command show LLDP neighbor-info gets typed into Access-1. All switches are Aruba OS-CX switches. What is the output of this command?



A.

LOCAL-PORT	CHASSIS-ID	PORT-ID	PORT-DESC	TTL	SYS-NAME
1/1/1	90:20:c2:bc:ed:00	1/1/2	1/1/2	120	Access-2
1/1/5	90:20:c2:bc:ef:00	1/1/2	1/1/2	120	Access-3

B.

LOCAL-PORT	CHASSIS-ID	PORT-ID	PORT-DESC	TTL	SYS-NAME
1/1/1	90:20:c2:bc:ed:00	1/1/2	1/1/2	120	Access-2

C.

LOCAL-PORT	CHASSIS-ID	PORT-ID	PORT-DESC	TTL	SYS-NAME
1/1/2	90:20:c2:bc:ed:00	1/1/1	1/1/1	120	Access-2
1/1/2	90:20:c2:bc:ef:00	1/1/5	1/1/5	120	Access-3

D.

LOCAL-PORT	CHASSIS-ID	PORT-ID	PORT-DESC	TTL	SYS-NAME
1/1/2	90:20:c2:bc:ed:00	1/1/1	1/1/1	120	Access-2

Answer: D

#### NEW QUESTION 24

What is the process where a compute device converts logical data bits into the correct physical representation depending on the media?

- A. Demodulation
- B. Modulation
- C. Propagation
- D. Encapsulation

Answer: D

#### NEW QUESTION 25

Which two port characteristics must match between LAG interfaces? (Choose two.)

- A. Port number
- B. Duplex
- C. Member ID
- D. Media type
- E. Chassis number

Answer: BD

#### NEW QUESTION 29

Interface 1/1/1 is up  
 Admin state is up  
 Link transitions: 1  
 Description: TO\_PC-1  
 Hardware: Ethernet, MAC Address: 00:11:22:33:44:55  
 MTU 1500  
 Type 1GbT Full-  
 duplex qos  
 trust none  
 Speed 1000 Mb/s  
 Auto-negotiation is on  
 Flow-control: off  
 Error-control: off  
 MDI mode: MDIX  
 VLAN Mode: access  
 Access VLAN: 1111  
 Which command will produce the above output?

- A. show interface vlan 1111
- B. show interface 1/1/1
- C. show interface gigabit 1/1/1
- D. show vlan 1111

Answer: B

### NEW QUESTION 31

What is an available command on an Aruba AOS-CX switch that would back up the secondary image to a secure remote repository?

- A. backup secondary sftp://admin@10.1.1.21/GL.10.04.0003.swi
- B. copy secondary sftp://admin@10.1.1.21/GL.10.04.0003.swi
- C. copy sftp://admin@10.1.1.21/GL.10.04.0003.swi secondary
- D. copy secondary tftp://admin@10.1.1.21/GL.10.04.0003.swi

Answer: B

### NEW QUESTION 36

Refer to the exhibit.

watchlog/3	0	0	0
dbus-daemon	0	0	15
intfd	0	0	11
ext4-rsv-conver	0	0	0
scsi_eh_6	0	0	0
cpuhp/3	0	0	0
kworker/4:0	0	0	0
scsi_tmf_4	0	0	0
kworker/5:1H	0	0	0
smartd	0	0	3
fault-handler	0	0	10
btd	0	0	12
portd	0	0	12
migration/4	0	0	0
scsi_tmf_1	0	0	0
kworker/2:0H	0	0	0
kauditd	0	0	0
rmond	0	0	9
certmgr	0	0	13
icmp6_unreachab	0	0	0
Core-1#			

The above output is the result of issuing the command show system resource-utilization. What command should be used to enable terminal output line by line or page by page?

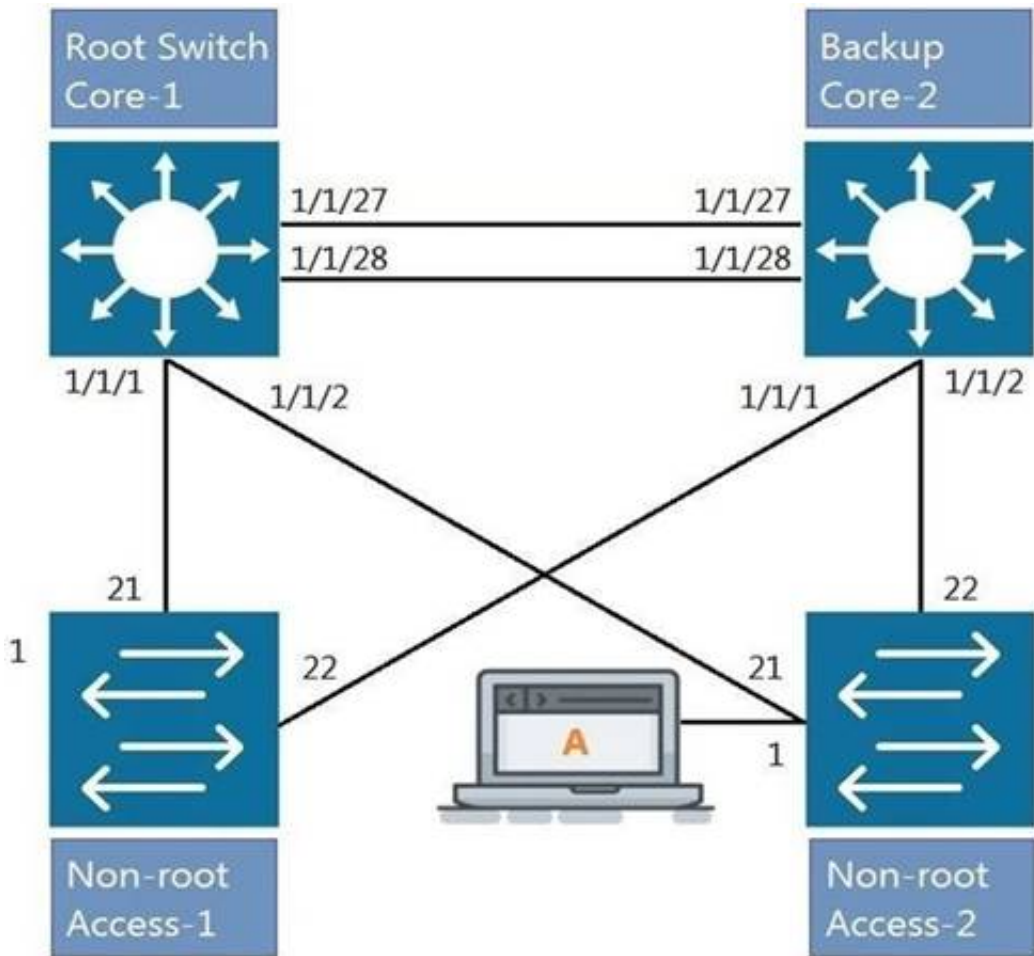
- A. The command page
- B. The command terminal length 30
- C. The command more
- D. The command less

Answer: A

### NEW QUESTION 40

Refer to the exhibit.





All four switches in the diagram have been configured with the region name "Aruba1".  
What two other MSTP configurations must match for switches within the same MST region? (Choose two.)

- A. MST region type
- B. MST Bridge ID
- C. MST version number
- D. MST revision number
- E. MST VLAN to instance mapping

Answer: DE

NEW QUESTION 42

Which port or ports should be allowed through a firewall so that an AOS-CX switch can act as an SNMP Agent?

- A. UDP 1812 and UDP 1813
- B. UDP 161
- C. TCP 443
- D. UDP 162

Answer: B

NEW QUESTION 47

DRAG DROP

Match the terms to the correct layer of the OSI model.  
Select and Place:

Layer		Term
Transport Layer		Frames
Network Layer		Packets
Physical Layer		RF Signals
Data Link Layer		Segments

- A. Mastered
- B. Not Mastered

Answer: A

Explanation:

Layer	Term
Transport Layer	Frames
Network Layer	Packets
Physical Layer	RF Signals
Data Link Layer	Segments

#### NEW QUESTION 49

What are two methods for remotely managing an Aruba AOS-CX switch? (Choose two.)

- A. SNMPv2c
- B. HTTPS
- C. USB-C console
- D. Telnet
- E. SSHCorrect

**Answer:** BE

#### NEW QUESTION 53

Refer to the exhibit.

```
SW1# show vlan
```

VLAN	Name	Status	Reason	Type	Interfaces
1	DEFAULT_VLAN_1	up	ok	default	<output omitted>
10	Engineering	up	ok	static	1/1/1-1/1/7
20	Guest	up	ok	static	1/1/11-1/1/14

The above command was applied to an Aruba AOS-CX 6300M 24-port switch with 4-port SFP56 uplinks. All ports are set as access switchports. Which ports carry VLAN 1 traffic?

- A. 1/1/8, 1/1/10, 1/1/5-1/1/24
- B. 1/1/1-1/1/28
- C. 1/1/1-1/1/24
- D. 1/1/8-1/1/10, 1/1/5-1/1/28

**Answer:** D

#### NEW QUESTION 58

```
Core(config)# user admin password
Core(config)# interface mgmt
Core(config-if-mgmt)# ip static 10.254.16.89/22
Core(config-if-mgmt)# default-gateway 10.254.19.129
Core(config)# ssh server vrf mgmt
Core(config)# https-server vrf mgmt
```

You are tasked with configuring the Core switch to be managed by NetEdit. Currently, the Core switch is at factory-default settings. Which two steps are missing? (Choose two.)

- A. Core(config)# https-server rest access-mode read-write
- B. Core(config-if-mgmt)# no shutdown
- C. Core(config-if-mgmt)# no tftp-server
- D. Core(config-if-mgmt)# enable
- E. Core(config)# https-server rest access-mode read-only

**Answer:** AB

#### NEW QUESTION 62

Which two commands will save the running-config so that changes will be loaded automatically on the next reboot? (Choose two.)

- A. write memory
- B. save
- C. copy config config1 config startup-config
- D. copy running-config startup-config
- E. copy running-config checkpoint boot-config

**Answer:** AD

#### NEW QUESTION 66

DRAG DROP

Match the available stacking feature to the correct AOS-CX switch model. Stacking features may be used more than once.  
Select and Place:

Stacking Feature

VSF

VSX

Answer Area

Stacking Feature	AOS-CX Switch Model
	6300M
	6300F
	8320
	8400
	6400

- A. Mastered  
B. Not Mastered

Answer: A

Explanation:

Stacking Feature

VSF

VSX

Answer Area

Stacking Feature	AOS-CX Switch Model
VSF	6300M
VSF	6300F
VSX	8320
VSX	8400
VSX	6400

NEW QUESTION 69

Which two options are correct regarding the IEEE 802.11ax standard? (Choose two.)

- A. allows transmissions of up to 4.8Gbps  
B. is an emerging satellite connection standard to allow wireless access anywhere in the world  
C. operates only in the 5GHz similar to 802.11ac  
D. operates in both the 2.4GHz and 5GHz radios bands  
E. is the first WLAN standard to no longer use electromagnetic signals to transmit data

Answer: AD

NEW QUESTION 74

.....



## THANKS FOR TRYING THE DEMO OF OUR PRODUCT

Visit Our Site to Purchase the Full Set of Actual HPE6-A72 Exam Questions With Answers.

We Also Provide Practice Exam Software That Simulates Real Exam Environment And Has Many Self-Assessment Features. Order the HPE6-A72 Product From:

<https://www.2passeasy.com/dumps/HPE6-A72/>

## Money Back Guarantee

### HPE6-A72 Practice Exam Features:

- \* HPE6-A72 Questions and Answers Updated Frequently
- \* HPE6-A72 Practice Questions Verified by Expert Senior Certified Staff
- \* HPE6-A72 Most Realistic Questions that Guarantee you a Pass on Your FirstTry
- \* HPE6-A72 Practice Test Questions in Multiple Choice Formats and Updatesfor 1 Year