

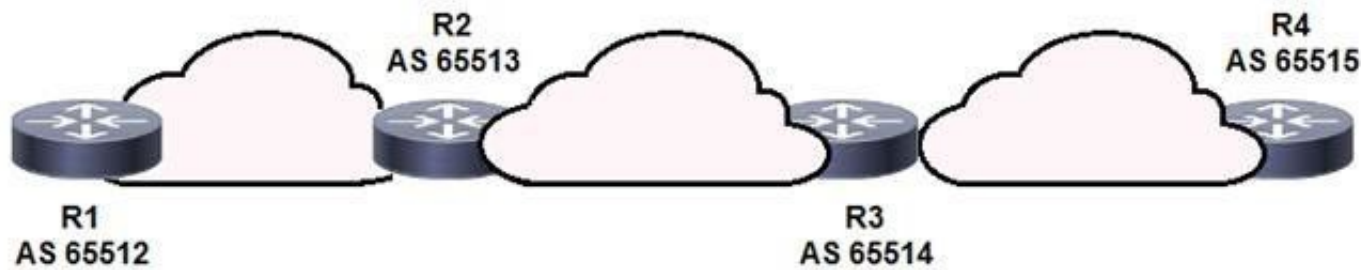
Cisco

Exam Questions 350-501

Implementing and Operating Cisco Service Provider Network Core Technologies



NEW QUESTION 1



Refer to the exhibit. BGPsec is implemented on R1, R2, R3, and R4. BGP peering is established between neighboring autonomous systems. Which statement about implementation is true?

- A. BGP updates from the iBGP peers are appended with a community of local-as.
- B. BGP updates from the all BGP peers are appended with a community of no-export.
- C. BGP updates from the eBGP peers are appended with an additional AS path value that is statically set by the domain administrator.
- D. BGP updates from the eBGP peers are appended with a BGPsec attribute sequence that includes a public key hash and digital signature.

Answer: D

NEW QUESTION 2

Which configuration mode do you use to apply the mpls ldp graceful-restart command in IOS XE Software?

- A. MPLS LDP neighbor
- B. interface
- C. MPLS
- D. global

Answer: D

NEW QUESTION 3

```
ip cef
interface gigabitethernet0/1
ip verify unicast source reachable-via any
```

Refer to the exhibit. Router 1 was experiencing a DDoS attack that was traced to interface gigabitethernet0/1. Which statement about this configuration is true?

- A. Router 1 accepts all traffic that ingresses and egresses interface gigabitethernet0/1.
- B. Router 1 drops all traffic that ingresses interface gigabitethernet0/1 that has a FIB entry that exits a different interface.
- C. Router 1 accepts source addresses that have a match in the FIB that indicates it is reachable through a real interface.
- D. Router 1 accepts source addresses on interface gigabitethernet0/1 that are private addresses.

Answer: C

NEW QUESTION 4

Which statement describes the advantage of a Multi-Layer control plane?

- A. It provides multivendor configuration capabilities for Layer 3 to Layer 1.
- B. It automatically provisions, monitors, and manages traffic across Layer 0 to Layer 3.
- C. It supports dynamic wavelength restoration in Layer 0.
- D. It minimizes human error configuring converged networks.

Answer: A

NEW QUESTION 5

```
PE-A#show ip bgp vpnv4 vrf Customer-A neighbors 10.10.10.2 routes
BGP table version is 13148019, local router ID is 10.10.10.10
Status codes: s suppressed, d damped, h history, * valid, > best, i - internal,
               r RIB-failure, S Stale, m multipath, b backup-path, f RT-Filter,
               x best-external, a additional-path, c RIB-compressed,
Origin codes: i - IGP, e - EGP, ? - incomplete
RPKI validation codes: V valid, I invalid, N Not found

   Network          Next Hop          Metric LocPrf Weight Path
Route Distinguisher: 65000:1111 (default for vrf Customer-A)
*>   192.168.0/19    10.10.10.2         0           0 4282 65001 ?
*>   192.168.0/17    10.10.10.2         0           0 4282 65001 ?
*>   192.168.0/16    10.10.10.2         0           0 4282 65001 ?

Total number of prefixes 5

PE-A#config t
Enter configuration commands, one per line. End with CNTL/Z.
PE-A(config)#ip prefix-list ALLOW permit 192.168.0.0/16 ge 17 le 19
PE-A(config)#router bgp 65000
PE-A(config-router)#address-family ipv4 vrf Customer-A
PE-A(config-router-af)#neighbor 10.10.10.2 prefix-list ALLOW in
```

Refer to the exhibit. Which three outcomes occur if the prefix list is added to the neighbor? (Choose three.)

- A. 192.168.0.0/16 is denied.
- B. 192.168.0.0/16 is permitted.
- C. 192.168.0.0/19 is permitted
- D. 192.168.0.0/19 is denied.
- E. 192.168.0.0/17 is permitted
- F. 192.168.0.0/17 is denied.

Answer: ACF

NEW QUESTION 6

A network engineer must enable the helper router to terminate the OSPF graceful restart process if it detects any changes in the LSA. Which command enables this feature?

- A. nsf ietf helper disable
- B. nsf cisco helper disable
- C. nsf ietf helper strict-lsa-checking
- D. nsf cisco enforce global

Answer: A

NEW QUESTION 7

```
R1
router bgp 65000
router-id 192.168.1.1
neighbor 192.168.1.2 remote-as 65012
neighbor 192.168.1.2 local-as 65112
```

Refer to the exhibit. A network engineer is implementing a BGP protocol. Which effect of the local-as keyword in this configuration is true?

- A. It enables peer 192.168.1.2 to establish a BGP relationship with R1 using AS 65012 without additional configuration.
- B. It enables peer 192.168.1.2 to establish a BGP relationship with R1 using AS 65112 and the VPNv4 address family.
- C. It enables peer 192.168.1.2 to establish a BGP relationship with R1 using AS 65012 and the VPNv4 address family.
- D. It enables peer 192.168.1.2 to establish a BGP relationship with R1 using AS 65112 without additional configuration.

Answer: D

NEW QUESTION 8

```
RP/0/0/CPU0:router# show bgp neighbors 192.168.2.2

BGP neighbor is 192.168.2.2, remote AS 1, local AS 140, external link
Remote router ID 0.0.0.0
  BGP state = Idle
    Last read 00:00:00, hold time is 180, keepalive interval is 60 seconds
    Received 0 messages, 0 notifications, 0 in queue
    Sent 0 messages, 0 notifications, 0 in queue
    Minimum time between advertisement runs is 15 seconds

For Address Family: IPv4 Unicast
  BGP neighbor version 0
  Update group: 0.1
  eBGP neighbor with inbound or outbound policy; defaults to 'drop'
  Route refresh request: received 0, sent 0
  0 accepted prefixes
  Prefix advertised 0, suppressed 0, withdrawn 0, maximum limit 524288
  Threshold for warning message 75%

Connections established 0; dropped 0
Last reset 00:02:03, due to BGP neighbor initialized
External BGP neighbor not directly connected.
```

Refer to the exhibit. Based on the show command output, which result is true after BGP session is established?

- A. The IOS XR router advertises and accepts all routes to and from eBGP neighbor 192.168.2.2.
- B. The IOS XR router advertises all routes to the neighbor 192.168.2.2, but it does not accept any routes from 192.168.2.2.
- C. No routes are accepted from the neighbor 192.168.2.2, nor are any routes advertised to it.
- D. The IOS XR router does not advertise any routes to the neighbor 192.168.2.2, but it accepts any routes from 192.168.2.2.

Answer: C

NEW QUESTION 9

```
R1
router ospf 1
  area 2 stub no-summary

R2
router ospf 1
  area 3 nssa
```

Refer to the exhibit. In which way does router R1 operate differently than router R2?

- A. R1 sends LSA types 5 and 7, while R2 sends type 1, 2, and 7 LSAs.
- B. R1 sends LSA type 2 only, while R2 sends type 1 and type 7 LSAs.
- C. R1 sends LSA type 2 only and R2 sends LSA type 1 only.
- D. R1 sends LSA types 1 and 2, while R2 sends type 1, 2, and 7 LSAs.

Answer: D

NEW QUESTION 10

Which task must be performed first to implement BFD in an IS-IS environment?

- A. Configure BFD in an interface configuration mode.
- B. Disable Cisco Express Forwarding on all interfaces running routing protocols other than IS-IS.
- C. Configure all IS-IS routers as Level 2 devices.
- D. Configure BFD under the IS-IS process.

Answer: D

NEW QUESTION 10

Which two IS-IS parameters must match before two Level 2 peers can form an adjacency? (Choose two.)

- A. hello timer setting
- B. authentication settings
- C. area ID
- D. system ID
- E. MTU

Answer: BE

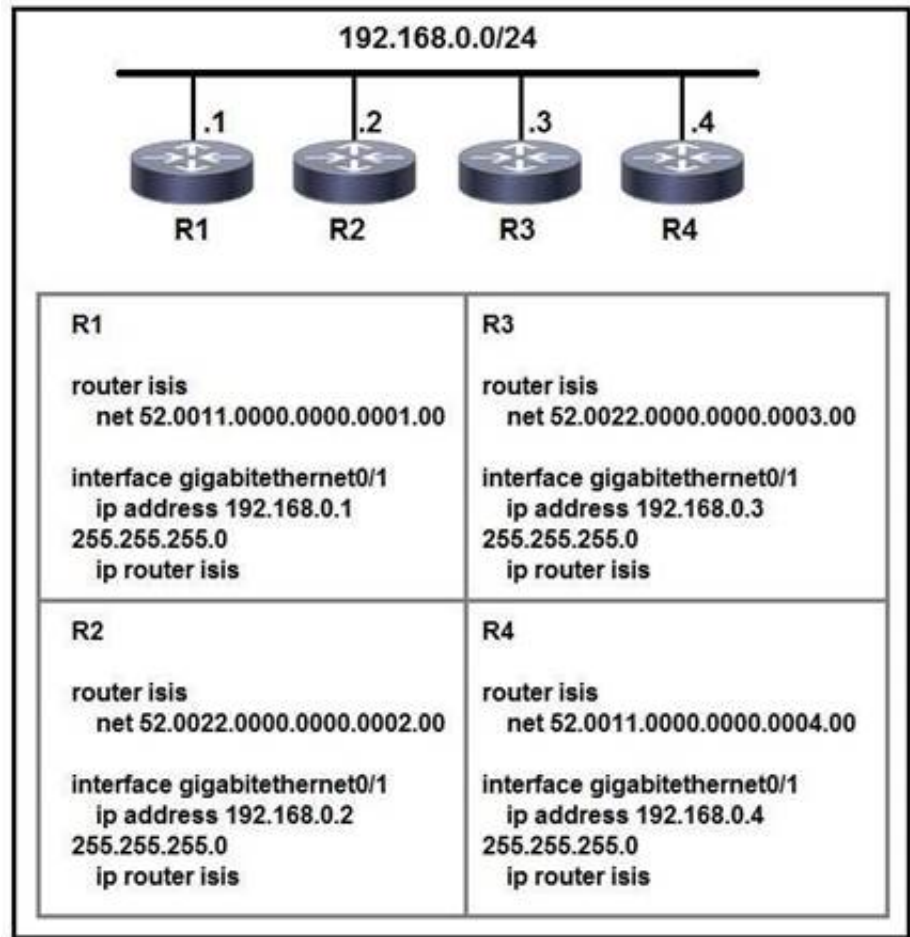
NEW QUESTION 11

A customer of an ISP requests support to setup a BGP routing policy. Which BGP attribute should be configured to choose specific BGP speakers as preferred points for the customer AS?

- A. lowest multi-exit discriminator
- B. highest local preference outbound
- C. lowest local preference inbound
- D. highest local preference inbound

Answer: B

NEW QUESTION 14



Refer to the exhibit. Which two statements about the IS-IS topology are true? (Choose two.)

- A. R1 and R4 are Level 2 neighbors.
- B. All four routers are operating as Level 1-2 routers.
- C. All four routers are operating as Level 2 routers only.
- D. All four routers are operating as Level 1 routers only.
- E. R1 and R2 are Level 2 neighbors.

Answer: AB

NEW QUESTION 16

Which BGP attribute is used first when determining the best path?

- A. origin
- B. AS path
- C. local preference
- D. weight

Answer: D

NEW QUESTION 20

```
PE-A#config t
PE-A(config)#interface FastEthernet0/0
PE-A(config-if)#ip ospf message-digest-key 1 md5 44578611
PE-A(config-if)#ip ospf authentication message-digest

PE-B#config t
PE-B(config)#interface FastEthernet0/0
```

Refer to the exhibit. An engineer wants to authenticate the OSPF neighbor between PE-A and PE-B using MD5. Which command on PE-B successfully completes the configuration?

- A. PE-B(config-if)#ip ospf message-digest-key 1 md5 44578611 PE-B(config- if)#ip ospf authentication null
- B. PE-B(config-if)#ip ospf message-digest-key 1 md5 44578611 PE-B(config-if)#ip ospf authentication key-chain 44578611
- C. PE-B(config-if)#ip ospf message-digest-key 1 md5 44568611 PE-B(config- if)#ip ospf authentication null
- D. PE-B(config-if)#ip ospf message-digest-key 1 md5 44578611 PE-B(config- if)#ip ospf authentication message-digest

Answer: D

NEW QUESTION 25

DRAG DROP

Drag and drop each NAT64 description from the left onto the correct NAT64 type on the right.
 Select and Place:

Answer Area

- It is limited on the number of endpoints.
- It uses address overloading.
- It conserves IPv4 addresses.
- It mandates IPv4-translatable IPv6 address allocation.
- It has 1:N translation.

Stateful

Stateless

- A. Mastered
B. Not Mastered

Answer: A

Explanation:

Answer Area

- It is limited on the number of endpoints.
- It uses address overloading.
- It conserves IPv4 addresses.
- It mandates IPv4-translatable IPv6 address allocation.
- It has 1:N translation.

Stateful

It has 1:N translation.

It conserves IPv4 addresses.

It uses address overloading.

Stateless

It is limited on the number of endpoints.

It mandates IPv4-translatable IPv6 address allocation.

NEW QUESTION 28

```
interface gigabitethernet1/0/1
switchport mode access
switchport access vlan 5
channel-group 1 mode desirable
```

Refer to the exhibit. An engineer is preparing to implement link aggregation configuration. Which statement about this configuration is true?

- A. The switch port negotiates an EtherChannel if it receives LACP packets from a connected peer running passive mode.
B. The switch port actively sends packets to negotiate an EtherChannel using PAgP.
C. The switch port passively negotiates an EtherChannel if it receives PAgP packets from a connected peer.
D. The switch port accepts LACP and PAgP packets from a connected peer and negotiate an EtherChannel using the common EtherChannel mode.

Answer: B

NEW QUESTION 29

Which regular expression query modifier function indicates the start of a string?

- A. +
B. ^
C. \$
D. [^]

Answer: B

NEW QUESTION 33

```
R1
ip cef distributed
mpls ldp graceful-restart
interface GigabitEthernet 0/0/1
 mpls ip
 mpls label protocol ldp
```

Refer to the exhibit Which effect of this configuration is true?

- A. R1 can support a peer that is configured for LDP SSO/NSF as the peer recovers from an outage.
- B. R1 can support a graceful restart operation on the peer, even if graceful restart is disabled on the peer.
- C. R1 can failover to any peer.
- D. R1 can failover only to a peer that is configured for LDP SSO/NSF.

Answer: A

NEW QUESTION 38

You are testing the capabilities of MPLS OAM ping. Which statement is true?

- A. An LSP is not required for the reply to reach the ingress MPLS router.
- B. An LSP breakage results in the ingress MPLS router never receiving any reply.
- C. MPLS OAM ping works solely with P2P LSPs.
- D. MPLS OAM ping works solely with Cisco MPLS TE.

Answer: B

NEW QUESTION 40

In an MPLS network, which protocol can be used to distribute a Segment Prefix?

- A. LDP
- B. EIGRP
- C. OSPF
- D. RSVP-TE

Answer: C

NEW QUESTION 44

```
RP/0/0/CPU0:iosxrv-1#show mpls ldp discovery brief
Sat Apr 2 22:43:11.362 UTC

Local LDP Identifier: 192.168.0.2:0
```

Discovery Source Session	VRF Name	Peer LDP Id	Holdtime	
Gi0/0/1	default	192.168.0.3:0	15	Y
Gi0/0/2	default	192.168.0.4:0	15	Y
Gi0/0/3	default	192.168.0.5:0	15	Y
Tgt:192.168.0.1	default	192.168.0.1:0	90	Y
Tgt:192.168.0.3	default	192.168.0.3:0	90	Y
Tgt:192.168.0.5	default	-	-	N

Refer to the exhibit. With which router does IOSXRV-1 have LDP session protection capability enabled but session hold up is not active?

- A. 192.168.0.4
- B. 192.168.0.5
- C. 192.168.0.1
- D. 192.168.0.3

Answer: B

NEW QUESTION 49

```
mpls label protocol ldp
mpls ldp router-id loopback 0
mpls ip
ip cef
```

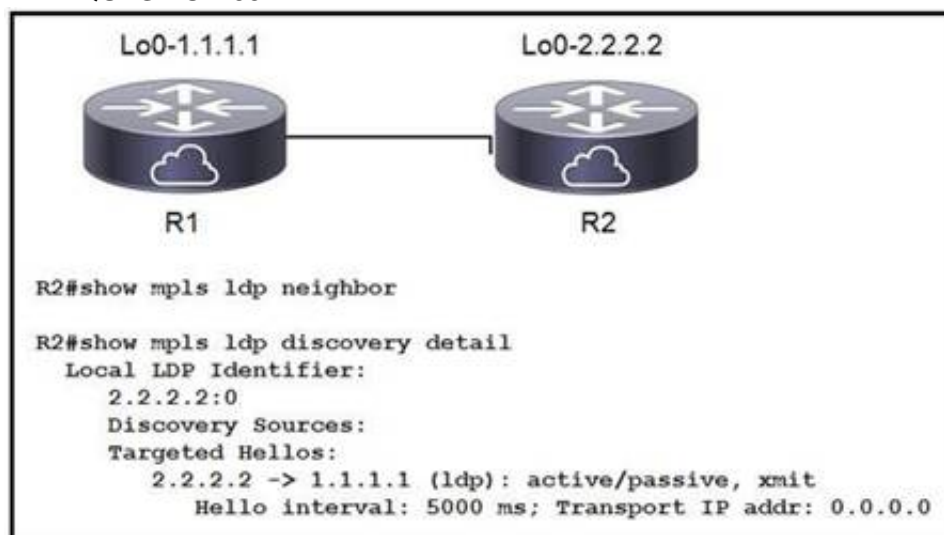
Refer to the exhibit. A network operator working for service provider with an employee id: 1234:56:789 applied this configuration to a router. Which additional step should the engineer use to enable LDP?

- A. Enable MPLS LDP on the interface.

- B. Disable Cisco Express Forwarding globally.
- C. Delete the static router ID.
- D. Configure the both keyword to enable LDP globally.

Answer: A

NEW QUESTION 53



Refer to the exhibit. When implementing an LDP protocol, an engineer experienced an issue between two directly connected routers and noticed that no LDP neighbor exists for 1.1.1.1. Which factor should be the reason for this situation?

- A. LDP needs to be enabled on the R2 loopback interface.
- B. LDP needs to be enabled on the R2 physical interface.
- C. R2 does not see any hellos from R1.
- D. R2 sees the wrong type of hellos from R1.

Answer: B

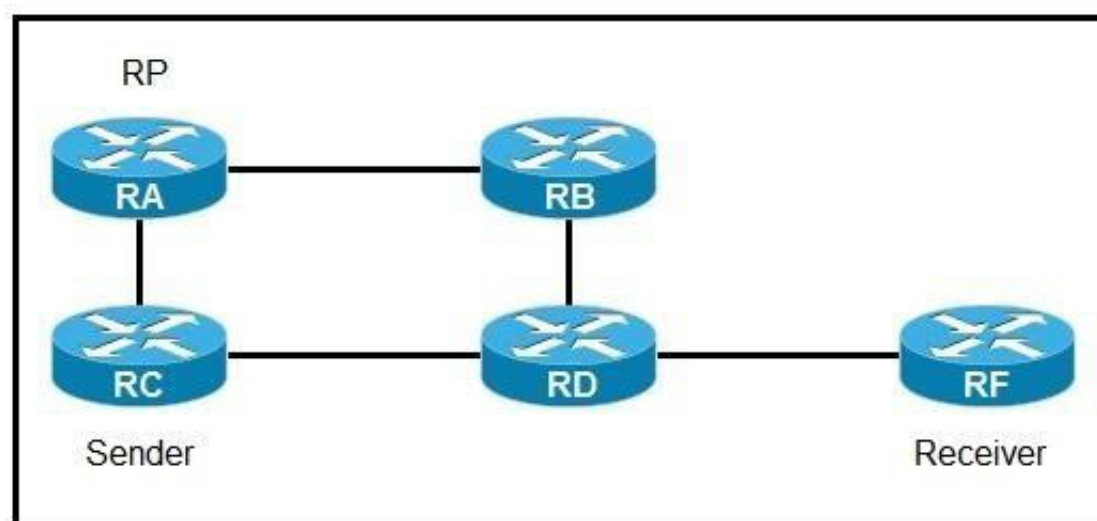
NEW QUESTION 55

Which statement about segment routing prefix segments is true?

- A. It is the longest path to a node.
- B. It is linked to an adjacency SID that is globally unique within the router.
- C. It is linked to a prefix SID that is globally unique within segment routing domain.
- D. It requires using EIGRP to operate.

Answer: C

NEW QUESTION 59



Refer to the exhibit. If router A is the RP, which PIM mode can you configure so that devices will send multicast traffic toward the RP?

- A. PIM-SM
- B. BIDIR-PIM
- C. PIM-SSM
- D. PIM-DM

Answer: A

NEW QUESTION 60

Why do packet loops occur during the configuration of BIDIR-PIM?

- A. The network does not support BIDIR-PIM.
- B. The network is partially upgraded to support BIDIR-PIM.
- C. The router has not been configured to advertise itself.
- D. No interface for carrying traffic for multicast groups has been configured.

Answer: B

NEW QUESTION 65

Refer to the exhibit. You are configuring an administrative domain in the given multi-vendor environment with PIM-SM. Which feature can you implement so that devices can dynamically learn the RP?

- A. BSR
- B. BIDIP-PIM
- C. Auto-RP
- D. SSM

Answer: C

NEW QUESTION 68

Refer to the exhibit. Which command is used to complete this configuration for QoS class-based marking?

- A. PE-A(config-pmap-c)#set dscp ef
- B. PE-A(config-pmap-c)#priority
- C. PE-A(config-pmap-c)#random-detect
- D. PE-A(config-pmap-c)#fair-queue

Answer: A

NEW QUESTION 69

Refer to the exhibit. This configuration is being applied on an IOS XR router. Which statement about this configuration is true?

- A. It is used to enable gRPC.
- B. It is used to create a streaming subscription with a 600-second interval.
- C. It is used to set up configuration to poll network data.
- D. It is used to create a streaming subscription with a 60-Second interval.

Answer: D

NEW QUESTION 73

Which two uses of the YANG data modeling language are true? (Choose two.)

- A. It can be used to model the configuration used by NETCONF operations.
- B. It can be used to access a device by HTTP.
- C. It can be used to replace the OSI model for troubleshooting.
- D. It can be used to shape state data of network elements.
- E. It can be used to replace RESTCONF as a mechanism to install and manipulate configuration.

Answer: AC

NEW QUESTION 78

What do Ansible and SaltStack have in common?

- A. They both have agents running on the client machine.
- B. They both can be designed with more than one master server.
- C. They both use DSL configuration language.
- D. They both use YAML configuration language.

Answer: D

NEW QUESTION 79

Which statement about Network Services Orchestrator (NSO) is true?

- A. It must use SDN as an overlay for addressing.
- B. It uses YANG modeling language to automate devices.
- C. It is used only in service provider environments.
- D. It can be used only with XML coding.

Answer: B

NEW QUESTION 80

.....

Thank You for Trying Our Product

We offer two products:

1st - We have Practice Tests Software with Actual Exam Questions

2nd - Questions and Answers in PDF Format

350-501 Practice Exam Features:

- * 350-501 Questions and Answers Updated Frequently
- * 350-501 Practice Questions Verified by Expert Senior Certified Staff
- * 350-501 Most Realistic Questions that Guarantee you a Pass on Your First Try
- * 350-501 Practice Test Questions in Multiple Choice Formats and Updates for 1 Year

100% Actual & Verified — Instant Download, Please Click
[Order The 350-501 Practice Test Here](#)