

Microsoft

Exam Questions PL-500

Microsoft Power Automate RPA Developer



NEW QUESTION 1

- (Exam Topic 1)

You need to resolve the fulfillment status flow issue.

Which three actions should you perform? Each correct answer presents part of the solution. NOTE: Each correct selection is worth one point.

- A. Ensure that the flow instance does not remain in the queue for more than three hours.
- B. Ensure that the flow is not using elevated privileges.
- C. Ensure that all users are signed out from the target machine.
- D. Use different local Windows accounts for all machines.
- E. Trigger the flow by using an on-premises data gateway.

Answer: BDE

NEW QUESTION 2

- (Exam Topic 1)

You need to implement security to resolve the invoice data issue

Which three actions should you perform? Each correct answer presents part of the solution. NOTE: Each correct selection is worth one point.

- A. Select the Finance role, select Core Records, and then navigate to the table.
- B. Clear the Create and Delete permission
- C. Set the Read permission and Write permission values to Business unit D
- D. In Microsoft Power Platform admin center, navigate to the Security roles section.
- E. In Microsoft Power Platform admin center, navigate to the Users section.
- F. Select the Finance role, select Custom Entities and navigate to the table.
- G. Clear the Create and Delete permission
- H. Set the Read permission and Write permission values to Organization.

Answer: ACF

NEW QUESTION 3

- (Exam Topic 1)

You need to configure the flow for processing invoices that arrive in the AP mailbox. Which three elements should you use? Each correct answer presents part of the solution. NOTE: Each correct selection is worth one point.

- A. Document type
- B. Location
- C. Pages
- D. AI model
- E. Form type
- F. Form

Answer: BCE

NEW QUESTION 4

- (Exam Topic 1)

You need to identify the cause for the SMSApp data entry issue. What is the root cause?

- A. The DLP policy that contains the desktop flow connector was deleted.
- B. The default policy group is set to Blocked.
- C. The desktop flow was not shared with the finance clerk.
- D. The scope of the DLP policy was changed to exclude the development environment
- E. The Power Automate Management connector is assigned to the Business category.

Answer: C

NEW QUESTION 5

- (Exam Topic 2)

You need to identify the actions that PipelineManager1 can perform.

Which three actions can PipelineManager1 perform? Each correct answer presents a complete solution. NOTE: Each correct selection is worth one point.

- A. Override the DLP policy.
- B. Modify or delete a flow.
- C. Modify the owner's connection credentials.
- D. View the run history.
- E. Set the cloud flow priority.
- F. Add or remove other owners.

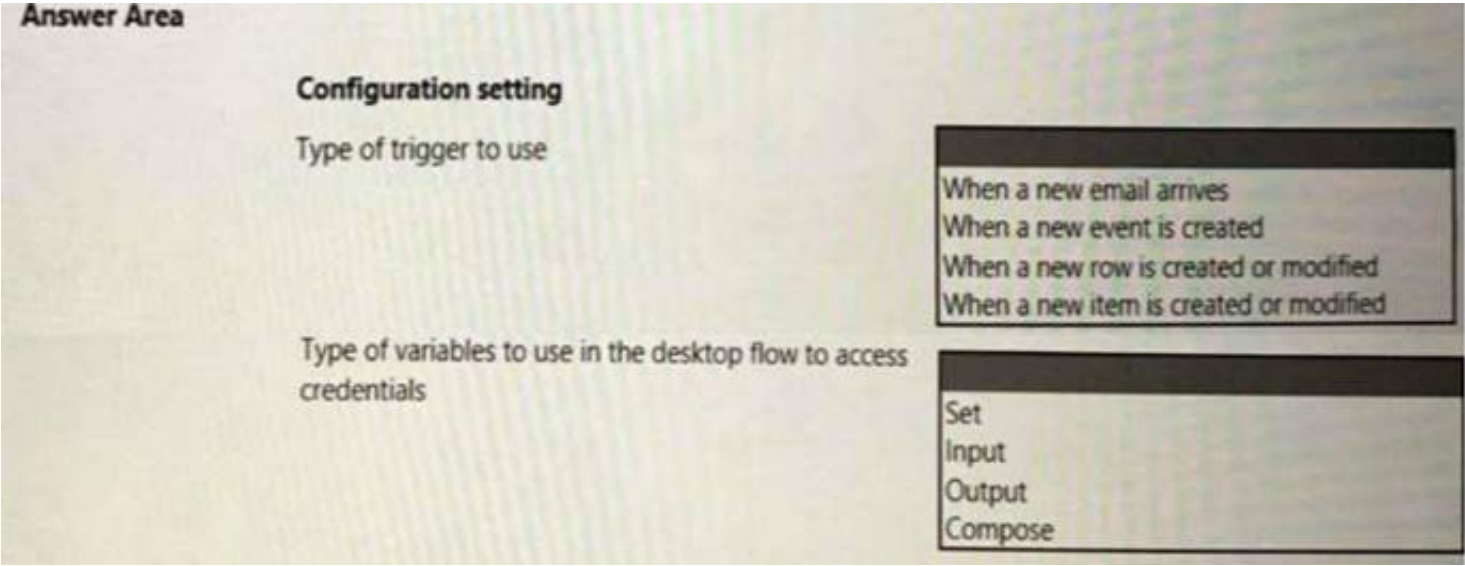
Answer: CDF

NEW QUESTION 6

- (Exam Topic 2)

You need to configure the solution for the ERPDataOperations flow.

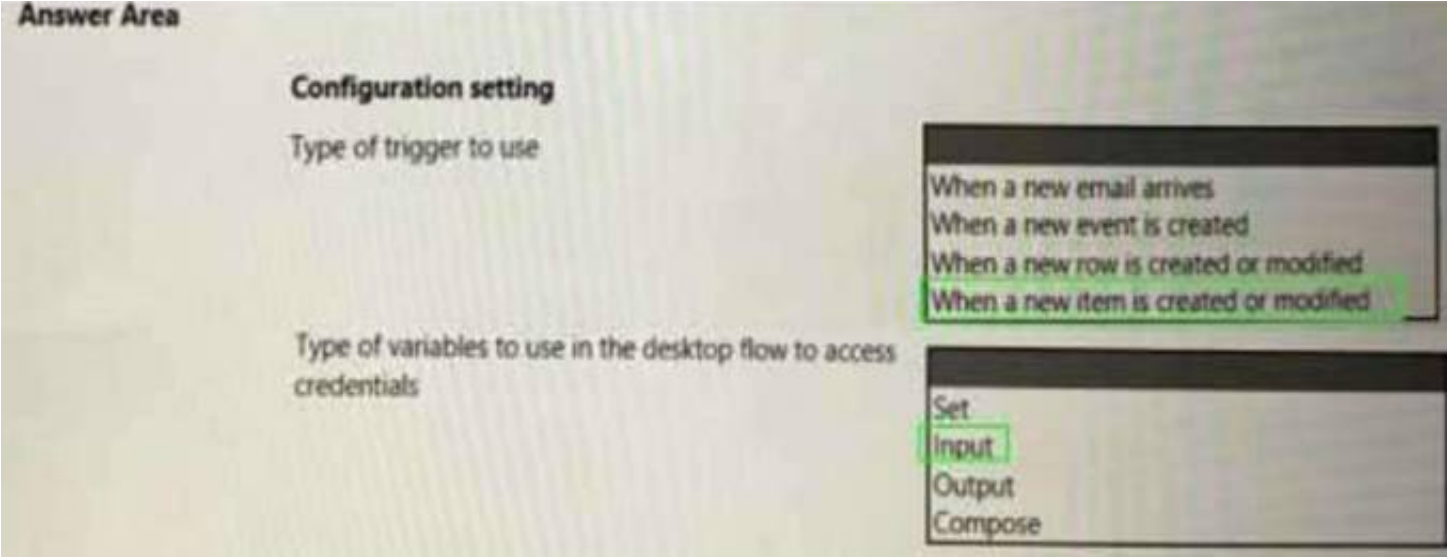
Which configuration values should you use? To answer, select the appropriate options in the answer area, NOTE: Each correct selection is worth one point.



- A. Mastered
- B. Not Mastered

Answer: A

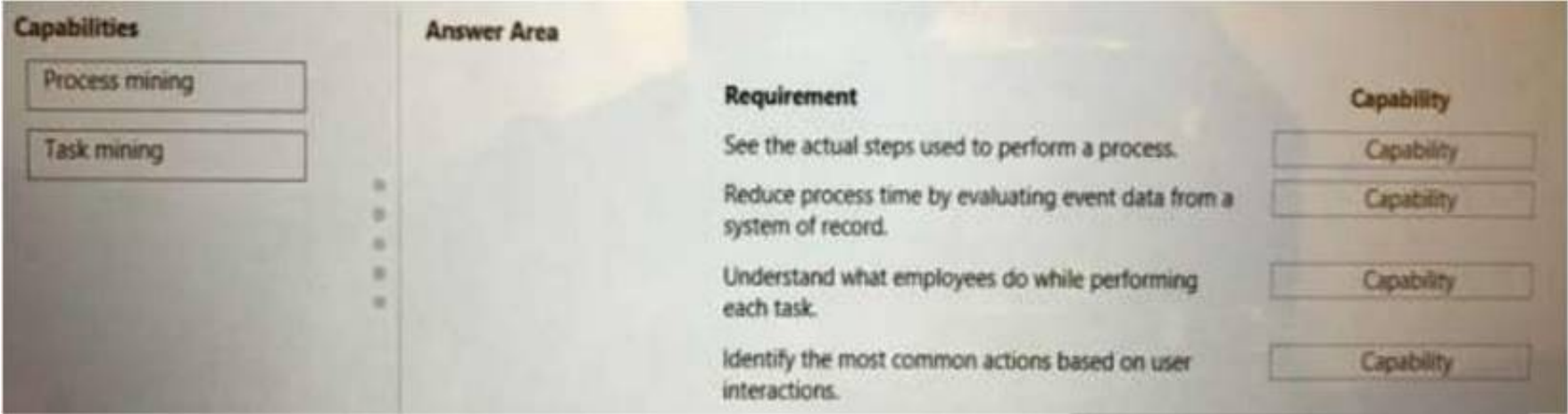
Explanation:



NEW QUESTION 7

- (Exam Topic 3)

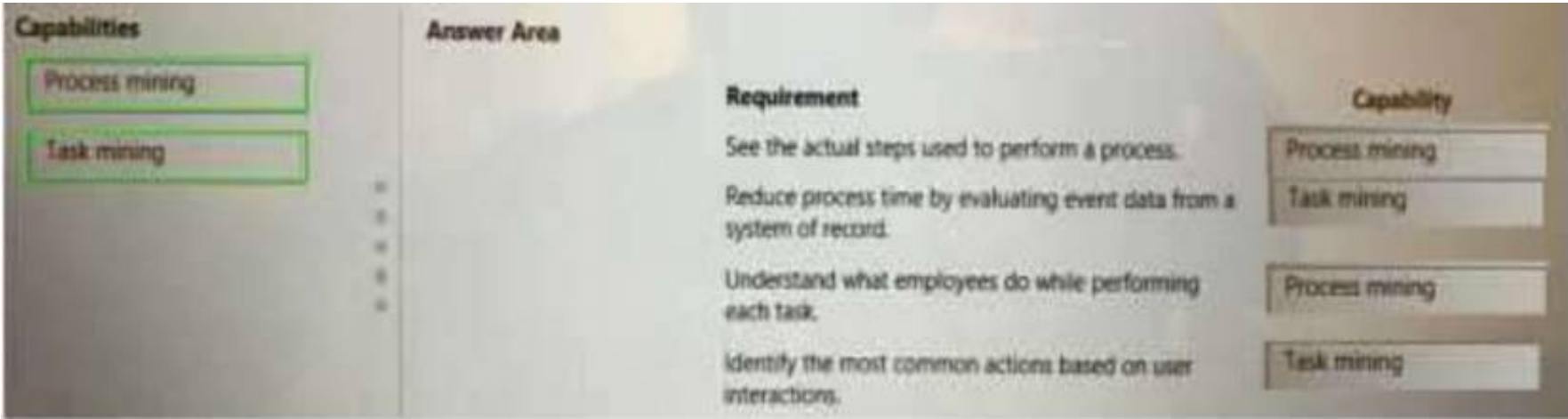
A user is evaluating the capabilities of both process mining and task mining. You need to determine when you should use process mining or task mining. Which Process advisor capability should you use? To answer, drag the appropriate capabilities to the correct requirements. Each capability may be used once, more than once, or not at all. You may need to drag the split bar between panes or scroll to view content.
NOTE: Each correct selection is worth one point.



- A. Mastered
- B. Not Mastered

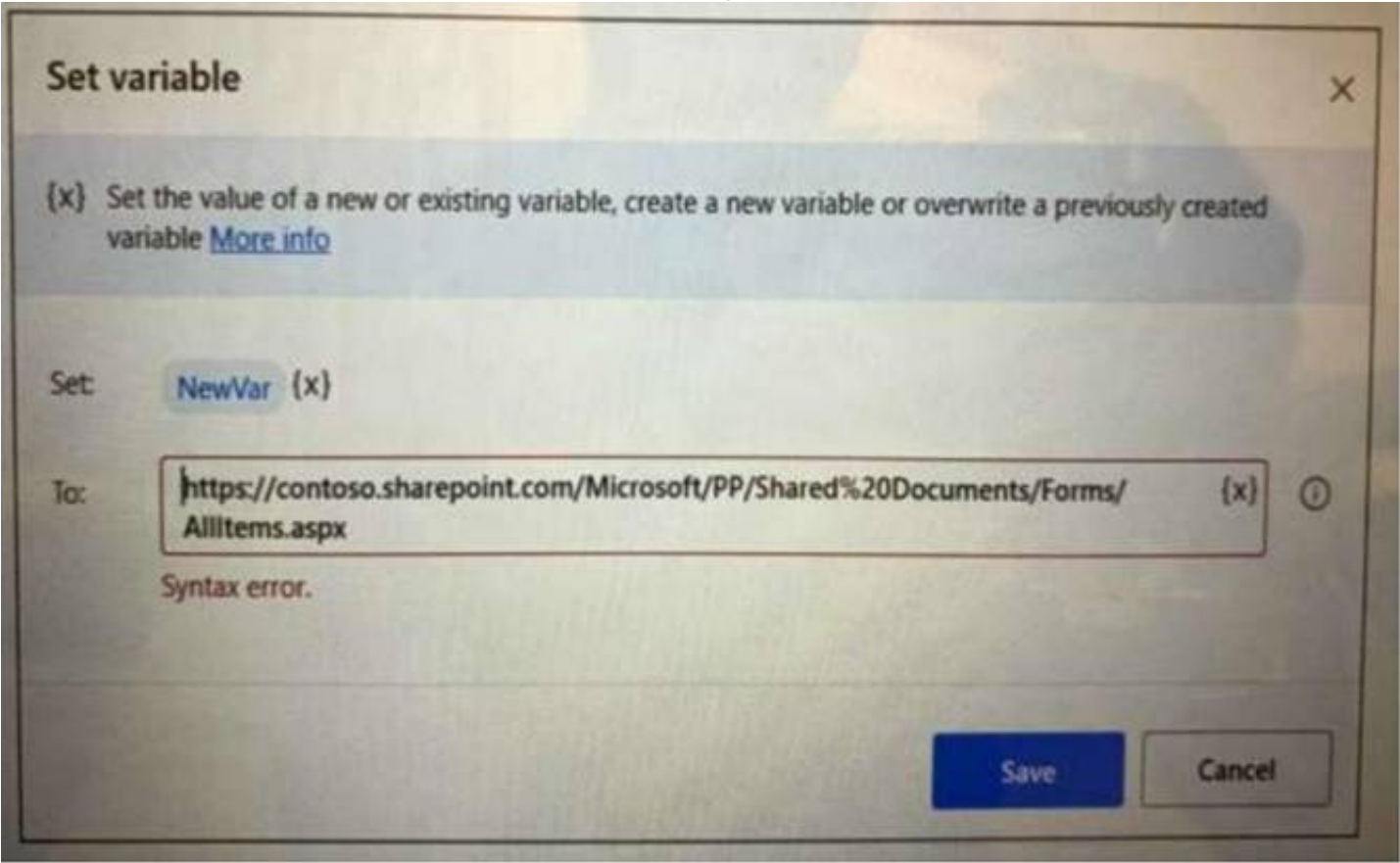
Answer: A

Explanation:

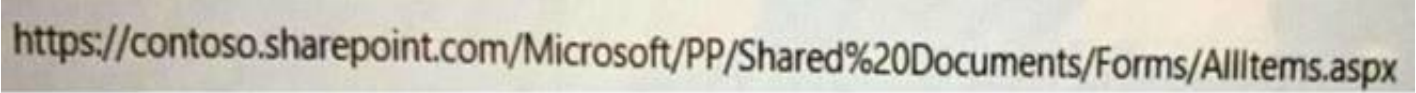


NEW QUESTION 8

- (Exam Topic 3)
You create a variable named NewVar as shown in the configuration screen below.



You attempt to set the value of NewVar to the following URL:



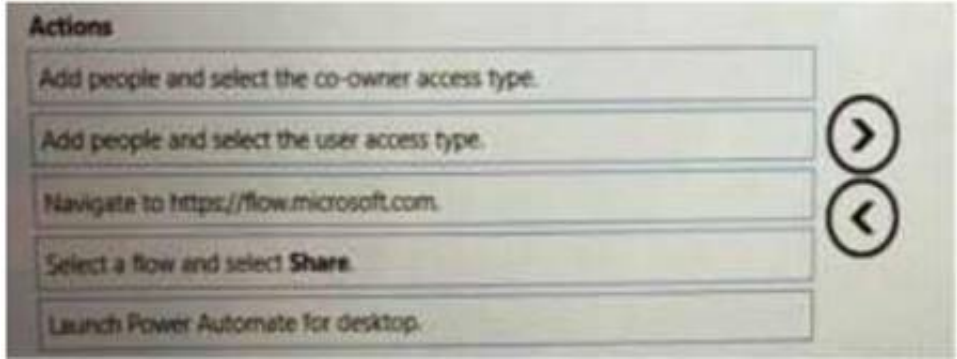
The Set variable page alerts you that there is a syntax error. You need to resolve the issue. What should you do?

- A. Escape the percent sign (%) with a back slash (\%).
- B. Replace the percent sign (%) with two percent signs (%%).
- C. Replace the forward slash characters (/) with two forward slash characters (/).
- D. Escape the forward slash characters (/) with a back slash (\).

Answer: D

NEW QUESTION 9

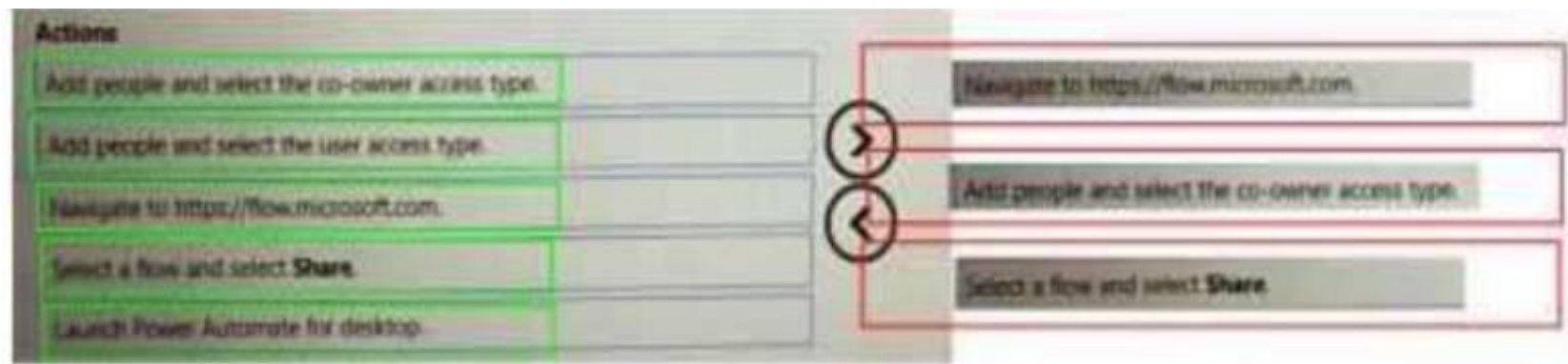
- (Exam Topic 3)
You develop a desktop flow for a company.
You need to ensure that another user can modify the flow.
Which three actions should you perform in sequence? To answer, move the appropriate actions from the order.



- A. Mastered
- B. Not Mastered

Answer: A

Explanation:



NEW QUESTION 10

- (Exam Topic 3)
You are developing a custom connector.
You need to create the definition for the connector.
Which features should you use? To answer, select the appropriate options in the answer area. NOTE: Each correct selection is worth one point.

Answer Area

Scenario	Feature
Define operations that users can perform.	<div>Code</div> <div>Action</div> <div>Policy</div> <div>Trigger</div>
Define actions that will be invoked by events.	<div>Code</div> <div>Action</div> <div>Policy</div> <div>Trigger</div>
Change the host URL for specific actions.	<div>Code</div> <div>Action</div> <div>Policy</div> <div>Trigger</div>
Extract data from responses by using regex expressions.	<div>Code</div> <div>Action</div> <div>Policy</div> <div>Trigger</div>

- A. Mastered
- B. Not Mastered

Answer: A

Explanation:

Answer Area

Scenario	Feature
Define operations that users can perform.	<div>Code</div> <div>Action</div> <div>Policy</div> <div>Trigger</div>
Define actions that will be invoked by events.	<div>Code</div> <div>Action</div> <div>Policy</div> <div>Trigger</div>
Change the host URL for specific actions.	<div>Code</div> <div>Action</div> <div>Policy</div> <div>Trigger</div>
Extract data from responses by using regex expressions.	<div>Code</div> <div>Action</div> <div>Policy</div> <div>Trigger</div>

NEW QUESTION 10

- (Exam Topic 3)
You are developing a cloud flow.
The flow must be able to query several Azure endpoints and must use standard actions where possible. You need to configure the flow.
Which actions should you use? To answer, select the appropriate options in the answer area. NOTE: Each correct selection is worth one point.

Requirement	Action
Issue POST requests to the Microsoft Graph API by using application permissions.	HTTP HTTP with Azure AD Send an HTTP request to SharePoint Office 365 groups send an HTTP request
Issue GET requests to the Microsoft Graph API by using delegated permissions.	HTTP HTTP with Azure AD Send an HTTP request to SharePoint Office 365 groups send an HTTP request
Issue GET requests to the SharePoint REST API by using delegated permissions.	HTTP HTTP with Azure AD Send an HTTP request to SharePoint Office 365 groups send an HTTP request
Issue GET requests to the SharePoint REST API by using delegated permissions.	HTTP HTTP with Azure AD Send an HTTP request to SharePoint Office 365 groups send an HTTP request
Issue POST requests to SharePoint REST API by using application permissions.	HTTP HTTP with Azure AD Send an HTTP request to SharePoint Office 365 groups send an HTTP request

- A. Mastered
- B. Not Mastered

Answer: A

Explanation:

Requirement	Action
Issue POST requests to the Microsoft Graph API by using application permissions.	HTTP HTTP with Azure AD Send an HTTP request to SharePoint Office 365 groups send an HTTP request
Issue GET requests to the Microsoft Graph API by using delegated permissions.	HTTP HTTP with Azure AD Send an HTTP request to SharePoint Office 365 groups send an HTTP request
Issue GET requests to the SharePoint REST API by using delegated permissions.	HTTP HTTP with Azure AD Send an HTTP request to SharePoint Office 365 groups send an HTTP request
Issue GET requests to the SharePoint REST API by using delegated permissions.	HTTP HTTP with Azure AD Send an HTTP request to SharePoint Office 365 groups send an HTTP request
Issue POST requests to SharePoint REST API by using application permissions.	HTTP HTTP with Azure AD Send an HTTP request to SharePoint Office 365 groups send an HTTP request

NEW QUESTION 15

- (Exam Topic 3)
You create the following flows:

1

Get current date and time

Retrieve the current datetime and store it into `CurrentDateTime`

2

Launch new Microsoft Edge

Launch Microsoft Edge, navigate to `'https://www.google.ca/?gws_rd=ssl'` and store the instance info `Browser`

3

Launch Excel

Launch Excel with a blank document using an existing excel process

4

Get active Excel worksheet

Get the name and index of the active worksheet of the Excel document in instance `ExcelInstance`

5

Launch Excel

Launch Excel with a blank document using an existing excel process

6

Focus window

Focus window with title `"Microsoft Edge"`

7

Set window state

Set the state of window with title `"Microsoft Edge"` to `Maximized`

8

Get active Excel worksheet

Get the name and index of the active worksheet of the Excel document in instance `ExcelInstance2`

9

Send keys

Send the following keystrokes: `"Control+X"` to the foreground window

Answer Area

Questions

Which line contains a breakpoint?

To which window does the action at step 9 send keystrokes?

Response

1

2

3

4

5

the Edge window launched in step 2

the Excel instance launched in step 3

the Excel instance launched in step 4

- A. Mastered
- B. Not Mastered

Answer: A

Explanation:

Answer Area

Questions

Which line contains a breakpoint?

To which window does the action at step 9 send keystrokes?

Response

1

2

3

4

5

the Edge window launched in step 2

the Excel instance launched in step 3

the Excel instance launched in step 4

NEW QUESTION 17

- (Exam Topic 3)

You are designing a user interface automation that uses a Power Automate for desktop flow. The solution must allow you to use wildcard characters including question marks and asterisks to define a window. You need to select the window mode for the automation. Which window mode should you use?

- A. By window UI element
- B. By title and/or class
- C. By window instance/handle
- D. By variable

Answer: D

NEW QUESTION 22

- (Exam Topic 3)

You have a flow that interacts with different SharePoint sites. You add the flow to a solution.

You redeploy the solution to production each time you make a change to the flow. You do not want to change the SharePoint site URL every time you redeploy the solution.

You need to configure the solution. Which solution component should you use?

- A. Environment variable
- B. Web resource
- C. Managed identity
- D. Connection reference

Answer: D

NEW QUESTION 26

- (Exam Topic 3)

You are developing a solution for a medical practice. The solution must use an artificial intelligence (AI) model to evaluate medical X-ray images and detect broken bones.

You need to create the AI model for the solution. Solution: Use Azure Computer Vision to create the model. Does the solution meet the goal?

- A. Yes
- B. No

Answer: B

NEW QUESTION 28

- (Exam Topic 3)

You create a Microsoft Power Platform solution. You create variables to define input values for the flow. You export the solution as managed and import the solution into a user acceptance testing (UAT) environment.

The flow in the UAT environment is still using the values from the development (DEV) environment.

You need to resolve the issue.

Which four actions should you perform in sequence? To answer, move the appropriate actions from the list of actions to the answer area and arrange them in the correct order.

Actions

Turn the flow off and then on again.

Select Current value and then select Remove from this solution.

Delete the solution from the UAT environment.

Export and reimport the solution.

Select Current value and then select Remove from environment.

In the UAT environment, navigate to the solution and edit the details for each environment variable.

In the DEV environment, navigate to the solution and edit the details for each environment variable.

Answer Area

>

<

- A. Mastered
- B. Not Mastered

Answer: A

Explanation:

Actions

Turn the flow off and then on again.

Select Current value and then select Remove from this solution.

Delete the solution from the UAT environment.

Export and reimport the solution.

Select Current value and then select Remove from environment.

In the UAT environment, navigate to the solution and edit the details for each environment variable.

In the DEV environment, navigate to the solution and edit the details for each environment variable.

Answer Area

Select Current value and then select Remove from environment.

Turn the flow off and then on again.

Delete the solution from the UAT environment.

In the DEV environment, navigate to the solution and edit the details for each environment variable.

NEW QUESTION 32

- (Exam Topic 3)

You are designing automation processes.
You need to configure the run mode for each automation scenario.
Which run modes should you use? To answer, drag the appropriate run modes to the correct scenarios. Each run mode may be used once, more than once, or not at all. You may need to drag the split bar between panes or scroll to view content.
NOTE: Each correct selection is worth one point.

Run modes	Answer Area	Scenario	Run mode
Attended	⋮	Automate the transfer of data from a file you save locally in an active user session to an application installed on your machine.	Run mode
Unattended		Run 10 credit card checks in parallel in a system without API.	Run mode
		Trigger an automation to update data in a customer relationship management app after an approval process completes.	Run mode

- A. Mastered
- B. Not Mastered

Answer: A

Explanation:

Run modes	Answer Area	Scenario	Run mode
Attended	⋮	Automate the transfer of data from a file you save locally in an active user session to an application installed on your machine.	Unattended
Unattended		Run 10 credit card checks in parallel in a system without API.	Unattended
		Trigger an automation to update data in a customer relationship management app after an approval process completes.	Attended

NEW QUESTION 36

- (Exam Topic 3)
You are developing desktop flows for a company.
You need to use Recorder to record steps that you are performing in target applications.
Which recording modes will Recorder use? To answer, drag the appropriate recording modes to the correct target applications. Each recording mode may be used once, more than once, or not at all. You may need to drag the split bar between panes or scroll to view content.
NOTE: Each correct selection is worth one point.

Recording modes	Answer Area	Target application	Recording mode
Standard	⋮	Web browser	Recording mode
Image based		iFrame within a web browser	Recording mode
Web		Java applet	Recording mode
		Windows application	Recording mode

- A. Mastered
- B. Not Mastered

Answer: A

Explanation:

Recording modes	Answer Area	Target application	Recording mode
Standard	⋮	Web browser	Web
Image based		iFrame within a web browser	Image based
Web		Java applet	Standard
		Windows application	Standard

NEW QUESTION 39

- (Exam Topic 3)
You are creating a cloud flow that will use two Update Row actions to interact with Microsoft Dataverse. Neither of these actions are dependent on each other. You must minimize the amount of processing time required to complete the flow. You need to implement the actions in the cloud flow.
Solution: Create a do until loop. Does the solution meet the goal?

- A. Yes
- B. No

Answer: A

NEW QUESTION 40

- (Exam Topic 3)

You are developing a cloud flow.

You write expressions for the following JSON object. (Line numbers are included for reference only.)

```
01 {
02   "customerNumber": 10091,
03   "customerPhones": [
04     "011-2345213",
05     "0114456129"
06   ]
07 }
```

The flow parses JSON data by using the following schema;

```
09 {
10   "type": "object",
11   "properties": {
12     "customerName": {
13       "type": [
14         "string",
15         "null"
16       ]
17     },
18     "customerNumber": {
19       "type": "integer"
20     },
21     "customerPhones": {
22       "type": "array",
23       "minItems": 1,
24       "items": {
25         "type": "string"
26       }
27     }
28   }
29 }
```

For each of the following statements, select Yes if the statement is true. Otherwise, select No. NOTE: Each correct selection is worth one point.

Answer Area

Statements	Yes	No
The expression <code>empty(body('Parse_JSON')['customerName'])</code> returns true.	<input type="radio"/>	<input type="radio"/>
The expression <code>concat(body('Parse_JSON').customerName, ': ', body('Parse_JSON').customerNumber)</code> returns 10091.	<input type="radio"/>	<input type="radio"/>
The expression <code>equals(body('Parse_JSON').customerPhones[2], '')</code> returns true.	<input type="radio"/>	<input type="radio"/>
The expression <code>int(body('Parse_JSON')['customerPhones'][1])</code> returns 114456129.	<input type="radio"/>	<input type="radio"/>

- A. Mastered
- B. Not Mastered

Answer: A

Explanation:

Answer Area

Statements	Yes	No
The expression <code>empty(body('Parse_JSON')['customerName'])</code> returns <code>true</code> .	<input checked="" type="radio"/>	<input type="radio"/>
The expression <code>concat(body('Parse_JSON').customerName, ': ', body('Parse_JSON').customerNumber)</code> returns <code>10091</code> .	<input checked="" type="radio"/>	<input type="radio"/>
The expression <code>equals(body('Parse_JSON')?.customerPhones[2], '')</code> returns <code>true</code> .	<input checked="" type="radio"/>	<input type="radio"/>
The expression <code>int(body('Parse_JSON')?['customerPhones']?[1])</code> returns <code>114456129</code> .	<input type="radio"/>	<input checked="" type="radio"/>

NEW QUESTION 41

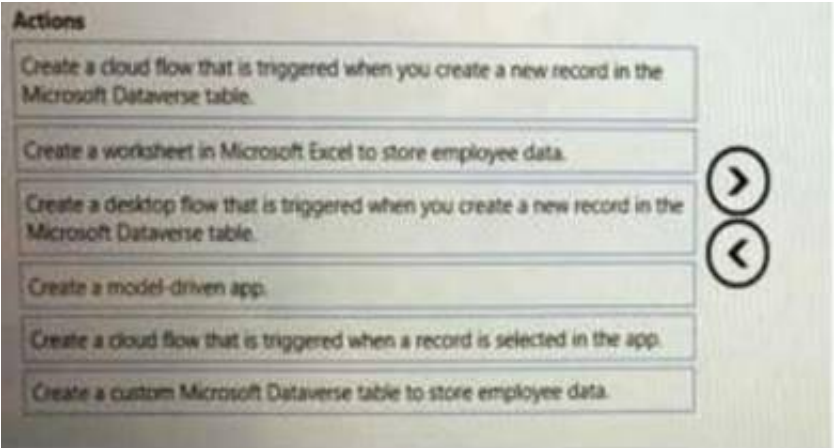
- (Exam Topic 3)

A company hires you to develop a solution that helps the company manage new hires. Users will enter information about the new employee into an app and the app will save the information to a database.

The app must be simple to use and must rely on a data model. You must implement a workflow that automatically notifies the IT department when new employee records are created in the database.

You need to create the solution.

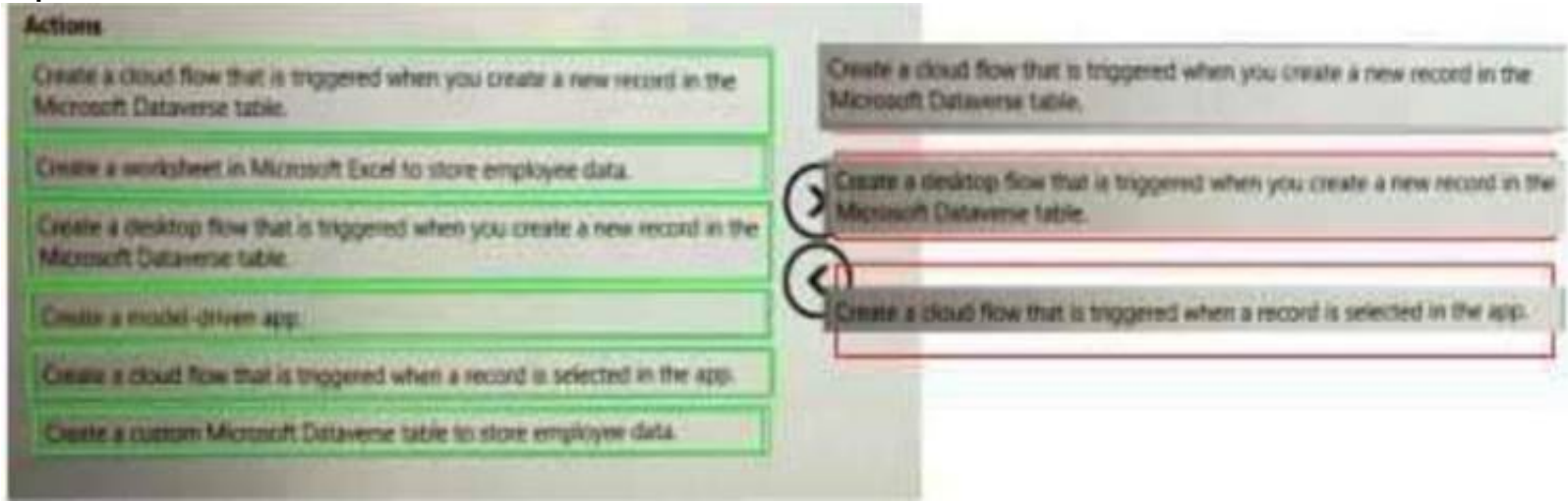
Which three actions should you perform in sequence? To answer, move the appropriate actions from the list of actions to the answer area and arrange them in the correct order.



- A. Mastered
- B. Not Mastered

Answer: A

Explanation:



NEW QUESTION 46

- (Exam Topic 3)

You have a Microsoft Dataverse table in a solution. You delete fields from the table.

You need to automatically delete the fields from the Microsoft Dataverse table when you import the updated solution into a target environment

Which import option should you use?

- A. Stage for upgrade
- B. Update
- C. Upgrade

Answer: C

NEW QUESTION 50

- (Exam Topic 3)

You are developing automation solutions for a company.

You need to select the components to use for each scenario. You must minimize development efforts. Which methods should you use? To answer, select the appropriate options in the answer area.

NOTE: Each correct selection is worth one point.

Answer Area	
Scenario	Component
Query items from a SharePoint list.	<div><div></div><div>Built-in connector</div><div>Custom connector</div><div>HTTP connector</div><div>Azure API Management</div></div>
Share methods from a third-party REST API with an organization.	<div><div></div><div>Built-in connector</div><div>Custom connector</div><div>HTTP connector</div><div>Browser automation</div></div>
Call a Microsoft Graph API endpoint using application permissions.	<div><div></div><div>Built-in connector</div><div>Custom connector</div><div>HTTP connector</div><div>Azure API Management</div></div>

- A. Mastered
- B. Not Mastered

Answer: A

Explanation:

Answer Area	
Scenario	Component
Query items from a SharePoint list.	<div><div></div><div>Built-in connector</div><div>Custom connector</div><div>HTTP connector</div><div>Azure API Management</div></div>
Share methods from a third-party REST API with an organization.	<div><div></div><div>Built-in connector</div><div>Custom connector</div><div>HTTP connector</div><div>Browser automation</div></div>
Call a Microsoft Graph API endpoint using application permissions.	<div><div></div><div>Built-in connector</div><div>Custom connector</div><div>HTTP connector</div><div>Azure API Management</div></div>

NEW QUESTION 54

- (Exam Topic 3)

You are developing a desktop flow that reads data from a table in a Microsoft Excel workbook. You need to read the cell in the fourth row and first column of the table. Which two expressions can you use? Each correct answer presents a complete solution.

NOTE: Each correct answer is worth one point.

- A. %ExcelData[4]['Column1']%
- B. %ExcelData[1][4]%
- C. %ExcelData["Column1"][4]X
- D. XExcelData[4][9]X

Answer: D

NEW QUESTION 55

- (Exam Topic 3)

A company develops an automation solution.

You need to manage the flows. To answer, select the appropriate options in the answer area. NOTE: Each correct selection is worth one point.

Answer Area

Requirement	Action
You must run one specific flow from the queue after a flow which is currently running completes.	<div>In the desktop flow queue: select move to top.</div> <div>In the desktop flow queue: change the priority.</div> <div>In the cloud flow: change the priority for the desktop flow action to High.</div>
You develop an automation. The automation must run at high priority each time it runs.	<div>In the Desktop flow runs page: change the priority.</div> <div>In the Desktop flow run queue: change the priority.</div> <div>In the cloud flow: change the priority for the desktop flow action to High.</div>

- A. Mastered
- B. Not Mastered

Answer: A

Explanation:
Answer Area

Requirement	Action
You must run one specific flow from the queue after a flow which is currently running completes.	<div>In the desktop flow queue: select move to top.</div> <div>In the desktop flow queue: change the priority.</div> <div>In the cloud flow: change the priority for the desktop flow action to High.</div>
You develop an automation. The automation must run at high priority each time it runs.	<div>In the Desktop flow runs page: change the priority.</div> <div>In the Desktop flow run queue: change the priority.</div> <div>In the cloud flow: change the priority for the desktop flow action to High.</div>

NEW QUESTION 56

- (Exam Topic 3)

You create an environment for a company. You need to configure security to meet the company's requirements and follow the principle of least privilege. Which security roles should you assign? To answer, select the appropriate options in the answer area.

NOTE:Each correct selection is worth one point.

Requirement	Security role
A user must be able to register new machines in the environment.	<div>Environment Maker</div> <div>Desktop Flows Machine Owner</div>
A user must be able to share their machine with another user.	<div>Environment Maker</div> <div>Desktop Flows Machine User</div> <div>Desktop Flows Machine User Can Share</div>
A user must be able to run desktop flows on a registered machine.	<div>Environment Maker</div> <div>Desktop Flows Machine User</div> <div>Desktop Flows Machine User Can Share</div>
A user must be able to create a machine group and add machines to the machine group.	<div>Environment Maker</div> <div>Desktop Flows Machine User</div> <div>Desktop Flows Machine Owner</div>

- A. Mastered
- B. Not Mastered

Answer: A

Explanation:

Requirement	Security role
A user must be able to register new machines in the environment.	Environment Maker Desktop Flows Machine Owner
A user must be able to share their machine with another user.	Environment Maker Desktop Flows Machine User Desktop Flows Machine User Can Share
A user must be able to run desktop flows on a registered machine.	Environment Maker Desktop Flows Machine User Desktop Flows Machine User Can Share
A user must be able to create a machine group and add machines to the machine group.	Environment Maker Desktop Flows Machine User Desktop Flows Machine Owner

NEW QUESTION 60

- (Exam Topic 3)

A company has a business-critical desktop flow that runs on a single machine. The number of daily runs for the flow has significantly increased recently. Users report that the time required for the flow to complete is no longer acceptable. You need to scale the solution. Which four actions should you perform in sequence? To answer, move the appropriate actions from the list of actions to the answer area and arrange them in the correct order.

Actions

Update the cloud flow connection.

Sign into a machine and launch the Power Automate portal. Add the current machine to an existing group.

Sign into every other machine and add the machines to the group.

Launch the Power Automate machine runtime on one machine and add the machine to a group.

Provision new machines and install Power Automate for desktop on each machine.

Launch Power Automate for desktop on one machine and add the machine to a group.

Create a new group in the Power Automate portal and add all machines to the group.

Answer area

- A. Mastered
- B. Not Mastered

Answer: A

Explanation:

Actions

Update the cloud flow connection.

Sign into a machine and launch the Power Automate portal. Add the current machine to an existing group.

Sign into every other machine and add the machines to the group.

Launch the Power Automate machine runtime on one machine and add the machine to a group.

Provision new machines and install Power Automate for desktop on each machine.

Launch Power Automate for desktop on one machine and add the machine to a group.

Create a new group in the Power Automate portal and add all machines to the group.

Answer area

Sign into every other machine and add the machines to the group.

Launch the Power Automate machine runtime on one machine and add the machine to a group.

Update the cloud flow connection.

Create a new group in the Power Automate portal and add all machines to the group.

NEW QUESTION 63

- (Exam Topic 3)

You are designing automation solutions that interact with a desktop application.
You need to select the appropriate UI automation action for each business requirement.
Which automation action should you use? To answer, select the appropriate options in the answer area. NOTE: Each correct selection is worth one point.

Answer Area	
Requirement	UI automation action
Retrieve the state from a checkbox in the desktop application.	<div>Get selected checkboxes in window</div> <div>Get details of a UI element in window</div> <div>Get selected radio button in window</div> <div>Extract data from window</div>
Bring the desktop application to the foreground.	<div>Focus window</div> <div>Get details of window</div> <div>Get details of a UI element in window</div> <div>Set window state</div>
Suspend a process until a specific window opens.	<div>Wait for window</div> <div>Wait for window content</div> <div>Set window state</div> <div>Terminate process</div>

- A. Mastered
- B. Not Mastered

Answer: A

Explanation:

Answer Area	
Requirement	UI automation action
Retrieve the state from a checkbox in the desktop application.	<div>Get selected checkboxes in window</div> <div>Get details of a UI element in window</div> <div>Get selected radio button in window</div> <div>Extract data from window</div>
Bring the desktop application to the foreground.	<div>Focus window</div> <div>Get details of window</div> <div>Get details of a UI element in window</div> <div>Set window state</div>
Suspend a process until a specific window opens.	<div>Wait for window</div> <div>Wait for window content</div> <div>Set window state</div> <div>Terminate process</div>

NEW QUESTION 65

- (Exam Topic 3)
You are developing automation solutions for a company.
You need to select the applicable flow type to automate the following tools and technologies:

- Microsoft Excel
- Desktop application
- File system

Which flow types should you use? To answer, drag the appropriate flow types to the correct automation targets. Each flow type may be used once, more than once, or not at all. You may need to drag the split bar between panes or scroll to view content.
NOTE: Each correct selection is worth one point.

Flow types	Answer Area	
<div>Cloud flows only</div> <div>Desktop flows only</div> <div>Cloud flows or desktop flows</div>	<div>Automation target</div> <div>Microsoft Excel</div> <div>Desktop application</div> <div>File system</div>	<div>Flow type</div> <div>Flow type</div> <div>Flow type</div>

- A. Mastered
- B. Not Mastered

Answer: A

Explanation:

Flow types

Cloud flows only

Desktop flows only

Cloud flows or desktop flows

Answer Area

Automation target

Microsoft Excel

Desktop application

File system

Flow type

Cloud flows only

Cloud flows or desktop flows

Desktop flows only

NEW QUESTION 66

- (Exam Topic 3)

A client would like you to create a custom connector. You need to configure the connector. Which element is required?

- A. API Key
- B. On-premises data gateway
- C. Power Automate per user license
- D. JSON sample for request
- E. Power Automate per flow license

Answer: C

NEW QUESTION 70

.....

Thank You for Trying Our Product

We offer two products:

1st - We have Practice Tests Software with Actual Exam Questions

2nd - Questions and Answers in PDF Format

PL-500 Practice Exam Features:

- * PL-500 Questions and Answers Updated Frequently
- * PL-500 Practice Questions Verified by Expert Senior Certified Staff
- * PL-500 Most Realistic Questions that Guarantee you a Pass on Your First Try
- * PL-500 Practice Test Questions in Multiple Choice Formats and Updates for 1 Year

100% Actual & Verified — Instant Download, Please Click
[Order The PL-500 Practice Test Here](#)