

## Exam Questions MD-102

Endpoint Administrator

<https://www.2passeasy.com/dumps/MD-102/>



#### NEW QUESTION 1

- (Exam Topic 4)

You have a Microsoft 365 subscription that uses Microsoft Intune Suite. You use Microsoft Intune to manage Windows 11 devices.

You need to implement passwordless authentication that requires users to use number matching Which authentication method should you use?

- A. Microsoft Authenticator
- B. voice calls
- C. FIDO2 security keys
- D. text messages

**Answer:** A

#### NEW QUESTION 2

- (Exam Topic 4)

You have a Microsoft 365 subscription that contains 100 devices enrolled in Microsoft Intune. You need to review the startup processes and how often each device restarts.

What should you use?

- A. Endpoint analytics
- B. Intune Data Warehouse
- C. Azure Monitor
- D. Device Management

**Answer:** B

#### NEW QUESTION 3

- (Exam Topic 4)

You have 100 computers that run Windows 10. You have no servers. All the computers are joined to Microsoft Azure Active Directory (Azure AD).

The computers have different update settings, and some computers are configured for manual updates. You need to configure Windows Update. The solution must meet the following requirements:

- The configuration must be managed from a central location.
- Internet traffic must be minimized.
- Costs must be minimized.

How should you configure Windows Update? To answer, select the appropriate options in the answer area.

NOTE: Each correct selection is worth one point.

Windows Update technology to use:

Windows Server Update Services (WSUS)
Microsoft Endpoint Configuration Manager
Windows Update for Business

Manage the configuration by using:

A Group Policy object (GPO)
Microsoft Endpoint Configuration Manager
Microsoft Intune

Manage the traffic by using:

Delivery Optimization
BranchCache
Peer cache

- A. Mastered
- B. Not Mastered

**Answer:** A

#### Explanation:

Box 1: Windows Server Update Services (WSUS)

Windows Server Update Services (WSUS) enables information technology administrators to deploy the latest Microsoft product updates. You can use WSUS to fully manage the distribution of updates that are released through Microsoft Update to computers on your network.

Windows Server Update Services is a built-in server role that includes the following enhancements: Can be added and removed by using the Server Manager

Includes Windows PowerShell cmdlets to manage the most important administrative tasks in WSUS Etc.

Box 2: A Group Policy object

In an Active Directory environment, you can use Group Policy to define how computers and users can interact with Windows Update to obtain automatic updates from Windows Server Update Services (WSUS).

Box 3: BranchCache

BranchCache is a bandwidth-optimization feature that has been available since the Windows Server 2008 R2 and Windows 7 operating systems. Each client has a cache and acts as an alternate source for content that devices on its own network request. Windows Server Update Services (WSUS) and Microsoft Endpoint Manager can use BranchCache to optimize network bandwidth during update deployment, and it's easy to configure for either of them. BranchCache has two operating modes: Distributed Cache mode and Hosted Cache mode.

Reference: <https://docs.microsoft.com/en-us/windows/deployment/update/waas-branchcache> <https://docs.microsoft.com/en-us/windows-server/administration/windows-server-update-services/deploy/4-conf>

#### NEW QUESTION 4

- (Exam Topic 4)

You use Microsoft Intune and Intune Data Warehouse.

You need to create a device inventory report that includes the data stored in the data warehouse. What should you use to create the report?

- A. the Azure portal app
- B. Endpoint analytics
- C. the Company Portal app
- D. Microsoft Power BI

**Answer: D**

**Explanation:**

You can use the Power BI Compliance app to load interactive, dynamically generated reports for your Intune tenant. Additionally, you can load your tenant data in Power BI using the OData link. Intune provides connection settings to your tenant so that you can view the following sample reports and charts related to:

Devices Enrollment

App protection policy Compliance policy

Device configuration profiles Software updates

Device inventory logs

Note: Load the data in Power BI using the OData link

With a client authenticated to Azure AD, the OData URL connects to the RESTful endpoint in the Data Warehouse API that exposes the data model to your reporting client. Follow these instructions to use Power BI Desktop to connect and create your own reports.

- Sign in to the Microsoft Endpoint Manager admin center.
- Select Reports > Intune Data warehouse > Data warehouse.
- Retrieve the custom feed URL from the reporting blade, for example:
- Open Power BI Desktop.
- Choose File > Get Data. Select OData feed.
- Choose Basic.
- Type or paste the OData URL into the URL box.
- Select OK.
- If you have not authenticated to Azure AD for your tenant from the Power BI desktop client, type your credentials. To gain access to your data, you must authorize with Azure Active Directory (Azure AD) using OAuth 2.0.
- Select Organizational account.
- Type your username and password.
- Select Sign In.
- Select Connect.
- Select Load.

Reference: <https://docs.microsoft.com/en-us/mem/intune/developer/reports-proc-get-a-link-powerbi>

**NEW QUESTION 5**

- (Exam Topic 4)

Your network contains an Active Directory domain named contoso.com. The domain contains two computers named Computer1 and Computer2 that run Windows 10. On Computer1, you need to run the

Invoke-Command cmdlet to execute several PowerShell commands on Computer2. What should you do first?

- A. On Computer2, run the Enable-PSRemoting cmdlet.
- B. On Computer2, add Computer1 to the Remote Management Users group.
- C. From Active Directory, configure the Trusted for Delegation setting for the computer account of Computer2.
- D. On Computer1, run the HcK-PSSession cmdlet.

**Answer: C**

**NEW QUESTION 6**

- (Exam Topic 4)

You have a Microsoft 365 subscription that includes Microsoft Intune.

You need to implement a Microsoft Defender for Endpoint solution that meets the following requirements:

- Enforces compliance for Defender for Endpoint by using Conditional Access
- Prevents suspicious scripts from running on devices

What should you configure? To answer, drag the appropriate features to the correct requirements. Each feature may be used once, more than once, or not at all.

You may need to drag the split bar between panes or scroll to view content.

NOTE: Each correct selection is worth one point.

Features	Answer Area
A device restriction policy	Enforces compliance: <input type="text"/>
A security baseline	Prevents suspicious scripts: <input type="text"/>
An attack surface reduction (ASR) rule	
An Intune connection	

A. Mastered

B. Not Mastered

Answer: A

Explanation:

To enforce compliance for Defender for Endpoint by using Conditional Access, you need to configure an Intune connection in the Defender for Endpoint portal. This allows you to use Intune device compliance policies to evaluate the health and compliance status of devices that are enrolled in Defender for Endpoint. You can then use Conditional Access policies to block or allow access to cloud apps based on the device compliance status. References: <https://docs.microsoft.com/en-us/windows/security/threat-protection/microsoft-defender-atp/conditional-access>  
To prevent suspicious scripts from running on devices, you need to configure an attack surface reduction (ASR) rule in Intune. ASR rules are part of the endpoint protection settings that you can apply to devices by using device configuration profiles. You can use the ASR rule “Block Office applications from creating child processes” to prevent Office applications from launching child processes such as scripts or executables. References: <https://docs.microsoft.com/en-us/mem/intune/protect/endpoint-protection-windows-10#attack-surface-reduction>

NEW QUESTION 7

- (Exam Topic 4)  
You have a Microsoft Azure subscription that contains an Azure Log Analytics workspace.  
You deploy a new computer named Computer1 that runs Windows 10. Computer1 is in a workgroup. You need to ensure that you can use Log Analytics to query events from Computer1.  
What should you do on Computer1?

- A. Join Azure AD.
- B. Configure Windows Defender Firewall
- C. Create an event subscription.
- D. Install the Azure Monitor Agent.

Answer: D

NEW QUESTION 8

- (Exam Topic 4)  
You have an on-premises Active Directory domain that syncs to Azure AD tenant.  
The tenant contains computers that run Windows 10. The computers are hybrid Azure AD joined and enrolled in Microsoft Intune. The Microsoft Office settings on the computers are configured by using an Group Policy Object (GPO).  
You need to migrate the GPO to Intune.  
Which three actions should you perform in sequence? To answer, move the appropriate actions from the list of actions to the answer area and arrange them in the correct order.

Actions

Assign the policy.

Create a compliance policy.

Set a scope tag to the policy.

import an ADMX file.

Create a configuration profile.

Configure the Administrative Templates settings.

Assign the profile.

>

<

Answer Area

<

>

- A. Mastered
- B. Not Mastered

Answer: A

Explanation:

Actions

Assign the policy.

Create a compliance policy.

Set a scope tag to the policy.

Import an ADMX file.

Create a configuration profile.

Configure the Administrative Templates settings.

Assign the profile.

>

<

Answer Area

Create a configuration profile.

Configure the Administrative Templates settings.

Assign the profile.

<

>

NEW QUESTION 9

- (Exam Topic 4)  
You have a Windows 11 capable device named Device1 that runs the 64-bit version of Windows 10 Enterprise and has Microsoft Office 2019 installed. You have



the Windows 11 Enterprise images shown in the following table.

Name	Platform	Description
Image1	x64	Custom Windows 11 image that has Office 2021 installed
Image2	x64	Default Windows 11 image created by Microsoft

Which images can be used to perform an in-place upgrade of Device1?

- A. image1 only
- B. Image2only
- C. Image1 and Image2

**Answer:** B

#### NEW QUESTION 10

- (Exam Topic 4)

You have a Microsoft 365 subscription that uses Microsoft Intune.

You plan to use Windows Autopilot to provision 25 Windows 11 devices. You need to meet the following requirements during device provisioning:

- Display the progress of app and profile deployments.
- Join the devices to Azure AD.

What should you configure to meet each requirement? To answer drag the appropriate settings to the correct requirements. Each setting may be used once, more than once, or not at all. You may need to drag the split bar between panes or scroll to view content.

NOTE: Each correct selection is worth one point.

**Settings**

CNAME Validation

Co-management Settings

Deployment Profiles

Enrollment notifications

Enrollment Status Page

**Answer Area**

Display the progress of app and profile deployments:

Join the devices to Azure AD:

- A. Mastered
- B. Not Mastered

**Answer:** A

#### Explanation:

**Settings**

CNAME Validation

Co-management Settings

Deployment Profiles

Enrollment notifications

Enrollment Status Page

**Answer Area**

Display the progress of app and profile deployments:

Join the devices to Azure AD:

#### NEW QUESTION 10

- (Exam Topic 4)

You have a Windows 10 device named Device1 that is joined to Active Directory and enrolled in Microsoft Intune.

Device1 is managed by using Group Policy and Intune.

You need to ensure that the Intune settings override the Group Policy settings. What should you configure?

- A. a device configuration profile
- B. a device compliance policy
- C. an MDM Security Baseline profile
- D. a Group Policy Object (GPO)

**Answer:** A

#### Explanation:

A device configuration profile is a collection of settings that can be applied to devices enrolled in Microsoft Intune. You can use device configuration profiles to manage Windows 10 devices that are joined to Active Directory and enrolled in Intune. To ensure that the Intune settings override the Group Policy settings, you need to enable the policy CSP setting called MDMWinsOverGP in the device configuration profile. This setting will give precedence to the MDM policy over any conflicting Group Policy settings. References: [Us policy CSP settings to create custom device

configuration profiles]

### NEW QUESTION 13

- (Exam Topic 4)

Your network contains an on-premises Active Directory Domain Services (AD DS) domain that syncs with an Azure AD tenant by using Azure AD Connect.

You use Microsoft Intune and Configuration Manager to manage devices.

You need to recommend a deployment plan for new Windows 11 devices. The solution must meet the following requirements:

- Devices for the marketing department must be joined to the AD DS domain only. The IT department will install complex applications on the devices at build time, before giving the devices to the marketing department users.
- Devices for The sales department must be Azure AD joined. The devices will be shipped directly from the manufacturer to The homes of the sales department users.
- Administrative effort must be minimized.

Which deployment method should you recommend for each department? To answer, select the appropriate options in the answer area. NOTE: Each correct selection is worth one point.

**Answer Area**

Sales: Windows Autopilot with automatic registration  
 Configuration Manager  
 Windows Autopilot with automatic registration  
 Windows Autopilot with manual registration  
 Windows Autopilot with OEM registration

Marketing: Configuration Manager  
 Configuration Manager  
 Windows Autopilot with automatic registration  
 Windows Autopilot with manual registration  
 Windows Autopilot with OEM registration

- A. Mastered  
 B. Not Mastered

**Answer: A**

**Explanation:**

**Answer Area**

Sales: Windows Autopilot with automatic registration  
 Configuration Manager  
 Windows Autopilot with automatic registration  
 Windows Autopilot with manual registration  
 Windows Autopilot with OEM registration

Marketing: Configuration Manager  
 Configuration Manager  
 Windows Autopilot with automatic registration  
 Windows Autopilot with manual registration  
 Windows Autopilot with OEM registration

### NEW QUESTION 17

- (Exam Topic 4)

You have a Microsoft 365 E5 subscription that uses Microsoft Intune. You have the Windows 11 devices shown in the following table.

Name	Member of	BitLocker Drive Encryption (BitLocker)
Device1	Group1	Enabled
Device2	Group1, Group3	Disabled
Device3	Group1, Group2	Enabled

You deploy the device compliance policy shown in the exhibit. (Click the Exhibit tab.)

Basics [Edit](#)

Name	Policy1
Description	--
Platform	Windows 10 and later
Profile type	Windows 10/11 compliance policy

Compliance settings [Edit](#)

Device Health

Require BitLocker	Require
-------------------	---------

Actions for noncompliance [Edit](#)

Action	Schedule	Message template	Additional recipients (via email)
Mark device noncompliant	Immediately		

Scope tags [Edit](#)

Default

Assignments [Edit](#)

Included groups

Group
Group1
Group3

Excluded groups

Group
Group2

For each of the following statements, select Yes if the statement is true. Otherwise, select No.

NOTE: Each correct selection is worth one point.

Answer Area

Statements	Yes	No
Device1 will have Policy1 assigned and will be marked as compliant.	<input type="radio"/>	<input type="radio"/>
Device2 will have Policy1 assigned and will be marked as compliant.	<input type="radio"/>	<input type="radio"/>
Device3 will have Policy1 assigned and will be marked as compliant.	<input type="radio"/>	<input type="radio"/>

- A. Mastered
- B. Not Mastered

Answer: A

Explanation:



Answer Area

Statements

Device1 will have Policy1 assigned and will be marked as compliant.

Yes

☒

No

☐

Device2 will have Policy1 assigned and will be marked as compliant.

☐
☒

Device3 will have Policy1 assigned and will be marked as compliant.

☐
☒

NEW QUESTION 22

- (Exam Topic 4)

You have a computer named Computer1 that runs Windows 11.

A user named User1 plans to use Remote Desktop to connect to Computer1.

You need to ensure that the device of User1 is authenticated before the Remote Desktop connection is established and the sign in page appears.

What should you do on Computer1?

- A. Turn on Reputation-based protection.
- B. Enable Network Level Authentication (NLA).
- C. Turn on Network Discovery.
- D. Configure the Remote Desktop Configuration service.

Answer: B

NEW QUESTION 26

- (Exam Topic 4)

You have the devices shown in the following table.

Name	Operating system	Description
Device1	32-bit version of Windows 10	Retired device
Device2	64-bit version of Windows 11	New device
Server1	Windows Server 2019	File server

You need to migrate app data from Device1 to Device2. The data must be encrypted and stored on Seryer1 during the migration.

Which command should you run on each device? To answer, select the appropriate options in the answer area. NOTE: Each correct selection is worth one point.

Answer Area

Device1:

LoadState.exe \\server1\share1 /i:MigApp.xml /v:13 /decrypt /key:"mysecretKey"  
LoadState.exe \\server1\share1 /i:MigApp.xml /v:8 /decrypt  
LoadState.exe \\server1\share1 /i:MigDocs.xml /v:13 /decrypt/key:"mysecretKey"  
ScanState.exe \\server1\share1 /i:MigApp.xml /config:Config.xml /v:13 /encrypt /key:"mysecretKey"  
ScanState.exe \\server1\share1 /i:MigApp.xml /config:Config.xml /v:8 /encrypt  
ScanState.exe \\server1\share1 /i:MigDocs.xml /v:13 /encrypt /key:"mysecretkey"

Device2:

LoadState.exe \\server1\share1 /i:MigApp.xml /v:13 /decrypt /key:"mysecretKey"  
LoadState.exe \\server1\share1 /i:MigApp.xml /v:8 /decrypt  
LoadState.exe \\server1\share1 /i:MigDocs.xml /v:13 /decrypt/key:"mysecretKey"  
ScanState.exe \\server1\share1 /i:MigApp.xml /config:Config.xml /v:13 /encrypt /key:"mysecretKey"  
ScanState.exe \\server1\share1 /i:MigApp.xml /config:Config.xml /v:8 /encrypt  
ScanState.exe \\server1\share1 /i:MigDocs.xml /v:13 /encrypt /key:"mysecretkey"

- A. Mastered
- B. Not Mastered

Answer: A

Explanation:



## Answer Area

Device1:

LoadState.exe \\server1\share1 /i:MigApp.xml /v:13 /decrypt /key:"mysecretKey"  
LoadState.exe \\server1\share1 /i:MigApp.xml /v:8 /decrypt  
LoadState.exe \\server1\share1 /i:MigDocs.xml /v:13 /decrypt/key:"mysecretKey"  
ScanState.exe \\server1\share1 /i:MigApp.xml /config:Config.xml /v:13 /encrypt /key:"mysecretKey"  
ScanState.exe \\server1\share1 /i:MigApp.xml /config:Config.xml /v:8 /encrypt  
ScanState.exe \\server1\share1 /i:MigDocs.xml /v:13 /encrypt /key:"mysecretkey"

Device2:

LoadState.exe \\server1\share1 /i:MigApp.xml /v:13 /decrypt /key:"mysecretKey"  
LoadState.exe \\server1\share1 /i:MigApp.xml /v:8 /decrypt  
LoadState.exe \\server1\share1 /i:MigDocs.xml /v:13 /decrypt/key:"mysecretKey"  
ScanState.exe \\server1\share1 /i:MigApp.xml /config:Config.xml /v:13 /encrypt /key:"mysecretKey"  
ScanState.exe \\server1\share1 /i:MigApp.xml /config:Config.xml /v:8 /encrypt  
ScanState.exe \\server1\share1 /i:MigDocs.xml /v:13 /encrypt /key:"mysecretkey"

### NEW QUESTION 30

- (Exam Topic 4)

You have a Microsoft 365 subscription that contains the devices shown in the following table.

Name	Platform
Device1	Windows 10
Device2	iOS

You plan to enroll the devices in Microsoft Intune.

How often will the compliance policy check-ins run after each device is enrolled in Intune? To answer, select the appropriate options in the answer area.

NOTE: Each correct selection is worth one point.

Device1:

Every 15 minutes for one hour, and then every eight hours  
Every five minutes for 15 minutes, then every 15 minutes for two hours, and then every eight hours  
Every three minutes for 15 minutes, then every 15 minutes for two hours, and then every eight hours

Device2:

Every 15 minutes for one hour, and then every eight hours  
Every five minutes for 15 minutes, then every 15 minutes for two hours, and then every eight hours  
Every three minutes for 15 minutes, then every 15 minutes for two hours, and then every eight hours

- A. Mastered
- B. Not Mastered

Answer: A

### Explanation:

Box 1: Every three minutes for 15 minutes, then every 15 minutes for two hours, and then around every eight hours

If devices recently enroll, then the compliance, non-compliance, and configuration check-in runs more frequently. The check-ins are estimated at:

Windows 10: Every 3 minutes for 15 minutes, then every 15 minutes for 2 hours, and then around every 8 hours

Graphical user interface, text, application, email Description automatically generated

Platform	Frequency
iOS/iPadOS	Every 15 minutes for 1 hour, and then around every 8 hours
macOS	Every 15 minutes for 1 hour, and then around every 8 hours
Android	Every 3 minutes for 15 minutes, then every 15 minutes for 2 hours, and then around every 8 hours
Windows 10/11 PCs enrolled as devices	Every 3 minutes for 15 minutes, then every 15 minutes for 2 hours, and then around every 8 hours
Windows 8.1	Every 5 minutes for 15 minutes, then every 15 minutes for 2 hours, and then around every 8 hours

Box 2: Every 15 minutes for one hour, and then every eight hours iOS/iPadOS: Every 15 minutes for 1 hour, and then around every 8 hours

Reference: <https://docs.microsoft.com/en-us/mem/intune/configuration/device-profile-troubleshoot>

NEW QUESTION 33

- (Exam Topic 4)

You manage 1.000 devices by using Microsoft Intune. You review the Device compliance trends report. For how long will the report display trend data?

- A. 30 days
- B. 60 days
- C. 90 days
- D. 365 days

Answer: B

Explanation:

The Device compliance trends report shows the number of devices that are compliant, noncompliant, and not evaluated over time. The report displays trend data for the last 60 days by default, but you can change the time range to view data for the last 7, 14, or 30 days as well. The report does not show data for more than 60 days. References: [Device compliance trends report]

NEW QUESTION 38

- (Exam Topic 4)

You have a computer that runs Windows 10 and contains two local users named User1 and User2. You need to ensure that the users can perform the following actions:

- User 1 must be able to adjust the date and time.
- User2 must be able to clear Windows logs.

The solution must use the principle of least privilege.

To which group should you add each user? To answer, drag the appropriate groups to the correct users. Each group may be used once, more than once, or not at all. You may need to drag the split bar between panes or scroll to view content.

NOTE: Each correct selection is worth one point.

Groups

Administrators

Event Log Readers

Performance Log Users

Power Users

System Managed Accounts Group

Answer Area

User1:

User2:

- A. Mastered
- B. Not Mastered

Answer: A

Explanation:

Groups

Administrators

Event Log Readers

Performance Log Users

Power Users

System Managed Accounts Group

Answer Area

User1: Administrators

User2: Event Log Readers

NEW QUESTION 39

- (Exam Topic 4)

Your company uses Microsoft Defender for Endpoint Microsoft Defender for Endpoint includes the device groups shown in the following table.

Rank	Name	Members
1	Group1	Tag Equals demo And OS In Windows 10
2	Group2	Tag Equals demo
3	Group3	Domain Equals adatum.com
4	Group4	Domain Equals adatum.com And OS In Windows 10
5	Group5	Name starts with COMP
Last	Ungrouped machines (default)	Not applicable

You onboard a computer to Microsoft Defender for Endpoint as shown in the following exhibit.

computer1

Actions ▾

Domain: adatum.com  
OS: Windows10 64-bit (Build 17134)  
[Machine IP addresses >](#)

What is the effect of the Microsoft Defender for Endpoint configuration? To answer, select the appropriate options in the answer area.  
NOTE: Each correct selection is worth one point.

Answer Area

Computer1 will be a member of:

Group3 only  
Group4 only  
Grou5 only  
Group3, Group4, and Group5 only

If you add the tag demo to Computer1, Computer1 will be a member of:

Group1 only  
Group2 only  
Group1 and Group2 only  
Group1, Group2, Group3, Group4, and Group5

- A. Mastered
- B. Not Mastered

Answer: A

Explanation:

Answer Area

Computer1 will be a member of:

Group3 only  
Group4 only  
Grou5 only  
Group3, Group4, and Group5 only

If you add the tag demo to Computer1, Computer1 will be a member of:

Group1 only  
Group2 only  
Group1 and Group2 only  
Group1, Group2, Group3, Group4, and Group5

NEW QUESTION 42

- (Exam Topic 4)  
You have a Microsoft 365 E5 subscription that contains the devices shown in the following table. All devices have Microsoft Edge installed. From the Microsoft Intune admin center, you create a Microsoft You need to apply Edge1 to all the supported devices. To which devices should you apply Edge1?

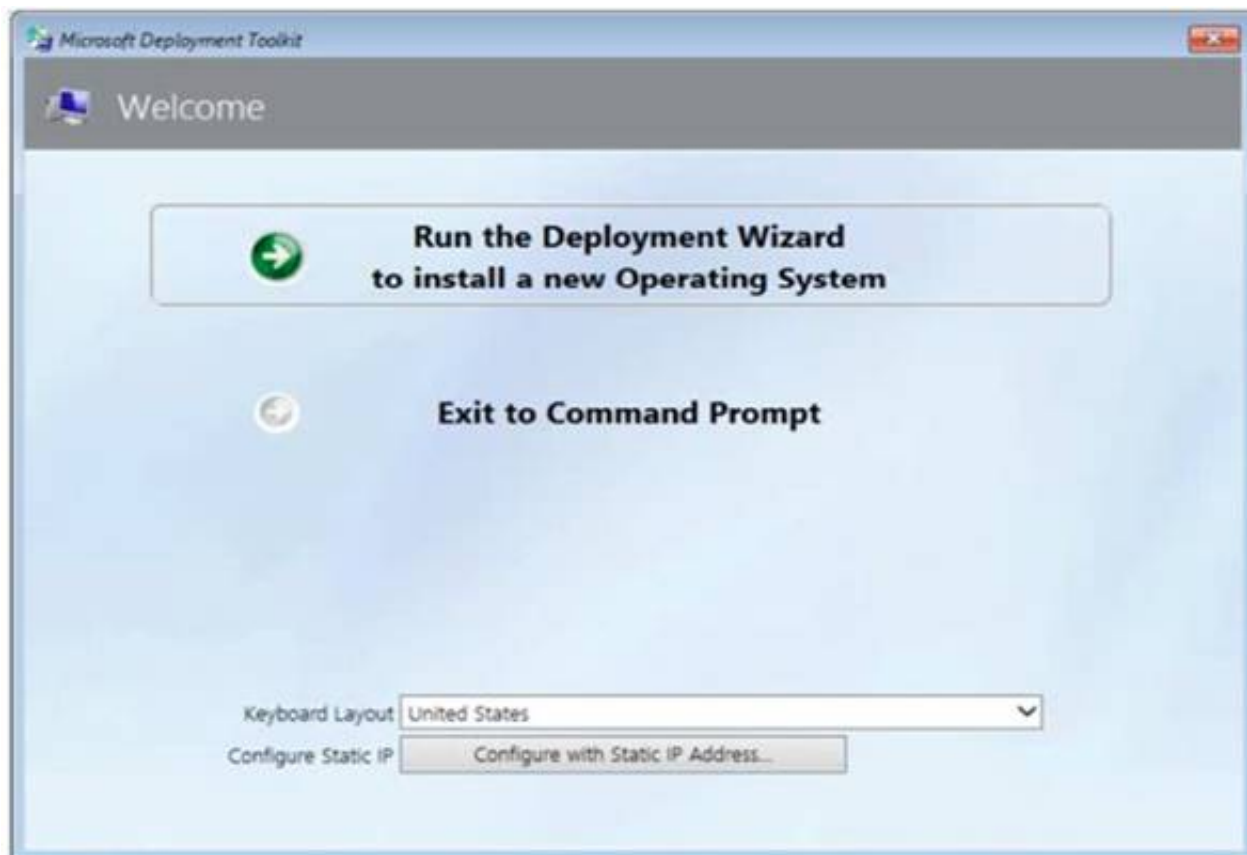
- A. Device1 only
- B. Device1 and Device2 only
- C. Device1, Device2, and Device3 only
- D. Device1, Device2, and Device4 only
- E. Device1, Device2, Device3, and Device4

Answer: E

NEW QUESTION 44

- (Exam Topic 4)  
You have a Microsoft Deployment Toolkit (MDT) server named MDT1. When computers start from the LiteTouchPE\_x64.iso image and connect to MDT1. the welcome screen appears as shown In the following exhibit.





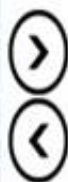
You need to prevent the welcome screen from appearing when the computers connect to MDT1.

Which three actions should you perform in sequence? To answer move the appropriate actions from the list of actions to the answer area and arrange them in the correct order.

**Actions**

**Answer Area**

Modify the CustomSettings.ini file.
Update the deployment share.
Modify the Bootstrap.ini file.
Replace the ISO image.
Modify the task sequence.



- A. Mastered
- B. Not Mastered

**Answer:** A

**Explanation:**

Box 1: Modify the Bootstrap.ini file.

Add this to your bootstrap.ini file and then update the deployment share and use the new boot media created in that process:

SkipBDDWelcome=YES

Box 2: Modify the CustomSettings.ini file. SkipBDDWelcome

Indicates whether the Welcome to Windows Deployment wizard page is skipped.

For this property to function properly it must be configured in both CustomSettings.ini and BootStrap.ini. BootStrap.ini is processed before a deployment share (which contains CustomSettings.ini) has been selected.

Box 3: Update the deployment share. Reference:

<https://docs.microsoft.com/en-us/mem/configmgr/mdt/toolkit-reference#table-6-deployment-wizard-pages>

**NEW QUESTION 49**

- (Exam Topic 4)

You have a Microsoft 365 E5 subscription.

You need to download a report that lists all the devices that are NOT enrolled in Microsoft Intune and are assigned an app protection policy.

What should you select in the Microsoft Endpoint Manager admin center?

- A. App
- B. and then App protection policies
- C. App
- D. and then Monitor
- E. Devices, and then Monitor
- F. Reports, and the Device compliance

**Answer:** A

**Explanation:**

App report: You can search by platform and app, and then this report will provide two different app protection statuses that you can select before generating the report. The statuses can be Protected or Unprotected.

Reference:

<https://docs.microsoft.com/en-us/mem/intune/apps/app-protection-policies-monitor>

**NEW QUESTION 54**

- (Exam Topic 4)

You have a computer named Computed that has Windows 10 installed. You create a Windows PowerShell script named config.ps1.



You need to ensure that config.psl runs after feature updates are installed on Computer5. Which file should you modify on Computer5?

- A. LiteTouch.wsf
- B. SetupConfig.ini
- C. Unattendb\*
- D. Unattend.xml

**Answer: B**

**Explanation:**

SetupConfig.ini is a file that can be used to customize the behavior of Windows Setup during feature updates. You can use this file to specify commands or scripts that run before or after the installation process. To run a PowerShell script after a feature update, you can use the PostOOBE parameter in SetupConfig.ini and specify the path to the script file. References: [SetupConfig.ini reference]

**NEW QUESTION 58**

- (Exam Topic 4)

You have an Azure AD tenant named contoso.com that contains the devices shown in the following table.

Name	Deployed by using Windows Autopilot	Azure AD status	Enrolled in Microsoft Intune
Device1	No	Joined	No
Device2	No	Joined	Yes
Device3	Yes	Joined	Yes

The tenant contains the Azure AD groups shown in the following table.

Name	Member
Group1	Device1, Device2, Device3
Group2	Device2

You add an Autopilot deployment profile as shown in the following exhibit.

## Create profile

Windows PC

☒ Basics
 ☒ Out-of-box experience (OOBE)
 ☒ Assignments
 ☒ Review

### Summary

#### Basics

Name: Profile1  
 Description: --  
 Convert all targeted devices to Autopilot: Yes  
 Device type: Windows PC

#### Out-of-box experience (OOBE)

Deployment mode: Self-Deploying (preview)  
 Join to Azure AD as: Azure AD joined  
 Skip AD connectivity check (preview): No

#### Language (Region)

Operating system default

Automatically configure keyboard: No  
 Microsoft Software License Terms: Hide  
 Privacy settings: Hide  
 Hide change account options: Hide  
 User account type: Standard  
 Allow pre-provisioned deployment: No  
 Apply device name template: No

#### Assignments

Included groups: Group1  
 Excluded groups: Group2

For each of the following statements, select Yes if the statement is true. Otherwise, select No.

You have an Azure AD tenant named contoso.com that contains the devices shown in the following table.



Name	Deployed by using Windows Autopilot	Azure AD status	Enrolled in Microsoft Intune
Device1	No	Joined	No
Device2	No	Joined	Yes
Device3	Yes	Joined	Yes

The tenant contains the Azure AD groups shown in the following table.

**Answer Area**

Statements	Yes	No
If you reset Device1, the device will be deployed by using Autopilot.	<input type="radio"/>	<input type="radio"/>
If you reset Device2, the device will be deployed by using Autopilot.	<input type="radio"/>	<input type="radio"/>
If you restart Device3, the device will be deployed by using Autopilot.	<input type="radio"/>	<input type="radio"/>

- A. Mastered  
 B. Not Mastered

**Answer:** A

**Explanation:**

**Answer Area**

Statements	Yes	No
If you reset Device1, the device will be deployed by using Autopilot.	<input type="radio"/>	<input checked="" type="radio"/>
If you reset Device2, the device will be deployed by using Autopilot.	<input type="radio"/>	<input checked="" type="radio"/>
If you restart Device3, the device will be deployed by using Autopilot.	<input checked="" type="radio"/>	<input type="radio"/>

#### NEW QUESTION 62

- (Exam Topic 4)

You have an Azure Active Directory Premium Plan 2 subscription that contains the users shown in the following table.

Name	Member of	Assigned license
User1	Group1	Enterprise Mobility + Security E5
User2	Group2	Enterprise Mobility + Security E5

You purchase the devices shown in the following table.

Name	Type
Device1	Windows 10
Device2	Android

You configure automatic mobile device management (MDM) and mobile application management (MAM) enrollment by using the following settings:

- MDM user scope: Group1
- MAM user scope: Group2

For each of the following statements, select Yes if the statement is true. Otherwise, select No. NOTE: Each correct selection is worth one point.

Statements	Yes	No
User1 can enroll Device1 in Intune by using automatic enrollment.	<input type="radio"/>	<input type="radio"/>
User1 can enroll Device2 in Intune by using automatic enrollment.	<input type="radio"/>	<input type="radio"/>
User2 can enroll Device1 in Intune by using automatic enrollment.	<input type="radio"/>	<input type="radio"/>

- A. Mastered  
 B. Not Mastered

**Answer:** A

**Explanation:**

**Statements**

User1 can enroll Device1 in Intune by using automatic enrollment.

**Yes**

☒

**No**

☐

User1 can enroll Device2 in Intune by using automatic enrollment.

☐☒

User2 can enroll Device1 in Intune by using automatic enrollment.

☐☒

**NEW QUESTION 66**

- (Exam Topic 4)

You have following types of devices enrolled in Microsoft Intune:

- Windows 10
- Android
- iOS

For which types of devices can you create VPN profiles in Microsoft Intune admin center?

- A. Windows 10 only
- B. Windows 10 and Android only
- C. Windows 10 and iOS only
- D. Android and iOS only
- E. Windows 10, Android, and iOS

**Answer: E**

**NEW QUESTION 67**

- (Exam Topic 4)

Your company has 200 computers that run Windows 10. The computers are managed by using Microsoft Intune. Currently, Windows updates are downloaded without using Delivery Optimization. You need to configure the computers to use Delivery Optimization. What should you create in Intune?

- A. a device compliance policy
- B. a Windows 10 update ring
- C. a device configuration profile
- D. an app protection policy

**Answer: C**

**NEW QUESTION 70**

- (Exam Topic 4)

You are creating a device configuration profile in Microsoft Intune. You need to configure specific OMA-URI settings in the profile. Which profile type template should you use?

- A. Device restrictions (Windows 10 Team)
- B. Identity protection
- C. Custom
- D. Device restrictions

**Answer: C**

**NEW QUESTION 74**

- (Exam Topic 4)

You have a Microsoft 365 E5 subscription and 100 computers that run Windows 10.

You need to deploy Microsoft Office Professional Plus 2019 to the computers by using Microsoft Office Deployment Tool (ODT).

What should you use to create a customization file for ODT?

- A. the Microsoft 365 admin center
- B. the Microsoft Intune admin center
- C. the Microsoft Purview compliance portal
- D. the Microsoft 365 Apps admin center

**Answer: D**

**NEW QUESTION 78**

- (Exam Topic 4)

You have a Microsoft 365 E5 subscription that contains 1,000 Windows 11 devices. All the devices are enrolled in Microsoft Intune.

You plan to integrate Intune with Microsoft Defender for Endpoint.

You need to establish a service-to-service connection between Intune and Defender for Endpoint. Which settings should you configure in the Microsoft Endpoint Manager admin center?

- A. Connectors and tokens
- B. Premium add-ons
- C. Microsoft Tunnel Gateway

D. Tenant enrollment

**Answer:** A

**Explanation:**

Microsoft Defender for Endpoint – Important Service and Endpoint Settings You Should Configure Right Now.

As a prerequisite, however, head to tenant administration > connectors and tokens > Microsoft Defender for Endpoint and confirm the connection is enabled. You previously set this up in the advanced settings of Microsoft 365 Defender.

Reference: <https://petri.com/microsoft-defender-for-endpoint-which-settings-configure-right-now/>

**NEW QUESTION 81**

- (Exam Topic 4)

You have a Hyper-V host. The host contains virtual machines that run Windows 10 as shown in following table.

Name	Generation	Virtual TPM	Virtual processors	Memory
VM1	1	No	4	16 GB
VM2	2	Yes	2	4 GB
VM3	2	Yes	1	8 GB

Which virtual machines can be upgraded to Windows 11?

- A. VM1 only
- B. VM2 only
- C. VM2 and VM3 only
- D. VM1.VM2. andVM3

**Answer:** C

**Explanation:**

Windows 11 has certain hardware requirements that must be met in order to upgrade from Windows 10. Some of these requirements are as follows:

- A processor with at least 1 GHz clock speed and 2 cores.
- A system firmware that supports UEFI and Secure Boot.
- A Trusted Platform Module (TPM) version 2.0 or higher.
- At least 4 GB
- At least 64 GB

of system memory (RAM). of storage space.

In this scenario, the virtual machines that run Windows 10 have the following specifications:

- VM3 is a generation 2 virtual machine with a virtual TPM, 1 virtual processor, and 8 GB of memory.

VM1 cannot be upgraded to Windows 11 because it does not have a virtual TPM and it is not a generation 2 virtual machine. Generation 1 virtual machines do not support UEFI and Secure Boot, which are required for Windows 11. VM2 and VM3 can be upgraded to Windows 11 because they have a virtual TPM and they are generation 2 virtual machines. They also meet the minimum requirements for processor speed, cores, memory, and storage space.

**NEW QUESTION 84**

- (Exam Topic 4)

You have a Microsoft 365 E5 subscription that contains 500 macOS devices enrolled in Microsoft Intune. You need to ensure that you can apply Microsoft Defender for Endpoint antivirus policies to the macOS devices. The solution must minimize administrative effort.

What should you do?

- A. From the Microsoft Endpoint Manager admin center, create a configuration profile.
- B. From the Microsoft Endpoint Manager admin center, create a security baseline.
- C. Onboard the macOS devices to the Microsoft 365 compliance center.
- D. Install Defender for Endpoint on the macOS devices.

**Answer:** D

**Explanation:**

Just install, and use Defender for Endpoint on Mac. Reference:

<https://docs.microsoft.com/en-us/microsoft-365/security/defender-endpoint/microsoft-defender-endpoint-mac>

**NEW QUESTION 85**

- (Exam Topic 4)

You have a Microsoft 365 subscription.

You plan to enroll devices in Microsoft Endpoint Manager that have the platforms and versions shown in the following table.

Platform	Version
Android	8, 9
iOS	11, 12

You need to configure device enrollment to meet the following requirements:

- Ensure that only devices that have approved platforms and versions can enroll in Endpoint Manager.



➤ Ensure that devices are added to Microsoft Azure Active Directory (Azure AD) groups based on a selection made by users during the enrollment. Which device enrollment setting should you configure for each requirement? To answer, select the appropriate options in the answer area.  
NOTE: Each correct selection is worth one point.

Answer Area

Ensure that only devices that have approved platforms and versions can enroll in Endpoint Manager:

Android enrollment

Apple enrollment

Corporate device identifiers

Device categories

Enrollment restrictions

Windows enrollment

Ensure that devices are added to Azure AD groups based on a selection made by users during enrollment:

Android enrollment

Apple enrollment

Corporate device identifiers

Device categories

Enrollment restrictions

Windows enrollment

- A. Mastered
- B. Not Mastered

Answer: A

**Explanation:**  
A screenshot of a computer Description automatically generated  
Reference:  
<https://docs.microsoft.com/en-us/mem/intune/enrollment/enrollment-restrictions-set> <https://docs.microsoft.com/en-us/mem/intune/enrollment/device-group-mapping>

NEW QUESTION 90

- (Exam Topic 4)  
Your network contains an Active Directory domain.  
You install the Microsoft Deployment Toolkit (MDT) on a server. You have a custom image of Windows 11.  
You need to deploy the image to 100 devices by using MDT.  
Which three actions should you perform in sequence? To answer, move answer area and arrange them in the correct order.

Actions

Enable multicast.

Install Windows Deployment Services (WDS).

Create a deployment share.

Add the Windows 11 image.

Create a task sequence.

Answer Area

- A. Mastered
- B. Not Mastered

Answer: A

**Explanation:**  
To deploy the Windows 11 image to 100 devices by using MDT, you should perform the following three actions in sequence:  
➤ Install Windows Deployment Services (WDS) on the server. WDS is a role that enables you to deploy Windows operating systems over the network by using PXE boot and multicast technologies. You need to install WDS before you can enable multicast and configure the boot images for MDT. You can install WDS by using the Server Manager or PowerShell1.  
➤ Create a deployment share on the server. A deployment share is a folder that contains the MDT files, scripts, applications, drivers, operating systems, and task sequences that you use to deploy Windows. You need to create a deployment share by using the MDT Deployment Workbench2.  
➤ Add the Windows 11 image and create a task sequence in the deployment share. An image is a file that contains a snapshot of a Windows installation. A task sequence is a set of steps that MDT executes to install Windows and configure the settings. You need to add the Windows 11 image by importing it from a source folder or a WIM file, and create a task sequence by using a template or customizing your own3.  
These are the basic steps to prepare for deploying Windows 11 with MDT. For more details and guidance, you can refer to the web search results I found for you by using search\_web("deploy Windows 11 image with MDT").

NEW QUESTION 91

- (Exam Topic 4)  
You have a Microsoft 365 tenant that uses Microsoft Intune and contains the devices shown in the following table.

Name	Platform
Device1	Windows 10
Device2	macOS

In Microsoft Intune Endpoint security, you need to configure a disk encryption policy for each device. Which encryption type should you use for each device, and which role-based access control (RBAC) role in Intune should you use to manage the encryption keys? To answer, select the appropriate options in the answer area.  
NOTE: Each correct selection is worth one point.

Answer Area

Device1:

FileVault  
Cryptsetup  
Encrypting File System (EFS)  
BitLocker Drive Encryption (BitLocker)

Device2:

FileVault  
Cryptsetup  
Encrypting File System (EFS)  
BitLocker Drive Encryption (BitLocker)

RBAC role:

Help Desk Operator  
Application Manager  
Intune Role Administrator  
Policy and Profile Manager

- A. Mastered
- B. Not Mastered

Answer: A

Explanation:

Graphical user interface, text, application Description automatically generated

#### NEW QUESTION 94

- (Exam Topic 4)

You have a Microsoft Deployment Toolkit (MDT) solution that is used to manage Windows 11 deployment tasks. MDT contains the operating system images shown in the following table.

Name	Description
Image1.wim	Custom-built Windows 10 image that has preinstalled custom apps
Image2.wim	Custom-built Windows 10 image without apps
Install.wim	Default Windows 10 image

You need to perform a Windows 11 in-place upgrade on several computers that run Windows 10. From the Deployment Workbench, you open the New Task Sequence Wizard.

You need to identify which task sequence template and which operating system image to use for the task sequence. The solution must minimize administrative effort.

What should you identify? To answer, select the appropriate options in the answer area.

NOTE: Each correct selection is worth one point.

Answer Area

Task sequence template:

Standard Client Task Sequence  
Standard Client Replace Task Sequence  
Standard Client Upgrade Task Sequence

Operating system image:

Image1.wim  
Image2.wim  
Install.wim

- A. Mastered  
B. Not Mastered

**Answer:** A

**Explanation:**

Box 1: Standard Client Upgrade Task Sequence

Use Template: Standard Client Upgrade Task Sequence

In-place upgrade is the preferred method to use when migrating from Windows 10 to a later release of Windows 10, and is also a preferred method for upgrading from Windows 7 or 8.1 if you do not plan to significantly change the device's configuration or applications. MDT includes an in-place upgrade task sequence template that makes the process really simple.

Box 2: Install.wim

In-place upgrade differs from computer refresh in that you cannot use a custom image to perform the in-place upgrade. I

Reference:

<https://docs.microsoft.com/en-us/windows/deployment/deploy-windows-mdt/upgrade-to-windows-10-with-the>

**NEW QUESTION 97**

- (Exam Topic 4)

Your company uses Microsoft Intune to manage devices.

You need to ensure that only Android devices that use Android work profiles can enroll in Intune. Which two configurations should you perform in the device enrollment restrictions? Each correct answer presents part of the solution.

NOTE Each correct selection is worth one point.

- A. From Platform Settings, set Android device administrator Personally Owned to Block.  
B. From Platform Settings, set Android Enterprise (work profile) to Allow.  
C. From Platform Settings, set Android device administrator Personally Owned to Allow  
D. From Platform Settings, set Android device administrator to Block.

**Answer:** AB

**Explanation:**

To ensure that only Android devices that use Android work profiles can enroll in Intune, you need to perform two configurations in the device enrollment restrictions. First, you need to set Android device administrator Personally Owned to Block. This prevents users from enrolling personal Android devices that use device administrator mode. Second, you need to set Android Enterprise (work profile) to Allow. This allows users to enroll corporate-owned or personal Android devices that use work profiles. References: <https://docs.microsoft.com/en-us/mem/intune/enrollment/enrollment-restrictions-set>

**NEW QUESTION 100**

- (Exam Topic 4)

You have a server named Server1 and computers that run Windows 8.1. Server1 has the Microsoft Deployment Toolkit (MDT) installed.

You plan to upgrade the Windows 8.1 computers to Windows 10 by using the MDT deployment wizard. You need to create a deployment share on Server1.

What should you do on Server1, and what are the minimum components you should add to the MDT deployment share? To answer, select the appropriate options in the answer area.

NOTE: Each correct selection is worth one point.

**Answer Area**

On Server1:	<div><div>Import the Deployment Image Servicing and Management (DISM) PowerShell module.</div><div>Import the WindowsAutopilotIntune Windows PowerShell module.</div><div>Install the Windows Assessment and Deployment Kit (Windows ADK).</div><div>Install the Windows Deployment Services server role.</div></div>
Add to the MDT deployment share:	<div><div>Windows 10 image and package only</div><div>Windows 10 image and task sequence only</div><div>Windows 10 image only</div><div>Windows 10 image, task sequence, and package</div></div>

- A. Mastered  
B. Not Mastered

**Answer:** A

**Explanation:**

Box 1: Install the Windows Deployment Services role. Install and initialize Windows Deployment Services (WDS) On the server:

Open an elevated Windows PowerShell prompt and enter the following command: Install-WindowsFeature -Name WDS -IncludeManagementTools WDSUTIL /Verbose /Progress /Initialize-Server /Server:MDT01 /RemInst:"D:\RemoteInstall" WDSUTIL /Set-Server /AnswerClients:All

Box 2: Windows 10 image and task sequence only Create the reference image task sequence

In order to build and capture your Windows 10 reference image for deployment using MDT, you will create a task sequence.

Reference:

<https://docs.microsoft.com/en-us/windows/deployment/deploy-windows-mdt/prepare-for-windows-deployment>

<https://docs.microsoft.com/en-us/windows/deployment/deploy-windows-mdt/create-a-windows-10-reference-im>

**NEW QUESTION 105**

- (Exam Topic 4)



You have the Microsoft Deployment Toolkit (MDT) installed in three sites as shown in the following table.

MDT instance name	Site	Default gateway
MDT1	New York	10.1.1.0/24
MDT2	London	10.5.5.0/24
MDT3	Dallas	10.4.4.0/24

You use Distributed File System (DFS) Replication to replicate images in a share named Production. You configure the following settings in the Bootstrap.ini file.

[Settings]

Priority=DefaultGateway, Default

[DefaultGateway]

10.1.1.1=NewYork

10.5.5.1=London

[NewYork]

DeployRoot=\\MDT1\Production\$

[London]

DeployRoot=\\MDT2\Production\$

KeyboardLocale=en-gb -

[Default]

DeployRoot=\\MDT3\Production\$

KeyboardLocale=en-us -

You plan to deploy Windows 10 to the computers shown in the following table.

Name	IP address
LT1	10.1.1.240
DT1	10.5.5.115
TB1	10.2.2.193

For each of the following statements, select Yes if the statement is true. Otherwise, select No.

NOTE: Each correct selection is worth one point.

### Statements

Yes

No

TB1 will download the image from MDT3.

☐
☐

DT1 will have a KeyboardLocale of en-gb.

☐
☐

LT1 will download the image from MDT1.

☐
☐

- A. Mastered
- B. Not Mastered

Answer: A

Explanation:

### Statements

Yes

No

TB1 will download the image from MDT3.

☐
☒

DT1 will have a KeyboardLocale of en-gb.

☒
☐

LT1 will download the image from MDT1.

☒
☐



#### NEW QUESTION 108

- (Exam Topic 3)

You need to prepare for the deployment of the Phoenix office computers. What should you do first?

- A. Extract the hardware ID information of each computer to a CSV file and upload the file from the Devices settings in Microsoft Store for Business.
- B. Generalize the computers and configure the Mobility (MDM and MAM) settings from the Azure Active Directory blade in the Azure portal.
- C. Generalize the computers and configure the Device settings from the Azure Active Directory blade in the Azure portal.
- D. Extract the hardware ID information of each computer to an XLSX file and upload the file from the Devices settings in Microsoft Store for Business.

**Answer:** A

#### Explanation:

References:

<https://docs.microsoft.com/en-us/microsoft-store/add-profile-to-devices#manage-autopilot-deployment-profiles>

#### NEW QUESTION 113

- (Exam Topic 3)

What is the maximum number of devices that User1 and User2 can enroll in Intune? To answer, select the appropriate options in the answer area.

NOTE: Each correct selection is worth one point.

**User1 can enroll a maximum of:**

<input type="checkbox"/>	5 devices
<input type="checkbox"/>	10 devices
<input type="checkbox"/>	15 devices
<input type="checkbox"/>	1,000 devices
<input type="checkbox"/>	An unlimited number of devices

**User2 can enroll a maximum of:**

<input type="checkbox"/>	5 devices
<input type="checkbox"/>	10 devices
<input type="checkbox"/>	15 devices
<input type="checkbox"/>	1,000 devices
<input type="checkbox"/>	An unlimited number of devices

A. Mastered

B. Not Mastered

**Answer:** A

#### Explanation:

**User1 can enroll a maximum of:**

<input checked="" type="checkbox"/>	5 devices
<input checked="" type="checkbox"/>	10 devices
<input checked="" type="checkbox"/>	15 devices
<input type="checkbox"/>	1,000 devices
<input type="checkbox"/>	An unlimited number of devices

**User2 can enroll a maximum of:**

<input type="checkbox"/>	5 devices
<input checked="" type="checkbox"/>	10 devices
<input checked="" type="checkbox"/>	15 devices
<input type="checkbox"/>	1,000 devices
<input type="checkbox"/>	An unlimited number of devices

#### NEW QUESTION 117

- (Exam Topic 3)

You need to meet the technical requirements for the iOS devices. Which object should you create in Intune?

- A. A compliance policy
- B. An app protection policy
- C. A Deployment profile
- D. A device configuration profile

**Answer:** D

#### Explanation:

References:

<https://docs.microsoft.com/en-us/intune/device-restrictions-configure> <https://docs.microsoft.com/en-us/intune/device-restrictions-ios>

#### NEW QUESTION 119

- (Exam Topic 3)

You need to meet the technical requirements for the new HR department computers.

How should you configure the provisioning package? To answer, select the appropriate options in the answer area.

NOTE: Each correct selection is worth one point.

Specify ComputerName as:

<input type="checkbox"/>	"HR"+ RAND(4)
<input type="checkbox"/>	"HumanResources-" + RAND(????)
<input type="checkbox"/>	HR-%RAND:4%
<input type="checkbox"/>	HR-????
<input type="checkbox"/>	HumanResources-%RAND:4%

Specify AccountOU as:

<input type="checkbox"/>	CN=Computers, CN=HR, DC=Contoso, DC=com
<input type="checkbox"/>	Computers/HumanResources/Contoso.com
<input type="checkbox"/>	Contoso.com/HR/Computers
<input type="checkbox"/>	OU=Computers, OU=HR, DC=Contoso, DC=com

- A. Mastered
- B. Not Mastered

**Answer:** A

**Explanation:**

Reference:

<https://docs.microsoft.com/en-us/windows/configuration/wcd/wcd-accounts>

#### NEW QUESTION 122

- (Exam Topic 2)

What should you configure to meet the technical requirements for the Azure AD-joined computers?

- A. Windows Hello for Business from the Microsoft Intune blade in the Azure portal.
- B. The Accounts options in an endpoint protection profile.
- C. The Password Policy settings in a Group Policy object (GPO).
- D. A password policy from the Microsoft Office 365 portal.

**Answer:** A

**Explanation:**

References:

<https://docs.microsoft.com/en-us/windows/security/identity-protection/hello-for-business/hello-manage-inorgani>

#### NEW QUESTION 124

- (Exam Topic 2)

What should you upgrade before you can configure the environment to support co-management?

- A. the domain functional level
- B. Configuration Manager
- C. the domain controllers
- D. Windows Server Update Services (WSUS)

**Answer:** B

**Explanation:**

References:

<https://docs.microsoft.com/en-us/sccm/comanage/tutorial-co-manage-clients>

#### NEW QUESTION 128

- (Exam Topic 2)

You need to capture the required information for the sales department computers to meet the technical requirements.

Which Windows PowerShell command should you run first?

- A. Install-Module WindowsAutoPilotIntune
- B. Install-Script Get-WindowsAutoPilotInfo
- C. Import-AutoPilotCSV
- D. Get-WindowsAutoPilotInfo

**Answer:** B

**Explanation:**

References:

<https://docs.microsoft.com/en-us/windows/deployment/windows-autopilot/existing-devices>

"This topic describes how to convert Windows 7 or Windows 8.1 domain-joined computers to Windows 10 devices joined to either Azure Active Directory or Active

Directory (Hybrid Azure AD Join) by using Windows Autopilot"

#### NEW QUESTION 132

- (Exam Topic 2)

What should you use to meet the technical requirements for Azure DevOps?

- A. An app protection policy
- B. Windows Information Protection (WIP)
- C. Conditional access
- D. A device configuration profile

**Answer:** C

#### Explanation:

References:

<https://docs.microsoft.com/en-us/azure/devops/organizations/accounts/manage-conditional-access?view=azure-devops>

#### NEW QUESTION 133

- (Exam Topic 2)

You need to resolve the performance issues in the Los Angeles office.

How should you configure the update settings? To answer, select the appropriate options in the answer area. NOTE: Each correct selection is worth one point.

#### Answer Area

**Change Delivery Optimization  
download mode to:**

<input type="checkbox"/>
<b>Bypass mode</b>
<b>HTTP blended with internet peering</b>
<b>HTTP blended with peering behind same NAT</b>
<b>Simple download mode with no peering</b>

**Update Active Hours Start to:**

<input type="checkbox"/>
<b>10 AM</b>
<b>11 AM</b>
<b>10 PM</b>
<b>11 PM</b>

**Update Active Hours End to:**

<input type="checkbox"/>
<b>10 AM</b>
<b>11 AM</b>
<b>10 PM</b>
<b>11 PM</b>

- A. Mastered
- B. Not Mastered

**Answer:** A

#### Explanation:

A screenshot of a computer Description automatically generated with low confidence

Reference:

<https://docs.microsoft.com/en-us/windows/deployment/update/waas-delivery-optimization> <https://2pintsoftware.com/delivery-optimization-dl-mode/>

#### NEW QUESTION 134

- (Exam Topic 1)

Which user can enroll Device6 in Intune?

- A. User4 and User2 only
- B. User4 and User 1 only
- C. User1, User2, User3, and User4
- D. User4. User Land User2 only

**Answer:** B

#### NEW QUESTION 136

- (Exam Topic 1)

For each of the following statements, select Yes if the statement is true. Otherwise, select No.

NOTE: Each correct selection is worth one point.

Statements	Yes	No
User1 can create a file named D:\Folder1\file1.txt on Device4 by using Notepad.	<input type="radio"/>	<input type="radio"/>
User2 can remove D:\Folder1 from the list of protected folders on Device2.	<input type="radio"/>	<input type="radio"/>
User3 can create a file named C:\Users\User3\Desktop\file1.txt on Device2 by running a custom Windows PowerShell script.	<input type="radio"/>	<input type="radio"/>

- A. Mastered
- B. Not Mastered

Answer: A

Explanation:  
A screenshot of a computer Description automatically generated with medium confidence

NEW QUESTION 140  
- (Exam Topic 1)  
Which devices are registered by using the Windows Autopilot deployment service?

- A. Device1 only
- B. Device3 only
- C. Device1 and Device3 only
- D. Device1, Device2, and Device3

Answer: C

Explanation:  
Scenario: Windows Autopilot Configuration Assignments  
Included groups: Group1  
Excluded groups: Group2 Device1 is member of Group1.  
Device2 is member of Group1 and member of Group2. Device3 is member of Group1.  
Group1 and Group2 have a Membership type of Assigned.  
Exclusion takes precedence over inclusion in the following same group type scenarios. Reference: https://learn.microsoft.com/en-us/mem/intune/apps/apps-inc-exl-assignments

NEW QUESTION 144  
- (Exam Topic 1)  
You implement the planned changes for Connection1 and Connection2  
How many VPN connections will there be for User1 when the user signs in to Device 1 and Devke2? To answer select the appropriate options in the answer area.  
NOTE; Each correct selection is worth one point.

Answer Area

Device1:

1

2

3

4

5

Device2:

1

2

3

4

5

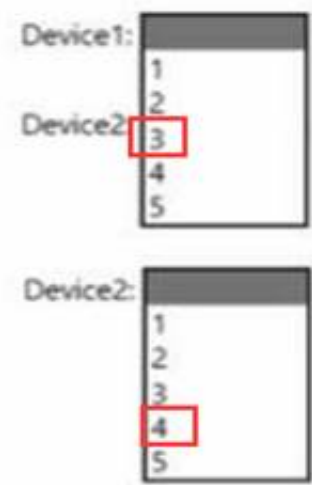
- A. Mastered
- B. Not Mastered

Answer: A

Explanation:



Answer Area



NEW QUESTION 147

- (Exam Topic 1)  
For each of the following statements, select Yes if the statement is true. Otherwise, select No.  
NOTE: Each correct selection is worth one point.

Statements	Yes	No
Device1 is marked as compliant.	<input type="radio"/>	<input type="radio"/>
Device4 is marked as compliant.	<input type="radio"/>	<input type="radio"/>
Device5 is marked as compliant.	<input type="radio"/>	<input type="radio"/>

- A. Mastered
- B. Not Mastered

Answer: A

Explanation:  
Text Description automatically generated

NEW QUESTION 151

- (Exam Topic 1)  
For each of the following statements, select Yes if the statement is true. Otherwise, select No. NOTE: Each correct selection is worth one point.

Answer Area

Statements	Yes	No
If User1 adds a shortcut to the desktop of Device1, when User1 signs in to Device3, the same shortcut will appear on the desktop.	<input type="radio"/>	<input type="radio"/>
If User1 sets the desktop background to blue on Device2, when User1 signs in to Device4, the desktop background will be blue.	<input type="radio"/>	<input type="radio"/>
If User2 increases the size of the font in the command prompt of Device2, when User2 signs in to Device3, the command prompt will show the increased font size.	<input type="radio"/>	<input type="radio"/>

- A. Mastered
- B. Not Mastered

Answer: A

Explanation:  
Text, letter Description automatically generated

NEW QUESTION 156

- (Exam Topic 4)  
You have a Microsoft 365 E5 subscription that contains 100 iOS devices enrolled in Microsoft Intune. You need to ensure that notifications of iOS updates are deferred for 30 days after the updates are released. What should you create?

- A. a device configuration profile based on the Device features template
- B. a device configuration profile based on the Device restrictions template
- C. an update policy for iOS/iPadOS
- D. an iOS app provisioning profile

Answer: C

**Explanation:**

Manage iOS/iPadOS software update policies in Intune, delay visibility of software updates.

When you use update policies for iOS, you might have need to delay visibility of an iOS software update. Reasons to delay visibility include:

Prevent users from updating the OS manually

To deploy an older update while preventing users from installing a more recent one

To delay visibility, deploy a device restriction template that configures the following settings: Defer software updates = Yes

This doesn't affect any scheduled updates. It represents days before software updates are visible to end users after release.

Delay default visibility of software updates = 1 to 90 90 days is the maximum delay that Apple supports.

Reference: https://docs.microsoft.com/en-us/mem/intune/protect/software-updates-ios

**NEW QUESTION 157**

- (Exam Topic 4)

Your company has an Azure AD tenant named contoso.com that contains several Windows 10 devices. When you join new Windows 10 devices to contoso.com, users are prompted to set up a four-digit pin. You need to ensure that the users are prompted to set up a six-digit pin when they join the Windows 10 devices to contoso.com.

Solution: From the Microsoft Entra admin center, you configure automatic mobile device management (MDM) enrollment. From the Microsoft Intune admin center, you create and assign a device restrictions profile.

Does this meet the goal?

A. Yes

B. No

Answer: B

**NEW QUESTION 161**

- (Exam Topic 4)

You have computer that run Windows 10 and connect to an Azure Log Analytics workspace. The workspace is configured to collect all available events from Windows event logs. The computers have the logged events shown in the following table.

Event ID	Log	Type	Computer
1	Application	Success	Computer1
2	System	Information	Computer1
3	Security	Audit Success	Computer2
4	System	Error	Computer2

Which events are collected in the Log Analytics workspace?

A. 1 only

B. 2 and 3 only

C. 1 and 3 only

D. 1, 2, and 4 on

E. 1, 2, 3, and 4

Answer: E

**Explanation:**

All events from Windows event logs are collected in the Log Analytics workspace, regardless of the event level or source. Therefore, events 1, 2, 3, and 4 are all collected in the workspace. References: https://docs.microsoft.com/en-us/azure/azure-monitor/agents/data-sources-windows-events

**NEW QUESTION 166**

- (Exam Topic 4)

You have an Azure Active Directory (Azure AD) tenant named contoso.com that contains a user named User1. User1 has a user principal name (UPN) of user1@contoso.com.

You join a Windows 10 device named Client1 to contoso.com.

You need to add User1 to the local Administrators group of Client1.

How should you complete the command? To answer, select the appropriate options in the answer area.

NOTE: Each correct selection is worth one point.

**Answer Area**

net accounts

net localgroup

net user

Administrators /add "

AzureAD

CONTOSO

UPN

\user1@contoso.com"

A. Mastered

B. Not Mastered

Answer: A

Explanation:

Answer Area



#### NEW QUESTION 167

- (Exam Topic 4)

You have a Microsoft 365 E5 subscription that contains 10 Android Enterprise devices. Each device has a corporate-owned work profile and is enrolled in Microsoft Intune.

You need to configure the devices to run a single app in kiosk mode.

Which Configuration settings should you modify in the device restrictions profile?

- A. General
- B. Users and Accounts
- C. System security
- D. Device experience

Answer: D

Explanation:

To configure the devices to run a single app in kiosk mode, you need to modify the Device experience settings in the device restrictions profile. You can specify the app package name and activity name for the app that you want to run in kiosk mode. References:

https://docs.microsoft.com/en-us/mem/intune/configuration/device-restrictions-android-for-work#device-experie

#### NEW QUESTION 170

- (Exam Topic 4)

You have an Azure AD tenant that contains the devices shown in the following table. You purchase Windows 11 Enterprise E5 licenses.

Which devices can use Subscription Activation to upgrade to Windows 11 Enterprise?

- A. Device1 only
- B. Device1 and Device2 only
- C. Device1 and Device3 only
- D. Device1, Device2, Device3, and Device4

Answer: B

#### NEW QUESTION 174

- (Exam Topic 4)

You have a Microsoft 365 subscription that uses Microsoft Intune Suite. You use Microsoft Intune to manage devices.

You have a Windows 11 device named Device1 that is enrolled in Intune. Device1 has been offline for 30 days.

You need to remove Device1 from Intune immediately. The solution must ensure that if the device checks in again, any apps and data provisioned by Intune are removed. User-installed apps, personal data, and

OEM-installed apps must be retained.

What should you use?

- A. a Delete action
- B. a Retire action
- C. a Fresh Start action
- D. an Autopilot Reset action

Answer: B

Explanation:

A retire action removes a device from Intune management and removes any apps and data provisioned by Intune. User-installed apps, personal data, and OEM-installed apps are retained. A retire action can be performed on devices that are offline for more than 30 days. References:

https://docs.microsoft.com/en-us/mem/intune/remote-actions/devices-wipe

#### NEW QUESTION 175

- (Exam Topic 4)

You have a Microsoft 365 tenant that uses Microsoft Intune to manage personal and corporate devices. The tenant contains three Windows 10 devices as shown in the following exhibit.

Name	Enabled	OS	Version	Join Type	Owner	MDM	Compliant
LON-CL2	Yes	Windows	10.0.17763.615	Azure AD registered	User2	Microsoft Intune	Yes
LON-CL4	Yes	Windows	10.0.17763.107	Azure AD joined	User1	Microsoft Intune	Yes

How will Intune classify each device after the devices are enrolled in Intune automatically? To answer, select the appropriate options in the answer area.



NOTE: Each correct selection is worth one point.

Answer Area

Identified by Intune as a personal device:

LON-CL2 only

LON-CL4 only

Both LON-CL2 and LON-CL4

Neither LON-CL2 or LON-CL4

Identified by Intune as a corporate device:

LON-CL2 only

LON-CL4 only

Both LON-CL2 and LON-CL4

Neither LON-CL2 or LON-CL4

- A. Mastered
- B. Not Mastered

Answer: A

**Explanation:**  
Table Description automatically generated  
Reference:  
<https://docs.microsoft.com/en-us/azure/active-directory/devices/concept-azure-ad-join> <https://docs.microsoft.com/en-us/azure/active-directory/devices/concept-azure-ad-register>

**NEW QUESTION 179**  
- (Exam Topic 4)  
You have a Microsoft 365 E5 subscription.  
You create an app protection policy for Android devices named Policy1 as shown in the following exhibit.

Home > Apps >

Create policy

Basics

Apps

Data protection

Access requirements

Choose how you want to apply this policy to apps on different devices. Then add at least one app.

Target to apps on all device types

Yes

No

Device types

Unmanaged

Target policy to

All Apps

We'll continue to add managed apps to your policy as they become available in Intune. View a list of apps that will be targeted

Use the drop-down menus to select the answer choice that completes each statement based on the information presented in the graphic.  
NOTE: Each correct selection is worth one point.

To apply Policy1 to an Android device, you must [answer choice].

install the Company Portal app on the device

install the Microsoft Authenticator app on the device

onboard the device to Microsoft Defender for Endpoint

onboard the device to the Microsoft 365 compliance center

When Policy1 is assigned, the policy will apply to [answer choice].

users only

devices only

users and devices

- A. Mastered
- B. Not Mastered

**Answer:** A

**Explanation:**

Box 1: Install the Intune Company Portal app on the device

On Android, Android devices will prompt to install the Intune Company Portal app regardless of which Device type is chosen.

Box 2: Devices only

For Android devices, unmanaged devices are devices where Intune MDM management has not been detected. This includes devices managed by third-party MDM vendors.

Reference:

<https://docs.microsoft.com/en-us/mem/intune/apps/app-protection-policies#app-protection-policies-for-iosipado>

**NEW QUESTION 183**

- (Exam Topic 4)

You have a Microsoft 365 subscription.

You have 10 computers that run Windows 10 and are enrolled in mobile device management (MDM). You need to deploy the Microsoft 36S Apps for enterprise suite to all the computers.

What should you do?

- A. From the Microsoft Intune admin center, create a Windows 10 device profile.
- B. From Azure AD, add an app registration.
- C. From Azure A
- D. add an enterprise application.
- E. From the Microsoft Intune admin center, add an app.

**Answer:** D

**Explanation:**

To deploy Microsoft 365 Apps for enterprise to Windows 10 devices that are enrolled in Intune, you need to add an app of type “Windows 10 app (Win32)” in the Microsoft Intune admin center and configure the app settings. You can then assign the app to groups of users or devices. References:

<https://docs.microsoft.com/en-us/mem/intune/apps/apps-win32-app-management>

**NEW QUESTION 185**

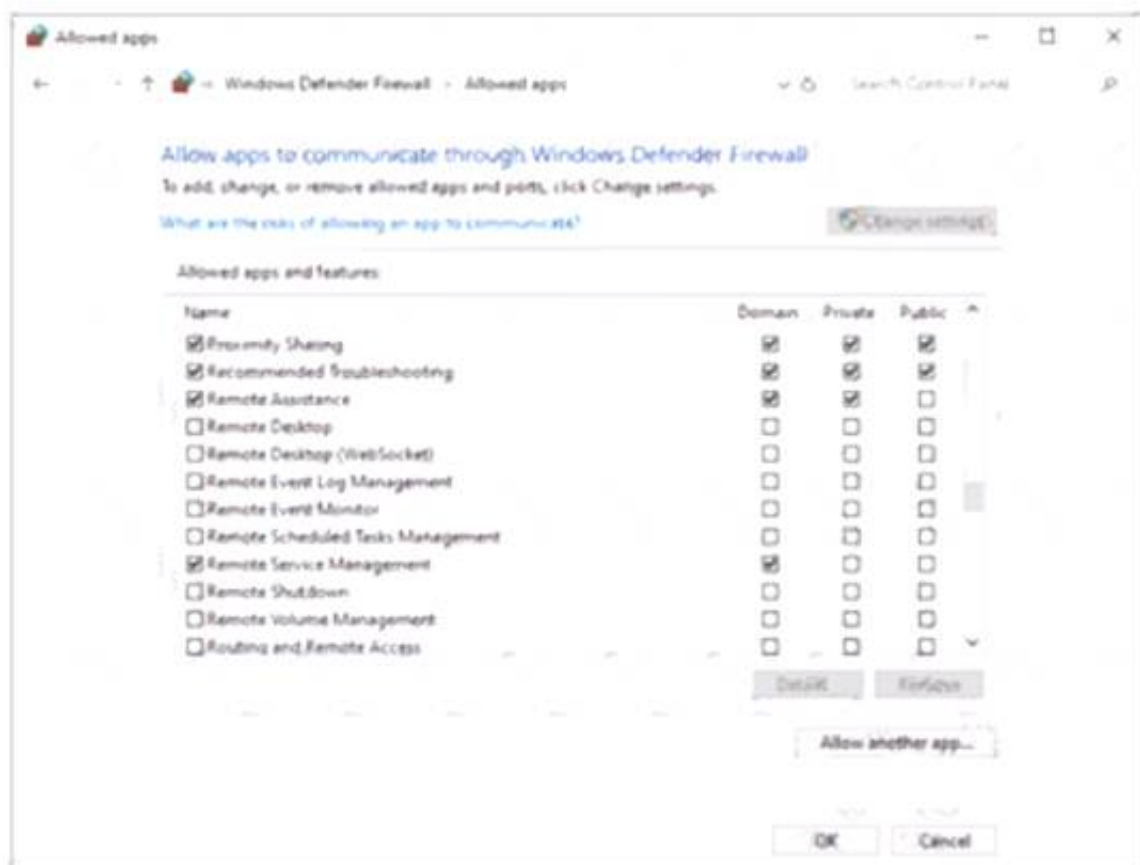
- (Exam Topic 4)

Your network contains an Active Directory domain named adatum.com, a workgroup, and computers that run Windows 10. The computers are configured as shown in the following table.

Name	Member of	Active Windows Defender Firewall profile
Computer1	Adatum.com	Domain
Computer2	Adatum.com	Domain
Computer3	Workgroup	Public

The local Administrator accounts on Computer1, Computer2, and Computer3 have the same user name and password.

On Computer3, Windows Defender Firewall is configured as shown in the following exhibit.



Status	Name	DisplayName
Stopped	RasAuto	Remote Access Auto Connection Manager
Running	RasMan	Remote Access Connection Manager
Stopped	RemoteAccess	Routing and Remote Access
Stopped	RemoteRegistry	Remote Registry
Stopped	RetailDemo	Retail Demo Service
Running	RmSvc	Radio Management Service
Running	RpcEptMapper	RPC Endpoint Mapper
Stopped	RpcLocator	Remote Procedure Call (RPC) Locator
Running	RpcSs	Remote Procedure Call (RPC)

For each of the following statements, select Yes if the statement is true. Otherwise, select No.

**NOTE:** Each correct selection is worth one point.

#### Answer Area

Statements	Yes	No
From Computer2, you can use Disk Management to manage Computer1 remotely.	<input type="radio"/>	<input checked="" type="radio"/>
From Computer2, you can use Registry Editor to edit the registry of Computer1 remotely.	<input type="radio"/>	<input checked="" type="radio"/>
From Computer3, you can use Performance Monitor to monitor the performance of Computer1.	<input type="radio"/>	<input checked="" type="radio"/>

- A. Mastered
- B. Not Mastered

**Answer:** A

**Explanation:**

#### Answer Area

Statements	Yes	No
From Computer2, you can use Disk Management to manage Computer1 remotely.	<input checked="" type="checkbox"/>	<input type="checkbox"/>
From Computer2, you can use Registry Editor to edit the registry of Computer1 remotely.	<input checked="" type="checkbox"/>	<input type="checkbox"/>
From Computer3, you can use Performance Monitor to monitor the performance of Computer1.	<input type="checkbox"/>	<input checked="" type="checkbox"/>



### NEW QUESTION 188

- (Exam Topic 4)

You have a Microsoft 365 E5 subscription that contains 150 hybrid Azure AD joined Windows devices. All the devices are enrolled in Microsoft Intune. You need to configure Delivery Optimization on the devices to meet the following requirements:

- Allow downloads from the internet and from other computers on the local network.
- Limit the percentage of used bandwidth to 50. What should you use?

- A. a configuration profile
- B. a Windows Update for Business Group Policy setting
- C. a Microsoft Peer-to-Peer Networking Services Group Policy setting
- D. an Update ring for Windows 10 and later profile

**Answer:** A

#### Explanation:

A configuration profile is the correct answer because it allows you to configure Delivery Optimization settings for Windows devices in Intune. You can specify the download mode, bandwidth limit, caching options, and more. A configuration profile is a template that contains one or more settings that you can apply to groups of devices. References:

- [Windows 10 Delivery Optimization settings for Intune - Microsoft Intune | Microsoft Learn](#)
- [Delivery Optimization settings in Microsoft Intune](#)

### NEW QUESTION 189

- (Exam Topic 4)

You have a Microsoft 365 E5 subscription that contains 100 Windows 10 devices enrolled in Microsoft Intune. You plan to use Endpoint analytics.

You need to create baseline metrics.

What should you do first?

- A. Create an Azure Monitor workbook.
- B. Onboard 10 devices to Endpoint analytics.
- C. Create a Log Analytics workspace.
- D. Modify the Baseline regression threshold.

**Answer:** C

#### Explanation:

Onboarding from the Endpoint analytics portal is required for Intune managed devices. Reference: <https://docs.microsoft.com/en-us/mem/analytics/enroll-intune>

### NEW QUESTION 191

- (Exam Topic 4)

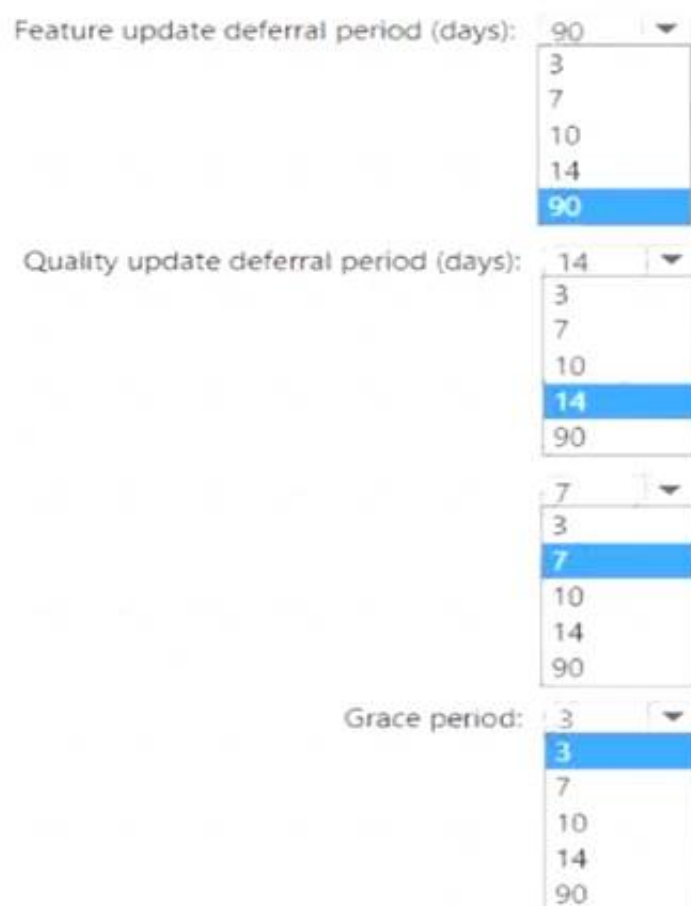
You have a Microsoft 365 subscription that uses Microsoft Intune Suite. You use Microsoft Intune to manage devices.

You need to configure an update ring that meets the following requirements:

- Fixes and improvements to existing Windows functionality can be deferred for 14 days but will install automatically seven days after that date.
- The installation of new Windows features can be deferred for 90 days but will install automatically 10 days after that date.
- Devices must restart automatically three days after an update is installed.

How should you configure the update ring? To answer, select the appropriate options in the answer area. NOTE: Each correct selection is worth one point.

**Answer Area**



The screenshot shows the configuration for a Windows Update ring. It contains three dropdown menus and one text input field:

- Feature update deferral period (days):** A dropdown menu with options 3, 7, 10, 14, and 90. The value 90 is selected.
- Quality update deferral period (days):** A dropdown menu with options 3, 7, 10, 14, and 90. The value 14 is selected.
- Grace period:** A dropdown menu with options 3, 7, 10, 14, and 90. The value 3 is selected.
- Restart period (days):** A text input field with the value 7 entered.

- A. Mastered
- B. Not Mastered

**Answer:** A

Explanation:  
Answer Area

Feature update deferral period (days): 90

Quality update deferral period (days): 14

Grace period: 3

NEW QUESTION 194

- (Exam Topic 4)

You have 1,000 computers that run Windows 10 and are members of an Active Directory domain. You need to capture the event logs from the computers to Azure.

What should you do? To answer, select the appropriate options in the answer area. NOTE: Each correct selection is worth one point.

Answer Area

Azure service to provision:

<input checked="" type="checkbox"/>
An Azure Storage account
Azure Cosmos DB
Azure SQL Database
Log Analytics

Action to perform on the computers:

<input checked="" type="checkbox"/>
Create a collector-initiated subscription
Install the Microsoft Monitoring Agent
Enroll in Microsoft Intune
Register to Azure Active Directory (Azure AD)

- A. Mastered
- B. Not Mastered

Answer: A

Explanation:

Answer Area

Azure service to provision:

<input type="checkbox"/>
An Azure Storage account
Azure Cosmos DB
Azure SQL Database
<input checked="" type="checkbox"/> Log Analytics

Action to perform on the computers:

<input type="checkbox"/>
Create a collector-initiated subscription
<input checked="" type="checkbox"/> Install the Microsoft Monitoring Agent
Enroll in Microsoft Intune
Register to Azure Active Directory (Azure AD)

NEW QUESTION 197

- (Exam Topic 4)

You have a Microsoft 365 tenant and an internal certification authority (CA).

You need to use Microsoft Intune to deploy the root CA certificate to managed devices.

Which type of Intune policy and profile should you use? To answer, select the appropriate options in the answer area.

NOTE: Each correct selection is worth one point.

Answer Area

Policy type:

<input type="text"/>
App configuration policy
App protection policy
Compliance policy
<input checked="" type="checkbox"/> Configuration profile

Profile:

<input type="text"/>
Imported public key pair (PKCS) certificate
Public key pair (PKCS) certificate
Simple Certificate Enrollment Protocol (SCEP) certificate
<input checked="" type="checkbox"/> Trusted certificate

A. Mastered

B. Not Mastered

Answer: A

Explanation:

Box 1: Configuration profile Create a trusted certificate profile. Box 2: Trusted certificate

When using Intune to provision devices with certificates to access your corporate resources and network, use a trusted certificate profile to deploy the trusted root certificate to those devices. Trusted root certificates establish a trust from the device to your root or intermediate (issuing) CA from which the other certificates are issued.

Reference: <https://docs.microsoft.com/en-us/mem/intune/protect/certificates-trusted-root>

NEW QUESTION 199

- (Exam Topic 4)

You have a Microsoft 365 subscription that uses Microsoft Intune and contains the users shown in the following table.

Name	Member of	License
User1	Group1	None
User2	Group1	Microsoft 365 E3
User3	Group2	Microsoft 365 E5

Group2 has been assigned in the Enrollment Status Page. You have the devices shown in the following table.



Name	Operating system	Department
Device1	Windows 10 Pro	Marketing
Device2	Windows 11 Home	Research
Device3	Windows 10 Pro	Marketing

You capture and upload the hardware IDs of the devices in the marketing department. You configure Windows Autopilot. For each of the following statements, select Yes if the statement is true. Otherwise select No. NOTE: Each correct selection is worth one point.

Answer Area

Statements	Yes	No
User1 can complete the Autopilot process on Device1.	<input type="radio"/>	<input type="radio"/>
User2 can complete the Autopilot process on Device1.	<input type="radio"/>	<input type="radio"/>
User3 can view device setup information during the enrollment phase of Device1.	<input type="radio"/>	<input type="radio"/>

- A. Mastered
- B. Not Mastered

Answer: A

Explanation:

Answer Area

Statements	Yes	No
User1 can complete the Autopilot process on Device1.	<input type="radio"/>	<input checked="" type="radio"/>
User2 can complete the Autopilot process on Device1.	<input checked="" type="radio"/>	<input type="radio"/>
User3 can view device setup information during the enrollment phase of Device1.	<input type="radio"/>	<input checked="" type="radio"/>

#### NEW QUESTION 201

- (Exam Topic 4)

You have a Microsoft 365 subscription that uses Microsoft Intune Suite.

You use Microsoft Intune to manage devices.

You need to ensure that the startup performance of managed Windows 11 devices is captured and available for review in the Intune admin center.

What should you configure?

- A. the Azure Monitor agent
- B. a device compliance policy
- C. a Conditional Access policy
- D. an Intune data collection policy

Answer: D

#### NEW QUESTION 204

- (Exam Topic 4)

You use a Microsoft Intune subscription to manage iOS devices.

You configure a device compliance policy that blocks jailbroken iOS devices. You need to enable Enhanced jailbreak detection.

What should you configure?

- A. the Compliance policy settings
- B. the device compliance policy
- C. a network location
- D. a configuration profile

Answer: D

#### NEW QUESTION 207

- (Exam Topic 4)

You have a Microsoft 365 subscription that uses Microsoft Intune Suite. You use Microsoft Intune to manage devices. You need to review the startup times and restart frequencies of the devices. What should you use?

- A. Azure Monitor
- B. intune Data Warehouse
- C. Microsoft Defender for Endpoint
- D. Endpoint analytics

**Answer:** D

**Explanation:**

Endpoint analytics is a feature of Microsoft Intune that provides insights into the performance and health of devices. You can use endpoint analytics to review the startup times and restart frequencies of the devices, as well as other metrics such as sign-in times, battery life, app reliability, and software inventory. References: <https://docs.microsoft.com/en-us/mem/analytics/overview>

**NEW QUESTION 209**

- (Exam Topic 4)

In Microsoft Intune, you have the device compliance policies shown in the following table.

Name	Type	Encryption	Windows Defender antimalware	Mark device as not compliant	Assigned to
Policy1	Windows 8.1 and later	Require	<i>Not applicable</i>	5 days	Group1
Policy2	Windows 10 and later	Not configured	Require	7 days	Group2
Policy3	Windows 10 and later	Require	Require	10 days	Group2

The Intune compliance policy settings are configured as shown in the following exhibit.

Save
 Discard

These settings configure the way the compliance service treats devices. Each device evaluates these as a "Built-in Device Compliance Policy", which is reflected in device monitoring.

Mark devices with no compliance policy assigned as 

Compliant
 

Not Compliant

Enhanced jailbreak detection 

Enabled
 

Disabled

Compliance status validity period (days) 

30

On June 1, you enroll Windows 10 devices in Intune as shown in the following table.

Name	Use BitLocker Drive Encryption (BitLocker)	Windows Defender	Member of
Device1	No	Enabled	Group1
Device2	No	Enabled	Group2

For each of the following statements, select Yes if the statement is true. Otherwise, select No. NOTE: Each correct selection is worth one point.

**Answer Area**

Statements	Yes	No
On June 4, Device1 is marked as compliant.		
On June 6, Device1 is marked as compliant.		
On June 9, Device2 is marked as compliant.		

- A. Mastered
- B. Not Mastered

**Answer:** A

**Explanation:**

Device 1 is Windows 10 - and policy 1 is for Windows 8. Default compliance for devices without a policy is not compliant so first 2 questions are NO. Then the third device has 2 policies, the first one is compliant and the second policy is not compliant but the device is not marked as non-compliant due to the fact that mark device as non-compliant is set to 10 days. This means that the machine will be compliant until june 10th.

Source:

Mark device non-compliant: By default, this action is set for each compliance policy and has a schedule of zero (0) days, marking devices as noncompliant immediately.

When you change the default schedule, you provide a grace period in which a user can remediate issues or become compliant without being marked as non-

compliant.

This action is supported on all platforms supported by Intune. <https://docs.microsoft.com/en-us/mem/intune/protect/actions-for-noncompliance>

#### NEW QUESTION 210

- (Exam Topic 4)

You have a Microsoft 365 subscription that contains a user named User1 and uses Microsoft Intune Suite. You use Microsoft Intune to manage devices that run Windows 11.

User1 provides remote support for 75 devices in the marketing department.

You need to add User1 to the Remote Desktop Users group on each marketing department device. What should you configure?

- A. an app configuration policy
- B. a device compliance policy
- C. an account protection policy
- D. a device configuration profile

Answer: D

#### NEW QUESTION 212

- (Exam Topic 4)

You have a Microsoft 365 subscription that uses Microsoft Intune. You plan to manage Windows updates by using Intune.

You create an update ring for Windows 10 and later and configure the User experience settings for the ring as shown in the following exhibit.

**User experience settings**

Automatic update behavior ⓘ	Auto install and restart at maintenance time
Active hours start * ⓘ	8 AM
Active hours end * ⓘ	5 PM
Restart checks ⓘ	<b>Allow</b> Skip
Option to pause Windows updates ⓘ	<b>Enable</b> Disable
Option to check for Windows updates ⓘ	<b>Enable</b> Disable
Change notification update level ⓘ	Use the default Windows Update notifications
Use deadline settings ⓘ	<b>Allow</b> Not configured
Deadline for feature updates ⓘ	5 ✓
Deadline for quality updates ⓘ	2 ✓
Grace period ⓘ	1 ✓
Auto reboot before deadline ⓘ	<b>Yes</b> No

Use the drop-down menus to select the answer choice that completes each statement based on the information presented in the graphic.

NOTE: Each correct selection is worth one point.

Answer Area

Automatic restarts are blocked [answer choice].

A restart will be forced on a device [answer choice] after the deadline.

- A. Mastered
- B. Not Mastered

Answer: A

Explanation:

Answer Area

Automatic restarts are blocked [answer choice].

A restart will be forced on a device [answer choice] after the deadline.



### NEW QUESTION 213

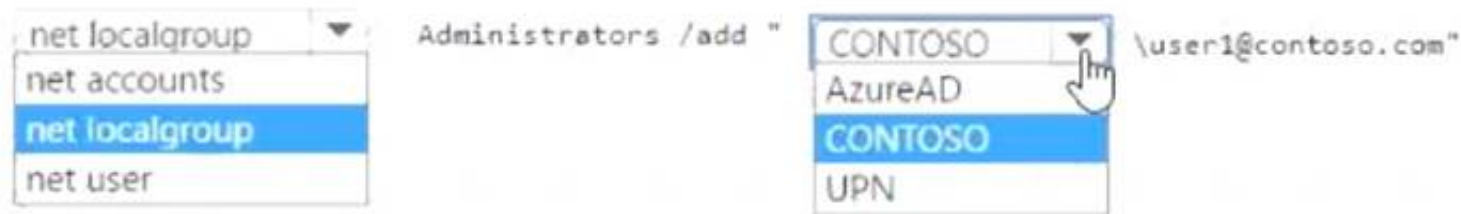
- (Exam Topic 4)

You have an Azure AD tenant named contoso.com that contains a user named User1. User1 has a user principal name (UPN) of user1@contoso.com.

You join a Windows 11 device named Client 1 to contoso.com. You need to add User1 to the local Administrators group of Client1.

How should you complete the command? To answer, select the appropriate options in the answer area. NOTE: Each correct selection is worth one point.

#### Answer Area



- A. Mastered
- B. Not Mastered

**Answer:** A

#### Explanation:

net localgroup Administrators /add "AzureAD\user1@contoso.com"

This command will add the Azure AD user with the UPN of user1@contoso.com to the local Administrators group of the device1. You need to use the AzureAD prefix and double backslashes to specify the user's domain2. You also need to enclose the user's name in quotation marks if it contains special characters like @1.

You can run this command from an elevated command prompt on Client1, or remotely by using PowerShell or other tools1. You can also use the Intune Role Administrator role or the Additional local administrators on all Azure AD joined devices setting to manage the local administrators group on Azure AD joined devices34.

### NEW QUESTION 218

- (Exam Topic 4)

You have an Azure AD tenant named contoso.com that contains the devices shown in the following table.

Name	Operating system
Device1	Windows 10
Device2	Android 8.0
Device3	Android 9
Device4	iOS 11.0
Device5	iOS 11.4.1

All devices contain an app named App1 and are enrolled in Microsoft Intune.

You need to prevent users from copying data from App1 and pasting the data into other apps.

Which type of policy and how many policies should you create in Intune? To answer, select the appropriate options in the answer area.

NOTE: Each correct selection is worth one point.

#### Answer Area



- A. Mastered
- B. Not Mastered

**Answer:** A

#### Explanation:

of Corre Answer Only: The correct answer is app protection policy because it allows you to customize the settings of apps for iOS/iPadOS or Android devices1. One of the settings you can configure is Restrict cut, copy, and paste between other apps, which lets you prevent users from copying data from App1 and pasting the data into other apps2. You only need one policy to apply this setting to all devices that have App1 installed.

References: 1: App configuration policies for Microsoft Intune | Microsoft Learn <https://learn.microsoft.com/en-us/mem/intune/apps/app-configuration-policies-overview> 2: Troubleshoot restricting cut, copy, and paste between applications - Intune | Microsoft Learn

<https://learn.microsoft.com/en-us/troubleshoot/mem/intune/app-protection-policies/troubleshoot-cut-copy-paste>

#### NEW QUESTION 223

- (Exam Topic 4)

You have a Microsoft 365 subscription that contains 1,000 iOS devices and includes Microsoft Intune. You need to prevent the printing of corporate data from managed apps on the devices, should you configure?

- A. an app configuration policy
- B. a security baseline
- C. an app protection policy
- D. an iOS app provisioning profile

**Answer:** C

#### Explanation:

An app protection policy is a set of rules that controls how data is accessed and handled by managed apps on mobile devices. App protection policies can prevent the printing of corporate data from managed apps on iOS devices by using the Restrict cut, copy, and paste with other apps setting. This setting can be configured to block printing from the iOS share menu. An app configuration policy is used to customize the behavior of a managed app, such as specifying a VPN profile or a web link. A security baseline is a collection of recommended security settings for Windows 10 devices that are managed by Intune. An iOS app provisioning profile is a file that contains information about the app's identity, entitlements, and distribution method

#### NEW QUESTION 226

- (Exam Topic 4)

Your company implements Azure AD, Microsoft 365, Microsoft Intune, and Azure Information Protection. The company's security policy states the following:

- Personal devices do not need to be enrolled in Intune.
- Users must authenticate by using a PIN before they can access corporate email data.
- Users can use their personal iOS and Android devices to access corporate cloud services.
- Users must be prevented from copying corporate email data to a cloud storage service other than Microsoft OneDrive for Business.

You need to configure a solution to enforce the security policy. What should you create?

- A. a device configuration profile from the Microsoft Intune admin center
- B. a data loss prevention (DIP) policy from the Microsoft Purview compliance portal
- C. an insider risk management policy from the Microsoft Purview compliance portal
- D. an app protection policy from the Microsoft Intune admin center

**Answer:** B

#### NEW QUESTION 228

- (Exam Topic 4)

You have a Microsoft 365 subscription that contains 1,000 Windows 11 devices enrolled in Microsoft Intune. You plan to use Intune to deploy an application named App1 that contains multiple installation files.

What should you do first?

- A. Prepare the contents of App1 by using the Microsoft Win32 Content Prep Tool.
- B. Create an Android application package (APK).
- C. Upload the contents of App1 to Intune.
- D. Install the Microsoft Deployment Toolkit (MDT).

**Answer:** A

#### NEW QUESTION 229

- (Exam Topic 4)

You have computers that run Windows 10 and are configured by using Windows AutoPilot. A user performs the following tasks on a computer named Computer1:

- Creates a VPN connection to the corporate network
- Installs a Microsoft Store app named App1
- Connects to a Wi-Fi network

You perform a Windows AutoPilot Reset on Computer1.

What will be the state of the computer when the user signs in? To answer, select the appropriate options in the answer area.

NOTE: Each correct selection is worth one point.

The Wi-Fi connection will be:

<input type="checkbox"/>	Removed
<input type="checkbox"/>	Retained and the passphrase will be retained
<input type="checkbox"/>	Retained but the passphrase will be reset

App1 will be:

<input type="checkbox"/>	Reinstalled at sign-in
<input type="checkbox"/>	Removed
<input type="checkbox"/>	Retained

The VPN connection will be:

<input type="checkbox"/>	Removed
<input type="checkbox"/>	Retained and the credentials will be cached
<input type="checkbox"/>	Retained but the credentials will be reset

- A. Mastered
- B. Not Mastered

**Answer:** A

**Explanation:**

Reference:

<https://docs.microsoft.com/en-us/windows/deployment/windows-autopilot/windows-autopilot-reset>

#### NEW QUESTION 231

- (Exam Topic 4)

You use the Microsoft Deployment Toolkit (MDT) to deploy Windows 11.

You create a new task sequence by using the Standard Client Task Sequence template to deploy Windows 11 Enterprise to new computers. The computers have a single hard disk.

You need to modify the task sequence to create a system volume and a data volume.

Which phase should you modify in the task sequence?

- A. Initialization
- B. State Restore
- C. Preinstall
- D. Postinstall

**Answer:** C

#### NEW QUESTION 236

- (Exam Topic 4)

You have a Microsoft 365 subscription that uses Microsoft Intune Suite.

You use Microsoft Intune to manage devices. All devices are in the same time zone. You create an update rings policy and assign the policy to all Windows devices.

On the November 1, you pause the update rings policy. All devices remain online.

Without further modification to the policy, on which date will the devices next attempt to update?

- A. December 1
- B. December 6
- C. November 15
- D. November 22

**Answer:** C

#### NEW QUESTION 240

- (Exam Topic 4)

You have a Microsoft 365 Business Standard subscription and 100 Windows 10 Pro devices. You purchase a Microsoft 365 E5 subscription.

You need to upgrade the Windows 10 Pro devices to Windows 10 Enterprise. The solution must minimize administrative effort.

Which upgrade method should you use?

- A. Windows Autopilot
- B. a Microsoft Deployment Toolkit (MDT) lite-touch deployment
- C. Subscription Activation
- D. an in-place upgrade by using Windows installation media

**Answer:** C

**Explanation:**

Subscription Activation is a feature that allows you to upgrade from Windows 10 Pro or Windows 11 Pro to Windows 10 Enterprise or Windows 11 Enterprise



without needing a product key or reinstallation. You just need to assign a subscription license (such as Microsoft 365 E5) to the user in Azure AD, and then sign in to the device with that user account. The device will automatically activate Windows Enterprise edition using the firmware-embedded activation key for Windows Pro edition. This method minimizes administrative effort and simplifies the upgrade process. References: Windows subscription activation, Deploy Windows Enterprise licenses

#### NEW QUESTION 242

- (Exam Topic 4)

You use Windows Admin Center to remotely administer computers that run Windows 10.

When connecting to Windows Admin Center, you receive the message shown in the following exhibit.

**This site is not secure**

This might mean that someone's trying to fool you or steal any info you send to the server. You should close this site immediately.

 Go to your Start page

Details

Your PC doesn't trust this website's security certificate.

Error Code: DLG\_FLAGS\_INVALID\_CA

**Go on to the webpage** (Not recommended)

You need to prevent the message from appearing when you connect to Windows Admin Center. To which certificate store should you import the certificate?

- A. Personal
- B. Trusted Root Certification Authorities
- C. Client Authentication Issuers

**Answer: B**

#### NEW QUESTION 243

- (Exam Topic 4)

You have a Hyper-V host that contains the virtual machines shown in the following table.

Name	Generation	Virtual processors	Memory
VM1	1	4	16 GB
VM2	2	1	8 GB
VM3	2	2	4 GB

On which virtual machines can you install Windows 11?

- A. VM1 only
- B. VM3only
- C. VM1 and VM2 only
- D. VM2 and VM3 only
- E. VM1, VM2, and VM3

**Answer: E**

#### NEW QUESTION 248

- (Exam Topic 4)

You have a Microsoft 365 subscription. The subscription contains computers that run Windows 11 and are enrolled in Microsoft Intune. You need to create a compliance policy that meets the following requirements:

- Requires BitLocker Drive Encryption (BitLocker) on each device
- Requires a minimum operating system version

Which setting of the compliance policy should you configure for each requirement? To answer, drag the appropriate settings to the correct requirements. Each setting may be used once, more than once, or not at all. You may need to drag the split bar between panes or scroll to view content.

NOTE: Each correct selection is worth one point,

Settings

Device Health

Device Properties

Microsoft Defender for Endpoint

System Security

Answer Area

Requires BitLocker:

Requires a minimum operating system version:

- A. Mastered  
B. Not Mastered

Answer: A

Explanation:

Settings

Device Health

Device Properties

Microsoft Defender for Endpoint

System Security

Answer Area

Requires BitLocker:

System Security

Requires a minimum operating system version:

Device Properties

NEW QUESTION 253

- (Exam Topic 4)  
You have a Microsoft 365 E5 subscription that uses Microsoft Intune.  
You add apps to Intune as shown in the following table.

Name	App type
App1	Android store app
App2	Android line-of-business app
App3	Managed Google Play app

You need to create an app configuration policy named Policy1 for the Android Enterprise platform. Which apps can you manage by using Policy1?

- A. App2 only  
B. App3 only  
C. App1 and App3 only  
D. App2 and App3 only  
E. App1, App2, and App3

Answer: D

NEW QUESTION 255

- (Exam Topic 4)  
You have an Azure Active Directory (Azure AD) tenant that contains the users shown in the following table.

Name	Member of
User1	Group1
User2	Group2

You have devices enrolled in Microsoft Intune as shown in the following table.

Name	Platform	Member of
Device1	Windows 10	Group1
Device2	Android	Group1
Device3	iOS	Group2

From Intune, you create and send a custom notification named Notification1 to Group1.  
For each of the following statements, select Yes if the statement is true. Otherwise, select No.  
NOTE: Each correct selection is worth one point.

## Statements

Yes

No

User1 receives Notification1 on Device1.

☐
☐

User2 receives Notification1 on Device2.

☐
☐

User1 receives Notification1 on Device3.

☐
☐

- A. Mastered
- B. Not Mastered

**Answer:** A

### Explanation:

A screenshot of a computer Description automatically generated with medium confidence

Reference:

<https://docs.microsoft.com/en-us/mem/intune/remote-actions/custom-notifications>

### NEW QUESTION 256

- (Exam Topic 4)

You have a Microsoft 365 subscription that uses Microsoft Intune. You have five new Windows 11 Pro devices.

You need to prepare the devices for corporate use. The solution must meet the following requirements:

- Install Windows 11 Enterprise on each device.
- Install a Windows Installer (MSI) package named App1 on each device.
- Add a certificate named Certificate1 that is required by App1.
- Join each device to Azure AD.

Which three provisioning options can you use? Each correct answer presents a complete solution. NOTE: Each correct selection is worth one point.

- A. subscription activation
- B. a custom Windows image
- C. an in-place upgrade
- D. Windows Autopilot
- E. provisioning packages

**Answer:** BDE

### NEW QUESTION 260

- (Exam Topic 4)

You have a Microsoft 365 subscription that includes Microsoft Intune.

You have an update ring named UpdateRing1 that contains the following settings:

- Automatic update behavior: Auto install and restart at a scheduled time
- Automatic behavior frequency: First week of the month
- Scheduled install day: Tuesday
- Scheduled install time: 3 AM

From the Microsoft Intune admin center, you select Uninstall for the feature updates of UpdateRing1. When will devices start to remove the feature updates?

- A. when a user approves the uninstall
- B. as soon as the policy is received
- C. next Tuesday
- D. the first Tuesday of the next month

**Answer:** C

### NEW QUESTION 263

- (Exam Topic 4)

Your network contains an on-premises Active Directory domain and an Azure AD tenant.

The Default Domain Policy Group Policy Object (GPO) contains the settings shown in the following table.

Name	GPO value
LockoutBadCount	0
MaximumPasswordAge	42
MinimumPasswordAge	1
MinimumPasswordLength	7
PasswordComplexity	True
PasswordHistorySize	24

Which device configuration profile type template should you use?

- A. Administrative Templates
- B. Endpoint protection



- C. Device restrictions
- D. Custom

**Answer:** A

**Explanation:**

To configure the settings shown in the table, you need to use the Administrative Templates device configuration profile type template. This template allows you to configure hundreds of settings that are also available in Group Policy. You can use this template to configure settings such as password policies, account lockout policies, and audit policies. References:  
<https://docs.microsoft.com/en-us/mem/intune/configuration/administrative-templates-windows>

**NEW QUESTION 267**

- (Exam Topic 4)

You have 200 computers that run Windows 10. The computers are joined to Azure AD and enrolled in Microsoft Intune. You need to set a custom image as the wallpaper and sign-in screen.

Which two settings should you configure in the Device restrictions configuration profile? To answer, select the appropriate settings in the answer area.

NOTE: Each correct selection is worth one point.

**Answer Area**

### Device restrictions

Windows 10 and later

✓ Basics

**2 Configuration settings**

3 Assignments

4 Applicability Rules

5 Review + create

✓ App Store

✓ Cellular and connectivity

✓ Cloud and Storage

✓ Cloud Printer

✓ Control Panel and Settings

✓ Display

✓ General

✓ Locked Screen Experience ✓

✓ Messaging

✓ Microsoft Edge Browser

✓ Network proxy

✓ Password

✓ Per-app privacy exceptions

✓ Personalization ✓

✓ Printer

✓ Privacy

✓ Projection

Previous

Next

- A. Mastered
- B. Not Mastered

**Answer:** A

**Explanation:**

Answer Area

## Device restrictions

Windows 10 and later

✓ Basics

**2 Configuration settings**

3 Assignments

4 Applicability Rules

5 Review + create

✓ App Store

✓ Cellular and connectivity

✓ Cloud and Storage

✓ Cloud Printer

✓ Control Panel and Settings

✓ Display

✓ General

✓ Locked Screen Experience ✓

✓ Messaging

✓ Microsoft Edge Browser

✓ Network proxy

✓ Password

✓ Per-app privacy exceptions

✓ Personalization ✓

✓ Printer

✓ Privacy

✓ Projection

Previous

Next

### NEW QUESTION 270

- (Exam Topic 4)

You have a Microsoft Intune subscription that has the following device compliance policy settings: Mark devices with no compliance policy assigned as: Compliant  
 Compliance status validity period (days): 14

On January 1, you enroll Windows 10 devices in Intune as shown in the following table.

Name	BitLocker Drive Encryption (BitLocker)	Firewall	Scope (Tags)	Member of
Device1	Enabled	Off	Tag1	Group1
Device2	Disabled	On	Tag2	Group2

On January 4, you create the following two device compliance policies:

- Name: Policy1
- Platform: Windows 10 and later
- Require BitLocker: Require
- Mark device noncompliant: 5 days after noncompliance
- Scope (Tags): Tag1
- Name: Policy2
- Platform: Windows 10 and later
- Firewall: Require
- Mark device noncompliant: Immediately
- Scope (Tags): Tag2

On January 5, you assign Policy1 and Policy2 to Group1.

For each of the following statements, select Yes if the statement is true. Otherwise, select No.

NOTE: Each correct selection is worth one point.

Statements	Yes	No
On January 7, Device1 is marked as compliant.	<input type="radio"/>	<input type="radio"/>
On January 8, Device1 is marked as compliant.	<input type="radio"/>	<input type="radio"/>
On January 8, Device2 is marked as compliant.	<input type="radio"/>	<input type="radio"/>

- A. Mastered  
B. Not Mastered

Answer: A

Explanation:

Box 1: No.  
Policy1 and Policy2 apply to Group1 which Device1 is a member of. Device1 does not meet the firewall requirement in Policy2 so the device will immediately be marked as non-compliant.  
Box 2: No  
For the same reason as Box1. Box 3: Yes  
Policy1 and Policy2 apply to Group1. Device2 is not a member of Group1 so the policies don't apply.  
The Scope (tags) have nothing to do with whether the policy is applied or not. The tags are used in RBAC.

NEW QUESTION 275

- (Exam Topic 4)  
You have a Microsoft 365 E5 subscription and a computer that runs Windows 11. You need to create a customized installation of Microsoft 365 Apps for enterprise.  
Which four actions should you perform in sequence? To answer, move the appropriate cmdlets from the list of cmdlets to the answer area and arrange them in the correct order.

Actions

Run setup.exe and specify the /packager switch.

Download the Microsoft Office Deployment Tool (ODT) and run the self-extracting executable (.exe) file.

Edit the XML configuration file.

Run setup.exe and specify the /download switch.

Run setup.exe and specify the /configure switch.

>

<

Answer Area

^

v

- A. Mastered  
B. Not Mastered

Answer: A

Explanation:

\* 1. Download ODT application  
\* 2. Create a configuration file (XML)  
\* 3. setup.exe /download to download the installation files  
\* 4. setup.exe /configure to deploy the application  
<https://learn.microsoft.com/en-us/deployoffice/deploy-microsoft-365-apps-local-source>

NEW QUESTION 276

- (Exam Topic 4)  
Your network contains an Active Directory domain. The domain contains a computer named Computer1 that runs Windows 11. You need to enable the Windows Remote Management (WinRM) service on Computer1 and perform the following configurations:  
• For the WinRM service, set Startup type to Automatic.  
• Create a listener that accepts requests from any IP address.  
• Enable a firewall exception for WS-Management communications. Which PowerShell cmdlet should you use?

- A. Connect-WSMan  
B. Enable-PSRemoting  
C. Invoke-WSManAction  
D. Enable-PSSessionConfiguration

Answer: B

NEW QUESTION 281

- (Exam Topic 4)



You have a Microsoft 365 subscription that includes Microsoft Intune. You have computers that run Windows 11 as shown in the following table.

Name	Azure AD status	Intune	BitLocker Drive Encryption (BitLocker)	Firewall
Computer1	Joined	Enrolled	Disabled	Enabled
Computer2	Registered	Enrolled	Enabled	Enabled
Computer3	Registered	Not enrolled	Enabled	Disabled

You have the groups shown in the following table.

Name	Members
Group1	Computer1, Computer2
Group2	Computer3

You create and assign the compliance policies shown in the following table.

Name	Configuration	Action for noncompliance	Assignment
Policy1	Require BitLocker to be enabled on the device.	Mark device as noncompliant after 10 days.	Group1
Policy2	Require firewall to be on and monitoring.	Mark device as noncompliant immediately.	Group2

The next day, you review the compliance status of the computers.

For each of the following statements, select Yes if the statement is true. Otherwise, select No. NOTE: Each correct selection is worth one point.

Answer Area	Statements	Yes	No
	The compliance status of Computer1 is In grace period.	<input type="checkbox"/>	<input type="checkbox"/>
	The compliance status of Computer2 is Compliant.	<input type="checkbox"/>	<input type="checkbox"/>
	The compliance status of Computer3 is Not compliant.	<input type="checkbox"/>	<input type="checkbox"/>

- A. Mastered  
B. Not Mastered

Answer: A

Explanation:

Answer Area	Statements	Yes	No
	The compliance status of Computer1 is In grace period.	<input type="checkbox"/>	<input type="checkbox"/>
	The compliance status of Computer2 is Compliant.	<input type="checkbox"/>	<input type="checkbox"/>
	The compliance status of Computer3 is Not compliant.	<input type="checkbox"/>	<input type="checkbox"/>

#### NEW QUESTION 286

- (Exam Topic 4)

You use Microsoft Defender for Endpoint to protect computers that run Windows 10.

You need to assess the differences between the configuration of Microsoft Defender for Endpoint and the Microsoft-recommended configuration baseline.

Which tool should you use?

- A. Microsoft Defender for Endpoint Power 81 app  
B. Microsoft Secure Score  
C. Endpoint Analytics  
D. Microsoft 365 Defender portal

Answer: B

#### NEW QUESTION 287

- (Exam Topic 4)

You have a Microsoft Deployment Toolkit (MDT) deployment share named DS1. You import a Windows 11 image to DS1.

You have an executable installer for an application named App1.

You need to ensure that App1 will be installed for all the task sequences that deploy the image.

Which three actions should you perform in sequence? To answer, move the appropriate actions from the list of actions to the answer area and arrange them in the correct order.

**Actions**

Modify a Windows 11 operating system setting.

Modify a selection profile.

Add App1 to DS1.

Identify the GUID of App1.

Modify CustomSettings.ini.

>

<

**Answer Area**

1 Add App1 to DS1.

2 Identify the GUID of App1.

3 Modify CustomSettings.ini.

↑

↓

- A. Mastered  
B. Not Mastered

**Answer:** A

**Explanation:**

MDT is a tool that allows you to automate the deployment of Windows operating systems and applications. To install an application for all the task sequences that deploy a Windows 11 image, you need to perform the following three actions in sequence:

- > Add App1 to DS1. You can use the Deployment Workbench to import the executable installer of App1 to a folder in your deployment share. This will create an application entry with a unique GUID that identifies App1.
- > Identify the GUID of App1. You can find the GUID of App1 by opening the application properties in the Deployment Workbench and looking at the Application GUID field1. You can copy the GUID to use it later.
- > Modify CustomSettings.ini. You can edit the CustomSettings.ini file in your deployment share to specify which applications to install for each task sequence. You can use the Applications property to list the GUIDs of the applications you want to install, separated by commas1. For example, if you want to install App1 and another application with GUID {1234-5678-90AB-CDEF}, you can use this line:

Applications={GUID of App1},{1234-5678-90AB-CDEF}

These are the three actions you need to perform to ensure that App1 will be installed for all the task sequences that deploy the Windows 11 image from DS1. I hope this helps you.

If you want to learn more about MDT and how to deploy applications with it, you can check out these resources:

- > How to deploy applications with the Microsoft Deployment Toolkit

**NEW QUESTION 291**

- (Exam Topic 4)

You have a Microsoft 365 subscription that uses Microsoft Intune Suite. You use Microsoft Intune to manage devices.

You have the devices shown in the following table.

Name	Operating system	Activation type
Device1	Windows 10 Pro for Workstation	Key
Device2	Windows 11 Pro	Key
Device3	Windows 11 Pro	Subscription

Which devices can be changed to Windows 11 Enterprise by using subscription activation?

- A. Device3 only  
B. Device2 and Device3 only  
C. Device 1 and Device2 only  
D. Device1, Device2, and Device3

**Answer:** A

**NEW QUESTION 296**

- (Exam Topic 4)

You install a feature update on a computer that runs Windows 10. How many days do you have to roll back the update?

- A. 5  
B. 10  
C. 14  
D. 30

**Answer:** B

**NEW QUESTION 301**

- (Exam Topic 4)

You have SOO Windows 10 devices enrolled in Microsoft Intune.

You plan to use Exploit protection in Microsoft Intune to enable the following system settings on the devices:

- Data Execution Prevention (DEP)
- Force randomization for images (Mandatory ASIR)

You need to configure a Windows 10 device that will be used to create a template file.

Which protection areas on the device should you configure in the Windows Security app before you create the template file? To answer, drag the appropriate protection areas to the correct settings. Each protection area may be used once, more than once, or not at all. You may need to drag the split bar between panes or scroll to view content.

NOTE: Each correct selection is worth one point.

Protection areas	Answer Area
Account protection	DEP: <input type="text"/>
App & browser control	Mandatory ASLR: <input type="text"/>
Device security	
Virus & threat protection	

- A. Mastered
- B. Not Mastered

Answer: A

#### Explanation:

Exploit protection is a feature that helps protect against malware that uses exploits to infect devices and spread. Exploit protection consists of many mitigations that can be applied to either the operating system or individual apps1.

To configure a Windows 10 device that will be used to create a template file for Exploit protection, you need to configure the following protection areas on the device in the Windows Security app:

- > DEP: Device security. Data Execution Prevention (DEP) is a mitigation that prevents code from running in memory regions marked as non-executable. You can enable DEP system-wide or for specific apps in the Device security section of the Windows Security app1.
- > Mandatory ASLR: App & browser control. Force randomization for images (Mandatory ASLR) is a mitigation that randomizes the location of executable images in memory, making it harder for attackers to predict where to inject code. You can enable Mandatory ASLR system-wide or for specific apps in the App & browser control section of the Windows Security app1.

#### NEW QUESTION 304

- (Exam Topic 4)

You have a Microsoft 365 subscription that contains 500 computers that run Windows 11. The computers are Azure AD joined and are enrolled in Microsoft Intune. You plan to manage Microsoft Defender Antivirus on the computers. You need to prevent users from disabling Microsoft Defender Antivirus, What should you do?

- A. From the Microsoft Intune admin center, create a security baseline.
- B. From the Microsoft 365 Defender portal, enable tamper protection.
- C. From the Microsoft Intune admin center, create an account protection policy.
- D. From the Microsoft Intune admin center, create an endpoint detection and response (EDR) policy.

Answer: B

#### Explanation:

Tamper protection is a feature of Microsoft Defender Antivirus that prevents users or malicious software from disabling or modifying the antivirus settings. Tamper protection can be enabled from the Microsoft 365 Defender portal for devices that are Azure AD joined and enrolled in Microsoft Intune. This will prevent users from turning off Microsoft Defender Antivirus or changing its configuration through Windows Security, PowerShell, Registry, or Group Policy. References: [Enable tamper protection]

#### NEW QUESTION 307

- (Exam Topic 4)

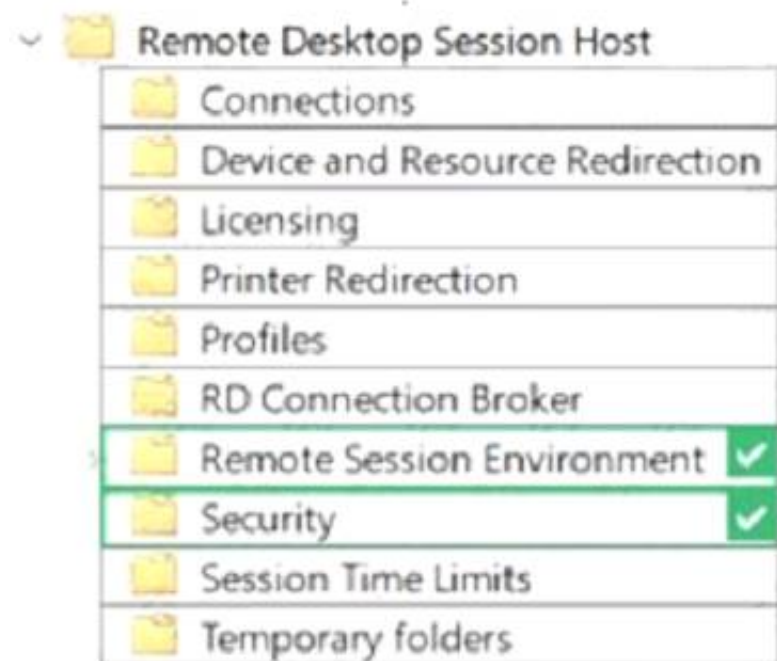
Your network contains an Active Directory domain. The domain contains 1.000 computers that run Windows 11.

You need to configure the Remote Desktop settings of all the computers. The solution must meet the following requirements:

- Prevent the sharing of clipboard contents.
- Ensure that users authenticate by using Network Level Authentication (NLA).

Which two nodes of the Group Policy Management Editor should you use? To answer, select the appropriate nodes in the answer area. NOTE: Each correct selection is worth one point.

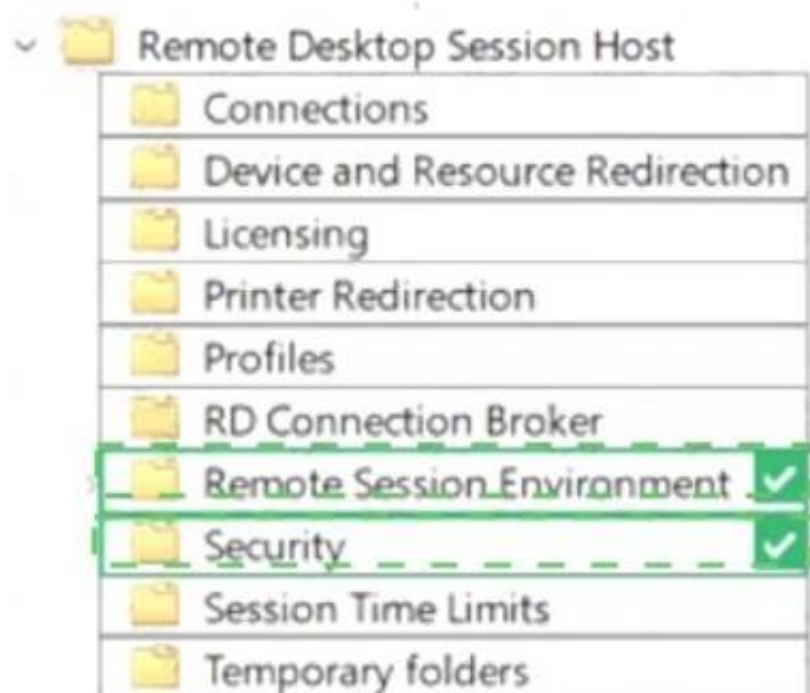




- A. Mastered
- B. Not Mastered

**Answer:** A

**Explanation:**



#### NEW QUESTION 308

- (Exam Topic 4)

You have a Microsoft 365 subscription that contains a user named User1. User1 is assigned a Windows 10/11 Enterprise E3 license. You use Microsoft Intune Suite to manage devices. User1 activates the following devices:

- Device1: Windows 11 Enterprise
- Device2: Windows 10 Enterprise
- Device3: Windows 11 Enterprise

How many more devices can User1 activate?

- A. 2
- B. 3
- C. 7
- D. 8

**Answer:** A

#### NEW QUESTION 313

- (Exam Topic 4)

You have a Microsoft 365 subscription.

You need provide a user the ability to disable Security defaults and principle of least privilege. Which role should you assign to the user?

- A. Global Administrator
- B. Conditional Access Administrator
- C. Security Administrator
- D. Intune Administrator

**Answer:** B

**Explanation:**

To enable or disable security defaults in your directory, sign in to the Azure portal as a security administrator, Conditional Access administrator, or global

administrator.

Note: Conditional Access Administrator

Users with this role have the ability to manage Azure Active Directory Conditional Access settings.

Reference:

https://docs.microsoft.com/en-us/azure/active-directory/fundamentals/concept-fundamentals-security-defaults

#### NEW QUESTION 318

- (Exam Topic 4)

Your network contains an Active Directory domain named contoso.com. The domain contains a computer named Computer1 that runs Windows 10. You have the groups shown in the following table.

Name	Type	Location
Group1	Universal distribution group	Contoso.com
Group2	Global security group	Contoso.com
Group3	Group	Computer1
Group4	Group	Computer1

Which groups can you add to Group4?

- A. Group2only
- B. Group1 and Group2 only
- C. Group2 and Group3 only
- D. Group1, Group2, and Group3

**Answer: C**

#### NEW QUESTION 322

- (Exam Topic 4)

You have a Microsoft 365 subscription that uses Microsoft Intune Suite. You use Microsoft Intune to manage devices.

You plan to create Windows 11 device builds for the marketing and research departments The solution must meet the following requirements:

- Marketing department devices must support Windows Update for Business.
- Research department devices must have support for feature update versions for up to 36 months from release. What is the minimum Windows 11 edition required for each department? To answer, select the appropriate options in the answer area.

NOTE: Each correct selection is worth one point

#### Answer Area

Marketing:

Research:

- A. Mastered
- B. Not Mastered

**Answer: A**

**Explanation:**

#### Answer Area

Marketing:

Research:

NEW QUESTION 325

.....



## THANKS FOR TRYING THE DEMO OF OUR PRODUCT

Visit Our Site to Purchase the Full Set of Actual MD-102 Exam Questions With Answers.

We Also Provide Practice Exam Software That Simulates Real Exam Environment And Has Many Self-Assessment Features. Order the MD-102 Product From:

<https://www.2passeasy.com/dumps/MD-102/>

## Money Back Guarantee

### MD-102 Practice Exam Features:

- \* MD-102 Questions and Answers Updated Frequently
- \* MD-102 Practice Questions Verified by Expert Senior Certified Staff
- \* MD-102 Most Realistic Questions that Guarantee you a Pass on Your FirstTry
- \* MD-102 Practice Test Questions in Multiple Choice Formats and Updatesfor 1 Year