

## 350-401 Dumps

# Implementing and Operating Cisco Enterprise Network Core Technologies

<https://www.certleader.com/350-401-dumps.html>



**NEW QUESTION 1**

Which DHCP option helps lightweight APs find the IP address of a wireless LAN controller?

- A. Option 43
- B. Option 60
- C. Option 67
- D. Option 150

**Answer:** A

**NEW QUESTION 2**

What is a characteristic of YANG?

- A. It is a Cisco proprietary language that models NETCONF data
- B. It allows model developers to create custom data types
- C. It structures data in an object-oriented fashion to promote model reuse
- D. It provides loops and conditionals to control how within models

**Answer:** C

**NEW QUESTION 3**

Which devices does Cisco DNA Center configure when deploying an IP-based access control policy?

- A. All devices integrating with ISE
- B. selected individual devices
- C. all devices in selected sites
- D. all wired devices

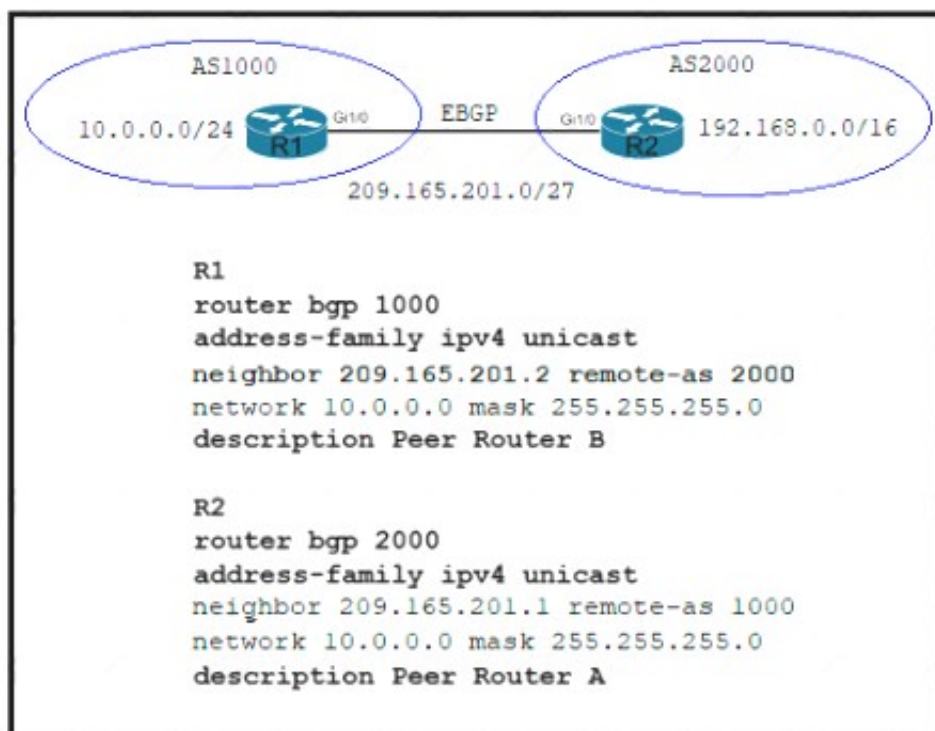
**Answer:** A

**Explanation:**

When you click Deploy, Cisco DNA Center requests the Cisco Identity Services Engine (Cisco ISE) to send notifications about the policy changes to the network devices.

**NEW QUESTION 4**

Refer to the exhibit.



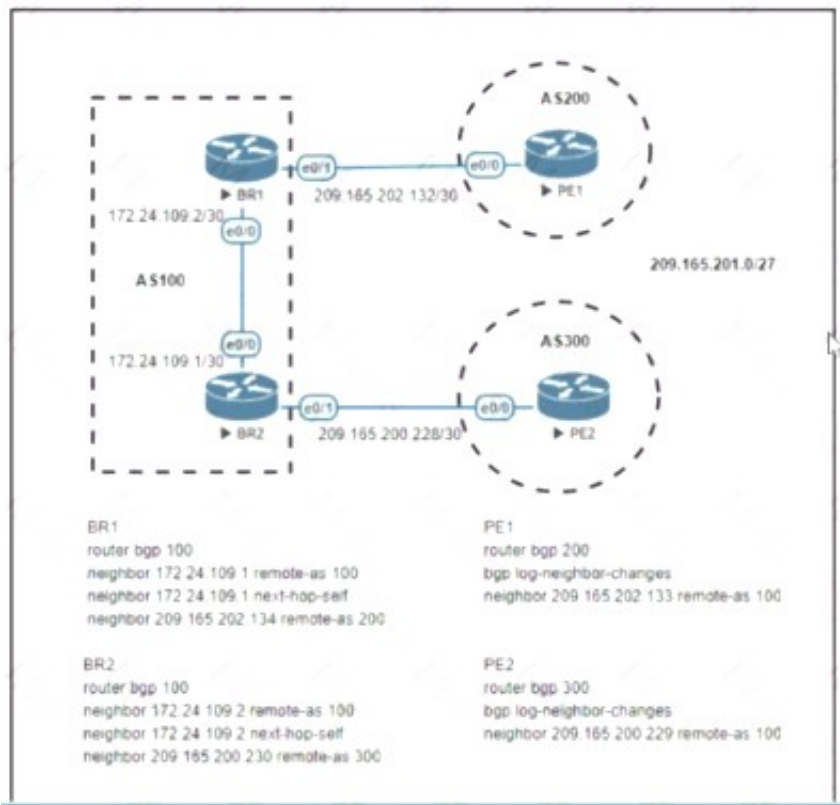
Which two commands are needed to allow for full reachability between AS 1000 and AS 2000? (Choose two)

- A. R1#network 19.168.0.0 mask 255.255.0.0
- B. R2#no network 10.0.0.0 255.255.255.0
- C. R2#network 19.168.0.0 mask 255.255.0.0
- D. R2#network 209.165.201.0 mask 255.255.192.0
- E. R1#no network 10.0.0.0 255.255.255.0

**Answer:** BC

**NEW QUESTION 5**

Refer to the exhibit.



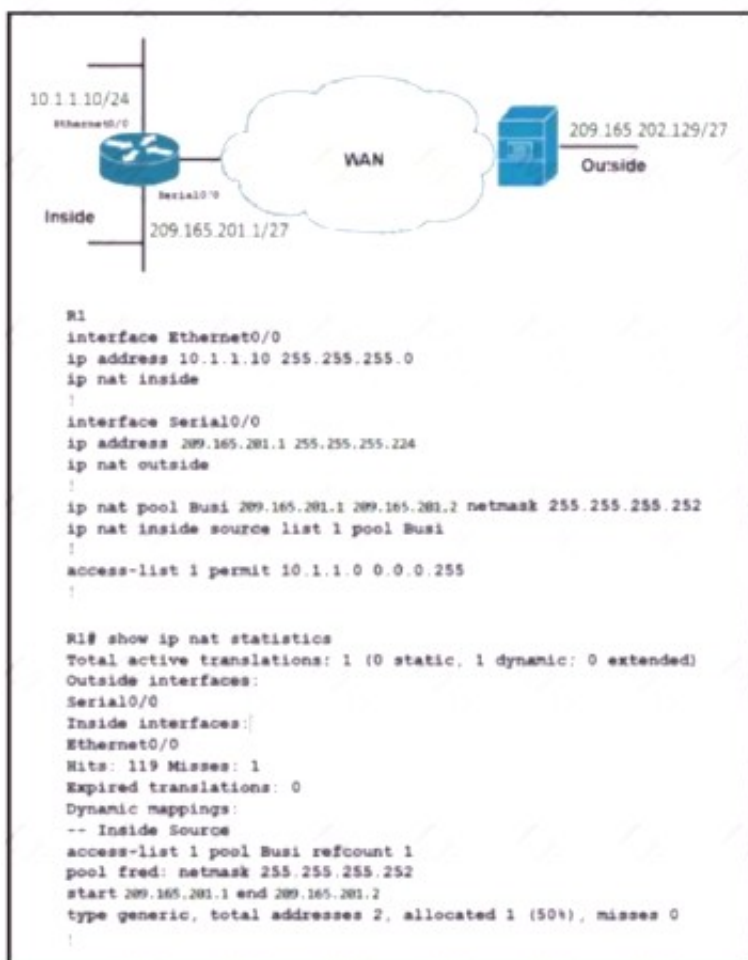
Which configuration change will force BR2 to reach 209.165.201.0/27 via BR1?

- A. Set the weight attribute to 65.535 on BR1 toward PE1.
- B. Set the local preference to 150 on PE1 toward BR1 outbound.
- C. Set the MED to 1 on PE2 toward BR2 outbound.
- D. Set the origin to igp on BR2 toward PE2 inbound.

**Answer: C**

#### NEW QUESTION 6

Refer to the exhibit.



A network engineer configures NAT on R1 and enters the show command to verify the configuration. What does the output confirm?

- A. The first packet triggered NAT to add an entry to NAT table.
- B. R1 is configured with NAT overload parameters.
- C. A Telnet from 160.1.1.1 to 10.1.1.10 has been initiated.
- D. R1 is configured with PAT overload parameters.

**Answer: A**

#### NEW QUESTION 7

Drag and drop the threat defense solutions from the left onto their descriptions on the right.

Umbrella	provides malware protection on endpoints
AMP4E	provides IPS/IDS capabilities
FTD	performs security analytics by collecting network flows
StealthWatch	protects against email threat vector
ESA	provides DNS protection

- A. Mastered
- B. Not Mastered

Answer: A

Explanation:

Umbrella	AMP4E
AMP4E	FTD
FTD	StealthWatch
StealthWatch	ESA
ESA	Umbrella

NEW QUESTION 8

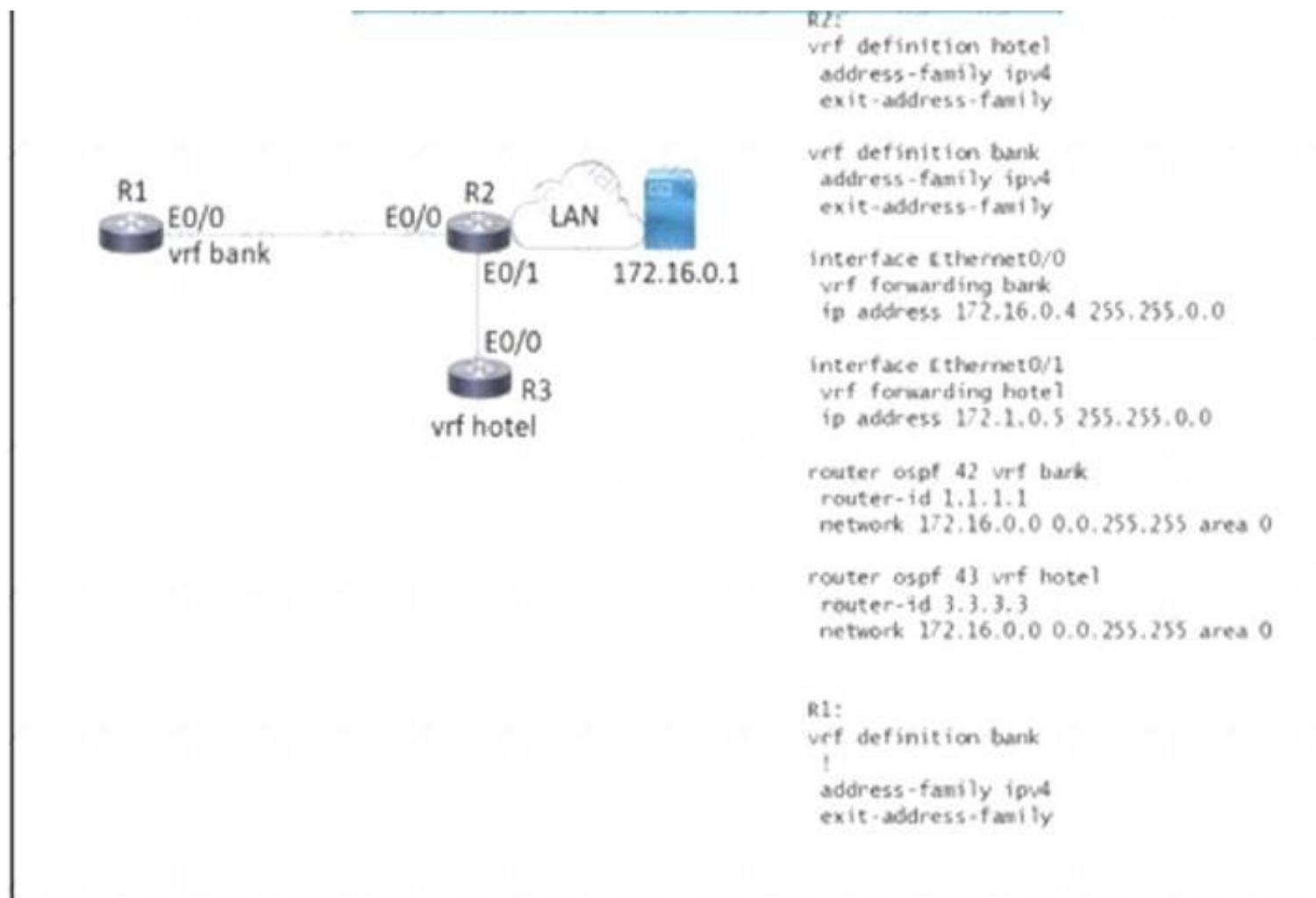
Which two methods are used to reduce the AP coverage area? (Choose two)

- A. Reduce channel width from 40 MHz to 20 MHz
- B. Disable 2.4 GHz and use only 5 GHz.
- C. Reduce AP transmit power.
- D. Increase minimum mandatory data rate
- E. Enable Fastlane

Answer: CD

NEW QUESTION 9

Refer to the exhibit.



Which configuration must be applied to R to enable R to reach the server at 172.16.0.1?

A)

```

interface Ethernet0/0
vrf forwarding hotel
ip address 172.16.0.7 255.255.0.0

router ospf 44 vrf Hotel
network 172.16.0.0 0.0.255.255 area 0
    
```

B)

```

interface Ethernet0/0
ip address 172.16.0.7 255.255.0.0

router ospf 44 vrf hotel
network 172.16.0.0 255.255.0.0
    
```

C)

```

interface Ethernet0/0
ip address 172.16.0.7 255.255.0.0

router ospf 44 vrf bank
network 172.16.0.0 255.255.0.0
    
```

D)

```

interface Ethernet0/0
vrf forwarding bank
ip address 172.16.0.7 255.255.0.0

router ospf 44 vrf bank
network 172.16.0.0 0.0.255.255 area 0
    
```

- A. Option A
- B. Option B
- C. Option C
- D. Option D

**Answer: D**

#### NEW QUESTION 10

What are two benefits of virtual switching when compared to hardware switching? (Choose two.)

- A. increased MTU size
- B. hardware independence
- C. VM-level isolation
- D. increased flexibility
- E. extended 802.1Q VLAN range



**Answer:** CD

#### NEW QUESTION 10

Which controller is capable of acting as a STUN server during the onboarding process of Edge devices?

- A. vBond
- B. vSmart
- C. vManage
- D. PNP server

**Answer:** A

#### NEW QUESTION 14

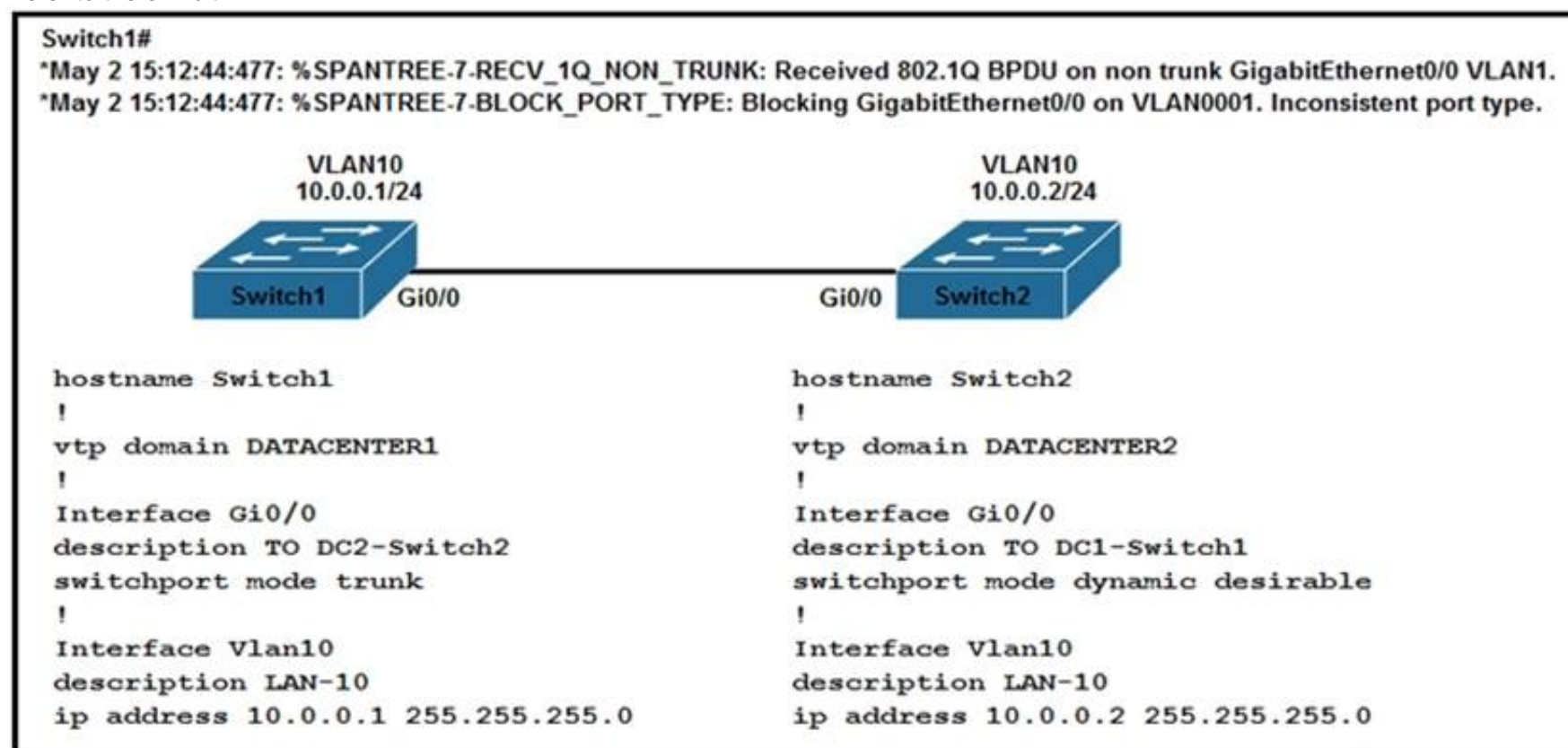
Which benefit is offered by a cloud infrastructure deployment but is lacking in an on-premises deployment?

- A. efficient scalability
- B. virtualization
- C. storage capacity
- D. supported systems

**Answer:** A

#### NEW QUESTION 16

Refer to the exhibit.



An engineer implemented several configuration changes and receives the logging message on switch1. Which action should the engineer take to resolve this issue?

- A. Change the VTP domain to match on both switches
- B. Change Switch2 to switch port mode dynamic auto
- C. Change Switch1 to switch port mode dynamic auto
- D. Change Switch1 to switch port mode dynamic desirable

**Answer:** A

#### NEW QUESTION 17

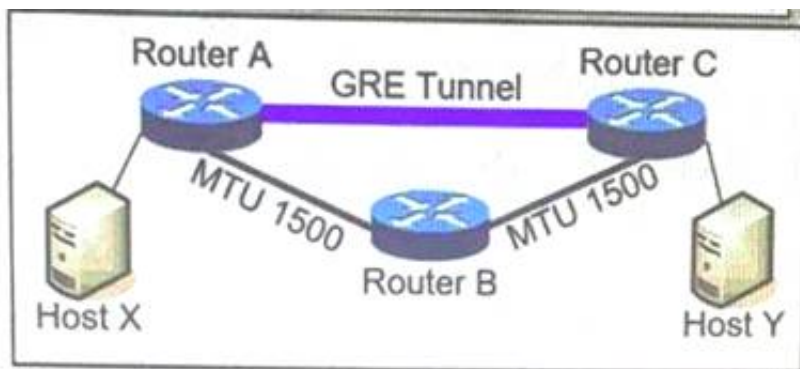
An engineer must provide wireless converge in a square office. The engineer has only one AP and believes that it should be placed it in the middle of the room. Which antenna type should the engineer use?

- A. directional
- B. polarized
- C. Yagi
- D. omnidirectional

**Answer:** D

#### NEW QUESTION 20

Refer to Exhibit.



MTU has been configured on the underlying physical topology, and no MTU command has been configured on the tunnel interfaces. What happens when a 1500-byte IPv4 packet traverses the GRE tunnel from host X to host Y, assuming the DF bit is cleared?

- A. The packet arrives on router C without fragmentation.
- B. The packet is discarded on router A
- C. The packet is discarded on router B
- D. The packet arrives on router C fragmented.

**Answer: D**

**Explanation:**

Text Description automatically generated

Like any protocol, using GRE adds a few bytes to the size of data packets. This must be factored into the MSS and MTU settings for packets. If the MTU is 1,500 bytes and the MSS is 1,460 bytes (to account for the size of the necessary IP and TCP headers), the addition of GRE 24-byte headers will cause the packets to exceed the MTU:

$$1,460 \text{ bytes [payload]} + 20 \text{ bytes [TCP header]} + 20 \text{ bytes [IP header]} + 24 \text{ bytes [GRE header + IP header]} = 1,524 \text{ bytes}$$

As a result, the packets will be fragmented. Fragmentation slows down packet delivery times and increases how much compute power is used, because packets that exceed the MTU must be broken down and then reassembled.

**NEW QUESTION 23**

Which two operations are valid for RESTCONF? (Choose two.)

- A. HEAD
- B. REMOVE
- C. PULL
- D. PATCH
- E. ADD
- F. PUSH

**Answer: AD**

**Explanation:**

RESTCONF operations include OPTIONS, HEAD, GET, POST, PATCH, DELETE.

**NEW QUESTION 27**

Refer to the exhibit.

```
interface Vlan10
ip vrf forwarding Customer1
ip address 192.168.1.1 255.255.255.0
!
interface Vlan20
ip vrf forwarding Customer2
ip address 172.16.1.1 255.255.255.0
!
interface Vlan30
ip vrf forwarding Customer3
ip address 10.1.1.1 255.255.255.0
```

Which configuration allows Customer2 hosts to access the FTP server of Customer1 that has the IP address of 192.168.1.200?

- A. ip route vrf Customer1 172.16.1.0 255.255.255.0 172.16.1.1 globalip route vrf Customer 192.168.1.200 255.255.255.255 192.168.1.1 globalip route 192.168.1.0 255.255.255.0 Vlan10ip route 172.16.1.0 255.255.255.0 Vlan20
- B. ip route vrf Customer1 172.16.1.0 255.255.255.0 172.16.1.1 Customer2ip route vrf Customer 192.168.1.200 255.255.255.255 192.168.1.1 Customer1
- C. ip route vrf Customer1 172.16.1.0 255.255.255.0 172.16.1.1 Customer1ip route vrf Customer 192.168.1.200 255.255.255.255 192.168.1.1 Customer2
- D. ip route vrf Customer1 172.16.1.1 255.255.255.255 172.16.1.1 globalip route vrf Customer 192.168.1.200 255.255.255.0 192.168.1.1 globalip route 192.168.1.0

255.255.255.0 Vlan10ip route 172.16.1.0 255.255.255.0 Vlan20

**Answer:** A

### NEW QUESTION 30

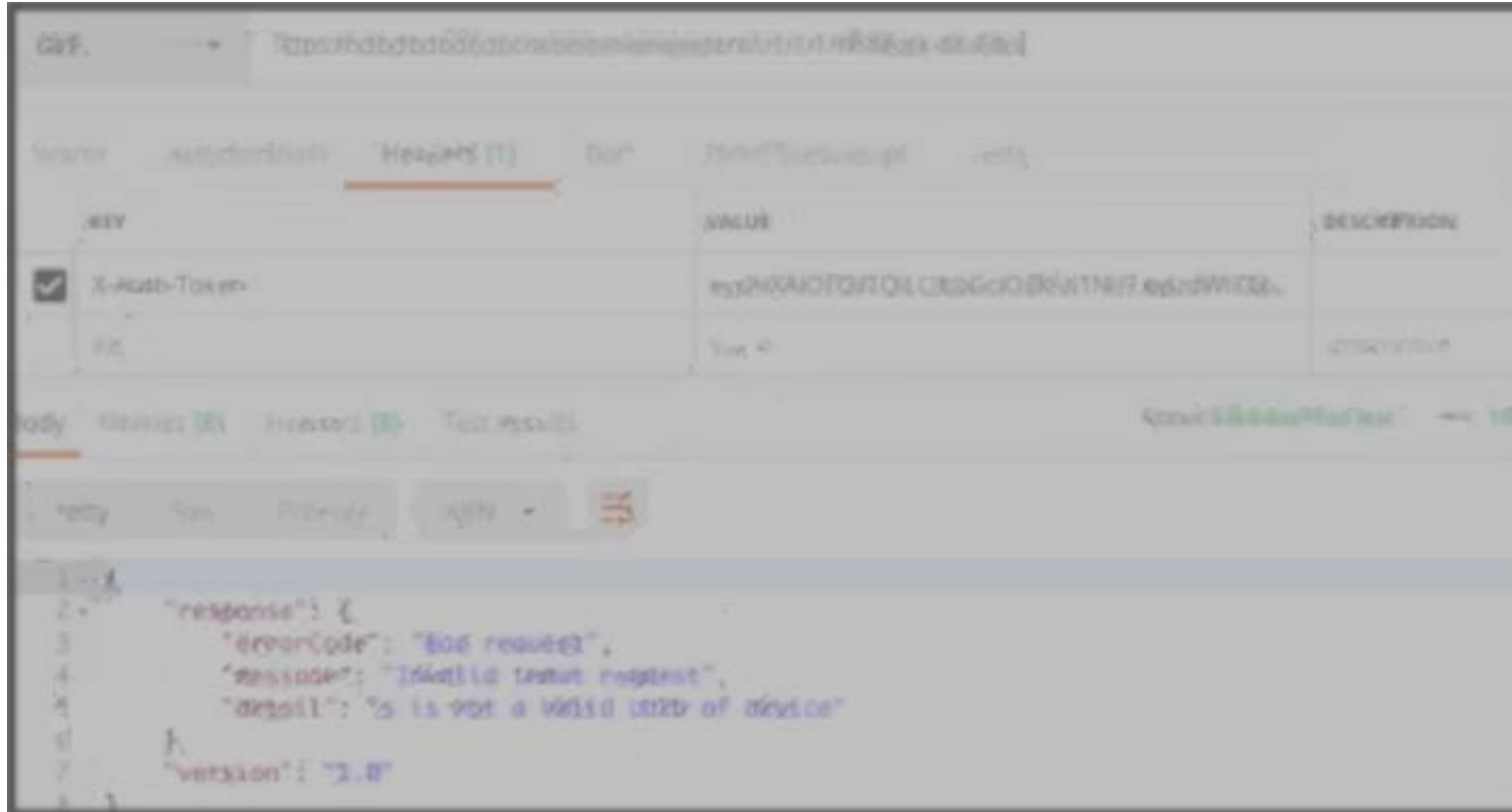
How cloud deployments differ from on-prem deployments?

- A. Cloud deployments require longer implementation times than on-premises deployments
- B. Cloud deployments are more customizable than on-premises deployments.
- C. Cloud deployments require less frequent upgrades than on-premises deployments.
- D. Cloud deployments have lower upfront costs than on-premises deployments.

**Answer:** C

### NEW QUESTION 35

Refer to the exhibit.



POSTMAN is showing an attempt to retrieve network device information from Cisco DNA Center API. What is the issue?

- A. The URI string is incorrect
- B. The token has expired.
- C. Authentication has failed
- D. The JSON payload contains the incorrect UUID

**Answer:** D

### NEW QUESTION 37

What is a consideration when designing a Cisco SD-Access underlay network?

- A. End user subnets and endpoints are part of the underlay network.
- B. The underlay switches provide endpoint physical connectivity for users.
- C. Static routing is a requirement,
- D. It must support IPv4 and IPv6 underlay networks

**Answer:** A

### NEW QUESTION 40

What is the function of a fabric border node in a Cisco SD-Access environment?

- A. To collect traffic flow information toward external networks
- B. To connect the Cisco SD-Access fabric to another fabric or external Layer 3 networks
- C. To attach and register clients to the fabric
- D. To handle an ordered list of IP addresses and locations for endpoints in the fabric.

**Answer:** B

### NEW QUESTION 45

Which design principle states that a user has no access by default to any resource, and unless a resource is explicitly granted, it should be denied?

- A. least privilege
- B. fail-safe defaults
- C. economy of mechanism
- D. complete mediation

**Answer:** B



**NEW QUESTION 50**

What does the cisco REST response indicate?

```
{
  "response": [
    {
      "family": "Routers",
      "interfaceCount": "12",
      "lineCardCount": "9",
      "platformId": "ASR1001-X",
      "reachabilityFailureReason": "",
      "reachabilityStatus": "Reachable",
      "hostname": "RouterASR-1",
      "macAddress": "00:c8:8b:80:bb:00",
    },
    {
      "family": "Switches and Hubs",
      "interfaceCount": "41",
      "lineCardCount": "2",
      "platformId": "C9300-24UX",
      "reachabilityFailureReason": "",
      "reachabilityStatus": "Authentication Failed",
      "hostname": "cat9000-1",
      "macAddress": "78:7b:20:67:62:80",
    },
    {
      "family": "Switches and Hubs",
      "interfaceCount": "56",
      "lineCardCount": "2",
      "platformId": "WS-C3850-48U-E",
      "reachabilityFailureReason": "",
      "reachabilityStatus": "Unreachable",
      "hostname": "cat3850-1",
      "macAddress": "cc:d8:c1:15:d2:80",
    }
  ],
  "version": "1.0"
}
```

- A. Cisco DNA Center has the Incorrect credentials for cat3850-1
- B. Cisco DNA Center is unable to communicate with cat9000-1
- C. Cisco DNA Center has the incorrect credentials for cat9000-1
- D. Cisco DNA Center has the Incorrect credentials for RouterASR-1

**Answer: C**

**NEW QUESTION 52**

What is the output of this code?

```
def get_credentials():
    creds={'username': 'cisco', 'password': 'c3577dc8ae4e36c0bfb6fe5398614245'}
    return (creds.get('username'))

print(get_credentials())
```

- A. username Cisco
- B. get\_credentials
- C. username
- D. CISCO

**Answer: D**

**NEW QUESTION 55**

Drag and drop the snippets onto the blanks within the code to construct a script that configures BGP according to the topology. Not all options are used, and some options may be used twice.



A)

☒ R1(config-if)interface Gi0/0  
R1(config-if)ip ospf network point-to-point

R2(config-if)interface Gi0/0  
R2(config-if)ip ospf network point-to-point

B)

☒ R1(config-if)interface Gi0/0  
R1(config-if)ip ospf network broadcast

R2(config-if)interface Gi0/0  
R2(config-if)ip ospf network broadcast

C)

R1(config-if)interface Gi0/0  
R1(config-if)ip ospf database-filter all out

R2(config-if)interface Gi0/0  
R2(config-if)ip ospf database-filter all out

D)

R1(config-if)interface Gi0/0  
R1(config-if)ip ospf priority 1

R2(config-if)interface Gi0/0  
R2(config-if)ip ospf priority 1

- A. Option A  
B. Option B  
C. Option C  
D. Option D

**Answer: A****Explanation:**

Broadcast and Non-Broadcast networks elect DR/BDR while Point-to-point/ multipoint do not elect DR/BDR. Therefore we have to set the two Gi0/0 interfaces to point-to-point or point-to-multipoint network to ensure that a DR/BDR election does not occur.

**NEW QUESTION 65**

Refer to the exhibit

```
{
  "Cisco-IOS-XE-native:GigabitEthernet": {
    "name": "1",
    "vrf": {
      "forwarding": "MANAGEMENT"
    },
    "ip": {
      "address": {
        "primary": {
          "address": "10.0.0.151",
          "mask": "255.255.255.0"
        }
      }
    },
    "mop": {
      "enabled": false
    },
    "Cisco-IOS-XE-ethernet:negotiation": {
      "auto": true
    }
  }
}
```

Drag and drop the snippets into the RESTCONF request to form the request that returns this response Not all options are used

URL - http://10.10.10.10/restconf/api/running/native/

HTTP Verb-

Body- N/A

Headers- -application/vnd.yang.data+json

Authentication-privileged level 15 credentials

POST	Accept	Cisco-IOS-XE
interface/GigabitEthernet/1/	GET	PUT

- A. Mastered  
B. Not Mastered

**Answer:** A

**Explanation:**

URL - http://10.10.10.10/restconf/api/running/native/

HTTP Verb-

Body- N/A

Headers- -application/vnd.yang.data+json

Authentication-privileged level 15 credentials

POST	Cisco-IOS-XE
	PUT

#### NEW QUESTION 66

Which three elements determine Air Time efficiency? (Choose three)

- A. event-driven RRM  
B. data rate (modulation density) or QAM  
C. channel bandwidth  
D. number of spatial streams and spatial reuse  
E. RF group leader  
F. dynamic channel assignment

**Answer:** ACE

#### NEW QUESTION 71

Running the script causes the output in the exhibit. Which change to the first line of the script resolves the error?



```
import ncclient
```

```
with ncclient.manager.connect(  
    host = '192.168.1.1',  
    port=830,  
    username = 'root',  
    password = 'test398345152!',  
    allow_agent = False) as m:  
    print(m.get_config('running').data_xml)
```

Output

```
$ python get_config.py  
Traceback (most recent call last) :  
  File "get_config.py", line 3, in <module>  
    with ncclient.manager.connect (host = '192.168.1.1, port = 830, username = 'root',  
AttributeError: 'module' object has no attribute 'manager'
```

- A. from ncclient import
- B. import manager
- C. from ncclient import\*
- D. import ncclient manager

**Answer:** A

**NEW QUESTION 73**

which entity is a Type 1 hypervisor?

- A. Oracle VM VirtualBox
- B. VMware server
- C. Citrix XenServer
- D. Microsoft Virtual PC

**Answer:** C

**NEW QUESTION 78**

Drag and drop the characteristics from the left onto the routing protocols they describe on the right.

The default Administrative Distance is equal to 110.	<b>EIGRP</b> <div></div> <div></div> <div></div>
It requires an Autonomous System number to create a routing instance for exchanging routing information.	
It uses virtual links to connect two parts of a partitioned backbone through a non-backbone area.	
It is an Advanced Distance Vector routing protocol.	<b>OSPF</b> <div></div> <div></div> <div></div>
It relies on the Diffused Update Algorithm to calculate the shortest path to a destination.	
It requires a process ID that is local to the router.	

- A. Mastered
- B. Not Mastered

**Answer:** A

**Explanation:**

	<b>EIGRP</b> It requires an Autonomous System number to create a routing instance for exchanging routing information. It is an Advanced Distance Vector routing protocol. It relies on the Diffused Update Algorithm to calculate the shortest path to a destination.
	<b>OSPF</b> The default Administrative Distance is equal to 110. It uses virtual links to connect two parts of a partitioned backbone through a non-backbone area. It requires a process ID that is local to the

**NEW QUESTION 79**

“HTTP/1.1 204 content” is returned when `curl -I -x delete` command is issued. Which situation has occurred?

- A. The object could not be located at the URI path.
- B. The command succeeded in deleting the object
- C. The object was located at the URI, but it could not be deleted.
- D. The URI was invalid

**Answer: B**

**NEW QUESTION 81**

Drag and drop the virtual components from the left onto their descriptions on the right.

VNIC	zip file connecting a virtual machine configuration file and a virtual disk
OVA	file containing a virtual machine disk drive
VMDK	configuration file containing settings for a virtual machine such as guest OS
VMX	component of a virtual machine responsible for sending packets to the hypervisor

- A. Mastered
- B. Not Mastered

**Answer: A**

**Explanation:**

VNIC	zip file connecting a virtual machine configuration file and a virtual disk
OVA	file containing a virtual machine disk drive
VMDK	configuration file containing settings for a virtual machine such as guest OS
VMX	component of a virtual machine responsible for sending packets to the hypervisor

**NEW QUESTION 84**

Drag and drop the characteristics from the left onto the routing protocols they describe on the right.

supports unequal path load balancing	OSPF
link state routing protocol	
distance vector routing protocol	
metric is based on delay and bandwidth by default	EIGRP
makes it easy to segment the network logically	
constructs three tables as part of its operation: neighbor table, topology table, and routing table	

- A. Mastered  
B. Not Mastered

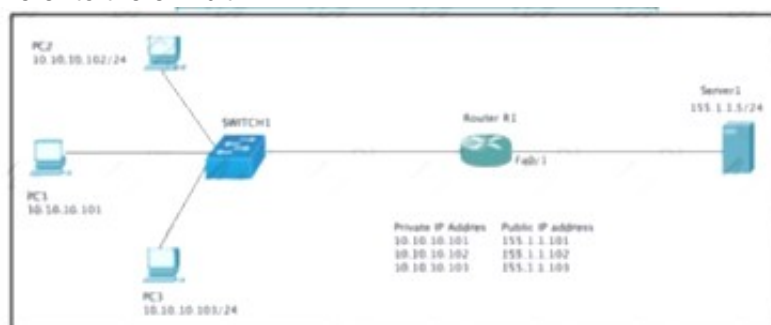
**Answer:** A

**Explanation:**

Diagram Description automatically generated

**NEW QUESTION 86**

Refer to the exhibit.



Which set of commands on router r R1 Allow deterministic translation of private hosts PC1, PC2, and PC3 to addresses in the public space?

A)

```
RouterR1(config)#int f0/0
RouterR1(config-if)#ip nat inside
RouterR1(config-if)#exit
RouterR1(config)#int f0/1
RouterR1(config-if)#ip nat outside
RouterR1(config-if)#exit
RouterR1(config)#ip nat inside source static 10.10.10.101 155.1.1.101
RouterR1(config)#ip nat inside source static 10.10.10.102 155.1.1.102
RouterR1(config)#ip nat inside source static 10.10.10.103 155.1.1.103
```

B)

```
RouterR1(config)#int f0/0
RouterR1(config-if)#ip nat inside
RouterR1(config-if)#exit
RouterR1(config)#int f0/1
RouterR1(config-if)#ip nat outside
RouterR1(config-if)#exit
RouterR1(config)#ip nat inside source static 10.10.10.101 155.1.1.101
RouterR1(config)#ip nat inside source static 10.10.10.102 155.1.1.102
RouterR1(config)#ip nat inside source static 10.10.10.103 155.1.1.103
```

C)

```
RouterR1(config)#int f0/0
RouterR1(config-if)#ip nat inside
RouterR1(config-if)#exit
RouterR1(config)#int f0/1
RouterR1(config-if)#ip nat outside
RouterR1(config-if)#exit
RouterR1(config)#access-list 1 10.10.10.0 0.0.0.255
RouterR1(config)#ip nat pool POOL 155.1.1.101 155.1.1.103 netmask 255.255.255.0
RouterR1(config)#ip nat inside source list 1 pool POOL
```

D)

```
RouterR1(config)#int f0/0
RouterR1(config-if)#ip nat inside
RouterR1(config-if)#exit
RouterR1(config)#int f0/1
RouterR1(config-if)#ip nat outside
RouterR1(config-if)#exit
RouterR1(config)#access-list 1 10.10.10.0 0.0.0.255
RouterR1(config)#ip nat inside source list 1 interface f0/1 overload
```

- A. Option A
- B. Option B
- C. Option C
- D. Option D

**Answer:** A**NEW QUESTION 89**

Refer to the exhibit.

```
Device# configure terminal
Device(config)# netconf ssh acl 1
Device(config)# netconf lock-time 100
Device(config)# netconf max-sessions 1
Device(config)# netconf max-message 10
```

A network engineer must configure NETCONF. After creating the configuration, the engineer gets output from the command show line, but not from show running-config. Which command completes the configuration?

- ☒ Device(config)# netconf lock-time 500
- ☐ Device(config)# netconf max-message 1000
- ☒ Device(config)# no netconf ssh acl 1
- ☐ Device(config)# netconf max-sessions 100

- A. Option A
- B. Option B
- C. Option C
- D. Option D

**Answer:** C**NEW QUESTION 93**

What is used to perform OoS packet classification?

- A. the Options field in the Layer 3 header
- B. the Type field in the Layer 2 frame
- C. the Flags field in the Layer 3 header
- D. the TOS field in the Layer 3 header

**Answer:** D**NEW QUESTION 97**

Refer to the exhibit.



```
ip vrf BLUE
 rd 1:1
!
interface Vlan100
 description GLOBAL_INTERFACE
 ip address 10.10.1.254 255.255.255.0
!
access-list 101 permit ip 10.10.5.0 0.0.0.255 10.10.1.0
255.255.255.0
!
route-map VRF_TO_GLOBAL permit 10
 match ip address 101
 set global
!
interface Vlan500
 description VRF_BLUE
 ip vrf forwarding BLUE
 ip address 10.10.5.254 255.255.255.0
 ip policy route-map VRF_TO_GLOBAL
```

An engineer attempts to create a configuration to allow the Blue VRF to leak into the global routing table, but the configuration does not function as expected. Which action resolves this issue?

- A. Change the access-list destination mask to a wildcard.
- B. Change the source network that is specified in access-list 101.
- C. Change the route-map configuration to VRF\_BLUE.
- D. Change the access-list number in the route map

**Answer:** A

#### NEW QUESTION 99

Refer to the exhibit.

```
<rpc-reply> [0, 1] required
<ok> [0, 1] required
<data> [0, 1] required
<rpc-error> [0, 1] required
<error-type> [0, 1] required
<error-tag> [0, 1] required
<error-severity> [0, 1] required
<error-app-tag> [0, 1] required
<error-path> [0, 1] required
<error-message> [0, 1] required
<error-info> [0, 1] required
<bad-attribute> [0, 1] required
<bad-element> [0, 1] required
<ok-element> [0, 1] required
<err-element> [0, 1] required
<noop-element> [0, 1] required
<bad-namespace> [0, 1] required
<session-id> [0, 1] required
```

Which command is required to verify NETCONF capability reply messages?

- A. show netconf | section rpc-reply
- B. show netconf rpc-reply
- C. show netconf xml rpc-reply
- D. show netconf schema | section rpc-reply

**Answer:** A

#### NEW QUESTION 103

Refer to the exhibit.

```
aaa new-model
aaa authentication login default local-case enable
aaa authentication login ADMIN local-case
username CCNP secret Str0ngP@ssw0rd!
line 0 4
 login authentication ADMIN
```

An engineer must create a configuration that executes the show run command and then terminates the session when user CCNP logs in. Which configuration change is required?

- A. Add the access-class keyword to the username command
- B. Add the access-class keyword to the aaa authentication command
- C. Add the autocmd keyword to the username command

D. Add the autocommand keyword to the aaa authentication command

**Answer: C**

**Explanation:**

The autocommand causes the specified command to be issued automatically after the user logs in. When the command is complete, the session is terminated. Because the command can be any length and can contain embedded spaces, commands using the autocommand keyword must be the last option on the line. In this specific question, we have to enter this line username CCNP autocommand show running-config.

**NEW QUESTION 106**

An engineer is implementing a Cisco MPLS TE tunnel to improve the streaming experience for the clients of a video-on-demand server. Which action must the engineer perform to configure extended discovery to support the MPLS LDP session between the headend and tailend routers?

- A. Configure the interface bandwidth to handle TCP and UDP traffic between the LDP peers
- B. Configure a Cisco MPLS TE tunnel on both ends of the session
- C. Configure an access list on the interface to permit TCP and UDP traffic
- D. Configure a targeted neighbor session.

**Answer: B**

**NEW QUESTION 107**

How is MSDP used to interconnect multiple PIM-SM domains?

- A. MSDP depends on BGP or multiprotocol BGP for mterdomam operation
- B. MSDP SA request messages are used to request a list of active sources for a specific group
- C. SDP allows a rendezvous point to dynamically discover active sources outside of its domain
- D. MSDP messages are used to advertise active sources in a domain

**Answer: A**

**NEW QUESTION 109**

Refer to the exhibit

```
DSW1#sh spanning-tree int fa1/0/7
```

Vlan	Role	Sts	Cost	Prio.	Nbr	Type
VLAN0001	Desg	FWD	2	128.9	P2p	Edge
VLAN0010	Desg	FWD	2	128.9	P2p	Edge
VLAN0020	Desg	FWD	2	128.9	P2p	Edge
VLAN0030	Desg	FWD	2	128.9	P2p	Edge
VLAN0040	Desg	FWD	2	128.9	P2p	Edge

How was spanning-tree configured on this interface?

- A. By entering the command spanning-tree portfast trunk in the interface configuration mode.
- B. By entering the command spanning-tree portfast in the interface configuration mode
- C. By entering the command spanning-tree mst1 vlan 10,20,30,40 in the global configuration mode
- D. By entering the command spanning-tree vlan 10,20,30,40 root primary in the interface configuration mode

**Answer: A**

**NEW QUESTION 110**

Refer to the exhibit.

```
R1#show crypto isakmp sa
```

IPv4 Crypto ISAKMP SA				
dst	src	state	conn-id	status
209.165.201.6	209.165.201.1	QM_IDLE	1001	ACTIVE

After configuring an IPsec VPN, an engineer enters the show command to verify the ISAKMP SA status. What does the status show?

- A. ISAKMP SA is authenticated and can be used for Quick Mode.
- B. Peers have exchanged keys, but ISAKMP SA remains unauthenticated.
- C. VPN peers agreed on parameters for the ISAKMP SA
- D. ISAKMP SA has been created, but it has not continued to form.

**Answer: C**

**NEW QUESTION 111**

Which network devices secure API platform?

- A. next-generation intrusion detection systems
- B. Layer 3 transit network devices
- C. content switches
- D. web application firewalls

**Answer: A**

#### NEW QUESTION 114

Which line must be added in the Python function to return the JSON object {"cat\_9k": "FXS193202SE")?

```
import json
def get_data():
    test_json = """
    {
        "response": [{
            "managementIpAddress": "10.10.2.253",
            "memorySize": "3398345152",
            "serialNumber": "FXS1932Q2SE",
            "softwareVersion": "16.3.2",
            "hostname": "cat_9k"
        }],
        "version": "1.0"
    }
    """
```

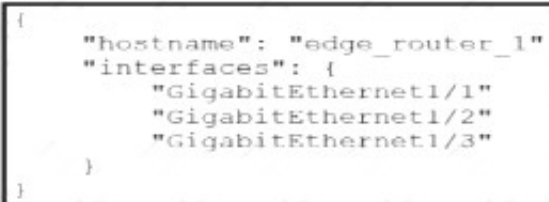
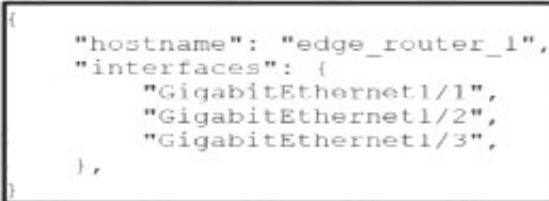
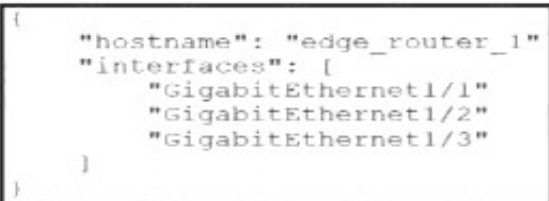
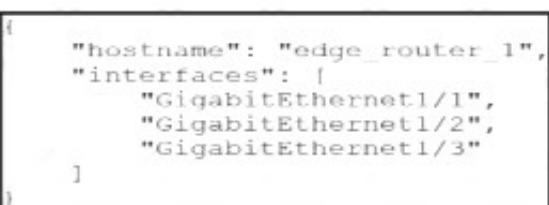
- A)  
return (json.dumps({d['hostname']: d['serialNumber'] for d in json.loads(test\_json)['response']}))
- B)  
return (json.dumps({for d in json.loads(test\_json)['response']: d['hostname']: d['serialNumber']}))
- C)  
return (json.loads({d['hostname']: d['serialNumber'] for d in json.dumps(test\_json)['response']}))
- D)  
return (json.loads({for d in json.dumps(test\_json)['response']: d['hostname']: d['serialNumber']}))

- A. Option A  
B. Option B  
C. Option C  
D. Option D

**Answer: D**

#### NEW QUESTION 119

Which exhibit displays a valid JSON file?

- A. 
- B. 
- C. 
- D. 

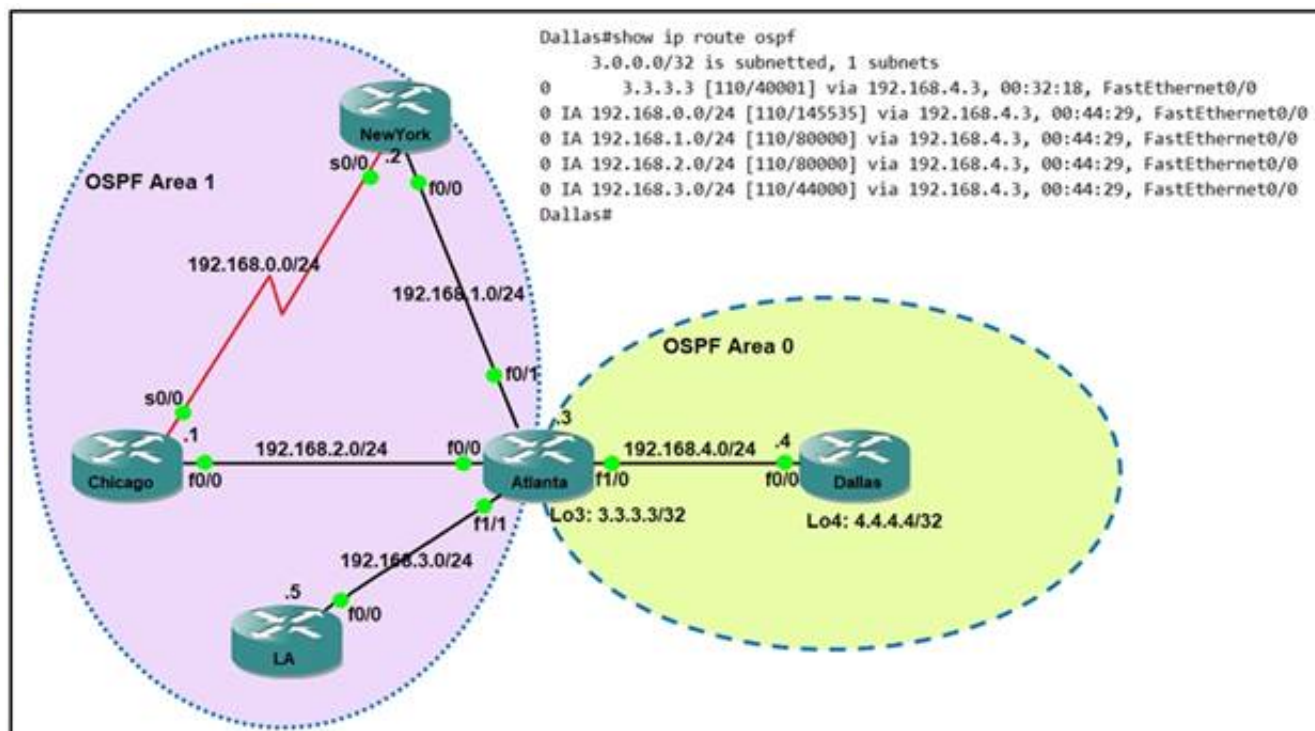
- A. Option A  
B. Option B  
C. Option C  
D. Option D

**Answer: D**

#### NEW QUESTION 124



Refer to the exhibit.



Which command when applied to the Atlanta router reduces type 3 LSA flooding into the backbone area and summarizes the inter-area routes on the Dallas router?

- A. Atlanta(config-route)#area 0 range 192.168.0.0 255.255.248.0
- B. Atlanta(config-route)#area 0 range 192.168.0.0 255.255.252.0
- C. Atlanta(config-route)#area 1 range 192.168.0.0 255.255.252.0
- D. Atlanta(config-route)#area 1 range 192.168.0.0 255.255.248.0

**Answer: C**

#### NEW QUESTION 127

Drag and drop the characteristics from the left onto the routing protocols they describe on the right.

supports virtual links	EIGRP
can automatically summarize networks at the boundary	OSPF
requires manual configuration of network summarization	

- A. Mastered
- B. Not Mastered

**Answer: A**

**Explanation:**

supports virtual links	EIGRP
can automatically summarize networks at the boundary	OSPF
requires manual configuration of network summarization	

#### NEW QUESTION 131

Refer to the exhibit.





Router 1 is currently operating as the HSRP primary with a priority of 110 router1 fails and router2 take over the forwarding role. Which command on router1 causes it to take over the forwarding role when it return to service?

- A. standby 2 priority
- B. standby 2 preempt
- C. standby 2 track
- D. standby 2 timers

**Answer: B**

#### NEW QUESTION 133

Which JSON syntax is valid?

- A) 

```
{ "switch": { "name": "dist1", "interfaces": ["gig1", "gig2", "gig3"] }}
```
- B) 

```
{ 'switch': { 'name': 'dist1', 'interfaces': ['gig1', 'gig2', 'gig3'] }}
```
- C) 

```
{ "switch": { "name": "dist1", "interfaces": ["gig1", "gig2", "gig3"] }}
```
- D) 

```
{ /"switch"/: { /"name"/: "dist1", /"interfaces"/: ["gig1", "gig2", "gig3"] }}
```

- A. Option A
- B. Option B
- C. Option C
- D. Option D

**Answer: C**

#### Explanation:

This JSON can be written as follows:

```
{
  'switch': { 'name': 'dist1',
    'interfaces': ['gig1', 'gig2', 'gig3']
  }
}
```

#### NEW QUESTION 138

After a redundant route processor failure occurs on a Layer 3 device, which mechanism allows for packets to be forwarded from a neighboring router based on the most recent tables?

- A. BFD
- B. RPVST+
- C. RP failover
- D. NSF

**Answer: D**

#### NEW QUESTION 142

Which device makes the decision for a wireless client to roam?

- A. wireless client
- B. wireless LAN controller
- C. access point
- D. WCS location server

**Answer: A**

#### NEW QUESTION 146

Which TCP setting is tuned to minimize the risk of fragmentation on a GRE/IP tunnel?

- A. MTU
- B. Window size
- C. MRU
- D. MSS

**Answer:** D

#### Explanation:

The TCP Maximum Segment Size (TCP MSS) defines the maximum amount of data that a host is willing to accept in a single TCP/IP datagram. This TCP/IP datagram might be fragmented at the IP layer. The MSS value is sent as a TCP header option only in TCP SYN segments. Each side of a TCP connection reports its MSS value to the other side. Contrary to popular belief, the MSS value is not negotiated between hosts. The sending host is required to limit the size of data in a single TCP segment to a value less than or equal to the MSS reported by the receiving host. TCP MSS takes care of fragmentation at the two endpoints of a TCP connection, but it does not handle the case where there is a smaller MTU link in the middle between these two endpoints. PMTUD was developed in order to avoid fragmentation in the path between the endpoints. It is

#### NEW QUESTION 149

Refer to the exhibit.

```
access-list 100 permit gre host 209.165.201.1 host 209.165.201.6

crypto isakmp policy 5
 authentication pre-share
 hash sha256
 encryption aes
 group 14

crypto isakmp key D@t@c3nt3r address 209.165.201.6

crypto ipsec transform-set My_Set esp-aes esp-sha-hmac
 mode transport

crypto map MAP 10 ipsec-isakmp
 set peer 209.165.201.6
 set transform-set My_Set
 match address 100

interface GigabitEthernet0/0
 description outside_interface
 no switchport
 ip address 209.165.201.1 255.255.255.252
 crypto map MAP

interface Tunnel100
 ip address 192.168.100.1 255.255.255.0
 ip mtu 1400
 tunnel source GigabitEthernet0/0
 tunnel destination 209.165.201.6

ip route 10.20.0.0 255.255.255.0 192.168.100.2 Tunnel100
```

```
access-list 100 permit gre host 209.165.201.6 host 209.165.201.1

crypto isakmp policy 5
 authentication pre-share
 hash sha256
 encryption aes
 group 14

crypto isakmp key D@t@c3nt3r address 209.165.201.1

crypto ipsec transform-set My_Set esp-aes esp-sha-hmac
 mode transport

crypto map MAP 10 ipsec-isakmp
 set peer 209.165.201.1
 set transform-set My_Set
 match address 100

Interface GigabitEthernet0/1
 description outside_interface
 no switchport
 ip address 209.165.201.6 255.255.255.252
 crypto map MAP

interface Tunnel100
 ip address 192.168.100.2 255.255.255.0
 ip mtu 1400
 tunnel source GigabitEthernet0/1
 tunnel destination 209.165.201.1

ip route 10.10.0.0 255.255.255.0 192.168.100.1 Tunnel100
```

A network engineer must simplify the IPsec configuration by enabling IPsec over GRE using IPsec profiles. Which two configuration changes accomplish this? (Choose two).

- A. Apply the crypto map to the tunnel interface and change the tunnel mode to tunnel mode ipsec ipv4.
- B. Create an IPsec profile, associate the transform-se
- C. and apply the profile to the tunnel interface.
- D. Remove the crypto map and modify the ACL to allow traffic between 10.10.0.0/24 to 10.20.0.0/24.
- E. Remove all configuration related to crypto map from R1 and R2 and eliminate the ACL [>]
- F. Create an IPsec profile, associate the transform-set AC
- G. and apply the profile to the tunnel interface

**Answer:** AD

#### NEW QUESTION 152

Which two components are supported by LISP? (Choose two.)

- A. Proxy ETR
- B. egress tunnel router
- C. route reflector

- D. HMAC algorithm
- E. spoke

**Answer:** AB

**NEW QUESTION 155**

An engineer is working with the Cisco DNA Center API Drag and drop the methods from the left onto the actions that they are used for on the right.

GET	remove an element using the API
POST	update an element
DELETE	extract information from the API
PUT	create an element

- A. Mastered
- B. Not Mastered

**Answer:** A

**Explanation:**

	DELETE
	PUT
	GET
	POST

**NEW QUESTION 159**

Refer to the exhibit.

```
event snmp oid 1.3.6.1.4.1.9.9.109.1.1.1.1.3 get-type next entry-op gt entry-val 80 poll-interval 5
!
action 1.0 cli command "enable"
action 2.0 syslog msg "high cpu"
action 3.0 cli command "term length 0"
```

An engineer must create a script that appends the output of the show process cpu sorted command to a file.

- A. action 4.0 syslog command "show process cpu sorted | append flash:high-cpu-file"
- B. action 4.0 publish-event "show process cpu sorted | append flash:high-cpu-file"
- C. action 4.0 ens-event "show process cpu sorted | append flash:high-cpu-file"
- D. action 4.0 cli command "show process cpu sorted | append flash:high-cpu-file"

**Answer:** D

**NEW QUESTION 161**

A network engineer must configure a router to send logging messages to a syslog server based on these requirements:

- uses syslog IP address: 10.10.10.1
- uses a reliable protocol
- must not use any well-known TCP/UDP ports

Which configuration must be used?

- A. logging host 10.10.10.1 transport tcp port 1024

- B. logging origin-id 10.10.10.1
- C. logging host 10.10.10.1 transport udp port 1023
- D. logging host 10.10.10.1 transport udp port 1024

**Answer:** A

#### NEW QUESTION 165

What does Call Admission Control require the client to send in order to reserve the bandwidth?

- A. SIP flow information
- B. Wi-Fi multimedia
- C. traffic specification
- D. VoIP media session awareness

**Answer:** D

#### NEW QUESTION 170

Which two mechanisms are available to secure NTP? (Choose two.)

- A. IP prefix list-based
- B. IPsec
- C. TACACS-based authentication
- D. IP access list-based
- E. Encrypted authentication

**Answer:** DE

#### NEW QUESTION 175

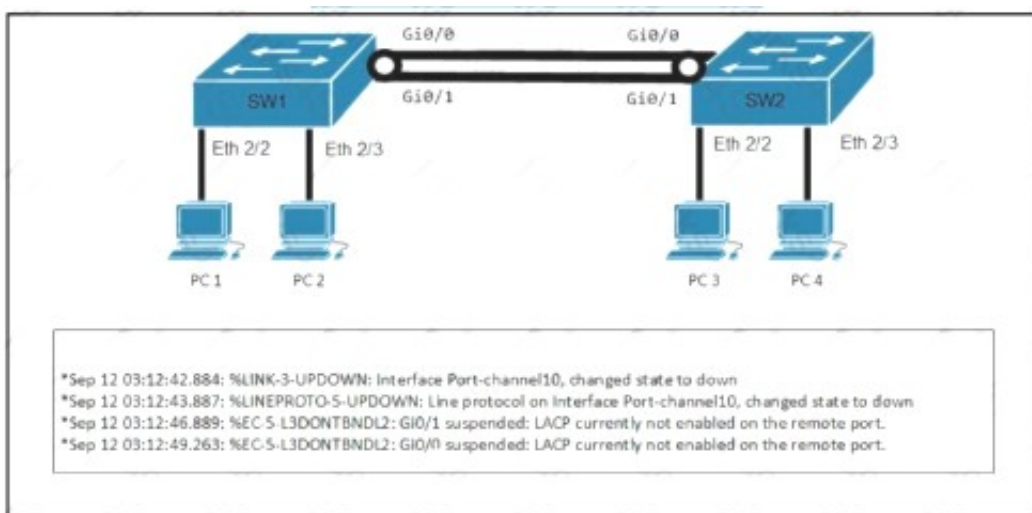
In an SD-WAN deployment, which action in the vSmart controller responsible for?

- A. handle, maintain, and gather configuration and status for nodes within the SD-WAN fabric
- B. distribute policies that govern data forwarding performed within the SD-WAN fabric
- C. gather telemetry data from vEdge routers
- D. onboard vEdge nodes into the SD-WAN fabric

**Answer:** B

#### NEW QUESTION 178

Refer to the exhibit.



A network engineer troubleshoots an issue with the port channel between SW1 and SW2. which command resolves the issue?

A)

**SW1(config-if)#channel-group 10 mode desirable**

B)

**SW1(config-if)#channel-group 10 mode active**

C)

**SW2(config-if)#switchport mode trunk**

D)

**SW2(config-if)#channel-group 10 mode on**

- A. Option A
- B. Option B
- C. Option C
- D. Option D

**Answer:** B



#### NEW QUESTION 179

Refer to the exhibit.

```
RP/0/0/CPU0:R2#debug isis adjacencies
RP/0/0/CPU0:Apr 2 20:57:00.421 : isis[1010]: RECV P2P IIH (L2)
from GigabitEthernet0/0/0/0 SNPA fal6.3ebe.a7bc: System ID R2,
Holdtime 30, length 1429
RP/0/0/CPU0:Apr 2 20:57:01.761 : isis[1010]: SEND P2P IIH (L1)
on GigabitEthernet0/0/0/0: Holdtime 30s, Length 41
```

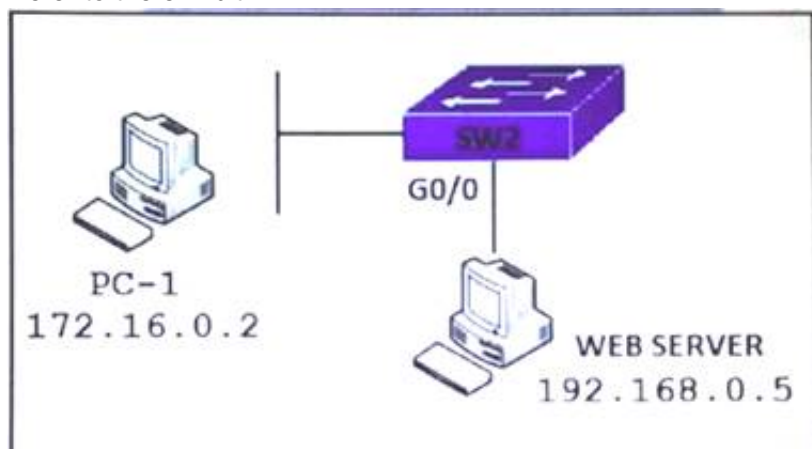
A network operator is attempting to configure an IS-IS adjacency between two routers, but the adjacency cannot be established. To troubleshoot the problem, the operator collects this debugging output. Which interfaces are misconfigured on these routers?

- A. The peer router interface is configured as Level 1 only, and the R2 interface is configured as Level 2 only
- B. The R2 interface is configured as Level 1 only, and the Peer router interface is configured as Level 2 only
- C. The R2 interface is configured as point-to-point, and the peer router interface is configured as multipoint.
- D. The peer router interface is configured as point-as-point, and the R2 interface is configured as multipoint.

**Answer: C**

#### NEW QUESTION 182

Refer to the exhibit.



PC-1 must access the web server on port 8080. To allow this traffic, which statement must be added to an access control list that is applied on SW2 port G0/0 in the inbound direction?

- A. permit host 172.16.0.2 host 192.168.0.5 eq 8080
- B. permit host 192.168.0.5 host 172.16.0.2 eq 8080
- C. permit host 192.168.0.5 eq 8080 host 172.16.0.2
- D. permit host 192.168.0.5 it 8080 host 172.16.0.2

**Answer: C**

#### Explanation:

The inbound direction of G0/0 of SW2 only filter traffic from Web Server to PC-1 so the source IP address and port is of the Web Server.

#### NEW QUESTION 185

A network is being migrated from IPV4 to IPV6 using a dual-stack approach. Network management is already 100% IPV6 enabled. In a dual-stack network with two dual-stack NetFlow collections, how many flow exporters are needed per network device in the flexible NetFlow configuration?

- A. 1
- B. 2
- C. 4
- D. 8

**Answer: B**

#### NEW QUESTION 189

Refer to the exhibit.

```
Router# traceroute 10.10.10.1

Type escape sequence to abort.
Tracing the route to 10.10.10.1

 0  10.0.0.1  5 msec  5 msec  5 msec
 1  10.5.0.1  15 msec  17 msec  17 msec
 2  10.10.10.1  *  *  *
```

An engineer is troubleshooting a connectivity issue and executes a traceoute. What does the result confirm?

- A. The destination server reported it is too busy
- B. The protocol is unreachable
- C. The destination port is unreachable
- D. The probe timed out

Answer: B

#### NEW QUESTION 192

Refer to the exhibit.

```
aaa new-model
aaa authentication login authorizationlist tacacs+
tacacs-server host 192.168.0.202
tacacs-server key ciscotestkey
line vty 0 4
login authentication authorizationlist
```

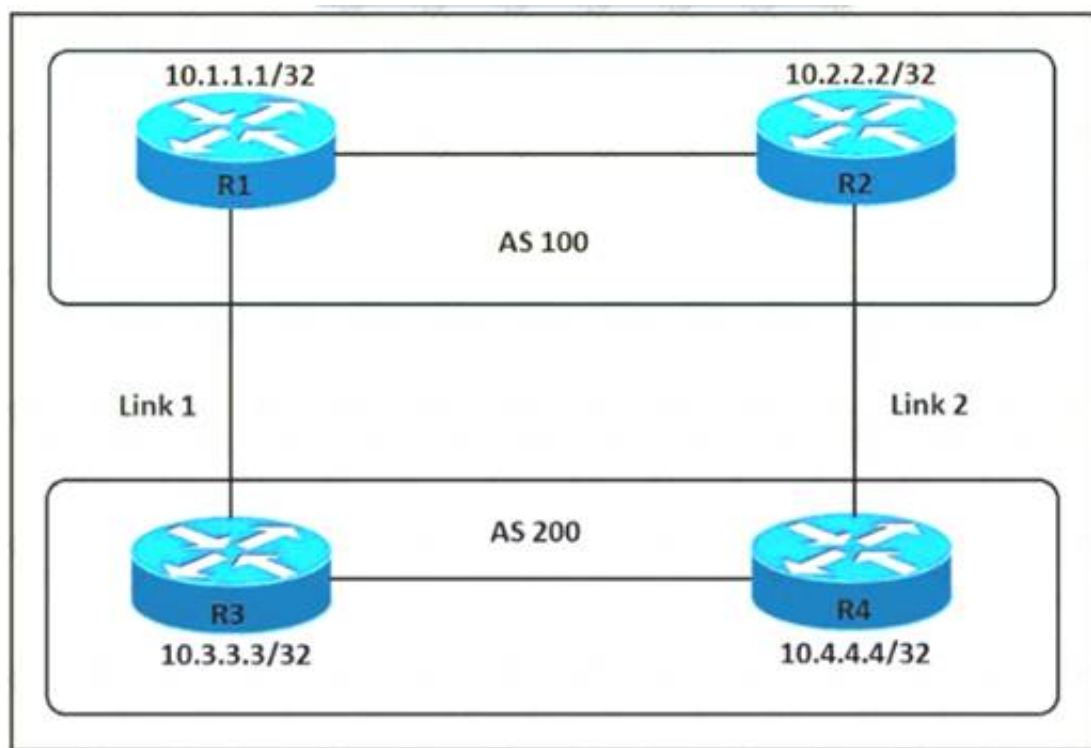
What is the effect of this configuration?

- A. When users attempt to connect to vty lines 0 through 4, the device will authenticate them against TACACS+ if local authentication fails
- B. The device will authenticate all users connecting to vty lines 0 through 4 against TACACS+
- C. The device will allow users at 192.168.0.202 to connect to vty lines 0 through 4 using the password ciscotestkey
- D. The device will allow only users at 192.166.0.202 to connect to vty lines 0 through 4

Answer: B

#### NEW QUESTION 197

Refer to the exhibit.



An engineer must ensure that all traffic leaving AS 200 will choose Link 2 as the exit point. Assuming that all BGP neighbor relationships have been formed and that the attributes have not been changed on any of the routers, which configuration accomplish task?

- A. R4(config-router)bgp default local-preference 200
- B. R3(config-router)neighbor 10.1.1.1 weight 200
- C. R3(config-router)bgp default local-preference 200
- D. R4(config-router)nighbor 10.2.2.2 weight 200

Answer: A

#### Explanation:

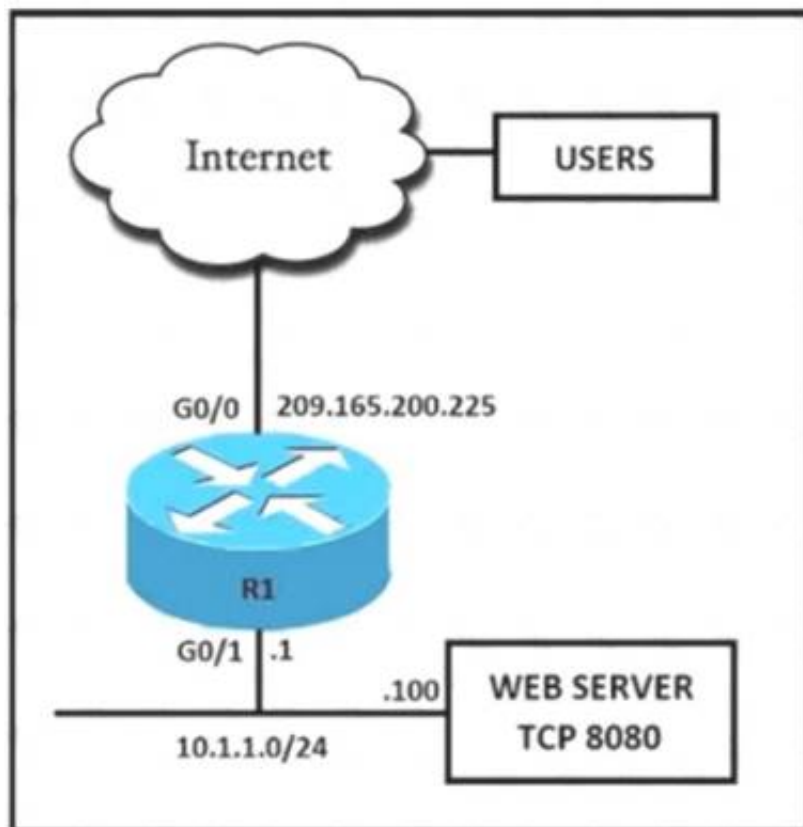
Local preference is an indication to the AS about which path has preference to exit the AS in order to reach a certain network. A path with a higher local preference is preferred. The default value for local preference is 100.

Unlike the weight attribute, which is only relevant to the local router, local preference is an attribute that routers exchange in the same AS. The local preference is set with the “bgp default local-preference value” command.

In this case, both R3 & R4 have exit links but R4 has higher local-preference so R4 will be chosen as the preferred exit point from AS 200.

#### NEW QUESTION 199

Refer to the exhibit.



External users require HTTP connectivity to an internal company web server that is listening on TCP port 8080. Which command set accomplishes this requirement?

A)

```
interface G0/0
ip address 209.165.200.225 255.255.255.224
ip nat inside
```

```
interface G0/1
ip address 10.1.1.1 255.255.255.0
ip nat outside
```

```
ip nat inside source static tcp 10.1.1.1 8080 209.165.200.225 80
```

B)

```
interface G0/0
ip address 209.165.200.225 255.255.255.224
ip nat outside
```

```
interface G0/1
ip address 10.1.1.1 255.255.255.0
ip nat inside
```

```
ip nat inside source static tcp 10.1.1.100 8080 interface G0/0 80
```

C)

```
interface G0/0
ip address 209.165.200.225 255.255.255.224
ip nat inside
```

D)

```
interface G0/0
ip address 209.165.200.225 255.255.255.224
ip nat inside
```

```
interface G0/1
ip address 10.1.1.1 255.255.255.0
ip nat outside
```

E)

- A. Option A
- B. Option B
- C. Option C
- D. Option D
- E. Option E

Answer: B

#### NEW QUESTION 202

Refer to the exhibit.

```
SW1#sh monitor session all
Session 1
-----
Type                : Remote Destination Session
Source RSPAN VLAN   : 50

Session 2
-----
Type                : Local Session
Source Ports        :
  Both              : Fa0/14
Destination Ports   : Fa0/15
Encapsulation       : Native
Ingress             : Disables
```

An engineer configures monitoring on SW1 and enters the show command to verify operation. What does the output confirm?

- A. SPAN session 1 monitors activity on VLAN 50 of a remote switch
- B. SPAN session 2 only monitors egress traffic exiting port FastEthernet 0/14.
- C. SPAN session 2 monitors all traffic entering and exiting port FastEthernet 0/15.
- D. RSPAN session 1 is incompletely configured for monitoring

Answer: D

#### Explanation:

SW1 has been configured with the following commands:

SW1(config)#monitor session 1 source remote vlan 50 SW1(config)#monitor session 2 source interface fa0/14 SW1(config)#monitor session 2 destination interface fa0/15

The session 1 on SW1 was configured for Remote SPAN (RSPAN) while session 2 was configured for local SPAN. For RSPAN we need to configure the destination port to complete the configuration.

Note: In fact we cannot create such a session like session 1 because if we only configure Source RSPAN VLAN 50 (with the command monitor session 1 source remote vlan 50) then we will receive a Type: Remote Source Session (not Remote Destination Session).

#### NEW QUESTION 205

What is the centralized control policy in a Cisco SD-WAN deployment?

- A. list of ordered statements that define user access policies
- B. set of statements that defines how routing is performed
- C. set of rules that governs nodes authentication within the cloud
- D. list of enabled services for all nodes within the cloud

Answer: B

#### NEW QUESTION 206

How is Layer 3 roaming accomplished in a unified wireless deployment?

- A. An EoIP tunnel is created between the client and the anchor controller to provide seamless connectivity as the client is associated with the new AP.
- B. The client entry on the original controller is passed to the database on the new controller.
- C. The new controller assigns an IP address from the new subnet to the client
- D. The client database on the original controller is updated the anchor entry, and the new controller database is updated with the foreign entry.

Answer: A

#### NEW QUESTION 211

Drag and drop the wireless elements on the left to their definitions on the right.

beamwidth	a graph that shows the relative intensity of the signal strength of an antenna within its space
polarization	the relative increase in signal strength of an antenna in a given direction
radiation patterns	measures the angle of an antenna pattern in which the relative signal strength is half-power below the maximum value
gain	radiated electromagnetic waves that influence the orientation of an antenna within its electromagnetic field

- A. Mastered
- B. Not Mastered



**Answer:** A

**Explanation:**

Chart, line chart Description automatically generated

**NEW QUESTION 212**

Refer to the exhibit.

The screenshot shows the Cisco WLAN security configuration interface. The 'Security' tab is selected, and the 'Layer 3' sub-tab is active. The configuration includes the following settings:

- Fast Transition:** Unchecked.
- Protected Management Frame (PMF):** Disabled.
- WPA+WPA2 Parameters:**
  - WPA Policy: Unchecked.
  - WPA2 Policy-AES: Checked.
- Authentication Key Management:**
  - 802.1X: Unchecked.
  - CCKM: Unchecked.
  - PSK: Checked.
  - FT 802.1X: Unchecked.
  - FT PSK: Unchecked.
  - PSK Format: ASCII.

Based on the configuration in this WLAN security setting, Which method can a client use to authenticate to the network?

- A. text string
- B. username and password
- C. certificate
- D. RADIUS token

**Answer:** A

**NEW QUESTION 215**

How cloud deployments differ from on-prem deployments?

- A. Cloud deployments require longer implementation times than on-premises deployments
- B. Cloud deployments are more customizable than on-premises deployments.
- C. Cloud deployments require less frequent upgrades than on-premises deployments.
- D. Cloud deployments have lower upfront costs than on-premises deployments.

**Answer:** B

**NEW QUESTION 220**

A server running Linux is providing support for virtual machines along with DNS and DHCP services for a small business. Which technology does this represent?

- A. container
- B. Type 1 hypervisor
- C. hardware pass-thru
- D. Type 2 hypervisor

**Answer:** D

**NEW QUESTION 224**

How does an on-premises infrastructure compare to a cloud infrastructure?

- A. On-premises can increase compute power faster than cloud
- B. On-premises requires less power and cooling resources than cloud
- C. On-premises offers faster deployment than cloud
- D. On-premises offers lower latency for physically adjacent systems than cloud.

**Answer:** D

**NEW QUESTION 225**

Which three methods does Cisco DNA Centre use to discover devices? (Choose three)

- A. CDP
- B. SNMP

- C. LLDP
- D. ping
- E. NETCONF
- F. a specified range of IP addresses

**Answer:** ACF

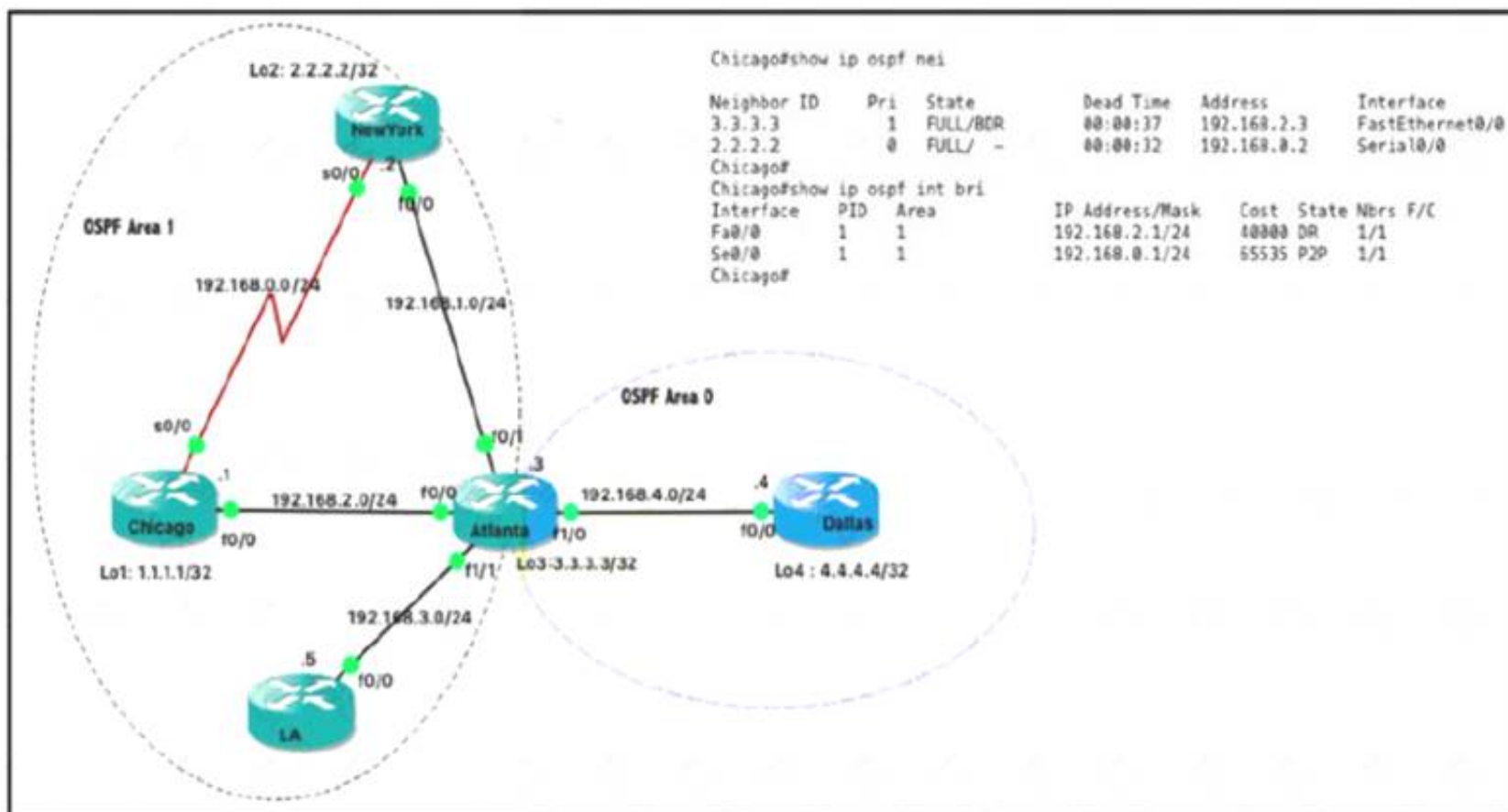
**Explanation:**

There are three ways for you to discover devices:

- Use Cisco Discovery Protocol (CDP) and provide a seed IP address.
- Specify a range of IP addresses. (A maximum range of 4096 devices is supported.)
- Use Link Layer Discovery Protocol (LLDP) and provide a seed IP address.

**NEW QUESTION 230**

Refer the exhibit.



Which router is the designated router on the segment 192.168.0.0/24?

- A. This segment has no designated router because it is a nonbroadcast network type.
- B. This segment has no designated router because it is a p2p network type.
- C. Router Chicago because it has a lower router ID
- D. Router NewYork because it has a higher router ID

**Answer:** B

**NEW QUESTION 233**

Refer to the exhibit.

```
Router#show ip ospf interface
GigabitEthernet0/1.40 is up, line protocol is up
  Internet Address 10.3.5.254/24, Area 0, Attached via Network Statement
  Process ID 1, Router ID 172.16.11.29, Network Type BROADCAST, Cost: 1
  Topology-MTID Cost Disabled Shutdown Topology Name
    0          1    no      no      Base
  Transmit Delay is 1 sec, State DR, Priority 1
  Designated Router (ID) 172.16.11.29, Interface address 10.3.5.254
  No backup designated router on this network
  Timer intervals configured, Hello 10, Dead 40, Wait 40, Retransmit 5
    oob-resync timeout 40
  No Hellos (Passive interface)
  Supports Link-local Signaling (LLS)
  ! lines omitted for brevity
GigabitEthernet0/1 is up, line protocol is up
  Internet Address 172.16.30.1/24, Area 0, Attached via Network Statement
  Process ID 1, Router ID 172.16.11.29, Network Type BROADCAST, Cost: 1
  Topology-MTID Cost Disabled Shutdown Topology Name
    0          1    no      no      Base
  Transmit Delay is 1 sec, State DR, Priority 1
  Designated Router (ID) 172.16.11.29, Interface address 172.16.30.1
  No backup designated router on this network
  Timer intervals configured, Hello 10, Dead 40, Wait 40, Retransmit 5
    oob-resync timeout 40
  No Hellos (Passive interface)
  Supports Link-local Signaling (LLS)
  ! lines omitted for brevity
GigabitEthernet0/0 is up, line protocol is up
  Internet Address 172.16.11.29/24, Area 0, Attached via Network Statement
  Process ID 1, Router ID 172.16.11.29, Network Type BROADCAST, Cost: 1
  Topology-MTID Cost Disabled Shutdown Topology Name
    0          1    no      no      Base
  Transmit Delay is 1 sec, State DROTHER, Priority 1
  Designated Router (ID) 172.16.11.27, Interface address 172.16.11.27
  Backup Designated router (ID) 172.16.11.30, Interface address 172.16.11.30
  Timer intervals configured, Hello 10, Dead 40, Wait 40, Retransmit 5
    oob-resync timeout 40
  Hello due in 00:00:07
  Supports Link-local Signaling (LLS)
  ! lines omitted for brevity
```

A network engineer configures OSPF and reviews the router configuration. Which interface or interface or interface are able to establish OSPF adjacency?

- A. GigabitEthernet0/1 and GigabitEthernet0/1.40
- B. only GigabitEthernet0/1
- C. only GigabitEthernet0/0
- D. Gigabit Ethernet0/0 and GigabitEthernet0/1

**Answer: C**

#### NEW QUESTION 237

Drag and drop the characteristics from the left onto the protocols they apply to on the right?

uses Dijkstra's Shortest Path First algorithm	OSPF
uses Diffused Update Algorithm	
uses bandwidth, delay, reliability, and load for routing metric	EIGRP
uses an election process	

- A. Mastered
- B. Not Mastered

**Answer: A**

#### Explanation:

Diagram Description automatically generated

#### NEW QUESTION 242

Refer to the exhibit.

```
with manager connect(host=192.168.0.1, port=22,
  username='admin', password='password1', hostkey_verify=True,
  device_params={'name':'nexus'}) as m
```

What does the snippet of code achieve?



- A. It creates a temporary connection to a Cisco Nexus device and retrieves a token to be used for API calls.
- B. It opens a tunnel and encapsulates the login information, if the host key is correct.
- C. It opens an ncclient connection to a Cisco Nexus device and maintains it for the duration of the context.
- D. It creates an SSH connection using the SSH key that is stored, and the password is ignored.

**Answer:** C

**Explanation:**

ncclient is a Python library that facilitates client-side scripting and application development around the NETCONF protocol.  
The above Python snippet uses the ncclient to connect and establish a NETCONF session to a Nexus device (which is also a NETCONF server).

**NEW QUESTION 243**

An engineer configures HSRP group 37. The configuration does not modify the default virtual MAC address. Which virtual MAC address does the group use?

- A. C0:00:00:25:00:00
- B. 00:00:0c:07:ac:37
- C. C0:39:83:25:258:5
- D. 00:00:0c:07:ac:25

**Answer:** D

**NEW QUESTION 248**

The login method is configured on the VTY lines of a router with these parameters.

- The first method for authentication is TACACS
- If TACACS is unavailable, login is allowed without any provided credentials

Which configuration accomplishes this task?

- A. R1#sh run | include aaa aaa new-modelaaa authentication login VTY group tacacs+ none aaa session-id commonR1#sh run | section vty line vty 0 4password 7 0202039485748R1#sh run | include username R1#
- B. R1#sh run | include aaa aaa new-modelaaa authentication login telnet group tacacs+ none aaa session-id commonR1#sh run | section vty line vty 0 4R1#sh run | include username R1#
- C. R1#sh run | include aaa aaa new-modelaaa authentication login default group tacacs+ none aaa session-id commonR1#sh run | section vty line vty 0 4password 7 0202039485748
- D. R1#sh run | include aaa aaa new-modelaaa authentication login default group tacacs+ aaa session-id commonR1#sh run | section vty line vty 0 4transport input none R1#

**Answer:** C

**Explanation:**

According to the requirements (first use TACACS+, then allow login with no authentication), we have to use “aaa authentication login ... group tacacs+ none” for AAA command.

The next thing to check is the if the “aaa authentication login default” or “aaa authentication login list-name” is used. The ‘default’ keyword means we want to apply for all login connections (such as tty, vty, console and aux). If we use this keyword, we don’t need to configure anything else under tty, vty and aux lines. If we don’t use this keyword then we have to specify which line(s) we want to apply the authentication feature.

From above information, we can find out answer 'R1#sh run | include aaa aaa new-model  
aaa authentication login default group tacacs+ none aaa session-id common  
R1#sh run | section vty line vty 0 4  
password 7 0202039485748

If you want to learn more about AAA configuration, please read our AAA TACACS+ and RADIUS Tutorial – Part 2.

For your information, answer 'R1#sh run | include aaa aaa new-model  
aaa authentication login telnet group tacacs+ none aaa session-id common  
R1#sh run | section vty line vty 0 4  
R1#sh run | include username

R1#' would be correct if we add the following command under vty line (“line vty 0 4”): “login authentication telnet” (“telnet” is the name of the AAA list above)

**NEW QUESTION 253**

Drag and drop the Qos mechanisms from the left to the correct descriptions on the right

service policy	mechanism to create a scheduler for packets prior to forwarding
policy map	mechanism to apply a QoS policy to an interface
DSCP	portion of the IP header used to classify packets

- A. Mastered
- B. Not Mastered

**Answer:** A



**Explanation:**

A picture containing diagram Description automatically generated

**NEW QUESTION 257**

Refer to the exhibit.

```

S - Hot-standby (LACP only)
R - Layer3 S - Layer2
U - in use f - failed to allocate aggregator
M - not in use, minimum links not met
u - unsuitable for bundling
w - waiting to be aggregated
d - default port
Number of channel-groups in use: 1
Number of aggregators: 1
Group Port-channel Protocol Ports
-----+-----
-----
1 Po1(S D ) EAgr Gi0/0(1) Gi0/1(1)

SW3# show etherchannel summary
Flags: D - down F - bundled in port-channel
I - stand-alone s - suspended
S - Hot-standby (LACP only)
R - Layer3 S - Layer2
U - in use f - failed to allocate aggregator
M - not in use, minimum links not met
u - unsuitable for bundling
w - waiting to be aggregated
d - default port
Number of channel-groups in use: 1
Number of aggregators: 1
Group Port-channel Protocol Ports
-----+-----
-----
1 Po1(S D ) LACP Gi0/0(1) Gi0/1(1)

```

Which action resolves the EtherChannel issue between SW2 and SW3?

- A. Configure switchport mode trunk on SW2.
- B. Configure switchport nonegotiate on SW3
- C. Configure channel-group 1 mode desirable on both interfaces.
- D. Configure channel-group 1 mode active on both interfaces.

**Answer: D**

**NEW QUESTION 260**

Which measure is used by an NTP server to indicate its closeness to the authoritative time source?

- A. latency
- B. hop count
- C. time zone
- D. stratum

**Answer: D**

**NEW QUESTION 261**

Which outbound access list, applied to the WAN interface of a router, permits all traffic except for http traffic sourced from the workstation with IP address 10.10.10.1?

- A)  
ip access-list extended 100  
deny tcp host 10.10.10.1 any eq 80  
permit ip any any
- B)  
ip access-list extended 200  
deny tcp host 10.10.10.1 eq 80 any  
permit ip any any
- C)  
ip access-list extended NO\_HTTP  
deny tcp host 10.10.10.1 any eq 80
- D)  
ip access-list extended 10  
deny tcp host 10.10.10.1 any eq 80  
permit ip any any

- A. Option A
- B. Option B
- C. Option C
- D. Option D

Answer: A

#### NEW QUESTION 262

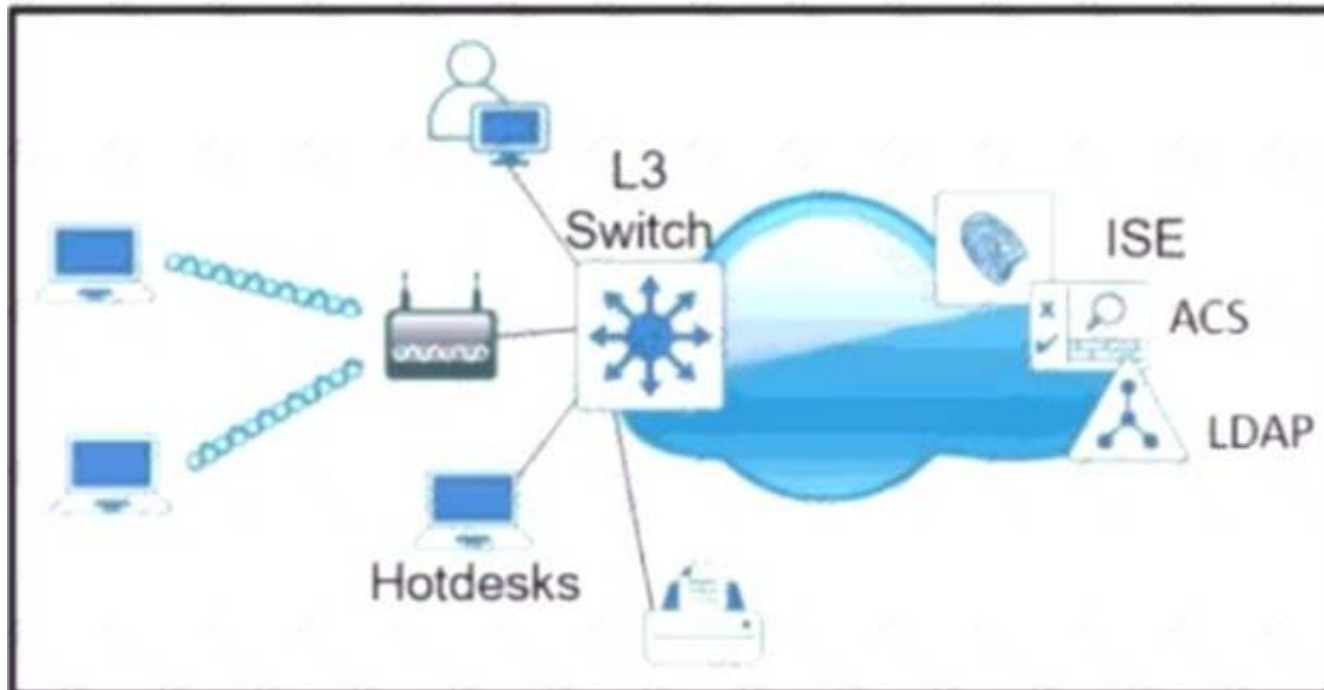
What is the function of a VTEP in VXLAN?

- A. provide the routing underlay and overlay for VXLAN headers
- B. dynamically discover the location of end hosts in a VXLAN fabric
- C. encapsulate and de-encapsulate traffic into and out of the VXLAN fabric
- D. statically point to end host locations of the VXLAN fabric

Answer: C

#### NEW QUESTION 263

Refer to the exhibit



Which single security feature is recommended to provide Network Access Control in the enterprise?

- A. MAB
- B. 802.1X
- C. WebAuth
- D. port security sticky MAC

Answer: B

#### NEW QUESTION 266

What is a benefit of data modeling languages like YANG?

- A. They enable programmers to change or write their own application within the device operating system.
- B. They create more secure and efficient SNMP OIDs.
- C. They make the CLI simpler and more efficient.
- D. They provide a standardized data structure, which results in configuration scalability and consistency.

Answer: D

#### Explanation:

Yet Another Next Generation (YANG) is a language which is only used to describe data models (structure). It is not XML or JSON.

#### NEW QUESTION 270

Graphical user interface, text, application, email Description automatically generated

```
Script
import ncclient

with ncclient.manager.connect(host='192.168.1.1', port=830, username='root', password='test123',
    allow_agent=False) as m:
    print(m.get_config('running').data_xml)

Output
$ python get_config.py
Traceback (most recent call last):
  File "get_config.py", line 3, in <module>
    with ncclient.manager.connect(host='192.168.1.1', port=830, username='root',
AttributeError: 'module' object has no attribute 'manager'
```

Refer to the Exhibit. Running the script causes the output in the exhibit. What should be the first line of the script?

- A. from ncclient import manager

- B. import manager
- C. from ncclient import \*
- D. ncclient manager import

**Answer:** C

**NEW QUESTION 275**

.....

## Thank You for Trying Our Product

\* 100% Pass or Money Back

All our products come with a 90-day Money Back Guarantee.

\* One year free update

You can enjoy free update one year. 24x7 online support.

\* Trusted by Millions

We currently serve more than 30,000,000 customers.

\* Shop Securely

All transactions are protected by VeriSign!

**100% Pass Your 350-401 Exam with Our Prep Materials Via below:**

<https://www.certleader.com/350-401-dumps.html>