

## 500-220 Dumps

### Engineering Cisco Meraki Solutions

<https://www.certleader.com/500-220-dumps.html>



**NEW QUESTION 1**

One thousand concurrent users stream video to their laptops. A 30/70 split between 2.4 GHz and 5 GHz is used. Based on client count, how many APs (rounded to the nearest whole number) are needed?

- A. 26
- B. 28
- C. 30
- D. 32

**Answer:** C

**NEW QUESTION 2**

What happens to an unsupervised iOS device when the “Meraki management” profile is removed?

- A. The “Meraki management” profile is remove
- B. All configuration profiles that Systems Manager pushed remain.
- C. The “Meraki management” profile is remove
- D. All configuration profiles that Systems Manager pushed are also removed.
- E. The “Meraki management” profile is removed and then pushed automatically by Systems Manager.
- F. The “Meraki management” profile cannot be removed.

**Answer:** B

**NEW QUESTION 3**

What are two roles of the network and device tags in a Dashboard? (Choose two.)

- A. Tags enable administrators to configure a combination of network and device specific tags to create summary reports filtered for specific devices across multiple networks.
- B. Network tags can be used to assign networks to separate Auto VPN domains in an Organization with many networks.
- C. Network tags can be used to simplify the assignment of network-level permissions in an Organization with many networks.
- D. Device tags can be used to simplify the assignment of device-level permissions in an Organization with many administrators.
- E. Device tags can be assigned to MR APs to influence the gateway selection for repeaters in a mesh wireless network.

**Answer:** AE

**NEW QUESTION 4**

In an organization that uses the Co-Termination licensing model, which two operations enable licenses to be applied? (Choose two.)

- A. Renew the Dashboard license.
- B. License a network.
- C. License more devices.
- D. Call Meraki support.
- E. Wait for the devices to auto-renew.

**Answer:** AC

**NEW QUESTION 5**

When an SSID is configured with Sign-On Splash page enabled, which two settings must be configured for unauthenticated clients to have full network access and not be allow listed? (Choose two.)

- A. Controller disconnection behavior
- B. Captive Portal strength
- C. Simultaneous logins
- D. Firewall & traffic shaping
- E. RADIUS for splash page settings

**Answer:** AB

**NEW QUESTION 6**

Which two actions can extend the video retention of a Cisco Meraki MV Smart Camera? (Choose two.)

- A. enabling audio compression
- B. installing an SSD memory extension
- C. enabling motion-based retention
- D. enabling maximum retention limit
- E. configuring a recording schedule

**Answer:** CE

**NEW QUESTION 7**

Refer to the exhibit.

## Recent 802.1X failure



For an AP that displays this alert, which network access control method must be in use?

- A. preshared key
- B. WPA2-enterprise with my RADIUS server
- C. splash page with my RADIUS server
- D. MAC-based access control with RADIUS server

**Answer: A**

### NEW QUESTION 8

Refer to the exhibit.

#### Route table

SUBNET	NAME	TYPE	SORT BY
<input type="text" value="Search by subnet"/>	<input type="text" value="Search by name"/>	<input type="text" value="All"/>	<input type="text" value="Priority"/>
Subnet	Name	Type	Next hop
10.115.32.0/28	Store 1532 – appliance: MGMT	Meraki VPN: VLAN	Peer: Store 1532 – appliance
10.116.32.0/28	Store 1532 – appliance: DATA	Meraki VPN: VLAN	Peer: Store 1532 – appliance
192.39.2.28/32	External	BGP	10.128.124.62
192.168.70.8/29	MSP NOC	IPSec Peer	4.99.111.99
192.168.70.0/29	MSP NOC	IPSec Peer	4.100.99.100
192.39.228.0/24	External	BGP	10.128.124.62
192.168.0.0/16	External	BGP	10.128.124.62

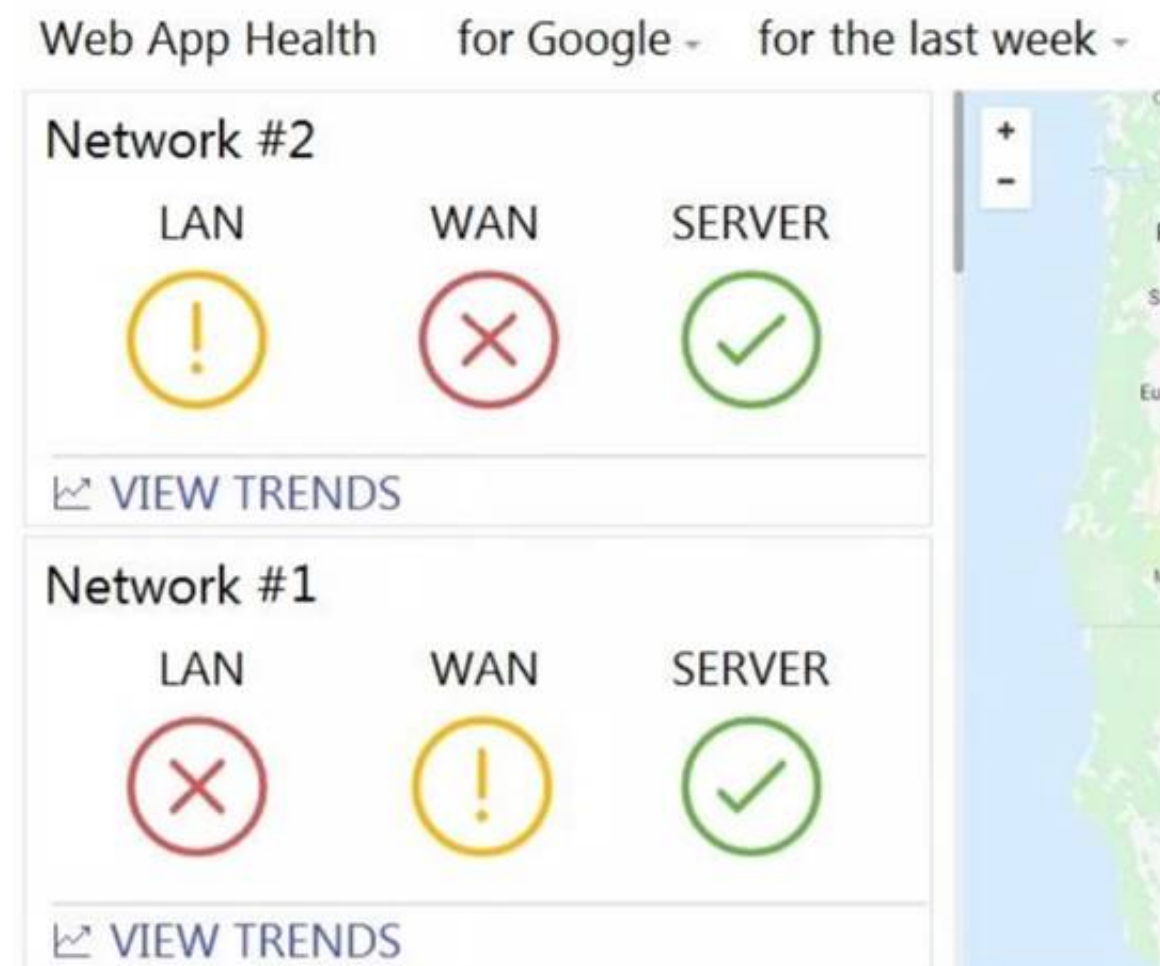
A packet arrives on the VPN concentrator with source IP 10.168.70.3 and destined for IP 10.116.32.4. What is the next hop for the packet, based on this concentrator routing table?

- A. The concentrator gateway (10.128.124.62) is the next hop.
- B. Not enough detail is available to determine the next hop.
- C. The packet is stopped.
- D. The Auto VPN peer “Store 1532 – appliance” is the next hop.

**Answer: B**

### NEW QUESTION 9

Refer to the exhibit.



What are two outcomes reflected in the Web App Health application? (Choose two.)

- A. Users on both networks may be experiencing issues when attempting to reach Google.
- B. Network #1 could not load Google because of a remote server issue.
- C. Network #2 had better application performance than Network #1.
- D. Network #2 could not load Google because of a local client misconfiguration.
- E. Neither network recorded any server-side performance issues.

Answer: BE

**NEW QUESTION 10**

Refer to the exhibit.

**Uplink selection**

**Global preferences**

Primary uplink	WAN 1 ▾
Load balancing	<input type="radio"/> Enabled Traffic will be spread across both uplinks in the proportions specified above. Management traffic to the Meraki cloud will use the primary uplink. <input checked="" type="radio"/> Disabled All Internet traffic will use the primary uplink unless overridden by an uplink preference or if the primary uplink fails.
Active-Active AutoVPN	<input checked="" type="radio"/> Enabled Create VPN tunnels over all of the available uplinks (primary and secondary). <input type="radio"/> Disabled Do not create VPN tunnels over the secondary uplink unless the primary uplink fails.

**Flow preferences**

Internet traffic	There are no uplink preferences for Internet traffic configured on this network. <a href="#">Add a preference</a>
------------------	--

**SD-WAN policies**

VPN traffic	<b>Uplink selection policy</b> Use the uplink that's best for VoIP traffic. Prefer WAN 2. Fail over if poor performance for "Conf" <a href="#">Add a preference</a>	<b>Traffic filters</b> All VoIP & video conferencing WebEx	<b>Actions</b> + × + ×										
Custom performance classes	<table><thead><tr><th>Name</th><th>Maximum latency (ms)</th><th>Maximum jitter (ms)</th><th>Maximum loss (%)</th><th>Actions</th></tr></thead><tbody><tr><td>Conf</td><td>200</td><td>50</td><td>5</td><td>×</td></tr></tbody></table> <a href="#">Create a new custom performance class</a>	Name	Maximum latency (ms)	Maximum jitter (ms)	Maximum loss (%)	Actions	Conf	200	50	5	×		
Name	Maximum latency (ms)	Maximum jitter (ms)	Maximum loss (%)	Actions									
Conf	200	50	5	×									

Assuming this MX has established a full tunnel with its VPN peer, how will the MX route the WebEx traffic?

- A. WebEx traffic will prefer WAN 2 as long as it meets the thresholds in the "Conf" performance class.
- B. WebEx traffic will prefer WAN 1 as it is the primary uplink.
- C. WebEx traffic will prefer WAN 2 as long as it is up.
- D. WebEx traffic will be load-balanced between both active WAN links.

Answer: B

**NEW QUESTION 10**

Drag and drop the descriptions from the left onto the corresponding MX operation mode on the right.

The MX appliance acts as a layer 2 bridge	<b>Routed mode</b> <div></div> <div></div> <div></div> <div></div>
This mode is the default mode of operation	
DHCP services can be configured on the MX appliance	
VLANs cannot be configured	
This mode is generally also the default gateway for devices on the LAN	<b>Passthrough mode</b> <div></div> <div></div> <div></div> <div></div>
This mode is not recommended at the network perimeter	
No address translation is provided	
Client traffic to the internet has the source IP rewritten to match the WAN IP of the appliance	



- A. Mastered
- B. Not Mastered

**Answer:** A

**Explanation:**

Graphical user interface, table Description automatically generated with medium confidence

**NEW QUESTION 11**

Refer to the exhibit.

Outbound rules	#	Policy	Protocol	Source	Src port	Destination	Dst port	Comment	Logging	Hits	Actions
		Allow	Any	Any	Any	Any	Any	Default rule	Enabled	2	
Add a rule											

Which outcome occurs when logging is set to Enabled?

- A. Outbound flows are sent to a configured syslog server if a syslog sender is configured for flows.
- B. The hits counter within this section is now enabled.
- C. This firewall rule is now enabled.
- D. Inbound flows are sent to a configured syslog server if a syslog server configured for flows.

**Answer:** D

**NEW QUESTION 13**

For which two reasons can an organization become “Out of License”? (Choose two.)

- A. licenses that are in the wrong network
- B. more hardware devices than device licenses
- C. expired device license
- D. licenses that do not match the serial numbers in the organization
- E. MR licenses that do not match the MR models in the organization

**Answer:** BC

**NEW QUESTION 18**

Refer to the exhibit.

Security Center the last 2 weeks ▾

Search events

Filter ▾ 158 matching events

Summary

Events

Time	Type	Source	Destination	Disposition	Action	Details
May 30 21:22:50	IDS Alert	Desktop [redacted] 10	a104-96-113-137 deploy.static.akamaitech nologies.com	Blocked	MALWARE-CNC	Win.Trojan.Cridex variant outbound connection
May 30 21:22:46	IDS Alert	Desktop [redacted] 10	a104-96-113-137 deploy.static.akamaitech nologies.com	Blocked	MALWARE-CNC	Win.Trojan.Cridex variant outbound connection
May 30 21:22:46	IDS Alert	Desktop [redacted] 10	a104-96-113-137 deploy.static.akamaitech nologies.com	Blocked	MALWARE-CNC	Win.Trojan.Cridex variant outbound connection
May 30 21:22:46	IDS Alert	Desktop [redacted] 10	a104-96-113-137 deploy.static.akamaitech nologies.com	Blocked	MALWARE-CNC	Win.Trojan.Cridex variant outbound connection

MALWARE-CNC Win.Trojan.Cridex variant outbound connection

Rule ID

1-31772

Whitelist

On

Off

Links

www.virustotal.com

Actions

Rule details

Inspect picklist

Show this signature only

Which IDS/IPS mode is the MX Security Appliance configured for?

- A. quarantine
- B. prevention
- C. detection
- D. blocking

**Answer:** B

**NEW QUESTION 20**

Refer to the exhibit.

[Add a preference](#)

- Change the primary uplink to "none".
- Add an internet traffic preference that defines the load-balancing ratio as 4:1.
- Enable load balancing.
- Set the speed of the cellular uplink to zero.
- Change the assigned speeds of WAN 1 and WAN 2 so that the ratio is 4:1.

A. highest VLAN ID that is configured and set to NO to use VPN  
B. lowest VLAN ID that is configured and set to YES to use VPN  
C. highest VLAN ID that is configured and set to YES to use VPN  
D. lowest VLAN ID configured and set to NO to use VPN

- A. For IPsec tunneling, peers use high UDP ports within the 32768 to 61000 range.
- B. Peers contact the VPN registry at UDP port 9350.
- C. For IPsec tunneling, peers use high TCP ports within the 32768 to 61000 range.

- D. Peers contact the VPN registry at TCP port 9350.
- E. For IPsec tunneling, peers use UDP ports 500 and 4500.

**Answer:** BC

#### NEW QUESTION 35

Air Marshal has contained a malicious SSID.  
What are two effects on connectivity? (Choose two.)

- A. Currently associated clients stay connected.
- B. New clients can connect.
- C. Currently associated clients are affected by restrictive traffic shaping rules.
- D. New clients cannot connect.
- E. Currently associated clients are disconnected.

**Answer:** DE

#### NEW QUESTION 40

Which Cisco Meraki product must be deployed in addition to Systems Manager so that Systems Manager Sentry enrollment can be used?

- A. MS Switch
- B. Meraki Insight
- C. MR Access Point
- D. MV Smart Camera

**Answer:** C

#### NEW QUESTION 45

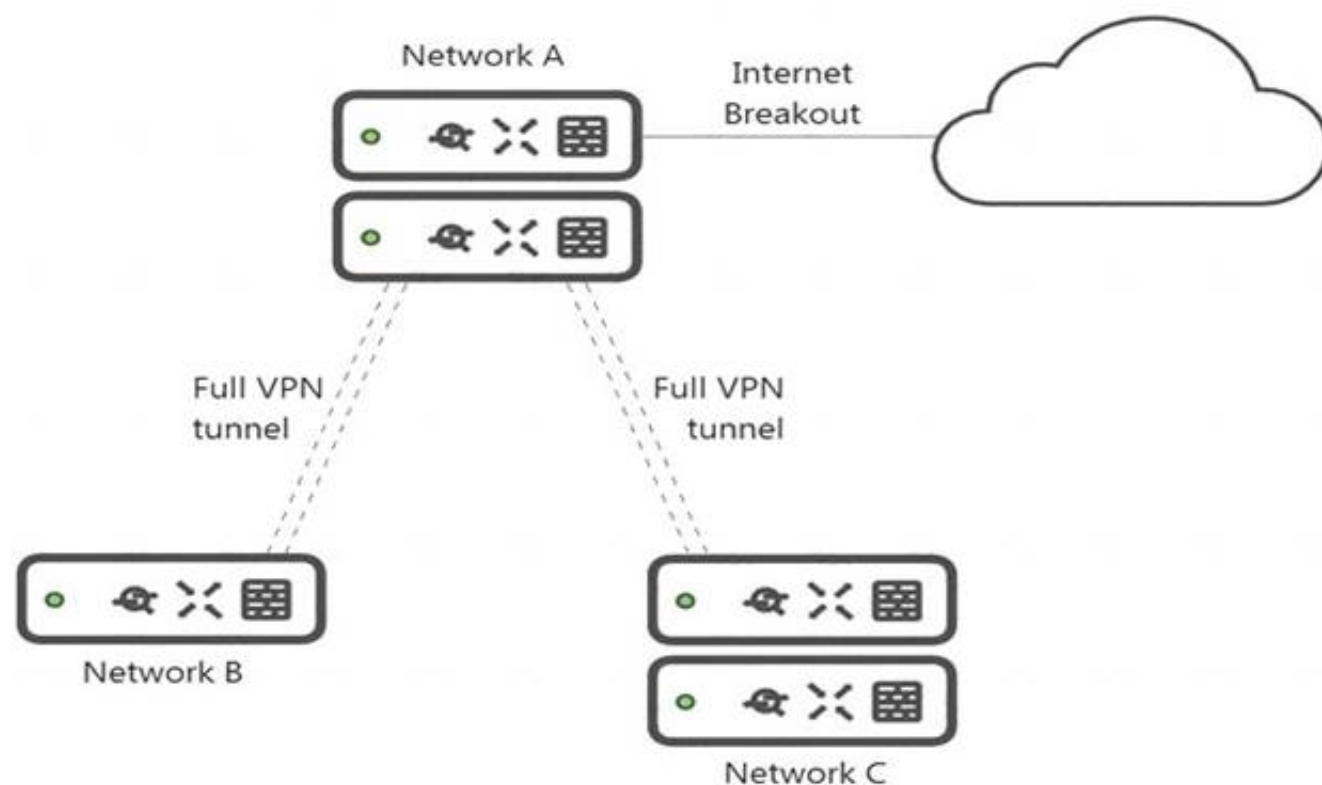
Which Cisco Meraki best practice method preserves complete historical network event logs?

- A. Configuring the preserved event number to maximize logging.
- B. Configuring the preserved event period to unlimited.
- C. Configuring a syslog server for the network.
- D. Configuring Dashboard logging to preserve only certain event types.

**Answer:** A

#### NEW QUESTION 50

Refer to the exhibit.



What is the minimal Cisco Meraki Insight licensing requirement?

- A. A single Meraki Insight license must be configured on network A to gain Web App Health visibility on network B.
- B. A single Meraki Insight license must be configured on network B to gain Web App Health visibility on network B.
- C. A single Meraki Insight license must be configured on network A, and a single license must be configured on network B, to gain Web App Health visibility on network B.
- D. Two Meraki Insight licenses must be configured on network A to gain Web App Health visibility on network B.
- E. Two Meraki Insight licenses must be configured on network A and a single license must be configured on network B, to gain Web App Health visibility on network B.

**Answer:** E

#### NEW QUESTION 55

A customer requires a hub-and-spoke Auto VPN deployment with two NAT-mode hubs with dual uplink connections and 50 remote sites with a single uplink connection.  
How many tunnels does each hub need to support?

- A. 52
- B. 54
- C. 100
- D. 104

**Answer:** C

**NEW QUESTION 57**

.....



## Thank You for Trying Our Product

\* 100% Pass or Money Back

All our products come with a 90-day Money Back Guarantee.

\* One year free update

You can enjoy free update one year. 24x7 online support.

\* Trusted by Millions

We currently serve more than 30,000,000 customers.

\* Shop Securely

All transactions are protected by VeriSign!

**100% Pass Your 500-220 Exam with Our Prep Materials Via below:**

<https://www.certleader.com/500-220-dumps.html>