

Snowflake

Exam Questions SnowPro-Core

SnowPro Core Certification Exam



NEW QUESTION 1

- (Exam Topic 1)

Which interfaces can be used to create and/or manage Virtual Warehouses?

- A. The Snowflake Web Interface (UI)
- B. SQL commands
- C. Data integration tools
- D. All of the above

Answer: D

Explanation:

Reference: <https://docs.snowflake.com/en/user-guide/warehouses.html>

NEW QUESTION 2

- (Exam Topic 1)

What services does Snowflake automatically provide for customer that they may have been responsible for with their on premise system? Select all the below that apply.

- A. Installing and configuring hardware
- B. Patching software
- C. Physical security
- D. Maintaining metadata and statistics

Answer: ABD

NEW QUESTION 3

- (Exam Topic 1)

What is the most granular object that the Time Travel retention period can be defined on? Select one.

- A. Account
- B. Database
- C. Schema
- D. Table

Answer: D

Explanation:

Reference: <https://docs.snowflake.com/en/user-guide/data-time-travel.html#data-retention-period>

NEW QUESTION 4

- (Exam Topic 1)

Which of the following accurately represents how a table fits into Snowflake's logical container hierarchy? Select one.

- A. Account -> Schema -> Database -> Table
- B. Account -> Database -> Schema -> Table
- C. Database -> Schema -> Table -> Account
- D. Database -> Table -> Schema -> Account

Answer: B

Explanation:

Reference: <https://docs.snowflake.com/en/sql-reference/ddl-database.html>

NEW QUESTION 5

- (Exam Topic 1)

Data storage for individual tables can be monitored using which commands and/or object(s)? Choose 2 answers

- A. SHOW TABLES;
- B. SHOW STORAGE BY TABLE;
- C. Information Schema -> TABLE_STORAGE_METRICS
- D. Information Schema -> TABLE_HISTORY

Answer: AC

NEW QUESTION 6

- (Exam Topic 1)

Which of the following best describes where Snowflake's metadata is stored?

- A. Within the data files
- B. Inside the Virtual Warehouses
- C. In the Cloud Services Layer
- D. within the drivers

Answer: C

NEW QUESTION 7

- (Exam Topic 1)

A deterministic query is run at 8am, takes 5 minutes, and the results are cached. Which of the following statements are true?

Choose 2 answers

- A. The exact query will ALWAYS return the precomputed result set for the RESULT_CACHE_ACTIVE = time period
- B. The same exact query will return the precomputed results if the underlying data hasn't changed and the results were last accessed within the previous 24 hour period
- C. The same exact query will return the precomputed results even if the underlying data has changed as long as the results were last accessed within the previous 24 hour period
- D. The "24 hour" on the precomputed results gets renewed every time the exact query is executed

Answer: BD

Explanation:

The results cache will only be used if it's the same query AND the same role executing the query

NEW QUESTION 8

- (Exam Topic 1)

True or False: When a new Snowflake object is created, it is automatically owned by the user who created it.

- A. True
- B. False

Answer: A

Explanation:

Reference: <https://docs.snowflake.com/en/user-guide/security-access-control-overview.html>

NEW QUESTION 9

- (Exam Topic 1)

True or False: Micro-partition metadata enables some operations to be completed without requiring Compute.

- A. True
- B. False

Answer: A

Explanation:

Reference: <https://blog.ippon.tech/innovative-snowflake-features-caching/>

NEW QUESTION 10

- (Exam Topic 1)

True or False: A customer using SnowSQL / native connectors will be unable to use the Snowflake Web interface (UI) unless access to the UI is explicitly granted by supported.

- A. True
- B. False

Answer: B

Explanation:

Reference: <https://docs.snowflake.com/en/user-guide/connecting.html>

NEW QUESTION 10

- (Exam Topic 1)

Which of the following statements are true of VALIDATION_MODE in Snowflake? (Choose two.)

- A. The validation_mode option is used when creating an Internal Stage
- B. validation_mode=return_all_errors is a parameter of the copy command
- C. The validation_mode option will validate data to be loaded by the copy statement while completing the load and will return the rows that could not be loaded without error
- D. The validation_mode option will validate data to be loaded by the copy statement without completing the load and will return possible errors

Answer: BD

Explanation:

Reference: <https://docs.snowflake.com/en/user-guide/data-load-bulk-ts.html>

NEW QUESTION 13

- (Exam Topic 1)

Which statement best describes "clustering"?

- A. Clustering represents the way data is grouped together and stored within snowflake's micro-partitions
- B. The database administrator must define the clustering methodology for each Snowflake table.
- C. The clustering key must be included on the COPY command when loading data into Snowflake.
- D. Clustering can be disabled within a Snowflake account.

Answer: A

Explanation:

Reference: <https://docs.snowflake.com/en/user-guide/tables-clustering-micropartitions.html>

NEW QUESTION 15

- (Exam Topic 1)

How a Snowpipe charges calculated?

- A. Per-second/per Warehouse size
- B. Per-second/per-core granularity
- C. Number of Pipes in account
- D. Total storage bucket size

Answer: B

Explanation:

Reference: <https://docs.snowflake.com/en/user-guide/data-load-snowpipe-billing.html>

NEW QUESTION 18

- (Exam Topic 1)

Which of the following are examples of operations that require a Virtual Warehouse to complete, assuming no quires have been executed previously?

Choose 3 answers

- A. MIN(< < column value>>)
- B. COPY
- C. SUM(<< column value >>)
- D. UPDATE

Answer: BCD

NEW QUESTION 21

- (Exam Topic 1)

Which item in the Data Warehouse migration process does not apply in Snowflake? (Select two)

- A. Migrate Users
- B. Migrate Schemas
- C. Migrate Indexes
- D. Build the Data pipeline

Answer: CD

NEW QUESTION 26

- (Exam Topic 1)

True or False: When data share is established between a Data Provider and a data Consumer, the Data Consumer can extend that data share to other Data Consumers.

- A. True
- B. False

Answer: B

Explanation:

Reference: <https://docs.snowflake.com/en/user-guide/data-sharing-intro.html>

NEW QUESTION 30

- (Exam Topic 1)

What is the minimum Snowflake edition that provides data sharing?

- A. Standard
- B. Premier
- C. Enterprise
- D. Business Critical Edition

Answer: A

Explanation:

Reference: <https://docs.snowflake.com/en/user-guide/intro-editions.html#data-sharing>

NEW QUESTION 34

- (Exam Topic 1)

If a Small Warehouse is made up of 2 servers/cluster, how many servers/cluster make up a Medium Warehouse?

- A. 4
- B. 16
- C. 32

D. 128

Answer: A

Explanation:

Reference: <https://docs.snowflake.com/en/user-guide/warehouses-overview.html>

NEW QUESTION 36

- (Exam Topic 1)

The PUT command: (Choose two.)

- A. Automatically creates a File Format object
- B. Automatically uses the last Stage created
- C. Automatically compresses files using Gzip
- D. Automatically encrypts files

Answer: CD

Explanation:

Reference: <https://docs.snowflake.com/en/sql-reference/sql/put.html>

NEW QUESTION 40

- (Exam Topic 1)

When scaling out by adding clusters to a multi-cluster warehouse, you are primarily scaling for improved:

- A. Concurrency
- B. Performance

Answer: A

Explanation:

Reference: <https://docs.snowflake.com/en/user-guide/warehouses-multiclust.html>

NEW QUESTION 44

- (Exam Topic 1)

Which of the following roles is recommended to be used to create and manage users and roles?

- A. SYSADMIN
- B. SECURITYADMIN
- C. PUBLIC
- D. ACCOUNTADMIN

Answer: B

Explanation:

<https://docs.snowflake.com/en/user-guide/security-access-control-overview.html>

"Security admin: Role that can manage any object grant globally, as well as create, monitor, and manage users and roles"

NEW QUESTION 47

- (Exam Topic 1)

Select the different types of Internal Stages: (Choose three.)

- A. Named Stage
- B. User Stage
- C. Table Stage
- D. Schema Stage

Answer: ABC

Explanation:

Reference: <https://dwgeek.com/type-of-snowflake-stages-how-to-create-and-use.html/#Snowflake-Internal- Named-Stage>

NEW QUESTION 52

- (Exam Topic 1)

Which of the following commands sets the Virtual Warehouse for a session?

- A. COPT WAREHOUSE FROM <<Config file> ;
- B. SET warehouse = <<warehouse name>>;
- C. USE WAREHOUSE <<warehouse name>>;
- D. USE VIRTUAL_WAREHOUSE <<warehouse name>>;

Answer: C

Explanation:

Reference: <https://docs.snowflake.com/en/user-guide/warehouses-tasks.html>

NEW QUESTION 53

- (Exam Topic 1)

True or False: It is possible to query data from an Internal or named External stage without loading the data into Snowflake.

- A. True
- B. False

Answer: A

NEW QUESTION 58

- (Exam Topic 1)

True or False: You can resize a Virtual Warehouse while queries are running.

- A. True
- B. False

Answer: A

Explanation:

Reference: <https://docs.snowflake.com/en/user-guide/warehouses-tasks.html>

NEW QUESTION 60

- (Exam Topic 1)

True or False: Reader Accounts incur no additional Compute costs to the Data Provider since they are simply reading the shared data without making changes.

- A. True
- B. False

Answer: B

Explanation:

Reference: <https://interworks.com/blog/bdu/2020/02/05/zero-to-snowflake-secure-data-sharing/>

NEW QUESTION 64

- (Exam Topic 1)

Which of the following statements is true of Snowflake?

- A. It was built specifically for the cloud
- B. It was built as an on-premises solution and then ported to the cloud
- C. It was designed as a hybrid database to allow customers to store data either on premises or in the cloud
- D. It was built for Hadoop architecture
- E. It's based on an Oracle Architecture

Answer: A

Explanation:

Reference: <https://www.stitchdata.com/resources/snowflake/>

NEW QUESTION 66

- (Exam Topic 1)

Which of the following languages can be used to implement Snowflake User Defined Functions (UDFs)? Choose 2 answers

- A. Java
- B. JavaScript
- C. SQL
- D. Python

Answer: BC

Explanation:

Reference: <https://docs.snowflake.com/en/sql-reference/user-defined-functions.html>

NEW QUESTION 70

- (Exam Topic 1)

Fail-safe is unavailable on which table types?

- A. Temporary
- B. Transient
- C. Provisional
- D. Permanent

Answer: AB

Explanation:

Reference: <https://docs.snowflake.com/en/user-guide/tables-temp-transient.html>

NEW QUESTION 75

- (Exam Topic 1)

Increasing the size of a Virtual Warehouse from an X-Small to an X-Large is an example of:

- A. Scaling rhythmically
- B. Scaling max
- C. Scaling out
- D. Scaling up

Answer: D

NEW QUESTION 79

- (Exam Topic 1)

If auto-suspend is enable for a Virtual Warehouse, he Warehouse is automatically suspended when:

- A. All Snowflake sessions using the warehouse are terminated.
- B. The last query using the warehouse completes.
- C. There are no users loaned into Snowflake.
- D. The Warehouse is inactive for a specified period of time.

Answer: D

Explanation:

Reference: <https://docs.snowflake.com/en/user-guide/warehouses-overview.html>

NEW QUESTION 83

- (Exam Topic 1)

Snowflake provides two mechanisms to reduce data storage costs for short-lived tables. These mechanisms are:
Choose 2 answers

- A. Temporary Tables
- B. Transient Tables
- C. Provisional Tables
- D. Permanent Tables

Answer: AB

Explanation:

Reference: <https://docs.snowflake.com/en/user-guide/tables-storage-considerations.html>

NEW QUESTION 87

- (Exam Topic 1)

Which of the following statements is true of data loading? Select one.

- A. Resizing the virtual warehouse from x-Small to Small will process a single file twice as fast
- B. The "deal file size for loading is 16MB to match micro-partition size
- C. Marry files in the 10-IOOMB range tend to land In the 'sweet spot" for load parallelism Once loaded, there is no option to force a reload of an already loaded file

Answer: C

NEW QUESTION 89

- (Exam Topic 1)

True or False: When you create a custom role, it is a practice to immediately grant that role to ACCOUNTADMIN.

- A. True
- B. False

Answer: B

NEW QUESTION 92

- (Exam Topic 1)

True or False: Snowpipe via RFST API can only reference External Stages as source.

- A. True
- B. False

Answer: B

Explanation:

Reference: <https://community.snowflake.com/s/article/Making-Transient-table-by-Default>

NEW QUESTION 94

- (Exam Topic 1)

True or False: You can define multiple columns within a clustering key on a table.

- A. True

B. False

Answer: A

Explanation:

Reference: <https://docs.snowflake.com/en/user-guide/tables-clustering-keys.html>

NEW QUESTION 96

- (Exam Topic 1)

Each incremental increase in Virtual Warehouse size (e.g. Medium to Large) generally results in what? Select one.

- A. More micro-partitions
- B. Better query scheduling
- C. Double the numbers of servers In the compute duster
- D. Higher storage costs

Answer: C

NEW QUESTION 98

- (Exam Topic 1)

Which of the following connectors are available in the Downloads section of the Snowflake web Interface (UI)?

Choose 2 answers

- A. SnowSQL
- B. ODBC
- C. R
- D. HIVE

Answer: AB

Explanation:

Reference: <https://docs.snowflake.com/en/user-guide/connecting.html>

NEW QUESTION 101

- (Exam Topic 1)

True or False the longer the data retention period, the higher the resulting storage costs.

- A. True
- B. False

Answer: A

NEW QUESTION 102

- (Exam Topic 1)

The number of queries that a Virtual Warehouse can concurrently process is determined by: Choose 2 answers

- A. The complexity of each query
- B. The CONCURRENT_QUERY_UMIT parameter set on the Snowflake account
- C. The size of the data required for each query
- D. The tool that s executing the query

Answer: AC

Explanation:

Reference: <https://docs.snowflake.com/en/user-guide/warehouses-overview.html>

NEW QUESTION 106

- (Exam Topic 1)

What privileges are required to execute a task?

- A. To execute a task, you need the EXECUTE TASK.
- B. A task is an account-level object and can only be executed by the Account Admin role.
- C. Tasks run automatically and do run under any rote.
- D. Tasks are stored in a special database called the utility database and require EXECUTE TASK privilege in the utility database.

Answer: A

NEW QUESTION 110

- (Exam Topic 1)

True or False: When Snowflake is configured to use Single Sign-on (sso), Snowflake receive the usernames and credentials from the sso service and loads them into the customer's Snowflake account.

- A. True
- B. false:

Answer: B

Explanation:

Reference: <https://docs.snowflake.com/en/user-guide/admin-security-fed-auth-configure-snowflake.html>

NEW QUESTION 114

- (Exam Topic 1)

True or False: Snowflake charges additional fees to Data providers for each share they create.

- A. True
- B. False

Answer: B

Explanation:

"The costs for sharing data with Snowflake are minimal and straightforward. Data providers simply pay Snowflake for the data they store, and data consumers pay for the compute resources their queries consume."

NEW QUESTION 116

- (Exam Topic 1)

True or False: It is possible to unload structured data to semi-structured formats such as JSON and parquet.

- A. True
- B. False

Answer: A

Explanation:

Reference: <https://docs.snowflake.com/en/user-guide/data-unload-prepare.html>

NEW QUESTION 120

- (Exam Topic 1)

Which of the following statements about data sharing are true? choose 2 answers

- A. New objects created by a Data Provider are automatically shared with existing Data Consumers & Reader Accounts
- B. All database objects can be included In a shared database
- C. Reader Accounts are created and funded by Data Prowlers
- D. Shared databases are read-only

Answer: CD

NEW QUESTION 125

- (Exam Topic 2)

Which of the following are benefits of micro-partitioning? (Select TWO)

- A. Micro-partitions cannot overlap in their range of values
- B. Micro-partitions are immutable objects that support the use of Time Travel.
- C. Micro-partitions can reduce the amount of I/O from object storage to virtual warehouses
- D. Rows are automatically stored in sorted order within micro-partitions
- E. Micro-partitions can be defined on a schema-by-schema basis

Answer: AD

Explanation:

<https://docs.snowflake.com/en/user-guide/tables-clustering-micropartitions.html>

NEW QUESTION 126

- (Exam Topic 2)

True or False: Loading data into Snowflake requires that source data files be no larger than 16MB.

- A. True
- B. False

Answer: B

Explanation:

By default, COPY INTO location statements separate table data into a set of output files to take advantage of parallel operations. The maximum size for each file is set using the MAX_FILE_SIZE copy option. The default value is 16777216 (16 MB) but can be increased to accommodate larger files. The maximum file size supported is 5 GB for Amazon S3, Google Cloud Storage, or Microsoft Azure stages. To unload data to a single output file (at the potential cost of decreased performance), specify the SINGLE = true copy option in your statement. You can optionally specify a name for the file in the path.

NEW QUESTION 130

- (Exam Topic 2)

Which of the following describes external functions in Snowflake?

- A. They are a type of User-defined Function (UDF).
- B. They contain their own SQL code.
- C. They call code that is stored inside of Snowflake.

D. They can return multiple rows for each row received

Answer: A

Explanation:

External functions are user-defined functions that are stored and executed outside of Snowflake.

External functions make it easier to access external API services such as geocoders, machine learning models, and other custom code running outside of Snowflake. This feature eliminates the need to export and reimport data when using third-party services, significantly simplifying your data pipelines.

<https://docs.snowflake.com/en/sql-reference/external-functions.html#:~:text=External%20functions%20are%20>

NEW QUESTION 132

- (Exam Topic 2)

Which semi-structured file formats are supported when unloading data from a table? (Select TWO).

- A. ORC
- B. XML
- C. Avro
- D. Parquet
- E. JSON

Answer: DE

Explanation:

Semi-structured JSON, Parquet

<https://docs.snowflake.com/en/user-guide/data-unload-prepare.html#:~:text=Supported%20File%20Formats,-Th>

NEW QUESTION 134

- (Exam Topic 2)

A user has unloaded data from Snowflake to a stage

Which SQL command should be used to validate which data was loaded into the stage?

- A. list @file__stage
- B. show @file__stage
- C. view @file__stage
- D. verify @file__stage

Answer: A

NEW QUESTION 138

- (Exam Topic 2)

Which Snowflake object enables loading data from files as soon as they are available in a cloud storage location?

- A. Pipe
- B. External stage
- C. Task
- D. Stream

Answer: A

Explanation:

Snowpipe enables loading data from files as soon as they're available in a stage. This means you can load data from files in micro-batches, making it available to users within minutes, rather than manually executing COPY statements on a schedule to load larger batches.

<https://docs.snowflake.com/en/user-guide/data-load-snowpipe-intro.html>

NEW QUESTION 140

- (Exam Topic 2)

What happens when a virtual warehouse is resized?

- A. When increasing the size of an active warehouse the compute resource for all running and queued queries on the warehouse are affected
- B. When reducing the size of a warehouse the compute resources are removed only when they are no longer being used to execute any current statements.
- C. The warehouse will be suspended while the new compute resource is provisioned and will resume automatically once provisioning is complete.
- D. Users who are trying to use the warehouse will receive an error message until the resizing is complete

Answer: B

NEW QUESTION 142

- (Exam Topic 2)

Which of the following objects can be shared through secure data sharing?

- A. Masking policy
- B. Stored procedure
- C. Task
- D. External table

Answer: D

Explanation:

Secure Data Sharing enables sharing selected objects in a database in your account with other Snowflake accounts. The following Snowflake database objects can be shared:

- > Tables
- > External tables
- > Secure views
- > Secure materialized views
- > Secure UDFs

Snowflake enables the sharing of databases through shares, which are created by data providers and “imported” by data consumers.

<https://docs.snowflake.com/en/user-guide/data-sharing-intro.html#:~:text=Secure%20Data%20Sharing%20enab>

NEW QUESTION 144

- (Exam Topic 2)

When reviewing a query profile, what is a symptom that a query is too large to fit into the memory?

- A. A single join node uses more than 50% of the query time
- B. Partitions scanned is equal to partitions total
- C. An AggregateOperacor node is present
- D. The query is spilling to remote storage

Answer: D

NEW QUESTION 148

- (Exam Topic 2)

What data is stored in the Snowflake storage layer? (Select TWO).

- A. Snowflake parameters
- B. Micro-partitions
- C. Query history
- D. Persisted query results
- E. Standard and secure view results

Answer: BD

NEW QUESTION 152

- (Exam Topic 2)

True or False: Fail-safe can be disabled within a Snowflake account.

- A. True
- B. False

Answer: B

Explanation:

Reference: <https://docs.snowflake.com/en/user-guide/data-failsafe.html>

Separate and distinct from Time Travel, Fail-safe ensures historical data is protected in the event of a system failure or other catastrophic event, e.g. a hardware failure or security breach. Fail safe feature cannot be enabled or disabled from the user end .

NEW QUESTION 153

- (Exam Topic 2)

What is the default character set used when loading CSV files into Snowflake?

- A. UTF-8
- B. UTF-16
- C. ISO S859-1
- D. ANSI_X3.A

Answer: A

Explanation:

<https://docs.snowflake.com/en/user-guide/intro-summary-loading.html#:~:text=For%20delimited%20files%20>(For delimited files (CSV, TSV, etc.), the default character set is UTF-8. To use any other characters sets, you must explicitly specify the encoding to use for loading. For the list of supported character sets, see Supported Character Sets for Delimited Files (in this topic).

NEW QUESTION 157

- (Exam Topic 2)

Which is the MINIMUM required Snowflake edition that a user must have if they want to use AWS/Azure Privatelink or Google Cloud Private Service Connect?

- A. Standard
- B. Premium
- C. Enterprise
- D. Business Critical

Answer: D

Explanation:

<https://docs.snowflake.com/en/user-guide/privatelink-azure.html>

NEW QUESTION 160

- (Exam Topic 2)

How would you determine the size of the virtual warehouse used for a task?

- A. Root task may be executed concurrently (i.
- B. multiple instances), it is recommended to leave some margins in the execution window to avoid missing instances of execution
- C. Querying (select) the size of the stream content would help determine the warehouse siz
- D. For example, if querying large stream content, use a larger warehouse size
- E. If using the stored procedure to execute multiple SQL statements, it's best to test run the stored procedure separately to size the compute resource first
- F. Since task infrastructure is based on running the task body on schedule, it's recommended to configure the virtual warehouse for automatic concurrency handling using Multi-cluster warehouse (MCW) to match the task schedule

Answer: C

NEW QUESTION 165

- (Exam Topic 2)

A user is loading JSON documents composed of a huge array containing multiple records into Snowflake. The user enables the strip outer_array file format option. What does the STRIP_OUTER_ARRAY file format do?

- A. It removes the last element of the outer array.
- B. It removes the outer array structure and loads the records into separate table rows,
- C. It removes the trailing spaces in the last element of the outer array and loads the records into separate table columns
- D. It removes the NULL elements from the JSON object eliminating invalid data and enables the ability to load the records

Answer: B

Explanation:

Data Size Limitations

The VARIANT data type imposes a 16 MB size limit on individual rows.

For some semi-structured data formats (e.g. JSON), data sets are frequently a simple concatenation of multiple documents. The JSON output from some software is composed of a single huge array containing multiple records. There is no need to separate the documents with line breaks or commas, though both are supported.

If the data exceeds 16 MB, enable the STRIP_OUTER_ARRAY file format option for the COPY INTO

<table> command to remove the outer array structure and load the records into separate table rows:

copy into <table> from @~/<file>.json

file_format = (type = 'JSON' strip_outer_array = true); <https://docs.snowflake.com/en/user-guide/semistructured-considerations.html>

NEW QUESTION 168

- (Exam Topic 2)

A user needs to create a materialized view in the schema MYDB.MYSCHEMA. Which statements will provide this access?

- A. GRANT ROLE MYROLE TO USER USER1;CREATE MATERIALIZED VIEW ON SCHEMA MYDB.MYSCHEMA TO ROLE MYROLE;
- B. GRANT ROLE MYROLE TO USER USER1;CREATE MATERIALIZED VIEW ON SCHEMA MYDB.MYSCHEMA TO USER USER1;
- C. GRANT ROLE MYROLE TO USER USER1;CREATE MATERIALIZED VIEW ON SCHEMA MYDB.MYSCHEMA TO USER1;
- D. GRANT ROLE MYROLE TO USER USER1;CREATE MATERIALIZED VIEW ON SCHEMA MYDB.MYSCHEMA TO MYROLE;

Answer: B

NEW QUESTION 171

- (Exam Topic 2)

User-level network policies can be created by which of the following roles? (Select TWO).

- A. ROLEADMIN
- B. ACCOUNTADMIN
- C. SYSADMIN
- D. SECURITYADMIN
- E. USERADMIN

Answer: DE

Explanation:

By default, Snowflake allows users to connect to the service from any computer or device IP address. A security administrator (or higher) can create a network policy to allow or deny access to a single IP address or a list of addresses. Network policies currently support only Internet Protocol version 4 (i.e. IPv4) addresses. An administrator with sufficient permissions can create any number of network policies. [https://docs.snowflake.com/en/user-guide/network-policies.html#:~:text=A%20security%20administrator%20\(o](https://docs.snowflake.com/en/user-guide/network-policies.html#:~:text=A%20security%20administrator%20(o)

NEW QUESTION 176

- (Exam Topic 2)

Which Snowflake partner specializes in data catalog solutions?

- A. Alation
- B. DataRobot
- C. dbt
- D. Tableau

Answer: A

Explanation:

Alation provides Data Cataloging functionality. They state they are the 'One Place to Find, Understand, & Govern Data Across an Enterprise.

<https://docs.snowflake.com/en/user-guide/ecosystem-all.html>

NEW QUESTION 180

- (Exam Topic 2)

When is the result set cache no longer available? (Select TWO)

- A. When another warehouse is used to execute the query
- B. When another user executes the query
- C. When the underlying data has changed
- D. When the warehouse used to execute the query is suspended
- E. When it has been 24 hours since the last query

Answer: CE

NEW QUESTION 183

- (Exam Topic 2)

What is a best practice after creating a custom role?

- A. Create the custom role using the SYSADMIN role.
- B. Assign the custom role to the SYSADMIN role
- C. Assign the custom role to the PUBLIC role
- D. Add__CUSTOM to all custom role names

Answer: B

Explanation:

When creating roles that will serve as the owners of securable objects in the system, Snowflake recommends creating a hierarchy of custom roles, with the top-most custom role assigned to the system role SYSADMIN. This role structure allows system administrators to manage all objects in the account, such as warehouses and database objects, while restricting management of users and roles to the USERADMIN role.

NEW QUESTION 184

- (Exam Topic 2)

Which feature is only available in the Enterprise or higher editions of Snowflake?

- A. Column-level security
- B. SOC 2 type II certification
- C. Multi-factor Authentication (MFA)
- D. Object-level access control

Answer: A

Explanation:

<https://docs.snowflake.com/en/user-guide/intro-editions.html>

NEW QUESTION 187

- (Exam Topic 2)

Which data types does Snowflake support when querying semi-structured data? (Select TWO)

- A. VARIANT
- B. ARRAY
- C. VARCHAR
- D. XML
- E. BLOB

Answer: AB

Explanation:

<https://docs.snowflake.com/en/user-guide/semistructured-intro.html#label-loading-semi-structured-data>

A VARIANT stores semi-structured data in Snowflake. It can store a value of any other type, including OBJECT and ARRAY.

The maximum length of a VARIANT is 16 MB.

A Snowflake ARRAY is similar to an array in many other programming languages. An ARRAY contains 0 or more pieces of data. Each element is accessed by specifying its position in the array.

NEW QUESTION 192

- (Exam Topic 2)

What transformations are supported in a CREATE PIPE ... AS COPY ... FROM (....) statement? (Select TWO.)

- A. Data can be filtered by an optional where clause
- B. Incoming data can be joined with other tables
- C. Columns can be reordered
- D. Columns can be omitted
- E. Row level access can be defined

Answer: CD

NEW QUESTION 194

- (Exam Topic 2)

What is the recommended file sizing for data loading using Snowpipe?

- A. A compressed file size greater than 100 MB, and up to 250 MB
- B. A compressed file size greater than 100 GB, and up to 250 GB
- C. A compressed file size greater than 10 MB, and up to 100 MB
- D. A compressed file size greater than 1 GB, and up to 2 GB

Answer: A

Explanation:

<https://www.phdata.io/blog/how-to-optimize-snowpipe-data-load/#:~:text=Snowpipe%20is%20typically%20use>

NEW QUESTION 197

- (Exam Topic 3)

Which of the following is an example of an operation that can be completed without requiring compute, assuming no queries have been executed previously?

- A. SELECT SUM (ORDER_AMT) FROM SALES;
- B. SELECT AVG(ORDER_QTY) FROM SALES;
- C. SELECT MIN(ORDER_AMT) FROM SALES;
- D. SELECT ORDER_AMT * ORDER_QTY FROM SALES;

Answer: B

NEW QUESTION 201

- (Exam Topic 3)

Where is Snowflake metadata stored?

- A. Within the data files
- B. In the virtual warehouse layer
- C. In the cloud services layer
- D. In the remote storage layer

Answer: B

Explanation:

Reference:

<https://docs.snowflake.com/en/user-guide/querying-metadata.html#:~:text=Snowflake%20automatically%20gen>

NEW QUESTION 202

- (Exam Topic 3)

Which of the following features, associated with Continuous Data Protection (CDP), require additional Snowflake-provided data storage? (Choose two.)

- A. Tri-Secret Secure
- B. Time Travel
- C. Fail-safe
- D. Data encryption
- E. External stages

Answer: BC

NEW QUESTION 204

- (Exam Topic 3)

Which of the following are handled by the cloud services layer of the Snowflake architecture? (Choose two.)

- A. Query execution
- B. Data loading
- C. Time Travel data
- D. Security
- E. Authentication and access control

Answer: BD

NEW QUESTION 205

- (Exam Topic 3)

A single user of a virtual warehouse has set the warehouse to auto-resume and auto-suspend after 10 minutes. The warehouse is currently suspended and the user performs the following actions:

- * 1. Runs a query that takes 3 minutes to complete
 - * 2. Leaves for 15 minutes
 - * 3. Returns and runs a query that takes 10 seconds to complete
 - * 4. Manually suspends the warehouse as soon as the last query was completed
- When the user returns, how much billable compute time will have been consumed?

- A. 4 minutes
- B. 10 minutes
- C. 14 minutes
- D. 24 minutes

Answer: C

NEW QUESTION 208

- (Exam Topic 3)

Which Snowflake function will interpret an input string as a JSON document, and produce a VARIANT value?

- A. parse_json()
- B. json_extract_path_text()
- C. object_construct()
- D. flatten

Answer: B

NEW QUESTION 212

- (Exam Topic 3)

What happens to the shared objects for users in a consumer account from a share, once a database has been created in that account?

- A. The shared objects are transferred.
- B. The shared objects are copied.
- C. The shared objects become accessible.
- D. The shared objects can be re-shared.

Answer: B

NEW QUESTION 217

- (Exam Topic 3)

Which of the following is the Snowflake Account_Usage.Metering_History view used for?

- A. Gathering the hourly credit usage for an account
- B. Compiling an account's average cloud services cost over the previous month
- C. Summarizing the throughput of Snowpipe costs for an account
- D. Calculating the funds left on an account's contract

Answer: A

NEW QUESTION 222

- (Exam Topic 3)

What effect does WAIT_FOR_COMPLETION = TRUE have when running an ALTER WAREHOUSE command and changing the warehouse size?

- A. The warehouse size does not change until all queries currently running in the warehouse have completed.
- B. The warehouse size does not change until all queries currently in the warehouse queue have completed.
- C. The warehouse size does not change until the warehouse is suspended and restarted.
- D. It does not return from the command until the warehouse has finished changing its size.

Answer: D

NEW QUESTION 223

- (Exam Topic 3)

Which feature allows a user the ability to control the organization of data in a micro-partition?

- A. Range Partitioning
- B. Search Optimization Service
- C. Automatic Clustering
- D. Horizontal Partitioning

Answer: D

NEW QUESTION 225

- (Exam Topic 3)

The bulk data load history that is available upon completion of the COPY statement is stored where and for how long?

- A. In the metadata of the target table for 14 days
- B. In the metadata of the pipe for 14 days
- C. In the metadata of the target table for 64 days
- D. In the metadata of the pipe for 64 days

Answer: A

NEW QUESTION 228

- (Exam Topic 3)

Where can a user find and review the failed logins of a specific user for the past 30 days?

- A. The USERS view in ACCOUNT_USAGE
- B. The LOGIN_HISTORY view in ACCOUNT_USAGE
- C. The ACCESS_HISTORY view in ACCOUNT_USAGE

D. The SESSIONS view in ACCOUNT_USAGE

Answer: B

NEW QUESTION 229

- (Exam Topic 3)

What COPY INTO SQL command should be used to unload data into multiple files?

- A. SINGLE=TRUE
- B. MULTIPLE=TRUE
- C. MULTIPLE=FALSE
- D. SINGLE=FALSE

Answer: C

NEW QUESTION 232

- (Exam Topic 3)

How often are the Account and Table master keys automatically rotated by Snowflake?

- A. 30 Days
- B. 60 Days
- C. 90 Days
- D. 365 Days.

Answer: D

NEW QUESTION 236

- (Exam Topic 3)

Which statement MOST accurately describes clustering in Snowflake?

- A. The database ACCOUNTADMIN must define the clustering methodology for each Snowflake table.
- B. Clustering is the way data is grouped together and stored within Snowflake micro-partitions.
- C. The clustering key must be included in the COPY command when loading data into Snowflake.
- D. Clustering can be disabled within a Snowflake account.

Answer: B

NEW QUESTION 240

- (Exam Topic 3)

What is the MINIMUM edition of Snowflake that is required to use a SCIM security integration?

- A. Business Critical Edition
- B. Standard Edition
- C. Virtual Private Snowflake (VPS)
- D. Enterprise Edition

Answer: D

NEW QUESTION 243

- (Exam Topic 3)

Credit charges for Snowflake virtual warehouses are calculated based on which of the following considerations? (Choose two.)

- A. The number of queries executed
- B. The number of active users assigned to the warehouse
- C. The size of the virtual warehouse
- D. The length of time the warehouse is running
- E. The duration of the queries that are executed

Answer: AD

NEW QUESTION 248

- (Exam Topic 3)

A data provider wants to share data with a consumer who does not have a Snowflake account. The provider creates a reader account for the consumer following these steps:

- * 1. Created a user called "CONSUMER"
- * 2. Created a database to hold the share and an extra-small warehouse to query the data
- * 3. Granted the role PUBLIC the following privileges: Usage on the warehouse, database, and schema, and SELECT on all the objects in the share

Based on this configuration what is true of the reader account?

- A. The reader account will automatically use the Standard edition of Snowflake.
- B. The reader account compute will be billed to the provider account.
- C. The reader account can clone data the provider has shared, but cannot re-share it.
- D. The reader account can create a copy of the shared data using CREATE TABLE AS...

Answer: C

NEW QUESTION 253

- (Exam Topic 3)

If 3 size Small virtual warehouse is made up of two servers, how many servers make up a Large warehouse?

- A. 4
- B. 8
- C. 16
- D. 32

Answer: B

Explanation:

Size specifies the amount of compute resources available per cluster in a warehouse. Snowflake supports the following warehouse sizes:

Warehouse Size	Credits / Hour	Credits / Second	Notes
X-Small	1	0.0003	Default size for warehouses created using <code>CREATE WAREHOUSE</code> .
Small	2	0.0006	
Medium	4	0.0011	
Large	8	0.0022	
X-Large	16	0.0044	Default for warehouses created in the web interface.
2X-Large	32	0.0089	
3X-Large	64	0.0178	
4X-Large	128	0.0356	
5X-Large	256	0.0711	Preview feature.
6X-Large	512	0.1422	Preview feature.

<https://docs.snowflake.com/en/user-guide/warehouses-overview.html>

NEW QUESTION 255

- (Exam Topic 3)

Query parsing and compilation occurs in which architecture layer of the Snowflake Cloud Data Platform?

- A. Cloud services layer
- B. Compute layer
- C. Storage layer
- D. Cloud agnostic layer

Answer: B

Explanation:

Reference: <https://www.projectpro.io/article/snowflake-architecture-what-does-snowflake-do/556>

NEW QUESTION 257

- (Exam Topic 3)

Which command should be used to download files from a Snowflake stage to a local folder on a client's machine?

- A. PUT
- B. GET
- C. COPY
- D. SELECT

Answer: B

Explanation:

Reference: <https://docs.snowflake.com/en/sql-reference/sql/get.html>

NEW QUESTION 259

- (Exam Topic 3)

Which of the following are characteristics of security in Snowflake?

- A. Account and user authentication is only available with the Snowflake Business Critical edition.
- B. Support for HIPAA and GDPR compliance is available for UI Snowflake editions.
- C. Periodic rekeying of encrypted data is available with the Snowflake Enterprise edition and higher
- D. Private communication to internal stages is allowed in the Snowflake Enterprise edition and higher.

Answer: C

NEW QUESTION 263

- (Exam Topic 3)

What is the purpose of multi-cluster virtual warehouses?

- A. To create separate data warehouses to increase query optimization
- B. To allow users the ability to choose the type of compute nodes that make up a virtual warehouse cluster
- C. To eliminate or reduce Queuing of concurrent queries
- D. To allow the warehouse to resize automatically

Answer: C

Explanation:

<https://docs.snowflake.com/en/user-guide/warehouses-multiclust.html#:~:text=Multi%2Dcluster%20warehous>

NEW QUESTION 264

- (Exam Topic 3)

Which stages are used with the Snowflake PUT command to upload files from a local file system? (Choose three.)

- A. Schema Stage
- B. User Stage
- C. Database Stage
- D. Table Stage
- E. External Named Stage
- F. Internal Named Stage

Answer: AEF

NEW QUESTION 266

- (Exam Topic 3)

Which Snowflake objects can be shared with other Snowflake accounts? (Choose three.)

- A. Schemas
- B. Roles
- C. Secure Views
- D. Stored Procedures
- E. Tables
- F. Secure User-Defined Functions (UDFs)

Answer: ABF

NEW QUESTION 267

- (Exam Topic 3)

When publishing a Snowflake Data Marketplace listing into a remote region what should be taken into consideration? (Choose two.)

- A. There is no need to have a Snowflake account in the target region, a share will be created for each user.
- B. The listing is replicated into all selected regions automatically, the data is not.
- C. The user must have the ORGADMIN role available in at least one account to link accounts for replication.
- D. Shares attached to listings in remote regions can be viewed from any account in an organization.
- E. For a standard listing the user can wait until the first customer requests the data before replicating it to the target region.

Answer: AC

NEW QUESTION 271

- (Exam Topic 3)

Which statement describes pruning?

- A. The filtering or disregarding of micro-partitions that are not needed to return a query.
- B. The return of micro-partitions values that overlap with each other to reduce a query's runtime.
- C. A service that is handled by the Snowflake Cloud Services layer to optimize caching.
- D. The ability to allow the result of a query to be accessed as if it were a table.

Answer: A

NEW QUESTION 273

- (Exam Topic 3)

A company needs to allow some users to see Personally Identifiable Information (PII) while limiting other users from seeing the full value of the PII. Which Snowflake feature will support this?

- A. Row access policies
- B. Data masking policies
- C. Data encryption
- D. Role based access control

Answer: B

NEW QUESTION 276

- (Exam Topic 3)

Which statement describes how Snowflake supports reader accounts?

- A. A reader account can consume data from the provider account that created it and combine it with its own data.
- B. A consumer needs to become a licensed Snowflake customer as data sharing is only supported between Snowflake accounts.
- C. The users in a reader account can query data that has been shared with the reader account and can perform DML tasks.
- D. The SHOW MANAGED ACCOUNTS command will view all the reader accounts that have been created for an account.

Answer: C

NEW QUESTION 279

- (Exam Topic 3)

Which SQL command can be used to see the CREATE definition of a masking policy?

- A. SHOW MASKING POLICIES
- B. DESCRIBE MASKING POLICY
- C. GET_DDL
- D. LIST MASKING POLICIES

Answer: C

NEW QUESTION 283

- (Exam Topic 3)

User INQUISITIVE_PERSON has been granted the role DATA_SCIENCE. The role DATA_SCIENCE has privileges OWNERSHIP on the schema MARKETING of the database ANALYTICS_DW.

Which command will show all privileges granted to that schema?

- A. SHOW GRANTS ON ROLE DATA_SCIENCE
- B. SHOW GRANTS ON SCHEMA ANALYTICS_DW.MARKETING
- C. SHOW GRANTS TO USER INQUISITIVE_PERSON
- D. SHOW GRANTS OF ROLE DATA_SCIENCE

Answer: B

NEW QUESTION 285

- (Exam Topic 3)

Which of the following can be used when unloading data from Snowflake? (Choose two.)

- A. When unloading semi-structured data, it is recommended that the STRIP_OUTER_ARRAY option be used.
- B. Use the ENCODING file format option to change the encoding from the default UTF-8.
- C. The OBJECT_CONSTRUCT function can be used to convert relational data to semi-structured data.
- D. By using the SINGLE = TRUE parameter, a single file up to 5 GB in size can be exported to the storage layer.
- E. Use the PARSE_JSON function to ensure structured data will be unloaded into the VARIANT data type.

Answer: AD

NEW QUESTION 287

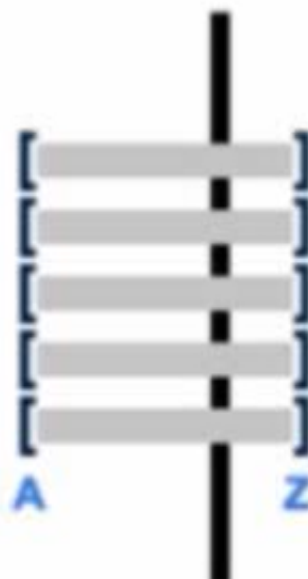
- (Exam Topic 3)

Assume there is a table consisting of five micro-partitions with values ranging from A to Z. Which diagram indicates a well-clustered table?

- A. C:\Users\Admin\Desktop\Data\Odt data\Untitled.jpg



- B. C:\Users\Admin\Desktop\Data\Odt data\Untitled.jpg



- C. C:\Users\Admin\Desktop\Data\Odt data\Untitled.jpg



D. C:\Users\Admin\Desktop\Data\Odt data\Untitled.jpg



Answer: A

NEW QUESTION 288

- (Exam Topic 3)

Which of the following accurately describes shares?

- A. Tables, secure views, and secure UDFs can be shared
- B. Shares can be shared
- C. Data consumers can clone a new table from a share
- D. Access to a share cannot be revoked once granted

Answer: A

NEW QUESTION 291

- (Exam Topic 3)

What is the minimum Snowflake edition needed for database failover and fail-back between Snowflake accounts for business continuity and disaster recovery?

- A. Standard
- B. Enterprise
- C. Business Critical
- D. Virtual Private Snowflake

Answer: B

NEW QUESTION 293

- (Exam Topic 3)

What is the default file size when unloading data from Snowflake using the COPY command?

- A. 5 MB
- B. 8 GB
- C. 16 MB
- D. 32 MB

Answer: C

NEW QUESTION 297

- (Exam Topic 3)

A user has a standard multi-cluster warehouse auto-scaling policy in place. Which condition will trigger a cluster to shut-down?

- A. When after 2-3 consecutive checks the system determines that the load on the most-loaded cluster could be redistributed.
- B. When after 5-6 consecutive checks the system determines that the load on the most-loaded cluster could be redistributed.
- C. When after 5-6 consecutive checks the system determines that the load on the least-loaded cluster could be redistributed.
- D. When after 2-3 consecutive checks the system determines that the load on the least-loaded cluster could be redistributed.

Answer: D

NEW QUESTION 300

- (Exam Topic 3)

Which statements reflect key functionalities of a Snowflake Data Exchange? (Choose two.)

- A. If an account is enrolled with a Data Exchange, it will lose its access to the Snowflake Marketplace.
- B. A Data Exchange allows groups of accounts to share data privately among the accounts.
- C. A Data Exchange allows accounts to share data with third, non-Snowflake parties.

- D. Data Exchange functionality is available by default in accounts using the Enterprise edition or higher.
- E. The sharing of data in a Data Exchange is bidirectiona
- F. An account can be a provider for some datasets and a consumer for others.

Answer: B

NEW QUESTION 301

- (Exam Topic 3)

A running virtual warehouse is suspended.

What is the MINIMUM amount of time that the warehouse will incur charges for when it is restarted?

- A. 1 second
- B. 60 seconds
- C. 5 minutes
- D. 60 minutes

Answer: B

NEW QUESTION 302

- (Exam Topic 3)

How are serverless features billed?

- A. Per second multiplied by an automatic sizing for the job
- B. Per minute multiplied by an automatic sizing for the job, with a minimum of one minute
- C. Per second multiplied by the size, as determined by the SERVERLESS_FEATURES_SIZE account parameter
- D. Serverless features are not billed, unless the total cost for the month exceeds 10% of the warehouse credits, on the account

Answer: D

NEW QUESTION 307

- (Exam Topic 3)

What do the terms scale up and scale out refer to in Snowflake? (Choose two.)

- A. Scaling out adds clusters of the same size to a virtual warehouse to handle more concurrent queries.
- B. Scaling out adds clusters of varying sizes to a virtual warehouse.
- C. Scaling out adds additional database servers to an existing running cluster to handle more concurrent queries.
- D. Snowflake recommends using both scaling up and scaling out to handle more concurrent queries.
- E. Scaling up resizes a virtual warehouse so it can handle more complex workloads.
- F. Scaling up adds additional database servers to an existing running cluster to handle larger workloads.

Answer: AE

NEW QUESTION 312

- (Exam Topic 3)

Which privilege must be granted to a share to allow secure views the ability to reference data in multiple databases?

- A. CREATE_SHARE on the account
- B. SHARE on databases and schemas
- C. SELECT on tables used by the secure view
- D. REFERENCE_USAGE on databases

Answer: C

NEW QUESTION 313

- (Exam Topic 3)

What is the minimum Snowflake edition required to use Dynamic Data Masking?

- A. Standard
- B. Enterprise
- C. Business Critical
- D. Virtual Private Snowflake (VPC)

Answer: D

NEW QUESTION 318

- (Exam Topic 3)

Which privilege is required for a role to be able to resume a suspended warehouse if auto-resume is not enabled?

- A. USAGE
- B. OPERATE
- C. MONITOR
- D. MODIFY

Answer: B

Explanation:

Reference:

<https://community.snowflake.com/s/question/0D50Z00008yHYdqSAG/auto-resume-operate-warehouse-privileg>

NEW QUESTION 323

- (Exam Topic 3)

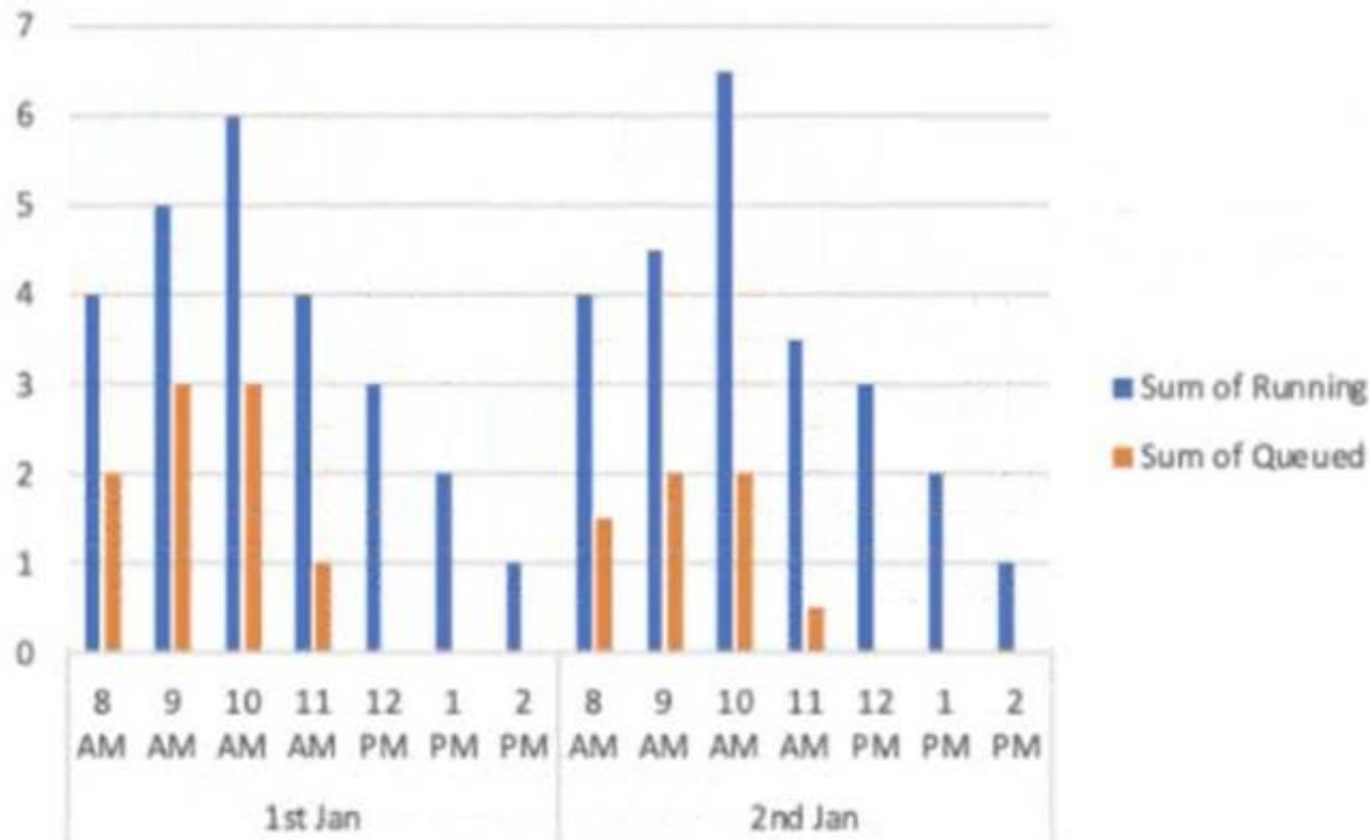
A virtual warehouse is created using the following command:

Create warehouse my_WH with warehouse_size = MEDIUM min_cluster_count = 1

max_cluster_count = 1

auto_suspend = 60 auto_resume = true;

The image below is a graphical representation of the warehouse utilization across two days.



What action should be taken to address this situation?

- A. Increase the warehouse size from Medium to 2XL.
- B. Increase the value for the parameter MAX_CONCURRENCY_LEVEL.
- C. Configure the warehouse to a multi-cluster warehouse.
- D. Lower the value of the parameter STATEMENT_QUEUED_TIMEOUT_IN_SECONDS.

Answer: B

NEW QUESTION 327

- (Exam Topic 3)

A user created a transient table and made several changes to it over the course of several days. Three days after the table was created, the user would like to go back to the first version of the table.

How can this be accomplished?

- A. Use Time Travel, as long as DATA_RETENTION_TIME_IN_DAYS was set to at least 3 days.
- B. The transient table version cannot be retrieved after 24 hours.
- C. Contact Snowflake Support to have the data retrieved from Fail-safe storage.
- D. Use the FAIL_SAFE parameter for Time Travel to retrieve the data from Fail-safe storage.

Answer: B

NEW QUESTION 332

- (Exam Topic 3)

How would a user execute a series of SQL statements using a task?

- A. Include the SQL statements in the body of the task CREATE TASK mytask .. AS INSERT INTO target1 SELECT .. FROM stream_s1 WHERE .. INSERT INTO target2 SELECT .. FROM stream_s1 WHERE ..
- B. A stored procedure can have only one DML statement per stored procedure invocation and therefore the user should sequence stored procedure calls in the task definition CREATE TASK mytask AS call stored_proc1(); call stored_proc2();
- C. Use a stored procedure executing multiple SQL statements and invoke the stored procedure from the task
- D. CREATE TASK mytask AS call stored_proc_multiple_statements_inside();
- E. Create a task for each SQL statement (e. resulting in task1, task2, etc.) and string the series of SQL statements by having a control task calling task1, task2, et
- G. sequentially.

Answer: D

NEW QUESTION 337

- (Exam Topic 3)

Why does Snowflake recommend file sizes of 100-250 MB compressed when loading data?

- A. Optimizes the virtual warehouse size and multi-cluster setting to economy mode

- B. Allows a user to import the files in a sequential order
- C. Increases the latency staging and accuracy when loading the data
- D. Allows optimization of parallel operations

Answer: D

NEW QUESTION 342

- (Exam Topic 3)

True or False: Snowpipe via REST API can only reference External Stages as source.

- A. True
- B. False

Answer: B

Explanation:

Reference: <https://community.snowflake.com/s/article/Making-Transient-table-by-Default>

NEW QUESTION 344

- (Exam Topic 3)

In the Snowflake access control model, which entity owns an object by default?

- A. The user who created the object
- B. The SYSADMIN role
- C. Ownership depends on the type of object
- D. The role used to create the object

Answer: D

NEW QUESTION 345

- (Exam Topic 3)

Which of the following objects can be directly restored using the UNDROP command? (Choose two.)

- A. Schema
- B. View
- C. Internal stage
- D. Table
- E. User
- F. Role

Answer: AD

NEW QUESTION 348

- (Exam Topic 3)

What privilege should a user be granted to change permissions for new objects in a managed access schema?

- A. Grant the OWNERSHIP privilege on the schema.
- B. Grant the OWNERSHIP privilege on the database.
- C. Grant the MANAGE GRANTS global privilege.
- D. Grant ALL privileges on the schema.

Answer: C

NEW QUESTION 351

- (Exam Topic 3)

Which database objects can be shared with the Snowflake secure data sharing feature? (Choose two.)

- A. Files
- B. External tables
- C. Secure User-Defined Functions (UDFs)
- D. Sequences
- E. Streams

Answer: BC

NEW QUESTION 352

- (Exam Topic 3)

Which command sets the Virtual Warehouse for a session?

- A. COPY WAREHOUSE FROM <<config file>>;
- B. SET WAREHOUSE = <<warehouse name>>;
- C. USE WAREHOUSE <<warehouse name>>;
- D. USE VIRTUAL_WAREHOUSE <<warehouse name>>;

Answer: C

Explanation:

Reference: <https://docs.snowflake.com/en/user-guide/warehouses-tasks.html>

NEW QUESTION 356

- (Exam Topic 3)

Which parameter can be used to instruct a COPY command to verify data files instead of loading them into a specified table?

- A. STRIP_NULL_VALUES
- B. SKIP_BYTE_ORDER_MARK
- C. REPLACE_INVALID_CHARACTERS
- D. VALIDATION_MODE

Answer: D

Explanation:

<https://docs.snowflake.com/en/sql-reference/sql/copy-into-table.html>

VALIDATION_MODE = RETURN_ROWS | RETURN_ERRORS | RETURN_ALL_ERRORS

String (constant) that instructs the COPY command to validate the data files instead of loading them into the

specified table; i.e. the COPY command tests the files for errors but does not load them. The command validates the data to be loaded and returns results based on the validation option specified:

NEW QUESTION 360

- (Exam Topic 3)

What occurs when a pipe is recreated using the CREATE OR REPLACE PIPE command?

- A. The Pipe load history is reset to empty.
- B. The REFRESH command is executed.
- C. The stage will be purged.
- D. The destination table is truncated.

Answer: B

NEW QUESTION 361

- (Exam Topic 3)

A table needs to be loaded. The input data is in JSON format and is a concatenation of multiple JSON documents. The file size is 3 GB. A warehouse size small is being used. The following COPY INTO command was executed:

```
COPY INTO SAMPLE FROM @~/SAMPLE.JSON (TYPE=JSON)
```

The load failed with this error:

Max LOB size (16777216) exceeded, actual size of parsed column is 17894470. How can this issue be resolved?

- A. Compress the file and load the compressed file.
- B. Split the file into multiple files in the recommended size range (100 MB - 250 MB).
- C. Use a larger-sized warehouse.
- D. Set STRIP_OUTER_ARRAY=TRUE in the COPY INTO command.

Answer: A

NEW QUESTION 364

- (Exam Topic 3)

How does Snowflake Fail-safe protect data in a permanent table?

- A. Fail-safe makes data available up to 1 day, recoverable by user operations.
- B. Fail-safe makes data available for 7 days, recoverable by user operations.
- C. Fail-safe makes data available for 7 days, recoverable only by Snowflake Support.
- D. Fail-safe makes data available up to 1 day, recoverable only by Snowflake Support.

Answer: C

NEW QUESTION 367

- (Exam Topic 3)

Which commands should be used to grant the privilege allowing a role to select data from all current tables and any tables that will be created later in a schema? (Choose two.)

- A. grant USAGE on all tables in schema DB1.SCHEMA to role MYROLE;
- B. grant USAGE on future tables in schema DB1.SCHEMA to role MYROLE;
- C. grant SELECT on all tables in schema DB1.SCHEMA to role MYROLE;
- D. grant SELECT on future tables in schema DB1.SCHEMA to role MYROLE;
- E. grant SELECT on all tables in database DB1 to role MYROLE;
- F. grant SELECT on future tables in database DB1 to role MYROLE;

Answer: CD

NEW QUESTION 370

- (Exam Topic 3)

When cloning a database containing stored procedures and regular views, that have fully qualified table references, which of the following will occur?

- A. The cloned views and the stored procedures will reference the cloned tables in the cloned database.
- B. An error will occur, as views with qualified references cannot be cloned.
- C. An error will occur, as stored objects cannot be cloned.
- D. The stored procedures and views will refer to tables in the source database.

Answer: D

NEW QUESTION 375

- (Exam Topic 3)

How does Snowflake allow a data provider with an Azure account in central Canada to share data with a data consumer on AWS in Australia?

- A. The data provider in Azure Central Canada can create a direct share to AWS Asia Pacific, if they are both in the same organization.
- B. The data consumer and data provider can form a Data Exchange within the same organization to create a share from Azure Central Canada to AWS Asia Pacific.
- C. The data provider uses the GET DATA workflow in the Snowflake Data Marketplace to create a share between Azure Central Canada and AWS Asia Pacific.
- D. The data provider must replicate the database to a secondary account in AWS Asia Pacific within the same organization then create a share to the data consumer's account.

Answer: C

NEW QUESTION 376

- (Exam Topic 3)

What features that are part of the Continuous Data Protection (CDP) feature set in Snowflake do not require additional configuration? (Choose two.)

- A. Row level access policies
- B. Data masking policies
- C. Data encryption
- D. Time Travel
- E. External tokenization

Answer: CD

NEW QUESTION 380

- (Exam Topic 3)

Which of the following statements describe features of Snowflake data caching? (Choose two.)

- A. When a virtual warehouse is suspended, the data cache is saved on the remote storage layer.
- B. When the data cache is full, the least-recently used data will be cleared to make room.
- C. A user can only access their own queries from the query result cache.
- D. A user must set USE_METADATA_CACHE to TRUE to use the metadata cache in queries.
- E. The RESULT_SCAN table function can access and filter the contents of the query result cache.

Answer: BD

NEW QUESTION 381

- (Exam Topic 3)

For non-materialized views, what column in Information Schema and Account Usage identifies whether a view is secure or not?

- A. CHECK_OPTION
- B. IS_SECURE
- C. IS_UPDATEABLE
- D. TABLE_NAME

Answer: B

NEW QUESTION 386

- (Exam Topic 3)

Which of the following features are available with the Snowflake Enterprise edition? (Choose two.)

- A. Database replication and failover
- B. Automated index management
- C. Customer managed keys (Tri-secret secure)
- D. Extended time travel
- E. Native support for geospatial data

Answer: AD

NEW QUESTION 391

- (Exam Topic 3)

Using variables in Snowflake is denoted by using which SQL character?

- A. @
- B. &
- C. \$
- D. #

Answer: C

NEW QUESTION 394
.....

Thank You for Trying Our Product

We offer two products:

1st - We have Practice Tests Software with Actual Exam Questions

2nd - Questions and Answers in PDF Format

SnowPro-Core Practice Exam Features:

- * SnowPro-Core Questions and Answers Updated Frequently
- * SnowPro-Core Practice Questions Verified by Expert Senior Certified Staff
- * SnowPro-Core Most Realistic Questions that Guarantee you a Pass on Your FirstTry
- * SnowPro-Core Practice Test Questions in Multiple Choice Formats and Updatesfor 1 Year

100% Actual & Verified — Instant Download, Please Click
[Order The SnowPro-Core Practice Test Here](#)