

Exam Questions PL-600

Microsoft Power Platform Solution Architect

<https://www.2passeasy.com/dumps/PL-600/>



NEW QUESTION 1

DRAG DROP - (Topic 1)

You need to recommend solutions to meet the organization's communication needs.

What should you recommend? To answer, drag the appropriate technologies to the correct groups of users. Each technology may be used once, more than once, or not at all. You may need to drag the split bar between panes or scroll to view content.

NOTE: Each correct selection is worth one point.

Technologies	Group of users	Technology
Microsoft Teams	First Up employees	
Power Apps portals	Workers	
Microsoft 365 Business Voice		

Answer:

Technologies	Group of users	Technology
Microsoft Teams	First Up employees	Microsoft Teams
Power Apps portals	Workers	Microsoft 365 Business Voice
Microsoft 365 Business Voice		

- A. Mastered
- B. Not Mastered

Answer: A

Explanation:

Box 1: Microsoft Teams

First up employees must be able to contact each other by using a secure system to ask and answer questions about medical cases.

Microsoft Teams key capabilities:

? Connected

? Secure

? Managed

? Collaborative and productive Box 2: Microsoft 365 Business Voice

Workers must be able to communicate in near real-time with worker support agents.

Microsoft 365 Business Voice makes it easy for small and medium organizations to turn Microsoft Teams into a powerful and flexible telephone system. It's a replacement for

traditional telephony providers and in-house phone systems that can be difficult and costly to manage.

NEW QUESTION 2

HOTSPOT - (Topic 1)

You need to recommend solutions for the organization's technical challenges.

What should you recommend? To answer, select the appropriate options in the answer area.

NOTE: Each correct selection is worth one point.

Requirement	Solution
Provide workers a self-service option for viewing personal and skills information.	<div><div></div><div>Power Automate</div><div>QnA Maker</div><div>Azure Cognitive Services</div></div>
Authenticate workers who use the self-service option for updating skills information.	<div><div></div><div>Azure Active Directory B2B</div><div>Azure Active Directory B2C</div><div>Dynamics 365 owner team</div></div>
Plan routes for audit teams.	<div><div></div><div>Azure traffic routing</div><div>Address input component</div><div>Dynamics 365 Field Service</div></div>

- A. Mastered
- B. Not Mastered

Answer: A

Explanation:

Box 1: Power Automate

Self-service purchase is available for Power Platform (Power BI, Power Apps, and Power Automate), Project, and Visio.

Box 2: Azure Active Directory B2B

Scenario: First Up Consulting recruits information technology (IT) workers for temporary or permanent positions at client companies.

Azure Active Directory (Azure AD) business-to-business (B2B) collaboration is a feature within External Identities that lets you invite guest users to collaborate with your organization. With B2B collaboration, you can securely share your company's applications and services with guest users from any other organization, while maintaining control over your own corporate data. Work safely and securely with external partners, large or small, even if they don't have Azure AD or an IT department. A simple invitation and redemption process lets partners use their own credentials to access your company's resources.

Note, Scenario:

? Workers must be able to sign into a portal by using their own email address.

Workers must be required to use a secure method of authentication to be able to view their data.

? User security roles must be customized to ensure that users are able to interact only with the specific data in which they need access. Box 3: Dynamics 365 Field Service

Dynamics 365 Field Service functionality include:

An interactive schedule board helps dispatchers assign work orders to the best resources based on location, availability, skill set, priority, and more. This is done via a manual drag- and-drop method, a semi-automated scheduling assistant, or fully automated with Resource Scheduling Optimization.

The schedule board displays each resource--whether an employee, contractor, or equipment--and their scheduled work orders. Resources and their assigned jobs are also displayed on a map along with routes and traffic patterns in real time.

NEW QUESTION 3

- (Topic 1)

You need to recommend technology for accessing historical job placement data. What should you recommend?

- A. Power Virtual Agents chatbots
- B. Virtual tables
- C. Power BI
- D. Power Automate flows

Answer: B

Explanation:

A virtual table is a custom table in Microsoft Dataverse that has columns containing data from an external

rows, but contain data that is sourced from an external database, such as an Azure SQL Database. Rows based on virtual tables are available in all clients including custom clients developed using the Dataverse web services.

Scenario:

? First Up uses an on-premises system to manage current and historical patient data including medications and medical visits.

? The company plans to reference historical data in the existing system. The records held in these systems will not be migrated to the new solution except for medication information.

? The solution must provide a worker appointment booking system that can access worker historical job placement data.
? First Up staff members must be able to view and update worker records. They must be able to see current and historical job placement data on the same form in the new solution.
Reference:
<https://docs.microsoft.com/en-us/powerapps/maker/data-platform/create-edit-virtual-entities>

NEW QUESTION 4
HOTSPOT - (Topic 1)

You need to design tables for the solution.
What should you recommend? To answer, select the appropriate options in the answer area.
NOTE: Each correct selection is worth one point.

Data type	Technical solution
Job placement record	<div><div></div><div>Custom table</div><div>Activity table</div><div>Virtual table</div></div>
Security clearance record	<div><div></div><div>Lookup (N:1)</div><div>Choice</div><div>Lookup (N:N)</div></div>

- A. Mastered
- B. Not Mastered

Answer: A

Explanation:

Box 1: Virtual Table

A virtual table is a custom table in Microsoft Dataverse that has columns containing data from an external data source. Virtual tables appear in your app to users as regular table rows, but contain data that is sourced from an external database, such as an Azure SQL Database. Rows based on virtual tables are available in all clients including custom clients developed using the Dataverse web services.

Scenario:

? First Up uses an on-premises system to manage current and historical patient data including medications and medical visits.

? The company plans to reference historical data in the existing system. The records held in these systems will not be migrated to the new solution except for medication information.

? The solution must provide a worker appointment booking system that can access worker historical job placement data.

? First Up staff members must be able to view and update worker records. They must be able to see current and historical job placement data on the same form in the new solution.

Box 2: Lookup (N:1)

Each worker can have many security clearances, so need a 1:N relationship.

Scenario: The solution must support tracking of security clearance information for a worker including the date, status, and certifying agency.

NEW QUESTION 5

- (Topic 1)

You need to recommend a solution for handling data entry requirements for the mobile audit teams.

What are two possible ways to achieve the goal? Each correct answer presents a complete solution.

NOTE: Each correct selection is worth one point.

- A. Mastered
- B. Not Mastered

Answer: A

Explanation:

Scenario:

Audit teams must have the ability to view worker information on their mobile devices. Audit teams must be able to record data during visits to locations where workers are placed.

When you create an app, or someone shares an app with you, you can run that app on the Power Apps mobile app or in a web browser.

Reference:

<https://docs.microsoft.com/en-us/powerapps/user/run-app-browser>

NEW QUESTION 6

HOTSPOT - (Topic 1)

You need to recommend methods to resolve the organization's issues.

What should you recommend? To answer, select the appropriate options in the answer area.

NOTE: Each correct selection is worth one point.

Issue	Resolution method
Users cannot see Power BI reports.	<div><div></div><div>Add users to Microsoft 365. Assign Power BI licenses to users. Configure an on-premises data gateway.</div></div>
Historical data does not appear in reports.	<div><div></div><div>Configure Azure Data Lake. Configure a custom connector. Configure an on-premises data gateway.</div></div>

Answer:

Issue	Resolution method
Users cannot see Power BI reports.	<div><div></div><div>Add users to Microsoft 365. Assign Power BI licenses to users. Configure an on-premises data gateway.</div></div>
Historical data does not appear in reports.	<div><div></div><div>Configure Azure Data Lake. Configure a custom connector. Configure an on-premises data gateway.</div></div>

- A. Mastered
- B. Not Mastered

Answer: A

Explanation:

Box 1: Add users to Microsoft 365.
Scenario: Users cannot view Power BI reports within the Power Platform apps.
Issue: The people you share with may see a locked tile in a dashboard, or a "Permission required" message when they try to view a report.
Solution: You need to grant them permission to the underlying dataset.
? Go to the All or the Datasets + dataflows tab in your content list.
? Select More options (...) next to a dataset, then select Manage permissions.
? Select Add user.
? Enter the full email addresses for individuals, distribution groups, or security groups.
? Select Grant access.

Box 2: Configure an on-premises data gateway.

Scenario: The company plans to reference historical data in the [on-premises] existing system. The records held in these systems will not be migrated to the new solution except for medication information.

The on-premises data gateway acts as a bridge to provide quick and secure data transfer between on-premises data (data that isn't in the cloud) and several Microsoft cloud services. These cloud services include Power BI, PowerApps, Power Automate, Azure Analysis Services, and Azure Logic Apps. By using a gateway, organizations can keep databases and other data sources on their on-premises networks, yet securely use that on- premises data in cloud services.

NEW QUESTION 7

HOTSPOT - (Topic 2)

You need to recommend tools for agents and management.

Which tools should you recommend? To answer, select the appropriate option in the answer area.

NOTE: Each correct selection is worth one point.

User type	Tool
Agent	<div><div></div><div><div>Power BI</div><div>Dashboard</div><div>Microsoft Power Automate</div><div>Microsoft Power Apps</div></div></div>
Management	<div><div></div><div><div>Power BI</div><div>Microsoft Power Apps</div><div>Microsoft AppSource</div><div>Microsoft Power Automate</div></div></div>

Answer:

User type	Tool
Agent	<div><div></div><div>Power BI</div><div>Dashboard</div><div>Microsoft Power Automate</div><div>Microsoft Power Apps</div></div>
Management	<div><div></div><div>Power BI</div><div>Microsoft Power Apps</div><div>Microsoft AppSource</div><div>Microsoft Power Automate</div></div>

- A. Mastered
- B. Not Mastered

Answer: A

Explanation:

Box 1: Dashboard

Agents need dashboards to show a current count of all reservations on the entity.

Box 2: Power BI

Management requires paginated reports for stakeholders.

NEW QUESTION 8

- (Topic 2)

You need to provide the IT team and managers with a mobile solution. How many apps should you recommend?

A.

one app for each job role

- B. one app for each user
- C. one app for all employees of the team
- D. one app for each team of employees

Answer: A

Explanation:

Scenario: IT staff needs a mobile solution to see IT cases at the top of the menu since this is their primary focus. Managers need to see all customer dashboards at the top of their menu on their mobile device.

NEW QUESTION 9

- (Topic 2)

You need to select an appropriate app for Relecloud. Which app should you recommend?

- A. Dynamics 365 Field Service
- B. Dynamics 365 Sales
- C. Dynamics 365 Project Operations
- D. Dynamics 365 Customer Service

Answer: D

Explanation:

Microsoft Dynamics 365 Customer Service is a module for customer service automation that streamlines case and knowledge management, enables personalized customer service with a 360-degree customer view, and provides visibility into customer service department performance with dashboards and reports.

Reference:

<https://docs.microsoft.com/en-us/dynamics365/customer-service/overview>

NEW QUESTION 10

- (Topic 3)

You need to recommend a solution for creating the initial inspection checklists. What should you recommend?

- A. Power Apps Maker portal

- B. Dataverse for Teams
- Power Apps Studio
- B: Data Migration utility

Answer: B

Explanation:

Scenario: Standardized checklists must be stored in the solution for use by inspectors. A copy must be created when a new inspection is initiated.

Dataverse for Teams – built on Microsoft Dataverse – provides relational data storage, rich data types, enterprise-grade governance, and one-click solution deployment to the Microsoft Teams app store.

Dataverse for teams table creation has all of the things that are great about Microsoft Lists, without the major downsides.

Reference:
<https://docs.microsoft.com/en-us/powerapps/teams/create-table>

NEW QUESTION 10

HOTSPOT - (Topic 3)

You need to recommend a solution to meet user interface requirements.

What should you recommend? To answer, select the appropriate options in the answer area.

NOTE: Each correct selection is worth one point.

Requirement	Solution
Visual representation of gauge readings with minimum and maximum tolerances.	<div><div></div><div>Create and embed a Power BI radial gauge. Create and embed a custom visualization component. Create and embed a standard Power Apps donut chart.</div></div>
Add visibility to the manufacturing inspection records for onsite technicians.	<div><div></div><div>Configure mobile offline synchronization. Add an inspection order to the work order form Modify the sitemap for Dynamics 365 Field Service.</div></div>

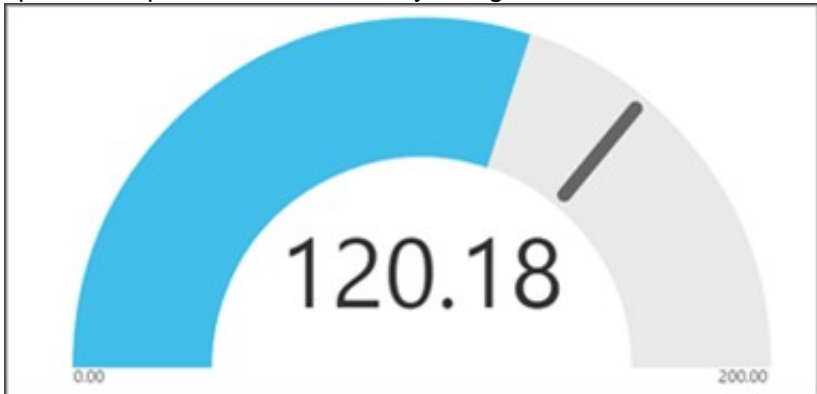
- A. Mastered
- B. Not Mastered

Answer: A

Explanation:

Box 1: Create and embed a Power Bi radial gauge

A radial gauge chart has a circular arc and shows a single value that measures progress toward a goal or a Key Performance Indicator (KPI). The line (or needle) represents the goal or target value. The shading represents the progress toward that goal. The value inside the arc represents the progress value. Power BI spreads all possible values evenly along the arc, from the minimum (left-most value) to the maximum (right-most value).



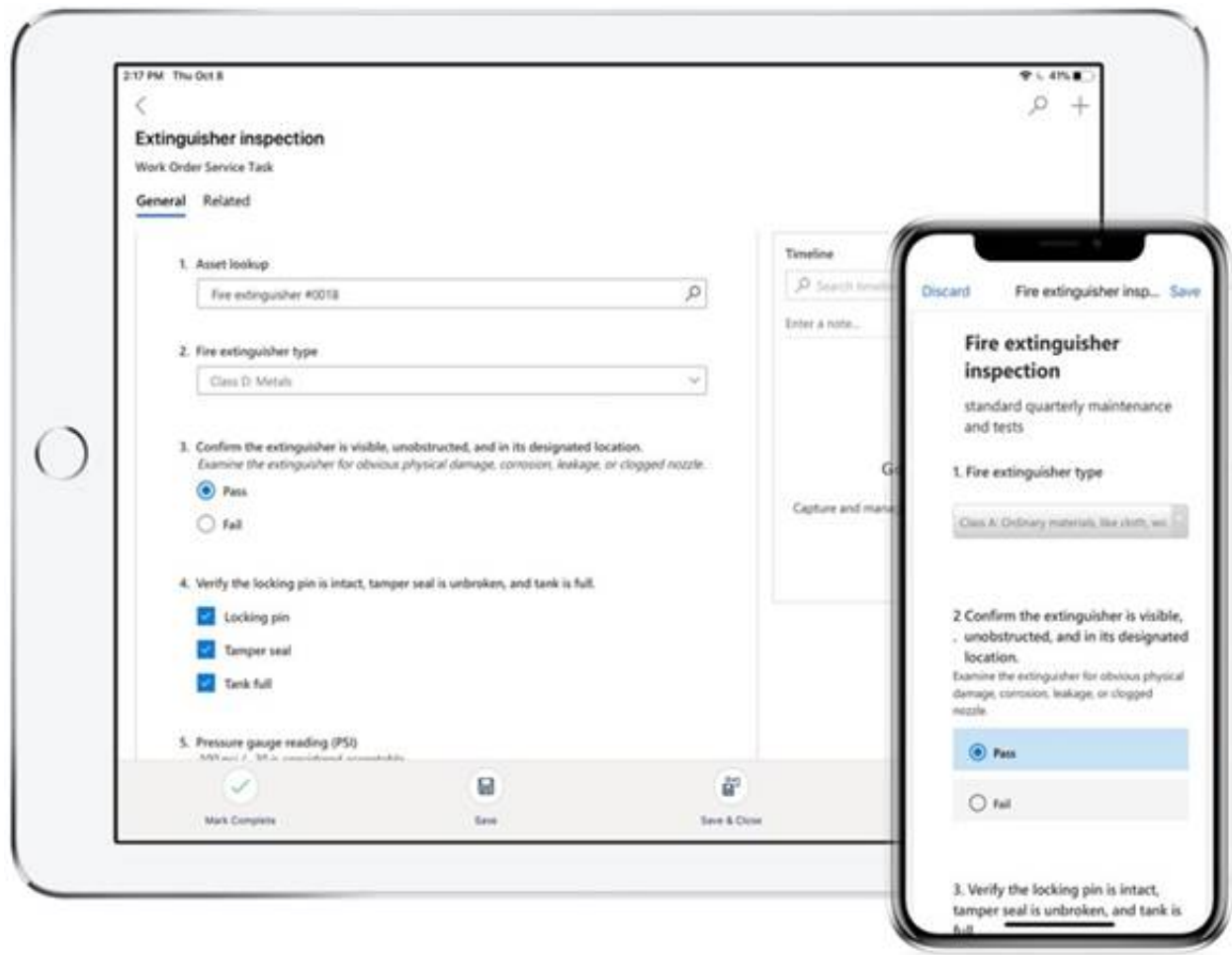
In this example, you're a car retailer tracking the sales team's average sales per month. The needle represents a 140 cars sales goal. The minimum possible average sales is 0 and the maximum is 200. The blue shading shows that the team is averaging approximately 120 sales this month.

Box 2: Add an inspection order to the work order form

You can add inspections to work orders in Dynamics 365 Field Service.

Field Service inspections are digital forms that technicians use to quickly and easily answer a list of questions as part of a work order. The list of questions can include safety protocols, pass-and-fail tests for a customer asset, an interview with a customer, or other audits and assessments performed before, during, or after a work order.

Example:



NEW QUESTION 11

- (Topic 3)

You need to resolve the issue reported during testing. What should you do?

- A. Create an image data type within the Inspection Order table.
- B. Create a relationship within the Inspection Order table to the originating inspection order.
- C. Create a Quick View form for the inspection order.

Answer: B

Explanation:

Need to store the image in the table.

Scenario: The company uses photos of employees to generate employee badges. Photos are uploaded into Microsoft 365 user profiles.

NEW QUESTION 12

HOTSPOT - (Topic 3)

You need to recommend components to meet the re-inspection requirements.

Which components should you recommend? To answer, select the appropriate options in the answer area.

NOTE: Each correct selection is worth one point.

Requirement

Component

Initiate the creation of re-inspection orders.

	▼
Dataflow	
Business rule	
Power Automate flow	

Automatically set overall inspection ratings based on the checklist ratings.

	▼
From event	
Business rule	
Custom action	
Rollup data type	

- A. Mastered
- B. Not Mastered

Answer: A

Explanation:

Box 1: Power Automate flow

Scenario: Inspection orders must be automatically marked for re-inspection should a machine fail inspection. The new inspection order must be created by using the originating inspection order as a template.

Box 2: Business rule

? By combining conditions and actions, you can do any of the following with business rules:

? Set column values

? Clear column values

? Set column requirement levels

? Show or hide columns

? Enable or disable columns

? Validate data and show error messages

? Create business recommendations based on business intelligence.

NEW QUESTION 15

- (Topic 3)

You need to manage user access to the app.

Which two connection types should you recommend? Each correct answer presents part of the solution.

NOTE: Each correct selection is worth one point.

A. Virtual table with a customer connector

Office 365 Outlook connector

B. Microsoft Dataverse connector

D. Office 365 Users connector

Answer: CD

Explanation:

Office 365 Users lets you access user profiles in your organization using your Office 365 account. You can use the Use the connection in your Power Platform app. Dataverse is part of the Microsoft 365 collaboration and productivity tools. Using federation, applications can connect to Dataverse using the same system user identities and credentials available in an Azure Active Directory based network.

Scenario:

? Users must be active employees of Fabrikam.

? Quality inspection app: Fabrikam is evaluating Microsoft Power Platform to determine whether it can meet the company's requirements for a manufacturing defect and quality inspection solution. Each machine produced must be subjected to a quality inspection at various points during production. Each machine must undergo a more extensive quality inspection before the machine can be shipped to the customer.

Reference:

<https://docs.microsoft.com/en-us/powerapps/maker/canvas-apps/connections/connection-office365-users>

NEW QUESTION 17

HOTSPOT - (Topic 3)

You need to recommend the appropriate components to meet the inspection requirements.

What should you recommend? To answer, select the appropriate options in the answer area.

NOTE: Each correct selection is worth one point.

Requirement	Solution
Prevent editing of finalized inspection orders.	<div> <div></div> <div> Business rule Security role User permission </div> </div>
Prepare documentation for failed inspection steps.	<div> <div></div> <div> Data flow Business rule Form property </div> </div>

A. Mastered

B. Not Mastered

Answer: A

Explanation:

Box 1: Security role

Microsoft Dataverse uses a role-based security model to help secure access to the database.

Scenario:

? You must prevent users from changing inspection order data once an inspection is marked as final.

? Supervisors must be able to modify standard checklists. Other employees must be prevented from modifying checklists.

Box 2: Data flow

Dataflows are a self-service, cloud-based, data preparation technology. Dataflows enable customers to ingest, transform, and load data into Microsoft Dataverse environments, Power BI workspaces, or your organization's Azure Data Lake Storage account.

Scenario: Provide a visual representation of the testing measurement limits for each step. Include an indication of how the measured value compares to

measurement limits and whether the measurement is within tolerance. Users must be able to configure the visualizations to display the minimum value and maximum value, and whether the reading is within the tolerance of a single targeted value. It must also be able to be used for maintenance inspections once the machine has been installed.

NEW QUESTION 20

- (Topic 3)

You need to recommend an environment for the inspection solution. Where should you recommend installing the solution?

- A. within the Dynamics 365 Field Service environment
- B. in a separate Microsoft Dataverse environment in the same instance as the Dynamics 365 Field Service environment
- C. in a separate Dataverse environment with Dynamics 365 apps enabled
- D. within the default Dynamics 365 Field Service environment

Answer: A

NEW QUESTION 22

DRAG DROP - (Topic 4)

You are designing a solution to automate the following processes:

- Import data into Microsoft Dataverse from systems that have an API available.
- Import data into Microsoft Dataverse from systems that do not have an API available.
- Validate that contacts in a Microsoft Excel file Dataverse forms in a specified order. You need to implement automation methods.

Which components should you use' To answer, drag the appropriate components to the correct requirements. Each component may be used once, more than once, or not at all. You may need to drag the split bar between panes or scroll to view content.

NOTE: Each correct selection is worth one point

Components

Cloud flow

Business process flow

Robotic process automation

Answer Area

Requirement

Interact with applications that do not have an API.

Guide users through business steps in a specific order.

Interact with applications that have an API.

Component

- A. Mastered
- B. Not Mastered

Answer: A

Explanation:

Components

Cloud flow

Business process flow

Robotic process automation

Answer Area

Requirement

Interact with applications that do not have an API.

Guide users through business steps in a specific order.

Interact with applications that have an API.

Component

Robotic process automation

Business process flow

Cloud flow

NEW QUESTION 23

HOTSPOT - (Topic 4)

A company uses Dynamics 365 Sales and Power BI.

Sales managers must be able to keep track of changes to their pipeline in the following ways:

- ? Notify the sales managers when an Opportunity changes sales stage.
- ? Notify the sales managers when the pipeline drops below 2.5M USD.
- ? When reviewing the pipeline in Power BI, a sales executive must be able to add a Playbook to an Opportunity.

You need to recommend a solution that meets the company requirements.

Which combination of solutions should you recommend? To answer, select the appropriate option in the answer area.

NOTE: Each correct selection is worth one point.

Notify the sales manager when an Opportunity changes sales stage.

Microsoft Power Automate, Microsoft Dataverse connector, and Microsoft Office 365 Outlook connector

Microsoft Power Automate, Microsoft Dataverse connector, and Microsoft Office 365 users

Microsoft Power Automate, data alerts, and Microsoft Office 365 connector

Notify the sales managers when the pipeline drops below 2.5 USD.

Microsoft Power Automate, Microsoft Dataverse connector, and Microsoft Office 365 Outlook connector

Microsoft Power Automate, Power BI data alerts, and Microsoft Office 365 connector

Microsoft Power Automate, Power BI, Power Apps, and Microsoft Dataverse connector

When reviewing the pipeline in Power BI, a sales executive must be able to add a Playbook to an Opportunity.

Power BI, Power Apps, Microsoft Dataverse connector, and Microsoft Office 365 Outlook connector

Microsoft Power Automate, Data alerts, Microsoft Dataverse connector, and Microsoft Office 365 users

Microsoft Power Automate, Data alerts, and Microsoft Office 365 connector

Microsoft Power Automate, Power BI, Power Apps, and Microsoft Dataverse connector

- A. Mastered
- B. Not Mastered

Answer: A

Explanation:

Box 1: Microsoft Power Automate, Microsoft Dataverse connector, and Microsoft 365 Outlook connector

Use Microsoft Dataverse as the data source.

While Power Automate is a robust tool with ever-expanding capabilities, it also handles simple tasks with grace. A universal business need for many organizations is the ability to automate email notifications based on certain criteria: an opportunity is won, send an email to the sales manager; a case is closed, send an email to

Passing Certification Exams Made Easy

visit - https://www.2PassEasy.com

the customer; a work order is completed, send an email to the customer.

Power Automate can easily accommodate this using the Microsoft 365 Outlook connector.

Box 2: Microsoft Power Automate, Power BI data alerts, and Microsoft 365 connector Data alerts in the Power BI service: Set alerts to notify you when data in your dashboards changes beyond limits you set.

Box 3: Microsoft Power Automate, Power BI, Power Apps, and Microsoft Dataverse connector

NEW QUESTION 25

- (Topic 4)

You are a Power Apps architect for a company. The IT administrator designs a Power Apps app that is ready to be tested. The company uses application lifecycle management (ALM).

Each version and solution component must be tracked as it is tested.

You need to recommend a strategy to deploy solutions for the user acceptance testing environment.

What should you recommend?

- A. Use Package Deployer and deploy a managed solution.
- B. Use Package Deployer and deploy an unmanaged solution.
- C. Use Solution Packager and deploy a managed solution.
- D. Use Solution Packager and deploy an unmanaged solution.

Answer: D

Explanation:

Solution Packager is a tool that can unpack a compressed solution file into multiple XML files and other files, so they can be easily managed by a source control system.

Unmanaged solution: An open solution with no restrictions on what can be added, removed, or modified. This is recommended during development of a solution.

C: Managed solution

A completed solution ready to be imported into an organization. Once imported, components can't be added or removed, although they can optionally allow further customization. This is recommended when development of the solution is complete.

Reference:

<https://docs.microsoft.com/en-us/power-platform/alm/solution-packager-tool>

NEW QUESTION 26

- (Topic 4)

A company wants to create a Power Automate flow that posts marketing events to social media.

The company must ensure that the postings adhere to regulatory requirements for handling of personally identifiable information (PII) data. The company will not post events to unauthorized social media platforms.

You need to ensure that the requirement is met.

Which two actions should you perform? Each correct answer presents part of the solution.

NOTE: Each correct selection is worth one point.

- A. Configure the relevant connector so that is part of the Non-Business data group category.
- B. Create a security role to prevent data export.
- C. Configure an Azure Active Directory (AAD) security role for the maker to the environment.
- D. Create a Data Loss Protection (DLP) policy.
- E. Configure the relevant connector so that it is part of the Blocked data group category.

Answer: DE

Explanation:

DLP policies enforce rules for which connectors can be used together by classifying connectors as either Business or Non-Business. If you put a connector in the Business group, it can only be used with other connectors from that group in any given app or flow. Sometimes you might want to block the usage of certain connectors altogether by classifying them as Blocked.

Reference:

<https://docs.microsoft.com/en-us/power-platform/admin/wp-data-loss-prevention>

NEW QUESTION 30

HOTSPOT - (Topic 4)

A company reports the following issues with an existing data management system.

? Users cannot search for specific records by using a user-friendly ID or record identifier.

? Users occasionally enter data into fields that is not required.

? The record form displays all fields. Many of the fields are not used.

You need to ensure that the Power Platform solution will ensure data quality can be properly maintained.

Which component should you use? To answer, select the appropriate options in the answer area.

NOTE: Each correct selection is worth one point.

Requirement

Solution

Ensure that users can search for specific records by using a unique identifier.

▼

Business rule

Autonumber column

Business process flow

Duplicate detection rule

You must prevent data entry into columns that do not require entry.

▼

Business rule

Real time workflow

Business process flow

Duplicate detection rule

Answer:

Requirement

Solution

Ensure that users can search for specific records by using a unique identifier.

▼

Business rule

Autonumber column

Business process flow

Duplicate detection rule

You must prevent data entry into columns that do not require entry.

▼

Business rule

Real time workflow

Business process flow

Duplicate detection rule

- A. Mastered
- B. Not Mastered

Answer: A

Explanation:

Box 1: Autonumber column

Autonumber columns are columns that automatically generate alphanumeric strings whenever they are created.

Box 2: Business rule

By combining conditions and actions, you can do any of the following with business rules:

- ? Enable or disable columns
- ? Set column values
- ? Clear column values
- ? Set column requirement levels
- ? Show or hide columns
- ? Validate data and show error messages
- ? Create business recommendations based on business intelligence.

NEW QUESTION 35

- (Topic 4)

You are designing a Power Platform solution for a company. The company issues each employee a tablet device.

The company wants to simplify the opportunity management processes and automate when possible. The company identifies the following requirements:

- ? Users must have a visual guide to know which data to enter in each step of the opportunity management process.
- ? The system must automatically assign the opportunity to a manager for approval once all data is entered.

? The system must notify an assignee each time an opportunity is assigned to them by using push notifications.

? When a user selects a push notification, the associated opportunity must display.

You need to recommend the Power Platform components that will meet their requirements.

Which three Power Platform components should you recommend? Each correct answer presents part of the solution.

NOTE: Each correct selection is worth one point.

- A. Business process flows
- B. Power Apps mobile apps
- C. Power Virtual Agents chatbots
- D. Power Automate desktop flows
- E. Power Automate cloud flows

Answer: ABE

Explanation:

A: Use business process flows to define a set of steps for people to follow to take them to a desired outcome. These steps provide a visual indicator that tells people where they are in the business process.

B: Push notifications are used in Power Apps mobile to engage app users and help them prioritize key tasks. In Power Apps, you can create notifications for Power Apps mobile by using the Power Apps Notification connector. You can send notifications to any app that you create in Power Apps.

E: Create a cloud flow when you want your automation to be triggered either automatically, instantly, or via a schedule.

_ Automated flows: Create an automation that is triggered by an event such as arrival of an email from a specific person, or a mention of your company in social media.

Reference:

<https://docs.microsoft.com/en-us/power-automate/business-process-flows-overview> <https://docs.microsoft.com/en-us/powerapps/mobile/power-apps-mobile-notification>

NEW QUESTION 38

HOTSPOT - (Topic 4)

You are implementing a Microsoft Power Platform solution for a customer to include data migration from multiple legacy systems. The data includes lead and contact data. The environment includes an assigned security group.

The following issues have occurred during a go-live deployment attempt:

- Lookup values are not populated when data migration is complete.
- Data is being added to the contacts table that is not part of the data migration.
- Various users do not appear in the list of users available for record assignment. You need to resolve the go-live deployment issues.

How should you resolve the issue? To answer, select the appropriate options in the answer area.

NOTE: Each correct selection is worth one point.

Answer Area

Issue	Solution
Lookup values are not populated when data migration is complete.	<div> Split the import data into smaller import batches. Import the data by using an application user. Split the import data into smaller import batches. Disable all Power Automate flows, plug-ins, and workflows. Run data migration in a specific order. </div>
Data is being added to the contacts table that is not part of the data migration.	<div> Disable all Power Automate flows, plug-ins, and workflows. Disable auditing. Import the data by using an application user. Disable all Power Automate flows, plug-ins, and workflows. Split the import data into smaller import batches. </div>
Various users do not appear in the list of users available for record assignment.	<div> Add to a security group. Add to a security group. Add a security role. Add a Microsoft 365 role. Add a field security profile. </div>

- A. Mastered
B. Not Mastered

Answer: A

Explanation:

NEW QUESTION 41

- (Topic 4)

You are designing a Microsoft Power Platform solution for an automobile parts manufacturer. You create the following tables:

Table	Comments
Assemblies	For each assembly record, there will be one or more rows in the Parts table. When the ownership for an assembly record changes, the related parts records must be updated.
Parts	Rows in the Parts table must not be deleted when an assembly is deleted.

You need to recommend a relationship behavior. Which relationship behavior should you recommend?

- A. Referential, Restrict Delete
B. Custom
C. Parental
D. Referential, Remove Link

Answer: A

Explanation:

Restrict Delete: Prevent the Referenced table record from being deleted when referencing tables exist.

Reference:

<https://docs.microsoft.com/en-us/powerapps/developer/data-platform/configure-entity-relationship-cascading-behavior>

NEW QUESTION 43

- (Topic 4)

You are designing a self-service portal for a company. The portal must meet the following requirements:

? Customers must be able to submit and review cases.

? Customers must be able to chat with service representatives in near real time.

? Allow service representatives to select cases from queues and use knowledge articles to resolve customer concerns.

You need to recommend solutions for the company that do not require custom development.

Which three apps or services should you recommend? Each correct answer presents part of the solution.

NOTE: Each correct selection is worth one point.

- A. Dynamics 365 Field Service
- B. Dynamics 365 Customer Service
- C. Omnichannel for Customer Service
- D. Customer Insights
- E. Customer self-service portal

Answer: BCE

Explanation:

Reference:

<https://docs.microsoft.com/en-us/powerapps/maker/portals/portal-templates>

<https://docs.microsoft.com/en-us/dynamics365/customer-service/embed-chat-widget-portal>

NEW QUESTION 48

- (Topic 4)

You are designing a new Microsoft Power Platform solution for a wedding organizer company.

The company uses a third-party application and plans to migrate the data into Microsoft Dataverse for the new solution. The third-party application has an API that can be connected to programmatically for data migration purposes.

You need to migrate the unique IDs belonging to the records from the third-party application.

Which two Microsoft Dataverse column types should you use to store this information? Each correct answer presents a complete solution.

- A. Text Area
- B. Unique Identifier
- C. Plain Text
- D. Rich Text
- E. Float

Answer: B

NEW QUESTION 50

HOTSPOT - (Topic 4)

You design a Power Platform solution for a customer. The solution uses Microsoft Dataverse as the data store. You are managing the go-live process for the solution.

The customer reports the following performance issues:

? Form load time is much slower than it was during testing.

? Overall system performance has been significantly slower that it was during testing.

You need to recommend how to troubleshoot system performance.

Which actions should you recommend? To answer, select the appropriate options in the answer area.

NOTE: Each correct selection is worth one point.

Performance issue	Action
Slow form load times	<div> <div></div> <div> Review workflows associated with the form events. Review QuickFind properties for the fields on the form. Review the fields that are on the form. </div> </div>
Overall slow system performance	<div> <div></div> <div> Change all security roles from global read permissions to business unit permissions. Review one to many relationships to verify whether cascade settings are necessary. Change security roles from global read access to business unit to provide better performance. </div> </div>

- A. Mastered
- B. Not Mastered

Answer: A

Explanation:

Box 1: Review the fields that are on the form

Keep the number of table columns (fields) to a minimum.

The more table columns (formerly referred to as fields) you have in a form, the more data that needs to be downloaded to view each record.

Box 2: Review one to many relationships to verify whether cascade settings are necessary.

NEW QUESTION 52

HOTSPOT - (Topic 4)

You are designing a Power Platform solution for a company. You have the following requirements:

? Users in the human resources department must be able to create tasks.

? Users in the human resources department must be able to assign cases to other users.

You need to recommend security settings to the company.

What should you recommend? To answer, select the appropriate options in the answer area.

NOTE: Each correct selection is worth one point.

Business requirement

Solution

Users in the human resources department must be able to create tasks.

▼

Assign only Create rights to activities.

Assign Create and Read rights to activities.

Assign user-level assign rights to the human resources case table.

Assign organization-level rights to the human resources case table.

Users in the human resources department must be able to assign cases to other users.

▼

Assign only Create rights to activities.

Assign Create and Read rights to activities.

Assign user-level assign rights to the human resources case table.

Assign organization-level assign rights to the human resources case table.

Answer:

Business requirement

Solution

Users in the human resources department must be able to create tasks.

▼

Assign only Create rights to activities.

Assign Create and Read rights to activities.

Assign user-level assign rights to the human resources case table.

Assign organization-level rights to the human resources case table.

Users in the human resources department must be able to assign cases to other users.

▼

Assign only Create rights to activities.

Assign Create and Read rights to activities.

Assign user-level assign rights to the human resources case table.

Assign organization-level assign rights to the human resources case table.

- A. Mastered
- B. Not Mastered

Answer: A

Explanation:

Box 1: Assign only Create rights to activities

You require the same set of Dataverse privileges and access rights to work with custom activities as those required to work with custom entities. Task-based privileges, at the bottom of the form, give a user privileges to perform specific tasks, such as publish articles.

Box 2: Assign User-level assign rights to human resources case table.

Record-level privileges define which tasks a user with access to the record can do, such as Read, Create, Delete, Write, Assign, Share, Append, and Append To.

For user and team owned records, the access level choices for most privileges are tiered Organization, Business Unit, Business Unit and Child Business Unit or only the user's own records. That means for read privilege on contact, I could set user owned, and the user would only see their own records.

NEW QUESTION 57

HOTSPOT - (Topic 4)

A food distribution terminal uses Microsoft Dynamics 365 Field Service and Microsoft Dynamics 365 Supply Chain Management to manage inventory and fulfill customer orders. Customers place custom orders through a Power Pages customer portal. Customers can enter different receiving times and dates on fresh produce order lines.

The terminal needs to expose fresh produce order details from Dynamics 365 to its customers in the portal. Customers can control how much detail they see in the portal.

You need to design a solution that meets the requirements. Which mechanism should you use for each requirement?

To answer, select the appropriate options in the answer area. NOTE: Each correct selection is worth one point.

Answer Area

Requirement	Mechanism
Retrieve data representing fresh produce details.	<div>Custom connector ▼</div> <div>Basic form</div> <div>Data gateway</div> <div>Advanced form</div> <div>Custom connector</div>
Expose the fresh produce details.	<div>Portal Management app ▼</div> <div>Portal Management app</div> <div>Customer Service Insights</div> <div>Microsoft Power Platform admin center</div> <div>Microsoft 365 Apps admin center</div>

Answer:

Answer Area

Requirement

Retrieve data representing fresh produce details.

Expose the fresh produce details.

Mechanism

Custom connector

Basic form

Data gateway

Advanced form

Custom connector

Portal Management app

Portal Management app

Customer Service Insights

Microsoft Power Platform admin center

Microsoft 365 Apps admin center

- A. Mastered
- B. Not Mastered

Answer: A

NEW QUESTION 58

- (Topic 4)

Note: This question is part of a series of questions that present the same scenario. Each question in the series contains a unique solution that might meet the stated goals. Some question sets might have more than one correct solution, while others might not have a correct solution.

After you answer a question in this section, you will NOT be able to return to it. As a result, these questions will not appear in the review screen.

A company plans to automate the expense approval process.

Users currently enter data into an on-premises SQL Server database. You need to allow users to submit expenses from mobile devices.

Solution: Create a canvas app for expense data entry. Create a custom connector. Create a cloud flow for approval and use the custom connector to add data to the SQL Server database.

Does the solution meet the goal?

- A. Yes
- B. No

Answer: B

Explanation:

NEW QUESTION 60

DRAG DROP - (Topic 4)

You are a Microsoft Power Platform architect.

You must identify and document your organization's business processes to identify opportunities for automaton.

You need to run task mining in process advisor.

In which order should you perform the actions? To answer, move all actions from the list of actions to the answer area and arrange them in the correct order.

Actions

Prepare processes and recordings.

Analyze processes.

Visualize processes.

Identify automation recommendations.

Share processes.

Answer area

- A. Mastered
- B. Not Mastered

Answer: A

Explanation:

Actions

Prepare processes and recordings.

Analyze processes.

Visualize processes.

Identify automation recommendations.

Share processes.

Answer area

Prepare processes and recordings.

Analyze processes.

Visualize processes.

Identify automation recommendations.

Share processes.

NEW QUESTION 62

DRAG DROP - (Topic 4)

You are reviewing a list of business requirements submitted by a plumbing company. The company has the following requirements:

- ? Send articles to technicians to allow technicians to help customers resolve issues.
- ? Track work progress and inspections at customer sites.
- ? Schedule technicians for service appointments.

You need to recommend solutions to meet the customer's requirements.
What should you recommend? To answer, drag the appropriate solutions to the correct business requirements. Each solution may be used once, more than once, or not at all. You may need to drag the split bar between panes or scroll to view content.
NOTE: Each correct selection is worth one point.

Solutions

Dynamics 365 Field Service

Dynamics 365 Customer Voice

Dynamics 365 Customer Insights

Answer Area

Business requirement	Solution
Send articles to technicians to allow technicians to help customers resolve issues.	<div>Solution</div>
Track work progress and inspections at customer sites.	<div>Solution</div>
Schedule technicians for service appointments.	<div>Solution</div>

Answer:

Solutions

Dynamics 365 Field Service

Dynamics 365 Customer Voice

Dynamics 365 Customer Insights

Answer Area

Business requirement	Solution
Send articles to technicians to allow technicians to help customers resolve issues.	<div>Dynamics 365 Customer Insights</div>
Track work progress and inspections at customer sites.	<div>Dynamics 365 Field Service</div>
Schedule technicians for service appointments.	<div>Dynamics 365 Field Service</div>

- A. Mastered
- B. Not Mastered

Answer: A

Explanation:

Box 1: Dynamics 365 Customer Insights
Dynamics 365 Customer Insights is a part of Microsoft's customer data platform (CDP) that helps deliver personalized customer experiences. The platform's capabilities provide insights into who your customers are and how they engage with your platform. Unify customer data across multiple sources to get a single view of customers.

Box 2: Dynamics 365 Field Service
Dynamics 365 Field Service helps to:

- _ Organize and track resolution of customer issues
- _ Keep customers updated with the status of their service call and when it's resolved

Note: The Dynamics 365 Field Service business application helps organizations deliver onsite service to customer locations. The application combines workflow automation, scheduling algorithms, and mobility to set up mobile workers for success when they're onsite with customers fixing issues.

The Field Service application enables you to: Improve first-time fix rate
Complete more service calls per technician per week
Manage follow-up work and take advantage of upsell and cross sell opportunities Reduce travel time, mileage, and vehicle wear and tear
Organize and track resolution of customer issues Communicate an accurate arrival time to customers
Provide accurate account and equipment history to the field technician
Keep customers updated with the status of their service call and when it's resolved Schedule onsite visits when it's convenient for the customer
Avoid equipment downtime through preventative maintenance

Box 3: Dynamics 365 Field Service
Dynamics 365 Field Service: Schedule onsite visits when it's convenient for the customer.

NEW QUESTION 65

HOTSPOT - (Topic 4)
An organization is optimizing its Microsoft Power Platform solution architecture. The optimization needs to address the following:
? Label names for option sets and multiselect option sets should be added as separate fields for reporting.
? Users complain that when a case is assigned to another user, all the activities are also assigned.
? Some Power BI reports based on Microsoft Dataverse data need near-real-time updating.
You need to recommend a design solution to meet these requirements.
What should you recommend? To answer, select the appropriate option in the answer area.
NOTE: Each correct selection is worth one point.

Requirement	Design
Users report that when a case is assigned to another user, all activities are also assigned.	<div>▼</div> <div>For each activity entity relationship, set Cascading rules to Configurable Cascading and Assign to Cascade None</div> <div>Do not implement, but train users on best practices for assigning cases.</div> <div>Create a 1:N relationship between the user entity/table and the Activities table.</div>
Some Power BI reports based on Microsoft Dataverse data require near-real-time updates.	<div>▼</div> <div>Create Power BI reports using the Microsoft Dataverse connector.</div> <div>Implement the Data Export Service; create Power BI reports that point to Microsoft Azure SQL Database.</div> <div>Create Power BI dataflows based on the Microsoft Dataverse connector; point the Power BI report to the dataflows.</div>

- A. Mastered
 B. Not Mastered

Answer: A

Explanation:

Requirement	Design
Users report that when a case is assigned to another user, all activities are also assigned.	<div>▼</div> <div>For each activity entity relationship, set Cascading rules to Configurable Cascading and Assign to Cascade None</div> <div>Do not implement, but train users on best practices for assigning cases.</div> <div>Create a 1:N relationship between the user entity/table and the Activities table.</div>
Some Power BI reports based on Microsoft Dataverse data require near-real-time updates.	<div>▼</div> <div>Create Power BI reports using the Microsoft Dataverse connector.</div> <div>Implement the Data Export Service; create Power BI reports that point to Microsoft Azure SQL Database.</div> <div>Create Power BI dataflows based on the Microsoft Dataverse connector; point the Power BI report to the dataflows.</div>

NEW QUESTION 70

- (Topic 4)

A pharma company uses a proprietary system to manage its chemical experiments. The company uses Microsoft Dynamics 365 Project Operations to manage lab staff and resources.

Employees manually update Project Operations data with data from their proprietary system as needed. Employees are not able to provide a definite schema for their data.

You need to provide a solution that will allow employees to configure their own automatic updates.

Which component should you use?

- A. Dataflows
 B. Custom connectors
 C. Data gateways
 D. Microsoft Power Automate flows

Answer: D

NEW QUESTION 73

DRAG DROP - (Topic 4)

A new customer asks you to design a solution for a Power Apps app that uses Microsoft Dataverse.

The customer wants to keep the service process simple and save on both licensing and development time.

You need to recommend solutions for the customer.

What should you recommend? To answer, drag the appropriate setting to the correct drop targets. Each source may be used once, more than once, or not at all.

You may need to drag the split bar between panes or scroll to view content.

NOTE: Each correct selection is worth one point.

Solutions	Answer Area	
	Scenario	Solution
Canvas app	Show the app in Microsoft Outlook.	Solution
Model-driven app	Use Universal Resource Scheduling.	Solution
Dynamics 365 Customer Service	Take notes on a mobile phone and record GPS coordinates automatically.	Solution

Answer:

Solutions	Scenario	Solution
Canvas app	Show the app in Microsoft Outlook.	Model-driven app
Model-driven app	Use Universal Resource Scheduling.	Dynamics 365 Customer Service
Dynamics 365 Customer Service	Take notes on a mobile phone and record GPS coordinates automatically.	Canvas app

- A. Mastered
 B. Not Mastered

Answer: A

Explanation:

Box 1: Model-drive app

Integration with Microsoft Outlook requires a Model-driven app.

Box 2: Dynamics 365 Customer Service

Schedule anything in Dynamics 365 using Universal Resource Scheduling. You can enable scheduling for any entity in Dynamics 365 Sales, Field Service, Customer Service, and Project Service Automation, including custom entities.

Box 3: Canvas app

NEW QUESTION 78

- (Topic 4)

A client uses Dynamics 365 Sales, Power BI datasets, and Power BI dataflows.

The Dynamics 365 Sales implementation has security roles that restrict data export. You need to ensure that data has the same restrictions in Power BI as it does in Dynamics 365 Sales.

You need to design the security to avoid sensitive data from being seen.

Which two actions should you recommend? Each correct answer presents part of the solution.

NOTE: Each correct selection is worth one point.

- A. Use Microsoft Dataverse restrictions before setting up the Power BI reports.
 B. Limit the role in Dynamics 365 Sales to only data allowed so it cannot be exported to Microsoft Excel.
 C. Limit the role and ensure that exporting to Microsoft Excel is not allowed in both Dynamics 365 Sales and Power BI.
 D. Share Power BI dashboards only with users who are supported to see this data.

Answer: AB

Explanation:

A: When you share a dashboard or report, the people you share it with can view it and interact with it, but can't edit it. They see the same data that you see in the dashboard and reports and get access to the entire underlying dataset unless row-level security (RLS) is applied to the underlying dataset.

B: Depending on the sensitivity of an organization's data, it is often necessary to disable the ability to export or print reports.

Reference:

<https://docs.microsoft.com/en-us/power-bi/collaborate-share/service-share-dashboards>

NEW QUESTION 79

DRAG DROP - (Topic 4)

You are overseeing the data migration for a Microsoft Power Platform solution.

The migration team is performing a test migration with a subset of data. The migration team reports the following findings:

? Users who own account rows are receiving system generated emails.

? Data that is not part of the migration is being added to the Contact and Appointment tables.

? The size of the log listed on the Power Platform admin center Capacity page has increased significantly.

You need to recommend strategies to resolve the reported issues.

What should you recommend? To answer, drag the appropriate resolution to the correct migration problem. Each resolution may be used once, more than once, or not at all. You may need to drag the split bar between panes or scroll to view content.

NOTE: Each correct selection is worth one point.

Resolution strategies	Migration issue	Resolution strategy
Disable auditing.	Users who own account rows are receiving system generated emails.	
Disable duplicate detection.	Data that is not part of the migration is being added to the Contact and Appointment tables.	
Disable all custom JavaScript functions.	The size of the log listed on the Power Platform admin center Capacity page has increased significantly.	
Disable all workflows, plug-ins, and Power Platform admin center		

Answer:

Resolution strategies	Migration issue	Resolution strategy
Disable auditing.	Users who own account rows are receiving system generated emails.	Disable duplicate detection.
Disable duplicate detection.	Data that is not part of the migration is being added to the Contact and Appointment tables.	Disable all workflows, plug-ins, and Power Platform admin center
Disable all custom JavaScript functions.	The size of the log listed on the Power Platform admin center Capacity page has increased significantly.	Disable auditing.
Disable all workflows, plug-ins, and Power Platform admin center		

- A. Mastered
B. Not Mastered

Answer: A

Explanation:

Box 1: Disable duplicate detection

Duplicate detection has rules for sending emails.

Box 2: Disable all workflows, plug-ins, and Power Platform admin center

Box 3: Disable auditing

Auditing affects the size of the log file.

NEW QUESTION 80

HOTSPOT - (Topic 4)

You are performing a fit gap requirements analysis.

You need to select Microsoft Power Platform components to satisfy the requirements. Which components should you use? To answer, select the appropriate options in the answer area.

NOTE: Each correct selection is worth one point.

Answer Area

Requirement	Component
Coordinate long-term end-to-end delivery of financial counseling services to farmers.	<div>Model-driven app</div> <div>Model-driven app</div> <div>Power Virtual Agents</div> <div>Dynamics 365 Customer Voice</div>
Manage project accounting and recognize revenue compliant with international financial reporting standards.	<div>Dynamics 365 Finance</div> <div>Dynamics 365 Project Operations</div> <div>Dynamics 365 Field Service</div> <div>Dynamics 365 Finance</div>
Notify users of their overdue tasks on a daily basis.	<div>Power Automate</div> <div>Power Automate</div> <div>Power Virtual Agents</div> <div>AppSource</div>
Notify users of their overdue tasks on a daily basis.	<div>Power Automate</div> <div>Power Automate</div> <div>Power Virtual Agents</div> <div>AppSource</div>

- A. Mastered
B. Not Mastered

Answer: A

Explanation:

Answer Area

Requirement	Component
Coordinate long-term end-to-end delivery of financial counseling services to farmers.	<div>Model-driven app</div> <div>Model-driven app</div> <div>Power Virtual Agents</div> <div>Dynamics 365 Customer Voice</div>
Manage project accounting and recognize revenue compliant with international financial reporting standards.	<div>Dynamics 365 Finance</div> <div>Dynamics 365 Project Operations</div> <div>Dynamics 365 Field Service</div> <div>Dynamics 365 Finance</div>
Notify users of their overdue tasks on a daily basis.	<div>Power Automate</div> <div>Power Automate</div> <div>Power Virtual Agents</div> <div>AppSource</div>
Notify users of their overdue tasks on a daily basis.	<div>Power Automate</div> <div>Power Automate</div> <div>Power Virtual Agents</div> <div>AppSource</div>

NEW QUESTION 83

- (Topic 4)

A company is struggling to gather insights from won and lost opportunities.

Users must be able to access the company's solution from mobile and desktop devices. The solution must meet the following requirements:

- Track opportunities and reasons for the win or loss of opportunities in the context of other related data.
- Display data to users as charts and tables and provide drill-through capabilities.

You need to recommend a Microsoft Power Platform tool to help the client visualize the data. Which two technologies should you recommend? Each correct answer presents a complete solution. NOTE: Each correct selection is worth one point.

- A. Power BI
- B. Power Virtual Agents
- C. Power Apps
- D. Power Automate

Answer: AC

NEW QUESTION 85

DRAG DROP - (Topic 4)

You are designing data loss policies for a Microsoft Power Platform implementation. You have the following requirements:

- Solutions that use the HTTP connector must not include any other connectors.
- Prevent the use of the Microsoft Forms connector.
- Allow the use of the Azure DevOps connector.

You need to determine in which data policy group to add each connector.

Data policy groups	Connector	Data policy group
Business	HTTP connector	
Non-business	Azure DevOps connector	
Blocked	Microsoft Forms connector	

- A. Mastered
- B. Not Mastered

Answer: A

Explanation:

Box 1: Business

If you put a connector in the Business group, it can only be used with other connectors from that group in any given app or flow.

Box 2: Non-business

DLP policies enforce rules for which connectors can be used together by classifying connectors as either Business or Non-Business.

Box 3: Blocked

Sometimes you might want to block the usage of certain connectors altogether by classifying them as Blocked.

Data policy group Business blocked

NEW QUESTION 90

HOTSPOT - (Topic 4)

A company has a Power Platform environment that connects to a third-party marketing application.

The company reports that the data in the Power Platform lead table does not match data from the marketing application.

Issues include:

- _ The owner data in the lead table and the third-party application do not match.
- _ The Topic column has more information than the related record from the marketing application.
- _ There are differences in how telephone numbers are formatted. You need to determine which processes are causing the issues.

Which three processes may be causing the differences observed? Each correct answer presents a complete solution.

NOTE: Each correct selection is worth one point.

Issue	Solution
Migration processes fail due to operation timeouts.	<div><div></div><div><div>Increase multithreading and/or batch size settings.</div><div>Decrease multithreading and/or batch size settings.</div><div>Ensure you are loading data into all tables at the same time.</div><div>Ensure you are loading data into tables in a particular order.</div></div></div>
Records that include lookup columns often fail to load.	<div><div></div><div><div>Increase multithreading and/or batch size settings.</div><div>Decrease multithreading and/or batch size settings.</div><div>Ensure you are loading data into all tables at the same time.</div><div>Ensure you are loading data into tables in a specific order.</div></div></div>

Answer:

Issue

Solution

Migration processes fail due to operation timeouts.

<div> <div></div> <div></div> </div>
<div> <div></div> <div></div> </div>
<div> <div></div> <div></div> </div>
<div> <div></div> <div></div> </div>

Records that include lookup columns often fail to load.

<div> <div></div> <div></div> </div>
<div> <div></div> <div></div> </div>
<div> <div></div> <div></div> </div>
<div> <div></div> <div></div> </div>

- A. Mastered
- B. Not Mastered

Answer: A

Explanation:

Box 1: Increase multithreading and/or batch size settings
Box 2: Ensure you are loading data in a specific order.
Load the base tables in the hierarchies first.

NEW QUESTION 94

- (Topic 4)

A company is creating a Microsoft Power Platform app to enable employees to log daily time entries. Employee user accounts are in multiple Azure AD tenants and are not located in the tenant that is running the app.

Employees must be added as Azure AD guest accounts within the tenant that will be running the app. Employees must access the model-driven app by being a member of a security team. The security team has been assigned the Employee Security role. Employees must create personal views of records to view within the system.

You need to implement a security solution. Which privilege should you use?

- A. Direct basic level
- B. Azure AD security group
- C. Team
- D. Shared app access

Answer: C

NEW QUESTION 96

HOTSPOT - (Topic 4)

A company uses Microsoft Dataverse to store patient Information-Patient information is managed using Dataverse forms. The company must enforce the following rules to manage data quality:

- Show or hide tabs in the main form based on the column value selected.
- Add a discount code automatically when a new patient row is added. You need to recommend a solution.

What should you recommend? To answer, select the appropriate options in the answer area.

NOTE: Each correct selection is worth one point.

Answer Area

Requirement

Show or hide tabs in the main form based on the column value selected.

Add a discount code automatically when a new patient row is added.

Solution

<div> <div></div> <div></div> </div>
<div> <div></div> <div></div> </div>
<div> <div></div> <div></div> </div>
<div> <div></div> <div></div> </div>
<div> <div></div> <div></div> </div>

- A. Mastered
- B. Not Mastered

Answer: A

Explanation:

Answer Area

Requirement

Show or hide tabs in the main form based on the column value selected.

Add a discount code automatically when a new patient row is added.

Solution

Business process flow
Plug-in
Client script
Business rule
Business process flow

Business rule
Client script
Business rule
Classic workflow
Business process flow

NEW QUESTION 98

DRAG DROP - (Topic 4)

A company plans to integrate Microsoft Power Platform with existing systems, including Microsoft Dynamics 365 Omni channel for Customer Service.

You need to recommend a solution for each requirement.

Which components should you recommend for the requirements?

To answer, drag the appropriate solutions to the correct requirements. Each solution may be used once, more than once, or not at all. You may need to drag the split bar between panes or scroll to view content.

Solutions	Requirement	Solution
Custom API	Display information about the contact in the Omnichannel app.	
Custom pages	Ensure only tables needed are exposed for integration purposes.	
Microsoft Power Virtual Agent	Display data hierarchy from other systems within Dynamics 365 without saving the data within Microsoft Dataverse.	

- A. Mastered
- B. Not Mastered

Answer: A

Explanation:

Solutions	Requirement	Solution
Custom API	Display information about the contact in the Omnichannel app.	Microsoft Power Virtual Agent
Custom pages	Ensure only tables needed are exposed for integration purposes.	Custom API
Microsoft Power Virtual Agent	Display data hierarchy from other systems within Dynamics 365 without saving the data within Microsoft Dataverse.	Custom pages

NEW QUESTION 99

- (Topic 4)

A company is struggling to gather insights from won and lost opportunities.

Users must be able to access the company's solution from mobile and desktop devices. The solution must meet the following requirements:

? context of other related data.

? Display data to users as charts and tables and provide drill-through capabilities.

You need to recommend a Power Platform tool to help the client visualize the data.

Which two technologies should you recommend? Each correct answer presents a complete solution.

NOTE: Each correct selection is worth one point.

- A. Power BI
- B. Power Automate
- C. Power Virtual Agents
- D. Power Apps

Answer: AD

Explanation:

A: Power BI is a business analytics service by Microsoft. It aims to provide interactive visualizations and business intelligence capabilities with an interface simple enough for end users to create their own reports and dashboards. It is part of the Microsoft Power Platform.

D: Power BI Apps are an easy way for designers to share different types of content at one time. App designers create the dashboards and reports and bundle them together into an app. The designers then share or publish the app to a location where you, the business user, can access it. Because related dashboards and reports are bundled together, it's easier for you to find and install in both the Power BI service (<https://powerbi.com>) and on your mobile device. After you install an app, you don't have to remember the names of a lot of different dashboards or reports because they're all together in one app, in your browser or on your mobile device.

Reference:

<https://docs.microsoft.com/en-us/power-bi/consumer/end-user-apps>

NEW QUESTION 100

HOTSPOT - (Topic 4)

You are designing a model-driven app that provides marketing, sales, and service operations to a company.

The app must integrate with the following systems and data sources:

- A third-party marketing system for lead generation and website submissions.
- A Microsoft Excel Online file that contains manufacturing data on relevant products.
- A separate Microsoft Dataverse environment.

You need to recommend Power Automate connectors for the app.

Which connections should you recommend? To answer, select the appropriate options in the answer area.
NOTE: Each correct selection is worth one point.

Answer Area

Data source	Connector type
Third-party marketing system	<div>Power BI connector</div> <div>SharePoint connector</div> <div>Custom connector</div> <div>Microsoft Forms connector</div>
Microsoft Dataverse environment	<div>SharePoint</div> <div>Azure Data Factory</div> <div>Microsoft Dataverse</div>

- A. Mastered
- B. Not Mastered

Answer: A

Explanation:

Box 1: Custom connector
While Azure Logic Apps, Microsoft Power Automate, and Microsoft Power Apps offer over 325+ connectors to connect to Microsoft and non-Microsoft services, you may want to communicate with services that aren't available as prebuilt connectors.
Box 2: Microsoft Dataverse
The Microsoft Dataverse connector provides several triggers to start your flows and many actions that you can use to create or update data in Dataverse while your flows run. You can use Dataverse actions even if your flows don't use a trigger from the Dataverse connector.
Use the Microsoft Dataverse connector to create cloud flows that start when data changes in Dataverse tables and custom messages.

NEW QUESTION 101

- (Topic 4)

You are a Power Platform consultant for an internet support company. The company lacks a budget to buy third-party ISVs or add-ons. The company requires a new system that achieves the following:

- ? All support issues must come in by email, need to be logged, and assigned to the support group.
- ? Accounts must synchronize with the parent company Oracle database.
- ? Reports must be sent to the executives on a weekly basis.
- ? No custom code will be used in the system.

You need to recommend the components that should be configured. Which two components should you recommend? Each correct answer presents part of the solution.
NOTE: Each correct selection is worth one point.

- A. Power Virtual Agents
- B. Microsoft Dataverse
- C. server-side synchronization
- D. Microsoft Customer Voice

Answer: BD

Explanation:

The Dynamics 365 Customer Voice data is stored in Microsoft Dataverse. Dynamics 365 Customer Voice is an enterprise feedback management application you can use to easily keep track of the customer metrics that matter the most to your business. ... It provides a personalized experience, enabling you to collect customer feedback and get relevant insights quickly and easily, all in a few clicks.
Reference:
<https://docs.microsoft.com/en-us/dynamics365/customer-voice/about> <https://docs.microsoft.com/en-us/dynamics365/customer-voice/data-flow>

NEW QUESTION 103

DRAG DROP - (Topic 4)

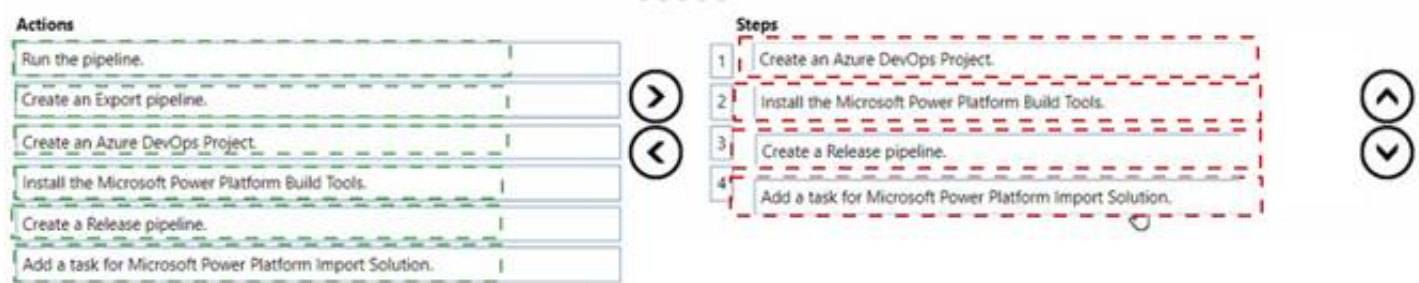
A company uses Microsoft Power Platform solutions. The company plans to set up application lifecycle management (ALM) capabilities to store the solutions in source control, which will be used to automate the release process. You need to set up the initial ALM infrastructure to store the solutions in source control. Which four actions should you perform in sequence? To answer, move the appropriate actions from the list of actions to the answer area and arrange them in the correct order.

Actions	Steps
Run the pipeline.	1
Create an Export pipeline.	2
Create an Azure DevOps Project.	3
Install the Microsoft Power Platform Build Tools.	4
Create a Release pipeline.	
Add a task for Microsoft Power Platform Import Solution.	

- A. Mastered
- B. Not Mastered

Answer: A

Explanation:



NEW QUESTION 104

DRAG DROP - (Topic 4)

A company plans to integrate a model-driven app with external data sources. The company has the following requirements:

- Consume data in its data warehouse from Microsoft Dataverse.
- Use a plug-in to retrieve information from an external service.

You need to recommend a Microsoft Azure component for each requirement.

Which Azure components should you recommend? To answer, drag the appropriate Azure components to the correct requirements.

Each Azure component may be used once, more than once, or not at all. You may need to drag the split bar between panes or scroll to view content.

NOTE: Each correct selection is worth one point.

Azure Event Hub

Azure Service Bus

Azure Data Factory

Azure Synapse Link

Requirement

Consume data in a data warehouse.

Consume data from an external source.

Azure component

- A. Mastered
- B. Not Mastered

Answer: A

Explanation:

Azure Event Hub

Azure Service Bus

Azure Data Factory

Azure Synapse Link

Requirement

Consume data in a data warehouse.

Consume data from an external source.

Azure component

Azure Data Factory

Azure Service Bus

NEW QUESTION 106

HOTSPOT - (Topic 4)

You are working with a customer to plan a go-live deployment to their production environment. The solution includes several apps and environment variables. The superuser team manages the production environment that is secured by using a specific environment Azure AD security group.

The following issues have been identified:

- The super user team cannot access make.powerapps.com to open and set the environment variables.
- Users are added to the environment Azure AD security group and are not able to access the model-driven app.
- Users are added to the environment Azure AD security group and are not able to access the canvas app.

You need to resolve the issues.

What should you do? To answer, select the appropriate options in the answer area. NOTE: Each correct selection is worth one point.

Issue

The superuser team cannot set the environment variables.

Users cannot access the model-driven app.

Users cannot access the canvas app.

Resolution

Assign the System Customizer role.

Assign the Basic User role.

Assign the Service Reader role.

Assign the Office Collaborator role.

Assign the Basic User role.

Assign the Service Reader role.

Assign the Office Collaborator role.

Add the Azure AD Security Group.

Add users to an Azure AD Security Group.

Assign the System Customizer role.

Assign the Service Reader role.

Add users to the superuser team.

Add users to an Azure AD Security Group.

- A. Mastered
- B. Not Mastered

Answer: A

Explanation:

Answer Area

Issue	Resolution
The superuser team cannot set the environment variables.	<input type="text" value="Assign the System Customizer role."/> <input type="text" value="Assign the System Customizer role."/> <input type="text" value="Assign the Basic User role."/> <input type="text" value="Assign the Service Reader role."/> <input type="text" value="Assign the Office Collaborator role."/>
Users cannot access the model-driven app.	<input type="text" value="Assign the Basic User role."/> <input type="text" value="Assign the Basic User role."/> <input type="text" value="Assign the Service Reader role."/> <input type="text" value="Assign the Office Collaborator role."/> <input type="text" value="Add the Azure AD Security Group."/>
Users cannot access the canvas app.	<input type="text" value="Add users to an Azure AD Security Group."/> <input type="text" value="Assign the System Customizer role."/> <input type="text" value="Assign the Service Reader role."/> <input type="text" value="Add users to the superuser team."/> <input type="text" value="Add users to an Azure AD Security Group."/>

NEW QUESTION 107

HOTSPOT - (Topic 4)

You are evaluating a solution design. You need to test the following scenarios: Mimic a user using an app.

- Obtain formal approval that an app meets customer-provided criteria.
- Confirmation that an app can manage expected peak loads.

Which test types should you use? To answer, select the appropriate options in the answer area.

NOTE: Each correct selection is worth one point.

Answer Area

Scenario	Test type
Mimic a user using an app.	<input type="text" value="Acceptance testing"/> <input type="text" value="UI testing"/> <input type="text" value="Acceptance testing"/> <input type="text" value="Performance testing"/> <input type="text" value="Load testing"/>
Obtain formal approval that an app meets customer-provided criteria.	<input type="text" value="Acceptance testing"/> <input type="text" value="Migration testing"/> <input type="text" value="Acceptance testing"/> <input type="text" value="Performance testing"/> <input type="text" value="UI testing"/>
Confirmation that an app can manage expected peak loads.	<input type="text" value="Performance testing"/> <input type="text" value="Unit testing"/> <input type="text" value="Acceptance testing"/> <input type="text" value="Performance testing"/> <input type="text" value="Integration testing"/>

Answer:

Answer Area

Scenario	Test type
Mimic a user using an app.	<input type="text" value="Acceptance testing"/> <input type="text" value="UI testing"/> <input type="text" value="Acceptance testing"/> <input type="text" value="Performance testing"/> <input type="text" value="Load testing"/>
Obtain formal approval that an app meets customer-provided criteria.	<input type="text" value="Acceptance testing"/> <input type="text" value="Migration testing"/> <input type="text" value="Acceptance testing"/> <input type="text" value="Performance testing"/> <input type="text" value="UI testing"/>
Confirmation that an app can manage expected peak loads.	<input type="text" value="Performance testing"/> <input type="text" value="Unit testing"/> <input type="text" value="Acceptance testing"/> <input type="text" value="Performance testing"/> <input type="text" value="Integration testing"/>

- A. Mastered
- B. Not Mastered

Answer: A

NEW QUESTION 110

- (Topic 4)

You are designing a Power Platform solution for a company.

Users must be granted access only to data that is relevant to them.

You need to recommend actions to meet the requirements.

Which two recommendations should you make? Each correct answer presents part of the solution.

NOTE: Each correct selection is worth one point.

- A. Add column security profiles to applicable teams.
- B. Define and configure security roles.

- C. Create teams and assign security roles and users to the teams.
- D. Create business units and assign security roles to the business units.

Answer: BD

Explanation:

To control data access, you must set up an organizational structure that both protects sensitive data and enables collaboration. You do this by setting up business units, security roles, and field security profiles.

Reference:

<https://docs.microsoft.com/en-us/power-platform/admin/security-roles-privileges>

NEW QUESTION 115

DRAG DROP - (Topic 4)

You are performing a requirements analysis for a customer. The customer provides the following requirements:

- ? Power Platform storage capacity must remain under 100 percent.
- ? Customer service representatives must be sent an email when they are assigned a case.
- ? Help desk technicians must be shown an error message when they try to delete a task row.
- ? The plug-in pass rate must remain over 99 percent for the production environment.

You need determine if the requirements are functional or non-functional.

Which requirement type should you use? To answer, drag the appropriate requirement types to the correct requirements. Each requirement type may be used once, more than once, or not at all. You may need to drag the split bar between panes or scroll to view content.

NOTE: Each correct selection is worth one point.

Requirement types	Requirement	Requirement type
	Power Platform storage capacity must remain under 100 percent.	<input type="text"/>
Functional	Customer Service representatives must be sent an email when they are assigned a case.	<input type="text"/>
Non-functional	Help desk technicians must be shown an error message when they try to delete a task row.	<input type="text"/>
	The plug-in pass rate must remain over 99 percent for the production environment.	<input type="text"/>

- A. Mastered
- B. Not Mastered

Answer: A

Explanation:

Box 1: Non-functional

Non-functional requirements commonly describe non-behavior aspects of the solution such as performance requirements.

Box 2: Functional

Functional requirements describe what the solution needs to do or its behaviors. Box 3: Functional

Box 4: Non-functional

Examples of common non-functional requirement types include:

- ? Availability
- ? Compliance/regulatory
- ? Data retention/residency
- ? Performance (response time, and so on)
- ? Privacy
- ? Recovery time
- ? Security
- ? Scalability

NEW QUESTION 116

- (Topic 4)

A company uses two separate unlinked apps to manage sales leads: a Power Apps app and a third-party application.

The client has the following requirements:

- ? Manage all leads by using the Power Apps app.
- ? Create a lead in the Power Apps app when a user creates a lead in the third-party application.
- ? Update leads in the Power Apps app when a user updates a lead in the third-party application.
- ? Connect to the third-party application by using an API.

You need to recommend strategies to integrate the Power Apps app and the third-party application.

Which three options can you use to achieve the goal? Each correct answer presents part of the solution.

NOTE: Each correct selection is worth one point.

- A. Dual-write
- B. Custom connector
- C. Dataflow
- D. Power Automate cloud flow
- E. DataService connector

Answer: ADE

Explanation:

A: Customers should be able to adopt business applications from Microsoft and expect they speak the same language and seamlessly work together. Dual Write allows our customers to not think about these apps as different systems to write to independently; rather, the underlying infrastructure makes it seamless for these apps to write simultaneously.

D: Use Custom APIs to create your own APIs in Dataverse. With a Custom API you can consolidate a group of operations into an API that you and other developers can call in their code. The Common Data Service (current environment) connector enables calling Custom APIs actions in Power Automate.

E: Common Data Service provides access to the environment database on the Microsoft Common Data Service. It is available for Logic Apps, Power Automate, and Power Apps. Reference:
<https://docs.microsoft.com/en-us/business-applications-release-notes/april19/cdm-data-integration/dual-writelink-common-data-service-apps>
<https://docs.microsoft.com/en-us/connectors/commondataservice/> <https://docs.microsoft.com/en-us/powerapps/developer/data-platform/custom-api>

NEW QUESTION 120

HOTSPOT - (Topic 4)

A company has an on-premises data warehouse and analytics solution- The data warehouse consists of multiple multi-dimensional data cubes representing over five years of operational data. The data warehouse consolidates and normalizes data that is sourced from 20 different systems.

The company plans to replace the existing solution with a Microsoft Power Platform solution that connects to the data warehouse. The company wants to provide analytical information to executives in a Microsoft Teams channel to support business planning.

The new solution must meet these requirements: Support the current data warehouse.

The solution must support drill-through capabilities into the data. You need to recommend a solution.

What should you recommend? To answer, select the appropriate options in the answer area. NOTE: Each correct selection is worth one point.

Answer Area

Requirement	Solution
Data storage and normalization.	<input type="checkbox"/> Data Gateway <input type="checkbox"/> Azure Data Lake <input type="checkbox"/> Dataverse for Teams <input type="checkbox"/> Azure Analysis Services
Visibility to key operational metrics from various Teams	<input type="checkbox"/> Power BI <input type="checkbox"/> AI Builder <input type="checkbox"/> Teams adaptive cards <input type="checkbox"/> Microsoft Teams integration object

Answer:

Answer Area

Requirement	Solution
Data storage and normalization.	<input checked="" type="checkbox"/> Data Gateway <input checked="" type="checkbox"/> Azure Data Lake <input type="checkbox"/> Dataverse for Teams <input type="checkbox"/> Azure Analysis Services
Visibility to key operational metrics from various Teams	<input type="checkbox"/> Power BI <input type="checkbox"/> AI Builder <input checked="" type="checkbox"/> Teams adaptive cards <input checked="" type="checkbox"/> Microsoft Teams integration object

- A. Mastered
- B. Not Mastered

Answer: A

Explanation:

Box 1: Azure Data Lake

A data warehouse is a centralized repository of integrated data from one or more disparate sources. Data warehouses store current and historical data and are used for reporting and analysis of the data.

NEW QUESTION 123

HOTSPOT - (Topic 4)

You are designing a Microsoft Power Platform solution for a company.

Which components should you recommend? To answer, select the appropriate options in the answer area.

NOTE: Each correct selection is worth one point.

Requirement

Component

Allow users to change the status of a record only if a custom column named Reason is populated.

	▼
Business rule	
Power Automate flow	
Asynchronous plug-in	
Background workflow	

Prompt users to update each opportunity product record when an opportunity is won or lost.

	▼
JavaScript code	
Real-time workflow	
Power Automate flow	
Asynchronous plug-in	

- A. Mastered
- B. Not Mastered

Answer: A

Explanation:

Box 1: Business rule

You can create business rules and recommendations to apply logic and validations without writing code or creating plug-ins. Business rules provide a simple interface to implement and maintain fast-changing and commonly used rules.

Box 2: Power Automate flow

Trigger the Power Automate flow with “When a record is updated”, then add a Condition in the flow and configure it with Status Label equals to Won.

NEW QUESTION 125

- (Topic 4)

A local bank uses Microsoft Power Platform apps to store customer data.

The bank IT director discovers that all employees can see the social security numbers of their customers. The IT team does not understand how field-level security works and needs help with the design.

You need to recommend a solution to the bank that meets the following requirements:

- The system must restrict access to customer social security numbers to the vice president of finance only.
- The vice president of finance must be able to read and update customer social security numbers.

Which two actions should you recommend? Each correct answer presents part of the solution.

NOT: Each correct selection is worth one point

- A. Set the values for the read permission and for the update permission for social security number to yet
- B. Enable field-level security for the member table.
- C. Create a held-level security profile.
- D. Enable field-level security for the social security number column.

Answer: CD

Explanation:

Field-level security is managed by the security profiles. To implement field-level security, a system administrator performs the following tasks.

? Enable field security on one or more fields for a given entity.

? Associate one more existing security profiles, or create one or more new security profiles to grant the appropriate access to specific users or teams.

Reference:

<https://docs.microsoft.com/en-us/power-platform/admin/field-level-security>

NEW QUESTION 129

- (Topic 4)

You are evaluating a solution design for a model-driven app that will have a large number of complex forms.

Many of the forms take up to 10 seconds to load.

You need to recommend solution to speed up loading times for the forms.

Which two solutions should you recommend? Each correct answer presents a complete solution.

NOTE: Each correct selection is worth one point.

- A. Consolidate and reduce scripts.
- B. Use synchronous JavaScript requests.
- C. Move scripts into the OnLoad event.
- D. Remove unnecessary fields.

Answer: AD

Explanation:

Controls that require extra data beyond the primary record produce the most strain on form responsiveness and loading speed. These controls fetch data over the network and often involve a waiting period (seen as progress indicators) because it can take time to transmit the data.

Keep only the most frequently used of these controls on the default tab.
Reference:
<https://docs.microsoft.com/en-us/powerapps/maker/model-driven-apps/design-performant-forms>

NEW QUESTION 133

DRAG DROP - (Topic 4)

You are designing a Microsoft Power Platform solution that will be deployed to two separate companies in the same Microsoft Office 365 tenant: Contoso, Ltd. and Contoso Pharmaceuticals.

The solution must meet the following security requirements:

- Restrict Contoso, Ltd. users from seeing the Contoso Pharmaceuticals company.
- Restrict access to specific forms.
- Restrict access to specific tables.

What should you recommend? To answer, drag the appropriate security types to the correct restrictions. Each security type may be used once, more than once, or not at all. You may need to drag the split bar between panes or scroll to view content.

NOTE: Each correct selection is worth one point.

Security objects

Security role

Team

Security group

User profile

Answer Area

Restriction

Restrict Contoso, Ltd. users from seeing the Contoso Pharmaceuticals company.

Restrict access to specific forms.

Restrict access to specific tables.

Security object

Answer:

Security objects

Security role

Team

Security group

User profile

Answer Area

Restriction

Restrict Contoso, Ltd. users from seeing the Contoso Pharmaceuticals company.

Restrict access to specific forms.

Restrict access to specific tables.

Security object

Team

Security group

Security role

- A. Mastered
B. Not Mastered

Answer: A

NEW QUESTION 136

HOTSPOT - (Topic 4)

You need to design a Power Platform solution that meets the following requirements:

? Capture data from a row during deletion to be used in an automated process.

? Use AI to process forms and automate data entry from paper-based forms.

Which requirements can be met by using out-of-the box Power Platform components?

Instructions: For each of the following statements, select Yes if the statement is true. Otherwise, select No.

NOTE: Each correct selection is worth one point.

	Yes	No
Capture data from a row during deletion to be used in an automated process.	<input type="radio"/>	<input type="radio"/>
Use AI to process forms and automate data entry from paper-based forms.	<input type="radio"/>	<input type="radio"/>

- A. Mastered
B. Not Mastered

Answer: A

Explanation:

Box 1: Yes

This can be done with Dataverse flows: The When a row is added, modified or deleted trigger runs a flow whenever a row of a selected table and scope changes or is created.

Box 2: Yes

AI Builder is a Microsoft Power Platform capability that provides AI models that are designed to optimize your business processes. AI Builder enables your business to use AI to automate processes and glean insights from your data in Power Apps and Power Automate.

NEW QUESTION 138

- (Topic 4)

Note: This question is part of a series of questions that present the same scenario. Each question in the series contains a unique solution that might meet the stated goals. Some question sets might have more than one correct solution, while others might not have a correct solution.

After you answer a question in this section, you will NOT be able to return to it. As a result, these questions will not appear in the review screen.

A company plans to automate the expense approval process.

Users currently enter data into an on-premises SQL Server database. You need to allow users to submit expenses from mobile devices.

Solution: Create a canvas app for expense data entry. Install an on-premises gateway. Create a cloud flow for approval and to add data to the SQL Server database.

Does the solution meet the goal?

- A. Yes
- B. No

Answer: A

NEW QUESTION 143

HOTSPOT - (Topic 4)

You are designing a Power Platform solution for a company that provides in-home appliance maintenance. When a customer schedules a service appointment, a dispatcher assigns one technician for a specific time and location.

The solution must capture information about the technician assigned to each appointment and the list of tools that the technician must bring to the appointment.

You need to recommend the data type for the captured information.

Which data type should you use? To answer, select the appropriate options in the answer area.

NOTE: Each correct selection is worth one point.

Requirement	Data type
Capture information about the technician assigned to each service appointment.	<div><div></div><div>▼</div><div>Choice</div><div>Choices</div><div>Customer</div><div>Lookup</div></div>
Select the tools that the technician must bring to an appointment.	<div><div></div><div>▼</div><div>Choices</div><div>Customer</div><div>Lookup</div><div>Text</div></div>

- A. Mastered
- B. Not Mastered

Answer: A

Explanation:

Box 1: Choice

Like Choices below, but can only select one of the option.

Box 2: Choices

You can customize forms (main, quick create, and quick view) and email templates by adding multi-select columns that are called Choices. When you add a choices column, you can specify multiple values that will be available for users to select. When users fill out the form they can select one, multiple, or all the values displayed in a drop-down list.

NEW QUESTION 147

- (Topic 4)

You are designing a Microsoft Power Platform solution.

You need to identify the non- functional requirements for the organization.

Which three non-functional requirements should you identify? Each correct answer presents a complete solution.

NOTE: Each correct selection is worth one point.

- A. usability of business process flows
- B. customer maintenance procedures
- C. business rules to identify top customers
- D. solution regulatory compliance
- E. time-to-load forms

Answer: BDE

Explanation:

Non-functional requirements capture the elements that users might not directly care about but are important to support the proposed architecture and operational viability of the solution. Non-functional requirements often influence user adoption and perceived satisfaction with the solution.

Examples of common non-functional requirement types include:

? Availability

? Compliance/regulatory

? Data retention/residency

? Performance (response time, and so on)

? Privacy

? Recovery time

? Security

? Scalability

Reference:

<https://docs.microsoft.com/en-us/learn/modules/work-with-requirements/4-non-functional-requirements>

NEW QUESTION 148

- (Topic 4)

You are designing a solution for a national vehicle repair company. You have the following requirements:

- Customers must search for vehicle issues by using natural language expressions.
 - Customers must contact a customer service agent as required. You need to recommend a solution.
- Which two features should you include? Each correct answer presents part of the solution.

- A. Power Virtual Agents
- B. Business process flow
- C. Power Apps portal
- D. Customer Insights

Answer: BC

NEW QUESTION 152

HOTSPOT - (Topic 4)

A company plans to create a Power Platform solution that integrates with Dynamics 365 Sales.

The solution must meet the following requirements:

? Connect directly with a Microsoft Azure SQL database as an external data source at run time where specific data is available in the Dynamics 365 Sales solution without the need for data replication.

? An external system needs to send data to the company's Dynamics 365 Sales solution.

You need to recommend the most suitable solution to integrate Dynamics 365 Sales with both systems.

What should you recommend? To answer, select the appropriate option in the answer area.

NOTE: Each correct selection is worth one point.

Integration requirement	Solutions
Have read-only visibility of data from an external Azure SQL database.	<div><div></div><div>Use virtual tables.</div><div>Use a custom plug-in.</div><div>Use Dynamics 365 Web API.</div><div>Use a web resource to display data.</div></div>
External system sends data to Dynamics 365 Sales.	<div><div></div><div>Use a custom plug-in.</div><div>Use Dynamics 365 Web API.</div><div>Use a web resource to display data.</div></div>

Answer:

Integration requirement	Solutions
Have read-only visibility of data from an external Azure SQL database.	<div><div></div><div>Use virtual tables.</div><div>Use a custom plug-in.</div><div>Use Dynamics 365 Web API.</div><div>Use a web resource to display data.</div></div>
External system sends data to Dynamics 365 Sales.	<div><div></div><div>Use a custom plug-in.</div><div>Use Dynamics 365 Web API.</div><div>Use a web resource to display data.</div></div>

- A. Mastered
- B. Not Mastered

Answer: A

Explanation:

Box 1: Use Virtual tables

A virtual entity is a custom entity in Dynamics 365 Customer Engagement (on-premises) that has fields containing data from an external data source. Virtual entities appear in your app to users as regular entity records, but contain data that is sourced from an external database, such as an Azure SQL Database. Records based on virtual entities are available in all clients including custom clients developed using the Dynamics 365 Customer Engagement Web Services.

Box 2: Use Dynamics 365 Web API.

Dynamics 365 Web Services API: Many times, straight database-to-database integrations aren't a possibility. In these cases, the development of a solution may depend on utilization of the Dynamics 365 Customer Engagement web services API (Application Programming Interface).

NEW QUESTION 157

HOTSPOT - (Topic 4)

A company is creating a Power Platform solution to manage employees.

The company has the following requirements:

? Allow only the human resource manager to change an employee's employment status when an employee is dismissed.

? Allow only approved device types to access the solution and company data.

You need to recommend a solution that meets the requirements.

What should you recommend? To answer, select the appropriate options in the answer area.

NOTE: Each correct selection is worth one point.

Requirement	Configuration
Allow only the human resource manager to change an employee's employment status when an employee is dismissed.	<div> <div>▼</div> <div>Team access</div> <div>Privacy preference</div> <div>Field security profile</div> <div>Hierarchy security profile</div> </div>
Allow only approved device types to access the solution and company data.	<div> <div>▼</div> <div>Endpoint security</div> <div>Compliance policy</div> <div>Conditional access</div> <div>Mobile threat integration</div> </div>

- A. Mastered
- B. Not Mastered

Answer: A

Explanation:

Box 1: Field security profile

Record-level permissions are granted at the entity level, but you may have certain fields associated with an entity that contain data that is more sensitive than the other fields. For these situations, you use field-level security to control access to specific fields.

Field-level security is available for the default fields on most out-of-box entities, custom fields, and custom fields on custom entities. Field-level security is managed by the security profiles.

Box 2: Compliance policy

Compliance policy settings – Tenant-wide settings that are like a built-in compliance policy that every device receives. Compliance policy settings set a baseline for how compliance policy works in your Intune environment, including whether devices that haven't received any device compliance policies are compliant or noncompliant.

Note: Mobile device management (MDM) solutions like Intune can help protect organizational data by requiring users and devices to meet some requirements. In Intune, this feature is called compliance policies.

Compliance policies in Intune:

Define the rules and settings that users and devices must meet to be compliant.

Include actions that apply to devices that are noncompliant. Actions for noncompliance can alert users to the conditions of noncompliance and safeguard data on noncompliant devices.

Can be combined with Conditional Access, which can then block users and devices that don't meet the rules.

NEW QUESTION 162

- (Topic 4)

You are a Microsoft Power Platform architect supporting the go-live phase of a canvas app. The canvas app accesses data on-premises and in the cloud.

Users are reporting the app is very slow to respond, especially upon initial launch. You need to optimize the performance of the app.

Which three actions should you complete? Each correct answer presents part of the solution.

NOTE: Each correct selection is worth one point.

- A. Move data calls from the OnStart event to the Onload event.
- B. Reduce data row limits.
- C. Increase data row limits.
- D. Move data calls from the Onload event to the OnStart event.
- E. Review the settings of the data gateway for on-premises data sources.

Answer: ABE

NEW QUESTION 163

DRAG DROP - (Topic 4)

A client plans to implement Microsoft Power Platform solutions.

The client identifies the following requirements for handling opportunities:

- Users must follow the same set of steps each time they process opportunities
- For opportunities with values greater than \$20,000, a follow-up date and second contact field must appear on the form.
- An error message must display if a follow-up date is not within seven days of the opportunity creation date.

You need to recommend tools to meet the client requirements.

What should you recommend? To answer, drag the appropriate tools to the correct requirement. Each tool may be used once, more than once, or not at all. You may need to drag the split bar between panes or scroll to view content.

NOTE: Each correct selection is worth one point.

Tools

Business Rule

Business process flow

Workflows

Answer Area

Requirement

Users must follow the same set of steps each time they process opportunities.

For opportunities with values greater than \$20,000, a follow-up date and second contact field must appear on the form.

An error message must display if a follow-up date is not within seven days of the opportunity creation date.

Tool

- A. Mastered
- B. Not Mastered

Answer: A

Explanation:

Tools

Business Rule

Business process flow

Workflows

Answer Area

Requirement

Users must follow the same set of steps each time they process opportunities.

For opportunities with values greater than \$20,000, a follow-up date and second contact field must appear on the form.

An error message must display if a follow-up date is not within seven days of the opportunity creation date.

Tool

Business process flow

Business Rule

Workflows

NEW QUESTION 165

HOTSPOT - (Topic 4)

A company plans to deploy multiple Microsoft Dataverse environments. You are supporting the go-live process.

The company reports the following access issues:

- Users can access account records but cannot read a column in the table.
A licensed user receives an insufficient permission error when opening leads.
 - A licensed user does not appear in the list of users available for security assignment. You need to resolve the issues.
- What should you do? To answer, select the appropriate options in the answer area NOTE: Each correct selection is worth one point.

Answer Area

Issue

Users can access account records but cannot read a column in the table.

A licensed user receives an insufficient permission error when opening leads.

A licensed user does not appear in the list of users available for security assignment.

Action

Security role

Security group

Field security profile

Security role

Security group

Field security profile

Security role

Security group

Field security profile

- A. Mastered
- B. Not Mastered

Answer: A

Explanation:

References:

https://docs.microsoft.com/en-us/powerapps/developer/data-platform/field-security-entities

NEW QUESTION 169

- (Topic 4)

A company uses a third-party cloud-based app to make real-time business decisions. The app has a RESTful API.

You must design a Microsoft Power Platform solution that interacts with the third-party app. Changes made in the Microsoft Power Platform solution must be reflected in the cloud app.

You need to recommend technologies to integrate the Microsoft Power Platform solution with the cloud app.

Which two technologies should you recommend? Each correct answer presents part of the solution.

NOTE: Each correct selection is worth one point.

- A. Scheduled Power Automate cloud flow with a custom connector to the cloud app
- B. Power Virtual Agents
- C. Custom plug-on registered with Microsoft Dataverse
- D. Model-driven app

Answer: AC

Explanation:

A: To enable Logic Apps, Power Automate, or Power Apps to communicate with the REST or SOAP API, use a custom connector, which is a wrapper around a REST API (Logic Apps also supports SOAP APIs).

C: Custom APIs are a powerful way to connect to any existing API, hosted anywhere, from PowerApps. You do not need a PowerApps Enterprise subscription to

register or use a Custom API.

Custom APIs are RESTful endpoints that you can connect to and use from PowerApps. All you'll need is a Swagger definition file for your endpoint.

Reference:

<https://docs.microsoft.com/en-us/power-platform/guidance/architecture/real-world-examples/custom-connector-canvas>

<https://powerapps.microsoft.com/hr-hr/blog/register-and-use-custom-apis-in-powerapps/>

NEW QUESTION 173

.....

THANKS FOR TRYING THE DEMO OF OUR PRODUCT

Visit Our Site to Purchase the Full Set of Actual PL-600 Exam Questions With Answers.

We Also Provide Practice Exam Software That Simulates Real Exam Environment And Has Many Self-Assessment Features. Order the PL-600 Product From:

<https://www.2passeasy.com/dumps/PL-600/>

Money Back Guarantee

PL-600 Practice Exam Features:

- * PL-600 Questions and Answers Updated Frequently
- * PL-600 Practice Questions Verified by Expert Senior Certified Staff
- * PL-600 Most Realistic Questions that Guarantee you a Pass on Your FirstTry
- * PL-600 Practice Test Questions in Multiple Choice Formats and Updatesfor 1 Year