

Exam Questions 200-901

Developing Applications and Automating Workflows using Cisco Core Platforms (DEVASC)

<https://www.2passeasy.com/dumps/200-901/>



NEW QUESTION 1

Refer to the exhibit.

```
curl -X GET [redacted] -H "Accept: application/json" \
-H "Authorization: Bearer AbCdEf123456" https://localhost/api/myresource
```

A process on the host wants to access the service running inside this Docker container. Which port is used to make a connection?

- A. only outbound connections between 3000 and 5000 are possible
- B. port 3000
- C. any port between 3000 and 5000
- D. port 5000

Answer: B

NEW QUESTION 2

Which two use cases are supported by Meraki APIs? (Choose two.)

- A. Retrieve live streams from a Meraki Camera.
- B. Build a custom Captive Portal for Mobile Apps.
- C. Configure network devices via the Dashboard API.
- D. Build location-aware apps from Wi-Fi and LoRaWAN devices.
- E. Deploy applications onto the devices.

Answer: BC

NEW QUESTION 3

Drag and drop the network component names from the left onto the correct descriptions on the right. Not all options are used.

```
#!/bin/bash
BACKUPTIME = `date +%b-%d-%y`
DESTINATION = /home/usr/path/backup-$BACKUPTIME.tar.gz
SOURCEFOLDER = /home/usr/path/data_folder
tar -cpzf $DESTINATION $SOURCEFOLDER
```

- A. Mastered
- B. Not Mastered

Answer: A

Explanation:

1 – A, 2 – B, 3 – D, 4 – C

NEW QUESTION 4

Drag and drop the network automation interfaces from the left onto the transport protocols that they support on the right.

SSH	gRPC
HTTP	NETCONF
HTTP/2	RESTCONF
HTTPS	

- A. Mastered
- B. Not Mastered

Answer: A

Explanation:

gRPC = C, NETCONF = A, RESTCONF = B, D

NEW QUESTION 5

Refer to the exhibit.

A. [{
 "books": {
 "science": {
 "biology": "10.00",
 "geology": "9.00",
 "chemistry": "8.00"
 },
 "math": {
 "calculus": "20.00",
 "algebra": "12.00"
 }
 },
 }]

B. {
 "books": [
 "science": {
 "biology": "10.00",
 "geology": "9.00",
 "chemistry": "8.00"
 },
 "math": {
 "calculus": "20.00",
 "algebra": "12.00"
 }
],
 }

Which python data structure does my_json contain?

- A. List
- B. Json
- C. Map
- D. Dict

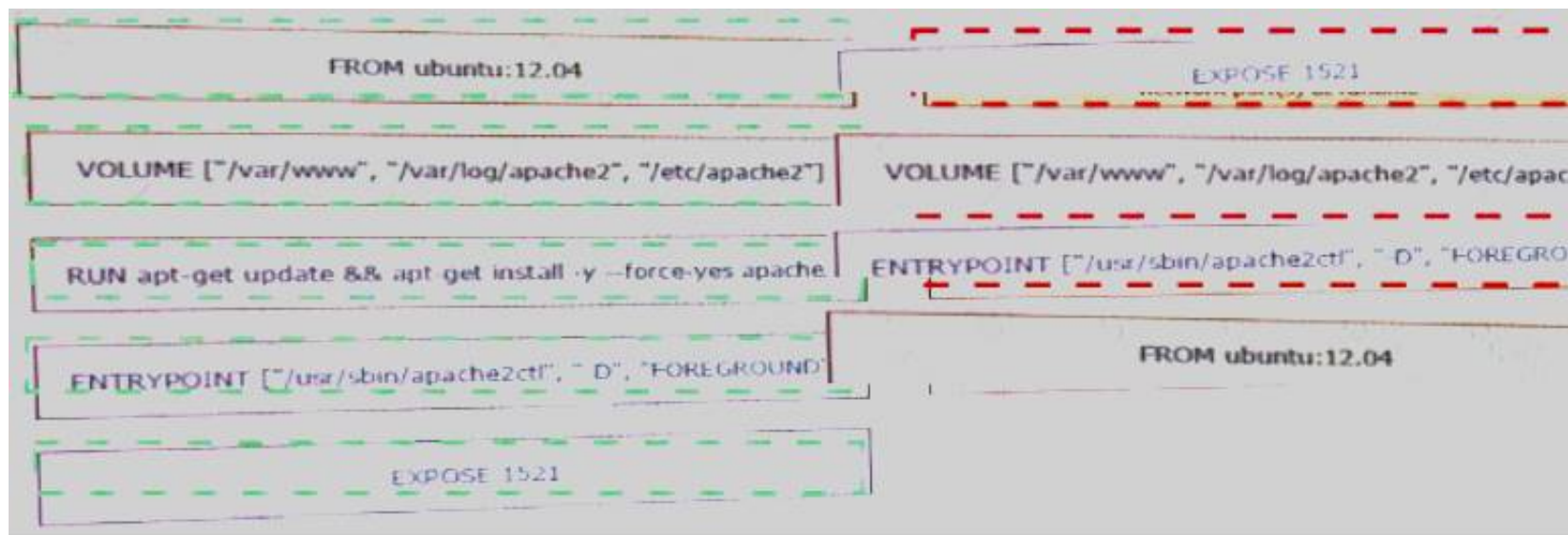
Answer: D

NEW QUESTION 6

Refer to the exhibit.

FROM ubuntu:12.04	informs Docker that the container listens on the specified network port(s) at runtime
VOLUME ["/var/www", "/var/log/apache2", "/etc/apache2"]	creates a mount point with the specified name
RUN apt-get update && apt-get install -y --force-yes apache2	configures a container that runs as an executable
ENTRYPOINT ["/usr/sbin/apache2ctl", "-D", "FOREGROUND"]	must be the first instruction in the Docker file
EXPOSE 1521	

Fill in the blank to complete the query parameter and value so that the result set is returned in reverse chronological order (most recent first) based on when message were entered.



- A. Mastered
- B. Not Mastered

Answer: A

Explanation:

?sortBy=lastactivity

```
<books>
  <science>
    <biology>10.00</biology>
    <geology>9.00</geology>
    <chemistry>8.00</chemistry>
  </science>
  <math>
    <calculus>20.00</calculus>
    <algebra>12.00</algebra>
  </math>
</books>
```

NEW QUESTION 7

Which CI/CD tool is an automation tool used to build, test, and deploy software?

- A. Nagios
- B. Gradle
- C. Jenkins
- D. Git

Answer: C

NEW QUESTION 8

Which status code is used by a REST API to indicate that the submitted payload is incorrect?

- A. A.-400B.403C.405D.429

Answer: A

NEW QUESTION 9

What is an example of a network interface hardware address?

- A. domain name
- B. IP address
- C. workstation name
- D. MAC address

Answer: D

NEW QUESTION 10

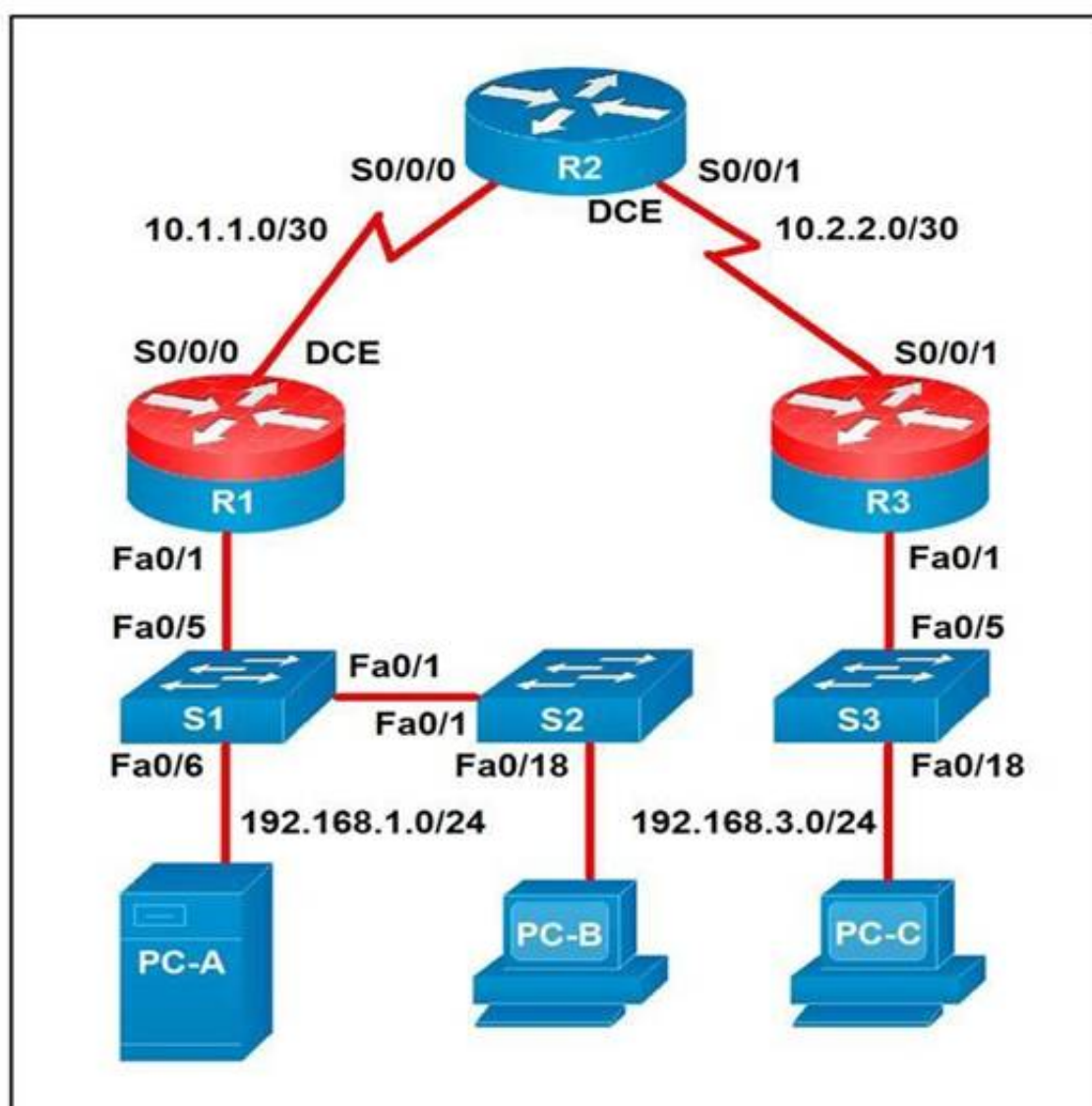
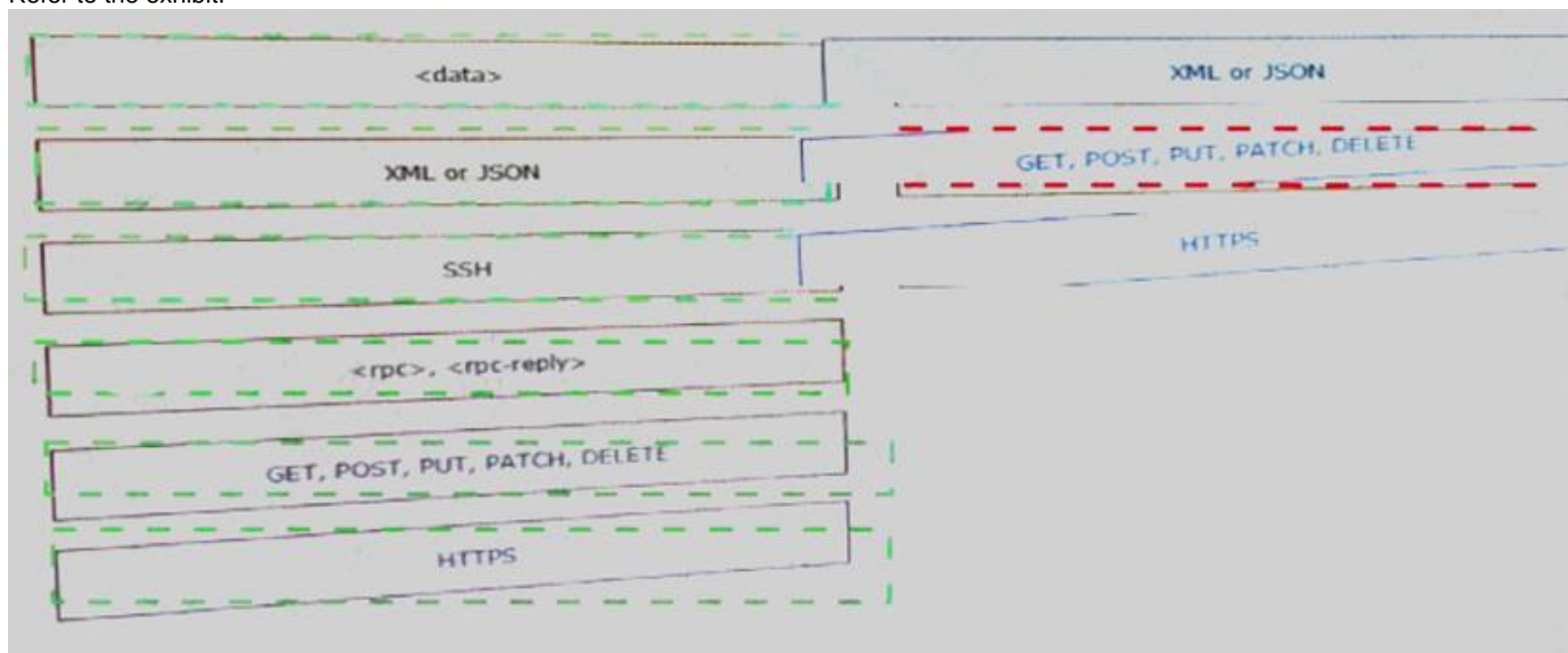
What are two characteristics of Bare Metal environments that are related to application deployment? (Choose two.)

- A. Provide the hypervisor to host virtual servers
- B. Specifically designed for container-based workloads.
- C. Provides workloads with access to hardware features
- D. Suitable for legacy application that do not support virtualization
- E. Not compatible with other cloud services such as PaaS or SaaS offerings.

Answer: CD

NEW QUESTION 10

Refer to the exhibit.



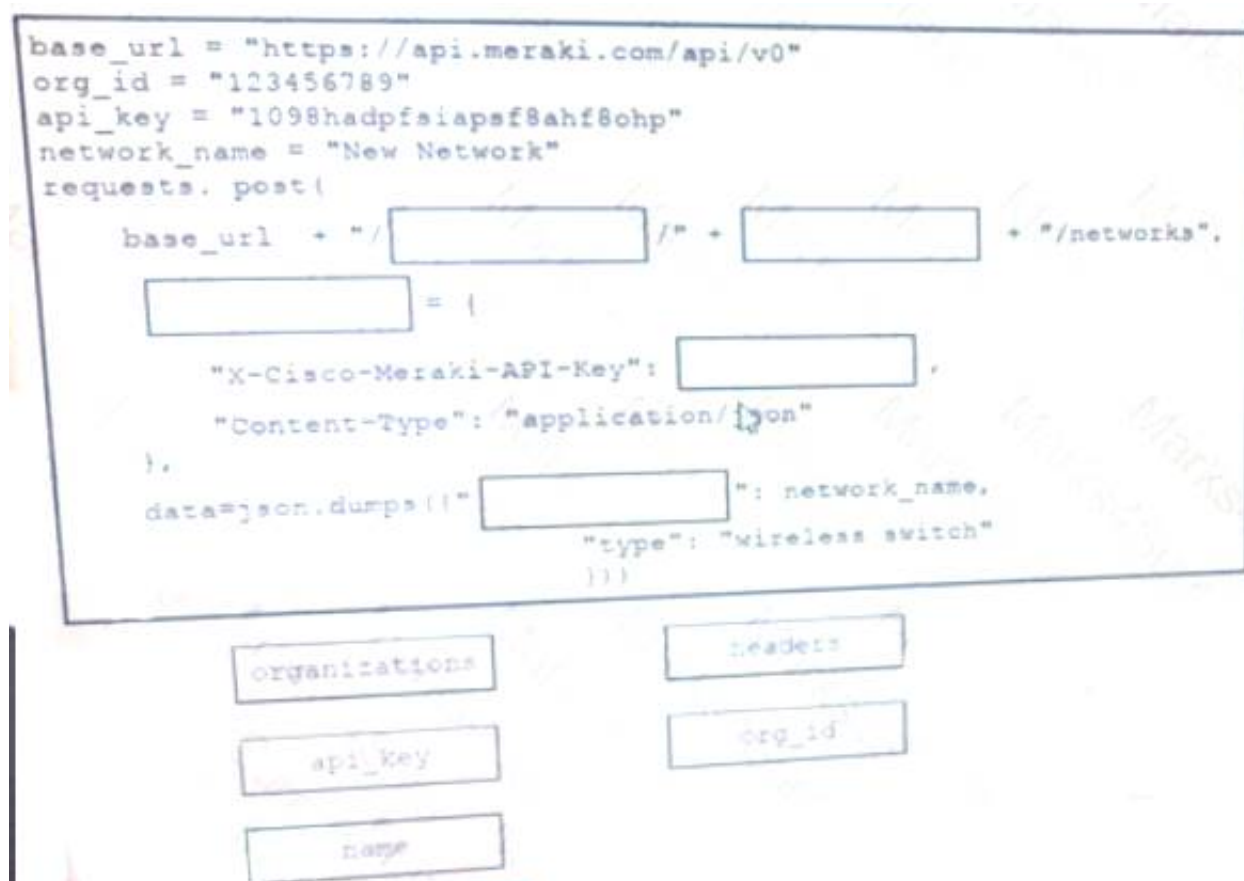
A developer is troubleshooting an API with the given API with the given API documentation and cURL command. What is the cause of this problem?

- A. The user is not allowed to post messages from their account
- B. The request body is missing or incomplete
- C. The API token specified is expired
- D. The authorization header is missing or incomplete

Answer: C

NEW QUESTION 15

Drag and drop the functionalities from the left onto correct networking devices on the right.



- A. Mastered
- B. Not Mastered

Answer: A

Explanation:

1 – D, 2 – C, 3 – A, 4 – B

NEW QUESTION 20

Refer to the exhibit.



Given the API documentation for the UCS SDK python class, UcsHandle, which code snippet creates a handle instance?

```
---
- hosts: switch2960cx
  gather_facts: no

  tasks:
    - ios_l2_interface:
      name: GigabitEthernet0/1
      state: unconfigured

    - ios_l2_interface:
      name: GigabitEthernet0/1
      mode: trunk
      native_vlan: 1
      trunk_allowed_vlans: 6-8
      state: present

    - ios_vlan:
      vlan_id: 6
      name: guest-vlan
      interfaces:
        - GigabitEthernet0/2
        - GigabitEthernet0/3

    - ios_vlan:
      vlan_id: 7
      name: corporate-vlan
      interfaces:
        - GigabitEthernet0/4

    - ios_vlan:
      vlan_id: 8
      name: iot-vlan
      interfaces:
        - GigabitEthernet0/5
```

- A. Option A
- B. Option B
- C. Option C
- D. Option D

Answer: B

NEW QUESTION 21

What is the purpose of a MAC address?

- A. To uniquely identify a router in a LAN
- B. To uniquely identify a network interface in a LAN
- C. To uniquely identify a device on the internet
- D. To uniquely identify a switch in a LAN

Answer: B

NEW QUESTION 26

Refer to the exhibit.

URL: https://<ASA_IP>/api/access/global/rules

Method: POST

Payload:

```

{
  "destinationAddress": {
    "kind": "IPv4Address",
    "value": "10.1.1.1"
  },
  "remarks": [ ],
  "active": true,
  "permit": true,
  "sourceAddress": {
    "kind": "IPv4Address",
    "value": "192.168.1.1"
  }
}

```

Response Status Code: 400 Bad Request

```

{"messages":[{"level":"Error","code":"JSON-PARSE-ERROR","details":"
Unexpected character ('\'' (code 34)):"

```

What is the function of the python script?

- A. Count and print the total number of available devices.
- B. Iterate over a list of network devices and write all device names and management IP addresses to an output file.
- C. Iterate over a list of network devices and write all device type and associated management IP address.
- D. For each device that is returned, display the device and, for each device, print the device name and management IP address.
- E. Loop through the returned list of network devices and, for each device, print the device name management IP address.

Answer: E

NEW QUESTION 27

Which principle is a value from the manifesto for Agile software development?

- A. adhering to a plan over responding to requirements
- B. detailed documentation over working software
- C. processes and tools over teams and inter actions
- D. customer collaboration over contract negotiation

Answer: D

NEW QUESTION 30

Drag and drop the element of the Finesse API on the left onto the description of its functionality on the right.


```
module ex-ethernet {
    namespace "http://example.com/Ethernet";
    prefix "eth";
    import ietf-interfaces {
        prefix if;
    }
    augment "/if:interfaces/if:interface" {
        when "if:type = 'ethernetCsmacd'";
        container ethernet {
            must "../if:location" {
                description
                    "An Ethernet interface must specify the physical location of the ethernet hardware.";
            }
            choice transmission-params {
                case auto {
                    leaf auto-negotiate {
                        type empty;
                    }
                }
                case manual {
                    leaf duplex {
                        type enumeration {
                            enum "half";
                            enum "full";
                        }
                    }
                    leaf speed {
                        type enumeration {
                            enum "10Mb";
                            enum "100Mb";
                            enum "1Gb";
                            enum "10Gb";
                        }
                    }
                }
            }
        }
    }
    // other ethernet specific params...
}
```

- A. Mastered
 B. Not Mastered

Answer: A

Explanation:

1 – D, 2 – F, 3 – A, 4 – E, 5 – B, 6 – G, 7 - C

NEW QUESTION 33

Drag and drop the descriptions from the left onto correct application deployment models on the right.

```
{
  "books": {
    "science": {
      "biology": "10.00",
      "geology": "9.00",
      "chemistry": "8.00"
    },
    "math": {
      "calculus": "20.00",
      "algebra": "12.00"
    }
  }
}
```

- A. Mastered
 B. Not Mastered

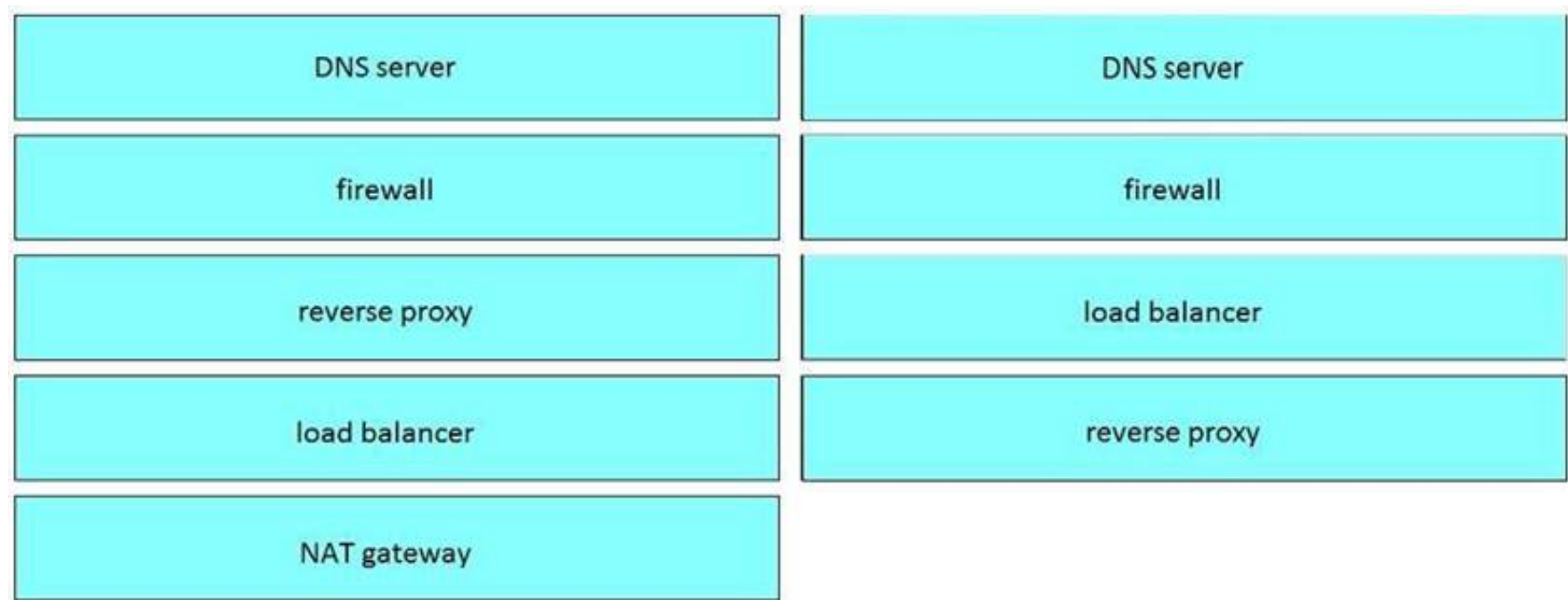
Answer: A

Explanation:

1 – B, 2 – E, 3 – C, 4 – D, 5 – A

NEW QUESTION 37

Refer to the exhibit.



Which two statements about the network diagram are true? (Choose two.)

- A. PC-A and PC-B are in the same subnet.
- B. One of the routers has two connected serial interfaces.
- C. The subnet of PC-C can contain 256 hosts.
- D. R1 and R3 are in the same subnet.
- E. The subnet address of PC-B has 18 bits dedicated to the network portion.

Answer: BC

NEW QUESTION 40

What are two advantages of the Model-view-controller software design pattern? (Choose two.)

- A. simplifies network automation
- B. allows for multiple views of the same model
- C. makes code easier to deploy using CI/CD pipelines
- D. reduces need for error handling
- E. separates responsibilities of the code, which makes future modifications easier

Answer: BE

NEW QUESTION 43

Drag and Drop the Bash commands from the left onto the correct actions on the right.



- A. Mastered
- B. Not Mastered

Answer: A

Explanation:

1 - d, 2 - i, 3 - e, 4 - a, 5 - j, 6 - b, 7 - g, 8 - h, 9 - c, 10 - f

NEW QUESTION 46

What is the Git command to delete a local branch named "experiment" without a warning?

- A. git branch -n experiment
- B. git branch -rm experiment
- C. git branch -f experiment
- D. git branch -D experiment

Answer: D

NEW QUESTION 49

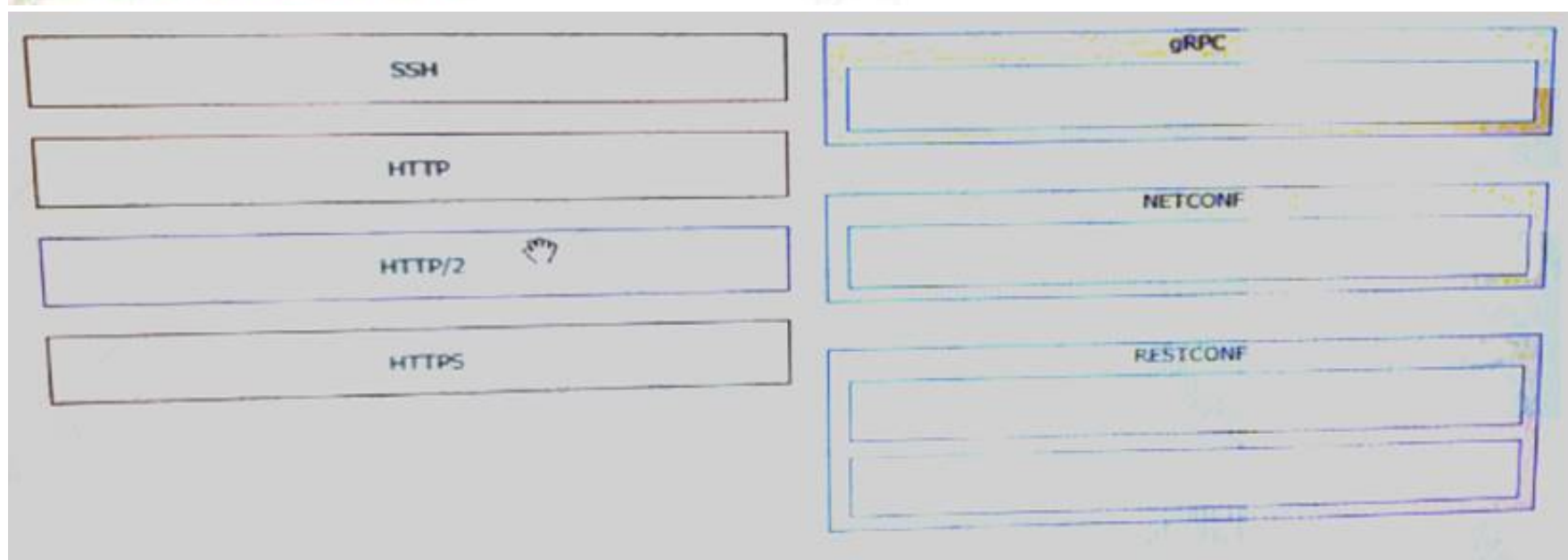
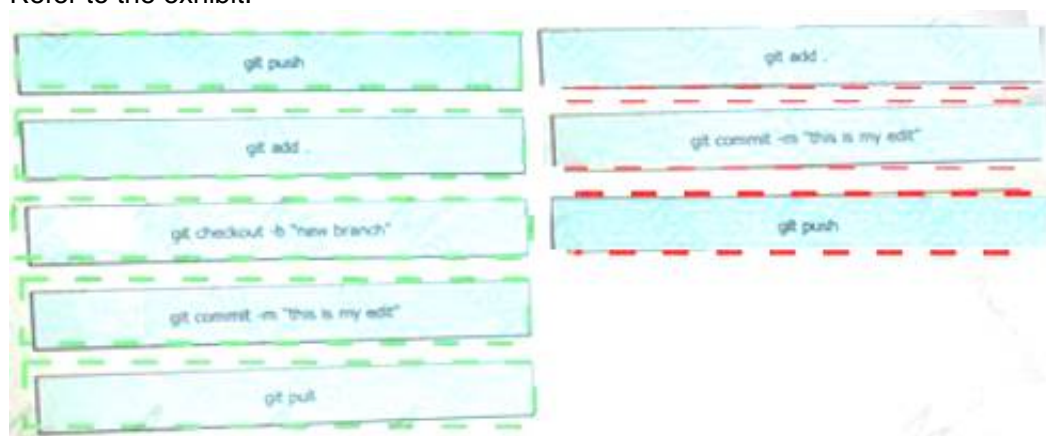
Which two elements are foundational principles of DevOps? (Choose two.)

- A. designing applications as microservices
- B. encouraging containers for the deployment of applications
- C. organizing cross-functional teams over organizational silos
- D. optimizing the cost of infrastructures
- E. automating over documenting

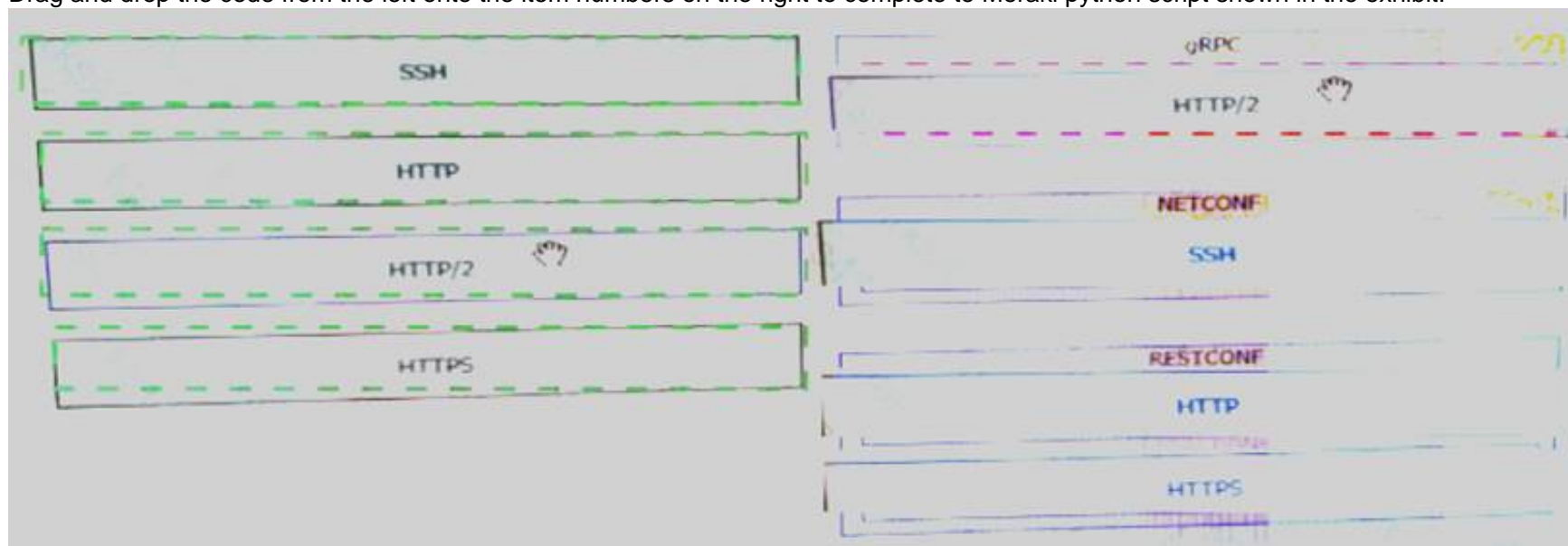
Answer: CE

NEW QUESTION 54

Refer to the exhibit.



Drag and drop the code from the left onto the item numbers on the right to complete the Meraki python script shown in the exhibit.



- A. Mastered
- B. Not Mastered

Answer: A

Explanation:

1 - D, 2 - A, 3 - H, 4 - F, 5 - G, 6 - E, 7 - C, 8 - B

NEW QUESTION 55

Refer to the exhibit.

List the clients that have used this network in the timespan

HTTP REQUEST

GET /networks/ {networkId}/clients

PARAMETERS

t0

The beginning of the timespan for the data. The maximum lookback period is 31 days from today.

timespan

The timespan for which the information will be fetched. If specifying timespan, do not specify parameter t0. The value must be in seconds and be less than or equal to 31 days. The default is 1 day.

perPage

The number of entries per page returned. Acceptable range is 3 – 1000. Default is 10.

startingAfter

A token used by the server to indicate the start of the page. Often this is a timestamp or an ID but it is not limited to those. This parameter should not be defined by client applications. The link for the first, last, prev, or next page in the HTTP Link header should define it.

endingBefore

A token used by the server to indicate the end of the page. Often this is a timestamp or an ID but it is not limited to those. This parameter should not be defined by client applications. The link for the first, last, prev, or next page in the HTTP Link header should define it.

The output of a unified diff when comparing two versions of a python script is shown. Which two “single_ request _ timeout ()”

```

base_url = https://api.meraki.com/api/v0"
network_id = "L_12345678910"
api_key = "1098hadpfsiapsf8ahf8ohp"
requests.<item 1> (
    <item 2> + "/<item 3>/" + /<item 4>, "/<item 5>",
    headers = {
        "X-Cisco-Meraki-API-Key": "<item 6>",
        "Content-Type": "<item 7>"
    },
    <item 8>={"<item 9>":"/<item 10>})

```

- A. Option A
- B. Option B
- C. Option C
- D. Option D

Answer: BC

NEW QUESTION 57

Package updates from a local server fail to download. However, the same updates work when a much slower external repository is used. Way are local updates failing?

- A. The update utility is trying to use a proxy to access the internal resource.
- B. The Internet connection is too slow.
- C. The Internet is down at the moment, which causes the local server to not be able to respond.
- D. The server is running out of disk space.

Answer: A

NEW QUESTION 58

.....

THANKS FOR TRYING THE DEMO OF OUR PRODUCT

Visit Our Site to Purchase the Full Set of Actual 200-901 Exam Questions With Answers.

We Also Provide Practice Exam Software That Simulates Real Exam Environment And Has Many Self-Assessment Features. Order the 200-901 Product From:

<https://www.2passeasy.com/dumps/200-901/>

Money Back Guarantee

200-901 Practice Exam Features:

- * 200-901 Questions and Answers Updated Frequently
- * 200-901 Practice Questions Verified by Expert Senior Certified Staff
- * 200-901 Most Realistic Questions that Guarantee you a Pass on Your FirstTry
- * 200-901 Practice Test Questions in Multiple Choice Formats and Updatesfor 1 Year