

## Exam Questions CAPM

Certified Associate in Project Management (PMI-100)

<https://www.2passeasy.com/dumps/CAPM/>



#### NEW QUESTION 1

- (Exam Topic 3)

Change requests are an output from which Project Integration Management process?

- A. Direct and Manage Project Execution
- B. Develop Project Management Plan
- C. Close Project
- D. Develop Project Charter

**Answer:** A

#### NEW QUESTION 2

- (Exam Topic 3)

Which type of analysis would be used for the Plan Quality process?

- A. Schedule
- B. Checklist
- C. Assumption
- D. Cost-Benefit

**Answer:** D

#### NEW QUESTION 3

- (Exam Topic 3)

Which of the following processes are part of the Project Integration Management Knowledge Area?

- A. Develop Project Management Plan, Collect Requirements, Create WBS
- B. Develop Project Management Plan, Control Scope, Develop Schedule
- C. Develop Project Charter, Define Scope, Estimate Costs
- D. Develop Project Charter, Direct and Manage Project Execution, Close Project or Phase

**Answer:** D

#### NEW QUESTION 4

- (Exam Topic 3)

An electronics firm authorizes a new project to develop a faster, cheaper, and smaller laptop after improvements in the industry and electronics technology. With which of the following strategic considerations is this project mainly concerned?

- A. Customer request
- B. Market demand
- C. Technological advance
- D. Strategic opportunity

**Answer:** C

#### NEW QUESTION 5

- (Exam Topic 3)

Project or phase closure guidelines or requirements, historical information, and the lessons learned knowledge base are examples of which input to the Close Project or Phase process?

- A. Organizational process assets
- B. A work breakdown structure
- C. The project management plan
- D. Enterprise environmental factors

**Answer:** A

#### NEW QUESTION 6

- (Exam Topic 3)

Which enterprise environmental factors are considered during Estimate Costs?

- A. Market conditions and published commercial information
- B. Company structure and market conditions
- C. Commercial information and company structure
- D. Existing human resources and market conditions

**Answer:** A

#### NEW QUESTION 7

- (Exam Topic 3)

Which type of managers do composite organizations involve?

- A. Functional managers and manager of project managers
- B. Functional managers only
- C. Project managers only

D. Technical managers and project managers

**Answer:** A

#### NEW QUESTION 8

- (Exam Topic 3)

Who selects the appropriate processes for a project?

- A. Project stakeholders
- B. Project sponsor and project stakeholder
- C. Project manager and project team
- D. Project manager and project sponsor

**Answer:** C

#### NEW QUESTION 9

- (Exam Topic 3)

Which estimating technique uses the actual costs of previous similar projects as a basis for estimating the costs of the current project?

- A. Analogous
- B. Parametric
- C. Bottom-up
- D. Top-down

**Answer:** A

#### NEW QUESTION 10

- (Exam Topic 3)

Which type of analysis systemically gathers and analyzes qualitative and quantitative information to determine which interests should be taken into account throughout the project?

- A. Product
- B. Cost-benefit
- C. Stakeholder
- D. Research

**Answer:** C

#### NEW QUESTION 10

- (Exam Topic 3)

A procurement management plan is a subsidiary of which other type of plan?

- A. Resource plan
- B. Project management plan
- C. Cost control plan
- D. Expected monetary value plan

**Answer:** B

#### NEW QUESTION 13

- (Exam Topic 3)

Which document includes the project scope, major deliverables, assumptions, and constraints?

- A. Project charter
- B. Project scope statement
- C. Scope management plan
- D. Project document updates

**Answer:** B

#### NEW QUESTION 16

- (Exam Topic 3)

An input of the Plan Procurement Management process is:

- A. Make-or-buy decisions.
- B. Activity cost estimates.
- C. Seller proposals.
- D. Procurement documents.

**Answer:** B

#### NEW QUESTION 19

- (Exam Topic 3)

Which is the Define Scope technique used to generate different approaches to execute and perform the work of the project?

- A. Build v
- B. buy
- C. Expert judgment
- D. Alternatives identification
- E. Product analysis

**Answer:** C

#### NEW QUESTION 22

- (Exam Topic 3)

Which technique is used in Perform Quantitative Risk Analysis?

- A. Sensitivity analysis
- B. Probability and impact matrix
- C. Risk data quality assessment
- D. Risk categorization

**Answer:** A

#### NEW QUESTION 25

- (Exam Topic 3)

Which tools or techniques will a project manager use for Develop Project Team?

- A. Negotiation
- B. Roles and responsibilities
- C. Recognition and rewards
- D. Prizing and promoting

**Answer:** C

#### NEW QUESTION 26

- (Exam Topic 3)

The product scope description is used to:

- A. Gain stakeholders' support for the project.
- B. Progressively elaborate the characteristics of the product, service, or result.
- C. Describe the project in great detail.
- D. Define the process and criteria for accepting a completed product, service, or result.

**Answer:** B

#### NEW QUESTION 28

- (Exam Topic 3)

What is an objective of the Develop Project Team process?

- A. Feelings of trust and improved cohesiveness
- B. Ground rules for interaction
- C. Enhanced resource availability
- D. Functional managers becoming more involved

**Answer:** A

#### NEW QUESTION 29

- (Exam Topic 3)

Work performance information and cost forecasts are outputs of which Project Cost Management process?

- A. Estimate Costs
- B. Plan Cost Management
- C. Determine Budget
- D. Control Costs

**Answer:** D

#### NEW QUESTION 33

- (Exam Topic 3)

Cost baseline is an output of which of the following processes?

- A. Control Costs
- B. Determine Budget
- C. Estimate Costs
- D. Estimate Activity Resources

**Answer:** B

#### NEW QUESTION 34

- (Exam Topic 3)

What is a hierarchically organized depiction of the identified project risks arranged by risk category?

- A. Risk register
- B. Risk breakdown structure (RBS)
- C. Risk management plan
- D. Risk category

**Answer:** B

#### NEW QUESTION 37

- (Exam Topic 3)

Which organizational process assets update is performed during the Close Procurements process?

- A. Procurement audit
- B. Lessons learned
- C. Performance reporting
- D. Payment requests

**Answer:** B

#### NEW QUESTION 41

- (Exam Topic 3)

Which type of manager is assigned by the performing organization to lead the team that is responsible for achieving the project objectives?

- A. Program
- B. Functional
- C. Project
- D. Portfolio

**Answer:** C

#### NEW QUESTION 46

- (Exam Topic 3)

A collection of projects managed as a group to achieve strategic objectives is referred to as a:

- A. plan
- B. process
- C. program
- D. portfolio

**Answer:** D

#### NEW QUESTION 49

- (Exam Topic 3)

Taking out insurance in relation to risk management is called what?

- A. Transference
- B. Avoidance
- C. Exploring
- D. Mitigation

**Answer:** A

#### NEW QUESTION 52

- (Exam Topic 3)

The most commonly used type of precedence relationship in the precedence diagramming method (PDM) is:

- A. start-to-start (SS)
- B. start-to-finish (SF)
- C. finish-to-start (FS)
- D. finish-to-finish (FF)

**Answer:** C

#### NEW QUESTION 55

- (Exam Topic 3)

Which process involves aggregating the estimated costs of the individual schedule activities or work packages?

- A. Estimate Costs
- B. Estimate Activity Resources
- C. Control Costs
- D. Determine Budget

**Answer:** D

#### NEW QUESTION 57

- (Exam Topic 3)

Which process involves documenting the actions necessary to define, prepare, integrate, and coordinate all subsidiary plans?

- A. Collect Requirements
- B. Direct and Manage Project Execution
- C. Monitor and Control Project Work
- D. Develop Project Management Plan

**Answer:** D

#### NEW QUESTION 59

- (Exam Topic 3)

Which Develop Schedule tool and technique produces a theoretical early start date and late start date?

- A. Critical path method
- B. Variance analysis
- C. Schedule compression
- D. Schedule comparison bar charts

**Answer:** A

#### NEW QUESTION 63

- (Exam Topic 3)

Which illustrates the connection between work that needs to be done and its project team members?

- A. Work breakdown structure (WBS)
- B. Network diagrams
- C. Staffing management plan
- D. Responsibility assignment matrix (RAM)

**Answer:** D

#### NEW QUESTION 68

- (Exam Topic 3)

In an organization with a projectized organizational structure, who controls the project budget?

- A. Functional manager
- B. Project manager
- C. Program manager
- D. Project management office

**Answer:** B

#### NEW QUESTION 70

- (Exam Topic 3)

What type of project structure is a hierarchically organized depiction of the resources by type?

- A. Organizational breakdown structure (OBS)
- B. Resource breakdown structure (RBS)
- C. Work breakdown structure (WBS)
- D. Project breakdown structure (PBS)

**Answer:** B

#### NEW QUESTION 74

- (Exam Topic 3)

When would resource leveling be applied to a schedule model?

- A. Before constraints have been identified
- B. Before it has been analyzed by the critical path method
- C. After it has been analyzed by the critical path method
- D. After critical activities have been removed from the critical path

**Answer:** C

#### NEW QUESTION 79

- (Exam Topic 3)

What is the name of the statistical method that helps identify which factors may influence specific variables of a product or process under development or in production?

- A. Failure modes and effects analysis
- B. Design of experiments
- C. Quality checklist
- D. Risk analysis

**Answer:**

B

**NEW QUESTION 81**

- (Exam Topic 3)

To which process is work performance information an input?

- A. Administer Procurements
- B. Direct and Manage Project Execution
- C. Create WBS
- D. Perform Qualitative Risk Analysis

**Answer:** A

**NEW QUESTION 84**

- (Exam Topic 3)

What cost control technique is used to compare actual project performance to planned or expected performance?

- A. Cost aggregation
- B. Trend analysis
- C. Forecasting
- D. Variance analysis

**Answer:** D

**NEW QUESTION 86**

- (Exam Topic 3)

When is a project finished?

- A. After verbal acceptance of the customer or sponsor
- B. After lessons learned have been documented in contract closure
- C. When the project objectives have been met
- D. After resources have been released

**Answer:** C

**NEW QUESTION 87**

- (Exam Topic 3)

The formal and informal interaction with others in an organization industry, or professional environment is known as:

- A. negotiation
- B. organizational theory
- C. meeting
- D. networking

**Answer:** D

**NEW QUESTION 91**

- (Exam Topic 3)

What is the definition of Direct and Manage Project Execution?

- A. Integrating all planned activities
- B. Performing the activities included in the plan
- C. Developing and maintaining the plan
- D. Execution of deliverables

**Answer:** B

**NEW QUESTION 95**

- (Exam Topic 3)

The Verify Scope process is primarily concerned with:

- A. formalizing acceptance of the completed project deliverables.
- B. accuracy of the work deliverables.
- C. formalizing approval of the scope statement.
- D. accuracy of the work breakdown structure (WBS).

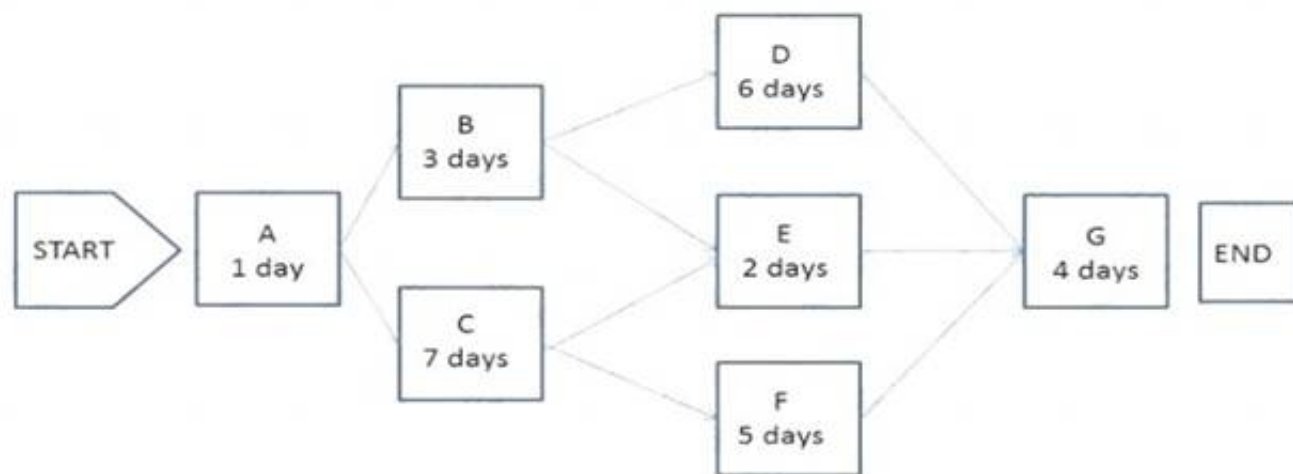
**Answer:** A

**NEW QUESTION 100**

- (Exam Topic 2)

The following is a network diagram for a project.





The total float for the project is how many days?

- A. 3
- B. 5
- C. 7
- D. 9

**Answer:** A

#### NEW QUESTION 102

- (Exam Topic 2)

At the completion of a project, a report is prepared that details the outcome of the research conducted on a global trend during the project. Which item did this project create?

- A. Result
- B. Product
- C. Service
- D. Improvement

**Answer:** A

#### NEW QUESTION 104

- (Exam Topic 2)

A disadvantage associated with virtual teams is that they:

- A. Require communication technology that is not readily available.
- B. Create difficulties when including people with disabilities.
- C. Often cannot accommodate teams that work different hours or shifts.
- D. Create the possibility for misunderstandings to arise.

**Answer:** D

#### NEW QUESTION 109

- (Exam Topic 2)

A full-time project manager with low to moderate authority and part-time administrative staff is working in an organizational structure with which type of matrix?

- A. Strong
- B. Weak
- C. Managed
- D. Balanced

**Answer:** D

#### NEW QUESTION 114

- (Exam Topic 2)

A project requires a component with well-understood specifications. Performance targets are established at the outset, and the final contract price is determined after completion of all work based on the seller's performance. The most appropriate agreement with the supplier is:

- A. Cost Plus Incentive Fee (CPIF).
- B. Fixed Price Incentive Fee (FPIF).
- C. Cost Plus Award Fee (CPAF).
- D. Fixed Price with Economic Price Adjustment (FP-EPA).

**Answer:** B

#### NEW QUESTION 117

- (Exam Topic 2)

During which process does the project team receive bids and proposals?

- A. Conduct Procurements
- B. Plan Procurements
- C. Estimate Costs
- D. Control Budget



Answer: A

#### NEW QUESTION 120

- (Exam Topic 2)

Which action is included in the Control Costs process?

- A. Identify how the project costs will be planned, structured, and controlled
- B. Determine policies, objectives, and responsibilities to satisfy stakeholder needs
- C. Develop an approximation of the monetary resources needed to complete project activities
- D. Monitor cost performance to isolate and understand variances from the approved cost baseline

Answer: D

#### NEW QUESTION 125

- (Exam Topic 2)

In project management, a temporary project can be:

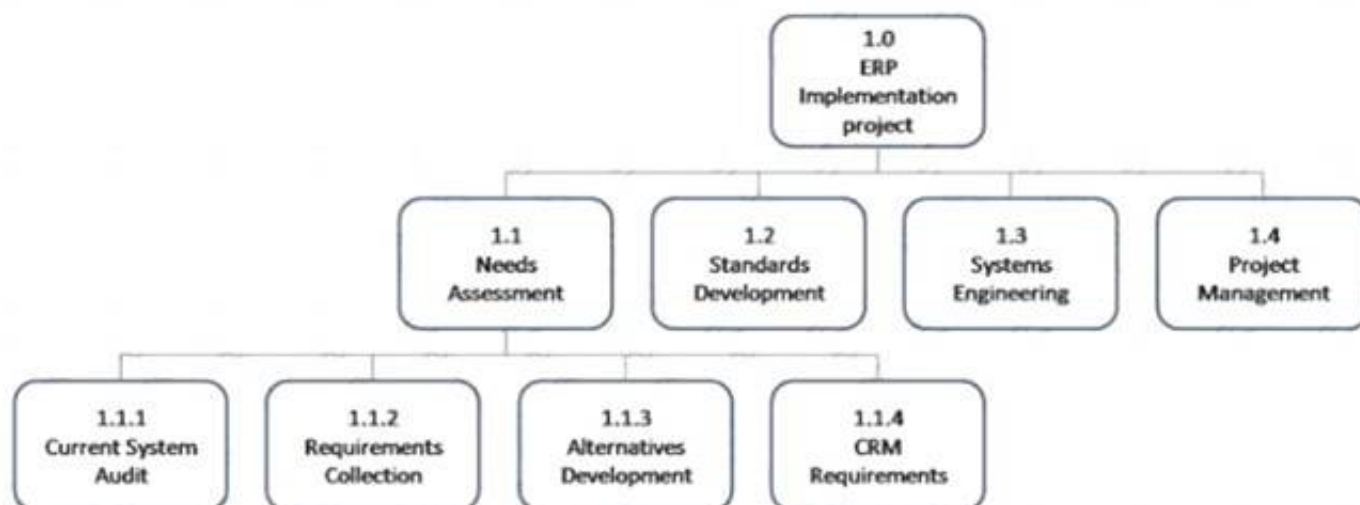
- A. Completed without planning
- B. A routine business process
- C. Long in duration
- D. Ongoing to produce goods

Answer: C

#### NEW QUESTION 129

- (Exam Topic 2)

Which type of graphic is displayed below?



- A. Work breakdown structure
- B. Context diagram
- C. Control chart
- D. Pareto diagram

Answer: A

#### NEW QUESTION 132

- (Exam Topic 2)

Variance and trend analysis is a tool and technique used in which process?

- A. Perform Qualitative Risk Analysis
- B. Perform Quantitative Risk Analysis
- C. Control Risks
- D. Plan Risk Responses

Answer: C

#### NEW QUESTION 136

- (Exam Topic 2)

Activity cost estimates and the project schedule are inputs to which Project Cost Management process?

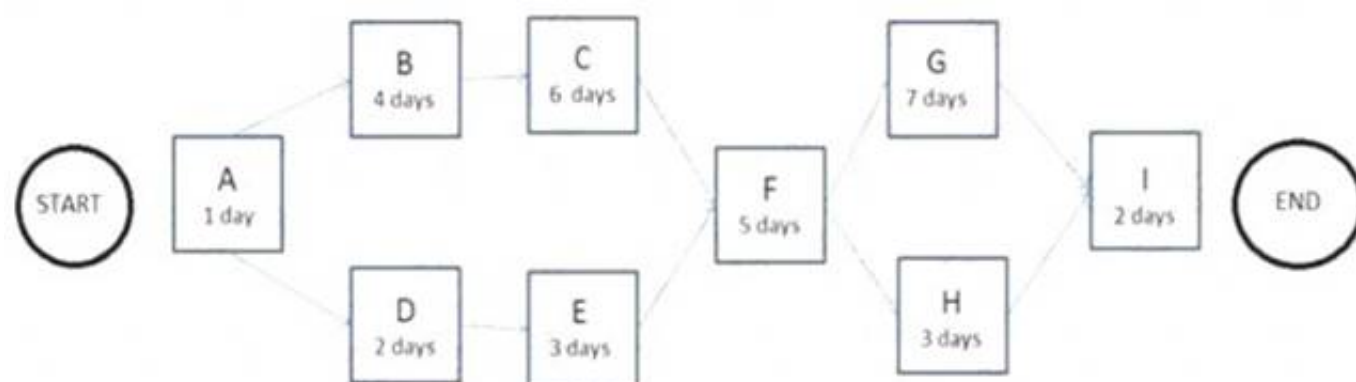
- A. Estimate Costs
- B. Control Costs
- C. Plan Cost Management
- D. Determine Budget

Answer: D

#### NEW QUESTION 141

- (Exam Topic 2)

The following is a network diagram for a project.



The total float for the project is how many days?

- A. 5
- B. 9
- C. 12
- D. 14

**Answer: B**

#### NEW QUESTION 144

- (Exam Topic 2)

Whose approval may be required for change requests after change control board (CCB) approval?

- A. Functional managers
- B. Business partners
- C. Customers or sponsors
- D. Subject matter experts

**Answer: C**

#### NEW QUESTION 146

- (Exam Topic 2)

Every project creates a unique product, service, or result that may be:

- A. tangible
- B. targeted
- C. organized
- D. variable

**Answer: A**

#### NEW QUESTION 149

- (Exam Topic 2)

Completion of the product scope is measured against the product:

- A. prototypes
- B. requirements
- C. analyses
- D. benchmarks

**Answer: B**

#### NEW QUESTION 152

- (Exam Topic 2)

Stakeholder communication requirements should be included as a component of:

- A. enterprise environmental factors
- B. organizational process assets
- C. the project management plan
- D. the stakeholder register

**Answer: C**

#### NEW QUESTION 156

- (Exam Topic 2)

At the start of a typical project life cycle, costs are:

- A. low, peak as work is carried out, and drop as the project nears the end.
- B. low, become steady as work is carried out, and increase as the project nears the end.
- C. high, drop as work is carried out, and increase as the project nears the end.
- D. high, become low as work is carried out, and drop as the project nears the end.

**Answer: A**

#### NEW QUESTION 159

- (Exam Topic 2)

The methodology that combines scope, schedule, and resource measurements to assess project performance and progress is known as:

- A. Earned value management.
- B. Forecasting.
- C. Critical chain methodology.
- D. Critical path methodology.

**Answer: A**

#### NEW QUESTION 164

- (Exam Topic 2)

For a stakeholder with low interest and high power, the project manager should:

- A. Monitor the stakeholder.
- B. Manage the stakeholder closely.
- C. Keep the stakeholder satisfied.
- D. Keep the stakeholder informed.

**Answer: C**

#### NEW QUESTION 165

- (Exam Topic 2)

Those who enter into a contractual agreement to provide services necessary for a project are:

- A. buyers
- B. sellers
- C. business partners
- D. product users

**Answer: B**

#### NEW QUESTION 169

- (Exam Topic 2)

The scope management plan and scope baseline are contained in:

- A. organizational process assets
- B. a requirements traceability matrix
- C. the project charter
- D. the project management plan

**Answer: D**

#### NEW QUESTION 174

- (Exam Topic 2)

Which process involves determining, documenting, and managing stakeholders' needs and requirements to meet project objectives?

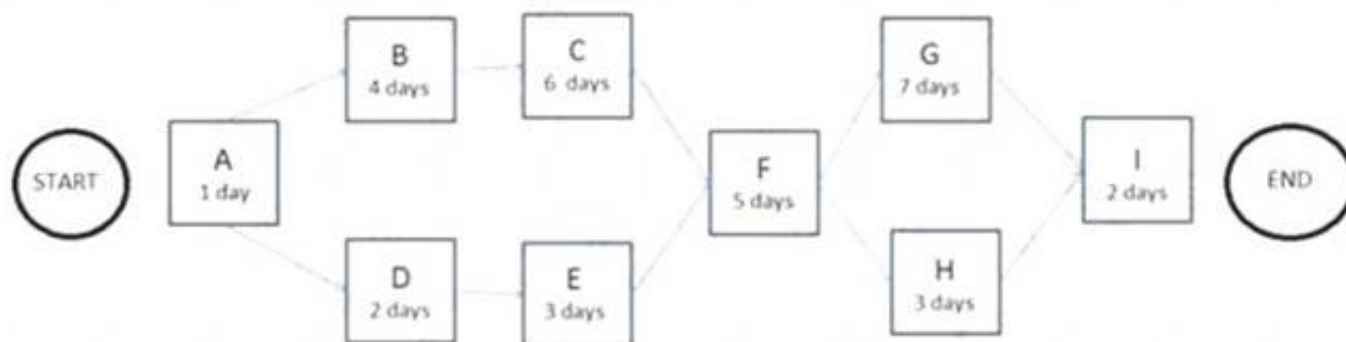
- A. Collect Requirements
- B. Plan Scope Management
- C. Define Scope
- D. Define Activities

**Answer: A**

#### NEW QUESTION 175

- (Exam Topic 2)

The following is a network diagram for a project.



The free float for Activity E is how many days?

- A. 2
- B. 3
- C. 5
- D. 8

**Answer: C**

**NEW QUESTION 177**

- (Exam Topic 2)

The process of monitoring the status of the project and product scope as well as managing the changes to the scope baseline is known as:

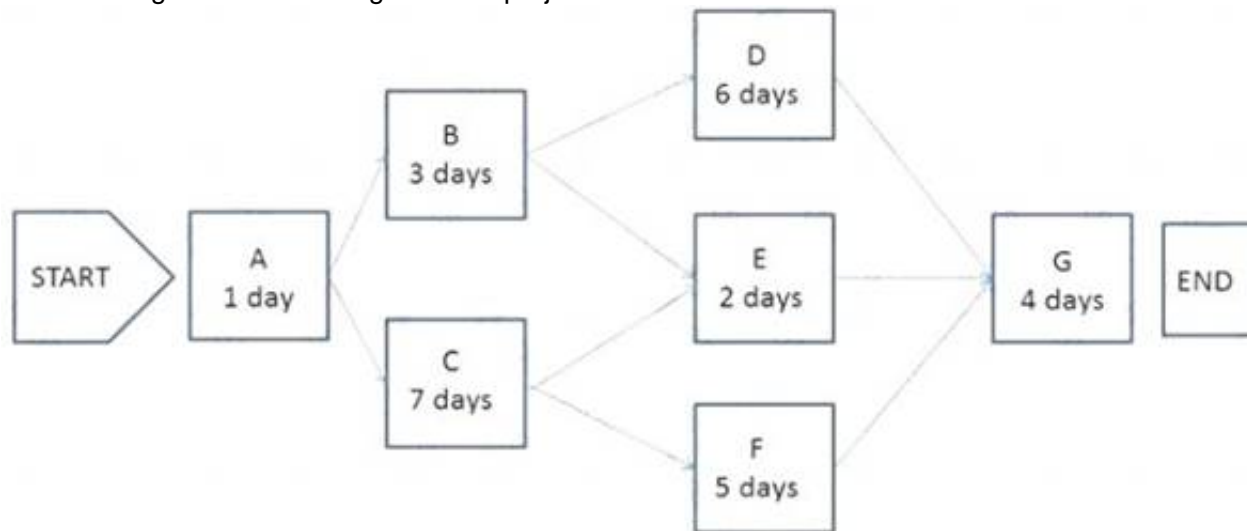
- A. Validate Scope.
- B. Plan Scope Management.
- C. Control Scope.
- D. Define Scope.

**Answer: C**

**NEW QUESTION 179**

- (Exam Topic 2)

The following is a network diagram for a project.



What is the critical path for the project?

- A. A-B-D-G
- B. A-B-E-G
- C. A-C-F-G
- D. A-C-E-G

**Answer: C**

**NEW QUESTION 184**

- (Exam Topic 2)

Stakeholders can be identified in later stages of the project because the Identify Stakeholders process should be:

- A. Continuous
- B. Discrete
- C. Regulated
- D. Arbitrary

**Answer: A**

**NEW QUESTION 185**

- (Exam Topic 2)

An input to the Perform Integrated Change Control process is:

- A. expert judgment
- B. seller proposals
- C. the project charter
- D. the project management plan

**Answer: D**

**NEW QUESTION 186**

- (Exam Topic 2)

The degree, amount, or volume of risk that an organization or individual will withstand is called risk:

- A. appetite
- B. tolerance
- C. threshold
- D. management

**Answer: B**

**NEW QUESTION 187**

- (Exam Topic 2)

In which phase of team building activities do team members begin to work together and adjust their work habits and behavior to support the team?

- A. Performing
- B. Storming

- C. Norming
- D. Forming

**Answer:** C

#### NEW QUESTION 189

- (Exam Topic 2)

Impacts to other organizational areas, levels of service, and acceptance criteria are typical components of which document?

- A. Business case
- B. Work breakdown structure
- C. Requirements documentation
- D. Risk register

**Answer:** C

#### NEW QUESTION 191

- (Exam Topic 2)

Project management processes ensure the:

- A. alignment with organizational strategy
- B. efficient means to achieve the project objectives
- C. performance of the project team
- D. effective flow of the project throughout its life cycle

**Answer:** D

#### NEW QUESTION 193

- (Exam Topic 2)

The cost baseline and project funding requirements are outputs of which process in Project Cost Management?

- A. Estimate Costs
- B. Control Costs
- C. Plan Cost Management
- D. Determine Budget

**Answer:** D

#### NEW QUESTION 194

- (Exam Topic 2)

Which schedule method allows the project team to place buffers on the project schedule path to account for limited resources and project uncertainties?

- A. Critical path method
- B. Critical chain method
- C. Resource leveling
- D. Schedule network analysis

**Answer:** B

#### NEW QUESTION 199

- (Exam Topic 2)

A tool and technique used in the Develop Project Charter process is:

- A. change control tools
- B. expert judgment
- C. meetings
- D. analytical techniques

**Answer:** B

#### NEW QUESTION 203

- (Exam Topic 2)

Project deliverables that have been completed and checked for correctness through the Control Quality process are known as:

- A. Verified deliverables.
- B. Validated deliverables.
- C. Acceptance criteria.
- D. Activity resource requirements.

**Answer:** A

#### NEW QUESTION 207

- (Exam Topic 2)

Which stakeholder approves a project's result?

- A. Customer
- B. Sponsor
- C. Seller
- D. Functional manager

**Answer:** A

#### NEW QUESTION 210

- (Exam Topic 2)

Which enterprise environmental factors may influence Plan Schedule Management?

- A. Cultural views regarding time schedules and professional and ethical behaviors
- B. Historical information and change control procedures
- C. Risk control procedures and the probability and impact matrix
- D. Resource availability and organizational culture and structure

**Answer:** D

#### NEW QUESTION 213

- (Exam Topic 2)

Which item is a cost of conformance?

- A. Training
- B. Liabilities
- C. Lost business
- D. Scrap

**Answer:** A

#### NEW QUESTION 217

- (Exam Topic 2)

Skills necessary for project management such as motivating to provide encouragement; listening actively; persuading a team to perform an action; and summarizing, recapping, and identifying next steps are known as:

- A. organizational skills
- B. technical skills
- C. communication skills
- D. hard skills

**Answer:** C

#### NEW QUESTION 218

- (Exam Topic 2)

Analytical techniques are a tool and technique of which process in Project Procurement Management?

- A. Plan Procurement Management
- B. Control Procurements
- C. Conduct Procurements
- D. Close Procurements

**Answer:** C

#### NEW QUESTION 220

- (Exam Topic 1)

Which item is an output of Plan Quality Management and an input to Perform Quality Assurance?

- A. Organizational process updates
- B. Quality metrics
- C. Change requests
- D. Quality control measurements

**Answer:** B

#### NEW QUESTION 225

- (Exam Topic 1)

Which tool or technique is used in the Perform Integrated Change Control process?

- A. Decomposition
- B. Modeling techniques
- C. Resource optimization
- D. Meetings

**Answer:** D

#### NEW QUESTION 228

- (Exam Topic 1)

Which conflict resolution technique searches for solutions that bring some degree of satisfaction to all parties in order to temporarily or partially resolve the conflict?

- A. Force/direct
- B. Withdraw/avoid
- C. Compromise/reconcile
- D. Collaborate/problem solve

**Answer:** C

#### NEW QUESTION 231

- (Exam Topic 1)

The process of identifying and documenting project roles, responsibilities, required skills, and reporting relationships and creating a staffing management plan is known as:

- A. Develop Project Team.
- B. Manage Project Team.
- C. Acquire Project Team.
- D. Plan Human Resource Management.

**Answer:** D

#### NEW QUESTION 233

- (Exam Topic 1)

What is the schedule performance index (SPI) if the planned value (PV) is \$100, the actual cost (AC) is \$150, and the earned value (EV) is \$50?

- A. 0.50
- B. 0.67
- C. 1.50
- D. 2.00

**Answer:** A

#### NEW QUESTION 237

- (Exam Topic 1)

What is the estimate at completion (EAC) if the budget at completion (BAC) is \$100, the actual cost (AC) is \$50, and the earned value (EV) is \$25?

- A. \$50
- B. \$100
- C. \$125
- D. \$175

**Answer:** C

#### NEW QUESTION 240

- (Exam Topic 1)

A key benefit of the Manage Communications process is that it enables:

- A. The best use of communication methods.
- B. An efficient and effective communication flow.
- C. Project costs to be reduced.
- D. The best use of communication technology.

**Answer:** B

#### NEW QUESTION 245

- (Exam Topic 1)

Units of measure, level of precision, level of accuracy, control thresholds, and rules of performance measurement are examples of items that are established in the:

- A. Cost management plan.
- B. Work performance information.
- C. Quality management plan.
- D. Work breakdown structure.

**Answer:** A

#### NEW QUESTION 248

- (Exam Topic 1)

Which input may influence quality assurance work and should be monitored within the context of a system for configuration management?

- A. Work performance data
- B. Project documents
- C. Scope baseline
- D. Requirements documentation



**Answer:** B

**NEW QUESTION 252**

- (Exam Topic 1)

Identify Risks is part of which Process Group?

- A. Planning
- B. Executing
- C. Closing
- D. Initiating

**Answer:** A

**NEW QUESTION 253**

- (Exam Topic 1)

The definition of when and how often the risk management processes will be performed throughout the project life cycle is included in which risk management plan component?

- A. Timing
- B. Methodology
- C. Risk categories
- D. Budgeting

**Answer:** A

**NEW QUESTION 254**

- (Exam Topic 1)

An effective technique for resolving conflict that incorporates multiple viewpoints from differing perspectives to achieve consensus and commitment is:

- A. smooth/accommodate.
- B. force/direct,
- C. collaborate/problem solve,
- D. compromise/reconcile.

**Answer:** C

**NEW QUESTION 256**

- (Exam Topic 1)

Which Define Activities output extends the description of the activity by identifying the multiple components associated with each activity?

- A. Project document updates
- B. Activity list
- C. Activity attributes
- D. Project calendars

**Answer:** C

**NEW QUESTION 261**

- (Exam Topic 1)

In a project, total float measures the:

- A. Ability to shuffle schedule activities to lessen the duration of the project.
- B. Amount of time an activity can be extended or delayed without altering the project finish date.
- C. Cost expended to restore order to the project schedule after crashing the schedule.
- D. Estimate of the total resources needed for the project after performing a forward pass.

**Answer:** B

**NEW QUESTION 262**

- (Exam Topic 1)

Which input to the Identify Stakeholders process provides information about internal or external parties related to the project?

- A. Procurement documents
- B. Communications plan
- C. Project charter
- D. Stakeholder register

**Answer:** C

**NEW QUESTION 264**

- (Exam Topic 1)

In the Plan Stakeholder Management process, expert judgment is used to:

- A. Provide information needed to plan appropriate ways to engage project stakeholders.
- B. Ensure comprehensive identification and listing of new stakeholders.

- C. Analyze the information needed to develop the project scope statement.
- D. Decide the level of engagement of the stakeholders at each required stage.

**Answer:** D

#### NEW QUESTION 266

- (Exam Topic 1)

Reserve analysis is a tool and technique used in which process?

- A. Plan Risk Management
- B. Plan Risk Responses
- C. Identify Risks
- D. Control Risks

**Answer:** D

#### NEW QUESTION 268

- (Exam Topic 1)

Which earned value management (EVM) metric is a measure of the cost efficiency of budgeted resources expressed as a ratio of earned value (EV) to actual cost (AC) and is considered a critical EVM metric?

- A. Cost variance (CV)
- B. Cost performance index (CPI)
- C. Budget at completion (BAC)
- D. Variance at completion (VAC)

**Answer:** B

#### NEW QUESTION 273

- (Exam Topic 1)

Which process identifies whether the needs of a project can best be met by acquiring products, services, or results outside of the organization?

- A. Plan Procurement Management
- B. Control Procurements
- C. Collect Requirements
- D. Plan Cost Management

**Answer:** A

#### NEW QUESTION 278

- (Exam Topic 1)

Lessons learned are created and project resources are released in which Process Group?

- A. Planning
- B. Executing
- C. Closing
- D. Initiating

**Answer:** C

#### NEW QUESTION 283

- (Exam Topic 1)

Change requests are processed for review and disposition according to which process?

- A. Control Quality
- B. Control Scope
- C. Monitor and Control Project Work
- D. Perform Integrated Change Control

**Answer:** D

#### NEW QUESTION 284

- (Exam Topic 1)

Enterprise environmental factors are an input to which process?

- A. Control Scope
- B. Define Scope
- C. Plan Scope Management
- D. Collect Requirements

**Answer:** C

#### NEW QUESTION 285

- (Exam Topic 1)

Which tool or technique is effective in a project in which the deliverable is not a service or result?

- A. Inspection
- B. Variance analysis
- C. Decomposition
- D. Product analysis

**Answer:** D

#### NEW QUESTION 290

- (Exam Topic 1)

Which type of dependency is legally or contractually required or inherent in the nature of work and often involves physical limitations?

- A. Mandatory
- B. Discretionary
- C. Internal
- D. External

**Answer:** A

#### NEW QUESTION 295

- (Exam Topic 1)

A regression line is used to estimate:

- A. Whether or not a process is stable or has predictable performance.
- B. How a change to the independent variable influences the value of the dependent variable.
- C. The upper and lower specification limits on a control chart.
- D. The central tendency, dispersion, and shape of a statistical distribution.

**Answer:** B

#### NEW QUESTION 296

- (Exam Topic 1)

Which input to the Plan Risk Management process provides information on high-level risks?

- A. Project charter
- B. Enterprise environmental factors
- C. Stakeholder register
- D. Organizational process assets

**Answer:** A

#### NEW QUESTION 300

- (Exam Topic 1)

The Plan Stakeholder Management process belongs to which Process Group?

- A. Executing
- B. Initiating
- C. Planning
- D. Monitoring and Controlling

**Answer:** C

#### NEW QUESTION 303

- (Exam Topic 1)

External organizations that have a special relationship with the enterprise and provide specialized expertise are called:

- A. Customers.
- B. Business partners.
- C. Sellers.
- D. Functional managers.

**Answer:** B

#### NEW QUESTION 308

- (Exam Topic 1)

An input to the Identify Stakeholders process is:

- A. The project management plan.
- B. The stakeholder register.
- C. Procurement documents.
- D. Stakeholder analysis.

**Answer:** C

#### NEW QUESTION 310

- (Exam Topic 1)

A project in which the scope, time, and cost of delivery are determined as early as possible is following a life cycle that is:

- A. Adaptive
- B. Predictive
- C. Incremental
- D. Iterative

**Answer:** B

#### NEW QUESTION 315

- (Exam Topic 1)

Configuration identification, configuration status accounting, and configuration verification and audit are all activities in which process?

- A. Perform Quality Assurance
- B. Direct and Manage Project Work
- C. Monitor and Control Project Work
- D. Perform Integrated Change Control

**Answer:** D

#### NEW QUESTION 320

- (Exam Topic 1)

An input to the Plan Procurement Management process is:

- A. Source selection criteria.
- B. Market research.
- C. A stakeholder register.
- D. A records management system.

**Answer:** C

#### NEW QUESTION 323

- (Exam Topic 1)

The process of identifying and documenting relationships among the project activities is known as:

- A. Control Schedule.
- B. Sequence Activities.
- C. Define Activities.
- D. Develop Schedule.

**Answer:** B

#### NEW QUESTION 326

- (Exam Topic 1)

When does the project team determine which dependencies are discretionary?

- A. Before the Define Activities process
- B. During the Define Activities process
- C. Before the Sequence Activities process
- D. During the Sequence Activities process

**Answer:** D

#### NEW QUESTION 327

- (Exam Topic 1)

Which process involves subdividing project deliverables and project work into smaller, more manageable portions?

- A. Develop Schedule
- B. Create WBS
- C. Estimate Activity Resources
- D. Define Scope

**Answer:** B

#### NEW QUESTION 332

- (Exam Topic 1)

A project manager should document the escalation path for unresolved project risks in the:

- A. Change control plan
- B. Stakeholder register
- C. Risk log
- D. Communications management plan

**Answer:** D

#### NEW QUESTION 335

- (Exam Topic 1)

A method of obtaining early feedback on requirements by providing a working model of the expected product before actually building is known as:

- A. Benchmarking.
- B. Context diagrams.
- C. Brainstorming.
- D. Prototyping.

**Answer:** D

#### NEW QUESTION 337

- (Exam Topic 1)

A project manager providing information to the right audience, in the right format, at the right time is an example of which type of communication?

- A. Efficient
- B. Effective
- C. Push
- D. Pull

**Answer:** B

#### NEW QUESTION 339

- (Exam Topic 1)

A reward can only be effective if it is:

- A. Given immediately after the project is completed.
- B. Something that is tangible.
- C. Formally given during project performance appraisals.
- D. Satisfying a need valued by the individual.

**Answer:** D

#### NEW QUESTION 342

- (Exam Topic 6)

The features and functions that characterize a result, product, or service can refer to:

- A. project scope
- B. product scope
- C. service scope
- D. product breakdown structure

**Answer:** B

#### NEW QUESTION 345

- (Exam Topic 6)

Creating the project scope statement is part of which process?

- A. Manage Scope
- B. Collect Requirements
- C. Define Scope
- D. Validate Scope

**Answer:** C

#### NEW QUESTION 347

- (Exam Topic 6)

Why is tailoring in a project necessary?

- A. Requirements keep changing.
- B. An artifact must be produced.
- C. A tool or technique is required.
- D. Each project is unique.

**Answer:** D

#### Explanation:

Each project is unique, and the members of the project team should select the appropriate tools, techniques, inputs, and outputs from the PMBOK Guide.

#### NEW QUESTION 349

- (Exam Topic 6)

Which of the following are processes associated with Project Cost Management?

- A. Develop Cost
- B. Estimate Costs, Determine Budget
- C. Control Costs
- D. Develop Budget, Determine Budget, Determine Risks, Control Costs
- E. Plan Cost Management, Estimate Cost

- F. Determine Budge
- G. Control Costs
- H. Plan Budget Managemen
- I. Determine Budget, Create Cost Account
- J. Control Costs

**Answer:** C

#### NEW QUESTION 353

- (Exam Topic 6)

Which of the following documents ate created as part of Project Integration Management?

- A. Project charter and project management plan
- B. Communications management plan and scope management plan
- C. Quality management plan and risk management plan
- D. Project scope statement and communications management plan

**Answer:** A

#### NEW QUESTION 354

- (Exam Topic 6)

Which contract type is least desirable to a vendor?

- A. Fixed price with economic price adjustment (FPEPA)
- B. Firm fixed price (FFP)
- C. Cost plus fixed fee (CPFF>
- D. Cost plus award fee (CPAF>

**Answer:** B

#### NEW QUESTION 357

- (Exam Topic 6)

A project manager is reviewing the change requests for project documents, deliverables, and the project plan. In which project management process does this review belong?

- A. Monitor and Control Project Work
- B. Direct and Manage Project Work
- C. Close Project or Phase
- D. Perform Integrated Change Control

**Answer:** D

#### NEW QUESTION 362

- (Exam Topic 5)

Using the three-point estimating technique, if the most likely duration is four months, the optimistic duration is two months, and the pessimistic duration is one year, how many months is the expected activity duration?

- A. Two
- B. Four
- C. Five
- D. Twelve

**Answer:** C

#### NEW QUESTION 367

- (Exam Topic 5)

Which type of diagram includes groups of information and shows relationships between factors, causes, and objectives?

- A. Affinity
- B. Scatter
- C. Fishbone
- D. Matrix

**Answer:** D

#### NEW QUESTION 371

- (Exam Topic 5)

Which Control Scope input is compared to actual results to determine if corrective action is required for the project?

- A. Scope baseline
- B. Scope management plan
- C. Change management plan
- D. Cost baseline

**Answer:** A

### NEW QUESTION 372

- (Exam Topic 5)

A project manager at a publishing company decides to initiate the editing phase of the project as soon as each chapter is written. Which type of Sequence Activities tool and technique is involved, considering that there was a start-to-start relationship with a 15-day delay?

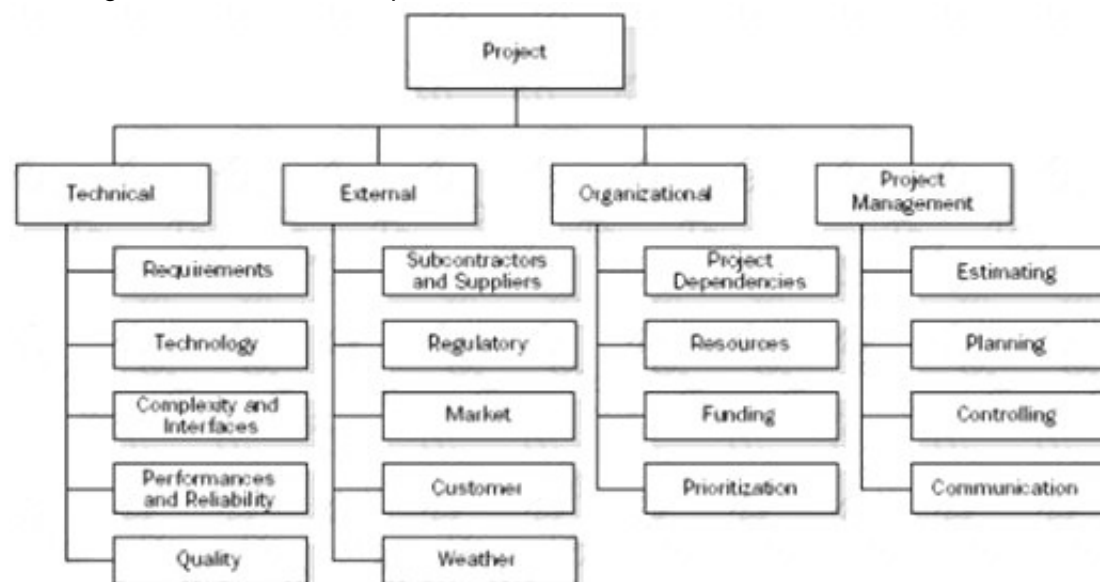
- A. Slack
- B. Float
- C. Lag
- D. Lead

**Answer: C**

### NEW QUESTION 375

- (Exam Topic 5)

The diagram below is an example of a:



- A. Risk breakdown structure (RBS).
- B. Project team.
- C. SWOT Analysis.
- D. Work breakdown structure (WBS).

**Answer: A**

### NEW QUESTION 377

- (Exam Topic 5)

The risk shared between the buyer and seller is determined by the:

- A. assumption log.
- B. quality checklist.
- C. risk register.
- D. contract type.

**Answer: D**

### NEW QUESTION 379

- (Exam Topic 5)

Plan-do-check-act is also known as:

- A. prevention over inspection.
- B. statistical sampling.
- C. management responsibility,
- D. continuous improvement.

**Answer: D**

### NEW QUESTION 381

- (Exam Topic 5)

The staffing management plan is part of the:

- A. organizational process assets.
- B. resource calendar.
- C. human resource plan.
- D. Develop Project Team process.

**Answer: C**

### NEW QUESTION 382

- (Exam Topic 5)

Which index is the calculated projection of cost performance that must be achieved on the remaining work to meet a specified management goal?



- A. Estimate at completion
- B. Cost performance
- C. Schedule performance
- D. To-complete performance

**Answer:** D

#### NEW QUESTION 383

- (Exam Topic 5)

When a permitting agency takes longer than planned to issue a permit, this can be described as a risk:

- A. event.
- B. response,
- C. perception.
- D. impact.

**Answer:** A

#### NEW QUESTION 387

- (Exam Topic 5)

The processes required to establish the scope of the project, refine the objectives, and define the course of action required to attain the objectives that the project has been undertaken to achieve are grouped within which Process Group?

- A. Initiating
- B. Planning
- C. Executing
- D. Monitoring and Controlling

**Answer:** B

#### NEW QUESTION 390

- (Exam Topic 5)

Under which type of contract does the seller receive reimbursement for all allowable costs for performing contract work, as well as a fixed-fee payment calculated as a percentage of the initial estimated project costs?

- A. Cost Plus Fixed Fee Contract (CPFF)
- B. Cost Plus Incentive Fee Contract (CPIF)
- C. Firm Fixed Price Contract (FFP)
- D. Fixed Price with Economic Price Adjustment Contract (FP-EPA)

**Answer:** A

#### NEW QUESTION 391

- (Exam Topic 5)

Projects are separated into phases or subprojects; these phases include:

- A. feasibility study, concept development, design, and prototype.
- B. initiate, plan, execute, and monitor.
- C. Develop Charter, Define Activities, Manage Stakeholder Expectations, and Report Performance.
- D. Identify Stakeholders, develop concept, build, and test.

**Answer:** A

#### NEW QUESTION 392

- (Exam Topic 5)

An input of the Create WBS process is:

- A. requirements documentation.
- B. scope baseline.
- C. project charter.
- D. validated deliverables.

**Answer:** A

#### NEW QUESTION 396

- (Exam Topic 5)

The item that provides more detailed descriptions of the components in the work breakdown structure (WB5) is called a WBS:

- A. dictionary.
- B. chart.
- C. report.
- D. register.

**Answer:** A

#### NEW QUESTION 398

- (Exam Topic 5)

The cost benefit analysis tool is used for creating:

- A. Pareto charts.
- B. quality metrics.
- C. change requests,
- D. Ishikawa diagrams.

**Answer:** B

#### NEW QUESTION 400

- (Exam Topic 5)

Which type of contract is a hybrid of both a cost-reimbursable and a fixed-price contract?

- A. Cost Plus Award Fee Contract (CPAF)
- B. Firm-Fixed -Price Contract (FFP)
- C. Time and Material Contract (T&M)
- D. Cost Plus Incentive Fee Contract (CPIF)

**Answer:** C

#### NEW QUESTION 402

- (Exam Topic 5)

The technique of subdividing project deliverables into smaller, more manageable components until the work and deliverables are defined to the work package level is called:

- A. a control chart.
- B. baseline.
- C. Create WBS.
- D. decomposition.

**Answer:** D

#### NEW QUESTION 405

- (Exam Topic 5)

After Define Activities and Sequence Activities, the next process is:

- A. Estimate Activity Resources.
- B. Estimate Activity Durations,
- C. Develop Schedule.
- D. Control Schedule.

**Answer:** A

#### NEW QUESTION 407

- (Exam Topic 5)

What is project management?

- A. A logical grouping of project management inputs, outputs, tools, and techniques
- B. Applying knowledge, skills, tools, and techniques to project activities to meet the project requirements
- C. Launching a process that can result in the authorization of a new project
- D. A formal, approved document that defines how the project is executed, monitored, and controlled

**Answer:** B

#### NEW QUESTION 408

- (Exam Topic 5)

Which of the following is a tool or technique used in the Acquire Project Team process?

- A. Networking
- B. Training
- C. Negotiation
- D. Issue log

**Answer:** C

#### NEW QUESTION 412

- (Exam Topic 5)

Which is one of the determining factors used to calculate CPI?

- A. EV
- B. SPI
- C. PV
- D. ETC

**Answer:** A

#### NEW QUESTION 415

- (Exam Topic 5)

Risk exists the moment that a project is:

- A. planned.
- B. conceived.
- C. chartered.
- D. executed.

**Answer:** B

#### NEW QUESTION 420

- (Exam Topic 5)

Which activity may occur at project or phase closure?

- A. Acceptance of deliverables
- B. Change requests
- C. Project management plan updates
- D. Benchmarking

**Answer:** A

#### NEW QUESTION 421

- (Exam Topic 5)

An input to the Collect Requirements process is the:

- A. stakeholder register.
- B. project management plan.
- C. project scope statement.
- D. requirements management plan.

**Answer:** A

#### NEW QUESTION 424

- (Exam Topic 5)

In which type of contract are the performance targets established at the onset and the final contract price determined after completion of all work based on the sellers performance?

- A. Firm-Fixed-Price (FFP)
- B. Fixed Price with Economic Price Adjustments (FP-EPA)
- C. Fixed-Price-Incentive-Fee (FPIF)
- D. Cost Plus Fixed Fee (CPFF)

**Answer:** C

#### NEW QUESTION 429

- (Exam Topic 4)

Which of the following helps to ensure that each requirement adds business value by linking it to the business and project objectives?

- A. Requirements traceability matrix
- B. Work breakdown structure (WBS) dictionary
- C. Requirements management plan
- D. Requirements documentation

**Answer:** A

#### NEW QUESTION 430

- (Exam Topic 4)

What risk technique is used to quantify the probability and impact of risks on project objectives?

- A. Expert judgment
- B. Risk registry
- C. Risk response planning
- D. Interviewing

**Answer:** D

#### NEW QUESTION 433

- (Exam Topic 4)

Which activity involves ensuring that the composition of a projects configuration items is correct?

- A. Configuration Identification
- B. Configuration Status Accounting
- C. Configuration Verification and Audit
- D. Configuration Quality Assurance

**Answer:**

C

**NEW QUESTION 435**

- (Exam Topic 4)

Which of the following is a set of interrelated actions and activities performed to achieve a prespecified product, result, or service?

- A. Portfolio
- B. Process
- C. Project
- D. Program

**Answer:** B

**NEW QUESTION 440**

- (Exam Topic 4)

Which of the following is an input to the Perform Qualitative Risk Analysis process?

- A. Risk register
- B. Risk data quality assessment
- C. Risk categorization
- D. Risk urgency

**Answer:** A

**NEW QUESTION 445**

- (Exam Topic 4)

What is the primary benefit of meeting quality requirements?

- A. Quality metrics
- B. Less rework
- C. Quality control measurements
- D. Benchmarking

**Answer:** B

**NEW QUESTION 448**

- (Exam Topic 4)

Which written document helps monitor who is responsible for resolving specific problems and concerns by a target date?

- A. Project Plan
- B. Responsibility Matrix
- C. Issue Log
- D. Scope Document

**Answer:** C

**NEW QUESTION 452**

- (Exam Topic 4)

Which standard has interrelationships to other project management disciplines such as program management and portfolio management?

- A. Program Management Body of Knowledge Guide
- B. The Standard for Program Management
- C. Organizational Project Management Maturity Model (OPM3\$)
- D. Guide to the Project Management Body of Knowledge (PMBOK®)

**Answer:** D

**NEW QUESTION 457**

- (Exam Topic 4)

Which is an input to the Verify Scope process?

- A. Performance report
- B. Work breakdown structure (WBS)
- C. Requested changes
- D. Project management plan

**Answer:** D

**NEW QUESTION 459**

- (Exam Topic 4)

In which Project Management Process Group is the project charter developed?

- A. Monitoring and Controlling
- B. Executing
- C. Initiating
- D. Planning

**Answer:** C

**NEW QUESTION 462**

- (Exam Topic 4)

Which of the following is an input to Control Scope?

- A. Project schedule
- B. Organizational process assets updates
- C. Project document updates
- D. Work performance information

**Answer:** D

**NEW QUESTION 466**

- (Exam Topic 4)

Which type of management focuses on ensuring that projects and programs are reviewed to prioritize resource allocation?

- A. Project
- B. Functional
- C. Program
- D. Portfolio

**Answer:** D

**NEW QUESTION 470**

- (Exam Topic 4)

The milestone list is an input to which process from the Planning Process Group?

- A. Define Activities
- B. Estimate Activity Durations
- C. Estimate Activity Resources
- D. Sequence Activities

**Answer:** D

**NEW QUESTION 471**

- (Exam Topic 4)

An input to the Perform Quantitative Risk Analysis process is the:

- A. quality management plan.
- B. project management plan.
- C. communications management plan.
- D. schedule management plan.

**Answer:** D

**NEW QUESTION 474**

- (Exam Topic 4)

A weighting system is a tool for which area of Conduct Procurements?

- A. Plan contracting
- B. Requesting seller responses
- C. Selecting seller's
- D. Planning purchase and acquisition

**Answer:** C

**NEW QUESTION 478**

- (Exam Topic 4)

Which of the following Project Communication Management processes uses performance reports as an input?

- A. Manage Stakeholder Expectations
- B. Report Performance
- C. Distribute Information
- D. Plan Communications

**Answer:** C

**NEW QUESTION 483**

- (Exam Topic 4)

Project contracts generally fall into which of the following three broad categories?

- A. Fixed-price, cost reimbursable, time and materials
- B. Make-or-buy, margin analysis, fixed-price
- C. Time and materials, fixed-price, margin analysis

D. Make-or-buy, lump-sum, cost-plus-incentive

**Answer:** A

**NEW QUESTION 487**

- (Exam Topic 4)

Analogous cost estimating relies on which of the following techniques?

- A. Expert judgment
- B. Project management software
- C. Vendor bid analysis
- D. Reserve analysis

**Answer:** A

**NEW QUESTION 488**

- (Exam Topic 4)

Co-location is a tool and technique of:

- A. Develop Human Resource Plan.
- B. Manage Project Team.
- C. Develop Project Team.
- D. Acquire Project Team.

**Answer:** C

**NEW QUESTION 493**

- (Exam Topic 4)

Which of the following is an input to the Direct and Manage Project Execution process?

- A. Approved change requests
- B. Approved contract documentation
- C. Work performance information
- D. Rejected change requests

**Answer:** A

**NEW QUESTION 495**

- (Exam Topic 4)

In Project Cost Management, which input is exclusive to the Determine Budget process?

- A. Scope baseline
- B. Organizational process assets
- C. Project schedule
- D. Resource calendars

**Answer:** D

**NEW QUESTION 500**

- (Exam Topic 4)

Labor, materials, equipment, and supplies are examples of:

- A. Resource attributes.
- B. Resource types.
- C. Resource categories.
- D. Resource breakdown structures (RBS).

**Answer:** C

**NEW QUESTION 503**

- (Exam Topic 4)

Which provides the basic framework for managing a project?

- A. Project life cycle
- B. Work breakdown structure (WBS)
- C. Enterprise environmental factors
- D. Project initiation

**Answer:** A

**NEW QUESTION 508**

- (Exam Topic 4)

Which of the following Process Groups covers all nine Project Management Knowledge Areas?

- A. Executing

- B. Monitoring and Controlling
- C. Planning
- D. Initiating

**Answer:** C

#### NEW QUESTION 513

- (Exam Topic 4)

When calculating the cost of quality (COQ) for a product or service, money spent for cost of conformance would include the areas of:

- A. training, testing, and warranty work.
- B. equipment, rework, and scrap.
- C. training, document processes, and inspections.
- D. inspections, rework, and warranty work.

**Answer:** C

#### NEW QUESTION 517

- (Exam Topic 4)

Which of the following is an input to Develop Human Resource Plan?

- A. Team performance assessment
- B. Roles and responsibilities
- C. Staffing management plan
- D. Enterprise environmental factors

**Answer:** D

#### NEW QUESTION 519

- (Exam Topic 4)

The risk management team of a software project has decided that due to the lack of adequate talent in the company, development of a specific part of the system is under high risk, so the team has decided to outsource it. This is an example of which risk response?

- A. Transfer
- B. Share
- C. Avoid
- D. Accept

**Answer:** A

#### NEW QUESTION 523

- (Exam Topic 4)

The precedence diagramming method (PDM) is also known as:

- A. Arrow Diagram.
- B. Critical Path Methodology (CPM).
- C. Activity-On-Node (AON).
- D. schedule network diagram.

**Answer:** C

#### NEW QUESTION 524

- (Exam Topic 4)

Which type of risk diagram is useful for showing time ordering of events?

- A. Ishikawa
- B. Milestone
- C. Influence
- D. Decision tree

**Answer:** C

#### NEW QUESTION 526

- (Exam Topic 4)

In which process is a project manager identified and given the authority to apply resources to project activities?

- A. Acquire Project Team
- B. Develop Project Management Plan
- C. Manage Project Execution
- D. Develop Project Charter

**Answer:** D

#### NEW QUESTION 528

- (Exam Topic 4)



Changes to formally controlled documentation, plans, etc. to reflect modified or additional ideas or content are known as:

- A. updates.
- B. defect repairs.
- C. preventive actions.
- D. corrective actions.

**Answer:** A

#### NEW QUESTION 531

- (Exam Topic 4)

Which process occurs within the Monitoring and Controlling Process Group?

- A. Control Costs
- B. Plan Quality
- C. Perform Quantitative Risk Analysis
- D. Determine Budget

**Answer:** A

#### NEW QUESTION 535

- (Exam Topic 4)

In which Process Group are lessons learned documented?

- A. Planning
- B. Closing
- C. Executing
- D. Initiating

**Answer:** B

#### NEW QUESTION 536

- (Exam Topic 4)

The progressive detailing of the project management plan is called:

- A. expert judgment.
- B. rolling wave planning.
- C. work performance information.
- D. specification.

**Answer:** B

#### NEW QUESTION 540

- (Exam Topic 4)

The purpose of inspection in Perform Quality Control is to keep errors:

- A. in line with a measured degree of conformity.
- B. out of the hands of the customer.
- C. in a specified range of acceptable results.
- D. out of the process.

**Answer:** B

#### NEW QUESTION 545

- (Exam Topic 4)

Which process determines the risks that might affect the project?

- A. Perform Qualitative Risk Analysis
- B. Identify Risks
- C. Plan Risk Management
- D. Perform Quantitative Risk Analysis

**Answer:** B

#### NEW QUESTION 549

- (Exam Topic 4)

Which tool and technique is used in Conduct Procurements?

- A. Teaming agreements
- B. Expert judgment
- C. Bidder conferences
- D. Contract types

**Answer:** C

#### NEW QUESTION 552

- (Exam Topic 4)

Which of the following strategic considerations often results in project authorization?

- A. Customer requests and/or issue resolution
- B. Stakeholder expectations and/or strategic opportunity (business need)
- C. Technological advancement and/or senior executive request
- D. Market demand and/or legal requirements

**Answer:** D

#### NEW QUESTION 554

- (Exam Topic 4)

Which technique is commonly used for the Perform Quantitative Risk Analysis process?

- A. Brainstorming
- B. Strategies for opportunities
- C. Decision tree analysis
- D. Risk data quality assessment

**Answer:** C

#### NEW QUESTION 555

- (Exam Topic 4)

Which of the following is a tool or technique of the Define Activities process?

- A. Rolling wave planning
- B. Precedence diagramming method (PDM)
- C. Alternatives analysis
- D. Parametric estimating

**Answer:** A

#### NEW QUESTION 560

- (Exam Topic 4)

Which is used to solicit proposals from prospective sellers?

- A. Procurement statement of work
- B. Resource calendars
- C. Procurement document
- D. Independent estimates

**Answer:** C

#### NEW QUESTION 561

- (Exam Topic 4)

In which type of organizational structure are staff members grouped by specialty?

- A. Functional
- B. Projectized
- C. Matrix
- D. Balanced

**Answer:** A

#### NEW QUESTION 566

- (Exam Topic 4)

Types of internal failure costs include:

- A. inspections.
- B. equipment and training.
- C. lost business.
- D. reworking and scrapping.

**Answer:** D

#### NEW QUESTION 571

- (Exam Topic 4)

Which tool or technique is used in Close Procurements?

- A. Contract plan
- B. Procurement plan
- C. Closure process
- D. Procurement audits

**Answer:** D

### NEW QUESTION 573

- (Exam Topic 4)

The project manager needs to review the templates in use. The templates are part of the:

- A. Enterprise environmental factors.
- B. Historical information,
- C. Organizational process assets.
- D. Corporate knowledge base.

**Answer: C**

### NEW QUESTION 576

- (Exam Topic 6)

Match the project manager's sphere of influence with the associated primary role.

Project Manager's Sphere of Influence		Project Manager's Primary Role
Professional discipline		Use informal and formal networks for communication among the sponsor, team, and stakeholders.
The industry		Advocate the project's value in interactions with other project managers to effectively gain the required resources and funding.
The project		Apply and transfer knowledge continuously to related professions.
The organization		Keep abreast of emerging technology developments and the changing market.

- A. Mastered
- B. Not Mastered

**Answer: A**

**Explanation:**

Project Manager's Sphere of Influence		Project Manager's Primary Role
Professional discipline	The project	Use informal and formal networks for communication among the sponsor, team, and stakeholders.
The industry	Professional discipline	Advocate the project's value in interactions with other project managers to effectively gain the required resources and funding.
The project	The industry	Apply and transfer knowledge continuously to related professions.
The organization	The organization	Keep abreast of emerging technology developments and the changing market.

### NEW QUESTION 580

- (Exam Topic 6)

A project manager has just completed several brainstorming sessions and has gathered the data to show commonality and differences in one single place. What technique was followed?

- A. Collective decision making
- B. Multicriteria decision analysis
- C. Mind mapping

D. Affinity diagram

**Answer:** C

#### NEW QUESTION 584

- (Exam Topic 6)

In an agile or adaptive environment, when should risk be monitored and prioritized?

- A. Only during the initiation and Closing phases
- B. During the initiation and Planning phases
- C. During each iteration as the project progresses
- D. Throughout the Planning process group and retrospective meeting

**Answer:** C

#### NEW QUESTION 589

- (Exam Topic 6)

A project manager is preparing to meet with three crucial project stakeholders on a new project. Which tools and techniques can the project manager use to capture stakeholder interest?

- A. Review stakeholder register and meeting
- B. Data analysis and communication skills
- C. Data gathering and data analysis
- D. Communication skills and cultural awareness

**Answer:** D

#### NEW QUESTION 592

- (Exam Topic 6)

Which of the following must be included in the risk register when the project manager completes the Identify Risks process?

- A. List of identified risks, potential risk owners, list of potential risk response
- B. List of identified risks, list of causes, list of risk categories
- C. Short risk titles, list of potential risk owners, list of impacts on objectives
- D. List of activities affected, list of potential risk responses, list of causes

**Answer:** A

#### NEW QUESTION 596

- (Exam Topic 6)

Which tools and techniques will a project manager use to develop a project charter?

- A. Project manager experience, expert judgment, scope statement, and meetings
- B. Lessons learned databases
- C. Interpersonal and team skills, cost baseline, and meetings
- D. Expert judgment, data gathering
- E. scope statement, schedule baseline, and meetings
- F. Expert judgment, data gathering
- G. interpersonal and team skills, and meetings

**Answer:** D

#### NEW QUESTION 598

- (Exam Topic 6)

The project management plan requires the acquisition of a special part available from a supplier located abroad. Which source selection method is being used?

- A. Least cost
- B. Qualifications only
- C. Sole source
- D. Fixed budget

**Answer:** B

#### NEW QUESTION 603

- (Exam Topic 6)

Responsible, accountable, consult and inform (RACI) is an example of which of the following?

- A. Text-oriented formal
- B. Resource management plan
- C. Organization chart
- D. Responsibility assignment matrix (RAM)

**Answer:** D

#### NEW QUESTION 605

- (Exam Topic 6)

Which of the following best correspond to the organizational process assets (OPAs) that affect the project?

- A. Policies and lessons learned from other projects
- B. Information technology software and employee capability
- C. Resource availability and employee capability
- D. Marketplace conditions and legal restrictions

Answer: A

#### NEW QUESTION 606

- (Exam Topic 6)

Company A has just been notified about a new legal requirement for its business operations. What is the classification of this item?

- A. Internal enterprise environmental factor
- B. Risk register database
- C. External enterprise environmental factor
- D. Organizational process asset

Answer: C

#### NEW QUESTION 611

- (Exam Topic 6)

A new project has been set. Four main stakeholders besides the project manager and four other team members have been identified. How many communication channels are available?

- A. 8
- B. 18
- C. 36
- D. 40

Answer: C

#### NEW QUESTION 616

- (Exam Topic 6)

A team receives four different requests from separate stakeholders related to one application Match each requirement with its corresponding type of change request.

Requirement		Type of Change Request
Add new functionality to the application		Update
Recover from a three-day delay		Defect repair
Reduce login time due to a corrupt login script		Preventive action
Install alarms to alert for non-conformances		Corrective action

- A. Mastered
- B. Not Mastered

Answer: A

#### Explanation:

Requirement		Type of Change Request
Add new functionality to the application	Add new functionality to the application	Update
Recover from a three-day delay	Install alarms to alert for non-conformances	Defect repair
Reduce login time due to a corrupt login script	Recover from a three-day delay	Preventive action
Install alarms to alert for non-conformances	Reduce login time due to a corrupt login script	Corrective action

#### NEW QUESTION 621

- (Exam Topic 6)

Which statement is related to the project manager's sphere of influence at the organizational level?

- A. A project manager interacts with other project managers to detect common interests and impacts between their projects.
- B. A project manager facilitates communication between the suppliers and contractors on the project.
- C. A project manager considers the current industry trends and evaluates how they can impact or be applied to the project.
- D. A project manager may inform other professionals about the value of project management.



**Answer:** A

**NEW QUESTION 624**

- (Exam Topic 6)

A project manager held a meeting and listed all team members' ideas for improving the product on a white board. What data gathering technique did the project manager apply?

- A. Focus groups
- B. Interviews
- C. Brainstorming
- D. Delphi technique

**Answer:** C

**NEW QUESTION 626**

- (Exam Topic 6)

A functional manager is delegating a key project to a project team without a project manager. Which communication method will be most effective?

- A. Interactive
- B. Push
- C. Verbal
- D. Oral

**Answer:** A

**NEW QUESTION 629**

- (Exam Topic 6)

Which of the following tasks focuses on decomposing work packages?

- A. Adjust duration estimates
- B. Define activities
- C. Complete rolling wave planning
- D. Develop milestone list

**Answer:** C

**NEW QUESTION 630**

- (Exam Topic 6)

What should the project manager use to evaluate the politics and power structure among stakeholders inside and outside of the organization?

- A. Expert judgment
- B. Interpersonal skills
- C. Team agreements
- D. Communication skills

**Answer:** D

**NEW QUESTION 632**

- (Exam Topic 6)

A project manager has to share a status report with a new stakeholder and is trying to determine the level of detail to include in the report. Which document best details the information the project manager needs to make this decision?

- A. Organizational process assets
- B. Change management plan
- C. Communications management plan
- D. Resource management plan

**Answer:** C

**NEW QUESTION 634**

- (Exam Topic 6)

How is program success measured?

- A. By delivering the benefit of managing the program's projects in a coordinated manner
- B. By the quality, timeliness, cost-effectiveness
- C. and customer satisfaction of the product or service
- D. By completing the right projects to achieve objectives rather than completing projects the right way
- E. By aggregating the successes of the individual projects in the program

**Answer:** A

**NEW QUESTION 635**

- (Exam Topic 6)

How can a project manager evaluate project team development?

- A. Produce team performance assessments.
- B. Hold weekly meetings to engage every member
- C. Complete a personal skill assessment on each team member
- D. Provide recognition awards to team members

**Answer:** A

#### NEW QUESTION 639

- (Exam Topic 6)

Which of these is true of project integration management?

- A. Project Integration Management is mandatory and more effective in larger projects.
- B. Project Integration Management and expert judgment are mutually exclusive.
- C. Project Integration Management is the responsibility of the project manager
- D. Project Integration Management excludes the triple constraints if cost performance index (CPI) equals zero.

**Answer:** D

#### NEW QUESTION 640

- (Exam Topic 6)

A project manager is experiencing a project with a high degree of change. Which type of stakeholder engagement does this project require?

- A. Discussing with management
- B. Escalating to the sponsors
- C. Engaging regularly with stakeholders
- D. Engaging only with decision makers

**Answer:** C

#### NEW QUESTION 642

- (Exam Topic 6)

Which is the best way for a project manager to ensure efficient and frequent communication with management and stakeholders in an agile/adaptive environment?

- A. Post project artifacts in a transparent fashion and engage stakeholders on a regular basis.
- B. Make surveys among the stakeholders and meet with the team once a month.
- C. Create a social network and post news there.
- D. Create personalized emails for each stakeholder, asking for requests and reviewing objectives with them periodically.

**Answer:** A

#### NEW QUESTION 644

- (Exam Topic 6)

A sponsor asks a project manager to provide a project's expected total costs based on its progress. What formula should the project manager use to determine this?

- A. Eamed value (EV) / actual cost (AC)
- B. Estimate at completion (EAC) - AC
- C. Budget at completion (BAC) / cost performance index (CPI)
- D. EV - planned value (PV)

**Answer:** B

#### NEW QUESTION 647

- (Exam Topic 6)

Which are inputs for the Plan Quality Management process?

- A. Quality metrics, project documents, and financial performance
- B. Quality management plan, project documents, and quality metrics
- C. Project management plan, project documents, and organizational process assets
- D. Project management plan, quality metric
- E. and project documents

**Answer:** C

#### NEW QUESTION 649

- (Exam Topic 6)

In which organizational structure would the project manager have most authority?

- A. Matrix-weak
- B. Matrix-balanced
- C. Matrix-strong
- D. Organic or simple

**Answer:** C

#### NEW QUESTION 651



- (Exam Topic 6)

The procurement requirements for a project include working with several vendors. What should the project manager take into consideration during the Project Procurement Management processes?

- A. Work performance information
- B. Bidder conferences
- C. Complexity of procurement
- D. Procurement management plan

**Answer:** D

#### NEW QUESTION 652

- (Exam Topic 6)

Which of the following is an example of tacit knowledge?

- A. Risk register
- B. Project requirements
- C. Expert judgment
- D. Make-or-buy analysis

**Answer:** C

#### NEW QUESTION 653

- (Exam Topic 6)

A project is in progress and about to move to a different phase, according to the plan. This will be a good opportunity for the project manager to:

- A. create the project management plan.
- B. identify the project objectives.
- C. review and update stakeholder engagement.
- D. create the schedule baseline.

**Answer:** C

#### NEW QUESTION 654

- (Exam Topic 6)

Which of the following is an example of an internal factor that influences the outcome of the project?

- A. Legal restrictions
- B. Financial considerations
- C. Commercial database
- D. Geographic distribution of facilities

**Answer:** D

#### Explanation:

(Geographic distribution of facilities and resources) EEFs internal to the organization pg 76 of 6th Edition. All other options are listed under the EEFs External to the organization

#### NEW QUESTION 656

- (Exam Topic 6)

When project requirements are documented in user stories then prioritized and refined just prior to construction, which approach is being used for scheduling?

- A. Iterative scheduling with backlog
- B. On-demand scheduling
- C. Life cycle scheduling with backlog
- D. Defining Iterative activities

**Answer:** A

#### NEW QUESTION 658

- (Exam Topic 6)

A project manager is identifying the risks of a project. Which technique should the project manager use?

- A. Representations of uncertainty
- B. Prompt lists
- C. Audits
- D. Risk categorization

**Answer:** B

#### NEW QUESTION 660

- (Exam Topic 6)

A project manager needs to tailor the Project Cost Management process. Which considerations should the project manager apply?

- A. Diversity background
- B. Stakeholder's relationships
- C. Technical expertise

D. Knowledge management

**Answer:** D

**NEW QUESTION 665**

- (Exam Topic 6)

Which components of the project management plan are inputs used when creating the stakeholder engagement plan?

- A. Risk, resource, and communications management plans
- B. Scope, quality, and resource management plans
- C. Procurement, integration, and risk management plans
- D. Communications, schedule, and cost management plans

**Answer:** A

**NEW QUESTION 667**

- (Exam Topic 6)

Under which circumstances should multiple projects be grouped in a program?

- A. When they are needed to accomplish a set of goals and objectives for an organization
- B. When they have the same project manager and the same organizational unit
- C. When they have the same scope, budget, and schedule
- D. When they are from the same unit of the organization

**Answer:** A

**NEW QUESTION 671**

- (Exam Topic 6)

The project manager is using co-location and providing training to the project team. On which of the following Project Resource Management processes is the project manager working?

- A. Acquire Resources
- B. Control Resources
- C. Manage Team
- D. Develop Team

**Answer:** D

**NEW QUESTION 673**

- (Exam Topic 6)

In a functional organization, the director of an important stakeholder business group expressed concern to a line manager about the progress of the project. What should the line manager do next?

- A. Hold a face-to-face meeting with the project manager and warn them.
- B. Point the director to a link where they can take a look at the reports.
- C. Invite stakeholders to attend monthly progress review meetings.
- D. Ask the project manager to update the monthly status report distribution list.

**Answer:** C

**NEW QUESTION 674**

- (Exam Topic 6)

What is the first step in the Stakeholder Management process?

- A. Plan Stakeholder Engagement
- B. Identify Stakeholders
- C. Manage Stakeholder Responsibility
- D. Monitor Stakeholder Activity

**Answer:** B

**NEW QUESTION 675**

- (Exam Topic 6)

When managing costs in an agile environment, what should a project manager consider?

- A. Lightweight estimation methods can be used as changes arise.
- B. Agile environments make cost aggregation more difficult.
- C. Agile environments make projects more costly and uncertain.
- D. Detailed cost calculations benefit from frequent changes.

**Answer:** A

**NEW QUESTION 678**

- (Exam Topic 6)

Project reporting is a tool that is most closely associated with which process?

- A. Communicate Plan
- B. Manage Communications
- C. Report Performance
- D. Control Communications

**Answer:** B

#### NEW QUESTION 681

- (Exam Topic 6)

In which of the Risk Management processes is the project charter used as an input?

- A. Plan Risk Responses
- B. Implement Risk Responses
- C. Plan Risk Management
- D. Perform Quantitative Risk Responses

**Answer:** C

#### NEW QUESTION 686

- (Exam Topic 6)

Match each dimension of the communications management plan to its corresponding focus.

Dimension		Focus
Formal		Project stakeholders
Internal		Customers and vendors
Informal		Reports, meeting agendas, and minutes
External		General communications activities using email

- A. Mastered
- B. Not Mastered

**Answer:** A

**Explanation:**

Dimension		Focus
Formal	Internal	Project stakeholders
Internal	External	Customers and vendors
Informal	Formal	Reports, meeting agendas, and minutes
External	Informal	General communications activities using email

#### NEW QUESTION 688

- (Exam Topic 6)

In a project using agile methodology, who may perform the quality control activities?

- A. A group of quality experts at specific times during the project
- B. The project manager only
- C. All team members throughout the project life cycle
- D. Selected stakeholders at specific times during the project

**Answer:** C

#### NEW QUESTION 690

- (Exam Topic 6)

What scenario describes when a project must be created due to market demand?

- A. A public company authorizes a project to create a new service for electric car sharing to reduce pollution.
- B. A car company authorizes a project to build more fuel-efficient cars in response to gasoline shortages.
- C. Researchers develop an autonomous car.
- D. with several new features to be commercialized in the future.
- E. Stakeholders request that raw materials be changed due to locally high costs.

**Answer:** B

#### NEW QUESTION 695

- (Exam Topic 6)

Which action should the project manager take after the team finishes executing the scope?

- A. Verify the deliverables to ensure that they are correct and meet the customer's satisfaction.

- B. Accept all the deliverables and deliver them to the customer for final acceptance.
- C. Conduct a joint session with the customer, change the deliverables, and then request approval.
- D. Check that all change requests were implemented and release deliverables to the customer.

**Answer:** A

#### NEW QUESTION 698

- (Exam Topic 6)

At the beginning of an iteration, the team will work to determine how many of the highest-priority items on the backlog list can be delivered within the next iteration. Which of the following activities is done first?

- A. Create Work Breakdown Structure (WBS)
- B. Create Scope Baseline
- C. Collect Requirements
- D. Define Scope

**Answer:** D

#### NEW QUESTION 703

- (Exam Topic 6)

A project stakeholder is requesting changes to the project plan. Which process group addresses this?

- A. Initiating Process Group
- B. Planning Process Group
- C. Executing Process Group
- D. Monitoring and Controlling Process Group

**Answer:** D

#### NEW QUESTION 704

- (Exam Topic 6)

Which set of activities should a project manager use as part of the Develop Team process?

- A. Training and establishing ground rules
- B. Networking activities and estimating team resources
- C. Conflict management activities and tracking team performance
- D. Recruit new team members and training

**Answer:** A

#### NEW QUESTION 706

- (Exam Topic 6)

In an agile and adaptive project, which scope management entity invokes stakeholder engagement?

- A. Collect Requirements
- B. Create work breakdown structure (WBS)
- C. Plan Scope Management
- D. Scope Baseline

**Answer:** A

#### NEW QUESTION 709

.....

## THANKS FOR TRYING THE DEMO OF OUR PRODUCT

Visit Our Site to Purchase the Full Set of Actual CAPM Exam Questions With Answers.

We Also Provide Practice Exam Software That Simulates Real Exam Environment And Has Many Self-Assessment Features. Order the CAPM Product From:

<https://www.2passeasy.com/dumps/CAPM/>

## Money Back Guarantee

### **CAPM Practice Exam Features:**

- \* CAPM Questions and Answers Updated Frequently
- \* CAPM Practice Questions Verified by Expert Senior Certified Staff
- \* CAPM Most Realistic Questions that Guarantee you a Pass on Your FirstTry
- \* CAPM Practice Test Questions in Multiple Choice Formats and Updatesfor 1 Year