

# Microsoft

## Exam Questions MD-102

Endpoint Administrator



### NEW QUESTION 1

- (Exam Topic 4)

You have an Azure AD tenant named contoso.com.

You need to ensure that users are not added automatically to the local Administrators group when they join their Windows 11 device to contoso.com.

What should you configure?

- A. Windows Autopilot
- B. provisioning packages for Windows
- C. Security defaults in Azure AD
- D. Device settings in Azure AD

**Answer: D**

#### Explanation:

To ensure that users are not added automatically to the local Administrators group when they join their Windows 11 device to contoso.com, you should configure the Device settings in Azure AD. The Device settings allow you to manage which users can join devices to Azure AD and whether they are added as local administrators or standard users. By default, users who join devices to Azure AD are added to the local Administrators group, but you can change this setting to None or Selected1.

The other options are not relevant for this scenario because:

➤ Windows Autopilot is a service that allows you to pre-configure new devices and enroll them automatically to Azure AD and Microsoft Intune. It does not control the local administrator role of the users who join the devices2.

➤ Provisioning packages for Windows are files that contain custom settings and policies that can be applied to Windows devices during the setup process. They do not affect the Azure AD join process or the local administrator role of the users3.

➤ Security defaults in Azure AD are a set of basic identity security mechanisms that are enabled by default to protect your organization from common attacks. They do not include any settings related to device management or local administrator role4.

References: Manage device identities using the Microsoft Entra admin center, Windows Autopilot, Provisioning packages for Windows 10, What are security defaults?

### NEW QUESTION 2

- (Exam Topic 4)

You have a Microsoft 365 subscription that includes Microsoft Intune.

You need to implement a Microsoft Defender for Endpoint solution that meets the following requirements:

- Enforces compliance for Defender for Endpoint by using Conditional Access
- Prevents suspicious scripts from running on devices

What should you configure? To answer, drag the appropriate features to the correct requirements. Each feature may be used once, more than once, or not at all.

You may need to drag the split bar between panes or scroll to view content.

NOTE: Each correct selection is worth one point.

Features	Answer Area
A device restriction policy	Enforces compliance: <input type="text"/>
A security baseline	Prevents suspicious scripts: <input type="text"/>
An attack surface reduction (ASR) rule	
An Intune connection	

- A. Mastered
- B. Not Mastered

**Answer: A**

#### Explanation:

To enforce compliance for Defender for Endpoint by using Conditional Access, you need to configure an Intune connection in the Defender for Endpoint portal. This allows you to use Intune device compliance policies to evaluate the health and compliance status of devices that are enrolled in Defender for Endpoint. You can then use Conditional Access policies to block or allow access to cloud apps based on the device compliance status. References:

<https://docs.microsoft.com/en-us/windows/security/threat-protection/microsoft-defender-atp/conditional-access>

To prevent suspicious scripts from running on devices, you need to configure an attack surface reduction (ASR) rule in Intune. ASR rules are part of the endpoint protection settings that you can apply to devices by using device configuration profiles. You can use the ASR rule “Block Office applications from creating child processes” to prevent Office applications from launching child processes such as scripts or executables. References:

<https://docs.microsoft.com/en-us/mem/intune/protect/endpoint-protection-windows-10#attack-surface-reduction>

### NEW QUESTION 3

- (Exam Topic 4)

You have a Microsoft Azure subscription that contains an Azure Log Analytics workspace.

You deploy a new computer named Computer1 that runs Windows 10. Computer1 is in a workgroup. You need to ensure that you can use Log Analytics to query events from Computer1.

What should you do on Computer1?

- A. Join Azure AD.
- B. Configure Windows Defender Firewall
- C. Create an event subscription.
- D. Install the Azure Monitor Agent.

Answer: D

#### NEW QUESTION 4

- (Exam Topic 4)

You need to implement mobile device management (MDM) for personal devices that run Windows 11. The solution must meet the following requirements:

- Ensure that you can manage the personal devices by using Microsoft Intune.
- Ensure that users can access company data seamlessly from their personal devices.
- Ensure that users can only sign in to their personal devices by using their personal account What should you use to add the devices to Azure AD?

- A. Azure AD registered
- B. hybrid Azure AD join
- C. AD joined

Answer: A

#### Explanation:

To implement MDM for personal devices that run Windows 11, you should use Azure AD registered. Azure AD registered devices are devices that are connected to your organization's resources using a personal device and a personal account. You can manage these devices by using Microsoft Intune and enable seamless access to company data. Users can only sign in to their personal devices by using their personal account, not their organizational account. Azure AD registered devices support Windows 10 or newer, iOS, Android, macOS, and Ubuntu 20.04/22.04 LTS1.

The other options are not suitable for this scenario because:

➤ Hybrid Azure AD join is for corporate-owned and managed devices that are joined to both on-premises Active Directory and Azure AD. Users can sign in to these devices by using their organizational account that exists in both directories2.

➤ AD joined is for devices that are joined only to on-premises Active Directory. These devices are not managed by Microsoft Intune and do not have access to cloud resources3.

References: What are Azure AD registered devices?, What are hybrid Azure AD joined devices?, What is Active Directory domain join?

#### NEW QUESTION 5

- (Exam Topic 4)

You create a Windows Autopilot deployment profile.

You need to configure the profile settings to meet the following requirements:

➤ Include the hardware serial number in the computer name.

Which two settings should you configure? To answer, select the appropriate settings in the answer area.

NOTE: Each correct selection is worth one point.

#### Answer Area

### Create profile ...

Windows PC

✓ Basics **2 Out-of-box experience (OOBE)** 3 Assignments 4 Review + create

#### Configure the out-of-box experience for your Autopilot devices

Deployment mode *	①	User-Driven	▼
Join to Azure AD as *	①	Azure AD joined	▼
Microsoft Software License Terms	①	Show	Hide
<b>i</b> important information about hiding license terms			
Privacy settings	①	Show	Hide
<b>i</b> The default value for diagnostic data collection has changed for devices running Windows 10, version 1903 and later. <a href="#">Learn more</a>			
Hide change account options	①	Show	Hide
User account type	①	Administrator	Standard
Allow White Glove OOBE	①	No	Yes
Language (Region)	①	Operating system default ▼	
Automatically configure keyboard	①	No	Yes
Apply device name template	①	No	Yes

- A. Mastered
- B. Not Mastered

**Answer:** A

**Explanation:**

Reference:  
<https://docs.microsoft.com/en-us/mem/autopilot/profiles>

**NEW QUESTION 6**

- (Exam Topic 4)

You have a Windows 11 capable device named Device1 that runs the 64-bit version of Windows 10 Enterprise and has Microsoft Office 2019 installed. You have the Windows 11 Enterprise images shown in the following table.

Name	Platform	Description
Image1	x64	Custom Windows 11 image that has Office 2021 installed
Image2	x64	Default Windows 11 image created by Microsoft

Which images can be used to perform an in-place upgrade of Device1?

- A. image1 only
- B. Image2only
- C. Image1 and Image2

**Answer:** B

**NEW QUESTION 7**

- (Exam Topic 4)

You have a Microsoft 365 subscription that uses Microsoft Intune.  
You plan to use Windows Autopilot to provision 25 Windows 11 devices. You need to meet the following requirements during device provisioning:

- Display the progress of app and profile deployments.
- Join the devices to Azure AD.

What should you configure to meet each requirement? To answer drag the appropriate settings to the correct requirements. Each setting may be used once, more than once, or not at all. You may need to drag the split bar between panes or scroll to view content.  
NOTE: Each correct selection is worth one point.

**Settings**

CNAME Validation

Co-management Settings

Deployment Profiles

Enrollment notifications

Enrollment Status Page

**Answer Area**

Display the progress of app and profile deployments:

Join the devices to Azure AD:

- A. Mastered
- B. Not Mastered

**Answer:** A

**Explanation:**

**Settings**

CNAME Validation

Co-management Settings

Deployment Profiles

Enrollment notifications

Enrolment Status Page

**Answer Area**

Display the progress of app and profile deployments: Enrollment Status Page

Join the devices to Azure AD: Deployment Profiles

**NEW QUESTION 8**

- (Exam Topic 4)

Your network contains an on-premises Active Directory Domain Services {AD DS} domain that syncs with an Azure AD tenant by using Azure AD Connect.  
You use Microsoft Intune and Configuration Manager to manage devices.  
You need to recommend a deployment plan for new Windows 11 devices. The solution must meet the following requirements:



- Devices for the marketing department must be joined to the AD DS domain only. The IT department will install complex applications on the devices at build time, before giving the devices to the marketing department users.
- Devices for The sales department must be Azure AD joined. The devices will be shipped directly from the manufacturer to The homes of the sales department users.
- Administrative effort must be minimized.

Which deployment method should you recommend for each department? To answer, select the appropriate options in the answer area. NOTE: Each correct selection is worth one point.

Answer Area

Sales:

Windows Autopilot with automatic registration

Configuration Manager

Windows Autopilot with automatic registration

Windows Autopilot with manual registration

Windows Autopilot with OEM registration

Marketing:

Configuration Manager

Configuration Manager

Windows Autopilot with automatic registration

Windows Autopilot with manual registration

Windows Autopilot with OEM registration

- A. Mastered  
B. Not Mastered

Answer: A

Explanation:

Answer Area

Sales:

Windows Autopilot with automatic registration

Configuration Manager

Windows Autopilot with automatic registration

Windows Autopilot with manual registration

Windows Autopilot with OEM registration

Marketing:

Configuration Manager

Configuration Manager

Windows Autopilot with automatic registration

Windows Autopilot with manual registration

Windows Autopilot with OEM registration

NEW QUESTION 9

- (Exam Topic 4)

You have a computer named Computer1 that runs Windows 11.  
A user named User1 plans to use Remote Desktop to connect to Computer1.  
You need to ensure that the device of User1 is authenticated before the Remote Desktop connection is established and the sign in page appears.  
What should you do on Computer1?

- A. Turn on Reputation-based protection.  
B. Enable Network Level Authentication (NLA).  
C. Turn on Network Discovery.  
D. Configure the Remote Desktop Configuration service.

Answer: B

NEW QUESTION 10

- (Exam Topic 4)

You have a computer that runs Windows 10 and contains two local users named User1 and User2. You need to ensure that the users can perform the following anions:

- User 1 must be able to adjust the date and time.
  - User2 must be able to clear Windows logs.
- The solution must use the principle of least privilege.

To which group should you add each user? To answer, drag the appropriate groups to the correct users. Each group may be used once, more than once, or not at all. You may need to drag the split bar between panes or scroll to view content.

NOTE: Each correct selection is worth one point.

Groups

Administrators

Event Log Readers

Performance Log Users

Power Users

System Managed Accounts Group

Answer Area

User1:

User2:

- A. Mastered

B. Not Mastered

Answer: A

Explanation:

Groups

Administrators

Event Log Readers

Performance Log Users

Power Users

System Managed Accounts Group

Answer Area

User1: Administrators

User2: Event Log Readers

NEW QUESTION 10

- (Exam Topic 4)

Your company uses Microsoft Defender for Endpoint Microsoft Defender for Endpoints includes the device groups shown in the following table.

Rank	Name	Members
1	Group1	Tag Equals demo And OS In Windows 10
2	Group2	Tag Equals demo
3	Group3	Domain Equals adatum.com
4	Group4	Domain Equals adatum.com And OS In Windows 10
5	Group5	Name starts with COMP
Last	Ungrouped machines (default)	Not applicable

You onboard a computer to Microsoft Defender for Endpoint as shown in the following exhibit.

computer1

Actions

Domain: adatum.com

OS: Windows10 64-bit (Build 17134)

Machine IP addresses

What is the effect of the Microsoft Defender for Endpoint configuration? To answer, select the appropriate options in the answer area.  
NOTE: Each correct selection is worth one point.

Answer Area

Computer1 will be a member of:

Group3 only

Group4 only

Grou5 only

Group3, Group4, and Group5 only

If you add the tag demo to Computer1, Computer1 will be a member of:

Group1 only

Group2 only

Group1 and Group2 only

Group1, Group2, Group3, Group4, and Group5

- A. Mastered
- B. Not Mastered

Answer: A

Explanation:

Answer Area

Computer1 will be a member of:

Group3 only  
Group4 only  
Grou5 only  
Group3, Group4, and Group5 only

If you add the tag demo to Computer1, Computer1 will be a member of:

Group1 only  
Group2 only  
Group1 and Group2 only  
Group1, Group2, Group3, Group4, and Group5

NEW QUESTION 12

- (Exam Topic 4)  
You have a Microsoft 365 ES subscription that uses Microsoft Intune. Devices are enrolled in Intune as shown in the following table.

Name	Platform	Enrolled by using
Device1	iOS	Apple Automated Device Enrollment (ADE)
Device2	iPadOS	Apple Automated Device Enrollment (ADE)
Device3	iPadOS	The Company Portal app

The devices are the members of groups as shown in the following table.

Name	Members
Group1	Device1, Device2, Device3
Group2	Device2

You create an JOS/iPadOS update profile as shown in the following exhibit.

Create profile

iOS/iPadOS

✓ Basics

✓ Update policy settings

✓ Assignments

ⓘ Review + create

Summary

Basics

Name

Profile1

Description

--

Update policy settings

Update to install

Install iOS/iPadOS Latest update

Schedule type

Update outside of scheduled time

Time zone

UTC±00

Time window

Start day	Start time	End day	End time
Monday	1 AM	Wednesday	1 PM
Friday	1 AM	Saturday	11 PM

Assignments

Included groups

Group

Group Members ⓘ

Group1

3 devices, 0 users

Excluded groups

Group

Group Members ⓘ

Group2

1 devices, 0 users

For each of the following statements, select Yes if the statement is true. Otherwise, select No. NOTE: Each correct selection is worth one point.

Answer Area

Statements	Yes	No
If an iOS update becomes available on Tuesday at 5 AM, the update is installed on Device1 automatically on Wednesday.	<input type="radio"/>	<input type="radio"/>
If an iPadOS update becomes available on Thursday at 2 AM, the update is installed on Device2 automatically on Thursday.	<input type="radio"/>	<input type="radio"/>
If an iPadOS update becomes available on Friday at 10 PM, the update is installed on Device3 automatically on Sunday.	<input type="radio"/>	<input type="radio"/>

- A. Mastered
- B. Not Mastered

Answer: A

Explanation:

Answer Area

Statements	Yes	No
If an iOS update becomes available on Tuesday at 5 AM, the update is installed on Device1 automatically on Wednesday.	<input type="radio"/>	<input checked="" type="radio"/>
If an iPadOS update becomes available on Thursday at 2 AM, the update is installed on Device2 automatically on Thursday.	<input type="radio"/>	<input checked="" type="radio"/>
If an iPadOS update becomes available on Friday at 10 PM, the update is installed on Device3 automatically on Sunday.	<input type="radio"/>	<input checked="" type="radio"/>

NEW QUESTION 14

- (Exam Topic 4)

You have a Microsoft Deployment Toolkit (MDT) server named MDT1.

When computers start from the LiteTouchPE\_x64.iso image and connect to MDT1. the welcome screen appears as shown In the following exhibit.



You need to prevent the welcome screen from appearing when the computers connect to MDT1.

Which three actions should you perform in sequence? To answer move the appropriate actions from the list of actions to the answer area and arrange them in the correct order.

Actions	Answer Area
Modify the CustomSettings.ini file.	
Update the deployment share.	
Modify the Bootstrap.ini file.	<input type="radio"/>
Replace the ISO image.	<input type="radio"/>
Modify the task sequence.	

- A. Mastered
- B. Not Mastered



Answer: A

Explanation:

Box 1: Modify the Bootstrap.ini file.

Add this to your bootstrap.ini file and then update the deployment share and use the new boot media created in that process:

SkipBDDWelcome=YES

Box 2: Modify the CustomSettings.ini file. SkipBDDWelcome

Indicates whether the Welcome to Windows Deployment wizard page is skipped.

For this property to function properly it must be configured in both CustomSettings.ini and BootStrap.ini. BootStrap.ini is processed before a deployment share

(which contains CustomSettings.ini) has been selected.

Box 3: Update the deployment share. Reference:

<https://docs.microsoft.com/en-us/mem/configmgr/mdt/toolkit-reference#table-6-deployment-wizard-pages>

NEW QUESTION 16

- (Exam Topic 4)

You have a Microsoft 365 subscription that contains 1,000 Windows 11 devices enrolled in Microsoft Intune. You plan to create and monitor the results of a compliance policy used to validate the BIOS version of the devices.

Which four actions should you perform in sequence? To answer, move the appropriate actions from the list of actions to the answer area and arrange them in the correct order.

Actions

Review the compliance dashboard for results.

Create and assign a compliance policy that has System Security settings configured.

Review the Conditional Access Insights and Reporting workbook for results.

Create a PowerShell discovery script and a JSON file.

Upload the PowerShell script to Intune.

Upload the JSON file to Azure AD.

Create and assign a custom compliance policy.

Answer Area

1

2

3

4

- A. Mastered
- B. Not Mastered

Answer: A

Explanation:

Actions

Review the compliance dashboard for results.

Create and assign a compliance policy that has System Security settings configured.

Review the Conditional Access Insights and Reporting workbook for results.

Create a PowerShell discovery script and a JSON file.

Upload the PowerShell script to Intune.

Upload the JSON file to Azure AD.

Create and assign a custom compliance policy.

Answer Area

Create a PowerShell discovery script and a JSON file.

Upload the PowerShell script to Intune.

Upload the JSON file to Azure AD.

Create and assign a custom compliance policy.

NEW QUESTION 17

- (Exam Topic 4)

You have a Microsoft 365 E5 subscription and 100 computers that run Windows 10.

You need to deploy Microsoft Office Professional Plus 2019 to the computers by using Microsoft Office Deployment Tool (ODT).

What should you use to create a customization file for ODT?

- A. the Microsoft 365 admin center
- B. the Microsoft Intune admin center
- C. the Microsoft Purview compliance portal
- D. the Microsoft 365 Apps admin center

Answer: D

NEW QUESTION 22

- (Exam Topic 4)

You have 200 computers that run Windows 10. The computers are joined to Microsoft Azure Active Directory (Azure AD) and enrolled in Microsoft Intune.

You need to configure an Intune device configuration profile to meet the following requirements:

- Prevent Microsoft Office applications from launching child processes.
- Block users from transferring files over FTP.

Which two settings should you configure in Endpoint protection? To answer, select the appropriate settings in the answer area.

NOTE: Each correct selection is worth one point.

Answer Area

Create Profile

\*Name

MD101

Description

Enter a description

\*Platform

Windows 10 and later

\*Profile type

Endpoint protection

Settings

Configure

Scope (Tags)

0 scope(s) selected

Endpoint protection

Windows 10 and later

Select a category to configure settings

Windows Defender Application Gu...  
11 settings available

Windows Defender Firewall  
40 settings available

Windows Defender SmartScreen  
2 settings available

Windows Encryption  
37 settings available

Windows Defender Exploit Guard  
20 settings available

Windows Defender Application Co...  
2 settings available

Windows Defender Application Gua...  
1 setting available

Windows Defender Security Center  
14 settings available

Local device security options  
46 settings available

Xbox services  
5 settings available

OK

- A. Mastered  
B. Not Mastered

Answer: A

Explanation:

A screenshot of a computer Description automatically generated

References:

<https://docs.microsoft.com/en-us/intune/endpoint-protection-windows-10>

NEW QUESTION 24

- (Exam Topic 4)

You have a Microsoft 365 E5 subscription that contains 500 macOS devices enrolled in Microsoft Intune. You need to ensure that you can apply Microsoft Defender for Endpoint antivirus policies to the macOS devices. The solution must minimize administrative effort. What should you do?

- A. From the Microsoft Endpoint Manager admin center, create a configuration profile.  
B. From the Microsoft Endpoint Manager admin center, create a security baseline.  
C. Onboard the macOS devices to the Microsoft 365 compliance center.  
D. Install Defender for Endpoint on the macOS devices.

Answer: D

Explanation:

Just install, and use Defender for Endpoint on Mac. Reference:

<https://docs.microsoft.com/en-us/microsoft-365/security/defender-endpoint/microsoft-defender-endpoint-mac>

NEW QUESTION 25

- (Exam Topic 4)

You have a Microsoft 365 subscription that contains two security groups named Group1 and Group2. Microsoft 365 uses Microsoft Intune Suite. You use Microsoft Intune to manage devices.

You need to assign roles in Intune to meet the following requirements:

- The members of Group1 must manage Intune roles and assignments.
- The members of Group2 must assign existing apps and policies to users and devices.

The solution must follow the principle of least privilege.

Which role should you assign to each group? To answer, select the appropriate options in the answer area. NOTE: Each correct selection is worth one point.

Answer Area



- A. Mastered
- B. Not Mastered

Answer: A

Explanation:

To assign roles in Intune to meet the requirements, you should assign the following roles to each group: Group1: Intune Role Administrator Group2: Help Desk Operator

- > The Intune Role Administrator role is the only Intune role that can manage custom Intune roles and add assignments for built-in Intune roles1. This role meets the requirement for Group1 to manage Intune roles and assignments.
- > The Help Desk Operator role can perform remote tasks on users and devices, and can assign applications or policies to users or devices1. This role meets the requirement for Group2 to assign existing apps and policies to users and devices.

NEW QUESTION 26

- (Exam Topic 4)

You have a Microsoft 365 subscription.

You plan to enroll devices in Microsoft Endpoint Manager that have the platforms and versions shown in the following table.

Platform	Version
Android	8, 9
iOS	11, 12

You need to configure device enrollment to meet the following requirements:

- > Ensure that only devices that have approved platforms and versions can enroll in Endpoint Manager.
- > Ensure that devices are added to Microsoft Azure Active Directory (Azure AD) groups based on a selection made by users during the enrollment.

Which device enrollment setting should you configure for each requirement? To answer, select the appropriate options in the answer area.

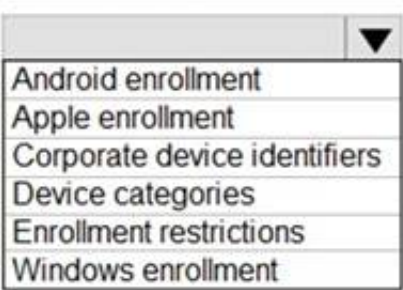
NOTE: Each correct selection is worth one point.

Answer Area

Ensure that only devices that have approved platforms and versions can enroll in Endpoint Manager:



Ensure that devices are added to Azure AD groups based on a selection made by users during enrollment:



- A. Mastered
- B. Not Mastered

Answer: A

Explanation:

A screenshot of a computer Description automatically generated

Reference:

<https://docs.microsoft.com/en-us/mem/intune/enrollment/enrollment-restrictions-set> <https://docs.microsoft.com/en-us/mem/intune/enrollment/device-group-mapping>



**NEW QUESTION 27**

- (Exam Topic 4)

Note: This question is part of a series of questions that present the same scenario. Each question in the series contains a unique solution that might meet the stated goals. Some question sets might have more than one correct solution, while others might not have a correct solution.

After you answer a question in this section, you will NOT be able to return to it. As a result, these questions will not appear in the review screen.

Your network contains an Active Directory domain. The domain contains a computer named Computer1 that runs Windows 8.1.

Computer1 has apps that are compatible with Windows 10.

You need to perform a Windows 10 in-place upgrade on Computer1.

Solution: You copy the Windows 10 installation media to a Microsoft Deployment Toolkit (MDT) deployment share. You create a task sequence, and then you run the MDT deployment wizard on Computer1. Does this meet the goal?

- A. Yes
- B. No

**Answer: B**

**NEW QUESTION 32**

- (Exam Topic 4)

You have a Microsoft Deployment Toolkit (MDT) solution that is used to manage Windows 11 deployment tasks. MDT contains the operating system images shown in the following table.

Name	Description
Image1.wim	Custom-built Windows 10 image that has preinstalled custom apps
Image2.wim	Custom-built Windows 10 image without apps
Install.wim	Default Windows 10 image

You need to perform a Windows 11 in-place upgrade on several computers that run Windows 10. From the Deployment Workbench, you open the New Task Sequence Wizard.

You need to identify which task sequence template and which operating system image to use for the task sequence. The solution must minimize administrative effort.

What should you identify? To answer, select the appropriate options in the answer area.

NOTE: Each correct selection is worth one point.

**Answer Area**

Task sequence template:

Standard Client Task Sequence

Standard Client Replace Task Sequence

Standard Client Upgrade Task Sequence

Operating system image:

Image1.wim

Image2.wim

Install.wim

- A. Mastered
- B. Not Mastered

**Answer: A**

**Explanation:**

Box 1: Standard Client Upgrade Task Sequence

Use Template: Standard Client Upgrade Task Sequence

In-place upgrade is the preferred method to use when migrating from Windows 10 to a later release of Windows 10, and is also a preferred method for upgrading from Windows 7 or 8.1 if you do not plan to significantly change the device's configuration or applications. MDT includes an in-place upgrade task sequence template that makes the process really simple.

Box 2: Install.wim

In-place upgrade differs from computer refresh in that you cannot use a custom image to perform the in-place upgrade. I

Reference:

<https://docs.microsoft.com/en-us/windows/deployment/deploy-windows-mdt/upgrade-to-windows-10-with-the>

**NEW QUESTION 35**

- (Exam Topic 4)

Your network contains an Active Directory domain. The domain contains a computer named Computer1 that runs Windows 8.1.

Computer1 has apps that are compatible with Windows 10.

You need to perform a Windows 10 in-place upgrade on Computer1.

Solution: You copy the Windows 10 installation media to a network share. You start Computer1 from Windows PE (WinPE), and then you run setup.exe from the



network share.  
Does this meet the goal?

- A. Yes
- B. No

**Answer:** B

**NEW QUESTION 38**

- (Exam Topic 4)

Your company uses Microsoft Intune to manage devices.

You need to ensure that only Android devices that use Android work profiles can enroll in intune. Which two configurations should you perform in the device enrollment restrictions? Each correct answer presents part of the solution.

NOTE Each correct selection is worth one point.

- A. From Platform Settings, set Android device administrator Personally Owned to Block.
- B. From Platform Settings, set Android Enterprise (work profile) to Allow.
- C. From Platform Settings, set Android device administrator Personally Owned to Allow
- D. From Platform Settings, set Android device administrator to Block.

**Answer:** AB

**Explanation:**

To ensure that only Android devices that use Android work profiles can enroll in Intune, you need to perform two configurations in the device enrollment restrictions. First, you need to set Android device administrator Personally Owned to Block. This prevents users from enrolling personal Android devices that use device administrator mode. Second, you need to set Android Enterprise (work profile) to Allow. This allows users to enroll corporate-owned or personal Android devices that use work profiles. References: <https://docs.microsoft.com/en-us/mem/intune/enrollment/enrollment-restrictions-set>

**NEW QUESTION 41**

- (Exam Topic 4)

You have a Microsoft 365 subscription that uses Microsoft Intune Suite. You use Microsoft Intune to manage devices.

You plan to deploy two apps named App1 and App2 to all Windows devices. App1 must be installed before App2.

From the Intune admin center, you create and deploy two Windows app (Win32) apps. You need to ensure that App1 is installed before App2 on every device. What should you configure?

- A. the App1 deployment configurations
- B. a dynamic device group
- C. a detection rule
- D. the App2 deployment configurations

**Answer:** C

**Explanation:**

The correct answer is D because you can configure the dependencies for a Win32 app in the deployment configurations1. Dependencies are other Win32 apps that must be installed before your Win32 app can be installed1. You can add Win32 app dependencies only after your Win32 app has been added and uploaded to Intune2. In this case, you need to configure the App2 deployment configurations to add App1 as a dependency 2. References: 1: Microsoft Intune Win32 App Dependencies - MSEndpointMgr <https://msendpointmgr.com/2019/06/03/new-intune-feature-win32-app-dependencies/> 2: Add and assign Win32 apps to Microsoft Intune | Microsoft Learn <https://learn.microsoft.com/en-us/mem/intune/apps/apps-win32-add>

**NEW QUESTION 44**

- (Exam Topic 4)

You have a Microsoft 365 subscription that uses Microsoft Intune and contains the users shown in the following table.

Name	Member of
User1	Group1
User2	None
User3	None

You create a policy set named Set1 as shown in the exhibit. (Click the Exhibit tab.)

Device management [Edit](#)

Device configuration profiles (1)

Name	Platform	Profile Type
<a href="#">ConfigurationProfile1</a>	Windows 10 and later	Device restrictions

Device compliance policies (1)

Name	Platform	Profile Type
<a href="#">CompliancePolicy1</a>	Windows 10 and later	Windows 10 and later co...

Device enrollment [Edit](#)

Windows autopilot deployment profiles

No results

Enrollment status pages

No results.

Assignments [Edit](#)

Included groups	All Users
Excluded groups	Group1

You enroll devices in Intune as shown in the following table.

Name	Operating system	User
Device1	Windows 10	User1
Device2	Windows 11	User2
Device3	Android	User3

For each of the following statements, select Yes if the statement is true. Otherwise, select No. NOTE: Each correct selection is worth one point.

Answer Area

Statements	Yes	No
If User1 signs in to Device1, Device1 will have both ConfigurationProfile1 and CompliancePolicy1 assigned.	<input type="radio"/>	<input type="radio"/>
If User2 signs in to Device2, Device2 will have both ConfigurationProfile1 and CompliancePolicy1 assigned.	<input type="radio"/>	<input type="radio"/>
If User3 signs in to Device3, Device3 will have both ConfigurationProfile1 and CompliancePolicy1 assigned.	<input type="radio"/>	<input type="radio"/>

- A. Mastered
- B. Not Mastered

Answer: A

Explanation:

# Answer Area

Statements	Yes	No
If User1 signs in to Device1, Device1 will have both ConfigurationProfile1 and CompliancePolicy1 assigned.	<input type="radio"/>	<input checked="" type="radio"/>
If User2 signs in to Device2, Device2 will have both ConfigurationProfile1 and CompliancePolicy1 assigned.	<input type="radio"/>	<input checked="" type="radio"/>
If User3 signs in to Device3, Device3 will have both ConfigurationProfile1 and CompliancePolicy1 assigned.	<input type="radio"/>	<input checked="" type="radio"/>

## NEW QUESTION 48

- (Exam Topic 4)  
 You have a Microsoft 365 subscription.  
 You plan to use Windows Autopilot to provision 25 Windows 11 devices. You need to configure the Out-of-box experience (OOBE) settings.  
 What should you create in the Microsoft Intune admin center?

- A. an enrollment status page (ESP)
- B. a deployment profile
- C. a compliance policy
- D. a PowerShell script
- E. a configuration profile

Answer: B

## NEW QUESTION 53

- (Exam Topic 4)  
 You have the Microsoft Deployment Toolkit (MDT) installed in three sites as shown in the following table.

MDT instance name	Site	Default gateway
MDT1	New York	10.1.1.0/24
MDT2	London	10.5.5.0/24
MDT3	Dallas	10.4.4.0/24

You use Distributed File System (DFS) Replication to replicate images in a share named Production. You configure the following settings in the Bootstrap.ini file.



[Settings]

Priority=DefaultGateway, Default

[DefaultGateway]

10.1.1.1=NewYork

10.5.5.1=London

[NewYork]

DeployRoot=\\MDT1\Production\$

[London]

DeployRoot=\\MDT2\Production\$

KeyboardLocale=en-gb -

[Default]

DeployRoot=\\MDT3\Production\$

KeyboardLocale=en-us -

You plan to deploy Windows 10 to the computers shown in the following table.

Name	IP address
LT1	10.1.1.240
DT1	10.5.5.115
TB1	10.2.2.193

For each of the following statements, select Yes if the statement is true. Otherwise, select No.

NOTE: Each correct selection is worth one point.

Statements	Yes	No
TB1 will download the image from MDT3.	<input type="radio"/>	<input type="radio"/>
DT1 will have a KeyboardLocale of en-gb.	<input type="radio"/>	<input type="radio"/>
LT1 will download the image from MDT1.	<input type="radio"/>	<input type="radio"/>

- A. Mastered
- B. Not Mastered

Answer: A

Explanation:

Statements	Yes	No
TB1 will download the image from MDT3.	<input type="radio"/>	<input checked="" type="radio"/>
DT1 will have a KeyboardLocale of en-gb.	<input checked="" type="radio"/>	<input type="radio"/>
LT1 will download the image from MDT1.	<input checked="" type="radio"/>	<input type="radio"/>

**NEW QUESTION 56**

- (Exam Topic 3)

You need to prepare for the deployment of the Phoenix office computers. What should you do first?

- A. Extract the hardware ID information of each computer to a CSV file and upload the file from the Devices settings in Microsoft Store for Business.
- B. Generalize the computers and configure the Mobility (MDM and MAM) settings from the Azure Active Directory blade in the Azure portal.



- C. Generalize the computers and configure the Device settings from the Azure Active Directory blade in the Azure portal.  
D. Extract the hardware ID information of each computer to an XLSX file and upload the file from the Devices settings in Microsoft Store for Business.

**Answer:** A

**Explanation:**

References:

<https://docs.microsoft.com/en-us/microsoft-store/add-profile-to-devices#manage-autopilot-deployment-profiles>

**NEW QUESTION 57**

- (Exam Topic 3)

You need to prepare for the deployment of the Phoenix office computers. What should you do first?

- A. Generalize the computers and configure the Mobility (MDM and MAM) settings from the Azure Active Directory admin center.  
B. Extract the hardware ID information of each computer to a CSV file and upload the file from the Microsoft Intune blade in the Azure portal.  
C. Extract the hardware ID information of each computer to an XML file and upload the file from the Devices settings in Microsoft Store for Business.  
D. Extract the serial number information of each computer to a CSV file and upload the file from the Microsoft Intune blade in the Azure portal.

**Answer:** A

**Explanation:**

Reference:

<https://docs.microsoft.com/en-us/windows/deployment/windows-autopilot/existing-devices>

**NEW QUESTION 61**

- (Exam Topic 3)

You need a new conditional access policy that has an assignment for Office 365 Exchange Online. You need to configure the policy to meet the technical requirements for Group4.

Which two settings should you configure in the policy? To answer, select the appropriate settings in the answer area.

NOTE: Each correct selection is worth one point.

- A. Mastered  
B. Not Mastered

**Answer:** A

**Explanation:**

The policy needs to be applied to Group4 so we need to configure Users and Groups. The Access controls are set to Block access

A screenshot of a computer Description automatically generated

We therefore need to exclude compliant devices. From the scenario:

- Ensure that the users in a group named Group4 can only access Microsoft Exchange Online from devices that are enrolled in Intune.

Note: When a device enrolls in Intune, the device information is updated in Azure AD to include the device compliance status. This compliance status is used by conditional access policies to block or allow access to e-mail and other organization resources.

References:

<https://docs.microsoft.com/en-us/azure/active-directory/conditional-access/overview> <https://docs.microsoft.com/en-us/azure/active-directory/conditional-access/conditions> <https://docs.microsoft.com/en-us/intune/device-compliance-get-started>

**NEW QUESTION 65**

- (Exam Topic 3)

You are evaluating which devices are compliant.

For each of the following statements, select Yes if the statement is true. Otherwise, select No.

NOTE: Each correct selection is worth one point.

Statements	Yes	No
Device1 is compliant	<input type="radio"/>	<input type="radio"/>
Device3 is compliant	<input type="radio"/>	<input type="radio"/>
Device4 is compliant	<input type="radio"/>	<input type="radio"/>

- A. Mastered
- B. Not Mastered

Answer: A

Explanation:

Statements	Yes	No
Device1 is compliant	<input type="radio"/>	<input checked="" type="radio"/>
Device3 is compliant	<input checked="" type="radio"/>	<input type="radio"/>
Device4 is compliant	<input checked="" type="radio"/>	<input type="radio"/>

NEW QUESTION 66

- (Exam Topic 3)  
You need to meet the technical requirements for the iOS devices. Which object should you create in Intune?

- A. A compliance policy
- B. An app protection policy
- C. A Deployment profile
- D. A device configuration profile

Answer: D

Explanation:

References:  
<https://docs.microsoft.com/en-us/intune/device-restrictions-configure> <https://docs.microsoft.com/en-us/intune/device-restrictions-ios>

NEW QUESTION 68

- (Exam Topic 3)  
You need to meet the technical requirements for the new HR department computers.  
How should you configure the provisioning package? To answer, select the appropriate options in the answer area.  
NOTE: Each correct selection is worth one point.

Specify ComputerName as:

☒

"HR" + RAND(4)

"HumanResources-" + RAND(????)

HR-%RAND:4%

HR-????

HumanResources-%RAND:4%

Specify AccountOU as:

☒

CN=Computers, CN=HR, DC=Contoso, DC=com

Computers/HumanResources/Contoso.com

Contoso.com/HR/Computers

OU=Computers, OU=HR, DC=Contoso, DC=com

- A. Mastered
- B. Not Mastered

Answer: A

Explanation:

Reference:  
<https://docs.microsoft.com/en-us/windows/configuration/wcd/wcd-accounts>

NEW QUESTION 71

- (Exam Topic 2)  
What should you configure to meet the technical requirements for the Azure AD-joined computers?

- A. Windows Hello for Business from the Microsoft Intune blade in the Azure portal.
- B. The Accounts options in an endpoint protection profile.
- C. The Password Policy settings in a Group Policy object (GPO).
- D. A password policy from the Microsoft Office 365 portal.

Answer: A

Explanation:

References:  
<https://docs.microsoft.com/en-us/windows/security/identity-protection/hello-for-business/hello-manage-inorgani>

NEW QUESTION 74

- (Exam Topic 2)  
You need to meet the OOBE requirements for Windows AutoPilot.  
Which two settings should you configure from the Azure Active Directory blade? To answer, select the appropriate settings in the answer area.  
NOTE: Each correct selection is worth one point.

 Overview

Getting started

Manage

Users
Groups
Organizational relationships
Roles and administrators
Enterprise applications
Devices
App registrations
App registrations (Preview)
Application proxy
Licenses
Azure AD Connect
Custom domain names
Mobility (MDM and MAM)
Password reset
Company branding
User settings
Properties
Notifications settings

- A. Mastered
- B. Not Mastered

Answer: A

Explanation:

Reference:

<https://blogs.msdn.microsoft.com/sgern/2018/10/11/intune-intune-and-autopilot-part-3-preparing-your-environm>  
<https://blogs.msdn.microsoft.com/sgern/2018/11/27/intune-intune-and-autopilot-part-4-enroll-your-first-device/>

#### NEW QUESTION 75

- (Exam Topic 2)

You need to recommend a solution to meet the device management requirements.

What should you include in the recommendation? To answer, select the appropriate options in the answer area. NOTE: Each correct selection is worth one point.

**For the Research department employees:**

<input type="checkbox"/>
<input checked="" type="checkbox"/> An app configuration policy
<input checked="" type="checkbox"/> An app protection policy
<input checked="" type="checkbox"/> Azure information Protection
<input checked="" type="checkbox"/> iOS app provisioning profiles

**For the Sales department employees:**

<input type="checkbox"/>
<input checked="" type="checkbox"/> An app configuration policy
<input checked="" type="checkbox"/> An app protection policy
<input checked="" type="checkbox"/> Azure information Protection
<input checked="" type="checkbox"/> iOS app provisioning profiles

- A. Mastered
- B. Not Mastered

**Answer:** A

#### Explanation:

Reference:

<https://github.com/MicrosoftDocs/IntuneDocs/blob/master/intune/app-protection-policy.md>

<https://docs.microsoft.com/en-us/azure/information-protection/configure-usage-rights#do-not-forward-option-fo>

#### NEW QUESTION 80

- (Exam Topic 2)

You need to resolve the performance issues in the Los Angeles office.

How should you configure the update settings? To answer, select the appropriate options in the answer area. NOTE: Each correct selection is worth one point.

#### Answer Area

**Change Delivery Optimization  
download mode to:**

<input type="checkbox"/>
<input checked="" type="checkbox"/> Bypass mode
<input checked="" type="checkbox"/> HTTP blended with internet peering
<input checked="" type="checkbox"/> HTTP blended with peering behind same NAT
<input checked="" type="checkbox"/> Simple download mode with no peering

**Update Active Hours Start to:**

<input type="checkbox"/>
<input checked="" type="checkbox"/> 10 AM
<input checked="" type="checkbox"/> 11 AM
<input checked="" type="checkbox"/> 10 PM
<input checked="" type="checkbox"/> 11 PM

**Update Active Hours End to:**

<input type="checkbox"/>
<input checked="" type="checkbox"/> 10 AM
<input checked="" type="checkbox"/> 11 AM
<input checked="" type="checkbox"/> 10 PM
<input checked="" type="checkbox"/> 11 PM

- A. Mastered
- B. Not Mastered

**Answer:** A

#### Explanation:

A screenshot of a computer Description automatically generated with low confidence

Reference:

<https://docs.microsoft.com/en-us/windows/deployment/update/waas-delivery-optimization> <https://2pintsoftware.com/delivery-optimization-dl-mode/>

#### NEW QUESTION 85



- (Exam Topic 1)  
User1 and User2 plan to use Sync your settings.  
On which devices can the users use Sync your settings? To answer, select the appropriate options in the answer area.  
NOTE: Each correct selection is worth one point.

Answer Area

User1:

No devices

Device4 and Device5 only

Device1, Device2 and Device3 only

Device1, Device2, Device3, Device4, and Device5

User2:

No devices

Device4 and Device5 only

Device1, Device2 and Device3 only

Device1, Device2, Device3, Device4, and Device5

- A. Mastered
- B. Not Mastered

Answer: A

**Explanation:**  
Graphical user interface, text, application, email Description automatically generated  
Reference:  
<https://www.jeffgilb.com/managing-local-administrators-with-azure-ad-and-intune/>

NEW QUESTION 88

- (Exam Topic 1)  
For each of the following statements, select Yes if the statement is true. Otherwise, select No. NOTE: Each correct selection is worth one point.

Answer Area

Statements	Yes	No
If User1 adds a shortcut to the desktop of Device1, when User1 signs in to Device3, the same shortcut will appear on the desktop.	<input type="radio"/>	<input type="radio"/>
If User1 sets the desktop background to blue on Device2, when User1 signs in to Device4, the desktop background will be blue.	<input type="radio"/>	<input type="radio"/>
If User2 increases the size of the font in the command prompt of Device2, when User2 signs in to Device3, the command prompt will show the increased font size.	<input type="radio"/>	<input type="radio"/>

- A. Mastered
- B. Not Mastered

Answer: A

**Explanation:**  
Text, letter Description automatically generated

NEW QUESTION 90

- (Exam Topic 4)  
You have a Microsoft 365 E5 subscription. The subscription contains 25 computers that run Windows 11 and are enrolled in Microsoft Intune. You need to onboard the devices to Microsoft Defender for Endpoint. What should you create in the Microsoft Intune admin center?

- A. an attack surface reduction (ASR) policy
- B. a security baseline
- C. an endpoint detection and response (EDR) policy
- D. an account protection policy
- E. an antivirus policy

Answer: C

**Explanation:**  
To onboard the devices to Microsoft Defender for Endpoint, you need to create an endpoint detection and response (EDR) policy in the Microsoft Intune admin center. This policy enables EDR capabilities on devices that are enrolled in Intune and allows you to configure various settings for EDR functionality. You can then assign the policy to groups of users or devices. References:  
<https://docs.microsoft.com/en-us/mem/intune/protect/edr-windows>

NEW QUESTION 91

- (Exam Topic 4)

You have a Microsoft 365 E5 subscription that contains a user named User1 and a web app named Appl. App1 must only accept modern authentication requests. You plan to create a Conditional Access policy named CAPolicy1 that will have the following settings:

- Assignments
  - Users or workload identities: User1
  - Cloud apps or actions: App1
- Access controls
  - Grant: Block access

You need to block only legacy authentication requests to Appl. Which condition should you add to CAPolicy1?

- A. Filter for devices
- B. Device platforms
- C. User risk
- D. Sign-in risk
- E. Client apps

**Answer: E**

**Explanation:**

you can use the client apps condition to block legacy authentication requests to App11. Legacy authentication is a term that refers to authentication protocols that do not support modern authentication features such as multi-factor authentication or conditional access2. Examples of legacy authentication protocols include Basic Authentication, Digest Authentication, NTLM, and Kerberos2. To block legacy authentication requests, you need to configure the client apps condition to include Other clients, which covers any client that uses legacy authentication protocols13. References: 1: Conditional Access: Block legacy authentication | Microsoft Learn <https://learn.microsoft.com/en-us/mem/identity-protection/conditional-access/block-legacy-authentication> 2: What is legacy authentication? | Microsoft Learn <https://learn.microsoft.com/en-us/mem/identity-protection/conditional-access/legacy-authentication> 3: Client apps condition in Azure Active Directory Conditional Access | Microsoft Learn <https://learn.microsoft.com/en-us/mem/identity-protection/conditional-access/client-apps-condition>

**NEW QUESTION 94**

- (Exam Topic 4)

You have a Microsoft 365 subscription.

You have 10 computers that run Windows 10 and are enrolled in mobile device management (MDM). You need to deploy the Microsoft 36S Apps for enterprise suite to all the computers.

What should you do?

- A. From the Microsoft Intune admin center, create a Windows 10 device profile.
- B. From Azure AD, add an app registration.
- C. From Azure A
- D. add an enterprise application.
- E. From the Microsoft Intune admin center, add an app.

**Answer: D**

**Explanation:**

To deploy Microsoft 365 Apps for enterprise to Windows 10 devices that are enrolled in Intune, you need to add an app of type “Windows 10 app (Win32)” in the Microsoft Intune admin center and configure the app settings. You can then assign the app to groups of users or devices. References: <https://docs.microsoft.com/en-us/mem/intune/apps/apps-win32-app-management>

**NEW QUESTION 98**

- (Exam Topic 4)

You have a Microsoft 365 subscription that uses Microsoft Intune Suite. You use Microsoft Intune to manage devices. Azure AD joined Windows devices enroll automatically in Intune. You have the devices shown in the following table.

Name	Operating system	Azure AD joined	Line-of-business (LOB) apps installed
Device1	64-bit version of Windows 10 Pro	Yes	No
Device2	32-bit version of Windows 10 Pro	No	Yes
Device3	64-bit version of Windows 10 Pro	No	Yes

You are preparing to upgrade the devices to Windows 11. All the devices are compatible with Windows 11. You need to evaluate Windows Autopilot and in-place upgrade as deployment methods to implement

Windows 11 Pro on the devices, while retaining all user settings and applications.

Which devices can be upgraded by using each method? To answer, select the appropriate options in the answer area.

NOTE: Each correct selection is worth one point.

Answer Area

Windows Autopilot: 

Device1 and Device3 only  
None of the devices  
Device1 only  
Device1 and Device3 only  
Device1, Device2, and Device3

In-place upgrade: 

Device1 and Device3 only  
None of the devices  
Device1 only  
Device1 and Device3 only  
Device1, Device2, and Device3

- A. Mastered
- B. Not Mastered

Answer: A

Explanation:  
Answer Area

Windows Autopilot: 

Device1 and Device3 only  
None of the devices  
Device1 only  
Device1 and Device3 only  
Device1, Device2, and Device3

In-place upgrade: 

Device1 and Device3 only  
None of the devices  
Device1 only  
Device1 and Device3 only  
Device1, Device2, and Device3

NEW QUESTION 101

- (Exam Topic 4)

You have a Microsoft 365 subscription that uses Microsoft Intune Suite. You use Microsoft Intune to manage devices.

You need to configure an update ring that meets the following requirements:

- Fixes and improvements to existing Windows functionality can be deferred for 14 days but will install automatically seven days after that date.
- The installation of new Windows features can be deferred for 90 days but will install automatically 10 days after that date.
- Devices must restart automatically three days after an update is installed.

How should you configure the update ring? To answer, select the appropriate options in the answer area. NOTE: Each correct selection is worth one point.

Answer Area

Feature update deferral period (days): 

90  
3  
7  
10  
14  
90

Quality update deferral period (days): 

14  
3  
7  
10  
14  
90

Grace period: 

7  
3  
7  
10  
14  
90

- A. Mastered
- B. Not Mastered

Answer: A

Explanation:  
Answer Area

Feature update deferral period (days):  

3

7

10

14

90

Quality update deferral period (days):  

3

7

10

14

90

7

3

7

10

14

90

Grace period:  

3

7

10

14

90

NEW QUESTION 105

- (Exam Topic 4)  
You have 1,000 computers that run Windows 10 and are members of an Active Directory domain. You need to capture the event logs from the computers to Azure.  
What should you do? To answer, select the appropriate options in the answer area. NOTE: Each correct selection is worth one point.

Answer Area

Azure service to provision:

An Azure Storage account

Azure Cosmos DB

Azure SQL Database

Log Analytics

Action to perform on the computers:

Create a collector-initiated subscription

Install the Microsoft Monitoring Agent

Enroll in Microsoft Intune

Register to Azure Active Directory (Azure AD)

- A. Mastered
- B. Not Mastered

Answer: A

Explanation:



## Answer Area

Azure service to provision:

<input type="checkbox"/>
<input type="checkbox"/>
<input type="checkbox"/>
<input checked="" type="checkbox"/>

Action to perform on the computers:

<input type="checkbox"/>
<input type="checkbox"/>
<input checked="" type="checkbox"/>
<input type="checkbox"/>
<input type="checkbox"/>

## NEW QUESTION 109

- (Exam Topic 4)

You have a Microsoft 365 tenant and an internal certification authority (CA).

You need to use Microsoft Intune to deploy the root CA certificate to managed devices.

Which type of Intune policy and profile should you use? To answer, select the appropriate options in the answer area.

NOTE: Each correct selection is worth one point.

## Answer Area

Policy type:

<input type="checkbox"/>
<input type="checkbox"/>
<input type="checkbox"/>
<input type="checkbox"/>
<input type="checkbox"/>

Profile:

<input type="checkbox"/>
<input type="checkbox"/>
<input type="checkbox"/>
<input type="checkbox"/>
<input type="checkbox"/>

- A. Mastered
- B. Not Mastered

**Answer:** A

### Explanation:

Box 1: Configuration profile Create a trusted certificate profile. Box 2: Trusted certificate

When using Intune to provision devices with certificates to access your corporate resources and network, use a trusted certificate profile to deploy the trusted root certificate to those devices. Trusted root certificates establish a trust from the device to your root or intermediate (issuing) CA from which the other certificates are issued.

Reference: <https://docs.microsoft.com/en-us/mem/intune/protect/certificates-trusted-root>

## NEW QUESTION 111

- (Exam Topic 4)

You have two computers that run Windows 10. The computers are enrolled in Microsoft Intune as shown in the following table.

Name	Member of
Computer1	Group1
Computer2	Group1, Group2

Windows 10 update rings are defined in Intune as shown in the following table.

Name	Quality deferral (days)	Assigned
Ring1	3	Yes
Ring2	10	Yes

You assign the update rings as shown in the following table.

Name	Include	Exclude
Ring1	Group1	Group2
Ring2	Group2	Group1

What is the effect of the configurations on Computer1 and Computer2? To answer, select the appropriate options in the answer area.  
NOTE: Each correct selection is worth one point.

Quality deferral on Computer1:

▼

3 days

7 days

10 days

13 days

No effect

Quality deferral on Computer2:

▼

3 days

7 days

10 days

13 days

No effect

- A. Mastered
- B. Not Mastered

Answer: A

Explanation:

A screenshot of a computer Description automatically generated  
Computer1 and Computer2 are members of Group1. Ring1 is applied to Group1.  
Note: The term "Exclude" is misleading. It means that the ring is not applied to that group, rather than that group being blocked.  
References:  
<https://docs.microsoft.com/en-us/windows/deployment/update/waas-wufb-intune> <https://allthingscloud.blog/configure-windows-update-business-using-microsoft-intune/>

NEW QUESTION 113

- (Exam Topic 4)  
You have a Microsoft 365 subscription that contains a user named User1. The subscription contains devices enrolled in Microsoft intune as shown in the following table.

Name	Platform	Member of	Description
Device1	Windows 11	Group1	Disk encryption is not configured.
Device2	Windows 10	Group2	Disk encryption is configured.
Device3	Android	Group3	Device local storage is not encrypted.

Microsoft Edge is available on all the devices.  
Intune has the device compliance policies shown in the following table.

Name	Platform	Setting	Applied to
Compliance1	Windows 10 and later	Require encryption of data storage on device	Group2
Compliance2	Android Enterprise	Require encryption of data storage on device	Group3

The Compliance policy settings are configured as shown in the exhibit. (Click the Exhibit tab.) You create the following Conditional Access policy:

## Compliance policies | Compliance policy settings

Save Discard

These settings configure the way the compliance service treats devices. Each device evaluates these as a "Built-in Device Compliance Policy", which is reflected in device monitoring.

Mark devices with no compliance policy assigned as ☒ Compliant

Enhanced jailbreak detection ☐ Disabled

Compliance status validity period (days)

- Name: Policy1
- Assignments
  - o Users and groups: User1
  - o Cloud apps or actions: Office 365 SharePoint Online
- Access controls
  - o Grant Require device to be marked as compliant
- Enable policy: On

For each of the following statements, select Yes if the statement is true. Otherwise, select No. NOTE: Each correct selection is worth one point.

### Answer Area

Statements	Yes	No
User1 can access Microsoft SharePoint Online from Device1 by using Microsoft Edge.	<input type="radio"/>	<input type="radio"/>
User1 can access Microsoft SharePoint Online from Device2 by using Microsoft Edge.	<input type="radio"/>	<input type="radio"/>
User1 can access Microsoft SharePoint Online from Device3 by using Microsoft Edge.	<input type="radio"/>	<input type="radio"/>

- A. Mastered
- B. Not Mastered

**Answer: A**

### Explanation:

#### Answer Area

Statements	Yes	No
User1 can access Microsoft SharePoint Online from Device1 by using Microsoft Edge.	<input type="radio"/>	<input checked="" type="radio"/>
User1 can access Microsoft SharePoint Online from Device2 by using Microsoft Edge.	<input checked="" type="radio"/>	<input type="radio"/>
User1 can access Microsoft SharePoint Online from Device3 by using Microsoft Edge.	<input type="radio"/>	<input checked="" type="radio"/>

### NEW QUESTION 117

- (Exam Topic 4)

You have devices enrolled in Microsoft Intune as shown in the following table.

Name	Platform	Encryption	Secure Boot	Member of
Device1	Windows 10	Yes	No	Group1
Device2	Windows 10	No	Yes	Group2
Device3	Android	No	Not applicable	Group3

Intune includes the device compliance policies shown in the following table.

Name	Platform	Encryption	Secure Boot
Policy1	Windows 10	Not configured	Not configured
Policy2	Windows 10	Not configured	Required
Policy3	Windows 10	Required	Required
Policy4	Android	Not configured	Not applicable

The device compliance policies have the assignments shown in the following table.

Name	Assigned to
Policy1	Group1
Policy2	Group1, Group2
Policy3	Group3
Policy4	Group3

For each of the following statements, select Yes if the statement is true. Otherwise, select No. NOTE: Each correct selection is worth one point.

Answer Area

Statements	Yes	No
Device1 is marked as compliant.	<input type="radio"/>	<input type="radio"/>
Device2 is marked as compliant.	<input type="radio"/>	<input type="radio"/>
Device3 is marked as compliant.	<input type="radio"/>	<input type="radio"/>

- A. Mastered
- B. Not Mastered

Answer: A

Explanation:

Device1 is marked as compliant = No Device2 is marked as compliant = Yes Device3 is marked as comp  
= No

- Device1 is marked as noncompliant because it does not meet the minimum OS version requirement of Policy1, which is 11.0.0. Device1 has an OS version of 10.0.0, which is lower than the required version1.
- Device2 is marked as compliant because it meets all the requirements of Policy2, which are: minimum OS version of 10.0.0, password required, and encryption enabled. Device2 has an OS version of 11.0.0, a password set, and encryption enabled1.
- Device3 is marked as noncompliant because it does not meet the encryption requirement of Policy3, which is enabled. Device3 has encryption disabled1.

NEW QUESTION 121

- (Exam Topic 4)

Your company uses Microsoft Intune.

More than 500 Android and iOS devices are enrolled in the Intune tenant.

You plan to deploy new Intune policies. Different policies will apply depending on the version of Android or iOS installed on the device.

You need to ensure that the policies can target the devices based on their version of Android or iOS. What should you configure first?

- A. groups that have dynamic membership rules in Azure AD
- B. Device categories in Intune
- C. Corporate device identifiers in Intune
- D. Device settings in Azure AD

Answer: B

NEW QUESTION 126

- (Exam Topic 4)

You have a Microsoft 365 tenant.

You have devices enrolled in Microsoft Intune.

You assign a conditional access policy named Policy1 to a group named Group1. Policy1 restricts devices marked as noncompliant from accessing Microsoft OneDrive for Business.

You need to identify which noncompliant devices attempt to access OneDrive for Business. What should you do?

- A. From the Microsoft Entra admin center, review the Conditional Access Insights and Reporting workbook.
- B. From the Microsoft Intune admin center, review Device compliance report.
- C. From the Microsoft Intune admin center, review the Noncompliant devices report.
- D. From the Microsoft Intune admin center, review the Setting compliance report.

Answer: C



### NEW QUESTION 131

- (Exam Topic 4)

You have a Microsoft 365 E5 subscription that contains a group named Group1.

You create a Conditional Access policy named CAPolicy1 and assign CAPolicy1 to Group1.

You need to configure CAPolicy1 to require the members of Group1 to reauthenticate every eight hours when they connect to Microsoft Exchange Online.

What should you configure?

- A. Session access controls
- B. an assignment that uses a User risk condition
- C. an assignment that uses a Sign-in risk condition
- D. Grant access controls

**Answer: A**

#### Explanation:

User sign-in frequency

Sign-in frequency defines the time period before a user is asked to sign in again when attempting to access a resource.

The Azure Active Directory (Azure AD) default configuration for user sign-in frequency is a rolling window of 90 days.

Sign-in frequency control

- > Sign in to the Azure portal as a global administrator, security administrator, or Conditional Access administrator.
- > Browse to Azure Active Directory > Security > Conditional Access.
- > Select New policy.
- > Give your policy a name. We recommend that organizations create a meaningful standard for the names of their policies.
- > Choose all required conditions for customer's environment, including the target cloud apps.
- > Under Access controls > Session.

Select Sign-in frequency.

Choose Periodic reauthentication and enter a value of hours or days or select Every time.

- > Save your policy. Reference:

<https://docs.microsoft.com/en-us/azure/active-directory/conditional-access/howto-conditional-access-session-life>

### NEW QUESTION 134

- (Exam Topic 4)

You use a Microsoft Intune subscription to manage iOS devices.

You configure a device compliance policy that blocks jailbroken iOS devices. You need to enable Enhanced jailbreak detection.

What should you configure?

- A. the Compliance policy settings
- B. the device compliance policy
- C. a network location
- D. a configuration profile

**Answer: D**

### NEW QUESTION 139

- (Exam Topic 4)

You have a Microsoft 365 subscription that uses Microsoft Intune. You plan to manage Windows updates by using Intune.

You create an update ring for Windows 10 and later and configure the User experience settings for the ring as shown in the following exhibit.

**User experience settings**

Automatic update behavior ⓘ	Auto install and restart at maintenance time
Active hours start * ⓘ	8 AM
Active hours end * ⓘ	5 PM
Restart checks ⓘ	<input checked="" type="button" value="Allow"/> <input type="button" value="Skip"/>
Option to pause Windows updates ⓘ	<input checked="" type="button" value="Enable"/> <input type="button" value="Disable"/>
Option to check for Windows updates ⓘ	<input checked="" type="button" value="Enable"/> <input type="button" value="Disable"/>
Change notification update level ⓘ	Use the default Windows Update notifications
Use deadline settings ⓘ	<input checked="" type="button" value="Allow"/> <input type="button" value="Not configured"/>
Deadline for feature updates ⓘ	5 <input checked="" type="checkbox"/>
Deadline for quality updates ⓘ	2 <input checked="" type="checkbox"/>
Grace period ⓘ	1 <input checked="" type="checkbox"/>
Auto reboot before deadline ⓘ	<input checked="" type="button" value="Yes"/> <input type="button" value="No"/>

Use the drop-down menus to select the answer choice that completes each statement based on the information presented in the graphic.

NOTE: Each correct selection is worth one point.

**Answer Area**

Automatic restarts are blocked [answer choice].

between 8 AM and 5 PM

before 8 AM

between 8 AM and 5 PM

after 5 PM

A restart will be forced on a device [answer choice] after the deadline.

5 days

1 day

2 days

5 days

- A. Mastered
- B. Not Mastered

**Answer:** A

**Explanation:**  
**Answer Area**

Automatic restarts are blocked [answer choice].

between 8 AM and 5 PM

before 8 AM

between 8 AM and 5 PM

after 5 PM

A restart will be forced on a device [answer choice] after the deadline.

5 days

1 day

2 days

5 days

**NEW QUESTION 144**

- (Exam Topic 4)  
 You have a Microsoft 365 E5 subscription that contains the users shown in the following table.

Name	Role
Admin1	Application admin
Admin2	Cloud application admin
Admin3	Office apps admin
Admin4	Security admin

In the Microsoft 365 Apps admin center, you create a Microsoft Office customization. Which users can download the Office customization file from the admin center?

- A. Admin1, Admin2, Admin3. and Admin4
- B. Admin1, Admin2, and Admin3 only
- C. Admin3 only
- D. Admin3 and Admin4 only
- E. Admin1 and Admin3 only

**Answer:** B

**Explanation:**  
 \* Admin1  
 An application admin has full access to enterprise applications, applications registrations, and application proxy settings.  
 \* Admin2  
 Mark your app as publisher verified.  
 In Azure AD this user must be a member of one of the following roles: Application Admin, Cloud Application Admin, or Global Admin.  
 \* Admin3  
 Office Apps admin - Assign the Office Apps admin role to users who need to do the following:  
 - Use the Office cloud policy service to create and manage cloud-based policies for Office  
 - Create and manage service requests  
 - Manage the What's New content that users see in their Office apps  
 - Monitor service health Reference:  
 Office Apps admin - Assign the Office Apps admin role to users who need to do the following <https://docs.microsoft.com/en-us/azure/active-directory/develop/mark-app-as-publisher-verified>

**NEW QUESTION 146**

- (Exam Topic 4)  
 You have an Azure AD tenant named contoso.com.  
 You have a workgroup computer named Computer1 that runs Windows 11. You need to add Computer1 to contoso.com.  
 What should you use?

- A. dsreecmd.exe
- B. Computer Management

- C. netdom.exe
- D. the Settings app

**Answer:** A

#### NEW QUESTION 150

- (Exam Topic 4)

You have a Microsoft 365 subscription that uses Microsoft Intune and contains 100 Windows 10 devices. You need to create Intune configuration profiles to perform the following actions on the devices:

- Deploy a custom Start layout.
- Rename the local Administrator account.

Which profile type template should you use for each action? To answer, select the appropriate options in the answer area. NOTE: Each correct selection is worth one point.

#### Answer Area

Deploy a custom Start layout:	<div>Device restriction</div> <div>Delivery optimization</div> <div>Device restriction</div> <div>Endpoint protection</div> <div>Identity protection</div>
Rename the local Administrator account:	<div>Identity protection</div> <div>Delivery optimization</div> <div>Device restriction</div> <div>Endpoint protection</div> <div>Identity protection</div>

- A. Mastered
- B. Not Mastered

**Answer:** A

**Explanation:**

#### Answer Area

Deploy a custom Start layout:	<div>Device restriction</div> <div>Delivery optimization</div> <div>Device restriction</div> <div>Endpoint protection</div> <div>Identity protection</div>
Rename the local Administrator account:	<div>Identity protection</div> <div>Delivery optimization</div> <div>Device restriction</div> <div>Endpoint protection</div> <div>Identity protection</div>

#### NEW QUESTION 152

- (Exam Topic 4)

You have a Microsoft 365 E5 subscription that contains 500 macOS devices enrolled in Microsoft Intune. You need to ensure that you can apply Microsoft Defender for Endpoint antivirus policies to the macOS devices. The solution must minimize administrative effort.

What should you do?

- A. Onboard the macOS devices to the Microsoft Purview compliance portal.
- B. From the Microsoft Intune admin center, create a security baseline.
- C. Install Defender for Endpoint on the macOS devices.
- D. From the Microsoft Intune admin center, create a configuration profile.

**Answer:** C

**Explanation:**

To apply Microsoft Defender for Endpoint antivirus policies to the macOS devices, you need to install Defender for Endpoint on the devices. You can use Intune to deploy a script that installs Defender for Endpoint on macOS devices. After installation, you can use Intune to create and assign antivirus policies to the devices.

References:

<https://docs.microsoft.com/en-us/windows/security/threat-protection/microsoft-defender-atp/mac-install-with-int>

#### NEW QUESTION 154

- (Exam Topic 4)



You have an on-premises server named Server1 that hosts a Microsoft Deployment Toolkit (MDT) deployment share named MDT1. You need to ensure that MDT1 supports multicast deployments. What should you install on Server1?

- A. Multipath I/O (MPIO)
- B. Multipoint Connector
- C. Windows Deployment Services (WDS)
- D. Windows Server Update Services (WSUS)

**Answer:** C

**NEW QUESTION 157**

- (Exam Topic 4)

You have a Microsoft 365 E5 subscription that uses Microsoft Intune. The subscription contains the users shown in the following table.

Name	Member of
User1	Group1, Group2
User2	Group2
User3	Group3

Group2 and Group3 are members of Group1. All the users use Microsoft Excel.

From the Microsoft Endpoint Manager admin center, you create the policies shown in the following table.

Name	Type	Priority	Assigned to	Default file format for Excel
Policy1	Policies for Office apps	0	Group1	OpenDocument Spreadsheet (*.ods)
Policy2	Policies for Office apps	1	Group2	Excel Binary Workbook (*.xlsb)

For each of the following statements, select Yes if the statement is true. Otherwise, select No.

NOTE: Each correct selection is worth one point.

**Answer Area**

Statements	Yes	No
When User1 saves a new spreadsheet, the .ods format is used.	<input type="radio"/>	<input type="radio"/>
When User2 saves a new spreadsheet, the .xlsb format is used.	<input type="radio"/>	<input type="radio"/>
When User3 saves a new spreadsheet, the .xlsx format is used.	<input type="radio"/>	<input type="radio"/>

- A. Mastered
- B. Not Mastered

**Answer:** A

**Explanation:**

Box 1: No

User1 is member of Group1 and Group2.

Policy1 with priority 0 is assigned to Group1: default file format for Excel is.ods. Policy2 with priority 1 is assigned to Group2: default file format for Excel is.xlsb.

Note: Key points to remember about policy order

Policies are assigned an order of priority. Devices receive the first applied policy only.

You can change the order of priority for policies. Default policies are given the lowest order of priority. Box 2: Yes

User2 is member of Group2.

Group2 and Group3 are members of Group1. Box 3: No

User3 is member of Group3.

Group2 and Group3 are members of Group1.

Reference: <https://learn.microsoft.com/en-us/microsoft-365/security/defender-business/mdb-policy-order>

**NEW QUESTION 158**

- (Exam Topic 4)

You use the Microsoft Deployment Toolkit (MDT) to deploy Windows 11.

You create a new task sequence by using the Standard Client Task Sequence template to deploy Windows 11 Enterprise to new computers. The computers have a single hard disk.

You need to modify the task sequence to create a system volume and a data volume.

Which phase should you modify in the task sequence?



- A. Initialization
- B. State Restore
- C. Preinstall
- D. Postinstall

**Answer: C**

#### NEW QUESTION 160

- (Exam Topic 4)

You have a Microsoft 365 subscription.

You have devices enrolled in Microsoft Intune as shown in the following table. To which devices can you deploy apps by using Intune?

- A. Device1 only
- B. Device1 and Device2 only
- C. Device1 and Device3 only
- D. Device1, Device2, and Device3 only
- E. Device1, Device2, Device3, and Device4

**Answer: E**

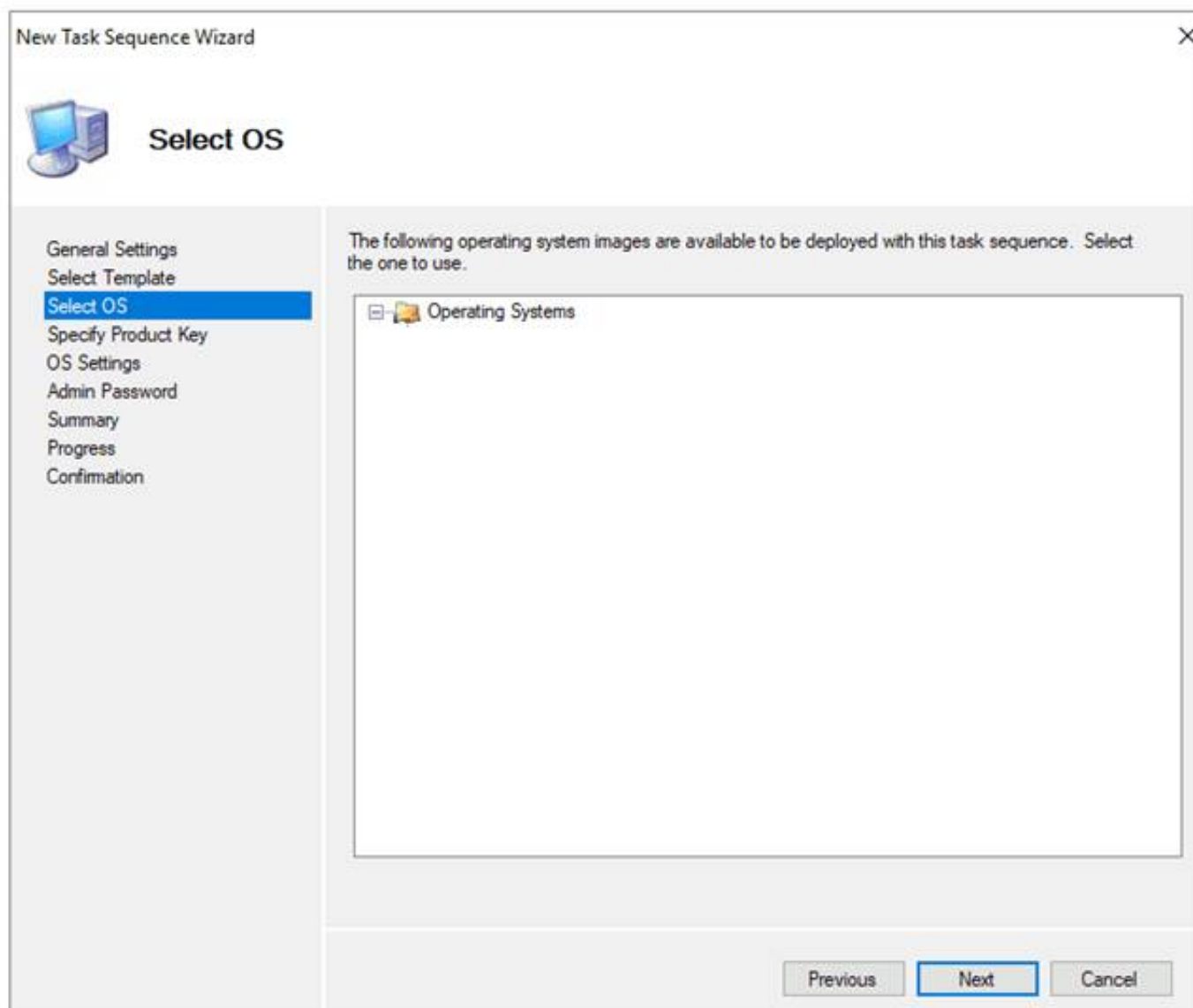
#### NEW QUESTION 163

- (Exam Topic 4)

You have a Microsoft Deployment Toolkit (MDT) deployment share.

From the Deployment Workbench, you open the New Task Sequence Wizard and select the Standard Client Upgrade Task Sequence task sequence template.

You discover that there are no operating system images listed on the Select OS page as shown in the following exhibit.



You need to be able to select an operating system image to perform a Windows 11 in-place upgrade. What should you do?

- A. Enable monitoring for the deployment share.
- B. Import a full set of source files.
- C. Import a custom image file.
- D. Run the Update Deployment Share Wizard

**Answer: D**

#### NEW QUESTION 165

- (Exam Topic 4)

You have a Microsoft 365 subscription that uses Microsoft Intune Suite.

You use Microsoft Intune to manage devices. All devices are in the same time zone. You create an update rings policy and assign the policy to all Windows devices.

On the November 1, you pause the update rings policy. All devices remain online.

Without further modification to the policy, on which date will the devices next attempt to update?

- A. December 1
- B. December 6
- C. November 15
- D. November 22

Answer: C

NEW QUESTION 170

- (Exam Topic 4)

Your network contains an Active Directory domain. The domain contains 2,000 computers that run Windows 10. You implement hybrid Azure AD and Microsoft Intune.  
You need to automatically register all the existing computers to Azure AD and enroll the computers in Intune. The solution must minimize administrative effort.  
What should you use?

- A. an Autodiscover address record
- B. a Group Policy object (GPO)
- C. an Autodiscover service connection point (SCP)
- D. a Windows Autopilot deployment profile

Answer: D

NEW QUESTION 174

- (Exam Topic 4)

You have a Hyper-V host that contains the virtual machines shown in the following table.

Name	Generation	Virtual processors	Memory
VM1	1	4	16 GB
VM2	2	1	8 GB
VM3	2	2	4 GB

On which virtual machines can you install Windows 11?

- A. VM1 only
- B. VM3only
- C. VM1 and VM2 only
- D. VM2 and VM3 only
- E. VM1, VM2, and VM3

Answer: E

NEW QUESTION 179

- (Exam Topic 4)

You have a Microsoft 365 subscription. The subscription contains computers that run Windows 11 and are enrolled in Microsoft Intune. You need to create a compliance policy that meets the following requirements:

- Requires BitLocker Drive Encryption (BitLocker) on each device
- Requires a minimum operating system version

Which setting of the compliance policy should you configure for each requirement? To answer, drag the appropriate settings to the correct requirements. Each setting may be used once, more than once, or not at all. You may need to drag the split bar between panes or scroll to view content.  
NOTE: Each correct selection is worth one point,

Settings

Device Health

Device Properties

Microsoft Defender for Endpoint

System Security

Answer Area

Requires BitLocker:

Requires a minimum operating system version:

- A. Mastered
- B. Not Mastered

Answer: A

Explanation:

Settings

Device Health

Device Properties

Microsoft Defender for Endpoint

System Security

Answer Area

Requires BitLocker: System Security

Requires a minimum operating system version: Device Properties

NEW QUESTION 184

- (Exam Topic 4)

You have a Microsoft 365 subscription.

You use Microsoft Intune Suite to manage devices.

You have the iOS app protection policy shown in the following exhibit.

Access requirements		
PIN for access	Require	
PIN type	Numeric	
Simple PIN	Allow	
Select minimum PIN length	6	
Touch ID instead of PIN for access (iOS 8+/iPadOS)	Allow	
Override biometrics with PIN after timeout	Require	
Timeout (minutes of inactivity)	30	
Face ID instead of PIN for access (iOS 11+/iPadOS)	Block	
PIN reset after number of days	No	
Number of days	0	
App PIN when device PIN is set	Require	
Work or school account credentials for access	Require	
Recheck the access requirements after (minutes of inactivity)	30	
Conditional launch		
Setting	Value	Action
Max PIN attempts	5	Reset PIN
Offline grace period	720	Block access (minutes)
Offline grace period	90	Wipe data (days)
Jailbroken/rooted devices		Block access

Use the drop-down menus to select the answer choice that completes each statement based on the information presented in the graphic. NOTE: Each correct selection is worth one point,

Answer Area

After 30 minutes of inactivity, a user will be prompted for their [answer choice].

PIN only

account credentials only

PIN only

PIN and account credentials

Entering the wrong PIN five times will [answer choice].

block access

block access

reset the app PIN

reset the device PIN

wipe company data

- A. Mastered
- B. Not Mastered

Answer: A

Explanation:

Box 1 = PIN only

Box 2 = reset the PIN app

iOS/iPadOS app protection policy settings - Microsoft Intune | Microsoft Learn <https://learn.microsoft.com/en-us/mem/intune/apps/app-protection-policy-settings-ios>

NEW QUESTION 188

- (Exam Topic 4)

You have a Microsoft 365 subscription that uses Microsoft Intune. You have five new Windows 11 Pro devices.

You need to prepare the devices for corporate use. The solution must meet the following requirements:

- Install Windows 11 Enterprise on each device.
- Install a Windows Installer (MSI) package named App1 on each device.
- Add a certificate named Certificate1 that is required by App1.
- Join each device to Azure AD.

Which three provisioning options can you use? Each correct answer presents a complete solution. NOTE: Each correct selection is worth one point.

- A. subscription activation
- B. a custom Windows image
- C. an in-place upgrade
- D. Windows Autopilot
- E. provisioning packages

**Answer:** BDE

**NEW QUESTION 193**

- (Exam Topic 4)

You have a Microsoft 365 subscription that includes Microsoft Intune.

You have an update ring named UpdateRing1 that contains the following settings:

- Automatic update behavior: Auto install and restart at a scheduled time
- Automatic behavior frequency: First week of the month
- Scheduled install day: Tuesday
- Scheduled install time: 3 AM

From the Microsoft Intune admin center, you select Uninstall for the feature updates of UpdateRing1. When will devices start to remove the feature updates?

- A. when a user approves the uninstall
- B. as soon as the policy is received
- C. next Tuesday
- D. the first Tuesday of the next month

**Answer:** C

**NEW QUESTION 194**

- (Exam Topic 4)

You have a Microsoft 365 E5 subscription that contains 100 Windows 10 devices enrolled in Microsoft Intune. You need to create Endpoint security policies to meet the following requirements:









- > Hide the Firewall & network protection area in the Windows Security app.
- > Disable the provisioning of Windows Hello for Business on the devices.

Which two policy types should you use? To answer, select the policies in the answer area.

NOTE: Each correct selection is worth one point.

**Answer Area**

**Manage**

	Antivirus
	Disk encryption
	Firewall
	Endpoint detection and response
	Attack surface reduction
	Account protection
	Device compliance
	Conditional access

- A. Mastered
- B. Not Mastered

**Answer:** A

**Explanation:**

Graphical user interface, application Description automatically generated

In the Antivirus policy settings, you can hide the Firewall and network protection area in the Windows Security app.

Windows Hello for Business settings are configured in Identity protection. Reference:

<https://docs.microsoft.com/en-us/mem/intune/protect/antivirus-security-experience-windows-settings> <https://docs.microsoft.com/en-us/mem/intune/protect/identity-protection-windows-settings>



NEW QUESTION 195

- (Exam Topic 4)

Your network contains an on-premises Active Directory domain and an Azure AD tenant.  
The Default Domain Policy Group Policy Object (GPO) contains the settings shown in the following table.

Name	GPO value
LockoutBadCount	0
MaximumPasswordAge	42
MinimumPasswordAge	1
MinimumPasswordLength	7
PasswordComplexity	True
PasswordHistorySize	24

Which device configuration profile type template should you use?

- A. Administrative Templates
- B. Endpoint protection
- C. Device restrictions
- D. Custom

Answer: A

Explanation:

To configure the settings shown in the table, you need to use the Administrative Templates device configuration profile type template. This template allows you to configure hundreds of settings that are also available in Group Policy. You can use this template to configure settings such as password policies, account lockout policies, and audit policies. References:  
<https://docs.microsoft.com/en-us/mem/intune/configuration/administrative-templates-windows>

NEW QUESTION 200

- (Exam Topic 4)

You have 200 computers that run Windows 10. The computers are joined to Azure AD and enrolled in Microsoft Intune. You need to set a custom image as the wallpaper and sign-in screen.

Which two settings should you configure in the Device restrictions configuration profile? To answer, select the appropriate settings in the answer area.

NOTE: Each correct selection is worth one point.

Answer Area

Device restrictions

Windows 10 and later

✓ Basics

2 Configuration settings

3 Assignments

4 Applicability Rules

5 Review + create

App Store

Cellular and connectivity

Cloud and Storage

Cloud Printer

Control Panel and Settings

Display

General

Locked Screen Experience ✓

Messaging

Microsoft Edge Browser

Network proxy

Password

Per-app privacy exceptions

Personalization ✓

Printer

Privacy

Projection

Previous

Next

- A. Mastered
- B. Not Mastered

Answer: A

Explanation:

Answer Area

Device restrictions

Windows 10 and later

✓ Basics

2 Configuration settings

3 Assignments

4 Applicability Rules

5 Review + create

✓ App Store

✓ Cellular and connectivity

✓ Cloud and Storage

✓ Cloud Printer

✓ Control Panel and Settings

✓ Display

✓ General

✓ Locked Screen Experience ✓

✓ Messaging

✓ Microsoft Edge Browser

✓ Network proxy

✓ Password

✓ Per-app privacy exceptions

✓ Personalization ✓

✓ Printer

✓ Privacy

✓ Projection

Previous

Next

NEW QUESTION 202

- (Exam Topic 4)

You have a Microsoft 365 E5 subscription and a computer that runs Windows 11. You need to create a customized installation of Microsoft 365 Apps for enterprise.

Which four actions should you perform in sequence? To answer, move the appropriate cmdlets from the list of cmdlets to the answer area and arrange them in the correct order.

Actions

Run setup.exe and specify the /packager switch.

Download the Microsoft Office Deployment Tool (ODT) and run the self-extracting executable (.exe) file.

Edit the XML configuration file.

Run setup.exe and specify the /download switch.

Run setup.exe and specify the /configure switch.

>

<

Answer Area

↑

↓

- A. Mastered
- B. Not Mastered

Answer: A

Explanation:

- \* 1. Download ODT application
- \* 2. Create a configuration file (XML)
- \* 3. setup.exe /download to download the installation files
- \* 4. setup.exe /configure to deploy the application

<https://learn.microsoft.com/en-us/deployoffice/deploy-microsoft-365-apps-local-source>

Passing Certification Exams Made Easy

visit - <https://www.surepassexam.com>

#### NEW QUESTION 206

- (Exam Topic 4)

You have computers that run Windows 10 and are managed by using Microsoft Intune. Users store their files in a folder named D:\Folder1.

You need to ensure that only a trusted list of applications is granted write access to D:\Folder1. What should you configure in the device configuration profile?

- A. Microsoft Defender Exploit Guard
- B. Microsoft Defender Application Guard
- C. Microsoft Defender SmartScreen
- D. Microsoft Defender Application Control

**Answer:** A

#### NEW QUESTION 211

- (Exam Topic 4)

You have a Microsoft Deployment Toolkit (MDT) deployment share named DS1. You import a Windows 11 image to DS1.

You have an executable installer for an application named App1.

You need to ensure that App1 will be installed for all the task sequences that deploy the image.

Which three actions should you perform in sequence? To answer, move the appropriate actions from the list of actions to the answer area and arrange them in the correct order.

**Actions**

- Modify a Windows 11 operating system setting.
- Modify a selection profile.
- Add App1 to DS1.
- Identify the GUID of App1.
- Modify CustomSettings.ini.

>

<

**Answer Area**

- 1 Add App1 to DS1.
- 2 Identify the GUID of App1.
- 3 Modify CustomSettings.ini.

- A. Mastered
- B. Not Mastered

**Answer:** A

#### Explanation:

MDT is a tool that allows you to automate the deployment of Windows operating systems and applications. To install an application for all the task sequences that deploy a Windows 11 image, you need to perform the following three actions in sequence:

> Add App1 to DS1. You can use the Deployment Workbench to import the executable installer of App1 to a folder in your deployment share. This will create an application entry with a unique GUID that identifies App1.

> Identify the GUID of App1. You can find the GUID of App1 by opening the application properties in the Deployment Workbench and looking at the Application GUID field1. You can copy the GUID to use it later.

> Modify CustomSettings.ini. You can edit the CustomSettings.ini file in your deployment share to specify which applications to install for each task sequence. You can use the Applications property to list the GUIDs of the applications you want to install, separated by commas1. For example, if you want to install App1 and another application with GUID {1234-5678-90AB-CDEF}, you can use this line:

Applications={GUID of App1},{1234-5678-90AB-CDEF}

These are the three actions you need to perform to ensure that App1 will be installed for all the task sequences that deploy the Windows 11 image from DS1. I hope this helps you.

If you want to learn more about MDT and how to deploy applications with it, you can check out these resources:

> How to deploy applications with the Microsoft Deployment Toolkit

#### NEW QUESTION 215

- (Exam Topic 4)

You have SOO Windows 10 devices enrolled in Microsoft Intune.

You plan to use Exploit protection in Microsoft Intune to enable the following system settings on the devices:

- Data Execution Prevention (DEP)
- Force randomization for images (Mandatory ASIR)

You need to configure a Windows 10 device that will be used to create a template file.

Which protection areas on the device should you configure in the Windows Security app before you create the template file? To answer, drag the appropriate protection areas to the correct settings. Each protection area may be used once, more than once, or not at all. You may need to drag the split bar between panes or scroll to view content.

NOTE: Each correct selection is worth one point.



Protection areas	Answer Area
Account protection	DEP: <input type="text"/>
App & browser control	Mandatory ASLR: <input type="text"/>
Device security	
Virus & threat protection	

- A. Mastered
- B. Not Mastered

**Answer:** A

**Explanation:**

Exploit protection is a feature that helps protect against malware that uses exploits to infect devices and spread. Exploit protection consists of many mitigations that can be applied to either the operating system or individual apps1.

To configure a Windows 10 device that will be used to create a template file for Exploit protection, you need to configure the following protection areas on the device in the Windows Security app:

- DEP: Device security. Data Execution Prevention (DEP) is a mitigation that prevents code from running in memory regions marked as non-executable. You can enable DEP system-wide or for specific apps in the Device security section of the Windows Security app1.
- Mandatory ASLR: App & browser control. Force randomization for images (Mandatory ASLR) is a mitigation that randomizes the location of executable images in memory, making it harder for attackers to predict where to inject code. You can enable Mandatory ASLR system-wide or for specific apps in the App & browser control section of the Windows Security app1.

**NEW QUESTION 216**

- (Exam Topic 4)

You have a Microsoft 365 subscription.

Users have iOS devices that are not enrolled in Microsoft 365 Device Management.

You create an app protection policy for the Microsoft Outlook app as shown in the exhibit. (Click the Exhibit tab.)

Dashboard > Client apps - App protection policies > Create policy > Settings

Create policy	Settings
<p><b>Name</b></p> <p>Policy1 ✓</p> <p>Description</p> <p><b>Platform</b></p> <p>iOS</p> <p>Target to all app types</p> <p>Yes No</p> <p><b>App types</b></p> <p>Apps on unmanaged devices</p> <p>Apps</p> <p>1 app selected</p> <p>Settings</p> <p>Default settings configured</p>	<p>Data protection</p> <p>Default settings configured</p> <p>Access requirements</p> <p>Default settings configured</p> <p>Conditional launch</p> <p>Default settings configured</p> <p>Scope (Tags)</p> <p>0 scope(s) selected</p>

You need to configure the policy to meet the following requirements:

- Prevent the users from using the Outlook app if the operating system version is less than 12.0.0.
- Require the users to use an alphanumeric passcode to access the Outlook app.

What should you configure in an app protection policy for each requirement? To answer, select the appropriate options in the answer area.

NOTE: Each correct selection is worth one point.



## Answer Area

Prevent the users from using Outlook if the operating system version is less than 12.0.0:

▼

Access requirements
Conditional launch
Data protection
Scope

Require the users to use an alphanumeric passcode to access Outlook:

▼

Access requirements
Conditional launch
Data protection
Scope

- A. Mastered
- B. Not Mastered

**Answer:** A

**Explanation:**

References:

<https://docs.microsoft.com/en-us/intune/app-protection-policy-settings-ios>

### NEW QUESTION 221

- (Exam Topic 4)

You have a Microsoft Deployment Toolkit (MDT) deployment share named DS1.

in the Out-of-Box Drivers node, you create folders that contain drivers for different hardware models.

You need to configure the Inject Drivers MDT task to use PnP detection to install the drivers for one of the hardware models.

What should you do first?

- A. Import an OS package.
- B. Create a selection profile.
- C. Add a Gather task to the task sequence.
- D. Add a Validate task to the task sequence.

**Answer:** B

### NEW QUESTION 224

- (Exam Topic 4)

You have a Microsoft 365 subscription that contains 500 computers that run Windows 11. The computers are Azure AD joined and are enrolled in Microsoft Intune.

You plan to manage Microsoft Defender Antivirus on the computers. You need to prevent users from disabling Microsoft Defender Antivirus, What should you do?

- A. From the Microsoft Intune admin center, create a security baseline.
- B. From the Microsoft 365 Defender portal, enable tamper protection.
- C. From the Microsoft Intune admin center, create an account protection policy.
- D. From the Microsoft Intune admin center, create an endpoint detection and response (EDR) policy.

**Answer:** B

**Explanation:**

Tamper protection is a feature of Microsoft Defender Antivirus that prevents users or malicious software from disabling or modifying the antivirus settings. Tamper protection can be enabled from the Microsoft 365 Defender portal for devices that are Azure AD joined and enrolled in Microsoft Intune. This will prevent users from turning off Microsoft Defender Antivirus or changing its configuration through Windows Security, PowerShell, Registry, or Group Policy. References: [Enable tamper protection]

### NEW QUESTION 225

- (Exam Topic 4)

Your network contains an on-premises Active Directory Domain Services (AD DS) domain that syncs with an Azure AD tenant. The tenant contains the users shown in the following table.

Name	Member of	On-premises sync
User1	Group1	Disabled
User2	Group2	Enabled

You assign Windows 10/11 Enterprise E5 licenses to Gtoup1 and Uset2. You deploy the devices shown in the following table.

Name	Operating system	Joined to
Device1	Windows 11 Pro	Azure AD
Device2	Windows 11 Pro	AD DS
Device3	Windows 10 Pro	Azure AD

For each of the following statements, select Yes if the statement is true. Otherwise, select No. NOTE: Each correct selection is worth one point.

Answer Area

Statements	Yes	No
If User1 signs in to Device1, Device1 is upgraded to Windows 11 Enterprise automatically.	<input type="radio"/>	<input type="radio"/>
If User2 signs in to Device2, Device2 is upgraded to Windows 11 Enterprise automatically.	<input type="radio"/>	<input type="radio"/>
If User2 signs in to Device3, Device3 is upgraded to Windows 11 Enterprise automatically.	<input type="radio"/>	<input type="radio"/>

- A. Mastered
- B. Not Mastered

Answer: A

Explanation:

Answer Area

Statements	Yes	No
If User1 signs in to Device1, Device1 is upgraded to Windows 11 Enterprise automatically.	<input type="radio"/>	<input checked="" type="radio"/>
If User2 signs in to Device2, Device2 is upgraded to Windows 11 Enterprise automatically.	<input checked="" type="radio"/>	<input type="radio"/>
If User2 signs in to Device3, Device3 is upgraded to Windows 11 Enterprise automatically.	<input type="radio"/>	<input checked="" type="radio"/>

NEW QUESTION 228

- (Exam Topic 4)

Your company standardizes on Windows 10 Enterprise for all users. Some users purchase their own computer from a retail store. The computers run Windows 10 Pro. You need to recommend a solution to upgrade the computers to Windows 10 Enterprise, join the computers to Azure AD, and install several Microsoft Store apps. The solution must meet the following requirements:

- Ensure that any applications installed by the users are retained.
- Minimize user intervention.

What is the best recommendation to achieve the goal? More than one answer choice may achieve the goal. Select the BEST answer.

- A. Windows Autopilot
- B. Microsoft Deployment Toolkit (MDT)
- C. a Windows Configuration Designer provisioning package
- D. Windows Deployment Services (WDS)

Answer: A

NEW QUESTION 231

- (Exam Topic 4)

Your network contains an Active Directory domain. The domain contains 1.000 computers that run Windows 11. You need to configure the Remote Desktop settings of all the computers. The solution must meet the following requirements:

- Prevent the sharing of clipboard contents.
- Ensure that users authenticate by using Network Level Authentication (NLA).

Which two nodes of the Group Policy Management Editor should you use? To answer, select the appropriate nodes in the answer area. NOTE: Each correct selection is worth one point.

Remote Desktop Session Host
Connections
Device and Resource Redirection
Licensing
Printer Redirection
Profiles
RD Connection Broker
Remote Session Environment ✓
Security ✓
Session Time Limits
Temporary folders

- A. Mastered
- B. Not Mastered

Answer: A

Explanation:

Remote Desktop Session Host
Connections
Device and Resource Redirection
Licensing
Printer Redirection
Profiles
RD Connection Broker
Remote Session Environment ✓
Security ✓
Session Time Limits
Temporary folders

NEW QUESTION 234

.....

## Thank You for Trying Our Product

### We offer two products:

1st - We have Practice Tests Software with Actual Exam Questions

2nd - Questions and Answers in PDF Format

### MD-102 Practice Exam Features:

- \* MD-102 Questions and Answers Updated Frequently
- \* MD-102 Practice Questions Verified by Expert Senior Certified Staff
- \* MD-102 Most Realistic Questions that Guarantee you a Pass on Your First Try
- \* MD-102 Practice Test Questions in Multiple Choice Formats and Updates for 1 Year

**100% Actual & Verified — Instant Download, Please Click**  
**[Order The MD-102 Practice Test Here](#)**