

HPE6-A72 Dumps

Aruba Certified Switching Associate Exam

<https://www.certleader.com/HPE6-A72-dumps.html>



NEW QUESTION 1

Refer to the exhibit.

```
Access-1# debug l2mac event
Access-1# debug destination buffer
Access-1# page
```

```
show debug buffer
-----
2020-05-06:22:32:52. 601427|12mac-mgrd|LOG_DEBUG|AMM|-|L2MAC|L2MAC_EVENT|macmgr_m
ac_manager_handle_mac_event(1311), MAC=00:50:79:66:68:01, VLAN=1, Port=1/1/1 is
trying to be inserted
2020-05-06:22:32:52. 602027|12mac-mgrd|LOG_DEBUG|AMM|-|L2MAC|L2MAC_EVENT|macmgr_m
ac_manager_handle_mac_event(1328), MAC=00:50:79:66:68:01 was successfully inserted
```

What command will display the debug l2mac events?

- A. show module L2MAC
- B. show debug terminal
- C. show debug buffer module L2MAC
- D. show debug all

Answer: C

NEW QUESTION 2

Refer to the exhibit.

```
Access-1(config-if)# show run int 1/1/1
interface 1/1/1
  no shutdown
  no routing
  vlan trunk native 1
  vlan trunk allowed all
  exit
Access-1(config-if)# vlan 100
Access-1(config-vlan-100)# exit
Access-1(config)#
```

What commands will successfully enable the SVI for vlan 100 on interface 1/1/1 to produce the results displayed in the command show ip interface brief in the exhibit below?

```
Access-1(config)# show ip interface brief
Interface                IP Address                Interface Status
                          link/admin
1/1/2                    No Address                down/down
1/1/3                    No Address                down/down
1/1/4                    No Address                down/down
1/1/5                    No Address                down/down
vlan100                  10.1.1.1/24              up/up
```

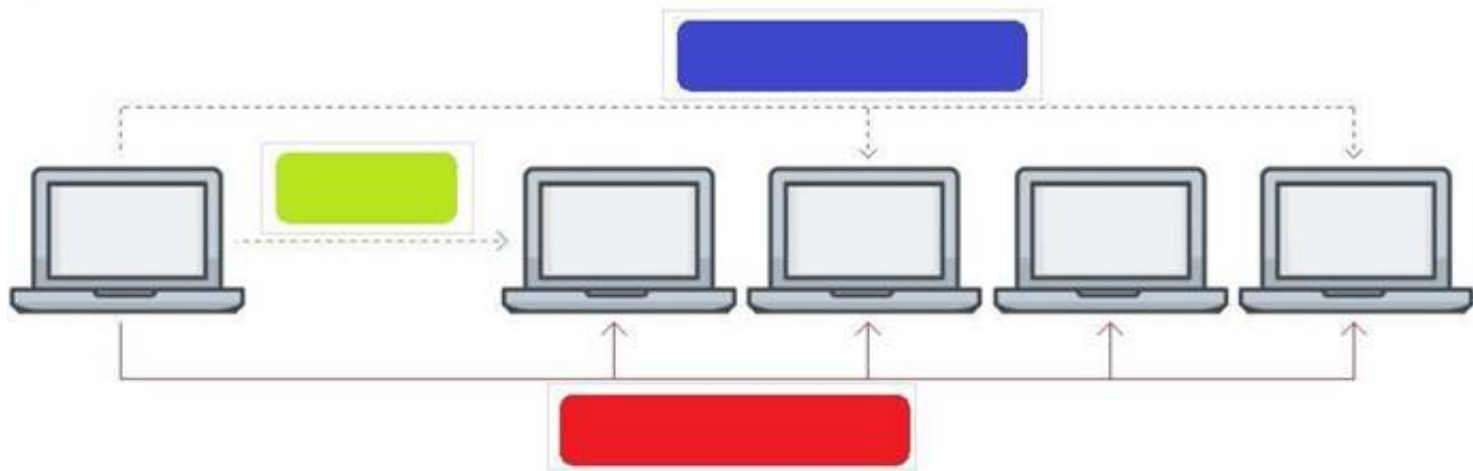
- A. Access-1(config)# interface 1/1/1 Access-1(config-if)# routingAccess-1(config-if)# interface vlan 100Access-1(config-if-vlan)# ip address 10.1.1.1/24
- B. Access-1(config)# interface 1/1/1Access-1(config-if)# vlan trunk permit vlan 100 Access-1(config-if)# interface vlan 100Access-1(config-if-vlan)# ip address static 10.1.1.1/24
- C. Access-1(config)# interface vlan 100Access-1(config-if-vlan)# ip address 10.1.1.1/24
- D. Access-1(config-if)# vlan 100Access-1(config-vlan)# ip address 10.1.1.1/24

Answer: C

NEW QUESTION 3

Click on the colored box that corresponds with the line that best represents Multicast traffic flow.

Answer Area



- A. Mastered
- B. Not Mastered

Answer: A

Explanation:

Diagram Description automatically generated
Blue Box

NEW QUESTION 4

Match the term to the correct description.

Term		Description
BGP		used for creating backup routes by implementing a higher administrative distance
Floating Static Routes		a distance vector protocol
OSPFv2		an ipv4 link-state routing protocol that runs within an Autonomous System
OSPFv3		used to route traffic between Autonomous Systems
RIPv2		a routing protocol capable of routing IPv6 packets

- A. Mastered
- B. Not Mastered

Answer: A

Explanation:

Term		Description
BGP	Floating Static Routes	used for creating backup routes by implementing a higher administrative distance
Floating Static Routes	RIPv2	a distance vector protocol
OSPFv2	OSPFv2	an ipv4 link-state routing protocol that runs within an Autonomous System
OSPFv3	BGP	used to route traffic between Autonomous Systems
RIPv2	OSPFv3	a routing protocol capable of routing IPv6 packets

NEW QUESTION 5

What is the process where a compute device converts logical data bits into the correct physical representation depending on the media?

- A. Demodulation
- B. Modulation
- C. Propagation
- D. Encapsulation

Answer: D

NEW QUESTION 6

What is the login and password combination is used when first configuring an Aruba OS-CX switch from factory defaults?

- A. Login admin and password field empty.
- B. Login admin and password forgetme!
- C. Login admin and password password.

Answer: B

NEW QUESTION 7

Place the OSI Layers in the correct order. Arrange them from least to greatest, starting with Layer 1 on the top, and progressing to Layer 7 on the bottom.

OSI Layer

Application Layer

Data Link Layer

Network Layer

Physical Layer

Presentation Layer

Session Layer

Transport Layer

Order

- A. Mastered
- B. Not Mastered

Answer: A

Explanation:

Graphical user interface, application Description automatically generated

NEW QUESTION 8

Match the available stacking feature to the correct AOS-CX switch model. Stacking features may be used more than once.

Stacking Feature

VSF

VSX

Answer Area

Stacking Feature

AOS-CX Switch Model

6300M

6300F

8320

8400

6400

- A. Mastered
- B. Not Mastered

Answer: A

Explanation:

Stacking Feature



Answer Area

Stacking Feature	AOS-CX Switch Model
VSF	6300M
VSF	6300F
VSX	8320
VSX	8400
VSX	6400

NEW QUESTION 9

Interface 1/1/1 is up
Admin state is up
Link transitions: 1
Description: TO_PC-1
Hardware: Ethernet, MAC Address: 00:11:22:33:44:55
MTU 1500
Type 1GbT
Full-duplex qos trust none
Speed 1000 Mb/s
Auto-negotiation is on Flow-control: off Error-control: off MDI mode: MDIX VLAN Mode: access Access VLAN: 1111
Which command will produce the above output?

- A. show interface vlan 1111
- B. show interface 1/1/1
- C. show interface gigabit 1/1/1
- D. show vlan 1111

Answer: B

NEW QUESTION 10

What are two methods for remotely managing an Aruba AOS-CX switch? (Choose two.)

- A. SNMPv2c
- B. HTTPS
- C. USB-C console
- D. Telnet
- E. SSH

Answer: BE

NEW QUESTION 10

Which two types of routes can be found in the IP routing table of an Aruba AOS-CX switch? (Choose two.)

- A. Local
- B. EIGRP
- C. BGP
- D. ISIS
- E. RIPng

Answer: AC

NEW QUESTION 13

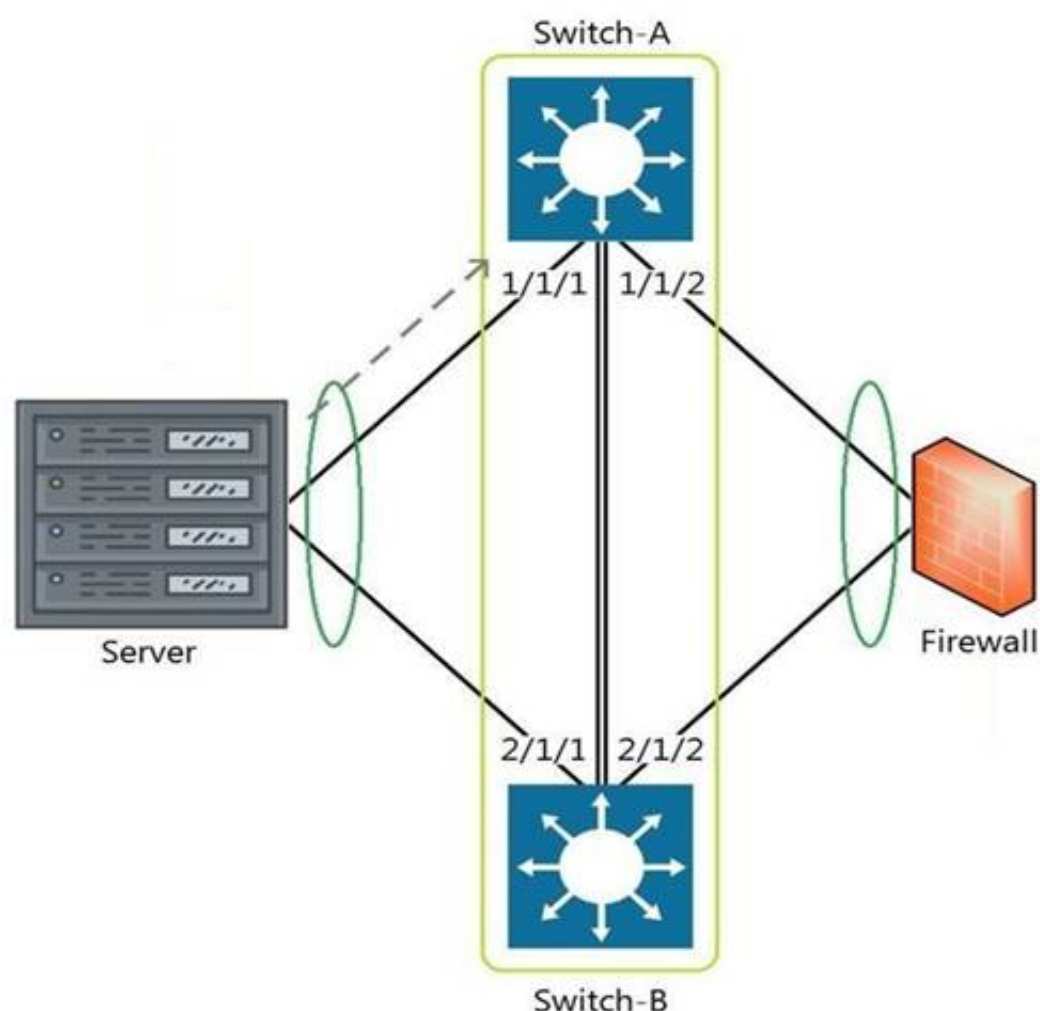
Which command can be used to find the serial number of an Aruba OS-CX switch?

- A. The command inventory
- B. The command version
- C. The command show running-configuration
- D. The command show system

Answer: D

NEW QUESTION 14

Refer to the exhibit.



The above scenario shows a packet from the Server destined for the Firewall. Switch-A and Switch-B are bundled as VSF stack. The LAG between the VSF stack and the firewall indicates a hash function to forward the packet on port 2/1/2.

Which statement is true regarding how Switch-A will forward the packet?

- A. Switch-A will forward the packet on port 1/1/2. VSF will override the typical LAG hash function used for the physical interface selection.
- B. Switch-A will drop the packet
- C. Multi-Chassis lag to multi-chassis lag is not a supported feature of VSF.
- D. Switch-A will encapsulate the packet using GRE to forward to Switch-B in order for the packet to egress on port 2/1/2 per the hash function.
- E. Switch-A will forward the packet along the VSF link to Switch-B so that it will egress on port 2/1/2 per the hash function.

Answer: D

NEW QUESTION 16

Match the terms to the correct layer of the OSI model.

Layer		Term
Transport Layer		Frames
Network Layer		Packets
Physical Layer		RF Signals
Data Link Layer		Segments

- A. Mastered
- B. Not Mastered

Answer: A

Explanation:

Layer		Term
Transport Layer	Data Link Layer	Frames
Network Layer	Network Layer	Packets
Physical Layer	Physical Layer	RF Signals
Data Link Layer	Transport Layer	Segments

NEW QUESTION 21

Refer to the exhibit.

Port	Type	Product Number	Serial Number	Part Number
1/1/1	SFP+DAC1	J9281D	CN95KBZ00X	8121-1300
1/1/2	SFP+DAC1	J9281D	CN95KBZ086	8121-1300
1/1/5	SFP-BT	J8177D	CN96KK232S	1990-4640
1/1/7	SFP-BT	J8177D	CN96KK20R2	1990-4640
1/1/8	SFP-BT	J8177D	CN96KK232F	1990-4640
1/1/25	SFP28DAC3	JL488A	CN97KBG0BJ	8121-1743
1/1/26	SFP28DAC3	JL488A	CN97KBG057	8121-1743
1/1/45	SFP28DAC3	JL488A	CN97KBG0CW	8121-1743
1/1/46	SFP28DAC3	JL488A	CN97KBG0CX	8121-1743
1/1/47	SFP28DAC3	JL488A	CN97KBG0D6	8121-1743
1/1/48	SFP28DAC3	JL488A	CN97KBG038	8121-1743
Core - 1#				

What command (output shown above) gives the optics serial number and part number information?

- A. show interface physical
- B. show interface transceiver
- C. show inventory
- D. show interface optics

Answer: B

NEW QUESTION 23

Which switches support Aruba Virtual Switching Extension (VSX)? (Choose two.)

- A. Aruba 6405
- B. Aruba 2930F
- C. Aruba 8400
- D. Aruba 5406R
- E. Aruba 8350

Answer: AC

NEW QUESTION 25

Core(config)# user admin password

Core(config)# interface mgmt

Core(config-if-mgmt)# ip static 10.254.16.89/22

Core(config-if-mgmt)# default-gateway 10.254.19.129

Core(config)# ssh server vrf mgmt

Core(config)# https-server vrf mgmt

You are tasked with configuring the Core switch to be managed by NetEdit. Currently, the Core switch is at factory-default settings.

Which two steps are missing? (Choose two.)

- A. Core(config)# https-server rest access-mode read-write
- B. Core(config-if-mgmt)# no shutdown
- C. Core(config-if-mgmt)# no tftp-server
- D. Core(config-if-mgmt)# enable
- E. Core(config)# https-server rest access-mode read-only

Answer: AB

NEW QUESTION 26

Which command will suppress LLDP messages from egressing on a given port while still allowing LLDP to be enabled on the switch?

- A. switch(config-if)# no lldp interface (port) transmit
- B. switch(config-if)# no lldp transmit
- C. switch(config-if)# no lldp receive
- D. switch(config)# no lldp

Answer: B

NEW QUESTION 28

Match each description to the correct management tool for Aruba AOS-CX.

Management Tools	Answer Area
Management Tool	Description
NetEdit	<input type="text"/>
Aruba CX Mobile App	<input type="text"/>
	<input type="text"/>
	<input type="text"/>
	<input type="text"/>
	<input type="text"/>

- A. Mastered
- B. Not Mastered

Answer: A

Explanation:

Management Tools	Answer Area	
	Management Tool	Description
NetEdit	NetEdit	can run as an OVA
Aruba CX Mobile App	NetEdit	requires AOS-CX switches to support HTTPS, SSH, and REST access
	Aruba CX Mobile App	connects to switches via Bluetooth or Wi-Fi
	Aruba CX Mobile App	includes a feature for stacking automation
	NetEdit	supports SNMPv2c to discover third-party devices

NEW QUESTION 29

What command displays information regarding the secondary image installed on an AOS-CX switch?

- A. show secondary
- B. show version detail
- C. show version
- D. show images

Answer: D

NEW QUESTION 31

Which two port characteristics must match between LAG interfaces? (Choose two.)

- A. Port number
- B. Duplex
- C. Member ID
- D. Media type
- E. Chassis number

Answer: BD

NEW QUESTION 33

The following command is issued: Switch# checkpoint rollback start What is the result?

- A. The command will fail because rollback commands must be issued from global-config mode.
- B. The switch will revert the running-configuration to the checkpoint called 'start1' without a reboot.
- C. The command will fail because it is incomplete.
- D. The switch will use the checkpoint 'rollback1' as the starting configuration on next reboot.

Answer: B

NEW QUESTION 37

What are two mechanisms supported on AOS-CX 6300 switches used in Multi-active Detection to determine the status of the Primary member? (Choose two.)

- A. Management interface split detection
- B. Peer switch-based detection
- C. Loopback keepalives
- D. ARP-based
- E. BFD

Answer: AD

NEW QUESTION 41

Aruba Access Points tunnel traffic in a campus to the Mobility Controller using which protocol?

- A. Control and Provisioning of Wireless Access Points (CAPWAP)
- B. Generic Routing Encapsulation (GRE)
- C. Lightweight Access Point Protocol (LWAPP)
- D. Process Application Programming Interface (PAPI)

Answer: B

NEW QUESTION 45

Which statement is correct regarding powering an Aruba Access Point?

- A. PoE or PoE+ is only used with Ethernet that is carried over multi-mode fiber cabling.
- B. Using switchports for this reason is unnecessary, because Aruba Access Points typically use an AC to DC power adapter to draw power.
- C. PoE or PoE+ enabled switchports are rarely used given concerns about causing electrical interference, with the data also carried over Ethernet cabling.
- D. Most administrators use PoE or PoE+ enabled switchports to provide both Ethernet connectivity and power to the AP.

Answer: D

NEW QUESTION 47

Refer to the exhibit.

Switch-1(config)# show spanning-tree | exclude Disabled

← ---- output omitted ---->

Port	Role	State	Cost	Priority	Type
1/1/1	Designated	Forwarding	4000	128	point_to_point
Lag1		Forwarding	2000	64	point_to_point
1/1/2	Designated	Forwarding	10000	128	point_to_point
1/1/3	Designated	Forwarding	20000	128	point_to_point

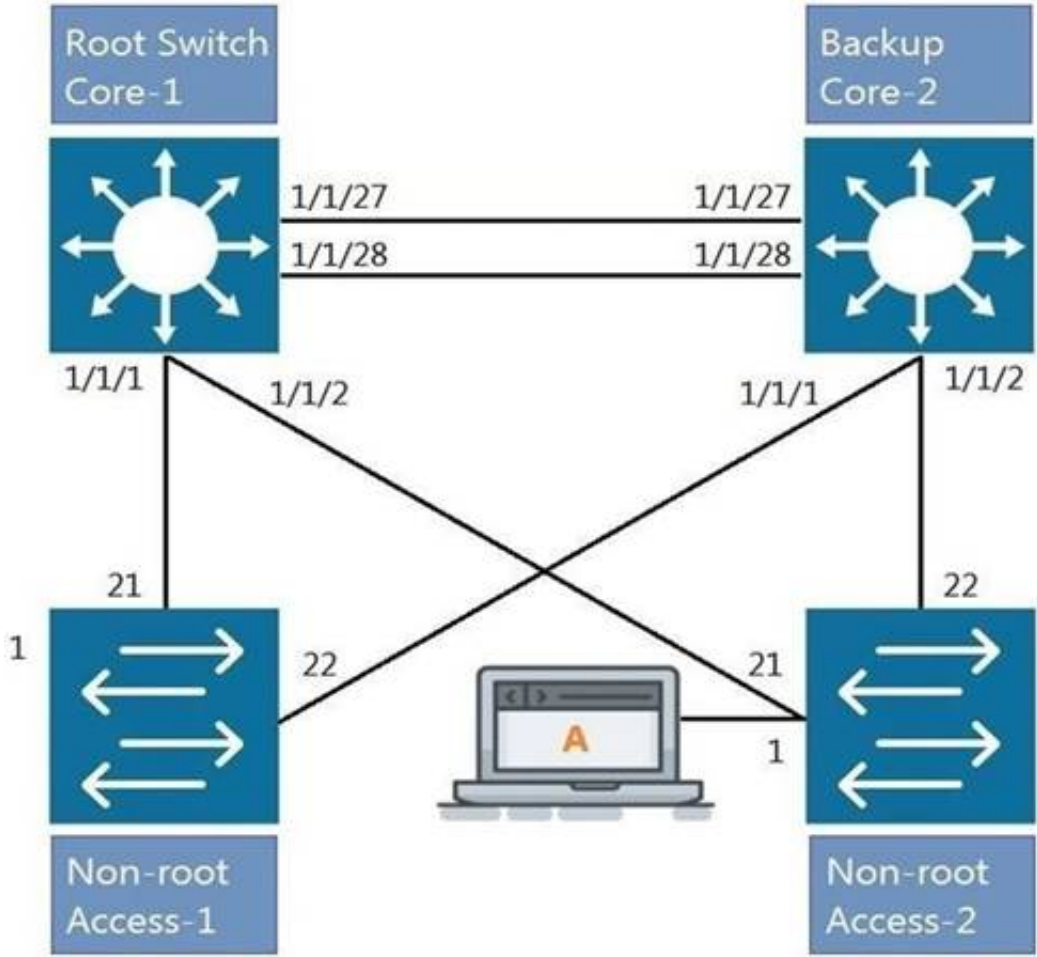
Switch-1 is not the root bridge. The ports shown are all the connected pointtopoint interfaces. What Role (hidden by the blue rectangle) will be assigned to the Lag 1 interface?

- A. Alternate
- B. Backup
- C. Root
- D. Designated

Answer: C

NEW QUESTION 51

Refer to the exhibit.



All four switches in the diagram have been configured with the region name "Aruba1". What two other MSTP configurations must match for switches within the same MST region? (Choose two.)

- A. MST region type
- B. MST Bridge ID
- C. MST version number
- D. MST revision number
- E. MST VLAN to instance mapping

Answer: DE

NEW QUESTION 53

What connectivity commands are available on AOS-CX switches? (Choose two.)

- A. netstatus
- B. traceroute
- C. ping
- D. pathping
- E. tracert

Answer: BC

NEW QUESTION 56

What is the correct description of a Multi-Layer Switch?

- A. a switch with Layer 3 routing capabilities but lacks any Layer 1 features as a consequence
- B. any switch that supports PoE, LLDP-MED and Flow Control
- C. has all the functionality of a Layer 2 switch and most of the functionality of a Layer 3 router
- D. multi-Layer refers specifically to using chassis switches with several line cards over stack port switches

Answer: C

NEW QUESTION 60

.....

Thank You for Trying Our Product

* 100% Pass or Money Back

All our products come with a 90-day Money Back Guarantee.

* One year free update

You can enjoy free update one year. 24x7 online support.

* Trusted by Millions

We currently serve more than 30,000,000 customers.

* Shop Securely

All transactions are protected by VeriSign!

100% Pass Your HPE6-A72 Exam with Our Prep Materials Via below:

<https://www.certleader.com/HPE6-A72-dumps.html>