

Fortinet

Exam Questions NSE5_FMG-7.0

Fortinet NSE 5 - FortiManager 7.0



NEW QUESTION 1

- (Exam Topic 1)

An administrator would like to create an SD-WAN using central management in the Training ADOM.

To create an SD-WAN using central management, which two steps must be completed? (Choose two.)

- A. Specify a gateway address when you create a default SD-WAN static route
- B. Enable SD-WAN central management in the Training ADOM
- C. Configure and install the SD-WAN firewall policy and SD-WAN static route before installing the SD-WAN template settings
- D. Remove all the interface references such as routes or policies that will be a part of SD-WAN member interfaces

Answer: BD

Explanation:

Reference:

<https://docs.fortinet.com/document/fortigate/6.0.0/cookbook/676493/removing-existing-configuration-reference>

NEW QUESTION 2

- (Exam Topic 1)

Which configuration setting for FortiGate is part of a device-level database on FortiManager?

- A. VIP and IP Pools
- B. Firewall policies
- C. Security profiles
- D. Routing

Answer: D

Explanation:

The FortiManager stores the FortiGate configuration details in two distinct databases. The device-level database includes configuration details related to device-level settings, such as interfaces, DNS, routing, and more. The ADOM-level database includes configuration details related to firewall policies, objects, and security profiles.

NEW QUESTION 3

- (Exam Topic 1)

Which two statements about the scheduled backup of FortiManager are true? (Choose two.)

- A. It does not back up firmware images saved on FortiManager.
- B. It can be configured using the CLI and GUI.
- C. It backs up all devices and the FortiGuard database.
- D. It supports FTP, SCP, and SFTP.

Answer: AD

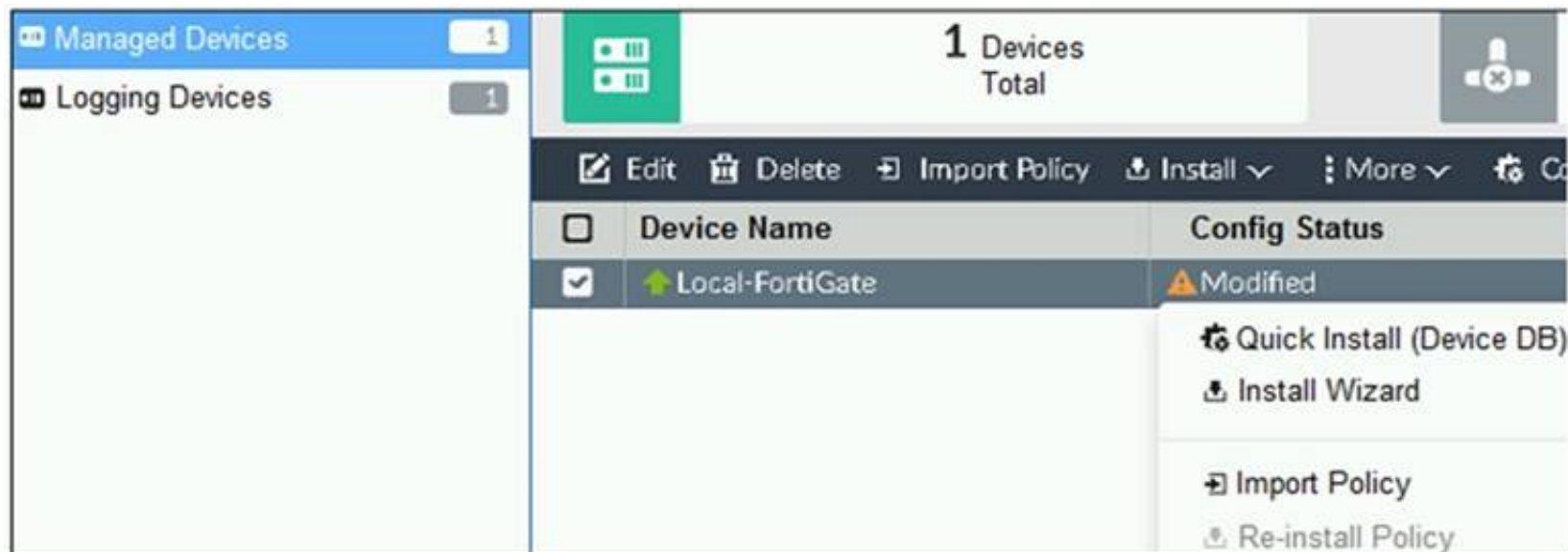
Explanation:

Reference: https://docs.ansible.com/ansible/latest/collections/fortinet/fortimanager/fmgr_system_backup_allsettings_modul

NEW QUESTION 4

- (Exam Topic 1)

Refer to the exhibit.



You are using the Quick Install option to install configuration changes on the managed FortiGate.

Which two statements correctly describe the result? (Choose two.)

- A. It will not create a new revision in the revision history
- B. It installs device-level changes to FortiGate without launching the Install Wizard
- C. It cannot be canceled once initiated and changes will be installed on the managed device
- D. It provides the option to preview configuration changes prior to installing them

Answer: BC

Explanation:

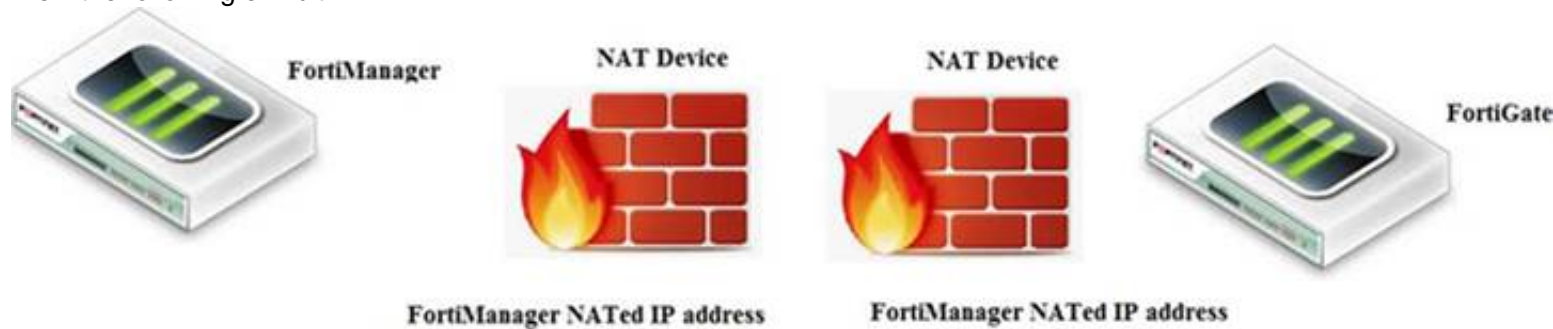
FortiManager_6.4_Study_Guide-Online – page 164

The Install Config option allows you to perform a quick installation of device-level settings without launching the Install Wizard. When you use this option, you cannot preview the changes prior to committing. Administrator should be certain of the changes before using this install option, because the install can't be cancelled after the process is initiated.

NEW QUESTION 5

- (Exam Topic 1)

View the following exhibit.



If both FortiManager and FortiGate are behind the NAT devices, what are the two expected results? (Choose two.)

- A. FortiGate is discovered by FortiManager through the FortiGate NATed IP address.
- B. FortiGate can announce itself to FortiManager only if the FortiManager IP address is configured on FortiGate under central management.
- C. During discovery, the FortiManager NATed IP address is not set by default on FortiGate.
- D. If the FCFM tunnel is torn down, FortiManager will try to re-establish the FGFM tunnel.

Answer: AC

Explanation:

Fortimanager can discover FortiGate through a NATed FortiGate IP address. If a FortiManager NATed IP address is configured on FortiGate, then FortiGate can announce itself to FortiManager. FortiManager will not attempt to re-establish the FGFM tunnel to the FortiGate NATed IP address, if the FGFM tunnel is interrupted. Just like it was in the NATed FortiManager scenario, the FortiManager NATed IP address in this scenario is not configured under FortiGate central management configuration.

NEW QUESTION 6

- (Exam Topic 1)

Refer to the exhibit.

```
Start to import config from device(Local-FortiGate) vdom(root) to
adom(My_ADOM), package(Local-FortiGate_root)
```

```
"firewall service category",SKIPPED,"(name=General, oid=697, DUPLICATE)"
```

```
"firewall address",SUCCESS,"(name=LOCAL_SUBNET, oid=684, new object)"
```

```
"firewall service custom",SUCCESS,"(name=ALL, oid=863, update previous
object)"
```

```
"firewall policy",SUCCESS,"(name=1, oid = 1090, new object)"
```

Which statement about the object named ALL is true?

- A. FortiManager updated the object ALL using the FortiGate value in its database.
- B. FortiManager installed the object ALL with the updated value.
- C. FortiManager created the object ALL as a unique entity in its database, which can be only used by this managed FortiGate.
- D. FortiManager updated the object ALL using the FortiManager value in its database.

Answer: A

NEW QUESTION 7

- (Exam Topic 1)

What are two outcomes of ADOM revisions? (Choose two.)

- A. ADOM revisions can significantly increase the size of the configuration backups.
- B. ADOM revisions can save the current size of the whole ADOM
- C. ADOM revisions can create System Checkpoints for the FortiManager configuration
- D. ADOM revisions can save the current state of all policy packages and objects for an ADOM

Answer: AD

Explanation:

Reference: <https://docs2.fortinet.com/document/fortimanager/6.0.0/best-practices/101837/adom-revisions>

NEW QUESTION 8

- (Exam Topic 1)

Refer to the exhibits. Exhibit one.

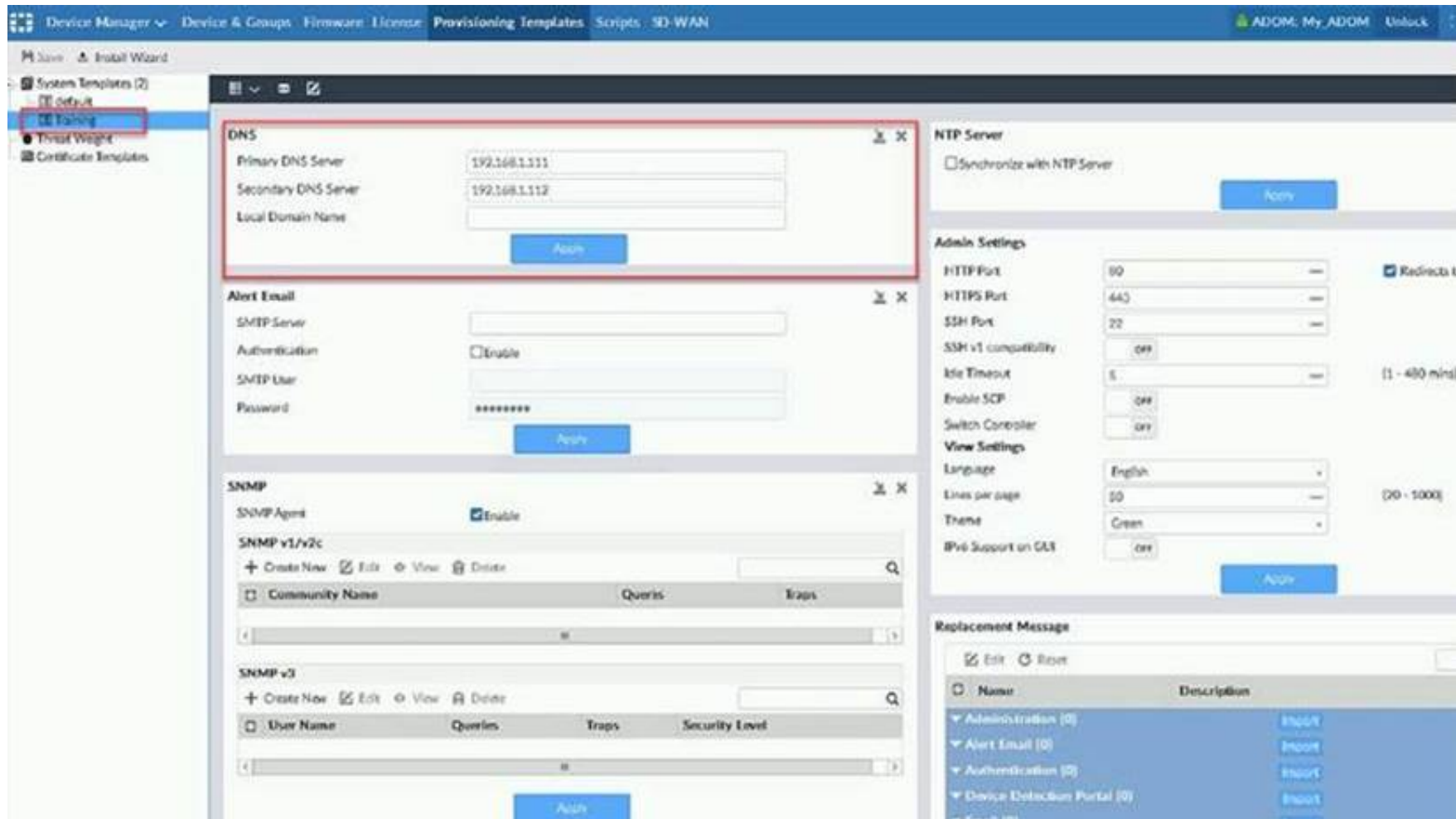
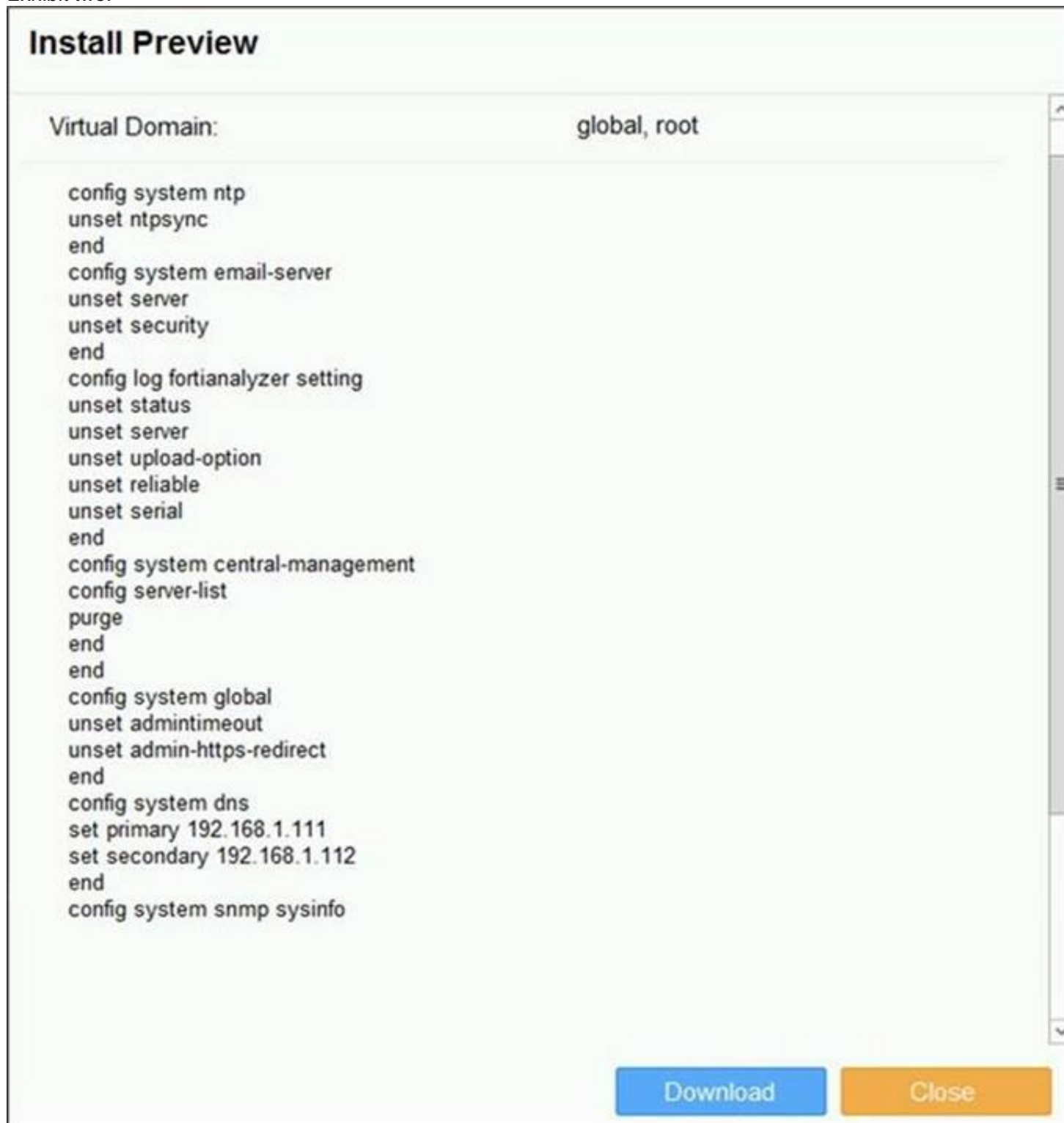


Exhibit two.



An administrator created a new system template named Training with two new DNS addresses on FortiManager. During the installation preview stage, the administrator notices that many unset commands need to be pushed. What can be the main reason for these unset commands?

- A. The DNS addresses in the default system settings are the same as the Training system template
- B. The Training system template has other default settings
- C. The ADOM is locked by another administrator
- D. The Training system template does not have assigned devices

Answer: B

NEW QUESTION 9

- (Exam Topic 1)

An administrator would like to review, approve, or reject all the firewall policy changes made by the junior administrators. How should the Workspace mode be configured on FortiManager?

- A. Set to workflow and use the ADOM locking feature
- B. Set to read/write and use the policy locking feature
- C. Set to normal and use the policy locking feature
- D. Set to disable and use the policy locking feature

Answer: A

Explanation:

Reference:

https://help.fortinet.com/fmgr/50hlp/52/5-2-0/FMG_520_Online_Help/200_What's-New.03.03.html

NEW QUESTION 10

- (Exam Topic 1)

View the following exhibit:

```
#diagnose fmupdate view-serverlist fds
Fortiguard Server Comm: Enabled
Server Override Mode: Loose
FDS server list :
```

Index	Address	Port	TimeZone	Distance	Source
*0	10.0.1.50	8890	-5	0	CLI
1	96.45.33.89	443	-5	0	FDNI
2	96.45.32.81	443	-5	0	FDNI
....					
38	fds1.fortinet.com	443	-5	0	DEFAULT

How will FortiManager try to get updates for antivirus and IPS?

- A. From the list of configured override servers with ability to fall back to public FDN servers
- B. From the configured override server list only
- C. From the default server fds1.fortinet.com
- D. From public FDNI server with highest index number only

Answer: A

Explanation:

Reference:

<https://community.fortinet.com/t5/Fortinet-Forum/Clarification-of-FortiManager-s-quot-Server-Override-Mode>

NEW QUESTION 10

- (Exam Topic 1)

Which two settings must be configured for SD-WAN Central Management? (Choose two.)

- A. SD-WAN must be enabled on per-ADOM basis
- B. You can create multiple SD-WAN interfaces per VDOM
- C. When you configure an SD-WAN, you must specify at least two member interfaces.
- D. The first step in creating an SD-WAN using FortiManager is to create two SD-WAN firewall policies.

Answer: AC

NEW QUESTION 13

- (Exam Topic 2)

An administrator configures a new firewall policy on FortiManager and has not yet pushed the changes to the managed FortiGate. In which database will the configuration be saved?

- A. Device-level database
- B. Revision history database
- C. ADOM-level database
- D. Configuration-level database

Answer: C

Explanation:

<https://kb.fortinet.com/kb/documentLink.do?externalID=FD47942>

NEW QUESTION 15

- (Exam Topic 2)

Which two statements about Security Fabric integration with FortiManager are true? (Choose two.)

- A. The Security Fabric license, group name and password are required for the FortiManager Security Fabric integration
- B. The Fabric View module enables you to generate the Security Fabric ratings for Security Fabric devices
- C. The Security Fabric settings are part of the device level settings
- D. The Fabric View module enables you to view the Security Fabric ratings for Security Fabric devices

Answer: CD

NEW QUESTION 20

- (Exam Topic 2)

Refer to the exhibit.

```
config system global
set workspace-mode normal
end
```

Given the configuration shown in the exhibit, which two statements are true? (Choose two.)

- A. It allows two or more administrators to make configuration changes at the same time, in the same ADOM.
- B. It disables concurrent read-write access to an ADOM.
- C. It allows the same administrator to lock more than one ADOM at the same time.
- D. It is used to validate administrator login attempts through external servers.

Answer: BC

Explanation:

Reference:

<https://docs.fortinet.com/document/fortimanager/6.0.4/administration-guide/86456/concurrentadom-access>

NEW QUESTION 25

- (Exam Topic 2)

An administrator has assigned a global policy package to custom ADOM1. Then the administrator creates a new policy package, Fortinet, in the custom ADOM1. Which statement about the global policy package assignment to the newly-created policy package Fortinet is true?

- A. When a new policy package is created, it automatically assigns the global policies to the new package.
- B. When a new policy package is created, you need to assign the global policy package from the global ADOM.
- C. When a new policy package is created, you need to reapply the global policy package to the ADOM.
- D. When a new policy package is created, you can select the option to assign the global policies to the new package.

Answer: A

Explanation:

Global Policy Package is applied at the ADOM level and you have the option to choose which ADOM policy packages you want to exclude (there is no option to choose Policy Packages to include).

NEW QUESTION 26

- (Exam Topic 2)

What is the purpose of ADOM revisions?

- A. To create System Checkpoints for the FortiManager configuration.
- B. To save the current state of the whole ADOM.
- C. To save the current state of all policy packages and objects for an ADOM.
- D. To revert individual policy packages and device-level settings for a managed FortiGate by reverting to a specific ADOM revision

Answer: C

Explanation:

Fortimanager 6.4 Study guide page 198

NEW QUESTION 30

- (Exam Topic 2)

An administrator's PC crashes before the administrator can submit a workflow session for approval. After the PC is restarted, the administrator notices that the ADOM was locked from the session before the crash.

How can the administrator unlock the ADOM?

- A. Restore the configuration from a previous backup.
- B. Log in as Super_User in order to unlock the ADOM.
- C. Log in using the same administrator account to unlock the ADOM.
- D. Delete the previous admin session manually through the FortiManager GUI or CLI.

Answer: D

NEW QUESTION 34

- (Exam Topic 3)

An administrator would like to create an SD-WAN default static route for a newly created SD-WAN using the FortiManager GUI. Both port1 and port2 are part of

the SD-WAN member interfaces.

Which interface must the administrator select in the static route device drop-down list?

- A. port2
- B. virtual-wan-link
- C. port1
- D. auto-discovery

Answer: B

NEW QUESTION 36

- (Exam Topic 3)

In addition to the default ADOMs, an administrator has created a new ADOM named Training for FortiGate devices. The administrator authorized the FortiGate device on FortiManager using the Fortinet Security Fabric.

Given the administrator's actions, which statement correctly describes the expected result?

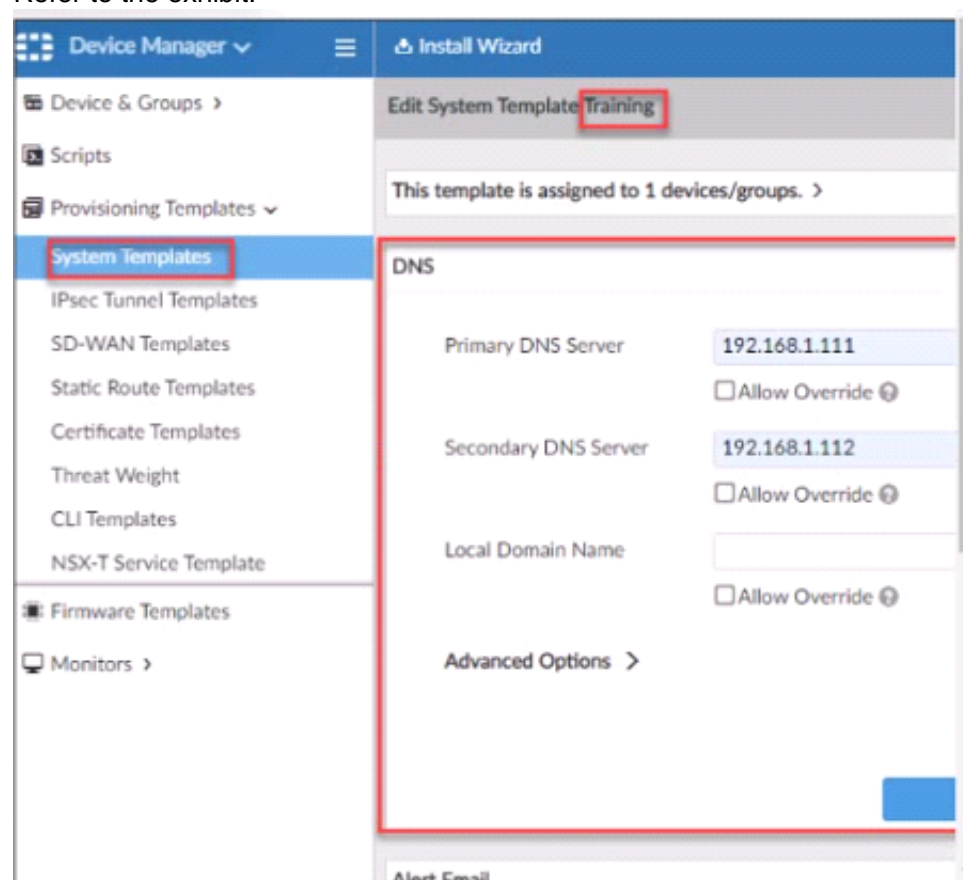
- A. The FortiManager administrator must add the authorized device to the Training ADOM using the Add Device wizard only.
- B. The authorized FortiGate will be automatically added to the Training ADOM.
- C. The authorized FortiGate will appear in the root ADOM.
- D. The authorized FortiGate can be added to the Training ADOM using FortiGate Fabric Connectors.

Answer: C

NEW QUESTION 40

- (Exam Topic 3)

Refer to the exhibit.



According to the error message why is FortiManager failing to add the FortiAnalyzer device?

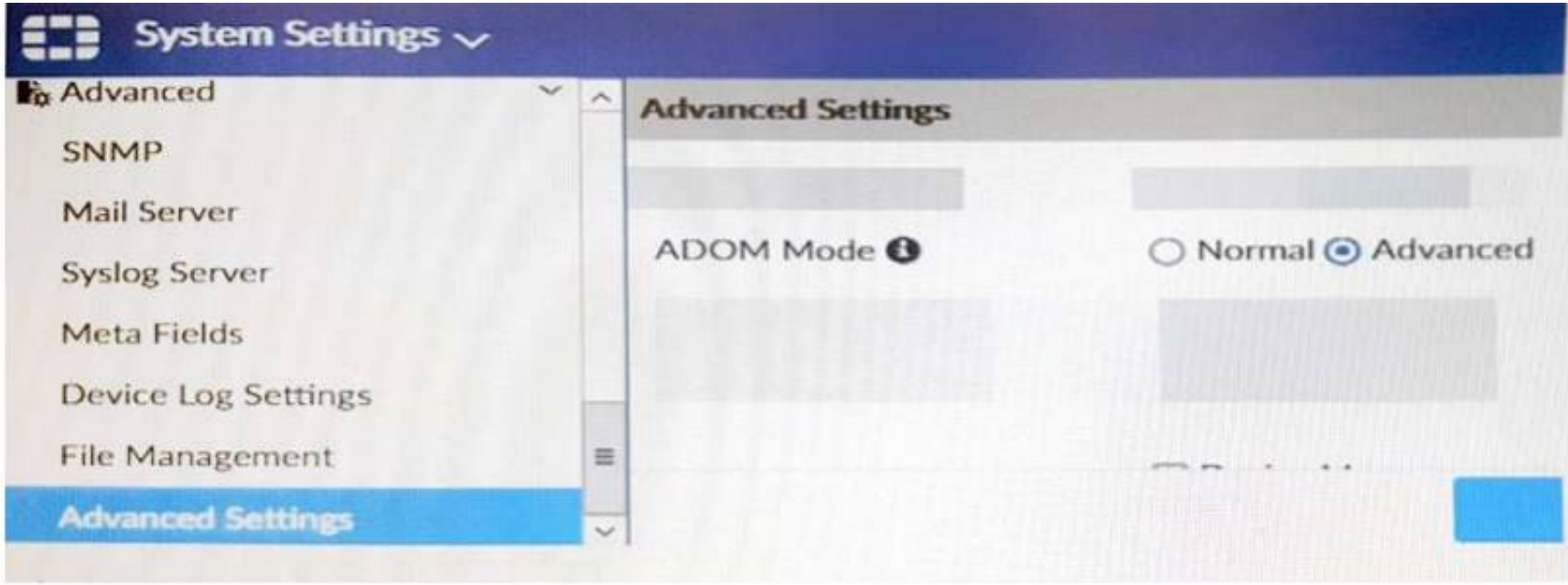
- A. The administrator must turn off the Use Legacy Device login and add the FortiAnalyzer device to the same network as Forti-Manager
- B. The administrator must select the Forti-Manager administrative access checkbox on the FortiAnalyzer management interface
- C. The administrator must use the Add Model Device section and discover the FortiAnalyzer device
- D. The administrator must use the correct user name and password of the FortiAnalyzer device

Answer: C

NEW QUESTION 44

- (Exam Topic 3)

View the following exhibit.



Which of the following statements are true based on this configuration setting? (Choose two.)

- A. This setting will enable the ADOMs feature on FortiManager.
- B. This setting is applied globally to all ADOMs.
- C. This setting will allow assigning different VDOMs from the same FortiGate to different ADOMs.
- D. This setting will allow automatic updates to the policy package configuration for a managed device.

Answer: BC

NEW QUESTION 45

- (Exam Topic 3)
View the following exhibit.

Start to import config from device(Local-FortiGate) vdom(root) to adom(My_ADOM), package(Local-Fortigate_root)

```
"firewall service category",SKIPPED,"(name=General,oid=697, DUPLICATE)"
"firewall address", SUCCESS,"(name=LOCAL_SUBNET,oid=684,new object)"
"firewall service custom",SUCCESS,"(name=ALL,oid=863,update previous object)"
"firewall policy",SUCCESS,"(name=1,oid-1090, new object)"
```

Which one of the following statements is true regarding the object named ALL?

- A. FortiManager updated the object ALL using FortiGate's value in its database
- B. FortiManager updated the object ALL using FortiManager's value in its database
- C. FortiManager created the object ALL as a unique entity in its database, which can be only used by this managed FortiGate.
- D. FortiManager installed the object ALL with the updated value.

Answer: A

NEW QUESTION 50

.....

Thank You for Trying Our Product

We offer two products:

1st - We have Practice Tests Software with Actual Exam Questions

2nd - Questions and Answers in PDF Format

NSE5_FMG-7.0 Practice Exam Features:

- * NSE5_FMG-7.0 Questions and Answers Updated Frequently
- * NSE5_FMG-7.0 Practice Questions Verified by Expert Senior Certified Staff
- * NSE5_FMG-7.0 Most Realistic Questions that Guarantee you a Pass on Your First Try
- * NSE5_FMG-7.0 Practice Test Questions in Multiple Choice Formats and Updates for 1 Year

100% Actual & Verified — Instant Download, Please Click
[Order The NSE5_FMG-7.0 Practice Test Here](#)