



# Fortinet

## Exam Questions NSE5\_FMG-7.0

Fortinet NSE 5 - FortiManager 7.0

## About ExamBible

*[Your Partner of IT Exam](#)*

## Found in 1998

ExamBible is a company specialized on providing high quality IT exam practice study materials, especially Cisco CCNA, CCDA, CCNP, CCIE, Checkpoint CCSE, CompTIA A+, Network+ certification practice exams and so on. We guarantee that the candidates will not only pass any IT exam at the first attempt but also get profound understanding about the certificates they have got. There are so many alike companies in this industry, however, ExamBible has its unique advantages that other companies could not achieve.

## Our Advances

### \* 99.9% Uptime

All examinations will be up to date.

### \* 24/7 Quality Support

We will provide service round the clock.

### \* 100% Pass Rate

Our guarantee that you will pass the exam.

### \* Unique Gurantee

If you do not pass the exam at the first time, we will not only arrange FULL REFUND for you, but also provide you another exam of your claim, ABSOLUTELY FREE!

#### NEW QUESTION 1

- (Exam Topic 1)

Which three settings are the factory default settings on FortiManager? (Choose three.)

- A. Username is admin
- B. Password is fortinet
- C. FortiAnalyzer features are disabled
- D. Reports and Event Monitor panes are enabled
- E. port1 interface IP address is 192.168.1.99/24

**Answer:** ACE

#### NEW QUESTION 2

- (Exam Topic 1)

An administrator would like to create an SD-WAN using central management in the Training ADOM.

To create an SD-WAN using central management, which two steps must be completed? (Choose two.)

- A. Specify a gateway address when you create a default SD-WAN static route
- B. Enable SD-WAN central management in the Training ADOM
- C. Configure and install the SD-WAN firewall policy and SD-WAN static route before installing the SD-WANtemplate settings
- D. Remove all the interface references such as routes or policies that will be a part of SD-WAN member interfaces

**Answer:** BD

#### Explanation:

Reference:

<https://docs.fortinet.com/document/fortigate/6.0.0/cookbook/676493/removing-existing-configuration-reference>

#### NEW QUESTION 3

- (Exam Topic 1)

Which configuration setting for FortiGate is part of a device-level database on FortiManager?

- A. VIP and IP Pools
- B. Firewall policies
- C. Security profiles
- D. Routing

**Answer:** D

#### Explanation:

The FortiManager stores the FortiGate configuration details in two distinct databases. The device-level database includes configuration details related to device-level settings, such as interfaces, DNS, routing, and more. The ADOM-level database includes configuration details related to firewall policies, objects, and security profiles.

#### NEW QUESTION 4

- (Exam Topic 1)

Which two statements about the scheduled backup of FortiManager are true? (Choose two.)

- A. It does not back up firmware images saved on FortiManager.
- B. It can be configured using the CLI and GUI.
- C. It backs up all devices and the FortiGuard database.
- D. It supports FTP, SCP, and SFTP.

**Answer:** AD

#### Explanation:

Reference: [https://docs.ansible.com/ansible/latest/collections/fortinet/fortimanager/fmgr\\_system\\_backup\\_allsettings\\_modul](https://docs.ansible.com/ansible/latest/collections/fortinet/fortimanager/fmgr_system_backup_allsettings_modul)

#### NEW QUESTION 5

- (Exam Topic 1)

What is the purpose of the Policy Check feature on FortiManager?

- A. To find and provide recommendation to combine multiple separate policy packages into one common policy package
- B. To find and merge duplicate policies in the policy package
- C. To find and provide recommendation for optimizing policies in a policy package
- D. To find and delete disabled firewall policies in the policy package

**Answer:** C

#### Explanation:

Reference:

[https://help.fortinet.com/fmgr/50hlp/56/5-6-2/FortiManager\\_Admin\\_Guide/1200\\_Policy%20and%20Objects/08](https://help.fortinet.com/fmgr/50hlp/56/5-6-2/FortiManager_Admin_Guide/1200_Policy%20and%20Objects/08)

#### NEW QUESTION 6

- (Exam Topic 1)

View the following exhibit:

### Create New CLI Script

[\[View Sample Script\]](#)

Script Name	<input type="text" value="Config"/>	
Comments	<input type="text" value="Write a comment"/>	0/255
Type	<input type="text" value="CLI Script"/>	
Run Script on	<input type="text" value="Remote FortiGate Directly(via CLI)"/>	

### Script Detail

```
config vpn ipsec phase1-interface
edit "H25_0"
set auto-discovery-sender enable
next
end
config system interface
edit "H25_0"
set vdom "root"
set ip 172.16.1.1 255.255.255.255
set remote-ip 172.16.1.254
next
end
config router bgp
set as 65100
set router-id 172.16.1.1
config neighbor-group
```

### Advanced Device Filters

Which two statements are true if the script is executed using the Remote FortiGate Directly (via CLI) option? (Choose two.)

- A. You must install these changes using Install Wizard
- B. FortiGate will auto-update the FortiManager's device-level database.
- C. FortiManager will create a new revision history.
- D. FortiManager provides a preview of CLI commands before executing this script on a managed FortiGate.

**Answer:** BC

### NEW QUESTION 7

- (Exam Topic 1)

An administrator with the Super\_User profile is unable to log in to FortiManager because of an authentication failure message. Which troubleshooting step should you take to resolve the issue?

- A. Make sure FortiManager Access is enabled in the administrator profile
- B. Make sure Offline Mode is disabled
- C. Make sure the administrator IP address is part of the trusted hosts.
- D. Make sure ADOMs are enabled and the administrator has access to the Global ADOM

**Answer:** C

### Explanation:

Even if a user entered the correct userid/password, the FMG denies access if a user is logging in from an untrusted source IP subnets.  
Reference: <https://docs.fortinet.com/document/fortimanager/6.0.3/administration-guide/107347/trusted-hosts>

### NEW QUESTION 8

- (Exam Topic 1)

What are two outcomes of ADOM revisions? (Choose two.)

- A. ADOM revisions can significantly increase the size of the configuration backups.
- B. ADOM revisions can save the current size of the whole ADOM
- C. ADOM revisions can create System Checkpoints for the FortiManager configuration
- D. ADOM revisions can save the current state of all policy packages and objects for an ADOM

**Answer:** AD

### Explanation:

Reference: <https://docs2.fortinet.com/document/fortimanager/6.0.0/best-practices/101837/adom-revisions>

### NEW QUESTION 9

- (Exam Topic 1)

View the following exhibit, which shows the Download Import Report:

```
Start to import config from devices(Remote-FortiGate) vdom (root)to adom (MyADOM),
Package(Remote-FortiGate)
"firewall address", SUCCESS,"(name=REMOTE_SUBNET,oid=580, new object)"
"firewall policy",SUCCESS,"(name=1, oid=990,new object)"
"firewall policy",FAIL,"(name=ID:2(#2), oid=991, reason=interface(interface binding
Contradiction.detail:any<-port6)binding fail)"
```

Why it is failing to import firewall policy ID 2?

- A. The address object used in policy ID 2 already exist in ADON database with any as interface association and conflicts with address object interface association locally on the FortiGate
- B. Policy ID 2 is configured from interface any to port6 FortiManager rejects to import this policy because any interface does not exist on FortiManager
- C. Policy ID 2 does not have ADOM Interface mapping configured on FortiManager
- D. Policy ID 2 for this managed FortiGate already exists on FortiManager in policy package named Remote-FortiGate.

**Answer:** A

**Explanation:**

FortiManager\_6.4\_Study\_Guide-Online – page 331 & 332

#### NEW QUESTION 10

- (Exam Topic 1)

In the event that the primary FortiManager fails, which of the following actions must be performed to return the FortiManager HA to a working state?

- A. Secondary device with highest priority will automatically be promoted to the primary role, and manually reconfigure all other secondary devices to point to the new primary device
- B. Reboot one of the secondary devices to promote it automatically to the primary role, and reconfigure all other secondary devices to point to the new primary device.
- C. Manually promote one of the secondary devices to the primary role, and reconfigure all other secondary devices to point to the new primary device.
- D. FortiManager HA state transition is transparent to administrators and does not require any reconfiguration.

**Answer:** C

**Explanation:**

FortiManager\_6.4\_Study\_Guide-Online – page 346

FortiManager HA doesn't support IP takeover where an HA state transition is transparent to administrators. If a failure of the primary occurs, the administrator must take corrective action to resolve the problem that may include invoking the state transition. If the primary device fails, the administrator must do the following in order to return the FortiManager HA to a working state:

- \* 1. Manually reconfigure one of the secondary devices to become the primary device
- \* 2. Reconfigure all other secondary devices to point to the new primary device

#### NEW QUESTION 10

- (Exam Topic 1)

An administrator, Trainer, who is assigned the Super\_User profile, is trying to approve a workflow session that was submitted by another administrator, Student. However, Trainer is unable to approve the workflow session.

What can prevent an admin account that has Super\_User rights over the device from approving a workflow session?

**Session List**

View Diff						
<input type="checkbox"/>	ID	Name	User	Date Submitt...	Approved/To...	Comments
<input checked="" type="checkbox"/>	1	Firewall p..	Student	2017-06-01...	0/1	firewall policies

[+ Add Comment](#)

[Student] - 2017-06-01 13:31:35  
 firewall policies  
 [Student] - 2017-06-01 16:29:27

- A. Trainer is not a part of workflow approval group
- B. Trainer does not have full rights over this ADOM
- C. Trainer must close Student's workflow session before approving the request
- D. Student, who submitted the workflow session, must first self-approve the request

**Answer:** A

**Explanation:**

Reference:

[https://help.fortinet.com/fmgr/50hlp/56/5-6-1/FMG-FAZ/0800\\_ADOMs/1800\\_Workflow/0600\\_Workflow%20s](https://help.fortinet.com/fmgr/50hlp/56/5-6-1/FMG-FAZ/0800_ADOMs/1800_Workflow/0600_Workflow%20s)



#### NEW QUESTION 11

- (Exam Topic 1)

View the following exhibit.

##### Starting Log (Run the device)

Start installing

Local-FortiGate \$ config user device

Local-FortiGate (device) \$ edit "mydevice"

new entry 'mydevice' added

Local-FortiGate (mydevice) \$ next

MAC address can not be 0

Node\_check\_object fail!for mac 00:00:00:00:00:00

Attribute 'mac' value '00:00:00:00:00:00' checkingfail -33

Command fail. Return code 1

Local-FortiGate (device) \$ end

...

Local-FortiGate \$ config firewall policy

Local-FortiGate (policy) \$ edit 2

New entry '2' added

Local-FortiGate (2) \$ set name "Device\_policy"

Local-FortiGate (2) \$ set uuid 64...

Local-FortiGate (2) \$ set srcintf "port3"

Local-FortiGate (2) \$ set dstintf "port1"

Local-FortiGate (2) \$ set srcaddr "all"

Local-FortiGate (2) \$ set dstaddr "all"

Local-FortiGate (2) \$ set action accept

Local-FortiGate (2) \$ set schedule "always"

Local-FortiGate (2) \$ set service "ALL"

Local-FortiGate (2) \$ set devices "mydevice"

Entry not found in datasource

Value parse error before 'mydevice'

Command fail. Return code -3

Local-FortiGate (2) \$ set nat enable

Local-FortiGate (2) \$ next

Local-FortiGate (policy) \$ end

...

Which statement is true regarding this failed installation log?

- A. Policy ID 2 is installed without a source address
- B. Policy ID 2 will not be installed
- C. Policy ID 2 is installed in disabled state
- D. Policy ID 2 is installed without a source device

**Answer:** D

#### NEW QUESTION 16

- (Exam Topic 1)

In addition to the default ADOMs, an administrator has created a new ADOM named Training for FortiGate devices. The administrator sent a device registration to FortiManager from a remote FortiGate. Which one of the following statements is true?

- A. The FortiGate will be added automatically to the default ADOM named FortiGate.
- B. The FortiGate will be automatically added to the Training ADOM.
- C. By default, the unregistered FortiGate will appear in the root ADOM.
- D. The FortiManager administrator must add the unregistered device manually to the unregistered device manually to the Training ADOM using the Add Device wizard

**Answer:** C

**Explanation:**

Reference: <https://docs.fortinet.com/document/fortimanager/7.0.0/administration-guide/718923/root-adom>

#### NEW QUESTION 20

- (Exam Topic 1)

Refer to the exhibits. Exhibit one.

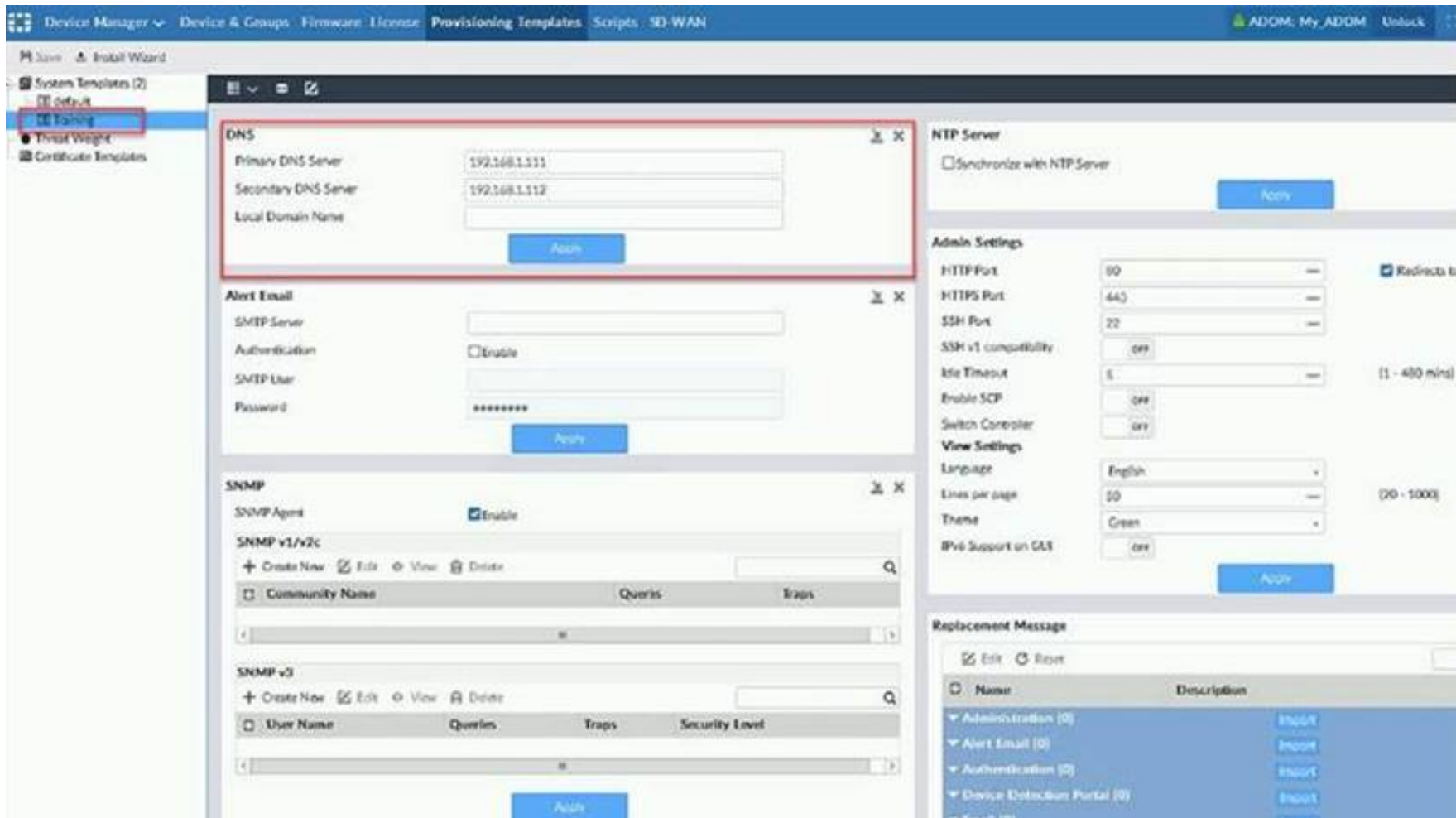
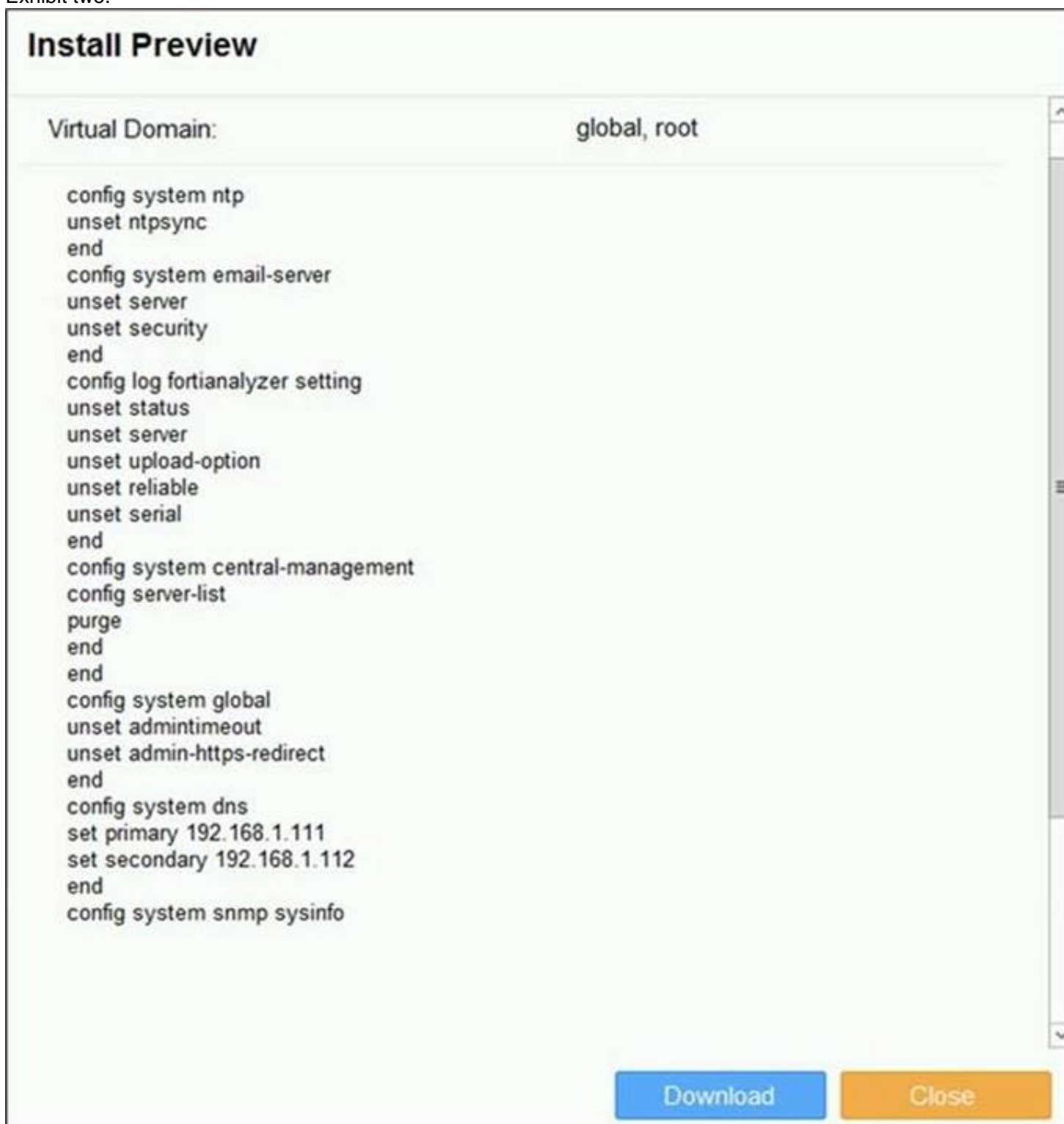


Exhibit two.



An administrator created a new system template named Training with two new DNS addresses on FortiManager. During the installation preview stage, the administrator notices that many unset commands need to be pushed. What can be the main reason for these unset commands?

- A. The DNS addresses in the default system settings are the same as the Training system template
- B. The Training system template has other default settings
- C. The ADOM is locked by another administrator
- D. The Training system template does not have assigned devices

**Answer:** B

#### NEW QUESTION 24

- (Exam Topic 2)

An administrator is replacing a device on FortiManager by running the following command: `execute device replace sn <devname> <serialnum>`. What device name and serial number must the administrator use?

- A. Device name and serial number of the original device.
- B. Device name and serial number of the replacement device.
- C. Device name of the replacement device and serial number of the original device.
- D. Device name of the original device and serial number of the replacement device.

**Answer:** D

#### NEW QUESTION 28

- (Exam Topic 2)

An administrator configures a new firewall policy on FortiManager and has not yet pushed the changes to the managed FortiGate. In which database will the configuration be saved?

- A. Device-level database
- B. Revision history database
- C. ADOM-level database
- D. Configuration-level database

**Answer:** C

#### Explanation:

<https://kb.fortinet.com/kb/documentLink.do?externalID=FD47942>

#### NEW QUESTION 32

- (Exam Topic 2)

Which two statements regarding device management on FortiManager are true? (Choose two.)

- A. FortiGate devices in HA cluster devices are counted as a single device.
- B. FortiGate in transparent mode configurations are not counted toward the device count on FortiManager.
- C. FortiGate devices in an HA cluster that has five VDOMs are counted as five separate devices.
- D. The maximum number of managed devices for each ADOM is 500.

**Answer:** AC

#### NEW QUESTION 37

- (Exam Topic 2)

An administrator has enabled Service Access on FortiManager. What is the purpose of Service Access on the FortiManager interface?

- A. Allows FortiManager to download IPS packages
- B. Allows FortiManager to respond to request for FortiGuard services from FortiGate devices
- C. Allows FortiManager to run real-time debugs on the managed devices
- D. Allows FortiManager to automatically configure a default route

**Answer:** B

#### Explanation:

FortiManager 6.2 Study guide page 350

#### NEW QUESTION 40

- (Exam Topic 2)

What will be the result of reverting to a previous revision version in the revision history?

- A. It will install configuration changes to managed device automatically
- B. It will tag the device settings status as Auto-Update
- C. It will generate a new version ID and remove all other revision history versions
- D. It will modify the device-level database

**Answer:** D

#### NEW QUESTION 41

- (Exam Topic 2)

What does a policy package status of Conflict indicate?

- A. The policy package reports inconsistencies and conflicts during a Policy Consistency Check.
- B. The policy package does not have a FortiGate as the installation target.
- C. The policy package configuration has been changed on both FortiManager and the managed device independently.
- D. The policy configuration has never been imported after a device was registered on FortiManager.

**Answer:** C



#### NEW QUESTION 44

- (Exam Topic 2)

Refer to the exhibit.

```
config system global
set workspace-mode normal
end
```

Given the configuration shown in the exhibit, which two statements are true? (Choose two.)

- A. It allows two or more administrators to make configuration changes at the same time, in the same ADOM.
- B. It disables concurrent read-write access to an ADOM.
- C. It allows the same administrator to lock more than one ADOM at the same time.
- D. It is used to validate administrator login attempts through external servers.

**Answer:** BC

#### Explanation:

Reference:

<https://docs.fortinet.com/document/fortimanager/6.0.4/administration-guide/86456/concurrentadom-access>

#### NEW QUESTION 49

- (Exam Topic 2)

Refer to the exhibit.



An administrator logs into the FortiManager GUI and sees the panes shown in the exhibit.

Which two reasons can explain why the FortiAnalyzer feature panes do not appear? (Choose two.)

- A. The administrator logged in using the unsecure protocol HTTP, so the view is restricted.
- B. The administrator profile does not have full access privileges like the Super\_User profile.
- C. The administrator IP address is not a part of the trusted hosts configured on FortiManager interfaces.
- D. FortiAnalyzer features are not enabled on FortiManager.

**Answer:** BD

#### NEW QUESTION 53

- (Exam Topic 3)

An administrator would like to create an SD-WAN using central management. What steps does the administrator need to perform to create an SD-WAN using central management?

- A. First create an SD-WAN firewall policy, add member interfaces to the SD-WAN template and create a static route
- B. You must specify a gateway address when you create a default static route
- C. Remove all the interface references such as routes or policies
- D. Enable SD-WAN central management in the ADOM, add member interfaces, create a static route and SDWAN firewall policies.

**Answer:** D

#### NEW QUESTION 57

- (Exam Topic 3)

What does the diagnose dvm check-integrity command do? (Choose two.)

- A. Internally upgrades existing ADOMs to the same ADON version in order to clean up and correct the ADOM syntax
- B. Verifies and corrects unregistered, registered, and deleted device states
- C. Verifies and corrects database schemas in all object tables
- D. Verifies and corrects duplicate VDOM entries

**Answer:** BD

#### Explanation:

\* 6.2 Study Guide page 305 verify and correct parts of the device manager databases, including:– inconsistent device-to-group and group-to-ADOM memberships– unregistered, registered, and deleted device states– device lock statuses– duplicate VDOM entries

#### NEW QUESTION 59

- (Exam Topic 3)

Which of the following statements are true regarding schedule backup of FortiManager? (Choose two.)

- A. Backs up all devices and the FortiGuard database.
- B. Does not back up firmware images saved on FortiManager
- C. Supports FTP, SCP, and SFTP
- D. Can be configured from the CLI and GUI

**Answer:** BC

#### NEW QUESTION 64

- (Exam Topic 3)

An administrator would like to create an SD-WAN default static route for a newly created SD-WAN using the FortiManager GUI. Both port1 and port2 are part of the SD-WAN member interfaces.

Which interface must the administrator select in the static route device drop-down list?

- A. port2
- B. virtual-wan-link
- C. port1
- D. auto-discovery

**Answer:** B

#### NEW QUESTION 69

- (Exam Topic 3)

In addition to the default ADOMs, an administrator has created a new ADOM named Training for FortiGate devices. The administrator authorized the FortiGate device on FortiManager using the Fortinet Security Fabric.

Given the administrator's actions, which statement correctly describes the expected result?

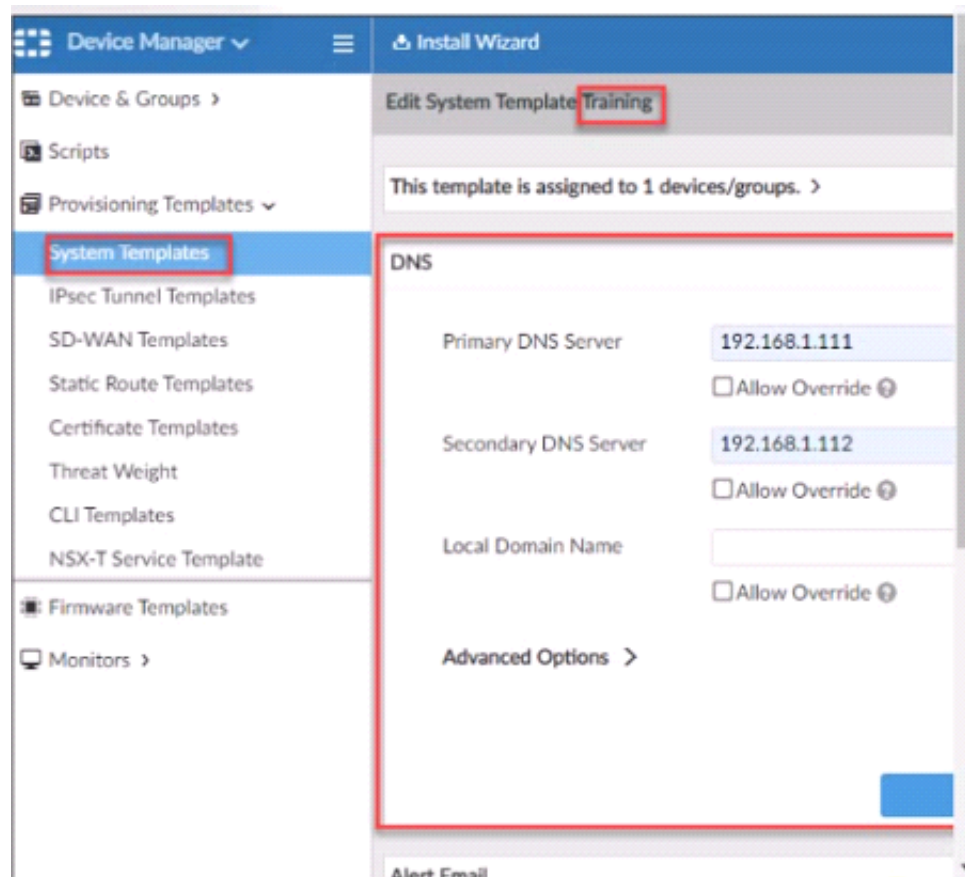
- A. The FortiManager administrator must add the authorized device to the Training ADOM using the Add Device wizard only.
- B. The authorized FortiGate will be automatically added to the Training ADOM.
- C. The authorized FortiGate will appear in the root ADOM.
- D. The authorized FortiGate can be added to the Training ADOM using FortiGate Fabric Connectors.

**Answer:** C

#### NEW QUESTION 74

- (Exam Topic 3)

Refer to the exhibit.



According to the error message why is FortiManager failing to add the FortiAnalyzer device?

- A. The administrator must turn off the Use Legacy Device login and add the FortiAnalyzer device to the same network as FortiManager
- B. The administrator must select the FortiManager administrative access checkbox on the FortiAnalyzer management interface
- C. The administrator must use the Add Model Device section and discover the FortiAnalyzer device
- D. The administrator must use the correct user name and password of the FortiAnalyzer device

**Answer:** C

#### NEW QUESTION 79

- (Exam Topic 3)

Which two settings are required for FortiManager Management Extension Applications (MEA)? (Choose two.)

- A. When you configure MEA, you must open TCP or UDP port 540.

- B. You must open the ports to the Fortinet registry
- C. You must create a MEA special policy on FortiManager using the super user profile
- D. The administrator must have the super user profile.

**Answer:** CD

#### NEW QUESTION 80

- (Exam Topic 3)

Refer to the exhibit.

```
Start to import config from device(Local-FortiGate) vdom(root) to
adom(My_ADOM), package(Local-FortiGate_root)

"firewall service category",SKIPPED,"(name=General, oid=697, DUPLICATE)"

"firewall address",SUCCESS,"(name=LOCAL_SUBNET, oid=684, new object)"

"firewall service custom",SUCCESS,"(name=ALL, oid=863, update previous
object)"

"firewall policy",SUCCESS,"(name=1, oid=1090, new object)"
```

Given the configuration shown in the exhibit, how did FortiManager handle the service category named General?

- A. FortiManager ignored the firewall service category General but created a new service category in its database.
- B. FortiManager ignored the firewall service category general and deleted the duplicate value In Its database
- C. FortiManager ignored the firewall service category General and updated the FortiGate duplicate value in the FortiGate database.
- D. FortiManager ignored the firewall service category General and did not update Its database with the value

**Answer:** C

#### NEW QUESTION 82

.....

## Relate Links

**100% Pass Your NSE5\_FMG-7.0 Exam with ExamBible Prep Materials**

[https://www.exambible.com/NSE5\\_FMG-7.0-exam/](https://www.exambible.com/NSE5_FMG-7.0-exam/)

## Contact us

We are proud of our high-quality customer service, which serves you around the clock 24/7.

Viste - <https://www.exambible.com/>