

Exam Questions AZ-200

Microsoft Azure Developer Core Solutions

<https://www.2passeasy.com/dumps/AZ-200/>



NEW QUESTION 1

- (Exam Topic 1)

Note: This question is part of a series of questions that present the same scenario. Each question in the series contains a unique solution. Determine whether the solution meets the stated goals.

You need to ensure that the SecurityPin security requirements are met.

Solution; Using the Azure Portal, add Data Masking to the SecurityPin column, and exclude the dbo user. Add a SQL security policy with a filter predicate based on the user identity.

Does the solution meet the goal?

- A. Yes
- B. No

Answer: B

NEW QUESTION 2

- (Exam Topic 1)

You need to ensure disaster recovery requirements are met. What code should you add at line PC16?

To answer, drag the appropriate code fragments to the correct locations. Each code fragment may be used once, more than once, or not at all. You may need to drag the split bar between panes or scroll to view content.

NOTE: Each correct selection is worth one point.

- A. Mastered
- B. Not Mastered

Answer: A

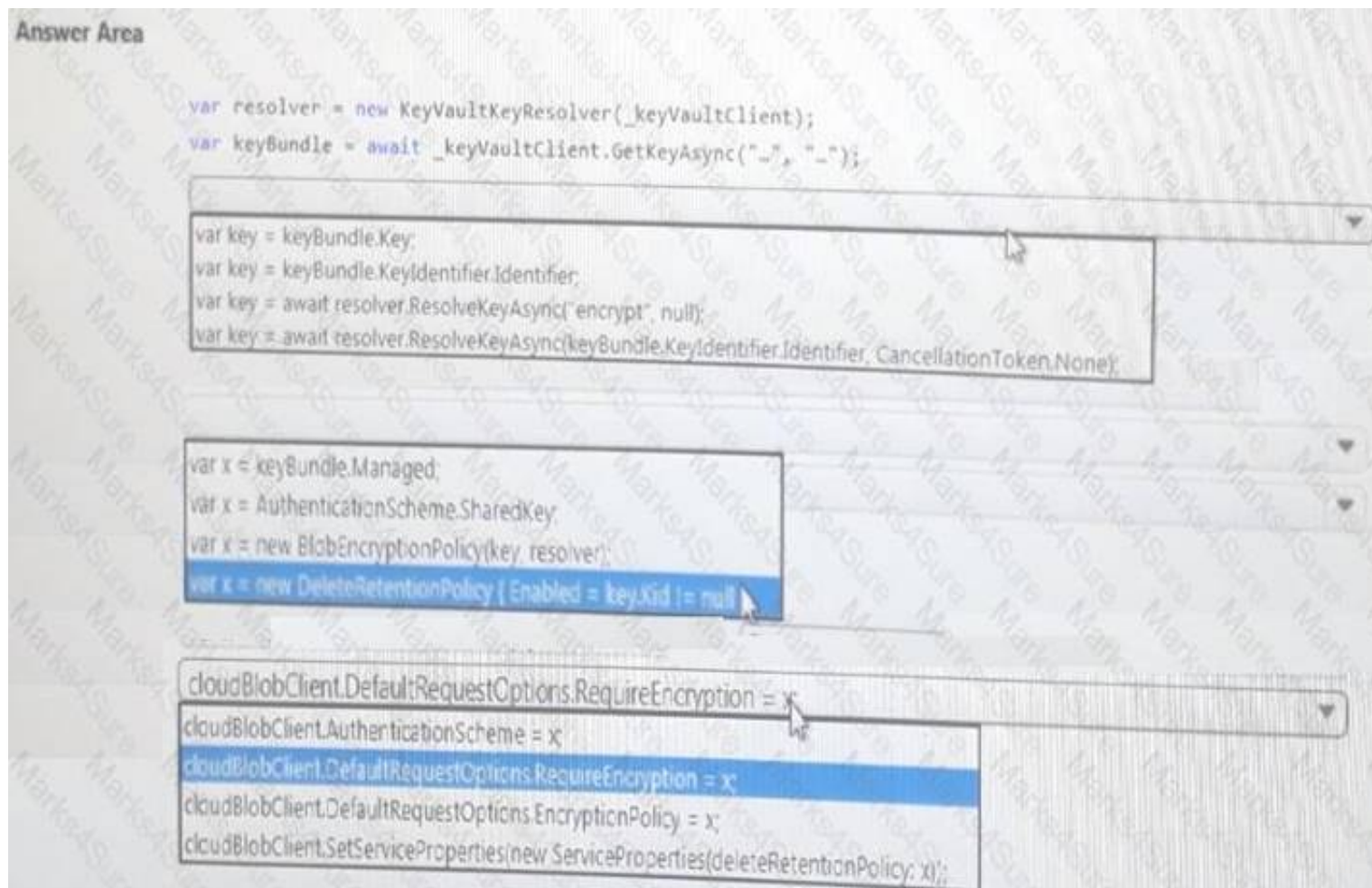
Explanation:

NEW QUESTION 3

- (Exam Topic 1)

You need to ensure that security policies are met. What code should you add at Line PC26?

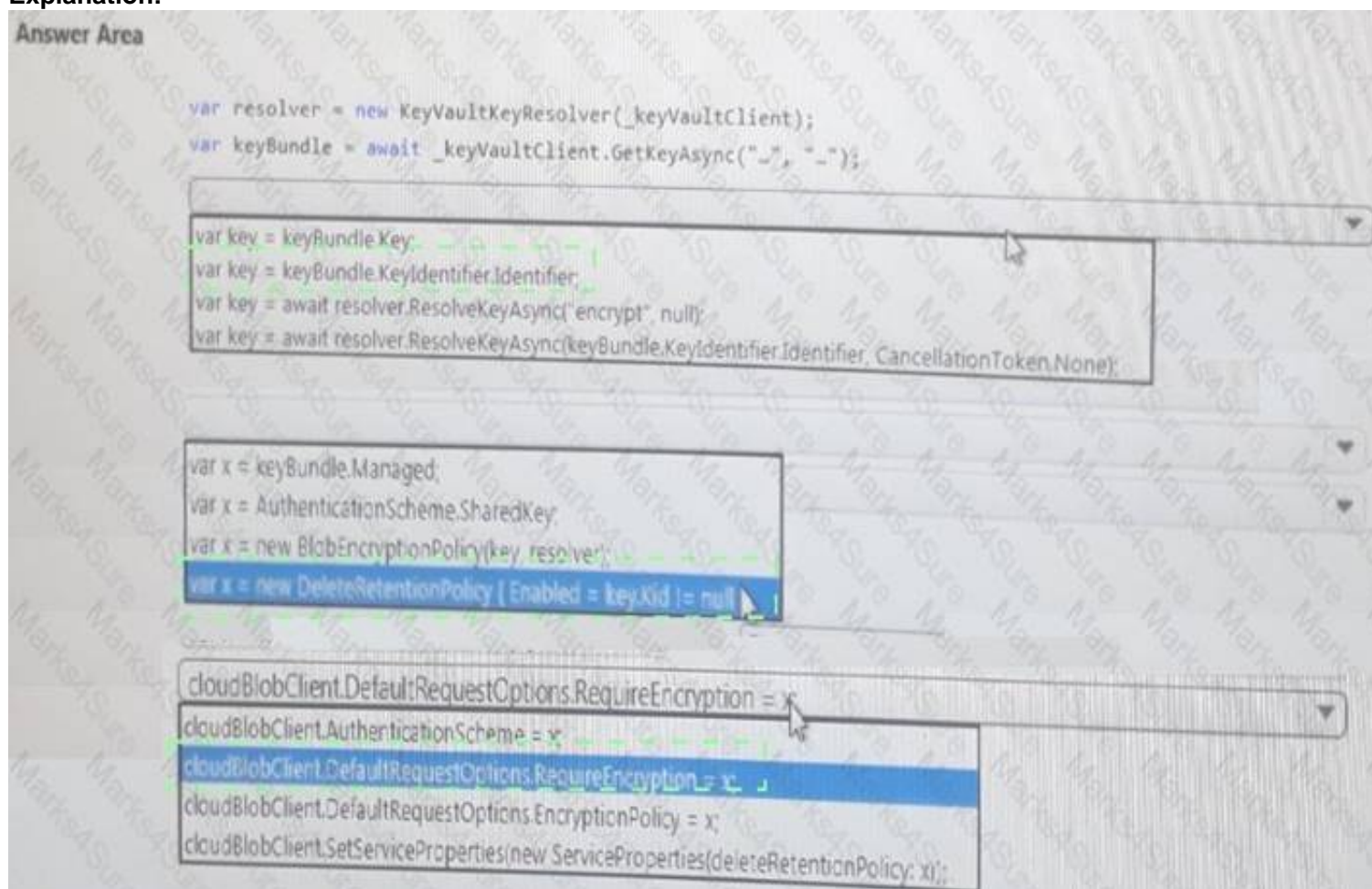
To answer, select the appropriate options in the answer area. NOTE: Each correct selection is worth one point.



- A. Mastered
- B. Not Mastered

Answer: A

Explanation:



NEW QUESTION 4

- (Exam Topic 1)

You need to construct the link to the summary report for the email that is sent to users. What should you do?

- A. Create a SharedAccessBlobPolicy and add it to the containers SharedAccessPolicie
- B. Call GetSharedAccessSignature on the blob and use the resulting link.
- C. Create a SharedAccessBlobPolicy and set the expiry time to two weeks from toda
- D. Call GetSharedAccessSignature on the blob and use the resulting link.
- E. Create a SharedAccessAccountPolicy and call GetsharedAccessSignature on storage account and use the resulting link.
- F. Create a SharedAccessBlobPolicy and set the expiry time to two weeks from toda
- G. Call GetSharedAccessSignature on the container and use the resulting link.

Answer: B

NEW QUESTION 5

- (Exam Topic 1)

Note: This question is part of a series of questions that present the same scenario. Each question in the series contains a unique solution. Determine whether the solution meets the stated goals.

You need to ensure that the SecurityPin security requirements are met.

Solution: Enable Always Encrypted for the SecurityPin column using a certificate contained in Azure Key Vault and grant the WebAppIdentity service principal access to the certificate.

Does the solution meet the goal?

A. Yes

B. No

Answer: A

NEW QUESTION 6

- (Exam Topic 1)

Note: This question is part of a series of questions that present the same scenario. Each question in the series contains a unique solution. Determine whether the solution meets the stated goals.

You need to ensure that the SecurityPin security requirements are met.

Solution: Enable Always Encrypted for the SecurityPin column using a certificate based on a trusted certificate authority. Update the Getting Started document with instruction to ensure that the certificate is installed on user machines.

Does the solution meet the goal?

A. Yes

B. No

Answer: B

NEW QUESTION 7

- (Exam Topic 2)

A company backs up all manufacturing data to Azure Blob Storage. Admins move blobs from hot storage to archive tier storage every month.

You must automatically move blocks to Archive tier after they have not been accessed for 180 days. The path for any item that is not archived must be placed in an existing queue. This operation must be performed automatically once a month. You set the value of TierAgeInDays to 180.

How should you configure the Logic App? To answer, drag the appropriate triggers or action blocks to the correct trigger or action slots. Each trigger or action block may be used once, more than once, or not at all. You may need to drag the split bar between panes or scroll to view content.

NOTE: Each correct selection is worth one point.

Triggers and Action Blocks

Insert Entity

*Table: processing X

*Entity: Path X

Show advanced options ▾

Tier blob

If blob is older than the defined value, tier it to Cool or Archive tier X

*Blob path: Path X

*Blob Tier: Archive ▾

When there are messages in a queue

*Queue Name: processing ▾

Show advanced options ▾

Connected to tableStorageAccountConnection Change connection.

Recurrence

*Interval: 1 *frequency: Month ▾

Show advanced options ▾

Answer Area

{x} Set tier age variable ...

↓

Set tier age variable ...

↓

For each ...

Scan all blobs in this folder

*Select an output from previous steps: value x

When there are messages in a queue

*Queue Name: processing ▾

Show advanced options ▾

Connected to tableStorageAccountConnection Change connection.

✓ If true

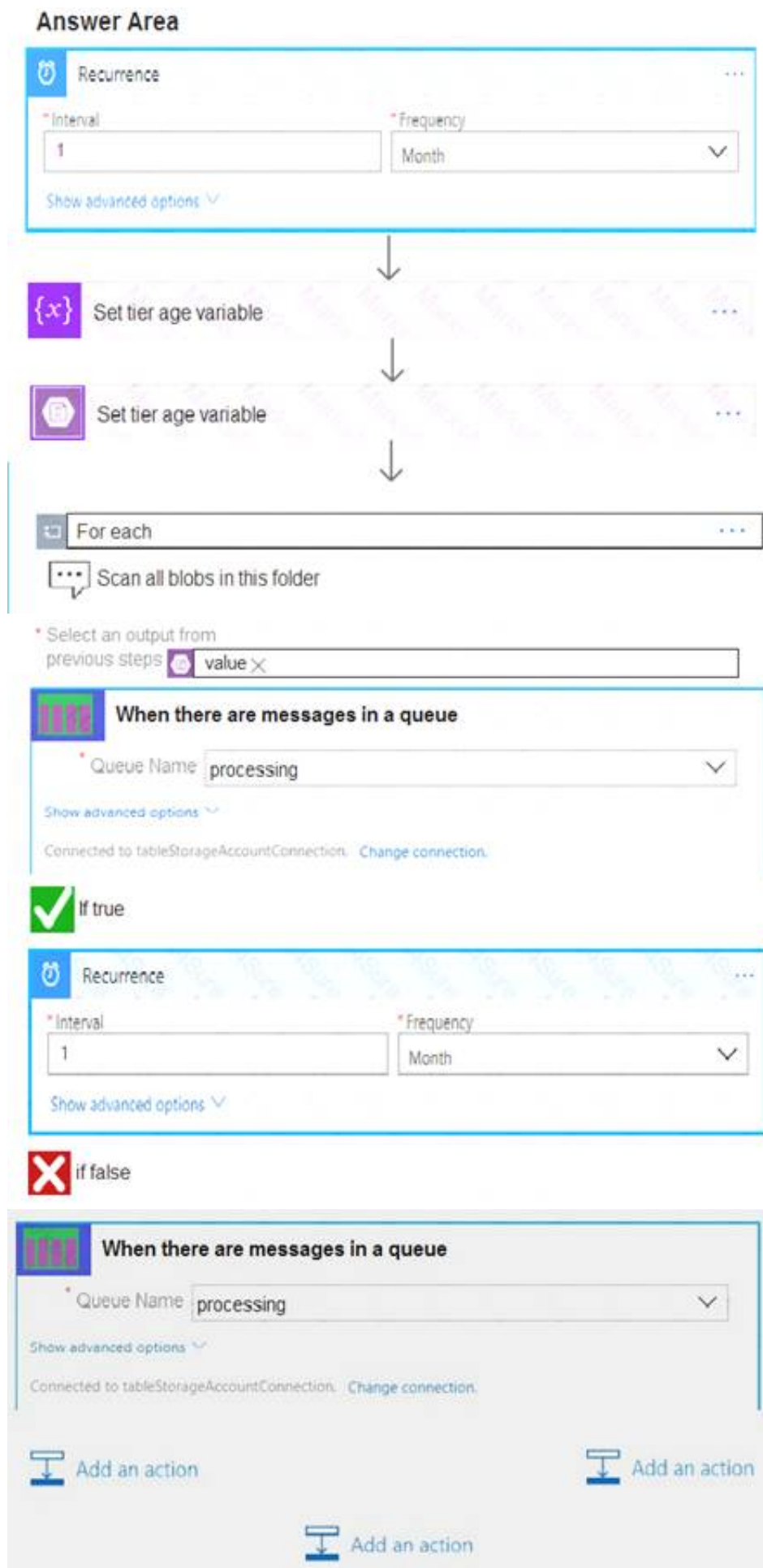
✗ If false

Add an action Add an action Add an action

- A. Mastered
B. Not Mastered

Answer: A

Explanation:



NEW QUESTION 8

- (Exam Topic 2)

A company provides web app hosting services for customers.

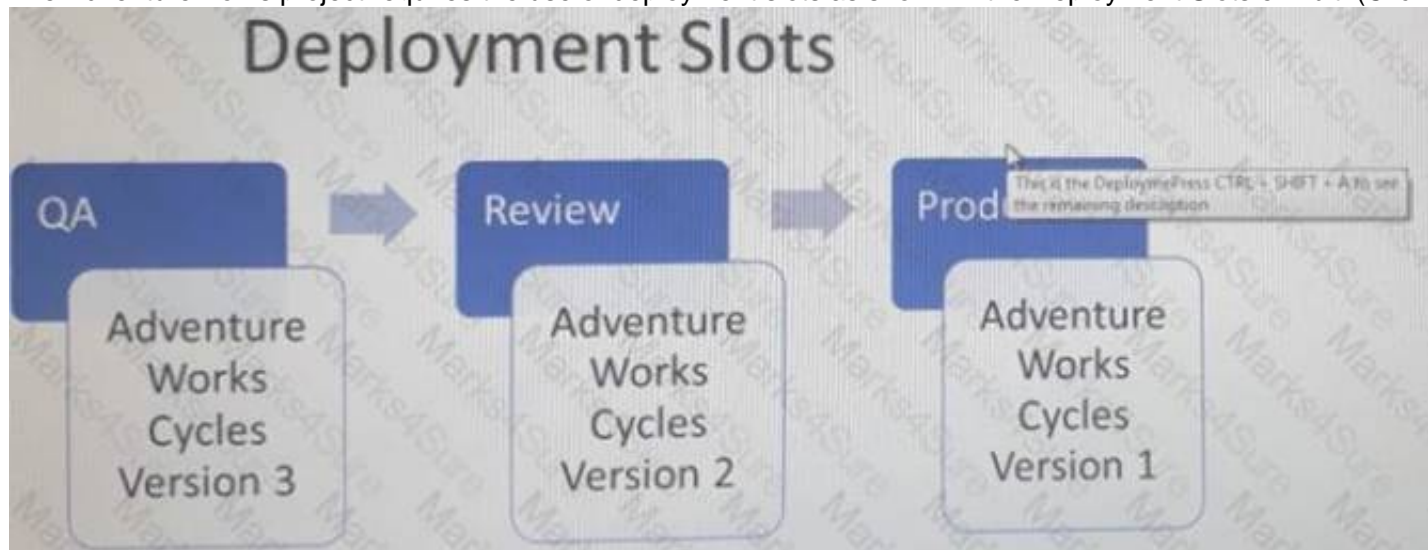
You have a set of App Service Plans available to deploy resources for new projects. The available service tiers are shown in the Service Tiers exhibit. (Click the Service Tiers tab.)



You must provision resources for the projects as shown in the Projects exhibit. (Click the Projects tab.)

Project Table	
Project	URL
Adventure Works Cycles	http://adventureworkscycles.com
Coho Vineyard	http://cohovineyard.com
Trey Research	http://treyresearch.azurewebsites.net

The AdventureWorks project requires the use of deployment slots as shown in the Deployment Slots exhibit. (Click the Deployment Slots tab.)



You need to determine where to deploy resources for each project.

For each of the following statements, select Yes if the statement is true. Otherwise, select No. NOTE: Each correct selection is worth one point.

Answer Area		Yes	No
AdventureWorks Cycles must be hosted on one of the shared plans.		<input type="radio"/>	<input type="radio"/>
Trey Research must be hosted on one of the prototype plans.		<input type="radio"/>	<input type="radio"/>
Coho Vineyard must be hosted on one of the dedicated plans.		<input type="radio"/>	<input type="radio"/>

- A. Mastered
- B. Not Mastered

Answer: A

Explanation:

Answer Area		Yes	No
AdventureWorks Cycles must be hosted on one of the shared plans.		<input checked="" type="radio"/>	<input type="radio"/>
Trey Research must be hosted on one of the prototype plans.		<input checked="" type="radio"/>	<input type="radio"/>
Coho Vineyard must be hosted on one of the dedicated plans.		<input type="radio"/>	<input checked="" type="radio"/>

NEW QUESTION 9

- (Exam Topic 2)

You have a web app named MainApp. You are developing a triggered App Service background task by using the WebJobs SDK. This task automatically invokes a function in the code whenever any new data is received in a queue.

You need to configure the services.

Which service should you use for each scenario? To answer, drag the appropriate services to the correct scenarios. Each service may be used once, more than once, or not at all. You may need to drag the split bar between panes or scroll to view content.

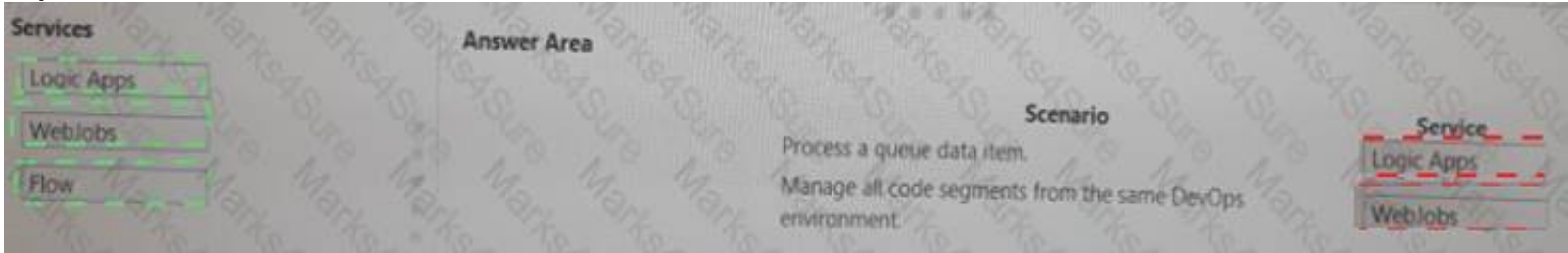
NOTE: Each correct selection is worth one point.



- A. Mastered
- B. Not Mastered

Answer: A

Explanation:



NEW QUESTION 10

- (Exam Topic 2)

A company develops a series of mobile games. All games use a single leaderboard service. You have the following requirements:

- Code should be scalable and allow for growth.
- Each record must consist of a playerId, gameId, score, and time played.
- When users reach a new high score, the system will save the new score using the SaveScore function below
- Each game is assigned an Id based on the series title.

You have the following code. (Line numbers are included for reference only.)

```
08 tableOperation insertOperation = tableOperation.Insert(scoreRecord);
09 table.Execute(insertOperation);
10 }
11 public class PlayerScore : TableEntity
12 {
13     public PlayerScore(string gameId, string playerId, int score, long timePlayed)
14     {
15         this.PartitionKey = gameId;
16         this.RowKey = playerId;
17         Score = score;
18         TimePlayed = timePlayed;
19     }
20     public int Score { get; set; }
21     public long TimePlayed { get; set; }
22 }
```

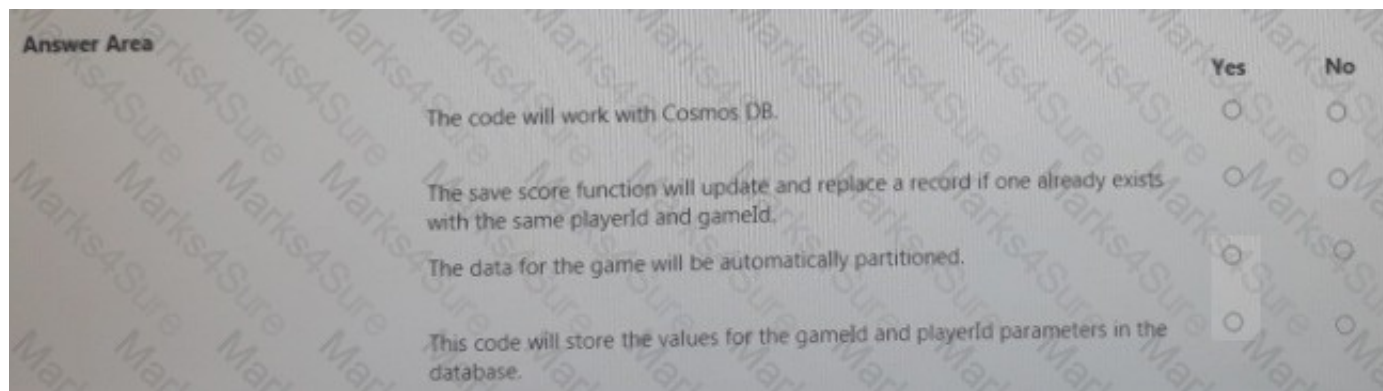
You store customer information in an Azure Cosmos database. The following data already exists in the database:

PartitionKey	RowKey	Email
Harp	Walter	wharp@contoso.com
Smith	Steve	ssmith@contoso.com
Smith	Jeff	jsmith@contoso.com

You develop the following code. (Line numbers are included for reference only.)

```
01 CloudTableClient tableClient = account.CreateCloudTableClient();
02 CloudTable table = tableClient.GetTableReference("people");
03 TableQuery<CustomerEntity> query = new TableQuery<CustomerEntity>()
04     .Where(TableQuery.CombineFilters(
05         TableQuery.GenerateFilterCondition(PartitionKey, QueryComparisons.Equal, "Smith"),
06         TableOperators.And, TableQuery.GenerateFilterCondition(Email, QueryComparisons.Equal, "ssmith@contoso.com")
07     ));
08 await table.ExecuteQuerySegmentedAsync<CustomerEntity>(query, null);
```

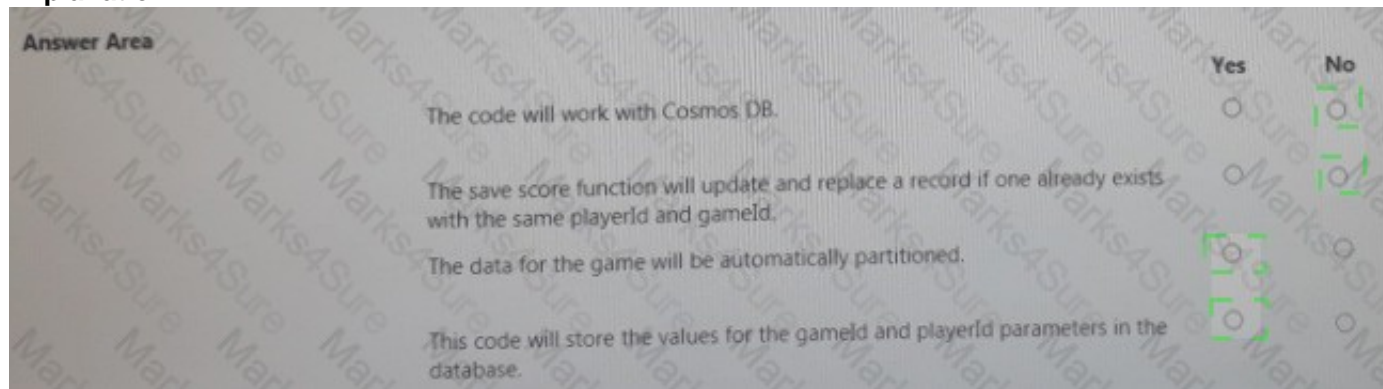
For each of the following statements, select Yes if the statement is true. Otherwise, select No. NOTE: Each correct selection is worth one point.



- A. Mastered
- B. Not Mastered

Answer: A

Explanation:



NEW QUESTION 10

- (Exam Topic 2)

You use Azure Table storage to store customer information for an application. The data contains customer details and is partitioned by last name. You need to create a query that returns all customers with the last name Smith. Which code segment should you use?

- A. `TableQuery.GeneratePilterCondition("LastName", QueryComparisons.Equal, "Smith")`
- B. `TableQuery.GeneratefilterCondition("PartitionKey", QueryComparison`
- C. `Equal, "Smith")`
- D. `TableQue.GenerateFilterCondition("PartitionKey", Equals, "Smith")`
- E. `TableQuer`
- F. `GenerateFilterCondition("LastName", Equals, "Smith")`

Answer: D

NEW QUESTION 13

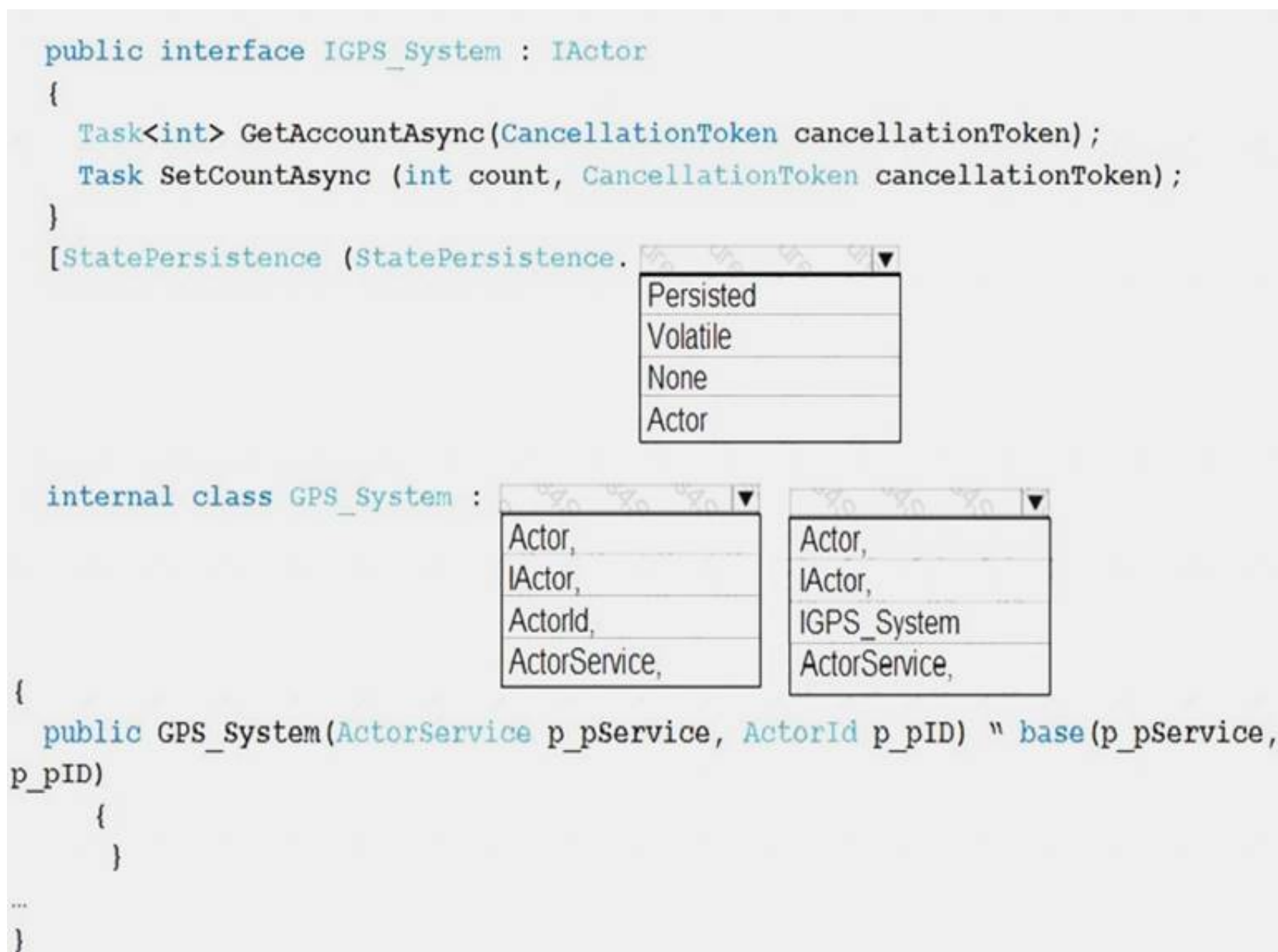
- (Exam Topic 2)

You develop a microservice solution for a company.

The solution uses the Actor design pattern for all services including mappings, GPS, and communication. The mapping and communication systems must persist state on disk. The GPS system must persist state in-memory. All Actors must have a service replica count of three.

You need to implement code for the GPS system.

How should you complete the code segment? To answer, select the appropriate options in the answer area. NOTE: Each correct selection is worth one point.



- A. Mastered
- B. Not Mastered

Answer: A

Explanation:

Example:

The state manager retrieval methods return a reference to an object in local memory. Modifying this object in local memory alone does not cause it to be saved durably. When an object is retrieved from the state manager and modified, it must be reinserted into the state manager to be saved durably.

[StatePersistence(StatePersistence.Persisted)] class MyActor : Actor, IMyActor

```

{
public MyActor(ActorService actorService, ActorId actorId) base(actorService, actorId)
{
}
public Task SetCountAsync(int value)
{
return this.StateManager.SetStateAsync<int>("MyState", value);
}
}

```

References:

<https://docs.microsoft.com/en-us/azure/service-fabric/service-fabric-reliable-actors-access-save-remove-state>

NEW QUESTION 17

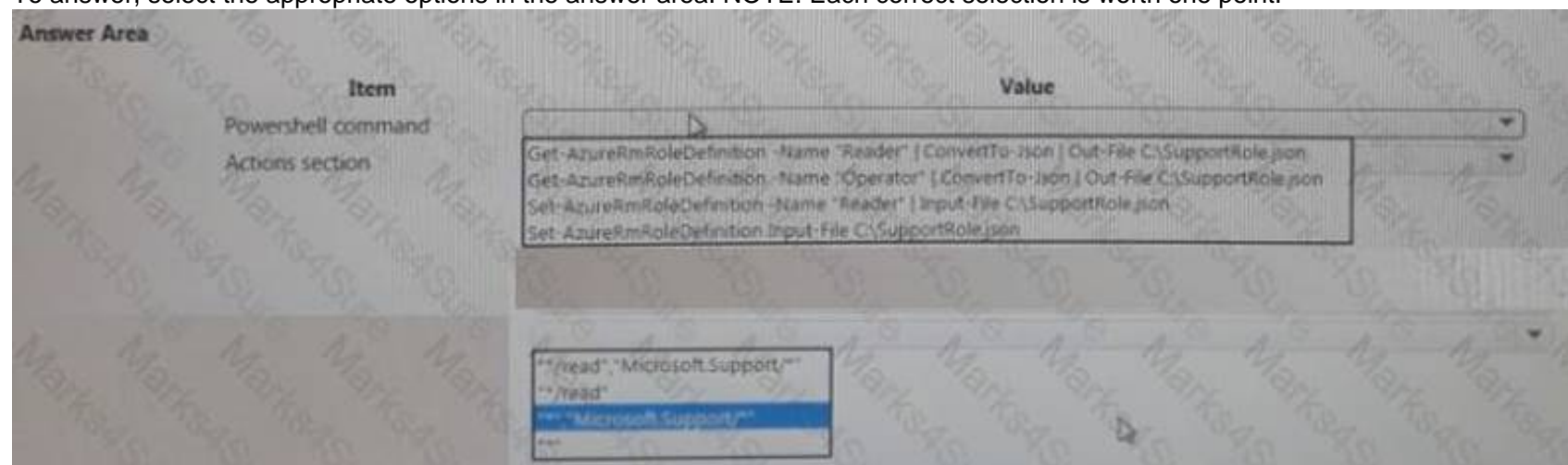
- (Exam Topic 2)

Your company is migrating applications to Azure. The U department must allow internal developers to communicate with Microsoft support.

The service agents of the IT department must only have view resources and create support ticket permissions to all subscriptions. A new custom role must be created by reusing a default role definition and changing the permissions.

You need to create the custom role.

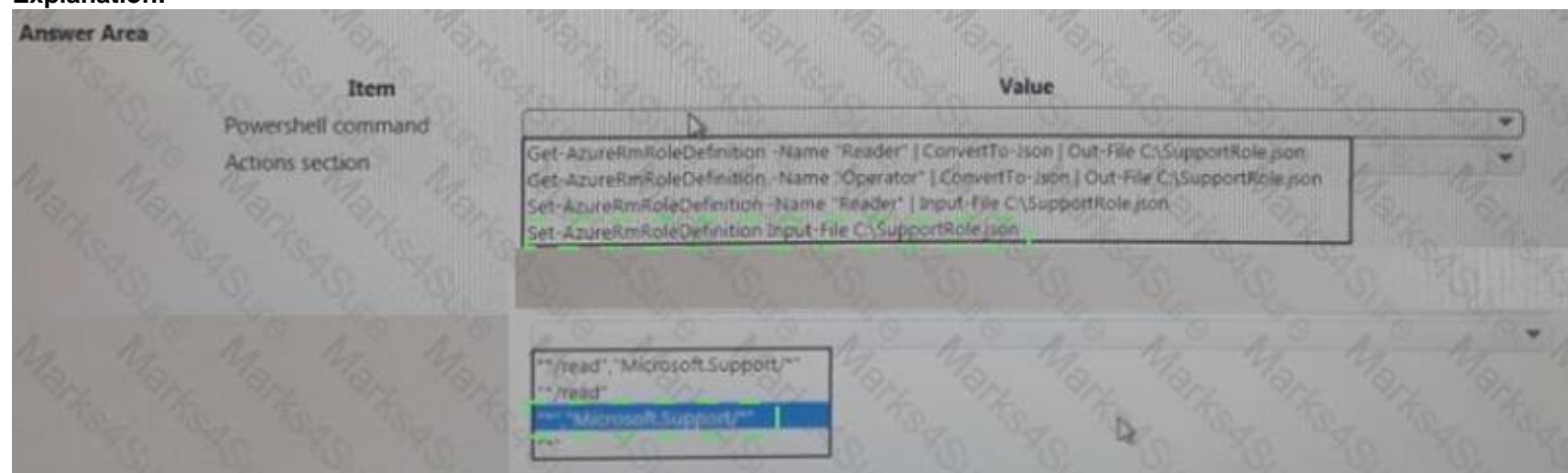
To answer, select the appropriate options in the answer area. NOTE: Each correct selection is worth one point.



- A. Mastered
B. Not Mastered

Answer: A

Explanation:



NEW QUESTION 20

- (Exam Topic 2)

Note: This question is part of a series of questions that present the same scenario solution meets the stated goals.

You have the following resource groups:

Resource group	Comments
DevServer_WestCentralUS	<p>This resource group is located in the West Central US region and contains a single virtual machine named DevServer.</p> <p>DevServer is connected to a private subnet in an Azure Virtual Network that has no internet access.</p>
Workstation_EastUs	<p>This resource group is located in the East US region and contains a virtual machine named DevWorkstation.</p> <p>DevWorkstation is connected to a subnet in a Virtual Network and is configured with a public IP address. A network security group has been configured to allow public incoming remote desktop protocol (RDP) connections to the DevWorkstation.</p>

Developers must connect to DevServer only through DevWorkstation. To maintain security, DevServer must not accept connections from the internet
You need to create a private connection between the DevWorkstation and DevServer.

Solution: Configure a public IP address on DevServer_WestCentral. Configure the Network Security Group to allow all incoming ports.

Does the solution meet the goal?

- A. Yes
B. No

Answer: B

NEW QUESTION 21

- (Exam Topic 2)

You have an app that stores player scores for an online game. The app stores data in Azure tables using a class named PlayerScore as the table entity. The table is populated with 100,000 records.

You are reviewing the following section of code that is intended to retrieve 20 records where the player score exceeds 15,000. (Line numbers are included for reference only.


```

1 public void GetScore(string playerId, int score, string gameName)
2 {
3     TableQuery<DynamicTableEntity> query = new TableQuery<DynamicTableEntity>().Select(new string[] { "Score" })
4     .Where(TableQuery.GenerateFilterConditionForInt("Score", QueryComparisons.GreaterThanOrEqual, 15000)).Take(20);
5     EntityResolver<KeyValuePair<string, int>> resolver =
6     (partitionKey, rowKey, ts, props, etag) => new KeyValuePair<string, int>(rowKey, props["Score"].Int32Value);
7     foreach (var scoreItem in scoreTable.ExecuteQuery(query, resolver, null, null))
8     {
9         Console.WriteLine($"{scoreItem.Key} {scoreItem.Value}");
10    }
11 }
12
13 public class PlayerScore : TableEntity
14 {
15     public PlayerScore(string gameId, string playerId, int score, long timePlayed)
16     {
17         PartitionKey = gameId;
18         RowKey = playerId;
19         Score = score;
20         TimePlayed = timePlayed;
21     }
22     public int Score { get; set; }
23     public long TimePlayed { get; set; }
24 }

```

For each of the following statements, select Yes if the statement is true. Otherwise, select No. NOTE: Each correct selection is worth one point

Answer Area	Yes	No
The code queries the Azure table and retrieves the TimePlayed property from the table.	<input type="radio"/>	<input type="radio"/>
The code will display a maximum of twenty records.	<input type="radio"/>	<input type="radio"/>
All records will be sent to the client. The client will display records for scores greater than or equal to 15,000.	<input type="radio"/>	<input type="radio"/>
The scoreItem.Key property of the KeyValuePair that ExecuteQuery returns will contain a value for PlayerID.	<input type="radio"/>	<input type="radio"/>

- A. Mastered
- B. Not Mastered

Answer: A

Explanation:

Answer Area	Yes	No
The code queries the Azure table and retrieves the TimePlayed property from the table.	<input checked="" type="radio"/>	<input type="radio"/>
The code will display a maximum of twenty records.	<input checked="" type="radio"/>	<input type="radio"/>
All records will be sent to the client. The client will display records for scores greater than or equal to 15,000.	<input type="radio"/>	<input checked="" type="radio"/>
The scoreItem.Key property of the KeyValuePair that ExecuteQuery returns will contain a value for PlayerID.	<input type="radio"/>	<input checked="" type="radio"/>

NEW QUESTION 22

- (Exam Topic 3)

You need to troubleshoot the order workflow.

What should you do? Each correct answer presents part of the solution. NOTE: Each correct selection is worth one point.

- A. Review the run history.
- B. Review the trigger history.
- C. Review the API connections.
- D. Review the activity log.

Answer: BD

Explanation:

Scenario: The order workflow fails to run upon initial deployment to Azure.

Deployment errors arise from conditions that occur during the deployment process. They appear in the activity log.

References:

<https://docs.microsoft.com/en-us/azure/azure-resource-manager/resource-group-audit>

NEW QUESTION 24

- (Exam Topic 3)

You need to provision and deploy the order workflow.

Which three components should you include? Each correct answer presents part of the solution. NOTE: Each correct selection is worth one point

- A. Workflow definition
- B. Connections
- C. Resources

D. Functions
E. On-premises Data Gateway

Answer: CDE

NEW QUESTION 25

.....

THANKS FOR TRYING THE DEMO OF OUR PRODUCT

Visit Our Site to Purchase the Full Set of Actual AZ-200 Exam Questions With Answers.

We Also Provide Practice Exam Software That Simulates Real Exam Environment And Has Many Self-Assessment Features. Order the AZ-200 Product From:

<https://www.2passeasy.com/dumps/AZ-200/>

Money Back Guarantee

AZ-200 Practice Exam Features:

- * AZ-200 Questions and Answers Updated Frequently
- * AZ-200 Practice Questions Verified by Expert Senior Certified Staff
- * AZ-200 Most Realistic Questions that Guarantee you a Pass on Your FirstTry
- * AZ-200 Practice Test Questions in Multiple Choice Formats and Updatesfor 1 Year